



 **MITSUBISHI ELECTRIC**

HVAC Advanced Products Division



**Mr. SLIM®** | [mrslim.com](http://mrslim.com)

*America's best-selling ductless products.*

# Mr. Slim® Systems: Redefining Comfort



Mr. Slim M-Series Indoor Unit

Comfort is a concept many of us notice only when we're either uncomfortable or extremely relaxed. At Mitsubishi Electric comfort is all we think about, and our Mr. Slim split-ductless cooling and heating systems reflect that thinking. At home or at work, our Mr. Slim systems are designed to make any space inviting. Maybe your home has a room that's always too hot or too cold. Or perhaps you're looking for a way to effectively control the climate in different rooms. No matter what your cooling and heating needs may be, Mr. Slim is the perfect way to make any room in your home or workplace as comfortable as possible.

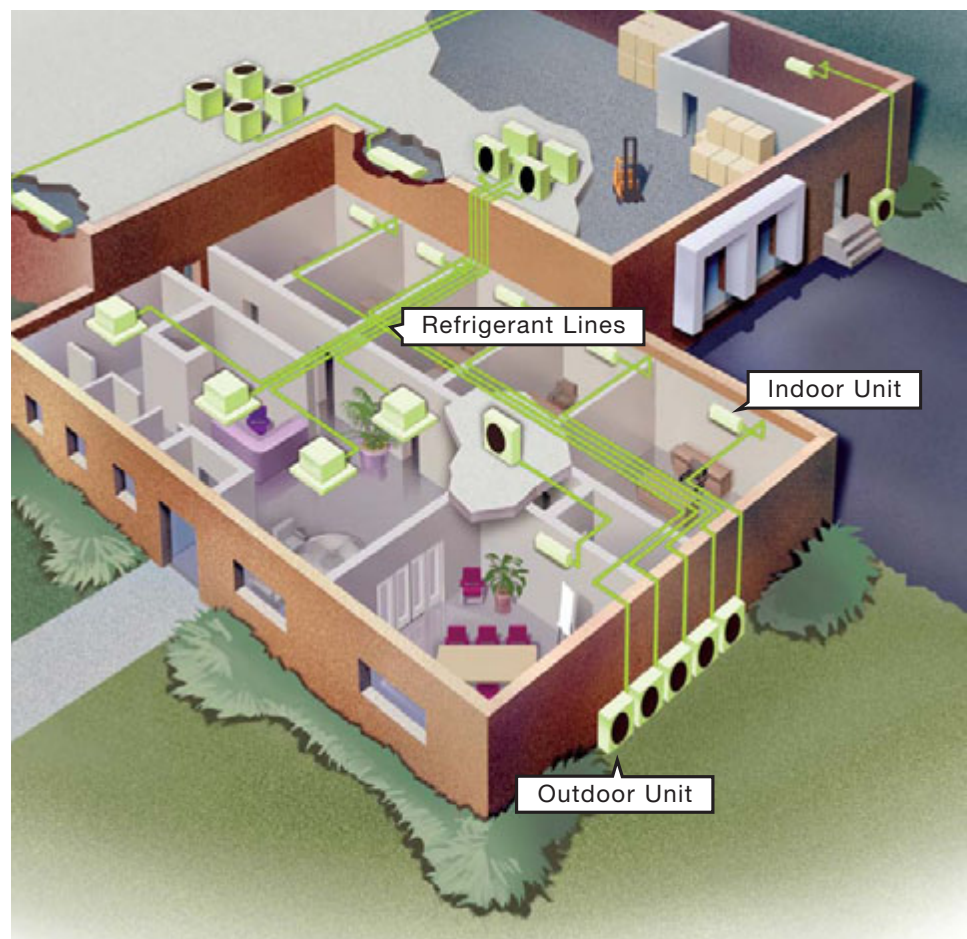
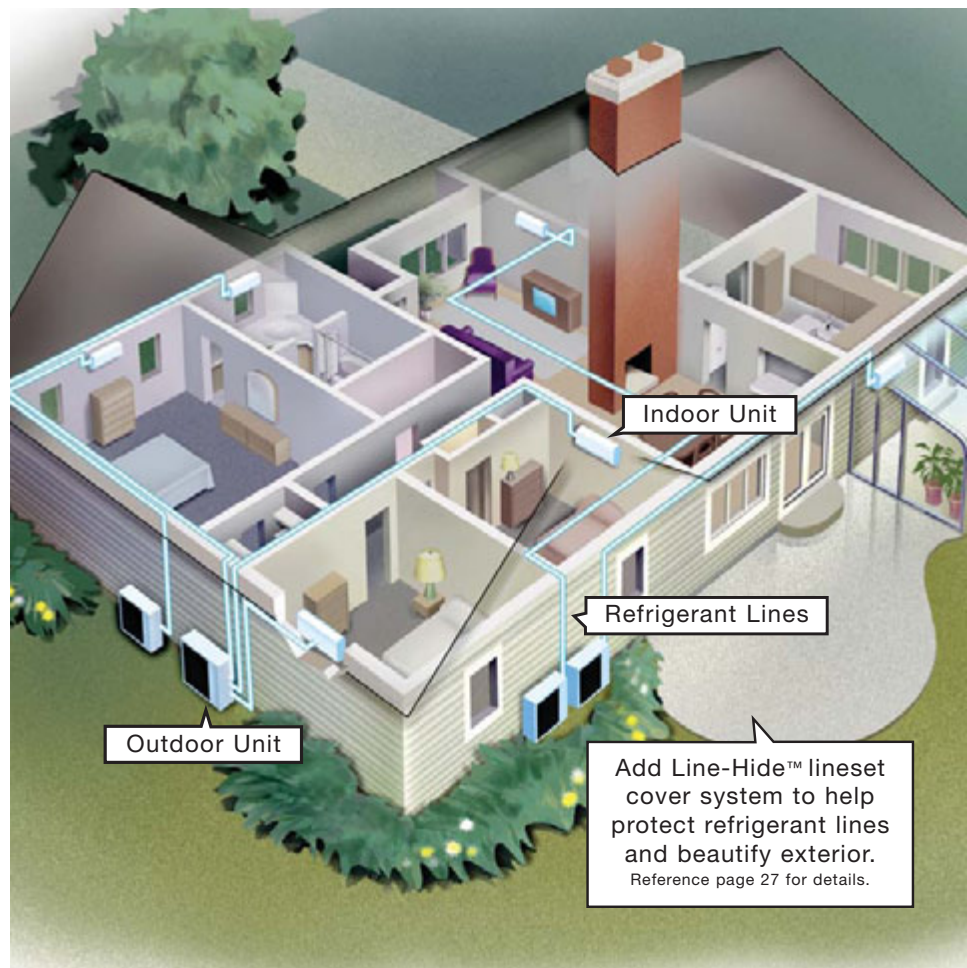


## What is Mr. Slim® Ductless Technology?

For decades split-ductless air-conditioning systems have been the quiet solution for cooling and heating problems around the world. Our quiet and powerful Mr. Slim systems have three main components: an indoor unit, outdoor unit, and remote controller. These units are easily connected by refrigerant lines running through a small three-inch opening in the wall or ceiling. The outdoor unit cycles the refrigerant through the lines to and from the indoor unit, where the air is conditioned and distributed into the space. Installation is as simple as mounting the indoor and outdoor units, connecting the refrigerant lines, and making a few electrical connections. An easy installation for your contractor means you'll be enjoying the comfort Mr. Slim provides faster.

## Why Mr. Slim?

Mitsubishi Electric is the industry leader in ductless air-conditioning technology. Our innovations have defined cutting-edge technology for years. Compare, and you'll see no one surpasses Mr. Slim's performance for quiet, easy-to-use, and energy efficient operation. And since our ductless technology carries the Mitsubishi Electric name, you know every unit is built to last. The bottom line is that Mr. Slim delivers the ultimate control of comfort for your home or office. It's true today and will be comfortably evident for years to come.





CAN'T WE  
JUST STICK A  
WINDOW UNIT  
IN THERE?

*Sure you can use a window unit.*



But it will block the view from any angle. It's also an open invitation for burglars to pay you a visit. Oh, and don't forget that old window units are also ugly, drippy, noisy and add no significant value to your home whatsoever. On the other hand, Mr. Slim units from Mitsubishi Electric are easy for your contractor to install. They work quietly and don't leave a large, easily-accessed opening in your otherwise secure home. And split-ductless systems like Mr. Slim also add value to your home. All-in-all, window units may be the easy solution, but Mr. Slim systems from Mitsubishi Electric are the smart solution. You get what you pay for when it comes to innovative and reliable air conditioning.

## Where Can Mr. Slim® Be Used?

Mitsubishi Electric Mr. Slim systems are the perfect solution for almost any spot cooling or heating situation. For example, our ductless systems can make an uncomfortably hot or cold room in an existing building comfortable again. Perhaps you are remodeling or renovating an **older home** or **business** built before ducted air conditioning was available. Because there is no ductwork to run, Mr. Slim ductless systems are both **plaster-wall** and **brick-facade friendly**, so there's no need to compromise the integrity of your home or office just to make each room comfortable. In addition, Mr. Slim systems are perfect for **schools, universities, nursing homes, hospitals, restaurants, hotels, equipment rooms, office buildings, and churches**. The versatility and variety of applications for Mr. Slim are virtually unlimited. If a room is too hot or cold, Mr. Slim can handle it! **To find more information about our Mr. Slim ductless product line or to find a Diamond Dealer near you, please visit our website at [mrslim.com](http://mrslim.com).**

FEATURES	BENEFITS
EFFICIENT, QUIET OPERATION	Mr. Slim is designed to be quieter and more efficient than old window units, so you'll sleep easier with less worry about operating costs.
NO DUCTWORK	Mr. Slim installs without ductwork, only a three-inch opening in the wall or ceiling. This design allows you to retain the original aesthetics of your home.
EASY TO INSTALL	Because no ductwork is involved, the installation is quick and simple, which means little, or no, disruption to your home or business.
VERSATILE	From living rooms to board rooms, from classrooms to kitchens to cafeterias, there's a Mr. Slim system to fit any cooling or heating need.
WIRELESS REMOTE CONTROLLER	Mr. Slim M-Series systems come with a convenient wireless remote controller that puts you in control of your own comfort.

## INDEX

### **M-SERIES:** 9,000-30,000 Btu/h

*Residential and Select Commercial Air Conditioners and Heat Pumps*  
Pages 06-07

*Wireless Remote*  
Page 07

### **MS/MSH WALL-MOUNTED SERIES:**

*9,000-24,000 Btu/h*  
*Air Conditioners and Heat Pumps*  
Pages 08-09

### **MSZ INVERTER WALL-MOUNTED SERIES:**

*9,000-12,000 Btu/h*  
*Inverter Driven Heat Pump System*  
Pages 08-09

### **MSM MULTI WALL-MOUNTED SERIES:**

*18,000 Btu/h*  
*Air Conditioners*  
Pages 10-11

### **MXZ INVERTER MULTI ZONE WALL-MOUNTED SERIES:**

*30,000 Btu/h*  
*Inverter Driven Multi-zone Heat Pump System*  
Pages 12-15

### **P-SERIES:** 12,000-42,000 Btu/h

*Select Residential or Varied Commercial*  
Pages 16-17

*Wired Remote Features and Outdoor Unit Comparison*  
Page 17

### **PK/PKH WALL-MOUNTED SERIES:**

*12,000-36,000 Btu/h*  
*Air Conditioners and Heat Pumps with Wired and Wireless Hand-Held Remote Controllers*  
Pages 18-20

### **PC/PCH CEILING-SUSPENDED SERIES:**

*24,000-42,000 Btu/h*  
*Air Conditioners and Heat Pumps*  
Pages 21-23

### **PL/PLH CEILING-RECESSED SERIES:**

*12,000-42,000 Btu/h*  
*Air Conditioners and Heat Pumps*  
Pages 24-26

**GENERAL SPECIFICATIONS:** Page 27

**REFRIGERANT TUBING AND ACCESSORIES:** Page 27

**GLOSSARY:** Below

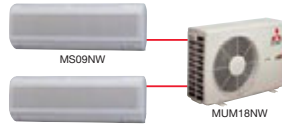
## MR. SLIM PRODUCT FAMILY



MS/MSH-T/MSZ



MS/MSH-E



MSM Multi

M-SERIES



MXZ Multi

INVERTER



PK/PKH



PC/PCH



PL/PLH

P-SERIES

## GLOSSARY

**AIR CONDITIONER:** A mechanical device used to control temperature, humidity, cleanliness, and movement of air in a confined space.

**Btu/h:** British Thermal Units per Hour. A term that is used to measure cooling or heating capacity.

**CAPACITY or LOAD:** A refrigerating rating system usually measured in Btu/h.

**COMPRESSOR:** A pump found in a refrigerating or air-conditioning system which pumps refrigerant through pipes between an outdoor and an indoor unit using pressure.

**HEAT PUMP:** An air-conditioning system that is capable of reversing the direction of refrigerant flow to provide either cooling or heating to the indoor space.

**HSPF:** Heating Season Performance Factor. A rating of the seasonal efficiency of a heat pump unit when operating in the heating mode.

**HVAC:** A term which stands for Heating, Ventilation, and Air Conditioning.

**INDOOR UNIT:** The air-handler of an air-conditioning system, which contains a heat exchange coil, filters, and fan. Provides conditioned air into the space.

**INVERTER TECHNOLOGY:** Mitsubishi Electric's MSZ and MXZ outdoor units use inverter compressor technology (Variable Frequency Drive) to provide exceptional indoor, high-speed cooling and heating. By responding to indoor temperature changes, these systems reduce power consumption by varying the compressor speed for extra energy savings. The system operates only at the levels needed to maintain a constant and comfortable indoor environment. Our CITY MULTI product line also employs inverter technology.

**MICROPROCESSOR:** An electrical component consisting of integrated circuits which may accept, store, control, and output information.

**OUTDOOR UNIT:** A component of an air-conditioning system which contains compressor, propeller fan, circuit board, and heat exchange coil. Pumps refrigerant to/from indoor unit.

**REFRIGERANT LINES:** Copper tubing through which refrigerant flows to and from the indoor and outdoor units.

**SEER:** Seasonal Energy Efficiency Ratio. A rating of the seasonal efficiency of an air-conditioning unit in cooling mode.

**SPLIT-DUCTLESS SYSTEM:** A system comprised of a remote outdoor condensing unit connected by refrigerant pipes to a matching, non-ducted indoor air-handler. Special cases for introducing fresh air may call for limited ducting to air-handler from outside.

# M-SERIES

RESIDENTIAL AND SELECT COMMERCIAL

## Small Size, Big Performance

While all of our Mr. Slim® units are compact and lightweight, the M-Series is designed specifically for tight spaces. But don't be fooled. The powerful M-Series delivers plenty of cool or warm air to almost any size room. And unlike window units, Mr. Slim's small size, color, and mounting position means it blends in well.

## No Ductwork Required

Mr. Slim systems need no ductwork. There's only a small, three-inch opening connecting the indoor and outdoor units. This means easy installation, less mess, and a better looking home.

## Efficient. Quiet. Secure. Pick All Three.

That's right. Mr. Slim units deliver all of these. First, its small design, smart functionality, and lack of ductwork plus inverter technology (MSZ, MXZ) make it energy-efficient. Second, the unit's fan is

designed to deliver air quietly and continuously with only a gentle whoosh. (That's why Mr. Slim was the first choice for thousands of churches, schools, and libraries across the U.S. *Shhh!*) And because each system installs with only a three-inch opening for connecting the indoor and outdoor units, you don't have to worry about thieves seeing an inviting window unit which is easy to remove. With Mr. Slim systems you can sleep in quiet comfort and with a sense of security.



Lifestyle photo courtesy of Mitsubishi Digital Electronics America, Inc. Plasma TV Model PP-5010 shown. Visit [mitsubishitv.com](http://mitsubishitv.com) for details.

## Choose the Mr. Slim® That's Right for You

Room Size	Performance
100 - 350 Sq. Ft.	<9,000 BTU/H
350 - 465 Sq. Ft.	9,000 - 14,000 BTU/H
465 - 525 Sq. Ft.	14,000 - 16,000 BTU/H
525 - 600 Sq. Ft.	16,000 - 18,000 BTU/H
600 - 1,050 Sq. Ft.	18,000 - 30,000 BTU/H

*This table is for general guidance only. Additional conditions may factor into your actual cooling or heating needs. Please contact your contractor or Mitsubishi Electric for a more accurate determination of your specific cooling or heating needs.*

### M-SERIES LINE-UP



MS/MSH-T/MSZ  
Wall-mounted  
Air Conditioners and  
Heat Pumps  
*[pg.08]*



MSH-E  
Wall-mounted  
Heat Pump With  
Auxiliary Electric Heat  
*[pg.08]*

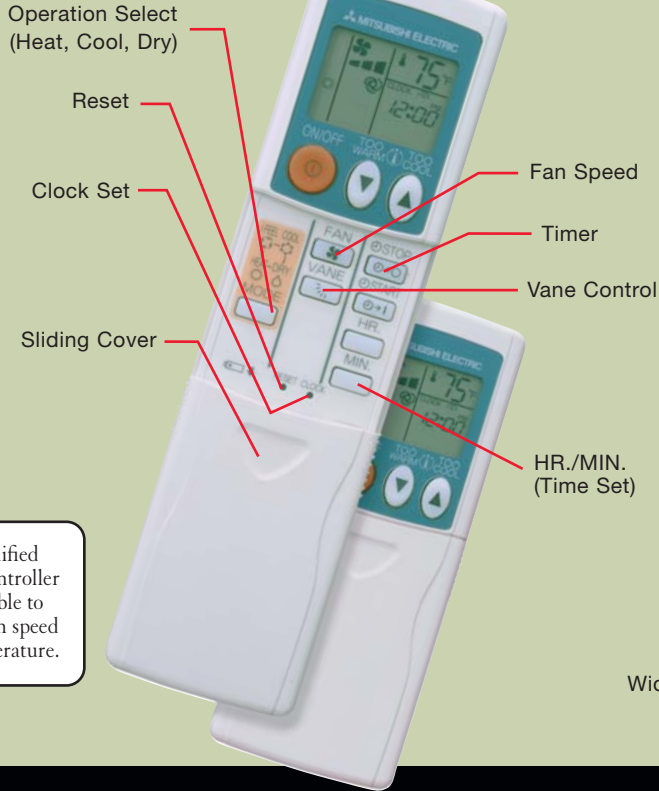


MSM  
Multi  
Wall-mounted  
Air Conditioners  
*[pg.10]*



**INVERTER** MXZ  
Inverter Multi  
Wall-mounted  
Heat Pumps  
*[pg.12]*

## Wireless Remote Controller



A simplified remote controller is available to control fan speed and temperature.



Wireless Remote Controller Detail MSH24WN

Wide Vane

Long Air Throw

## FEATURES

## BENEFITS

<b>QUIET OPERATION</b>	Less operating sound than a window unit means you'll sleep easier with Mr. Slim®.
<b>NO DUCTWORK</b>	No need for major construction and remodeling hassles. Mr. Slim is installed quickly and easily.
<b>ZONE CONTROL</b>	Able to cool and heat only those spaces you want, for maximum control and energy efficiency.
<b>ADVANCED MICROPROCESSOR CONTROLS</b>	Advanced self-monitoring controls keep you comfortable no matter what the conditions are outside.
<b>CONVENIENT WIRELESS REMOTE CONTROLLER</b>	Offers comfort control in the palm of your hand. Press a button, and superior air conditioning is yours.
<b>WASHABLE LONG-LIFE FILTERS</b>	Saves you money by cleaning filters instead of replacing them.



# MS/MSH

WALL-MOUNTED SERIES

Air Conditioners  
and Heat Pumps



MS/MSH-T Indoor Unit

**9,000 to 24,000**  
**Btu/h Capacity**

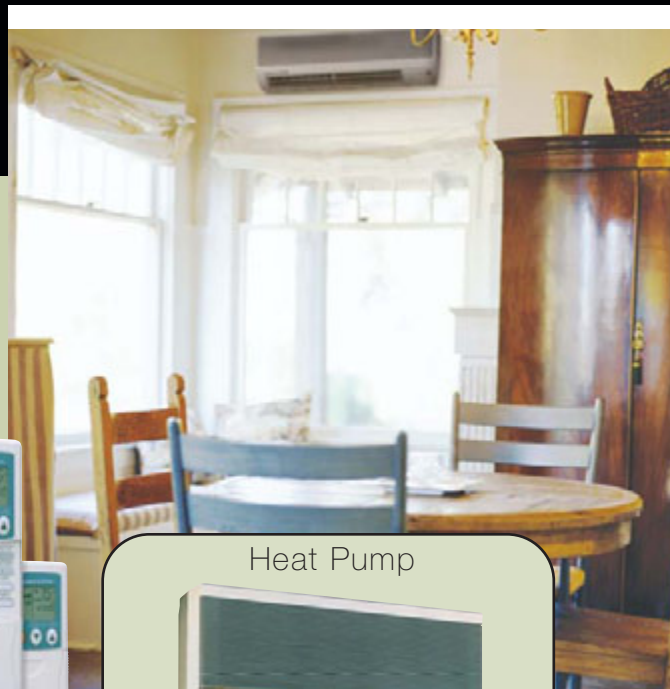
MS/MSH-T/MSZ  
Wireless Remote  
Controller



What is comfort? Comfort is a home that's cool and dry in the summer and cozy and warm in the winter. This is what you get with the Mr. Slim® system, perfect year-round comfort. The MS/MSH system installs easily. Mounted high on the wall, the indoor unit blends into most room environments without taking up any window space. Our MS/MSH systems are the perfect way to cool or heat any room in your home. The MSZ inverter series provides high speed and efficient cooling and heating performance to keep your home cozy year-round.

## No Ductwork Required

Mr. Slim systems need no ductwork; so if you are adding on a room you don't have to tie into an existing system to steal cold or warm air from other areas in the home. This advanced technology means better room control and increased comfort for your home or office, plus greater efficiency.



Heat Pump



MSH-E Indoor Unit

**15,000**  
**Btu/h Capacity**

MSH-E  
Wireless Remote  
Controller



## System Control in the Palm of Your Hand

Mr. Slim's M-Series systems offer three remote controllers: two comprehensive remotes for complete control and a simplified one when only simple control of temperature and fan speed are needed. Each provides three modes: COOL, HEAT and DRY. They control fan speed and temperature setting and have 12-hour on/off timers, giving you one-button control over your personal comfort.

Our new MS/MSH24WN models add two additional features to the controller. First, is a WIDE VANE button, which distributes airflow to a wider angle (150 deg.) evenly from right to left,

# MSZ

INVERTER DRIVEN WALL-MOUNTED SERIES

INVERTER

Heat Pumps



MSZ Indoor Unit



MUZ Outdoor Unit

**9,000 to 12,000**  
**Btu/h Capacity**



to ensure that a much more comfortable temperature is maintained across a wider area. Second, is a button marked LONG, which boosts airflow reach to up to 36 feet. Together these two new features offer seven different airflow patterns, so the conditioned air always reaches to where you need it.

## Warm Air Without Drafts

Our Hot-start technology provides warmth from the beginning. The fan increases in speed as the coil is warmed, which reduces drafts, so when you want warm air, you'll get it.





SPECIFICATIONS

MS/MSH/MSZ WALL-MOUNTED AIR CONDITIONERS AND HEAT PUMPS



SYSTEM		MS09TW	MS12TN	MS15TN	MS17TN	MS24WN	MSH09TW	MSH12TN	MSH15TN	MSH17TN	MSH24WN	MSZ09UN	MSZ12UN	MSH15EN	
Capacity	Cooling *Btu/h *1	8,500	12,600	14,600	16,100	22,000	8,800	12,900	14,600	16,200	22,000	8,800(8.800-9.700)	11,400(11.400-13,000)	14,200	
Capacity	Heating 47°F Btu/h *1, *3	—	—	—	—	—	10,500	13,500	14,800	17,200	23,600	12,300(12,300-15,700)	16,300(16,300-18,500)	14,500(19,800)	
Capacity	Heating 17°F Btu/h *2	—	—	—	—	—	5,300	7,000	8,900	10,300	13,500	10,000	11,600	8,700(13,800)	
Power Consumption	Cooling W *1	840	1,130	1,400	1,600	2,170	890	1,310	1,380	1,580	2,220	980(290-1,250)	1,140(290-1,400)	1,430	
Power Consumption	Heating W *1	—	—	—	—	—	890	1,250	1,300	1,570	2,230	1,320(280-1,770)	1,590(280-2,050)	1,340 (2,840)	
EER	Cooling	10.1	11.2	10.4	10.1	10.5	9.9	9.8	10.6	10.3	9.9	—	—	—	
SEER		10.2	11.3	10.5	10.2	10.5	10	10.2	10.7	10.4	10.0	12.0	13.0	10	
HSPF		—	—	—	—	—	6.8	6.8	6.8	6.8	6.8	7.7	7.7	6.8	
COP	47°F *1	—	—	—	—	—	3.45	3.17	3.34	3.21	3.1	2.73	2.95	3.2	
<b>INDOOR UNIT</b>		<b>MS09TW</b>	<b>MS12TN</b>	<b>MS15TN</b>	<b>MS17TN</b>	<b>MS24WN</b>	<b>MSH09TW</b>	<b>MSH12TN</b>	<b>MSH15TN</b>	<b>MSH17TN</b>	<b>MSH24WN</b>	<b>MSZ09UN</b>	<b>MSZ12UN</b>	<b>MSH15EN</b>	
External Finish		White										White			
Power Supply	V, Phase, Hz	115,1,60	115,1,60	115,1,60	115,1,60	115,1,60	115,1,60	115,1,60	115,1,60	115,1,60	115,1,60	115,1,60	115,1,60	115,1,60	115,1,60
Max. Fuse Size	(Time Delay) Amp	15	15	15	15	15	15	15	15	15	15	15	15	20	
Min. Ampacity		0.5	0.6	0.6	0.7	1.1	0.5	0.6	0.6	0.7	1.1	0.5	0.6	17	
Fan Motor	F.L.A.	0.37	0.43	0.43	0.51	0.82	0.37	0.43	0.43	0.51	0.82	0.37	0.43	0.5	
Auxiliary Heater	Amps. (KW)	—	—	—	—	—	—	—	—	—	—	—	—	13.0 ( 1.5)	
Airflow Lo-Med-Hi	Dry CFM	191-237-289	360-395-452	360-395-452	406-441-491	402-484-565	198-244-297	360-395-452	360-395-452	406-441-491	402-484-565	184-237-297	360-395-452	280-375-425	
Airflow Lo-Med-Hi	Wet CFM	136-184-226	314-342-392	293-321-367	346-374-417	346-417-487	145-187-233	311-339-388	293-321-367	342-371-413	346-417-487	124-180-233	311-339-388	265-355-405	
Moisture Removal	Pints/h	2.3	3.2	4.7	5.1	7.6	2.3	3.3	4.7	5.1	7.3	2.3	2.8	4.4	
Sound Level	dB(A) Low-Med-High	26-31-36	36-39-42	36-39-42	40-43-45	39-43-47	26-31-36	36-39-42	36-39-42	40-43-45	39-43-47	22-29-36	35-39-42	48	
Cond. Drain Connection	O.D. Inches	5/8	5/8	5/8	5/8	5/8	5/8	5/8	5/8	5/8	5/8	5/8	5/8	5/8	
Indoor Unit Width	Inches	33-1/2	39-15/16	39-15/16	39-15/16	43-5/16	33-1/2	39-15/16	39-15/16	39-15/16	43-5/16	33-1/2	39-15/16	39-3/8	
Indoor Unit Depth	Inches	7-1/2	7-1/2	7-1/2	7-1/2	8-15/16	7-1/2	7-1/2	7-1/2	7-1/2	8-15/16	7-1/2	7-1/2	7	
Indoor Unit Height	Inches	10-15/16	12-5/8	12-5/8	12-5/8	12-13/16	10-15/16	12-5/8	12-5/8	12-5/8	12-13/16	10-15/16	12-5/8	14-3/16	
Weight	Pounds	20	31	31	31	40	20	31	31	31	40	20	31	37.5	
<b>OUTDOOR UNIT</b>		<b>MU09TW</b>	<b>MU12TN</b>	<b>MU15TN</b>	<b>MU17TN</b>	<b>MU24WN</b>	<b>MUH09TW</b>	<b>MUH12TN</b>	<b>MUH15TN</b>	<b>MUH17TN</b>	<b>MUH24WN</b>	<b>MUZ09UN</b>	<b>MUZ12UN</b>	<b>MUH15EN</b>	
External Finish		Munsell 5Y7/1	Munsell 5Y7/1	Munsell 5Y7/1	Munsell 5Y7/1	Munsell 5Y7/1	Munsell 5Y7/1	Munsell 5Y7/1	Munsell 5Y7/1	Munsell 5Y7/1	Munsell 5Y7/1	Munsell 5Y 8.0/3.3	Munsell 5Y 8.0/3.3	Munsell 5Y6.5/1	
Sound Level	dB(A)	46.0	49.0	52.0	52.0	55.0	47.0	49.0	53.0	53.0	55.0	49	49	55.0	
Power Supply	V, Phase, Hz	115,1,60	208/230,1,60	208/230,1,60	208/230,1,60	208/230,1,60	115,1,60	208/230,1,60	208/230,1,60	208/230,1,60	208/230,1,60	208/230, 1, 60	208/230, 1, 60	208/230,1,60	
Max. Fuse Size	(Time Delay) A	15.0	15.0	20.0	20.0	25.0	20.0	15.0	20.0	20.0	25.0	15	15	20.0	
Min. Ampacity		11.0	12.0	14.0	15.0	22.0	16.0	14.0	14.0	15.0	22.0	14	14	14.0	
Fan Motor	F.L.A.	0.6	0.42	0.52	0.52	0.87	0.6	0.42	0.52	0.75	0.87	0.43	0.43	0.5	
Compressor	Model (Type)	RH130WGJT	RH167RHDT	RH207RHDT	RH231RHDT	PH33NPBT	RH140WGJT	RH189RHDT	RH207RHDT	RH231RHDT	PH33NPBT	SHV-130FEA	SHV-130FEA	RH207RFL	
Compressor	R.L.A.	7.8	9.0	10.0	11.0	16.0	12.0	10.0	10.0	11.0	16.0	9.7	9.7	10.0	
Compressor	L.R.A.	41.0	29.0	35.0	38.0	58.0	42.0	35.0	35.0	38.0	58.0	41.0	41.0	35.0	
Refrigerant Control		Capillary Tube				Linear Expansion Valve	Capillary Tube				Linear Expansion Valve	Linear Expansion Valve	Linear Expansion Valve	Capillary Tube	
Defrost Method		—	—	—	—	—	Reverse Cycle				Reverse Cycle				
Outdoor Unit Width	Inches	30-3/4	30-3/4	33-7/16	33-7/16	34-1/4	30-3/4	30-3/4	33-7/16	34-1/4	34-1/4	28	28	33-1/2	
Outdoor Unit Depth	Inches	10-1/16	10-1/16	11-7/16	11-7/16	11-5/8	10-1/16	10-1/16	11-7/16	11-5/8	11-5/8	10-1/16	10-1/16	11-7/16	
Outdoor Unit Height	Inches	21-1/4	21-1/4	23-13/16	23-13/16	33-1/2	21-1/4	21-1/4	23-13/16	33-1/2	33-1/2	21-1/4	21-1/4	23-7/8	
Weight	Pounds	71.0	84.0	92.0	97.0	152	82.0	86.0	99.0	128.0	154	75	75	106.0	
Remote Controller		Wireless Type										Wireless Type			
Control Voltage	(By Built-In Transformer)	12VDC	12VDC	12VDC	12VDC	12VDC	12VDC	12VDC	12VDC	12VDC	12VDC	12VDC		12VDC	
Refrigerant Piping Size	(Liquid x Gas) Inches	1/4 x 3/8	1/4 x 1/2	1/4 x 5/8	1/4 x 5/8	3/8 x 5/8	1/4 x 3/8	1/4 x 1/2	1/4 x 5/8	1/4 x 5/8	3/8 x 5/8	1/4 x 3/8	1/4 x 1/2	1/4 x 5/8	
Between Indoor & Outdoor	Max. Piping (Height x Length) Ft.	25 x 49	25 x 49	25 x 49	25 x 49	25 x 50	25 x 49	25 x 49	25 x 49	25 x 49	25 x 50	25 x 49	25 x 49	25 x 49	

\*1,\*2,\*3 See page 27 for rating conditions.

LIMITED WARRANTY | Six-year warranty on compressor. One-year warranty on parts.

Specifications subject to change without notice.

# MSM MULTI

## WALL-MOUNTED SYSTEM

Air Conditioners



MS-NW Indoor Unit

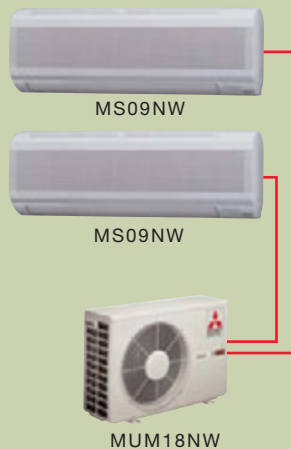
18,000 Btu/h Capacity

(Dual MS09 Units)

**Possibilities.** That's what the MSM system is about. A versatile multi-split design means two MS09NW indoor units can be connected to a single outdoor unit. MSM systems are adaptable, so you can install just one indoor unit first and add a second unit later. With just one outdoor unit you reduce electrical costs and leave a cleaner, better-looking exterior. The MSM system is the easy way to have efficient, zoned air conditioning.



The M-Series wireless remote controller puts you in command of your personal comfort.



*By replacing those window units with Mr. Slim, you'll be left with a clean and pleasing exterior. Add Line-Hide™ lineset cover system for enhanced beautification.*

Reference page 27 for details.



SPECIFICATIONS

MULTI WALL-MOUNTED AIR CONDITIONERS



SYSTEM		MSM18NW
Cooling Capacity	Btu/h *1	8,400 (Single) / 16,800 (Dual)
Power Consumption	W	850 (Single) / 1700 (Dual)
EER		9.9
SEER		10.0
<b>INDOOR UNIT</b>		<b>MS09NW (each)</b>
External Finish		White
Power Supply	V, Phase, Hz	115,1,60
Max. Fuse Size	(Time Delay) Amp	15
Min. Ampacity		0.5
Fan Motor	F.L.A.	0.37
Airflow Lo-Med-Hi	Dry CFM	208-265-328
Airflow Lo-Med-Hi	Wet CFM	177-226-279
Moisture Removal	Pints/h	2.3
Sound Level	dB(A)	42
Cond. Drain Connection	O.D. Inches	5/8
Indoor Unit Width	Inches	32-1/16
Indoor Unit Depth	Inches	7-3/16
Indoor Unit Height	Inches	10-13/16
Weight	Pounds	18
<b>OUTDOOR UNIT</b>		<b>MUM18NW</b>
External Finish		Munsell 5Y 6.5/1
Sound Pressure Level	dB(A)	56.5
Power Supply	V, Phase, Hz	208/230,1,60 (3-wire)
Max. Fuse Size	(Time Delay) A	15x2
Min. Ampacity		14x2
Fan Motor	F.L.A.	1.0
Compressor	Model (Type)	KH122WES x2
Compressor	R.L.A.	10x2
Compressor	L.R.A.	37x2
Refrigerant Control		Capillary Tube
Outdoor Unit Width	Inches	33-1/2
Outdoor Unit Depth	Inches	11-7/16
Outdoor Unit Height	Inches	23-7/8
Weight	Pounds	122
Remote Controller		Wireless Type
Control Voltage	(By Built-In Transformer)	12VDC
Refrigerant Piping Size	(Liquid x Gas) Inches	1/4 x 3/8

\*1 See page 27 for rating conditions.

LIMITED WARRANTY | Six-year warranty on compressor. One-year warranty on parts.

Specifications subject to change without notice.

# INVERTER

INVERTER DRIVEN MULTI-ZONE HEAT PUMP SYSTEMS



MXZ30TN Outdoor Unit

INVERTER

## Inverter Technology for Superior Year-Round Comfort and Performance

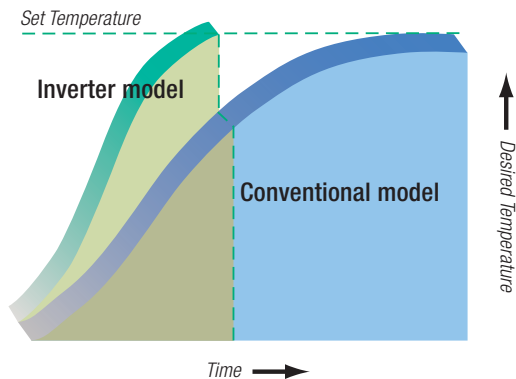
Mitsubishi Electric's MXZ and MSZ outdoor units employ inverter compressor technology (Variable Frequency Drive) to provide exceptional high-speed cooling and heating performance.

In response to indoor and outdoor temperature fluctuations, the system varies the compressor speed, thereby reducing power consumption for extra energy savings. The system adjusts itself precisely to the level needed to maintain a consistently comfortable indoor environment.



FEATURES	BENEFITS
<b>USES PROVEN INVERTER COMPRESSOR TECHNOLOGY</b>	Provides powerful, quiet, and energy-efficient cooling and heating, so your building will be pleasant year-round.
<b>OFFERS MORE EFFICIENCY</b>	Our systems use less energy under milder conditions, so you'll spend less money for operation and enjoy greater comfort.
<b>MAINTAINS CONSTANT TEMPERATURE LEVELS</b>	Inverter technology eliminates annoying swings in temperature, which can cause drafts in any room. You'll stay comfortable year-round.
<b>PROVIDES SUPERIOR HEATING PERFORMANCE</b>	Compressor rotation speed is greatly accelerated to help improve the heat exchange between indoor and outdoor fan coils. Even at 0°F Mr. Slim can provide 70% of the rated heating capacity.

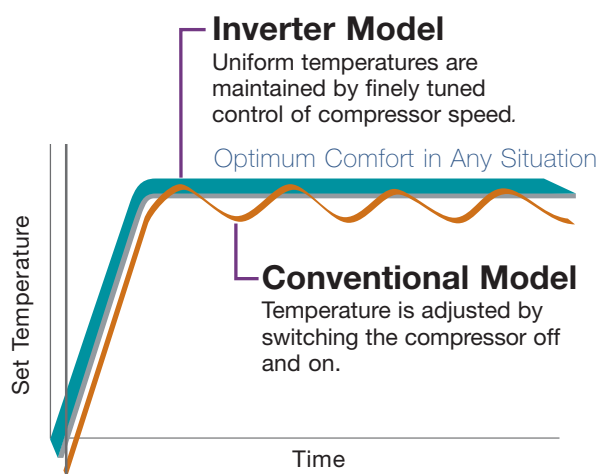




## High-speed Cooling and Heating

Compressor speed is controlled to maximize efficiency, changing speeds according to the cooling and heating load of a room.

The desired temperature is, therefore, reached much faster, saving both energy and cash.



## Optimum Comfort Year-round

Unlike conventional units that start and stop repetitively, inverter units are able to detect subtle fluctuations in room temperature and adjust compressor speed up or down automatically. The result is less noticeable temperature swings and a more comfortable climate.



## Extra Energy Savings

For optimum performance, inverter technology controls the electrical current to the compressor, delivering only the energy needed to satisfy the cooling and heating load of a room, thereby reducing energy consumption.

*When operating just one indoor unit at a time the MXZ outdoor inverter unit can provide up to 50% better heating performance when compared to a standard single-speed heat pump system.*



**MSH15 Max Heat Capacity:**

**23,180 Btu/h**

(See page 15 for more details.)



**Heat Capacity:  
respectable 14,800 Btu/h**

Ask about how the CITY MULTI® and the Mr. Slim® inverter systems give you even greater performance capabilities and design flexibility, making Mitsubishi Electric products the best choice for any of your cooling and heating applications.

# MXZ

## INVERTER DRIVEN MULTI-ZONE HEAT PUMP SYSTEMS

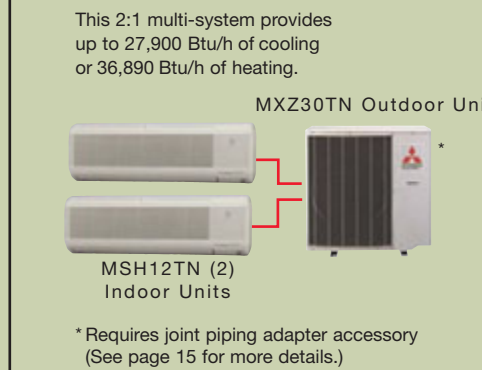
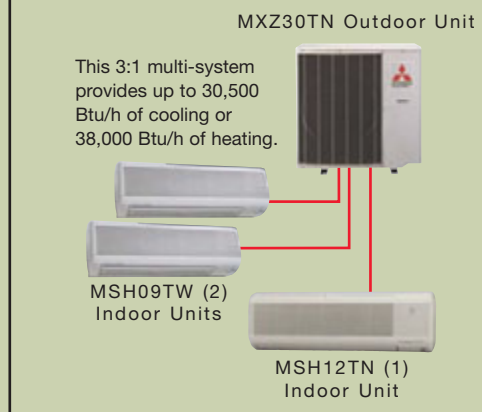
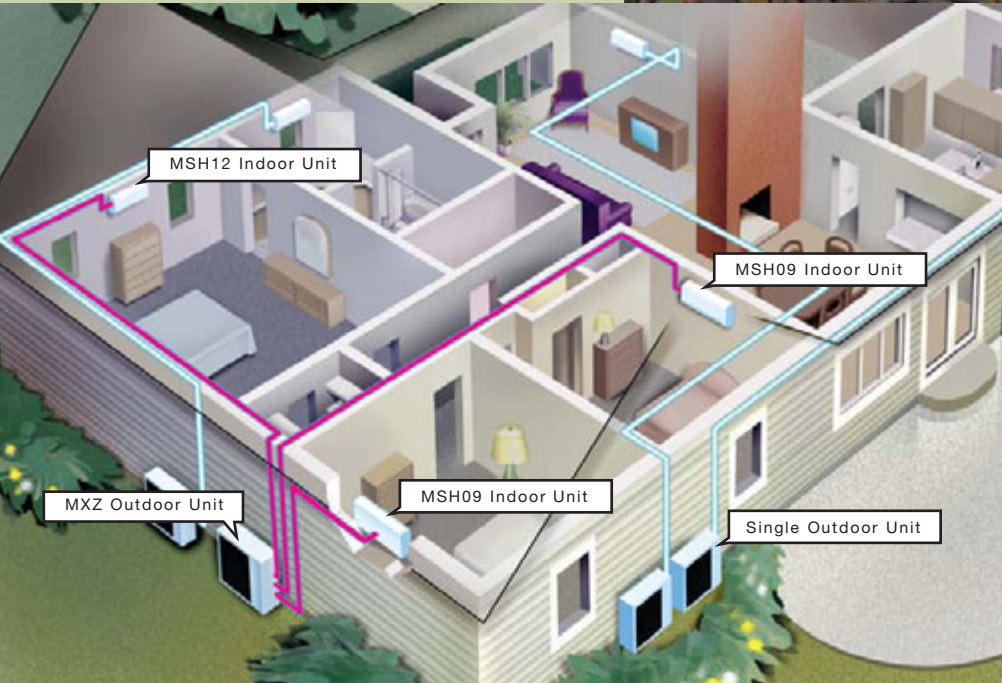


### INVERTER

MXZ30TN Outdoor Unit

**30,000 Combined  
Rated Btu/h Capacity**

Are you looking to add superior cooling or heating to more than one room? The MXZ system is the ideal solution. It delivers powerful cooling and heating with up to three wall-mounted indoor units and only one outdoor unit, giving you greater design flexibility and multi-zoned air conditioning. The MXZ two-to-one or three-to-one system provides the flexibility of up to seven different indoor unit combinations. Two popular examples are shown to the lower right.





**SPECIFICATIONS**

**MXZ30TN HEAT PUMPS**

REQUIRES CONNECTION OF AT LEAST TWO INDOOR UNITS FOR PROPER OPERATION.



SYSTEM		MXZ30TN: MSH09TW(2), MSH12TN(1)	
Capacity	Cooling Btu/h *1	28,400	
Capacity	Heating 47°F Btu/h *1	28,600	
Capacity	Heating 17°F Btu/h *2	18,100	
Power Consumption	Cooling W *1	3,550	
Power Consumption	Heating W *1	2,720	
Power Consumption	Heating 17°F Btu/h *2	2,310	
SEER	Cooling	11.0	
HSPF IV (V)	Heating	7.5	
COP	Heating 47°F *1	3.08	
OUTDOOR UNIT		MXZ30TN	
External Finish		Munsell 5Y 8/1	
Sound Level	dB(A)	48.0	
Power Supply	V, Phase, Hz	208 / 230, 1,60	
Max. Fuse Size	(Time Delay) Amp	30.0	
Min. Ampacity		25.0	
Fan Motor	F.L.A.	0.6	
Compressor	Model (Type)	THV-247FA	
Compressor	Winding Resistance (@ 68°F)Ω	UV0.61 V-W0.61 W-U0.61	
Compressor	R.L.A.	10.0	
Compressor	L.R.A.	37.0	
Refrigerant Control		LEV	
Defrost Method		Reverse Cycle	
Outdoor Unit Width	Inches	35-7/16	
Outdoor Unit Depth	Inches	12-5/8(+1-3/8 w/feet)	
Outdoor Unit Height	Inches	35-7/16	
Weight	Pounds	179.0	
Remote Controller		Wireless Type	
Control Voltage	(By Built-In Transformer)	12VDC	
Refrigerant Piping Size	(Liquid x Gas) Inches	A= 1/4 x 1/2, B= 1/4 x 3/8, C= 1/4 x 3/8	

\*1, \*2, See page 27 for rating conditions.

LIMITED WARRANTY | Six-year warranty on compressor. One-year warranty on parts.

Model Combination	Cooling Capacity (Btu/h)*1				Outdoor Unit Power Consumption (w)	Current (AMP.)	
	UNIT (1)	UNIT (2)	UNIT (3)	TOTAL (Min-Max)		208V	230V
MSH09TW	8,800	-	-	8,800 (4,160-9,210)	1,030 (510-1,280)	4.5	4.0
MSH12TN	12,900	-	-	12,900 (5,600-15,350)	1,250 (510-1,680)	5.4	4.9
MSH15TN	14,600	-	-	14,600 (5,600-17,010)	1,250 (510-1,780)	5.4	4.9
MSH17TN	16,200	-	-	16,200 (6,470-18,720)	2,200 (550-2,620)	9.5	8.6
MSH09TW(2)	8,800	8,800	-	17,600 (5,470-18,680)	2,200 (550-3,230)	9.5	8.6
MSH09TW+MSH12TN	8,800	12,900	-	21,700 (6,240-22,760)	2,280 (540-3,270)	9.9	8.9
**MSH09TW+MSH15TN	8,800	14,600	-	23,400 (6,240-24,030)	2,280 (540-3,430)	9.9	8.9
**MSH09TW+MSH17TN	8,800	16,200	-	25,000 (6,220-27,170)	2,680 (550-4,000)	11.6	10.5
**MSH12TN(2)	12,900	12,900	-	25,800 (6,300-27,900)	2,700 (540-4,100)	11.7	10.6
**MSH09TW(3)	8,800	8,800	8,800	26,400 (9,740-29,150)	3,500 (770-4,500)	15.1	13.6
MSH09TW(2)+MSH12TN(1)	7,370	7,370	13,660	28,400 (9,940-30,500)	3,800 (810-4,610)	16.4	14.9

Model Combination	Heating Capacity (Btu/h)*1				Outdoor Unit Power Consumption (W)	Current (AMP.)	
	UNIT (1)	UNIT (2)	UNIT (3)	TOTAL (Min-Max)		208V	230V
MSH09TW	10,500	-	-	10,500 (5,790-16,950)	1,100 (560-1,990)	4.8	4.3
MSH12TN	13,500	-	-	13,500 (6,420-22,400)	1,200 (560-2,340)	5.2	4.7
MSH15TN	14,800	-	-	14,800 (6,470-23,180)	1,400 (570-2,480)	6.1	5.5
MSH17TN	17,200	-	-	17,200 (6,520-23,550)	1,600 (600-2,710)	6.9	6.3
MSH09TW(2)	10,500	10,500	-	21,000 (6,520-26,900)	1,950 (620-2,900)	8.4	7.6
MSH09TW+MSH12TN	10,500	13,500	-	24,000 (6,730-30,000)	2,210 (640-3,130)	9.6	8.6
**MSH09TW+MSH15TN	10,500	14,800	-	25,300 (7,490-32,240)	2,400 (640-3,360)	10.4	9.4
**MSH09TW+MSH17TN	10,500	17,200	-	27,700 (8,140-37,100)	2,700 (690-3,900)	11.7	10.6
**MSH12TN(2)	13,500	13,500	-	27,000 (7,660-36,890)	2,520 (650-3,850)	10.9	9.9
**MSH09TW(3)	9,530	9,530	9,530	28,590 (8,900-37,500)	2,720 (710-3,920)	11.8	10.6
MSH09TW(2)+MSH12TN(1)	7,820	7,820	12,960	28,600 (9,040-38,000)	2,800 (710-3,970)	12.1	11.0

\*1 See page 27 for rating conditions.

All models 60 Hz. Refer to the *Service Manual* for additional indoor and outdoor unit specifications.

\*\*This combination requires joint piping adapter accessory. Please refer to charts below for more details.

MXZ30TN Outdoor Unit Refrigerant Piping Size		
Circuit	Liquid	Suction
A	1/4	1/2
B	1/4	3/8
C	1/4	3/8

JOINT PIPING ACCESSORIES				
MXZ30TN Outdoor Unit Circuits				
COMBINATIONS	A	B	C	Part #
	⑨	09	09	MAC455JP
	⑮	09	-	MAC456JP
	⑰	09	-	MAC456JP
	12	⑫	-	MAC454JP
	-	09	09	-
	12	09	-	-
12	09	09	-	

FLARED CONNECTIONS	
Pipe Length and Height Difference	
Limits	
Pipe Length Per Indoor Unit	82 ft. Max.
Total Pipe Length for Multi-System	197 ft. Max.
Height Difference	33 ft. Max.
No. of Bends Per Indoor Unit	25 Max.
Total No. of Bends for Multi-System	60 Max.

Specifications subject to change without notice.

# P-SERIES

LARGE RESIDENTIAL, VARIED  
COMMERCIAL AND INSTITUTIONAL

The Mr. Slim® P-Series delivers flexible and convenient cooling and heating solutions to almost any commercial, institutional or large residential application. Whether in a church, office school, building, nursing home, restaurant, retail store, or even equipment room, the compact design of P-Series indoor units makes cooling and heating difficult spaces a *breeze*. With wall-mounted, ceiling-recessed, and ceiling-suspended options, the P-Series is the perfect solution for almost any building. The P-Series provides up to 42,000 Btu/h of cooling or heating.

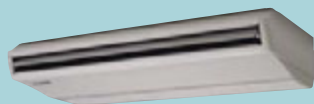
## Flexible Control Options

Convenient and efficient zone control means you can cool or heat only the spaces that are in use. You can control each unit individually or up to 50 different units from a single remote

P-Series  
Remote Controller



PK/PKH Wall-mounted  
Air Conditioners and  
Heat Pumps  
[pg.18]



PC/PCH Ceiling-suspended  
Air Conditioners and  
Heat Pumps  
[pg.21]



PL/PLH Ceiling-recessed  
Air Conditioners and  
Heat Pumps  
[pg.24]

controller. You can even have single or dual controllers connected to one system. The controller does not even have to be in the space shared with the indoor unit, which measures the room temperature.

## Low Ambient Operation

This feature allows for a space to be air-conditioned by the PU/H-EK line of products even when it is 23°F outside. This feature is important when dealing with electronic equipment rooms, telecom substations, surveillance mechanical rooms, restaurant kitchens, and more. Our wind baffle accessory is required when PU/H-EK models are

installed in cooling applications down to 0°F.

## Redi-charged Systems

P-Series outdoor units come with enough refrigerant to be installed up to 100 feet away from the indoor units. Line sets can be run to a maximum distance of 164 feet when additional charge is added (PU/H-EK).

## Hot-start System

Mr. Slim heat pumps use our Hot-start Technology to provide warmth from the beginning by ramping up fan speed as the coil warms. So when you want warm air, that's what you'll get.







## Installation Service and Maintenance Ease

P-Series outdoor units are designed with easy service and maintenance in mind. Maintenance points are located behind easy-access panels to make installation and servicing a breeze for a trained technician.

Four-way piping access allows connection in four directions: front, rear, right, and base (all PU/H-EK models). P-Series indoor units incorporate a washable-filter design, meaning less filter replacement headaches.

Only two non-polar wires are needed to connect the remote controller to the indoor and outdoor unit, a feature which helps avoid installation errors. These control wires can also be extended up to 1,650 feet.

### Mr. Slim® Outdoor Unit Comparison

Choose either the Vertical Discharge or Slim-line Horizontal Discharge model to fit your application.

#### PU/PUH Slim-line Horizontal Air Discharge Model

Mr. Slim's compact, horizontal air discharge units have a small footprint to fit into tight spaces. This feature allows for greater application freedom as you can place in a tight alley-way or mount on an exterior wall.



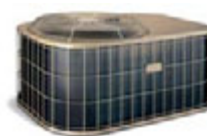
PU/PUH  
[EK]

#### FEATURES:

- 12,000 to 42,000 Btu/h
- Low ambient operation to 23°F or 0°F with optional wind baffle
- Compact, space-saving design
- Quiet operation
- Easy to service and maintain unit through front access panel
- Redi-charged up to 100 ft.

#### PUG/PUGH Vertical Air Discharge Model

The vertical discharge outdoor when combined with the Mr. Slim P-Series indoor units, makes for one of the most cost-effective ductless systems on the market.



PUG/PUGH  
[AYB]

#### FEATURES:

- 18,000 to 42,000 Btu/h models
- Vertical air discharge
- Compact design
- Pre-charged for 25 ft.
- Perfect for rooftop applications
- Mesh coil protection guard

### FEATURES

### BENEFITS

QUIET OPERATION	You can hold a board meeting or teach a class in the quiet comfort of Mr. Slim® P-Series.
NO DUCTWORK	There's no need to shut down for major construction. Mr. Slim installs quickly and easily.
ZONE CONTROL	Cool and heat only those spaces desired for maximum control and energy efficiency.
DEHUMIDIFICATION	Drier air means healthier air and less damage to books or furniture.
ADVANCED MICROPROCESSOR CONTROLS	Built-in electronics ensure efficient operation and maximum performance for optimum comfort.
LOW AMBIENT COOLING OPTION	Perfect for computer network centers and telecom equipment rooms that need help to stay cool even during winter months.

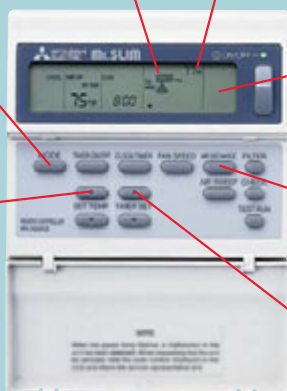
#### FAN SPEED INDICATOR.

This feature displays the fan speed setting (HIGH or LOW).

**OPERATION MODE SETTING.** The desired COOL/ DRY, AUTO, or HEAT operation can be selected by pressing **MODE**.

**TEMPERATURE SETTING.** The LCD indicator displays the set temperature in units of 2°F.

**MEMORY.** Stores functions.



#### ROOM TEMPERATURE DISPLAY.

The room temperature display is measured at the indoor unit.

**SELF-DIAGNOSTIC DISPLAY.** The LCD microprocessor quickly detects malfunctions and pinpoints the location which is then shown on the LCD display.

#### VANE CONTROL.

The angle of the air outlet vanes can be adjusted to one of four positions by pressing the air discharge UP/DOWN button.

**24-HOUR ON/OFF TIMER.** Operation can be set to start and/or stop at specified times. This sequence may be repeated daily if desired.

# PK/PKH (FK,FL)

## WALL-MOUNTED SERIES



PK/PKH Indoor Unit  
12,000 to 36,000 Btu/h  
Capacity

Similar to the MS/MSH wall-mounted models, the PK/PKH-Series fills larger spaces with substantial cooling or heating from a compact, wall-mounted package. Walk into any room where a PK system is installed, and all you'll notice is the perfectly comfortable climate. What you may not notice is the unit itself, for it mounts high on the wall and blends into most spaces.

### Auto Flap Shutter

With a simple flip of the *Off* switch, the vane closes to cover the air outlet for a clean presentation while not in use. During operation the vane can be adjusted or will automatically adjust itself to the perfect position to direct the airflow towards the floor in heating mode or horizontally in cooling mode, keeping the room temperature even and comfortable.

### Slim and Lightweight Indoor Unit

The largest PK unit measures only about 66" wide, 13" tall, and 9" deep and weighs 66 pounds. This feature allows for easy



PK/PKH-FK

These Mr. Slim systems come with either a wired (FK) or wireless remote controller (FL) that puts you in command of your personal comfort.



PK/PKH-FL

installation high on most walls and above windows and doorways. In most cases, just two licensed installers can do the installation in about a day.

### Easy-clean Filters

Convenient tabs enable the washable filters to be quickly and easily removed for fast cleaning. You won't need to replace the filters as with other systems, saving money and time.

### Easy to Install

Mr. Slim® PK-Series models require no ductwork. They don't need a huge hole cut in a wall as with motel-type or window-type units. In fact PK systems install into some of the toughest spaces even on brick and block walls because only a small three-inch round

opening in the wall or ceiling is needed.

### Ultimate Comfort Meets Ultimate Convenience

Select from wall-mounted, hard-wired controller (FK) and wireless controller (FL) for ultimate comfort control. The hand-held Mr. Slim LCD wireless remote controller is easier to use than most TV remotes. The set-temperature display is large and easy to read. Using the 24-hour timer, unit operation can be set to start and stop at specified times and to repeat daily. And the convenient remote provides easy control of the *Fan Speed*, as well as the COOL, HEAT, and DRY modes from anywhere in the room.



**SPECIFICATIONS WITH HORIZONTAL AIR SLIM-LINE OUTDOOR UNIT**  
**PK/PKH WALL-MOUNTED** AIR CONDITIONERS AND HEAT PUMPS  
 0°F LOW AMBIENT CAPABLE†



SYSTEM		PK12FK	PK18FK/FL	PK24FK/FL	PK30FK/FL	PK36FK/FL	PKH18FK/FL	PKH24FK/FL	PKH30FK/FL	PKH36FK/FL
Capacity	Cooling Btu/h *1	12,500	18,500	24,000	30,000	34,200	18,000	24,000	30,000	34,200
Capacity	Heating Btu/h *1,*3	—	—	—	—	—	18,600 (24,100/25,100)	25,000 (30,500/31,500)	33,000 (39,100/40,500)	38,000 (44,100/45,500)
Capacity	Heating Btu/h *2,*3	—	—	—	—	—	10,700 (16,200/17,200)	14,700 (20,200/21,200)	19,000 (25,100/26,500)	19,600 (25,700/27,100)
Power Consumption	Cooling kW *1	1.21	1.75	2.34	3.06	3.47	1.79	2.36	3.12	3.44
Power Consumption	Heating kW *1,*3	—	—	—	—	—	1.56 (3.16/3.46)	2.37 (3.97/4.27)	3.02 (4.82/5.22)	3.54 (5.34/5.74)
Power Consumption	Heating kW *2,*3	—	—	—	—	—	1.34 (2.94/3.24)	1.92 (3.52/3.82)	2.48 (4.28/4.68)	2.65 (4.45/4.85)
EER	Cooling	10.3	10.6	10.3	9.8	9.9	10.1	10.2	9.6	9.9
SEER		11.5	11.3	10.6	10.7	10.2	11.1	10.2	10.6	10.5
HSPF		—	—	—	—	—	7.2	6.8	7.1	6.9
COP	Heating *1	—	—	—	—	—	3.5	3.1	3.2	3.1
COP	Heating *2	—	—	—	—	—	2.3	2.2	2.2	2.2
<b>INDOOR UNIT</b>		<b>PK12FK</b>	<b>PK18FK/FL</b>	<b>PK24FK/FL</b>	<b>PK30FK/FL</b>	<b>PK36FK/FL</b>	<b>PKH18FK/FL</b>	<b>PKH24FK/FL</b>	<b>PKH30FK/FL</b>	<b>PKH36FK/FL</b>
External Finish		Munsell 3.4Y7.7/0.8								
Power Supply	V, Phase, Hz	115,1,60	115,1,60	115,1,60	115,1,60	115,1,60	208/230,1,60	208/230,1,60	208/230,1,60	208/230,1,60
Max. Fuse Size	(Time Delay) Amp	15	15	15	15	15	15	15	15	15
Min. Ampacity	Amp	1	1	1	2	2	12	12	13	13
Fan Motor	F.L.A.	0.7	0.7	0.7	1	1	0.5	0.5	0.6	0.6
Auxiliary Heater	A (kW)	—	—	—	—	—	7.6/8.4 (1.6/1.9)	7.6/8.4 (1.6/1.9)	8.7/9.6 (1.8/2.2)	8.7/9.6 (1.8/2.2)
Airflow Lo-Hi	Dry CFM	350-490	530-710	530-710	780-990	780-990	530-710	530-710	780-990	780-990
Airflow Lo-Hi	Wet CFM	320-440	480-640	480-640	700-890	700-890	480-640	480-640	700-890	700-890
Moisture Removal	Pints/h	3.8	5.3	7.2	9.6	10.5	5.3	7	9.1	10.5
Sound Pressure Level Lo-Hi	dB(A)	38-45	41-48	41-48	44-49	44-49	41-48	41-48	44-49	46-50
Cond. Drain Connection	Inches	1.0" O.D. (3/16 I.D.)								
Indoor Unit Width	Inches	49-1/4	55-1/8	55-1/8	66-3/16	66-3/16	55-1/8	55-1/8	66-3/16	66-3/16
Indoor Unit Depth	Inches	7-7/8	9-1/4	9-1/4	9-1/4	9-1/4	9-1/4	9-1/4	9-1/4	9-1/4
Indoor Unit Height	Inches	11-13/16	13-3/8	13-3/8	13-3/8	13-3/8	13-3/8	13-3/8	13-3/8	13-3/8
Weight	Pounds	37	53	53	62	62	57	57	66	66
<b>OUTDOOR UNIT†</b>		<b>PU12EK</b>	<b>PU18EK</b>	<b>PU24EK</b>	<b>PU30EK</b>	<b>PU36EK</b>	<b>PUH18EK</b>	<b>PUH24EK</b>	<b>PUH30EK</b>	<b>PUH36EK</b>
External Finish		Munsell 5Y 7/1								
Sound Pressure Level	dB(A)	50.0	53.0	55.0	55.0	55.0	53.0	55.0	55.0	55.0
Power Supply	V, Phase, Hz	208/230,1,60	208/230,1,60	208/230,1,60	208/230,1,60	208/230,1,60	208/230,1,60	208/230,1,60	208/230,1,60	208/230,1,60
Max. Fuse Size	(Time Delay) Amp	15.0	20.0	20.0	30.0	30.0	20.0	20.0	30.0	30.0
Min. Ampacity	Amp	11.0	16.0	16.0	20.0	22.0	16.0	16.0	20.0	22.0
Fan Motor	F.L.A.	0.65	0.75	0.65+0.65	0.65+0.65	0.75+0.75	0.75	0.65+0.65	0.75+0.75	0.75+0.75
Compressor	Model (Type)	RH167NAB	RH247NAB	NH33NBD	NH41NAD	NH47NAD	RH247NAB	NH33NBD	NH41NAD	NH47NAD
Compressor	R.L.A.	8.9	12.0	11.5	14.0	17.5	12.0	11.5	14.0	17.5
Compressor	L.R.A.	29.0	37.0	54.0	73.0	87.0	37.0	54.0	73.0	87.0
Crankcase Heater	A(W)	0.11/0.12 (23/28)	0.11/0.12 (23/28)	0.16/0.17 (33/39)	0.16/0.17 (33/39)	0.16/0.17 (33/39)	0.11/0.12 (23/28)	0.16/0.17 (33/39)	0.16/0.17 (33/39)	0.16/0.17 (33/39)
Refrigerant Control		Capillary Tube								
Defrost Method		—	—	—	—	—	Reverse Cycle			
Outdoor Unit Width	Inches	34-1/4	34-1/4	34-1/4	34-1/4	38-3/16	34-1/4	34-1/4	38-3/16	38-3/16
Outdoor Unit Depth	Inches	11-5/8	11-5/8	11-5/8	11-5/8	13-9/16	11-5/8	11-5/8	13-9/16	13-9/16
Outdoor Unit Height	Inches	25-9/16	33-1/2	49-9/16	49-9/16	49-9/16	33-1/2	49-9/16	49-9/16	49-9/16
Weight	Pounds	105.0	154.0	207.0	208.0	220.0	131.0	202.0	245.0	246.0
Remote Controller		Hard-wired (FK) or Wireless (FL) With Indoor Unit								
Control Voltage	(By Built-In Transformer)	12VDC	12VDC	12VDC	12VDC	12VDC	12VDC	12VDC	12VDC	12VDC
Refrigerant Piping Size	(Liquid x Gas) Inches	3/8 x 5/8	3/8 x 5/8	3/8 x 5/8	1/2 x 3/4	1/2 x 3/4	3/8 x 5/8	3/8 x 5/8	1/2 x 3/4	1/2 x 3/4

\*1,\*2,\*3 See page 27 for rating conditions.

LIMITED WARRANTY | Six-year warranty on compressor. One-year warranty on parts.

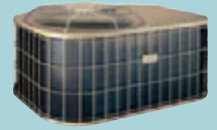
†0°F low ambient operation possible on slim-line horizontal discharge outdoor units with optional wind baffle.

Specifications subject to change without notice.



SPECIFICATIONS WITH VERTICAL AIR DISCHARGED OUTDOOR UNIT

PKG/PKGH (FK, FL) WALL-MOUNTED AIR CONDITIONERS AND HEAT PUMPS



SYSTEM		PKG18FK/FL	PKG24FK/FL	PKG30FK/FL	PKG36FK/FL	PKG18FK/FL	PKG24FK/FL	PKG30FK/FL	PKG36FK/FL
Capacity	Cooling BTU/h *1	19,400	23,400	29,200	34,200	17,900	23,400	29,600	34,200
Capacity	Heating BTU/h *1,*3	—	—	—	—	17,400(23,900)	23,000(29,500)	30,000(37,500)	35,000(42,500)
Capacity	Heating BTU/h *2,*3	—	—	—	—	9,000(15,500)	13,700(20,200)	16,800(24,300)	19,200(26,700)
EER	Cooling	10.65	9.80	10.20	10.25	10.0	9.2	9.85	9.85
SEER		11.60	11.00	11.60	11.40	11.5	10.5	11.0	10.7
HSPF		—	—	—	—	7.5	7.45	7.80	7.4
COP	Heating *1	—	—	—	—	3.38	3.1	3.44	3.22
COP	Heating *2	—	—	—	—	2.12	2.4	2.36	2.30
<b>INDOOR UNIT</b>		<b>PK18FK/FL</b>	<b>PK24FK/FL</b>	<b>PK30FK/FL</b>	<b>PK36FK/FL</b>	<b>PKH18FK/FL</b>	<b>PKH24FK/FL</b>	<b>PKH30FK/FL</b>	<b>PKH36FK/FL</b>
External Finish		Munsell 3.4Y7.7/0.8							
Power Supply	V, Phase, Hz	115,1,60	115,1,60	115,1,60	115,1,60	208/230,1,60	208/230,1,60	208/230,1,60	208/230,1,60
Max. Fuse size	(Time Delay) Amp	15	15	15	15	15	15	15	15
Min. Ampacity	Amp	1	1	2	2	12	12	13	13
Fan Motor	F.L.A.	0.7	0.7	1	1	0.5	0.5	0.6	0.6
Auxiliary Heater	A (kW)	—	—	—	—	7.6/8.4 (1.6/1.9)	7.6/8.4 (1.6/1.9)	8.7/9.6 (1.8/2.2)	8.7/9.6 (1.8/2.2)
Airflow Lo-Hi	Dry CFM	530-710	530-710	780-990	780-990	530-710	530-710	780-990	780-990
Airflow Lo-Hi	Wet CFM	480-640	480-640	700-890	700-890	480-640	480-640	700-890	700-890
Moisture Removal	Pints/h	5.3	7.2	9.6	10.5	5.3	7	9.1	10.5
Sound Pressure Level Lo-Hi	dB(A)	41-48	41-48	44-49	44-49	41-48	41-48	44-49	46-50
Cond. Drain Connection	Inches	13/16 O.D. (1-1/16 I.D. or 7/8 I.D.)							
Indoor Unit Width	Inches	55-1/8	55-1/8	66-3/16	66-3/16	55-1/8	55-1/8	66-3/16	66-3/16
Indoor Unit Depth	Inches	9-1/4	9-1/4	9-1/4	9-1/4	9-1/4	9-1/4	9-1/4	9-1/4
Indoor Unit Height	Inches	13-3/8	13-3/8	13-3/8	13-3/8	13-3/8	13-3/8	13-3/8	13-3/8
Weight	Pounds	53	53	62	62	57	57	66	66
<b>OUTDOOR UNIT<sup>1</sup></b>		<b>PUG18AYB</b>	<b>PUG24AYB</b>	<b>PUG30AYB</b>	<b>PUG36AYB</b>	<b>PUGH18AYB</b>	<b>PUGH24AYB</b>	<b>PUGH30AYB</b>	<b>PUGH36AYB</b>
External Finish		Baked Polyester Powder Coating							
Sound Pressure	dB(A)	74	75	75	77	C72, H76	C74, H75	C77, H80	C76, H83
Max. Fuse Size 208/230V 1PH	(Time Delay) Amp	20	25	30	35	20	25	30	35
Min. Ampacity 208/230V 1PH	Amp	12.5	12.8	19.8	22.1	12.5	12.8	19.8	22.1
Fan Motor 208/230V 1PH	F.L.A.	0.5	0.5	1.4	1.3	0.5	0.5	1.4	1.3
Compressor 208/230V 1PH	R.L.A.	7.3	9.6	12.6	14.0	7.6 / 6.2	10.6 / 8.9	12.5 / 10.1	17.3 / 16.3
Compressor 208/230V 1PH	L.R.A.	45	68	82	94	45	68	82	94
Compressor 208/230V 1PH	F.L.A.	9.6	12.8	14.7	16.6	9.6	12.8	14.7	16.6
Unit Total 208/230V 1PH	Unit Total F.L.A.	10.1	13.3	16.1	17.9	10.1	13.3	16.1	17.9
Crankcase Heater		Yes	Yes	Yes	Yes	Yes	Yes	Yes	Yes
Refrigerant Control		Metering orifice installed at the outdoor unit for cooling operation				Fixed orifice at outdoor unit for cooling Capillary tube installed at the indoor unit for heating operation			
Defrost Method		Reverse Cycle							
Outdoor Unit Width	Inches	35	35	35	35	35	35	35	37
Outdoor Unit Depth	Inches	23	23	23	23	23	23	23	23
Outdoor Unit Height	Inches	17	17	19	19	19	19	25	27
Weight	Pounds	192	192	192	192	171	171	189	209
Remote Controller		Hardwired (FK) or Wireless (FL) With Indoor Unit							
Control Voltage	(By Built-In Transformer)	DC12V	DC12V	DC12V	DC12V	DC12V	DC12V	DC12V	DC12V
Refrigerant Piping Size	(Liquid x Gas) Inches	3/8 x 5/8	3/8 x 5/8	1/2 x 3/4	1/2 x 3/4	3/8 x 5/8	3/8 x 5/8	1/2 x 3/4	1/2 x 3/4

\*1,\*2,\*3 See page 27 for rating conditions.

LIMITED WARRANTY | Six-year warranty on compressor. One-year warranty on parts.

Operates in cooling mode to 50°F or to 25°F with optional low ambient kit.

Specifications subject to change without notice.

# PC/PCH

CEILING-SUSPENDED SERIES



PC/PCH Indoor Unit

**24,000 to 42,000  
Btu/h Capacity**

Powerful cooling and heating performance is what the PC/PCH-Series is designed to deliver. This ceiling-suspended unit delivers enough cold or hot air to make any space more comfortable. Manually adjusted jumbo swing louvers direct the airflow left or right, covering the entire space quietly. Accessory filters are available to increase efficiency and increase the time span between service calls. The PC/PCH-Series is perfect for restaurants, kitchens, and other large commercial spaces where ovens and other equipment add to an already taxed cooling or heating load.

## Control Airflow Angle for Better Coverage

With the wired remote controller, four different airflow positions can be set. When using the *Autovane* mode during Cooling, the angle self-adjusts into a horizontal position to circulate cold air more effectively. During Heating, the vane forces the hot air downward toward the floor, where it will rise and circulate, keeping your room comfortable from the top to bottom.

## Warm Air with No Drafts

Mr. Slim® heat pumps use our Hot-start technology to provide warmth from the beginning. So when you want warm air, you'll get it.



*All Mr. Slim PC/PCH-Series models come with a wired remote controller that puts you in command of your personal comfort. Wireless controller is available in an accessory kit.*

## Bring Outside Air In

With minimal on-site work, ducting can be installed to bring in outside air, creating a healthier indoor environment.

## Automatic Cooling/Heating Changeover (Heat Pumps)

When set to *Auto*, PCH units will automatically switch back and forth from cooling to heating operation to compensate for the temperature fluctuation in a room. This feature means total hands-free comfort and efficient air-conditioning of your space.





**SPECIFICATIONS WITH HORIZONTAL AIR SLIM-LINE OUTDOOR UNIT**  
**PC/PCH CEILING-SUSPENDED** AIR CONDITIONERS  
 °F LOW AMBIENT CAPABLE<sup>1</sup> AND HEAT PUMPS



SYSTEM		PC24GK	PC30GK	PC36GK	PC42GK	PCH24GK	PCH30EK	PCH36GK	PCH42GK
Capacity	Cooling Btu/h *1	25,000	31,000	36,500	42,500	24,000	30,000	35,400	42,000
Capacity	Heating Btu/h **1,*3	—	—	—	—	27,000 (34,000/35,500)	33,000 (41,500/00)	38,900 (45,500/47,500)	45,000 (52,500/54,500)
Capacity	Heating Btu/h **2,*3	—	—	—	—	14,800 (21,800/23,300)	18,000 (26,500)	21,000 (28,500/30,500)	23,800 (31,300/33,300)
Power Consumption	Cooling kW *1	2.61	3.18	3.62	4.10	2.51	3.06	3.60	4.10
Power Consumption	Heating kW **1,*3	—	—	—	—	2.46 (4.49/4.94)	3.13 (5.63)	3.32 (5.57/6.08)	3.76 (6.01/6.25)
Power Consumption	Heating kW **2,*3	—	—	—	—	1.95 (3.98/4.43)	2.6 (5.1)	2.63 (4.88/5.39)	3.00 (5.25/5.76)
EER	*1	9.6	9.7	10.1	10.4	9.6	9.8	9.8	10.5
SEER		10.4	10	10.3	10.8	10.3	10	10.3	10.3
HSPF		—	—	—	—	6.8	7.1	7.0	7.2
COP	Heating *1	—	—	—	—	3.2	3.1	3.4	3.4
COP	Heating *2	—	—	—	—	2.2	2.4	2.3	2.3
INDOOR UNIT		PC24GK	PC30GK	PC36GK	PC42GK	PCH24GK	PCH30EK	PCH36GK	PCH42GK
External Finish		Munsell 0.70Y 8.59/0.97				Munsell 2.5Y 8/0.3 & N2		Munsell 0.70Y 8.59/0.97	
Power Supply	V, Phase, Hz	115,1,60	115,1,60	115,1,60	115,1,60	208/230,1,60	230,1,60	208/230,1,60	208/230,1,60
Max. Fuse Size	(Time Delay) Amp	15	15	15	15	20	25	25	25
Min. Ampacity	Amp	2.0	3.0	3.0	3.0	15	15	17	17
Fan Motor	F.L.A.	1.9	2.4	2.4	2.4	1.1	0.7	1.3	1.3
Auxiliary Heater	A (kW)	—	—	—	—	9.8/10.8(2.0/2.5)	10.8 (2.5)	10.8/12.0 (2.3/2.8)	10.8/12.0 (2.3/2.8)
Airflow Lo-Hi	Dry CFM	880-710	1240-990	1240-990	1240-990	880-710	740-920	1240-990	1240-990
Airflow Lo-Hi	Wet CFM	810-640	1130-880	1130-880	1130-880	810-640	670-830	1130-880	1130-880
Moisture Removal	Pints/h	4.6	5.2	7.4	10.6	4.6	9.1	6.3	10.3
Sound Pressure Level Lo-Hi	dB(A)	48-42	51-45	51-45	51-45	48-43	43-50	51-45	51-45
Cond. Drain Connection	O.D. Inches	1	1	1	1	1	1	1	1
Indoor Unit Width	Inches	51-9/16	63-3/4	63-3/4	63-3/4	51-9/16	50-7/16	63-3/4	63-3/4
Indoor Unit Depth	Inches	26-3/4	26-3/4	26-3/4	26-3/4	26-3/4	26-13/16	26-3/4	26-3/4
Indoor Unit Height	Inches	10-5/8	10-5/8	10-5/8	10-5/8	10-5/8	10-1/8	10-5/8	10-5/8
Weight	Pounds	82	95	99	99	87	101	106	106
OUTDOOR UNIT		PU24EK	PU30EK	PU36EK	PU42EK	PUH24EK	PUH30EK	PUH36EK	PUH42EK7
External Finish		Munsell 5Y 7/1							
Sound Pressure Level	dB(A)	55.0	55.0	55.0	56.0	55.0	55.0	55.0	56.0
Power Supply	V, Phase, Hz	208/230,1,60	208/230,1,60	208/230,1,60	208/230,1,60	208/230,1,60	208/230,1,60	208/230,1,60	208/230,1,60
Max. Fuse Size	(Time Delay) Amp	20.0	30.0	30.0	40.0	20.0	30.0	30.0	40.0
Min. Ampacity	Amp	16.0	20.0	22.0	27.0	16.0	20.0	22.0	27.0
Fan Motor	F.L.A.	0.65+0.65	0.65+0.65	0.75+0.75	0.8+0.8	0.65+0.65	0.75+0.75	0.75+0.75	0.8+0.8
Compressor	Model (Type)	NH33NBD	NH41NAD	NH47NAD	NH569NXA	NH33NBD	NH41NAD	NH47NAD	NH569NXA
Compressor	R.L.A.	11.5	14.0	17.5	20.0	11.5	14.0	17.5	20.0
Compressor	L.R.A.	54.0	73.0	87.0	105.0	54.0	73.0	87.0	105.0
Crankcase Heater	A(W)	.17(39)	.17(39)	.17(39)	.17(39)	.17(39)	.17(39)	.17(39)	.17(39)
Refrigerant Control		Capillary Tube							
Defrost Method		—	—	—	—	Reverse Cycle			
Outdoor Unit Width	Inches	34-1/4	34-1/4	38-3/16	38-3/16	34-1/4	38-3/16	38-3/16	38-3/16
Outdoor Unit Depth	Inches	11-5/8	11-5/8	13-9/16	13-9/16	11-5/8	13-9/16	13-9/16	13-9/16
Outdoor Unit Height	Inches	49-9/16	49-9/16	49-9/16	49-9/16	49-9/16	49-9/16	49-9/16	49-9/16
Weight	Pounds	207.0	208.0	220.0	260.0	202.0	245.0	246.0	268.0
Remote Controller		Hard-wired type, With Indoor Unit							
Control Voltage	(By Built-In Transformer)	DC12V	DC12V	DC12V	DC12V	DC12V	DC12V	DC12V	DC12V
Refrigerant Piping Size	(Liquid x Gas) Inches	3/8 x 5/8	1/2 x 3/4	1/2 x 3/4	1/2 x 3/4	3/8 x 5/8	1/2 x 3/4	1/2 x 3/4	1/2 x 7/8

\*1,\*2,\*3 See page 27 for rating conditions.

LIMITED WARRANTY | Six-year warranty on compressor. One-year warranty on parts.

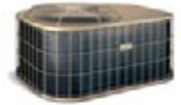
<sup>1</sup>°F low ambient operation possible on slim-line horizontal discharge outdoor units with optional wind baffle.

Specifications subject to change without notice.



SPECIFICATIONS WITH VERTICAL AIR DISCHARGE OUTDOOR UNIT

PCG/PCGH CEILING-SUSPENDED AIR CONDITIONERS AND HEAT PUMPS



SYSTEM		PCG24GK	PCG30GK	PCG36GK	PCG42GK	PCGH24GK	PCH30EK	PCGH36GK	PCGH42GK
Capacity	Cooling Btu/h *1	24,400	29,800	36,000	41,500	25,000	30,200	35,800	40,500
Capacity	Heating Btu/h *1,*3	—	—	—	—	24,200(32,700)	31,000(40,500)	36,200(45,700)	45,000(54,500)
Capacity	Heating Btu/h *2,*3	—	—	—	—	14,400(22,900)	17,400(26,900)	20,000(29,500)	28,400(37,900)
EER	*1	9.35	9.65	10.05	9.50	9.00	9.33	9.65	10.25
SEER		10.50	11.00	11.20	10.00	10.00	10.00	10.50	11.50
HSPF		—	—	—	—	7.35	7.6	7.4	7.8
COP	Heating *1	—	—	—	—	3.10	3.33	3.24	3.35
COP	Heating *2	—	—	—	—	2.40	2.25	2.28	2.46
<b>INDOOR UNIT</b>		<b>PC24GK</b>	<b>PC30GK</b>	<b>PC36GK</b>	<b>PC42GK</b>	<b>PCH24GK</b>	<b>PCH30EK</b>	<b>PCH36GK</b>	<b>PCH42GK</b>
External Finish		Munsell 0.70Y 8.59/0.97				Munsell 2.5Y 8.03/1.02		Munsell 0.70Y 8.59/0.97	
Power Supply	V, Phase, Hz	115,1,60	115,1,60	115,1,60	115,1,60	230,1,60	230,1,60	230,1,60	230,1,60
Max. Fuse Size	(Time Delay) Amp	15	15	15	15	20	25	25	25
Min. Ampacity	Amp	2	3	3	3	15	15	17	17
Fan Motor	F.L.A.	1.9	2.4	2.4	2.4	1.1	0.7	1.3	1.3
Auxiliary Heater	A (kW)	—	—	—	—	9.8/10.8 (2.0/2.5)	10.8 (2.5)	10.8/12.0 (2.3/2.8)	10.8/12.0 (2.3/2.8)
Airflow Lo-Hi	Dry CFM	880-710	1,240-990	1,240-990	1,240-990	880-710	740-920	1,240-990	1,240-990
Airflow Lo-Hi	Wet CFM	810-640	1,130-880	1,130-880	1,130-880	810-640	670-830	1,130-880	1,130-880
Moisture Removal	Pints/h	4.6	5.2	7.4	10.6	4.6	9.1	6.3	10.3
Sound Pressure Level Lo-Hi	dB(A)	48-42	51-45	51-45	51-45	48-43	43-50	51-45	51-45
Cond. Drain Connection	O.D. Inches	1	1	1	1	1	1	1	1
Indoor Unit Width	Inches	51-9/16	63-3/4	63-3/4	63-3/4	51-9/16	50-7/16	63-3/4	63-3/4
Indoor Unit Depth	Inches	26-3/4	26-3/4	26-3/4	26-3/4	26-3/4	26-13/16	26-3/4	26-3/4
Indoor Unit Height	Inches	10-5/8	10-5/8	10-5/8	10-5/8	10-5/8	10-1/8	10-5/8	10-5/8
Weight	Pounds	82	95	99	99	87	97	101	101
<b>OUTDOOR UNIT</b>		<b>PUG24AYB</b>	<b>PUG30AYB</b>	<b>PUG36AYB</b>	<b>PUG42AYB</b>	<b>PUGH24AYB</b>	<b>PUGH30AYB</b>	<b>PUGH36AYB</b>	<b>PUGH42AYB</b>
External Finish		Baked Polyester Powder Coating							
Sound Pressure	dB(A)	75	75	77	82	C/74, H/75	C/77, H/80	C/76, H/83	C/78, H/81
Max. Fuse Size	208/230V 1PH (Time Delay) Amp	25.0	30.0	35.0	45.0	25.0	30.0	35.0	40.0
Min. Ampacity	208/230V 1PH Amp	15.5	18.9	21.4	26.4	12.8	19.8	22.1	24.2
Fan Motor	208/230V 1PH F.L.A.	0.5	0.5	1.4	1.4	0.5	1.4	1.3	1.3
Compressor	208/230V 1PH R.L.A.	9.8	12.6	14.0	16.7	7.6 / 6.2	10.6 / 8.9	12.5 / 10.1	17.3 / 16.3
Compressor	208/230V 1PH L.R.A.	57	73	82	129	68	82	94	109
Compressor	208/230V 1PH F.L.A.	12.1	14.7	16.0	20.00	12.8	14.7	16.6	18.3
Unit Total	208/230V 1PH Unit Total F.L.A.	12.6	15.2	17.4	21.4	13.3	16.1	17.9	19.6
Crankcase Heater		Yes	Yes	Yes	Yes	Yes	Yes	Yes	Yes
Refrigerant Control		Metering orifice installed at the outdoor unit for cooling operation				Fixed orifice at outdoor unit for cooling Capillary tube installed at the indoor unit for heating operation			
Defrost Method		Reverse Cycle							
Outdoor Unit Width	Inches	35	35	35	35	35	35	35	37
Outdoor Unit Depth	Inches	23	23	23	23	23	23	23	27
Outdoor Unit Height	Inches	17	19	19	19	19	19	19	27
Weight	Pounds	192	192	192	192	171	189	209	230
Remote Controller		With Indoor Unit							
Control Voltage	(By Built-In Transformer)	DC12V	DC12V	DC12V	DC12V	DC12V	DC12V	DC12V	DC12V
Refrigerant Piping Size	(Liquid x Gas) Inches	3/8 x 5/8	1/2 x 3/4	1/2 x 3/4	1/2 x 3/4	3/8 x 5/8	1/2 x 3/4	1/2 x 3/4	1/2 x 7/8

\*1,\*2,\*3 See page 27 for rating conditions.

Operates in cooling mode to 50°F or to 25°F with optional low ambient kit.

LIMITED WARRANTY | Six-year warranty on compressor. One-year warranty on parts.

Specifications subject to change without notice.

## PL/PLH

CEILING-RECESSED SERIES



PL/PLH Indoor Unit  
12,000 to 42,000  
Btu/h Capacity

If there's at least a foot of space above your ceiling, the PL/PLH-Series is for you. These models combine powerful cooling and heating in an elegant cassette design that recesses into the ceiling. When installed, the attractive, flush-mounted grille is all you see. With its fresh air intake capability and four-way discharge airflow, the PL/PLH-Series gives you plenty of fresh, comfortable airflow options. There are even branch duct knockouts for either a round or a rectangular duct, allowing for the air-conditioning of a smaller adjacent space. All these features are found in a versatile, attractive design made to disappear discreetly into the ceiling.



Easy-to-maintain  
Long-life  
Filter

The washable filter provides about 2,500 hours of use in a normal office environment before cleaning is needed. Replacement is not necessary.

## Auto Cooling/Heating Changeover

PLH heat pump units will automatically switch back and forth from cooling to heating to compensate for temperature fluctuations in a room.

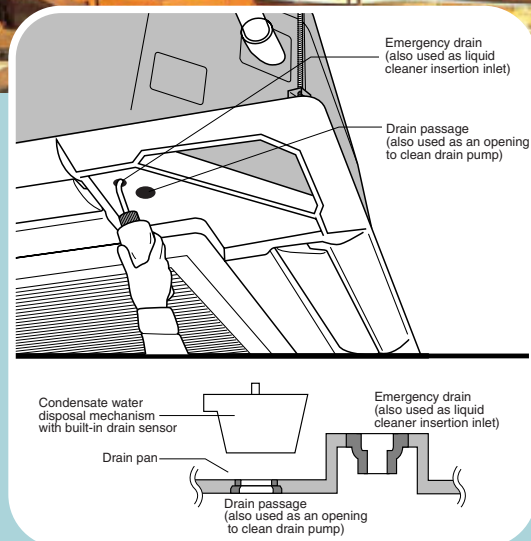
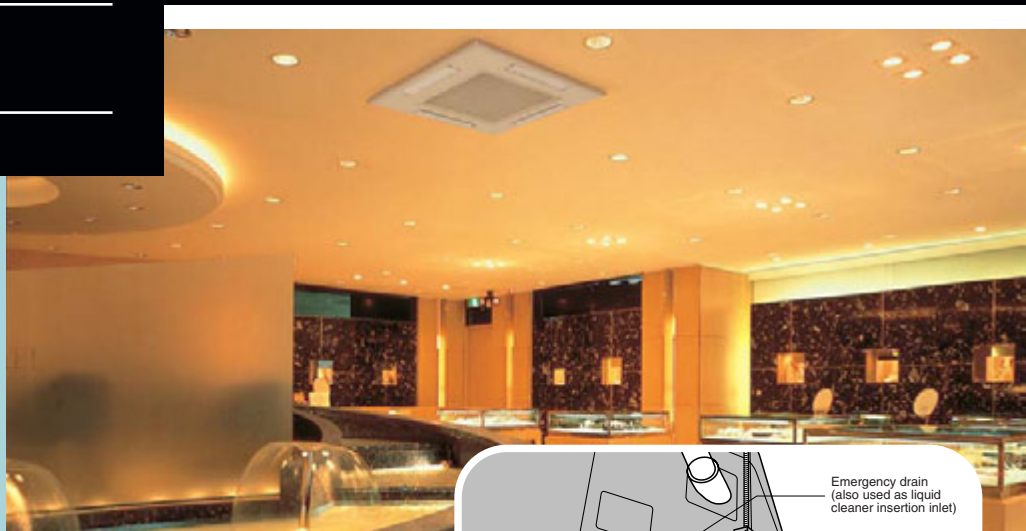
## Customize the Airflow Pattern to Meet Your Needs

The PL/PLH offers 2-, 3-, or 4-way outlet selection, enabling effective air-conditioning in places such as halls, showrooms, and shopping malls.\*

\* Optional air outlet shutter plate is necessary for 2- or 3-way airflow setting.

## Easy to Install

PL/PLH-AK units are about 40% lighter than previous models, making suspension work easier. The height can be adjusted through the corner pockets without removing the grille.



## Drain Lift for Condensate Water Disposal

A built-in high-performance drain pump means improved condensate water disposal. The pump lifts the water up to 33 inches above the unit to help simplify drain piping. A built-in drain sensor shuts off the indoor unit if a drain is clogged or if in the unlikely event that the pump malfunctions. This failproof system is the perfect solution for computer rooms or high-end conference rooms where condensation build-up is undesirable.





SPECIFICATIONS WITH HORIZONTAL AIR SLIM-LINE OUTDOOR UNIT

PL/PLH CEILING-RECESSED AIR CONDITIONERS AND HEAT PUMPS  
0°F LOW AMBIENT CAPABLE\*



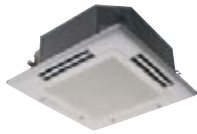
SYSTEM		PL12AK	PL18AK	PL24AK	PL30AK	PL36AK	PL42AK	PLH18AK	PLH24AK	PLH30AK	PLH36AK	PLH42AK
Capacity	Cooling Btu/h *1	12,500	18,400	24,000	31,000	36,500	42,500	18,000	24,000	30,000	35,400	42,000
Capacity	Heating Btu/h *1,*3	—	—	—	—	—	—	19,000 (24,500/25,500)	26,000 (31,500/32,500)	33,000 (39,500/41,200)	38,000 (45,900/47,600)	44,300 (52,200/53,900)
Capacity	Heating Btu/h *2,*3	—	—	—	—	—	—	11,000 (16,500/17,500)	16,500 (22,000/23,000)	18,500 (25,000/26,700)	23,000 (30,900/32,600)	26,800 (34,700/36,400)
Power Consumption	Cooling kW *1	1.26	1.85	2.65	3.17	3.64	4.08	1.75	2.57	3.17	3.63	3.98
Power Consumption	Heating kW *1,*3	—	—	—	—	—	—	1.59 (3.19/3.49)	2.51 (4.11/4.41)	3.04 (4.94/5.44)	3.45 (5.75/6.25)	3.82 (6.12/6.62)
Power Consumption	Heating kW *2,*3	—	—	—	—	—	—	1.32 (2.92/3.22)	2.15 (3.75/4.05)	2.55 (4.45/4.95)	2.93 (5.23/5.73)	3.24 (5.54/6.04)
EER	*1	9.9	9.9	9.1	9.8	10.0	10.4	10.3	9.3	9.5	9.8	10.6
SEER		10.1	10.2	10.0	10.6	10.5	10.8	10.5	10.3	10.4	10.0	10.7
HSPF		—	—	—	—	—	—	7.2	7.0	6.9	7.1	7.0
COP	Heating *1	—	—	—	—	—	—	3.5	3.0	3.2	3.2	3.4
COP	Heating *2	—	—	—	—	—	—	2.4	2.2	2.1	2.3	2.4
<b>INDOOR UNIT</b>		<b>PL12AK</b>	<b>PL18AK</b>	<b>PL24AK</b>	<b>PL30AK</b>	<b>PL36AK</b>	<b>PL42AK</b>	<b>PLH18AK</b>	<b>PLH24AK</b>	<b>PLH30AK</b>	<b>PLH36AK</b>	<b>PLH42AK</b>
External Finish		Galvanized Sheets With Gray Heat Insulation										
Power Supply	V, Phase, Hz	115,1,60	115,1,60	115,1,60	115,1,60	115,1,60	115,1,60	208/230,1,60	208/230,1,60	208/230,1,60	208/230,1,60	208/230,1,60
Max. Fuse Size	(Time Delay) Amp	15.0	15.0	15.0	15.0	15.0	15.0	20.0	20.0	25.0	25.0	25.0
Min. Ampacity	Amp	2.0	2.0	3.0	3.0	3.0	3.0	15.0	15.0	17.0	17.0	17.0
Fan Motor	F.L.A.	1.2	1.2	2.6	2.6	2.6	2.6	0.7	1.2	1.2	1.4	1.4
Auxiliary Heater	A (kW)	—	—	—	—	—	—	7.7-8.3(1.6-1.9)	7.7-8.3(1.6-1.9)	9.1-10.4(1.9-2.4)	11.1-12.2(2.3-2.8)	11.1-12.2(2.3-2.8)
Airflow Lo-Hi	Dry CFM	420-560	530-710	710-990	780-1,060	780-1,060	780-1,060	530-710	710-990	780-1,060	780-1,060	780-1,060
Airflow Lo-Hi	Wet CFM	390-530	490-670	670-950	740-1,020	740-1,020	740-1,020	490-670	670-950	740-1,020	740-1,020	740-1,020
Moisture Removal	Pints/h	3.8	5.3	7.2	9.6	11.1	12.6	5.3	7.0	9.1	10.9	12.3
Sound Pressure Level Lo-Hi	dB(A)	27-32	31-37	33-41	43-45	37-45	37-45	31-37	33-41	35-43	37-45	37-45
Cond. Drain Connection	O.D. Inches	1-1/4	1-1/4	1-1/4	1-1/4	1-1/4	1-1/4	1-1/4	1-1/4	1-1/4	1-1/4	1-1/4
Indoor Unit Width	Inches	33-1/16	33-1/16	33-1/16	33-1/16	33-1/16	33-1/16	33-1/16	33-1/16	33-1/16	33-1/16	33-1/16
Indoor Unit Depth	Inches	33-1/16	33-1/16	33-1/16	33-1/16	33-1/16	33-1/16	33-1/16	33-1/16	33-1/16	33-1/16	33-1/16
Indoor Unit Height	Inches	10-3/16	10-3/16	11-3/4	11-3/4	11-3/4	11-3/4	10-3/16	11-3/4	11-3/4	11-3/4	11-3/4
Weight	Pounds	49.0	53.0	66.0	66.0	71.0	71.0	57.0	71.0	71.0	75.0	75.0
Decorative Indoor Grille	External Finish	Munsell 0.7Y 8.59/0.97										
Decorative Indoor Grille Width	Inches	37-3/8	37-3/8	37-3/8	37-3/8	37-3/8	37-3/8	37-3/8	37-3/8	37-3/8	37-3/8	37-3/8
Decorative Indoor Grille Depth	Inches	37-3/8	37-3/8	37-3/8	37-3/8	37-3/8	37-3/8	37-3/8	37-3/8	37-3/8	37-3/8	37-3/8
Decorative Indoor Grille Height	Inches	1-3/16	1-3/16	1-3/16	1-3/16	1-3/16	1-3/16	1-3/16	1-3/16	1-3/16	1-3/16	1-3/16
Decorative Indoor Grille Weight	Pounds	11.0	11.0	11.0	11.0	11.0	11.0	11.0	11.0	11.0	11.0	11.0
<b>OUTDOOR UNIT†</b>		<b>PU12EK</b>	<b>PU18EK</b>	<b>PU24EK</b>	<b>PU30EK</b>	<b>PU36EK</b>	<b>PU42EK7</b>	<b>PUH18EK</b>	<b>PUH24EK</b>	<b>PUH30EK</b>	<b>PUH36EK</b>	<b>PUH42EK7</b>
External Finish		Munsell 5Y 7/1	Munsell 5Y 7/1	Munsell 5Y 7/1	Munsell 5Y 7/1	Munsell 5Y 7/1	Munsell 5Y 7/1	Munsell 5Y 7/1	Munsell 5Y 7/1	Munsell 5Y 7/1	Munsell 5Y 7/1	Munsell 5Y 7/1
Sound Pressure Level	dB(A)	50.0	53.0	55.0	55.0	55.0	56.0	53.0	55.0	55.0	55.0	56.0
Power Supply	V, Phase, Hz	208/230,1,60	208/230,1,60	208/230,1,60	208/230,1,60	208/230,1,60	208/230,1,60	208/230,1,60	208/230,1,60	208/230,1,60	208/230,1,60	208/230,1,60
Max. Fuse Size	(Time Delay) Amp	15.0	20.0	20.0	30.0	30.0	40.0	20.0	20.0	30.0	30.0	40.0
Min. Ampacity	Amp	11.0	16.0	16.0	20.0	22.0	28.0	16.0	16.0	20.0	22.0	27.0
Fan Motor	F.L.A.	0.65	0.75	0.65+0.65	0.65+0.65	0.75+0.75	0.8+0.8	0.75	0.65+0.65	0.75+0.75	0.75+0.75	0.8+0.8
Compressor	Model (Type)	RH167NAB	RH247NAB	NH33NBD	NH41NAD	NH47NAD	ZR42K3PFV	RH247NAB	NH33NBD	NH41NAD	NH47NAD	ZR42K3PFV
Compressor	R.L.A.	8.9	12.0	11.5	14.0	17.5	20.4	12.0	11.5	14.0	17.5	20.4
Compressor	L.R.A.	29.0	37.0	54.0	73.0	87.0	109.0	37.0	54.0	73.0	87.0	109.0
Crankcase Heater	A(W)	0.11/0.12(23/28)	0.11/0.12(23/28)	0.16/0.17(33/39)	0.16/0.17(33/39)	0.16/0.17(33/39)	0.16/0.17(33/39)	0.11/0.12(23/28)	0.16/0.17(33/39)	0.16/0.17(33/39)	0.16/0.17(33/39)	0.16/0.17(33/39)
Refrigerant Control		Capillary Tube										
Defrost Method		Reverse Cycle										
Outdoor Unit Width	Inches	34-1/4	34-1/4	34-1/4	34-1/4	38-3/16	38-3/16	34-1/4	34-1/4	38-3/16	38-3/16	38-3/16
Outdoor Unit Depth	Inches	11-5/8	11-5/8	11-5/8	11-5/8	13-9/16	13-9/16	11-5/8	11-5/8	13-9/16	13-9/16	13-9/16
Outdoor Unit Height	Inches	25-9/16	33-1/2	49-9/16	49-9/16	49-9/16	49-9/16	33-1/2	49-9/16	49-9/16	49-9/16	49-9/16
Weight	Pounds	105.0	154.0	207.0	208.0	220.0	260.0	131.0	202.0	245.0	246.0	268.0
Remote Controller		With Decorative Grille										
Control Voltage	(By Built-In Transformer)	12VDC	12VDC	12VDC	12VDC	12VDC	12VDC	12VDC	12VDC	12VDC	12VDC	12VDC
Refrigerant Piping Size	(Liquid x Gas) Inches	3/8 x 5/8	3/8 x 5/8	3/8 x 5/8	1/2 x 3/4	1/2 x 3/4	1/2 x 3/4	3/8 x 5/8	3/8 x 5/8	1/2 x 3/4	1/2 x 3/4	1/2 x 7/8

\*1,\*2,\*3 See page 27 for rating conditions.

LIMITED WARRANTY | Six-year warranty on compressor. One-year warranty on parts.

\*0°F low ambient operation possible on slim-line horizontal discharge outdoor units with optional wind baffle.

Specifications subject to change without notice.



**SPECIFICATIONS WITH VERTICAL AIR DISCHARGE OUTDOOR UNIT**  
**PLG/PLGH CEILING-RECESSED AIR CONDITIONERS AND HEAT PUMPS**



SYSTEM		PLG18AK	PLG24AK	PLG30AK	PLG36AK	PLG42AK	PLGH18AK	PLGH24AK	PLGH30AK	PLGH36AK	PLGH42AK
Capacity	Cooling Btu/h *1	20,000	24,000	28,400	35,600	40,000	19,200	24,400	27,800	35,200	40,000
Capacity	Heating Btu/h *1	—	—	—	—	—	19,200(25,700)	24,200(30,700)	30,200(38,400)	36,400(45,900)	45,000(54,500)
Capacity	Heating Btu/h *2	—	—	—	—	—	10,100(16,600)	14,400(20,900)	16,900(25,100)	20,200(29,700)	28,400(37,900)
EER	*1	10.5	9.0	9.3	9.9	9.25	10.0	8.9	8.9	9.5	11.6
SEER		11.4	10.0	10.3	11.0	10.0	10.8	10.0	10.0	10.0	11.0
HSPF		—	—	—	—	—	7.0	6.8	7.0	7.0	7.5
COP	Heating *1	—	—	—	—	—	3.6	3.0	3.2	3.2	3.2
COP	Heating *2	—	—	—	—	—	2.1	2.3	2.2	2.2	2.3
<b>INDOOR UNIT</b>		<b>PL18AK</b>	<b>PL24AK</b>	<b>PL30AK</b>	<b>PL36AK</b>	<b>PL42AK</b>	<b>PLH18AK</b>	<b>PLH24AK</b>	<b>PLH30AK</b>	<b>PLH36AK</b>	<b>PLH42AK</b>
External Finish		Galvanized Sheets With Gray Heat Insulation									
Power Supply	V, Phase, Hz	115.1,60	115.1,60	115.1,60	115.1,60	115.1,60	208/230,1.60	208/230,1.60	208/230,1.60	208/230,1.60	208/230,1.60
Max. Fuse Size	(Time Delay) A	15.0	15.0	15.0	15.0	15.0	20.0	20.0	25.0	25.0	25.0
Min. Ampacity		2.0	3.0	3.0	3.0	3.0	15.0	15.0	17.0	17.0	17.0
Fan Motor	F.L.A.	1.2	2.6	2.6	2.6	2.6	0.7	1.2	1.2	1.4	1.4
Auxiliary Heater	A (kW)	—	—	—	—	—	7.7-8.3(16-19)	7.7-8.3(16-19)	9.1-10.4(19-24)	11.1-12.2(23-28)	11.1-12.2(23-28)
Airflow Lo-Hi	Dry CFM	530-710	710-990	780-1,060	780-1,060	780-1,060	530-710	710-990	780-1,060	780-1,060	780-1,060
Airflow Lo-Hi	Wet CFM	490-670	670-950	740-1,020	740-1,020	740-1,020	490-670	670-950	740-1,020	740-1,020	740-1,020
Moisture Removal	Pints/h	5.3	7.2	9.6	11.1	12.6	5.3	7.0	9.1	10.9	12.3
Sound Pressure Level Lo-Hi	dB(A)	31-37	33-41	43-45	37-45	37-45	31-37	33-41	35-43	37-45	37-45
Cond. Drain Connection	O.D. Inches	1-1/4	1-1/4	1-1/4	1-1/4	1-1/4	1-1/4	1-1/4	1-1/4	1-1/4	1-1/4
Indoor Unit Width	Inches	33-1/16	33-1/16	33-1/16	33-1/16	33-1/16	33-1/16	33-1/16	33-1/16	33-1/16	33-1/16
Indoor Unit Depth	Inches	33-1/16	33-1/16	33-1/16	33-1/16	33-1/16	33-1/16	33-1/16	33-1/16	33-1/16	33-1/16
Indoor Unit Height	Inches	10-3/16	11-3/4	11-3/4	11-3/4	11-3/4	10-3/16	11-3/4	11-3/4	11-3/4	11-3/4
Weight	Pounds	53.0	66.0	66.0	71.0	71.0	57.0	71.0	71.0	75.0	75.0
Decorative Indoor Grille	External Finish	Munsell 0.7Y 8.59/0.97									
Decorative Indoor Grille Width	Inches	37-3/8	37-3/8	37-3/8	37-3/8	37-3/8	37-3/8	37-3/8	37-3/8	37-3/8	37-3/8
Decorative Indoor Grille Depth	Inches	37-3/8	37-3/8	37-3/8	37-3/8	37-3/8	37-3/8	37-3/8	37-3/8	37-3/8	37-3/8
Decorative Indoor Grille Height	Inches	1-3/16	1-3/16	1-3/16	1-3/16	1-3/16	1-3/16	1-3/16	1-3/16	1-3/16	1-3/16
Decorative Indoor Grille Weight	Pounds	11.0	11.0	11.0	11.0	11.0	11.0	11.0	11.0	11.0	11.0
<b>OUTDOOR UNIT<sup>1</sup></b>		<b>PUG18AYB</b>	<b>PUG24AYB</b>	<b>PUG30AYB</b>	<b>PUG36AYB</b>	<b>PUG42AYB</b>	<b>PUGH18AYB</b>	<b>PUGH24AYB</b>	<b>PUGH30AYB</b>	<b>PUGH36AYB</b>	<b>PUGH42AYB</b>
External Finish		Baked Polyester Powder Coating									
Sound Pressure	dB(A)	74	75	75	77	82	C/72, H/76	C/74, H/75	C/77, H/80	C/76, H/83	C/78, H/81
Max. Fuse Size 208/230V 1PH	(Time Delay) A	20	25	30	35	45	20	25	30	35	40
Min. Ampacity 208/230V 1PH		12.5	12.8	19.8	22.1	24.2	12.5	12.8	19.8	22.1	24.2
Fan Motor 208/230V 1PH	F.L.A.	0.5	0.5	1.4	1.3	1.3	0.5	0.5	1.4	1.3	1.3
Compressor 208/230V 1PH	R.L.A.	7.3	9.6	12.6	14.0	16.4	7.6 / 6.2	10.6 / 8.9	12.5 / 10.1	17.3 / 16.3	12.3 / 16.3
Compressor 208/230V 1PH	L.R.A.	45	68	82	94	109	45	68	82	94	109
Compressor 208/230V 1PH	F.L.A.	9.6	12.8	14.7	16.6	18.3	9.6	12.8	14.7	16.6	18.3
Unit Total 208/230V 1PH	Unit Total F.L.A.	10.1	13.3	16.1	17.9	19.6	10.1	13.3	16.1	17.9	19.6
Crankcase Heater		Yes	Yes	Yes	Yes	Yes	Yes	Yes	Yes	Yes	Yes
Refrigerant Control		Metering orifice installed at the outdoor unit for cooling operation					Fixed orifice at outdoor unit for cooling Capillary tube installed at the indoor unit for heating operation				
Defrost Method		Reverse Cycle									
Outdoor Unit Width	Inches	35	35	35	35	37	35	35	35	37	37
Outdoor Unit Depth	Inches	23	23	23	23	27	23	23	23	23	27
Outdoor Unit Height	Inches	17	17	19	19	27	19	19	25	27	33
Weight	Pounds	192	192	192	192	192	171	171	189	209	230
Remote Controller		With Decorative Grille									
Control Voltage	(By Built-In Transformer)	DC12V	DC12V	DC12V	DC12V	DC12V	DC12V	DC12V	DC12V	DC12V	DC12V
Refrigerant Piping Size	(Liquid x Gas) Inches	3/8 x 5/8	3/8 x 5/8	1/2 x 3/4	1/2 x 3/4	1/2 x 3/4	3/8 x 5/8	3/8 x 5/8	1/2 x 3/4	1/2 x 3/4	1/2 x 7/8

\*1,\*2,\*3 See page 27 for rating conditions.

LIMITED WARRANTY | Six-year warranty on compressor. One-year warranty on parts.

Operates in cooling mode to 50° F or to 25° F with optional low ambient kit.

Specifications subject to change without notice.

GENERAL SPECIFICATIONS

MS/MSH, MSZ, MSM, MXZ RATING CONDITIONS

MODEL		INDOOR AIR INTAKE TEMPERATURE	OUTDOOR AIR INTAKE TEMPERATURE
COOLING	Maximum	95°F DB, 71°F WB	115°F DB
	Minimum	67°F DB, 57°F WB	67°F DB
HEATING	Maximum	80°F DB, 67°F WB	75°F DB, 65°F WB
	Minimum	70°F DB, 60°F WB	17°F DB, 15°F WB

Notes: For MS/MSH, MSZ, MSM, MXZ

- \*1. Rating conditions (cooling) – Indoor: 80°F DB, 67°F WB Outdoor: 95°F DB, 75°F WB  
Rating conditions (heating) – Indoor: 70°F DB, 60°F WB Outdoor: 47°F DB, 43°F WB
- \*2. Rating conditions (heating) – Indoor: 70°F DB, 60°F WB Outdoor: 17°F DB, 15°F WB
- \*3. Heating capacity including auxiliary electric heater operation at 115V shown in ( ).

GENERAL SPECIFICATIONS

PK/PKH, PC/PCH, PL/PLH RATING CONDITIONS

MODEL		INDOOR AIR INTAKE TEMPERATURE	OUTDOOR AIR INTAKE TEMPERATURE
COOLING	Maximum	95°F DB, 71°F WB	115°F DB
	Minimum	67°F DB, 57°F WB	23°F DB or 0°F DB PU (when wind baffle installed) (PUG 25°F with optional LA kit)
HEATING	Maximum	80°F DB, 67°F WB	75°F DB, 65°F DB
	Minimum	70°F DB, 60°F WB	17°F DB, 15°F DB

Notes: For PK/PKH, PC/PCH, PL/PLH

- \*1. Rating conditions (cooling) – Indoor: 80°F DB, 67°F WB Outdoor: 95°F DB, 75°F WB  
Rating conditions (heating) – Indoor: 70°F DB, 60°F WB Outdoor: 47°F DB, 43°F WB
- \*2. Rating conditions (heating) – Indoor: 70°F DB, 60°F WB Outdoor: 17°F DB, 15°F WB
- \*3. Heating capacity and power consumption in ( ) include auxiliary electric heater operation at 208/230V.

OPTIONAL ACCESSORIES

PART NUMBER	USE WITH	DESCRIPTION
CWMB1	MU and PU outdoor units	condensing unit wall mounting brackets (painted steel)
CWMBSS	MU and PU outdoor units	condensing unit wall mounting brackets (304 stainless steel)
SH1730-115	P series A/C	mini condensation pump - 115V (painted steel)
SH1730-230	P series H/P	mini condensation pump - 230V (painted steel)
SI3100-115	M series	mini condensation pump - 115V (painted steel)
SI3100-230	M series	mini condensation pump - 230V (painted steel)
ICM326HM	M series (except MXZ)	low ambient head pressure controller
ICM379M	MSM18/30	extra coil sensor needed for MUM18/30
LLCP1	P-models with wired controller	2-system lead/lag controller
MAC-1000FT	MS/MSH09NW only	enhanced air cleaning filter (1)
MAC-101HRC	MSH series	simple remote controller - H/P
MAC-102CRC	M series	simple remote controller - A/C
MAC-454JP	MXZ & MS/MSH12 combinations	joint piping accessory
MAC-455JP	MXZ & 3 MS/MSH09 combinations	joint piping accessory
MAC-456JP	MXZ & MS/MSH09 & 15 combinations MXZ & MS/MSH09 & 17 combinations	joint piping accessory
MAC-1100FT	MS/MSH12/15/17TN	enhanced air cleaning filter (1)
MAC-1300FT	MS/MSH09TW	enhanced air cleaning filter (1)
MAC-1500DF	MS/MSH09NW only	deodorizing filter (1)
MAC-1600DF	MS/MSH12/15/17TN	deodorizing filter (1)
MAC-1800DF	MS/MSH09TW	deodorizing filter (1)
PAC-715AD	EK & FK models	timer adapter for programmable timer
PAC-725AD	EK, FK, AK, GK models	multiple remote controller adapter & duct fan controller
PAC-YT34PTA	FK, AK, GK models	7-day programmable timer
PAC-SG01KF	PL-AK models	high efficiency filter: requires multi-function casement (PAC-SG03TM-E)
PAC-SG03TM-E	PL-AK models	multi-function casement for high efficiency filter and for one additional fresh air intake
PAC-SG06SP-E	PL-AK models	air outlet shutter plate
PAC-SK65PT	EK models with original controllers	7-day programmable timer
PAR-SW96A-E	PL/PLH-AK models	wireless remote controller kit: receiver and wireless remote
PCH364201	PC/PCH36/42EK	permanent filter kit: includes (1) filter set and hardware
PCH364202	PC/PCH36/42EK	permanent replacement filters (2)
PCH364203	PC/PCH36/42EK	disposable filter kit: includes (1) filter set and hardware
PCH364204	PC/PCH36/42EK	disposable replacement filter media: polyester, 12-pack or 24 pieces
PCH364205	PC/PCH36/42EK	hardware only: frame and accessories (no filters)
PCH364206	PC/PCH36/42EK	Odorstat replacement media sets (2): packed 24 per box or 48 pieces
RCH-D	MS/MSH-N and PK-FL models	lockdown bracket for remote controller
RCMKP1CB	MS/MSH-T and PKH-FL models	lockdown bracket for remote controller
TC	PUG/PUGH outdoor units	corrosive resistant coating Please add 7C suffix to outdoor model number when ordering
ULTRILITE1	All outdoor units that fit	condensing unit mounting pad (in.): 16x36x3
ULTRILITE2	All outdoor units that fit	condensing unit mounting pad (in.): 24x24x3
ULTRILITE3	PUG and PUGH outdoor units	condensing unit mounting pad (in.): 36x36x3
WB-PEK	PU12EK, PU18EK	low ambient wind baffle
WB-PEK2	PU24/30/36/42EK	low ambient wind baffle

\* Btu/h performance rated at ARI conditions. Specifications and prices are subject to change without notice. See price guide for accessory pricing.

GENERAL SPECIFICATIONS

REFRIGERANT TUBING SIZE FLARE/FLARE

MODEL	OUTDOOR UNIT	MAX. HEIGHT DIFFERENCE (FT.)	MAX. TUBING LENGTH (FT.)
MS09TW, MSH09TW, MSZ09UN	MU/MUH/MUZ	25	49
MF12EN, MF15EN	MU	25	49
MS12TN, MSH12TN, MSH12EN, MS15TN, MSH15TN, MSH15EN, MS17TN, MSH17TN	MU/MUH	25	49
PK12FK, PL12AK, PK18[FK,FL], PL18AK, PLH18AK, PKH18[FK,FL]	PU/PUH	130	130
PKG18[FK,FL], PKG18[FK,FL], PLG18AK, PLGH18AK, PKGH18[FK,FL]	PUG/PUGH/AYB	50	75
PK24[FK,FL], PKH24[FK,FL], PC24GK, PCH24GK, PL24AK, PLH24AK	PU/PUH	164	164
PKG24[FK,FL], PKGH24[FK,FL], PCG24GK, POGH24GK, PLG24AK, PLGH24AK	PUG/PUGH/AYB	50	75
PK30[FK,FL], PKH30[FK,FL], PL30AK, PLH30AK, PC30GK, PCH30GK, PK36FK, PK36[FK,FL], PKH36[FK,FL], PL36AK, PLH36AK, PC36GK, PCH36GK, PL42AK, PLH42AK	PU/PUH	164	164
PKG30[FK,FL], PKGH30[FK,FL], PLG30AK, PLGH30AK, PCG30GK, POGH30GK, PKG36[FK,FL], PKGH36[FK,FL], PLG36AK, PLGH36AK, PCG36GK, POGH36GK, PLG42AK, PLGH42AK	PUG/PUGH/AYB	50	75
PLH42AK, PCH42GK	PU/PUH	164	164
PLGH42AK, PCGH42GK	PUG/PUGH/AYB	50	75
MXZ30TN Total refrigerant tubing length of any combination of indoor units cannot exceed 197 feet.	MXZ30	33	82

REFRIGERANT TUBING SETS

Use With	Length (Ft.)	Coupling	Order No.	Tubing Size
All P Models 12,000-24,000 BTU	16	Flare/Flare	PACSK05FS	3/8-5/8
	22	Flare/Flare	PACSK07FS	3/8-5/8
	32	Flare/Flare	PACSK10FS	3/8-5/8
	49	Flare/Flare	PACSK15FS	3/8-5/8
All P Models 30,000-42,000 BTU (Except PLH42FK(AK) and PCH42EK)	16	Flare/Flare	PACSK05FF	1/2-3/4
	22	Flare/Flare	PACSK07FF	1/2-3/4
	32	Flare/Flare	PACSK10FF	1/2-3/4
	49	Flare/Flare	PACSK15FF	1/2-3/4
PLH42AK PCH42EK	22	Flare/Flare	PACSK07FK	1/2-7/8
	49	Flare/Flare	PACSK15FK	1/2-7/8
MS09TW MSH09TW	10	Flare/Flare	MAC645PI	1/4-3/8
	16	Flare/Flare	MAC646PI	1/4-3/8
	23	Flare/Flare	MAC647PI	1/4-3/8
	33	Flare/Flare	MAC648PI	1/4-3/8
MS12TN MSH12TN	49	Flare/Flare	MAC649PI	1/4-3/8
	10	Flare/Flare	MAC660PI	1/4-1/2
	16	Flare/Flare	MAC661PI	1/4-1/2
	23	Flare/Flare	MAC662PI	1/4-1/2
MF12EN2 MF15EN2 MS15TN MSH15TN MS17TN MSH17TN	33	Flare/Flare	MAC663PI	1/4-1/2
	49	Flare/Flare	MAC664PI	1/4-1/2
	10	Flare/Flare	MAC725PI	1/4-5/8
	16	Flare/Flare	MAC726PI	1/4-5/8
MXZ30TN	23	Flare/Flare	MAC727PI	1/4-5/8
	33	Flare/Flare	MAC728PI	1/4-5/8
Joint Pipe	49	Flare/Flare	MAC729PI	1/4-5/8
	Joint Pipe	Flare/Flare	MAC454JP	3/8-1/2
	Joint Pipe	Flare/Flare	MAC455JP	1/2-3/8
Joint Pipe	Flare/Flare	MAC456JP	1/2-5/8	

\* M Series Tubing Sets Include insulated copper pipes, 1 roll of tape, putty, straps including screws, refrigerant oil, and a flange.  
\* P Series Tubing Sets Include insulated copper pipes, 2 rolls of tape (adhesive & non-adhesive), putty, sleeve, flange, 2 connecting wires (1 indoor unit to controller, 1 indoor unit to outdoor unit).

DiamondBack™ basic line-sets are available.

LIMITED WARRANTY | Six-year warranty on compressor.  
One-year warranty on parts.

LINE-HIDE™ LINESET COVER SYSTEM

- Available in four sizes - 2-1/4", 3", 4" and 6" tubes
- Snap-On covers and a full selection of couplings, elbows, T-joints, caps, and more for any application, complex or simple
- High-quality PVC with UV inhibitors for outdoor service in all weather conditions



**Mr. SLIM<sup>®</sup>**  
*Provides personalized comfort control for every room.*



Mitsubishi Electric Shizuoka Works acquired ISO 9001 certification under Series 9000 of the International Standard Organization (ISO), based on a review of Quality warranties for the production of air conditioning equipment. The plant also acquired environmental management system standard ISO 14001 certification.



**MITSUBISHI ELECTRIC**  
 HVAC Advanced Products Division

Mitsubishi Electric & Electronics USA, Inc.  
 Call Toll Free: 800-433-4822  
 Fax Toll Free: 800-889-9904

©2005 Mitsubishi Electric and Electronics USA, Inc. Mr Slim is a registered Trademark of Mitsubishi Electric. The three-diamond logo is a registered logo of Mitsubishi Electric Corporation.

See complete warranty for terms, conditions, and limitations. A copy is available from Mitsubishi Electric.

Form No. MBROGEN03-05-50M

For more information visit [mrslim.com](http://mrslim.com)