

PX1

PORTABLE ELECTRONIC VAPORIZER
User Guide
English




wizvape

Congratulations on purchasing the Wizvape PX1 Portable Electronic Vaporizer. The PX1 is equipped with Wizvape's StirHeat™ mixing system and a host of features, such as variable temperature setting, long battery duration and removable components for ease in maintenance.

Please read this guide carefully to ensure safe and reliable usage. Keep it in hand for future reference. If you have further questions, please visit our customer support area at www.wizvape.com.

Wizvape PX1 is covered by one or more patents pending in the USA, Canada, and elsewhere.

Wizvape, the Wizvape logo, Wizvape PX1, StirHeat and the StirHeat log are trademarks of Aura Medical Inc. © 2013 Aura Medical Inc. All rights reserved.

1 Table of Contents

2	Important Safety and Handling Information
5	Disclaimer
6	What's in the box?
7	Identifying the controls
10	Charging the Battery
	Checking the Battery Level
12	Filling the Crucible
13	Selecting the Temperature
14	Activating the Heater
	Heater Button Function
15	Vaporizing with StirHeat™
16	Cleaning
	Remove the Filter Cap
	Remove the Ceramic Filter
	Cleaning the Parts
19	Warranty Info

Important Safety and Handling Information

⚠ WARNING Read all safety information below and operating instructions before using to avoid injury. Failure to follow these instructions could result in fire, electric shock, bodily injury or damage to your Wizvape PX1 Vaporizer.

Keep out of reach of children. Under no circumstances should the PX1 be handled by children. The device contains small parts and may be a choking hazard. Touching the crucible or heater element will cause severe burns. Treat the PX1 as you would with matches or lighters.

Fire hazard. The heater element in the PX1 is capable of reaching temperatures in excess of 900°C (1652°F) and can instantly combust flammable materials. NEVER turn the power on without the crucible, cap and cover secured to the device. Do not use the PX1 near any objects that can catch fire, such as on your bed, or place it on fabric or carpet.

Vaporizing media. The PX1 is designed to vaporize dry herbs, pipe tobacco, or solid / thick gel concentrates. Do not use with oils or liquids. If the content is fluid enough to flow when Wizvape is tilted, turn the power off immediately and clean off the content. Any fluid seeping onto the heater element may catch on fire, or damage the electronics.

Avoid water and wet locations. Do not use the PX1 in rain or wet locations. Take care not to spill any food or liquid on the PX1. In case the device gets wet, turn off the power and unplug the cable before cleaning and allow it to dry completely before turning on again. Only the removable crucible, cover and filter cap can be washed, and only when they are removed from the device. A PX1 that has been damaged as a result of exposure to liquid is not serviceable, and will void the warranty.

Fragile parts. The crucible and filter (on the filter cap) is made of glass and ceramic. They could break if the PX1 is dropped or receives substantial impact. If the crucible or filter chips or cracks, stop using the PX1 until they are replaced with original manufacturer's replacement parts.

Repair or modification. Do not attempt to dismantle, readjust or repair. Disassembling the PX1 will invalidate the warranty. The PX1 is not user-serviceable, apart from those accessories such as the mouth piece, cover, crucible and filter cap.

Operating and storage temperature. Operate the PX1 in a place where the temperature is between 0°C and 35°C (32°F and 95°F). Store in a place where the temperature is between -20°C and 45°C (-4°F and 113°F). Avoid prolonged exposure to the sun, or leave the PX1 in the car, because temperatures in a parked car can exceed this range.

Carrying and handling. Do not drop your PX1. Do not puncture or incinerate. Do not leave the power on without the crucible, cap and filter cover secured to the device. Do not use if the PX1 is damaged. Ensure power is turned off and allow the device to cool before removing the crucible, or placing into a case or pocket.

Where and when not to use. Vapor from certain herbs or concentrates may cause dizziness and impair your ability to drive or operate a machinery. Do not use the PX1 in a car or work environment, even if you are not driving or operating the machinery. Vapors emitted from the PX1 may affect others around you. Vaporizing with the PX1 does not circumnavigate laws that prohibit smoking in public areas. Do not use the PX1 where smoking is prohibited.

WARNING

Battery leakage. The Wizvape PX1 contains a rechargeable lithium ion battery pack. Leakage of ingredients contained with the battery pack, or the combustion products of the ingredients, can cause personal injury as well as damage to your Wizvape PX1. If battery leakage occurs, avoid contact with skin. If contact occurs, immediately wash thoroughly with soap and water. If liquid leaking from the battery comes into contact with your eyes, immediately flush thoroughly with water and see a doctor. To avoid battery leakage, do not expose the PX1 to excessive physical shock, vibration, or liquids. Do not disassemble, attempt to repair or dispose of the PX1 in a fire.

Disclaimer

This product does not contain tobacco or any other plant material.

Wizvape vaporizers are intended for legal use only. Wizvape makes no claims about any health risks associated with smoking or vaporizing. Vaporizing may not remove all health risks associated with smoking. If you are unsure about any health risks associated with smoking or vaporizing, please consult your doctor. Vaporize at your own risk.

Wizvape PX1 is not a medical device and is not intended to diagnose, treat, mitigate, cure or prevent any ailment, disease or other conditions.

Wizvape PX1 is not intended to administer medicinal or illegal products of any kind and is not intended for use with any substance that may affect the structure or any function of the body.

If you have any health problem consult your doctor or pharmacist before using. The Wizvape system is not designed, nor intended for use with any material that is not lawful, allergenic or poisonous or may cause harm.

Wizvape PX1 is not a smoking cessation device.

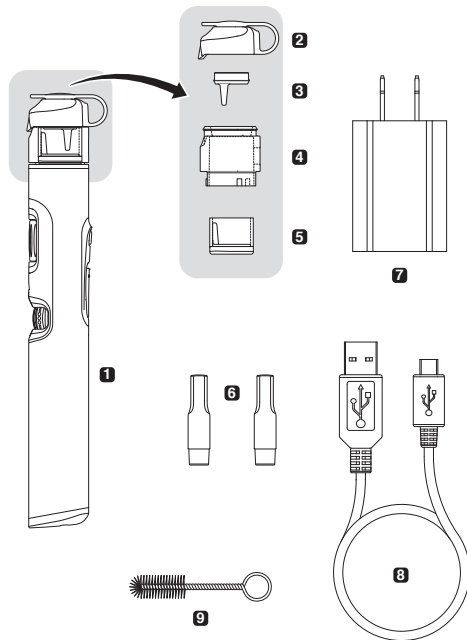
The lawful and proper use of this device is a condition of sale. Any improper use of the Wizvape vaporizer voids the warranty. Any illegal use of this device could subject the user to severe fines, penalties and/or imprisonment under the laws of your jurisdiction.

Wizvape is intended to be used solely with plant material and pipe tobacco, in their dried form or as solid or gel concentrates. Wizvape produces vapors by heating the plant material up to 260°C (500°F). Such botanical materials can be purchased in pharmacies and licensed sellers.

All comments and testimonials presented in any form, by customers are not and do not represent the opinions of the manufacturer.

Wizvape PX1 and all statements have not be evaluated by the FDA (US Food and Drug Administration) or by any comparable agency or administration in any other jurisdiction.

What's in the Box?

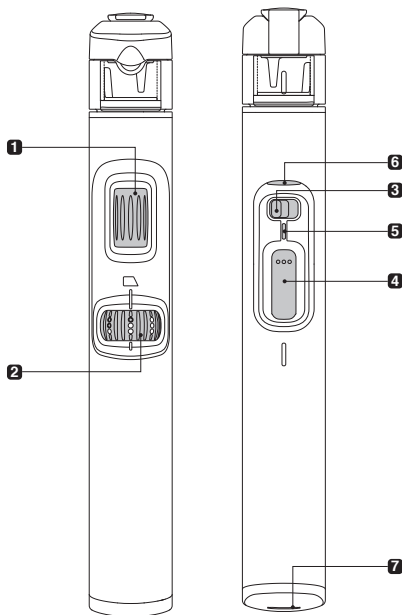


Make sure all the following items are supplied.

Some accessories **2** to **5** can be removed for cleaning. Please read section on cleaning before attempting to remove them.

- 1** PX1 Main Body
- 2** Filter Cap
- 3** Ceramic Filter
- 4** Cover
- 5** Glass-Ceramic Crucible
- 6** Mouthpiece (2 pieces)
- 7** Power Adapter
- 8** USB Charging Cable
- 9** Cleaning Brush

Identifying the Controls



1 StirHeat™ Wheel

Rotating the wheel drives a corresponding rotation of the crucible. The opposing motion of the ceramic stems within the crucible creates a dynamic stirring action to mix the contents, thereby distributing heat evenly.

2 Temperature Dial

Sets the heater temperature between 110°C to 260°C (230°F to 500°F).

3 Power Switch

Turns the PX1 on or off.

4 Heater Button

Activates the heater when depressed. Dual-function allows for a 60-seconds heat cycle (press and let go), or continuous heat (press and hold).

5 Heater Status LED

LED shows Red or Blue to indicate when the heater is activated or on standby.

6 Battery Level LED

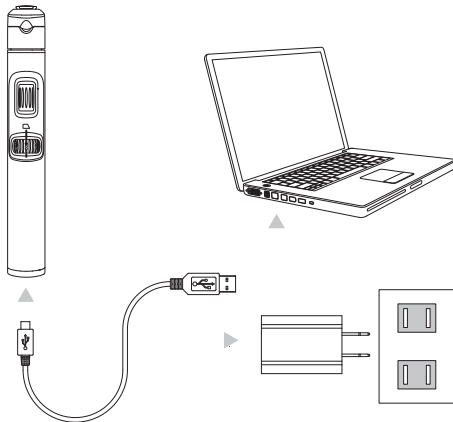
LED show the battery level in Green, Yellow or Red.

7 USB Charging Port

PX1's lithium-ion battery is charged via a USB cable that can be connected to the supplied Power Adapter or through any USB output port.

Charging the Battery

! Be sure to charge the battery fully before using it for the first time or when it has not been used in the last 6 months.



Connect one end of the supplied USB cable to PX1, and the other end to the Power Adapter. The Power Adapter is rated 110-240 VAC from a wall outlet. You can also charge via the USB port on your computer.

! WARNING

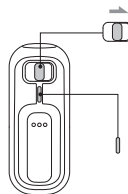
Use only the supplied Power Adapter. Do not use other power adapters which may damage the battery.

Battery recharge time is approximately 3 hours, depending on the remaining charge. Charging through a computer's USB port will take longer than using the supplied Power Adapter.

When fully charged, the battery will last for about 50 heat cycles (60 seconds each) on the highest temperature setting, and 100 or more cycles on the lowest temperature setting. Maximum temperatures are best generated when the battery is fully charged.

The battery can be recharged approximately 500 times, but performance may decrease after repeated recharges. Under normal operations, the battery can be recharged up to 70% of its rated capacity at the end of the warranty period.

Checking the Battery Level

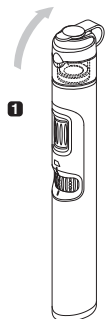


1. Slide the Power Switch to ON. The Battery Level LED will light up. Switching the power off will not stop the charging. It is recommended that you leave the power off until you need to check the battery level.
2. The Battery Level LED will show green, yellow or red. See below chart for charge level corresponding to the LED color.



The Battery Level LED will stay lit until the heater is activated. It will light up again 5 minutes after the last heat activation, or when the power is turned OFF and ON again.

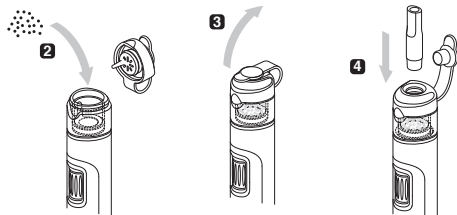
Filing the Crucible



1. **Make sure the Power is OFF.** Remove the Filter Cap by gently peeling it off the Cover.
2. Carefully measure and add a small, loose amount of herb, pipe tobacco, or solid/gel concentrate into the glass/ceramic crucible. Use a dabber for concentrates.

Recommended amount for herb or pipe tobacco is 1.5cc (1/3 teaspoon). Do not overpack or fill past the Crucible glass rim.

3. Close the Filter Cap and pull open the stopper.
4. Insert a Mouthpiece into the Filter Cap.

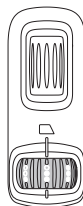


⚠ WARNING

Use only dry herbs, pipe tobacco, and solid or gel concentrates. If using oils or liquids, add a cotton or wool sponge to soak up the fluid. Even a small amount of fluid seeping over the crucible may flow onto the heating element and combust, causing serious injury and damage to your vaporizer.

Selecting the Temperature

The PX1's Temperature Dial controls the amount of heat generated to vaporize the contents in the crucible. Please consult with your doctor, pharmacist or herb supplier for the appropriate vaporization temperature of the herb, tobacco or concentrate used. See below chart for the range of temperature achieved at each dial marking.



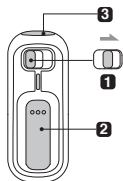
MARKING	TEMPERATURE
○○○	110°C - 130°C (230°F - 266°F)
●○○	140°C - 160°C (284°F - 320°F)
●●○	170°C - 190°C (338°F - 374°F)
●●●	200°C - 220°C (392°F - 428°F)
MAX	240°C - 260°C (464°F - 500°F)

Please note these are only approximate values that can be reached by the contents in the crucible. Factors such as the amount of herb or tobacco used, the blend, level of dryness, or duration of usage will affect the actual temperature reached. If you are unsure about the temperature to set, start with the lowest setting. Slowly increase the temperature at each heat cycle until you are satisfied with the amount of vapor produced.

⚠ WARNING

Never set the temperature beyond the vaporization temperature recommended by your doctor or pharmacist. Setting a higher than necessary temperature may combust the content in the crucible, causing injury and damaging your vaporizer.

Activating the Heater



1. Slide the Power Switch to ON. The battery level LED will light up. See section on battery charging for explanation of the LED colors.
2. After making sure the appropriate temperature is selected, depress the Heater Button to activate a 60-seconds cycle.
3. When the heater cycle is activated, the Heater Status LED will light up -
Red: 60-seconds cycle in progress.
Blue: Heat cycle is completed, heater on standby.

Heater Button Function

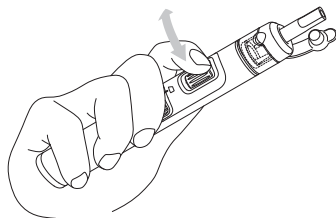
Press & Let go	The heater will be activated for 60-seconds.
Press & Hold during heating	The heater will run continuously. Letting go of the button will restart a 60-seconds cycle.

Depressing the Heater Button anytime during the heat cycle will restart the 60-second cycle.

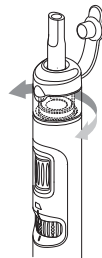
⚠ WARNING

Do not press and hold the Heater Button for more than **2 minutes**, or re-activate the 60s cycle for more than **3 times continuously** without letting the PX1 cool down. The heater element in PX1 will reach 900°C (1,652°F) or more. Even with the ceramic insulation, heat will eventually be transferred to other parts of the PX1, causing damage to the electronics, fire, or bodily injury. If you notice any melting, smoke or burning smell emitting from the PX1, turn off the power immediately and place the PX1 outdoors and away from any flammable material.

Vaporizing with StirHeat™



Using your index finger, rotate the Stirring Wheel to spin the Crucible. The ceramic stems within the Crucible will agitate the herb or pipe tobacco when rotated. This action helps mix the content so heat is evenly distributed throughout.



Inhale a small amount of vapor via the Mouthpiece. For best results, draw in the vapor after the first or second heat cycle to ensure that the content has reached appropriate temperatures. When combined with stirring, heat will be better distributed throughout the Crucible.

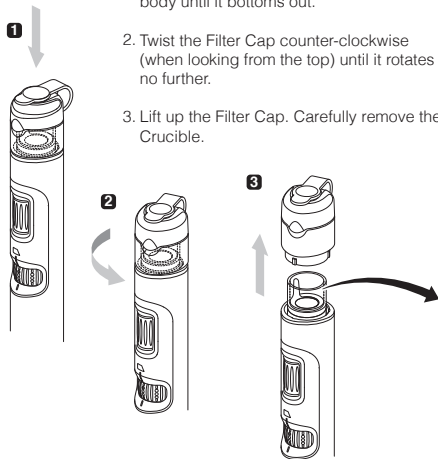
⚠ WARNING

Always switch the power off after using your PX1. Leaving it on risks accidental activation of the heater, and drains the battery.

Cleaning

Remove the Crucible

1. Push the Filter Cap down towards the PX1 body until it bottoms out.
2. Twist the Filter Cap counter-clockwise (when looking from the top) until it rotates no further.
3. Lift up the Filter Cap. Carefully remove the Crucible.



⚠ WARNING
Fragile parts



Remove the Ceramic Filter

1



1. Gently peel the Filter Cap off the Cover.
2. Remove the Ceramic Filter from the Filter Cap.

2



Cleaning the Parts

The removed parts (Filter Cap, Filter, Crucible and Mouthpiece) can be washed. Use the supplied cleaning brush with mild soap and water or alcohol to wash the parts. Do not use any abrasive or sharp tools. Do not expose the PX1 main body to water.



After the parts are washed and dried, assemble them to the PX1 in the reverse order. Note orientation of the Crucible when inserting back onto the PX1.

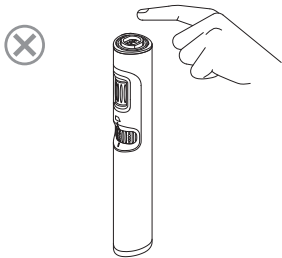


⚠ WARNING

Always ensure that the **power is switched off** before removing the Crucible, Cover and Filter Cap. Once these parts are removed, never turn the power on until the parts are properly assembled to the PX1. An exposed heater element will reach temperatures of 900°C (1,652°F) or more, easily igniting flammable materials that come close to it, or cause severe burns.

Do not use the exposed heater element as a lighter. Ensure that the exposed heater element is kept away from flammable material, and any sharp objects that may damage the heater element.

Never put your finger on the heater, even if the power is switched off. The heater element is arranged in a specific pattern and suspended for optimal performance. Touching the heater element may displace its proper location and adversely affect the temperature range that can be achieved.



Warranty Info

Limited Warranty for the United States and Canada

Aura Medical Inc. ("Aura") warrants to the original purchase that the Wizvape PX1 and accompanying accessories shall be free from defects in material and workmanship for the period(s) outlined below. If a defect covered by the warranty occurs during the warranty period, Aura will repair or replace the defective product or component. The original purchaser is entitled to this warranty only if the date of purchase is registered at point of sale (via www.wizvape.com).

Items Covered	Length of Coverage
PX1 Main Body (excluding battery) Power Adapter	One (1) year from the date of purchase by the first consumer purchaser of the PX1.
Battery	Six (6) months from the date of purchase by the first consumer purchaser of the PX1. Only batteries whose fully charged capacity falls below 70% of the rated capacity and batteries that leak are covered by this limited warranty.
Consumable parts, including Crucible, Cover, Filter Cap, Filter	Not covered except for defect in material or workmanship prior to first use. No coverage if parts are used.

Warranty Exclusions

Abuse & Misuse. Defects or damage that result from (a) improper operation, storage, misuse or abuse, accident or neglect, such as physical damage to the surface of the product resulting from misuse, including use that is contrary to instructions provided by Aura (as set out in the User Guide); (b) contact with liquid, water, rain, extreme humidity, sand, dirt or the like, extreme heat, or food; (c) use of the Products or Accessories for commercial purpose or subjecting the Product or Accessory to abnormal usage or conditions; or (d) other acts which are not the fault of Aura, are excluded from coverage.

Unauthorized Service or Maintenance. Defects or damages resulting from service, testing, adjustment, installation, maintenance, alteration or modification in any way by someone other than Aura, or its authorized service centers, are excluded from coverage.

Normal Wear and Tear. Periodic maintenance, repair and replacement of parts due to normal wear and tear are excluded from coverage.

Altered Products. Products or Accessories with (a) serial numbers or date tags that have been removed or altered; (b) broken seals or that show evidence of tampering; (c) mismatched board serial numbers; or (d) nonconforming or non-Aura housings, or parts, are excluded from coverage.

Contamination of Parts. Products or Accessories returned to Aura with plant material, in any minute amount, are excluded from coverage.

How to Obtain Warranty Service

Please contact Aura Medical Inc. at www.wizvape.com or email to info@wizvape.com for warranty service.

You will receive instructions on how to ship the Products or Accessories, at your expense, to an Aura authorized repair center. To obtain service, you must provide (a) the registered Product serial number; (b) a copy of your receipt, bill of sale or other comparable proof of purchase, which clearly indicates the name and address of the seller, the date and place of purchase and the product model number, and most importantly; (c) your address and telephone number.

Limitations

ANY IMPLIED WARRANTIES, INCLUDING WITHOUT LIMITATIONS THE IMPLIED WARRANTIES OR MERCHANTABILITY AND FITNESS FOR A PARTICULAR PURPOSE, SHALL BE LIMITED TO THE DURATION OF THIS LIMITED WARRANTY, OTHERWISE THE REPAIR, REPLACEMENT, OR REFUND AS PROVIDED UNDER THIS EXPRESS LIMITED WARRANTY IS THE EXCLUSIVE REMEDY OF THE CONSUMER, AND IS PROVIDED IN LIEU OF ALL OTHER WARRANTIES, EXPRESS OR IMPLIED. IN NO EVENT SHALL AURA MEDICAL INC. BE LIABLE, WHETHER IN CONTRACT OR TORT (INCLUDING NEGLIGENCE) FOR DAMAGES IN EXCESS OF THE PURCHASE PRICE OF THE PRODUCT OR ACCESSORY, OR FOR ANY INDIRECT, INCIDENTAL, SPECIAL OR CONSEQUENTIAL DAMAGES OF ANY KIND, OR LOSS OF REVENUE OR PROFITS, LOSS OF BUSINESS, LOSS OF INFORMATION OR DATA, SOFTWARE OR APPLICATIONS OR OTHER FINANCIAL LOSS ARISING OUT OF OR IN CONNECTION WITH THE ABILITY OR INABILITY TO USE THE PRODUCTS OR ACCESSORIES TO THE FULL EXTENT THESE DAMAGES MAY BE DISCLAIMED BY LAW. SOME STATES DO NOT ALLOW LIMITATIONS ON HOW LONG AND IMPLIED WARRANTY LASTS OR EXCLUSION OF CONSEQUENTIAL OR INCIDENTAL DAMAGES, SO THE ABOVE LIMITATIONS MAY NOT APPLY TO YOU. THIS WARRANTY GIVES YOU SPECIFIC LEGAL RIGHTS, YOU MAY ALSO HAVE OTHER RIGHTS WHICH VARY FROM STATE TO STATE OR PROVINCE TO PROVINCE.

Wizvape PX1 is proudly
designed and engineered in the USA.
Assembled in Singapore with materials and parts
originating from USA, Taiwan, Singapore, Japan and Korea.
Power adapter and cable made in China.

All features, functionality, and other product specifications, as well as the information contained in this guide, are based upon the latest available information and believed to be accurate at the time of printing. Aura Medical Inc. reserves the right to change or modify any information or specifications without notice or obligation.