

# ***LP-II***

*VER 2.00*

---

## **SOFTWARE PACKAGE**

---

## **OWNER'S MANUAL**

S  
A  
C



Attention:

Copyright© 2001, by CAS Corporation. All rights reserved. No part of this publication may be reproduced, transmitted, transcribed, stored in a retrieval system, or translated into any language or computer language, in any form or by any means, electronic, mechanical, magnetic, optical, chemical, manual or otherwise, without the prior expressed written permission of this company.

Disclaimer:

This company makes no representations or warranties, either expressed or implied, with respect to the contents hereof and specifically disclaims any warranties of merchantability or fitness for any particular purpose. Any software described in this manual is sold or licensed "as is". Should the programs prove defective following their purchase, the buyer (and not this company, its distributors, or its dealers) assumes the entire cost of all necessary servicing, repair, and any incidental or consequential damages resulting from any defect in the software. Further, this company reserves the right to revise this publication and to make changes from time to time in the contents hereof without obligation to notify any person of such revision or changes.

## Table of Contents

|  |           |
|--|-----------|
| <b>1. Introduction</b> .....                                 | <b>5</b>  |
| 1.1 Version and Specifications .....                         | 5         |
| <b>2. Installing and Running the Software</b> .....          | <b>6</b>  |
| 2.1 Tool Bar .....   | 7         |
| <b>3. Code Menu</b> .....                                    | <b>9</b>  |
| 3.1 Department Programming.....                              | 9         |
| 3.2 Operator Assignments.....                                | 10        |
| 3.3 Scrolling Message Programming.....                       | 12        |
| 3.4 Label Message Programming.....                           | 12        |
| 3.5 Tax Programming.....                                     | 13        |
| 3.6 Additional Text.....                                     | 14        |
| 3.7 Nutritional Facts Programming.....                       | 15        |
| 3.8 Barcode Programming.....                                 | 16        |
| 3.9 Origin Programming.....                                  | 17        |
| 3.10 Speed Key Set.....                                      | 19        |
| <b>4. Data Menu</b> .....                                    | <b>20</b> |
| 4.1 Store ID .....   | 20        |
| 4.2 Scale Assignments.....                                   | 21        |
| 4.3 Scrolling Message Assignment.....                        | 22        |
| <b>5. PLU Creation (Excel File, LP-1 File Import )</b> ..... | <b>23</b> |
| 5.1 PLU Add, Copy, Delete.....                               | 24        |
| <b>6. Configuration Menu</b> .....                           | <b>27</b> |
| <b>7. Download Menu</b> .....                                | <b>29</b> |
| 7.1 PLU Download.....  | 30        |
| 7.2 Scale Control .....                                      | 32        |
| 7.3 Global Data Download.....                                | 33        |
| 7.4 Global Label Setting.....                                | 34        |
| <b>8. Upload</b> .....                                       | <b>35</b> |
| <b>9. Report Menu</b> .....                                  | <b>36</b> |
| 9.1 Daily Report.....  | 36        |
| 9.2 Weekly Report.....                                       | 39        |
| 9.3 Monthly Report.....                                      | 40        |
| <b>10. LP-II Messenger Program</b> .....                     | <b>41</b> |
| 10.1 Sales Report.....                                       | 42        |
| 10.2 IP Address.....   | 43        |
| 10.3 Configuration.....                                      | 45        |

|                                     |           |
|-------------------------------------|-----------|
| <b>11. LP-II Label Editor</b> ..... | <b>46</b> |
| 11.1 Label Generator.....           | 46        |
| 11.2 Label viewer.....              | 47        |
| 11.3 Label Generator Tool Bar.....  | 47        |
| 11.4 Field Specifications.....      | 48        |
| 11.5 Label Download.....            | 49        |
| <b>Reference</b> .....              | <b>51</b> |
| A. LP-2 Network .....               | 51        |
| B. Cable .....                      | 54        |

## 1. Introduction

Thank you for purchasing the CAS LP-II Software Package. We have designed this product with many advanced features and user-friendly menu-driven programming. We are confident that you will find that the CAS LP-II Software Package will meet all of your most demanding needs.

Sales data are easily acquired through many of the available sorting and consolidating reports which are quickly accessible through on-screen menus. Also available: password protection, full access to ALL scale programming features, and advanced WYSIWYG (What You See Is What You Get) label formatting for creating the most intricate of label formats.

This Software Package also can serve as a great back-up-and-restore medium not just for PLU data but for ALL scale programming data. You can keep track of any system from a stand-alone set-up (just 1 LP-II) to an entire store with network! What's more, you can even keep track of several stores each with a 32-scale network!

Remember, for proper installation and maintenance please have your Authorized CAS Dealer do the primary installation, programming, and demonstration. Your CAS Authorized Dealer also has a wide variety of supplies, accessories, and expansion options for whatever your new and increasing demands may require.

### 1.1 Version and Specifications

1) Version: VER. 2.00

2) Model: LP-II Software Package

3) System Requirements:

PC with a Pentium 333MHz or higher

32 MB of RAM (64 MB recommended)

Free RS-232 port

Supported Network Protocol : TCP/IP

Mouse or other pointing device

CD-ROM Drive

Microsoft Windows® 98/2000 compatible

Language Support : Korea, English

Hard-disk space required: 15 MB free space

Data Space : 10 MB, Application Space : 5MB

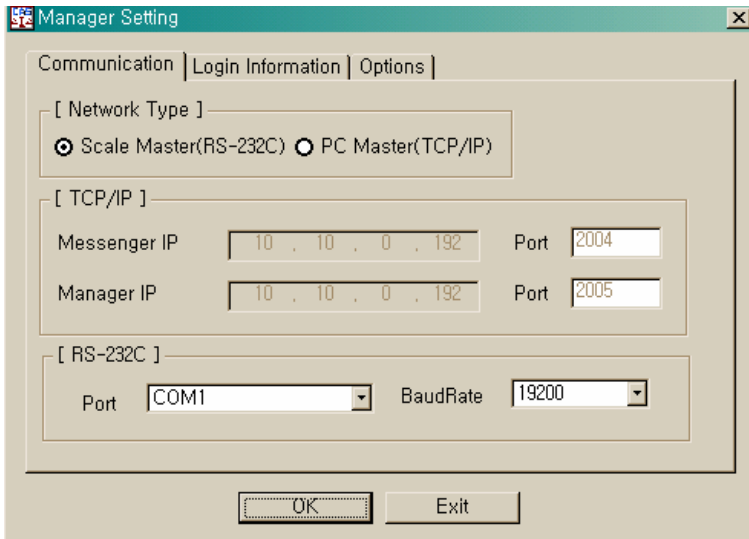
VGA or higher-resolution monitor

4) Cable pin configurations and interface

See Reference B on page 52.

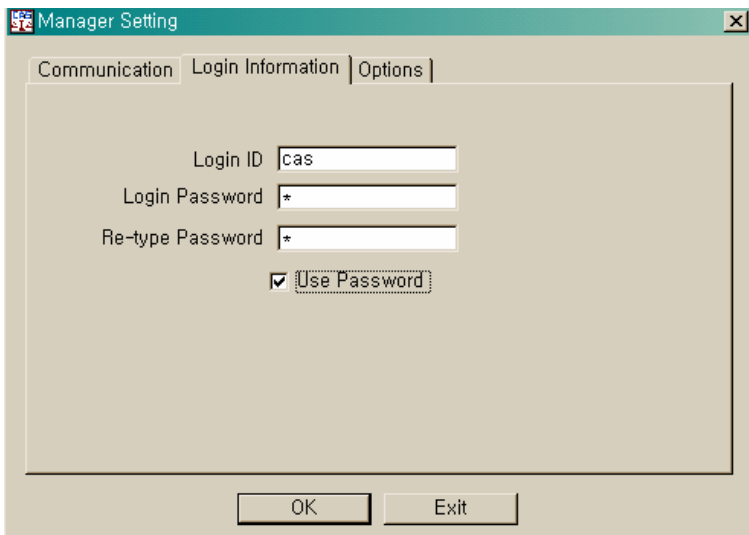
## 2. Installing and Running the Software

After completing the installation, turn off PC and turn on PC again. You will see the screen as below.



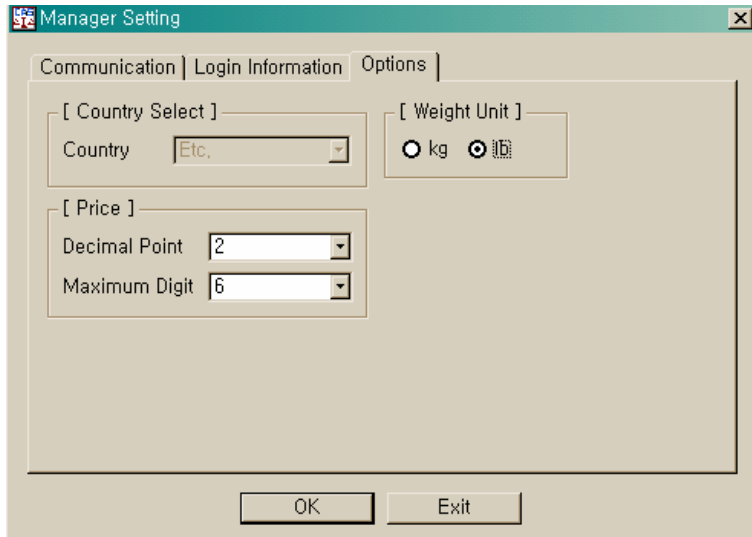
In the Communication tab, Network Type is set to Scale Master(RS-232C) and Weight Unit is set to kg as default. Messenger IP is set to IP of PC automatically. RS-232C Port is set to COM1 and Baud Rate is set to 19200. Network Type and RS-232C is related to data Download/Upload and sales reports. Refer to reference.

Click Login Information tab, you will see the screen as below.



You can set the ID and password here. To use this ID and password, you have to check Use Password.

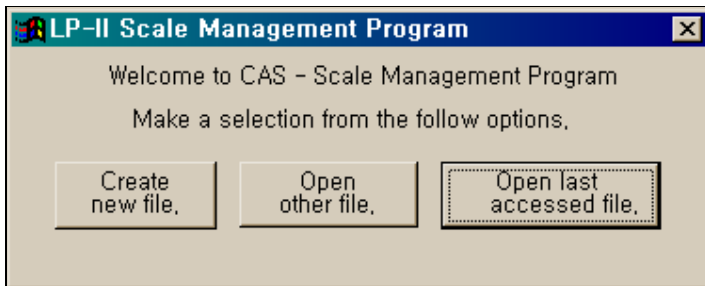
Click Options tab, you will see the screen as below.



You can set Weight Unit, Country, Price decimal point, and Maximum price digit here. Country Selection is available to all versions except USA version. Weight unit is available to USA version only.

After completing to set up, click the OK button. You will see this message “You must restart the program”. And then the program is closed automatically.

Setup is completed. Operate the LP-II Manager program, you will see the screen as below.

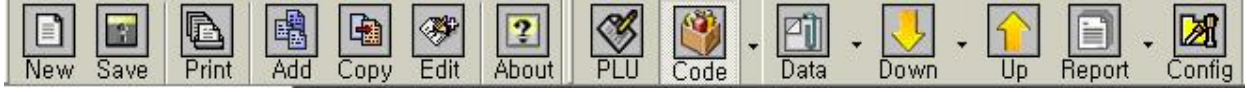


The Initial Options window gives three options to immediately choose from: Create new file, Open other file and Open last accessed file. Once you select one of these options, the initial Options window will close.

- \* Create new file : This button allows you start a new Store Data Base for a store network.
- \* Open other file : This option allows you select from any existing Store Date Bases stored on your hard drive.
- \* Open last accessed file : This button allows you open to the last Store Data Base you used.

## 2.1 Tool Bar

The Tool Bar has 11 different icons, some you are familiar with from use in Windows® 98/2000 others are unique to the LP-2 software package. See the Tool Bare below.

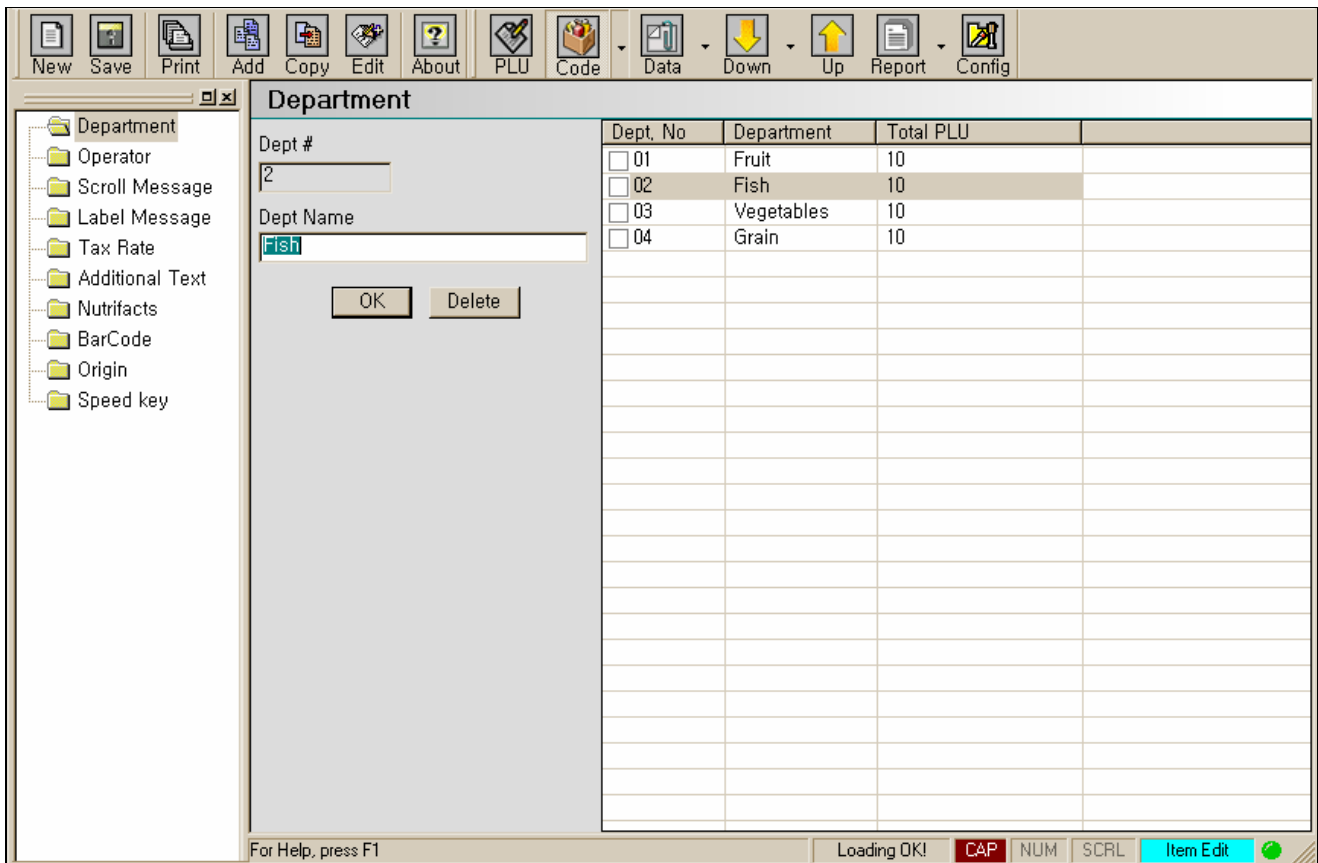


The New, Save, Print icons work the same as with Windows® 98 applications. The Add, Copy, and Edit icons are used to ADD, COPY, or EDIT entire records such as Department, PLUs, etc. Some buttons are available only when there is an open file.



### 3. Code Menu

Click Code icon, you will see the screen as below. You can add, copy or edit data.



| Dept, No                    | Department | Total PLU |
|-----------------------------|------------|-----------|
| <input type="checkbox"/> 01 | Fruit      | 10        |
| <input type="checkbox"/> 02 | Fish       | 10        |
| <input type="checkbox"/> 03 | Vegetables | 10        |
| <input type="checkbox"/> 04 | Grain      | 10        |

#### 3.1 Department Programming

Click Department option on the Code Menu, you will see the screen as below. After programming department data, you can use it PLU and Data menu.

| Department |                             |            |           |  |
|------------|-----------------------------|------------|-----------|--|
| Dept #     | Dept. No                    | Department | Total PLU |  |
| 2          | <input type="checkbox"/> 01 | Fruit      | 10        |  |
|            | <input type="checkbox"/> 02 | Fish       | 10        |  |
|            | <input type="checkbox"/> 03 | Vegetables | 10        |  |
|            | <input type="checkbox"/> 04 | Grain      | 10        |  |
|            |                             |            |           |  |
|            |                             |            |           |  |
|            |                             |            |           |  |
|            |                             |            |           |  |
|            |                             |            |           |  |

Dept Name:

Department programming allows you to create, edit, or delete departments by using Add, Copy, and Edit icons.

You may have up to 32 departments and each department name can be up to 20 characters long. The Department programming window shows a listing of existing departments from which to choose from, a field for you to enter the department number, and a field for you to type in a new department or to change on existing one.

| Department |  |            |           |  |
|------------|--|------------|-----------|--|
| Dept #     | Dept. No                               | Department | Total PLU |  |
| 2          | <input type="checkbox"/> 01            | Fruit      | 10        |  |
|            | <input checked="" type="checkbox"/> 02 | Fish       | 10        |  |
|            | <input type="checkbox"/> 03            | Vegetables | 10        |  |
|            | <input type="checkbox"/> 04            | Grain      | 10        |  |
|            |  |            |           |  |
|            |  |            |           |  |
|            |  |            |           |  |
|            |  |            |           |  |
|            |  |            |           |  |

Dept Name:

### 3.2 Operator Assignments

Operator Assignment allows you to determine what employees have access to what scale on your network and what level of security they may have. To access Operator assignments, click Operator option on the Code Menu. The Operator Assignment window shows a listing of the existing operators. It also has a field for you to enter the operator name, password, departmental access, and operator level. The Operator Name can be 20 characters long; the Password can be 5 characters long; the Operator level can be Operator(1), Store manager(2), or Department manager(3); and the departmental access can be one specific department or all departments. See the Scale Owner's Manual for details.

### Operator

| ID No                       | Department | Name | Operator Level |
|-----------------------------|------------|------|----------------|
| <input type="checkbox"/> 01 | All        | hsj  | Store Mana...  |
| <input type="checkbox"/> 02 | Fruit      | nara | Operator       |
| <input type="checkbox"/> 03 | Fish       | hyp  | Operator       |
| <input type="checkbox"/> 04 | Vegetables | min  | Operator       |

ID #   
 Name  Password   
 Dept #   
 Level

You can create, edit, or copy operator by using Add, Edit or Copy icons. To delete operator, click Edit icon, check ID No check box, and click Delete button as below.

### Operator

| ID No                                  | Department | Name | Operator Level |
|--|------------|------|----------------|
| <input type="checkbox"/> 01            | All        | hsj  | Store Mana...  |
| <input checked="" type="checkbox"/> 02 | Fruit      | nara | Operator       |
| <input type="checkbox"/> 03            | Fish       | hyp  | Operator       |
| <input type="checkbox"/> 04            | Vegetables | min  | Operator       |

ID #   
 Name  Password   
 Dept #   
 Level

### 3.3 Scrolling Message Programming.

Scrolling Messages allow you to advertise and inform your customers. When idle, the scales can display pre-programmed messages. To access Scrolling Message Programming, click Scroll Message on the Code Menu. The Scrolling Message Programming window shows a listing of the existing scales.

| Scroll Message On Display  |                             |                      |  |
|--|-----------------------------|----------------------|--|
| Message #  | Message No                  | Message              |  |
| Message #<br><input type="text" value="2"/><br>Text<br><input type="text" value="We weigh the world!"/><br><input type="button" value="OK"/> <input type="button" value="Delete"/> | <input type="checkbox"/> 01 | Welcome to CAS!      |  |
|  | <input type="checkbox"/> 02 | We weigh the world!  |  |
|  | <input type="checkbox"/> 03 | http://www.cas.co.kr |  |
|  | <input type="checkbox"/> 04 | +82-31-820-1100      |  |
|  |                             |                      |  |
|  |                             |                      |  |
|  |                             |                      |  |

You can program up to 32 messages. You can create, edit, or copy message by using Add, Edit or Copy icons. To delete message, click Edit icon, check Message No check box, and click Delete button.

| Scroll Message On Display  |  |                      |  |
|--|--|----------------------|--|
| Message #  | Message No                             | Message              |  |
| Message #<br><input type="text" value="2"/><br>Text<br><input type="text" value="We weigh the world!"/><br><input type="button" value="OK"/> <input type="button" value="Delete"/> | <input type="checkbox"/> 01            | Welcome to CAS!      |  |
|  | <input checked="" type="checkbox"/> 02 | We weigh the world!  |  |
|  | <input type="checkbox"/> 03            | http://www.cas.co.kr |  |
|  | <input type="checkbox"/> 04            | +82-31-820-1100      |  |
|  |  |                      |  |
|  |  |                      |  |
|  |  |                      |  |

### 3.4 Label Message Programming

Label Messages allow you to advertise and inform your customers long after they leave your store. Each PLU has the ability to be linked to 1 of 32 Label Messages. To access Label Message Programming, click Label Message on Code Menu. Label Message Programming window shows a listing of the existing messages.

| Sales Message On Label |                             |                           |  |
|------------------------|-----------------------------|---------------------------|--|
| Message #              | Message No                  | Message                   |  |
| 2                      | <input type="checkbox"/> 01 | Thank you!                |  |
|                        | <input type="checkbox"/> 02 | A bargain sale!           |  |
|                        | <input type="checkbox"/> 03 | A bargain-priced article. |  |
|                        |                             |                           |  |
|                        |                             |                           |  |
|                        |                             |                           |  |
|                        |                             |                           |  |
|                        |                             |                           |  |
|                        |                             |                           |  |

Message #  
2

Text  
A bargain sale!

OK Delete

You can create, edit, or copy label messages by using Add, Edit or Copy icons. To delete label message, click Edit icon, check Message No check box, and click Delete button.

| Sales Message On Label |  |                           |  |
|------------------------|--|---------------------------|--|
| Message #              | Message No                             | Message                   |  |
| 2                      | <input type="checkbox"/> 01            | Thank you!                |  |
|                        | <input checked="" type="checkbox"/> 02 | A bargain sale!           |  |
|                        | <input type="checkbox"/> 03            | A bargain-priced article. |  |
|                        |  |                           |  |
|                        |  |                           |  |
|                        |  |                           |  |
|                        |  |                           |  |
|                        |  |                           |  |
|                        |  |                           |  |

Message #  
2

Text  
A bargain sale!

OK Delete

### 3.5 Tax Programming

Tax Programming allows you to set 3 different TAX rates. To access Tax Programming, click Tax Rate option on the Code Menu.

Tax Rate 1  %

Tax Rate 2  %

Tax Rate 3  %

OK Cancel



### 3.7 Nutritional Facts Programming

To access Nutrition Facts, click Nutrition Facts option on Code Menu.

#### Nutrition Facts

| Nutri-Facts No              | Description     |
|-----------------------------|-----------------|
| <input type="checkbox"/> 01 | Nutri (Tablet)  |
| <input type="checkbox"/> 02 | Nutri (spoon)   |
| <input type="checkbox"/> 03 | Nutri (pill)    |
| <input type="checkbox"/> 04 | Nutri (capsule) |
|                             |                 |
|                             |                 |

Nutri #  Description

|                       |   |               |   |
|-----------------------|---|---------------|---|
| Serving Size:         | <input style="width: 80%;" type="text" value="spoon"/>    | Calories:     | <input style="width: 40%;" type="text" value="2"/>            |
| Servings / Container: | <input style="width: 80%;" type="text" value="50 spoon"/> | Calories from | <input style="width: 40%;" type="text" value="2"/>            |
| Total Fat:            | <input style="width: 40%;" type="text" value="1"/> Grams  | Cholesterol:  | <input style="width: 40%;" type="text" value="2"/> Milligram  |
| Saturated Fat:        | <input style="width: 40%;" type="text" value="1"/> Grams  | Sodium:       | <input style="width: 40%;" type="text" value="2"/> Milligrams |
| Total Carbohydrate:   | <input style="width: 40%;" type="text" value="1"/> Grams  | Vitamin A:    | <input style="width: 40%;" type="text" value="3"/> % MDR      |
| Dietary Fiber:        | <input style="width: 40%;" type="text" value="1"/> Grams  | Vitamin C:    | <input style="width: 40%;" type="text" value="6"/> % MDR      |
| Sugars:               | <input style="width: 40%;" type="text" value="1"/> Grams  | Calcium:      | <input style="width: 40%;" type="text" value="5"/> % MDR      |
| Protein:              | <input style="width: 40%;" type="text" value="1"/> Grams  | Iron:         | <input style="width: 40%;" type="text" value="2"/> % MDR      |

For a value less than 1, enter -1 (minus 1)

[Panel Size]  Small  Large

Enter the appropriate values in each of the Nutritional Facts fields. Then, depending on the item that this PLU will be used for, select the appropriate panel size in from the Panel Size Box. You can program up to 32 Nutrition Facts.

You can create, edit, or copy Nutrition Facts by using Add, Edit or Copy icons. To delete Nutrition Facts, click Edit icon, check Nutri-Facts No check box, and click Delete button.

### Nutrition Facts

| Nutri-Facts No                         | Description     |
|--|-----------------|
| <input type="checkbox"/> 01            | Nutri (Tablet)  |
| <input checked="" type="checkbox"/> 02 | Nutri (spoon)   |
| <input type="checkbox"/> 03            | Nutri (pill)    |
| <input type="checkbox"/> 04            | Nutri (capsule) |
|  |                 |

Nutri #       Description

|   |   |
|---|---|
| Serving Size: <input type="text" value="spoon"/>            | Calories: <input type="text" value="2"/>              |
| Servings / Container: <input type="text" value="50 spoon"/> | Calories from <input type="text" value="2"/>          |
| Total Fat: <input type="text" value="1"/> Grams             | Cholesterol: <input type="text" value="2"/> Milligram |
| Saturated Fat: <input type="text" value="1"/> Grams         | Sodium: <input type="text" value="2"/> Milligrams     |
| Total Carbohydrate: <input type="text" value="1"/> Grams    | Vitamin A: <input type="text" value="3"/> % MDR       |
| Dietary Fiber: <input type="text" value="1"/> Grams         | Vitamin C: <input type="text" value="6"/> % MDR       |
| Sugars: <input type="text" value="1"/> Grams                | Calcium: <input type="text" value="5"/> % MDR         |
| Protein: <input type="text" value="1"/> Grams               | Iron: <input type="text" value="2"/> % MDR            |

For a value less than 1, enter -1 (minus 1)


[Panel Size]  Small     Large

### 3.8 Barcode Programming

To access Barcode, click Barcode option on Code Menu.

You can program up to 32 barcode here. You can create, edit, or copy Barcode by using Add, Edit or Copy icons. To delete Barcode, click Edit icon, check Barcode No check box, and click Delete button.

If you click Edit Format button on Format String Box, you can edit Barcode string. To enter N (Item#), P (Price), D (Dept#), W (Weight), V (Price Check) on Format Selection Box, click  buttons.

[Format Selections.....Width]

|   |   |   |                 |   |   |   |
|---|---|---|-----------------|---|---|---|
| 0 | 1 | 2 | N (Item #)      | 2 | ▲ | ▼ |
| 3 | 4 | 5 | P (Price)       | 2 | ▲ | ▼ |
| 6 | 7 | 8 | D (Dept #)      | 2 | ▲ | ▼ |
| 9 |   |   | W (Weight)      | 2 | ▲ | ▼ |
|   |   |   | V (Price Check) |   |   |   |

[ Format String ]

02NNPPDD

8 characters  
(12 characters, maximum)

You can see the result on Format String Box. To enter numerical data, click numeric key on Format Selection Box.



### BarCode

| Barcode No                             | Type   | Format String | Description  |
|--|--------|---------------|--------------|
| <input type="checkbox"/> 01            | UPC 12 | 2NNNNNVPPPP   | UPC12 Bar... |
| <input checked="" type="checkbox"/> 02 | UPC 13 | 02NNNNNPPPPP  | UPC13 Bar... |
| <input type="checkbox"/> 03            | EAN 13 | 02NNNNNVPPPP  | EAN13 Bar... |
| <input type="checkbox"/> 04            | EAN 8  | 08NNNNN       | EAN8 Barc... |

Barcode #  Type

Comment

[Format Selections.....Width]

|                                |                                |                                |                 |                                |
|--------------------------------|--------------------------------|--------------------------------|-----------------|--------------------------------|
| <input type="text" value="0"/> | <input type="text" value="1"/> | <input type="text" value="2"/> | N (Item #)      | <input type="text" value="0"/> |
| <input type="text" value="3"/> | <input type="text" value="4"/> | <input type="text" value="5"/> | P (Price)       | <input type="text" value="0"/> |
| <input type="text" value="6"/> | <input type="text" value="7"/> | <input type="text" value="8"/> | D (Dept #)      | <input type="text" value="0"/> |
| <input type="text" value="9"/> |                                |                                | W (Weight)      | <input type="text" value="0"/> |
|                                |                                |                                | V (Price Check) |                                |

[ Format String ]

12 characters  
(12 characters, maximum)

### 3.9 Origin Programming

To access Origin, click Origin option on Code Menu. You can program origin from 256 to 400.

### Country of Origin

Origin #

Origin

| Origin No                    | Origin     |
|------------------------------|------------|
| <input type="checkbox"/> 256 | Pusan      |
| <input type="checkbox"/> 257 | Pyung Taek |
| <input type="checkbox"/> 258 | Taejeon    |
| <input type="checkbox"/> 399 | Ulsan      |
| <input type="checkbox"/> 400 | Jeju Do    |

If you want to see all origins, click View All list button.

**Country of Origin**

View Editable list

Origin #  
400

Origin  
Jeju Do

OK Delete

| Origin No                    | Origin        |
|------------------------------|---------------|
| <input type="checkbox"/> 235 | Uruguay       |
| <input type="checkbox"/> 236 | Uzbekistan    |
| <input type="checkbox"/> 237 | [blank]       |
| <input type="checkbox"/> 238 | [blank]       |
| <input type="checkbox"/> 239 | Vanuatu       |
| <input type="checkbox"/> 240 | Vatican City  |
| <input type="checkbox"/> 241 | Venezuela     |
| <input type="checkbox"/> 242 | Vietnam       |
| <input type="checkbox"/> 243 | [blank]       |
| <input type="checkbox"/> 244 | [blank]       |
| <input type="checkbox"/> 245 | Western Samoa |
| <input type="checkbox"/> 246 | [blank]       |
| <input type="checkbox"/> 247 | [blank]       |
| <input type="checkbox"/> 248 | Yemen         |
| <input type="checkbox"/> 249 | Yugoslavia    |
| <input type="checkbox"/> 250 | [blank]       |
| <input type="checkbox"/> 251 | [blank]       |
| <input type="checkbox"/> 252 | Zambia        |
| <input type="checkbox"/> 253 | Zimbabwe      |
| <input type="checkbox"/> 254 | [blank]       |
| <input type="checkbox"/> 255 | [blank]       |
| <input type="checkbox"/> 256 | Pusan         |
| <input type="checkbox"/> 257 | Pyung Taek    |
| <input type="checkbox"/> 258 | Taejeon       |
| <input type="checkbox"/> 399 | Ulsan         |
| <input type="checkbox"/> 400 | Jeju Do       |

If you click View Editable list, you can program origin again.

You can create, edit, or copy Origin by using Add, Edit or Copy icons. To delete Origin, click Edit icon, check Origin No check box, and click Delete button.

**Country of Origin**

View All list

Origin #  
257

Origin  
Pyung Taek

OK Delete

| Origin No                               | Origin     |
|---|------------|
| <input type="checkbox"/> 256            | Pusan      |
| <input checked="" type="checkbox"/> 257 | Pyung Taek |
| <input type="checkbox"/> 258            | Taejeon    |
| <input type="checkbox"/> 399            | Ulsan      |
| <input type="checkbox"/> 400            | Jeju Do    |
|   |            |
|   |            |
|   |            |
|   |            |

### 3.10 Speed Key Set

To access Speed Key, click Speed Key option on Code Menu. To edit or create Speed Key, click Edit icon. To delete Speed key, check Speed Key No check box and click Delete button.

| Speed Key  |                                | SpeedKe...                  | Dept. Name | Description         |
|--|--------------------------------|-----------------------------|------------|---------------------|
| Speed Key Map #  | Function Key #                 | <input type="checkbox"/> 01 | Vegetables | Vegetables Speed... |
| <input type="text" value="2"/>   | <input type="text" value="0"/> | <input type="checkbox"/> 02 | Grain      | Grain SpeedKey #2   |
| Department #   |                                | <input type="checkbox"/> 03 | Fruit      | Fruit SpeedKey #3   |
| <input type="text" value="04 - Grain"/>  |                                | <input type="checkbox"/> 04 | Fish       | Fish SpeedKey #4    |
| Description  |                                |                             |            |                     |
| <input type="text" value="Grain SpeedKey #2"/>   |                                |                             |            |                     |
| <input type="button" value="Edit S-Key"/> <input type="button" value="Delete"/> <input type="button" value="Print"/> |                                |                             |            |                     |

You can create or edit Speed Key Map to assign this Speed Key to each Department as above. For example, Speed Key Map #2 is assigned to Department #4. To create or edit Speed Key Map, click Edit S-Key button. You will see the Speed Key Map screen as below.

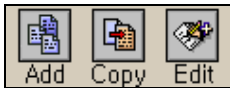
| Speed Key Setting  |                                 |                                 |                                 |                                 |                                 |                                 |                                 |
|--|---------------------------------|---------------------------------|---------------------------------|---------------------------------|---------------------------------|---------------------------------|---------------------------------|
| [ SPEED KEY MAP ]  |                                 |                                 |                                 |                                 |                                 |                                 | Rice                            |
| 1  | 2                               | 3                               | 4                               | 5                               | 6                               | 7                               | 8                               |
| <input type="text" value="11"/>  | <input type="text" value="2"/>  | <input type="text" value="3"/>  | <input type="text" value="4"/>  | <input type="text" value="5"/>  | <input type="text" value="6"/>  | <input type="text" value="7"/>  | <input type="text" value="8"/>  |
| 9  | 10                              | 11                              | 12                              | 13                              | 14                              | 15                              | 16                              |
| <input type="text" value="9"/>   | <input type="text" value="10"/> | <input type="text" value="11"/> | <input type="text" value="12"/> | <input type="text" value="13"/> | <input type="text" value="14"/> | <input type="text" value="15"/> | <input type="text" value="16"/> |
| 17   | 18                              | 19                              | 20                              | 21                              | 22                              | 23                              | 24                              |
| <input type="text" value="17"/>  | <input type="text" value="18"/> | <input type="text" value="19"/> | <input type="text" value="20"/> | <input type="text" value="21"/> | <input type="text" value="22"/> | <input type="text" value="23"/> | <input type="text" value="24"/> |
| 25   | 26                              | 27                              | 28                              | 29                              | 30                              | 31                              | 32                              |
| <input type="text" value="25"/>  | <input type="text" value="26"/> | <input type="text" value="27"/> | <input type="text" value="28"/> | <input type="text" value="29"/> | <input type="text" value="30"/> | <input type="text" value="31"/> | <input type="text" value="32"/> |
| 33   | 34                              | 35                              | 36                              | 37                              | 38                              | 39                              | 40                              |
| <input type="text" value="33"/>  | <input type="text" value="34"/> | <input type="text" value="35"/> | <input type="text" value="36"/> | <input type="text" value="37"/> | <input type="text" value="38"/> | <input type="text" value="39"/> | <input type="text" value="40"/> |
| 41   | 42                              | 43                              | 44                              | 45                              | 46                              | 47                              | 48                              |
| <input type="text" value="41"/>  | <input type="text" value="42"/> | <input type="text" value="43"/> | <input type="text" value="44"/> | <input type="text" value="45"/> | <input type="text" value="46"/> | <input type="text" value="47"/> | <input type="text" value="48"/> |
| 49   | 50                              | 51                              | 52                              | 53                              | 54                              | 55                              | 56                              |
| <input type="text" value="49"/>  | <input type="text" value="50"/> | <input type="text" value="51"/> | <input type="text" value="52"/> | <input type="text" value="53"/> | <input type="text" value="54"/> | <input type="text" value="55"/> | <input type="text" value="56"/> |
| <input type="button" value="Shift"/> <input type="button" value="OK"/> <input type="button" value="Cancel"/> |                                 |                                 |                                 |                                 |                                 |                                 |                                 |

You can program a Speed Key : Enter a Speed key number or click SHIFT button and enter a Speed key. Click OK button to save it.

## 4. Data Menu

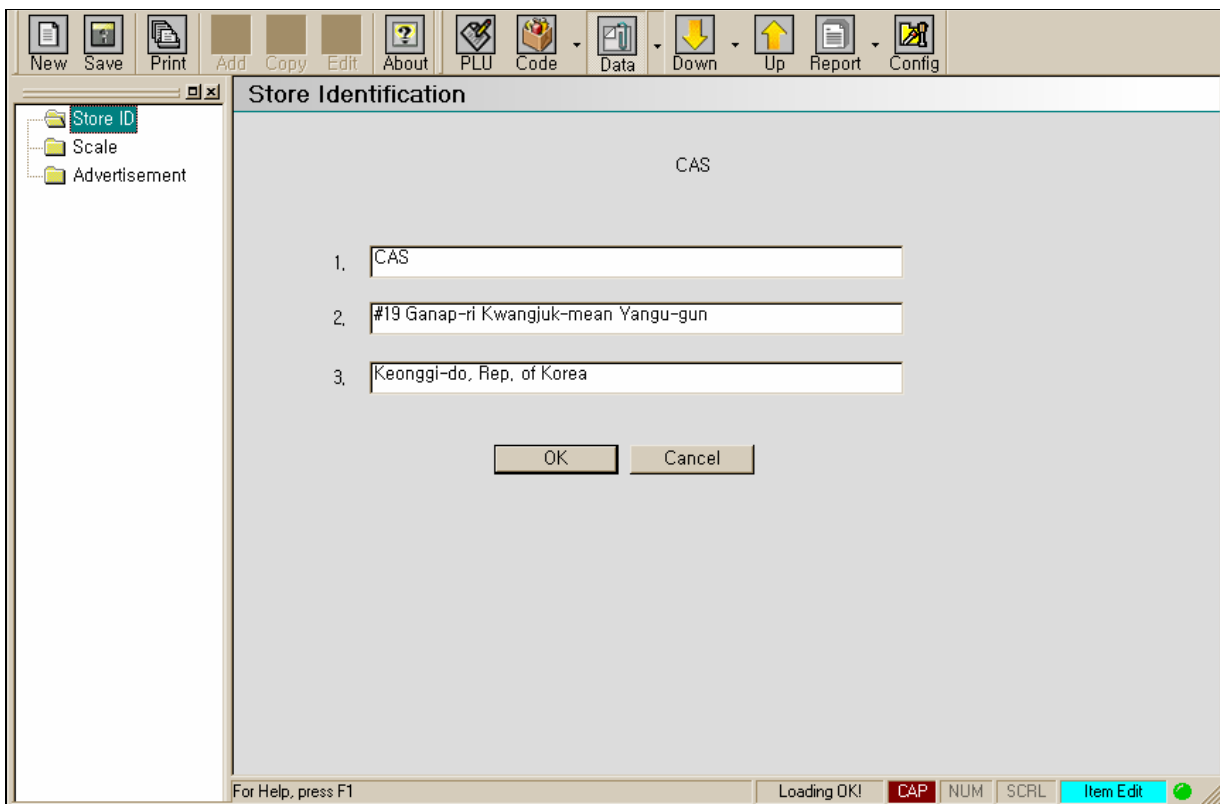
### Tool Bar

The Add, Copy, and Edit icons are used to ADD, COPY, or EDIT data such as Store ID, Advertisement, etc.



### 4.1 Store ID

The Store ID is what the LP-II will print as a name and address on your labels. To access Store ID, click Data icon. The Store ID window shows 3 lines of text containing the existing Store ID. Each line has 20 characters. You can use any numbers, letters, or symbols. Click on any line to begin entering the text for that line and click OK button to accept the data that you typed in.



## 4.2 Scale Assignments

Scale Assignment allows you to determine which scale on your network belongs to what department. This allows you to keep track of sales and PLUs by department number. To access Scale Assignment, click Scale option on Data menu.

| Scale Assignment  |                             |          |       |            |
|---|-----------------------------|----------|-------|------------|
| Scale #   | Scale No                    | Dept. No | S-Key | Dept. Name |
| <input type="text" value="6"/>  | <input type="checkbox"/> 02 | 1        | 1     | Fruit      |
| Department  | <input type="checkbox"/> 03 | 1        | 1     | Fruit      |
| <input type="text" value="01 - Fruit"/>                                 | <input type="checkbox"/> 04 | 1        | 1     | Fruit      |
| Speed Key #   | <input type="checkbox"/> 05 | 3        | 1     | Vegetables |
| <input type="text" value="01 - Vegetables SpeedKey #1"/>                | <input type="checkbox"/> 06 | 1        | 1     | Fruit      |
| <input type="button" value="OK"/> <input type="button" value="Delete"/> |                             |          |       |            |

The Scale Assignment window shows a listing of the existing scales on the network from which to choose from, a field for you to enter the scale number, a field for you to type in a department number and a field for you to type in Speed Key which that scale will be assigned to. Click OK button to finalize the store the data.

You can create, edit, or copy Scale Assignment by using Add, Edit or Copy icons. To delete Scale Assignment, click Edit icon, check Scale No check box, and click Delete button.

| Scale Assignment  |  |          |       |            |
|---|--|----------|-------|------------|
| Scale #   | Scale No                               | Dept. No | S-Key | Dept. Name |
| <input type="text" value="6"/>  | <input type="checkbox"/> 02            | 1        | 1     | Fruit      |
| Department  | <input type="checkbox"/> 03            | 1        | 1     | Fruit      |
| <input type="text" value="01 - Fruit"/>                                 | <input type="checkbox"/> 04            | 1        | 1     | Fruit      |
| Speed Key #   | <input type="checkbox"/> 05            | 3        | 1     | Vegetables |
| <input type="text" value="01 - Vegetables SpeedKey #1"/>                | <input checked="" type="checkbox"/> 06 | 1        | 1     | Fruit      |
| <input type="button" value="OK"/> <input type="button" value="Delete"/> |  |          |       |            |

### 4.3 Scrolling Message Assignment

To access Scrolling Message Assignment, click Advertisement on Data menu.

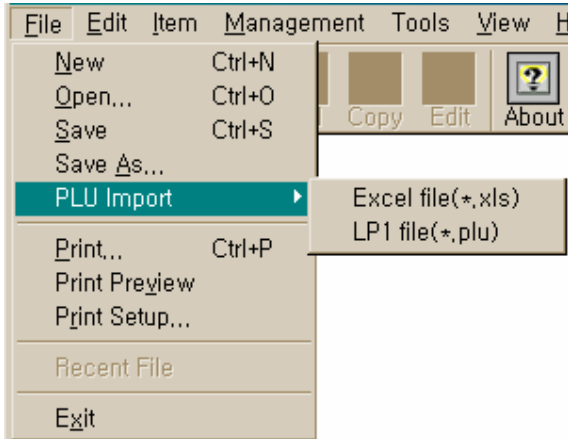
| Advertisement Message  |                          |                                     |                    |                 |                 |              |
|------------------------|--------------------------|-------------------------------------|--------------------|-----------------|-----------------|--------------|
| Scale #                | scal...                  | Message #1                          | Message #2         | Message #3      | Message #4      |              |
| 3                      | <input type="checkbox"/> | 01 We weigh the...                  | Welcome to ...     | +82-31-820-1... | http://ww...    |              |
| Message #1             |                          | 02 Welcome to ...                   | We weigh the...    | http://www...   | Welcome ...     |              |
| Effect                 |                          | <input checked="" type="checkbox"/> | 03 We weigh the... | +82-31-820-1... | Welcome to ...  | We weigh...  |
| 02 We weigh the world! |                          | <input type="checkbox"/>            | 04 http://www,...  | +82-31-820-1... | We weigh the... | We weigh...  |
| 2                      |                          | <input type="checkbox"/>            | 05 We weigh the... | http://www...   | Welcome to ...  | http://ww... |
| Message #2             |                          | <input type="checkbox"/>            | 06 Welcome to ...  | http://www...   | We weigh the... | +82-31-82... |
| 04 +82-31-820-1100     |                          |                                     |                    |                 |                 |              |
| 2                      |                          |                                     |                    |                 |                 |              |
| Message #3             |                          |                                     |                    |                 |                 |              |
| 01 Welcome to CAS!     |                          |                                     |                    |                 |                 |              |
| 2                      |                          |                                     |                    |                 |                 |              |
| Message #4             |                          |                                     |                    |                 |                 |              |
| 02 We weigh the world! |                          |                                     |                    |                 |                 |              |
| 1                      |                          |                                     |                    |                 |                 |              |
| OK                     |                          |                                     |                    |                 |                 |              |
| Delete                 |                          |                                     |                    |                 |                 |              |
| [Help - effect option] |                          |                                     |                    |                 |                 |              |
| 0 : Scroll             |                          |                                     |                    |                 |                 |              |
| 1 : Scroll + Flash     |                          |                                     |                    |                 |                 |              |
| 2 : Cross              |                          |                                     |                    |                 |                 |              |
| 3 : Cross + Flash      |                          |                                     |                    |                 |                 |              |

Scrolling Message Assignment determine what messages get displayed on which scale and how they get displayed. Each scale can sequence up to 4 different messages with 4 different effects. Click OK button to store the data.

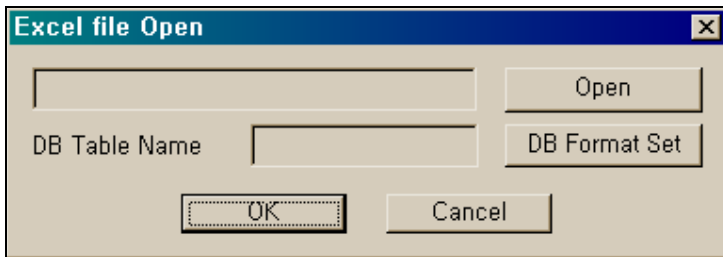
You can create, edit, or copy Scrolling Message Assignment by using Add, Edit or Copy icons.

## 5. PLU Creation (Excel File, LP-1 File Import )

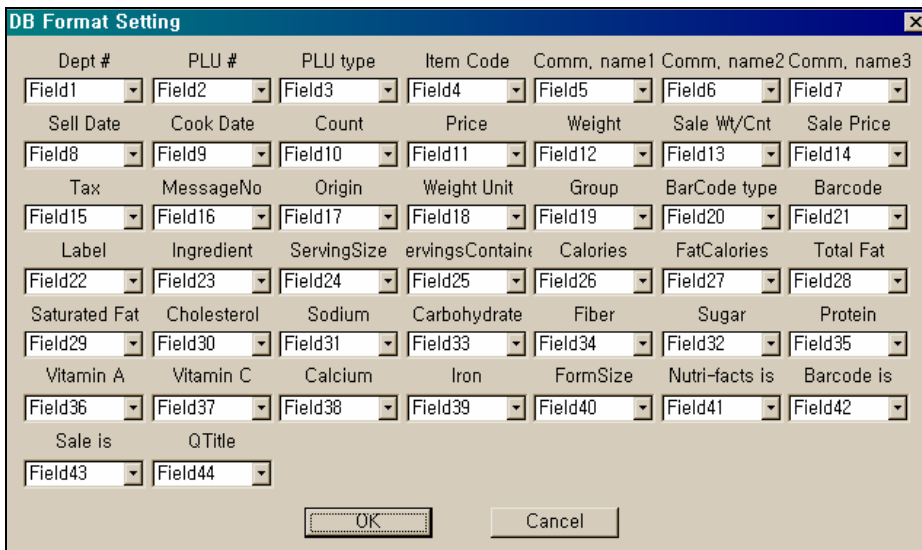
Click PLU icon on the Tool Bar and then click File on the menu. Click PLU Import then you will see two options. You can import Excel file or LP1 file to PLU.



Click Excel file, you will see the screen as below.



Click DB Format Set button, you will see the screen as below. Note: It does not need to be fixed whenever opening the file, but you just can fix it in the first place. In case there is the change in the format of Excel File hereafter, you can set it up again. .



You have to select Excel File Field number and if you do not use field, select No Data. Make sure that you select same field number as Excel File. Click OK button to save DB Format Setting. Click Open button then you can open Excel file.

## 5.1 PLU Add, Copy, Delete

### (1) PLU Add

To create a PLU, click Add button then you will see the screen as below.

Select the department number then click OK button.

A PLU is created as below.

| A                        | Dept | PLU No | Type | Item Code | Comm. Name(1) | (2) | (3) | Origin        | Unit Price | Count | Sell by | Cook by | Group | Tare |
|--------------------------|------|--------|------|-----------|---------------|-----|-----|---------------|------------|-------|---------|---------|-------|------|
| <input type="checkbox"/> | 01   | 000001 | W    | 0         |               |     |     | Not assign... | 0,00       | X     | 0       | 0       | 0     | 0    |

You have to enter all required data for the PLU such as PLU No, Type, Item code and so on.

Type: PLUs can be By-Weight(W), By-Count(C), or Non-Food(N).

If you select W for PLU Type, Count is assigned to X as default because you do not need to enter count for this PLU. Enter all fields for PLU.

### (2) PLU Copy



[ Find ]  
 Dept # ALL  
 PLU# ~  
 Item#  
 Name Find

[ Additional Commodity Name ]  
 PLU No 1  
 Name 2 kookgwang  
 Name 3 korea

Add  
 Copy  
 Delete

| A                                   | Dept | PLU No | Type | Item Code | Comm. Name(1) | (2)     | (3)   | Origin       | Unit Price | Count | Sell by | Cook by | Group | Tare |
|-------------------------------------|------|--------|------|-----------|---------------|---------|-------|--------------|------------|-------|---------|---------|-------|------|
| <input checked="" type="checkbox"/> | 01   | 000001 | W    | 0         | Apple         | kook... | korea | Korea, So... | 1.00       | X     | 0       | 0       | 1     | 0    |

You have to check the A check box that you wish to copy as above and then click Copy button, you will see screen the as below.

Please enter number to copy.

Number 1

OK Cancel

Enter number to copy and click OK button.

PLU is copied as below.

[ Find ]  
 Dept # ALL  
 PLU# ~  
 Item#  
 Name Find

[ Additional Commodity Name ]  
 PLU No 2  
 Name 2 kookgwang  
 Name 3 korea

Add  
 Copy  
 Delete

| A                                   | Dept | PLU No | Type | Item Code | Comm. Name(1) | (2)     | (3)   | Origin       | Unit Price | Count | Sell by | Cook by | Group | Tare |
|-------------------------------------|------|--------|------|-----------|---------------|---------|-------|--------------|------------|-------|---------|---------|-------|------|
| <input checked="" type="checkbox"/> | 01   | 000001 | W    | 0         | Apple         | kook... | korea | Korea, So... | 1.00       | X     | 0       | 0       | 1     | 0    |
| <input type="checkbox"/>            | 01   | 000002 | W    | 0         | Apple         | kook... | korea | Korea, So... | 1.00       | X     | 0       | 0       | 1     | 0    |

### (3) PLU Delete

[ Find ]

Dept # ALL

PLU#  ~

Item#

Name  Find

[ Additional Commodity Name ]

PLU No 2

Name 2 kookgwang

Name 3 korea

Add

Copy

Delete

| A                                   | Dept | PLU No | Type | Item Code | Comm. Name(1) | (2)     | (3)   | Origin       | Unit Price | Count | Sell by | Cook by | Group | Tare |
|-------------------------------------|------|--------|------|-----------|---------------|---------|-------|--------------|------------|-------|---------|---------|-------|------|
| <input checked="" type="checkbox"/> | 01   | 000001 | W    | 0         | Apple         | kook... | korea | Korea, So... | 1.00       | X     | 0       | 0       | 1     | 0    |
| <input checked="" type="checkbox"/> | 01   | 000002 | W    | 0         |               |         |       |              |            | X     | 0       | 0       | 1     | 0    |

CAS x

? Delete all?

To delete a PLU, check each check box that you wish to erase and then click Delete button.  
 If you want to delete all PLUs, click A and then click Delete button. You will see the "Delete all?"  
 Message as above. Click Y to erase. To cancel it, click Cancel button.

## 6. Configuration Menu

Click Config icon, you will see the screen as below.

### Configuration

[ Network Type ]

Scale Master(RS-232C)
  PC Master(TCP/IP)

PLU Auto Download
 RS-232C

[ Messenger IP Address ]

IP Address 10 . 10 . 0 . 192

Port No 2004

Manager Options

Save

[ Scale IP Address ]

| Scale # | IP Address | Subnet Mask | Gateway | Port # | Scale Assignment |
|---------|------------|-------------|---------|--------|------------------|
| 01      |            |             |         |        | Not Assigned     |
| 02      |            |             |         |        | vegetables       |
| 03      |            |             |         |        | vegetables       |
| 04      |            |             |         |        | fishes           |
| 05      |            |             |         |        | manufacture food |
| 06      |            |             |         |        | vegetables       |
| 07      |            |             |         |        | Not Assigned     |
| 08      |            |             |         |        | Not Assigned     |
| 09      |            |             |         |        | Not Assigned     |
| 10      |            |             |         |        | Not Assigned     |
| 11      |            |             |         |        | Not Assigned     |
| 12      |            |             |         |        | Not Assigned     |
| 13      |            |             |         |        | Not Assigned     |
| 14      |            |             |         |        | Not Assigned     |

Check Scale

You can select Network Type. If you select Scale Master Type for Network Type, you have to set up RS-232C. If you select PC Master Type for Network Type, you have to set Messenger IP Address and Port No. If you click Check Scale button, you can see scale IP address.

To access Manager Options, click Config icon and click Manager Options button.

[ Weight ]

Weight Unit lb

[ Country ]

Country Etc.

[ Price ]

Decimal Point 2

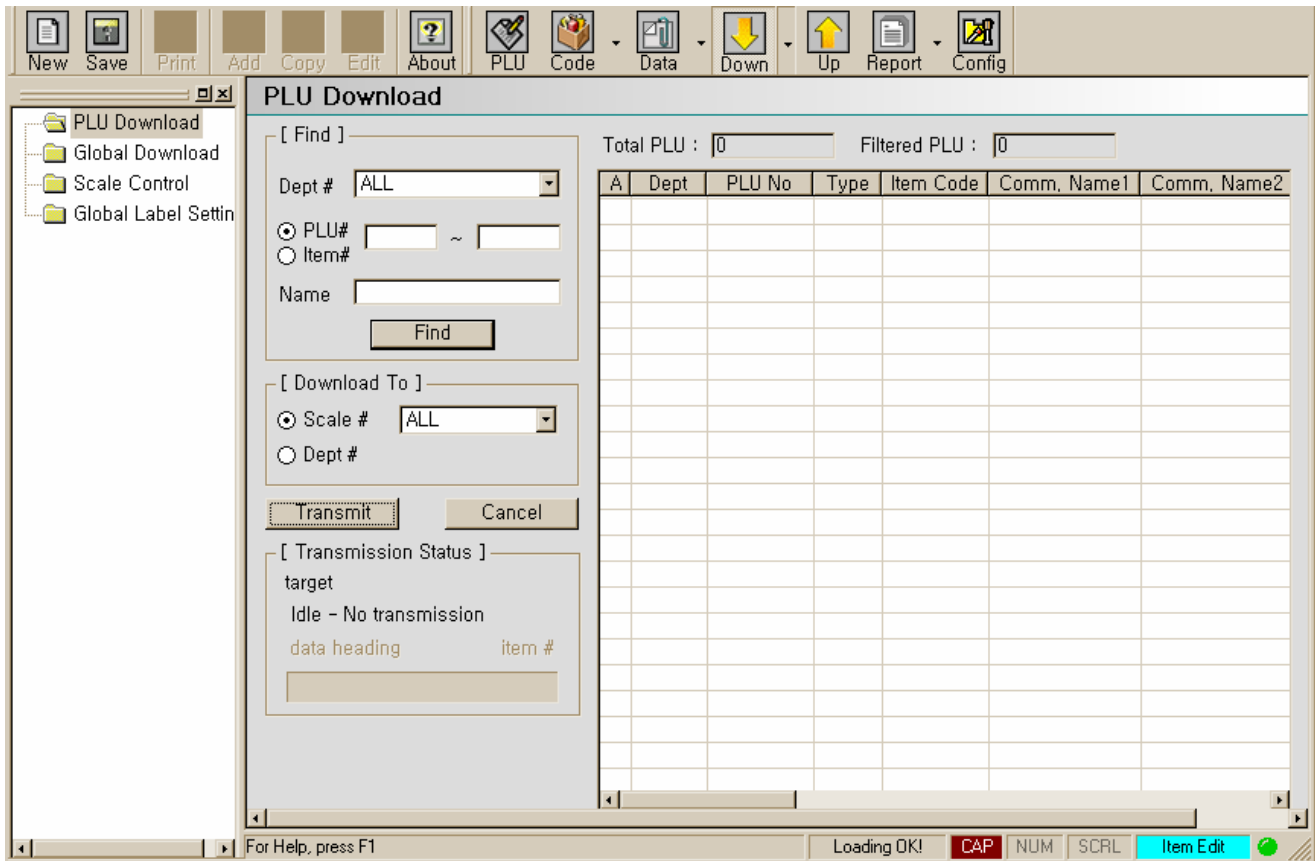
Maximum Digit 6

OK Cancel

You can select weight unit. Once you selected weight unit, all PLUs are set to this weight unit as default. Country option is available to all countries except to USA. At the Price option, setup price decimal point and maximum price digit. Click the OK button and SAVE button. From now, you can use as you've set up.

## 7. Download Menu

You can download PLU data, Global data and so on.





**PLU Download**

[ Find ]

Dept #

PLU#  ~

Item#

Name

Total PLU :       Filtered PLU :

| A                        | Dept | PLU No | Type | Item Code | Comm. Name1     | Co |
|--------------------------|------|--------|------|-----------|-----------------|----|
| <input type="checkbox"/> | 01   | 000001 | W    | 23456     | Apple           |    |
| <input type="checkbox"/> | 01   | 000002 | W    | 23457     | Banana          |    |
| <input type="checkbox"/> | 01   | 000003 | W    | 23458     | Melon           |    |
| <input type="checkbox"/> | 01   | 000004 | W    | 23459     | Water Melon     |    |
| <input type="checkbox"/> | 01   | 000005 | W    | 23460     | Pear            |    |
| <input type="checkbox"/> | 01   | 000006 | W    | 23461     | plum            |    |
| <input type="checkbox"/> | 01   | 000007 | W    | 23462     | strawberry      |    |
| <input type="checkbox"/> | 01   | 000008 | W    | 23463     | grape           |    |
| <input type="checkbox"/> | 01   | 000009 | W    | 23464     | orange          |    |
| <input type="checkbox"/> | 01   | 000010 | W    | 23465     | kiwi            |    |
| <input type="checkbox"/> | 02   | 000001 | W    | 34567     | trout           |    |
| <input type="checkbox"/> | 02   | 000002 | W    | 34568     | tuna            |    |
| <input type="checkbox"/> | 02   | 000003 | W    | 34569     | walleye pollack |    |
| <input type="checkbox"/> | 02   | 000004 | W    | 34570     | thornback       |    |
| <input type="checkbox"/> | 02   | 000005 | W    | 34571     | crayfish        |    |
| <input type="checkbox"/> | 02   | 000006 | W    | 34572     | blue crab       |    |
| <input type="checkbox"/> | 02   | 000007 | W    | 34573     | flattfish       |    |
| <input type="checkbox"/> | 02   | 000008 | W    | 34574     | octopus         |    |
| <input type="checkbox"/> | 02   | 000009 | W    | 34575     | hairtail        |    |
| <input type="checkbox"/> | 02   | 000010 | W    | 34576     | mackerel        |    |
| <input type="checkbox"/> | 03   | 000001 | W    | 45678     | tomato          |    |
| <input type="checkbox"/> | 03   | 000002 | W    | 45679     | shallot         |    |

[ Download To ]

Scale #

Dept #

[ Transmission Status ]

target

Idle - No transmission

data heading      item #

If you click A, all PLUs are selected. You have to select scale or department to transmit data. If you select Scale in Download To box, you can download data to specific scale. If you select Department in Download To box, you can download data to all scales of each department. If scale 1, 2, 3 belong to Department 1 and scale 4,5,6 belong to Department 2, data of department 1 is transmitted to scale 1,2,3 and data of department 2 is transmitted to scale 4,5,6 simultaneously. When ready to transmit data, click Transmit button. As the data is sent, the Transmission Status Box updates the progress meter. When the transmission is done, the status prompt will read Done. If at any point you wish to stop the transmission, click Cancel button.





### 7.3 Global Data Download

To access Global Data Download, click Down icon and click Global Download option.

#### Global Data Download

Global Data

|   |  |
|---|--|
| <input checked="" type="checkbox"/> All                   | <input checked="" type="checkbox"/> Scroll Message on Display                  |
| <input checked="" type="checkbox"/> Store ID              | <input checked="" type="checkbox"/> Advertisement                              |
| <input checked="" type="checkbox"/> Department            | <input checked="" type="checkbox"/> Speed Key <input type="text" value="ALL"/> |
| <input checked="" type="checkbox"/> Scale                 | <input checked="" type="checkbox"/> Country of Origin                          |
| <input checked="" type="checkbox"/> Operator              |  |
| <input checked="" type="checkbox"/> Tax                   |  |
| <input checked="" type="checkbox"/> Sale Message on Label |  |

[ Select Scale ]

Scale #

[ Transmission Status ]

| Idle - No transmission | target |
|------------------------|--------|
| data heading           | item # |
| <input type="text"/>   | 0 %    |

You can click any of the check boxes in order to download the data that you wish to send as above. Select scale number to receive data and click Transmit button. As the data is sent, the Transmission Status Box updates the progress meter. When the transmission is done, the status prompt will read Done. If at any point you wish to stop the transmission, click Cancel button.

## 7.4 Global Label Setting

If the network type is Scale Master(RS-232), You can't use this menu.

To access Global Label Setting, click Down icon and click Global Download option.

**Global Label Setting**

[ Global Label Format ]  
Label   
 Use global label format

[ Global Barcode ]  
Barcode   
 Use global Barcode

[ Add-up TTL Label Format ]  
Label   
 Use global Barcode  
Item Code   
Barcode

[ Printer Font ]  
Basic Font   
 Commodity Name(1) -Korea

[ Misc. PLU Label Format ]  
By Weight   
By Count   
Non-Food   
 Use Misc. PLU label format

Set To Scale  
Set To Scale #

You can setup Global Barcode, Global Label Format, Printer Font, and Misc. PLU Label Format. The Global label Format allows you select a label format that will override each PLU's label format.

## 8. Upload

To access Upload, click Upload icon.

**Upload**

[Select data type/s to receive ]

Globals: ALL

PLU - Dept: ALL

[ Select Scale ]

Scale #

FileName

Receive Cancel

[Transmission Status]

None

data heading item #

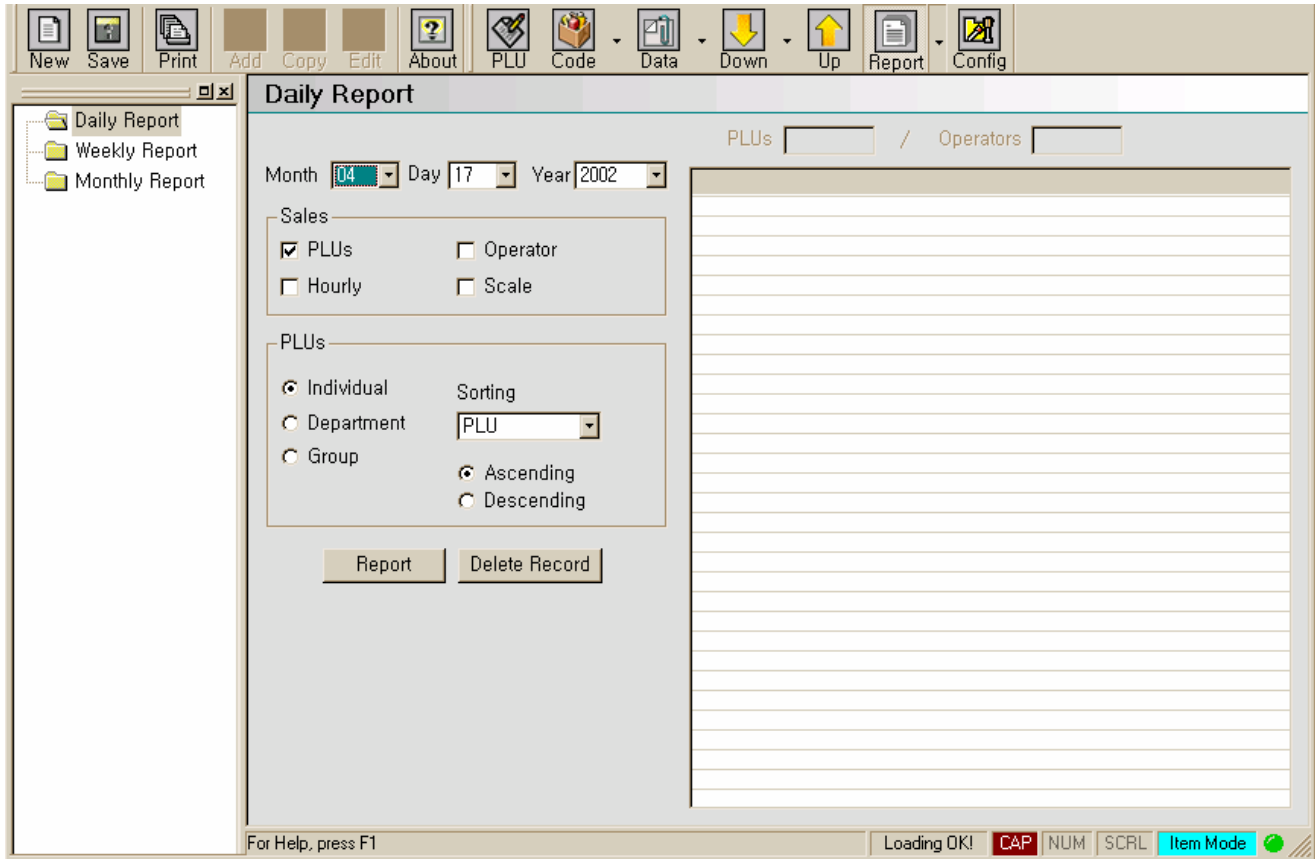
You can receive different types of program data or all program data from a scale to the PC. In the Select data types box you can click any of the check boxes in any combination in order to achieve the correct type of data that you wish to send. When you select PLU you can either specify ALL PLUs or by specific departments. If you select PLU-Dept, you will have file name for PLU automatically. If you want to change this file name, click Filename button and change it. If you do not check any of the check boxes, the scale will not send any data. In the Select Scale box you can select the scale. When ready to receive data, click the receive button. As the data is sent, the Transmission Status Box updates the progress meter, enumerate and indicate the type of data being sent, and give a percentage of completion value to the right of the progress meter.

When the transmission is done, the status prompt will read Done. If at any point you wish to stop the transmission, click the Cancel button.

## 9. Report Menu

If the network type is Scale Master(RS-232), you can't use this menu.

To access Report, click Report icon. LP-II Messenger receives sales data from all scales the moment sales are transacted.



### 9.1 Daily Report

To access Daily Report, click Report icon and Daily Report option. You can select date that you wish to know. Also you can see daily report for PLU sales, Operator sales, Hourly sales, and Scale sales. Select daily report that you wish to check and click Report button.



If you want to print out this sales report, click File -> Print on the menu bar. If you want to preview sales report as below, click File -> Print Preview on the menu bar.

| <b>Daily Sales Report</b>         |           |                |     |              |                |                |
|-----------------------------------|-----------|----------------|-----|--------------|----------------|----------------|
| Date : 2002.01.05 Time : 09:10:51 |           |                |     |              |                |                |
| PLU #                             | Item code | Commodity Name | Aux | Sales Weight | Sales Quantity | Sales Volume   |
| 1                                 | 21456     | Apple          |     | 1.360        | 0.680          | 27.20          |
| 1000000                           |           |                |     | 3.008        | 0.188          | 33.90          |
| 1000001                           |           |                |     | 5            | 1              | 2.07           |
| 1000002                           |           |                |     | 0            | 0              | 1464.20        |
| <b>Grand Total</b>                |           |                |     |              |                | <b>1527.46</b> |
| Plus : 4                          |           |                |     |              |                |                |

### 9.2 Weekly Report

To access Weekly Report, click Report icon and Weekly Report option. You can select date that you wish to know. You can see Weekly reports for PLU sales, Operator sales, Hourly sales, and Scale sales.

**Weekly Report**

PLUs  / Operators

Week  / Month  Day  Year

~

**Sales**

PLUs  Operator  
 Daily  Scale

**PLUs**

Individual  Department  Group      Sorting:

Ascending  Descending

| Plu #       | Item Code | Commodity Na...  | Aux     | Sales |
|-------------|-----------|------------------|---------|-------|
| 1           | 12345     | a Chinese cab... | Chin... |       |
| 2           | 12346     | a radish         | radi... |       |
| 3           | 12347     | an eggplant      | egg...  |       |
| 4           | 12348     | a tomato         | tom...  |       |
| 5           | 12349     | a spinach        | spin... |       |
| Grand Total |           |                  |         |       |
|             |           |                  |         |       |
|             |           |                  |         |       |
|             |           |                  |         |       |
|             |           |                  |         |       |
|             |           |                  |         |       |
|             |           |                  |         |       |
|             |           |                  |         |       |
|             |           |                  |         |       |
|             |           |                  |         |       |
|             |           |                  |         |       |
|             |           |                  |         |       |
|             |           |                  |         |       |
|             |           |                  |         |       |
|             |           |                  |         |       |
|             |           |                  |         |       |
|             |           |                  |         |       |
|             |           |                  |         |       |
|             |           |                  |         |       |
|             |           |                  |         |       |

If you want to print out this sales report, click File -> Print on the menu bar. If you want to preview sales report as below, click File -> Print Preview on the menu bar.

**Weekly Sales Report**

Week : 1st (2001.12.30 - 2002. 1. 5)    Current Date : 2002.01.10 09:00:33

| PLU #       | Item code | Commodity name | Aux | Sales Weight | Sales Quantity | Sales volume |
|-------------|-----------|----------------|-----|--------------|----------------|--------------|
| 1           | 23456     | Apple          |     | 1,360        | 0,680          | 27.20        |
| 1000000     |           |                |     | 3,280        | 0,136          | 34.01        |
| 1000001     |           |                |     | 5            | 2              | 2.07         |
| 1000002     |           |                |     | 0            | 0              | 1552.30      |
| Grand Total |           |                |     |              |                | 1615.58      |
| PLUs : 4    |           |                |     |              |                |              |





## 10. LP-II Messenger Program

If the network type is Scale Master(RS-232), you can't use this Messenger Program.

After installing LP-II Software Package and then turn OFF and ON the PC, LP-II Messenger will start itself. If you click **Scan Scale** button, LP-II Messenger will search scales and get information of them such as scale ID, IP address, sales report and so on. Even though you finish Messenger program and start again, this program stores all information.

The screenshot shows the CAS LP-II Messenger application window. It features several data tables and control panels. Red lines with text labels point to specific parts of the interface:

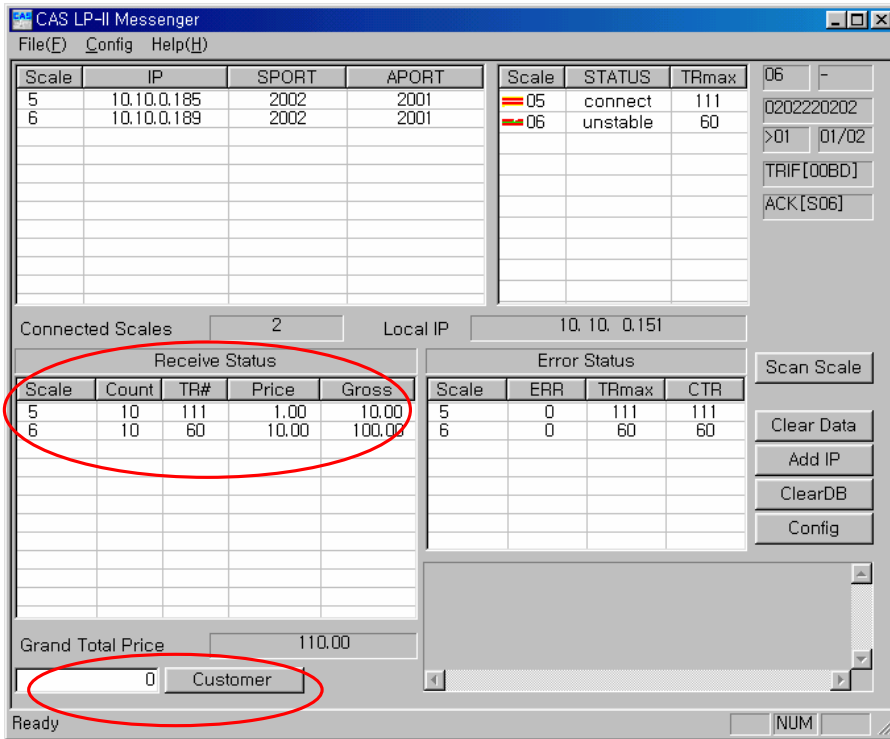
- Scale number, IP Address and Port:** Points to the first table with columns Scale, IP, SPORT, and APORT.
- Scale status and maximum transaction number:** Points to the second table with columns Scale, STATUS, and TRmax.
- Used to search scales:** Points to the 'Scan Scale' button on the right-hand control panel.
- Maximum transaction number, current transaction number and error:** Points to the 'Error Status' table with columns Scale, ERR, TRmax, and CTR.
- Transaction number and price:** Points to the 'Receive Status' table with columns Scale, Count, TR#, Price, and Gross.

Other visible elements include a 'Grand Total Price' field showing 0.00, a 'Customer' field, and a 'NUM' field at the bottom right.



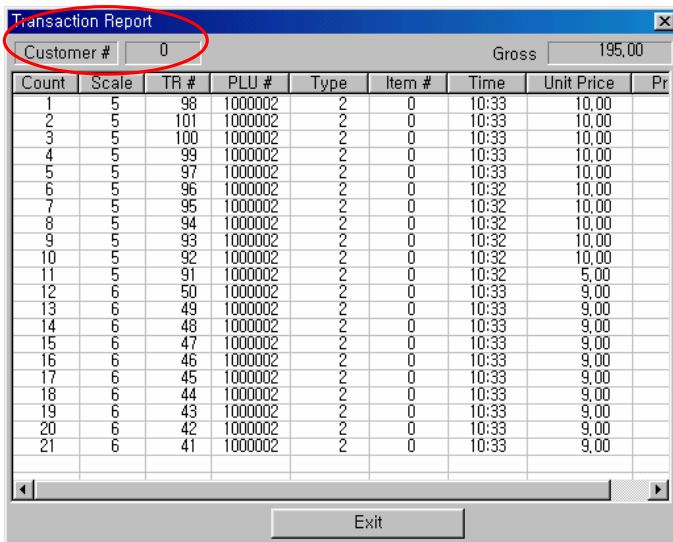
If you install LP-II Software Package, you will have Tray icon of Messenger.

# 10.1 Sales Report



If the clerk sells items, you can see transaction data on the Messenger program and this sales report is stored in Database. If you want to clear this sales report in the Messenger program, click **Clear Data** button. If you want to clear this sales report in database, click **ClearDB** button.

If you want to check specific customer's sales, type customer number and click **Customer** key.



No-Clerk Mode- Customer number :0

Floating Clerk/ Standard Clerk Mode- Type Clerk number

You can see detail information of sales.

If you want to check scale sales, double click scale number on the main screen.

| Count | TR # | PLU #   | Type | Item # | Time  | Unit Price | Price |
|-------|------|---------|------|--------|-------|------------|-------|
| 1     | 201  | 1000002 | 2    | 0      | 14:59 | 12.00      | 12.00 |
| 2     | 203  | 1000002 | 2    | 0      | 14:59 | 12.00      | 12.00 |
| 3     | 202  | 1000002 | 2    | 0      | 14:59 | 12.00      | 12.00 |
| 4     | 200  | 1000002 | 2    | 0      | 14:59 | 12.00      | 12.00 |
| 5     | 199  | 1000002 | 2    | 0      | 14:59 | 12.00      | 12.00 |
| 6     | 198  | 1000002 | 2    | 0      | 14:59 | 10.00      | 10.00 |
| 7     | 197  | 1000002 | 2    | 0      | 14:59 | 10.00      | 10.00 |
| 8     | 196  | 1000002 | 2    | 0      | 14:59 | 10.00      | 10.00 |
| 9     | 195  | 1000002 | 2    | 0      | 14:58 | 10.00      | 10.00 |
| 10    | 194  | 1000002 | 2    | 0      | 14:58 | 10.00      | 10.00 |
| 11    | 193  | 1000002 | 2    | 0      | 14:58 | 7.00       | 7.00  |
| 12    | 192  | 1000002 | 2    | 0      | 14:58 | 7.00       | 7.00  |
| 13    | 191  | 1000002 | 2    | 0      | 14:58 | 7.00       | 7.00  |
| 14    | 190  | 1000002 | 2    | 0      | 14:58 | 7.00       | 7.00  |
| 15    | 189  | 1000002 | 2    | 0      | 14:58 | 7.00       | 7.00  |
| 16    | 188  | 1000002 | 2    | 0      | 14:58 | 50.00      | 50.00 |
| 17    | 187  | 1000002 | 2    | 0      | 14:58 | 50.00      | 50.00 |
| 18    | 186  | 1000002 | 2    | 0      | 14:58 | 20.00      | 20.00 |
| 19    | 185  | 1000002 | 2    | 0      | 14:58 | 20.00      | 20.00 |
| 20    | 184  | 1000002 | 2    | 0      | 14:58 | 20.00      | 20.00 |
| 21    | 183  | 1000002 | 2    | 0      | 14:58 | 20.00      | 20.00 |
| 22    | 182  | 1000002 | 2    | 0      | 14:58 | 20.00      | 20.00 |

You can see detail information of sales.

## 10.2 IP Address

| SID | IP          | SPORT | APORT |
|-----|-------------|-------|-------|
| 5   | 10.10.0.185 | 2002  | 2001  |
| 6   | 10.10.0.189 | 2002  | 2001  |
|     |             |       |       |
|     |             |       |       |
|     |             |       |       |
|     |             |       |       |
|     |             |       |       |
|     |             |       |       |

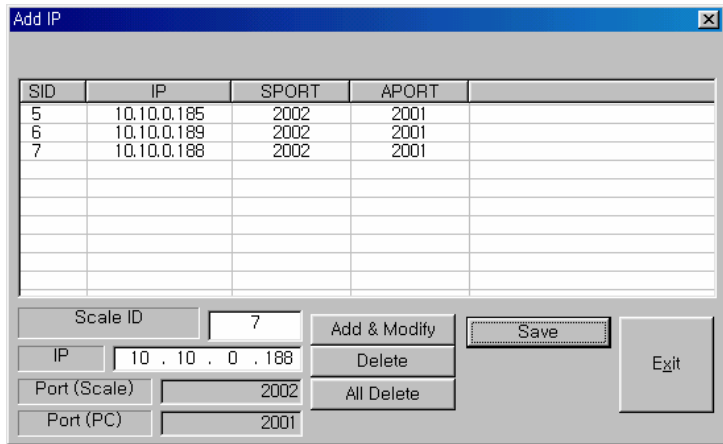
Scale ID: 7

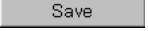
IP: 10 . 10 . 0 . 188

Port (Scale): 2002

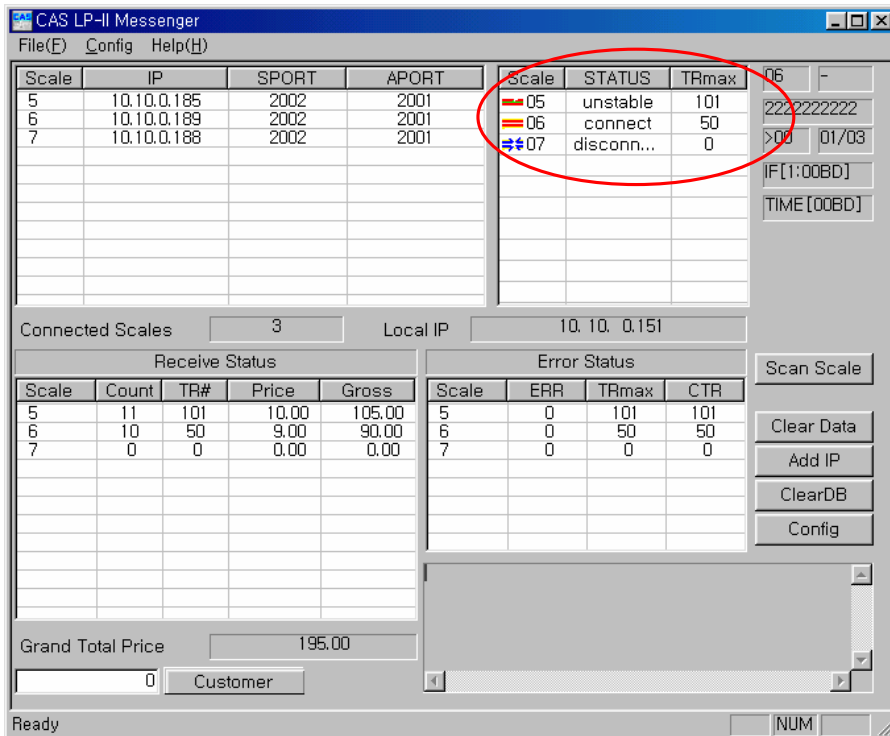
Port (PC): 2001

If you click **Add IP** button, you will see IP Address window as above. You can check scale ID Number and IP Address. You can set IP address of each scale that is not connected, in advance, and the information of scale will be shown on the program automatically when connected. If the Scale ID is 7 and IP address is 10.10.0.188, you have type 7 and 10.10.0.188 and then click **Add & Modify** button.



You will see new IP address on the list as above then click  button. You can also delete IP address of each scale.

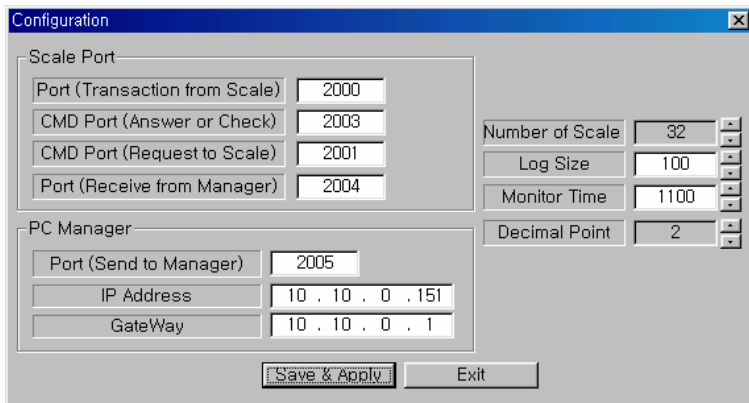
You can check status of scale. If the scale is connected, you will see red line and if the scale is disconnected you will see blue line as below.



Status of scale: Connect, Disconnect, or Unstable.

### 10.3 Configuration

To access Configuration, click **Config** key. You will see Configuration window as below. You can check IP Address, Port and so on.



#### Scale Port

Port(Transaction from Scale) : 2000

This port is used to receive sales data.

CMD Port (Request to Scale): 2001

This port is used to send data to scale.

Port(Receive from Manager) : 2004

This port is used to receive data from Manager.

#### PC manager

Port(Send to Manager) : 2005

This port is used to send data to Manager.

IP Address : 10.10.0.151

IP Address of Manager.

You can see IP Address of current system automatically.

Gateway : 10.10.0.1

Number of Scale : 32

The number of scale that you wish to connect. (1~ 32)

Log Size : 300 (5~ 500)

The number of transaction report that you can check on the Messenger

Monitor Time : 300

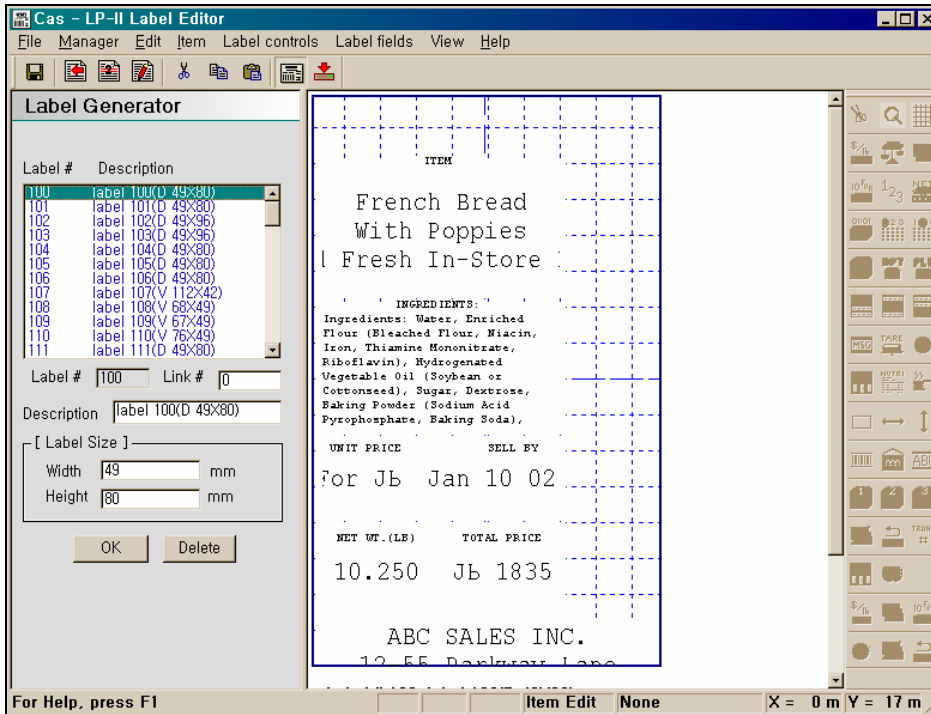
(50~ 500, Unit: msec)

Decimal Point : 2

You have to set up a decimal point same as that of scale. (0 ~ 5)

## 11. LP-II Label Editor

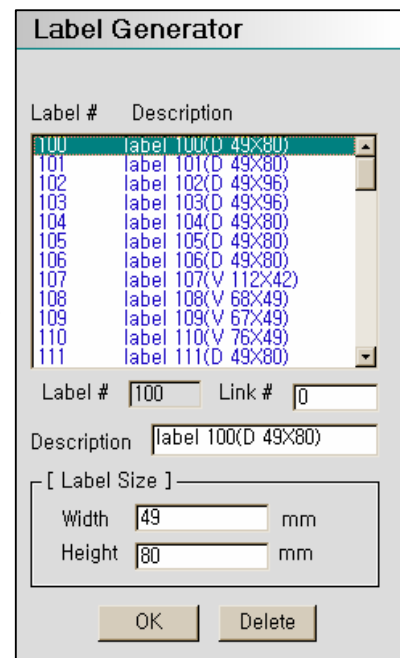
After installing LP-II Software Package start LP-II Label Editor. The LP-II has the ability to let you custom design your own labels. The LP-II comes standard with 90 pre-defined formats and 10 free-formats that you can create from scratch or edit by using this software.



### 11.1 Label Generator

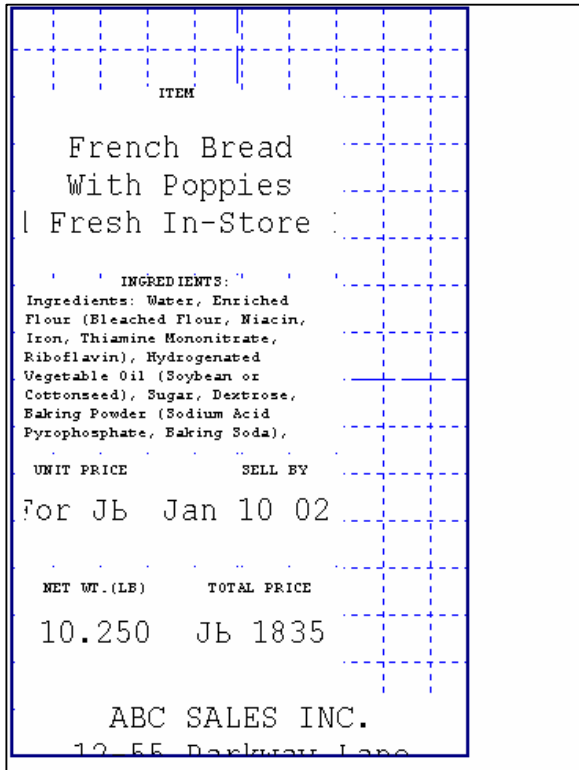
LP-II Label Editor Screen gives you a list of existing label formats with descriptions from which to choose for editing, copying, or creating new formats. You can copy the label, which is input example in program, numbered from 100 to 166, and use it after editing. To the number of from 167 through 999 label can be used arbitrarily, copied, and formed. The Label Size Box has two fields: the Width Field and Height Field. These fields control the width and height in millimeters.

To change from Add to Copy or to Edit modes, click the ADD, COPY, or Edit Icons on the Main Tool Bar or click the Item Option on the Menu Bar and then select Add item Option, Copy Item Option, or the Edit Item Option.



## 11.2 Label viewer

The Label Viewer Screen works concurrently with the Label Generator Screen and the Label Generator Tool Bar. This screen allows you to view the label you are creating or editing. Label Field option has the same function as that of Label Generator Tool Bar. Label Controls option helps you to change special headings.



## 11.3 Label Generator Tool Bar

The Label Generator Tool Bar always appears on the right side of the Label View Screen. This tool bar has the buttons that will allow you to create or modify any labels. Currently, the Label Generator Tool Bar has 44 buttons. If you click any of the Field Buttons in the Label Generator Tool Bar, that button will appear “pressed-down” and the corresponding field on the label in the Label View Screen will be highlighted with a darker frame. Consequently, if you click on a certain field on the label in the Label View Screen, that field will appear highlighted with a darker frame and the corresponding button in the Label Generator Tool Bar will automatically appear “pressed-down.”



To know what these buttons do, simply hold

the mouse pointer over the button and after a few seconds a box will appear over the button explaining what that button does.

The Link Field in the Label Generator window allows you to link up to 5 label formats that will print consecutively from 1 PLU.

## 11.4 Field Specifications

All fields also have different properties. To access these properties left click on the field in the Label View Screen. Once that field is highlighted right-click that same field and the Field Specifications screen will appear. Most fields and Label Generator Tool Bar Buttons have the same Field Specifications Screen. The Field Specifications Screen for all fields except Barcode Fields and StaticText Fields have the following functions: Position controls, Orientation controls, Justification controls, Special Effects controls, Font Size controls, Frame Width controls, and a Headings control. All templates and Static Text Fields have the same controls as above except there is no Headings control. Barcode Fields and all the draw buttons have a different Field Specifications Screen with only: Position controls, Orientation controls, and Frame Width controls.

The 'Field Specifications' dialog box for a 'Sales Message' field contains the following controls:

- [Position (in mm)]**: Left (12), Right (41), Top (9), Bottom (24)
- Font**: 01 - IBM OEM (Default)
- X Font Size**: 2
- Y Font Size**: 2
- Frame Width**: 2
- [Special Effects]**: Bold, Underline, Italic, Strike Through, Reverse (all unchecked)
- [Orientation]**: 0 Normal (selected), 90, 180, 270
- [Justify]**: Center (selected), Left, Right

Buttons: OK, Cancel

Field Specification Screen (For all fields except Box, Line, Graphics and Barcodes.)

The 'BOX DESCRIPTOR' dialog box for a 'UPC BarCode' field contains the following controls:

- [Position (in mm)]**: Left (9), Right (49), Top (46), Bottom (64)
- [Orientation]**: 0 Normal (selected), 90, 180, 270
- [Types]**: Long, Short, 2 Parts (all unchecked)
- Frame Width**: 2

Buttons: OK, Cancel

Field Specification Screen (For Box, Line and Barcodes)



The Heading Field is the small text that appears on the frame surrounding another field similar to the way the words “Orientation” appears on the Orientation Box. Most fields have a Heading field attached to their frames. The Heading field has the same controls as most other fields except of course it doesn’t have a Heading Field attached to it.

The Position Controls allow you to size and position the field directly using mm measurements. The Frame Width Control allows you to determine the thickness of the frame surrounding the current field. The Orientation Controls determine the field’s orientation:




All other controls follow Windows standards. The Background Grid ON/OFF Button on the tool bar toggles the grid on or off on the label in the Label View Screen.

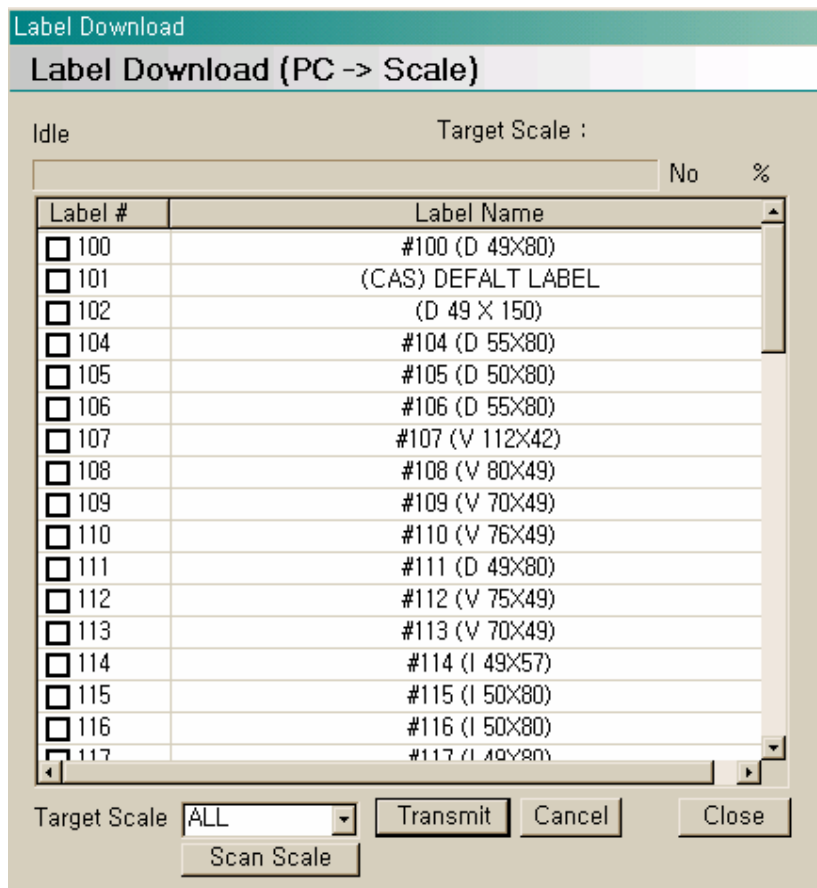
In order to place a Field, Template, or Draw an object on a label, simply click on the appropriate button on the Label Generator Tool Bar. Then point the mouse to the location on the label that you wish to insert the field in and then drag the pointer until you reach the desired size and position. Once you release the mouse button, the field will appear on the label.

If you wish to delete a field, simply highlight it by left-clicking the field and then click on the Cut Button on the tool bar. If you wish to zoom-in on a label click the Magnify Button on the tool bar and the label will appear magnified. There are several levels of magnification that you attain by repeatedly clicking on the Magnify Button. If you click on the Magnify Button once you reach the highest level of magnification, the label will return to the original size.

## 11.5 Label Download

To access Label Download, click  icon or click Manager option and click Label Download option, you will see Lable Download screen as below. You can download label formats to the scale.

You have Scale Master and PC Master transmission type depending on the Network Type of LP-II Manager.



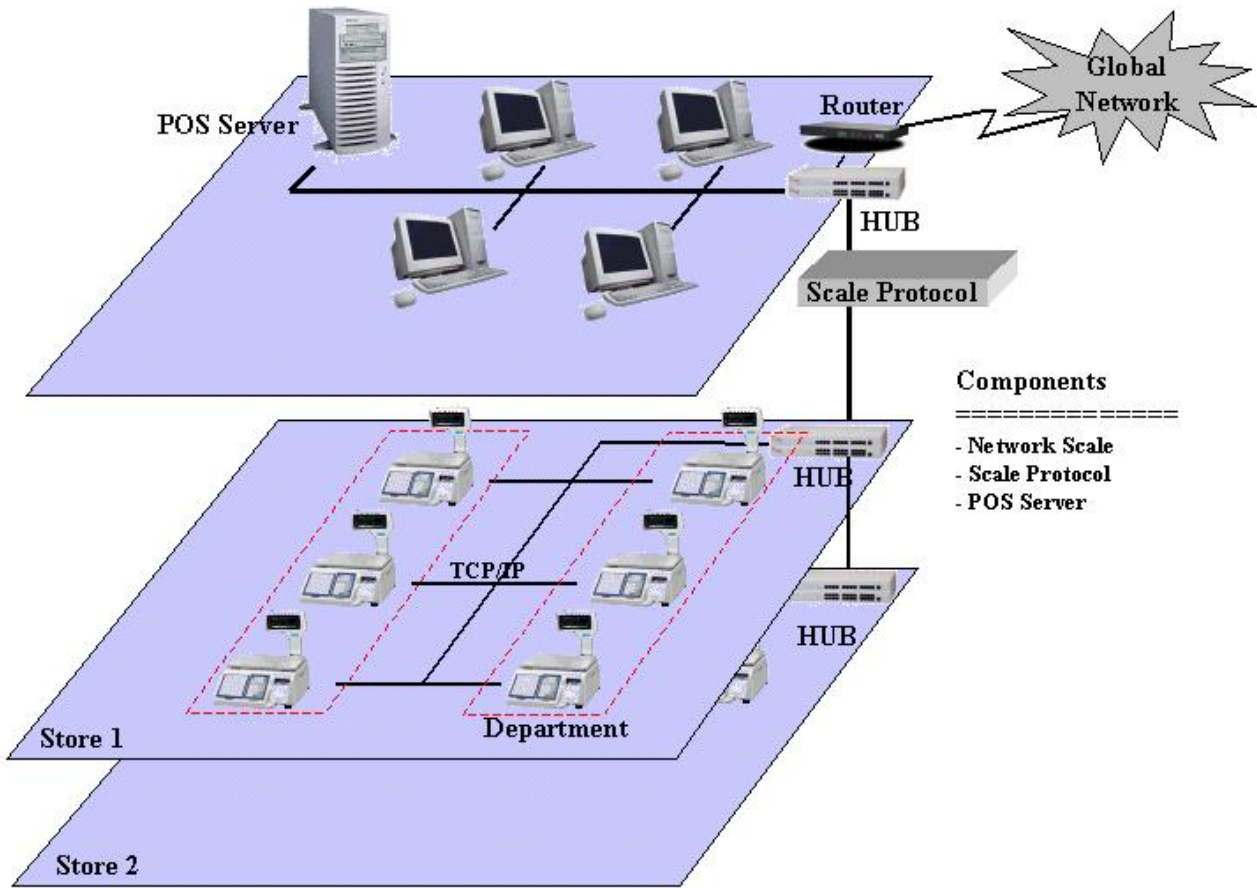
To transmit label, check Label No check box that you wish to send as below. (To check all check boxes, click Label No.) Then select target scale to receive data. If the network is PC master type, click **Scan Scale** button, Target Scale list is updated.

When ready to send data, click **Transmit** button. If at any point you wish to stop the transmission, click **Cancel** button.

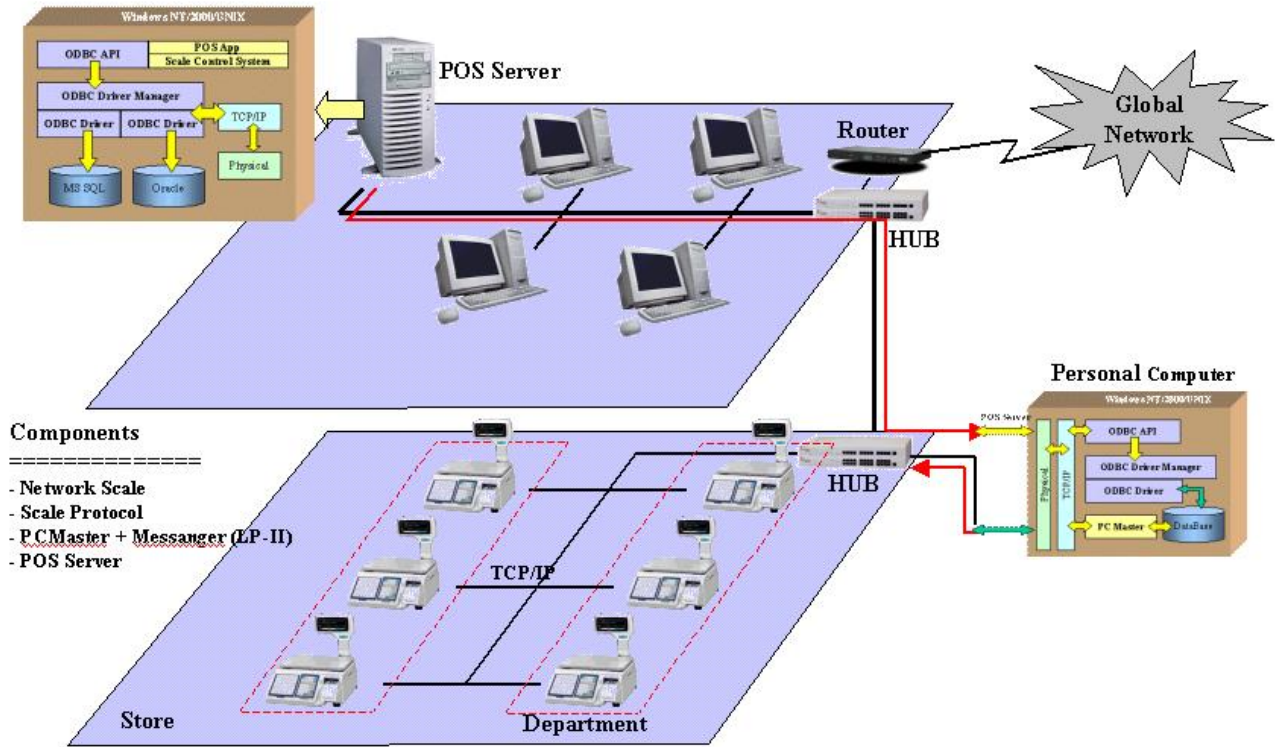
Reference

A. LP-2 Network

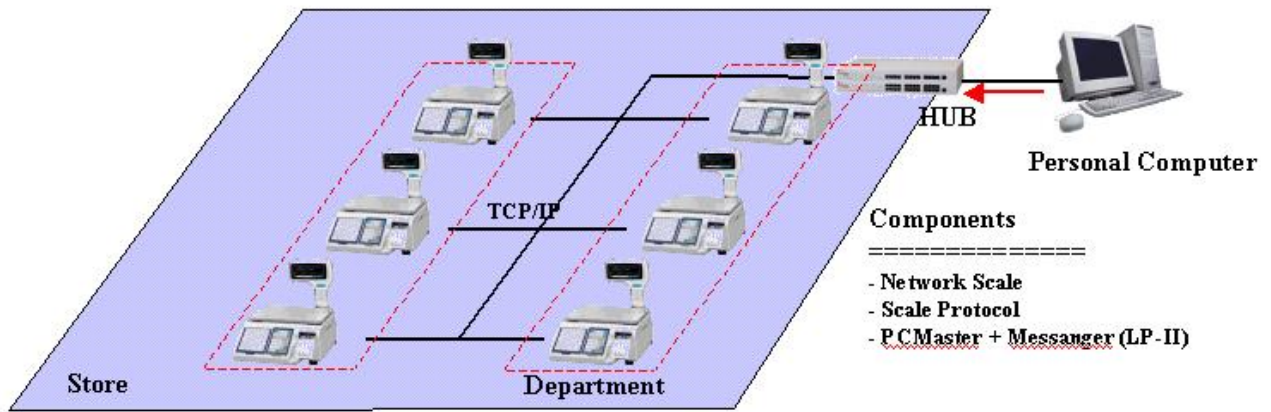
Example 1.



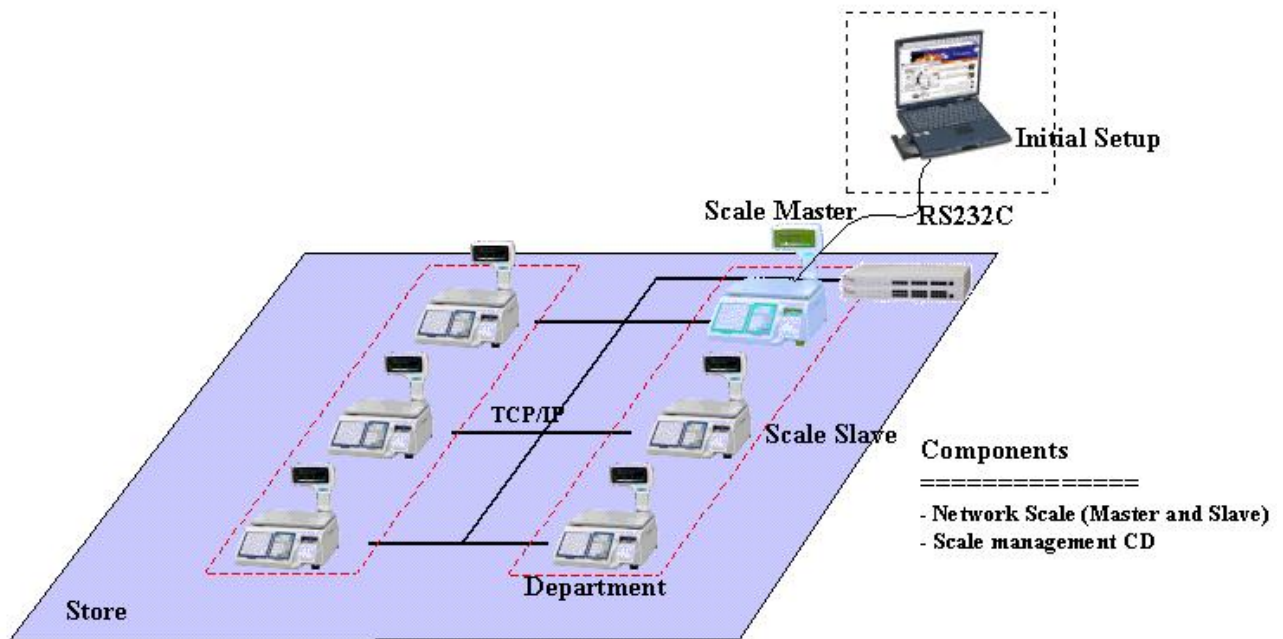
Example 2.



Example 3.

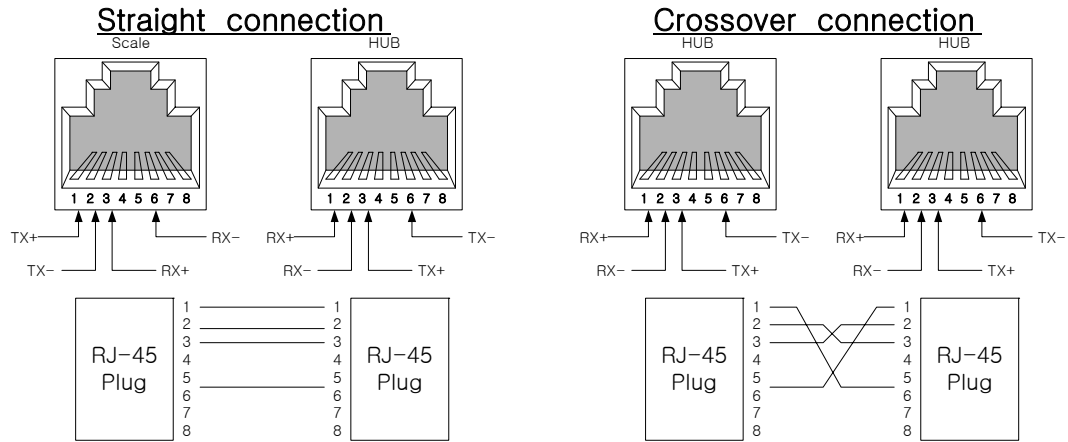
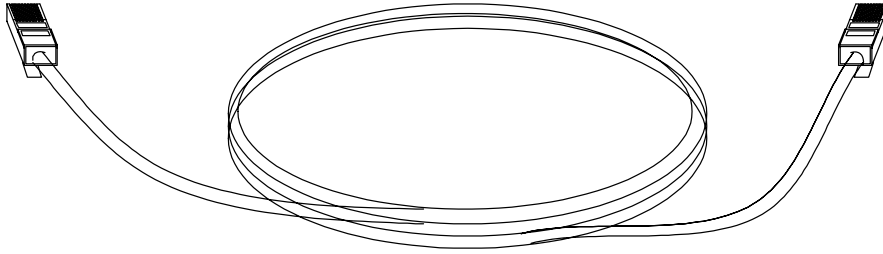


Example 4.



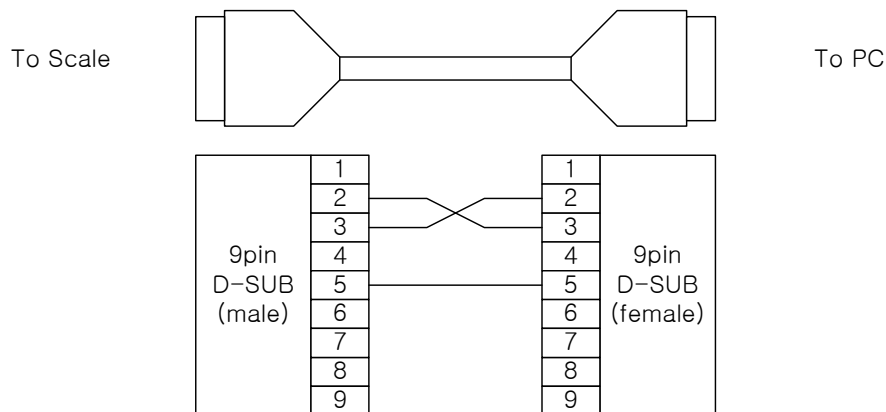
## B. Cable

Ethernet wire – straight cable and crossover cable



NOTE: Twisted pair Category-5 (UTP) cable with RJ45 Plug

RS232C wire



NOTE: Do not use 1,4,6,7,8,9 pin.