

# AVerTV 6.0

---

## User Manual • English

### **DISCLAIMER**

All the screen shots in this documentation are only example images. The images may vary depending on the product and software version. Information presented in this documentation has been carefully checked for reliability; however, no responsibility is assumed for inaccuracies. The information contained in this documentation is subject to change without notice.

### **COPYRIGHT**

© 2007 by AVerMedia TECHNOLOGIES, Inc. All rights reserved. No part of this publication may be reproduced, transmitted, transcribed, stored in a retrieval system, or translated into any language in any form by any means without the written permission of AVerMedia TECHNOLOGIES, Inc.

# Table of Contents

<b>Chapter 1</b>	<b>Device Introduction.....</b>	<b>1</b>
<b>Chapter 2</b>	<b>AVerTV 6.0 Introduction .....</b>	<b>2</b>
<b>Chapter 3</b>	<b>Introducing the AVerTV Application.....</b>	<b>3</b>
3.1	Launching the AVerTV 6.0 Application .....	3
3.2	Running the AVerTV 6.0 application for the first time.....	4
3.2.1	Scanning for Analog Programs.....	4
3.2.2	Scanning for Digital Programs (DVB-T/ATSC) .....	5
3.2.3	Scanning for Digital Satellite Programs (DVB-S).....	6
3.3	Introducing the User Interface .....	8
3.4	The Control Panel .....	9
3.5	Changing TV Monitor Resolution .....	11
3.6	Resizing the TV Monitor Window .....	11
3.7	Changing Display Aspect Ratio.....	11
3.8	Always on Top.....	11
3.9	Setting Windows® Power Options.....	12
3.10	Setting time for turning on the Application.....	13
3.11	Minimize the Application .....	14
<b>Chapter 4</b>	<b>TV.....</b>	<b>15</b>
4.1	Analog TV .....	15
4.1.1	Scanning Channels .....	15
4.1.2	Scanning Channels (For Advanced Users) .....	16
4.1.3	Customize Video Recording Settings.....	17
4.1.4	Fine Tuning Color and Display Quality .....	20
4.1.5	Enhancing the Video Quality.....	21
4.2	Digital TV (DVB-T/ATSC).....	22
4.2.1	Scanning Channels .....	22
4.2.2	Scanning Channels (For Advanced Users) .....	23
4.2.3	Customize Video Recording Settings.....	24
4.2.4	Using the EPG Function .....	24
4.2.5	Fine Tuning Color and Display Quality .....	25
4.2.6	Enabling the Subtitle Function .....	26

4.3	Digital Satellite TV (DVB-S) .....	27
4.3.1	Scanning channels (Importing a Frequency Table) .....	27
4.3.2	Scanning channels (Adding Frequencies Manually) .....	29
4.3.3	Editing or Removing Frequencies .....	30
4.3.4	Scanning Single or Range Frequency (For Advanced Users).....	30
4.3.5	Customize Video Recording Settings .....	31
4.3.6	Using the EPG Function .....	31
4.3.7	Fine tuning Color and Display Quality .....	32
4.4	Adding and Deleting Channel Groups.....	33
4.5	Selecting a TV/ Digital Radio Channel .....	34
4.6	Adjusting Volume.....	34
4.7	Specifying a Channel Name or Description .....	35
4.8	Modifying a program list name .....	35
4.9	Removing Unwanted Channels .....	36
4.10	Using the OverScan Function .....	37
4.11	16-Channel Preview.....	38
4.12	Changing the OSD Attributes .....	39
4.13	Changing Signal Source .....	39
4.14	Sound Controlling (Optional) .....	40
<b>Chapter 5</b>	<b>FM Radio (Optional) .....</b>	<b>41</b>
5.1	FM Radio Controls .....	41
5.2	How to Auto Scan FM Radio Channels.....	42
5.3	Manually Scanning Specific FM Channels .....	42
5.4	Selecting a Channel .....	43
5.5	Skipping Unwanted Channels.....	43
5.6	Adding a Radio Frequency .....	43
5.7	Modifying a Channel Name.....	44
5.8	Adding and Deleting Channel Groups.....	44
5.9	Customizing Audio Recording Settings .....	44
<b>Chapter 6</b>	<b>TimeShift.....</b>	<b>46</b>
6.1	TimeShift Controls .....	46
6.2	Customizing TimeShift Settings.....	47
6.3	Using the TimeShift Function .....	48

---

<b>Chapter 7 PVR.....</b>	<b>49</b>
7.1 PVR Controls.....	49
7.2 Recording Settings.....	50
7.3 Using the Recording Function .....	50
7.4 Playing the Recorded Programs.....	50
7.5 Picture-in-Picture Display .....	51
<b>Chapter 8 Image Capture .....</b>	<b>52</b>
8.1 Before Capturing .....	52
8.2 Capturing a TV/ Video Image .....	52
8.3 Multiple Image Sequence Capture.....	54
<b>Chapter 9 Teletext / MHEG-5.....</b>	<b>55</b>
9.1 MHEG-5 Support (UK Digital Teletext Service).....	55
9.2 Teletext .....	56
9.2.1 Customize the Display Mode.....	56
9.2.2 Overview .....	57
9.2.3 Toolbar Buttons.....	58
9.2.4 LED Lamp .....	58
9.2.5 Using Teletext .....	59
<b>Chapter 10 Scheduler.....</b>	<b>61</b>
10.1 Schedule Management.....	61
10.2 Adding Schedules .....	62
<b>Chapter 11 Hot Keys.....</b>	<b>64</b>
<b>Chapter 12 Customer Service.....</b>	<b>65</b>

# Chapter 1 Device Introduction

Thanks for purchasing AVerMedia's product. The table below lists an overview of the product you purchased. From this table, you can quickly learn about your product features and know which chapter you need to read. Please do read this table before using AVerTV 6 application.

Product Name	AVerTV GO 007 FM Plus
Model No.	M15C
TV System	<input type="checkbox"/> Digital TV ( <input type="checkbox"/> DVB-T <input type="checkbox"/> ATSC <input type="checkbox"/> DVB-S) <input checked="" type="checkbox"/> Analog TV ( <input checked="" type="checkbox"/> NTSC <input checked="" type="checkbox"/> PAL <input checked="" type="checkbox"/> SECAM)
Audio Mode	<input checked="" type="checkbox"/> Stereo <input checked="" type="checkbox"/> Mono <input checked="" type="checkbox"/> SAP
FM Radio	<input checked="" type="checkbox"/> Support <input type="checkbox"/> Not Support
External Signal Source	<input checked="" type="checkbox"/> S-Video <input type="checkbox"/> Composite
Others	<input checked="" type="checkbox"/> Teletext <input type="checkbox"/> MHEG-5 <input type="checkbox"/> EPG <input checked="" type="checkbox"/> iEPG <input checked="" type="checkbox"/> Closed Caption <input type="checkbox"/> Digital Subtitle
Reference Chapter	<input checked="" type="checkbox"/> Chapter 1 <input checked="" type="checkbox"/> Chapter 2 <input checked="" type="checkbox"/> Chapter 3 ( <input checked="" type="checkbox"/> 3.1-3.2.1 <input checked="" type="checkbox"/> 3.3-3.11) <input checked="" type="checkbox"/> Chapter 4 ( <input checked="" type="checkbox"/> 4.1 <input checked="" type="checkbox"/> 4.4-4.14) <input checked="" type="checkbox"/> Chapter 5 <input checked="" type="checkbox"/> Chapter 6 <input checked="" type="checkbox"/> Chapter 7 <input checked="" type="checkbox"/> Chapter 8 <input checked="" type="checkbox"/> Chapter 9 ( <input checked="" type="checkbox"/> 9.2) <input checked="" type="checkbox"/> Chapter 10 <input checked="" type="checkbox"/> Chapter 11 <input checked="" type="checkbox"/> Chapter 12
Note	

## **Chapter 2 AVerTV 6.0 Introduction**

Now, with this product, you can watch TV, listen to the radio, record your favorite programs and enjoy other features on your PC. Turn your computer system into a real multimedia entertainment center.

You'll never miss your favorite ball games, soaps or game shows anymore because the TimeShift function performs background recording of a TV program. This means you can return and watch from the part of the program where you left off.

To enjoy high quality TV or radio programs, *AVerMedia*<sup>®</sup> product is your best choice.

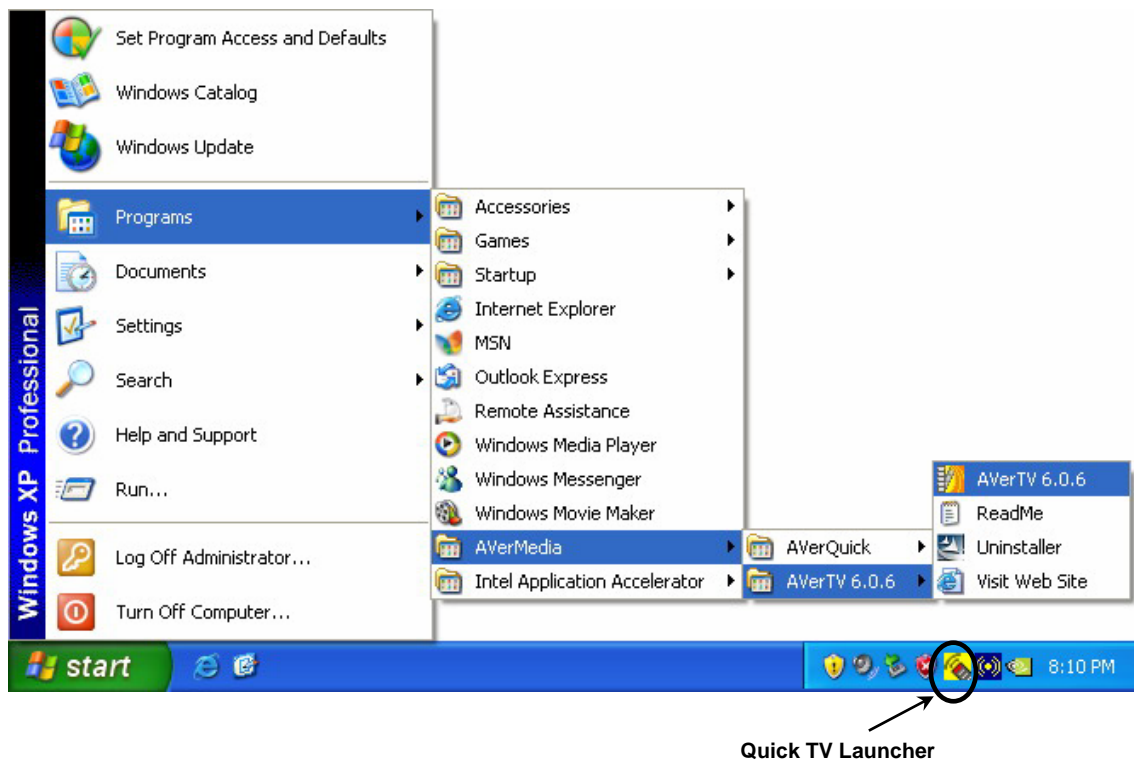
Please be noted that the functions or the remote control mentioned in this manual may vary depending on the product you purchase and the area you live.

# Chapter 3 Introducing the AVerTV Application


The AVerTV 6.0 application allows you to watch TV, listen to the radio, record programs, and capture still images while you work on your computer.

## 3.1 Launching the AVerTV 6.0 Application

Run the AVerTV 6.0 application from the Programs menu.



To run the application, click **Start**, point to **Programs**, choose **AVerMedia**, **AVerTV 6.0.6**, and then click **AVerTV 6.0.6**. Another way is to double-click the **AVerTV 6.0.6**

program icon “” on the desktop. Or, you can double-click the **Quick TV** launcher located in the lower right corner of the screen.

☒ **Note:** **Quick TV** launcher is important for both of the remote control and the **Schedule**. If it is not activated, the remote control feature is automatically disabled and the **Schedule** will not perform any preset schedules (if any).

## 3.2 Running the AVerTV 6.0 application for the first time

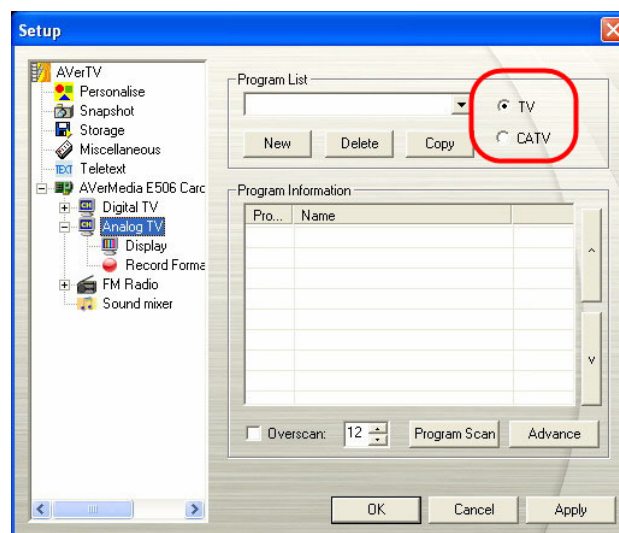
If this is your first time running the application, the *Setup* dialog box will appear to prompt you to scan for channels. (For details, please refer to the section *Scanning Channels*).

### 3.2.1 Scanning for Analog Programs

1. Select **Analog TV** on the left pane of the *Setup* dialog box.

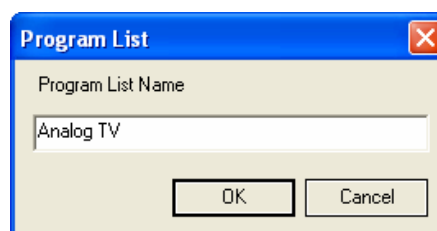
☒ **Note:** Before choosing the signal input, please make sure that your country/region is correct. For more information, please refer to *“Scanning Channels” in Chapter 4*.

2. Then you need to select the **TV** option to search only for air channels, or select **CATV** to scan for cable channels if your choice is “Analog TV” in step 1.



(This picture is only for reference.)

3. Click **New** and the *Program List* dialog box will appear. Type in the desirable name and click **OK**.

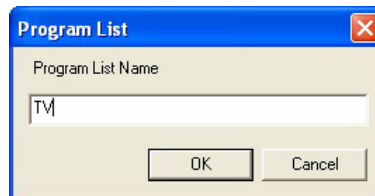


4. Click **Program Scan** for searching for available channels/programs in your area.
5. After scanning, the active TV channels will be listed inside the box. Click **Apply** to save the scanned channels.
6. To exit the current dialog box, click **OK**.



### 3.2.2 Scanning for Digital Programs (DVB-T/ATSC)

1. Select **Digital TV** on the left pane of the *Setup* dialog box.
2. Click **New** and the *Program List* dialog box will appear. Type in the desirable name and click **OK**.



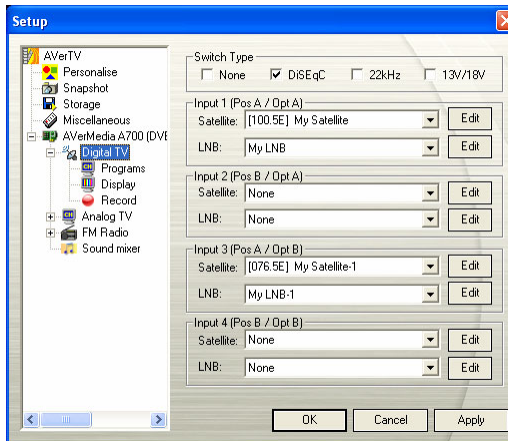
3. Click **Program Scan** for searching for available channels/programs in your area.
4. After scanning, the active TV channels will be listed inside the box. Click **Apply** to save the scanned channels.
5. To exit the current dialog box, click **OK**.

☒ **Note:**

1. This car only supports DVB-T Radio Broadcasts, not the Digital Audio Broadcast system
2. When scanning digital signals and if your country broadcasts logical channel data, the scanned channel will be allocated based on the assigned logical channel number.

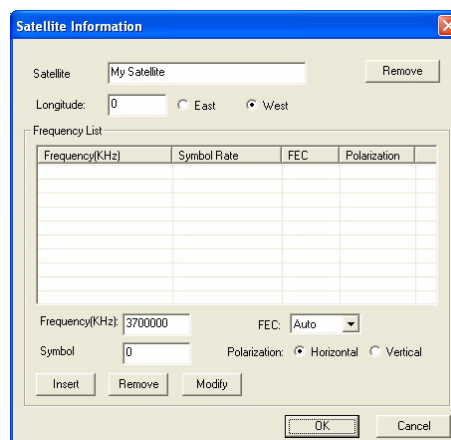
### 3.2.3 Scanning for Digital Satellite Programs (DVB-S)

1. Select **Digital TV** on the left pane of the *Setup* dialog box.
2. Choose the switch type that is used by your satellite system.



(This picture is only for reference.)

3. From the **Satellite** drop-down list under **Input 1**, choose **Custom...** if this input port DOES receive any satellite signals. Otherwise, choose **None**.
4. Click **Edit** to configure the satellite information.
5. In the *Satellite Information* dialog box, type in the satellite's name in the **Satellite** box.



6. Specify the frequencies that you want to scan for available satellite programs.

There are two ways to do this:

- Import the existing frequency data: refer to the section [4.3.1 Scanning Channels \(Importing a Frequency Table\)](#) for details.
- Manually add frequencies: refer to [4.3.2 Scanning Channels \(Adding Frequencies Manually\)](#) for details. If you add frequencies manually, please make sure you specify the correct longitude data.

7. Click **OK** to exit the *Satellite Information* dialog box.
8. From the LNB drop-down list, choose the appropriate setting.
  - **None:** If you do not use any LNB device, choose this option.

- **Universal Ku Band LNB:** Choose this option if your LNB device is this type.
  - **Custom:** When you choose this option, click **Edit** to configure your own LNB information, such as specifying an LNB name, its frequency type, input range, etc. For related data, refer to the documentation that comes with your LNB device.
9. Repeat steps 1 to 8 if you need to configure **Input 2**, **Input 3**, etc. Then click **Apply** to save the settings.
  10. Select **Programs** under the **Digital TV** icon on the left pane, and click **Program Scan** to start the scanning process.
  11. Click **Apply** to save the scanning results.


### 3.3 Introducing the User Interface

The **TV monitor** allows you to watch live TV or video.

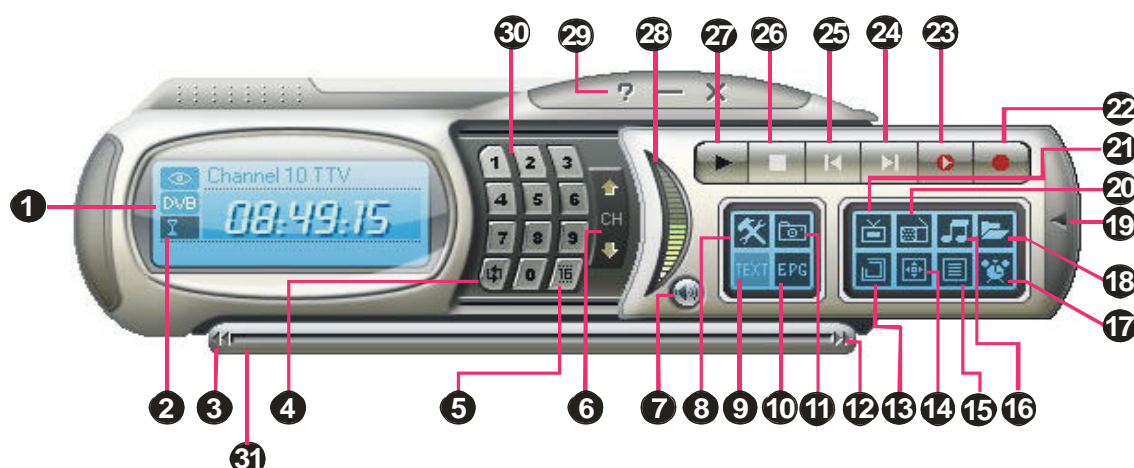


1	Panel On / Off	8	Channel Up/Down
2	Playback Seek Slider	9	Resize Window
3	Play / Pause	10	Show / Hide Video Frame
4	Stop	11	Minimize
5	TimeShift	12	Full Screen
6	Record	13	Exit
7	Volume		

The **Control Panel** provides button controls for selecting channels, adjusting volume, capturing images, and more. It has a panel display that shows the current channel number and channel name.

To display or hide the **Control Panel**, click the button  located in the lower left corner of the TV Monitor.

### 3.4 The Control Panel



(This picture is only for reference.)

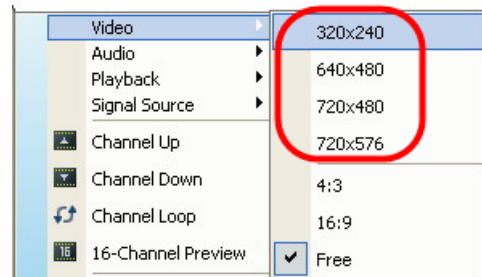
The table below describes functions of the buttons on the Control Panel.

	BUTTON	FUNCTION
1	Signal Status / Enable or disable Repeat Play	TV/Radio mode: Display the current signal status. Playback mode: Right click and enable the Repeat function. The system will continuously playback the files in the playlist.
2	Signal Strength	Display signal strength.
3	Backward	Move backwards in intervals.
4	Channel Loop	Return to previously accessed channel.
5	16-Channel Preview	Display 16 consecutive TV channels on the TV Monitor window.
6	Channel Up/ Down	Go to the next upper or lower active channel.
7	Mute	Turn off the sound.
8	Setup	Allows you to: * Scan channels. * Set the Windows power options. * Configure snapshot settings. * Customize recording settings. * Customize the TimeShift function.
9	Teletext	View Teletext/MHEG-5/Closed Caption information
10	EPG	View EPG information.
11	Snapshot	Capture a single image or a sequence of images.
12	Forward	Skip forward in intervals.
13	Always on Top	Make the TV monitor float over the top of other program windows.
14	Full Screen	Show TV/Video programs in full screen.
15	Program List	Display the program list.
16	Audio Mode	Switch between available audio modes.
17	Schedule	Display Schedule dialog box.
18	Play List	Create a playlist of video files to playback.

19	Show/ Hide Numeric Panel	Toggle between displaying or hiding the Numeric Panel.
20	Radio Source	Switch to radio mode. (FM or Digital Radio)
21	Change Video Source	Switch between available video sources.
22	Record	Record the current program.
23	TimeShift / Pause	Performs background recording of the live program. This function lets you view the recorded parts, while at the same time, recording is in progress. / Freeze the TimeShift temporarily.
24	Next File	Play the next file in the playlist.
25	Previous File	Play the previous file in the playlist.
26	Stop	Stop the playback, recording, TimeShift, etc.
27	Play / Pause	Play back recorded video files. / Freeze the playback temporarily.
28	Volume Control	Drag your mouse up/down to increase/decrease the volume level.
29	Help	View User's Manual.
30	Numeric Buttons	Select channels/programs.
31	Playback Seek	Drag the slider tab to move to any part of the recorded TV program.


### 3.5 Changing TV Monitor Resolution

To switch the resolution of the TV monitor, simply right click on the TV monitor. When a pop-up menu appears, point to **Video** and choose an appropriate resolution (320x240, 640x480, 720x480, 720x576).



### 3.6 Resizing the TV Monitor Window

To enlarge or reduce the size of the TV Monitor window, click and drag the lower right edge of the window.

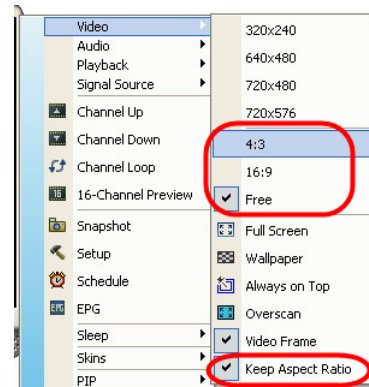
Double-click the TV Monitor window to display it in full screen or click the Full Screen button  on the Control Panel.

When in full screen mode, just double-click anywhere on the screen to revert to the normal TV window size.

### 3.7 Changing Display Aspect Ratio

Aspect ratio indicates the ratio of the width of an image to its height. To switch the aspect ratio of the display, Right click on the TV monitor. When a pop-up menu appears, point to **Video** and choose a desired option.

4:3 and 16:9 is the two most common aspect ratio of home video. You can choose **Free** to adjust the aspect ratio as you want. Or select **Keep Aspect Ratio** to preserve the original width and height of an image.



### 3.8 Always on Top

To make the TV monitor window float over the top of other program windows, right-click on the TV monitor. In the pop-up menu, point to Video and choose Always on Top.

OR,

Click the **Always on Top** button  on the Control Panel.

### 3.9 Setting Windows® Power Options


This option allows you to put your computer in Stand By / Hibernate mode, power off, exit the application or log off from the computer while you are away from the computer.

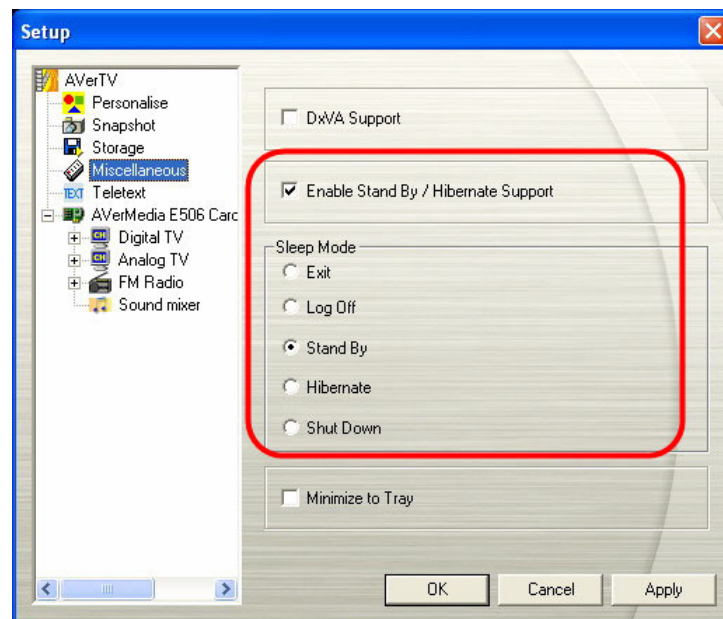
**Note:**

**Stand By:** Stand By is a state in which your monitor and hard disks turn off, so that your computer uses less power.

**Hibernate:** Hibernation is a state in which your computer shuts down to save power but first saves everything in the memory on your hard disk.

Please do the following:

1. First, Click the **Setup** button  and in the *Setup* dialog box, click on the **Miscellaneous** icon on the left pane.
2. By default, the system is set to enable the *Stand By/Hibernation* option. What you have to do is to choose the desired power-saving settings. If your computer has problem with being out of Stand By or Hibernate mode, please clear the *Stand By/Hibernate* option.

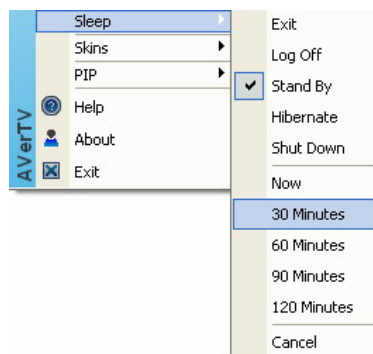


(This picture is only for reference.)

There are two ways to set the time to put the computer into Stand By or Hibernation.

- ◆ If the product you purchase with a remote control, you can press the **Sleep** button repeatedly on the remote control.
- ◆ Or you can right click on the TV monitor, point to Sleep and select the desired mode. Then right click on the TV monitor again, point to Sleep and choose an execution time.





The time setting will be displayed on the TV monitor. For details, please see the description below.

Time setting mode	Description
Sleep 30/60/90/120 Minute(s)	Your computer will go into the selected mode in 30/60/90/120 minutes.
Now	Your computer will go into the selected mode in about 10 seconds.
Channel Name / No.	Your computer will return to original settings.

☒ **Note:** The system will detect if your VGA card supports DXVA. If yes, enable the “DXVA Support” to activate the video acceleration of the VGA card. To watch HDTV, it is strongly recommended to execute “DXVA Support”.




### 3.10 Setting time for turning on the Application

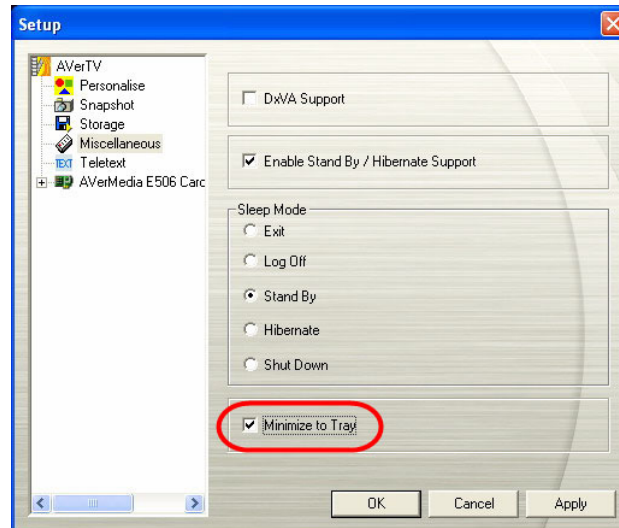
If your product with a remote control, this function allows you to turn on the application at a preset time.

1. Press the **Wake Up** button (the green one) on the remote control.
2. A dialog box will be displayed on the center of the screen.
3. Set the time you want by pressing the **Wake Up** button continuously. (For more information, please refer to the table below.) Then the application will be turned on automatically at the time you want.

	Description
Cancel Wake Up	Disable the <b>Wake Up</b> function.
Wake Up after 30/60/90/120 min(s)	The application will be turned on in 30/60/90/120 minutes.

### 3.11 Minimize the Application

To minimize AVerTV application to the system tray (notification area), click the Setup button  and in the Setup dialog box, click Miscellaneous icon on the left pane. Then Select the Minimize to Tray check box. Otherwise clear the check box to minimize the application to a taskbar button.



(This picture is only for reference.)


# Chapter 4 TV

In this chapter, we will introduce methods to scan programs, select a TV/Radio program, create a group and so on.

## 4.1 Analog TV

### 4.1.1 Scanning Channels

If you haven't done channel scanning when you first run the application, please follow the steps to complete this procedure.

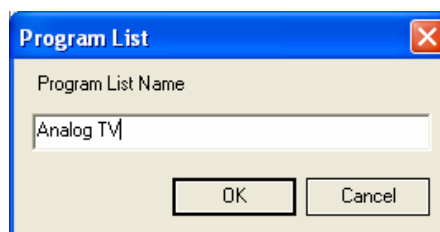
1. Click the **Setup** button  and in the *Setup* dialog box, select an available Avermedia device in the left pane.

☒ **Note:**

Make sure that your Country/Region is correct.

- a. First, select an available Avermedia device in the left pane.
- b. From the Region/Country drop-down list, select your country or region.
- c. Click **Apply** to save the settings.

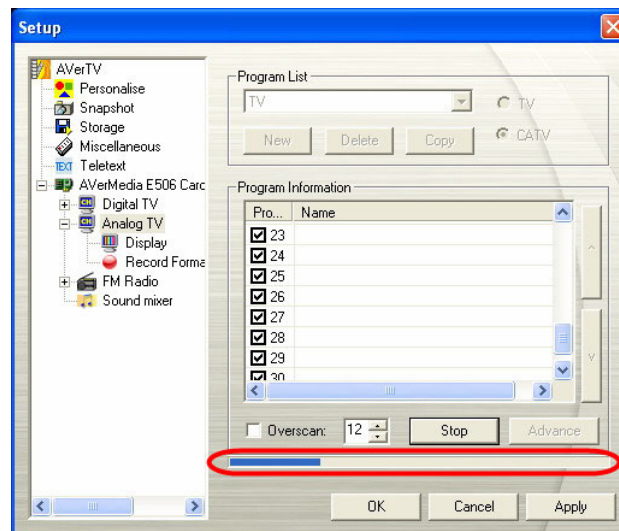
2. Then select **Analog TV**. On this page, choose the **TV** option to search only for air channels or select **CATV** to scan for cable channels.
3. Click **New** and the *Program List* dialog box will appear. Type in the desirable name and click **OK**



4. Then Click **Program Scan** to start the searching process.

The application comes with a default frequency table therefore the application will use this table to search for active channels/programs. If you want to terminate the searching process, just click **Stop**.

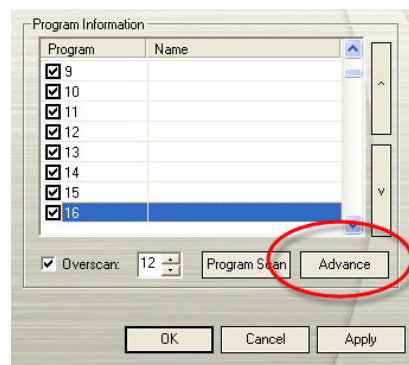
5. You can check the scanning progress from the progress bar. After scanning, the active TV/Radio channels will be listed inside the box. Click **Apply** to save the scanned channels.



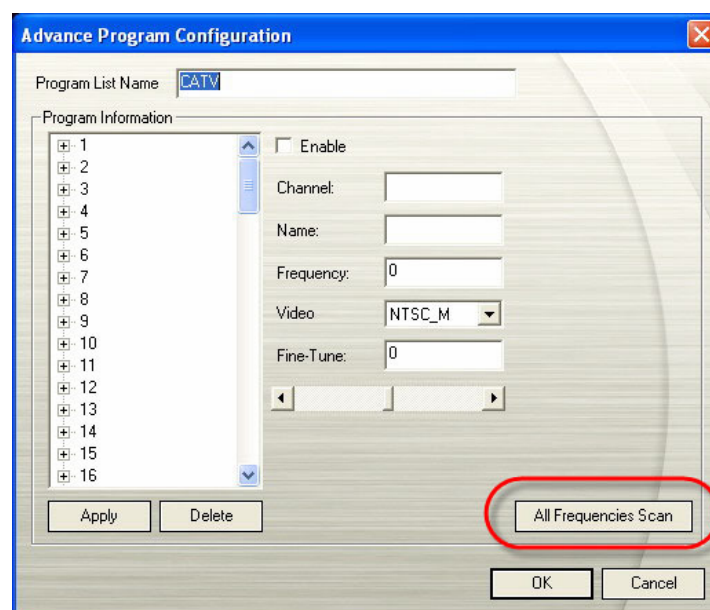
(This picture is only for reference.)

#### 4.1.2 Scanning Channels (For Advanced Users)

1. Click **Advance** located at right-lower corner in the **Programs Information** section. Then the *Advance Program Configuration* dialog box will appear.




2. If you don't want to miss any channels, click **All Frequencies Scan**.

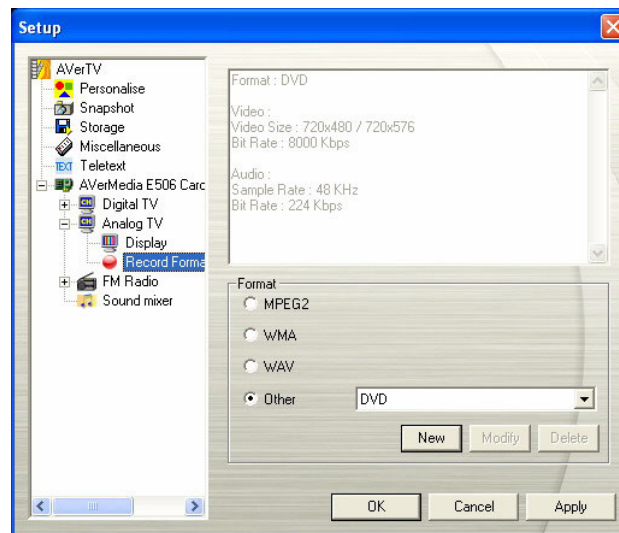


3. When a warning message appears, click **Yes** to continue the procedure or click **No** to abort this operation.
4. After scanning, new active channels/programs will be memorized and listed in the left pane of the dialog box.
5. Click **Apply** to save the scanned channel.

### 4.1.3 Customize Video Recording Settings

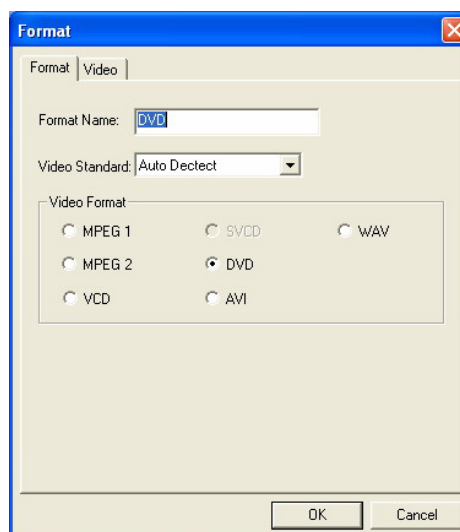
#### --To customize the video recording file format--

1. Click the **Setup** button  and in the *Setup* dialog box, click **Analog TV** icon on the left pane.
2. Select the **Record Format** option.
3. Determine the video file format you wish to use for saving the recorded video file.
4. You can use the default format or select **New** to create your own file format.

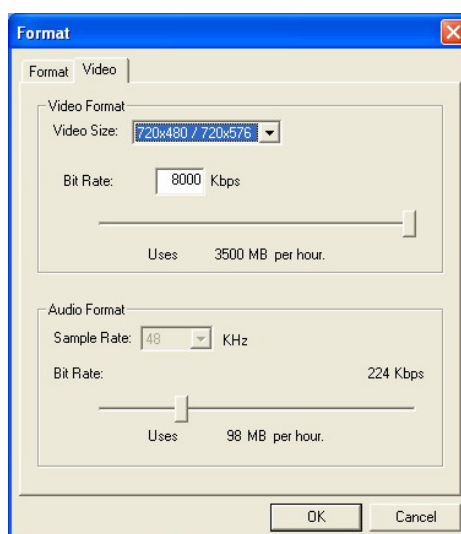


(This picture is only for reference.)

5. Click **New** and the *Format* dialog box appears. In the *Format* tab, select the file format you want and enter the desired name in the text box.



6. In the *Video* tab, you can set the video format and audio format.




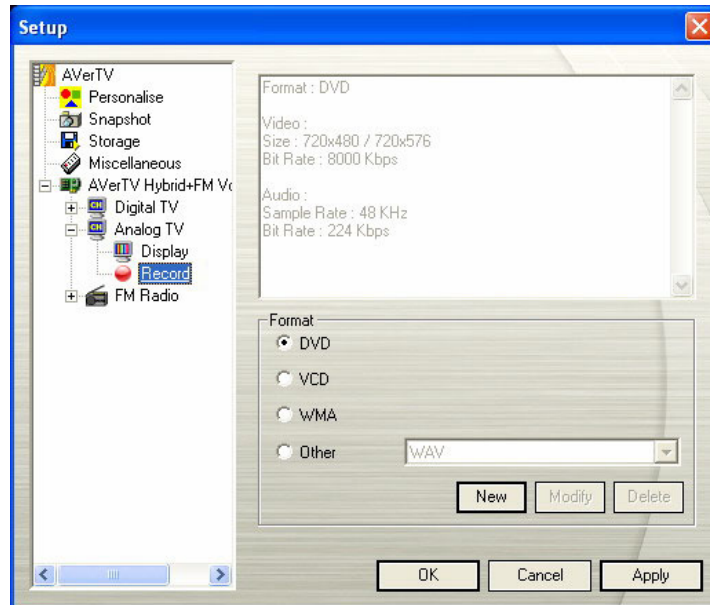
7. If you want to change the settings of your own file format, click **Modify**. Or click **Delete** to remove the unwanted file format that you created.
8. Click **Apply** to save the settings and click **OK** to exit the current dialog box. To abort this operation, click **Cancel**.

**Information:**

File Format	Description
<b>MPEG-1</b>	Choose MPEG-1 format for video files that are intended for CD-ROM playback on a computer or for Internet transmission. MPEG-1 allows file compression and offers VHS quality picture. Just about every system available today can play MPEG-1 and does not need special software or hardware.
<b>MPEG-2</b>	Videos compressed using MPEG-2 have extremely high quality pictures and full CD-quality sound. Choose MPEG-2 format for video files that are intended for DVD-ROM playback on a computer or if you want broadcast quality videos.
<b>VCD</b>	When you choose this format, the recorded video file will be saved in MPEG-1 format that is compliant with VCD standards. Standard VCD frame size and frame rate are 352 x 240 pixels at 29.97 fps for NTSC and 352 x 288 pixels at 25 fps for PAL.
<b>DVD</b>	When you choose this format, the recorded video file will be saved in MPEG-2 format that is compliant with DVD standards. Standard DVD frame size and frame rate are 720 x 480 pixels at 29.97 fps for NTSC and 720 x 576 at 25 fps for PAL.
<b>AVI</b>	AVI is the most common video file format for playback on the computer. It can be saved in uncompressed form if you want high quality video, or compressed using any of the available codecs if you want to minimize the file size.
<b>WMA</b>	Windows Media Audio. An audio compression format, which can offer higher quality than MP3 at the same bit rate.
<b>WAV</b>	A common audio file format for Windows computers. It was created by Microsoft and has become a standard PC audio file format.

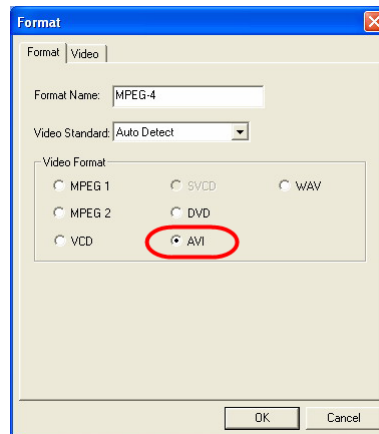
### --To record program in MPEG-4 format--

1. If you want to record program in MPEG-4 format, you need to download codec from the website first. We recommend downloading the DivX codec from [www.divx.com](http://www.divx.com) or XviD codec from [www.xvid.org](http://www.xvid.org). Then install the codec.
2. Next, run the AVerTV 6.0 and click the **Setup** button . In the *Setup* dialog box, click **Analog TV** icon on the left pane.
3. Select the **Record Format** option.

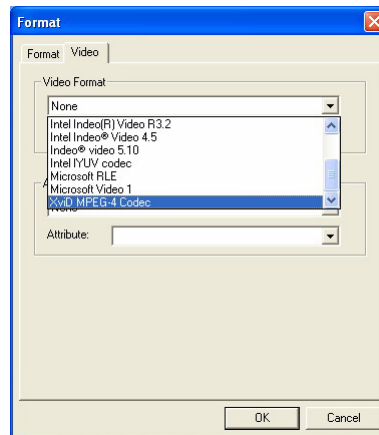


(This picture is only for reference.)

4. When you click **New** and the *Format* dialog box appears. In the *Format* tab, select **AVI** and enter the desired name in the text box.



5. In the *Video* tab, you can choose the desired codec, such as XviD MPEG-4 codec, and click **OK** to confirm your selection.




6. If you want to change the settings of your own file format, click **Modify**. Or click **Delete** to remove the unwanted file format that you created.
7. Click **Apply** to save the settings and click **OK** to exit the current dialog box. To abort this operation, click **Cancel**.

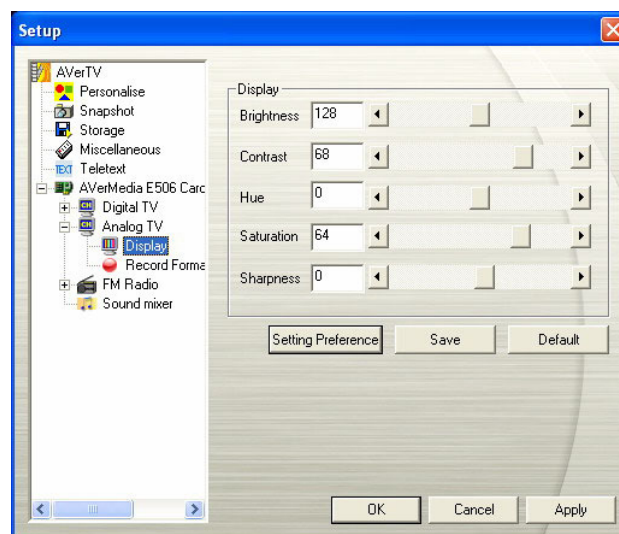
**Note:**

1. To determine the length of recording and to choose a destination folder in which to save the recorded audio, please refer to the section titled Recording Setting in Chapter 6.
2. The codecs are not developed by AVerMedia. Therefore, AVerMedia could not guarantee the function of MPEG-4 recording.

#### 4.1.4 Fine Tuning Color and Display Quality

If the color or picture quality of the TV display needs to be adjusted, please do the following.

1. Click the **Setup** button  and in the *Setup* dialog box, click **Analog TV** icon on the left pane.
2. Select the **Display** option.



(This picture is only for reference.)

3. Then you can adjust the **Brightness**, **Contrast**, **Hue**, **Saturation** and **Sharpness** sliders until you get an accurate color.



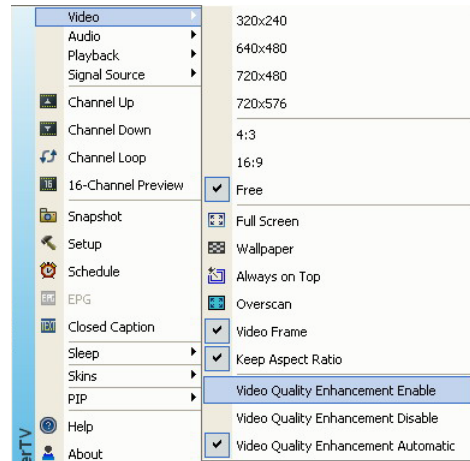
Click **Save** to create your own settings. Next time, you can simply click **Preference Setting** to get your preferred settings.

4. If you want to revert to default settings, please click **Factory Setting**.

#### 4.1.5 Enhancing the Video Quality

This function can reduce noise. Choose an appropriate option listed below.


- Video Quality Enhancement Enable: Activate to improve the video quality.
- Video Quality Enhancement Disable: Disable the video quality enhancement function.
- Video Quality Enhancement Automatic: Automatically adjust video quality depending on the video screen size.



## 4.2 Digital TV (DVB-T/ATSC)

### 4.2.1 Scanning Channels

If you haven't done channel scanning when you first run the application, please follow the steps to complete this procedure.

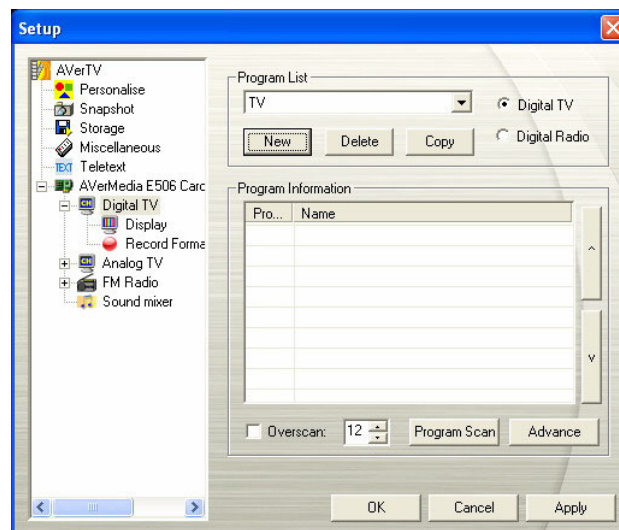
1. Click the **Setup** button  and in the *Setup* dialog box, select an available Avermedia device in the left pane.

**Note:**

Make sure that your Country/Region is correct.

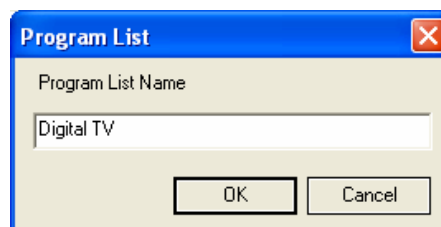
- a. First, select an available Avermedia device in the left pane.
- b. From the Region/Country drop-down list, select your country or region.
- c. Click **Apply** to save the settings.

2. Then select **Digital TV**.



(This picture is only for reference.)

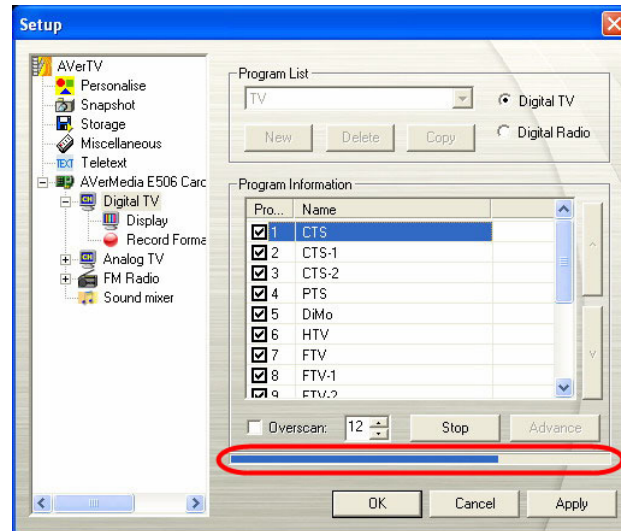
3. Click **New** and the *Program List* dialog box will appear. Type in the desirable name and click **OK**.



4. Then click **Program Scan** to start the searching process.

The application comes with a default frequency table therefore the application will use this table to search for active channels/programs. If you want to terminate the searching process, just click **Stop**.

5. You can check the scanning progress from the progress bar. After scanning, the active TV/Radio channels will be listed inside the box. Click **Apply** to save the scanned channels.

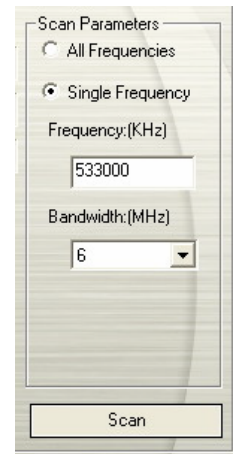


(This picture is only for reference.)

☒ **Note:** All programs automatically classify into two categories (Digital TV and Digital Radio). Select Digital TV to display TV programs; select Digital Radio to display radio programs.

#### 4.2.2 Scanning Channels (For Advanced Users)


1. Click **Advance** located in the lower right corner of the **Program Information** section. Then the *Advance Program Configuration* dialog box will appear.
2. When there are channels missing from the channel memory, select **All Frequencies** or **Single Frequency**.
3. Once you select **Single Frequency**, you need to specify the correct **Frequency**, for example 533000 (KHz), and **Bandwidth**.
4. Then click **Scan**.
5. After scanning, new active channels/programs will be memorized and listed in the left pane of the dialog box.
6. Click **Apply** to save the scanned channels.

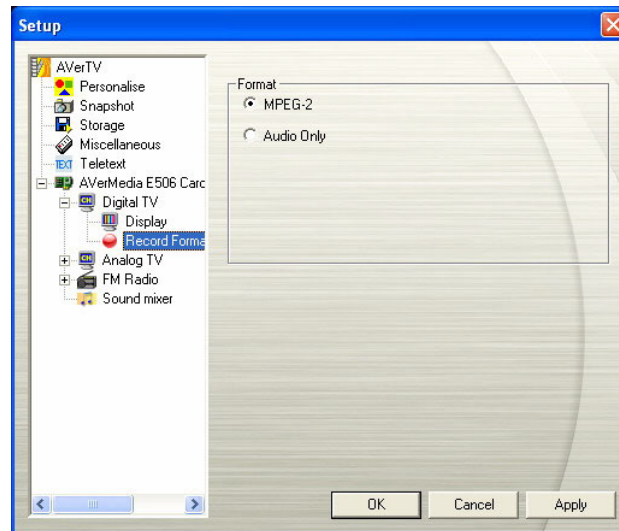


☒ **Note:** All Frequencies Scanning may take you a while. Please be patient.

### 4.2.3 Customize Video Recording Settings


To customize the video recording settings, please do the following.

1. Click the **Setup** button  and in the *Setup* dialog box, click the **Digital TV** icon on the left pane.
2. Select the **Record Format** option.
3. Select recording type. By default, the application is set to record both audio and video in *MPEG II* format. Or you can choose *Audio Only* for sound recording.




(This picture is only for reference.)

4. Click **Apply** to save the settings and click **OK** to exit the current dialog box. To abort this operation, click **Cancel**.

 **Note:** To determine the length of recording and to choose a destination folder in which to save the recorded audio, please refer to the section titled Recording Settings in Chapter 7.

### 4.2.4 Using the EPG Function



Electronic Program Guide (EPG) is a service that allows you to check the next succeeding program schedule and even the program schedules of the whole week. If the EPG service is provided in your region/country, simply click the **EPG** button  to open the *EPG* window.

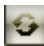
First, select the desired program from the *Program* drop-down list and the *EPG* window will display the schedule for one week. You can also see the related information such as program name, time, and description about the program on the right pane of the window.

In addition, when switching channels, the TV screen can show the current and succeeding program information.



	Description
1	The current program
2	The program will be recorded on the preset time.


Our *EPG* window also allows you to preset a schedule for watching or recording programs. Just select your favorite programs and click Record button  or the Active TV Application button . And the system will execute your command on schedule.

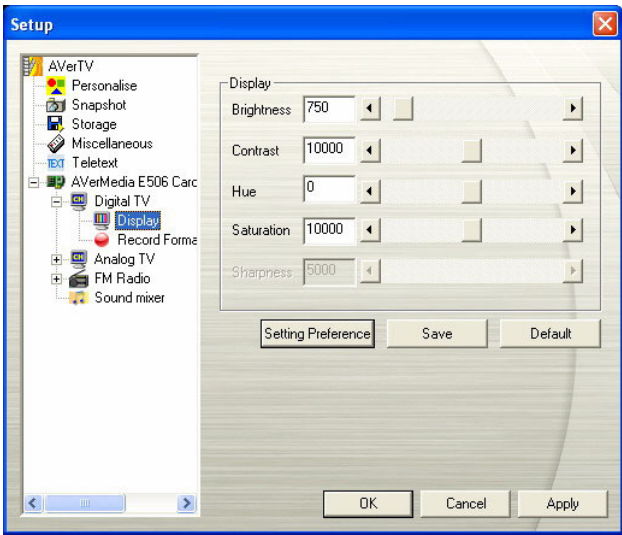
If you want to download the latest program schedule, please click the **Update** button .

Click  to sort the EPG list by time or by channel

4.2.5 Fine Tuning Color and Display Quality

If the color or picture quality of the TV display needs to be adjusted, please do the following.

- 1. Click the **Setup** button  and in the *Setup* dialog box, click **Digital TV** icon on the left pane.
- 2. Select the **Display** option.



(This picture is only for reference.)

- 3. Then you can adjust the **Brightness**, **Contrast**, **Hue** and **Saturation** sliders until you get an accurate color.

Click **Save** to create your own settings. Next time, you can simply click **Setting Preference** to get your preferred settings.

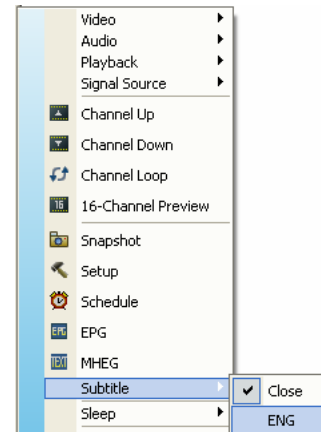
- 4. If you want to revert to default settings, please click Default.

## 4.2.6 Enabling the Subtitle Function

If your local broadcasters provide a subtitle service, you can view them by doing the followings:

Right click the TV screen, point to Subtitle and choose the desired language.


To hide the subtitles, please right click the TV screen, point to Subtitle and choose Close.

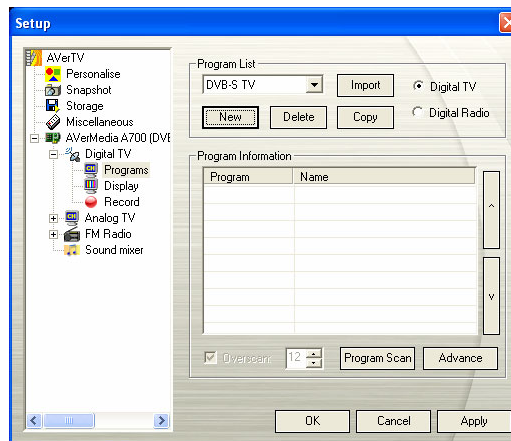


## 4.3 Digital Satellite TV (DVB-S)

### 4.3.1 Scanning channels (Importing a Frequency Table)

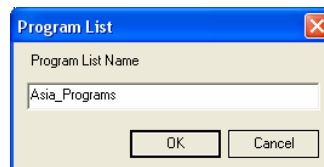
You can import any satellite channel data file (\*.sdx) downloaded from the Internet into the application and then scan the stored frequencies for the latest digital satellite programs.

1. Click the **Setup** button  and in the *Setup* dialog box, click **Digital TV** icon on the left pane.
2. Then select **Programs** under the **Digital TV** icon.

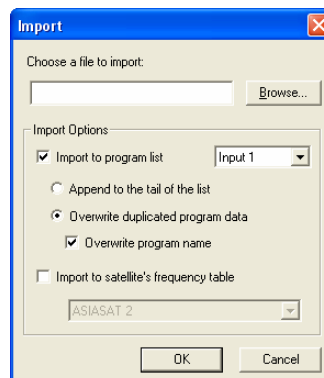


(This picture is only for reference.)

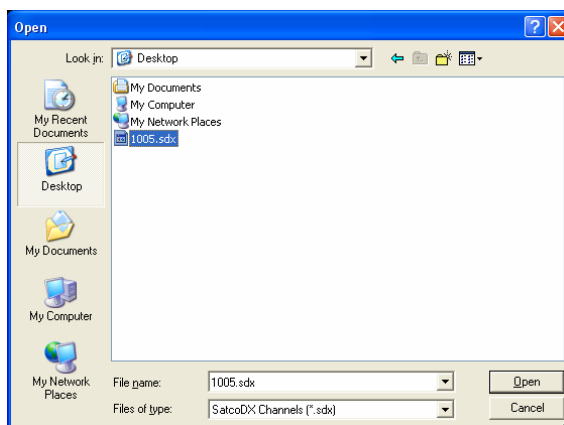
3. Click **New** and the *Program List* dialog box will appear. Type in the chosen name and click **OK**.



4. Click **Import** and the *Import* dialog box will appear.



5. Click **Browse** and the *Open* dialog box will appear.
6. Choose the desired channel data and click **Open**.



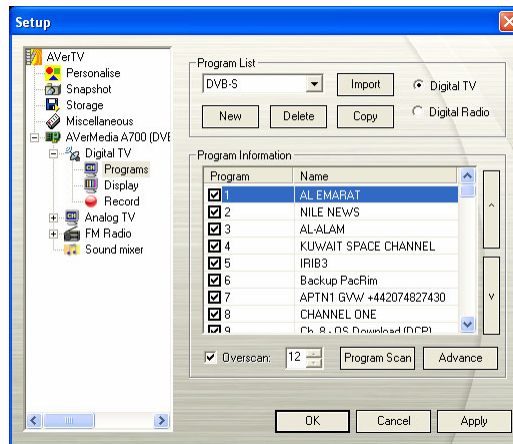
7. Then determine how to import the data file by choosing the desired import options. The options are explained below:

<b>Import to program list</b>	This option will add the program data from the imported file into the selected input port's program list. With this option enabled, you can access the newly added programs without re-scanning the programs.
<b>Append to the tail of the list</b>	The imported program data will be added to the end of the application's program list.
<b>Overwrite duplicated program data</b>	The imported program data will overwrite the application's program list when they have the same data.
<b>Overwrite program name</b>	For duplicated program data, the program names will be replaced by the imported data.
<b>Import to satellite's frequency table</b>	The option will add the frequencies stored in the imported file into the selected satellite's frequency table.

☒ **Note:** It is highly recommended to choose **Import to satellite's frequency table** and then re-scan the channels to obtain the latest program data. This is because the program data stored in the imported file is not probably the most up to date.

8. In this example, we select **Import to satellite's frequency table** only, and then choose the appropriate satellite name from the drop-down list. Click **OK**.
9. Then check your LNB's configurations. Please refer to [3.2.3 Scanning Digital Satellite Programs](#) for more information.
10. Click **Program Scan** to start the scanning process.
11. Click **Apply** to save the scanning results.






(This picture is only for reference.)

☒ **Note:** All programs are automatically classified into two categories. (Digital TV and Digital Radio) Select **Digital TV** to display TV programs; select **Digital Radio** to display radio programs.

#### 4.3.2 Scanning channels (Adding Frequencies Manually)

You can add new frequencies one by one if you do not want to import any existing satellite channel data.


1. Click the **Setup** button  and in the *Setup* dialog box, click the **Digital TV** icon on the left pane.
2. Click **Edit** next to the satellite name where you want to add new frequencies. The *Satellite Information* dialog box will appear.
3. Specify the correct frequency, FEC, symbol rate, and polarization.

Frequency(KHz):	<input type="text" value="3767000"/>	FEC:	<input type="text" value="3/4"/>
Symbol	<input type="text" value="6525"/>	Polarization:	<input type="radio"/> Horizontal <input checked="" type="radio"/> Vertical

4. Click **Insert**.
5. Repeat steps 1 to 4 if you want to add more frequencies.
6. Then check your LNB's configurations. Please refer to [3.2.3 Scanning Digital Satellite Programs](#) for more information.
7. Click **OK** to exit the dialog box.
8. Select **Programs** under the **Digital TV** icon, and click **Program Scan** to obtain the program data.
9. Click **Apply** to save the scanning results.

### 4.3.3 Editing or Removing Frequencies

You can edit or delete the undesired frequencies if the data is incorrect.

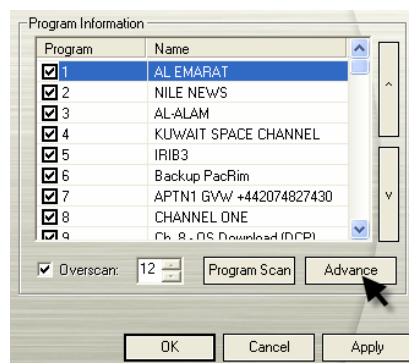
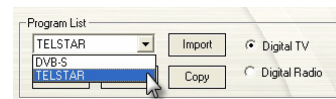
1. Click the **Setup** button  and in the *Setup* dialog box, click the **Digital TV** icon on the left pane.
2. Click **Edit** next to the satellite name where you want to edit frequencies. The *Satellite Information* dialog box will appear.
3. Then choose one of the following actions:

<b>To edit a single frequency</b>	Select the desired frequency. Change its data, such as its frequency or FEC, and then click <b>Modify</b> .
<b>To delete a single frequency</b>	Select the frequency that you want to remove, and click the <b>Remove</b> button located on the lower-left corner.
<b>To delete the whole frequency table</b>	Click the <b>Remove</b> button located on the upper-right corner.

4. Click **OK** to exit the dialog box.

### 4.3.4 Scanning Single or Range Frequency (For Advanced Users)

1. Select the desired program name from the *Program List*.
2. Click **Advance** located at right-lower corner in the **Programs Information** section. Then the *Advance* dialog box will appear.




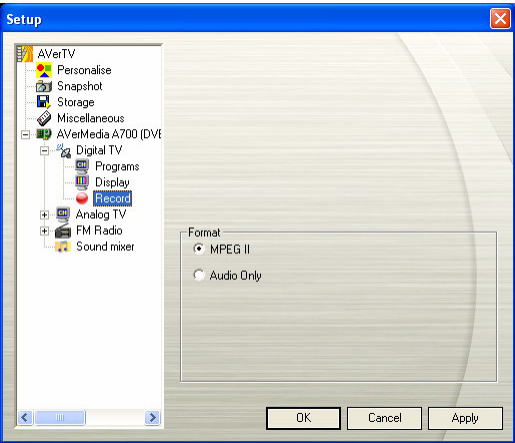
3. When there are programs/frequencies missing from the program list, select **Single Frequency** or **Range Frequency**.

☒ **Note:** **Range Frequency** may take you from several hours to more than a half day. Please be patient.

4. Specify the correct input port, polarization, frequency and symbol rate.
5. Click **Scan**.
6. After scanning, new active programs/frequencies will be memorized and listed on the left pane of the dialog box.
7. Click **OK** to save the scanned results.
8. Click **Apply** to save the scanned channel.

4.3.5 Customize Video Recording Settings

- 1. Click the **Setup** button  and in the *Setup* dialog box, click **Digital TV** icon on the left pane.
- 2. Select the **Record** option.
- 3. Select recording type. By default, the application is set to record both audio and video in *MPEG- II* format. Or you can choose *Audio Only* for sound recording.




(This picture is only for reference.)

- 4. Click **Apply** to save the settings and click **OK** to exit the current dialog box. To abort this operation, click **Cancel**.

☒ **Note:** To determine the length of recording and to choose a destination folder in which to save the recorded audio, please refer to the section titled *Recording Settings*.

4.3.6 Using the EPG Function


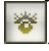
Electronic Program Guide (EPG) is a service that allows you to check the schedule of upcoming programs, and even the program schedules for the whole week. If the EPG service is provided by your satellite, simply click the **EPG** button  to open the *EPG* window.



First, select the desired program from the *Program* drop-down list and the *EPG* window will display the schedule for one week. You can also see the related information such as program name, time, and description about the program on the right pane of the window.

In addition, when switching channels, the TV screen can show the program information for current and future programs.




	Description
1	The current program
2	The program will be recorded on the preset time.

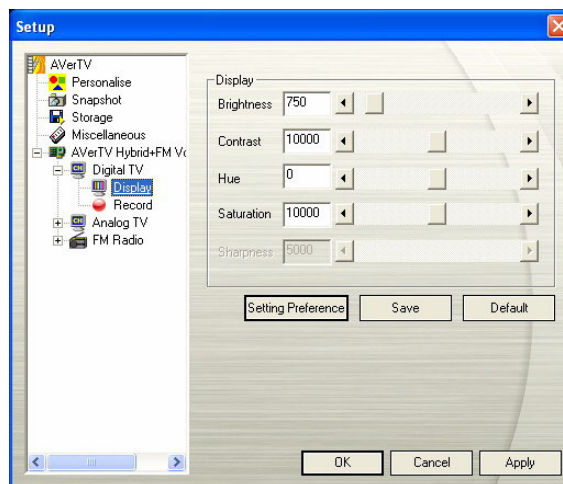
Our *EPG* window also allows you to preset a schedule for watching or recording programs. Just select your favorite programs and click the Record button  or the Activate TV button . And the system will execute your command on schedule.

If you want to download the latest program schedule, please click the Update button . Click  to sort the EPG list by time or by channel.

### 4.3.7 Fine tuning Color and Display Quality

If the color or picture quality of the TV display needs to be adjusted, please do the following.

1. Click the **Setup** button  and in the *Setup* dialog box, click **Digital TV** icon on the left pane.
2. Select the **Display** option.



(This picture is only for reference.)

3. Then you can adjust the **Brightness, Contrast, Hue and Saturation** sliders until you get an accurate color.


Click **Save** to create your own settings. Next time, you can simply click **Setting Preference** to get your preferred settings.

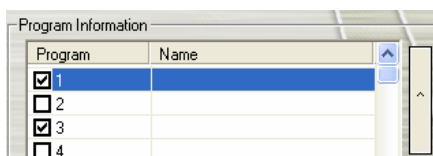
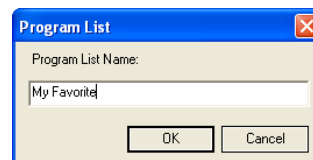
4. If you want to revert to default settings, please click Default.

## 4.4 Adding and Deleting Channel Groups

Selecting a Channel Group allows you to switch between the channels of the selected group only when pressing the **Channel Up/Down** button. If you want to add or delete a channel group, do the following:

To add a new channel group:

1. Click the **Setup** button  and in the *Setup* dialog box, click **Analog TV** or **Digital TV** icon on the left pane.
2. Click **New** and the *Program List* dialog box will then appear (as shown on the right).
3. Type in a group name and click **OK**.
4. Click **Program Scan** and click **Yes** to continue the scanning process.
5. Available channels will then be listed in the *Program Information* and now you can delete the unwanted programs by clearing the check box.

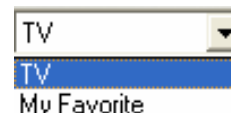


6. Click **Apply** to save the settings and click **OK** to exit the current dialog box. Or you can click **Cancel** to revert to the original settings.


OR,

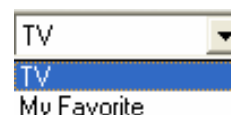
If you don't want to scan programs every time you create a new channel group, you can use the **Copy** function.

1. From the program drop-down list, select the group that you want to duplicate.
2. Click **Copy** and the *Program List* dialog box will appear.
3. Type in desired name and click **OK**.
4. Finally, just like the steps described above, clear the check mark next to the unwanted channels.






To delete a channel group:

1. Click the **Setup** button  and in the *Setup* dialog box, click **Analog TV** or **Digital TV** icon on the left pane.
2. From the program drop-down list, select the name of the group that you want to remove.
3. Click **Delete** to remove the selected group.




## 4.5 Selecting a TV/ Digital Radio Channel

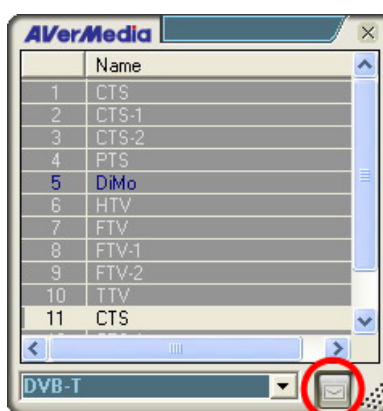
There are three ways of switching between TV/Radio channels:


- ◆ Click the **Channel Up/Down** buttons (  on the TV monitor window or  on the Control Panel) repeatedly until reaching your desired channel.
- ◆ Click  to open the *Numeric Panel* (as shown on the right). Then click on the **Numeric buttons** to get your desired channel number.



OR,

- ◆ Click the **Program List** button . When the Program Panel appears, first choose the desired group from the drop-down list and then double-click on the desired channel.



☒ **Note:** Locked channels (eg. Adult channel) are in red text. If you select the Filter button  located on the bottom right corner of the program panel, the system will hide all the pay channels in the program list. (Filter function is only available for digital TV.)


## 4.6 Adjusting Volume



On the Control Panel, click and drag your mouse over the **Volume** meter to increase or decrease the volume level. You can also press the + / – keys on the numeric keypad to adjust the volume.


## 4.7 Specifying a Channel Name or Description

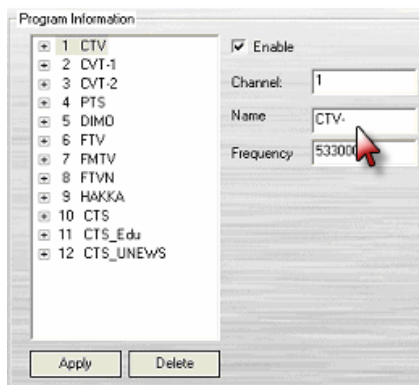
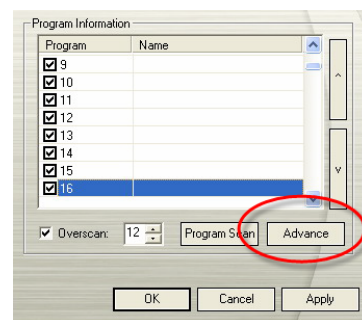
To assign a channel name or specify a description:

1. Click the **Setup** button  and in the *Setup* dialog box, click **Analog TV** or **Digital TV** icon on the left pane.
2. Under the *Name* column, double-click the text box of the channel you want to assign a name or description.
3. Type in the channel name or description, then press **Enter**.

Program	Name
<input checked="" type="checkbox"/> 1	CTS
<input checked="" type="checkbox"/> 2	CTS_Edu
<input checked="" type="checkbox"/> 3	CTS_UNEWS


OR,

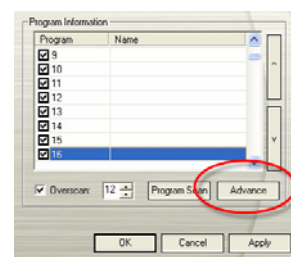
1. Click the **Setup** button  and in the *Setup* dialog box, click **Analog TV** or **Digital TV** icon on the left pane.
2. Click **Advance** located in the lower right corner in the *Program Information* section. Then the *Advance Program Configuration* dialog box will appear.
3. In the dialog box, select the channel/program you want to assign a name or description.
4. In the *Name* text box, type in the desired name or description. Press **Apply** to save the settings and click **OK** to exit the dialog box. Or you can press **Cancel** to abort without saving.



## 4.8 Modifying a program list name

Surely, you can change a program list name. To rename a program list, follow the steps described below:

1. Click the **Setup** button  and in the *Setup* dialog box, click **Analog TV** or **Digital TV** icon on the left pane.
2. Click **Advance** located in the lower right corner of the *Program Information* section. Then the *Advance* dialog box will appear.
3. Type the desired name in the *Program List Name* text box.




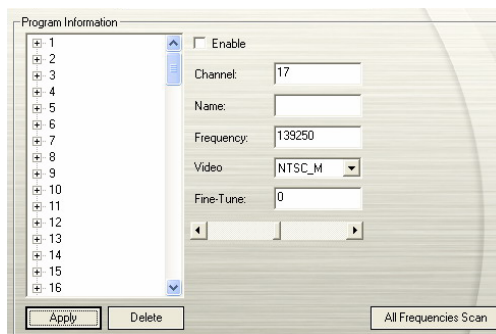
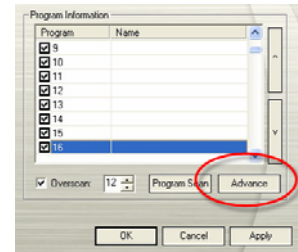
Program List Name:

- Press **Apply** to save the setting and click **OK** to exit the dialog box. Or press **Cancel** to abort the saving.

## 4.9 Removing Unwanted Channels


If you want to exclude undesirable channels from your channel list, do the following:

- Click the **Setup** button  and in the *Setup* dialog box, click **Analog TV** or **Digital TV** icon on the left pane.
- Click **Advance** located in the lower right corner of the *Program Information* section. Then the *Advance* dialog box will appear.
- In the *Program Information* section, select the unwanted channel and then click **Delete**. This channel will be removed and that means you won't be able to access these programs anymore.



OR,

If you just want to skip a certain channel, do the following:

- First, select the unwanted channel in the **Program Information** section.
- Clear the *Enable* check box so that you will not access that channel when you press **Channel Up/Down** buttons.  **Enable**
- However, you can still see the channel in your program list. If you want to watch that channel again at some point, just select the *Enable* check box.




### 4.10 Using the OverScan Function

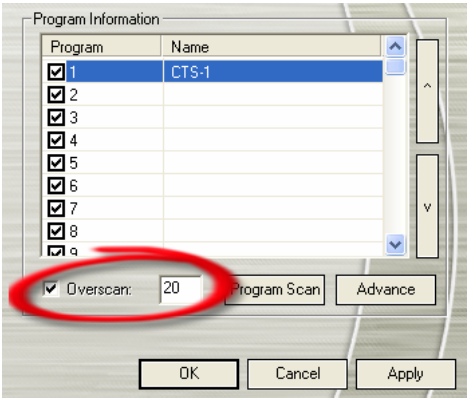
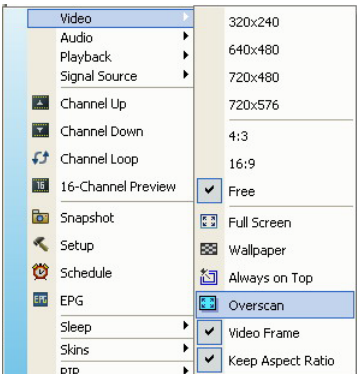
On some broadcast channels, you might see distorted lines or black spaces on the top, sides, or bottom of the screen. These video artifacts device from the source signal, and can be masked using the **OverScan** feature.

To hide the edges of the picture:

- Right-click on the TV Monitor and choose **OverScan** to have it enable it.

OR,

- Click the **Setup** button  and in the *Setup* dialog box, click **Analog TV** or **Digital TV** icon on the left pane. Enable **OverScan** and specify an appropriate number (0~20) to get better quality.



You can see the difference from the pictures below:




## 4.11 16-Channel Preview




The 16-Channel Preview function can display 16 TV channels on-screen at the same time. You can see clearly which TV programs are currently showing on these channels.

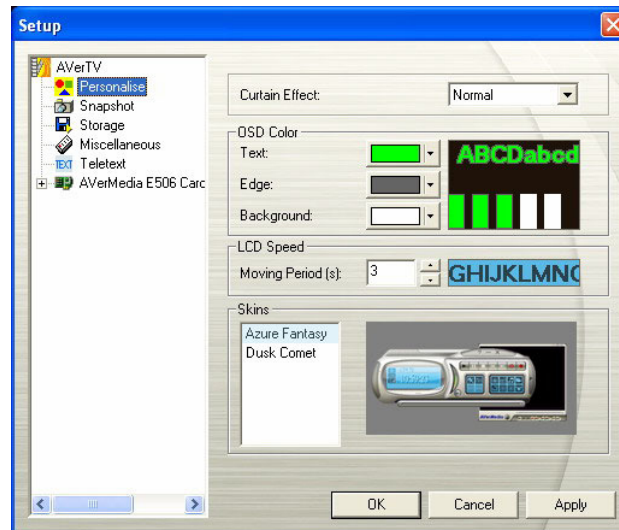
To preview the channels:

1. Click  to open the Numeric Panel.
2. Click the **16-Channel Preview** button.
3. The screen will be gradually filled up with 16 TV channels, starting from the currently selected channel.
4. Select a channel and press the numeric button “5” on the remote control to view it only and freeze the other channels. If you want to continue to display other channels just press **C** letter on the keyboard.
5. To display a channel on the TV Monitor window, select any one of the 16 channels on-screen and double-click on that channel, or use the arrow  $\uparrow, \downarrow, \leftarrow, \rightarrow$  button of your keyboard and then press **Enter**. You will then be tuned in to that channel.
6. Or, click the right mouse button or press **ESC** to return to the originally selected TV channel.



## 4.12 Changing the OSD Attributes



Click the **Setup** button  and in the *Setup* dialog box, click on the **Personalise** icon on the left pane. In this page, you can customize menu effect (Fade In/Fade Out), adjust OSD color (Text, Edge, Background), set the speed of marquee (LCD Speed), or change the appearance of the TV monitor and the control panel (Skins).

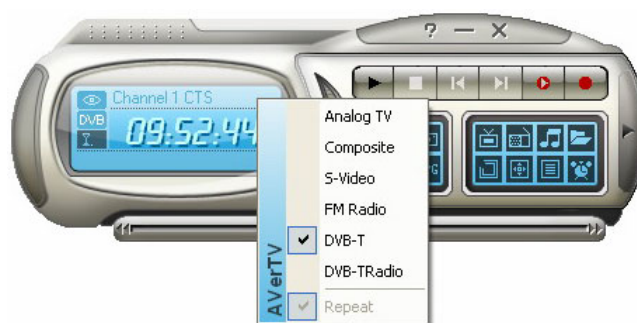


(This picture is only for reference.)


## 4.13 Changing Signal Source

There are two ways to change signal source:

- To switch between TV, radio or external video signals, click the **Radio Source** button  or **Video Source** button  on the control panel.
- Right click on the left pane of the control panel and a pop-up menu appears. Choose the desired signal source.

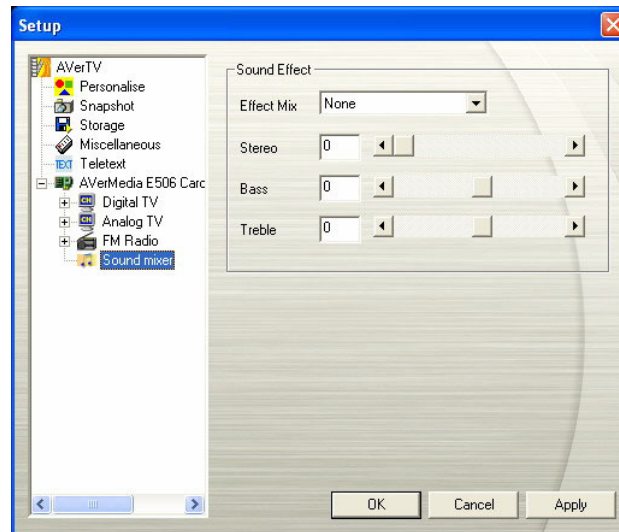


## 4.14 Sound Controlling (Optional)

Click the **Setup** button  and in the *Setup* dialog box, click **Audio Mixer** icon on the left pane.

This function provides a variety of sound effects including “Dolby Surround”, “Incredible Mono” and “Incredible Stereo”. You can also drag the slider to control the “Stereo”, “Bass” and “Treble” level.

Please be noted this function is only available for analog signals, eg. Analog TV, FM and so on.



(This picture is only for reference.)

# Chapter 5 FM Radio (Optional)

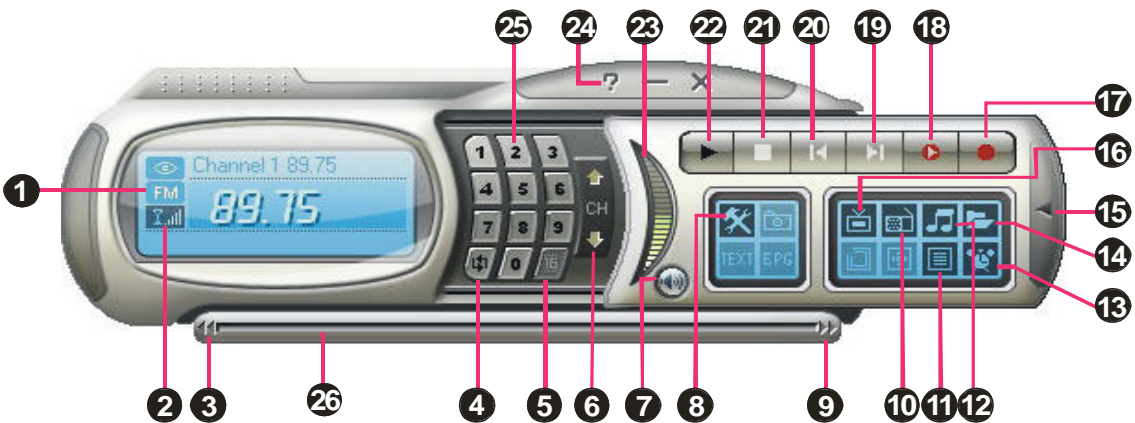
If the product you purchase with FM function, then you can read this chapter to learn more knowledge about this.

## 5.1 FM Radio Controls

Click the **FM Radio** button to listen to your favorite radio station.

Use the following button controls for selecting FM radio channels, adjusting volume, scanning FM channels, recording radio programs and more.

To change back to live TV, click the **Video Source** button.




(This picture is only for reference.)

1.	Signal Status/ Enable or Disable Repeat Play	14.	Play List
2.	Signal Strength	15.	Show/Hide Numeric Panel
3.	Backward	16.	Video Source
4.	Channel Loop	17.	Record
5.	16-Channel Preview	18.	TimeShift / Pause
6.	Channel Up/Down	19.	Next File
7.	Mute	20.	Previous File
8.	Setup	21.	Stop
9.	Forward	22.	Play / Pause
10.	Radio Source	23.	Volume Control
11.	Program List	24.	Help
12.	Audio Mode	25.	Numeric Buttons
13.	Schedule	26.	Playback Seek

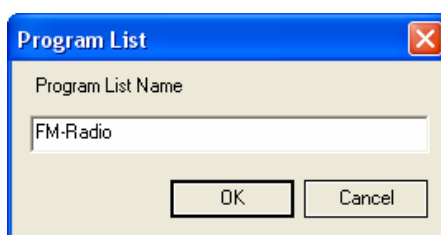
## 5.2 How to Auto Scan FM Radio Channels

If you are using FM radio for the first time, perform an auto scan to search and memorize active FM radio stations in your area.

To auto scan FM radio stations:

1. Click the **Setup** button  and in the *Setup* dialog box, click **FM Radio** icon on the left pane.
2. Click **New** and the *Program List* dialog box will appear. Type in the desirable name and click **OK**.

☒ **Note:** The system will assign a default name (FM-Radio) if you don't create a new program list before scanning.




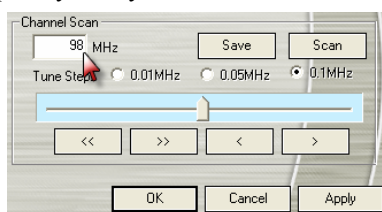
3. Click **Scan**. All active channels will be automatically scanned and memorized.
4. To terminate the scanning, click **Stop**.
5. Click **Apply** to save the settings and click **OK** to exit the current dialog box. To abort the settings, click **Cancel**.





## 5.3 Manually Scanning Specific FM Channels

Instead of scanning all channels, you can choose to manually scan one or a few channels only. To do this, follow this procedure.

To manually rescan specific FM radio channels:


1. Click the **Setup** button  and in the *Setup* dialog box, click **FM Radio** icon on the left pane.
2. Enter the channel frequency that you want to start scanning in the text box.



3. Select 0.01 MHz, 0.05MHz or 0.1MHz as your tuning increment.
4. Click  to scan upward or  to scan downward from the selected channel frequency. The scanning will stop when the application finds the closest ACTIVE FM frequency.
5. Or click  or  to increase/decrease the frequency to search your preferred channel.
6. Click the **Modify** button if you'd like to keep the newly scanned frequency.

## 5.4 Selecting a Channel

To select a channel:


1. Click  to open the *Numeric Panel*.
2. There are a number of ways to select a channel:
  - Click on the **Numeric buttons** to select a channel.
  - Click the **Channel Up/Down** button repeatedly until reaching your desired channel.

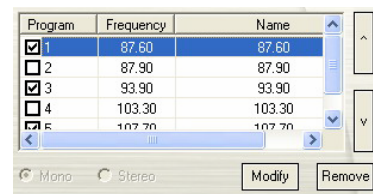
OR,

- Use the **numeric keys** on your keyboard to select a channel.

## 5.5 Skipping Unwanted Channels


If you want to exclude undesirable channels from your FM channel list, do the following:

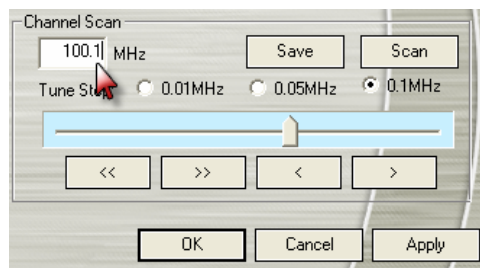
1. Click the **Setup** button  and in the *Setup* dialog box, click **FM Radio** icon in the left pane.
2. In the *Program* column, click the unwanted channel. The check mark will be removed, indicating that the channel will be excluded from your channel list and that you won't be able to access and hear them through the **Channel Up/Down** button.



## 5.6 Adding a Radio Frequency

If the desired channel cannot be found through scanning, follow the instructions below.


1. Click the **Setup** button  and in the *Setup* dialog box, click **FM Radio** icon in the left pane.
2. Specify the correct frequency in the text box (as shown below) and click **Save**.





## 5.7 Modifying a Channel Name

You can manually modify any existing FM radio channel.

1. Click the **Setup** button  and in the *Setup* dialog box, click on the **FM Radio** icon in the left pane.
2. Double click on the **Name** column of the existing FM channel which you want to modify.
3. Enter the name or description you want in the provided text box and then press **Enter**.


Program	Frequency	Name
<input checked="" type="checkbox"/> 1	87.50	My Favorite
<input checked="" type="checkbox"/> 3	88.30	88.30
<input checked="" type="checkbox"/> 4	100.10	100.10
<input checked="" type="checkbox"/> 5	88.50	88.50
<input checked="" type="checkbox"/> 6	89.30	89.30

4. To modify more channels, repeat step 2 to 3.
5. Click **Apply** to save the settings and click **OK** to exit the current dialog box.


## 5.8 Adding and Deleting Channel Groups

Selecting a Channel Group allows you to switch between the channels of the selected group only when pressing the **Channel Up/Down** button. If you want to add or delete an FM channel group, do the following:

To add a new channel group:


1. Click the **Setup** button  and in the *Setup* dialog box, click **FM Radio** icon in the left pane.
2. Click **New** and the *Program List* dialog box appears. Type in a group name and click **OK**.
3. Now you can start to scan FM radio channels and manage the scanned FM data for this new channel group. For more information, refer to [How to Auto Scan FM Radio Channels](#).
4. To add more channel groups, repeat steps 2 to 3.

To delete a channel group:

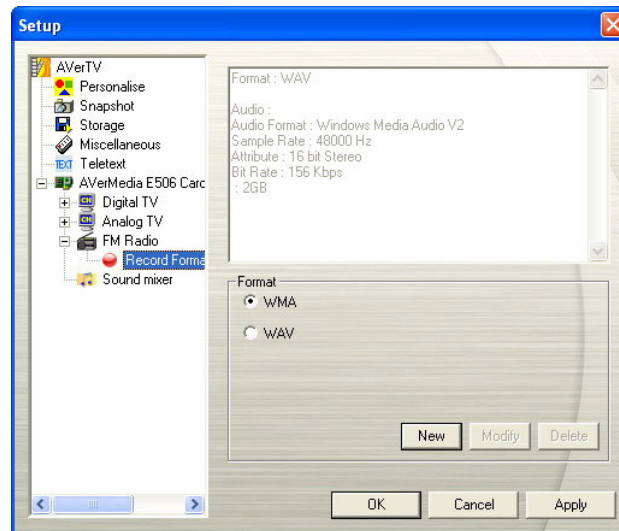
1. Click the **Setup** button  and in the *Setup* dialog box, click on the **FM Radio** icon in the left pane.
2. From the drop-down list, select the name of the group that you want to remove.
3. Click **Delete** to remove the selected group.

## 5.9 Customizing Audio Recording Settings

To customize audio recording settings:

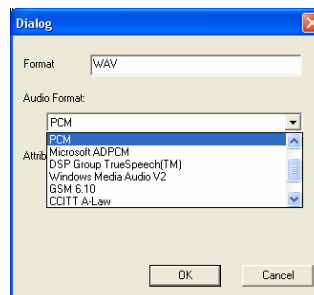
1. Click the **Setup** button  and in the *Setup* dialog box, click on the **FM Radio** icon in the left pane.
2. Then select **Record Format**. You can choose WAV or WMA as your audio file format. Or, you can click **New** to create your own file format.





(This picture is only for reference.)

3. In the *Audio* dialog box, select the audio file format from the *Audio Format* drop-down list.



4. Enter the desired format name or description in the *Format* text box.
5. Click **OK**.
6. If you want to change the settings of your own file format, click **Modify** or you can click **Delete** to remove the unwanted file format that you created earlier.
7. Click **Apply** to save the settings and click **OK** to exit the current dialog box. To abort this operation, click **Cancel**.

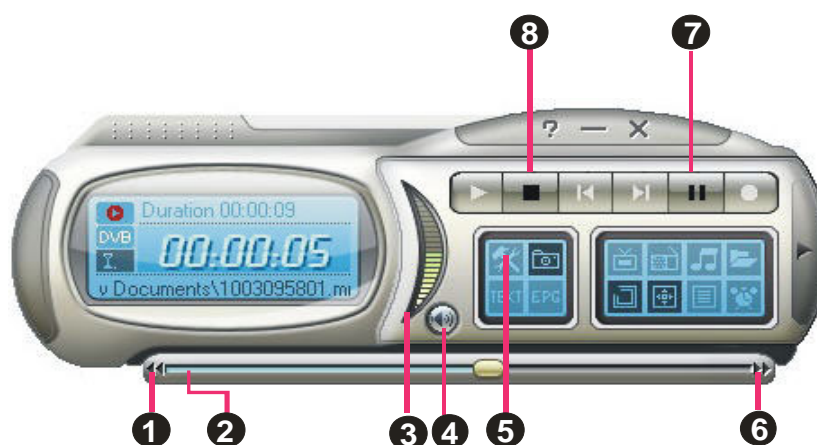
**Note:** To determine the length of recording and to choose a destination folder in which to save the recorded audio, please refer to the section titled *Recording Setting* in Chapter 7.

## Chapter 6 TimeShift

The TimeShift function performs background recording of a TV /Radio program, and lets you return and watch any part of the recorded program. At the same time, the live TV /Radio program continues to be recorded and played back so you won't miss any part of the show. You can also advance forward to skip commercials or rewind to replay scenes one more time.

### 6.1 TimeShift Controls

Use the following button controls in the Control Panel to start recording a live program, play back the program from where you left off, advance forward, rewind, and more.




(This picture is only for reference.)

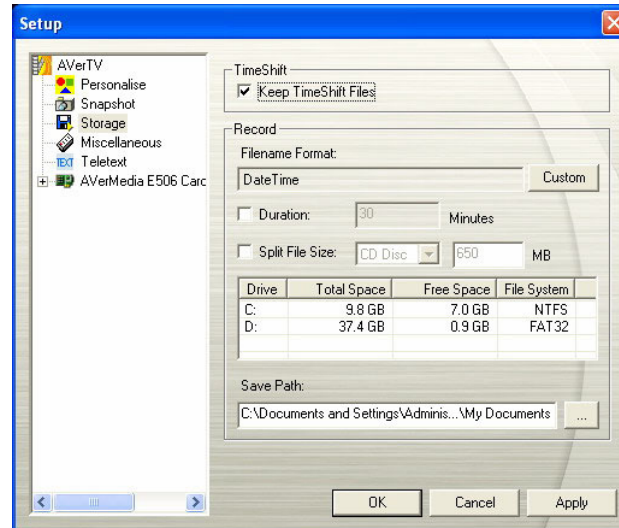
	BUTTON	FUNCTION
1	Backward	Click to move backward in intervals
2	Playback Seek	Drag the slider tab to move to any part of the recorded program.
3	Volume	Drag your mouse up/down to increase/decrease the volume level.
4	Mute	Turn off the sound.
5	Setup	Allows you to: <ul style="list-style-type: none"> <li>* Scan channels.</li> <li>* Set for Windows power option.</li> <li>* Configure snapshot settings.</li> <li>* Customize recording settings.</li> <li>* Customize the TimeShift function.</li> </ul>
6	Forward	Click to skip forward in intervals
7	TimeShift / Pause	Click to perform background recording of the live program and play it back simultaneously. / Click to temporarily freeze the playback.
8	Stop	Click to terminate recording and return to the live program

## 6.2 Customizing TimeShift Settings

Before you start using the TimeShift function, first check its recording settings to see if they fit your needs.

To check and customize settings:

1. Click the **Setup** button  and in the *Setup* dialog box, click the **Storage** icon on the left pane. You will then see the following settings.




(This picture is only for reference.)





2. By default, TimeShift performs recording of the TV program by creating a temporary video file and deletes this file once you click the **Stop** button. If you want to save the video file, select the **Keep TimeShift Files** check box.
3. In the *Record* section, you can determine your file name format, recording time, file size and destination folder.
4. Click **Apply** to save the new settings and click **OK** to exit the current dialog box. Or, click **Cancel** to use the original settings.

## 6.3 Using the TimeShift Function

To pause the live program:

1. Click the **TimeShift** button  on the Control Panel. The application will begin to record the program.
2. When you want to rewind, use the **Playback Seek** slider bar to move back to the part you want to watch or listen to again. Click and drag the slider tab to the left until you see the part of the show you wish to watch or listen to, then release the mouse button.



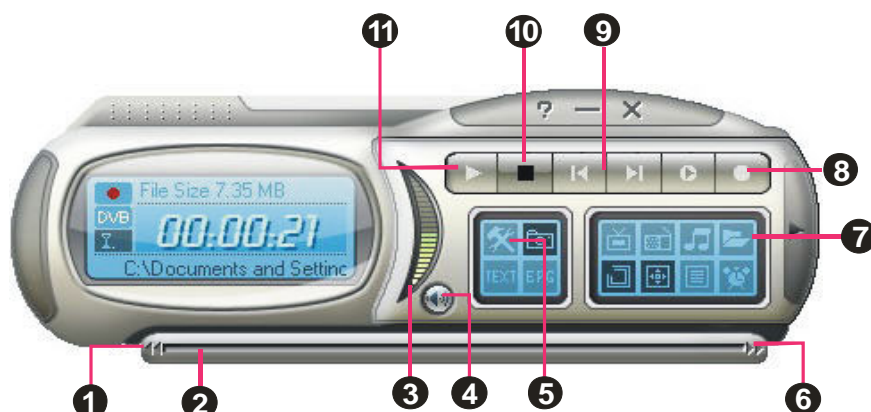
3. You can also click the **Backward** button  to move backward in fixed intervals until you reach the part where you left off.
4. To advance forward and skip some parts of the recording (for example TV commercials), drag the slider tab to the right. You can also click the **Forward** button  to move forward in fixed intervals.
5. To temporarily pause the playback, click the **Pause** button . Click the **Pause** button again to resume.
6. To return to the real-time viewing or listening of the live program, click the **Stop** button . This switches off the TimeShift function and returns you to live program.

## Chapter 7 PVR

You can use your computer as a personal video recorder, and record your favorite TV programs or capture video from an external source into your hard drive. Besides, you can also divide the recording files in proper sizes to facilitate burning onto removable optical media, such as CD-R and DVD disks.

### 7.1 PVR Controls

Use the following button controls for recording and video playback.





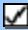

(This picture is only for reference.)

	BUTTON	FUNCTION
1	Backward	Click to move backward in intervals.
2	Playback Seek	Drag the slider tab to move to any part of the recorded file.
3	Volume	Drag your mouse up/down to increase/decrease the volume level.
4	Mute	Turn off the sound.
5	Setup	Allows you to: * Scan channels. * Set Windows power options. * Configure snapshot settings. * Customize recording settings. * Customize the TimeShift function.
6	Forward	Click to skip forward in intervals.
7	Play List	Click to create a playlist of video files to play back.
8	Record	Click to start recording.
9	Play Previous/Next File	Click to go to the previous/next video file in the playlist.
10	Stop	Click to stop recording or playback.
11	Play / Pause	Click to playback. / Click to temporarily freeze the playback.

## 7.2 Recording Settings



Before recording, check if the settings meet your needs.

1. Click the **Setup** button . In the *Setup* dialog box, click the **Storage** icon on the left pane.
2. By default, the system sets the recording “Date” and “Time” as the file name format. To create your own file name format, please click **Custom**.
3. The *Duration* option allows you to specify a recording duration otherwise the system will record the largest clip that your hard drive can accommodate.
4. This application lets you to divide the recording files in parts for burning onto removable optical media, such as CD (650 MB) and DVD (4096 MB) discs. Enable the *Split File Size* option and select the appropriate video file size from the drop-down list so that each video file will not exceed the limit. Or you can choose **Custom** to assign the file size you want.
5. Determine the destination folder. Click  to choose a folder you want.
6. Click **Apply** to save the settings and click **OK** to exit the current dialog box. To abort this operation, click **Cancel**.
7. To determine the file format, please refer to the section titled *Customizing Video Recording Settings in chapter 4* or *Customizing Audio Recording Settings in chapter 5*.

 **Note:** To hide the sound of the TV program when recording, click the Mute button  on the Control Panel.

## 7.3 Using the Recording Function

To record a TV/Radio program that you want, do the following:

1. Click the **Record** button  on the Control Panel.
2. You can click the **Stop** button  to terminate the recording and return to the live TV program.


## 7.4 Playing the Recorded Programs

Each TV program that you recorded will be saved as a video file in the assigned destination folder.

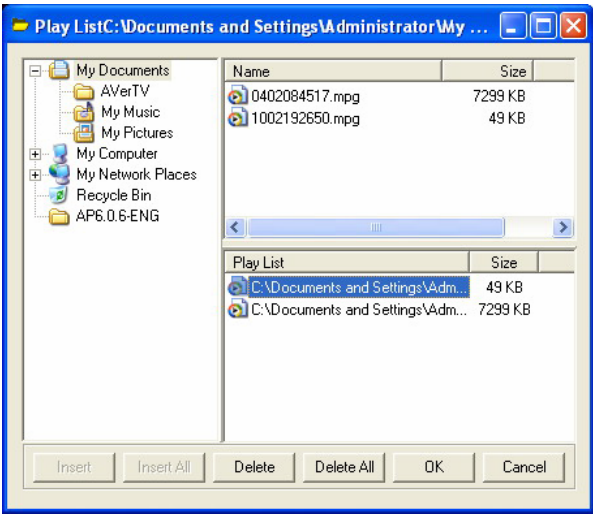
To play back the recorded video files:

Click the **Play** button  to play back.

OR,

- (1) Click the **Play List** button , and you may see some recorded video files listed in the top rightpane of the *Playback List* window.
- (2) To add more video files to the playback list, first navigate the *file* in the left pane to find the folder that contains the desired video files. When you have located the folder, the media files will then be displayed on the top right pane. Select the files that you want, then click **Insert**, or click **Insert All** to add all media files in the folder to the playback list.

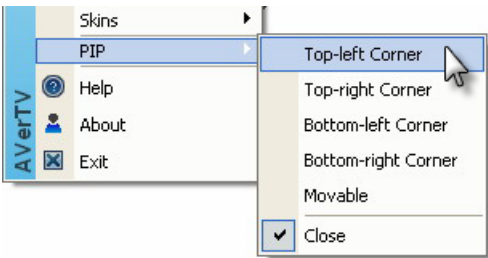
- (3) To delete files from the *Playback List*, select them from the list in the right bottom pane and click **Delete**, or click **Delete all** to delete all files in the playback list.




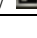




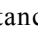

## 7.5 Picture-in-Picture Display

With the picture-in-picture window feature, you will be able to play back recorded video files, and at the same time, watch live TV.

To enable PIP function, right click the TV monitor, select **PIP** and choose desired position of the PIP window.



Position	Description
Top-left Corner / 	Display the PIP window on the top-left corner
Top-right Corner / 	Display the PIP window on the top- right corner
Bottom-left Corner / 	Display the PIP window on the bottom-left corner
Bottom-right Corner / 	Display the PIP window on the bottom-right corner
Movable / 	Resize the PIP window and separate it from the main window



By default, you will be able to play back recorded video files on the main window, and at the same time, watch live TV in the PIP window. If you want to switch the video playback to the PIP window and the live TV to the main window, press the button . You can also press the button  to fix the size of the PIP window and the distance between the main window and the PIP window. To exit the PIP window, press .

# Chapter 8 Image Capture


While you watch TV or recorded video from your PC monitor, you can use the **AVerTV 6.0** application to capture images for your document, presentation or web page.

## 8.1 Before Capturing

Before you start capturing images, first set the destination folder for saving captured images.

Click the **Setup** button  and select the **Snapshot** icon in the left pane. Then click  to choose a folder where you want to save captured images.

## 8.2 Capturing a TV/ Video Image

 To capture a still image, click the **Snapshot** button on the Control Panel. The *Album* will then appear, displaying thumbnails of the captured image.




	BUTTON
1	Wallpaper
2	Save as
3	Remove
4	Remove All


To capture another image, click the **Snapshot** button on the Control Panel again. New thumbnails will be added to the *Album* as you capture more images.

By double-clicking on the thumbnails, you can view images in a full-screen window with default image viewer.

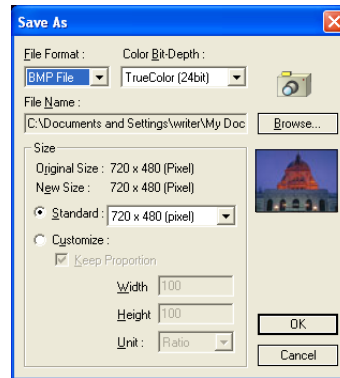
To display the captured image as your desktop wallpaper :

1. Select the thumbnail of the desired image and then click the **Wallpaper** button .
2. The selected image will be displayed as your wallpaper, the background of your desktop.

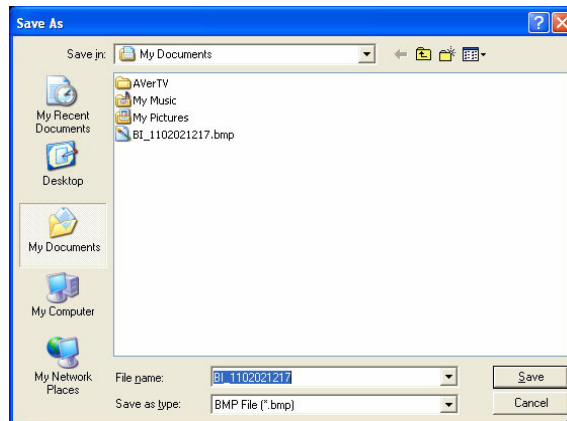
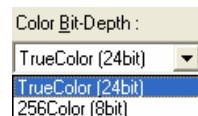
To save the captured image:

1. Select the thumbnail of the image and then click the **Save As** button . The *Save As* dialog box will then appear.

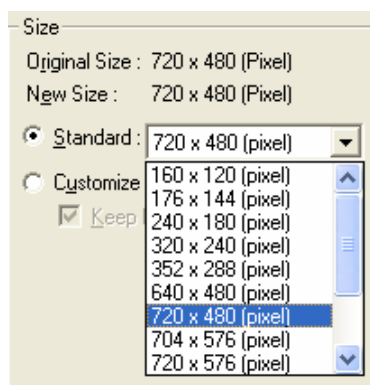




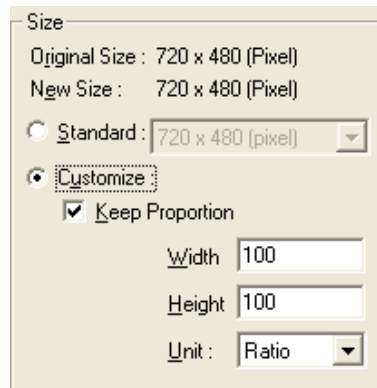
2. From the *File Format* drop-down menu, select the format for saving the captured image.
3. Choose the *Color* format.
  - Choose 24-bit to capture image in 16M colors.
  - Choose 8-bit to capture image in 256 colors.
4. Click **Browse** to scan for folders and select a destination location for saving the image. Then specify a file name for saving the captured image.



5. Choose the image size.
  - In the *Size* section, select the **Standard** option and choose a desirable image size from the drop-down list.




- If you want to set your own image size, select **Customize** and enter the image **Width** and **Height**. If you want to maintain relative width and height, select the **Keep Proportion** option. Choose a measurement unit from the **Unit** drop-down list. You can specify any image size you want. The maximum capture size can be 1600×1200.

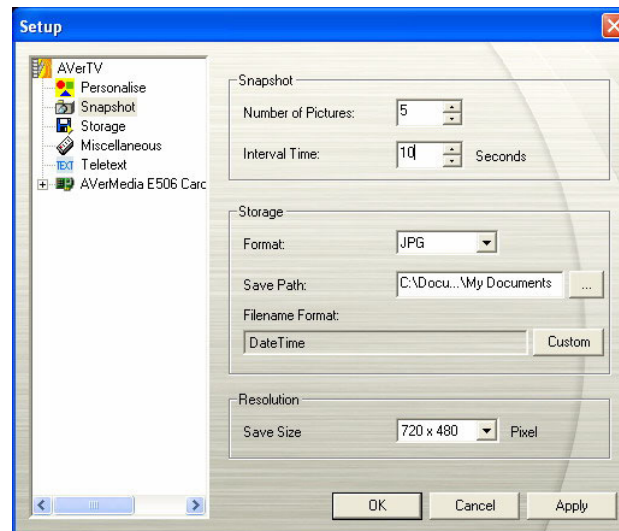


6. Click **OK** to save the image. Click **Cancel** if you do not want to save the image.


## 8.3 Multiple Image Sequence Capture

To capture a continuous sequence of images, do the following:

1. Click the **Setup** button . In the Setup dialog box, click the **Snapshot** icon in the left pane.



(This picture is only for reference.)

2. In the *Number of Pictures* box, specify the number of images you want to capture.
3. In the *Interval Time* box, specify the interval between captures. For instance, if you specify 10 seconds, an image will be captured every 10 seconds.
4. On this page, you can choose the file format, destination folder, file name format and image resolution in advance.
5. Click **Apply** to save the new settings and click **OK** to exit the current dialog box. Or Click **Cancel** if you do not want to change the settings.
6. Click the **Snapshot** button  on the Control Panel to start capturing.

## Chapter 9 Teletext / MHEG-5

Teletext or MHEG-5 (digital Teletext) makes TV viewing a unique experience. It views teletext broadcast from your television programs offering the most updated information on TV Schedules, News, Stock Market Prices, Concert & Theatre information and so on. Teletext/MHEG-5 information may not be available if there is no such service provided in your area.

### 9.1 MHEG-5 Support (UK Digital Teletext Service)

Click Teletext button on the control panel and then the MHEG-5 Window will appear.

To activate the service, simply press the R key or red button once this window opens.




The table below is a list of keyboard shortcuts that you may find useful while using MHEG-5.

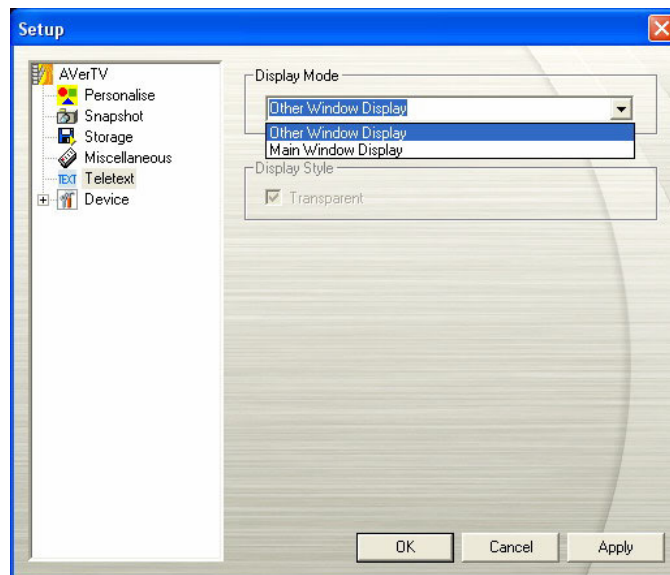
Press	Correspond to
R	Red
G	Green
Y	Yellow
B	Blue
0~9 / ↑ ↓ ← →	numeric keys / arrow keys
T	TEXT
ESC	Cannel
Enter	Select

☒ **Note:** MHEG-5 Support will only function in the UK.

## 9.2 Teletext


### 9.2.1 Customize the Display Mode

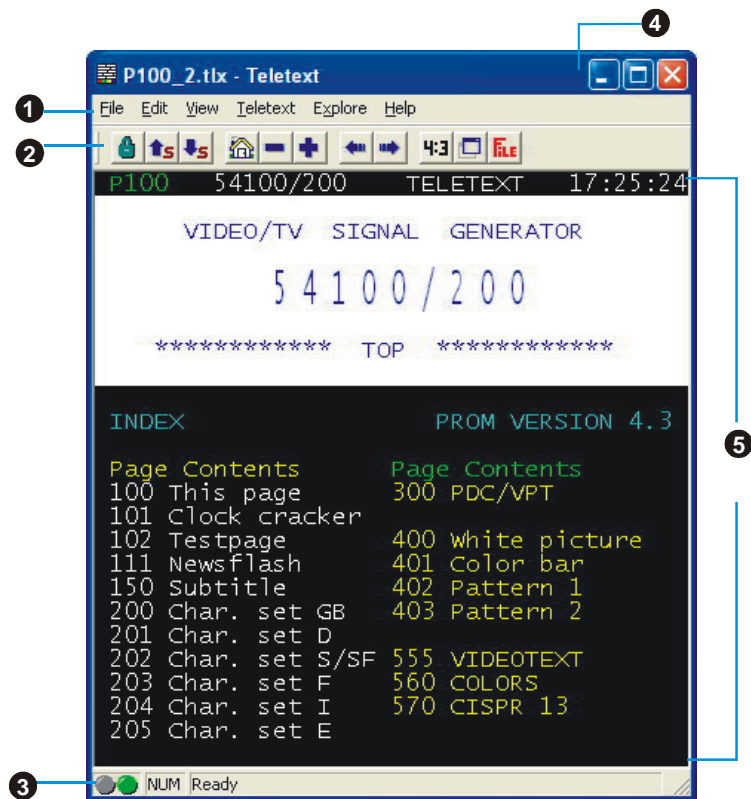
1. Click the **Setup** button  and in the setup dialog box, click the Teletext icon in the left pane.
2. From the **Display Mode** drop-down list, choose **Other Window Display** to open a new Teletext window or choose Main Window Display to overlay the Teletext window on the TV monitor.
3. Select the **Transparent** check box to make the Teletext window transparent.



(This picture is only for reference.)

9.2.2 Overview

Click the **Teletext** button  on the control panel to open the Teletext application as shown below. For more information about Teletext, please see below in this chapter.



	BUTTON	FUNCTION
1	Menu Bar	This contains the names of the available drop-down list option menus. To access any of the menu items, simply click on it or hold down Alt and press the first character of each item.
2	Toolbar	It includes buttons that gives quick access to perform certain frequently used functions from the <b>Menu Bar</b> .
3	Status Bar	The status bar is located in the lower left corner of the window. It contains a short text message or explanation of the currently selected menu command.
4	Title Bar	This is located at the top of the window. It contains the current displayed page number or in hexadecimal page number of an active window.
5	Teletext Browser	Teletext information is displayed in this area. The information would be the TV schedules, news, stock market reports, concert & theater information and so on.

### 9.2.3 Toolbar Buttons



#### Lock Sub page

Locks the current sub page. The upcoming transmitted sub pages will be stored in the Teletext Cache for later use.



#### Previous Sub page/ Next Sub page

Switches to the next or the previous sub page.



#### Home (Ctrl+H)

Connects to the teletext home page which always goes to page 100, but page 100 may not be the primary teletext source.



#### Previous Page (-) / Next Page (+)

Displays the preceding or the succeeding teletext in hexadecimal page number.



#### History Back / History Forward

Retrieves the previous page in the history list.

Moves a page forward in the history list. The command is usable after one or more back steps in the history list.



#### TV Scale

Changes the proportion of the Teletext window to 4 by 3.



#### Always On Top

Makes Teletext Window float over the top of other applications.



#### Teletext File

Switches between the Teletext file which is opened from the previously saved file and the most recent Teletext information.

### 9.2.4 LED Lamp

Different LED color indicates different states.

#### Left LED Lamp:

Gray -- The system does not receive the teletext broadcast data.

Green -- The system is receiving the teletext broadcast data.

#### Right LED Lamp:

Green -- The cache in Teletext application is running less than 90% usage.

Yellow -- The cache in Teletext application is running over 90% usage.

Red -- The cache in Teletext application is running out.

## 9.2.5 Using Teletext

The following briefly describes how to use the Teletext feature.

### Teletext Page

There are two page numbers displayed on the first line of each teletext page. The page number on the left is the page number that you have selected or keyed in. The other one in the middle of line is the page number of the currently displayed teletext data.

The newly selected page number will appear on the upper left corner of the page. Sometimes, this may take a while to retrieve the newly selected teletext page. There will be no changes on the page when there is no page data transmitted with the number you have selected.

A teletext page can be selected with one of the following methods:

- Key in the hexadecimal or teletext page number using the numeric buttons of your keyboard or AVerMedia TV remote control.
- Press the + (positive) or – (negative) button to move to the succeeding or preceding teletext page.

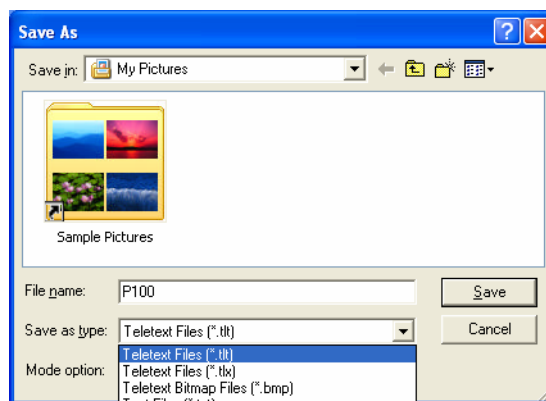
### Copying a Teletext Page

1. Simply click and drag over the text or the area that you want to copy using the mouse.
2. Choose **Copy** from the **Edit** menu (*Alt+E, C*) or press *Ctrl+C*.
3. You can then paste the contents of the teletext page in TXT or BMP format to a document you are working with.

### Saving a Teletext Page

Some teletext pages include a number of subpages. If the file has subpages, teletext will also save the existing subpages.

1. A teletext page can be saved using one of the following ways:
  - To automatically save the file using the displayed teletext page as the filename and the default file format, choose **Save** from the **File** menu or press *Ctrl+S*.
  - To save the file by specifying your own filename and different file format, choose **Save As** from the **File** menu or press *Ctrl+A*.
2. A save as dialog box will appear:



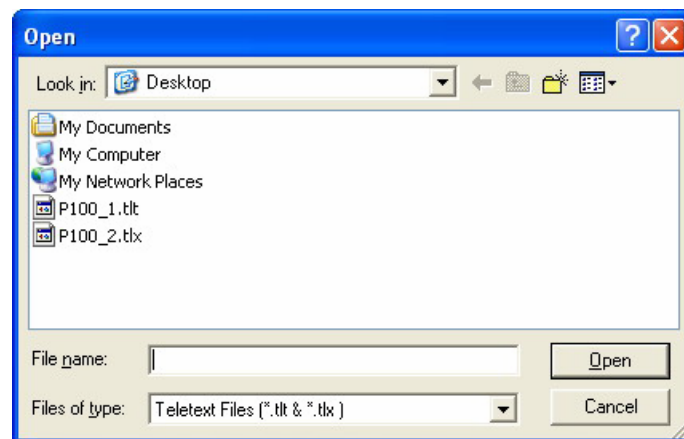
3. Select the file format to use for saving the teletext page. You can save the teletext page in :

**TXT** Text file format  
**BMP** Windows bitmap file format  
**TLT** Teletext file format  
**TLX** Teletext file format

4. Enter a filename and click OK.

### Opening a Teletext Page

1. Choose **Open** from the **File** menu or press *Ctrl+O*.
2. From the Open dialog box, select the file containing the teletext page you want and click **OK**.



### Opening Another Teletext Window

To open another teletext window, choose **New Window** from the **File** menu or press *Ctrl+W*.


### Closing the Active Teletext Window

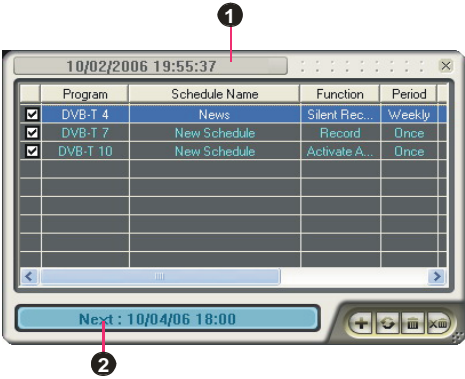
Choose **Close Window** from the **File** menu or press *Ctrl+L* to close the active teletext page window.



# Chapter 10 Scheduler

The **Scheduler** allows you to create a list of preset schedules for watching and recording your favorite TV/Radio programs. You can set the day and time to record the TV/Radio program and specify the length of recording.

To run this application, click the **Schedule** button  on the Control Panel. Then the Scheduler dialog box will appear.



BUTTON	
1	Current Time
2	Selected Schedule

The check box next to the **Program** column (as shown at right) indicates the schedule will be executed at a preset time. Once the application starts to execute a scheduled task, the system will clear the check mark automatically. If you want to skip the schedule temporarily, just clear the check box.

Program	
<input checked="" type="checkbox"/>	DVB-T 4
<input type="checkbox"/>	DVB-T 7
<input checked="" type="checkbox"/>	DVB-T 10

## 10.1 Schedule Management

This displays a list of preset schedules you have created.

**Modify** 

Select a preset schedule and click this button to make changes.

**Delete** 

Click this to delete the selected schedules.

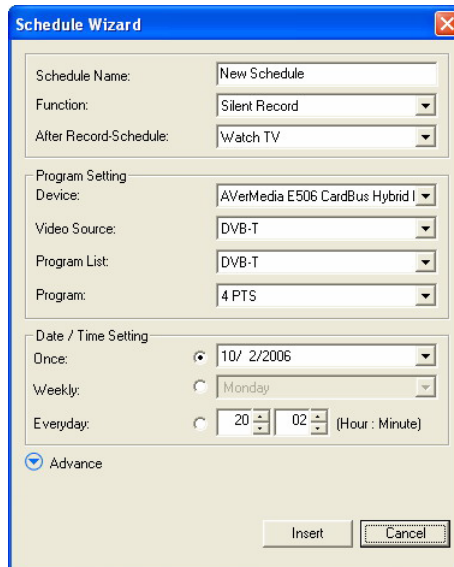
**Delete All** 

Click this to delete all schedules.


## 10.2 Adding Schedules

To create a new schedule:

1. Click the **Add** button .
2. The following dialog box will then appear:




3. Type the desired name in the *Schedule Name* text box.
4. From the *Function* drop-down list, select **Activate AVerTV** to watch a TV program or listen to a radio broadcast. Otherwise, select **Record** to save a TV/Radio program for future viewing/listening. You can also select **Silent Record** which means the system will perform background recording instead of activating the TV/Radio program.

☒ **Note:** If you select **Silent Record**, when the application is performing the recording task, the icon  will appear on the task bar (the lower right corner of the screen). To immediately watch or listen to the TV/FM program which is being recorded, just double-click this icon.

5. In the *After Record-Schemes*, it automatically switches to the selected power control mode when the schedule recording is completed. Choose an appropriate power control status listed below:

- Watch TV: Switch to real-time TV mode.
- Exit: Turn off the AVerTV Application.
- Stand By: Turn off your monitor and hard disks.
- Hibernate: Save everything and then turn off your computer.
- Shut Down: Turn off your computer.



☒ **Note:** If you choose **Watch TV** from the drop-down list, after completing the **Silent Record** task, the icon  will appear on the task bar (the lower right corner of the screen). Just double-click this icon, you can immediately watch live TV or listen to the radio.

6. In the *Program Setting* section, select the device, video source, group and channel you want.

7. Set the schedule to tune in live TV or to perform recording. You can set the schedule on **Once**, **Daily** or **Weekly**.
  - Choose **Once** to perform schedule at a preset day and a preset time.
  - Choose **Weekly** to perform schedule every week, at a preset day and time.
  - Choose **Everyday** to perform schedule everyday at a preset time.
8. If you choose **Activate AVerTV** in step 4, click **Insert** to complete the settings. If you choose **Record** or **Silent Record**, you need to do the following.
9. Click the **Advance** icon.
10. In the Record Setting section, you can determine the file format, recording duration, file size, destination folder or audio mode.
11. Click **Insert** to save the new schedule or click **Cancel** to abort the saving.

# Chapter 11 Hot Keys

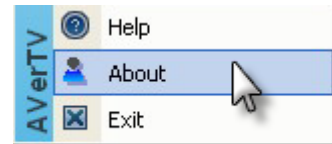
Hot Key	Description	Function
UP/DOWN ARROW	Channel or Frequency Up/Down	Press to go to the next upper/lower TV/Radio channel.
L	Channel Loop	Press to go to the previously accessed TV/Radio channel.
NUMERIC KEYS	Select Channel	Use NUMERIC KEYS to directly enter the TV/Radio channel number.
ESC	Stop or, Change back to Normal View	Stop (playback, recording, TimeShift, or 16-Channel Preview). Or change full screen back to normal view.
F1	Help	Open the Users Manual.
F2	Minimize	Minimize the application and an icon will appear in the notification area. To return to the previous screen, double click the icon again.
F5	Full Screen	Show TV/Video in full screen.
F6	Display (OSD) information	Display information on the TV monitor.
F8	16-Channel Preview	Press to perform 16-Channel Preview function.
+/- (on your numeric keypad)	Volume	Press to increase or decrease the volume level.
LEFT/ RIGHT ARROW	Rewind/ Fast Forward	Press to rewind or fast forward (for playback and TimeShift).
A	Audio Mode	Choose between available languages.
D	Show/Hide the Control Panel	Toggles between showing and hiding the control panel.
M	Mute	Turn off/on the sound.
Ctrl + N	Play Next File	Play the next file in the playlist.
Ctrl + P	Play Previous File	Play the previous file in the playlist.
Ctrl + R	Record	Start recording.
P	Play / Pause	Play/Pause (for playback, recording, and TimeShift).
Ctrl + S	Snapshot	Capture an image (or a continuous sequence of images).
Ctrl + T	TimeShift	Enable the TimeShift function.



## Chapter 12 Customer Service

The AVerTV application provides a convenient tool, which allows users to contact AVerMedia's customer service department easily via the website. Please make sure that you have already connected to the Internet.

To contact the customer service:

1. Right-click on the TV monitor window. When a menu list pop-up, choose **About** (as shown at right).
2. When a information dialog box appear, select the office in your area from the drop-down list.



3. Click  to connect to AVerMedia's website. Then click  to exit the current dialog box.

[www.avermedia.com](http://www.avermedia.com)