



environmental monitoring
s y s t e m s

IAQ

IAQ Sampling Cassettes, Impactors & IAQ Accessories.....Pages 5 -15

IAQ Sampling Pumps, Accessories, Timers & Calibration Equipment.....Pages 17- 22

IAQ InstrumentsPages 23 - 43

IAQ Microscopes, Slides, Accessories & Analytical SuppliesPages 45 - 48

Remediation & Safety ProductsPages 49 - 60

The Technology Leader

NEW IN IAQ





IAQ SAMPLING CASSETTES, IMPACTORS & IAQ ACCESSORIES



Disposable Non-Viable Cassettes, Accessories & Kits	6-10
Reusable Non-Viable Samplers.....	11-12
Viable Samplers, Accessories & Kits	13
IAQ Accessories	14-15



Disposable Non-Viable Cassettes, Accessories & Kits



Patent # 6,692,553

THE NEXT GENERATION OF SPORE TRAPS



World Journal of Aerosol Science confirms ems circular impactors collect the widest range of contaminants.

"The decrease of the jet-to-plate distance (in the EMS circular jet impactors) results in a critical decrease of the impactor's cut-off size: from about 2.5 microns of the widely used slit impactors to about 1 micron. This makes such an impactor efficient for collecting spores of ALL fungal species and even some bacterial species."

-World Journal of Aerosol Science

Utilizing a 360-degree impaction chamber, the Micro5 was pioneered to evenly & quantitatively collect aeroallergens such as pollens, mold & fungal spores, fibers, dander, insect components and other air-borne contaminants.

The Micro5 is proven to have an exceptionally uniform collection trace and is virtually 100% accurate for the entire fungal spore range. (d50 is less than 1 micron!)

To ensure optimal collection efficiency the Micro5 is designed to operate at a flow rate of 5 liters per minute.

5 liters **5** minutes



PART #	PRODUCT DESCRIPTION	LIST PRICE	ems PRICE
MICRO5 CASSETTES, KITS AND ACCESSORIES			
120138-M5	Inner Wall Samplers for Micro5, 10ea	\$12.95	\$9.95
120142	Micro5 Basic Kit (w/ 3-30 LPM Megalite Pump)	\$329.00	\$279.00
120144	Micro5 Deluxe Kit (w/ 3-30 LPM Megalite Pump)	\$429.00	\$359.00
120169	Micro5 MicroCell 10 pack	\$69.00	\$65.00
120170	Micro5 MicroCell 50 pack	\$299.00	\$249.00
120173	Carry Case for Micro5 (customized foam for 1 to 3 GilAir-5 Pumps)	\$149.00	\$99.00
120175	Micro5 Deluxe Kit w/ 1ea GilAir-5 Pump (Kit includes: Micro5 10 pack, tubing connectors, 1 GilAir-5 pump, Charger, Tool Kit and Carry Case)	\$795.00	\$695.00
120177	Micro5 Deluxe Kit w/ 3ea GilAir-5 Pumps (Kit includes: Micro5 10 pack, tubing connectors, 3ea GilAir-5 pumps, 3ea Chargers, 3ea Tool Kits and Carry Case)	\$2095.00	\$1995.00
120180	GilAir-5/Micro5 Stand Bracket	\$7.50	\$5.50
120148	Deluxe Inspector Kit (Kit includes: 2ea ExaminAir Pumps, 2ea Chargers, 2ea IAQ stands, 2ea 10pk Micro5, Travel Case)	\$349.00	\$329.00
120147	Basic Inspector Kit (Kit includes: 2ea ExaminAir Pumps, 2ea Chargers, 1ea 10pk Micro5, Travel Case)	\$229.00	\$199.00

Disposable Non-Viable Cassettes, Accessories & Kits



Deluxe Kit

(w/ MegaLite Pump)

120144



- MegaLite Pump w/ Mounted 3-30LPM Rotameter
- 10 Pk Micro5
- 6ft of Vinyl Tubing
- IAQ Stand
- 20 Vacuum Dust Cassettes, Carpet Templates & Zip Bags
- 10 Wall Checks
- 5 Mold Swabs
- 10pk Mold Tape Slides
- Heavy Duty Case

Basic Kit

(w/ MegaLite Pump)

120142



- ems MegaLite Pump w/ Mounted 3-30LPM Rotameter
- 10 Pk Micro5
- 6ft of Vinyl Tubing
- IAQ Stand
- Heavy Duty Case

Deluxe Inspector Kit

(w/ ExaminAir Pump)

- 2ea ExaminAir Pumps
 - 2ea Chargers
 - 2ea IAQ stands
 - 2ea 10pk Micro5
 - Travel Case

120148



120175

Deluxe Kit

(w/ GilAir-5 Pump)

Programmable Clock - 5 Liters 5 Minutes

Also available Micro5 Deluxe Kit
w/ 3ea GilAir-5 Pumps #120177



- Micro5 10 pack
- Tubing connectors
- 1 GilAir-5 pump
- Charger
- Tool Kit
- Carry Case

Basic Inspector Kit

(w/ ExaminAir Pump)

120147

- 2ea ExaminAir Pumps
 - 2ea Chargers
 - 1ea 10pk Micro5
 - Travel Case



Disposable Non-Viable Cassettes, Accessories & Kits



Receive with purchase:

**free 20 minute
consultation with
America's
Healthy Home Expert!**

pump



air sampling cassettes

Lab Analysis Form



instructions &
information



Detects:

- ✓ mold
- ✓ pollen
- ✓ spores
- ✓ pet dander
- ✓ Ready to use pump
- ✓ 4 air sampling cassettes
- ✓ STEP BY STEP instructions
- ✓ Lab Analysis Form
- ✓ Box with pre-paid postage
- ✓ Mold & Allergen Information
- ✓ All Lab fees included

Pump is ready to use and features EASY operation with automatic cut-off at the end of each sampling cycle. The outdoor air sampling cassette serves as a baseline measurement for the quantity and type of local fungi present in the environment. The indoor cassettes allow you to test "suspect" areas in the home or business. After sampling, simply return the kit and paperwork to our laboratory for a complete microscopic analysis. (Box has pre-paid mailing label included.) Within one week, you will receive a detailed and interpretive report of allergens and molds that are present in the home or business.

All laboratory fees are included with the purchase of this kit.

Call toll free for more information 866-743-8563

PART #	PRODUCT DESCRIPTION
EXAMINAIR PROFESSIONAL ALLERGEN AND MOLD TEST KIT	
1700000	ExaminAir Professional Allergen and Mold Test Kit - Call toll free for more information 866-743-8563

Ideal Product for Home Inspectors!

Disposable Non-Viable Cassettes, Accessories & Kits

Patent # 6,463,814

Allergenco-D

NEWLY RELEASED STUDY!

Please call or visit emssales.net to receive a comprehensive Allergenco-D study conducted by the University of Cincinnati's Environmental Health Foundation

120515 & 120517



120518

The Allergenco-D sampling cassette was developed for the sampling and collection of aeroallergens and bioaerosols for quantitative analysis of mold spores, pollen, skin fragments, insects, combustion particles, toners, environmental dusts, construction dusts and other airborne particulates. The Allergenco-D employs a patented laminar flow venturi which provides higher readable collection efficiency as well as a more well defined impaction trace, helping to reduce analysis time.

Laminar Flow Venturi allows for the most uniform slit deposit in the industry
Patented Design
Higher Collection Efficiency Than Other Slit Impactors
Inner Wall Sampling Attachments Available
No Luer Adaptors Necessary - tubing fits directly onto cassette
Compatible with all portable pumps designed to fit competitors cassettes

Allergenco-D Deluxe Kit

120512



- ems MegaLite Pump w/ Mounted 3-30LPM Rotameter
- 10 Pk Allergenco-D
- 6ft of Vinyl Tubing
- IAQ Stand
- 20 Vacuum Dust Cassettes, Carpet Templates & Zip Bags
- 10 Wall Checks
- 5 Mold Swabs
- 10pk Mold Tape Slides
- Heavy Duty Case

Allergenco-D Basic Kit

120513



- ems MegaLite Pump w/ Mounted 3-30LPM Rotameter
- 10 Pk Allergenco-D
- 6ft of Vinyl Tubing
- IAQ Stand
- Heavy Duty Case

PART #	PRODUCT DESCRIPTION	LIST PRICE	ems PRICE
ALLERGENCO-D CASSETTES, KITS AND ACCESSORIES			
120515	Allergenco-D Cassettes / 50 Pack	\$299.00	\$249.00
120517	Allergenco-D Cassettes / 10 Pack	\$75.00	\$59.00
120518	Allergenco-D Inner Wall Samplers / 10 Pack	\$12.95	\$9.95
120512	Allergenco-D Deluxe Kit	\$429.00	\$379.00
120513	Allergenco-D Basic Kit	\$329.00	\$249.00

Disposable Non-Viable Cassettes, Accessories & Kits

cyclx-d



Utilizing a 360-degree impaction chamber, the cyclx-d was pioneered to evenly and quantitatively collect aeroallergens. With a flow rate of 20 liters per minute the capture and actual collection efficiency of the cyclx-d exceeded 50% at d50=1u compared to the industry norm of 2.5 microns!

“The impactor collection efficiency was found to be higher than that of the Air-O-Cell™ and Burkard samplers.”

-The University of Cincinnati Environmental Health Foundation

cyclx-d Deluxe Kit

- (1) ems MegaLite Pump w/ mounted 3-30LPM Rotameter
- (1) 10 Pack cyclx-d
- (1) 6ft of Vinyl Tubing
- (1) IAQ Stand
- (20ea) Vacuum Dust Cassettes, Carpet Templates & Zip Bags
- (10ea) Wall Checks
- (5ea) Mold Swabs
- (10) Mold Tape Slides
- (1) Heavy Duty Case

#120145



#120141

cyclx-d Kit

- (1) ems MegaLite Pump w/ mounted 3-30LPM Rotameter
- (1) 10 Pack cyclx-d
- (1) 6ft of Vinyl Tubing
- (1) Heavy Duty Case
- (1) IAQ Stand



Air-O-Cell™ Deluxe Kit

#120510

- (1) ems MegaLite Pump w/ mounted 3-30LPM Rotameter
- (1) 10 Pack Air-O-Cell™
- (1) 6ft of Vinyl Tubing
- (1) IAQ Stand
- (20ea) Vacuum Dust Sampling Cassettes, Carpet Templates & Zip Bags
- (5ea) Mold Swabs
- (10) Mold Tape Slides
- (1) Heavy Duty Case

Air-O-Cell™ Kit



#120509

- (1) ems MegaLite Pump w/ mounted 3-30LPM Rotameter
- (1) 6ft Length of Tubing
- (1) 10 Pack Air-O-Cell™
- (1) Heavy Duty Case
- (1) IAQ Stand

Air-O-Cell™ Cassettes

The Air-O-Cell™ is a unique air sampling cassette specifically designed for the rapid collection of a wide range of airborne aerosols including mold spores, pollen, insect parts, skin cell fragments, fibers (e.g. asbestos, fiberglass, cellulose, clothing fibers, etc.) and inorganic particulates (e.g. ceramic, fly ash, copy toner, etc.).



PART #	PRODUCT DESCRIPTION	LIST PRICE	ems PRICE
cyclx-d CASSETTES, KITS AND ACCESSORIES			
120135	cyclx-d 50 Pack	\$299.00	\$269.00
120137	cyclx-d 10 Pack	\$69.00	\$65.00
120138	cyclx-d Inner Wall Samplers (10 each)	\$12.95	\$9.95
120141	cyclx-d Kit	\$329.00	\$279.00
120145	cyclx-d Deluxe Kit	\$429.00	\$359.00
Air-O-Cell™ CASSETTES, KITS AND ACCESSORIES			
120503	Air-O-Cell™ Cassettes / 10 Pack	\$79.00	\$75.00
120505	Air-O-Cell™ Cassettes / 50 Pack	\$329.00	\$287.50
120506	Air-O-Cell™ Wall Sampling Attachment / 10 Pack	\$12.95	\$9.95
120509	Air-O-Cell™ Kit	\$349.00	\$339.00
120510	Air-O-Cell™ "Deluxe" Kit	\$449.00	\$429.00

Reusable Non-Viable Samplers

CyClex

Reusable and more
cost effective than
disposable impactors.



The CyClex utilizes a unique 360 degree aluminum impaction chamber designed to enhance performance and efficiency associated with Bioaerosol sampling. The CyClex has the ability to evenly and qualitatively collect aeroallergens such as pollens, mold and fungal spores, fibers, dander, insect components and other airborne contaminants. In addition, the CyClex has the distinguishing feature of having the ability to collect air and inner wall samples, making it the most cost effective and feasible impaction device on the market.

Advantages:

- Cost effective
- Convenient and easy to use.
- The CyClex has the ability to collect below 1 micron.
- ONLY non-viable sampler in which calibration can be checked with a NIST certified primary standard (i.e. DryCal, Gilibrator, etc.).
- 360 degree design ensures optimal sampling collection.
- Threaded lid allows for effortless opening and slide removal.
- The CyClex may be attached to any high volume pump capable of pulling 20 liters/minute.

#120155 CyClex Standard Kit

- (1) CyClex Impactor
- (1) ems MegaLite pump w/
mounted 3-30LPM
Rotameter
- (1) 6ft length of tubing
- (1) IAQ Stand
- (1) Heavy Duty Case



#120160 CyClex Deluxe Kit

- (1) CyClex Impactor
- (1) ems MegaLite pump w/ mounted 3-30LPM Rotameter
- (1) Multi-accessory Adapter Cap
- (25 ea) Wall Probes with Debris Cap
- (1) 100ft of Vinyl Tubing (enough for 25 samples)
- (1) Stud Sensor
- (1) Hand Drill w/ 1/4" Drill Bit
- (1) Debris Cap Removal Rod
- (25 ea) Prepared Slides with 25 Slide Mailers
- (20 ea) Vacuum Dust Sampling Cassettes
- (20 ea) Vacuum Templates
- (20 ea) Vacuum Zip Bags
- (1) IAQ Stand
- (1) Heavy Duty Case

PART #	PRODUCT DESCRIPTION	LIST PRICE	ems PRICE
CYCLEX BIOAEROSOL IMPACT SAMPLER & KITS			
120150	CyClex BioAerosol Impact Sampler Only	\$299.00	\$259.00
120155	CyClex Kit w/ ems MegaLite Pump, 3-30LPM Rotameter, Tubing, Stand & Case	\$649.00	\$595.00
120160	CyClex Deluxe Kit (see above for complete description)	\$995.00	\$949.00
CYCLEX WALL KIT			
120163	I.W.S. (Inner Wall Sampling) System for CyClex	\$229.00	\$189.00
CYCLEX ACCESSORIES			
120167	Multi-Accessory Adapter (for use w/ IWS & Calibration)	\$149.00	\$129.00
120103	Telescopic Sampling Stand for IAQ Impactors	\$39.95	\$37.95
120104	ems MegaLite IAQ Pump, Mounted 3-30LPM Rotameter w/ Tubing	\$249.00	\$169.00
120910	Stud Finder Only	\$14.95	\$14.95
120909	Hand Drill	\$14.95	\$14.95
120908	Drill Bit for Hand Drill	\$8.95	\$8.95
120921	Debris Cap Removal Rod	\$8.95	\$6.95
120923	Replacement Wall Probes for IWS System (25 each)	\$24.95	\$19.95
120926	1ea Prepared Slide with slide mailer **No Cross Contamination**	\$2.50	\$2.50
120927	25ea Prepared Slides (Individually Packaged w/ Slide Mailers) **No Cross Contamination**	\$49.95	\$39.95
400169	25 Capacity Slide Box Only	\$4.75	\$3.95
400170	5 Capacity Slide Mailers	\$0.99	\$0.69
200141	Tubing, 1/4" x 3/8" OD x 100'	\$25.00	\$19.95



#120163 CyClex Wall Kit

- (1) CyClex Multi-Accessory Adapter Cap
- (25ea) Wall Probes w/ Debris Cap
- (1) 100ft of Vinyl Tubing (enough for 25 samples)
- (1) Stud Finder
- (1) Hand Drill w/ 1/4" Drill Bit
- (1) Debris Cap Removal Rod
- (25ea) Prepared Slides w/ 25 Slide Mailers
- (1) Heavy Duty Case



**now prepared with posi-track
bar coded slides!**

Prepared Slides (120926 & 120927)

Reusable Non-Viable Samplers

ALLERGENCO MK III timed sequential sampler



At the end of the sampling time, a quick procedure to prepare the slide for microscopical reading only requires placing a few drops of Calbera's stain onto the collecting surface, a glass cover slip over traces. The slide is then ready for observation/counting microscopically. No sticky tapes, or tiny rods to deal with.

Quick Facts:

Industry Standard for 10 Years

Collects aeroallergens (i.e.) pollens, mold, dander, dust mites, etc.

Timed sequential Sampler – Up to 24 samples on one slide

Program the sampler to pull samples from minutes to days apart.

Fully self contained with AC or DC operation

ems Allergenco Calibration Rotameter



120120-Rotameter

BioSIS Slit Impaction Air Sampler

The BioSIS was developed for the sampling and collection of air-borne contaminants for quantifiable analysis of pollen, mold spores, skin fragments, insects, combustion particles, toners, environmental dust, construction dust and other air-borne particulates. Employing a slit impaction sampling technology, the BioSIS was created to answer the need for a low cost, reusable, high quality, bioaerosol sampler for aeroallergen studies.

Advantages:

Reusable two piece aluminum design offers greater durability and reduces sampling costs.

The laminar flow venturi produces a more defined impact zone.

Allows for quick and easy clean up between samples to prevent cross contamination in the field.

Uses conventional high volume vacuum pumps and standard 25mm X 75mm microscope slides.

Patent # 7,051,605



120146

PART #	PRODUCT DESCRIPTION	LIST PRICE	ems PRICE
ALLERGENCO MKIII KITS			
120119	Allergenco MK-III Sampler Deluxe Kit Includes: Unit, AC Power Supply, Battery, Battery Charger, 25 Prepared Slides & Carry Case	\$1195.00	\$1195.00
120120	Allergenco Basic Package Includes: Unit, AC Power Supply, 25 Prepared Slides & Carry Case	\$1095.00	\$995.00
ALLERGENCO MKIII ACCESSORIES			
120120-ROTAMETER	ems Allergenco Calibration Rotameter	\$89.95	\$79.95
120121	Unit Power Supply	\$29.95	\$29.95
120123	Battery System (Battery, Charger & Bag)	\$199.00	\$199.00
120122	Customized Case for Allergenco	\$129.00	\$129.00
120130	Bottle of Silicone Grease	\$6.95	\$6.95
120126	25 Prepared Allergenco MKIII Slides & Mailers	\$49.95	\$39.95
BIOISIS SLIT IMPACTION AIR SAMPLER			
120146	BioSIS Slit Impaction Air Sampler (impactor only) (BioSIS kits are also available....PLEASE CALL FOR COMPLETE DETAILS!)	\$299.00	\$259.00
120927	25 Prepared BioSis Slides & Mailers	\$49.95	\$39.95

Viable Samplers, Accessories & Kits



120101

ems E6 Reusable Single-Stage VIABLE Sampler

The single-stage bioaerosol impaction sampler is an aluminum device held together by three spring clamps and sealed with o-ring gaskets. The impactor stage contains 400 precision-drilled holes. When air is drawn through the sampler, multiple jets of air on the stage direct any airborne particles toward the surface of the agar collection surface. To ensure sample integrity the ems E6 must be used with a pump capable of 28.3Lpm.

PART #	PRODUCT DESCRIPTION	LIST PRICE	ems PRICE
E6 VIABLE SAMPLER, KITS AND ACCESSORIES			
120101	ems E6 Sampler (Impactor Only)	\$399.00	\$349.00
120103	Telescopic Sampling Stand for ems E6	\$39.95	\$37.95
120107	ems E6 Sampler Kit (Includes Impactor, ems MegaLite Pump, Rotameter, Stand & Carrying Case)	\$679.00	\$499.00
120108	ems E6 Sampler Kit (Includes Impactor, Gast Pump, Rotameter, Stand & Carrying Case)	\$799.00	\$699.00
120110	Calibration Leak Test Kit (compatible with ems E6, Aerotech A6, Andersen N6)	\$15.95	\$14.95
BIOCASSETTE™ DISPOSABLE CULTURABLE AIR SAMPLER			
120102	BioCassette (5 Pack) - Please note: This product has special shipping requirements.	\$29.75	\$29.75



120107



The E6 utilizes standard agar plates.

BioCassette™ DISPOSABLE CULTURABLE CASSETTE

The BioCassette™ developed by Environmental Microbiology Laboratory, Inc. (EMLab™) is a new device for culturable air sampling that is designed to both simplify the sampling process and protect the integrity of samples from sampling through analysis. The BioCassette™ combines the agar plate and sampling device into a single disposable cassette in a package that is roughly the size of a standard 90mm petri dish.

Since the agar plate and the sampling device are integrated into one unit, the BioCassette™ is both simpler and faster to use than a device that uses a separate petri dish. The Andersen™ sampler has a recommended cleaning procedure that should be carried out prior to each sample. The sampler then requires disassembly to load the media and reassembly prior to sampling. And then, of course, disassembly to remove the petri dish and reassembly prior to moving or storing the sampler. This is followed by the need to secure the petri dish lid with parafilm or similar laboratory tape. The BioCassette™ requires only the removal of a plastic plug and sealing label for sampling. Replace these components after sampling and the device is ready to ship to the laboratory.



120102

This product has special shipping requirements. Please call for details.

IAQ Accessories

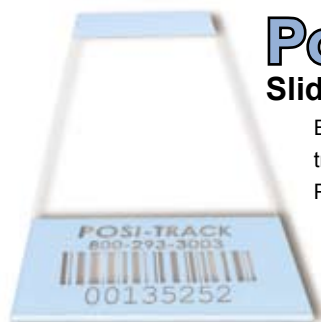
Mold Tape Slide™



NEW THINNER MOLD TAPE DESIGN!

Ideal for surface sampling
Easier to handle than tape.
90 degree flexibility
Uniform sample size
Individually packaged to protect slides during transport
Prevents cross contamination
Bar-coded serial numbers for easy traceability

Catalog # 120904



Posi-Track Slides

Easier and more accurate tracking with new barcoded Posi-Track slides!



Catalog # 120901
Mold Check Swabs 50/pk



Mold Tape Lift Kit
Catalog # 120903

ems Dust Collector Kit



900199

- EuroPro Shark Handheld Vacuum with attachments and case!
- 10 ems Dust Collectors
- 10 zip bags (for shipping Dust Collector to lab after collection)
- 8 Mold Tape Lifts, 8 Microscope slides and 4, 2pk mailers
- 10 Mold Swabs



Catalog # 900202
Vacuum Dust Kit
20ea - 25mm 0.45u Molded Sampler
20ea - Zip Bags
20ea - Templates
20ea - Labels

PART #	PRODUCT DESCRIPTION	LIST PRICE	ems PRICE
INDOOR AIR QUALITY ACCESSORIES			
120103	Telescopic Sampling Stand for Impactors	\$39.95	\$37.95
120901	Mold Check Swabs 50/pk	\$29.95	\$24.95
120903	Mold Tape Lift Kit (Includes 4 Tape Lifts, 4 Microscope Slides & 2, 2pk mailers)	\$3.49	\$3.29
120904	Mold Tape Slide (10 slides per pack, individually packaged with mailers)	\$7.99	\$6.99
120926	1 ea Prepared Slide with Slide Mailer (Used with Cyclex & BioSIS impactors)	\$2.50	\$2.50
120927	25 ea Prepared Slides (Individually Packaged w/ Slide Mailers.) Used with Cyclex & BioSIS impactors	\$49.95	\$39.95
120126	25 ea Prepared Slides (Individually Packaged w/ Slide Mailers.) Used with Allergenco-MKIII & MK4 Samplers	\$49.95	\$39.95
AIR CURRENT TUBES			
600171	Draeger Air Current Tubes (10 Tubes) (Non-Irritant Smoke)	\$59.00	\$55.00
600172	Draeger Air Current Tube Kit (10 Tubes) (Non-Irritant Smoke)	\$99.50	\$99.50
VACUUM DUST SAMPLING KITS			
900199	ems Dust Collector Kit	\$189.00	\$169.00
900200	ems Dust Collector (1 Collector / Filter)	\$8.95	\$6.95
900202	Vacuum Dust Sampling Kit - 20 ea. MCE (25mm 0.45u MCE Includes 20ea Samplers, Templates, Zip Bags& Labels)	\$49.95	\$39.95
900205	10cm x 10cm Templates 250ea	\$49.00	\$45.00

IAQ Accessories

PART #	PRODUCT DESCRIPTION	LIST PRICE	ems PRICE
TUBING & ACCESSORIES			
200140	Tubing, Tygon 1/4" ID x 3/8" OD x 50'	\$65.00	\$55.00
200141	Tubing, 1/4" ID x 3/8" OD x 100' (Generic Brand)	\$25.00	\$19.95
200157	Tubing, 1/8" ID x 1/4" OD x 100' (Generic Brand)	\$25.00	\$19.00
GLOVES			
700110-L	Nitrile Gloves , non-latex, powder free, (100/pk) Large	\$12.95	\$8.95
700110-XL	Nitrile Gloves, non-latex, powder free, (100/pk) X-Large	\$12.95	\$8.95
700108-S	Latex Gloves w/ Powder 100/ea (Small)	\$12.95	\$11.95
700108-M	Latex Gloves w/ Powder 100/ea (Medium)	\$12.95	\$11.95
700108-L	Latex Gloves w/ Powder 100/ea (Large)	\$12.95	\$11.95
700109-S	Latex Gloves w/o Powder 100/ea (Small)	\$12.95	\$11.95
700109-M	Latex Gloves w/o Powder 100/ea (Medium)	\$12.95	\$11.95
700109-L	Latex Gloves w/o Powder 100/ea (Large)	\$12.95	\$11.95

TYGON Tubing



200140

Nitrile Gloves



700110-L, 700110-XL



Superior Sampling Cassettes Proudly Manufactured in the USA



proud to manufacture in the USA



IAQ SAMPLING PUMPS, ACCESSORIES, TIMERS & CALIBRATION EQUIPMENT



IAQ Sampling Pumps and Accessories 18-20

Pump Timers 21

IAQ Calibration Equipment & Accessories 22



IAQ Sampling Pumps and Accessories

ems MegaLite

PERFECT FOR IAQ TESTING

Standard Features:

- Mega Lightweight
- Compact for easy transportation
- Mega Quiet (70% quieter)
- Mega Long-Life
- Suction Cup Feet

Specifications:

Weight: 4.5 lbs
Length: 5 in
Height: 4 in
Sound: 75 db



1 YEAR
WARRANTY

120104-filter

optional MegaLite Contamination filter

Great for Micro5, cyclex-d, Allergenco-D, Air-O-Cell™, Cyclex, BioSIS, E6, N6 & A6 impactors!

ems Rotary Vane Pump

• COMES W/ MOUNTED ROTAMETER

- Most durable and long-lasting rotary vane pump on the market. Internal metal parts are now stainless steel.
- On/Off switch located on the housing, not the cord.
- Internal muffler chamber

1 YEAR
WARRANTY

Specifications:

Weight: 12.25 lbs
Length: 7.75 in
Height: 4.75 in
Width: 5 in
Sound: 69 db



120106-EMS

PART #	PRODUCT DESCRIPTION	LIST PRICE	ems PRICE
INDOOR AIR QUALITY HIGH VOLUME PUMPS			
120104	ems MegaLite 3-30lpm IAQ Pump w/ Tubing & Rotameter	\$249.00	\$169.00
120104-filter	MegaLite Cross Contamination Kit	\$19.95	\$14.95
120104-mflr	MegaLite Free Flow Exhaust Muffler	\$.99	\$.75
300122	MegaLite Plastic Back Plate	\$8.99	\$8.99
300126	MegaLite Plastic Face Plate	\$8.99	\$8.99
300127	MegaLite Feet (Suction Cups)	\$3.50	\$3.50
300128	MegaLite Feet Isolators	\$1.20	\$1.20
120106-EMS	ems Rotary Vane Pump w/ Mounted Rotameter	\$299.00	\$249.00

IAQ Sampling Pumps and Accessories

1700001


Standard Features & Specifications:

Comes Complete with Charger
(12-15 Samples per full Charge)
Built-In Handle
Weight: 2lbs
Height: 3"
Width: 4 3/4"
Length: 7 1/4"

5 liters **5** minutes

Examinair Micro5 Pump

Designed for use with Micro5 Air Sampling Cassettes

Quantity Pricing Available

This re-chargeable, compact pump is ready to use and features EASY operation with automatic cut-off at the end of each 5 MINUTE sampling cycle. The durable design offers a built-in handle, lightweight casing, and conveniently mounts to a tripod. To guarantee quality assurance, EVERY ExaminAir Micro5 pump undergoes a pre-calibration certification.

CALIBRATION ROTAMETER

ExaminAir Mico5 Pump Calibration Rotameter (1-5 Liters)



120120-P

Buck BIOAIRE Pump

120164



- Small Lightweight and compact
- Battery powered and rechargeable
- 5 hour run time at 15LPM
- Convenient timer for 1, 2, 5, 10 minute samples and Continuous Mode
- End-of-cycle audible & visual
- Easy keypad calibration without tools

Accepts Allergenco-D, Buck BioAire and Air-O-Cell™ cassettes

Gast 3-30Lpm IAQ Pump

Great for Micro5, cyclex-d, Allergenco-D, Air-O-Cell™, Cyclex, BioSis, E6, N6 & A6 impactors!


Standard Features:

- Extremely Quiet
- Durable & Economical
- Rotary Vane
- Internal Muffler Chamber
- No Glass Jars
- Adjustable flow 3LPM - 30LPM
- 1/10 hp Motor
- 10 lbs



120106

MINI-BUCK CALIBRATOR M-30B

500112



Use W/ the Buck BioAire Pump Only

PART #	PRODUCT DESCRIPTION	LIST PRICE	ems PRICE
INDOOR AIR QUALITY HIGH VOLUME PUMPS			
1700001	Examinair Micro5 Pump	\$149.00	\$149.00
120106	Gast 3-30 lpm IAQ Pump w/ Tubing & Rotameter	\$349.00	\$299.00
120120-P	ExaminAir Mico5 Pump Calibration Rotameter (1-5 Liters)	\$89.95	\$79.95
120164	Buck BIOAIRE Pump	\$679.00	\$579.00
500111	Buck Calibration Soap 8 ounces	\$25.00	\$25.00
500112	mini-Buck Calibrator M-30B (Use W/ the Buck BioAire Pump Only)	\$970.00	\$970.00
500113	mini-Buck Calibrator M-30 (Primary Standard)	\$950.00	\$950.00

IAQ Sampling Pumps and Accessories

ems AC/DC IAQ Pump



120158

Standard Features:

- NIST certifiable – Connects “directly to Bios Defender or any primary standard”
- 12 volt battery eliminates the need to carry external power cords
- Voltage indicator monitors battery charge
- Flow capability of 5-22 liters per minute
- “Whisper” quiet performance
- Convenient storage compartments
- Safety reset switch
- Built in rotameter with adjustable flow control
- Supplied charging system
- AC or DC operation (battery can be charged when operating in AC mode!)
- Quick 1 ½ hour battery charge
- Averages 3 hours of performance between charges
- HEPA Filtered exhaust system (internally filtered exhaust does not disturb sampling environment - NO CROSS CONTAMINATION ISSUES!)
- User Friendly programmable timer for hands off operation
- Color changing timer indicates Run/Stop operation mode with sample time
- Lightweight – weighs only 15lbs.
- Durable carry case
- Six months warranty on parts & labor

**Completely
Battery
Powered!**

ems DC Pump



120157

both compatible with
**CyClex, cyclex-d,
Micro5, Allergenco-D,
Air-O-Cell™, BioSIS**

or any other nonrestrictive sampling device.

Standard Features:

- 12 volt battery eliminates the need to carry external power cords
- Voltage indicator monitors battery charge
- Flow capability of 5-30 liters per minute
- Quiet performance
- Convenient storage compartments
- Safety reset switch
- Built in rotameter with adjustable flow control
- Built in charging system
- Durable case
- Averages 2 hours of performance between charges
- Six months warranty on parts & labor
- Digital Timer
- NIST certifiable

PART #	PRODUCT DESCRIPTION	LIST PRICE	ems PRICE
AC/DC IAQ PUMP			
120158	AC/DC IAQ Pump	\$649.00	\$599.00
120157	DC Pump	\$699.00	\$639.00

Pump Timers

ems heavy-duty Count-Down TIMER 120 volt



120118

Features:

- Automatic Shut-Off
- No Programming Necessary
- 1 Button Operation
- 120 Volts
- Digital Display
- Multiple Outlets
- Durable
- Lightweight
- Convenient
- Includes 8' power cord

Programmable Timer Switch



120117

Features:

- Program up to 12 On/Off switchings per day or week
- Program for individual days or Mon-Fri, Mon-Sat, Mon-Sun, Sat-Sun
- Easy to install and operate
- Three prong plug and socket for connection
- LCD displays day, time and program function
- "Override" interrupts existing program
- Built-in time clock with 1 yr battery back up
- Maintains memory for 1 yr
- UL listed

ems effortless count-down timer



120116

- Simple One button operation
- Select the desired run time from 1min to 24 hours push the start button – its that simple
- The unit simply counts down from selected time. No entering in time, hour, date or start, stop as with competitive products
- Integrated battery retains selected time so that user input is necessary only for changes
- Perfect for using ems MegaLite, ems Rotary Vane, Gast and Thomas pumps.
- No more getting down on your knees to see the display – the display on this unit swivels to allow for upright viewing.

PART #	PRODUCT DESCRIPTION	LIST PRICE	ems PRICE
PUMP TIMERS			
120117	Programmable Timer Switch	\$49.95	\$39.95
120116	ems Effortless Countdown Timer (10 amp maximum)	\$39.95	\$35.00
120118	ems Heavy Duty Countdown Timer (15 amp maximum)	\$89.95	\$79.00

IAQ Calibration Equipment & Accessories

Bios

Driving a Higher Standard
in Flow Measurement™

Defender Primary Flow Calibrator

NEW!



Announcing the new Bios Defender, the “next generation” of the very popular DC-Lite and DC-2 primary calibrators. The Bios Defender is the existing DryCal® technology, evolved. The revolutionary dry flow meter design provides users with a primary flow standard for industrial hygiene, environmental & laboratory applications.

The Bios Defender, at a Glance

Accuracy

- Proven – percent of reading accuracy is supported by ISO 17025 accreditation by NVLAP of NIST
- Integrated temperature sensors and pressure transducers – placed directly in the flow stream for optimum standardized results (Bios Defender 520)

Convenience

- Lighter and more robust than its predecessors – ideal for field use
- Housed in a molded case with rubber handgrips for a better feel and a sleeker, more contemporary look
- Navigation menu and a large, illuminated graphical display with zoom feature, rated for extreme cold operation, down to -20 degrees C
- RoHS compliant for Europe (Restriction of Hazardous Substances)

Flexibility

- Choose between flow units – mL, L, cc, or cfm
- Include up to one hundred readings in a group average
- Take individual readings, continuous hands-free readings, or set to read in time intervals, anywhere from one minute up to sixty minutes between readings
- Software – an integrated serial PC interface and software for bullet-proof transfer of flow data to a text file, and automatic recording and graphing of flow measurements. A software upgrade is available for the creation of air sampler profiles, sampler calibration data recording and storage, calibration report printing, and other capabilities

PROVEN
DryCal®
TECHNOLOGY

1 YEAR
WARRANTY



500315
(case only)

PART #	PRODUCT DESCRIPTION	LIST PRICE	ems PRICE
BIOS DRYCAL® DEFENDER PRIMARY AIR FLOW METERS AND ACCESSORIES			
500301	Bios DryCal® Defender 510-L 5ml - .5 liters per minute	\$1,300.00	\$1,295.00
500305	Bios DryCal® Defender 510-M 50ml - 5 liters per minute	\$1,300.00	\$1,295.00
500311	Bios DryCal® Defender 510-H 300ml - 30 liters per minute	\$1,350.00	\$1,345.00
500315	Custom Pelican Case for Bios DryCal® Defender	\$89.95	\$79.95
500114	18" Calibrator Connection Tubing	\$2.99	\$2.99

Secondary Calibrators

PART #	PRODUCT DESCRIPTION	LIST PRICE	ems PRICE
PRECISION & ECONOMY FIELD ROTAMETERS & ACCESSORIES			
500159	ems Economy Field Rotameter, 2 - 20 LPM (Includes 2 Brass Barb Adapters)	\$39.00	\$35.00
500163	ems Economy Field Rotameter, 3 - 30 LPM (Includes 2 Brass Barb Adapters)	\$39.00	\$35.00
200117	Brass Barb Adapter for Rotameter 1/8"	\$1.50	\$1.25
500151	Precision Rotameter, 4.2-42LPM	\$195.00	\$195.00



Precision & Field Rotameters

IAQ INSTRUMENTS



Infrared Cameras	24-25
Borescope Kits & Accessories	26
Particle Counters	27-28
Gas Monitors/Gas Detection Tubes & Kits	29-34
Moisture Meters	35-39
Temperature/ Relative Humidity Meters	40-41
Psychrometer	42
Infrared Laser Thermometers	42
Anemometers	43



Infrared Cameras



ThermaCAM BCAM Infrared Camera

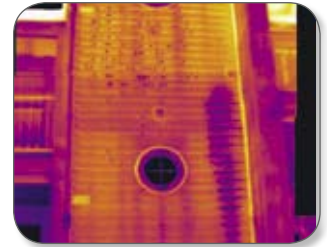
Ultra-compact &
Affordable



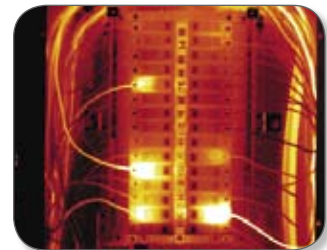
120524

The BCAM® infrared camera offers a non-invasive means of monitoring and diagnosing the conditions of buildings - providing immediate high-resolution thermal imagery, revealing potential structural and moisture issues, energy efficiency and even rodent or pest discovery.

- Find Problems Fast
- Rugged, Ergonomic & Lightweight
- Flexible JPEG Image Storage
- Pinpoint Problems With Precision
- View Sensitive Thermal Images
- Download and Document
- Smart Power Management
- Automatic Color Alarm
- Fast Detection For Fast Action



Leak



Circuit Breaker

ThermaCAM BCAM SD Infrared Camera

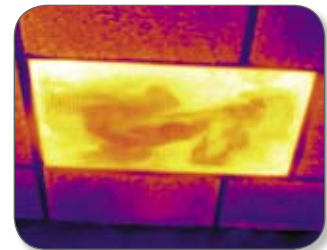
Sharper
images and
more image
storage. 33%
improved
image quality!



120524-SD

The new and improved SD model of the BCAM offers more image storage, more image quality and more post-processing capabilities. The BCAM SD infrared camera provides a non-invasive means of monitoring and diagnosing the conditions of buildings.

- Stores up to 1,000 JPEG Images
- Improved Crisp, High Quality Images
- 7 Hour Battery Operating Time
- Bright 3.5" LCD display
- Built-in Laser LocatIR™
- Includes New Powerful QuickReport Software
- Easy-to-Operate
- Dew Point, Insulation & Color Alarm Features



Cold Air



Termites

ThermaCAM B2 Infrared Camera

Ultra-compact, lightweight infrared
camera for building inspections



120525

The B2 infrared cameras offer a noninvasive means of monitoring and diagnosing the condition of buildings. They provide immediate documentation of:

- As-built or postrestoration quality
- Post-casualty cause and origin data
- Plumbing and building envelope water leakage
- Post-flood and fire water-damaged assessment
- Energy use inefficiency, roofing
- Rodent or pest discovery
- Auto shut-off
- Comes with 2 lithium batteries



Pipe Block

Infrared Cameras

ThermaCAM

BCAM SD

BCAM

B2

Imaging Performance			
Field of view (min focus) with US FPA	Fixed 25° x 25°(0.3m)	Fixed 25° x 25°(0.3m)	Exchangable 25° x 19°(0.3 m) , 12° x 9°(1.2 m) or 45° x 36°(0.1 m);
Thermal sensitivity	< 0.15 °C at 25 °C	< 0.15 °C at 25 °C	< 0.10 °C at 25 °C
Detector type with US FPA	Focal Plane Array (FPA), uncooled microbolometer, 120 x 120 pixels	Focal Plane Array (FPA), uncooled microbolometer, 120 x 120 pixels	Focal Plane Array (FPA), uncooled Vanadium Oxide micro bolometer, 160 x 120 pixels - 50/60 Hz
Digital zoom	N/A	N/A	N/A
Spectral range	7.5 TO 13 µm	7.5 TO 13 µm	7.5 TO 13 µm
Image presentation			
Video output	MPEG-4 over USB	MPEG-4 over USB	NTSC, standard RCA composite video
LCD Display	3.5 inch color LCD - 240 x 240 pixels	3.5 inch color LCD - 240 x 240 pixels	2.5 inch color LCD - 320 x 240 pixels
Image controls	level, span, auto adjust (continuous/manual)	level, span, auto adjust (continuous/manual)	level, span, auto adjust (continuous/manual)
Palettes	Color & B/W	Color & B/W	Iron, Rainbow, HC Rainbow, B/W, B/W inv,
Measurement			
Temperature range	-.10°C to 100°C (+14°F to +212°F)	-.10°C to 100°C (+14°F to +212°F)	-.20°C to 100°C (-4°F to +212°F)
Measurement Functions			
Spot meters	1 Fixed	1 Fixed	1 Movable. Area min/max/average
Color Alarm	Above or Below	Above or Below	Above or Below
Audible Alarm	No	No	Yes
Dew Point Alarm	Yes	No	Yes
Insulation Alarm	Yes	No	No
Image Storage			
Digital storage functions	Store, Delete all images, Delete image, Open	Store, Delete all images, Delete image, Open	Freeze, Store, Delete all images, Delete image, Open
Image storage capacity	1000JPEG images, removable SD Card (128MB - included)	50 JPEG images	>200 Radiometric JPEG images
Software			
ThermaCAM QuickView software	ThermaCAM QuickView™ software	ThermaCAM QuickView™ software	ThermaCAM QuickView software
Hardware interface	USB (Cable included)	USB (Cable included)	RS-232 (optional) and USB (Cable included)
Laser Pointer			
Laser type	Class 2 Semiconductor AlgalnP Diode Laser: 1mW/635 nm (red)	Class 2 Semiconductor AlgalnP Diode Laser: 1mW/635 nm (red)	Class 2 Semiconductor AlgalnP Diode Laser: 1mW/635 nm (red)
Battery			
Batteries Included	1	1	2
Type	Li-Ion	Li-Ion	Li-Ion
Operating time	7 hours, Display shows battery status	7 hours, Display shows battery status	2 hours, Display shows battery status
Power saving	Automatic shutdown (user-selectable)	Automatic shutdown (user-selectable)	Automatic shutdown and sleep mode (user-selectable)
Power/Charger	In camera, AC adapter or 12V from car with optional 12V cable	In camera, AC adapter or 12V from car with optional 12V cable	In camera, AC adapter or 12V from car with optional 12V cable
2 Bay Battery Charger	N/A	N/A	Included
Other Features			
Set-up controls	Date/time, Language (English, Spanish), Info field, LCD intensity (high/normal/low), power down	Date/time, Language (English, Spanish), Info field, LCD intensity (high/normal/low), power down	Date/time, Language (English, Spanish), Scale, Info field, LCD intensity (High/Normal/Low)
Environmental			
Operating temp. Range	-.15° C to +50° C (+5° F to 122° F)	-.15° C to +50° C (+5° F to 122° F)	-.15° C to +45° C (+5° F to 113° F)
Storage temp. Range	-.20° C to +70° C (-4° F to 158° F)	-.20° C to +70° C (-4° F to 158° F)	-.40° C to +70° C (-40° F to 158° F)
Water and dust resistant (encapsulation)	IP 54	IP 54	IP 54
Humidity	Operating and Storage 20% to 80%, non-condensing, IEC 359	Operating and Storage 20% to 80%, non-condensing, IEC 359	Operating and Storage 20% to 80%, non-condensing, IEC 359
Shock	25G, IEC 68-2-29	25G, IEC 68-2-29	25G, IEC 68-2-29
Vibration	2G, IEC 68-2-6	2G, IEC 68-2-6	2G, IEC 68-2-6
Physical Characteristics			
Weight	<1.25 lbs. (0.55kg), including battery	<1.25 lbs. (0.55kg), including battery	<1.5 lbs. (0.7kg), including battery
Size (LxWxH)	243mm x 81mm x 103mm (9.6" x 3.2" x 4.1")	243mm x 81mm x 103mm (9.6" x 3.2" x 4.1")	265mm x 80mm x 105mm (10.4" x 3.2" x 4.1")
Tripod mounting	Standard, 1/4" - 20	Standard, 1/4" - 20	Standard, 1/4" - 20

PART #	PRODUCT DESCRIPTION	LIST PRICE	ems PRICE
INFRARED CAMERAS			
120524	Flir ThermaCAM BCAM (Includes FIXED 25° Lens)	\$5,750.00	\$5,750.00
120524-SD	Flir ThermaCAM BCAM SD (Includes FIXED 25° Lens.)	\$6,750.00	\$6,750.00
120525	Flir ThermaCAM B2 - interchangeable lenses: price includes one lens (Choose from standard (9°), wide-angle (19°) or telephoto (34°) lenses. Accommodates all three, additional lenses can be purchased for maximum versatility	\$9,950.00	\$9,950.00

Borescope Kits & Accessories

COLOR BORESCOPE

The Ultimate Inspection Tool



120905 & 120906

Based on innovative new fiberoptic technology, the flexible cable fits holes as small as 1/2 inch diameter allowing you to look behind walls, down into drains, inside engines, or hundreds of places without costly demolition or disassembly!

Save time & money!

This instrument will pay for itself over and over again in reduced labor costs. The amount of time you will save troubleshooting and problem-solving will make you more productive and profitable than ever before.

High Performance... real value!

It offers the same high-performance and results as tools costing 10 times as much. The high resolution lens provides a clear image of objects as close as 3/4 inch and over one foot away while providing a wide 40 degree field of view. A powerful lamp illuminates dark crevices on-demand with the push of a button conveniently located on the handle. The ergonomically designed handle is comfortable to hold and allows one-handed focusing and light activation.

Rugged and water resistant, it is made of high impact ABS and flexible cable sheathing that obediently stays in a set position. Adjust the cable into any position and it will stay fixed in place, until you decide to change it. This feature permits one-handed operation - freeing your other hand to work!

TECHNICAL SPECIFICATIONS

	Cable		Handle		Overall		Carrying Case
	Length	Diameter	Length	Width	Length	Weight	Weight
Borescope	36" 914mm	.4" 10.16mm	6" 152.4mm	1.43" 36.2mm	41.8" 10.16mm	11.2oz 318g	2lb. 4oz. 1021g

	Field of View	Optimal Viewing Distance		Lamp Volts	Power Source	Pressure Necessary to Operate Lamp
		Min.	Max.			
Borescope	40°	.08" 2mm	Dependent upon ambient lighting conditions	2.7v Halogen	2 AA Batteries (not included)	2.9 avg. p/psi 3.2 max. p/psi

PART #	PRODUCT DESCRIPTION	LIST PRICE	ems PRICE
BORESCOPIES, KITS AND ACCESSORIES			
120905	PV300-ProKit (Includes color borescope, 45 degree Mirror Attachment, Magnet, extra halogen bulb & case)	\$295.00	\$249.00
120906	Borescope 45 degree mirror Attachment	\$17.95	\$17.95
120907	PL-1000 Halogen Bulb For Borescopes	\$9.95	\$9.95
120915	Visual Optics Borescope	\$295.00	\$249.00
120913	Flex Eye IS5000 video inspection system	\$1549.00	\$1449.00

Visual Optics

BORESCOPE

Now it's easy to inspect inaccessible areas!



120915

This borescope is ideal for searching behind walls, ductwork, into pipes, or any other inaccessible area. The 36" flexible cable adjusts to almost any position and allows easy one hand operation. This borescope also features a high resolution lens and a solid state LED lamp for bright illumination.

36" Flexible Cable	LED lamp
10 mm Tip Diameter	Easy to Use handle
3" Minimum Bending Diameter	Die-cut foam carry case (included)
40 Degree Viewing Angle	Powered by 4 AA batteries (included)

FLEX EYE IS5000

Video Inspection System



120913

The high-tech IS5000 video inspection system is designed to provide mold remediation and facility restoration contractors, consultants, facility engineering and maintenance departments, insurance companies and building inspectors with a reliable and minimally invasive method for finding hidden damage or contamination. Compact, lightweight and easy-to-use, the IS5000 is ideally suited for locating, identifying and documenting problems such as water or moisture damage or mold growth in wall cavities and other spaces that are hard to see or reach.

Particle Counters



Ergonomically designed and lightweight, the Lighthouse HANDHELD 3016 is the newest and most advanced Handheld particle counter on the market for Indoor Air quality monitoring. Offering 6 channels of simultaneous particle counting, the HANDHELD 3016 displays both cumulative and differential particle count data as well as Temperature/Relative Humidity data on its easy-to-read 3.8" (9.25 cm) backlit touch screen. A removable Lithium Ion battery maximizes the HANDHELD 3016's up-time. Data is easily downloaded using the Lighthouse Data Transfer Software LMS XChange. The HANDHELD 3016 will monitor particulate levels accurately and reliably, even in those "hard-to-reach" areas where two handed operation is unsafe. Designed and built by Lighthouse Worldwide Solutions, a name you can trust.



Full Product Line Available

PART #	PRODUCT DESCRIPTION	LIST PRICE	ems PRICE
PARTICLE COUNTERS			
120247	Lighthouse Pelican Carrying Case	\$129.00	\$99.00
120500	Lighthouse 3016 Particle Counter (detects micron sizes .3u .5u .7u 1.0u 2.0u & 5.0u)	\$3,595.00	\$3,395.00
120501	Lighthouse 3016 IAQ Particle Counter (detects micron sizes .3u .5u, 1.0u, 2.5u, 5.0u & 10.00u)	\$3,595.00	\$3,395.00

Features:

- Removable / Rechargeable Lithium Ion Battery
- View 6 Particle Sizes Simultaneously
- Meets JIS Standards
- 3.8" (9.25 cm) Backlit Touch Screen Interface
- Large Memory: Stores 3000 Sample Records
- Buffered Data Immediately Viewable
- Internal Audible Alarm
- Ergonomically Designed Handle
- Lightweight: only 2.2.lbs
- Temperature/Relative Humidity Probe Included
- Data Easily Downloaded to Computer
- Designed for Reliability

Applications:

- Baseline Studies
- Mold Remediation
- Assists in Mold Location
- Verify Containment Areas during Mold Remediation
- Detect and Verify Particle Sources
- Filter Testing
- Validation of HVAC Duct Cleanliness
- Pre-test Prior to CIH certification
- Indoor Air Quality Investigations
- Laminar Air Flow and Biohazard Benches
- Hospital Surgical Rooms
- Paint Spray Booths
- Monitor Manufacturing Areas

Screen Detail



120247

Particle Counters

Fluke 983 particle counter

Specifications	
Channels	0.3, 0.5, 1.0, 2.0, 5.0, 10.0 µm
Flow Rate	0.1 cfm (2.83 L/min) controlled by internal pump
Count Modes	Concentration, totalize, audio
Counting Efficiency	50% @0.3 µm; 100% for particles > 0.45 µm (per JIS B9921:1997)
Zero Count	1 count/5 minute (JIS B9921:1997)
Coincidence Loss	5% at 2,000,000 particles per ft ³
Relative Humidity	± 7%, 20% to 90% non-condensing
Temperature	± 3 °C, 10 °C to 40 °C (50 °F to 104 °F)
Data Storage	5000 sample records (rotating buffer) of date, time, counts, relative humidity, temperature, sample volumes, alarms, label
Alarms	Counts, low battery, sensor fail
Delay Time	0 to 24 hours
Sample Inlet	Isokinetic probe
Interface	RS-232 and RS-485 via RJ-45
Environmental Specifications	
Operating:	10 °C to 40 °C (50 °F to 104 °F), 20% to 90% relative humidity, non-condensing
Storage:	-10 °C to 50 °C (14 °F to 122 °F), up to 90% relative humidity, non-condensing
Mechanical & General Specifications	
Size	11.43 cm x 20.96 cm x 5.72 cm (4.5 in x 8.25 in x 2.25 in) Dimensions (W x L x D)
Weight	1.0 kg (2.2 lbs)
Power	AC adapter, 12 V DC at 2.5A, 90 to 250 V AC, 50 to 60 Hz
Rechargeable Battery	NiMH, 4.8 V at 4.5 Ah; replaceable
Battery Life	8 hours
Recharge Time	2 hours
Calibration	PSL particles in air (NIST traceable)



120240

Quickly and accurately measure particle concentrations in the air. Particle data is important in mold remediation, particle source identification, and filter testing. The Fluke 983 is invaluable for plant maintenance and utility technicians, HVAC-service contractors, and specialists who assess indoor air quality (IAQ). Lightweight and accurate in any position, the Fluke 983 has a six-channel particle size display and extensive data-logging capacity, making it the perfect tool for monitoring problem areas.

The Fluke 983 has:

- Highly visible backlit LCD with six particle size (0.3, 0.5, 1.0, 2.0, 5.0, 10.0 µm) display
- 5000 sample record capacity
- Selectable sample time, count data, programmable delay
- Concentration, totalize, and audio counting modes
- Built-in RH and Temp
- Rechargeable NiMH battery providing up to 8 hours continuous operation
- Low battery alarm

Included Accessories

Certificate of Calibration (NIST), Windows compatible software download utility, DB9 to RS-232 adapter and cable, isokinetic probe, high-purity tubing, 1/8 in. hose barb adapter, power supply, zero count filter, operation manual, and molded plastic case.

Full Line **FLUKE** Distributor

PART #	PRODUCT DESCRIPTION	LIST PRICE	ems PRICE
PARTICLE COUNTER			
120240	Fluke 983 Particle Counter	\$4,495.00	\$4,475.00

Gas Monitors/Gas Detection Tubes & Kits

Fluke 975 AirMeter™



The Fluke 975 AirMeter test tool raises indoor air monitoring to the next level by combining five powerful tools in one, rugged and easy-to-use handheld device. Use the Fluke 975 to optimize HVAC ventilation settings for ASHRAE 62 recommendations, actively monitor conditions that promote a productive environment, and quickly and accurately address occupant comfort complaints the first time. The Fluke 975 measures:

- Temperature
- Velocity (optional)*
- Humidity
- CO₂
- CO

VELOCITY PROBE:

Included with Fluke 975V, optional with Fluke 975
Fluke 975V AirMeter™ with Velocity Probe available at an additional cost.

120278

Use the fluke 975 airmeter test tool to:

- Respond to comfort-related calls from occupants.
- Verify the operation of building HVAC control systems.
- Determine whether adequate ventilation exists.
- Monitor air flow and velocity.
- Test for dangerous carbon monoxide leaks.
- Perform duct traversals.
- Optimize HVAC systems to manage energy costs.

FEATURES:

- Simultaneously measures, logs, and displays temperature, humidity, CO₂, and CO on a bright, backlit LCD display
- One-touch air flow and velocity with available probe* (product # 120278-V)
- Wet bulb and dew point temperature
- % of outside air calculation
- CO₂ and CO field calibration feature
- Self-test function at startup
- Auto-backlight
- Automatically compensates for barometric pressure changes
- Min/Max/Average on all measured and calculated readings
- Multi-language user interface
- Metric or standard units
- Audible and visual threshold alarms
- Extensive discrete or continuous data logging capacity, downloadable to PC via USB interface
- Keypad lock for security
- Included FlukeView Forms® software

TSI® IAQ CALC



120220

- Temperature and relative humidity measurements help determine thermal comfort levels
- Calculates % outside air from either CO₂ or temperature readings
- Directly calculates dew point, wet bulb temperature, absolute humidity & humidity ratio - no psychrometric chart needed
- Electrochemical sensor measures CO at outdoor air intakes, HVAC systems and parking garages (Model 8762 only)
- Two-line display shows multiple parameters simultaneously
- Data logging allows user to log 14,000 samples with a time and date stamp
- Simultaneously records all parameters available
- Continuous data logging enables full-cycle monitoring and trend analysis
- TSI LOGDAT™ downloading software permits easy transfer of data to a computer
- LOGDAT Companion Excel® Macro automatically graphs your data
- Data can be reviewed on-screen, printed or downloaded to a computer for easy report generation
- Statistics function displays average, maximum and minimum values, and the number of recorded samples

PART #	PRODUCT DESCRIPTION	LIST PRICE	ems PRICE
GAS MONITORS			
120220	TSI 8760 IAQ-Calc IAQ Meter (Temp/RH/DP/CO ₂)	\$1,795.00	\$1,795.00
120221	TSI 8762 IAQ-Calc IAQ Meter (Temp/RH/DP/CO ₂ /CO)	\$1,995.00	\$1,975.00
120278	Fluke 975 AirMeter (W/out Velocity Probe)	\$2,195.00	\$2,075.00
120278-V	Fluke 975 AirMeter (With Velocity Probe)	\$2,495.00	\$2,375.00
120278-CAL	Calibration Kit for Fluke 975 AirMeter	\$550.00	\$550.00

Gas Monitors/Gas Detection Tubes & Kits

FlukeCO-220
Carbon Monoxide Meter



Quickly and accurately measure CO levels with easy-to-use compact meter

The Fluke CO 220 Carbon Monoxide Meter makes it easy to take quick and accurate measurements of CO levels with a single compact instrument. Featuring the newest generation of electrochemical sensors, the CO 220 responds very quickly to ambient changes in carbon monoxide concentration without the use of a pump. The CO 220 is the perfect instrument for technicians and other professionals who need to measure CO levels within spaces such as industrial environments, commercial buildings, or residential dwellings where accumulation of combustion gases is possible.

CO 220 product highlights include:

- Rugged case and electronics.
- Large LCD displays CO levels from 0 to 1000 ppm.
- Bright back light allows easy screen viewing under dim lighting conditions.
- Beeper triggers with increasing frequency as CO levels increase.
- MAX Hold function stores and displays the maximum CO level.
- Automatic sensor zeroing and self test sequence upon start up.
- CO level beeper can be silenced if desired.
- Automatic power off after 20 minutes extends battery life.
- Easy to replace battery.
- Replaceable sensor extends tool life.
- C50 soft carrying case, battery and instruction sheet.

Measurement specifications

- Range: 0 to 1000 ppm
Resolution: 1 ppm
Accuracy: 3%
- Stabilized electrochemical CO specific sensor with 2 second warm up.
 - Typical three year life; one year calibration cycle.
 - Battery life typical 500 hours with alkaline battery.



120276

TSI
IAQ CALC 8732



120223

Carbon Dioxide (CO₂) Meter

TSI's IAQ-Calc™ Meters are exceptional IAQ instruments for investigating and monitoring building air quality. The Model 8732 is a cost-effective carbon dioxide monitor.

Standard Features:

- Carbon dioxide monitor with low-drift NDIR CO₂ sensor to ensure stable, accurate readings
- Sampling function records multiple point measurements
- Optional portable printer provides hard copy documentation

PART #	PRODUCT DESCRIPTION	LIST PRICE	ems PRICE
GAS MONITORS			
120223	TSI IAQ-CALC Carbon Dioxide Monitor	\$495.00	\$475.00
120276	Fluke CO-220 Carbon Monoxide Meter	\$299.95	\$299.95

Gas Monitors/Gas Detection Tubes & Kits

QRae II

Compact Multi-gas Detector for H₂S, CO, O₂ Combustibles



120258



The QRAE II is a full-featured, compact, one- to four-sensor gas detector for detection of combustibles, oxygen, hydrogen sulfide, and carbon monoxide. Key features include easy-to-change, externally accessed battery packs (available in rechargeable and alkaline versions), a water-resistant case and a new state-of-the-art O₂ sensor technology with extended life.

Key Features include:

- Patented SPE O₂™ Oxygen sensor
- Best EMI/RFI immunity technology for products in its class, eliminating radio interference
- Easy access to sensors, filter and battery compartment without exposing electronic components to potential damage
- Big graphic display for easy overview of gas type and concentration
- Alkaline adapter and Lithium-ion battery pack
- Rugged housing withstands harsh environments

QRae Plus

Compact Multi-gas Detector for H₂S, CO, O₂ Combustibles



120259

The QRAE Plus is a full-featured, compact, one-to-four sensor confined space gas detector. It's features include easy-to-change, externally accessed battery packs (available in both alkaline and rechargeable versions) and water-resistant case design. The rechargeable, Lithium-ion battery pack provides up to 20 hours of continuous operation. The QRAE Plus includes 16,000 datalogging points of storage capacity for download to PC compatible with Windows 98, NT, 2000 and XP.

Key Features include:

- One-to-four plug-in "smart" sensors: Combustible, Oxygen, Hydrogen Sulfide, Carbon Monoxide
- Optional substance-specific toxic sensors: Sulfur Dioxide (SO₂), Nitric Oxide (NO), Nitrogen Dioxide (NO₂), Chlorine (Cl₂), Hydrogen Cyanide (HCN), Ammonia (NH₃), Phosphine (PH₃)
- Rechargeable Lithium-ion battery pack provides up to 20 hours (more than 2 work shifts) of continuous operation
- Rugged housing withstands use in harsh environments with a water and dust resistant case and strong protective rubber boot
- Highly resistant to radio frequency and other electromagnetic interference
- Strong, built-in sample draw pump with optional collapsible sample-probe
- Also available in diffusion configuration
- One-button calibration with auto-zero capability
- Loud audible alarm
- Bright Visual Alarm
- Interchangeable Lithium-ion and alkaline battery packs

QRae

4 Gas Monitor With Confined Space Entry Kit



120257

QRAE is a rugged, easy to use, economical, hand-held 4 gas monitor. It has a built-in robust internal pump with optional 20,000 point datalogging capacity.

Features

- Reliable plug-in smart sensors
- Combustible
 - Oxygen
 - Hydrogen Sulfide
 - Carbon Monoxide

Applications

- Confined Space Entry
- waste water treatment plants
 - marine and off shore oil wells
 - landfill operations
 - trenches, silos, railcars
 - coal mines
 - cruise ships
 - sewers and manholes
 - tunnels
 - Refineries, petrochemicals plants, offshore drilling and plant shut downs
 - Power plants
 - Pulp and paper industry
 - Steel mills

PART #	PRODUCT DESCRIPTION	LIST PRICE	ems PRICE
GAS MONITORS			
120257	QRAE 4 Gas Monitor for Confined Space Entry Kit (kit includes: monitor, case, sampling wand, tool kit, four-gas mix in a 34L cylinder, calibration regulator and tubing)	\$875.00	\$875.00
120258	QRAE II, LEL/O ₂ /H ₂ S/CO with alkaline batteries (lithium ion rechargeable batteries also available)	\$545.00	\$545.00
120259	QRAE PLUS, LEL/O ₂ /H ₂ S/CO, Li-ion battery with charger, software	\$1,105.00	\$1,105.00

Gas Monitors/Gas Detection Tubes & Kits

Standard Features:

- Continuous monitoring of VOCs 0-1000 ppm with 0.01 ppm (10 ppb) resolution with PID sensor
- Continuous monitoring CO2 0-20,000 ppm with 10 ppm resolution
- Continuous measurement of Temperature and Relative Humidity
- Toxic sensor socket accepts CO, H2S, SO2, NO, NO2, Cl2, HCN, NH3 and PH3 sensors
- Built in diaphragm pump for sampling
- 24 hours continuous operation from built-in Li-Ion battery
- 24/7 continuous operation when plugged into wall charger
- Interchangeable Li-Ion or alkaline battery pack
- Data easily downloaded with ProRAE Suite software

- Sensors as specified
- Carbon filters (for units with CO)
- Calibration adapter
- Rechargeable Lithium ion battery pack
- 110/240 V AC/DC Wall Adapter
- Spare alkaline battery pack
- Filter adapter
- 10 spare external filters, 5 spare internal filters
- Hard transport case with pre-cut foam
- Sampling Wand w/ 10' of self-coiling Teflon tubing
- Tool Kit

IAQRAE

120255



The IAQRAE is the only indoor Air Quality (IAQ) monitor to combine a Photo-Ionization Detector (PID) with traditional measures of IAQ like Temperature, Humidity, Carbon Dioxide (CO2) and a user-selected toxic gas sensor in one 1-5 sensor package. The PID gives the IAQRAE the ability to measure 0-1000 ppm of VOCs (Volatile Organic Compounds) with 0.01 ppm (10 ppb) resolution.

ToxiRAE

The ToxiRAE Plus PID is the world's first and only pocket-sized datalogging Photoionization Detector (PID). Its small size brings the "broad-band" capabilities of the PID/VOC detector to a personal level for 10 hours of continuous and instantaneous monitoring of volatile organic compounds (VOCs). The ToxiRAE PID is a very convenient tool that alarms to warn of excessive exposure. Applications include VOC threshold detection in HazMat, environmental cleanup, or industrial applications.



120260

Key Features:

- Small and light enough to wear in a pocket for a full working shift of protection
- The ToxiRAE Plus PID lamp and sensor comes apart in seconds for easy maintenance without tools!
- Measure more chemicals than with any other PID. With over 38 standard Correction Factors available and the largest printed list of Correction Factors in the world (300+),
- The standard rugged rubber boot helps assure that the ToxiRAE Plus survives the bumps and knocks of tough field use.
- Large keys are operable even with 3 layers of gloves
- Store up to 67 hours of data at one minute intervals for download to PC with the optional datalogging.
- Varying audio alarm signals for different alarm conditions including STEL, TWA, and Peak

MiniRAE 2000

voc monitor

The rugged MiniRAE 2000 is the most popular hand-held photoionization detector (PID) for VOC measurement ranging from 0-10,000 parts-per-million. The MiniRAE 2000 is used to monitor air pollution, leaking underground storage tanks, confined space entry, emergency response to hazardous spills, indoor air quality and as a survey instrument.

***Basic unit includes data logging.**

120263



ppbRAE plus

voc monitor

The ppbRAE Plus extends the range from 1 part-per-billion to now 2,000 parts-per-million. The ppbRAE Plus is the most sensitive handheld VOC monitor with true parts-per-billion (ppb) detection of low level, low vapor pressure, highly toxic VOCs, pesticide residues, and low level permeation breakthrough detection. The ppbRAE Plus also comes with an option to be wirelessly enabled and compatible with the AreaRAE family, providing real-time data transmissions to a host controller located up to 2 miles away.

120261



PART #	PRODUCT DESCRIPTION	LIST PRICE	ems PRICE
GAS MONITORS			
120260	TOXIRAE PLUS PID with Ni-Cd battery, 120V universal charger	\$1450.00	\$1450.00
120261	ppbRAE Plus	\$6245.00	\$6245.00
120263	MiniRAE 2000	\$3545.00	\$3545.00
120255	IAQRAE Air Quality Monitor	\$3,745.00	\$3,745.00

Gas Monitors/Gas Detection Tubes & Kits

Draeger CMS: Measurement Made Easy



120215

CMS: Chip Measurement System

The CMS combines substance specific measuring Chips with an electronic based Analyzer for an easy-to-use spot-measurement system. The 10 capillaries in each Chip are filled with a reagent system based on Draeger's 60+ years of calorimetric chemistry expertise. The analyzer combines a revolutionary optical system for analyzing the color reaction with a mass flow controller and pump system that provides unbeatable reproducibility.

Simplified Operation: The CMS is literally as easy to operate as 1-2-3. Making an analysis is as simple as turning the unit "on" (moving the slide to position 1), then following the plain language instructions on the display to load the Chip and move the slide selector to positions 2 and 3. Operating the CMS couldn't be easier because this is the exact same procedure for every Chip! Upon completion of the analysis, the CMS Analyzer shows the concentration on the display. Any misinterpretation of the results is eliminated by the unambiguous digital display of the concentration.

Choose from 55 different chips.
Call for available chips.

IAQ Kit Includes: Analyzer Set, 4 Chips and Nylon Transport Case (includes the following chips: Carbon Dioxide 200-3000 ppm, Carbon Monoxide 5.0-150 ppm, Formaldehyde 0.20-5.0 ppm and Ozone 25.0-1000 ppb)

MiniWarn: Fits your Application

You Design The Miniwarn....
choose From 20 Different Sensors! Tests for 1-4 gases at a time

*call for available sensors

Easy Operation: The MiniWarn is one tough little instrument, but it's very easy to operate. The three buttons on the front of the monitor turn it ON, OFF, acknowledges alarms and access routinely needed data like battery levels. Functions such as calibration and alarm set points are adjusted through plain language menu commands. These functions are protected by a pass code to prevent accidental or unauthorized adjustment. In the adjustment modes, the three-buttons act as up, down, and enter buttons to navigate you through the menu. Operation of the MiniWarn is very intuitive.

Ultimate Flexibility: You design the MiniWarn, specifically for your application. Choose from over 20 different intelligent sensors for the four measurement channels, and change sensors quickly as your needs change. The three battery pack options: NiCd, NiMH, and Alkaline, are interchangeable allowing for quick change-outs when 24-hour operation is needed.

120217



PART #	PRODUCT DESCRIPTION	LIST PRICE	ems PRICE
GAS MONITORS			
120215	Draeger CMS IAQ Kit	\$2209.00	\$2089.00
120217	Draeger MiniWarn Kit	\$2789.00	\$2635.00
BELLOWS PUMP			
600170	Draeger ACCURO Bellows Pump with Tube Breaker	\$379.00	\$379.00
Tubes not included. Call for a complete list.			

Draeger ACCURO: Bellows Pump & Tubes

More than 500 substances can be detected and measured using the Dräger-Tube system. Typical applications include the monitoring of workplace air, emission measurements, quality control, process control and monitoring of compressed air for breathing apparatus, as well as environmental and hazardous substance detection technology.



600170
Tubes Not Included.

MORE THAN 500 SUBSTANCES CAN BE DETECTED!
Call for a complete list of available tubes

The accuro gas detector pump is a manually operated bellows pump that draws a calibrated 100 milliliter sample through the short-term Dräger-Tubes.

Features:

- One-Hand Operation
- Very Low Maintenance
- End-of-Stroke Indicator
- Built-in automatic Stroke Counter

Gas Monitors/Gas Detection Tubes & Kits

Sensidyne



PART #	PRODUCT DESCRIPTION	LIST PRICE	ems PRICE
SENSIDYNE GAS DETECTION TUBES & KITS			
600191	Sensidyne/Kitagawa Detector Tube Pump Kit	\$349.00	\$340.00
126F	Carbon Dioxide (100-4000ppm)	call for pricing	
106SC	Carbon Monoxide (1-50ppm)	call for pricing	
171SB	Formaldehyde (1-35ppm)	call for pricing	
120SD	Hydrogen Sulfide (1-60ppm)	call for pricing	
117SC	Nitrogen Dioxide (0.1-10ppm)	call for pricing	
125SA	Propane (0.02-0.05%)	call for pricing	
103SD	Sulfur Dioxide (1-60ppm)	call for pricing	

over 300 Gas & Vapor Tubes to Choose From!

Complete Line of Sensidyne, Gastec & Draeger Detector Tubes Available!

call for a complete list 800.293.3003

or visit us at www.emssales.net



600180

Gastec

Gas Detection Tubes

Gastec detector tubes are thin glass tubes with calibration scales printed on them which allow you to directly read concentrations of the substances to be measured. These tubes are a great economical way to quickly screen for indoor contaminants.



PART #	PRODUCT DESCRIPTION	LIST PRICE	ems PRICE
GASTEC DETECTION TUBES & KITS			
600180	Gastec Detector Tube Pump Kit	\$335.00	\$335.00

Gas or Vapor	Range	Tube#
Carbon Dioxide - (XLR)	300-5000ppm	2LL
Carbon Dioxide - (XLR)	100-4000ppm	2LC
Carbon Monoxide - (XLR)	5-50ppm	1LL
Formaldehyde - (XLR)	0.05-1ppm	91LL
Acetic Acid - (LR)	0.125-25ppm	81L
Ozone - (LR)	0.125-3ppm	18L
Nitrogen Oxide - (LR)	0.04-10.5ppm	11L
Hydrocarbons	100-3000ppm	105

LR = Low Range XLR = Extra Low Range
Tubes are available for over 300 substances
A complete list is available at www.emssales.net

Accustar Radon Test Kit

Double vial test kit. New and Improved!

A Lightweight and easy to use 2 to 4 day test kit preferred by many professionals. Includes two (2) charcoal liquid scintillation (LS) vials, instructions, postage-paid return mailer, laboratory analysis and report via US Postal Service or fax. Kits receive priority laboratory processing.



120902

PART #	PRODUCT DESCRIPTION	LIST PRICE	ems PRICE
RADON TEST KIT			
120902	Accustar Radon Double Vial Test Kit	\$29.95	\$24.95

Moisture Meters

PROTIMETER World Leaders in Moisture Measurement and Dampness Diagnosis

Protimeter MMS Plus

3 In 1 Moisture Meter & Hygrometer Now Featuring 0-100% Humistick Sensor

The moisture you cannot see matters most when cleaning and restoring a property after water damage from storms, floods or fires. From hidden mold to unseen structural damage, undetected moisture damages health and property and its oversight can create liability. That's why the right moisture meter makes the difference.

The MMS Plus is a complete moisture measurement system in one easy-to-use robust instrument.

- Hygrometer mode measures relative humidity, ambient temperature, dew point and grains per pound with a replaceable Humistick™ probe
- Pin measure mode determines moisture content of wood and Wood Moisture Equivalent (WME) in other building materials
- Pinless measure mode uses radio frequency to detect moisture non-invasively
- Diagnose the extent of moisture intrusion for damage assessment and monitor drying out of building structures
- Use deep wall pin-type probes to measure moisture in walls, wall cavity insulation, sub and surface structures

Search behind ceramic tile, fine finishes, water stains, tile and vinyl floor coverings, wood, drywall, plaster, masonry, concrete and concrete block.

- Non-invasive pinless radio frequency finds moisture up to 3/4 in (19 mm) below surface
- Search mode not adversely affected by surface moisture

Hygrometry checks the dehumidification process and monitors buildings for adequate ventilation affecting indoor air quality.

- Measures moisture in concrete floors using ASTM F2170-02
- Measures relative humidity and temperature, dew point and surface temperature, surface proximity to dew point (condensation) and grains per pound
- Use to detect conditions for mold and fungus growth, that can lead to unhealthy living conditions

MMS kit with Humistick/Software Package includes:

- Data download software with cable (BLD5810)
- Humistick (POL7750) Range 0-100%, fast responding
- Surface temperature sensor (BLD5804)
- 5" (127 mm) insulated deep wall probes (BLD5018)
- Pin moisture probe and hygrostick lead (BLD5060)
- Calibration check device (BLD5086)
- Hygrostick/Humistick ext. lead, 30" long (76 cm) (BLD5802)
- Instructions and nylon zipper pouch
- Wood species calibration table
- One year parts and labor warranty



120307



120305

Protimeter Mini-Moisture Meter

The Definitive Moisture Meter

The most widely used moisture meters in the world are probably the Protimeter Mini series. These compact, general purpose moisture meters are used by building professionals and trades across the globe to check the moisture level of wood and masonry products for a vast range of quality control and dampness diagnosis applications.

Protimeter has now launched a new version of the famous Mini moisture meter. The new Mini incorporates a range in design refinements and features that make it much simpler to use than the instrument it supersedes. The stylish instrument case fits snugly in the hand, so it can be used effortlessly for long periods and the new display is very bright for visual clarity.

Also, if the instrument is inadvertently left on, it switches off automatically after five minutes to save the battery life.

Protimeter has used their knowledge and expertise to produce an instrument that combines sympatric design with optimized functionality.

Specifications:

- Calibration chart for over 150 wood species
- Power 2 x AA
- Pin Measurement Range 6-100
- Read out - 60 bright LED's
- Pouch
- Calibration Check

Moisture Meters

PROTIMETER

A New Generation of Moisture Meters

Protimeter has been manufacturing moisture meters for a wide range of industries for over 40 years.

Protimeter has built its reputation by providing the latest technology together with high quality manufacturing and excellent service.

120302



Protimeter Surveymaster

- Identify the extent of the dampness
- Diagnose the cause of the problem
- Monitor change in the moisture level
- Assess, in relative terms, if the material is in a dry, borderline or damp condition
- Map the extent of the problem numerically
- Monitor change in moisture condition numerically
- Features Beeper. May be switched on/off by the user.
- Auto switch off. May be switched off, or set between 1-3 minutes, by the user.

SM BLD5350

The Protimeter Surveymaster SM moisture meter combines the conventional two-pin inspection method, with a non-invasive radio frequency technique. This enables the user to assess the moisture condition not only on the surface, but also at depth quickly and non-destructively.

The Search Mode uses the same colour coded LED scale as the Measure mode, identifying degrees of dampness below the surface. There is also a user adjustable Audible Alarm that sounds to indicate the varying levels in moisture. In this mode, the instrument employs radio frequency emissions (RFE) to measure moisture through most wall and floor coverings, including ceramic tiles.

The two-pin Measure Mode identifies by means of green, yellow and red LEDs whether a surface is in a safe i.e. air-dry, borderline or damp condition. The dampness measure is quantified on an LCD display to one decimal place in terms of % wood-moisture-equivalent (%WME).

PART #	PRODUCT DESCRIPTION	LIST PRICE	ems PRICE
MOISTURE METERS			
120302	Protimeter SurveyMaster Penetrating/Non-Penetrating Moisture Meter	\$539.00	\$459.00
120305	Protimeter Mini-Moisture Meter (LED Display)	\$220.00	\$199.00
120307	Protimeter MMS Plus Temp/ Relative Humidity/ Moisture w/ Grains/lb calculation & data download kit	\$1,199.00	\$1,099.00
120308	Protimeter MMS Data Cable and Software	\$99.95	\$99.95
120315	Replacement Hygrosticks (singles)	\$60.00	\$60.00

Moisture Meters

Introducing the New

Delmhorst TotalCheck

The Delmhorst's TotalCheck three-in-one meter offers scan and pin moisture modes and a thermo-hygrometer that measures ambient Temperature and RH and calculates Dew point and GPP. The RH sensor of TotalCheck is removable and conforms to the ASTM F-2170 standard.



Basic Package:
Includes meter
(1) RHT-S1 humidity sensor
carrying case
26-ES electrode
(10) #496 pins.

Pin mode:

- 5%-60% wood scale
- Corrects for 69 individual wood over the range of 5%-60% MC
- Corrects for temperature over the range of 0-255°F/-18-124°C
- 0.1% - 6% sheetrock scale
- 0-100 numerical reference scale for non-wood building materials

Scan mode:

- 0-200 numerical reference scale

Thermo-hygrometer with RH sensor - conforms to ASTM F-2170

- Measures Temperature over the range of -4-158°F/-20-70°C
- Measures RH over the range of 0-100%
- Calculates Dew Point
- Calculates Specific Humidity (GPP)

General Features:

- Connector for external Electrodes
- On-screen reading recall of up to 1400 stored readings
- Date and time stamp for each stored reading
- Job groupings
- Infrared linking to PC or laptop
- Application software - generate reports and manage data
- 9V battery
- 1-year warranty
- Carrying Case

Delmhorst MoistureCheck



The MoistureCheck has integrated pin and pin-less technologies to develop two state-of-the-art meters designed for restoration contractors, home, and building inspectors and IAQ specialists.

PC/KIT Application Software Program:

Enables you to download stored readings from the meter to a PC via infrared linking. This software will enable you to:

- Export job data to Excel
- Customize printing options
- View readings and stats in the application program
- Save and print individual or group job readings
- Customize job title
- View data in Fahrenheit or Celsius
- Append notes to each job
- Generate graphical histogram

All these features are provided in a easy to use, GUI interface, and are compatible on Windows 95/98/ME/2000/XP, The PC/KIT is included in the M:Check/CP (complete package), or may be ordered separately.

Full Line Delmhorst Distributor

PART #	PRODUCT DESCRIPTION	LIST PRICE	ems PRICE
MOISTURE METERS			
120328	Delmhorst MoistureCheck Complete Package (M:Check/CP) Includes meter, 26-ES electrode, 21-E e, extra contact pins for the meter, PC/KIT software application program, and carrying case.	\$725.00	\$639.00
120329	Delmhorst MoistureCheck (Instrument Only)	\$525.00	\$449.00
120324	Delmhorst TotalCheck (Basic Package: Includes meter, (1) RHT-S1 humidity sensor, carrying case, 26-ES electrode, and (10) #496 pins.)	\$825.00	\$779.00

Moisture Meters



120325

Delmhorst Accuscan

Pinless Moisture Meter w/ Case

- Quickly scan the area upon arrival to determine moisture levels in damaged and non-damaged areas.
- Reduce drying time by checking moisture every step of the way.
- Record readings during the drying cycle to monitor progress of drying equipment.
- Verify the structure is dry before removing drying equipment.

Features:

- Easy to read analog readout
- Measures %MC in wood over the range of 6%-40%
- 0-100 reference scale for non-wood building materials
- 3/4" penetration
- Durable electrode pads – more rugged than competitors' sensor pads
- Built-in battery and calibration checks
- 1 year warranty
- Carrying Case included



120327

Delmhorst BD-2100

Moisture Meter w/ Case

- Digital readout
- Three scales:
- Wood Scale - 6% to 40% moisture range. Use for flooring and building material such as wood studs, floor joists, subfloors
- Reference Scale reads from 0 to 100 on a relative basis. Use on non-wood materials such as concrete, plaster, and insulation
- Gypsum Scale - 0.2%-50% moisture range. Use on sheetrock.
- Averages up to 100 accumulated readings
- Set-point alerts you to when a pre-selected MC is reached
- Connector to attach #21-E or #26-ES electrode for deep penetration
- One year warranty
- Truly one of the most versatile moisture meters available today, the BD-2100 is perfect for the professional contractor.

Additional special order
attachment probes available.
Call for details.

PART #	PRODUCT DESCRIPTION	LIST PRICE	ems PRICE
MOISTURE METERS			
120325	Delmhorst Accuscan Pinless Moisture Meter With Case	\$295.00	\$259.00
120327	Delmhorst BD-2100 Moisture Meter With Case	\$310.00	\$269.00

Moisture Meters



120320

TRAMEX SURVEY ENCOUNTER

THE WORLD'S MOST ADVANCED METER FOR MEASURING MOISTURE IN WOOD, DRY-WALL, PLASTER, BRICK, ROOFING, SIDING AND OTHER CONSTRUCTION MATERIALS

The [Survey Encounter](#) gives you:

- Non-destructive readings
- Stores up to 625 readings in 25 files
- Accurate moisture readings from 5 to 30% in wood
- Relative readings in walls, roofing and many other construction materials.
- Automatic correction for density and temperature
- Library of 32 wood species plus 3 wall and 3 roofing types
- Dot Matrix LCD display
- Readings can be recalled and displayed on LCD

The [Survey Encounter](#) comes complete with customized software and PC interface so you can:

- Download recorded readings to your PC.
- Transfer stored data to your word-processing or spreadsheet program for analysis or incorporation in your report writing.
- Edit any of the 32 wood species in the instrument library from 300 species in the software.

Concrete Encounter CME4

For measuring moisture content...instantly...in concrete floors and floor screeds without the need to drill or damage the surface.

- Regular checking of moisture content during the drying out period of a new concrete floor or floor screed is important to ensure it has reached sufficient dryness to accept the floor covering.
- Excess moisture in the concrete could cause latent problems such as condensation or failure of the adhesive under the floor covering.
- The Concrete Encounter will give you an instant reading of moisture content up to 6% concrete; up to 0 - 10 comparative on gypsum screed enabling you to make an informed decision on when to install the floor covering.
- To use, simply switch on and hold the instrument firmly against the surface. As many non-destructive tests as you need can be carried out in seconds without the need to drill or damage the concrete.

Specifications

Size: 6in X 3in X 1.5in

Weight: 10.5 oz

Power: 9 volt PP3 battery

Display: Analogue

Measuring Range:

To over 6% moisture content for concrete

0 to 10 comparative for Gypsum floor screed

0 to 100 reference scale



120323

PART #	PRODUCT DESCRIPTION	LIST PRICE	ems PRICE
MOISTURE METERS			
120320	Tramex Survey Encounter Moisture Meter	\$685.00	\$685.00
120323	Tramex Concrete Encounter CME4	\$459.00	\$459.00

Temperature / Relative Humidity Meters

TelAire



CO₂, Temperature, RH & Datalogger



120310

The Telaire 7001D hand held monitor features a patented absorption infrared technology.

Accurately measures CO₂ and temperature while calculating real-time ventilation rates. The Telaire 7001D also offers data logging and RH data gathering capabilities. Product kits include a power adapter, however, the unit may be operated up to 80 hours on 4 AA batteries (not included).

**WARRANTY: 18 MONTHS
PARTS & LABOR**

Functions and Features:

Large, easy to read display. Temperature displayed in °F or °C. CO₂ displayed in ppm. Easily adjusted for altitude changes
Flip out stand for desktop monitoring
Plug In AC power adaptor
Operates for up to 80 hours on 4 AA alkaline batteries (not included).
Calibration Kit Available

Applications

Identify areas with low or substandard ventilation
Identify hidden energy savings in overventilated spaces
Determine if ventilation is a factor in air quality complaints
Locate the presence of combustion fumes
Use as a reference to calibrate wall mounted CO₂ sensors

TelAire 7001D - Includes CO₂/Temperature Monitor, RH/Temp Datalogger Interface Cable & Graphing Software. This unit allows for measuring, recording and graphing CO₂, Temp and RH. This TelAire monitor features a large ppm display and 0-4 V output, with calibration/flow through port. Package includes 6V power adapter. Battery (4 AA) powered sensor.
(BATTERIES NOT INCLUDED)

Specifications:

Performance CO₂ Channel

Measurement Range:
0 to 10,000 ppm display
Display Resolution:
±1 ppm
Accuracy:
±50 ppm

Performance Temperature Channel

Temperature Range:
Display 32°F to 122°F (0°C to 50°C)
Display Resolution:
0.1°F (0.1°C)
Accuracy:
±2°F (±1°C)
Display Options:
°F or °C

Relative Humidity:

0-95%

Protimeter Hygromaster

RH, Temperature and Dew Point Measurement

Versatile hygrometer that measures humidity, air temperature and dewpoint

The Protimeter HygroMaster is an easy to use hygrometer with built in data logging capability. The HygroMaster is a hand-held instrument for taking spot measurements and for logging humidity and temperature values. Quick measurements of relative humidity, dew point, mixing ratio (grains per pound/parts per million by weight) and ambient temperature are shown on a split display at the touch of a button.

Functions and Features

Measurements that can be displayed on the Hygromaster are:
Air temperature
Dew point temperature
Mixing ratio/absolute humidity/grains per pound
Surface temperature
Surface proximity to dew point

Data Logging Functions

The ability to record readings instantly at the push of a button or leave the instrument in a place over a period of time makes the Hygromaster ideal for many applications including:

Concrete floor moisture measurement
Indoor air quality
Environmental health
HVAC
Flood restoration

The Hygromaster can be set to record measurements over time. The data logger can be set and activated from instrument buttons or from a PC. Measurements can be saved and displayed in a tabular or graphical form. The user selects four data logging parameters listed below:

Logging interval: 1 minute to 24 hours
Delayed start logging: 1 minute to 24 hours
Number of logs: maximum of 398 records
Job number: range from 1 to 15

Specifications

Weight: 4oz
Display: LCD
Standard Supply:
Hand-held Hygromaster, Hygrostick humidity sensor, velcro pouch with belt loop and instructions.
Hygrostick Data (Nominal):
30% to 40% RH (±3% RH)
41% to 90% RH (±2% RH)
32% to 122°F (0°C to 50°C) ±0.6°F (±0.3°C)
Dimensions : 0 0.3 in x 2 in (8mm x 50mm)
Humistick Data (Nominal)
0% to 10%RH, ±3% RH at 68°F to 86°F (20°C to 30°C)
10% to 90% RH, ±3% RH at 68°F to 86°F (20°C to 30°C)
90% to 100% RH, ±3% RH at 68°F to 86°F (20°C to 30°C)
32°F to 122°F (0°C to 50°C) ±0.6°F (±0.3°C)
Dimensions: 0 0.6 in x 2.5 in (16 mm x 65 mm)
Warranty: 1 year parts & labor



120301

PART #	PRODUCT DESCRIPTION	LIST PRICE	ems PRICE
TEMPERATURE / RELATIVE HUMIDITY METERS			
120301	Protimeter Hygromaster w/ Temperature & Relative Humidity Meter (Digital Display)	\$360.00	\$319.00
Humisticks and optional Software Package Available call for details			
120310	TelAire 7001D CO ₂ , Temperature & RH Monitor	\$550.00	\$550.00

Temperature/ Relative Humidity Meters



120274

Fluke 971 Temperature & Humidity Meter

Temperature and humidity are two important factors in maintaining optimal comfort levels and good indoor air quality. Quickly and conveniently take accurate humidity and temperature readings with the Fluke 971. The Fluke 971 is invaluable for facility maintenance and utility technicians, HVAC-service contractors, and specialists who assess indoor air quality (IAQ). Lightweight and easy to hold, the Fluke 971 is the perfect tool for monitoring problem areas. With a rugged holster and twist-open protective sensor cover, the Fluke 971 is built to perform and made to last.

Features

- Backlit dual display of humidity and temperature
- Measures dew point and wet bulb temperatures
- 99 record storage capacity
- Ergonomic design with belt clip and protective holster
- Quick-response capacitance sensor with twist-open protective cover
- Compact and lightweight (188 g/6.6 oz)
- Temperature range from -20 °C to 60 °C (-4°F to 140 °F)
- Relative humidity from 5 % to 95 %
- Min/Max/Avg Data hold
- Low battery indicator

Specifications

- Temperature range: -20°C to 60°C (-4°F to 140°F)
- Temperature accuracy:
 - 0°C to 45°C (±0.5°C)
 - 20°C to 0°C & 45°C to 60°C (±1.0°C)
 - 32°F to 113°F (±1.0°F)
 - 4°F to 32°F & 113°F to 140°F (±2.0°F)
- Resolution: 0.1°C / 0.1°F
- Response Time (Temperature): 500 ms
- Temperature Sensor Type: NTC
- Relative Humidity Range: 5% to 95% RH
- Relative Humidity Accuracy: 10% to 90%RH @ 23 °C (73.4°F) (±2.5%RH) (<10%, > 90%RH @23°C (73.4°F) (±5.0%RH)
- Humidity Sensor: Electronic capacitance polymer film sensor.
- Data storage capacity: 99 points
- Response Time (Humidity): For 90% of total range - 60 sec. with 1m/s air movement

Environmental Specifications

- Operating temperature:
 - Temperature: -20°C to 60°C
 - Humidity: 0°C to 55°C
- Storage temperature: -20°C to 60°C at < 80% R.H. (with battery removed)
- Mechanical & General Specifications
- Weight: 190 g (6.7 oz)
- Dimensions: 194mm x 60mm x 34mm
- Battery type: 4 AAA alkaline batteries
- Battery life: 200 Hours



Digital Relative Humidity & Temperature Pen

- Dual LCD display for temperature, humidity and advanced function indication
- Measures temperature (°C/°F) and relative humidity simultaneously
- Built-in temperature and humidity sensors for convenient operation
- Max/Min memory functions for both temperature and relative humidity
- Built-in self calibration utility with optional RH calibration bottles
- Data hold for freezing the LCD display status
- Complete with pocket clip and 3V lithium battery
- Optional kit includes 33% and 75% RH calibration standards and hard vinyl carrying case.



PART #	PRODUCT DESCRIPTION	LIST PRICE	ems PRICE
TEMPERATURE / RELATIVE HUMIDITY METERS			
120333	ems Digital Relative Humidity & Temperature Pen	\$59.00	\$54.95
120334	ems Digital Relative Humidity & Temperature Pen w/ Calibration Kit	\$99.95	\$95.00
120274	Fluke 971 Temperature Humidity Meter	\$179.00	\$179.00

Psychrometer and Infrared Laser Thermometers

EXTECH

Temperature / Humidity Datalogger

Compact, powerful and easy to use
Records up to 16,000 readings

- Multiple Dataloggers can be programmed and data downloaded from one single docking station.
- Records Relative Humidity and Temperature in storage containers, shipping vans, freezers and more
- Program the logger, analyze and store data using Windows 95/98/NT/ME/XP compatible software
- Logs data for days, weeks or months - up to 1 year battery life
- Programmable sampling rate from 1 second to 2 hours
- View both humidity and temperature on LCD display



120332

EXTECH

Digital Psychrometer RH300

Specifications:	Range	Max Resolution	Basic Accuracy
Humidity	10 to 90%RH	0.1%RH	±3%RH
Temperature (internal)	-4 to 122°F (-20 to 50°C)	0.1°	±1°F or ±0.6°C
Temperature (external)	-4 to 158°F (-20 to 70°C)	0.1°	±1°F or ±0.6°C
Dew Point	-90.4 to 122°F (-68.0 to 49.9°C)		
Wet Bulb	-6.9 to 122°F (-21.6 to 49.9°C)		
Dimensions	7x1.9x1" (178.5x48.4x24.7mm)		
Weight	3.3oz (95g)		

Simultaneously display of %RH, Temperature and Dew Point or Wet Bulb or Probe Temperature

Wet bulb measurements without slinging

Calculates T1-T2 differential using optional probe and T2 dew point
Unique sensor cap design twists to closed position for protection during storage

Switchable °F/°C temperature units with 0.1 resolution

Data Hold freezes current reading on display

Max / Min readings

Auto power off to save batteries

Optional external temperature probe (TP890)

Optional kit RH305 includes RH300, temperature probe, 33% and 75% calibration bottles, and carrying case



120335

Features:

Measures to 600°F without contact
Large LCD display with backlighting
Built-in laser pointer to improve aim
oF/oC switchable
Fixed emissivity (0.95) covers 90% of surface applications
Narrow field of view

Audible and visible overrange indicators
Automatic Data Hold
Pocket size meter
Complete with 9V battery
Dimensions: 6.7x1.7x1.6" (170x44x40mm)
Weight: 6.4 oz
Field of View: 6:1
Measurement Accuracy: ±2% of reading

Applications:

Measures surface temperature of objects that are difficult to reach or unsafe to contact.
Measures hot spots in electrical panels and equipment
In-process temperature measurements.



120330

EXTECH

InfraRed Laser Thermometer



120270

Now Introducing the Fluke 62 Mini!

The Fluke 62 Mini non-contact thermometer is the perfect introduction to infrared (IR) thermometers for the professional. With the best accuracy in its class, the Fluke 62 Mini offers quick and reliable surface temperature readings. This compact and portable tool enables professionals to diagnose heating and ventilation problems and monitor the temperature of electrical motors and electrical panels without contact. Rugged enough for industrial environments with its protective rubber "boot", the 62 Mini also comes with a handy nylon holster, keeping quick temperature checks at your fingertips.

Specifications

Backlit display for use in poorly lit areas
Holds temperature readings
Range: 30 to 500 °C (-20° to 932 °F)
Distance to spot ratio: 10:1 at 80% energy
Emissivity: Fixed at 0.95
Measurement Accuracy: 10 °C to 30 °C (50 °F to 86 °F): ± 1 °C (2 °F)
Outside 10 °C to 30 °C (50 °F to 86 °F): ± 1.5 °C (3 °F) or ± 1.5 % of reading, whichever is greater

Fluke

62 Mini InfraRed Laser Thermometer

PART #	PRODUCT DESCRIPTION	LIST PRICE	ems PRICE
PSYCHROMETER / INFRARED LASER THERMOMETERS			
120335	Digital Psychrometer RH300	\$89.00	\$89.00
120330	Mini InfraRed Thermometer w/ Laser Pointer	\$99.00	\$69.00
120270	Fluke Mini InfraRed Laser Thermometer	\$99.00	\$99.00
120332	Extech Temp/Humidity Datalogger	\$155.00	\$149.00

Anemometers

mini Thermo Anemometer

- Fold up protective housing extends to 9" for better reach
- Large dual display of air velocity and temperature
- Data hold to freeze most recent display
- Auto shutoff 20 minutes after last key is pressed
- Water resistant housing floats and drop tested to 6 feet
- Complete with CR2032 lithium battery and lanyard

Windspeed

- Measures ft/min, MPH, m/s, km/h, Knots and Beaufort Force
- Selectable averaging function of 5, 10 or 13 second intervals
- Replaceable non-corrosive plastic wind vane (impeller)

Temperature & Windchill

- Measures from 0 to 122°F (18 to 50°C)



800216


Pocket Hygro-Thermo-Anemometer

- Ergonomic pocket size housing with large dual LCD simultaneous display of temperature and air velocity
- Data hold to freeze the display value
- Records Min/Max readings
- Built-in low friction vane wheel improves accuracy of air velocity in ft/min, MPH, m/s, km/h and knots
- Built in precision thin-film capacitance humidity sensor for fast response
- Built in thermistor for ambient temperature measurements
- High temperature measurements using type K thermocouple
- Defaults to last function when powered off
- Auto power off 10 minutes after last key is pressed with disable feature
- Low battery and overrange indication
- Complete with built-in humidity sensor and vane wheel, wrist strap and 9V battery (optional type K thermocouple probe)



800217

PART #	PRODUCT DESCRIPTION	LIST PRICE	ems PRICE
ANEMOMETERS			
800216	Mini Thermo Anemometer	\$89.00	\$89.00
800217	Pocket Hygro-Thermo- Anemometer w/ Light Meter (Combines: Light Meter, Humidity Meter, Thermometer & Anemometer)	\$149.00	\$149.00



Better Technology. Better Results.

Proud to Manufacture in the USA



IAQ MICROSCOPES, SLIDES, ACCESSORIES & ANALYTICAL SUPPLIES



Olympus IAQ Microscopes.....46

Microscope Slides and Coverslips47

Microscope Accessories47

IAQ Analytical Supplies & Accessories.....48



Olympus IAQ Microscopes



400508

Olympus CX21

Brightfield Biological Microscope

The CX21 is an economically priced microscope that achieves a high standard of optical and mechanical quality.

The CX21's newly designed stand has a slim body design, allowing the user to operate the coarse and fine focus comfortably while keeping the hands on the desk.

Features & Benefits:

- Easy to use & dependable
- Highly rigid frame and easy-to-use design offer great reliability and long term durability
- Conveniently placed controls and a slim base make for comfortable viewing and efficient adjustments
- A plano concave mirror or brightfield observation
- An opening in the arm of the frame allows viewing the specimen stage in situations that require the frame to be placed backwards, so the mirror can capture light when emanating from in front of the user
- Halogen Light Source

Olympus CX31

Brightfield Biological Microscope

The Olympus CH biological microscopes, which have gained an outstanding worldwide reputation, now give rise to the new CX31 with USI infinity optics. The Universal Infinity System optics are the same well-known and advanced optical system featured in the highest quality Olympus Microscopes. Evolved from Olympus' best selling CH series, the new CX models improve all around performance and offer even greater efficiency.

- Newly-developed infinity corrected Plan C Achromat objectives offer exceptional flatness producing sharp, clear images right up the edge of the field of view (4x, 10x, 40x, 100x oil)
- Anti-fungus treatment helps protect optical parts even in high humidity regions
- Inward-facing, quadruple (CX31), or quintuple (CX41) revolving nosepiece improves access and makes for quick, easy slide changes
- Fixed Abbe condenser N.A. 1.25, centerable and focusable for Köhler illumination
- A 6V/30W halogen bulb provides ample illumination for any observation
- Ergonomically designed frame with low positioned coarse and fine focusing controls, analyzer slot for linear polarized light (CX41 only), and convenient handgrips at the front and back for transportation; integrated field stop
- Built in left or right hand stage with rackless design (CX31 right hand only), low positioned X,Y controls with ergogrips to facilitate operation



400507

PART #	PRODUCT DESCRIPTION	LIST PRICE	ems PRICE
MICROSCOPES			
400508	Olympus CX21 Biological Microscope	\$1,099.00	\$979.00
400507	Olympus CX31 Brightfield Microscope CX21 & CX31 Biological Scopes come with 4x, 10x, 40x, 100x (Brightfield 60x Achromat Objectives Available)	\$1,699.00	\$1,549.00

For a
**COMPLETE LIST OF
 MICROSCOPE PARTS
 & ACCESSORIES**
 please refer to
PAGES 85-86
 of this catalog.

Microscope Slides, Coverslips and Accessories

1 Gross = 144 Microscope Slides, 1 Box = 72 Microscope Slides, 2 Boxes (of 72 ea) = 1 Gross (144 ea)



400152



100 Capacity Economy
Catalog # 400172

**call for
quantity
pricing**
800.293.3003



PART #	PRODUCT DESCRIPTION	LIST PRICE	ems PRICE
MICROSCOPE SLIDES			
400140	1" x 3" Plain Microscope Slides, 1.2mm, 1 gr. (2 Boxes, 144 ea.) Erie Top Brand Slides Pre-Cleaned	\$16.50	\$14.50
400141	1" x 3" Plain Microscope Slides, 1.2mm, 1 gr. (2 Boxes, 144 ea.) Premiere 9100 series	\$9.50	\$8.50
400142	1" x 3" Plain Microscope Slides, 1 gr. (2 Boxes, 144 ea.) Standard Abco Brand, No Paper Between Slides	\$15.99	\$13.99
400143	1" x 3" Plain Microscope Slides, 1.2mm, 5 gr. (10 Boxes, 720 ea.) Premiere 9100 series	\$44.95	\$39.95
400145	1" x 3" Plain Microscope Slides, 1.2mm, 10 gr. (20 Boxes, 1,440 ea.) Premiere 9100 series	\$74.95	\$69.95
400147	1" x 3" Plain Microscope Slides, 1.2mm, 30 gr. (60 Boxes, 4,320 ea.) Premiere 9100 series	\$169.00	\$165.00
400148	1" x 3" Plain Microscope Slides, 1.2mm, 25 gr. (Grafcop Paper Between Slides) (50 Boxes, 3600 ea.)	\$139.00	\$135.00
400149	1" x 3" Frosted Slides, 1gr. (2 Boxes, 144 ea.) Premiere 9100 series	\$9.95	\$8.95
400150	1" x 3" Frosted Slides, 1 gr. Erie Top Brand Slides (2 Boxes, 144 ea.) Pre-Cleaned	\$17.50	\$16.50
400151	1" x 3" Frosted Slides, 5 gr. (10 Boxes, 720 ea.) Premiere 9100 series	\$42.50	\$39.00
400152	1" x 3" Frosted Slides, 1 gr. Standard Abco Brand, No Paper Between Slides, Frosted on both ends (2 Boxes, 144 ea.)	\$15.50	\$13.99
400153	1" x 3" Frosted Slides, 10 gr. (20 Boxes, 1,440 ea.) Premiere 9100 series	\$85.00	\$79.00
400155	1" x 3" Frosted Slides, 30 gr. (60 Boxes, 4,320 ea.) Premiere 9100 series	\$229.00	\$209.00
COVERSLIPS			
400157	18 x 18mm Coverslips, #1.5, 1 oz. (Chase Brand) (Approx. 100 ea.)	\$5.00	\$3.95
400158	18 x 18mm Coverslips, #1.5, 10 oz. (Chase Brand) (Approx. 1,000 ea.)	\$36.00	\$34.00
400159	22 x 22mm Coverslips, #1.5, 1 oz. (Chase Brand) (Approx. 100 ea.)	\$5.00	\$3.95
400160	22 x 22mm Coverslips, #1.5, 10 oz. (Chase Brand) (Approx. 1,000 ea.)	\$40.00	\$36.00
400161	22 x 22mm Coverslips, #1.5, 1 oz. (Esco Brand "Premium") (Approx. 100 ea.)	\$5.00	\$3.95
400163	22 x 22mm Coverslips, #1.5, 10 oz. (Esco Brand "Premium") (Approx. 1,000 ea.)	\$45.00	\$39.95
400165	22 x 30mm Coverslips, #1.5, 1 oz. (Esco Brand "Premium") (Approx. 100 ea.)	\$5.00	\$3.95
400167	22 x 30mm Coverslips, #1.5, 10 oz. (Esco Brand "Premium") (Approx. 1,000 ea.)	\$45.00	\$39.95
ACCESSORIES			
400168	2 Capacity Slide Mailers / ea. (holds 2 slides - cardboard)	\$0.89	\$0.79
400168-P	2-Capacity Mailers / each (Holds 2 Slides - Plastic)	\$0.89	\$0.79
400169	25 Slide Capacity Slide Box	\$4.75	\$3.95
400170	5 Capacity Slide Holders	\$0.99	\$0.69
400171	100 Slide Capacity Slide Box (Deluxe w/ foam bottom & metal front hinge)	\$7.95	\$7.50
400172	100 Slide Capacity Slide Box (Economy) Unlined	\$5.95	\$5.50
400173	Slide Holder, 20 Slide Capacity	\$6.95	\$5.95
400174	Immersion Oil Type A 1/4 ounce	\$2.95	\$2.50
400175	Immersion Oil Type A 1 ounce	\$5.95	\$4.95
400176	Olympus Brand Lens Paper 50 sheets/pack	\$2.00	\$2.00
400177	Canned Air	\$8.95	\$7.95
400212	60X Achromat Objective	\$400.00	\$395.00
600149	Lactic Acid 100ml (85%)	\$19.95	\$19.95
600150	Lactic Acid 500ml (85%)	\$39.95	\$39.95
600151	15ml (1/2oz) Drop Dispensing Bottle	\$1.99	\$1.99

IAQ Analytical Supplies and Accessories

PART #	PRODUCT DESCRIPTION	LIST PRICE	ems PRICE
ANALYTICAL SUPPLIES AND ACCESSORIES			
120127	Basic Fuchsin Stain	\$12.95	\$12.95
120129	LPC Blue Stain	\$15.95	\$15.95
700103	Mortar & Pestle Set, 1155mm O.D.	\$77.00	\$74.95
700104	Petri Dish 100MM 500/case	\$79.00	\$75.00
700105	Mortar Only	\$49.00	\$43.95
700107	Pestle Only	\$35.00	\$29.95
700108-S	Latex Gloves w/ Powder 100/ea (Small)	\$12.95	\$11.95
700108-M	Latex Gloves w/ Powder 100/ea (Medium)	\$12.95	\$11.95
700108-L	Latex Gloves w/ Powder 100/ea (Large)	\$12.95	\$11.95
700109-S	Latex Gloves w/o Powder 100/ea (Small)	\$12.95	\$11.95
700109-M	Latex Gloves w/o Powder 100/ea (Medium)	\$12.95	\$11.95
700109-L	Latex Gloves w/o Powder 100/ea (Large)	\$12.95	\$11.95
700110-L	Nitrile Gloves, Disposable, w/o powder 100/ea (Large)	\$12.95	\$8.95
700110-XL	Nitrile Gloves, Disposable, w/o powder 100/ea (X-Large)	\$12.95	\$8.95
700113	Glassine Paper, 4" x 4" 500/pk	\$12.50	\$12.50
700152	Amber 1 oz. Dropper Bottles	\$3.25	\$2.99
700153	Amber Bottles, 1/4 oz.	\$1.75	\$1.75
700154	Amber Bottles, 1/4 oz. w/ Dispenser	\$1.50	\$1.50
700155	Amber Bottles, 1 oz.	\$2.25	\$1.99
700156	Amber Bottles, 1 oz. w/ Dispenser	\$1.75	\$1.75
700157	Whirl-Pak Bag, Clear 2 oz. 500 ea., 3" x 5", 60ml capacity	\$40.95	\$38.95
700159	Whirl-Pak Bag, Write-On, 4 oz. 500 ea., 120 ml capacity 3" X 7 1/4"	\$44.95	\$39.95
700161	Whirl-Pak Bag, Write-On, 2 oz. 500 ea., 3" x 5", 60ml capacity	\$44.95	\$39.95
700167	Zip-Bag 3 x 5 "Danger" 1000 ea.	\$65.00	\$60.00
700168	Zip-Bag 3 x 5 "Danger" 500 ea.	\$39.00	\$35.00
700169	Zip-Bag 3 x 5 Write-On 1000 ea.	\$33.00	\$28.00
700170	Zip-Bag 3 x 5 Write-On 500 ea.	\$16.00	\$15.00
700171	Zip-Bag 3 x 5 Clear 4ml 500 ea.	\$24.95	\$19.95
700172	Zip-Bag 10 x 13 Write-On 1000 ea.	\$129.00	\$119.00
700173	Zip-Bag 10 x 12 Clear 2ml 1000 ea.	\$99.00	\$89.00
700174	Zip-Bag 10 x 12 Clear 2ml 100 ea.	\$12.95	\$9.95
700175	Red Gauge Oil, 4 oz.	\$11.95	\$8.95
700177	Red Gauge Oil, 16 oz.	\$25.95	\$21.95
700179	Red Gauge Oil, 32 oz.	\$34.95	\$29.95





REMEDATION & SAFETY PRODUCTS

Containment System.....	50
Manometers	51
Negative Air Machines and Air Scrubbers	52-53
Air Sanitizing System.....	54
IAQ Disinfectants & Coatings.....	55
Hepa Vacuums, Filters & Accessories	56-57
Respirators, Filters & Accessories	58-59
Protective Apparel & Accessories	60



Containment System



NEW! ZipWall® 4 Pack Plus

Package includes four ZipWall® SLP™ 12' spring-loaded poles, two Foam Rail™ cross-bars, two ZipWall® Zippers, four Grip Disk™ slide stoppers, and a ZipWall® Carry Bag (plastic sheeting not included).

ZipWall's® SLP™ spring loaded poles are made of anodized aluminum, making them durable and lightweight (less than 1.8 lbs. each). Attach the five-foot Foam Rail™ to tightly seal your barrier to the ceiling. Use the ZipWall® Zipper to create a re-sealable entrance into the work area, and slip in the ZipWall® Grip Disks™ to stabilize poles on slick surfaces. Pack it all away in the ZipWall® Carry Bag.



PART #	PRODUCT DESCRIPTION	LIST PRICE	ems PRICE
CONTAINMENT SYSTEM AND ACCESSORIES			
110604	ZipWall® 4 Pack Plus with 12' poles Package includes four ZipWall® SLP™ 12' spring-loaded poles, two Foam Rail™ cross-bars, two ZipWall® Zippers, four Grip Disk™ slide stoppers, and a ZipWall® Carry Bag (plastic sheeting not included).	\$279.00	\$269.00
110601	ZipWall Spring Loaded Poles (2 Poles & 2 Grip Disks)	\$139.00	\$129.00
110602	Carry Bag For ZipWall Poles	\$69.00	\$59.00
110603	Adhesive Zippers For ZipWall (2PK)	\$14.99	\$13.99
110605	ZipWall Foam Rails (2PK)	\$72.95	\$69.00

Manometers & Vaneometer

Omniguard⁴

Features

- New case design; operate your Omniguard 4 with the lid closed! A window built into the lid lets you view the display while the case is closed, ensuring a watertight unit and less dirt. Less dirt, means fewer printer problems
- New logs let you name and save multiple jobs. Print the current job or any previous job at anytime
- 40+ days of logging capacity!
- New paper feed path allows printing from any position
- Built-in USB and Serial ports. Supports off-site remote monitoring using the optional external modem
- Same great color, bold yellow!
- 20% larger LCD with white LED backlit enhances visibility, near or far
- New side clip lets you hang Omniguard
- Rotating screen
- Multiple screens; enlarged pressure reading or the standard monitoring screen

The Omniguard 4 is a differential pressure recorder in a completely self-contained package, designed from the beginning to be extremely flexible yet easy to use. The included accessories, owner's manual, hose, a spare roll of paper and AC cord, store easily in the lid. There's no AC adapter to keep track of. It's easy to find a convenient spot to place the unit since the Omniguard 4 is not position sensitive and can be hung by a nail. Accurate measurements continue even if the unit is dropped or moved.

The backlit graphics display provides the easiest setup possible. Pressure is indicated with large easy to read characters and alarm setpoints are always displayed. Screen icons show the monitoring, printer and audible alarm status with a glance. Detailed information for job setup, feature settings and operating instructions are available on-screen at any time by pressing the Help key. Troubleshooting topics are also covered.

Pressure readings are time stamped and logged into memory once containment has been established. Audible and visual alarms activate whenever the pressure reaches the alarm setpoints.

The Omniguard 4 ensures the site inspector that proper containment was maintained. Logs and summary reports can be printed at any time for easy inspection of the monitoring data. Durable and reliable, the Omniguard 4 is clearly the contractors choice for containment monitoring.



Features & Applications:

Applications include; pressure drops across fans or filters, flow pressure measurements and positive/negative pressure measurements in compressed air control systems. Design elements include a very compact size, one-button operation, automatic power off, magnetic back for hands-free operation and flexible hose included.

Features:

- One button easy operation
- Not position sensitive
- Compact size fits in pocket or tool box
- Auto-off function
- Displays H₂O, PSI, or hPa
- Battery and hoses included

Spec Summary:

Measuring Range: $\pm 4"$ & $\pm 80"$ H₂O
 Overload: 120" H₂O
 Resolution: 0.001/0.01 in H₂O
 Accuracy: $\pm 0.01"$ H₂O ($< 0.4"$)
 $\pm 1.5\%$ of fs (0.4 to 4" H₂O)
 0.4" + 1% of mv ($> 4"$ H₂O)
 Operating Temperature: 32 to 104°F
 Storage Temperature: -4 to 158°F
 Battery: 2 x CR2032
 Battery Life: Approx. 150 hours

Applications:

- Adjusts fans and blowers
- Setting pressure switches
- Filter monitoring
- Precise draft monitoring

TESTO 506-3

Mini Digital Manometer

Displays hPa/mbar, mmH₂O, mmHg, inH₂O, or PSI



700102

700101

PART #	PRODUCT DESCRIPTION	LIST PRICE	ems PRICE
MANOMETERS AND VANEOMETER			
800201	Omniguard 4 Professional Pressure Recorder	\$1,350.00	\$1,199.00
800205	Omniguard 4 Thermal Paper 5/rls (can be used w/ Omniguard III or 4)	\$26.50	\$26.50
800211	Testo 506-3	\$179.00	\$179.00
700101	Vaneometer	\$29.00	\$26.95
700102	Manometer Model 25 Mark II	\$35.00	\$33.50



800211

Negative Air Machine and Portable Air Scrubber

BULLDOG™ 2K **NEGATIVE AIR MACHINE**



700350

***COVERS OVER 20,000
CUBIC FEET OF SPACE!***

Features

CABINET CONSTRUCTION:

Rotational Molded Polyethylene Cabinet. Meets UL, OSHA, CSA electrical safety and UL94 flammability standards.

AIR FLOW RATINGS:

2 SPEEDS : (Speed 1 = 1,000cfm+) (Speed 2 = 2,000cfm+) The Bulldog 2K has certified airflow of over 2,000 cfm.

FILTERS:

1" Ring Panel Pre-Filter (Included with unit)

2" Pleated Particulate Pre-Filter (optional)

2nd Stage Carbon Filter (optional)

Metal Frame HEPA Filter (Included with unit)

(HEPA Filter: Certified to an efficiency of 99.97% or higher against 0.3 micron size particles.)

DUCTING REQUIREMENTS:

Accommodates 12" Ducting

DIMENSIONS & WEIGHT:

30½"L x 27½"W x 32"H:

121 lbs (including filters): 24 lbs. lighter than other full-size machines.

POWER SUPPLY:

<12 Amps: Safe for use on 15 Amp circuits.

TRANSPORTABILITY:

Casters: (2 Fixed & 2 Swivel, With Locking Foot Brakes)

Introducing the Revolutionary Bulldog™ 2K Negative Air Machine. The advanced technology, design and superior quality of the new Bulldog 2K negative air machine clearly makes it one of the best in the industry. This ultra-lightweight negative air unit, with heavy-duty performance, uses HEPA filters that are certified to an efficiency of 99.97% or higher against 0.3 micron size particles. THIS UNIT COMES EQUIPPED WITH EXHAUST COLLAR, CLAMP, CORD, 1" RING PANEL PRE-FILTER AND METAL FRAME HEPA FILTER.

PART #	PRODUCT DESCRIPTION	LIST PRICE	ems PRICE
NEGATIVE AIR MACHINE			
700350	Bulldog 2K Negative Air Machine Comes with exhaust collar, clamp, cord, 1" Ring Panel Pre-Filter (1ea) & Metal Frame HEPA Filter (1ea)	\$995.00	\$995.00
700352	Bulldog 1" Ring Panel Pre-Filter (12 per case)	\$72.00	\$72.00
700353	(Special Order Only) Bulldog 2" Pleated Particulate Pre-Filter (12 per case)	\$72.00	\$72.00
700354	(Special Order Only) Bulldog Optional Second Stage Carbon Filter (6 per case)	\$240.00	\$240.00
700355	(Special Order Only) Bulldog Replacement Metal Frame HEPA Filter (1ea)	\$170.00	\$170.00
700356	Clear Mylar Ducting 12" Diameter, 25' Length (4 per case)	\$100.00	\$100.00

Negative Air Machine and Portable Air Scrubber

PREDATOR 1200 PAS

PORTABLE AIR SCRUBBER

COVERS UP TO 10,000 CUBIC FEET OF SPACE!



700357

The Predator 1200 PAS delivers heavyweight performance in a lightweight, virtually indestructible rotational molded cabinet. With a lifetime cabinet warranty, the Predator 1200 weighs just 70 lbs. and provides a peak airflow of 1,000 cfm, giving it more power-per-pound than any other lightweight units. The Predator 1200 is ultra quiet with an operational sound level of only 62-67 dBA taken at 5 feet. THIS UNIT COMES EQUIPPED WITH BUILT-IN INTAKE, EXHAUST, CORD, 1" FIRST STAGE PRE-FILTER, 2" SECOND STAGE PRE-FILTER, AND HEPA FILTER.

Features

CABINET CONSTRUCTION:

UL94HB Flame Retardant Resin with an EPA registered microbial growth inhibitor.

AIR FLOW RATINGS:

4 SPEEDS :

(Speed 1 = 300cfm) (Speed 2 = 600cfm) (Speed 3 = 800cfm) and (Speed 4 = 1,000cfm)

FILTERS:

1" First Stage Coarse Particulate Pre-Filter (Included with unit)

2" Second Stage Pleated Particulate Pre-Filter (Included with unit)

3rd Stage Carbon Filter Pack (optional)

Cylindrical HEPA Filter (Included with unit)

(HEPA Filter: Certified to an efficiency of 99.97% or higher against 0.3 micron size particles.)

DUCTING REQUIREMENTS:

Accommodates 10" Ducting

DIMENSIONS & WEIGHT:

22"L x 24"W x 42"H:

70 lbs (including filters)

POWER SUPPLY:

115 volts, 15 amps: Normal operating amps per unit in less than 3.5amps. (Low amperage draw allows you to "Daisy-Chain" up to three units on one 115-volt/15-amp circuit.)

TRANSPORTABILITY:

2 each 8" solid, non-marking rubber wheels in rear and 2 each 360° swivel casters in front.

MOTORIZED IMPELLER:

400 watt motorized impeller with thermal overload protection, auto reset, 60Hz, single phase.

PART #	PRODUCT DESCRIPTION	LIST PRICE	ems PRICE
PORTABLE AIR SCRUBBER			
700357	Predator 1200 PAS Portable Air Scrubber: Intake, Exhaust and Cord are "built-in". Comes with 1st Stage Pre-Filter (1ea), 2nd Stage Pre-Filter (1ea) & Cylindrical HEPA Filter (1ea)	\$1,875.00	\$1,875.00
700358	Predator 1" First Stage (12 per case)	\$16.60	\$16.60
700359	(Special Order Only) Predator 2" Second Stage Pre-Filter (6 per case)	\$30.00	\$30.00
700360	(Special Order Only) Predator Optional Third Stage Carbon Filter (6 per case)	\$180.00	\$180.00
700362	(Special Order Only) Predator Replacement Cylindrical HEPA Filter (1ea)	\$140.00	\$140.00
700363	10" Exhaust Locking Clamp (1ea)	\$22.00	\$22.00
700364	Clear Mylar Ducting 10" Diameter, 25' Length (6 per case)	\$100.00	\$100.00

Air Sanitizing System

AiroCide™



NASA Technology Eradicates Airborne Pathogens*

No More Indoor Air Pollution. Finally, Clean Indoor Air!

No Ozone- No Filters

AiroCide Air Improvement™ System

The patented AiroCide technology combines two known pathogen-killing techniques, Photocatalytic oxidation (PCO) and ultraviolet light to destroy harmful airborne microbes. A titanium dioxide photocatalyst is used in the PCO process. These active elements will oxidize volatile organic compounds (VOC's) adsorbed on the catalyst surface and kill and decompose airborne pathogens.

AiroCide Helps Solve Your Indoor Air Problems

- No Ozone – No Filters
- Easy to Install – Inexpensive to Operate
- No costly Clean Ups
- Low Maintenance
- Self Cleaning, No Harmful By Products
- Safe, Operates 24/7
- Low Energy Requirement
- Eliminates Gaseous Chemicals, VOC's and Odors
- Not Affected by Humidity
- Compatible with Existing Airflow Systems
- Enhances Air Mixing with HVAC Systems
- NASA developed for space travel

Applications:

Mold Remediation
Multi-Family Housing
Healthcare Settings
Long Term Care
Education
Government
Industrial
Child Care
Military



clinically tested



healthcare



child care

* Listed as an FDA Class II Medical Device. Clinically proven and field tested to kill/ remove/ eliminate airborne pathogenic and non-pathogenic microorganisms in vegetative and spore states (bacteria, mold & fungi, viruses, and dust mites), allergens, odors and harmful volatile organic compounds(VOC's) in Medical/ Healthcare, Residential Consumer Households, Child Care, Mold Remediation, Fitness and Sport Facilities, Corrections Facilities and Food Preservation applications.

Construction:

Aluminum and Stainless Steel

Electrical:

120VAC, 2amp, 8 watt ultraviolet light bulbs, 6-120 VAC bulb ballasts, 8ft cord

Controls:

On/Off switch

Maintenance:

UV bulbs require annual replacement

Specifications & Pricing

	ACS-25	ACS-50	ACS-100	Bulb Kit ACS-25	Bulb Kit ACS-50	Bulb Kit ACS-100
Range	1,000F ³ to 1,500F ³ (small room)	15,000F ³ to 30,000F ³ (low traffic area)	25,000F ³ to 50,000F ³ (high activity)	-	-	-
Length	16"	30"	46.5"	12"	12"	13"
Width	14.75"	30"	24.5"	4.75"	4.75"	7.35"
Height	3.1"	3.5"	3.5"	4.5"	4.5"	4.5"
Weight	12 lbs.	30 lbs.	59 lbs	1 lb.	2 lbs.	4 lbs.
Price	\$1,195	\$2,695	\$4,850	\$65	\$225	\$499

IAQ Disinfectants & Coatings



**Disinfectant Solution
(Spray & Gallon Sizes)
#120935 & 120937**

Cleans, disinfects and deodorizes! Non-staining and non-abrasive. Continuous residual bacteriostatic activity for up to 6 months! Compatible with plastics, wood, glass and metals. A perfect disinfectant for cleaning all IAQ equipment including respirators, pumps, impactors and wall checks! Reduce the liability of cross-contamination! Case pricing available!



**Disinfectant Towelettes
(Canister) #120933**

The only disinfectant wipe accepted by the EPA & FDA to date! A perfect wipe to clean your impactors, borescopes, respirators and much more. An ideal way to minimize cross-contamination! Available in canisters with 180 wipes per canister. Case pricing available!

Full Line Distributor For FIBERLOCK

Call For More Available Products: 1.800.293.3003

ShockWave is an EPA-registered, quaternary ammonium chloride cleaner, disinfectant and sanitizer designed for use on various surfaces subject to microbial contamination. ShockWave is a concentrated formula that will disinfect hard, nonporous surfaces, and also sanitizes porous and semi-porous surfaces. ShockWave is especially useful as an all-in-one product for treating wood structural members, carpets, and other porous and nonporous surfaces as part of a complete mold remediation project. ShockWave is designed to be diluted two ounces per gallon of water*, yielding 64 gallons of usable product per gallon of concentrate, making it an economical solution for your cleaning, disinfecting, and sanitizing needs.

Fiberlock IAQ 6000 is an extremely durable coating developed to withstand moist, humid conditions that provide the ideal environment for fungal growth. This easy to apply, 100% acrylic coating offers the ultimate in durability in combination with excellent mold resistance. Fiberlock IAQ 6000 contains an EPA-registered, broad-spectrum fungicide to prevent the growth of mold on the surface of the cured film. Plus, its smooth finish minimizes dirt buildup that provides nutrients for mold growth. Fiberlock IAQ 6000 is recommended for use on plaster, wallboard, sheetrock, concrete, masonry block, wood, primed metal and galvanized metal. Fiberlock IAQ 6000 does not contain any compounds with toxic metals such as barium, boron or zinc, which are present in other mold-resistant coatings. Fiberlock IAQ 6000 yields a clean white finish; clear and black finishes are also available: IAQ 6100 (Clear) and IAQ 6500 Black.



120953

**clear & black finishes
available**



120950

PART #	PRODUCT DESCRIPTION	LIST PRICE	ems PRICE
DISINFECTANTS & COATINGS			
120933	Sporidicin Disinfectant Wipes 180/canister	\$8.99	\$8.99
120935	Sporidicin Disinfectant Pump Spray 22oz.	\$8.99	\$8.99
120937	Sporidicin Disinfectant Solution 1gal.	\$25.95	\$25.95
120941	Sporidicin Individual Wipes 50PK	\$19.95	\$19.95
120950	Fiberlock ShockWave 1 Gallon Concentrate (Makes 64 gallons)	\$34.95	\$29.95
120953	Fiberlock IAQ 6000 Coating / WHITE FINISH ((also available in black (IAQ 6500))	\$229.00	\$199.00
120954	Fiberlock IAQ 6100 Coating/CLEAR FINISH	\$229.00	\$199.00

Hepa Vacuums, Filters & Accessories

OMEGA Portable 1 Gallon Vacuum



700303

The Omega Abatement Vac is a safe and easy way to remove contaminants such as asbestos, lead residue, atmospheric dust, medical residue and fumes!

The Omega Abatement Vac features a self-contained filtration system that captures hazardous particles as small as 0.3 micron. It includes two filter plugs, disposable bag and tie to prevent particles from escaping into the air or getting on hands and clothes when disposing filter. Plus, its 6' clear hose allows the operator to visually check for any remaining particles in the hose. As with all Omega models, this vac is made from high-impact styrene construction for durability and long life.

Because it is lightweight and portable, the Omega Vac Abatement is ideal for glove bags, ladders, or other hard-to-reach applications. It comes complete with a handy shoulder strap and accessories which store conveniently in the case cover.

Features:

- Hepa Filter - For asbestos, fumes, lead residue, atmospheric dust, etc. It includes two filter plugs, disposable bag and tie for safe disposing of filter.
- Clear 6' Hose - Provides an additional safety feature for the operator.
- Flexible Goose Neck - To get to those hard-to-reach places!
- Crevice Tool & Crevice Tool Brush - To loosen particles in tight areas.
- Utility Nozzle - A 5 1/2" wide tool for cleaning floors, cupboards, etc.
- 220 Volt Model is also available for world-wide use!
- Weights only 12 lbs and is 19.5" x 9" x 6.25"

OMEGA High Capacity 5 Gallon Vacuum



700305

The HCTV5 Abatement Vac has a large 5-gallon capacity, cost effective solution for the user who works with high volumes of fine dry particle debris like that associated with asbestos, lead, indoor air quality, atmospheric dust and medical residue. This hepa vac comes with standard 0.3-micron, 5 gallon, sealable, disposable HEPA filter. It includes a lid to cover the 5-gallon bucket to prevent particles from escaping into the air or getting on hands and clothes when disposing the filter.

Specifications:

115 VAC, 1 phase, 50/60 Hz, 675 watts, UL & CSA listed

Volume: 92.8 cfm open orifice, zero cfm sealed

Vacuum: 28.79 inch water column open orifice
40-inch sealed = 1 inch column

Speed: 20,000 RPM open orifice, 25,000 sealed orifice

Features:

- 5 gallon HEPA filter – for asbestos, fumes, lead residue, atmospheric dust, etc. It includes two filter plugs, disposable bag and tie for safe disposing of filter.
- Clear 9' hose that allows the operator to visually check for any remaining particles in the hose.
- Foot switch for easy hands-free operation
- Convenient, detachable roller base
- Powerful 115V, 675 watt, 50/60 Hz, UL & CSA listed
- Volume is 92.8 cfm open orifice, zero cfm sealed
- Vacuum is 28.79 inch water column open orifice (40-inch sealed = 1 inch column)
- Speed is 20,000 RPM open orifice; 25,000 sealed orifice

PART #	PRODUCT DESCRIPTION	LIST PRICE	ems PRICE
HEPA VACUUMS			
700303	Omega Supreme Portable Asbestos / Lead Hepa Vacuum (Includes 0.12 micron hepa filter)	\$249.00	\$236.00
700305	5 Gallon Asbestos / Lead Vacuum (Includes 0.12 micron hepa filter)	\$455.00	\$449.00
HEPA FILTERS & ACCESSORY KIT FOR VACUUMS			
700311	Hepa Omega Portable 0.12 micron Filter Only	\$31.95	\$29.00
700313	Hepa Omega 5 Gallon 0.12 micron Filter Only	\$75.50	\$69.00
700315	Omega Vacuum Accessory Kit (Fits Both Styles 700303 & 700305)	\$55.95	\$50.95
	Kit Includes: (2) 20" Straight Wands, (1) 10" Carpet Wand, (1) 10" Horse Hair Floor Brush, (1) 11" Curved Neck, (1) Accessory Caddy		

Hepa Vacuums, Filters & Accessories

V8000WD

WET/DRY HEPA VACUUM

**For Construction & Renovation, Restoration,
Mold Remediation & Healthcare**



700343

The V8000WD is a versatile HEPA vacuum that features superior suction performance, a low-profile design, low noise level, highest quality components and materials, and all the power you need to do a better cleaning job, with less effort and in a shorter time. Removes dust, dirt and non-flammable liquids.

This unit is rated at 1.6 HP, 120 CFM air flow and a vacuum waterlift of 90 inches. It features a 99.97% efficient @ 0.3 microns HEPA filter, making it ideal for applications wherever HEPA filtration is required to eliminate airborne contaminants and/or to comply with applicable regulations. **Furnished with combination floor nozzle, crevice tool, universal nozzle, HEPA filter and paper filter bag.**

PROJECT APPLICATIONS

- Construction & Renovation
- Mold Remediation
- Healthcare
- Cleaning & Restoration

FEATURES

- Stable, Low-Profile Design
- Powerful Operation
- ETL Tested & Certified for Safe Electrical Operation
- Individually Tested & Certified 99.97% HEPA
- Slim & Easy to Transport
- Easy-Emptying Tank
- Low Noise Level
- Quality Components Throughout
- Chrome Wand & Extension
- One Year Limited Warranty

TECHNICAL DATA

Power:	1.6 HP
Peak Power:	7.25 HP
Air Flow:	120 CFM
Waterlift:	90" w.g.
Noise Level:	59 db(A)
Tank Volume:	8 gallons
LxWxH:	15" x 15" x 22"
Weight:	22 lbs
Hose (dia & len):	1.5" x 10'

PART #	PRODUCT DESCRIPTION	LIST PRICE	ems PRICE
HEPA VACUUM			
700343	Wet/Dry HEPA Vacuum. Includes floor nozzle, crevice tool, universal nozzle, HEPA filter and paper filter bag.	\$595.00	\$595.00
700344	Paper Filter Bags with Sliding Containment Lock (5/case)	\$39.00	\$39.00
700345	HEPA Filter (1ea)	\$160.00	\$160.00
700346	18" Industrial Metal Floor Nozzle (1ea)	\$72.00	\$72.00
700347	18" Industrial Metal Squeegee (1ea)	\$72.00	\$72.00

Respirators, Filters & Accessories

NORTH CA102 Compact Air PAPR

The North Compact Air™ PAPR is a belt mounted PAPR designed to provide respiratory protection from gases, vapors and particulates depending on the air purifying elements used. This PAPR is NIOSH approved for use with North 5500, 7700, 5400 and 7600 Series tight fitting facepieces. If you have an existing North 1/2 face or full face respirator you can convert it to a full featured PAPR.



110132

DRAEGER Piccola Mask N95 with Exhalation Valve

Filtering face pieces approved according to the protective level N95 - offer a filtration efficiency of 95% particles down to 0.3 microns. The Piccola N95 is available with exhalation valve for improved breathing comfort. Each mask is individually and hygienically packaged with 20 pieces in one dispenser box.



110100

NORTH 7700 Series Half Mask



110105

Air-Purifying Respirators (NIOSH Certified)

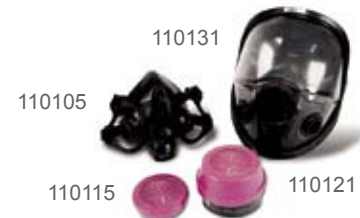
The North 7700 Series is the best selling and most comfortable half mask respirator available today. What makes it so comfortable? For one thing, the facepiece is made of soft, hypoallergenic silicone. Because silicone is so much more flexible than organic rubber, it conforms to a worker's face. And three facepiece sizes make it much easier to fit your workers.

The North 7700's cradle suspension system also adds to the comfort of this respirator. The North 7700 doesn't slip like respirators with conventional strap systems. The cradle suspension gives an even seal without creating pressure points.

The low profile of the North 7700 gives workers a wide field of vision and room for protective eyewear. Its low inhalation and exhalation resistance makes breathing easier, leaving more energy for production.

PART #	PRODUCT DESCRIPTION	LIST PRICE	ems PRICE
DRAEGER MASK			
110100	Draeger Piccola N95 Mask with exhale valve (20 per box)	\$32.95	\$29.95
NORTH RESPIRATORS & ACCESSORIES			
110101	North 1/2 Face Respirator Size Medium (7700-30M) FILTERS NOT INCLUDED	\$19.95	\$17.50
110105	North 1/2 Face Respirator Size Large (7700-30L) FILTERS NOT INCLUDED	\$19.95	\$17.50
110109	North 1/2 Face Respirator Size Small (7700-30S) FILTERS NOT INCLUDED	\$19.95	\$17.50
110111	North 1/2 Face Inhale Valve (6 Per Pack)	\$9.95	\$9.95
110113	North 1/2 Face Exhale Valve (4 Pack)	\$10.95	\$10.95
110115	North HEPA Filters 2/pk. (Magenta)	\$7.50	\$5.99
110121	North OV/AG Organic Filters 2/pk. (Magenta & Yellow)	\$16.95	\$15.50
110123	North OV/P100 2/pk. (Magenta & Black)	\$15.95	\$14.95
110125	Polyken Respirator Wipes 100/pk.	\$20.95	\$19.95
110130	North 7600 Full Face Respirator Size Small	\$179.00	\$169.00
110131	North 7600 Full Face Respirator Size Medium/Large	\$179.00	\$169.00
110132	North CA102 PAPR	\$799.00	\$679.00
110133	North CA102 Hepa Filters (Case / 12 filters)	\$209.00	\$197.50

NORTH 7600 Series Respirators



110131

110105

110115

110121

The North 7600 Series full facepiece respirators are designed to provide eye, face and respiratory protection while providing optimum comfort. While affording an over 200° field of vision, the hard coated polycarbonate lens protects the wearer's eyes and face against irritating gases, vapors and flying particles. The polycarbonate lens also features optical properties similar to the Norton180® Protective Spectacle to minimize distortion and astigmatism.

Respirators, Filters & Accessories

3M RACAL P.A.P.R.

- NIOSH/MSHA approved
- Meets impact and penetration requirements of ANSI Z87.1-1989 (Eye & Face Protection)
- Positive Pressure, Constant Flow
- Mask-mounted Motor/Airflow Unit
- Minimum 4 cubic feet (115 liters) air/minute
- Lightweight, compact, mobile
- Rechargeable Nickel Cadmium Battery Pack
- Delivers up to 8 hours of continuous battery use
- Easily decontaminated



VeriFit Irritant Smoke Kit for Respirator Fit Testing

600176



Patented all-in-one design is convenient and complete; no components to lose. Its small integrated bellows pump provides the optimum amount of smoke for fit testing yet minimizes the risk of over-exposure. The plastic smoke generator eliminates danger from exposed broken glass for safer operation and disposal. Respirator fit testing is accomplished in three simple steps with VeriFit Irritant Smoke Generators: (1) Bend the smoke generator to break the enclosed ampoule. (2) Remove cap. (3) Wait 5 seconds and compress bellows

Draeger

Air Current Tube Kit



600172

PART #	PRODUCT DESCRIPTION	LIST PRICE	ems PRICE
RACAL P.A.P.R. & ACCESSORIES			
110201	Racal P.A.P.R. Power Flow Complete (HEPA Filter, Battery & Charger Included)	\$395.00	\$369.00
110205	Racal P.A.P.R. Battery Charger	\$69.99	\$59.99
110210	Racal Battery Pack P.A.P.R.	\$219.00	\$199.00
110215	Racal SP-3 P.A.P.R. Filters	\$12.95	\$12.95
SMOKE & FIT TEST TUBES & KITS			
600183	Sensidyne Brand - Manual Smoke Tube Kit (10 Tubes) (Irritant Smoke)	\$69.00	\$65.00
600185	Sensidyne Brand - Smoke Tester Tubes (10 Tubes) (Irritant Smoke)	\$39.00	\$35.00
600176	VeriFit Irritant Smoke Kit for Respirator Fit Testing (10 Tubes) (Irritant Smoke)	\$25.00	\$25.00
600171	Draeger Air Current Tubes (10 Tubes) (Non-Irritant Smoke)	\$59.00	\$55.00
600172	Draeger Air Current Tube Kit (10 Tubes) (Non-Irritant Smoke)	\$99.50	\$99.50

Protective Apparel & Accessories



Tyvek® offers a [one-of-a-kind, inherent](#) barrier that won't rip, abrade or puncture as easily as the barrier in laminates. Specially created by DuPont® scientists and backed by DuPont® technology, Tyvek® holds out 97% of asbestos, 99% of bacteria and 98% of ambient particles. Particles less than 5 microns in size are no match for Tyvek®. Tyvek® garments provide protection from nuisance dry particulates, such as dirt and dust, to hazardous particles and fibers, such as lead paint and asbestos.



110520



PART #	PRODUCT DESCRIPTION	LIST PRICE	ems PRICE
PROTECTIVE CLOTHING & ACCESSORIES			
110515-S	Tyvek® Coverall Zipper Front, Hood, Boots, Elastic Wrist & Ankles (25 ea.)(S)	\$135.00	\$127.95
110515-M	Tyvek® Coverall Zipper Front, Hood, Boots, Elastic Wrist & Ankles (25 ea.)(M)	\$135.00	\$127.95
110515-L	Tyvek® Coverall Zipper Front, Hood, Boots, Elastic Wrist & Ankles (25 ea.)(L)	\$135.00	\$127.95
110515-XL	Tyvek® Coverall Zipper Front, Hood, Boots, Elastic Wrist & Ankles (25 ea.)(XL)	\$135.00	\$127.95
110517	Tyvek® Coverall Zipper Front, Hood, Boots, Elastic Wrist & Ankles (25 ea.)(2X)	\$142.95	\$135.95
110519	Tyvek® Coverall Zipper Front, Hood, Boots, Elastic Wrist & Ankles (25 ea.)(3X)	\$152.95	\$145.95
110520	Dansafe Booties, PE Coated Polypropylene (200pr) White, Elastic	\$44.50	\$39.95
700110-L	Nitrile Gloves, Non-Latex, Powder free, (100/pk) Large	\$12.95	\$8.95
700110-XL	Nitrile Gloves, Non-Latex, Powder free, (100/pk) X-Large	\$12.95	\$8.95
110516-L	ems Basic Coverall, Hood, Boots, Elastic Wrist & Ankles (25 ea.)(LG)	\$49.95	\$40.00
110516-XL	ems Basic Coverall, Hood, Boots, Elastic Wrist & Ankles (25 ea.)(XL)	\$49.95	\$40.00
110516-2X	ems Basic Coverall, Hood, Boots, Elastic Wrist & Ankles (25 ea.)(2X)	\$49.95	\$40.00
110516-3X	ems Basic Coverall, Hood, Boots, Elastic Wrist & Ankles (25 ea.)(3X)	\$49.95	\$40.00

ems Basic Coveralls

The ems BASIC COVERALL provides an economical cost alternative to traditional coveralls. Zipper front, 1.25 ounce Polypropylene Coveralls (Includes attached hood, booties, and elastic wrist & ankles.) 25ea per Box. Dirt, grime and dust are no match for these coveralls made from lightweight polypropylene. The soft material offers superb airflow to keep workers cool.