



# IMPACT®

Do it All with the Everex IMPACT® GC2500. With Windows® XP Home Edition running on the latest VIA® C7 processor, the GC2500 lets you create your own CDs and DVDs, surf the Internet, transfer digital music and photos or email friends and family, all on a 17" Monitor.  
IMPACT: Redefining Value.



**Model  
GC2500**

■ **1.5GHz  
VIA®C7  
Processor**

■ **Microsoft®  
Windows®XP  
Home Edition**

■ **512MB DDR  
Memory**

■ **DVD+/-RW  
Dual Drive**

## User Manual

\*Covers Models GC2000, GC2500, GC2800, GC3000

# IMPACT

## ***User Manual***

## ***Copyright***

**Copyright © 2006** Everex Systems Inc. All rights reserved.

- ◆ Disclaimer: Everex Systems Inc. shall not be liable for technical or editorial errors or omissions contained herein; or for incidental or consequential damages resulting from furnishing this material, or the performance or use of this product.
- ◆ FIC Inc. reserves the right to change product specification without prior notice; therefore, information in this document may change without notice.
- ◆ No part of this document may be copied, reproduced, or transmitted by any means or for any purpose without prior written permission from FIC Incorporated.

## ***Safety Instructions***

This computer has been tested for conformance to international safety regulations. Like any electronic device, however, the computer should be used with care. To protect yourself from possible injury and to minimize the risk of damage to the computer, read and follow all the safety instructions mentioned in this manual.

- ◆ Read all of these instructions.
- ◆ Save these instructions for future use.

**WARNING:** Do not attempt to service the computer yourself. Opening or removing covers might expose you to dangerous voltage points or other risk, have a qualified person repair it.

**WARNING:** Keep hair, loose clothing, fingers, and all parts of body away from openings, moving parts and fan

**WARNING:** Do not operate the computer with the cover removed.

**WARNING:** Always disconnect all telephone lines & all power cords from the wall outlet before servicing or disassembling this product. To reduce the risk of personal injury from electrical shock or hot surfaces, disconnect the power cord from the wall outlet, and allow the internal system components to cool before touching.

**WARNING:** This equipment is designed for connection to a grounded (earthed) outlet. The grounded type plug is an important safety feature. To reduce the



## IMPACT PC USER'S MANUAL

risk of electrical shock, damage to your equipment, or loss of data, do not disable this feature.

### ***Installation Restrictions***

1. Unplug this product from the wall outlet before cleaning. Do not use liquid cleaners or aerosol cleaners. Use a damp cloth for cleaning. Ensure that no liquid enters the system.
2. Do not use this product near water, in a wet basement or near a swimming pool.
3. Do not connect or disconnect cables during a thunderstorm.
4. Slots and openings in the cabinet and the back or bottom are provided for ventilation; to ensure reliable operation of the product and to protect it from overheating, these openings must not be blocked or covered. The product should never be placed near or over a radiator or heat register, or in a built-in installation unless proper ventilation is provided.
5. This product should be operated from the type of power indicated on the marking label. If you are not sure of the type of power available, consult your dealer or local power company.
6. Do not allow anything to rest on the power cord. Do not locate this product where persons will tread on the cord.
7. If an extension cord is used with this product, make sure that the total ampere rating of the equipment plugged into the extension cord does not exceed the extension cord ampere rating. Also, make sure that the total rating of all products plugged into the wall outlet does not exceed the fuse rating.
8. Never push objects of any kind into this product through cabinet slots as they may touch dangerous voltage points or short out parts that could result in a fire or electronic shock. Never spill liquid of any kind on the product.
9. If this product was not provided with a telephone line cord, use only No.26 AWG or larger telecommunication line cord in order to reduce the risk of fire.
10. Refer your system for servicing to qualified service personnel under the following conditions:
  - When the power cord or plug is damaged or frayed.
  - If liquid has been spilled into the product.
  - If the product has been exposed to rain or water.
  - If the product does not operate normally when the operating instructions are followed. Adjust only those controls that are covered by the operating instructions, since improper adjustment of other controls may result in damage and will often require extensive work by a qualified technician to restore the product to normal condition.
  - If the product has been dropped or the cabinet has been damaged.

## COPYRIGHT & SAFETY STATEMENT

- If the product displays a distinct change in performance, it indicates a need for service.

### **Power Cord Set Requirements**

- The power cord set (appliance coupler, flexible cord, and wall plug) you received with the computer meets the requirements for use in the country where you purchased the equipment.
- Power cord sets for use in other countries must meet the requirements of the country where you use the computer. For more information on power cord set requirement, contact your local authorized dealer, reseller, or service provider.

### **Laser Compliance Statement**

The CD-ROM / DVD-ROM / CD-RW / DVD-RW drive in this computer is a laser product. The CD-ROM / DVD-ROM / CD-RW / DVD-RW drive's classification label (shown below) is location on the drive.

#### **CLASS 1 LASER PRODUCT**

Caution: Use to any controls or adjustments or procedures other than those specified herein may result in hazardous radiate exposure. To prevent exposure to laser emanations (Harmful to Human eyes), Do not attempt to disassemble this unit.

### **Battery (Lithium)**

**NOTE: The following caution statement is located in the service and operating manual or on the label adjacent to the battery.**

#### **1. English**

CAUTION: DANGER OF EXPLOSION IF BATTERY IS INCORRECTLY REPLACED. REPLACE ONLY WITH SAME OR EQUIVALENT TYPE RECOMMENDED BY THE MANUFACTURER. DISCARD USED BATTERIES ACCORDING TO THE MANUFACTURER'S INSTRUCTIONS.

#### **2. French**

IL Y A DANGER D'EXPLOSION S'IL Y A REMPLACEMENT INCORRECT DE LA BATTERIE. REMPLACER UNIQUEMENT AVEC UNE BATTERIE DU MÊME TYPE OU D'UN TYPE RECOMMANDÉ PAR LE CONSTRUCTEUR. METTER AU RÉBUT LES BATTERIES USAGÉES CONFORMÉMENT AUX INSTRUCTIONS DU FABRICANT.

#### **3. German**

VORSICHT ! Explosionsgefahr bei unsachgemäßen Austausch der Batterie. Ersatz nur durch denselben oder einem vom Hersteller empfohlenem ähnlichen Typ.

V



## IMPACT PC USER'S MANUAL

Entsorgung gebrauchter Batterien nach Angaben des Herstellers.

### 4. Swedish

Explosionsfara vid felaktigt batteribyte.  
Använd samma batterityp eller en ekvivalent typ som rekommenderas av apparatillverkaren. Kassera använt batteri enligt fabrikantens instruktion.

### 5. Danish

Lithiumbatteri- Eksplosionsfare ved fejlagtig håndtering.  
Udskiftning må kun ske med batteri af samme fabrikat og type.  
Lever det brugte batteri tilbage til leverandoren.

### 6. Norwegian

Eksplosjonsfare ved feilaktig skifte av batteri.  
Benytt samme batteritype eller en tilsvarende type anbefalt av apparatfabrikanten.  
Brukte batterier kasseres i henhold til fabrikantens instruksjoner.

### 7. Finnish

Paristo voi räjähtää, jos se on virheellisesti asennettu.  
Vaihda paristo ainostaan laitevalmistajan suosittelemaan tyyppiin.  
Hävitä käyteet paristo valmistajan ohjeiden mukaisesti.

## FCC Information

This equipment has been tested and found to comply with the limits for a Class B digital device, pursuant to part 15 of FCC Regulations. These limits are designed to provide reasonable protection against harmful interference in a residential installation. This equipment generates, uses, and can radiate radio frequency energy, and if not installed and used in accordance with the instructions, may cause harmful interference to radio communications. However, there is no guarantee that interference will not occur in a particular installation. If this equipment does cause harmful interference to radio or television reception, which can be determined by turning the equipment off and on, the user is encouraged to try to correct the interference by one or more of the following measures:

- Reorient or relocate the receiving antenna.
- Increase the separation between the equipment and receiver.
- Connect the equipment into an outlet on a circuit different from that to which the receiver is connected.
- Consult the dealer or an experienced radio/TV technician for help.

## ***Laser Safety Requirement***

### ***Laser Drive (CD-ROM, CD-RW, DVD) Safety Warnings***

#### **CLASS 1 LASER PRODUCT**

- CAUTION: INVISIBLE LASER RADIATION WHEN OPEN. DO NOT STARE INTO BEAM.
- CAUTION: USE OF ANY CONTROLS OR ADJUSTMENTS OR PROCEDURES OTHER THAN THOSE SPECIFIED HEREIN MAY RESULT IN HAZARDOUS RADIATION EXPOSURE. TO PREVENT EXPOSURE TO LASER EMISSIONS (HARMFUL TO HUMAN EYES), DO NOT ATTEMPT TO DISASSEMBLE THIS UNIT.

## **Television antenna connectors protection (for system TV tuner card)**

### ***External television antenna grounding***

If an outside antenna or cable system is to be connected to the product, make sure that the antenna or cable system is electrically grounded to provide some protection against voltage surges and static charges.

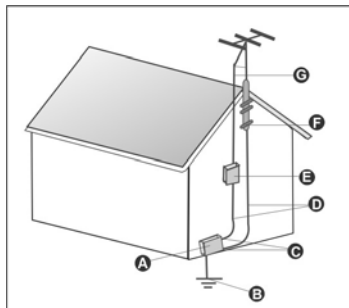
Article 810 of the National Electrical Code. ANSI/NFPA 70, provide information with regard to proper grounding of the mast and supporting structure, grounding of the lead-in wire to an antenna discharge unit, size of grounding conductors, location of antenna discharge unit, connection to grounding electrodes, and requirements for the grounding electrode.

### ***Lightning protection***

For added protection of any product during a lightning storm or when it is left unattended or unused for long periods of time, unplug the product from the wall outlet and disconnect the antenna or cable system.

**WARNING:** Må Kun tilkoples kabel-TV nett via galvanisk isolator.

## IMPACT PC USER'S MANUAL



	Grounding Component
A	Electric Service Equipment
B	Power Service Grounding Electrode System (NEC Art 250, Part H)
C	Ground Clamps
D	Grounding Conductors (NEC Section 810-21)
E	Antenna Discharge Unit (NEC Section 810-20)
F	Ground Clamp
G	Antenna lead-in wire

Antenna grounding

### **CATV Cable Safety**

Make sure that your CATV system installer has connected the Coaxial cable shield to the grounding system of the building, as close to the point of cable entry as practical.

### **TV Antenna**

The TV antenna supplied with any TV Tuner module is intended for Indoor use only. Please do not use your TV Tuner module outdoors.

### **Power Lines**

Do not locate the antenna near overhead light or power circuits, or where it could fall into such power or circuits.

**WARNING:** When installing or realigning an outside antenna system, extreme care should be taken to keep from touching such power lines or circuits. Contact with them could be fatal.



# Contents

<b>Chapter 1</b>	<b>1</b>
<b>Welcome to IMPACT PC!</b>	<b>1</b>
Placement Tips.....	2
<b>Chapter 2</b>	<b>3</b>
<b>Unpacking the Box</b>	<b>3</b>
Selecting a Site .....	3
Check List.....	3
<b>Chapter 3</b>	<b>4</b>
<b>System Overview</b>	<b>4</b>
Front Panel.....	4
Rear Panel .....	6
<b>Chapter 4</b>	<b>8</b>
<b>Computer Setup</b>	<b>8</b>
Setting up the AC Input voltage selection .....	8
Connect the Power Cord .....	9
Connecting your PS/2 mouse and PS/2 keyboard.....	9
Connecting your monitor .....	10
Connecting the modem .....	10
Connecting the Ethernet.....	11
Connecting Your Printer.....	11
<b>System Recovery</b>	<b>12</b>
<b>Appendix</b>	<b>17</b>
<b>System Specifications</b>	<b>17</b>
Product Features.....	17
Technical Support .....	19



## Chapter 1

# Welcome to IMPACT PC!

### Congratulations on your purchase of IMPACT PC!

You will find that the IMPACT PC has the following advantages:

- **Efficient Cooling:** The IMPACT's efficient cooling system and heat vents provide for better airflow, allowing the system to maintain a low temperature.
- **State-of-the-art Design:** The unique design of the IMPACT PC combines state-of-the-art electronics with a sophisticated, standard form factor that provides you with a personal computer, which is both fast and powerful.
- **The Perfect System:** Whether gaming at home or making presentations at the office, the IMPACT is the perfect system for all of your computing needs.

Please read this USER MANUAL carefully before unpacking and setting up your IMPACT PC. You can use this USER MANUAL as a comprehensive library for your IMPACT PC. Please refer to this USER MANUAL first if you encounter any problems. Please keep this booklet on hand and enjoy your IMPACT PC experience.



**Note:**

In order to set up the IMPACT PC efficiently, the BIOS setup menu has been modified slightly. Please refer to the system's BIOS setup menu on the screen.

## Placement Tips

Your IMPACT PC should be set up correctly according to this user manual, and your own comfort and ergonomic needs. Please refer to the following tips to create a comfortable and healthy working environment for you:

1. **Adjustable Seat:** If you plan to use your IMPACT PC for extended periods, select a highly adjustable office chair with a five-pronged base. The seat and chair back should be adjustable, while you're sitting in the chair, for height and tilt, and forward/backward positioning. In addition, the lumbar area of your back should be supported by chair adjustments or a cushion. Arm rests should conform to your elbow height and shoulder width and should be used for support. For maximum comfort, vary positions frequently throughout the day, observe good posture when seated, and keep your head centered over your shoulders.
2. **Suitable monitor level:** Position your computer so that it is at arm's length away and the top third of the monitor viewing area is at eye level. This helps prevent eye and neck strain. To further reduce eye strain, close your eyes and/or refocus on something other than your computer screen at least twice an hour. Most monitors come standard with a detachable tilt-and-swivel base and an adjustable, rear-mounted foot, which will allow you to position the monitor exactly where you want it.
3. **Anti-glare coating:** Some monitor screens are constructed with a special anti-glare coating, which minimizes reflections that cause eyestrain and discomfort. To further reduce eyestrain, close your eyes and/or refocus on something other than your computer screen at least twice an hour.
4. **Adjustable task lighting:** When room lighting is dimmed, there may be insufficient light on documents or reference materials for comfortable reading. A well-lit room or a few adjustable, directional task lights will allow you to see your monitor screen and other materials clearly, causing the least amount of strain on your eyes.
5. **Appropriate position for wrist rest:** Keep your wrists straight and your forearms parallel to the floor while you are typing. If you use a wrist rest, use it only briefly while resting. Do not rest your hands on the table or on the wrist rest as you are typing. During long periods of typing, taking frequent breaks is recommended.

## Chapter 2

---

# Unpacking the Box

### Selecting a Site

Before unpacking the IMPACT PC, prepare a suitable workspace for your computer. Choose a steady, level and clean surface near an electrical outlet. Also ensure that the computer has enough space around it to allow for proper airflow, especially at the rear of the computer near the fan. If the computer does not have enough ventilation, internal components can become overheated and may become damaged.

When opening the box, make sure not to damage it or the packing material, as you may need them for future shipping needs.

As you unpack the box, make sure the following components are included in the box and are in good condition. If you find that any of these components are missing or appear damaged, please contact the system dealer immediately.

### Check List

- |   |  |
|---|--|
| <input checked="" type="checkbox"/> IMPACT PC System Unit | <input checked="" type="checkbox"/> Keyboard |
| <input checked="" type="checkbox"/> AC Power Cord         | <input checked="" type="checkbox"/> Mouse    |
| <input checked="" type="checkbox"/> Speaker               | <input checked="" type="checkbox"/> Tel line |
| <input type="checkbox"/> User Manual                      | <input checked="" type="checkbox"/> Monitor  |
| <input checked="" type="checkbox"/> Quick Start Guide     |  |

## Chapter 3

# System Overview

### Front Panel

Features are shown in Figure 3.1, and are described as follows:

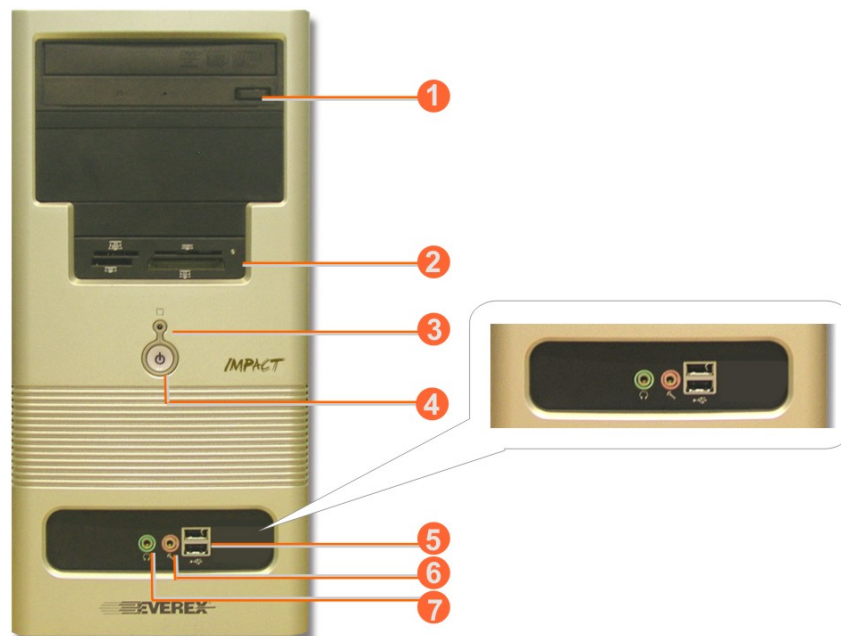


Figure 3.1



**Note:**

*Depending on the model, your computer's components may vary and look slightly different than those pictured.*

- 1. Optical Disc Drive Eject Button:**  
Press this button to eject a 5.25-inch optical disc.

2. **Card Reader:**  
Insert memory cards into these slots.
3. **Hard Disk Drive LED:**  
This LED lights up to indicate that the hard drive is being accessed.
4. **Power Button & Power Indicator:**  
Use this button to turn the IMPACT PC on and off. If the button is held down for one second, the system will enter Suspend mode. If held down for four seconds, system power will switch off. When lit, the Power indicator shows blue to indicate that system power is on.
5. **USB Port (2):**  
Up to two USB devices can be connected via these ports; there are four additional ports at the rear – see below.
6. **Microphone-In Jack (pink):**  
Plug the microphone into this jack for recording or voice-control functions.
7. **Speaker Jack (light green):**  
Connect audio devices, such as headphones or speakers, to this jack

## Rear Panel

Features are shown in Figure 3.2, and are described as follows:

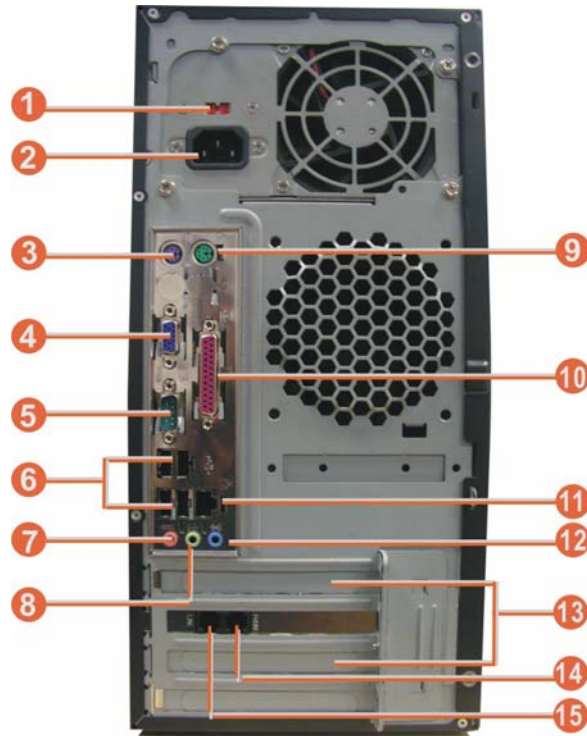


Figure 3.2

- 1. Power Socket Voltage Toggle Switch:**  
This toggle switch allows you to select the system voltage (115 / 230 V) appropriate to your area.
- 2. Power Socket:**  
This toggle switch allows you to select the system voltage (115 / 230 V) appropriate to your area. Connect the system unit's power cord to this socket; ensure that it is connected to a stable AC power source.



**CAUTION:**

Before you plug in the AC power cord, you must first check to ensure the voltage toggle switch setting is appropriate for your geographical area.



3. **PS/2 Keyboard Connector (purple):**  
Plug your PS/2 keyboard into this connector.
4. **COM1 Port (turquoise):**  
Connect serial (RS232) devices, such as a modem, to this port.
5. **VGA Port:**  
Connect your display monitor to this port.
6. **USB Port (4):**  
Connect USB peripheral devices to these ports to take advantage of the universal functionality and flexibility of Plug and Play (PnP) technology.
7. **Microphone-In Jack (pink):**  
Plug the microphone into this jack for recording or voice-control functions.
8. **Line-Out Jack (light green):**  
Connect audio devices such as headphones or speakers to this jack.
9. **PS/2 Mouse Connector:**  
Plug your PS/2 mouse into this connector.
10. **Parallel Port (purple):**  
Parallel devices, such as a printer or scanner, can be connected to this port.
11. **RJ45 LAN Connector (1):**  
For connecting your LAN, allowing you to access network services or the Internet.
12. **Line-In Jack (light blue):**  
Connect audio sources, such as external CD, players to this jack for recording on your computer or playback through the Line-Out device.
13. **Expansion Slot Covers:**  
These covers can be removed to install add-on cards, as described later.
14. **Phone Port**  
Connect to Telephone
15. **Line port**  
Connect to Central office line

## Chapter 4

# Computer Setup

IMPACT is easy to be set up. After remove the IMPACT from shipping box, please follow the steps below to finish its setup.

### Setting up the AC Input voltage selection

The AC Input Voltage Selection can be found at the back of your computer. There are two settings (115V or 230V) for the system to operate. Please set the AC input voltage to 115V (The default is 115V.)

**Warning:**

1. Please must turn off your computer before setting up your computer.
2. Do not remove the protective label to change AC Input Voltage, or it will damage your computer seriously.

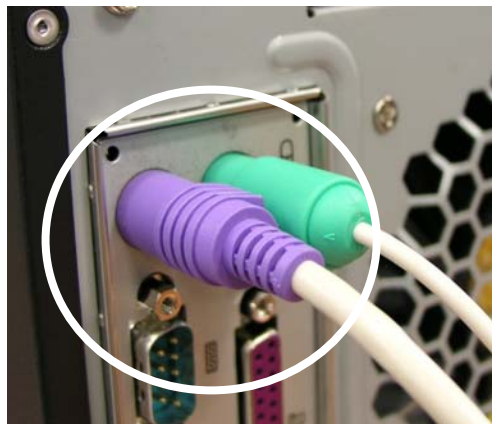
## Connect the Power Cord

Connect the power cable to the computer and then plug into a power supply.



## Connecting your PS/2 mouse and PS/2 keyboard

PS/2 Mouse and P/S2 keyboard can be found at the back of your computer. They can be identified by their colors. Plug the mouse and keyboard to their respective ports.



## Connecting your monitor

Monitor port can be found at the back of your computer. It can be identified easily by color of navy blue.



## Connecting the modem

Connect your phone line in and your JR11 cable out to the wall jack.



## Connecting the Ethernet

Connect the RJ45 cable to the LAN port to get access to internet.



## Connecting Your Printer

Connect the printer cable to the printer port at the back of your computer. Please make sure that both printer and computer are turned off.



## System Recovery

Here there are 2 terms defined:

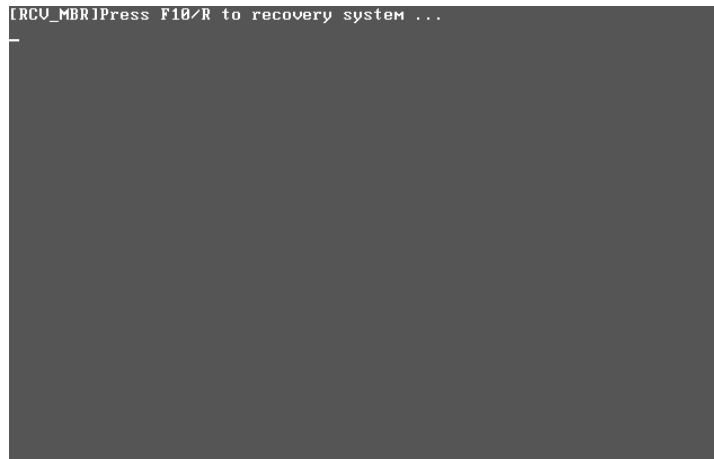
### Recovery Partition

– shortened as R-P in later paragraphs, the R-P is preinstalled by the manufacturer on hard disk for user to restore his/her system in case system crashes later! R-P is hidden!

### User Partition

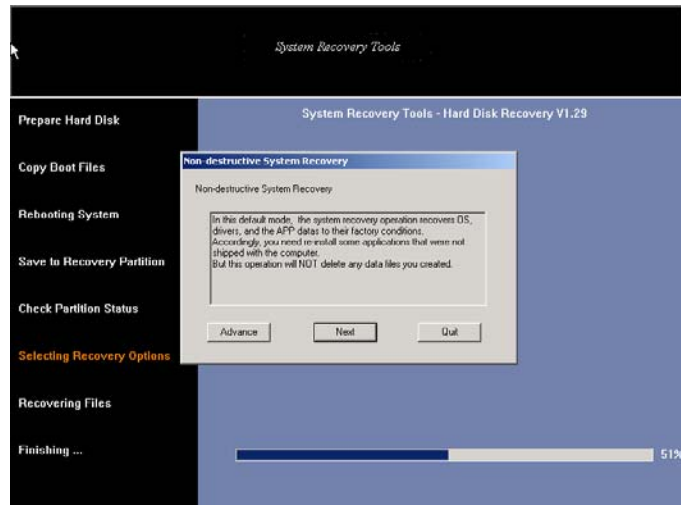
- shortened as U-P in later paragraphs, the U-P stores the user data added later after end user gets the system!

When system boots, user will see the following message:

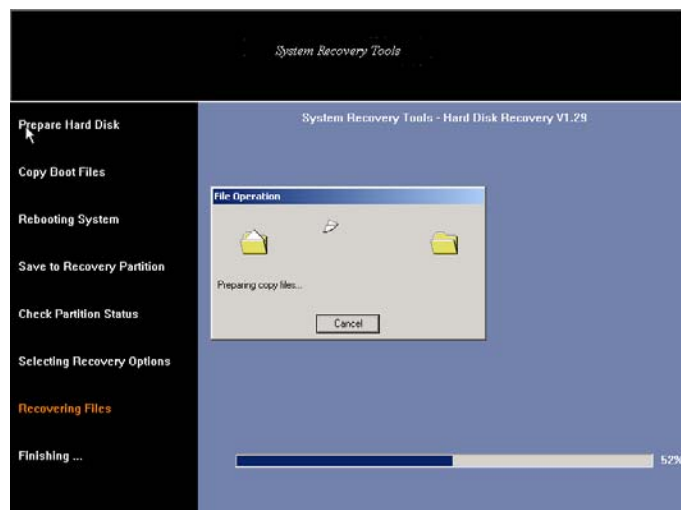


If the user presses 'F10' or 'R'(hot keys), the local recovery begins....What the user should be aware of is the 'Selecting Recovery Options'. The following dialog will appear:

## SYSTEM RECOVERY

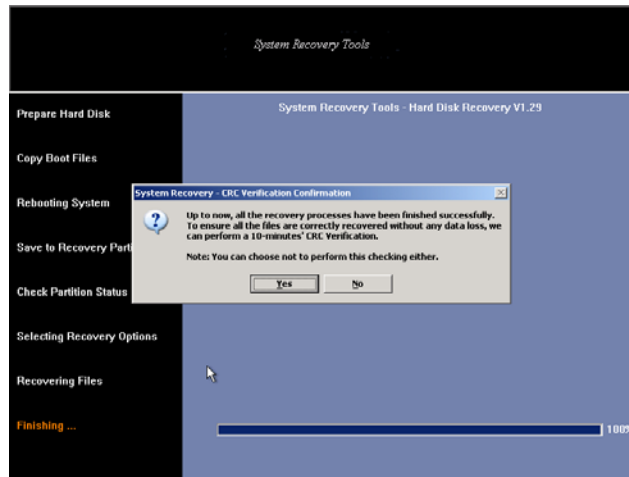


The default mode is non-destructive, in this mode, the data in U-P stays intact, if the user clicks 'Next', the non-destructive recovery will take place, see the following picture:

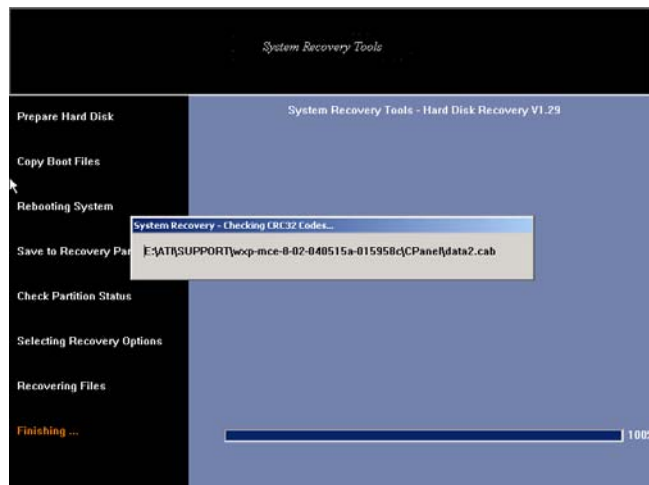


And after all recovery process have finished, a CRC-check request is prompted, and user can make his/her decision.

## IMPACT PC USER'S MANUAL



If user clicks 'Yes', the CRC verification process will be running:

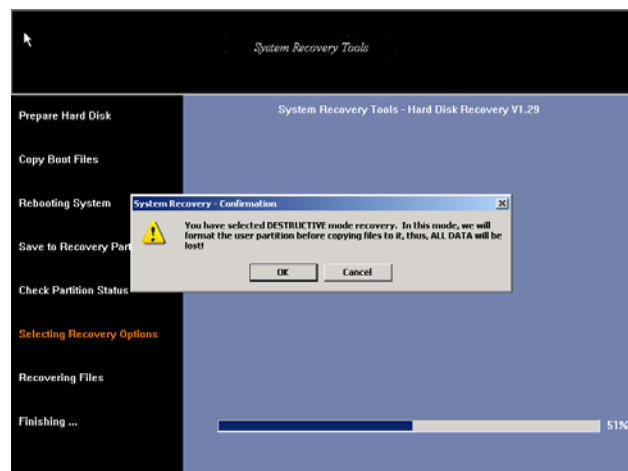
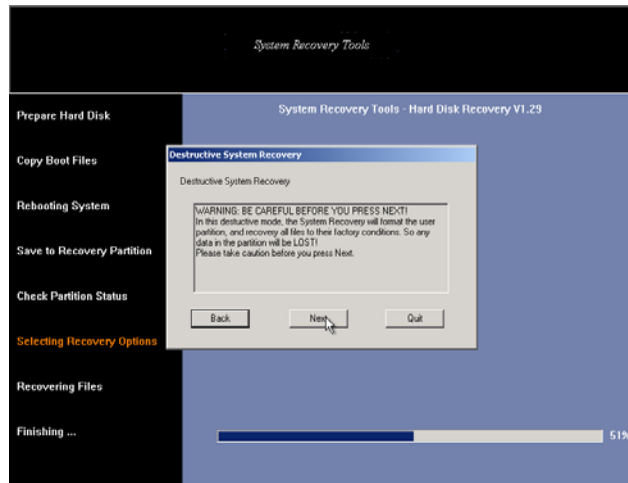


After it is done, the system reboots!

However if the user chooses 'Advance' in the dialog in 'Selecting Recovery Options', that means destructive mode, both the U-P will be destroyed! So user should choose this option with caution!

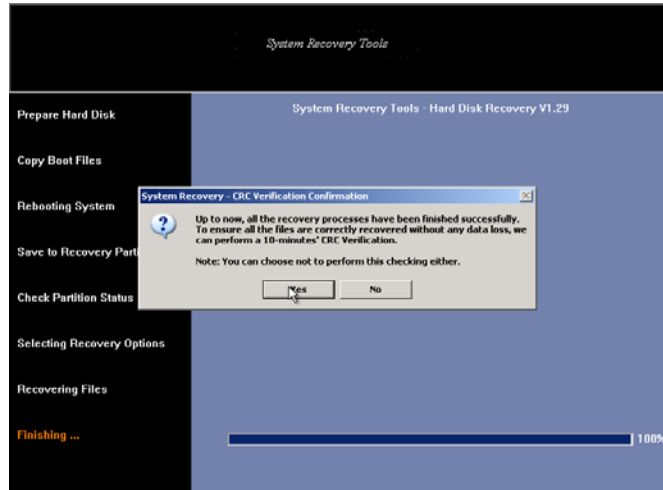


## SYSTEM RECOVERY

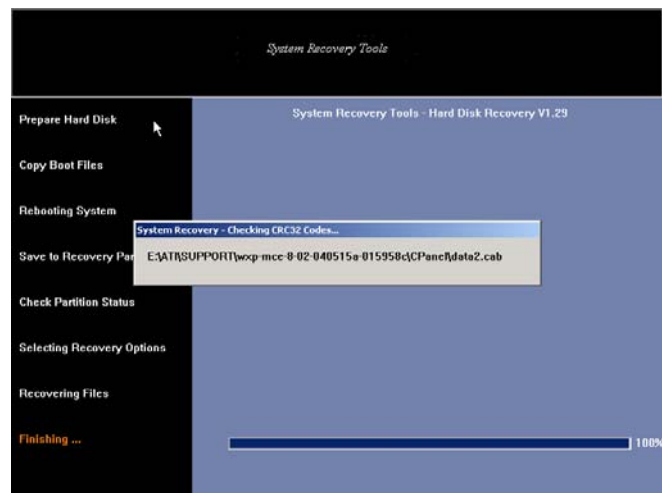


Afterwards, a CRC verification confirmation screen will appear, and user makes his/her choice!

## IMPACT PC USER'S MANUAL



If user clicks 'Yes', the CRC check process is running....



After CRC check is done, system reboots!

## Appendix

# System Specifications

### Product Features

Product Features	
Processor	
	● VIA C7® 1.5GHz Processor
Monitor	
	● 17 Inch CRT Monitor
System memory	
	● DDR2 PC2-4200 512MB x1
Storage	
	● 80G HDD 7200 RPM
Optical disk Drive	
	● DVD Dual
Video	
	● S3 UniChrome™ Pro with Chromotion CE Video Display Engine
Audio	
	● Audio codec: 5.1 channel - Realtek ACL653
Card Reader	
	● 8-in-1 Card Reader
I/O Ports	
	<b>Front Panel</b> <ul style="list-style-type: none"><li>● USB2.0 x2</li><li>● Headphone Line-out x1</li><li>● Microphone Line-in x1</li><li>● LED Indicators:</li></ul>

Product Features	
	Power-On/Off & Suspend activity indicator HDD activity indicator  <b>Rear Side</b> <ul style="list-style-type: none"> <li>● USB2.0 x4</li> <li>● PS/2 Keyboard &amp; PS/2 Mouse</li> <li>● VGA Port</li> <li>● Parallel Port</li> <li>● Serial Port</li> <li>● 10/100Base-TX Fast Ethernet LAN port</li> <li>● 56K data/fax Modem port</li> <li>● AC power connector (AC-In) x 1</li> </ul>
<b>Drive Bays</b>	
	<ul style="list-style-type: none"> <li>● 5.25-inch standard optical drive x 2</li> </ul>
<b>Expansion Card</b>	
	<ul style="list-style-type: none"> <li>● 2 x PCI slots</li> </ul>
<b>Operating System</b>	
	<ul style="list-style-type: none"> <li>● Microsoft® Window XP Home Edition</li> </ul>
<b>Software - preinstalled</b>	
	<ul style="list-style-type: none"> <li>● CyberLink PowerDVD 6</li> <li>● CyberLink Power2GO 4</li> <li>● PowerBackup 2.0</li> <li>● PowerDVD Copy 1.0</li> <li>● PowerProducer 3.2 (Trial Version)</li> <li>● Media@Show 3.0 (Trial Version)</li> <li>● Music Match</li> <li>● Windows® Media Player</li> <li>● Windows® WordPad</li> <li>● Norton Internet Security™ 2006</li> </ul>
<b>Warranty</b>	
	<ul style="list-style-type: none"> <li>● 1 years</li> </ul>

## Technical Support

- For the latest Drivers and Support Documents or to chat online with a Live Technician visit **www.everex.com**
- To contact Technical Support via email, send your **User Name**, **Model**, **Serial Number** and a brief **Description** of the issue at hand to techsupport@everex.com
- To register your product visit www.everex.com or simply email your **User Name** (first and last), **Model** (Everex IMPACT GC2500, etc.) and **Serial Number** to customerservice@everex.com. Please use "Product Registration – GAXXXX" as your email subject.
- To speak with an Everex Technical Support Representative call our 24-Hour response team at **1-866-850-8835** (toll-free)

Please complete the following information before contacting Everex Technical Support:

**User Name** : \_\_\_\_\_

**Model** (Everex IMPACT GC2500, etc.): \_\_\_\_\_

**Serial Number** : \_\_\_\_\_

**Problem Description** : \_\_\_\_\_

\_\_\_\_\_

\_\_\_\_\_

**Everex Systems, Inc.**, 440 Mission Court, #250, Fremont CA 94539,

