

Model: DX2000-LCD

DigiSender[®]

Wirefree TV for your home

Plug'n'Go[™] LCD

Single Input 5.8GHz Wireless AV Sender System



Want to transmit to more than 1 room?
You need a DX200-LCDRX Additional Receiver!
Visit: www.aei.eu for details

**WATCH A VIDEO
INSTALLATION
& TROUBLESHOOTING GUIDE**

Available online at: www.aei.eu/video

Contents

Introduction	03
Installing your DigiSender	04 - 06
Step 1 - Unpack your DigiSender®	04
Step 2 - Install the Transmitter	05
Step 3 - Install the Receiver	06
Using your DigiSender	07 - 08
Standard Operation	07
DigiSender® Advanced Functions	08
Troubleshooting	09 - 13
Audio Problems	09
Picture Problems	10 - 11
Remote Relay Problems	12
Technical Support & Accessories	13



For indoor use only. Do not expose the units to moisture as this may lead to faulty operation and risk of electric shock.



Risk of electric shock, do not open. None of the contents of this DigiSender® pack contain user-serviceable parts.

Avoid dripping or splashing liquids on the units and do not place objects filled with liquid on them.

The Transmitter and Receiver rating labels are located on the base of the units.

Introduction

Congratulations on purchasing the DigiSender® Plug'n'Go™ LCD - Single Input 5.8GHz Wireless AV Sender System. This product represents state of the art wireless audio and video technology at exceptional value for money.

You can now enjoy DVD quality video and Hi-Fi stereo sound from your Satellite, Cable, Freeview, DVD or VCR in another room in your home.

The DigiSender® Plug'n'Go™ LCD is a video sender with a difference. Because it uses 5.8GHz to transmit rather than the much more common 2.4GHz, you can use the DigiSender® Plug'n'Go™ LCD without the worry of interference from wireless routers, Bluetooth devices and other wireless products operating on 2.4GHz.

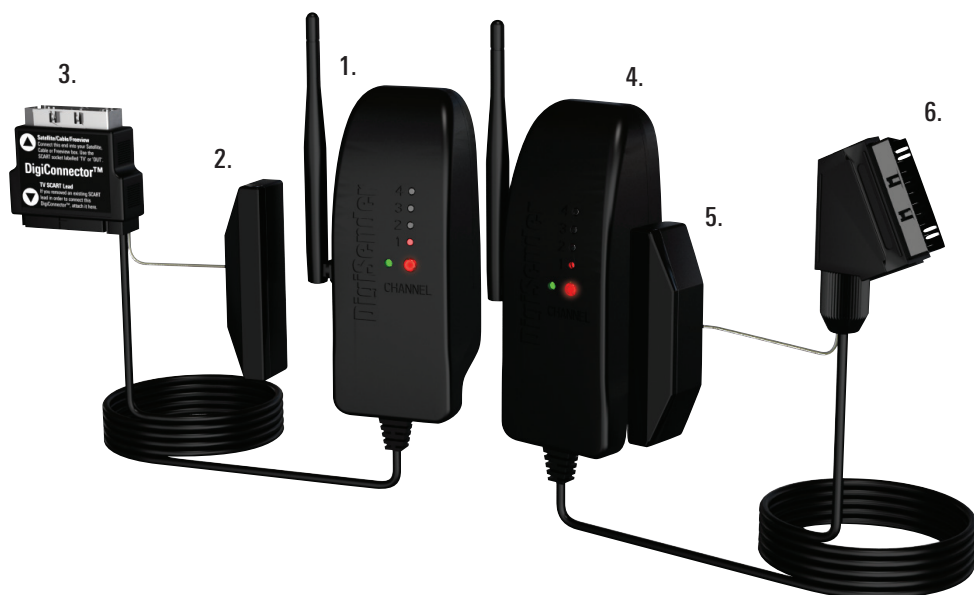
Benefit from 5.8GHz transmission, 1x DigiConnector™ SCART Input, 4x Audio/Video Channels, Remote Relay and a discreet 'plug-style' design with the new DigiSender® Plug'n'Go™ LCD!



Installing your DigiSender®

Step 1 - Unpack your DigiSender®

All DigiSender® orders are computer weight checked when packed. However, it is a good idea to check all kit contents are present before proceeding with the installation.



DX2000-LCD Transmitter

1. Transmitter Unit
2. Pre-wired IR Emitter
3. Pre-wired DigiConnector™ SCART Input

DX2000-LCD Receiver

4. Receiver Unit
5. Pre-wired IR Sensor
6. Pre-wired SCART Output

Installing your DigiSender®

Step 2 - Install the Transmitter

The Transmitter will send the audio and video from a connected source (your Satellite receiver for example) to the Receiver, located in another room in your home.



1. Connect the DigiConnector™ to your Satellite, Cable or Freeview box. Use the SCART socket labelled 'TV' or 'OUT'. Connect any existing SCART lead into the rear of the DigiConnector™.



2. Connect the Transmitter to a mains socket. You might want to consider plugging the Transmitter into a mains extension lead, as being able to move the unit around will help in getting the very best picture.



3. Position the IR Emitter in front of your source device (satellite, cable, freeview, DVD, etc.) with the lens facing the equipments IR Sensor.



4. Press the power button to turn the Transmitter on. Pressing the power again will cycle through the four available A/V channels. Make sure it is set to Channel 1 for the moment.

Installing your DigiSender®

Step 3 - Install the Receiver

The Receiver will pick up the signals being sent by your Transmitter and output them to a connected TV.



1. Locate a vacant SCART socket on the back of your receiving TV and insert the DigiSender® SCART cable.



2. Connect the Receiver to a mains socket. Again, you might want to consider plugging the Receiver into a mains extension lead.



3. Position the IR Sensor on the top, side or bottom of your receiving TV using the supplied sticky pad. Ensure that the lens of the IR Sensor is facing out into the room, approximately pointed towards where you will be using the remote control from.



4. Press the power button to turn the Receiver on. Pressing the power again will cycle through the 4 available A/V channels. Make sure it is set to Channel 1 for the moment.

Using your DigiSender® Standard Operation

The steps below should be followed every time you use the DigiSender®.




Switch on the source equipment (Satellite, Free-view, DVD, VCR, etc.).



If you have not already done so, turn on both the Transmitter and Receiver by pressing the power button on the front of the units.



On the receiving TV, select the SCART channel assigned to the SCART socket that you plugged the Receiver in to. This may be labelled as SCART, AUX, AV, VIDEO, VCR or .



When controlling your source device from the receiving location, point your remote control at the IR Sensor you attached to your TV. Ensure you are using the correct remote control for your source device.

Using your DigiSender®

Advanced Functions

Changing the Audio/Video Channel

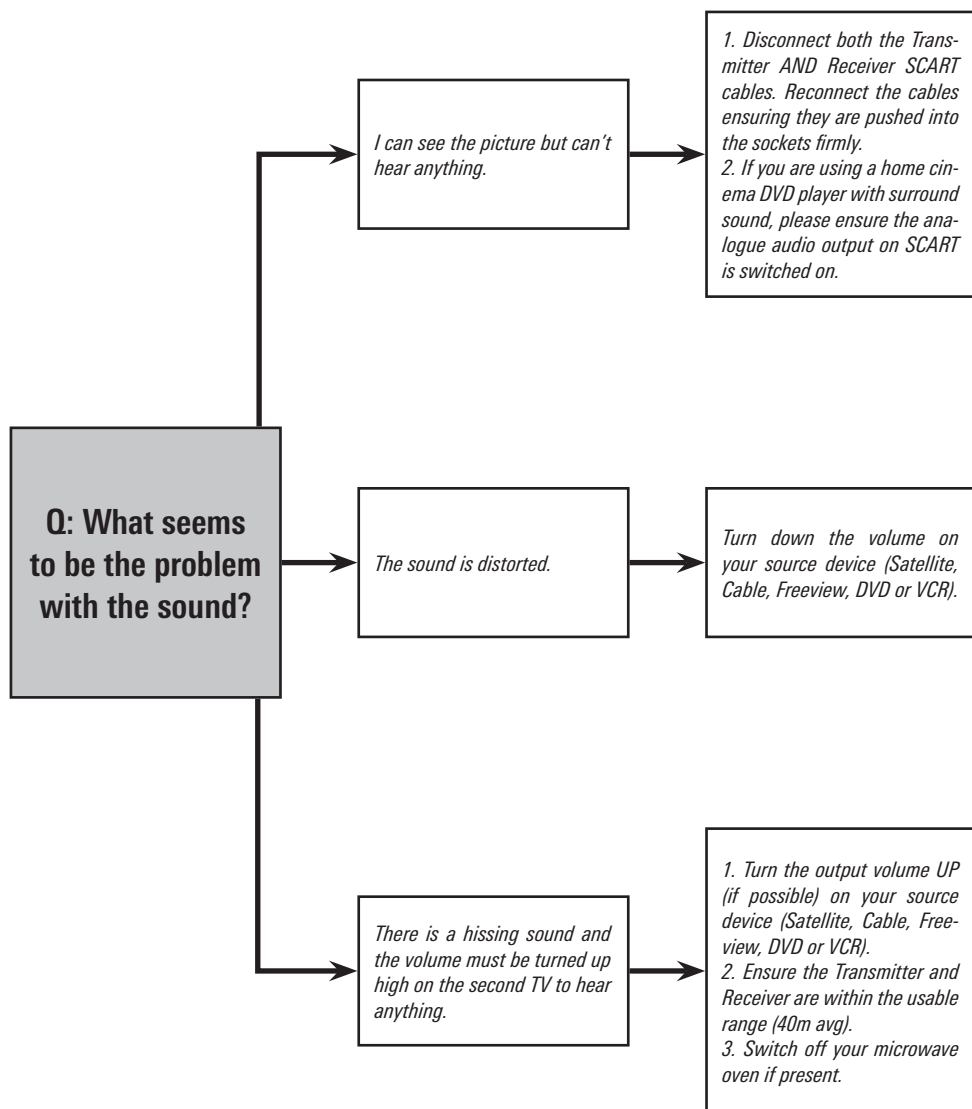
The DigiSender® Plug'n'Go™ LCD features 4 Audio/Video Channels. Each of these Audio/Video Channels slightly changes the frequency on which the DigiSender® Plug'n'Go™ LCD operates. Because the Audio/Video Channel switch allows you to 'fine tune' the frequency on which your DigiSender® Plug'n'Go™ LCD operates, it is possible to overcome most interference and reception troubles that may occur.

To change the Audio/Video Channel on your DigiSender® Plug'n'Go™ LCD, simply press the power button on the front of your Transmitter and Receiver.

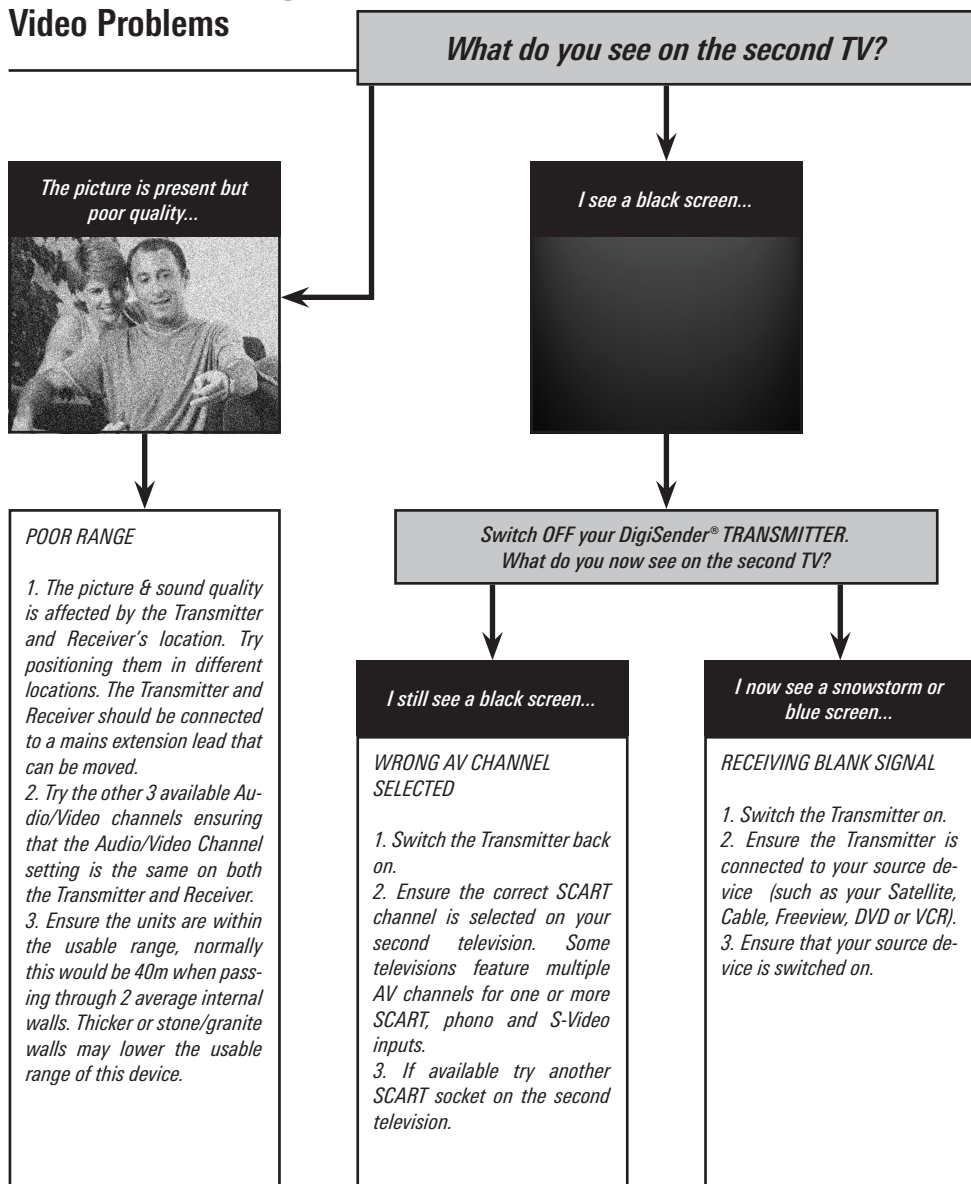
For your DigiSender® Plug'n'Go™ LCD to function correctly it is very important that the Audio/Video Channel settings are the same on both the Transmitter and Receiver.

Troubleshooting

Audio Problems



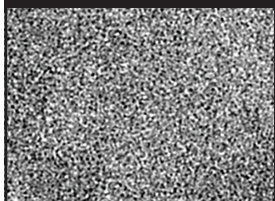
Troubleshooting Video Problems



Troubleshooting Video Problems

What do you see on the second TV?

I see a snowstorm or blue screen...



**Switch OFF your DigiSender® RECEIVER.
What do you now see on the second TV?**


I now see a black screen...

NOT RECEIVING SIGNAL

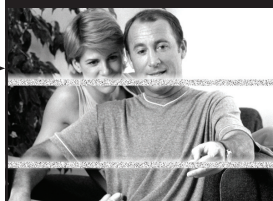
1. Switch the DigiSender® Receiver back on.
2. Ensure the DigiSender® Transmitter is switched on.
3. Try the other 3 available Audio/Video channels ensuring that the Audio/Video Channel is set the same on both the Transmitter and Receiver.

I still see a snowstorm or blue screen...

WRONG TV CHANNEL SELECTED

This indicates that the correct SCART Channel has NOT been selected on the second television. Look for buttons on this televisions remote control which could select the AV Channel such as EXT, AV, VIDEO, VCR, AUX, Channel 0 AND .

I see lines over the picture...



INTERFERENCE

This indicates one or more electrical devices are interfering with the DigiSender®. Make sure the Transmitter and Receiver are not directly on top of other electrical devices. Try all 4 Audio/Video Channels on your DigiSender® as one or more may still be available. Visit digisender.net or contact our helpline for information on configuring your equipment to work together.

Troubleshooting

Remote Relay Problems

If you have any difficulty operating your source equipment remote control in your second room please follow the advice below below:

1. Ensure the IR Emitter is connected to the socket labelled 'IR' on the Transmitter.
2. Ensure you are using the correct remote control in the second room. For instance, if you are trying to control your Satellite box you will need to use the Satellite remote control.
3. Ensure the IR Emitter is facing the IR sensor on your source equipment.
4. Move the IR Emitter further away from the source equipment.
5. Move the Transmitter AND Receiver further away from other electrical devices.
6. Try operating your source remote control closer to the Receiver.
7. Replace the batteries in your source remote control.
8. Try attaching the IR Sensor to another part of your receiving TV. Sometimes the TV can put out a bit of interference which can stop the IR Sensor from working properly.



Troubleshooting

Technical Support & Accessories

Technical Support

AEI Security & Communications Ltd is dedicated to providing our customers with first class customer care and technical support.

1. Website

Free technical advice is available online 24/7 at our dedicated support web site: ***www.aei.eu***

2. Online Videos

Watch online Installation and Troubleshooting Video Guides at: ***www.aei.eu/video***

3. Live Chat

Chat to one of our technical advisors live. See website for details.

4. Telephone

We have a dedicated helpline, open Monday to Friday, 8.30am - 4pm. ***Call 02071 931 413.***

Accessories



If you wish to transmit your source to more than 1 room, this can be achieved by using the additional receiver below.

To purchase visit us online at: ***www.easylife.com*** or call us on: ***02071 931 413.***

DX200-LCDRX - Plug'n'Go™ LCD Additional Receiver

- Transmit to even more TVs around your home!
- Add as many Receivers as you require!
- Requires existing DigiSender® Plug'n'Go™ LCD system.

Notes

We,

AEI Security & Communications Ltd.

Weslake Industrial Park, Harbour Road, Rye, East Sussex, TN31 7TE, United Kingdom

declare under our sole responsibility that the products bearing the series code prefixed:

DGx, DVx, DXx (*x refers to the specific model number*)

are in conformity with the essential requirements of Directive 1995/5/EC. These products have been tested against the following standards and specifications:

Low Voltage Directive

EN60950:2000

Safety of information technology equipment.

Electromagnetic Compatibility Directive

EN 301 489-3 V1.3.1: 11-2001

Specific conditions for Short-Range Devices (SRD) operating on frequencies between 9 KHz and 40 GHz.

EN 301 489-1 V1.3.1: 09-2001

Electromagnetic compatibility and Radio spectrum Matters (ERM); Electromagnetic Compatibility (EMC) standard for radio equipment and services; Part 1: Common technical requirements.

Radio Spectrum

EN 300 440-1 V1.3.1: 09-2001

Electromagnetic compatibility and Radio spectrum Matters (ERM); Short Range Devices; Radio equipment to be used in the 1 GHz to 40 GHz frequency range; Part 1: Technical characteristics and test methods.

Power Supply

EN55022: 2003

Information technology equipment. Radio disturbance characteristics. Limits and methods of measurement.

EN55024: 2003

Information technology equipment. Immunity characteristics. Limits and methods of measurement.

IEC 61000-3-2: 2001

Electromagnetic Compatibility (EMC) - Part 3-2: Limits - Limits for harmonic current emissions (equipment input current \leq 16 A per phase).

IEC 61000-3-3: 2001

Electromagnetic Compatibility (EMC) - Part 3-3: Limits - Limitations of voltage changes, voltage fluctuations and flicker in public low-voltage supply systems, equipment with rated current \leq 16 A per phase and not subject to conditional connection.

The product is marked with the CE marking and Notified Body Number according to directive 1999/5/EC.



Waste electrical products should not be disposed of with household waste. Please recycle where facilities exist. Check with your Local Authority or retailer for recycling advice.

CE 0359

AEI SECURITY & COMMUNICATIONS

Original Document of Conformity has been signed.

SPECIFICATIONS

Transmitter Inputs	1x DigiConnector™ SCART
Receiver Outputs	1x SCART
Audio/Video Frequency	5.725GHz ~ 5.875GHz
Audio/Video Channels	4
Modulation	FM
Remote Relay Frequency	433MHz
Remote Relay Channels	1
Remote Relay Compatibility	RC5, RC6
Video Input Level	1V PP (75Ω)
Video Input Colour	PAL
Audio Input Level	1V PP (Mod 1KHz, Dev 15KHz)
Audio Bandwidth	20Hz - 22KHz (-3dB)
Sensitivity	-90dB
Antenna	External Omni-Directional
Range	60m
Power	230V AC, 20mA, 50Hz

CW080312-2

© 2012 AEI Security & Communications Ltd. All rights reserved.

Registered in England: 02831823

AEI Security & Communications Ltd
Weslake Industrial Park
Rye Harbour Road, Rye
East Sussex
TN31 7TE
United Kingdom

Plug'n'Go and DigiConnector are trademarks of AEI Security & Communications Ltd.
DigiSender is a registered trademark of AEI Security & Communications Ltd.