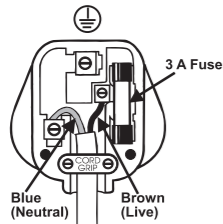


**FOR U.K. AND IRELAND ONLY**

If the plug is not suitable for the socket outlets in your home, it can be removed and replaced by a plug of the correct type. Please refer to "Installation of a plug" below.

**Installation of a plug applicable to U.K. and Ireland**



**NOTE:** If the terminals in the plug are not marked or if you are unsure or in doubt about the installation of the plug please contact a qualified electrician.

If a 13A 3-pin plug is fitted, it must be an ASTA approved plug, conforming to BS1363 standard. Replacement 3A fuses must be BSI or ASTABS1362 approved.

This product is fitted with a 13A plug complying to BS1363. If this plug is unsuitable or needs to be replaced, please note the following: The wires in the mains lead are coloured as such:

BROWN - LIVE  
 BLUE - NEUTRAL

Please note that the colour of these mains wires may not correspond with the colour markings that identify the terminals in your plug. Please proceed as follows:

The BROWN coloured wire must be connected to the terminal, which is marked with the letter "L" or is coloured RED.

The BLUE coloured wire must be connected to the terminal, which is marked with the letter "N" or is coloured BLACK.

DO NOT CONNECT either of these wires to the earth terminal in the plug. The earth terminal plug is marked with the letter "E", or with the earth symbol ⊕, or coloured GREEN, or GREEN and YELLOW.

**GUARANTEE**

Please keep your receipt as this will be required for any claims under this guarantee.

This appliance is guaranteed for 3 years after your purchase as described in this document.

During this guaranteed period, if in the unlikely event the appliance no longer functions due to a design or manufacturing fault, please take it back to the place of purchase, with your till receipt and a copy of this guarantee.

The rights and benefits under this guarantee are additional to your statutory rights, which are not affected by this guarantee. Only Holmes Products (Europe) Ltd. ("Holmes") has the right to change these terms.

Holmes undertakes within the guarantee period to repair or replace the appliance, or any part of appliance found to be not working properly free of charge provided that:

- you promptly notify the place of purchase or Holmes of the problem; and
- the appliance has not been altered in any way or subjected to damage, misuse, abuse, repair or alteration by a person other than a person authorised by Holmes.

Faults that occur through, improper use, damage, abuse, use with incorrect voltage, acts of nature, events beyond the control of Holmes, repair or alteration by a person other than a person authorised by Holmes or failure to follow instructions for use are not covered by this guarantee. Additionally, normal wear and tear, including, but not limited to, minor discoloration and scratches are not covered by this guarantee.

The rights under this guarantee shall only apply to the original purchaser and shall not extend to commercial or communal use.

If your appliance includes a country-specific guarantee or warranty insert please refer to the terms and conditions of such guarantee or warranty in place of this guarantee or contact your local authorized dealer for more information.

Waste electrical products should not be disposed of with Household waste. Please recycle where facilities exist. E-mail us at enquiriesEurope@jardencs.com for further recycling and WEEE information.

Holmes Products (Europe) Limited  
 1 Francis Grove  
 London  
 SW19 4DT  
 UK



**Holmes Products (Europe) Ltd.**  
 1 Francis Grove  
 London SW19 4DT  
 England

**Fax: +44 (0)20 8947 8272**  
**Email: enquiriesEurope@jardencs.com**  
**UK - Filter Sales Order Line - 0870 759 9000**  
**Website address: www.bionaire.com**  
**UK - Free phone Customer Service Helpline – 0800 052 3615**



© 2010 Sunbeam Products, Inc. doing business as Jarden Consumer Solutions. All rights reserved.  
 Distributed by Holmes Products (Europe) Ltd., 1 Francis Grove, London SW19 4DT, United Kingdom. Printed in PRC

© 2010 Sunbeam Products, Inc. faisant affaires sous le nom de Jarden Consumer Solutions. Tous droits réservés.  
 Distribué par Holmes Products (Europe) Ltd., 1 Francis Grove, London SW19 4DT, United Kingdom. Imprimé en RPC

P.N.123634



**DOUBLE BLADE  
 STAND FAN  
 WITH REMOTE CONTROL**

**MODEL: BASF1016GRC**



**INSTRUCTION MANUAL**

# BASF1016GRC

Figure 1

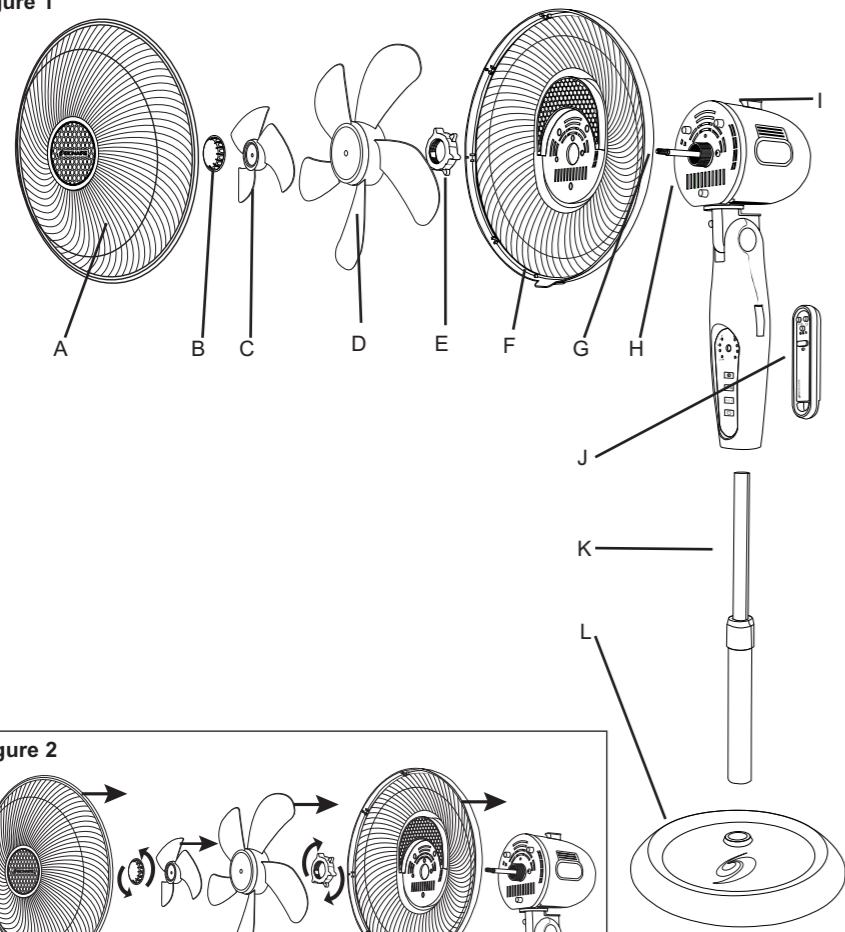


Figure 2

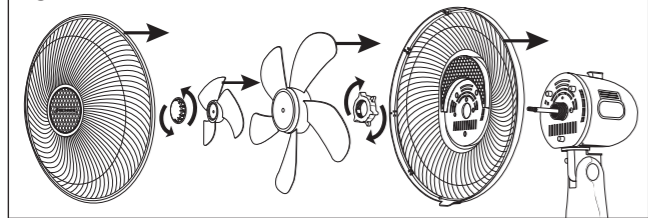


Figure 3

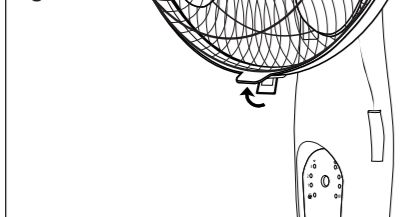
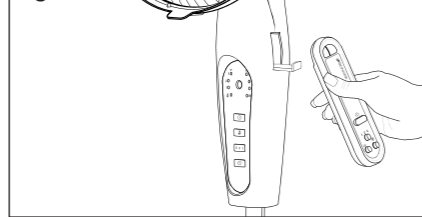


Figure 4



## ENGLISH

### PLEASE READ AND SAVE THESE INSTRUCTIONS

#### IMPORTANT INSTRUCTIONS

When using electrical appliances, basic safety precautions should always be taken including the following:-

- Use the fan only for purposes described in the instruction manual.
- To protect against electrical shock, do not immerse the fan, plug or cord in water or spray with liquids.
- Close supervision is necessary when any appliance is used by or near children.
- Unplug from the electrical outlet when not in use, when moving the fan from one location to another, before putting on or taking off parts and before cleaning.
- Avoid contact with any moving parts.
- Do not operate in the presence of explosive and/or flammable fumes.
- Do not operate fan until fully assembled with all parts properly in place.
- To avoid fire hazard, NEVER place the cord under rugs or any parts near an open flame, cooking or other heating appliance.
- Ensure that the fan is switched off from the supply mains before removing the guard.
- Do not operate any appliance with a damaged cord, plug, after the appliance malfunctions, or has been dropped/damaged in any manner.
- The use of attachments not recommended or sold by the appliance manufacturer may cause hazards.
- Do not use outdoors.
- Do not let the cord hang over the edge of a table or counter, or come into contact with hot surfaces.
- To disconnect from the electrical supply, grip the plug and pull from the wall outlet. DO NOT pull on the cord.
- Always use on a dry, level surface.
- Do not operate without the fan grills properly in place.
- This product is intended for household use ONLY and not for commercial or industrial applications.
- Should the fan stop working, first check the fuse in the plug (UK only) or fuse/circuit breaker at the distribution board is operating, before contacting the manufacturer or service agent.
- If the supply cord or plug is damaged, it must be replaced by the manufacturer or its service agent or a similarly qualified person in order to avoid hazard.

- This appliance is not intended for use by persons (including children) with reduced physical, sensory or mental capabilities, or lack of experience and knowledge, unless they have been given supervision or instruction concerning use of the appliance by a person responsible for their safety. Children should be supervised to ensure that they do not play with the appliance.

#### DESCRIPTIONS

See Figure 1

- A. Front Grill
- B. Fan Blade Lock Nut
- C. Small Fan Blade
- D. Large Fan Blade
- E. Rear Grill Nut
- F. Rear Grill
- G. Motor Shaft
- H. Motor Housing
- I. Oscillation Button
- J. Remote Control
- K. Expandable Pole
- L. Base

#### MISSING A PART FOR YOUR FAN?

Please call 0800 052 3615 for assistance.

#### BASE POLE ASSEMBLY

1. Extend the upper pole through the top of the lower pole and secure it firmly by turning the height adjust knob clockwise.
2. Insert the bottom of the lower pole into the hole on the top of the base.

#### FAN HEAD ASSEMBLY

You are now ready to assemble the fan head.

- 1: Position the rear grill over the motor shaft, making certain the 3 notches at the top and bottom of the rear grill fit over the 3 protruding notches on the motor housing. Make sure the rear grill fits securely against the motor housing. (Figure 2)
- 2: Fasten the rear grill in place using the rear grill nut. Turn the nut clockwise and tighten firmly. (Figure 2)
- 3: Slide the large fan blade, with the hollowed interior of the fan blade facing toward the rear grill, firmly onto the motor shaft. Then install the small fan blade. The blades have a "D" type hole that matches the tip of the motor shaft. These two should be aligned so that the blades can be properly assembled. Make sure that the fan blades rest on the pin on the motor.
 

**NOTE:** The shaft screw portion should protrude from the front of the blades.
- 4: Secure the fan blades onto the motor shaft by turning the fan blade lock nut counter-clockwise (make sure the blades are firmly in position). (Figure 2)

5. Center the front grill, aligning the Bonaire® logo so it is horizontal and parallel to the floor. Put onto the rear grill and snap in place. Make sure to secure the locking-clip on the bottom of the rear grill. (Figure 3) You should hear a click.

#### Final Assembly

1. Insert the fan head assembly into the pole/base assembly. The placement is done by a secure press fit that tightens the assembly in place so the fan head should be slightly pressed down.
2. Lower the remote control holder on the right side of the front control housing and place the hollow end of the remote control housing (female end) onto the remote control holder. (Figure 4)

#### OPERATING INSTRUCTIONS

1. Set fan on a dry, level surface.
2. Plug power cord into the appropriate outlet. The fan will make an audible sound, indicating it is plugged in.
3. Press the power button "⏻" to change the power status between on or off. The speed light of the last selection will light up.
4. The speed is adjustable by pushing the speed button "1 2 3" to cycle the speed mode into three speed levels: Speed 1, Speed 2, Speed 3. Press and hold speed button for more than 2 seconds to turn fan off. Your fan has a speed recall memory so the unit will remember the last speed used.
5. If you would like to program the timer to set the number of hours you would like to keep the fan on, press the timer button "⌚" to select the timer setting into the following options: 1 hour, 2 hours, 4 hours, 8 hours.
6. To oscillate the fan head, push the oscillation button "↔" located at the top of the motor housing down to turn it on. To stop the oscillation, pull the oscillation button "↔" up.
7. To operate the breeze or sleep modes, press the button "🌬️". Pressing with the green light is for breeze mode. It randomly circulates through the speed settings to simulate a natural breeze. Pressing with the amber light is for sleep mode. It cycles through the speed settings in order. Pressing with no light is for off.

#### REMOTE CONTROL HANDHELD UNIT

- The remote includes control buttons for Power on/off "⏻", and Speed Selections "1 2 3", and Breeze/Sleep Modes "🌬️".
- The speed recall memories will also work with the remote control.
- Your remote control requires 2 AAA batteries (not included) for operation.
- Install the 2 AAA batteries in the rear compartment of the remote, according to the diagram shown inside.
- Do not mix old and new batteries.
- Do not mix alkaline, standard (carbon-zinc), or rechargeable (nickel-cadmium) batteries.

#### ADJUSTMENT

##### Height Adjustment

This fan is equipped with an expandable pole, which allows you to adjust the height of the fan according to your preference.

##### Tilt Adjustment

To change the tilting angle of the fan head, move the fan head manually to the desired angle.

#### CLEANING AND MAINTENANCE

Follow these instructions to correctly and safely care for your Bonaire® fan. Please remember:

- Always unplug the fan before cleaning or assembly.
- Do not allow water to drip on or into the fan motor housing.
- Be sure to use a soft cloth, moistened with a mild soap solution.
- Do not use any of the following as a cleaner: petrol, thinners or benzene.

##### Fan Blade cleaning

(See instructions for fan head assembly)  
(See instructions for fan head assembly)

1. Carefully remove the front grill from the clips.
2. Clean the fan blades, front and rear grills with a soft moist cloth.
3. Replace the fan blades, tighten screw and securely fasten the front grill.

##### Fan head, base and pole cleaning

Using a soft, moist cloth, with or without a mild soap solution, carefully clean the fan base, pole and head. Please use caution around the motor housing area. Do not allow the motor or other electrical components to be exposed to water.

#### FAN STORAGE

Your fan can be stored either partially disassembled or assembled.

- It is important to keep it in a safe, dry location.
- If stored disassembled, we recommend using the original (or appropriately sized) box.
- If stored assembled or partially assembled, remember to protect the fan head from dust.