

BiPAC 7300M
802.11g MIMO ADSL2+ Router

Quick Start Guide



For more detailed instructions on configuring and using the 802.11g MIMO ADSL2+ Router, please refer to the on-line manual.

Package Contents

- BiPAC 7300M 802.11g MIMO ADSL2+ Router
- CD-ROM containing the on-line manual
- RJ-11 ADSL/telephone Cable
- Ethernet (CAT-5 LAN) Cable
- AC-DC power adapter (12VDC, 1A)
- This Quick Start Guide



Warning

- ✓ Do not use the router in high humidity or high temperatures.
- ✓ Do not use the same power source for the router as other equipment.
- ✓ Do not open or repair the case yourself. If the router are too hot, turn off the power immediately and have it repaired at a qualified service center.
- ✓ Avoid using this product and all accessories outdoors.

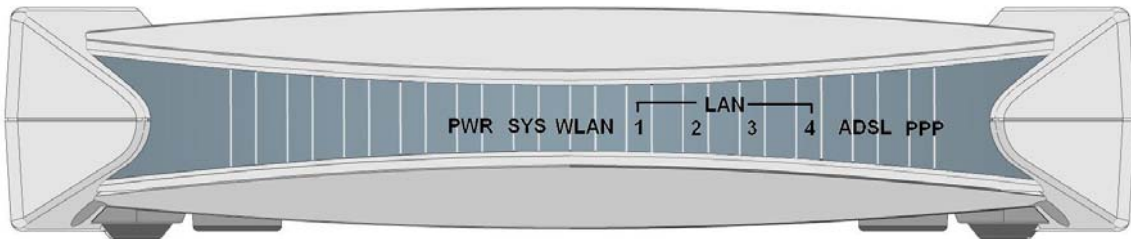


Attention

- ✓ Place the router on a stable surface.
- ✓ Only use the power adapter that comes with the package. Using a different voltage rating power adaptor may damage the router.

The Front LEDs

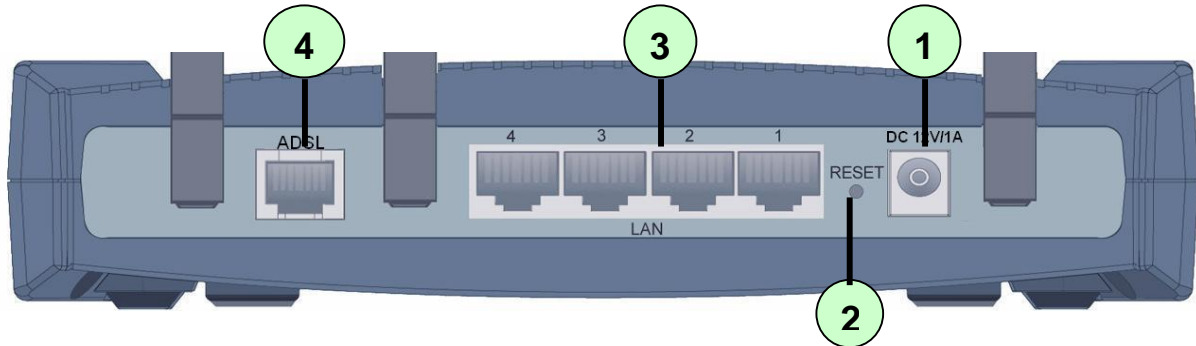
● BiPAC 7300M



LED		Meaning
1	PPP :	● Lit steady when there is a PPPoA / PPPoE connection.
2	ADSL:	● Lit when successfully connected to an ADSL DSLAM (“linesync”).
3	LAN Port:	● Lit when connected to an Ethernet device. ● Green for 100Mbps; Orange for 10Mbps. ● Blinking when data is Transmitted / Received.
4	WLAN :	● Lit green when the wireless connection is established. ● Flashes when sending/receiving data.
5	SYS :	● Lit when the system is ready.
6	PWR :	● Lit when power is ON.

The Rear Ports

● BiPAC 7300M



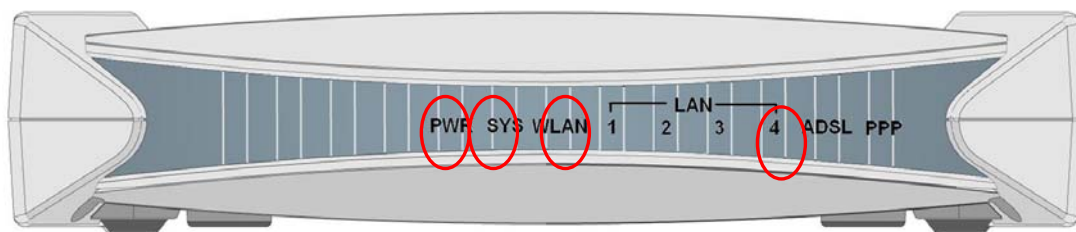
Port		Meaning
1	DC 12V/1A	Connect the supplied power adapter to this jack.
2	RESET (Emergency/Failure Recovery)	<p>1.After the device is powered on, press it to perform Failure recover for a dead routers: Simply hold the Emergency/Failure Recovery Button” when power on the routers and download the Application if necessary.</p> <p>2.Perform the Emergency Recover for the missing Password case:(Using LEDs indications) Simply hold the Emergency/Failure Recovery Button, when router can be accessed from GUI, until the LEDs all turn Off, turn On and then Turn Off. Then, router will perform configuration factory reset and router reboot.</p>
3	LAN (RJ-45 connector)	Connect a UTP Ethernet cable (Cat-5 or Cat-5e) to one of the four LAN ports when connecting to a PC or an office/home network of 10Mbps or 100Mbps.
4	ADSL	Connect the supplied RJ-11 (“telephone”) cable to this port when connecting to the ADSL/telephone network.

Connecting BiPAC 7300M

1. Connect the Router to a LAN (Local Area Network) and the ADSL/telephone (**LINE**) network.
2. Power on the device.

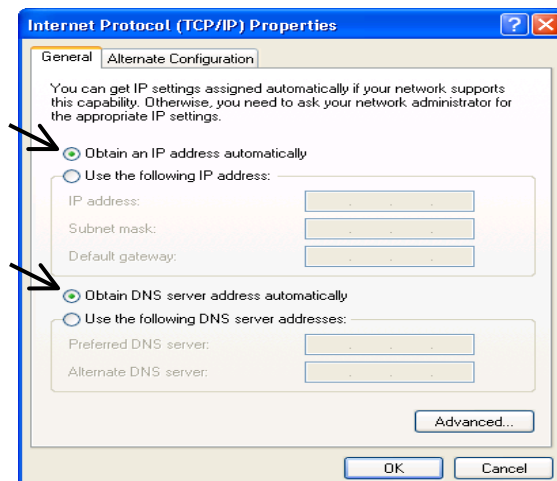
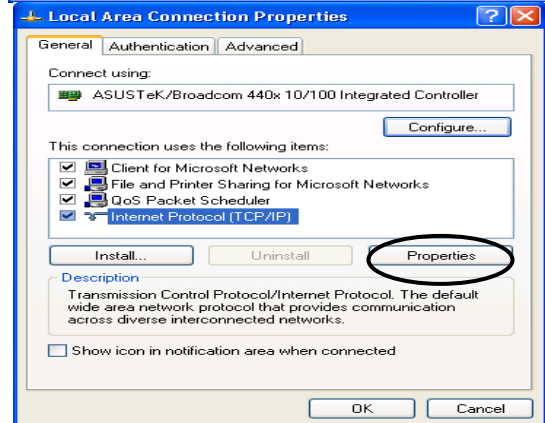
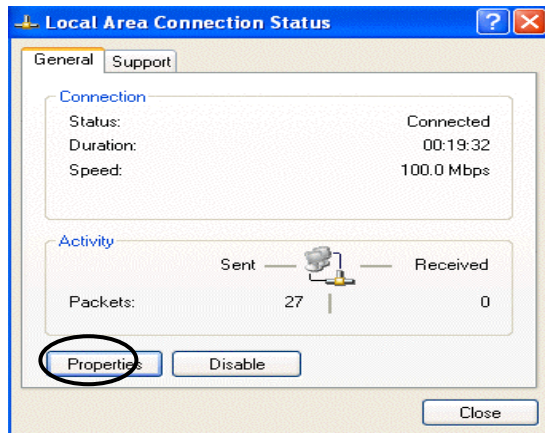
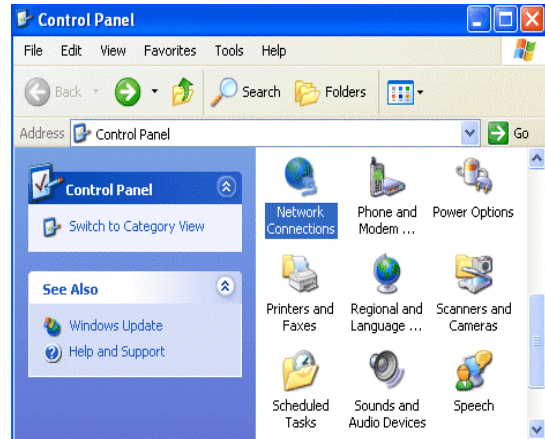


3. Make sure the **PWR**, **SYS**, and **WLAN** LEDs are lit steadily and that the relevant **LAN** LED is lit.



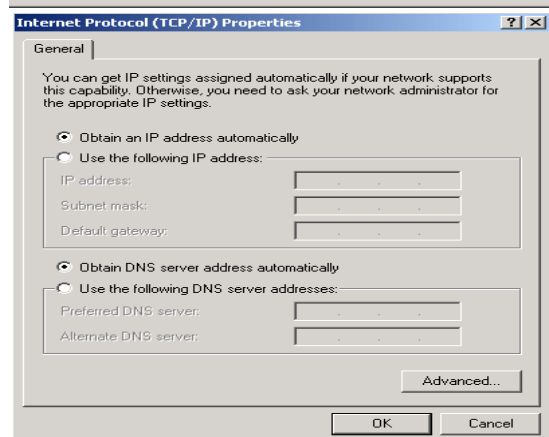
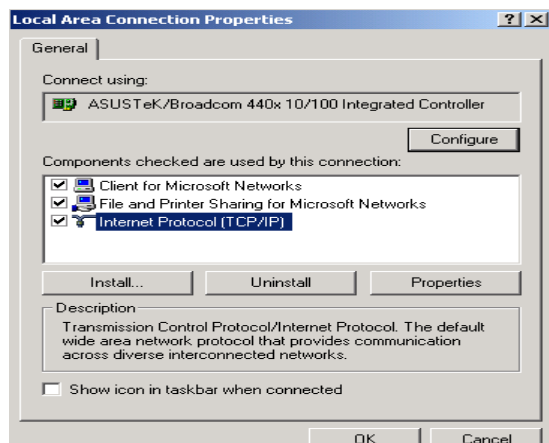
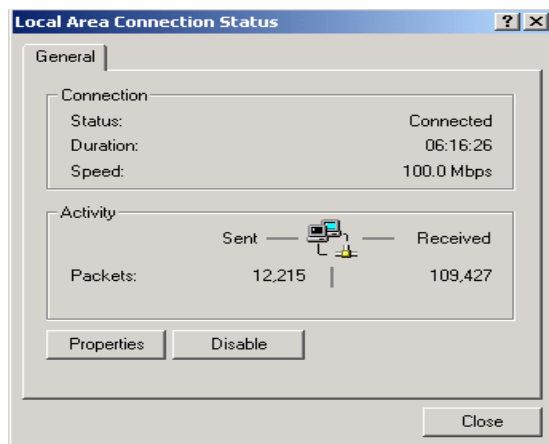
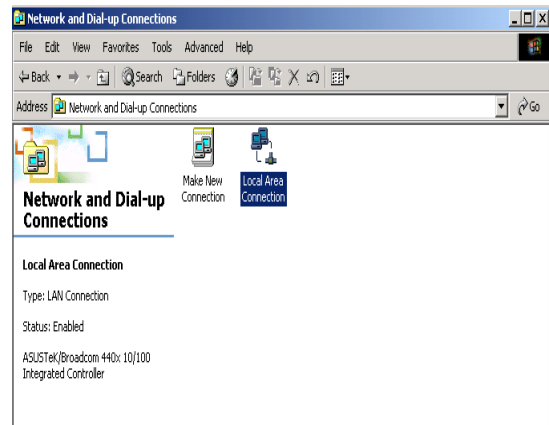
Configuring PC in Windows XP

1. Go to **Start / Control Panel (in Classic View)**. In the Control Panel, double-click on **Network Connections**
2. Double-click **Local Area Connection**.
3. In the **Local Area Connection Status** window, click **Properties**.
4. Select **Internet Protocol (TCP/IP)** and click **Properties**.
5. Select the **Obtain an IP address automatically** and the **Obtain DNS server address automatically** radio buttons.
6. Click **OK** to finish the configuration.



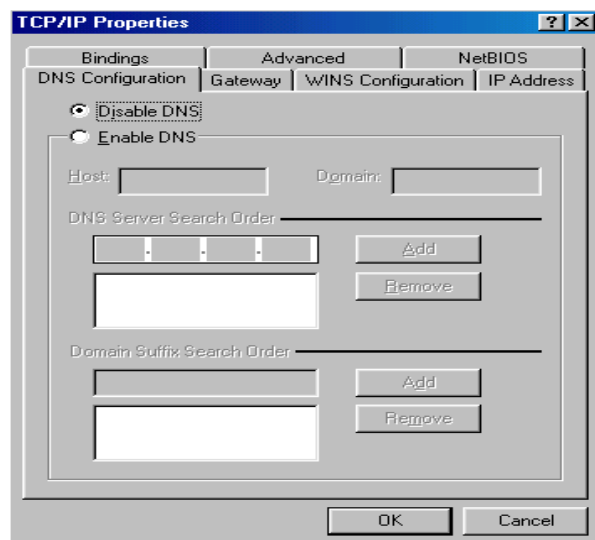
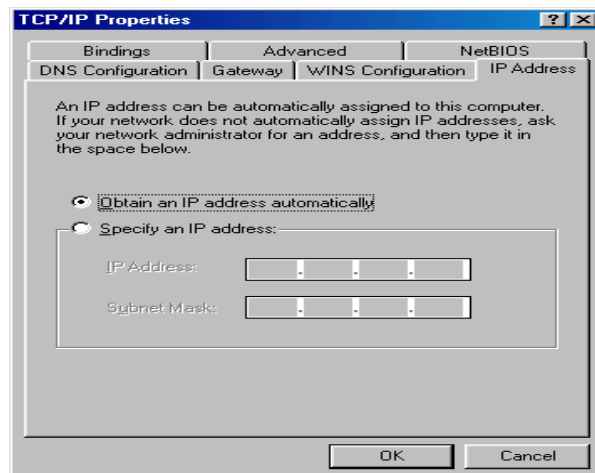
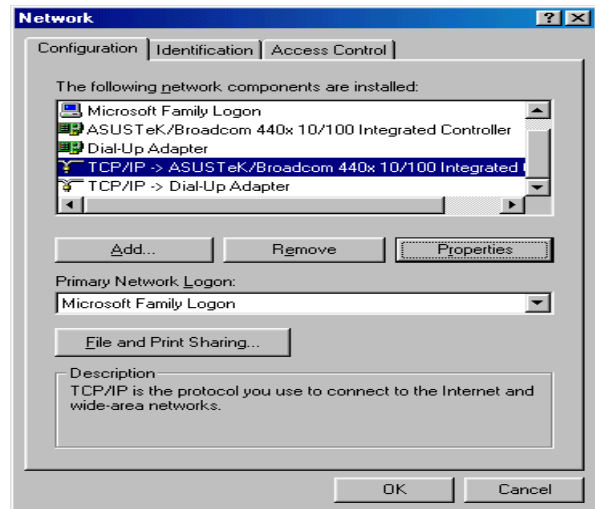
Configuring PC in Windows 2000

1. Go to **Start / Settings / Control Panel**. In the Control Panel, double-click on **Network and Dial-up Connections**.
2. Double-click **Local Area Connection**.
3. In the **Local Area Connection Status** window click **Properties**.
4. Select **Internet Protocol (TCP/IP)** and click **Properties**.
5. Select the **Obtain an IP address automatically** and the **Obtain DNS server address automatically** radio buttons.
6. Click **OK** to finish the configuration.



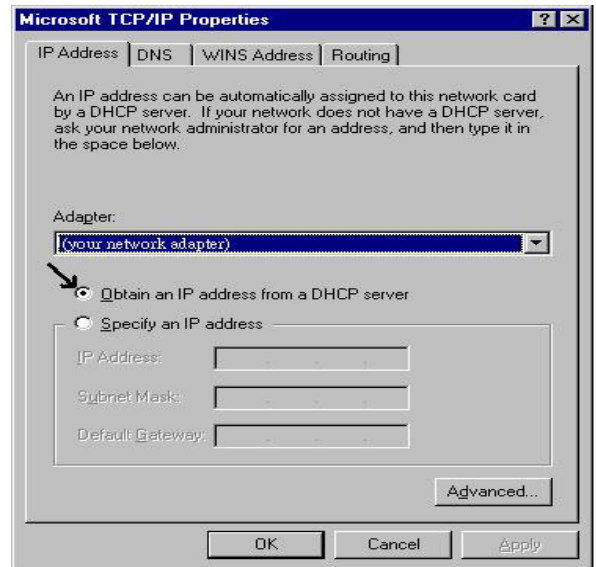
Configuring PC in Windows 98/Me

1. Go to **Start / Settings / Control Panel**. In the Control Panel, double-click on **Network** and choose the **Configuration** tab.
2. Select **TCP/IP -> NE2000 Compatible**, or the name of your Network Interface Card (NIC) in your PC.
3. Select the **Obtain an IP address automatically** radio button.
4. Then select the **DNS Configuration** tab.
5. Select the **Disable DNS** radio button and click **OK** to finish the configuration.



Configuring PC in Windows NT4.0

1. Go to **Start / Settings / Control Panel**. In the Control Panel, double-click on **Network** and choose the **Protocols** tab.
2. Select **TCP/IP Protocol** and click **Properties**.
3. Select the **Obtain an IP address from a DHCP server** radio button and click **OK**.



Configuring Your 802.11g MIMO ADSL2+ Router



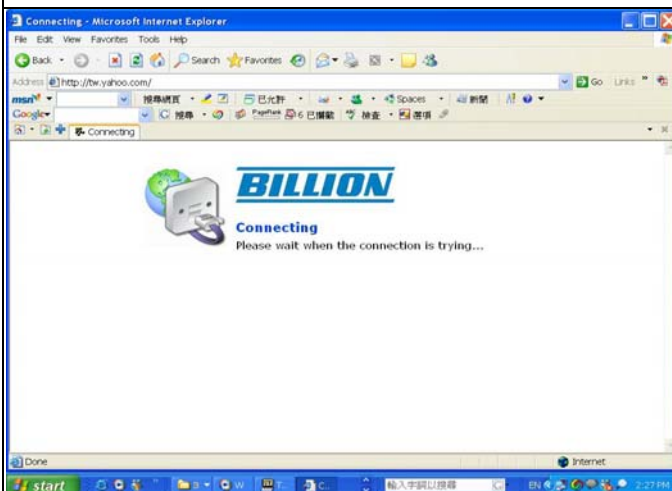
1. To configure this device, you must have IE 5.0 / Netscape 4.5 or above installed
2. You may configure the router for Internet access in two ways:
 - Easy Sign On (EZSO) ● Web Configuration

Easy Sign On:

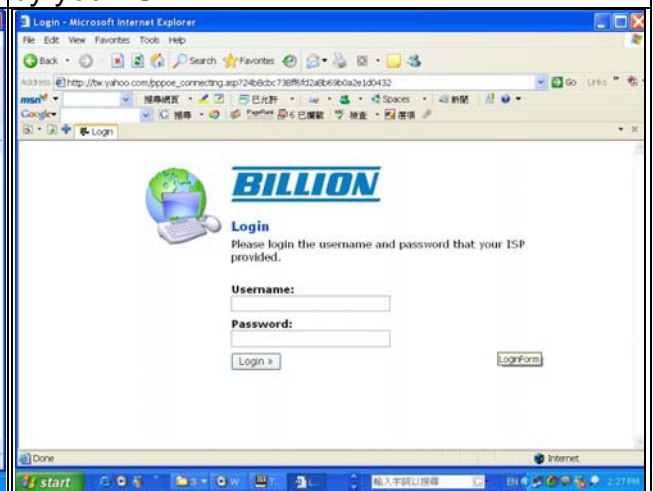
User just installs all of cables and uses the browser to surf Internet. At this time, the EZSO WEB GUI will be popped up and request you to input some basic information you get from ISP. After this, you can surf Internet right away.

■ PPPoE / PPPoA

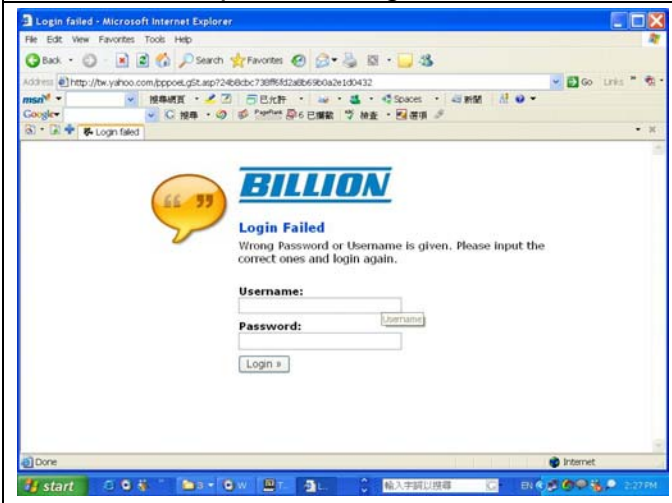
1. Please wait when the connection is trying.



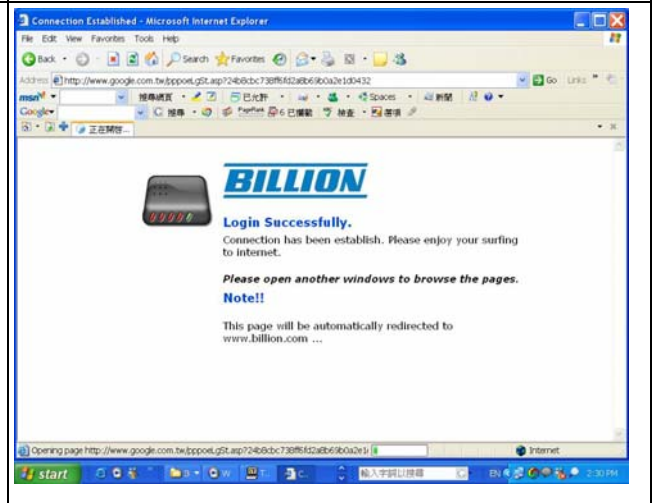
2. Enter the username and password provide by your ISP.



3. If login failed, Please input the correct username and password again.

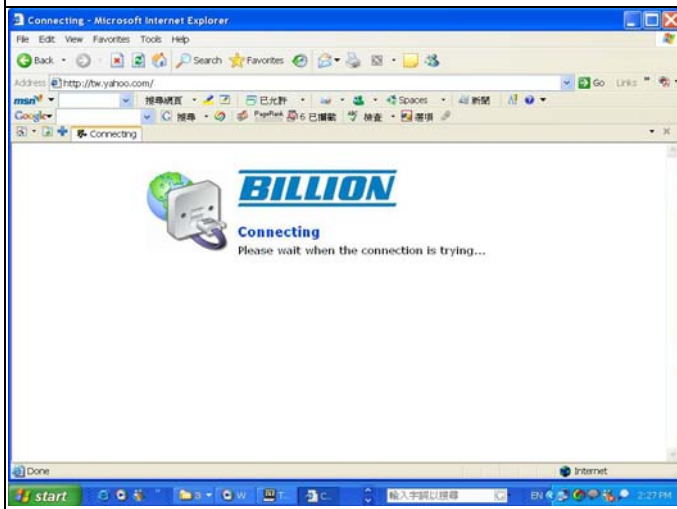


4. Login Successfully.

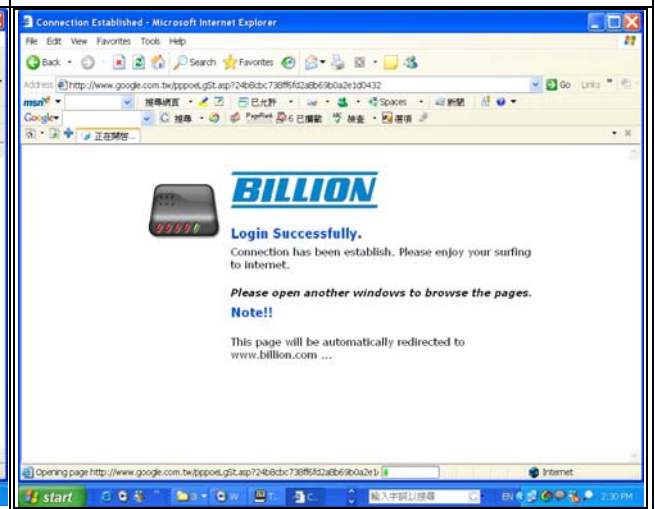


DHCP

1. Please wait when the connection is trying.

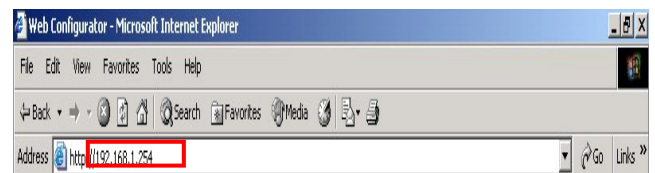


2. Login Successfully.



Web Configuration:

1. Open the web browser and type <http://192.168.1.254> in the browser's address box. This number is the default IP address for this router. Press **Enter**.



2. A username and password window will appear. **The default username and password are admin and admin.** Press **OK** to proceed.

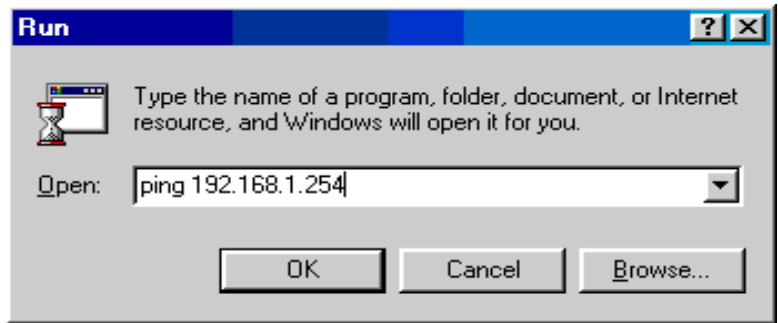


3. You will get a status report on web page.

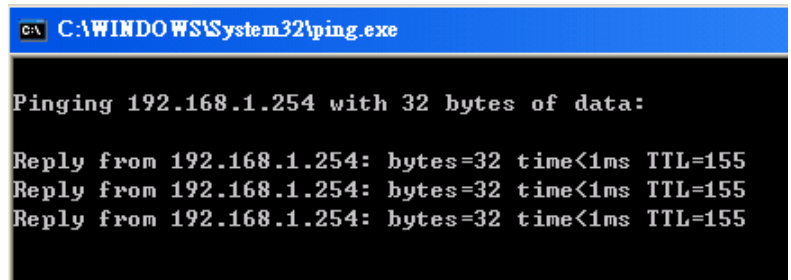


Verifying Your Local Network Connection with the Device

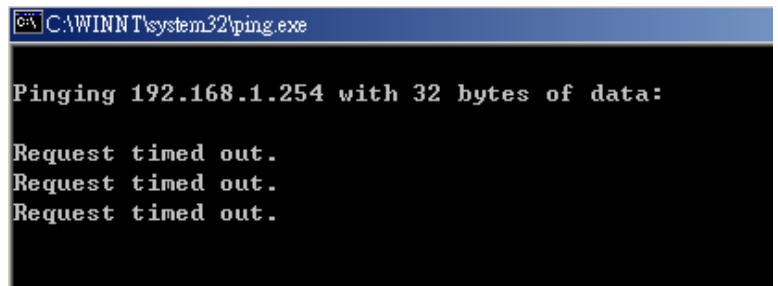
To see if this ADSL Router is visible on the local network, go to **Start / Run**. In the Run dialog box, type “**ping 192.168.1.254**” then press **OK**.



A command prompt window will pop out. If your ping is successful which means your local network is able to reach to the device, then the command prompt window will close up automatically.



Connection fails, when you see “**Request timed out**” in the command prompt window. You may need to check your set up.



Product Support and Contact Information

Most problems can be solved by referring to the **Troubleshooting** section in the User’s Manual. If you cannot resolve the problem with the **Troubleshooting** chapter, please contact the dealer where you purchased this product.

Contact Billion

AUSTRALIA

<http://www.billion.com.au>

©2006 Billion Electric Co, PC Range P/L. All Rights Reserved.

WORLDWIDE

<http://www.billion.com>

Mac OS is a registered Trademark of Apple Computer, Inc.

Windows 98, Windows NT, Windows 2000, Windows Me and Windows XP are registered Trademarks of Microsoft Corporation.