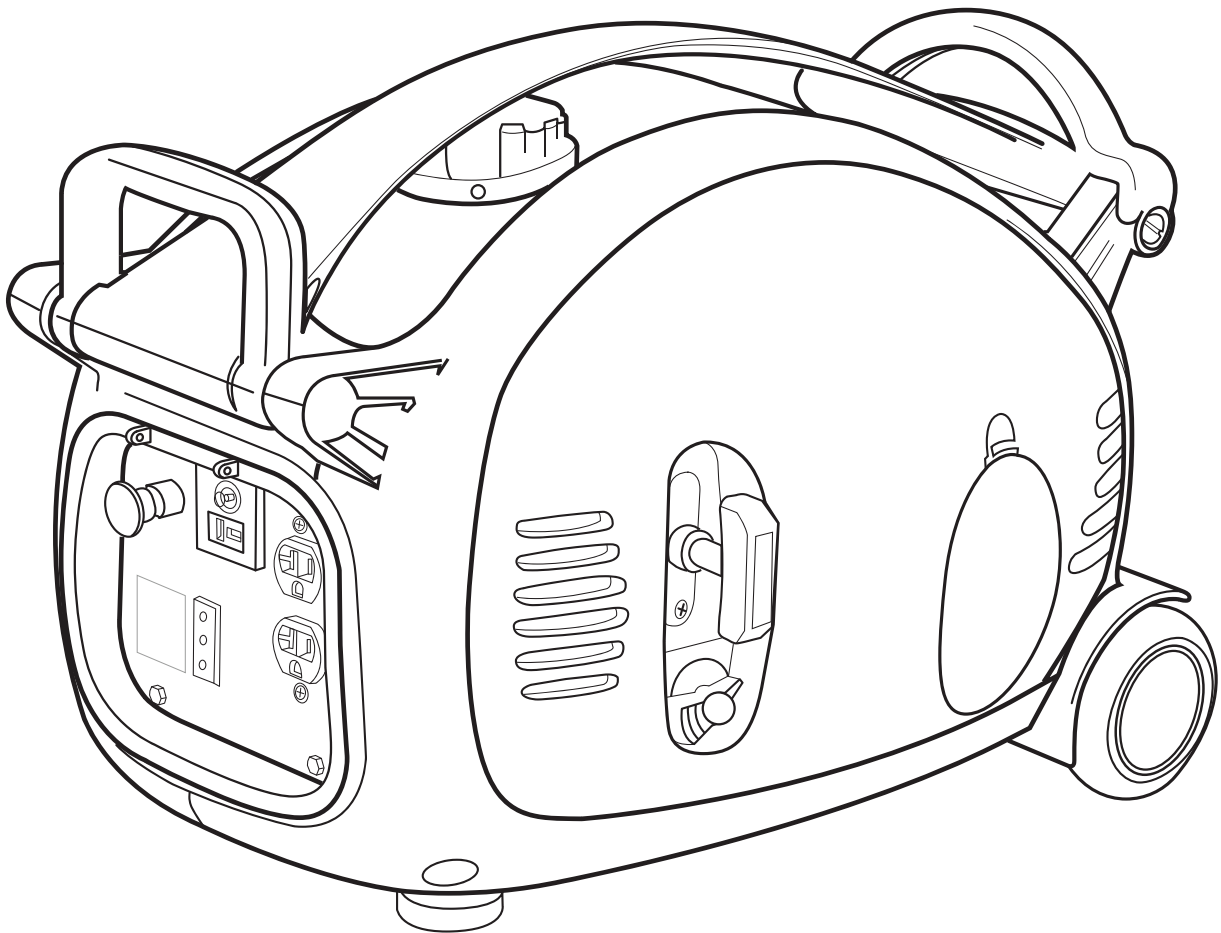




Owner's Manual

2000 W Generator



WARNING! To Reduce The Risk Of Injury, User
Must Read And Understand Instruction Manual.

SP-GG200D

FOR SERVICE CALL: 888-896-6881
PARA SERVICIO LLAME: 888-896-6881

www.steele-products.com

2000W Generator

Table of Contents

Topic	Page
Limited Warranty	3
Safety Guidelines	5
General Precautions	6
Battery	15
Assembly	16
Operation	17
Inspection, Cleaning and Maintenance	21
Installation	23
Specifications	25
General Parts Listing	26



WARNING! READ AND UNDERSTAND ALL SAFETY PRECAUTIONS IN THIS MANUAL BEFORE OPERATING. FAILURE TO COMPLY WITH INSTRUCTIONS IN THIS MANUAL COULD RESULT IN PERSONAL INJURY, PROPERTY DAMAGE, AND/ OR VOIDING OF YOUR WARRANTY. STEELE® WILL NOT BE LIABLE FOR ANY DAMAGE BECAUSE OF FAILURE TO FOLLOW THESE INSTRUCTIONS.

Owner's Manual

Limited Warranty

STEELE® warrants to the original purchaser who uses the product in a consumer application (personal, residential or household usage) that all products covered under this warranty are free from defects in material and workmanship for one year from the date of purchase. All products covered by this limited warranty which are used in commercial applications (i.e. income producing) are warranted to be free of defects in material and workmanship for 90 days from the date of original purchase. Products covered under this warranty include air compressors, air tools, service parts, pressure washers and generators.

STEELE® will repair or replace, at STEELE®'s sole option, products or components which have failed within the warranty period. Service will be scheduled according to the normal work flow and business hours at the service center location, and the availability of replacement parts. All decisions of STEELE® with regard to this limited warranty shall be final.

This warranty gives you specific legal rights, and you may also have other rights which vary from state to state.

RESPONSIBILITY OF ORIGINAL PURCHASER (initial User):

To process a warranty claim on this product, DO NOT return item to the retailer. The product must be evaluated by an Authorized Warranty Service Center. For the location of the nearest Authorized Warranty Service Center contact the retailer or place of purchase.

Retain original cash register sales receipt as proof of purchase for warranty to work.

Use reasonable care in the operation and maintenance of the product as described in the Owner's Manual(s).

Deliver or ship the product to the Authorized Warranty Service Center. Freight costs, if any must be paid by the purchaser.

If the purchaser does not receive satisfactory results form the Authorized Warranty Service Center, the purchaser should contact STEELE®.

2000W Generator

Limited Warranty (cont'd)

THIS WARRANTY DOES NOT COVER:

- Merchandise sold as reconditioned, used as rental equipment, or floor or display models.
- Merchandise that has become damaged or inoperative because of ordinary wear, misuse, cold, heat, rain, excessive humidity, freeze damage, use of improper chemicals, negligence, accident, failure to operate the product in accordance with the instructions provided in the Owner's Manual(s) supplied with the product, improper maintenance, the use of accessories or attachments not recommended by All-Power America, or unauthorized repair or alterations.
- Repair and transportation costs of merchandise determine not to be defective.
- Costs associated with assembly, required oil, adjustments or other installation and start-up costs.
- Expendable parts or accessories supplied with the product which are expected to become inoperative or unusable after a reasonable period of use.
- Merchandise sold by All-Power America which has been manufactured by and identified as the product of another company, such as gasoline engines. The product manufacturer's warranty, if any, will apply.
- ANY INCIDENTAL, INDIRECT OR CONSEQUENTIAL LOSS, DAMAGE, OR EXPENSE THAT MAY RESULT FROM ANY DEFECTS, FAILURE OR MALFUNCTION OF THE PRODUCT IS NOT COVERED BY THIS WARRANTY. Some states do not allow the exclusion, so it may not apply to you.
- IMPLIED WARRANTIES, INCLUDING THOSE OF MERCHANTABILITY OR FITNESS FOR A PARTICULAR PURPOSE, ARE LIMITED TO ONE YEAR FROM THE DATE OF ORIGINAL PURCHASE. Some states do not allow limitations on how long an implied warranty lasts, so the above limitations may not apply to you.

Owner ' s Manual

Safety Guidelines - Definitions

This manual contains important information that you need to know and understand in order to protect YOUR SAFETY and to PREVENT EQUIPMENT PROBLEMS. The following symbols help you recognize this information. Please read the manual and pay attention to these sections.

Save These Important Safety Instructions!

Read and understand all of these safety instructions. Be sure to retain them for future use.



WARNING! WARNINGS INDICATE A CERTAINTY OR STRONG POSSIBILITY OF PERSONAL INJURY OR DEATH IF INSTRUCTIONS ARE NOT FOLLOWED.



CAUTION: CAUTIONS INDICATE A POSSIBILITY OF EQUIPMENT DAMAGE IF INSTRUCTIONS ARE NOT FOLLOWED.



NOTE: NOTES GIVE HELPFUL INFORMATION



WARNING! IMPROPER OPERATION OR MAINTENANCE OF THIS PRODUCT COULD RESULT IN SERIOUS INJURY AND PROPERTY DAMAGE. READ AND UNDERSTAND ALL WARNINGS AND OPERATING INSTRUCTIONS BEFORE USING THIS EQUIPMENT. WHEN USING AIR TOOLS, BASIC SAFETY PRECAUTIONS SHOULD ALWAYS BE FOLLOWED TO REDUCE THE RISK OF PERSONAL INJURY.

2000W Generator

General Precautions



WARNING! FAILURE TO FOLLOW THESE INSTRUCTIONS CAN RESULT IN SEVERE INJURY OR DEATH.



DANGER **Carbon Monoxide**

Using a generator indoors WILL KILL YOU IN MINUTES.



Carbon Monoxide

Generator exhaust contains high levels of carbon monoxide (CO), a poisonous gas you cannot see or smell. If you can smell the generator exhaust, you are breathing CO. But even if you cannot smell the exhaust, you could be breathing CO.

- NEVER use a generator inside homes, garages, crawlspaces, or other partly enclosed areas. Deadly levels of carbon monoxide can build up in these areas. Using a fan or opening windows and doors does NOT supply enough fresh air.
- ONLY use a generator outdoors and far away from open windows, doors, and vents. These openings can pull in generator exhaust.

Even when you use a generator correctly, CO may leak into the home. ALWAYS use a battery-powered or battery-backup CO alarm in the home.

If you start to feel sick, dizzy, or weak after the generator has been running, move to fresh air RIGHT AWAY. See a doctor. You could have carbon monoxide poisoning.

Gasoline and Oil



This product requires oil and fuel. Attempting to start the engine without oil will ruin the engine and void the warranty. Work in well ventilated area. Keep cigarettes, flames or sparks away from the work area or where gasoline is stored.



WARNING! GASOLINE IS EXTREMELY FLAMMABLE AND IS EXPLOSIVE UNDER CERTAIN CONDITIONS. KEEP OUT OF REACH OF CHILDREN.

- Gasoline fuel and fumes are flammable and potentially explosive. Use proper fuel storage and handling procedures. Always have multiple ABC class fire extinguishers nearby.
- Keep the generator and surrounding area clean at all times.
- Fuel or oil spills must be cleaned up immediately. Dispose of fluids and cleaning materials as per any local, state, or federal codes and regulations. Store oily rags in a covered metal container.
- Never store fuel or other flammable materials near the generator.

Owner ' s Manual

General Precautions (cont'd)

Gasoline and Oil (cont'd)

- Do not smoke, or allow sparks, flames or other sources of ignition around the engine and fuel tank. Fuel vapors are explosive.
- Keep grounded conductive objects, such as tools, away from exposed, live electrical parts and connections to avoid sparking or arcing. These events could ignite fumes or vapors.
- Do not refill the fuel tank while the engine is running or while the engine is still hot. Do not operate the generator with known leaks in the fuel system
- Excessive buildup of unburned fuel gases in the exhaust system can create a potentially explosive condition. This buildup can occur after repeated failed start attempts, valve testing, or hot engine shutdown. If this occurs, open exhaust system drain plugs, if equipped, and allow the gases to dissipate before attempting to restart the generator.
- Use only engine manufacturer recommended fuel and oil.

Hot Components



WARNING! ENGINE AND EXHAUST SYSTEM PARTS BECOME VERY HOT AND REMAIN HOT FOR SOME TIME AFTER THE ENGINE IS RUN. WEAR INSULATED GLOVES OR WAIT UNTIL THE ENGINE AND EXHAUST SYSTEM HAVE COOLED BEFORE HANDLING THESE PARTS.

2000W Generator

General Precautions (cont'd)

Work Area

- Keep your work area clean and well lit. Cluttered benches and dark areas invite accidents.
- Do not operate power tools in explosive atmospheres, such as in the presence of flammable liquids, gases, or dust. Generators create sparks which may ignite the dust or fumes.
- Keep bystanders, children, and visitors away while operating a generator. Provide barriers or shields as needed.

Electrical Safety

- Grounded tools must be plugged into an outlet properly installed and grounded in accordance with all codes and ordinances. Never remove the grounding prong or modify the plug in any way. Do not use any adapter plugs.
- Grounding provides a low-resistance path to carry electricity away from the user in the event of an electrical malfunction.
- Double insulated tools are equipped with a polarized plug where one blade is wider than the other. This plug fits in a polarized outlet only one way. If the plug does not fit fully in the outlet, reverse the plug. If it still does not fit, contact a qualified electrician to install a polarized outlet. Do not change the plug in any way. Double insulation eliminates the need for the three-wire grounded power cord and grounded power supply system.
- Avoid body contact with grounded surfaces such as pipes, radiators, ranges, and refrigerators. There is an increased risk of electric shock if your body is grounded.
- Do not expose generator to rain or wet conditions. Water entering a generator will increase the risk of electric shock.
- Do not abuse the power cord. Keep power cords away from heat, oil, sharp edges, or moving parts. Replace damaged power cords immediately. Damaged power cords increase the risk of electric shock.
- When operating a power tool outside, use an outdoor extension cord marked “W-A” or “W”. These extension cords are rated for outdoor use, and reduce the risk of electric shock.



Owner ' s Manual

General Precautions (cont'd)

Electrical Safety (cont'd)

- All connections and conduits from the generator to the load must only be installed by trained and licensed electricians, and in compliance with all relevant local, state, and federal electrical codes and standards, and other regulations where applicable.
- The generator must be earth-grounded for fixed installations in accordance with all relevant electrical codes and standards before operation.
- Do not attempt to connect or disconnect load connections while standing in water, or on wet or soggy ground.
- Do not touch electrically energized parts of the generator and interconnecting cables or conductors with any part of the body, or with any non-insulated conductive object.
- Connect the generator only to a load or electrical system (110/120 volt) that is compatible with the electrical characteristics and rated capacities of the generator.
- Before servicing equipment powered by the generator, disconnect the equipment from its power input.
- Keep all electrical equipment clean and dry. Replace any wiring where the insulation is cracked, cut abraded or otherwise degraded. Replace terminals that are worn, discolored, or corroded. Keep terminals clean and tight.
- Insulate all connections and disconnected wires.
- Guard against electric shock. Prevent body contact with grounded surfaces such as pipes, radiators, ranges, and refrigerator enclosures.

Personal Safety

- Stay alert. Watch what you are doing, and use common sense when operating a generator. Do not use generator while tired or under the influence of drugs, alcohol, or medication. A moment of inattention while operating generators may result in serious personal injury.
- Dress properly. Do not wear loose clothing or jewelry. Contain long hair. Keep your hair, clothing, and gloves away from moving parts. Loose clothes, jewelry, or long hair can be caught in moving parts.

2000W Generator

General Precautions (cont'd)

Personal Safety (cont'd)

- Avoid accidental starting. Make sure the power switch is in its “OFF” position, and disconnect the spark plug wire when not in use.
- Remove adjusting keys or wrenches before turning the generator on. A wrench or a key that is left attached to a rotating part of the generator may result in personal injury.
- Do not overreach. Keep proper footing and balance at all times.
- Use safety equipment. Always wear eye protection. Wear ANSI approved safety impact eye goggles. Dust mask, non-skid safety shoes, hard hat, or hearing protection must be used for appropriate conditions.
- Do not force the generator. Use the correct generator for your application. The correct generator will do the job better and safer at the rate for which it is designed.
- Do not use the generator if the power switch does not turn it on or off. Any generator that cannot be controlled with the power switch is dangerous and must be replaced.

Generator Use and Care

Make sure the power switch is in its “OFF” position and disconnect the spark plug wire before making any adjustment, changing accessories, or storing the generator. Such preventive safety measures reduce the risk of starting the generator accidentally.

Store idle generators out of reach of children and other untrained persons. Generators are dangerous in the hands of untrained users.

Maintain generators with care. Do not use damaged generator. Tag damaged generators “Do not use” until repaired.

Check for misalignment or binding of moving parts, breakage of parts, and any other condition that may affect the generator’s operation. If damaged, have the generator serviced before using. Many accidents are caused by poorly maintained generators.

Use only accessories that are recommended by the manufacturer for your model. Accessories that may be suitable for one generator may become hazardous when used on another generator.

Owner ' s Manual

General Precautions (cont'd)

Servicing

Maintain labels and name plates on the generator and engine. These carry important information. If unreadable or missing, contact All Power America immediately for a replacement.

Generator service must be performed only qualified repair personnel. Service or maintenance performed by unqualified personnel could result in a risk of injury.

When servicing a generator, use only identical replacement parts. Follow all appropriate instructions in this manual. Use of unauthorized parts or failure to follow maintenance instructions may create a risk of electric shock or injury.

Heart Pacemakers



WARNING! PEOPLE WITH PACEMAKERS SHOULD CONSULT THEIR PHYSICIAN(S) BEFORE USING THIS PRODUCT. ELECTROMAGNETIC FIELDS IN CLOSE PROXIMITY TO A HEART PACEMAKER COULD CAUSE INTERFERENCE TO OR FAILURE OF THE PACEMAKER.

Installation

- Ensure installation meets all applicable safety, and local and national electrical codes. Have installation performed by a qualified, licensed electrician and building contractor.
- All electrical work, including the earth-ground connection, should be completed by a licensed electrician.
- Any separate fuel storage or generator supply facility must be built or installed in full compliance with all relevant local, state, and federal regulations.

2000W Generator

General Precautions (cont'd)

Installation (cont'd)

- If the generator is installed outdoors, it must be weatherproofed and should be soundproofed. It should not be run outdoors without protection to the generator and wiring conduit.
- The generator weighs 48 lbs. Two or more people should assist when moving or lifting this product. Never lift the generator using the engine or alternator lifting lugs. Connect lifting equipment to the frame of the generator
- Before lifting the generator, ensure the lift rigging and supporting structure are in good condition, and are rated to lift such a load.
- Keep all personnel away from the suspended generator during relocating.
- The supporting floor/ground surface should be level and strong enough to safely hold the weight of the generator. If the floor/grounded surface is not level, strong cross members should be placed under the full length of the generator frame at its low side.
- For trailer installation, the generator should be mounted on the center point of the trailer, over the wheels. The trailer must be capable of supporting the weight of the generator and all contents (tools, etc.)
- Install sound-and weather-proofing only when it is not raining or snowing to avoid trapping moisture within the generator's area.

Mechanical

- Always make sure the power switch is in its "OFF" position. Disconnect the spark plug wire, and allow the engine to completely cool before carrying out maintenance.
- Check for damaged parts. Before using the generator, any part that appears damaged should be carefully checked to determine that it will operate properly and perform its intended function. Check for alignment and binding of moving parts, any broken parts or mounting fixtures, and any other condition that may affect proper operation technician.
- The generator is designed with guards for protection from moving parts. In any case, care must still be taken to protect personnel and equipment from other mechanical hazards when working around the generator.

Owner ' s Manual

General Precautions (cont'd)

Mechanical (cont'd)

- Do not operate the generator with safety guards removed. While the generator is running, do not attempt to reach around the safety guard for maintenance or any other reason.
- Keep hands, arms, long hair, loose clothing, and jewelry away from moving parts. Be aware that when engine parts are moving fast they cannot be seen clearly.
- Keep access doors on enclosures closed and locked when access is not required.
- When working on or around the generator always wear protective clothing including ANSI approved safety gloves, safety eye goggles, and safety hat.
- Do not alter or adjust any part of the generator that is assembled and supplied by the manufacturer.
- Always follow and complete scheduled engine and generator maintenance.

Chemicals

- Avoid contact with hot fuel, oil, exhaust fumes, and hot solid surfaces.
- Avoid body contact with fuels, oils, and lubricants used in the generator. If swallowed, seek medical treatment immediately. Do not induce vomiting if fuel is swallowed. For skin contact, immediately wash with soap and water. For eye contact, immediately flush eyes with clean water and seek medical attention.

Noise

- Prolonged exposure to noise levels above 85 DBA is hazardous to hearing. Always wear ANSI approved ear protection when operating or working around the generator when it is running.

2000W Generator

General Precautions (cont'd)

Extension Cord

If an extension cord (not included) is used, make sure to use only UL approved cords having the correct gauge and length according to the following table:

Nameplate Amps (@ full load)		Cord Lengths			
		0'-50'	50'-100'	100'-150'	150'-200'
0 - 5	16 AWG	16 AWG	12 AWG	12 AWG	
5.1 - 8	16 AWG	14 AWG	10 AWG	-	
8.1 - 12	14 AWG	12 AWG	-	-	

Owner ' s Manual

Battery

This product does not need a battery.

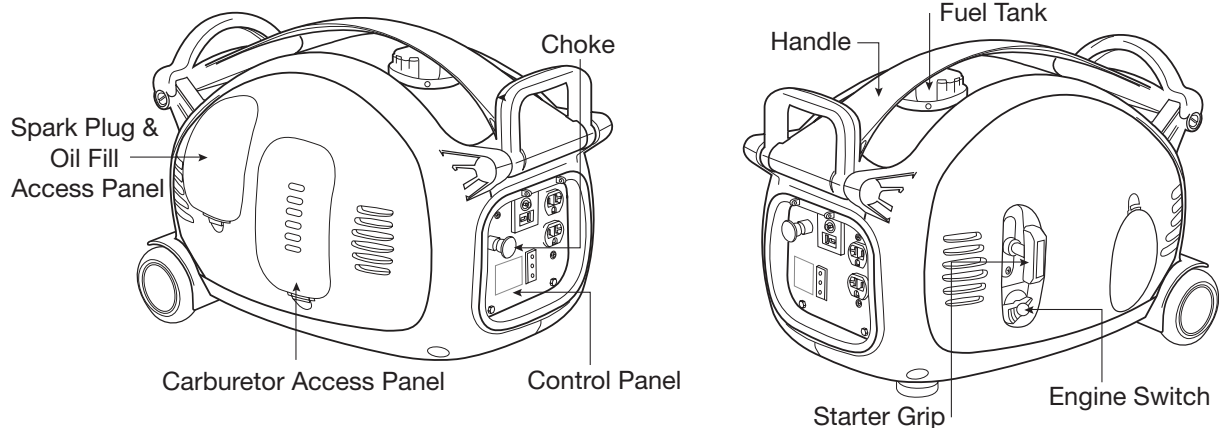
2000W Generator

Assembly

No assembly required for this product.

Owner's Manual

Operation



NOTE: THE PARTS LISTED ABOVE ARE HELPFUL FOR LOCATING THE CONTROLS MENTIONED BELOW.



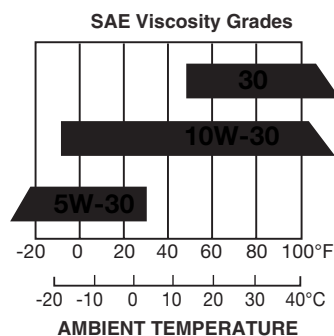
CAUTION: Prior To First Using The Generator, The Engine Must Be Filled With A High Quality Sae 10w-30 Grade Engine Oil. To Do So Unscrew And Remove The Engine's Oil Dipstick Located At The Bottom Of The Engine Crankcase. Fill The Engine's Crankcase Until The Oil Level Is Level With The Upper Marked Line On The Dipstick. Then, Screw The Dipstick Back Into The Oil Fill Hole.



ENGINE OIL RECOMMENDATIONS

Oil is a major factor affecting performance and service life. Use 4-stroke automotive detergent oil.

SAE 10W 30 is recommended for general use. Other viscosities shown in the chart may be used when the average temperature in your area is within the recommended range.



Before Starting the Generator

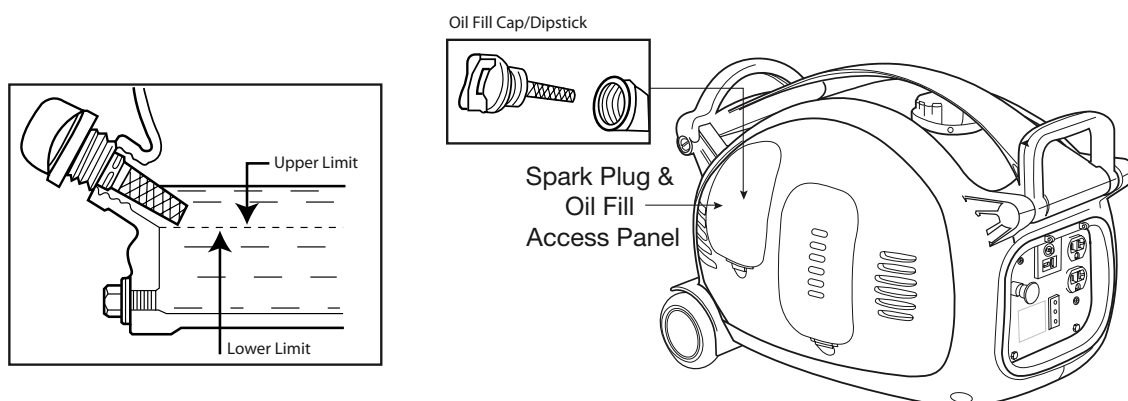
1. Check that the engine power switch is in its "OFF" position (see diagram on next page).
2. Before the first use, remove the fuel tank cap and fill the fuel tank with unleaded gasoline. When fueling, be sure that the fuel strainer is in place. Replace the fuel tank cap. Thereafter, check the engine's fuel gauge for the amount of unleaded gasoline in the fuel tank. If necessary, refill the fuel tank with unleaded gasoline. The generator must be turned off and cooled down before refilling the fuel tank.

2000W Generator

Operation (cont'd)

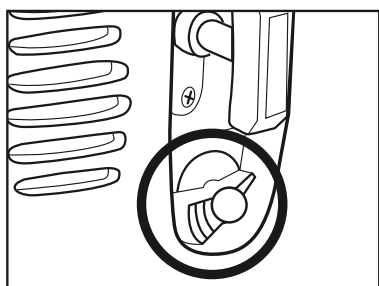
STARTING THE GENERATOR

- 1) Make sure generator has oil before you start. (see illustration below)

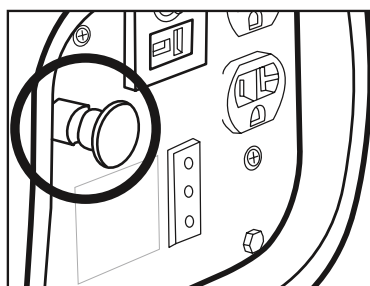


- 2) Make sure generator has fuel before you start.

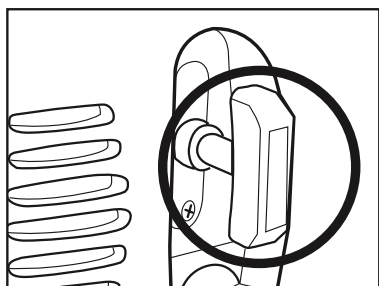
- 3) Turn the fuel valve to the "ON" position



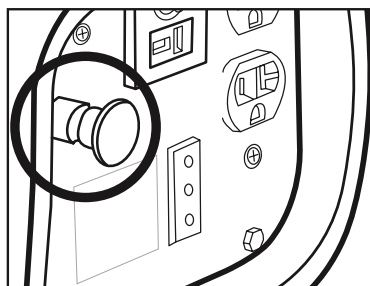
- 4) Pull the choke out to the "START" position.



- 5) Pull the pull start until you feel some tension, then pull swiftly until generator starts.



- 6) Push in the choke to the "RUN" position.



Owner ' s Manual

Operation (cont'd)

Powering 120 Volt AC Tools And Equipment:

1. Prior to powering tools and equipment, make sure the generator's rated voltage, and amperage capacity (120V/AC @ 13 AMPs) is adequate to supply all electrical loads that the unit will power. If powering exceeds the generator's capacity, it may be necessary to group one or more of the tools and/or equipment for connection to a separate generator.
2. Once the generator is running, simply connect the power cords of 120 volt AC powered tools and equipment into the 120 volt AC outlets.



NOTE: THE GENERATOR FEATURES AN OVERLOAD PROTECTION DEVICE WHICH WILL SHUT DOWN GENERATOR IF IT OVERLOADS. IF THIS OCCURS MAKE SURE TO DISCONNECT ALL ELECTRICAL POWER CORDS CONNECTED TO THE GENERATOR BEFORE YOU START GENERATOR.

3. Disconnect all electrical powered tools and equipment from the generator's 110/120 volt AC dual outlets.
4. After the engine and generator have completely cooled, store generator in a safe, clean, dry location (if not already installed).

2000W Generator

Operation (cont'd)

Powering 12 Volt DC tools and Equipment:

1. Prior to powering tools and equipment, make sure the generator's rated voltage, and amperage capacity (12V/DC @ 8.3 AMPs) is adequate to supply all electrical loads that the unit will power. If powering exceeds the generator's capacity, it may be necessary to group one or more of the tools and/or equipment for connection to a separate generator.
2. Connect the power cord of a 12V DC powered tool or equipment to the DC Terminals.
3. Start and run the engine as described above
4. When finished using the generator, turn the fuel valve to its "OFF" position. Turn the fuel valve to its "OFF" position.
5. Disconnect the electrical powered tools' power cord from the generator's DC terminals.
6. After the engine and generator have completely cooled, store the generator in a safe, clean, dry location (if not already installed in one).

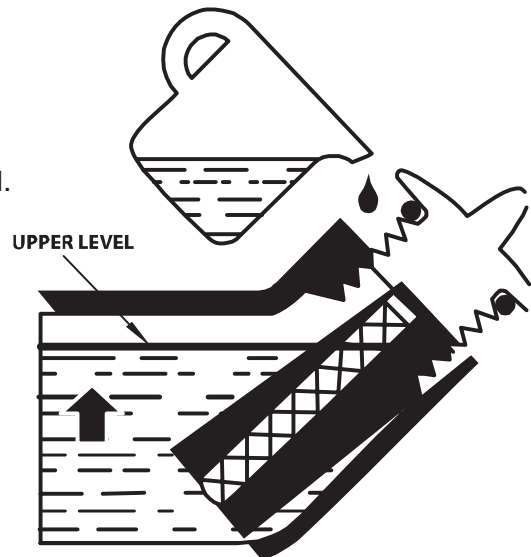
Owner ' s Manual

Inspection, Cleaning, and Maintenance



WARNING! ALWAYS MAKE SURE THE ENGINE POWER SWITCH IS IN ITS “OFF” POSITION. DISCONNECT THE SPARK PLUG WIRE FROM THE ENGINE. AND ALLOW SUFFICIENT TIME FOR THE ENGINE AND GENERATOR TO COMPLETELY COOL BEFORE PERFORMING ANY INSPECTIONS, MAINTENANCE, OR CLEANING.

- Before each use, inspect the generator. Check for:
 - Loose screws
 - Misaligned or binding moving parts
 - Cracked or broken parts
 - Damaged electrical wiring
 - Any other condition that may affect safe operation.
- If an engine problem occurs, have it checked by a qualified service technical before further use. Do not use damaged equipment.
- Before each use, make sure the engine’s oil and gas levels are adequate. If necessary, fill the crankcase until the oil level is even with the oil hill hole and/or fill the fuel tank.
- Before each use, remove all debris with a soft brush, rag, or vacuum.
- Lubricate all moving parts using a premium quality, lightweight machine oil.
- First 20 hours of use, drain the old engine oil and replace with high quality SAE 10W-30 grade engine oil. This is only required for the break-in period.
- Every 100 hours of use, change oil.
- For long term storage, either drain fuel into suitable container or add a fuel preservative/ stabilizer (not included) to prevent fuel breakdown.



Owner 's Manual

MAINTENANCE SCHEDULE

REGULAR SERVICE PERIOD (3)

Perform at every indicated month or operating hour interval, whichever comes first.		Each Use	First month or 20 Hrs.	Every 3 months or 50 Hrs.	Every 6 months or 100 Hrs.	Every year or 300 Hrs.
Engine Oil	Check level	○				
	Change		○		○	
Air filter	Check	○				
	Clean			○		
Sediment cup	Clean				○	
Spark plug	Check-adjust				○	
	Replace					○
Spark arrester	Clean				○	
Valve clearance	Check-adjust					○
Combustion chamber	Clean	After every 500 Hrs.				
Fuel tank and filter	Clean				○	
Fuel tube	Check	Every 2 years (Replace if necessary)				

- 1) Service more frequently when used in dusty areas.
- 2) These items should be serviced by your servicing dealer, unless you have the proper tools and are mechanically proficient.
- 3) For commercial use, log hours of operation to determine proper maintenance intervals.

2000W Generator

Installation

Electrical and other permits may be required for the installation of emergency power systems. Investigate your local building and electrical codes before installing this unit. Installation must be completed by licensed contractors.



WARNING! THE GENERATOR WEIGHS APPROXIMATELY 48 POUNDS. USE CARE AND THE PROPER LIFTING OR HOISTING EQUIPMENT WHEN MOVING IT TO THE INSTALLATION LOCATION. ALWAYS CONNECT HOIST LINES TO THE FRAME OF THE GENERATOR.

General Location

- Make sure to locate and install the generator outdoors where cooling air is readily available.
- Install the generator so that the air inlets and outlets are not blocked by obstructions such as bushes, trees, or snow drifts. Locating it in the path of heavy winds or snowdrifts may require the placement of a barrier for protection. In normal weather conditions, the air vent should face the prevailing wind direction.
- Install the generator on a concrete slab or other area where rain drainage or flood waters can not reach it.
- Generator placement should allow four feet of access to all sides for maintenance.
- Place the generator as close as possible to the electrical tools and equipment being powered to reduce the length of extension cords.

Owner 's Manual

Installation (cont'd)

Supporting and Mounting

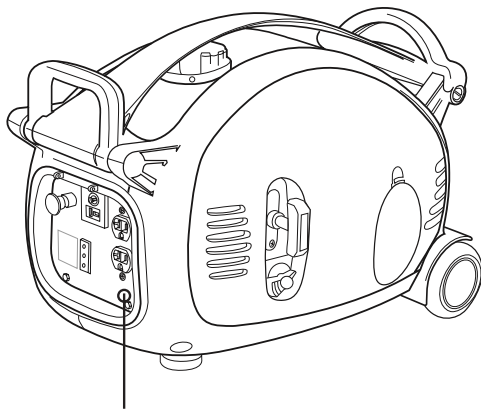
Mount the generator on a concrete slab capable of supporting the weight of the generator. The slab must extend on all sides beyond the frame by at least one foot. Contact a cement contractor for slab specifications if necessary. Attach the frame to the concrete slab using 3/8" diameter expansion anchor bolts (not supplied).

Grounding

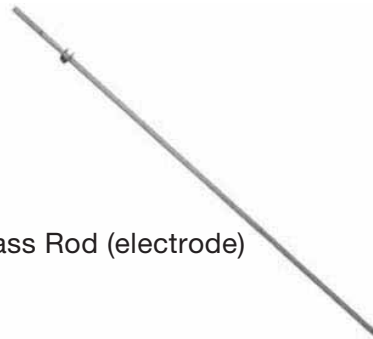


NOTE: IT IS RECOMMENDED THAT ONLY A TRAINED AND LICENSED ELECTRICIAN PERFORM THIS PROCEDURE

Connect a #6 AWG grounding wire (not included) from the ground connector on the generator power panel (picture below) to a grounding rod (picture below). It must be driven at least 24" deep into the earth (Soil). The grounding rod must be an earth-driven copper or brass (electrode) which can adequately ground the generator.



Connect Grounding Wire Here



Brass Rod (electrode)

2000W Generator

Specifications (APG3102 & APG3102C)

AC electrical

Current output	120V AC @ 13A,60Hz
Continuous/rated wattage	1600
Peak wattage	2000
Outlets	Two 120V AC with 3-spring grounded

DC electrical

Current output	12V DC @ 8.3A
----------------	---------------

Gasoline engine

Horse power	3
Type	4 stroke,OHV,air cooled,recoil start
Displacement	
Oil Capacity	0.63quart (0.6 liters)
Approved	SP-GG200D-EPA

Fuel

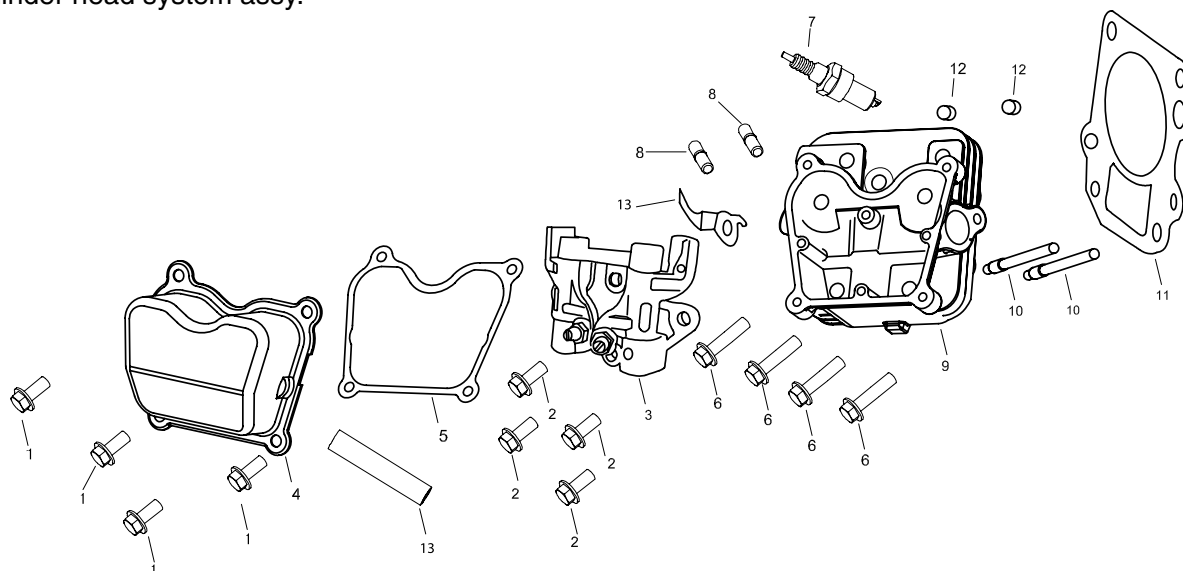
Type	Unleaded gasoline
Capacity	0.814 Gallons (3.081 Liters)
Running time @ 3.081L Fuel	4 hour
Fuel gauge	Not included

Weight

Net Weight	48lbs
------------	-------

2000W Generator

Cylinder head system assy.

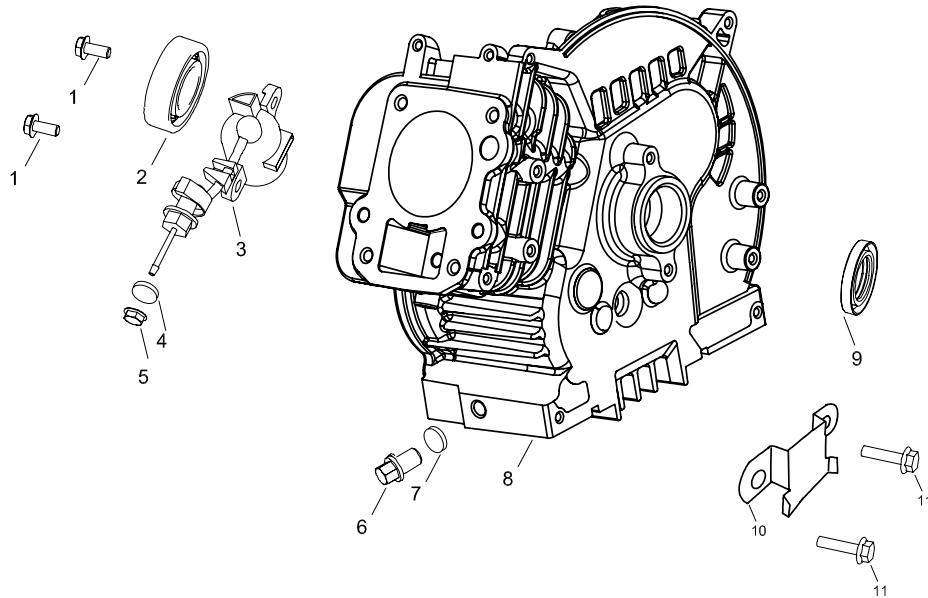


A

APA Part No.	Description	Part. No
APG3102-A-01-JD	HEAD COVER COMP. BOLT	JF156-A-01
APG3102-A-02-JD	FLANGE BOLT (M6X 16)	JF156-A-02
APG3102-A-03-JD	ROCKER ARM ASSY.	JF156-A-03
APG3102-A-04-JD	HEAD COVER COMP.	JF156-A-04
APG3102-A-05-JD	HEAD COVER PACKING	JF156-A-05
APG3102-A-06-JD	FLANGE BOLT (M8X 55)	JF156-A-06
APG3102-A-07-JD	SPARK PLUG	JF156-A-07
APG3102-A-08-JD	EXHAUST PIPE STUD BOLT	JF156-A-08
APG3102-A-09-JD	CYLINDER HEAD COMP.	JF156-A-09
APG3102-A-10-JD	CARBURETOR STUD BOLT	JF156-A-10
APG3102-A-11-JD	CYLINDER HEAD SEALING PAD	JF156-A-11
APG3102-A-12-JD	DOWEL PIN (?10x?12x20)	JF156-A-12
APG3102-A-13-JD	AIR CLEANER STAY	JF156-A-13

2000W Generator

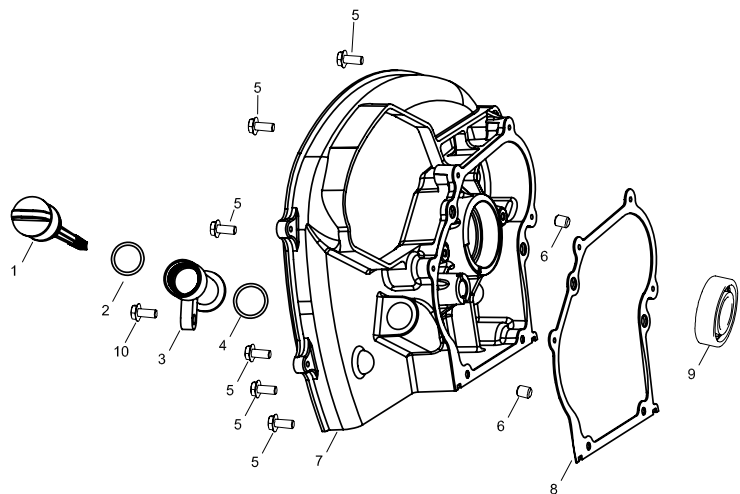
Cylinder barrel



APA Part No.	Description	Part. No
APG3102-B-01-JD	FLANGE BOLT (M6X 16)	JF156-B-01
APG3102-B-02-JD	BALL BEARING (6203)	JF156-B-02
APG3102-B-03-JD	OIL LEVEL SWITCH ASSY.	JF156-B-03
APG3102-B-04-JD	O-RING (14mm)	JF156-B-04
APG3102-B-05-JD	FLANGE NUT (M10)	JF156-B-05
APG3102-B-06-JD	DRAIN PLUG BOLT	JF156-B-06
APG3102-B-07-JD	DRAIN PLUG WASHER	JF156-B-07
APG3102-B-08-JD	CRANK CASE	JF156-B-08
APG3102-B-09-JD	OIL SEAL (?17x?30x6)	JF156-B-09
APG3102-B-10-JD	CORD CLAMPER	JF156-B-10
APG3102-B-11-JD	FLANGE BOLT (M6X12)	JF156-B-11

2000W Generator

Crankcase cover system assy.



C

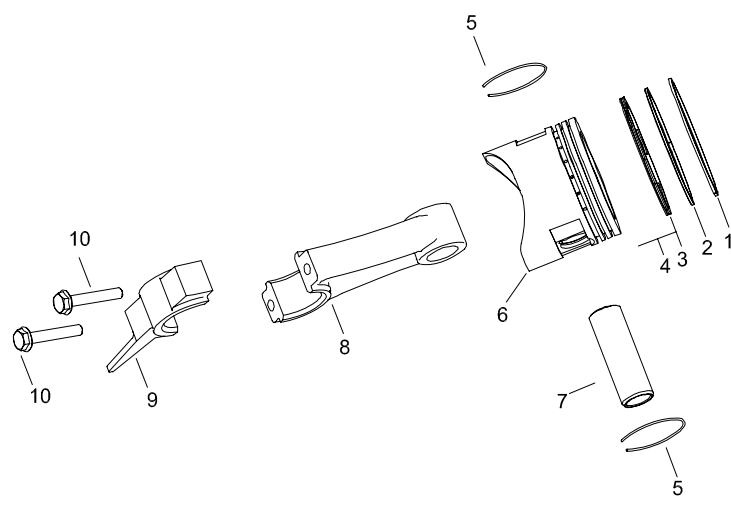
APA Part No.	Description	Part. No
APG3102-C-01-JD	OIL SCALE	JF156-C-01
APG3102-C-02-JD	OIL SCALE SEAL RING	JF156-C-02
APG3102-C-03-JD	OIL SCALE GOD	JF156-C-03
APG3102-C-04-JD	OIL SCALE SEAL RING	JF156-C-04
APG3102-C-05-JD	FLANGE BOLT (M6X25)	JF156-C-05
APG3102-C-06-JD	DOWEL PIN	JF156-C-06
APG3102-C-07-JD	CRANKCASE COVER	JF156-C-07
APG3102-C-08-JD	CRANKCASE COVER PAD	JF156-C-08
APG3102-C-09-JD	BALL BEARING (6303)	JF156-C-09
APG3102-C-10-JD	FLANGE BOLT (M6X16)	JF156-C-10

Crankshaft system assy.

29

2000W Generator

Piston and connecting rod system assy.



E

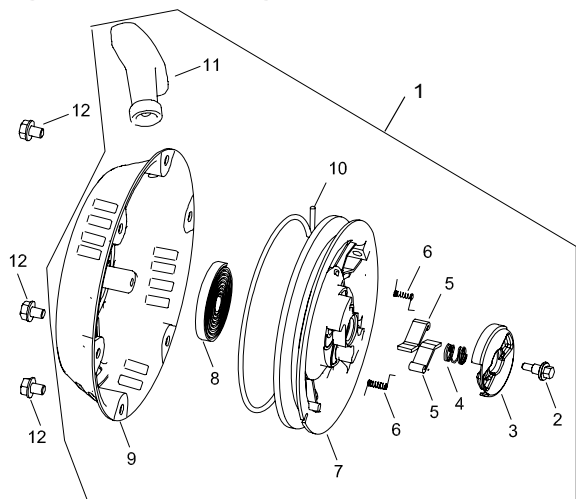
APA Part No.	Description	Part. No
APG3102-E-01-JD	COMPRESSION RING A	JF156-E-01
APG3102-E-02-JD	COMPRESSION RING B	JF156-E-02
APG3102-E-03-JD	OIL RING A	JF156-E-03
APG3102-E-04-JD	OIL RING B	JF156-E-04
APG3102-E-05-JD	PISTON PIN CLIP	JF156-E-05
APG3102-E-06-JD	PISTON	JF156-E-05
APG3102-E-07-JD	PISTON PIN	JF156-E-06
APG3102-E-08-JD	CONNECTING ROD	JF156-E-07
APG3102-E-09-JD	CONNECTING COVER	JF156-E-08
APG3102-E-10-JD	CONNECTING ROD BOLT	JF156-E-09

Camshaft Valve system assy.

[illegible]

2000W Generator

Recoil starter system assy.



G

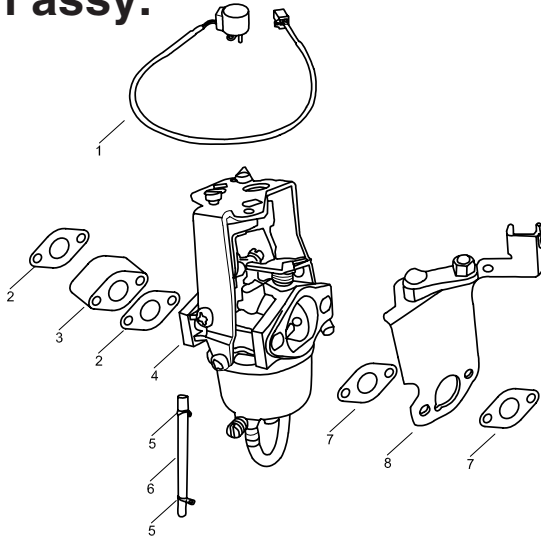
APA Part No.	Description	Part. No
APG3102-G-01-JD	RECOIL STARTER ASSY.	JF156-G-01
APG3102-G-02-JD	SETTING SCREW	JF156-G-02
APG3102-G-03-JD	SPRING RETAINER	JF156-G-03
APG3102-G-04-JD	PLATEN SPRING	JF156-G-04
APG3102-G-05-JD	STARTER DETENT	JF156-G-05
APG3102-G-06-JD	DETENT SPRING	JF156-G-06
APG3102-G-07-JD	RECOIL STARTER REEL	JF156-G-07
APG3102-G-08-JD	START RETURN SPRING	JF156-G-08
APG3102-G-09-JD	RECOIL STARTER CASE COMP.	JF156-G-09
APG3102-G-10-JD	RECOIL STARTER ROPE	JF156-G-10
APG3102-G-11-JD	STARTER KNOB	JF156-G-11
APG3102-G-12-JD	FLANGE BOLT (M6X8)	JF156-G-12

Fan cover system assy.

33

2000W Generator

Carburetor system assy.

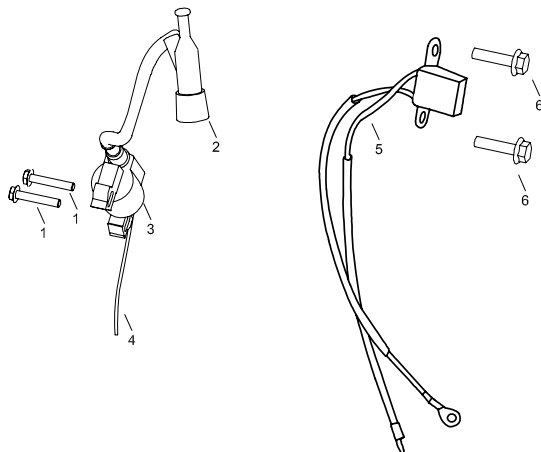


APA Part No.	Description	Part. No
APG3102-I-01-JD	STEPPER MOTOR	JF156-I-01
APG3102-I-02-JD	INTAKE PIPE GASKET	JF156-I-02
APG3102-I-03-JD	CARBURETOR INSULATING PLATE	JF156-I-03
APG3102-I-04-JD	CARBURETOR ASSY.(FOR APG3102)	JF156-I-04
APG3102C-I-04-JD	CARBURETOR ASSY.(FOR APG3102C)	JF156-I-04
APG3102-I-05-JD	TUBE CLIP	JF156-I-05
APG3102-I-06-JD	TUBE	JF156-I-06
APG3102-I-07-JD	CARBURETOR IRON GASKET	JF156-I-07
APG3102-I-08-JD	BREAKER	JF156-I-08

Flywheel system Assy.

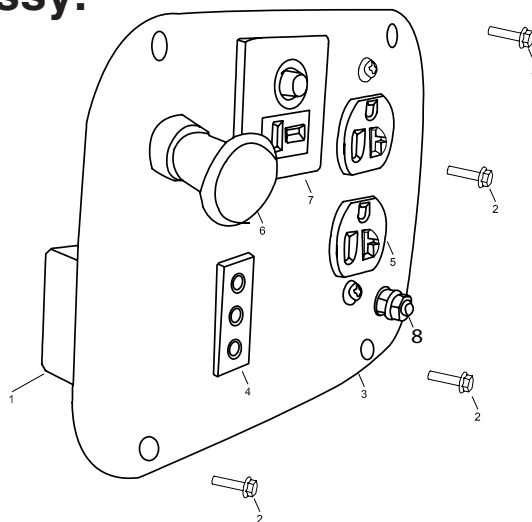
35

Ignition System Assy.



K

Control box assy.



L

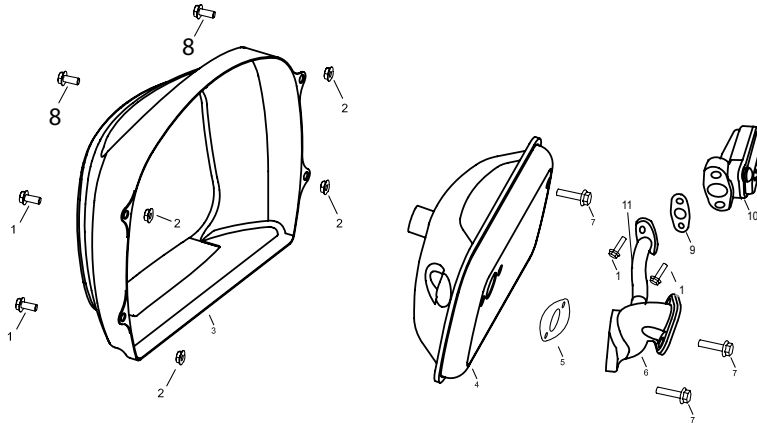
37

TRANSDUCER ASSY.

38

2000W Generator

Muffler System Assy.



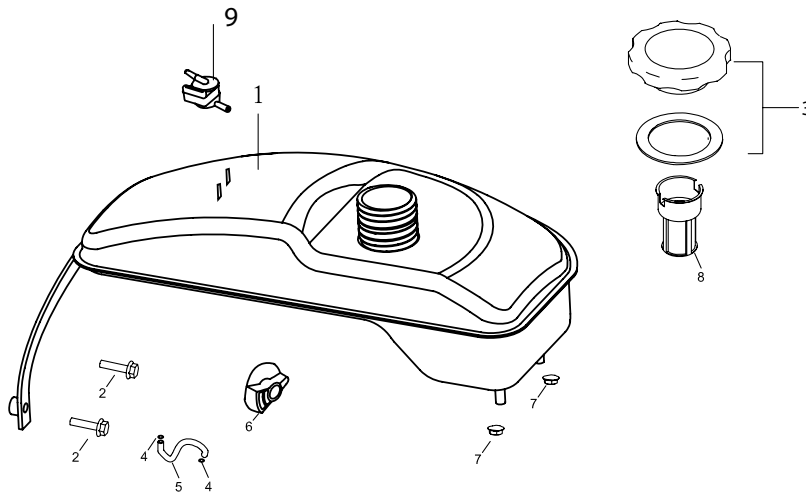
N

APA Part No.	Description	Part. No
APG3102-N-01-JD	FLANGE BOLT (M6X12)	JF156-N-01
APG3102-N-02-JD	FLANGE NUT (M6)	JF156-N-02
APG3102-N-03-JD	MUFF. OUTER PROTECTOR	JF156-N-03
APG3102-N-04-JD	MUFFLER COMP.(APG3102 ONLY)	JF156-N-04
APG3102C-N-04-JD	MUFFLER COMP.	JF156-N-04B
APG3102-N-05-JD	EX. PIPE GASKET	JF156-N-05
APG3102-N-06-JD	EX PIPE COMP.	JF156-N-06
APG3102-N-07-JD	MUFFLER COMP,	JF156-N-07
APG3102-N-08-JD	FLANGE BOLT (M6X25)	JF156-N-08
APG3102C-N-09-JD	GASKET (APG3102 C ONLY)	JF156-N-09
APG3102C-N-10-JD	AIR VALVE (APG3102 C ONLY)	JF156-N-10
APG3102C-N-11-JD	AIR PIPE (APG3102 C ONLY)	JF156-N-11

Air cleaner

40

Fuel tank system assy.



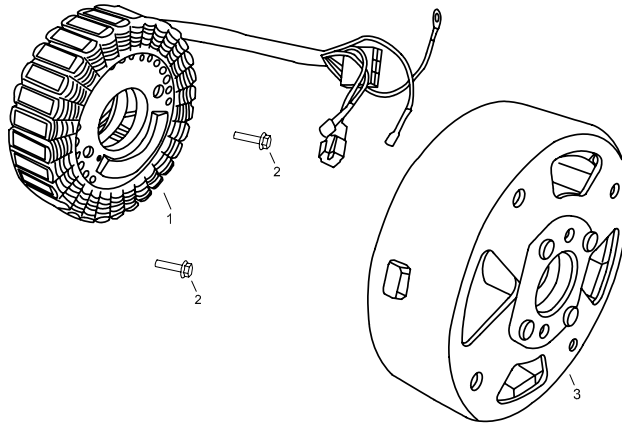
P

APA Part No.	Description	Part. No
APG3102-P-01-JD	FUEL TANK COMP. (FOR APG3102)	JF156-P-01
APG3102C-P-01-JD	FUEL TANK COMP.(FOR APG3102C)	JF156-P-01B
APG3102-P-02-JD	FLANGE BOLT	JF156-P-02
APG3102-P-03-JD	FUEL FILLER CAP COMP (FOR APG3102)	JF156-P-03
APG3102C-P-03-JD	FUEL FILLER CAP COMP (FOR APG3102C)	JF156-P-03B
APG3102-P-04-JD	TUBE CLIP	JF156-P-04
APG3102-P-05-JD	FUEL TUBE	JF156-P-05
APG3102-P-06-JD	FUEL SWITCH	JF156-P-06
APG3102-P-07-JD	FLANGE NUT (M6)	JF156-P-07
APG3102-P-08-JD	FUEL FILTER	JF156-P-08
APG3102C-P-09-JD	OVERFLOW VALVE	JF156-P-09

Shroud assy.

42

Generator assy.

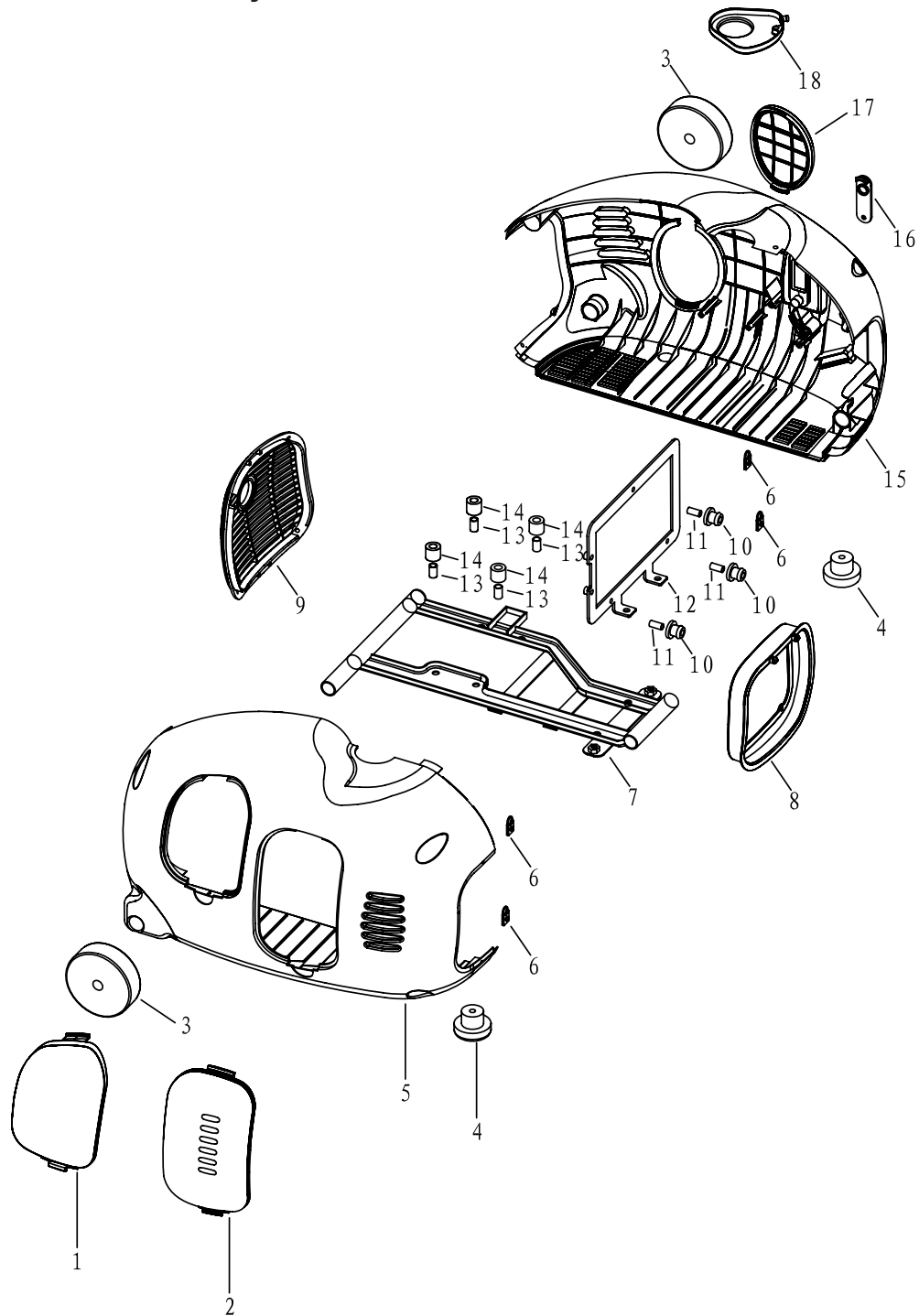


R

[illegible]

2000W Generator

Enclosure Assembly



S

2000W Generator

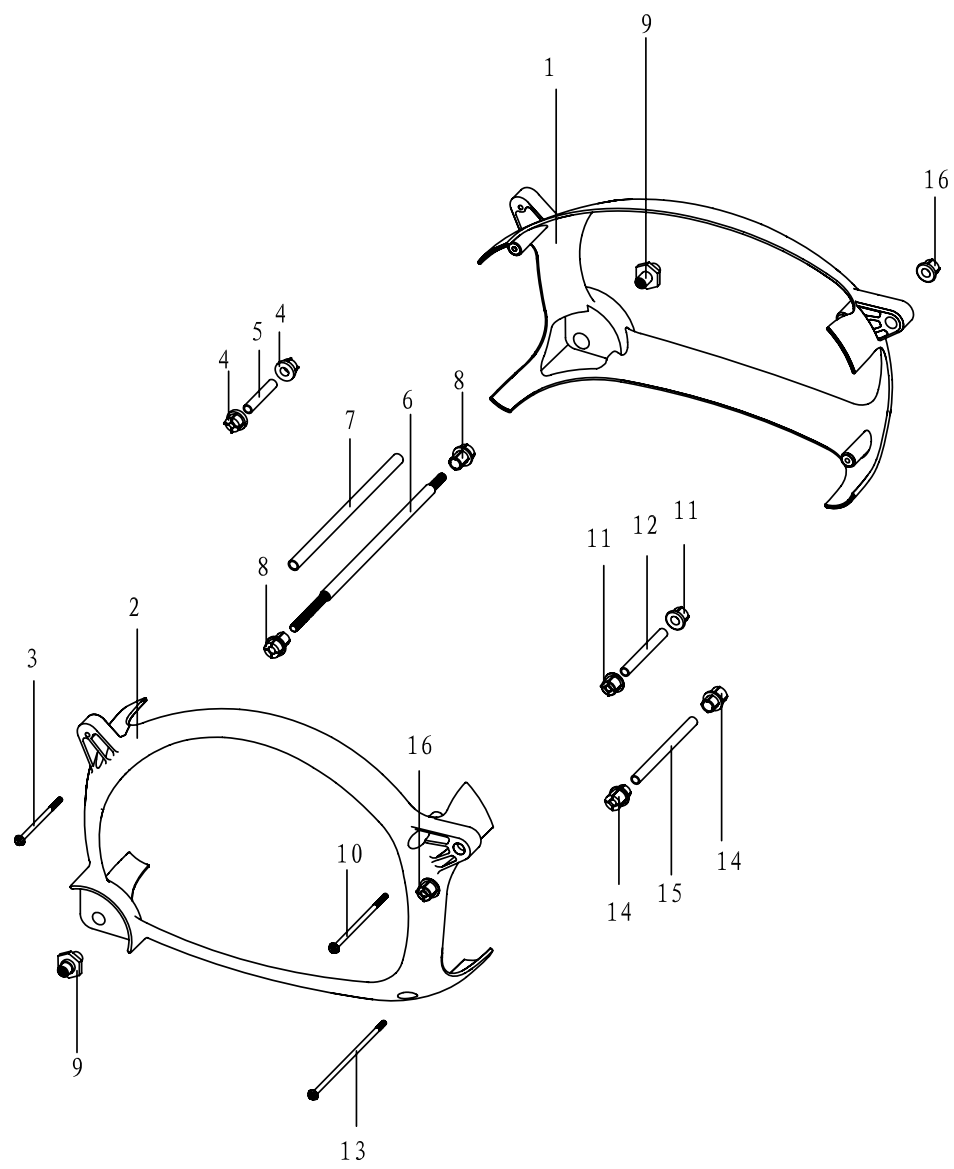
Enclosure Assembly

S

APA Part No.	Description	Part. No
APG3102-S-01-JD	COVER BOARD A	JF156-S-01
APG3102-S-02-JD	COVER BOARD B	JF156-S-02
APG3102-S-03-JD	MOBILE WHEEL	JF156-S-03
APG3102-S-04-JD	BOTTOM RUBBER	JF156-S-04
APG3102-S-05-JD	ENCLOSURE(LEFT)	JF156-S-05
APG3102-S-06-JD	RUBBER CAP	JF156-S-06
APG3102-S-07-JD	BASE PLATE	JF156-S-07
APG3102-S-08-JD	FRONT COVER	JF156-S-08
APG3102-S-09-JD	REAR COVER	JF156-S-09
APG3102-S-10-JD	SHOCK ABSORPTION PAD	JF156-S-10
APG3102-S-11-JD	BUSHING	JF156-S-11
APG3102-S-12-JD	TRANSDUCER MOUNTING FRAME	JF156-S-12
APG3102-S-13-JD	BUSHING	JF156-S-13
APG3102-S-14-JD	SHOCK ABSORPTION PAD	JF156-S-14
APG3102-S-15-JD	ENCLOSURE(RIGHT)	JF156-S-15
APG3102-S-16-JD	PULLING CORD SUPPORT	JF156-S-16
APG3102-S-17-JD	COVER BOARD C	JF156-S-17
APG3102-S-18-JD	SPILLED FUEL COLLECTION PLATE	JF156-S-18

2000W Generator

Frame Assembly



T

2000W Generator

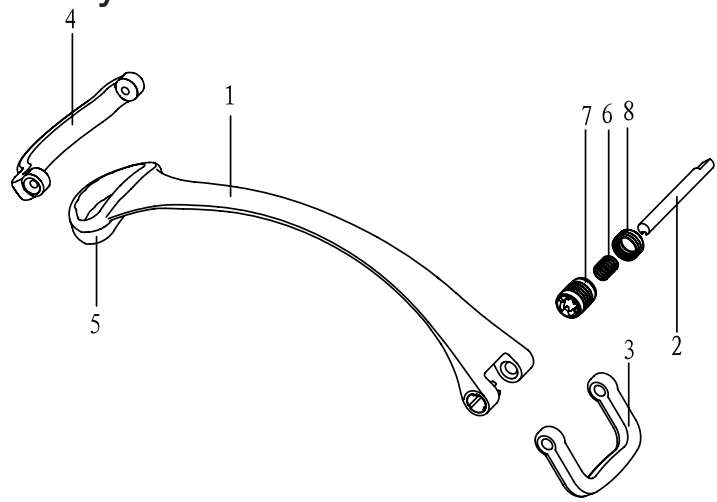
Frame Assembly

T

APA Part No.	Description	Part. No
APG3102-T-01-JD	SUPPORT FRAME(RIGHT)	JF156-T-01
APG3102-T-02-JD	SUPPORT FRAME(LEFT)	JF156-T-02
APG3102-T-03-JD	BOLT(M6 x 105)	JF156-T-03
APG3102-T-04-JD	SHOCK ABSORPTION PAD	JF156-T-04
APG3102-T-05-JD	BUSHING	JF156-T-05
APG3102-T-06-JD	WHEEL SHAFT	JF156-T-06
APG3102-T-07-JD	SHAFT BUSHING	JF156-T-07
APG3102-T-08-JD	SHOCK ABSORPTION	JF156-T-08
APG3102-T-09-JD	NUT	JF156-T-09
APG3102-T-10-JD	BOLT(M6 x 135)	JF156-T-10
APG3102-T-11-JD	SHOCK ABSORPTION PAD	JF156-T-11
APG3102-T-12-JD	BUSHING	JF156-T-12
APG3102-T-13-JD	BOLT(M6 x 185)	JF156-T-13
APG3102-T-14-JD	SHOCK ABSORPTION PAD	JF156-T-14
APG3102-T-15-JD	BUSHING	JF156-T-15
APG3102-T-16-JD	NUT	JF156-T-16

2000W Generator

Handle Assembly



U

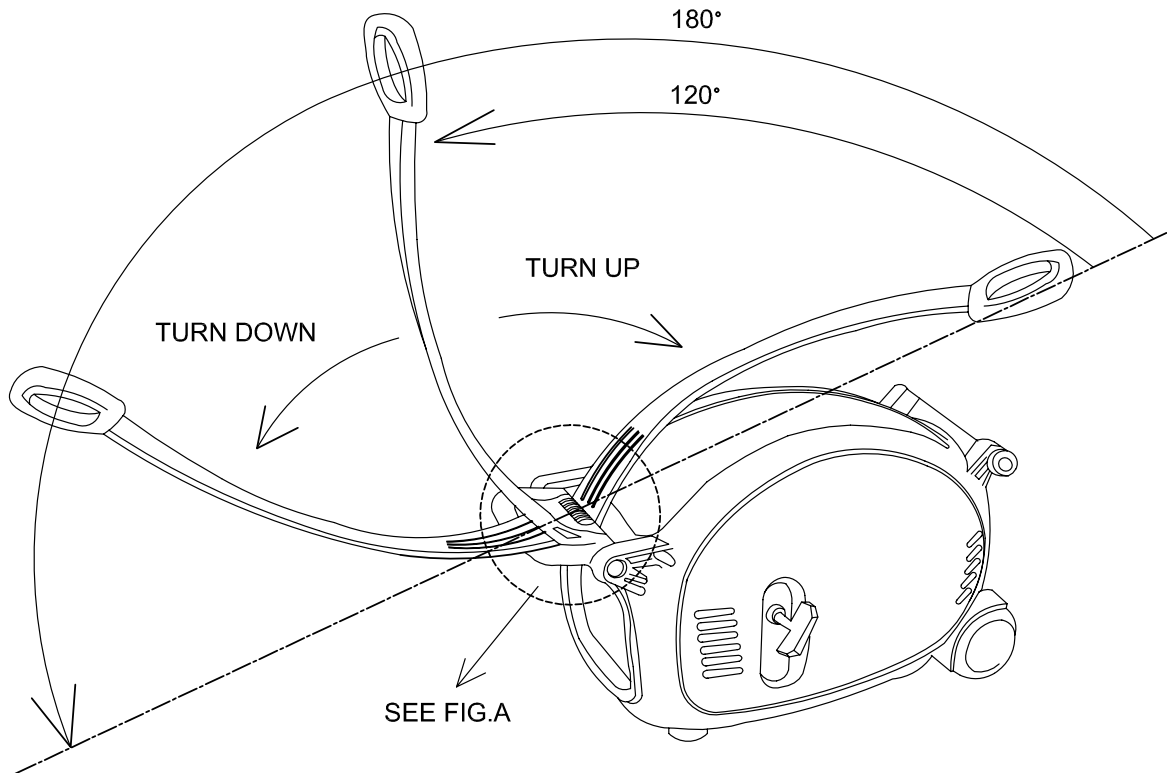
APA Part No.	Description	Part. No
APG3102-U-01-JD	ARCHED HANDLE	JF156-U-01
APG3102-U-02-JD	HANDLE AXES	JF156-U-02
APG3102-U-03-JD	“U” HANDLE	JF156-U-03
APG3102-U-04-JD	“C” HANDLE	JF156-U-04
APG3102-U-05-JD	“D” HANDLE	JF156-U-05
APG3102-U-06-JD	REPLACEMENT SPRING	JF156-U-06
APG3102-U-07-JD	RUBBER BUSHING	JF156-U-07
APG3102-U-08-JD	RACHET BUSHING	JF156-U-08

Carbon Canister assy. (APG3102 ONLY)

49

2000W Generator

MOBILE HANDLE



You could turn the handle on a convenient angle for moving product.

FOR TURN DOWN : You could turn down the handle directly .

FOR TURN UP : You should push the locking block to RIGHT side ,
and then turn up the handle.

Release it when you get the expectative angle .

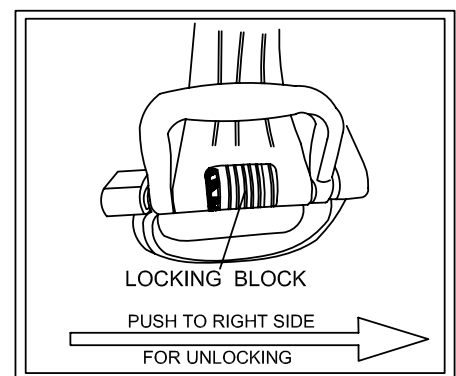


FIG.A