

BLUETOOTH INTERFACE FOR SELECT 2002-UP MAZDA VEHICLES

BEEMZ-30

IMPORTANT: NOT COMPATIBLE WITH PREMIUM SOUND SYSTEMS (AMPLIFIED SYSTEMS)

APPLICATIONS

- Mazda**
- 2011 - 2012 Mazda2
 - 2004 - 2011 Mazda3
 - 2012 - 2014 Mazda3*
 - 2006 - 2010 Mazda5
 - 2012 - 2014 Mazda5*
 - 2003 - 2011 Mazda6
 - 2006 - 2011 MX-5 Miata
 - 2004 - 2011 RX-8
 - 2002 - 2006 MPV
 - 2007 - 2011 Speed3
 - 2006 - 2007 Speed6
 - 2007 - 2011 CX-7
 - 2007 - 2011 CX-9
 - 2008 - 2011 Tribute

Notes:

*Important: These applications require the installer to place a Diode on the 24-Pin White harness, from the Crux T-Harness. See slip sheet included in the Manual for further information & instructions.

**2008-2010 Tribute requires a different harness: Crux Part Number 3196; must be special ordered.

We recommend reading this installation guide first before starting any work. Following these instructions from "Start" to "Finish" will ensure a smooth and hassle free installation. We offer telephone support M-F 9:00 AM - 5:00PM PDT at 1 (855) 822-1348. We are here to help.

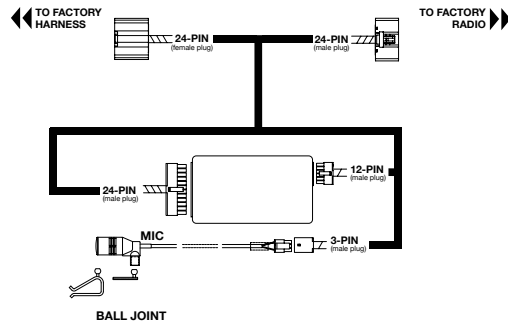
PRELIMINARY:

- Disconnect the positive(+) battery cable for radios that are non-navigation. Radios that are navigation ready should not disconnect the battery cable. Please use caution when installing. Do not install the interface near or on the vehicle's HVAC system. This will prevent overheating and condensation build up.
- Determine the proper installation method for your specific vehicle. Use overview to help you determine installation method.

INSTALLATION

1. Remove the factory radio to gain access to the factory radio wiring connectors.
2. Disconnect the factory connectors from the rear of the factory radio.
3. Connect the male connectors of the interface power harness into the factory radio.
4. Reconnect the factory connectors into the mating connectors of the interface harness.
5. Connect the male 3-pin connector into the pigtail connector.
6. Route the microphone to a desired location, (for example near the rear view mirror).
7. Re-install a factory radio back into the vehicle's dash.

FIG. 1 (Multi-PIN CONNECTORS):



MOUNTING THE MICROPHONE

1. Insert the mounting clip into the ball joint on the microphone.
2. Mount the clip on your visor or near the rear view mirror.
3. Route the remaining cable along the edge of the roof liner and towards the back of the radio, hiding the cable from sight.

INITIAL PAIRING TO THE VOICE PROMPTS:

1. READY (POWER ON)
2. SEARCHING PHONES (FOR PREVIOUS PAIRED PHONES)
3. PLEASE SEARCH AND SELECT THE "BEE LINE" DEVICE FROM MOBILE PHONE AND ENTER "0000".
4. YOU ARE NOW READY TO USE THE HF SYSTEM.

Note: The Bluetooth interface will remember up to the last 8 devices.

Note: If pairing is unsuccessful after several attempts power off then power back on to re-attempt, if unsuccessful please contact our tech support line.

AUTO RE-CONNECT:

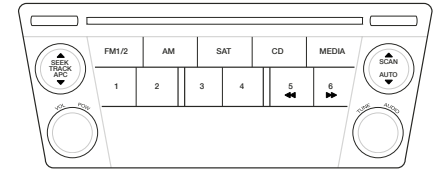
1. The BEEMZ-30 module will automatically re-connect the a previously paired mobile phone when the ignition is turned "ON" to the vehicle and the mobile phone's Bluetooth feature is also on.

Note: The Bluetooth module will re-connect with the last mobile phone's it was paired with. If no mobile phone is not found, it will revert to the pairing process.

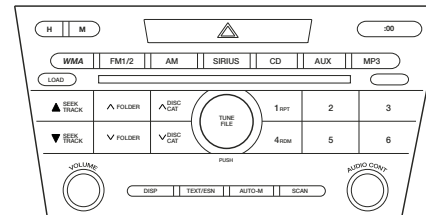
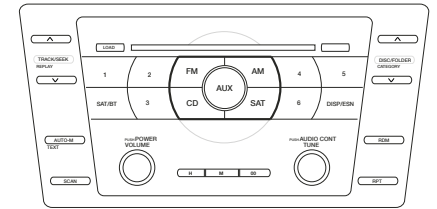
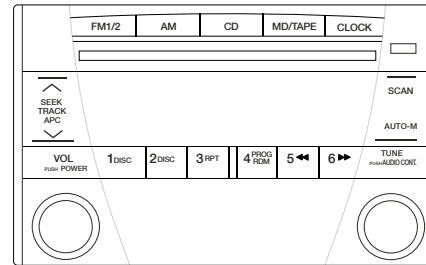
Note: If an incoming call is answered from the mobile phone's keypad, the call will direct itself to the headset on the mobile phone. To re-direct the phone call to the Crux interface, it must be done directly from the mobile phone.

Note: When transferring a phone call to the mobile phone for privacy, the user must re-connect the Crux interface and the mobile phone by selecting the module from the device menu on the phone.

Note: If after ending a call the radio is powered "OFF", you must power "ON" the radio to regain volume control.



SUPPORTED RADIOS



USING THE STEERING WHEEL CONTROL BUTTONS

VOICE DIAL	HOLD SEEK DN FOR 2 SECONDS
ANSWER	PRESS SEEK UP BUTTON ONCE
END A CALL	PRESS SEEK DN BUTTON ONCE
REJECT	PRESS SEEK DN BUTTON ONCE
ANSWER SECOND CALL	PRESS SEEK UP BUTTON ONCE
SWITCH BETWEEN CALLS	PRESS SEEK UP BUTTON ONCE
INCREASE VOLUME	PRESS VOLUME UP ONCE
DECREASE VOLUME	PRESS VOLUME DN ONCE
PRIVACY MODE	PRESS SEEK UP ONCE

Note: Premium Audio Systems need to "Turn On" the radio for hands-free audio to be heard.

All features of this module may vary by mobile phone manufacturer. For questions on your mobile phone's features, please reference the mobile phone's user manual for information.

BLUETOOTH INTERFACE FOR SELECT 2002-UP MAZDA VEHICLES

IMPORTANT: NOT COMPATIBLE WITH PREMIUM SOUND SYSTEMS (AMPLIFIED SYSTEMS)

APPLICATIONS

Mazda

2011 - 2012 Mazda2
2004 - 2011 Mazda3
2012 - 2014 Mazda3*
2006 - 2010 Mazda5
2012 - 2014 Mazda5*
2003 - 2011 Mazda6
2006 - 2011 MX-5 Miata
2004 - 2011 RX-8
2002 - 2006 MPV
2007 - 2011 Speed3
2006 - 2007 Speed6
2007 - 2011 CX-7
2007 - 2011 CX-9
2008 - 2011 Tribute

Notes:

*Important: These applications require the installer to place a Diode on the 24-Pin White harness, from the Crux T-Harness. See slip sheet included in the Manual for further information & instructions.

**2008-2010 Tribute requires a different harness: Crux Part Number 3196; must be special ordered.

USING THE MENU STRUCTURE:

To enter the Voice Menu you must do the following:

1. Hold Seek Down for 2 seconds.
2. Press Seek Up once.
3. Hold Seek Down for 2 seconds.

You are now at the top of the menu.

4. Press Seek Down to scroll through the menu options.
5. Press Seek Up to select a menu option.

MISSED CALLS:

Continue to press the "SEEK DN" button till you hear the interface announce "MISSED CALLS", and wait for the numbers to be announced.

3. When the number you wish to dial is announced, press the "SEEK UP" button once to make the call.

INCOMING CALLS:

Continue to press the "SEEK DN" button till you hear the interface announce "INCOMING CALLS", and wait for the numbers to be announced.

3. When the number you wish to dial is announced, press the "SEEK UP" button once to make the call.

OUTGOING CALLS:

Continue to press the "SEEK DN" button till you hear the interface announce "OUTGOING CALLS", and wait for the numbers to be announced.

3. When the number you wish to dial is announced, press the "SEEK UP" button once to make the call.

PHONE MUST BE UNPAIRED TO ENTER THE FOLLOWING MENU STRUCTURE

SETTING TTS VOLUME:

Continue to press the "SEEK DN" button twice till you hear the interface announce "SETTING VOLUME", and wait for her announcement.

3. Set the TTS volume by pressing the volume Vol+ and Vol- waiting for the announcement. Each announcement will indicate the volume level of the TTS.
4. When the desired volume level is reached, press the "SEEK UP" button once to select.

DELETE ALL PAIRED DEVICES:

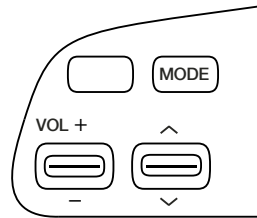
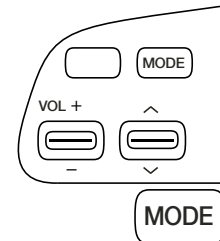
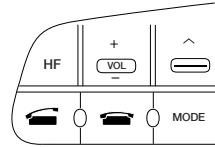
This feature allows you to delete all paired devices on the interface. The module does NOT allow the user to only clear one device. The module will delete all previously paired devices only

Continue pressing the "SEEK DN" button twice till you hear the interface announce "DO YOU WANT TO DELETE PAIRED PHONE LIST".

3. Press the "SEEK UP" button once within 3 seconds to confirm.
4. The interface will ask "ARE YOU SURE", press the "SEEK UP" button once to re-confirm..

Note: The menu structures only remember the last 24 numbers in the call log from dialed from the mobile phone.

Note: All menu structures work in 3 second increments. If after 3 seconds the interface will time-out.



Have a bad connection when using the A2DP or Handsfree profiles?

Delete all paired devices on your mobile device and on the UBT. (See Using The Menu Structure)

Are you experiencing random static interruptions during your phone calls?

Remove the battery on the mobile device for a minimum of 15 Seconds.

Have you paired your mobile device, and get no sound from the radio? Try resetting the TTS volume setting.

With the phone paired to the UBT, enter the "SETTING TTS VOLUME" under menu structure. The default level is at volume 4.

