

**Experts In Home Cleaning™**

# STEAM & sweep

USER'S GUIDE  
57F4 SERIES 220-240V

- 2 Thank You
- 3 Safety Instructions
- 4 Product View
- 5 Assembly
- 6-8 Operations
- 9 Maintenance and Care
- 10 Troubleshooting
- 10 Replacement Parts
- 10 Additional Accessories
- 11 Warranty
- 12 Consumer Services



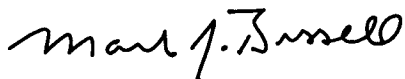
## Thanks for buying a BISSELL Steam & Sweep

We're glad you purchased a BISSELL Steam & Sweep. Everything we know about floor care went into the design and construction of this complete, high-tech home cleaning system.

Your Steam & Sweep is well made, and we back it with a limited two year warranty. We also stand behind it with a knowledgeable, dedicated Consumer Services department, so, should you ever have a problem, you'll receive fast, considerate assistance.

My great-grandfather invented the floor sweeper in 1876. Today, BISSELL is a global leader in the design, manufacture, and service of high quality homecare products like your Steam & Sweep.

Thanks again, from all of us at BISSELL.



Mark J. Bissell  
Chairman, President & CEO

# IMPORTANT SAFETY INSTRUCTIONS

**When using an electrical appliance, basic precautions should be observed, including the following:**

## **READ ALL INSTRUCTIONS BEFORE USING STEAM & SWEEP.**

Always connect to a properly Earthed outlet. Unplug from outlet when not in use and before conducting maintenance or troubleshooting.

## **⚠ WARNING: To reduce the risk of fire, electric shock, or injury:**

- Use indoors only
- Do not immerse
- Use only on surfaces moistened by cleaning process
- Do not leave machine when it is plugged in
- Do not service machine when it is plugged in
- If the supply cord is damaged, it must be replaced by the manufacturer or its service agent in order to avoid a hazard
- Do not use machine if it has been dropped, damaged, left outdoors or dropped into water
- Do not expose to rain, store indoors
- Do not pull or carry by cord, use cord as a handle, close door on cord, pull cord around sharp corners or edges, run appliance over cord, or expose cord to heated surfaces
- Do not carry the appliance while in use
- Do not unplug by pulling on cord; unplug by grasping plug not the cord
- Do not handle plug or appliance with wet hands
- Do not put any object into appliance openings, use with blocked opening or restrict air flow
- Do not expose hair, loose clothing, fingers or body parts to openings or moving parts
- Do not pick up hot or burning objects
- Do not pick up flammable or combustible materials (lighter fluid, petrol, kerosene, etc.) or use in the presence of explosive liquids or vapours
- Do not use appliance in an enclosed space filled with vapours given off by oil base paint, paint thinner, some moth proofing substances, flammable dust, or other explosive or toxic vapours
- Remove plug from electrical outlet before cleaning or maintaining the appliance
- Do not run appliance over supply cord. A hazard may occur if the appliance runs over the supply cord


- Not intended for use by persons (including children) with reduced physical, sensory or mental capabilities, or lack of experience and knowledge, unless they have been given supervision or instruction concerning use of the appliance by a person responsible for their safety
- Young children should be supervised to ensure that they do not play with the appliance
- Do not pick up toxic material (chlorine bleach, ammonia, drain cleaner, petrol, etc.)
- Do not modify the Earthed plug
- Do not allow to be used as a toy
- Do not use for any purpose other than described in this User's Guide
- Use only manufacturer's recommended attachments
- Use only cleaning products formulated by BISSELL for use in this appliance to prevent internal component damage
- Keep openings free of dust, lint, hair, etc.
- Keep appliance on a level surface
- Turn off all controls before unplugging
- Be extra careful when cleaning stairs
- Liquid or steam must not be directed towards equipment containing electrical components
- Pay close attention when working around children

## **SAVE THESE INSTRUCTIONS.**

THIS MODEL IS FOR HOUSEHOLD USE ONLY.

## **⚠ WARNING:**

This appliance must be Earthed.

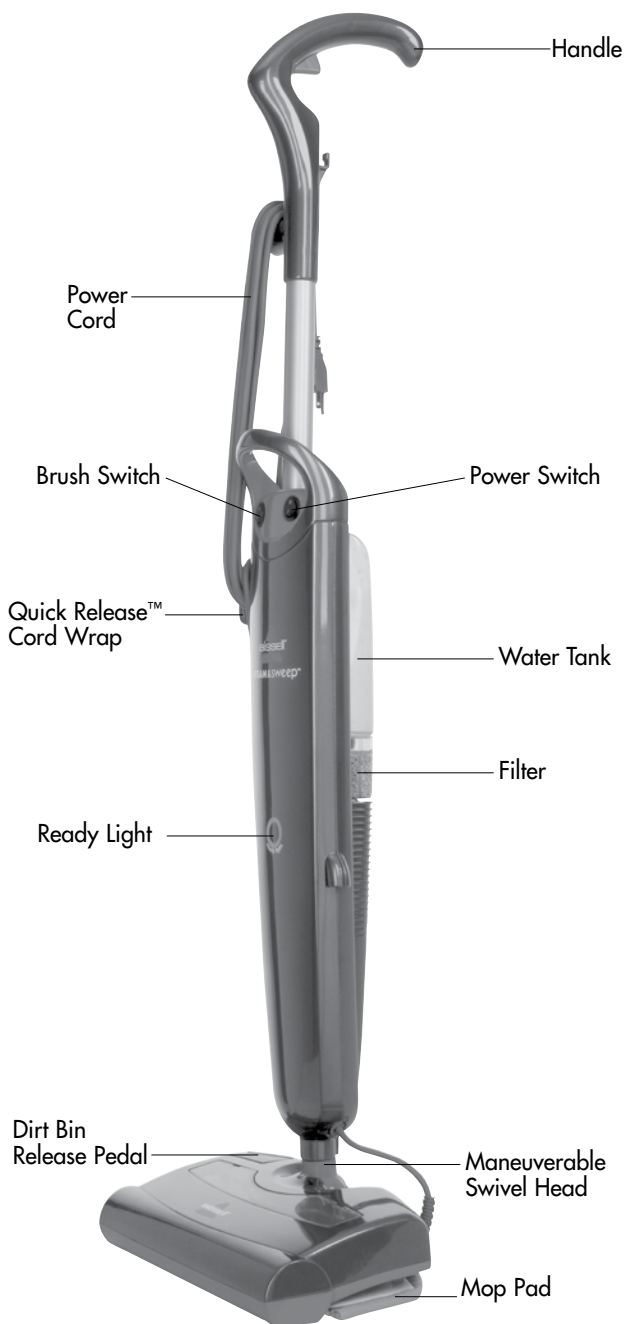
**⚠** The symbol  means WARNING: Danger of scalding.

**⚠** Surface may be hot. Avoid contact.

**IMPORTANT** FOR OPERATION ON A 220-240 VOLT A.C. 50/60 Hz POWER SUPPLY ONLY.

If your appliance is fitted with a nonrewireable BS 1363 plug it must not be used unless a 13 amp (ASTA approved to BS 1362) fuse is fitted in the carrier contained in the plug. Spares may be obtained from your BISSELL supplier. If for any reason the plug is cut off, it must be disposed of, as it is an electric shock hazard should it be inserted into a 13 amp socket.

# Product view



# Assembly

**Your Steam & Sweep assembles quickly and easily. The only tool you will need for assembly is a Phillips head screwdriver.**

**Your Steam & Sweep is packaged with the following items:**

**Handle Assembly**

**Lower Body with Water Purification System**

**Maneuverable Swivel Head**

**Removable Water Tank**

**1 large Phillips Head Screw**

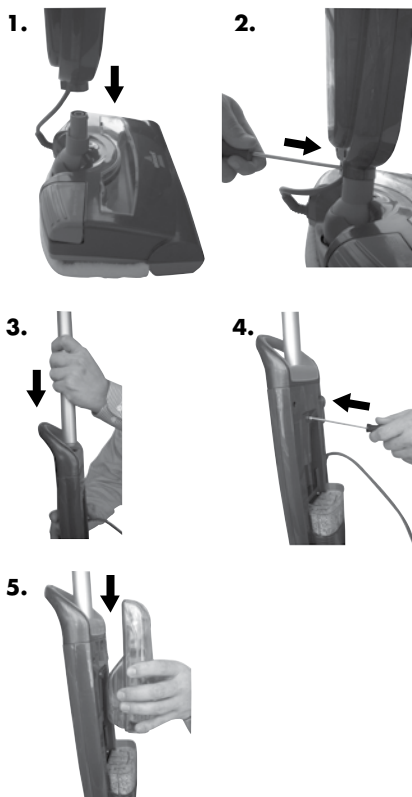
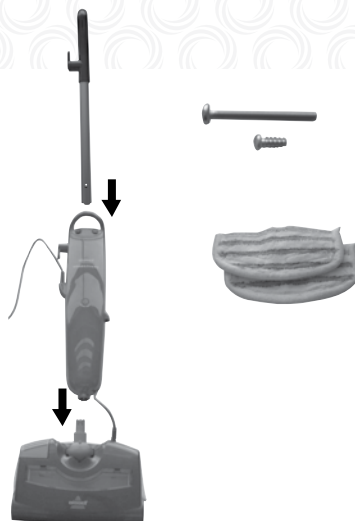
**1 small Phillips Head Screw**

**2 Mop Pads**

## **Attach handle to Steam & Sweep**

1. Attach lower body to maneuverable swivel head (If your Steam & Sweep came with the swivel head already assembled to the body, you may skip this step).
2. Secure maneuverable swivel head with small Phillips head screw. Tighten until secure.
3. Slide handle assembly down into lower body until it will go no further.
4. Secure the handle by placing the large Phillips head screw through the screw opening in the lower body and into the rear of the handle assembly. Tighten with screwdriver until secure.
5. Slide water tank onto lower body by lining up vertical glides and gently sliding tank into place.

Steam & Sweep assembly is now complete.



# Operations

## Special Features

### Removable water tank

The water tank is located on the back of the Steam & Sweep. It can be refilled with water any time during use. Distilled or demineralized water is recommended in place of tap water.

**Do not use chemicals with your Steam & Sweep.**

### Water purification system

This filter removes minerals and other impurities from tap water, preventing water deposits from damaging your Steam & Sweep. It should be replaced when the bright green grains turn blue. To maximize performance of the filter, distilled water should be used.

### Ready light

The ready light will glow when water has been converted to steam and the Steam & Sweep is ready to use.

### Steam on demand trigger

Press to release steam.

### Maneuverable swivel head

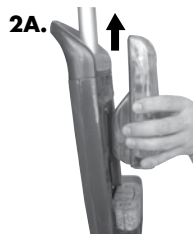
Allows you to pick up dust and small debris while steam cleaning your floor. The maneuverable swivel head gets into tight spaces and under cabinets.

### Washable mop pads

Reusable microfiber mop pad is machine washable and safe for all hard floor surfaces.

## Getting ready

1. The mop pad may have already come attached to the swivel head. If not, attach mop pad to swivel head using the Velcro strips.
2. Fill the water tank.
- A. Remove the tank by lifting straight up and away from the unit.
  - B. Unscrew the cap at the bottom of the water tank and remove the insert assembly.
  - C. Fill the water tank with water. For best results, water should be at room temperature.



## *Tip:*

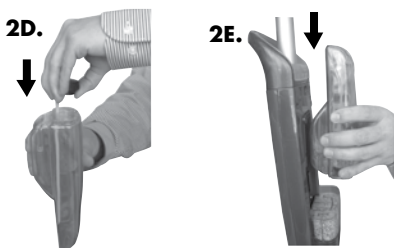
To prevent damage to the machine, do not attempt to use your Steam & Sweep without water in the tank.

# Operations

## Getting ready continued

- D. Replace the insert assembly and cap, tighten until snug.
  - E. Replace the water tank by lining up the vertical guides and gently sliding it back into place.
3. Twist the quick release cord wrap clockwise to unwrap the power cord completely, make sure both switches are in the OFF position and plug it into a proper outlet.
  4. Turn power button on. The ready light will illuminate when the Steam & Sweep is ready for use.

**NOTE: Upon first use of the Steam & Sweep or first use of a new filter, the pump may make a “knocking” sound while the filter fills with water. This sound is normal and may last a couple of minutes. Continue to depress the trigger until the knocking sound subsides and the unit emits steam. If the sound continues, please make sure the tanks are firmly secured.”**



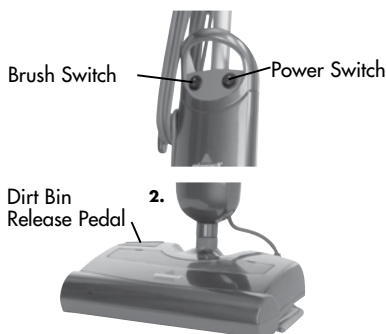
## **⚠ WARNING:**

Steam & Sweep will not pick up crayons, marbles, and other large objects.

## Before you clean

The Steam & Sweep can be used as a sweeper and a steam mop at the same time. For best results, use the Steam & Sweep's powerful sweeper to clear floor of dust and small debris before mopping.

1. Turn the brush switch to the ON position to activate the brush.
2. To empty the dirt container, turn the power off, gently tap the release pedal on the swivel head. Lift unit straight up leaving bin on floor and empty into a trash can. The dirt container may be warm to the touch.
3. Replace the dirt container by pushing it back into the swivel head until it snaps back into place.



# Operations

## Steam cleaning hard floors

Your Steam & Sweep is designed to clean hard flooring such as ceramic tile, vinyl, marble, stone and sealed hard wood floors. Use of your Steam & Sweep on waxed or some unwaxed floors may result in a diminished glossiness. The Steam & Sweep is not for use on unsealed wood floors. Ensure that the Steam & Sweep is thoroughly tested in an inconspicuous area prior to cleaning a large floor area. Also be sure to check the care instructions from your flooring manufacturer.

1. When the ready light illuminates, begin cleaning by slowly passing over the surface while pressing the steam on demand trigger to emit steam as needed.
2. To sanitize an area of your floor, (attack invisible germs and bacteria) leave the Steam & Sweep over the area for a minimum of 15 seconds using continuous steam, but no longer than 20 seconds. For larger areas, overlap swivel head placement.

**Important: Sanitizing on timber floors is not recommended as prolonged application of steam in one area increases the risk of damage to the surface treatment on timber floors, especially in areas with regular foot traffic and direct sunlight, which will wear down timber floor surface treatments making it more susceptible to steam damage. See CAUTION to the right.**

3. When the Steam & Sweep stops emitting steam, turn the unit off. Simply remove the water tank, refill, and continue cleaning.

## WARNING:

Never put descaling aromatic, alcoholic, or detergent products into the steam cleaner, as this may damage it or make it unsafe for use.

## Tip:

The Steam & Sweep may be used as both a steam mop and a sweeper at the same time.

## CAUTION:

Exercise extreme care when using the Steam & Sweep on timber flooring. Ensure the Steam & Sweep is thoroughly tested in an inconspicuous area prior to mopping a large floor area. The Steam & Sweep generates hot steam, so when depressing the trigger to apply steam, ensure the Steam & Sweep is moving continuously. The trigger does not need to be depressed at all times. Prolonged application of steam in one area increases the risk of damage to the surface treatment on timber floors. Check with your timber floor treatment application specialist prior to Steam & Sweep operation. Regular foot traffic and direct sunlight will wear down timber floor surface treatment making it more susceptible to steam damage. Exercise extreme care when using the Steam & Sweep on timber flooring.



# Maintenance and care

## When you're done

1. Make sure both power switches are in the OFF position. Unplug power cord from outlet.
2. Carefully remove mop pad from swivel head, as mop pad and lower assembly will be hot.
3. Any water remaining in the water tank should be emptied prior to machine storage.
4. Mop pad can be machine washed in warm water with mild detergent. Do not use bleach or fabric softeners. For best results, air dry.
5. Wrap power cord around quick release cord wrap on side of Steam & Sweep.
6. Wipe all surfaces of Steam & Sweep with a soft cloth. Store upright in a protected, dry area.

**NOTE: If steam output is reduced, the nozzle may be blocked. To remedy, unplug the unit, remove the swivel head from the lower body and pour vinegar through the center tube of the swivel head "neck". Clear the nozzle by inserting a paper clip into the brass spray tip located in the bottom of the lower body.**

## **CAUTION:**

Upright storage of the Steam & Sweep with a wet mop pad may result in the formation of white marks on your floor. To remove the white marks, clean area with vinegar.

## Replacing the water purification system

If you fill your Steam & Sweep cleaner with normal tap water, it is essential to check the filter and replace it when it is no longer effective. Change the filter when the bright green grains turn blue. If the filter is not changed at the appropriate time, calcium deposits will accumulate on the heating element, causing damage or reduced performance.

To replace the filter, pull it up and away from the Steam & Sweep.

Using distilled or demineralized water will maximize the performance of your filter.

To order a replacement filter, refer to the replacement parts section on page 10.

### *Tip:*

Using distilled or demineralized water will maximize the performance of your filter.

### *Tip:*

Be sure to use only a BISSELL water filter in your Steam & Sweep.

# Troubleshooting

## Reduced steam or no steam

### Possible causes

1. Water tank is empty
2. Depleted water filter
3. Blocked steam nozzle

### Remedies

1. Fill water tank
2. Replace filter
3. Refer to **NOTE** in the middle of page 9.

**Other maintenance or service not included in the manual should be performed by an authorized service representative.**

**Thank you for selecting a BISSELL product.**

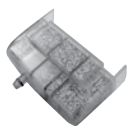
**NOTE: There are no serviceable parts in the upper housing of this product.**

**Please do not return this product to the store.**

## Replacement parts - BISSELL Steam & Sweep

Item	Part No.	Part Name
1	20P5-E	Water filter
2	203-2246	Handle assembly with screw
3	203-2243	Water tank with cap and insert
4	203-2168	Storage hook with screws

1



2



3



4



## Additional accessories

Item	Part No.	Part Name
1	55M3-E	Microfiber mop pads – 2 pack

1



# Warranty - BISSELL Steam & Sweep

This warranty gives you specific legal rights, and you may also have other rights which may vary from country to country. If you need additional instruction regarding this warranty or have questions regarding what it may cover, please contact BISSELL Consumer Services by Email, telephone, regular mail as described below, or contact your local in country distributor.

## Limited Two Year Warranty

Subject to the \*EXCEPTIONS AND EXCLUSIONS identified below, BISSELL Homecare, Inc. will repair or replace (with new or remanufactured components or products), at BISSELL's option, free of charge from the date of purchase by the original purchaser, for two years any defective or malfunctioning part due to manufacturer defect.

This warranty applies to product used for personal, and not commercial or rental service. This warranty does not apply to fans or routine maintenance components such as filters. Damage or malfunction caused by negligence, abuse, neglect, unauthorized repair, or any other use not in accordance with the User's Guide is not covered.

BISSELL recommends that the original packaging be kept for the duration of the warranty period in case such need arises within the warranty period that the item need re-packing and transportation.

### For UK inquiries:

Monday - Thursday 9 am — 5 pm  
Friday 9 am — 4 pm

### BISSELL Homecare (Overseas) Inc.

Ground Floor  
226 Berwick Avenue  
Slough  
Berkshire, SL1 4QT  
United Kingdom  
Telephone: 0844.888.6644

### For Australian inquiries:

Monday - Friday 9 am — 5 pm

### BISSELL AUSTRALIA PTY LIMITED

42 Rocco Dr.  
Scoresby 3179  
Victoria  
Australia  
Telephone: 1.800.811.183

### For New Zealand inquiries:

Monday - Friday 9 am — 5 pm

### Parex Industries Ltd.

5 Tolich Place  
Henderson 0610  
Auckland  
New Zealand  
Telephone: 0800.247.735

### For Middle East & Africa inquiries:

Sunday - Thursday 8 am — 5 pm

### BISSELL Middle East & Africa

PO Box 61286  
Jebel Ali Free Zone  
Dubai  
United Arab Emirates  
Telephone: 971.4.881.8597

### For South African inquiries:

Monday - Friday 9 am — 5 pm

### Tevo (PTY) Ltd.

P.O.Box 25234  
Gateway 4321, South Africa  
Telephone: 27 (0) 86.177.8888  
email: servicecentre@tevo.co.za

### For all other inquiries:

Monday - Friday 8 am — 4 pm

### BISSELL Homecare, Inc.

PO Box 1888  
Grand Rapids, Michigan 49501 USA  
Telephone: 01.616.453.4451  
Fax: 01.616.453.1383

## \*EXCEPTIONS AND EXCLUSIONS FROM THE TERMS OF THE LIMITED WARRANTY

BISSELL HOMECARE, INC. AND ITS IN-COUNTRY DISTRIBUTORS ARE NOT LIABLE FOR INCIDENTAL OR CONSEQUENTIAL DAMAGES OF ANY NATURE ASSOCIATED WITH THE USE OF THIS PRODUCT. BISSELL'S LIABILITY WILL NOT EXCEED THE PURCHASE PRICE OF THE PRODUCT.

THIS WARRANTY IS EXCLUSIVE AND IN LIEU OF ANY OTHER WARRANTIES EITHER ORAL OR WRITTEN, ANY IMPLIED WARRANTIES WHICH MAY ARISE BY OPERATION OF LAW, INCLUDING THE IMPLIED WARRANTIES OF MERCHANTABILITY AND FITNESS FOR A PARTICULAR PURPOSE, ARE LIMITED TO THE FIVE YEAR DURATION FROM THE DATE OF PURCHASE AS DESCRIBED ABOVE.

**FOR AUSTRALIAN CONSUMERS ONLY:** OUR GOODS COME WITH GUARANTEES THAT CANNOT BE EXCLUDED UNDER THE AUSTRALIAN CONSUMER LAW. YOU ARE ENTITLED TO A REPLACEMENT OR REFUND FOR A MAJOR FAILURE AND FOR COMPENSATION FOR ANY OTHER REASONABLY FORESEEABLE LOSS OR DAMAGE. YOU ARE ALSO ENTITLED TO HAVE THE GOODS REPAIRED OR REPLACED IF THE GOODS FAIL TO BE OF ACCEPTABLE QUALITY AND THE FAILURE DOES NOT AMOUNT TO A MAJOR FAILURE.

THIS WARRANTY IS IN ADDITION TO OTHER RIGHTS OR REMEDIES UNDER LAW. NOTHING IN THIS WARRANTY EXCLUDES, LIMITS OR MODIFIES ANY LIABILITY OF BISSELL WHICH IS IMPOSED BY LAW, OR LIMITS OR MODIFIES ANY REMEDY AVAILABLE TO THE CONSUMER WHICH IS GRANTED BY LAW.

TO MAKE A CLAIM UNDER THIS WARRANTY CONTACT BISSELL AUSTRALIA PTY LTD (DETAILS ABOVE). CONTACT BISSELL PRIOR TO RETURNING ANY GOODS. WHERE AGREED, BISSELL WILL REIMBURSE REASONABLE POSTAGE / HANDLING COSTS (IF ANY) FOR RETURNING GOODS TO BISSELL.

## If your BISSELL product should require service:

Call BISSELL Consumer Services at the numbers below and we will give you the location of a BISSELL Authorized Service Center in your area. If you have questions about your warranty or need replacement parts please contact the numbers below.

### For UK inquiries:

Monday - Thursday 9 am — 5 pm  
Friday 9 am — 4 pm

### BISSELL Homecare (Overseas) Inc.

Ground Floor  
226 Berwick Avenue  
Slough  
Berkshire, SL1 4QT  
United Kingdom  
Telephone: 0844.888.6644

### For New Zealand inquiries:

Monday - Friday 9 am — 5 pm

### Parex Industries Ltd.

5 Tolich Place  
Henderson 0610  
Auckland  
New Zealand  
Telephone: 0800.247.735

### For South African inquiries:

Monday - Friday 9 am — 5 pm

### Tevo (PTY) Ltd.

P.O.Box 25234  
Gateway 4321, South Africa  
Telephone: 27 (0) 86.177.8888  
email: servicecentre@tevo.co.za

### For Australian inquiries:

Monday - Friday 9 am — 5 pm

### BISSELL AUSTRALIA PTY LIMITED

42 Rocco Dr.  
Scoresby 3179  
Victoria  
Australia  
Telephone: 1.800.811.183

### For Middle East & Africa inquiries:

Sunday - Thursday 8 am — 5 pm

### BISSELL Middle East & Africa

PO Box 61286  
Jebel Ali Free Zone  
Dubai  
United Arab Emirates  
Telephone: 971.4.881.8597

### For all other inquiries:

Monday - Friday 8 am — 4 pm

### BISSELL Homecare, Inc.

PO Box 1888  
Grand Rapids, Michigan 49501 USA  
Telephone: 01.616.453.4451  
Fax: 01.616.453.1383

Or visit the BISSELL website - [www.bissell.com](http://www.bissell.com)

When contacting BISSELL, have model number of cleaner available.

Please record your Model Number: \_\_\_\_\_

Please record your Purchase Date: \_\_\_\_\_

**NOTE: Please keep your original sales receipt. It provides proof of purchase date in the event of a warranty claim. See Warranty on page 11 for details.**



Experts In Home Cleaning™

©2012 BISSELL Homecare, Inc.  
Grand Rapids, Michigan  
All rights reserved. Printed in China  
Part Number 120-4370  
Rev10/11  
Visit our website at:  
[www.bissell.com](http://www.bissell.com)