

COMPAQ **IJ600**
Color Inkjet Printer

User's Guide for Windows 95 and Windows 98

Edition: 2000

The information in this guide is subject to change without notice.

COMPAQ COMPUTER CORPORATION SHALL NOT BE LIABLE FOR TECHNICAL OR EDITORIAL ERRORS OR OMISSIONS CONTAINED HEREIN; NOR FOR INCIDENTAL OR CONSEQUENTIAL DAMAGES RESULTING FROM THE FURNISHING, PERFORMANCE, OR USE OF THIS MATERIAL.

This guide contains information protected by copyright. No part of this guide may be photocopied or reproduced in any form without prior written consent from Compaq Computer Corporation.

Compaq and Presario are registered in the U.S. Patent and Trademark office.

Microsoft, MS-DOS, and Windows are registered trademarks of the Microsoft Corporation.

© Copyright 2000 Compaq Computer Corporation.
All rights reserved.

PCL[®] is a registered trademark of the Hewlett-Packard Company. PCL 3 is Hewlett-Packard Company's designation of a set of printer commands (language) and functions included in its printer products. This printer is intended by Compaq Corporation to be compatible with the PCL 3 language. This means the printer recognizes PCL 3 commands used in various application programs, and that the printer emulates the functions corresponding to the commands.

The software described in this guide is furnished under a license agreement or nondisclosure agreement. The software may be used or copied only in accordance with the terms of the agreement.

Product names mentioned herein may be trademarks and/or registered trademarks of their respective companies.

UNITED STATES GOVERNMENT RESTRICTED RIGHTS

This software and documentation are provided with RESTRICTED RIGHTS. Use, duplication or disclosure by the Government is subject to restrictions as set forth in subparagraph (c)(1)(ii) of the Rights in Technical Data and Computer Software clause at DFARS 252.227-7013 and in applicable FAR provisions: Compaq Computer Corporation, Houston, TX 77070.



Contents

Steps to basic printing 1

Step 1: Load the paper 1

Step 2: Customize the Printer Properties 3

Step Three: Print your document 6

Maintaining your printer 7

Using the Control Program 7

Installing or replacing print cartridges 8

Improving print quality 9

Troubleshooting 13

Printer prints slowly or doesn't print 13

Paper misfeeds or jams 16

Document prints with mistakes or poor quality 17

Problems with transparencies, photos, or envelopes... 19

Error messages and flashing lights 20

Appendix 21

Installing printer software 21

Uninstalling printer software 22

Printing from DOS 22

Electronic emission notices 22

Energy Star 23

Power supply information 24

Safety information 24

Index 25

1

Steps to basic printing

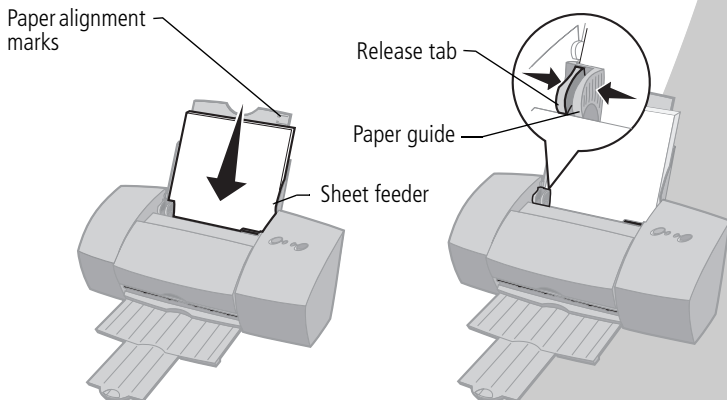
This book describes how to use your printer on Windows 95 and Windows 98. To view the online User's Guide for Windows NT 4.0 and Windows 2000, click the **User's Guide** button on the Printer Software CD for Windows.

Basic printing is as easy as:

- 1 Load the paper (see the next section).
- 2 Customize the Printer Properties (see page 3).
- 3 Print your document (see page 6).

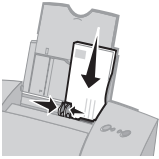
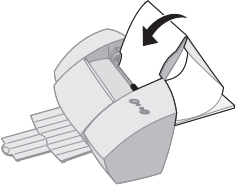
Step 1: Load the paper

- 1 Place up to 100 sheets of paper (depending on thickness) against the right side of the sheet feeder, with the print side facing you. To load specialty papers, see page 2.



- 2 Squeeze the release tab and the paper guide together and slide the paper guide to the edge of the paper.

Loading specialty papers

| Load up to: | Make sure: |
|--|--|
| 10 envelopes | <ul style="list-style-type: none"> • The print side is facing you and the paper guide is against the side of the envelopes. • The stamp location is in the upper left corner. • The envelopes are loaded vertically against the right side of the sheet feeder.  |
| 10 greeting cards, index cards, postcards, or photo cards | <ul style="list-style-type: none"> • The print side is facing you and the paper guide is against the side of the cards. • The cards are loaded vertically against the right side of the sheet feeder. |
| 25 sheets of photo paper or photcards | <ul style="list-style-type: none"> • The glossy or coated side is facing you. • The paper guide is against the side of the paper. |
| 20 sheets of banner paper Note: Make sure you select Banner or Banner A4 paper size in the Printer Properties. For help, see page 5. | <ul style="list-style-type: none"> • You place the banner paper behind the printer. Then bring the unattached edge of the first page over the printer and into the sheet feeder. • The paper guide is against the side of the paper.  |
| 10 transparencies | <ul style="list-style-type: none"> • The rough side of the transparency is facing you (smooth side down). • The paper guide is against the edge of the transparencies. |
| 100 sheets of custom-sized paper | <ul style="list-style-type: none"> • The print side is facing you and the paper guide is against the side of the paper. • Your paper size fits within these dimensions: <ul style="list-style-type: none"> - Width: 76 mm to 215.9 mm 3.0 in. to 8.5 in. - Length: 127 mm to 432 mm 5.0 in. to 17.0 in. |
| 25 iron-on transfers | <ul style="list-style-type: none"> • You load the iron-on transfers following the instructions on the package. • The paper guide is against the side of the iron-on transfers. |

Step 2: Customize the Printer Properties

Your printer software includes several applications that let you easily perform printing tasks. One of these applications is called **Printer Properties**.

The Printer Properties application has two tabs: **Paper** and **Document/Quality**. Each tab contains settings related to the operation of your printer and its software.

Opening the Printer Properties

You can open the Printer Properties from almost any application. This lets you change printer settings **ONLY** for the document you are currently creating in the application.

To open the Printer Properties from an application:

- 1 Open the application's **File** menu.
- 2 Choose **Print** (or **Printer**) **Setup**.
- 3 In the Printer Setup dialog box, click the **Properties**, **Option**, or **Setup** button (depending on the application).
- 4 Change settings as needed. For help, see page 4.

When you open the Printer Properties from Windows, the settings apply to **all** documents, unless you change them from the application.

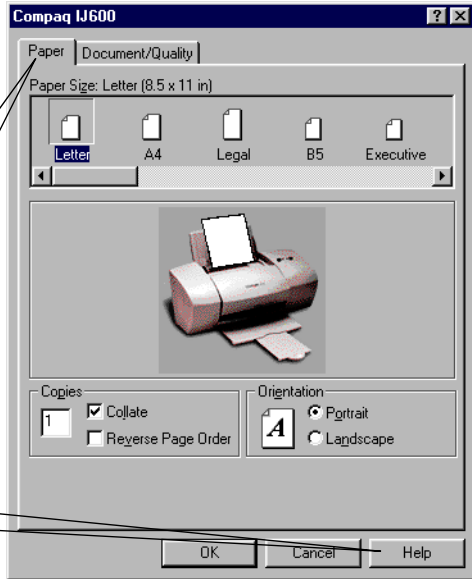
To open the Printer Properties from Windows:

- 1 From the **Start** menu, select **Settings**, and then select **Printers**.
- 2 From the Printers folder, right-click the printer icon for your printer.
- 3 Select **Properties** from the sidebar menu.

Click the...

Paper tab to:

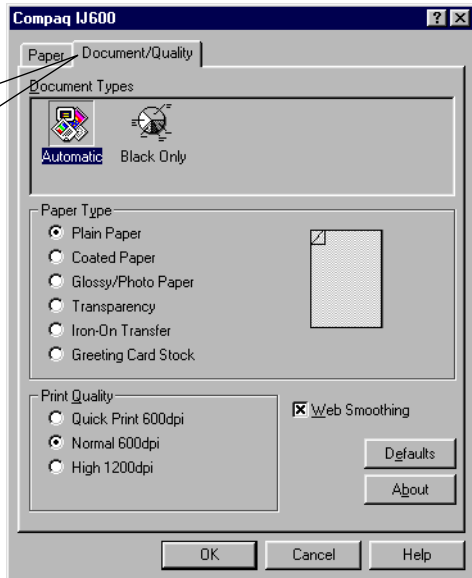
- Select a paper size and orientation.
- Set the number of copies to print.
- Reverse the printing order of your document pages. The first page of your document will be on top of the stack in the paper exit tray.
- Collate your document.



Help button on any tab in the Printer Properties to access the printer driver Help.

Document/Quality tab to select:

- The Document Type you are printing.
- A paper type.
- A print quality setting.
- Web Smoothing when you are printing from the Internet.
- The default settings.



Choosing printer settings for specialty papers

When your printer software was installed, the Printer Properties settings were set to the default settings. Use the default settings for printing most documents on plain paper. To change your printer settings for printing on specialty papers, use the following table:

| When you are printing on this specialty paper: | Click this Printer Properties tab: | To make these selections: |
|--|------------------------------------|--|
| Envelopes | Paper | From the Paper Size area, scroll to select the appropriate envelope size. <i>Note: Many applications are designed to override the envelope settings in Printer Properties.</i> |
| Greeting cards, index cards, or postcards | Document/Quality Paper | From the Paper Type area, select Greeting Card Stock . Select the appropriate Paper Size setting. |
| Photo, glossy or coated papers | Document/Quality | From the Paper Type area, select Glossy/Photo Paper . <i>Notes: For the best possible photo quality, print with a photo and color cartridge combination in your printer. For help installing a cartridge, see page 8. When printing photos, remove each photo as it exits from the printer and allow it to dry before stacking.</i> |
| Sheets of custom-sized paper | Paper | From the list of Paper Sizes, scroll to select Custom . Enter the dimensions for your custom paper size. For help, see "Loading specialty papers" on page 2. |

| When you are printing on this specialty paper: | Click this Printer Properties tab: | To make these selections: |
|--|------------------------------------|---|
| Banner paper | Paper | From the list of Paper Sizes, select Banner or Banner A4 . |
| Iron-On transfers | Document/Quality | From the Paper Type area, select Iron-On Transfer . <i>Note: We recommend printing on plain paper before printing on the actual iron-on transfer.</i> |
| Transparencies | Document/Quality | From the Paper Type area, select Transparency . Select Normal 600dpi or High 1200dpi Print Quality. <i>Note: When printing transparencies, remove each transparency as it exits from the printer and allow it to dry before stacking.</i> |

Step Three: Print your document

- 1 From your application's **File** menu, click **Print**.
- 2 From the Print dialog box, click **OK** or **Print** (depending on the application).

2

Maintaining your printer

Using the Control Program

The Control Program lets you monitor your printer and install or replace print cartridges. To open the Control Program from the **Start** menu, click:

- 1 **Programs.**
- 2 **Compaq IJ600.**
- 3 **Compaq IJ600 Control Program.**

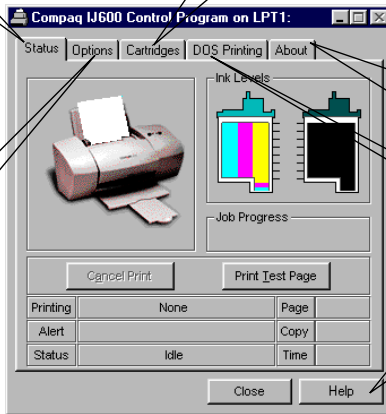
Click the...

Status tab to:

- Monitor the status of your print job.
- Cancel your print job.
- Print a test page.
- View your ink levels.

Cartridges tab to:

- Install or replace print cartridges.
- Align print cartridges for best print quality.
- Clean the print nozzles.
- View cartridge part numbers and order supplies directly from Compaq's Web site.



Options tab to enable/disable various printer software functions, such as Sound Effects and Buffer Mode.

About tab to find the printer software version and copyright information.

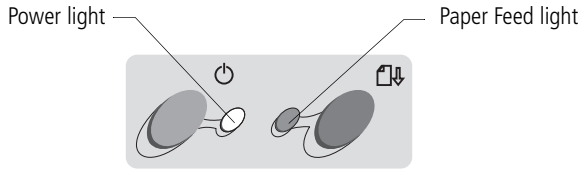
DOS Printing tab to change settings for DOS printing when using a parallel cable.

Help button to access the printer driver Help.

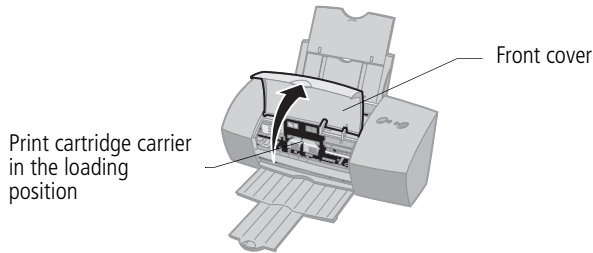
Note: You can also access the Control Program from the Compaq IJ600 desktop icon.

Installing or replacing print cartridges

- 1 Make sure the Power light is On.



- 2 Raise the front cover. The print cartridge carrier moves to the loading position unless the printer is busy.



- 3 Remove the old print cartridge. Store or dispose of the old cartridge.

Black Cartridge

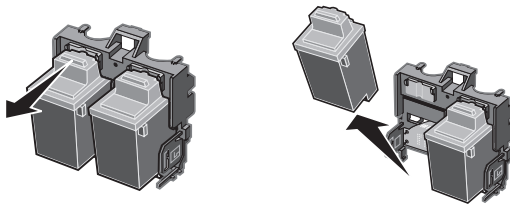
P/N 17G0050

Color Cartridge

P/N 17G0060

Photo Cartridge

P/N 12A1990



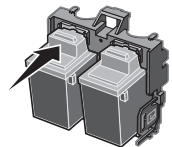
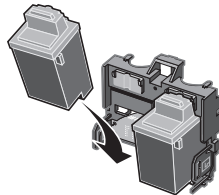
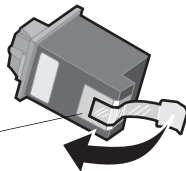
- 4 Install the replacement cartridge in the printer:

If you are installing a new cartridge, remove **only** the sticker and the transparent tape from the bottom of the print cartridge.

Insert the replacement print cartridge into the print cartridge carrier.

Push back firmly on the cartridge until it **snaps** securely into place.

Warning:
DO NOT touch the gold contact area of the print cartridge.



Note: For the best possible photo quality, print with a photo and color cartridge combination in your printer. For help installing a cartridge, see page 8.

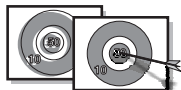
- 5 Close the printer's front cover.
- 6 From the Control Program's **Cartridges** tab, select **Install/Change Cartridge**. For help, see page 7.
- 7 Select the type of cartridge you installed and click **OK**.
- 8 If you installed a new cartridge, the Alignment dialog box displays. Follow the instructions on the Alignment screen to complete the cartridge installation. For help, see the next section.

Improving print quality

If your print quality is not satisfactory, you may need to align your print cartridges or clean the print nozzles.

Aligning print cartridges

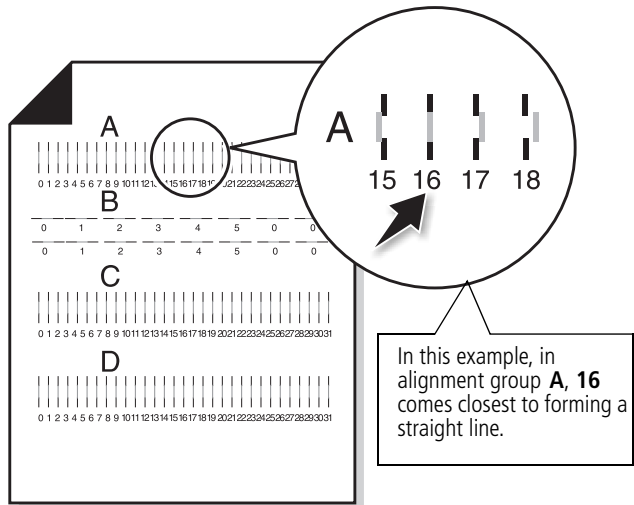
- 1 Load plain paper in the printer.
- 2 From the Control Program's **Cartridges** tab, select **Align Cartridges**. For help, see page 7.



Your printer prints an alignment test page and the Align Cartridge dialog box displays.

The test page that prints has several alignment patterns, depending on the cartridge combination installed. Each

pattern has a number under it. The test page that prints is similar to the one shown:

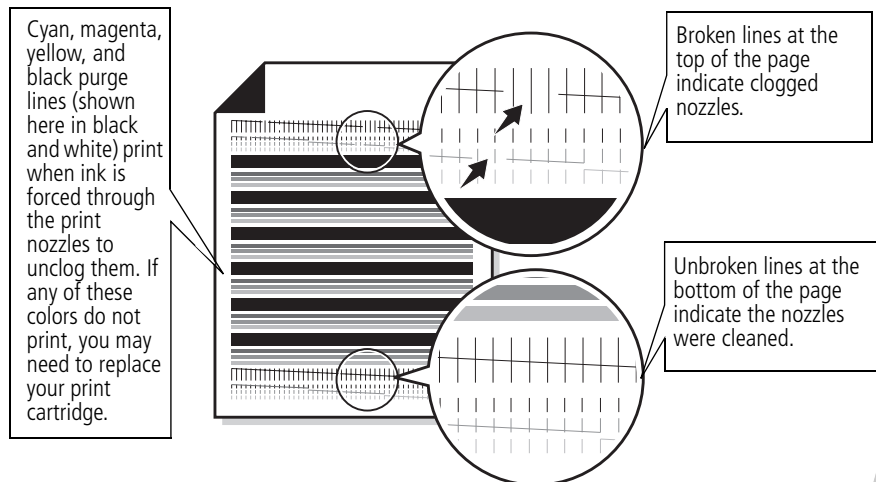


- 3 From each alignment group on the test page, find the number under the alignment pattern that comes closest to forming a straight line.
For example, in sample group **A**, the arrow points to the pattern that comes closest to forming a straight line.
- 4 In the Align Cartridges dialog box, enter the pattern numbers from the printed test page that come closest to forming a straight line.
- 5 After you have entered a number for all of the patterns, click **OK**.

Cleaning print nozzles

- 1 Load plain paper in the printer.
- 2 From the Control Program's **Cartridges** tab, select **Clean Print Nozzles**. For help, see page 7.

The printer feeds a sheet of paper and prints a nozzle test pattern similar to the one shown:



- 3 Compare the diagonal line above the printed bars to the diagonal line below the printed bars. Look for a break in the diagonal lines above the printed bars. A broken line indicates clogged nozzles. If the bottom line still has breaks, run the test up to two more times.
 - If the print quality is satisfactory after running the test three times, the print nozzles are clean. You do not need to complete the remaining steps.
 - If the print quality of both lines is not satisfactory after running the test three times, wipe the print cartridge nozzles. For help, see the next section.

Wiping print nozzles and contacts

If print quality does not improve after cleaning the print nozzles (see page 11), you may need to wipe dried ink from the nozzles.

For help on wiping the print nozzles, see the “Troubleshooting: Print Quality ” section of the printer driver Help. For help accessing the printer driver Help, see page 4.

Preserving print cartridges

To ensure the longest life from your print cartridge and optimum performance from your printer:

- Keep a new print cartridge in its packaging until you are ready to install it.
- Do not remove a print cartridge from the printer except to replace, clean, or store it in an air-tight container. The print cartridge will not print correctly if removed from the printer and left exposed for an extended period of time.
- If a print cartridge runs out of ink, leave the empty cartridge in the printer until you are ready to replace it. Printing with one of the print cartridge carriers empty may cause printer problems.

Compaq’s printer warranty does not cover repair of failures or damage caused by a refilled cartridge. Lexmark does not recommend use of refilled cartridges. Refilling cartridges can affect print quality and cause damage to the printer. For best results, use Compaq recommended supplies.

3

Troubleshooting

Printer prints slowly or doesn't print (see the next section)

Paper misfeeds or jams (see page 16)

Document prints with mistakes or poor quality (see page 17)

Problems with transparencies, photos, or envelopes (see page 19)

Error messages and flashing lights (see page 20)

This section describes printer problems, and explains what you can do to solve them. Select a category from the list in the left margin that best describes your printing problem.

When your printer has a problem, first make sure that:

- The power supply is plugged into the printer and a properly grounded electrical outlet.
- The printer is turned On.
- If you are using a parallel cable, make sure it is an IEEE 1284-compliant parallel cable that supports bidirectional printing.
- Bidirectional (two-way) communications is enabled in your printer software.
 - 1 From the printer's **Control Program**, click the **Options** tab.
 - 2 Make sure **Disable Printer to PC Communications** is **not** checked.

Printer prints slowly or doesn't print



Your printer and your computer may not be able to communicate properly. The following events also indicate two-way communications problems:

- Print cartridge ink level indicators on the Status or Cartridges tabs of the printer's Control Program are shaded.
- Error messages (such as Paper Out) and job progress information do not display on your computer screen.



- A message displays on your computer screen indicating your printer cannot establish bidirectional communications with your computer.

Before proceeding, verify that:

- The printer software is installed correctly. For help, see page 21.
- The parallel or USB cable is securely attached to both the printer and the personal computer.
- The printer is plugged in and turned On.
- If you are using Windows 98 or Windows 2000, your printer port is set to an LPT*n* port for a parallel cable, or to a USB port for a USB cable. To check your printer port and change it if necessary:
 - 1 From the **File** menu of your software application, select **Print**.
 - 2 Check your printer port in the **Where** area.
 - 3 If you need to change your printer port, uninstall and then reinstall the printer software. Follow the instructions on page 21, making sure to click **Cancel** on an subsequent screens.

If you have a switch box or other device (such as a scanner or fax) connected to the computer's parallel port, make sure it supports bidirectional communication. You may need to disconnect your printer from the switch box or other device and connect it directly to your computer.

Printer ejects a blank page after appearing to print

- Make sure you have removed the transparent tape covering the bottom of the print cartridges. For help, see page 8.
- Make sure your Compaq printer is set as the default printer.



Printer prints very slowly

If you are printing photos or your document contains graphics, it may take longer to print than regular text.

- Close any open applications not in use.
- Decrease your print quality setting.
- Consider purchasing more memory, or increasing the virtual memory for your computer.

Printer is plugged in but doesn't print, or you get a Printer Offline message

Make sure:

- The printer is turned On and the paper is loaded correctly.
- The parallel or USB cable is securely connected.
- Your Compaq printer is set as the default printer.
- The print job is not being held or paused in the print queue. To check the printer status:
 - 1 From the Printers folder, double-click the Compaq IJ600 icon.
 - 2 Click the **Printer** menu and make sure no check mark appears next to the **Pause Printing** option.
- Remove any extra devices, such as a scanner, and connect the printer to the parallel port.

Print a test page. If the test page prints, the printer is functioning properly. Check your application.

Test page does not print

Make sure:

- Your print cartridges are properly installed, (see page 8).
- The printer is set as the default printer.
- You are using the correct cable. If you are using a parallel cable, make sure it is an IEEE 1284-compliant parallel cable that supports bidirectional printing.

Paper misfeeds or jams



Paper misfeeds or multiple sheets feed

Make sure:

- You are using a paper recommended for inkjet printers.
- You do not force the paper down into the printer when you load it. Align the top of the paper with the paper alignment guides on the paper support.
- You do not load too much paper in the sheet feeder. Depending on the thickness of your paper, the sheet feeder can hold up to 100 sheets of paper.
- The left paper guide does not cause the paper to bow in the sheet feeder.
- The printer is on a flat, level surface.

Printer has a paper jam

Try removing the paper from the sheet feeder. If the paper is lodged too far into the printer and can't be removed:

- 1 Press the Power button to turn the printer Off.
- 2 Pull firmly on the paper to remove it. If you cannot reach the paper because it is too far into the printer, raise the front cover and pull the paper out.
- 3 Close the front cover.
- 4 Press the Power button to turn the printer On.
- 5 Resend your document to print.

Printer does not feed envelopes or specialty papers

If regular paper feeds without problems, make sure:

- You are loading the envelopes correctly. For help, see "Loading specialty papers" on page 2.
- You are using an envelope size supported by your printer, and it is selected in Printer Properties.

- Your application is designed to print envelopes. Check the user's documentation that came with your application.

Document prints with mistakes or poor quality



Print quality is poor at the left, right, top, or bottom edge of page

Your printer cannot print in the extreme margins of a page. Use these minimum settings:

- Left and right margins:
6.35 mm (0.25 in.) each for all paper sizes except A4
For A4 size paper - 3.37 mm (0.133 in.) each
- Top and bottom margins:
Top - 1.7 mm (0.067 in.)
Bottom - 12.7 mm (0.5 in.)

Vertical straight lines are not smooth

To improve the print quality of vertical straight lines in tables, borders, and graphs:

- Select a higher print quality setting.
- Test the cartridge alignment. For help, see page 9.
- Clean the print nozzles. For help, see page 11.

Print is too dark or smudged

Make sure:

- The Paper Type setting in the Printer Properties matches the paper type loaded in the printer.
- The paper is straight and unwrinkled.
- The ink is dry before you handle the paper.



- The print quality setting is appropriate for the paper type. If you are printing on regular paper, select Quick Print 600dpi.
- The print nozzles are clean . For help, see page 11.

Printed pages have alternating bands of light and dark print (intermittent printing)

- Make sure Enable Buffer Mode is selected on the Options tab of the Control Program.
- Select the High 1200dpi Print Quality setting on the Document/Quality tab of Printer Properties.
- Your printer may have two-way communications problems. For help, see page 13.

The printer settings I selected changed

- When you change printer settings from your application, the settings apply only to the specific document you opened with that application. To make the settings apply to all documents, change the settings from Windows. For more information, see page 3.
- The settings in your application may override the Printer Properties settings. Check the documentation that came with your application for more information.

Colors on the printout differ from the colors on the screen

- Check the ink level graphic on the Cartridges tab of your printer's Control Program. An ink cartridge may be out of ink or low on ink.
- Use a different brand of paper. Every paper brand accepts ink differently and prints with slight color variations.
- Remove any extra devices, such as a scanner, and connect the printer to the parallel port.
- Clean the print nozzles. For help, see page 11.

Colors on the printout are faded

- Check the ink level graphic on the Cartridges tab of your printer's Control Program. Your print cartridge may be low on ink.
- Clean the print nozzles. For help, see page 11.
- Wipe the print nozzles and contacts if the colors still seem faded. For help, see the "Troubleshooting: Print Quality" section of your printer driver Help.

Characters are missing or unexpected

Make sure

- Your Compaq printer is selected as the default printer.
- Your printer and computer have two-way communication. For help, see "Printer prints slowly or doesn't print" on page 13.

Problems with transparencies, photos, or envelopes...



Printer does not feed envelopes or specialty papers

For help, see page 16.

Glossy photo papers or transparencies stick together

- Remove each page as it exits the printer and allow it to dry before stacking.
- Use a transparency or photo paper designed for an inkjet printer.

Transparencies or photos contain white lines

- From the Printer Properties, select the High Quality 1200dpi setting.
- Your print nozzles may need cleaning. For help, see page 11.

Error messages and flashing lights



Power
light

Paper
Feed light

Paper Jam message

For help, see page 16.

Ink Low message

Your print cartridge is running out of ink. Purchase a new print cartridge.

The Power light is On and the Paper Feed light is blinking

- If the printer is out of paper:
 - 1 Load paper.
 - 2 Press the Paper Feed button.
- If the printer has a paper jam, see page 16.

The Power light and Paper Feed light are blinking

The print cartridge carrier has stalled. Check your screen for any error messages.

- 1 Turn the printer Off.
- 2 Wait a few seconds and turn the printer back On.



Appendix

This section contains information about:

- Installing printer software
- Uninstalling printer software
- Printing from DOS
- Notices
- Safety information

Installing printer software

You can obtain the printer software using:

- the compact disc (CD-ROM)
- the World Wide Web
- diskettes

If your printer software does not install properly, a communications error message appears when you try to print. You may need to uninstall, and then reinstall the printer software. For help, see page 22.

Using the CD-ROM

To install the printer software:

- 1 Start Windows.
- 2 Click **Cancel** on any screens that appear.

- 3 When the desktop appears, insert the software CD.

The Compaq IJ600 software installation screen appears.

- 4 Click **Install Printer Software**.

Note: If the CD does not run automatically when you insert it:

- a From the **Start** menu, select **Run**.
- b In the command-line text box, type the letter of your CD-ROM drive, followed by `:setup` (for example, `d:setup`), and then click **OK**.

Using the World Wide Web

If your computer does not have a CD-ROM drive, you can download a driver from Compaq's World Wide Web site at www.compaq.com/

- 1 From Compaq's web page, select the appropriate driver for your operating system.
- 2 Select **Save to Disk**.
- 3 Select a location on your hard disk drive.
- 4 Double-click the executable (.exe) file to open it.

- 5 Follow the instructions on your screen.

Using diskettes

If your computer does not have a CD-ROM drive, you can create driver diskettes using a friend's computer or a computer at your Compaq dealer that has a CD-ROM drive. You will need at least three blank 3.5 inch diskettes.

To create diskettes of the printer software:

- 1 Insert the printer software CD into the CD-ROM drive. If the CD does not run automatically:
 - a From the **Start** menu, select **Run**.
 - b In the command-line text box, type the letter of your CD-ROM drive, followed by `:setup` (for example, `d:setup`), and then click **OK**.
- 2 When the Compaq IJ600 software installation screen displays, select **Tools**.
- 3 Select **Create Diskettes**.
- 4 Follow the instructions on the screen.

To install the printer software from diskettes:

- 1 Start Windows.
- 2 Insert Setup Disk 1 into your disk drive.
- 3 From the **Start** menu, choose **Run**.
- 4 In the command-line text box, type the letter of your disk drive, followed by **:/setup** (for example, **a:/setup**), and then click **OK**.
- 5 When prompted by the printer software, insert the appropriate disks into your disk drive and click **OK**.
- 6 Follow the instructions on the screen.

Ordering Diskettes

If your computer does not have a CD-ROM drive, and you do not have access to either the World Wide Web or a computer with a CD-ROM drive, you can order diskettes from our Technical Support Center.

Uninstalling printer software

If your printer software does not install properly, or your printer port is not set to the correct port, you may need to uninstall, and then reinstall your printer software.

To uninstall the printer software:

- 1 From the **Start** menu, select **Programs**.
- 2 Select **Compaq IJ600**.
- 3 Select **Compaq IJ600 Uninstall**.
- 4 Follow the instructions on your screen.

To reinstall the printer software, follow the instructions from "Installing printer software" on page 21.

Printing from DOS

DOS printing is available when you are using a parallel cable connection.

To open your printer online Help system and find information on printing from DOS:

- 1 Open the Printer Properties (for help, see page 3) or the Control Program (for help, see page 7).
- 2 Click the **Help** button in the lower-right corner of the software screen.
- 3 At the top of the Help screen, click **Help Contents**.
- 4 Scroll down the screen to **How to...**
- 5 From the How to... topics, click **Print from Windows and DOS applications**.

Electronic emission notices

Federal Communications Commission (FCC) compliance information statement

This equipment has been tested and found to comply with the limits for a Class B digital device, pursuant to Part 15 of the FCC Rules. Operation is subject to the following two conditions: (1) this device may not cause harmful interference, and (2) this device must accept any

interference received, including interference that may cause undesired operation.

The FCC Class B limits are designed to provide reasonable protection against harmful interference in a residential installation. This equipment generates, uses and can radiate radio frequency energy and, if not installed and used in accordance with the instructions, may cause harmful interference to radio communications. However, there is no guarantee that interference will not occur in a particular installation. If this equipment does cause harmful interference to radio or television reception, which can be determined by turning the equipment off and on, the user is encouraged to try to correct the interference by one or more of the following measures:

- Reorient or relocate the receiving antenna.
- Increase the separation between the equipment and receiver.
- Connect the equipment into an outlet on a circuit different from that to which the receiver is connected.
- Consult your point of purchase or service representative for additional suggestions.

The manufacturer is not responsible for any radio or television interference caused by using other than recommended cables or by unauthorized changes or modifications to this equipment. Unauthorized changes or modifications could void the user's authority to operate this equipment.



To assure compliance with FCC regulations on electromagnetic interference for a Class B computing device, use a properly shielded and grounded cable. Use of a substitute cable not properly shielded and grounded may result in a violation of FCC regulations.

Any questions regarding this compliance information statement should be directed to:

Compaq Computer Corporation
P. O. Box 692000, Mail Stop
510101
Houston, Texas 77269-2000

Or, call (281) 514-3333

Industry Canada compliance statement

This Class B digital apparatus meets all requirements of the Canadian Interference-Causing Equipment Regulations.

Avis de conformité aux normes d'Industrie Canada

Cet appareil numérique de la classe B respecte toutes les exigences du Règlement sur le matériel brouilleur du Canada.

European Community (EC) directives conformity

This product is in conformity with the protection requirements of EC Council directives 89/336/EEC and 73/23/EEC on the approximation and harmonization of the laws of the Member States relating to

electromagnetic compatibility and safety of electrical equipment designed for use within certain voltage limits.

A declaration of conformity with the requirements of the Directive has been signed by the the assigned parties within Compaq Computer Corporation.

This product satisfies the Class B limits of EN 55022 and safety requirements of EN 60950.

Japanese VCCI Notice

この装置は、情報処理装置等電磁障害自主規制協議会（VCCI）の基準に基づきクラスB情報技術装置です。この装置は、希望場所で使用することを目的としていますが、この装置がクラスB電磁気干渉（EMC）発生源に近接して使用されると、受信障害を引き起こすことがあります。取扱説明書に従って正しい取り扱いをして下さい。

The United Kingdom Telecommunications Act 1984

This apparatus is approved under the approval number NS/G/1234/J/100003 for the indirect connections to the public telecommunications systems in the United Kingdom.

Energy Star



The EPA ENERGY STAR Computers program is a partnership effort with computer manufacturers to promote the introduction of

energy-efficient products and to reduce air pollution caused by power generation.


Companies participating in this program introduce personal computers, printers, monitors, or fax machines that power down when they are not being used. This feature will cut the energy used by up to 50 percent. Compaq is proud to be a participant in this program.

As an Energy Star Partner, Compaq Computer Corporation has determined that this product meets the Energy Star guidelines for energy efficiency.

Power supply information

If your power supply fails, replace it with the Compaq replacement part or other UL LISTED Direct Plug-In Power Unit marked "Class 2" and rated 30 Vdc at 500 mA to 830 mA.

Safety information

- If your product is NOT marked with this symbol , it MUST be connected to an electrical outlet that is properly grounded.
- The power cord must be connected to an electrical outlet that is near the product and easily accessible.
- Refer service or repairs, other than those described in the operating instructions, to a professional service person.
- This product is designed, tested, and approved to meet strict global safety standards with the use of specific authorized components. The safety features of some parts may not always be obvious. The printer manufacturer is not responsible for the use of other replacement parts.





Index

- A**
 - aligning print cartridges 9
- B**
 - banding 18
 - banner paper
 - loading 2
 - setting recommendations 5
 - bidirectional communications
 - disabling 13
 - problems
 - indicators 13
 - blinking lights
 - Paper Feed 20
 - Paper Feed light 20
 - Power light 20
 - buttons, Clean Print Nozzles 11
- C**
 - cards
 - loading 2
 - setting recommendations 5
 - cartridges, print
 - aligning 9
 - installing 8
 - preserving 12
 - removing 8
 - replacing 8
 - CD-ROM, using to install
 - software 21
 - characters, missing or unexpected 19
 - contacts, print nozzle 12
 - Control Program
 - using 7
 - align print cartridges 9
 - custom size paper
 - loading 2
 - setting recommendations 5
- D**
 - default settings 5
 - diskettes
 - installing software 22
 - DOS printing 22
 - downloaded printer driver, installing 21
- E**
 - electronic emission notices 22
 - Energy Star 23
 - envelopes
 - loading 2
 - setting recommendations 5
 - error messages
 - Ink Low 20
 - Paper Jam 16, 20
 - Printer Offline 15
- European Community directives conformity 23
- F**
 - Federal Communications Commission Compliance Information Statement 22
 - flashing lights 20
 - foils
 - loading 2
 - setting recommendations 6
- G**
 - greeting cards
 - loading 2
 - setting recommendations 5
- I**
 - improving print quality 9
 - index cards
 - loading 2
 - setting recommendations 5
 - Industry Canada Compliance Statement 23
 - Ink Low message 20

- installing
 - print cartridge 8
 - printer software 21
- intermittent printing 18
- Internet printing, Web Smoothing 4
- iron-on transfers
 - loading 2
 - setting recommendations 6

J

- Japanese VCCI notice 23

L

- lights
 - Paper Feed 20
 - patterns 20
 - Power 8
- loading paper 1

M

- margins, minimum settings 17
- messages, error
 - Ink Low 20
 - Paper Jam 20
 - Printer Offline 15

N

- notices
 - electronic emission 22
 - Energy Star 23
 - European Community Directives Conformity 23
 - FCC statement 22
 - Industry Canada compliance statement 23
 - Japanese VCCI 23

- safety information 24
- nozzles, print
 - cleaning 11
 - wiping 12

O

- ordering supplies 7

P

- Paper Feed light 20
- paper loading 1
- parallel cable
 - connection problems 13
 - specifications 13
- photo paper
 - problems 19
 - setting recommendations 5
- postcards
 - loading 2
 - setting recommendations 5
- Power light
 - flashing 20
- print cartridges
 - aligning 9
 - installing 8
 - preserving 12
 - removing 8
 - replacing 8
 - wiping nozzles 12
- print nozzle contacts
 - wiping 12
- print nozzles
 - cleaning 11
 - wiping 12
- print quality
 - banding 18
 - different colors 18
 - faded colors 19
 - improving 9
 - missing colors 11, 18
 - smudged 17

- too dark 17
- troubleshooting 17
- printer driver
 - installing
 - CD-ROM 22
 - diskettes 22
 - downloaded 21
- Printer Properties
 - customizing 3
 - opening
 - from an application 3
 - from Windows 3
 - setting recommendations 5
 - tabs 3, 4
- printer software
 - installing
 - CD-ROM 21
 - diskettes 21
 - downloaded driver 21
 - Printer Properties 3
 - uninstalling 22
- printing
 - from DOS 22
 - using Web Smoothing 4
- printing problems
 - color quality 18
 - faded colors 19
 - intermittent 18
 - missing colors 11, 18
 - paper feeding 16
 - paper jam 16
 - paper misfeeds 16

R

- removing print cartridge 8
- reverse page order 4

S

- safety information 24

- setting recommendations
 - banner paper 5
 - cards 5
 - custom size paper 5
 - envelopes 5
 - iron-on transfers 6
 - normal 5
 - photo papers 5
 - transparencies 6
- sheet feeder
 - locating 1
- software applications
 - Control Program 7
- software, printer
 - installing 21
 - uninstalling 22
- specialty papers
 - banner paper 2
 - custom sized paper 2
 - envelopes 2
 - iron-on transfers 2
 - photo paper 2
 - transparencies 2
- paper feed problems 16
- paper jam 16
- paper sticks together 19
- print quality 17
- printer software installation
 - installing 21
 - uninstalling 22
- slow print 13
- two-way communications 13
- two-way communications
 - disabling 13
 - problems
 - indicators 13

U

- uninstalling
 - printer software 22
- United Kingdom
 - Telecommunications Act 1984 23
- USB cable connection
 - problems 14

T

- test page
 - alignment 10
 - does not print 15
 - nozzle test pattern 11
- transparencies
 - loading 2
 - problems 19
 - setting recommendations 6
- troubleshooting
 - blank pages 14
 - color quality 18
 - doesn't print 13
 - envelopes don't print 16
 - error messages 20
 - faded colors 19
 - flashing lights 20
 - missing colors 18

W

- Web Smoothing 4
- Windows 2000
 - installing 21
 - User's Guide 1
- Windows NT 4.0
 - installing 21
 - User's Guide 1

