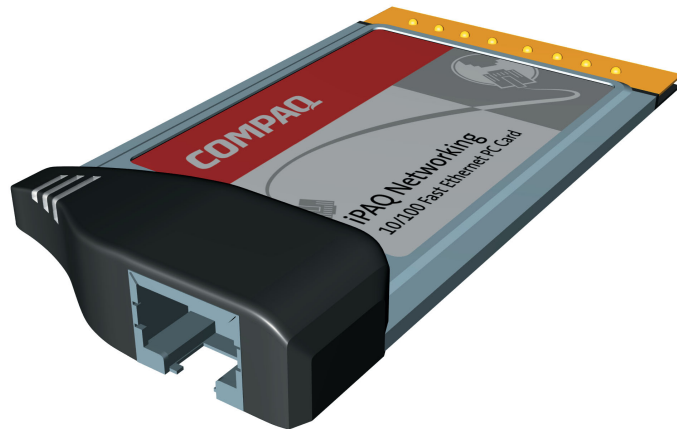


iPAQ Networking 10/100 Fast Ethernet PC Card



Installation and Setup Guide

Copyrights, Trademarks, and Disclaimer

© 2001 Compaq Computer Corporation

COMPAQ and the Compaq logo are registered with the U. S. Patent and Trademark Office.

iPAQ is a trademark of Compaq Information Technologies Group, L. P.

Microsoft and Windows are trademarks of Microsoft Corporation.

All other product names mentioned herein may be trademarks or registered trademarks of their respective companies.

Compaq shall not be liable for technical or editorial errors or omissions contained herein. The information in this document is subject to change without notice.

The information in this publication is subject to change without notice and is provided "AS IS" WITHOUT WARRANTY OF ANY KIND. THE ENTIRE RISK ARISING OUT OF THE USE OF THIS INFORMATION REMAINS WITH RECIPIENT. IN NO EVENT SHALL COMPAQ BE LIABLE FOR ANY DIRECT, CONSEQUENTIAL, INCIDENTAL, SPECIAL, PUNITIVE, OR OTHER DAMAGES WHATSOEVER (INCLUDING WITHOUT LIMITATION, DAMAGES FOR LOSS OF BUSINESS PROFITS, BUSINESS INTERRUPTION, OR LOSS OF BUSINESS INFORMATION), EVEN IF COMPAQ HAS BEEN ADVISED OF THE POSSIBILITY OF SUCH DAMAGES. THE FOREGOING SHALL APPLY REGARDLESS OF THE NEGLIGENCE OR OTHER FAULT OF EITHER PARTY AND REGARDLESS OF WHETHER SUCH LIABILITY SOUNDS IN CONTRACT, NEGLIGENCE, TORT, OR ANY OTHER THEORY OF LEGAL LIABILITY, AND NOTWITHSTANDING ANY FAILURE OF ESSENTIAL PURPOSE OF ANY LIMITED REMEDY.

The limited warranties for Compaq products are exclusively set forth in the documentation accompanying such products. Nothing herein should be construed as constituting a further or additional warranty.

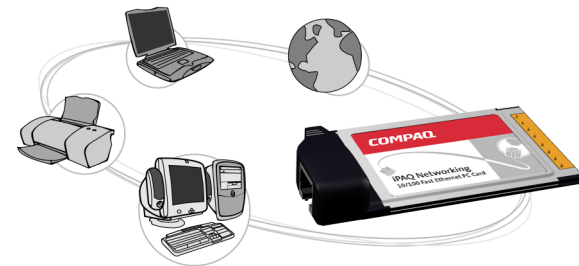
iPAQ Networking 10/100 Fast Ethernet PC Card
Installation and Setup Guide
First Edition (June 2001)

Contents

Introduction	2
Features and Benefits	3
What's in the Box?	4
What Else Do I Need?	4
Understanding the Product	5
Installing the Product	5
Overview	5
Installing the Drivers	5
Installing the Ethernet PC Card	7
Connecting to the Network	7
Installing the Software	7
Technical Specifications	8
For More Information	8
Registration	8
Troubleshooting	8
Glossary	8
Technical Support	8
Regulatory Compliance	9
Modifications	9
Declaration of Conformity	9

Introduction

Welcome to iPAQ Networking! Thank you for purchasing the iPAQ Networking 10/100 Fast Ethernet PC Card. The Compaq family of iPAQ Networking products will help you simplify your life and connect your world. With iPAQ Networking, you can connect all of your PCs for simultaneous access to files, printers, peripheral devices, and the Internet.



This guide is designed to help you:

- > Get acquainted with the features of your new Ethernet PC Card
- > Install the product correctly
- > Locate technical specifications, customer service information, and troubleshooting
- > Learn how to use your network

Features and Benefits

The iPAQ Networking 10/100 Fast Ethernet PC Card is a slim Ethernet Card that connects your computer to your network when used with an Ethernet hub, switch, or router (sold separately). Key product features and benefits are listed below.

<i>Features</i>	<i>Benefits</i>
High Performance Networking	Your Ethernet PC Card supports full 32-bit CardBus, so it can work with 10Mbps or 100Mbps environments. Its Auto Negotiation feature automatically detects the speed of the network and adjusts accordingly.
Simple, Integrated Design	Networking connector is built into the Ethernet PC Card so there are no extra connectors to lose or break.
Easy to Set Up and Use	iPAQ Networking solutions come with easy-to-follow instructions and intelligent software that guides you through the installation process. You can easily set up your network to share Internet access, share files and printers, or play the latest multi-player PC games.
Advanced Bridging Technology	Even if you combine Ethernet, wireless, or phone line products in your networking environment, the iPAQ Networking software has the power to bring them together, or create a bridge, so they can operate as one integrated network.
Internet Access Sharing	iPAQ Networking allows you to share a single Internet account and let more than one computer use it at the same time! Simultaneous Web surfing works with cable and DSL high-speed Internet access as well as with standard dial-up.

<i>Features</i>	<i>Benefits</i>
Printer and Device Sharing	Share devices connected to one computer with other computers on the network. You can share printers, scanners, Zip drives, and CD-ROMs.
File Sharing	Move or copy files between all of your networked PCs quickly and easily.
Multi-Player Gaming	Play real-time games with anyone on the network. When you make a move or score points, the other player sees the action on his connected PC
Digital Music and Picture Sharing	Easily play digital music and view pictures anywhere on your network.

What's in the Box?

- > **iPAQ Networking 10/100 Fast Ethernet PC Card.** This is the device that links your computer to the network.
- > **Quick Setup Guide.** Easy-to-follow images and step-by-step instructions help you quickly install the product.
- > **iPAQ Networking CD.** This CD contains Internet sharing and networking software, user and troubleshooting guides, and hardware drivers.
- > **Warranty card.** This card explains the iPAQ Networking standard warranty.

What Else Do I Need?

To use the iPAQ Networking 10/100 Fast Ethernet PC Card, you need a PC with the following components:

- > An empty PC Card slot

Note: If you are having trouble locating this slot, refer to your computer user's manual, or consult the manufacturer of your computer.

- > Intel® Pentium processor or higher

- > At least 24MB RAM

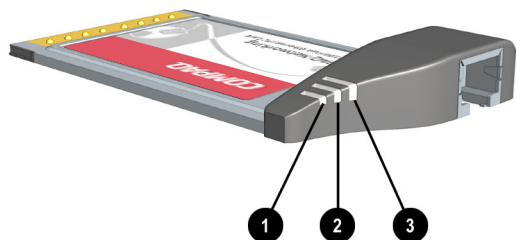
- > Microsoft® Windows® 98, 98SE, ME, or 2000

Note: Your Ethernet PC Card only provides the hardware needed to install networking capabilities on a single PC. A complete Ethernet network requires a local hub, switch, or router, such as the iPAQ Networking 10/100 Fast Ethernet 5-Port Auto Sensing Switch. This additional device provides a central connection point for all computers on your network.

Note: You will also need a twisted-pair Ethernet cable with an RJ-45 jack (purchased separately) to connect your computer to the network. This type of cable is commonly available at computer stores. The maximum desired cable length is 100 meters (328 feet). Use Category 3, 4, or 5 cable for connection to 10 Mbps Ethernet, or Category 5 cable for connection to 100 Mbps Fast Ethernet.

Understanding the Product

Before starting installation, familiarize yourself with the design of the iPAQ Networking 10/100 Fast Ethernet PC Card.



Item	LED	Description
1	10M	On (green) indicates the Ethernet PC Card is connected to a 10Base-T Ethernet network.
2	100M	On (green) indicates the Ethernet PC Card is connected to a 100Base-TX Ethernet network.
3	ACT	Flashing (green) indicates the computer is transmitting or receiving packets.

Installing the Product

Overview

Installing the product involves several steps:

- > **Install drivers**
- > **Install Ethernet PC Card**
- > **Connect Ethernet PC Card to the network**
- > **Install iPAQ Networking software**

The following pages contain step-by-step procedures for each item on this checklist.

Installing the Drivers

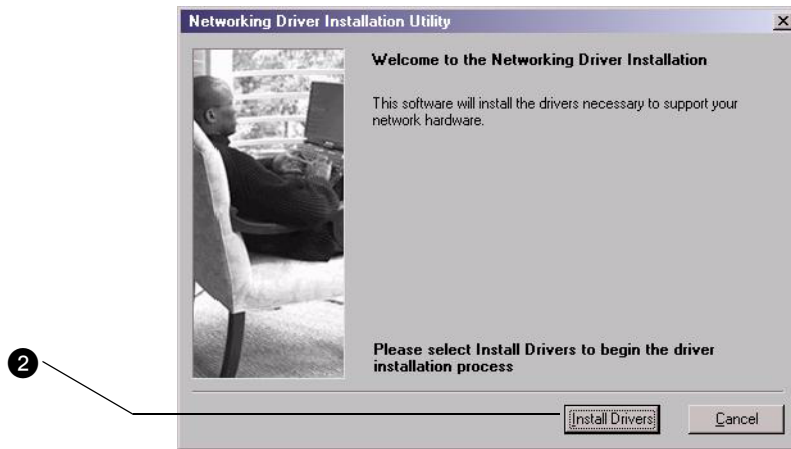
1. Insert the **iPAQ Networking CD** into the CD-ROM. The iPAQ Networking menu should display automatically.



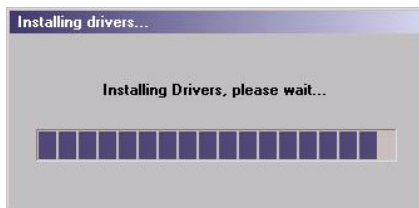
Note: If the menu does not appear, select the **Start** button and choose **Run**. Type in "**D:\setup.exe**" where "**D:**" is the location of your CD ROM drive. Then click **OK** to start the iPAQ Networking menu.

2. Click **Install Drivers** ❶ to start the driver installation software.

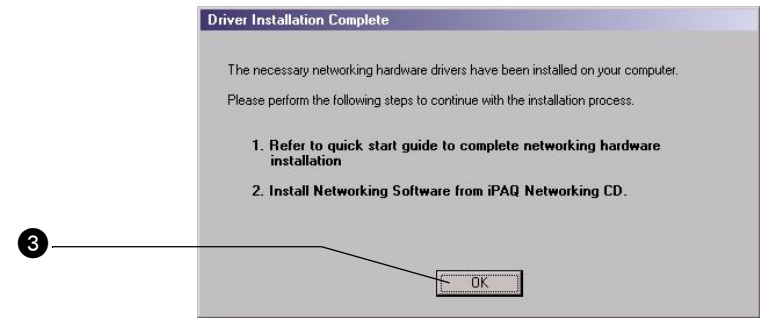
The opening panel of the Network Driver Installation Utility is displayed.



3. Click **Install Drivers** in this panel to start installing the drivers. ❷
A progress indicator is displayed while the files are being installed.



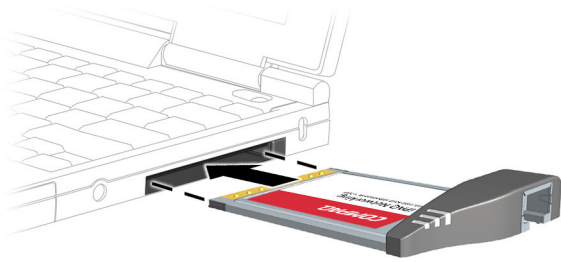
4. When installation is complete, the Driver Installation Complete window is displayed. Click **OK** ❸ to complete the installation.



Complete the hardware installation before proceeding with software installation.

Installing the Ethernet PC Card

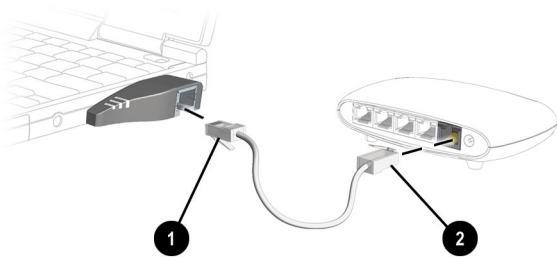
1. Gently slide the Ethernet PC Card into the CardBus slot in your computer.



2. Verify that the card is firmly seated in the slot.
The system will automatically detect the presence of your Ethernet PC Card.

Connecting to the Network

Connect your Ethernet PC Card to a local network hub using a Category 5 UTP cable (sold separately).



1. Connect one end of the cable to the RJ-45 port on the Ethernet PC Card. ①

2. Connect the other end of the cable to any available station port on a network hub. ②

Note: When inserting an RJ-45 plug, be sure the tab on the plug clicks into position so that it is properly seated.

Installing the Software

When you are finished installing the drivers and hardware, you are now ready to install the iPAQ Networking software. Please refer to the [Software Documentation](#) on this CD.

Technical Specifications

Model	HNE-300
Bus Type	32-Bit CardBus
Port	(1) RJ-45, auto senses 10/100 speeds and full/half duplex
LE D Indicators	10M - On (green) indicates the Ethernet PC Card is connected to a 10Base-T Ethernet network. 100M - On (green) indicates the Ethernet PC Card is connected to a 100Base-TX Ethernet network. ACT - Flashing (green) indicates the computer is transmitting or receiving packets.
Standards Conformance	Complies with PC Card 1995 CardBus standards
Standards	IEEE 802.3 10Base-T, IEEE 802.3u 100Base-TX, IEEE 802.3X, PCMCIA CardBus, PC Card 1997
Certification	FCC Part 15B, CE
Cable	10Base-T Category 3 or better 100Base-TX Category 5 or better
Access Protocol	CSMA/CD
Data Rate	Full Duplex 20Mbps or 200Mbps Half Duplex 10Mbps or 100Mbps
Driver Support	Microsoft® Windows® 98, 98SE, Millennium, 2000
Width	32-bit bus
Power	+3.3V / 295mA max. for RJ-45 transceiver
Temperature	0 ~ 55 degrees Celsius
Humidity	10% to 95%
Distance	100 m hub to node

For More Information

All the information you need to get your network up and running is on this CD. To learn more about Compaq's other networking products, or if you need additional information regarding components or technology, the Compaq website at compaq.com/athome features a variety of resources. Here's where you can find other sources of information:

Registration

You can register your new product online at the Compaq website compaq.com/register.

Troubleshooting

If you have problems with your Ethernet PC Card, check the [Troubleshooting Guide](#) on this CD for quick resolution to the most common situations.

Glossary

A [Glossary](#) on this CD provides a brief list of commonly used technical terms and their definitions.

Technical Support

If you have a networking problem not addressed in the [Troubleshooting Guide](#) on this CD, Compaq offers technical support online at compaq.com/consumersupport. You can also call 888-302-7358.

Regulatory Compliance

This equipment has been tested and found to comply with the limits for a Class B digital device, pursuant to Part 15 of the FCC Rules. These limits are designed to provide reasonable protection against harmful interference in a residential installation. This equipment generates, uses, and can radiate radio frequency energy and, if not installed and used in accordance with the instructions, may cause harmful interference to radio communications. However, there is no guarantee that interference will not occur in a particular installation. If this equipment does cause harmful interference to radio or television reception, which can be determined by turning the equipment off and on, the user is encouraged to try to correct the interference by one or more of the following measures:

- Reorient or relocate the receiving antenna.
- Increase the separation between the equipment and receiver.
- Connect the equipment into an outlet on a circuit different from that to which the receiver is connected.
- Consult the dealer or an experienced radio or television technician for help.

Modifications

The FCC requires the user to be notified that any changes or modifications made to this device that are not expressly approved by Compaq Computer Corporation may void the user's authority to operate the equipment.

Declaration of Conformity for products marked with the FCC logo - United States only

This device complies with Part 15 of the FCC Rules. Operation is subject to the following two conditions: (1) this device may not cause harmful interference, and (2) this device must accept any interference received, including interference that may cause undesired operation.

For questions regarding your product, contact:
Compaq Computer Corporation
P. O. Box 692000, Mail Stop 530113
Houston, Texas 77269-2000
Or, call 1-800-652-6672 (1-800-OK COMPAQ)

For questions regarding this FCC declaration, contact:
Compaq Computer Corporation
P. O. Box 692000, Mail Stop 510101
Houston, Texas 77269-2000
Or, call (281) 514-3333

To identify this product, refer to the part, series, or model number found on the product.