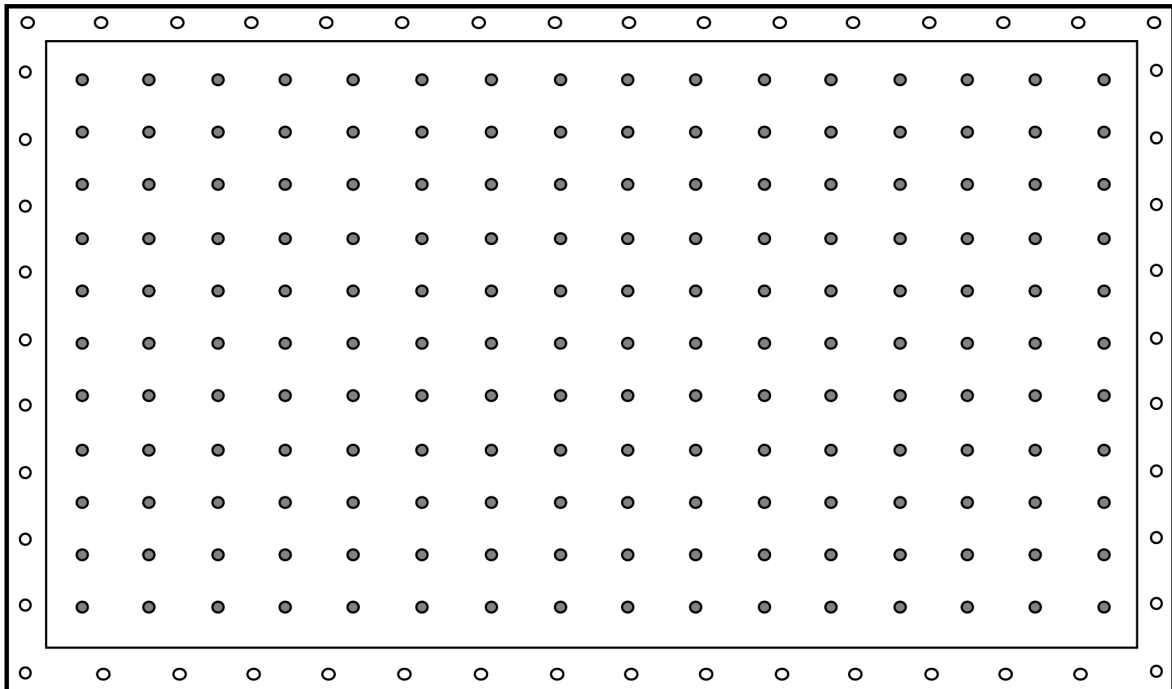


MotionDrapeTM LED

User Manual




CHAUVET[®]
Value • Innovation • Performance
 It's
Green Thinking.[™]

TABLE OF CONTENTS

1. Before You Begin.....	3
What Is Included	3
Unpacking Instructions	3
<i>Claims</i>	3
Text Conventions	3
Icons	3
Document Information	3
Product at a Glance.....	4
Safety Notes	4
2. Introduction.....	5
Product Overview	5
Product Dimensions	5
3. Setup	6
AC Power.....	6
<i>Fuse Replacement</i>	6
Mounting	7
<i>Orientation</i>	7
<i>Rigging</i>	7
4. Operation	8
Control Panel Operation	8
Menu Map	8
Configuration (DMX).....	8
<i>Starting Address</i>	8
Configuration (Standalone).....	9
<i>Sound Active Mode</i>	9
<i>Automatic Mode</i>	9
DMX Channel Assignments and Values.....	10
<i>8-CH</i>	10
5. Technical Information	11
General Troubleshooting	11
Contact Procedure	12
CHAUVET® Contact Information.....	12
Returning Products to CHAUVET®.....	12
6. Technical Specifications	13

1. BEFORE YOU BEGIN

What Is Included

- MotionDrape™ LED
- MotionDrape™ Controller
- Power Cord
- Signal Cable
- Carrying Bag
- Replacement LEDs
- Reusable Zip Ties (Tie Wraps)
- Warranty Card
- Quick Reference Guide

Unpacking Instructions

Immediately upon receipt, carefully unpack this product and check the container to make sure you have received all the parts indicated above in good condition.

Claims




If the container or the material inside the container (this product and any other accessory included) appears damaged from shipping, or shows signs of mishandling, notify the carrier immediately, not CHAUVET®, upon receipt of the damaged merchandise. Failure to do so in a timely manner may invalidate your claim with the carrier. In addition, retain the container and all the packing material for inspection.

For other issues such as missing components or parts, damage not related to shipping, or concealed damage, file a claim with CHAUVET® within 7 days of receiving the merchandise.

Text Conventions

Convention	Meaning
1~512	A range of values
50/60	A set of values of which only one can be chosen
Settings	A menu option not to be modified
Menu > Settings	A sequence of menu options to be followed
<ENTER>	A key to be pressed on the product's control panel
ON	A value to be entered or selected

Icons

Icon	Meaning
	Critical installation, configuration, or operation information. Failure to comply with this information could cause the product not to work, damage it, or cause harm to the operator.
	Important installation or configuration information. Failure to comply may keep the product from working correctly.
	Useful information.

Document Information

The information and specifications contained in this document are subject to change without notice. CHAUVET® assumes no responsibility or liability for any errors or omissions that may appear in this manual. CHAUVET® reserves the right to update the existing document or to create a new document to correct any errors or omissions.

You can download the latest version of this document from www.chauvetlighting.com.

© Copyright 2012 CHAUVET®. All rights reserved.

Electronically published by CHAUVET® in the United States of America.

Author	Date	Editor	Date
A. Diaz	2/13/12	S. Graham	7/23/12

Product at a Glance

Use on Dimmer	⊘	Auto Programs	✓
Outdoor Use	⊘	Auto-ranging Power Supply	✓
Sound Activated	✓	Replaceable Fuse	✓
DMX	✓	User Serviceable	⊘
Master/Slave	✓	Duty Cycle	⊘

Safety Notes

Please read the following Safety Notes carefully before working with this product. They include important safety information about its installation, usage, and maintenance.



- Always connect this product to a grounded circuit to avoid the risk of electrocution.
- Always disconnect this product from the power source before cleaning it or replacing the fuse.
- Avoid direct eye exposure to the light source while the product is on.
- Make sure the power cord is not crimped or damaged.
- Never disconnect this product from power cord by pulling or tugging on the cord.
- Make sure there are no flammable materials close to the unit while operating.
- Do not touch this product's housing when operating because it may be very hot.



- Always make sure that the voltage of the outlet to which you are connecting this product is within the range stated on the decal or rear panel of the product.
- This product is for indoor use only! (IP20) To prevent risk of fire or shock, do not expose this product to rain or moisture.
- Always install this product in a location with adequate ventilation, at least 20 in (50 cm) from adjacent surfaces.
- Be sure that no ventilation slots on the unit's housing are blocked.
- Never connect this product to a dimmer.
- Make sure to replace the fuse with another of the same type and rating.
- Never carry this product from the power cord or any moving part.
- The maximum ambient temperature (Ta) is 104° F (40° C). Do not operate this product at higher temperatures.
- In the event of a serious operating problem, stop using the unit immediately.
- Never try to repair this product. Repairs carried out by unskilled people can lead to damage or malfunction. Please contact the nearest authorized technical assistance center.



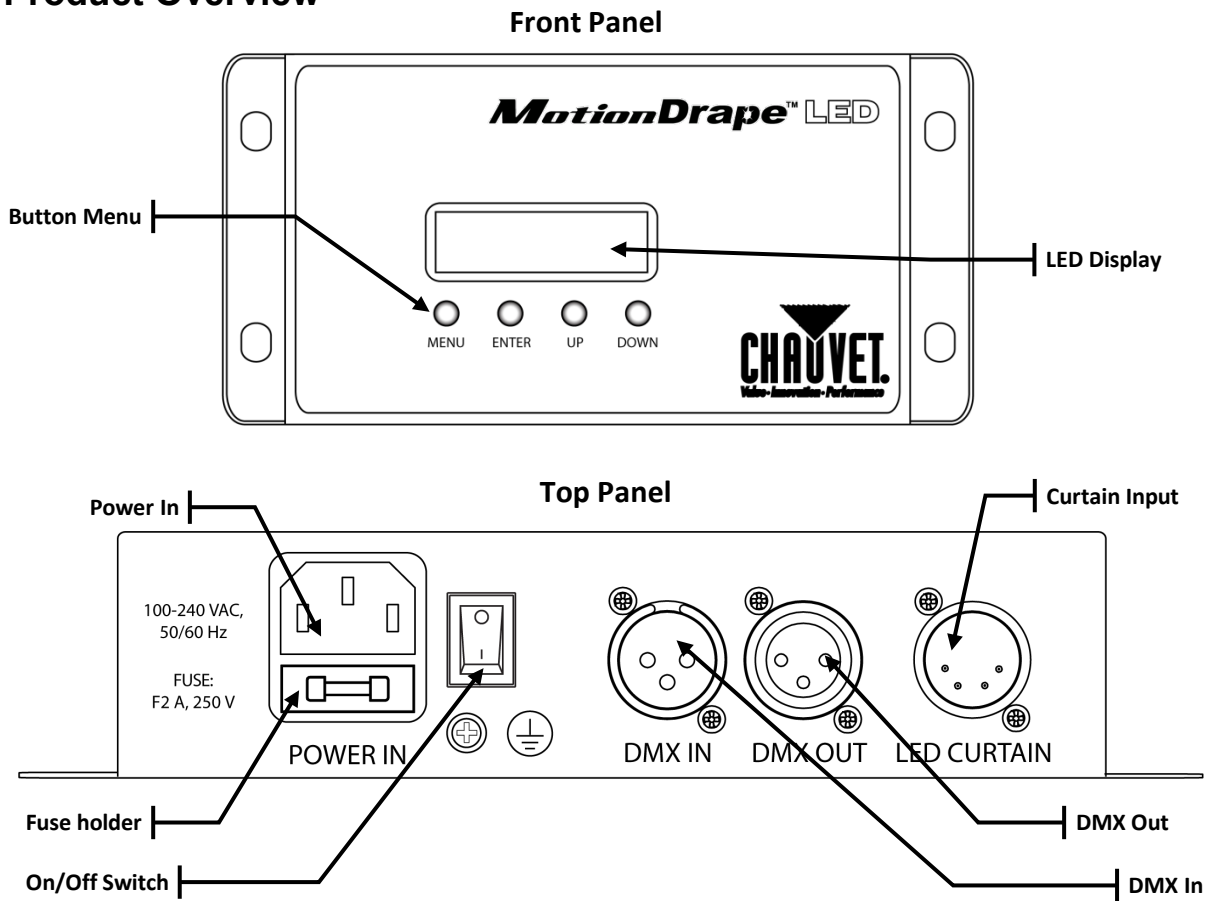
- **This product is NFPA-certified fire retardant material.**



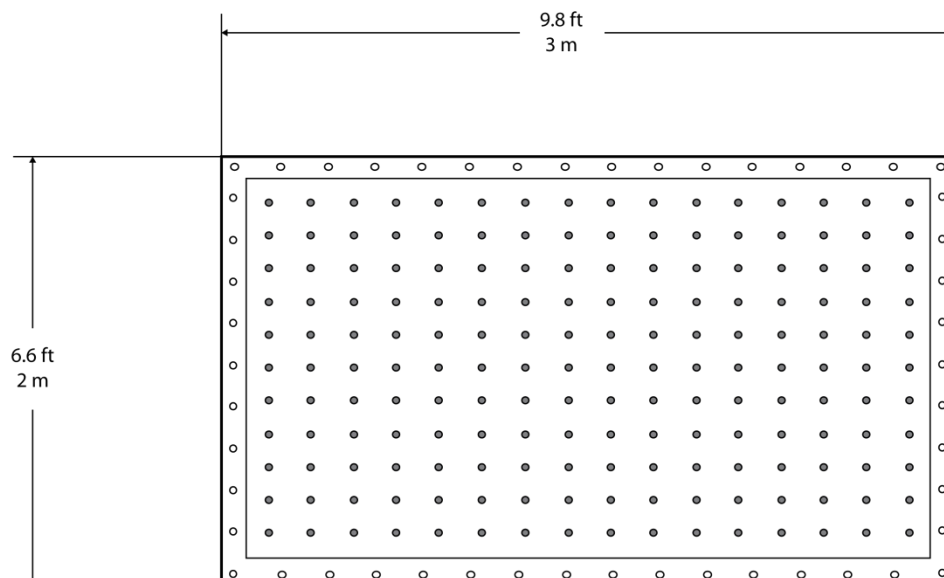
- Keep this User Manual for future consultation. If you sell this product to another user, be sure that they also receive this document.

2. INTRODUCTION

Product Overview



Product Dimensions



3. SETUP

AC Power

This product has an auto-ranging power supply and can work with an input voltage range of 100~240 VAC, 50/60 Hz.

To determine the power requirements for this product (circuit breaker, power outlet, and wiring), use the current value listed on the label affixed to the product's back panel, or refer to the product's specifications chart. The listed current rating indicates the product's average current draw under normal conditions.



Always connect this product to a protected circuit (circuit breaker or fuse), making sure that it has an appropriate electrical ground to avoid the risk of electrocution or fire.



Never connect this product to a rheostat (variable resistor) or dimmer circuit, even if the rheostat or dimmer channel serves only as a 0 to 100% switch.

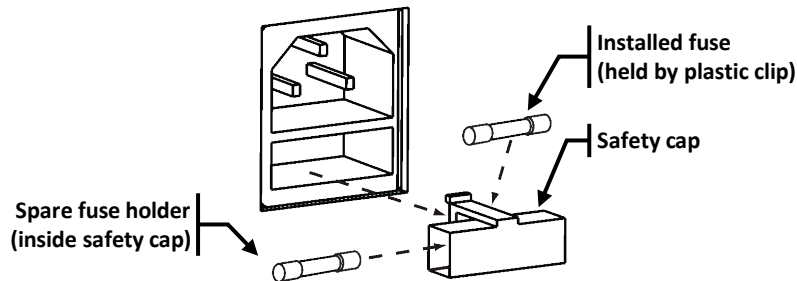
Fuse Replacement

Follow the instructions below to change the fuse, if necessary.



Disconnect this product from the power outlet before replacing the fuse.

1. Wedge the tip of a flat head screwdriver into the slot of the fuse holder and pry out of its housing.
2. Remove the blown fuse from its holder and replace with a fuse of the exact same type and rating.
3. Insert the fuse holder back into place, and reconnect power.



This product ships with no spare fuse. The safety cap does have room for a spare.



Always replace a blown fuse of the same type and rating.

Mounting

Before mounting this product, read and follow the safety recommendations indicated in the *Safety Notes* section (page 2 of this manual).

Orientation The MotionDrape™ LED may be mounted in any position; however, make sure adequate ventilation is provided around the product.

Rigging Before deciding on a location for this product, always make sure that it will be easy to access the unit for maintenance and programming purposes.

Make sure that the structure onto which you are mounting this product can support its weight. Please see the *Technical Specifications* section of this manual for weight information.

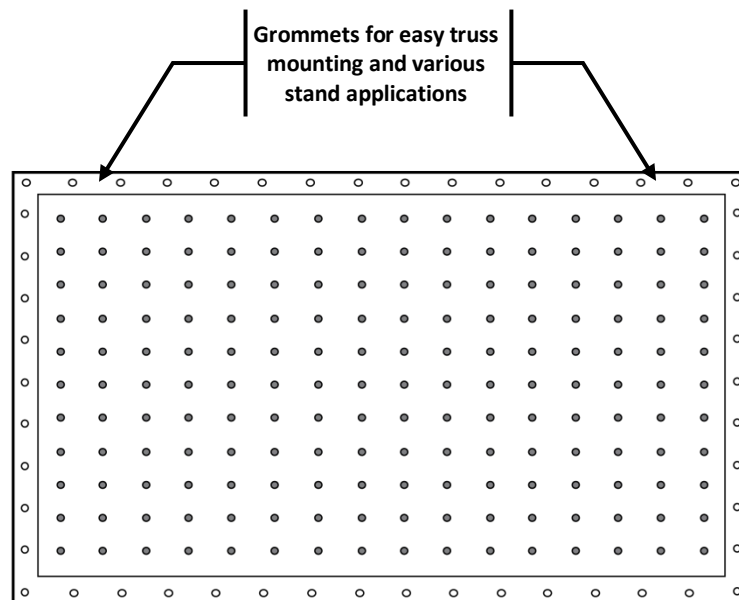
Mount the product securely to a rigging point, whether an elevated platform or a truss.

Reusable zip ties (tie wraps) are provided with the MotionDrape™ LED for quick and easy mounting.



This product can be used with the CHAUVET® CH-31 portable truss or any similar portable trussing system.

Mounting Diagram



4. OPERATION

Control Panel Operation

To access the control panel functions, use the four buttons located underneath the display. Please refer to the Product Overview (page 5) to see the buttons location on the control panel.

Button	Function
<MENU>	Press to find an operation mode or to back out of the current menu option
<ENTER>	Press to activate a menu option or a selected value
<UP>	Press to scroll up the list of options or to find a higher value
<DOWN>	Press to scroll down the list of options or to find a lower value

Menu Map

Mode	Programming Steps		Description
Version	Software Version		Shows the software version number
Automatic	NO		Disables unit's auto mode function
	YES		Enables unit's auto mode function
Sound	NO		Disables unit's sound mode function
	YES		Enables unit's sound mode function
DMX Mode	NO		Disables unit's DMX512 mode function
	YES	1~512	Enables unit's DMX512 mode and sets starting address
Speed	1~9		Selects how fast the auto mode program runs
Program	1~30	NO	Disables numbered program running in sequence in auto or sound mode
		YES	Enables numbered program running in sequence in auto or sound mode

Configuration (DMX)

Set this product in DMX mode to control it with a DMX controller.

1. Connect this product to a suitable power outlet.
2. Turn this product on.
3. Connect a DMX cable from the DMX output of the DMX controller to the DMX input socket of this product.

Starting Address

When selecting a starting DMX address, always consider the number of DMX channels the selected DMX mode uses. If you choose a starting address that is too high, you could restrict the access to some of the product's channels.

The MotionDrape™ LED uses up to 8 DMX channels in its 8-channel DMX mode, which defines the highest configurable address to **505**.

If you are not familiar with the DMX protocol, download the *DMX Primer* from www.chauvetlighting.com.

To select the starting address, do the following:

1. Press <MENU> repeatedly until **Dmx512** shows on the display.
2. Press <ENTER>.
3. Press <UP> to select **Yes** in the menu.
4. Press <ENTER>. **Address** should appear on the screen.
5. Use <UP> or <DOWN> to select the starting address.
6. Press <ENTER>.

Configuration (Standalone)

Set this product in one of the standalone modes to control it without a DMX controller.

1. Connect this product to a suitable power outlet.
2. Turn this product on.



Never connect a product that is operating in any standalone mode, whether Static, Automatic, or Sound to a DMX string connected to a DMX controller. This is because products in standalone mode may transmit DMX signals that could interfere with the DMX signals from the controller.

Sound Active Mode

To enable the Sound Active mode, do the following:

1. Press **<MENU>** repeatedly until **Sound** shows on the display.
2. Press **<ENTER>**.
3. Use **<UP>** or **<DOWN>** to select **Yes**.
4. Press **<ENTER>**.
5. Turn the music on until the product responds to the beat of the music.



The product will only respond to low frequencies of the music (bass and drums).

Automatic Mode

To enable the Automatic Mode, follow the instructions below:

1. Press **<MENU>** repeatedly until **Automatic** shows on the display.
2. Press **<ENTER>**.
3. Use **<UP>** or **<DOWN>** to select **Yes**.
4. Press **<ENTER>**.

Master/Slave Mode

This mode allows a single unit (the “master”) to control the actions of one or more units (the “slaves”) without the need of a DMX controller. The master unit will be set to operate in either Automatic or Sound-Active mode, while the slave units will be set to operate in Slave Mode. Once set and connected, the slave units will operate in unison with the master unit.

Configure the units as indicated below.

Slave units:

1. Press **<MENU>** repeatedly until **8-CH** shows on the display.
2. Press **<ENTER>** to accept.
3. Use **<UP>** or **<DOWN>** to select the starting address to: **d001**.
4. Press **<ENTER>**.
5. Connect the DMX input of the first slave unit to the DMX output of the master unit.
6. Connect the DMX input of the subsequent slave units to the DMX output of the previous slave unit.
7. Finish setting and connecting all the slave units.

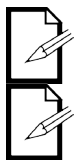
Master unit:

1. Set the master unit to operate in either Automatic or Sound-Active mode, as previously indicated.
2. Make the master unit the first unit in the DMX daisy chain.



Wait until all the slave units are configured and connected before connecting the master unit to the DMX daisy chain.

Never connect a DMX controller to a DMX string configured for Master/Slave operation because it may interfere with the signals from the master unit.



Do not connect more than 31 slave units to the master unit.

The MotionDrape™ and MotionFaçade™ can also be used together in this mode with the same configuration.

DMX Channel Assignments and Values

8-CH	Channel	Function	Value	Setting
1	Dimmer		000 ⇔ 007	No function
			008 ⇔ 255	0~100%
2	Strobe		000 ⇔ 010	No function
			011 ⇔ 255	0~100%
3	Red		000 ⇔ 255	0~100%
4	Green		000 ⇔ 255	0~100%
5	Blue		000 ⇔ 255	0~100%
6	Programs 1-15		000 ⇔ 015	No function
			016 ⇔ 031	Falling Star
			032 ⇔ 047	Diagonal Color Bands
			048 ⇔ 063	Color Pattern Chase
			064 ⇔ 079	Inward Arrow (L-R)
			080 ⇔ 095	Color Stack
			096 ⇔ 111	Multi-Color Freeway
			112 ⇔ 127	Color Wave (L-R)
			128 ⇔ 143	Color Wave (R-L)
			144 ⇔ 159	Color Bar Chase (L-R)
			160 ⇔ 175	Color Bar Chase (R-L)
			176 ⇔ 191	Windmill
			192 ⇔ 207	Fan
			208 ⇔ 223	Whirlpool
			224 ⇔ 239	Falling Snow
			240 ⇔ 255	Multi Box Frenzy
7	Programs 16-30		000 ⇔ 015	No function
			016 ⇔ 031	Center Burst
			032 ⇔ 047	Outer Burst
			048 ⇔ 063	EQ Effect
			064 ⇔ 079	Rolling Color
			080 ⇔ 095	Horizontal Stacking
			096 ⇔ 111	Inner Zone
			112 ⇔ 127	Outer Zone
			128 ⇔ 143	Diamond Spread
			144 ⇔ 159	Single Diamond Squeeze
			160 ⇔ 175	Follow The Leader
			176 ⇔ 191	Crisscross
			192 ⇔ 207	X-Factor
			208 ⇔ 223	Double Diamond Squeeze
			224 ⇔ 239	Red X Factor
			240 ⇔ 255	Multicolor Rain
8	Speed		000 ⇔ 255	0~100%

5. TECHNICAL INFORMATION

General Troubleshooting

Symptom	Possible Cause(s)	Possible Action(s)
General low light intensity	Dirty LEDs	Clean the MotionDrape™ LED drape regularly
One LED in an LED group failed	Faulty (shorted) LED	Replace faulty LED
All the LEDs in a group failed	Faulty (open) LED	Replace faulty LED
	Faulty LED cable	Replace faulty LED cable
	Faulty LED driver	Replace faulty LED Driver box
Single MotionDrape™ LED controller: All LEDs in a drape failed	Faulty LED driver box	Replace faulty LED Driver box
	Faulty drape output cable	Repair or replace faulty cable
	Faulty MotionDrape™ LED controller	Replace MotionDrape™ LED controller
Multiple MotionDrape™ LED controllers: All LEDs on a controller failed	Faulty MotionDrape™ LED controller	Replace MotionDrape™ LED controller
	If using DMX connection, wrong DMX address on the corresponding controller	Set the starting DMX address correctly
	If using proprietary serial link, wrong Master/Slave setting on the corresponding controller	Set the starting Master/slave mode correctly
	MotionDrape™ LED controller not powered	Check power to the MotionDrape™ LED controller
	Faulty DMX cable	Repair or replace faulty cable
Breaker/Fuse keeps blowing	Excessive circuit load	Check total load placed on the electrical circuit
	Short circuit along the power wires	Check for a short in the electrical wiring (internal and/or external)
MotionDrape™ LED controller does not power up	No power	Check for power on Mains
	Faulty or lose power cord	Check power cord
	Faulty internal power supply	Replace internal power supply
Product is not responding to DMX	Wrong DMX addressing	Check DMX controller and product addressing
	Wrong polarity on the controller	Check polarity switch settings on the controller
	Lose or damaged cables	Check DMX and signal patch cables
	Faulty Main PCB	Replace Display PCB
Loss of signal on some MotionDrape™ LED controllers	Non compatible signal patch cables	Use only compatible cables
	Bouncing signals	Install terminator as suggested
	Long cable / Low level signal	Do not exceed maximum recommended length
	Too many products	Install an optically coupled DMX splitter after unit #32.
	Interference from AC wires	Keep DMX and signal patch cables separated from power cables or black lights



If you still experience problems after trying the above solutions, contact CHAUVET® Technical Support.

Contact Procedure

In case you need to return a product or request support, follow the procedure below:

- If you live in the U.S., contact CHAUVET® World Headquarters (see below).
- If you live in the UK or Ireland, contact CHAUVET® Europe Ltd.(see below).
- If you live in any other country, DO NOT contact CHAUVET®. Instead, contact your distributor of record. Refer to our Web site for contact details of distributors outside the U.S., United Kingdom, or Ireland.

CHAUVET® Contact Information

World Headquarters

CHAUVET®

General Information

Address: 5200 NW 108th Avenue
Sunrise, FL 33351
Voice: (954) 929-1115
Fax: (954) 929-5560
Toll free: (800) 762-1084

Technical Support

Voice: (954) 929-1115 (Press 4)
Fax: (954) 756-8015
Email: tech@chauvetlighting.com

World Wide Web

www.chauvetlighting.com

United Kingdom & Ireland

CHAUVET® Europe Ltd.

General Information

Address: Unit 1C
Brookhill Road Industrial Estate
Pinxton, Nottingham, UK
NG16 6NT
Voice: +44 (0)1773 511115
Fax: +44 (0)1773 511110

Technical Support

Email: uktech@chauvetlighting.com

World Wide Web

www.chauvetlighting.co.uk



If you live outside the U.S., United Kingdom, or Ireland, contact your distributor of record and follow their instructions on how to return CHAUVET® products to them. Visit our website for contact details.

Returning Products to CHAUVET®

Call the corresponding CHAUVET® Tech Support office and request a Return Merchandise Authorization (RMA) number before shipping the product. Be prepared to provide the model number, serial number, and a brief description of the cause for the return.

You must send the merchandise prepaid, in its original box, and with its original packing and accessories. CHAUVET® will not issue call tags.

Clearly label the package with the RMA number. CHAUVET® will refuse any product returned without an RMA number.



DO NOT write the RMA number directly on the box. Instead, write it on a properly affixed label.

Before sending the product, clearly write the following information on a piece of paper and place it inside the box:

- Your name
- Your address
- Your phone number
- The RMA number
- A brief description of the problem

Be sure to pack the product properly. Any shipping damage resulting from inadequate packaging will be your responsibility. As a suggestion, proper UPS packing or double-boxing is always a safe method to use.



CHAUVET® reserves the right to use its own discretion to repair or replace returned product(s).

6. TECHNICAL SPECIFICATIONS

Dimensions and Weight	Length (Drape)	Width (Drape)	Height (Drape)	Weight (Drape)
	9.8 ft (118 in) 3 m (3,000 mm)	0.6 in (15 mm)	6.6 ft (78.7 in) 2 m (2,000 m)	9.8 lbs (4.4 kg)
	Length (Control Box)	Width (Control Box)	Height (Control Box)	Weight (Control Box)
	9.6 in (243 mm)	5.3 in (135 mm)	2 in (50 mm)	1.8 lbs (0.8 kg)
	Note: Dimensions in inches and feet rounded to the nearest decimal digit.			
Power	Power Supply Type	Range		Voltage Selection
	Switching (internal)	100~240 V, 50/60 Hz		Auto-ranging
	Parameter	120 V, 60 Hz		230 V, 50 Hz
	Consumption	51 W		54 W
	Operating	0.4 A		0.2 A
	Fuse	F 2 A, 250 V		F 2 A, 250 V
	Power I/O	US/Worldwide		UK/Europe
	Power input connector	IEC		IEC
	Power output connector	Edison		IEC
	Power Cord plug	Edison (US)		Local plug
Light Source	Type	Quantity		Lifespan
	LED	176		50,000 hours
Thermal	Maximum External Temp.	Cooling System		
	104° F (40° C)	Convection		
DMX	I/O Connectors	Connector Type		Channel Range
	3-pin XLR	Sockets		8
Ordering	Product Name	Item Code		Item Number
	MotionDrape™ LED	15090388		MOTIONDRAPELED



UL 1573
CSA C22.2 No. 166
E113093

