

# D-Link Quick Installation Guide

This product works with the following operating system software: **Windows XP, Windows 2000, Windows Me, Windows 98SE**



**DWL-520+**  
D-Link AirPlus™  
Wireless PCI Adapter

## Before You Begin

You must have at least the following:

- A desktop computer with an available 32-bit PCI slot
- At least a 300 MHz processor and 32 MB of memory
- An 802.11b Access Point (for Infrastructure Mode) or another 802.11b wireless adapter (for Ad-Hoc; Peer-to-Peer networking mode.)

## Check Your Package Contents

These are the items included with your DWL-520+ purchase:

• **DWL-520+ Wireless PCI Adapter**



• **CD-ROM (containing Drivers, Manual and Warranty)**



If any of the above items are missing, please contact your reseller.

## 1 Insert the D-Link CD-ROM Into Your Computer

**Turn on the computer** and **Insert** the **D-Link AirPlus DWL-520+ Driver CD** in the CD-ROM drive.

The step-by-step instructions that follow are shown in **Windows XP**. The steps and screens are similar for the other Windows operating systems.



Do **NOT** install the **DWL-520+ PCI Adapter**

**into your computer before installing the driver software on the D-Link CD!**

# 1

## Insert the D-Link CD (continued)

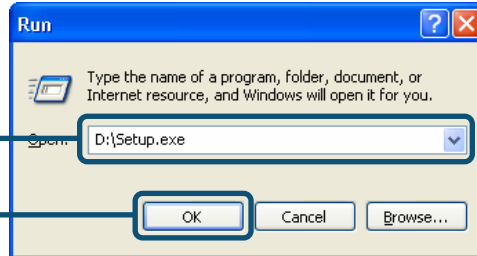
The Install Screen will appear.


Click **Install Driver/PC Utility**



If the CD Autorun function on your computer does not automatically start, type "D:\Setup.exe." If it does start, proceed to the next screen.

Type **"D:\Setup.exe."**

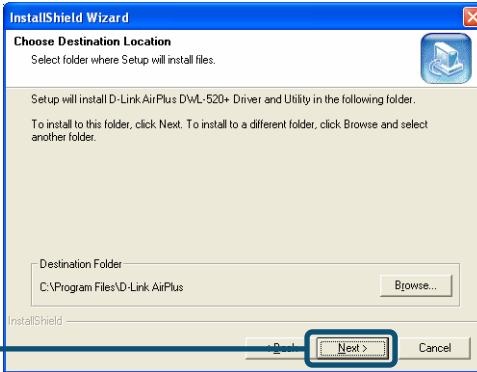


 The letter **"D"** represents the letter of the CD-ROM drive. Your CD-ROM drive may be a different drive letter.

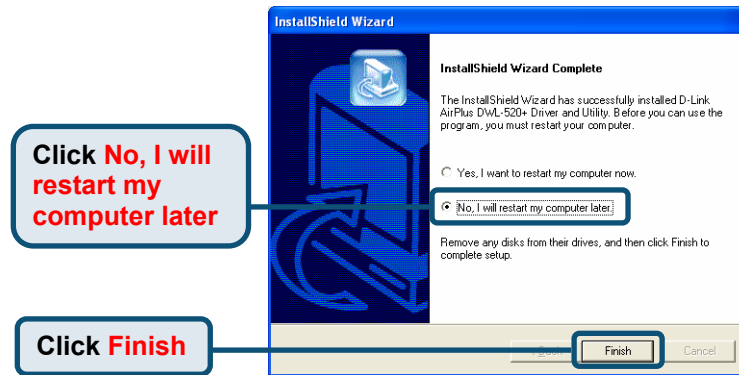
Click **OK**



Click **Next**



Click **Next**



**Shut down** your computer and **unplug** it

## 2 Installing the DWL-520+ Wireless PCI Adapter Into Your Computer

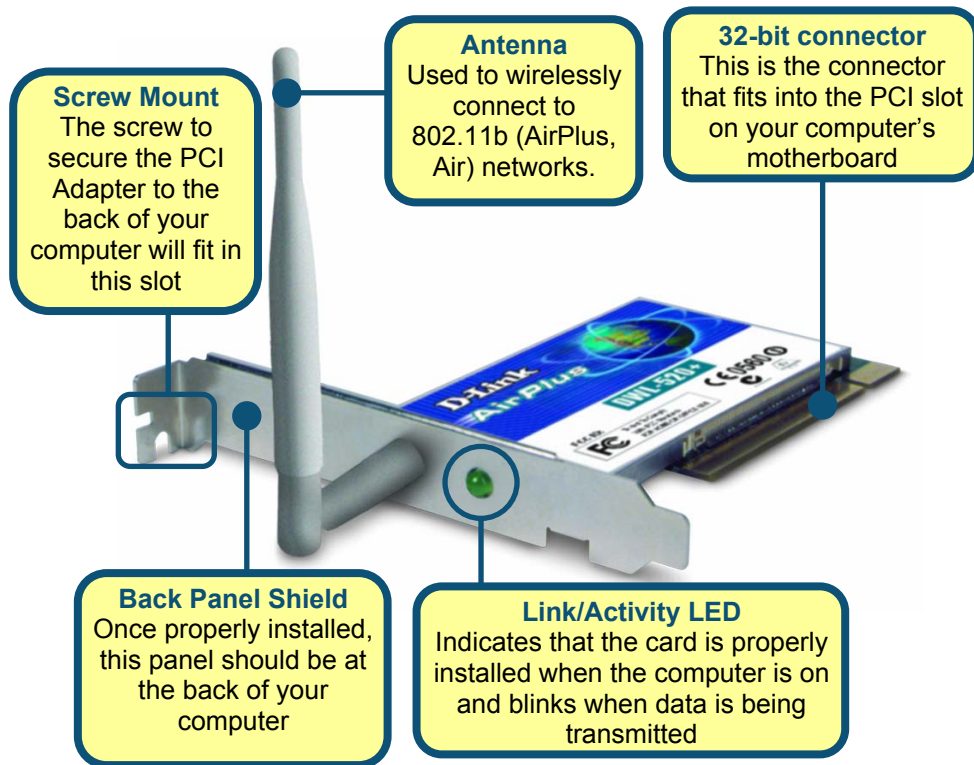
- A.** Make sure to turn off your computer and unplug the power cord. Remove the back cover of the computer.
- B.** Install the DWL-520+ carefully and firmly seat it into an available PCI slot (which is usually “white” or “cream” colored).



To avoid damage caused by static electricity, make sure to properly ground yourself by first touching a metal part of your computer to discharge any static electricity before working with the DWL-520+ Wireless PCI Adapter.

- C.** Secure the DWL-520+ back panel shield with a screw.
- D.** Replace the computer's cover.
- E.** Place the computer back in its normal position.
- F.** Attach the DWL-520+'s antenna to the socket on the back panel shield.

## 2 Installing the DWL-520+ Wireless PCI Adapter Into Your Computer

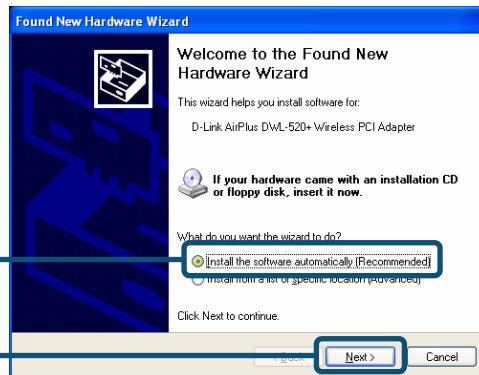


## 3 Plug In & Restart Your Computer

When you restart your computer this **Found New Hardware Wizard (Windows XP)** screen will appear:

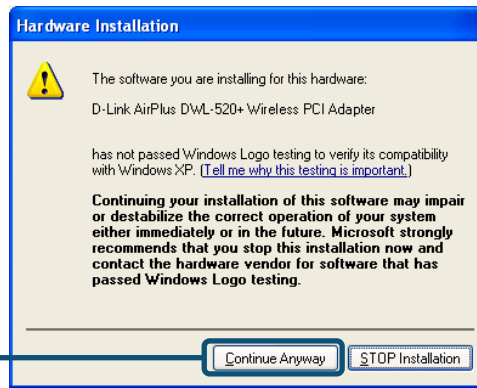
Select **Install the software automatically (Recommended)**

Click **Next**



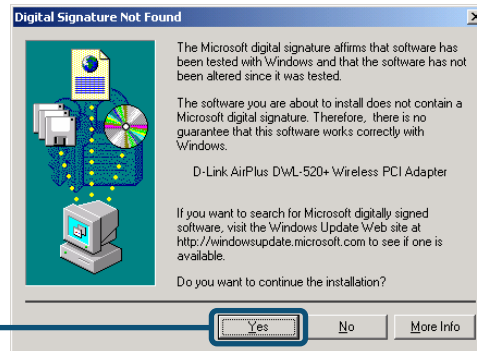
 **For Windows XP:** this **Hardware Installation** alert screen may appear after the desktop computer restarts.

Click **Continue Anyway** to finalize the installation



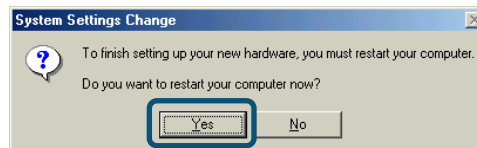
(The D-Link driver software for this device is undergoing Windows Logo testing. Microsoft certification is pending.)  
**For Windows 2000,** this **Digital Signature Not Found** screen may appear after your computer restarts.

Click **Yes** to finalize the installation



**For Windows Me and 98,** after your computer restarts, this **Systems Settings Change** screen may appear.

Select **Yes** to finalize the installation



# 4

## Your Installation is Complete!

After you've continued in Windows XP (or after the computer restarts in the other Windows operating systems), the D-Link AirPlus DWL-520+ **Configuration Utility** will automatically start and the utility icon will appear in the bottom right hand corner of the desktop screen (systray). **If this icon appears GREEN, then you have successfully installed the DWL-520+, are connected to a wireless network and are ready to communicate!**

Double-click the **utility icon** to use the configuration utility.



If the utility icon does not appear, double-click the **shortcut icon** that has appeared on your desktop.



D-Link AirPlus  
DWL-520+  
Utility

# APPENDIX

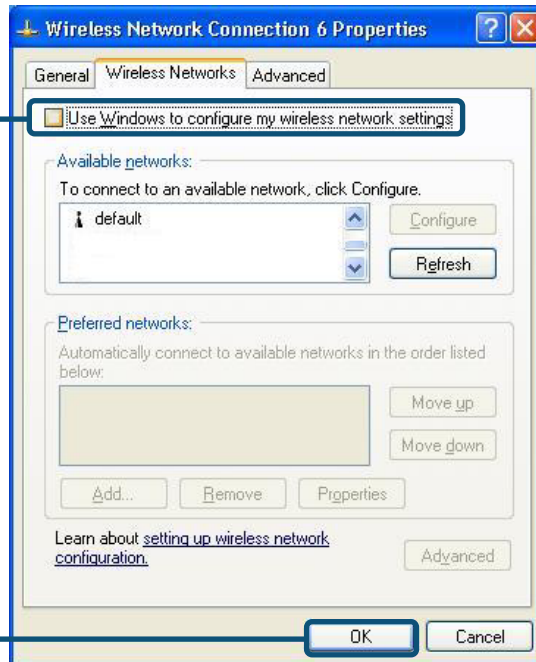
For Windows XP, if you wish to use the DWI-520+ utility, please do the following steps.

Click the XP Networking icon to use the Zero Configuration Wireless Settings.



Click **Advanced**

Uncheck "Use Windows to configure my wireless network settings."



Click **OK**

# APPENDIX

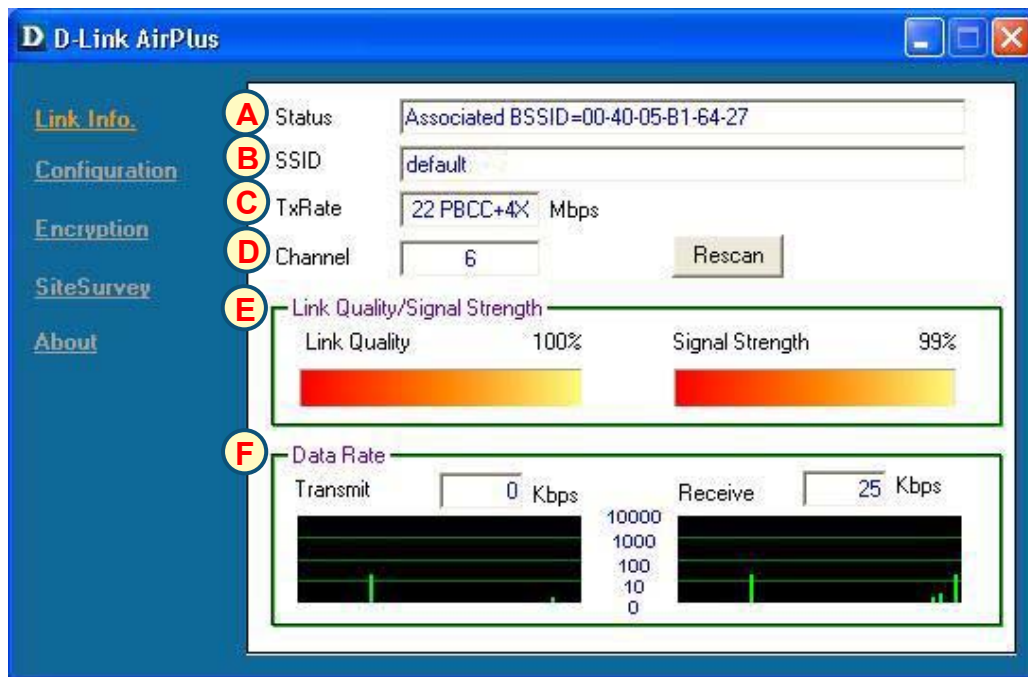
## Using the Configuration Utility

The **D-Link AirPlus Configuration Utility** window will appear. By default, it will take you to the **Link Info** section.

**A. Status:** Displays the MAC Address of the Access Point that is associated with the DWL-520+.

**B. SSID:** The Service Set Identifier is the name assigned to the wireless network. The factory SSID setting is set to **default**.

**C. TxRate:** The default setting is 11 Mbps; however, TxRate settings are automatically determined by the DWL-520+ depending on the distance from the access point.



**D. Channel:** Displays the channel information. By default, the channel is set to 6 and selection is automatically determined by the DWL-520+.

**E. Link Quality / Signal Strength:** Displays the Link Quality for the DWL-520+ wireless connection to the access point. The Signal Strength represents the wireless signal between the access point and the DWL-520+. The percentage coincides with the graphical bar.

**F. Data Rate:** Graphically displays the statistics of data transmitted and received.



Making changes to the DWL-520+'s factory settings. By clicking on the **Configuration menu**, changes can be made to the default wireless settings of the DWL-520+.


**G. SSID:** The Service Set Identifier is the name assigned to the wireless network. The factory SSID setting is set to **default**. Make changes here to match the SSID on existing Wireless Router or Access Point.

**H. Wireless Mode:** The factory setting is set to **Infrastructure**. Ad-Hoc mode is used for peer-to-peer networking.

**I. Channel:** By default, the channel is set to **6**. Channel selection is automatically determined by the DWL-520+ depending on the channel setting of the access point selected for association. To change the channel settings, the **Wireless Mode** must be set to **Ad-hoc**.

The screenshot shows the 'D-Link AirPlus' configuration window. On the left is a navigation menu with 'Link Info.', 'Configuration >>>', 'Encryption', 'SiteSurvey', and 'About'. The 'Configuration >>>' section is active, showing several settings: SSID (text field with 'default'), Wireless Mode (dropdown menu with 'Infrastructure'), Channel (dropdown menu with '6'), TxRate (dropdown menu with 'Auto'), Preamble (dropdown menu with 'Long Preamble'), and Power Mode (dropdown menu with 'Continuous Access Mode'). To the right of these settings is a '4x Config' section with two radio buttons: '4x Disable' and '4x Enable', with '4x Enable' selected. At the bottom are 'Apply' and 'Cancel' buttons. A yellow callout box on the right side of the window contains the text: 'By default the 4x feature is enabled. To disable the 4x feature click 4x Disable.'

**J. TxRate:** You can adjust the transmission rate to get the best signal possible depending on your usage and your environment.

 The **preamble setting** of the DWL-520+ must match the preamble setting of the Wireless Router or Access Point in order to communicate on the network.

**K. Preamble:** By default, D-Link AirPlus Products are set to **Long Preamble**. The Preamble defines the length of the CRC block (Cyclic Redundancy Check is a common technique for detecting data transmission errors) for communication between the Access Point and wireless network adapters. High network traffic areas should use the shorter preamble type.

**L. Power Mode:** By default, Power Mode is set to Continuous Access Mode. **Continuous Access Mode** — this default setting consumes the most power. **Maximum Power Save** — this setting consumes the least power. **Power Save** — this setting consumes a moderate amount of power.

# APPENDIX

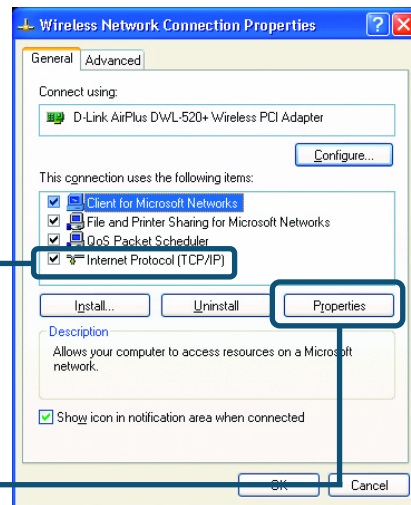
To connect to a network, **make sure the proper network settings are configured for DWL-520+.**

## For Microsoft Windows XP:

Go to **Start > right click on My Network Places > select Properties > Double-click on the Network Connection** associated with the DWL-520+.

Click **Internet Protocol (TCP/IP)**

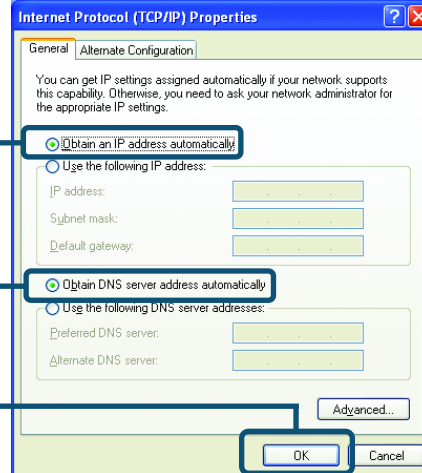
Click **Properties**



Select **Obtain an IP address automatically** (if the Wireless Router or Access Point has DHCP server enabled)

Select **Obtain DNS server address automatically**

Click **OK**



Setup for wireless router or Access Point using **Static IP address.**

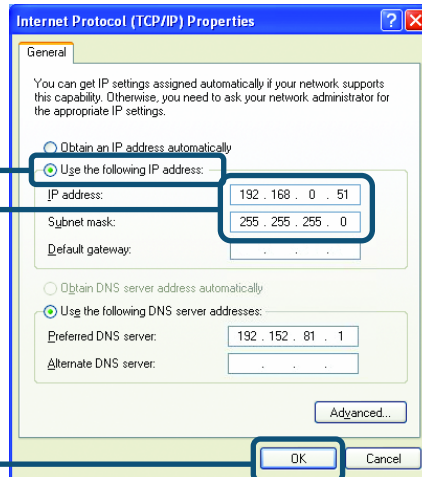
Select **Use the following IP address** (if the Wireless Router or Access Point does not have DHCP server enabled)

Input a static IP address on the same network, which will correspond with the Wireless Router or Access Point.

**IP address: 192.168.0.51**  
**Subnet mask: 255.255.255.0**

Your Internet service provider provides preferred DNS server information.

Click **OK**

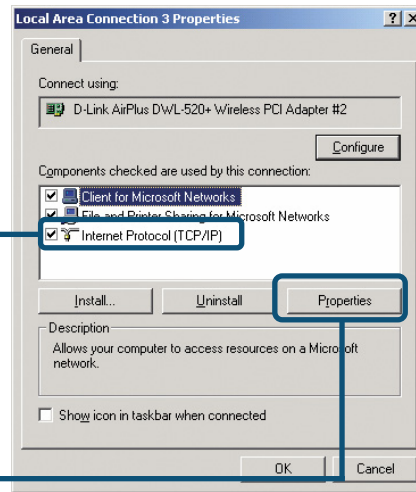


## For Windows 2000 users:

Go to **Start > Settings > Network and Dial-up Connections** > Double-click on the **Local Area Connection** associated with the DWL-520+ > select **Properties**

Click **Internet Protocol (TCP/IP)**

Click **Properties**

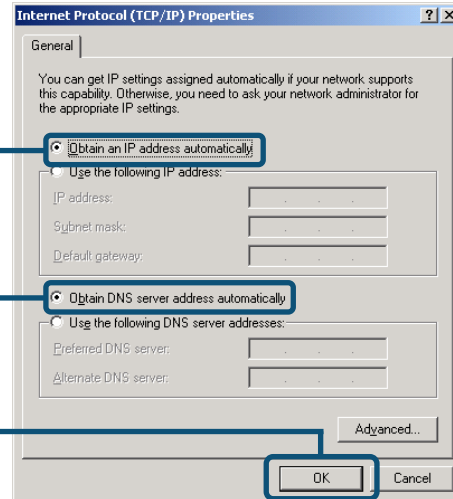


Setup for wireless router or Access Point using **DHCP server**.

Select **Obtain an IP address automatically** (if the Wireless Router or Access Point has DHCP server enabled)

Select **Obtain DNS server address automatically**

Click **OK**



Setup for wireless router or Access Point using **Static IP address**.

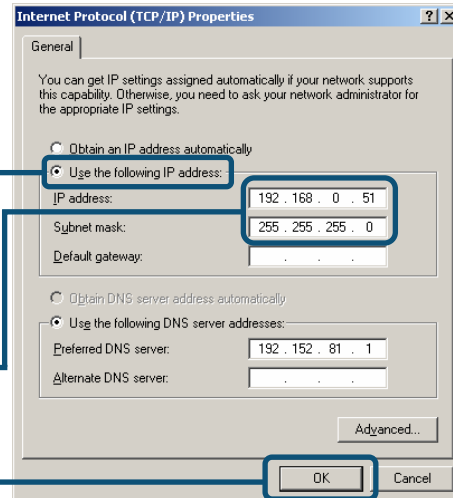
Select **Use the following IP address** (if the Wireless Router or Access Point does not have DHCP server enabled)

Input a static IP address on the same network, which will correspond with the Wireless Router or Access Point.

**IP address: 192.168.0.51**  
**Subnet mask: 255.255.255.0**

Your Internet service provider provides preferred DNS server information.

Click **OK**



## Technical Support

You can find software updates and user documentation on the D-Link website.

D-Link provides free technical support for customers within the United States and within Canada for the duration of the warranty period on this product.

U.S. and Canadian customers can contact D-Link technical support through our website, or by phone.

### Tech Support for customers within the United States:

***D-Link Technical Support over the Telephone:***

(877) 453-5465

24 hours a day, seven days a week.

***D-Link Technical Support over the Internet:***

<http://support.dlink.com>

[email:support@dlink.com](mailto:support@dlink.com)

### Tech Support for customers within Canada:

***D-Link Technical Support over the Telephone:***

(800) 361-5265

Monday to Friday 8:30am to 9:00pm EST

***D-Link Technical Support over the Internet:***

<http://support.dlink.ca>

[email:support@dlink.ca](mailto:support@dlink.ca)

**D-Link®**  
Building Networks for People