



Code: 501227

# FT-1000 Downdraft Table



Axminster Tool Centre,  
Unit 10 Weycroft Avenue, Axminster, Devon EX13 5PH

[www.axminster.co.uk](http://www.axminster.co.uk)

## **CONTENTS:**

IMPORTANT SAFETY RULES -----	<b>2</b>
IMPORTANT SAFETY RULES FOR DUST COLLECTORS -----	<b>3</b>
GROUNDING INSTRUCTIONS -----	<b>4</b>
SPECIFICATIONS -----	<b>5</b>
CONTENTS OF PACKAGE -----	<b>6</b>
CONTENTS OF PARTS BAG -----	<b>7</b>
ASSEMBLY INSTRUCTION -----	<b>8</b>
EXPLODED DIAGRAM -----	<b>9</b>
PARTS LIST -----	<b>10</b>

- **WARNING!**

Please read this manual carefully before assembly, testing and operating.

- **WARNING!**

Do not operate this unit until hose or pipe is installed onto the dust inlet port.

- **WARNING!**

This machine is for woodworking machinery use only, and prohibited from other purpose.

# IMPORTANT SAFETY RULES

Wood working can be dangerous if safe and proper operating procedures are not followed. As with all machinery, there are certain hazards involved with the operation of the product. Using the machine with respect and caution will considerably lessen the possibility of personal injury. However, if normal safety precautions are overlooked or ignored, personal injury to the operator may result.

Safety equipment such as guards, push sticks, hold-downs, feather boards, goggles, dust masks and hearing protection can reduce your potential for injury. But even the best guard won't make up for poor judgment, carelessness or inattention. Always use common sense and exercise caution in the workshop. If a procedure feels dangerous, don't try it. Figure out an alternative procedure that feels safer.

REMEMBER: Your personal safety is your responsibility.

## WARNING: FAILURE TO FOLLOW THESE RULES MAY RESULT IN SERIOUS PERSONAL INJURY

1. FOR YOUR OWN SAFETY, READ INSTRUCTION MANUAL BEFORE OPERATING THE TOOL. Learn the tool's application and limitations as well as the specific hazards peculiar to it.
2. KEEP GUARDS IN PLACE and in working order
3. ALWAYS WEAR EYE PROTECTION
4. GROUND ALL TOOLS. If tool is equipped with three-prong plug, it should be plugged into a three-hole electrical receptacle. If an adapter is used to accommodate a two-prong receptacle, the adapter plug must be attached to a known ground. Never remove the third prong.
5. REMOVE ADJUSTING KEYS AND WRENCHES. Form habit of checking to see that keys and adjusting wrenches are removed from tool before turning it "ON".
6. KEEP WORK AREA CLEAN. Cluttered areas and benches invite accidents.
7. DON'T USE IN DANGEROUS ENVIRONMENT. Don't use power tools in damp or wet locations, or expose them to rain. Keep work area well lighted.
8. KEEP CHILDREN AND VISITORS AWAY. All children and visitors should be kept a safe distance from work area.
9. MAKE WORKSHOP CHILDPROOF – with padlocks, master switches, or by removing starter keys.
10. DON'T FORCE TOOL. It will do the job better and be safer at the rate for which it was designed.
11. USE RIGHT TOOL. Don't force tool or attachment to do a job for which it was not designed.
12. WEAR PROPER APPAREL. No loose clothing, gloves, neck-ties, rings, bracelets, or other jewelry to get caught in moving parts. Non-slip footwear is recommended. Wear protective hair covering to contain long hair.
13. ALWAYS USE SAFETY GLASSES. Wear safety glasses. Everyday eyeglasses only have impact resistant lenses; they are not safety glasses. Also use face or dust mask if cutting operation is dusty.
14. SECURE WORK. Use clamps or a vise to hold work when practical. It's safer than using your hand and frees both hands to operate tool.
15. DON'T OVERREACH. Keep proper footing and balance at all times.
16. MAINTAIN TOOLS IN TOP CONDITION. Keep tools sharp and clean for best and safest performance. Follow instructions for lubricating and changing accessories.
17. DISCONNECT TOOLS before servicing and when changing accessories such as blades, bits, cutters, etc.
18. USE RECOMMENDED ACCESSORIES. The use of accessories and attachments not recommended by us may cause hazards or risk of injury to persons.
19. REDUCE THE RISK OF UNINTENTIONAL STARTING. Make sure switch is in "OFF" position before plugging in power cord.
20. NEVER STAND ON TOOL. Serious injury could occur if the tool is tipped or if the cutting tool is accidentally contacted.
21. CHECK DAMAGED PARTS. Before further use of the tool, a guard or other part that is damaged should be carefully checked to ensure that it will operate properly and perform its intended function – check for alignment of moving parts, binding of moving parts, breakage of parts, mounting, and any other conditions that may affect its operation. A guard or other part that is damaged should be properly repaired or replaced.
22. DIRECTION OF FEED. Feed work into a blade or cutter against the direction of rotation of the blade or cutter only.
23. NEVER LEAVE TOOL RUNNING UNATTENDED. TURN POWER OFF. Don't leave tool until it comes to a complete stop.
24. DRUGS, ALCOHOL, MEDICATION. Do not operate tool while under the influence of drugs, alcohol or any medication.
25. MAKES SURE TOOL IS DISCONNECTED FROM POWER SUPPLY while motor is being mounted, connected or reconnected.
26. WARNING: The dust generated by certain woods and wood products can be injurious to your health. Always operate machinery in well ventilated areas and provide for proper dust removal. Use wood dust collection systems whenever possible.

# IMPORTANT SAFETY RULES FOR DUST COLLECTORS

**WARNING:** Basic precautions should always be followed when using your dust collector. To reduce the risk of injury, electrical shock or fire, comply with the safety rules listed below:

1. READ and understand the instruction manual before operating the dust collector.
2. DO NOT leave the dust collector plugged into the electrical outlet. Unplug dust collector from outlet when not in use and before servicing, changing bags, unclogging and cleaning.
3. ALWAYS turn the power switch "OFF" before unplugging the dust collector.
4. WARNING: TO REDUCE THE RISK OF ELECTRICAL SHOCK do not use outdoors or on wet surfaces. Use for dry pickup only!
5. FOLLOW all electrical and safety codes, including the National Electric Code (NEC) and the Occupational Safety and Health Regulations (OSHA). All electrical connections and wiring should be made by qualified personnel only.
6. DO NOT use the dust collector to pick up flammable or combustible liquids, such as gasoline. NEVER use the dust collector near any flammable or combustible liquids.
7. USE the dust collector to pick up wood materials only. DO NOT use the dust collector to pick up metal shavings, dust, water, or parts.
8. NEVER use the dust collector to dissipate fumes or smoke. NEVER pick-up anything that is burning or smoking, such as cigarettes, matches or hot ashes.
9. USE only as described in this manual.
10. DO NOT pull the dust collector by the power cord. NEVER allow the power cord to come in contact with sharp edges, hot surfaces, oil or grease.
11. DO NOT unplug the dust collector by pulling on the power cord. ALWAYS grasp the plug, not the cord.
12. DO NOT handle the plug or dust collector with wet hands.
13. REPLACE a damaged cord immediately. DO NOT use a damaged cord or plug. If the dust collector is not operating properly, or has been damaged, left outdoors or has been in contact with water, return it to an Authorized Service Center for service.
14. DO NOT use the dust collector as a toy. DO NOT use near or around children.
15. DO NOT insert fingers or foreign objects into the dust intake ports. Keep hair, loose clothing, fingers, and all body parts away from openings and moving parts of the dust collector.
16. DO NOT use the dust collector without a filter bag and dust collection bag in place and properly secured.
17. DO NOT operate the dust collector with unused dust intake ports uncapped. ALWAYS cover exposed dust intake ports.
18. PERIODICALLY INSPECT dust and filter bags for any cuts, rips or tears. NEVER operate the dust collector with a damaged bag or vacuum hose.
19. The dust collector is designed for home use or light commercial duty ONLY!
20. CONNECT dust collector to a properly grounded outlet only. See Grounding Instructions.

**SAVE THESE INSTRUCTIONS**

# GROUNDING INSTRUCTIONS

The appliance must be grounded, if it should malfunction or breakdown, grounding provides a path of least resistance for electric current to reduce the risk of electric shock. This appliance is equipped with a cord having equipment-ground conductor and grounding plug. The plug must be inserted into an appropriate outlet that is properly installed and grounded in accordance with all local codes and ordinances.

**WARNING** – Improper connection of the equipment-grounding conductor can result in a risk of electric shock. Check with a qualified electrician or service person if you are in doubt as to whether the outlet is properly grounded. Do not modify the plug provided with the appliance – if it will not fit the outlet; have a proper outlet installed by a qualified electrician.

## **For grounded, cord-connected appliances:**

This appliance is for use on a circuit having a normal rating more than 120 volt and is factory-equipped with a specific electric cord and plug to permit connection to a proper electric circuit. Make sure that the appliance is connected to an outlet having the same configuration as the plug. No adaptor should be used with this appliance. If the appliance must be reconnected for use on a different type of electric circuit, qualified service personnel should make the reconnection.

## **For a permanently connected appliance:**

This appliance must be connected to a grounded metal, permanent wiring system; or an equipment-grounding conductor must be run with the circuit conductors and connected to the equipment grounding terminal or lead on the appliance.

## **SPECIFICATIONS:**

**Motor-----1/2 HP**

**AMP----- 6 A**

**Motor Speed----- 1650 RPM**

**Suction Capacity----- 1790 CFM**

**Impeller Size----- 9" x 7"**

**Switch----- On / Off Switch**

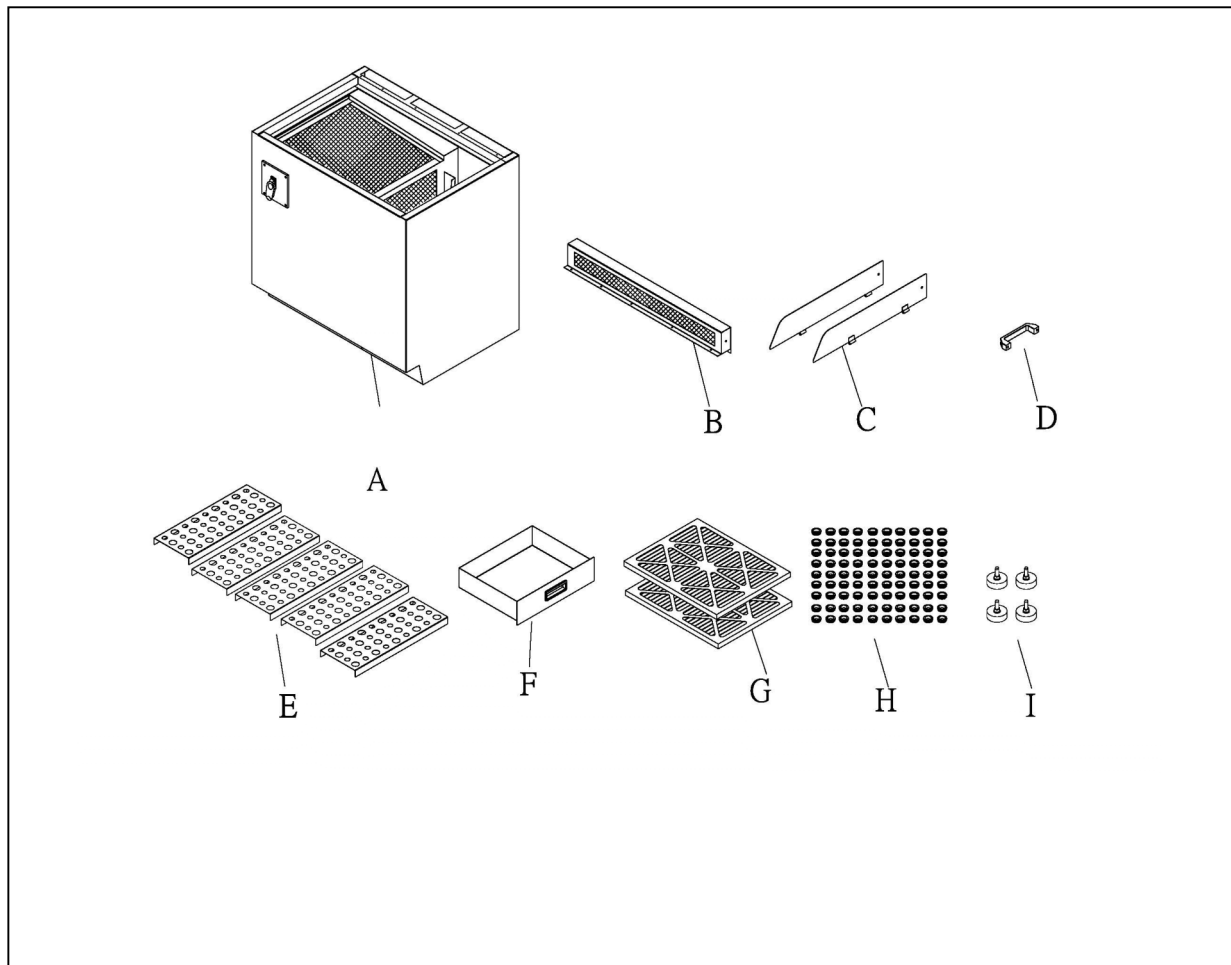
**Overall Dimensions of Unit----- 1050 x 600 x 850  
mm**

**N.W. ----- 70 KGS**

**G.W. ----- 81 KGS**

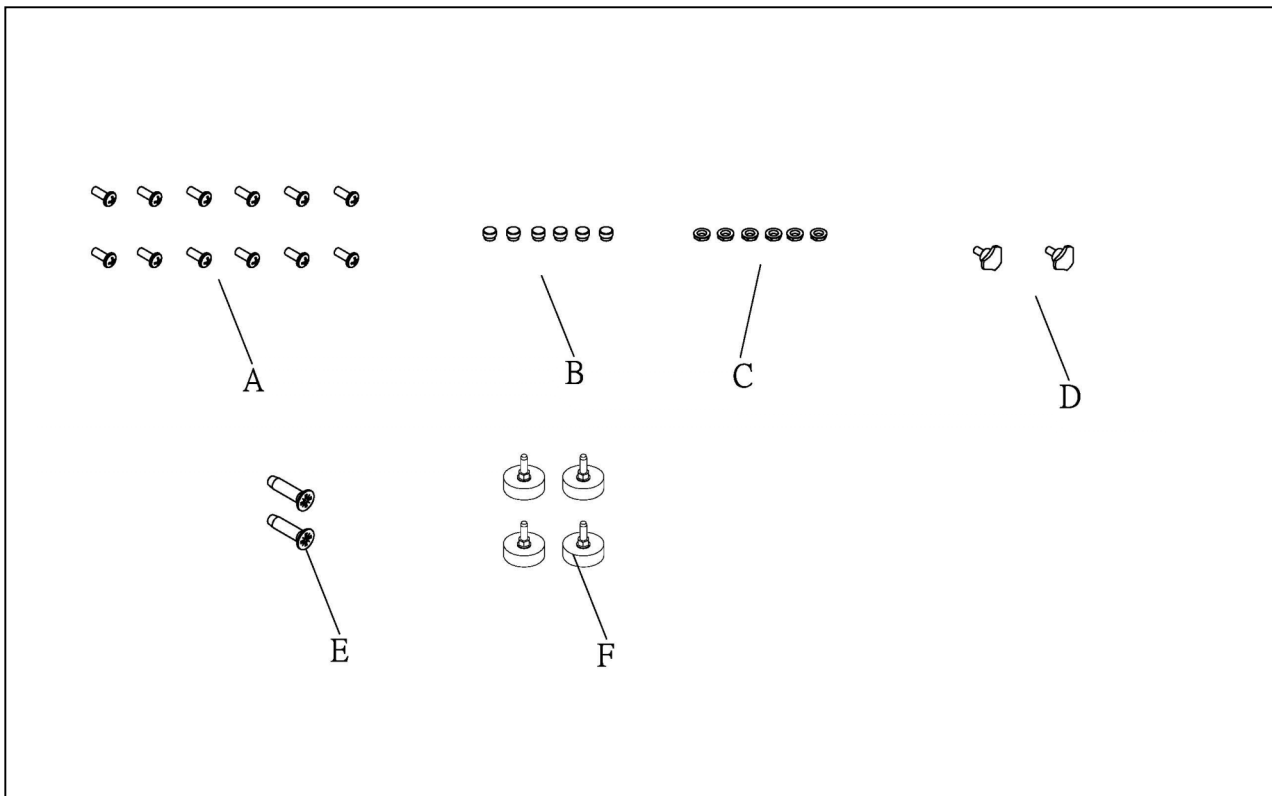
**CUFT ----- 21.7'**

# CONTENTS OF PACKAGE FT-1000:



<u>NO.</u>	<u>Description</u>	<u>Q'TY</u>	<u>Part List NO.</u>	<u>NO.</u>	<u>Description</u>	<u>Q'TY</u>	<u>Part List NO.</u>
A	Main Housing	1	NO.40	F	Drawer	1	NO.34
B	Sucking Head Set	1	NO.17	G	Filter Net	2	NO.11
C	Side Cover	2	NO.19.41	H	Rubber	90	NO.14
D	Handle	1	NO.9	I	Foot Pad	4	NO.35~39
E	Sucking Board	5	NO.12				

## CONTENTS OF PARTS BAG FT-1000:



<u>NO.</u>	<u>Description</u>	<u>Specification</u>	<u>Q'TY</u>	<u>Part List No.</u>
A	Phillips Head Screw	3/16"x3/8"	12	NO.16
B	Stopper		6	NO.13
C	Stopper Nut		6	NO.15
D	Triangular Knob	1/4"x1/2"	2	NO.18
E	Flat Head Screw	1/4"x5/8"	2	NO.8
F	Foot Pad		4	NO.35~39



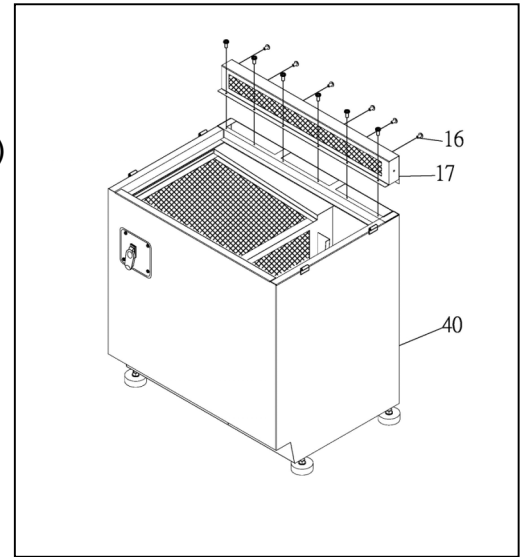
# **ASSEMBLY INSTRUCTION:**

## **STEP1-1:**

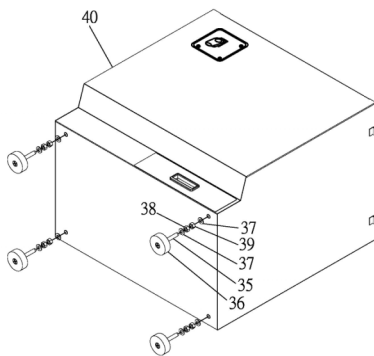
Place the Sucking Head Set (NO.17) on the Main Housing (NO.40) and tight with Phillips Head Screws. (NO.16)  
See (FIG.1)

## **STEP1-2:**

Place the Pad & Accessory (NO.35~NO.39) and fixing the Pad & Accessory (NO.35~NO.39) on the machine bottom as shown in FIG.1-2.



(FIG.1)



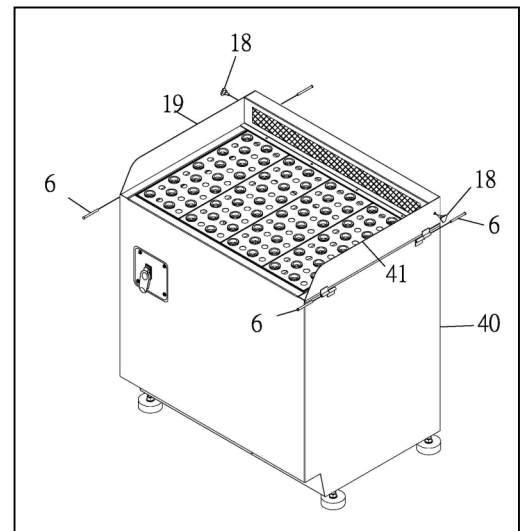
(FIG1-2)

## **STEP2-1:**

Assemble Left Side Cover (NO.19) and Right Side Cover (NO.41) on the Main Housing with Pins. (NO.6)  
See (FIG.2)

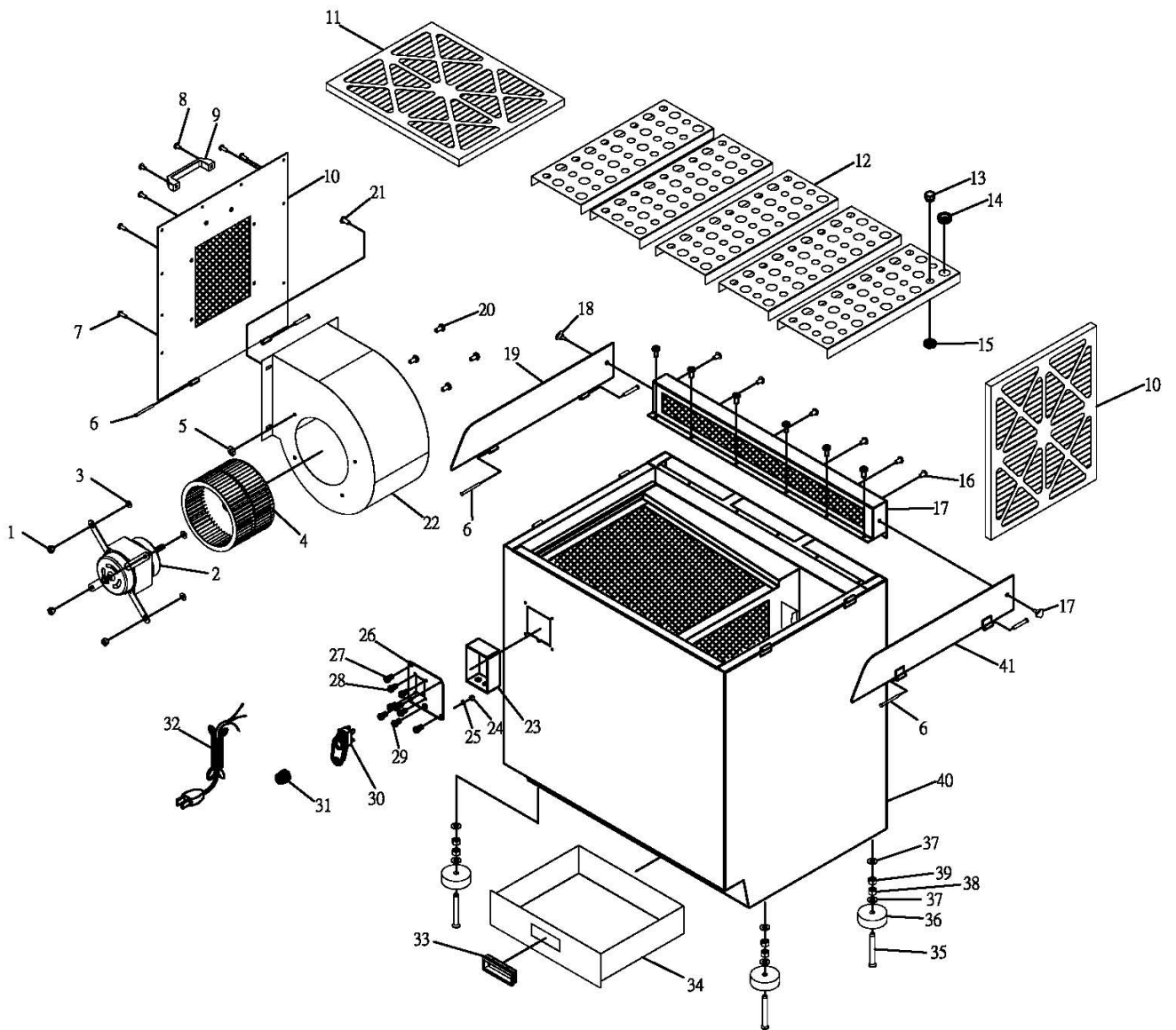
## **STEP2-2:**

Use Triangular Knob (NO.18) to tight the Left and Right Side Covers on the sucking head set.



(FIG.2)

# EXPLODED DIAGRAM FT-1000:



## **FT-1000 Part List:**

<b><u>NO.</u></b>	<b><u>Description</u></b>	<b><u>Specification</u></b>	<b><u>Q'TY</u></b>
1	Lock Nut	1/4"	4
2	Motor Set		1
3	Washer	1/4"x25	4
4	Impeller	9"x7"	1
5	Packing		4
6	Pin		6
7	Flange Bolts	1/4"x1/2"	10
8	Flat Head Screw	1/4"x5/8"	2
9	Handle		1
10	Outlet Cover		1
11	Filter Net		2
12	Sucking Board		5
13	Stopper		6
14	Rubber		90
15	Stopper Nut		6
16	Phillips Head Screw	3/16"x3/8"	12
17	Sucking Head Set		1
18	Triangular Knob	1/4"x1/2"	2
19	Left Side Cover		1
20	Hex Head Bolt		4
21	Flat Head Screw	5/16"x1/2"	4
22	Blower Housing		1
23	Switch Box		1
24	Nut	3/16"	1
25	Tooth Washer	3/16"	1
26	Switch Plate		1
27	Phillips Head Screw	3/16"x1/2"	4
28	Tapping Screw		4
29	Phillips Head Screw	3/16"x3/8"	1
30	On/Off Switch		1
31	Bushing	Mg-16	3
32	Power Cord		1
33	Pull Handle		1
34	Drawer		1
35	Cap Screw	1/2"x4"	4
36	Pad	ψ76x25	4
37	Washer	1/2"x25x2	8
38	Lock Nut	1/2"	4
39	Nut	1/2"	4
40	Main Housing		1
41	Right Side Cover		1



Please dispose of packaging for the product in a responsible manner. It is suitable for recycling. Help to protect the environment, take the packaging to the local recycling centre and place into the appropriate recycling bin.

**Only for EU countries**



Do not dispose of electric tools together with household waste material. In observance of European Directive 2002/96/EC on waste electrical and electronic equipment and its implementation in accordance with national law, electric tools that have reached the end of their life must be collected separately and returned to an environmentally compatible recycling facility.