

Cuisinart

baby™

INSTRUCTION
BOOKLET



Cuisinart® CleanWater®
Countertop Filtration System

WCH-1500BY

For your safety and continued enjoyment of this product, always read the instruction book carefully before using.

CONTENTS

Important Safeguards. 2

Special Cord Set Instructions 2

Parts and Features. 3

Unpacking & Placement. 3-4

Water Filter Setup 4

Water Dispenser Setup 4-5

Operating Instructions 5

Replacing Water Filter 5

Tips and Hints for You 5-6

Tips and Hints for Baby 6

Cleaning and Care 6

Troubleshooting 7

Storing the Unit 8

Technical Specifications 8

Performance Data Sheet 9

California Certification 10

For Purchases Made in Iowa 10

Warranty 11

IMPORTANT SAFEGUARDS

When using an electrical appliance, basic safety precautions should always be followed to reduce the risk of fire, electric shock, and personal injury, including the following:

1. Use this appliance only as described in this manual. Other uses not recommended may cause fire, electric shock or personal injury.
2. This product is intended for household use only.
3. To protect against electric shock, do not immerse unit, plug or cord in water or spray with liquids.
4. Close supervision is necessary when any appliance is used by or near children.
5. Unplug from the outlet when not in use or when moving from one location to another, and before cleaning.
6. To disconnect the appliance, grip the plug and pull it from the wall outlet. Never pull by the cord.
7. Do not operate the appliance in the presence of explosive and/or flammable fumes.
8. Do not place the appliance or any of its parts near an open flame, cooking or other heating appliance.

9. Do not operate the appliance with a damaged cord or plug, if the product malfunctions, or if it is dropped or damaged in any manner.
10. The use of attachments not recommended by the manufacturer may be hazardous.
11. Place the unit on a dry level surface.
12. Do not operate if the housing is removed or damaged.
13. A loose fit between the AC outlet (receptacle) and plug may cause overheating and a distortion of the plug. Contact a qualified electrician to replace loose or worn outlet.
14. This appliance is designed to be freestanding only, and should not be recessed or built in (fully recessed).
15. Locate the unit away from direct sunlight and sources of heat (stove, heater, radiator, etc.). Direct sunlight will affect/alter the outside color of the appliance.
16. Do not use with water that is microbiologically unsafe or of unknown quality without adequate disinfection before or after the system. Individuals requiring water of specific microbiological purity should consult their physician.

NOTE: The system and installation of this product need to comply with state and local laws and regulations.

WARNING: To reduce the risk of fire, electric shock or personal injury, unplug or disconnect the appliance from the power supply before servicing.

SAVE THESE INSTRUCTIONS FOR HOUSEHOLD USE ONLY

SPECIAL CORD SET INSTRUCTIONS

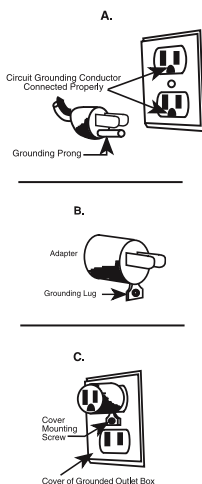
For your protection, this unit is equipped with a 3-conductor cord set that has a molded 3-prong grounding-type plug, and should be used in combination with a properly connected grounding-type outlet as shown in figure A. If a grounding-type outlet is not available, an adapter, shown in Figure B, may be obtained so that a 2-slot wall outlet can be used with a

3-prong plug. As shown in Figure C, the adapter must be grounded by attaching its grounding lug under the screw of the outlet cover plate.

NOTE: Do not remove the grounding prong.

CAUTION: Before using an adapter, it must be determined that the outlet cover plate screw is properly grounded. If in doubt, consult a licensed electrician. Never use an adapter unless you are sure it is properly grounded.

NOTE: Use of an adapter is not permitted in Canada.



PARTS AND FEATURES

- 1. 12-Week Filter Timer**
Lets you know when to change your water filter.
- 2. Cover**
Flip-top lid for easy filling.
- 3. Upper Water Tank**
Holds approx. ½ gallon of unfiltered water.
- 4. Lower Water Tank**
Holds approx. 1 gallon of filtered water.
- 5. On/Off Power Button**
Press to power On. This will activate the chilling and heating functions.
- 6. Hot Water Button with Child Lock**
Push safety lock up, then press to dispense hot water.
- 7. Room Water Button**
Press to dispense room temperature water.
- 8. Cold Water Button**
Press to dispense chilled water.
- 9. Indicator Lights**
Red/blue LEDs light up when water has reached hot/cold temperatures. Green LED lights up when unit is in Energy Saver mode (hot water is off).
- 10. Spigots**
- 11. Brushed Stainless Steel Base**
- 12. Internal Water Tanks (not shown)**
Hot and cold tanks – approx. ½ gallon total capacity.

13. Energy Saver Switch (not shown)

Turn off your heater when hot water is not needed to reduce the system's energy usage by more than 50%.

14. ENERGY STAR® rated

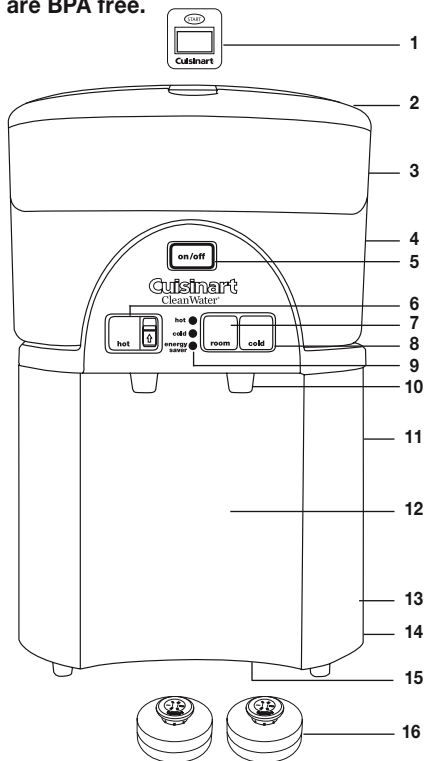
15. Drainage Plugs (not shown)

Two removable plastic plugs are located on bottom of unit.

16. Two Replacement Water Filters (Model GF-80)

Each Cuisinart® Water Filter has an optimum filter life of 3 months.

All parts that come in contact with water are BPA free.



UNPACKING & PLACEMENT

1. Remove your Cuisinart® CleanWater® Countertop Filtration System carefully from the box.
2. Position the unit on a stable flat surface, close to a main power outlet. Avoid direct sunlight and keep out of the reach of children.
3. Allow at least 3 inches of space around the sides and rear of the unit for proper air circulation.

4. Remove filter from upper tank and carefully follow the **SETUP** instructions below. You will need a large bowl, a pitcher (or another type of container), and a glass.

NOTE: Do not plug in unit until ALL steps of SETUP are complete.

WATER FILTER SETUP

NOTE: For optimum filtering and flow rates, the water filter must be prepared and installed exactly as follows:

Preparing the Water Filter

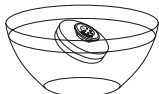
1. Remove the filter from its packaging.

NOTE: The filter may contain a small amount of loose carbon dust. It may also appear moist, have a faint smell of plastic or a slight yellowish tint – these are all normal. **DO NOT** wash filter with soap or water.

2. Place water filter in **empty bowl sideways** (see image). Pressing it firmly to the bottom of the bowl, and being careful not to pour water directly onto the filter, slowly add enough cold water to fully submerge and cover the filter by at least 1 inch. (You should see bubbles escaping the filter.)



3. Continue to hold filter under water for at least 30 seconds.
4. Release the filter and let it soak at least **15 minutes**. **NOTE:** While soaking, the filter should be partially submerged and may tilt to one side.

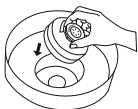


Installing the Prepared Water Filter

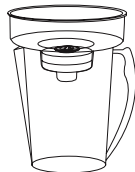
1. While the filter is soaking, remove the lid, upper water tank and lower water tank.
2. Remove the filter timer from the lid by flipping the lid over and pressing on the plastic tab.
3. Wash both tanks and plastic lid in mild, soapy water, and rinse. Replace the filter timer.
4. Lift the filter from the bowl and allow water to drain.

NOTE: The filter's loose carbon dust may slightly darken water while soaking.

5. With the Cuisinart logo facing up, insert the water filter into the upper water tank and push firmly into place.



6. Place the upper tank on a pitcher (or another type of container) and fill with **cold** tap water. Allow to drain for **5 minutes** to flush out any remaining carbon dust, then pour out remaining water.

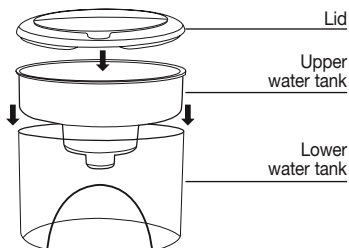


WATER DISPENSER SETUP

NOTE: Use only **cold** tap water to fill the unit.

Filling the Upper and Lower Tanks

1. Place the upper tank onto the lower tank and cover with the lid.
2. Place assembled tanks on base. **NOTE:** The vertical groove on the upper tank must face the back of the unit.

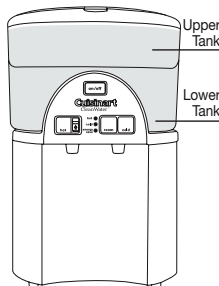


3. Carefully lift the flip-top lid and add **cold** water to the **FILL** line. **NOTE:** This is a gravity fill system. To increase the filtering flow rate, continue adding water to the **FILL** line of the upper tank until tanks are completely full.
4. During the initial setup, allow 30–40 minutes for water to filter into and completely fill upper and lower tanks.

Filling the Internal Tanks

NOTE: Upper and lower tanks must be completely full before proceeding.

1. Place a glass under the right spigot and press and continue to hold the **COLD** button until water flow becomes steady (may take up to 3 minutes).



2. Repeat process with **ROOM** button, and then with the **HOT** button until all flow steadily. **NOTE:** When filling hot and cold internal tanks, the water level in the lower tank will drop and you will hear the filling process taking place.

Setting the Filter Timer

The filter timer, located on the lid of the unit, lets you know when to change your water filter. Each filter will last for 3 months.

1. Once unit is set up and all water tanks are full, peel off the "Filtering" sticker from the filter timer screen.
2. Press and hold the Start button until FILTERING is displayed (approx. 5 seconds).
3. In 12 weeks, the word REPLACE will appear. For best results, we recommend inserting a new Cuisinart® Water Filter immediately.
4. You may turn off the timer and display by pressing the Start button for 5 seconds. Once you replace the filter, reset the timer by pressing the Start button for 3 seconds.

NOTE: You may reset the timer at any time by pressing and holding the Start button for 3 seconds.

OPERATING INSTRUCTIONS

Once setup is completed, tanks are filled and water is flowing steadily, your unit is ready to use!

1. Close the lid and plug unit into outlet.
2. Press the On/Off power switch on the control panel to turn on. The BLUE light around the power switch indicates the unit is on and cooling and heating functions are activated.
3. After about 15 minutes, the RED hot water indicator will light up, signaling hot water is ready to dispense.

NOTE: Energy Saver switch must be in the Off position for water to heat.

4. After about 1 hour and 20 minutes, the BLUE cold water indicator will light up, signaling water is chilled.

NOTE: On subsequent fill-ups, unit should take less than 10 minutes to heat and 30 minutes to chill.

5. Press and hold each button to ensure all air has been purged from the unit so water flow is steady.

Initiating Energy Saver Mode

You can turn off the heater used to heat the water in the hot tank to reduce the system's energy usage by more than 50%. While in Energy Saver mode, you can still dispense water from your hot tank; however, it will not be heated.

NOTE: We recommend you power your unit off when only room temperature filtered water is needed.

1. Put the Energy Saver switch in its On position.
2. The green LED will light up, indicating your unit is in Energy Saver mode.
3. Because your unit is in Energy Saver mode and your hot water heater is disabled, the red LED hot water indicator light will turn off when the temperature of the hot water decreases (this can take up to 2 hours).
4. To resume your hot water, simply put the Energy Saver switch in its Off position. After about 15 minutes, the red LED hot water indicator will light up, signaling hot water is ready to dispense.

NOTE: If your unit has been in Energy Saver mode for longer than a week, we recommend you flush out your hot water tank by dispensing and disposing of a full glass of water from the left spigot before enjoying your first glass of hot water.

REPLACING WATER FILTER

Replacement filters may be purchased at most retail outlets or www.cuisinart.com. To replace your filter, follow WATER FILTER SETUP on page 4.

TIPS AND HINTS FOR YOU

- Drinking 4 to 8 glasses of water each day is healthy! Your countertop chiller makes it easy.
- Regular use of cleaner, filtered water in your automatic coffeemaker means less frequent decalcification treatments.
- Use filtered water in your iron to reduce mineral build-up.
- Treat your pets to cleaner, filtered water.
- Cleaner, filtered water makes tea and instant soup or coffee taste better.
- Keeping the upper tank full helps increase the filtering process as well as the flow rate of water from spigots.
- Proper setup of the filter (as instructed on page 4) will maximize the reduction of contaminants and optimize taste of water.
- We recommend you drain and replace your filtered water if not used within a one-week period.
- You may notice some condensation and water droplets on the lid and tanks of your unit. This is normal due to the heating and cooling system.

TIPS AND HINTS FOR BABY

All of the filtered water benefits that are good for you are also good for your baby! Please see the Tips and Hints for Baby below, but remember that baby's doctor knows best.

- Drink plenty of water during pregnancy. Dehydration is a possible condition that leads to premature labor. Mother should have filtered water at hand to keep hydrated. It is also important for mother to stay hydrated while breastfeeding.
- CleanWater® filtered water does not remove fluoride from tap water, and fluoride is essential for the healthy development of baby's bones and teeth. So drink plenty of CleanWater® during pregnancy and while breastfeeding.
- Use filtered water when preparing formula and cereals for baby. We recommend you boil the filtered water first before preparing the formula or cereal in the usual, recommended manner.
- Use filtered water to steam foods for preparing baby food and purées.
- Baby can begin drinking filtered water in small amounts at about 6 months of age. But be careful – a baby that drinks water too early or in very large amounts can develop a serious condition called water intoxication.

CLEANING AND CARE

CAUTION: To prevent personal injury or electric shock, always unplug your Cuisinart® CleanWater® Countertop Filtration System from outlet before draining and cleaning. NEVER immerse base in water or other liquids.

STANDARD CLEANING:

1. Turn the unit off and unplug it from outlet.
2. Remove the filter and place it in a bowl.
3. Lift upper water tank, let it drain into lower tank, and set it aside. Then lift lower tank off base and empty. Careful, a full tank can be very heavy!
4. Clean the water tanks and the cover with warm soapy water. **NOTE:** Remove filter timer before washing lid. Filter timer is not immersible.
5. The base is not immersible. Simply wipe it clean with a damp cloth.
6. Dry thoroughly when clean.

SEMI-ANNUAL CLEANING:

We recommend you clean your unit twice a year to boost its operation and performance and to

remove any calcium scale residue from the heating and cooling elements.

This cleaning process takes about 45 minutes. If you are going to replace or recondition the filter, we suggest you set it up while cleaning the unit to save time (see #3 below).

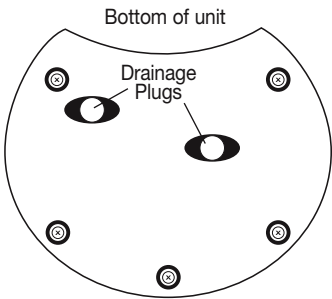
1. Turn the unit off and unplug it from outlet.
2. Remove and empty upper tank.
3. Remove the filter and place it in a bowl.
NOTE: To install a new filter or recondition the existing one, follow WATER FILTER SETUP instructions on page 4.
4. Remove and empty lower tank.
5. In the lower tank mix ½ gallon of distilled (white) vinegar and ½ gallon of tap water.
6. Place lower tank back on base.
7. Draw the following amount of water from each spigot: 2½ cups of hot, 1¼ cups of room temp, ¾ cups of cold. This allows the inner tanks to fill with cleaning solution.
8. Plug in and turn power on for 20 minutes – do not dispense water during this time.
9. Turn power off and draw the following amount of water from each spigot: 2½ cups of hot, 1¼ cups of room temp, ¾ cups of cold. This will help clear out scale and residue.
10. Remove the lower tank and discard the remaining solution. Place lower tank back on base.
11. Allow hot water to cool, then drain the internal reservoir over a sink by tilting unit slightly and removing the 2 plastic drainage plugs from bottom of unit. Plugs are tightly inserted and must be gently, but firmly, worked to remove.
12. When water has completely drained, replace plugs and lower tank.
13. Re-fill lower tank with water only and drain the internal reservoir again to flush thoroughly (see #11 above).
14. When water has completely drained, replace plugs, tanks, filter and cover.
15. Follow the WATER DISPENSER SETUP instructions on page 4, and the STANDARD CLEANING instructions on page 6.
16. To ensure the cleaning solution is thoroughly removed and only clean water flows, draw the following amount of water from the spigots once more: 2½ cups of hot, 1¼ cups of room temp, ¾ cups of cold. **NOTE:** If water has a vinegar taste or smell, continue to draw water until taste or smell is gone.

TROUBLESHOOTING

Symptom	Possible Cause	Solution
On/Off Power button does not light up.	Unit might not be plugged into outlet.	Check the wall outlet for power. Make sure the outlet is not controlled by a wall switch.
It takes longer than 45 minutes for the water to pass through the filter.	Some air is still in the filter.	Place filter in an empty bowl, then fill with water, making sure it is fully submerged. Resoak it for 10–15 minutes, or until no more bubbles are observed.
Unit does not dispense water when buttons are pushed.	Internal water tanks are not completely filled with water.	Review FILLING THE INTERNAL TANKS on page 4 to be sure it was done correctly. Make sure the lower water tank is full. Continue to press and hold push buttons until water flow is steady. If unit still won't dispense water or flow does not become steady, contact Customer Service.
Water continues flowing from spigot after push button is released.	Push button is stuck.	Remove water tanks from the base. Continue pressing button until it no longer sticks.
HOT water LED does not light up.	1. Power is not on. 2. There is no water in tanks.	1. Make sure unit is plugged into outlet. 2. Make sure air has been purged from internal tanks, as stated on page 4. 3. If there is water in the tanks, it will take about 10 minutes for the water to heat.
COLD water LED does not light up.	1. Power is not on. 2. There is no water in tanks.	1. Make sure unit is plugged into outlet. 2. Make sure air has been purged from internal tanks, as stated on page 4. 3. If there is water in the tanks, it will take about 80 minutes for the water to chill the first time. It takes only about 30 minutes for subsequent fill-ups.
COLD water LED light turns off even though cold water is not dispensed.	Large amount of room temperature water was dispensed.	Allow up to 30 minutes for water to chill and LED light will turn on.
Energy Saver mode LED does not light up.	1. Power is not on. 2. Energy Saver is in Off position	1. Make sure unit is plugged into outlet. 2. Make sure Energy Saver switch is in its On position.
Heater is still working and hot water is still available in Energy Saver mode.		Contact Customer Service.
Filter timer does not show FILTERING or REPLACE.	Battery is dead.	Contact Customer Service for replacement filter timer.
Leakage on the countertop.	1. Water tanks are not properly seated on base. 2. Drainage plugs are not fully engaged.	1. Make sure water tanks are seated properly on the base. 2. Ensure that drainage plugs are correctly installed on the bottom of the base.
Water leaks from the top cover.	Water tanks are overfilled.	Drain excess water from tanks by pressing push buttons.
ROOM temperature water is warm.		Allow up to 30 minutes for cold water to chill and blue LED light to turn on.
HOT temperature water is not hot.	Energy Saver is in On position.	Make sure Energy Saver is in its Off position.

STORING THE UNIT

1. Turn the unit off and unplug it from outlet.
2. Remove empty water tanks, filter and cover.
3. Allow hot water to cool, then bring base to sink.
4. Drain internal reservoir by tilting unit slightly and removing the 2 plastic drainage plugs from bottom of unit. Plugs are tightly inserted and must be gently, but firmly, worked to remove.
5. When water has completely drained, replace plugs, tanks, filter and cover.
6. Your Cuisinart® CleanWater® Countertop Filtration System is ready to store.



TECHNICAL SPECIFICATIONS

Unit: WCH-1500	1 Cuisinart® CleanWater® Countertop Filtration System 1 Cuisinart® Water Filter
System Capacity	up to 3 months/ 48 gallons/ 181 liters
Maximum Input Temperature	104°F (40°C)
Minimum Input Temperature	34°F (1°C)
Maximum Output Temperature	194°F (90°C)
Minimum Output Temperature	44°F (7°C)
Rated Service Flow	6 gallons / 22.7 liters per day (may vary according to water conditions)
Electrical Requirements	AC~120V 60Hz 3.7A 450W



System Tested and Certified by WQA against NSF/ANSI Standard 53 for the reduction of Lead, Benzene, Cadmium, Copper, Mercury, Tetrachloroethylene, Toluene, and Standard 42 for the reduction of Chlorine Taste and Odor.

See Performance Data Sheet for specific test conditions and results.

Claims are calculated based on WQA accepted practice of average percent reduction. The contaminants or other substances removed or reduced by this water treatment device are not necessarily in all users' water. Do not use with water that is microbiologically unsafe or of unknown quality without adequate disinfection before or after the system. Individuals requiring water of specific microbiological purity should consult their physician.

The Cuisinart® CleanWater® Countertop Filtration System processes approximately 48 gallons/ 181 liters. When the Cuisinart® Water Filter (GF-80) exceeds filtering capacity, replacement is essential for the product to perform as represented. In the United States, replacement filters cost generally \$19.99 per filter. Replacement filters may be purchased at most retail outlets. The performance of the filter may vary based on local water conditions.

Hot water should not be used with the Cuisinart® Water Filter (GF-80) as it will affect the filter's performance.

Refer to the Operating Instructions and Cleaning and Care for general unit operation and maintenance requirements. Testing was performed under standard laboratory conditions; actual performance may vary.

PERFORMANCE DATA SHEET

PERFORMANCE DATA SHEET FOR MODELS WCH-1000, WCH-1500 AND WCH-1500BY

CONTAMINANT REMOVAL DATA IMPORTANT NOTICE:

Read this Performance Data Sheet and compare the capabilities of this unit with your actual water treatment needs. It is recommended that before purchasing a water treatment unit, you have your water supply tested to determine your actual water treatment needs.

Performance testing conducted by WQA. These systems have been tested according to NSF/ANSI Standard 53 and 42 for reduction of the substances listed below. The concentration of the indicated substances in water entering the system was reduced to a concentration less than or equal to the permissible limit for the water leaving the system, as specified in NSF/ANSI Standard 53 and Standard 42.

Testing was performed under standard laboratory conditions; actual performance may vary.

			Removal	Removal	Action Level	Hardness	Temp	Inlet	
Substance	Influent Water Avg. (mg/L)	Influent Challenge Concentration (mg/L)	Filter Effluent Max. (mg/L)	Percent Reduction (%)	Max. Permissible Product Water Concentration (mg/L)	CaCO3 (mg/L)	Testing Compar. (°C)	PH	Reduction Requirement
NSF/ANSI Standard 42-Aesthetic Effects									
Chlorine Taste and Odor Reduction	2.0	2.0+/-10%	N/A	97.5%	N.A.	N.A.	20	7.53	≥50
NSF/ANSI Standard 53-Health Effects									
Copper pH 6.5	3.15	3.0+/-10%	.87	85.0%	1.3	16	20	6.42	N/A
Copper pH 8.5	3.10	3.0+/-10%	1.0	85.4%	1.3	120	19	8.42	N/A
Mercury pH 6.5	.006	0.006+/-10%	.0009	92.8%	0.002	22	19	6.45	N/A
Mercury pH 8.5	.006	0.006+/-10%	.001	89.9%	0.002	140	20	8.55	N/A
Cadmium pH 6.5	.029	0.03+/-10%	.002	96.6%	0.005	18	20	6.59	N/A
Cadmium pH 8.5	.03	0.03+/-10%	.004	92.5%	0.005	120	20	8.44	N/A
Benzene	.015	0.015+/-10%	.003	84.1%	0.005	130	20	7.58	N/A
Toluene	2.9	3.0+/-10%	.770	89.8%	1	320	20	7.54	N/A
Tetrachloroethylene	.014	0.015+/-10%	.003	92.5%	0.005	340	21	7.56	N/A
Lead pH 8.5	.149	.15+/-10%	.007	95.4%	.010	98	21	8.5	N/A
Lead pH 6.5	.154	.15+/-10%	.004	98.7%	.010	18	19	6.5	N/A

State of California
Department of Public Health
Water Treatment Device
Certificate Number

07 - 1887

Date Issued: September 10, 2007

Trademark/Model Designation

WCH-1500

Replacement Elements

GF-80

Manufacturer: Conair Corporation (Cuisinart Division)

The water treatment device(s) listed on this certificate have met the testing requirements pursuant to Section 116830 of the Health and Safety Code for the following health related contaminants:

Microbiological Contaminants and Turbidity

None

Organic Contaminants

Benzene
Tetrachloroethylene
Toluene

Inorganic/Radiological Contaminants

Cadmium
Copper
Mercury
Lead

Rated Service Capacity: 48 gal

Rated Service Flow: n/a

Conditions of Certification:

Do not use with water that is microbiologically unsafe or of unknown quality, without adequate disinfection before or after the system.

PURCHASES MADE IN IOWA



For purchases made in Iowa:

This form must be signed and dated by the buyer and seller prior to consummation of this sale.
This form should be retained on file by the seller for a minimum of two years.

BUYER:

SELLER:

Name

Name

Address

Address

City State Zip

City State Zip

Signature Date

Signature Date

WARRANTY

Limited Three-Year Warranty

This warranty is available to consumers only. You are a consumer if you own a Cuisinart® CleanWater® Countertop Filtration System that was purchased at retail for personal, family or household use. Except as otherwise required under applicable law, this warranty is not available to retailers or other commercial purchasers or owners. We warrant that your Cuisinart® CleanWater® Countertop Filtration System will be free of defects in materials and workmanship under normal home use for 3 years from the date of original purchase.

We recommend that you visit our website, **www.cuisinart.com** for a fast, efficient way to complete your product registration. However, product registration does not eliminate the need for the consumer to maintain the original proof of purchase in order to obtain the warranty benefits. In the event that you do not have proof of purchase date, the purchase date for purposes of this warranty will be the date of manufacture.

CALIFORNIA RESIDENTS ONLY

California law provides that for In-Warranty Service, California residents have the option of returning a nonconforming product (A) to the store where it was purchased or (B) to another retail store that sells Cuisinart products of the same type. The retail store shall then, according to its preference, either repair the product, refer the consumer to an independent repair facility, replace the product, or refund the purchase price less the amount directly attributable to the consumer's prior usage of the product. If neither of the above two options results in the appropriate relief to the consumer, the consumer may then take the product to an independent repair facility, if service or repair can be economically accomplished. Cuisinart and not the consumer will be responsible for the reasonable cost of such service, repair, replacement, or refund of nonconforming products under warranty. California residents may also, according to their preference, return nonconforming products directly to Cuisinart for repair or, if necessary, replacement by calling our Consumer Service Center toll-free at 1-800-726-0190. Cuisinart will be responsible for the cost of the repair, replacement, and shipping and handling of such nonconforming products under warranty.

BEFORE RETURNING YOUR CUISINART PRODUCT

If your Cuisinart® CleanWater® Countertop Filtration System should prove to be defective within the warranty period, we will repair or, if we think necessary, replace it. To obtain warranty service, please call our Customer Service Center toll-free at 1-800-726-0190 or write to: Cuisinart, 7811 North Glen Harbor Blvd, Glendale, AZ 85307. To facilitate the speed and accuracy of your return, enclose \$10.00 for shipping and handling. (California residents need only supply a proof of purchase and should call 1-800-726-0190 for shipping instructions.) Please be sure to include your return address, description of the product's defect, product serial number, and any other information pertinent to the return. Please pay by check or money order. **NOTE:** For added protection and secure handling of any Cuisinart product that is being returned, we recommend you use a traceable, insured delivery service. Cuisinart cannot be held responsible for in-transit damage or for packages that are not delivered to us. Lost and/or damaged products are not covered under warranty.

Your Cuisinart® CleanWater® Countertop Filtration System has been manufactured to the strictest specifications and has been designed for use only with authorized accessories and replacement parts. This warranty expressly excludes any defects or damages caused by accessories, replacement parts or repair service other than those authorized by Cuisinart. This warranty does not cover any damage caused by accident, misuse, shipment or other than ordinary household use. This warranty excludes all incidental or consequential damages. Some states do not allow the exclusion or limitation of these damages, so these exclusions may not apply to you. You may also have other rights, which vary from state to state.

Important: If the nonconforming product is to be serviced by someone other than Cuisinart's Authorized Service Center, please remind the servicer to call our Consumer Service Center at 1-800-726-0190 to ensure that the problem is properly diagnosed, the product is serviced with the correct parts, and to ensure that the product is still under warranty.

Cuisinart®

SAVOR THE GOOD LIFE®



Mini
Processors



Blenders



Juicers



Food
Processors



WaffleMakers

Discover the complete line of Cuisinart® brand premier kitchen appliances including food processors, mini food processors, hand mixers, blenders, toasters, coffeemakers, cookware, ice cream makers and toaster ovens at

www.cuisinart.com
www.cuisinart.com/baby

©2010 Cuisinart
150 Milford Road
East Windsor, NJ 08520
Printed in China

Any trademarks or service marks of third parties referred to herein are the trademarks or service marks of their respective owners.

10CE114850

IB-10135