

# **Service Manual**

## **ViewSonic VG510b/s**

**Model No. VLCDS27955-1W/-2W**

**15" Color TFT LCD Display**

(VG510b/s\_SM\_722 Rev. 1a Apr. 2004)

---

ViewSonic® 381 Brea Canyon Road, Walnut, California 91789 USA - (800) 888-8583

**Copyright**

Copyright © 2004 by ViewSonic Corporation. All rights reserved. No part of this publication may be reproduced, transmitted, transcribed, stored in a retrieval system, or translated into any language or computer language, in any form or by any means, electronic, mechanical, magnetic, optical, chemical, manual or otherwise, without the prior written permission of ViewSonic Corporation.

**Disclaimer**

ViewSonic makes no representations or warranties, either expressed or implied, with respect to the contents hereof and specifically disclaims any warranty of merchantability or fitness for any particular purpose. Further, ViewSonic reserves the right to revise this publication and to make changes from time to time in the contents hereof without obligation of ViewSonic to notify any person of such revision or changes.

**Trademarks**

Optquest is a registered trademark of ViewSonic Corporation.  
ViewSonic is a registered trademark of ViewSonic Corporation.  
All other trademarks used within this document are the property of their respective owners.

## Revision History

Revision	Date	Description Of Changes	Approval
1a	04/14/04	Initial Release DCN-3611	Angela Lu

## TABLE OF CONTENTS

<b>1. Precautions and Safety Notices</b>	<b>1</b>
<b>2. Specification</b>	<b>2</b>
<b>3. Front Panel Function Control Description</b>	<b>5</b>
<b>4. Circuit Description</b>	<b>7</b>
<b>5. Adjusting Procedure</b>	<b>8</b>
<b>6. Trouble Shooting Flow Chart</b>	<b>9</b>
<b>7. Recommended Spare Parts List</b>	<b>14</b>
<b>8. Exploded Diagram And Spare Parts List</b>	<b>22</b>
<b>9. Block Diagram</b>	<b>24</b>
<b>10. Schematic Diagrams</b>	<b>25</b>
<b>11. PCB Layout Diagrams</b>	<b>33</b>

## 1. Precautions and Safety Notices

Prior to using this manual, please ensure that you have carefully followed all the procedures outlined in the user manual for this product.

Read all of these instructions.

Save these instructions for later use.

Follow all warnings and instructions marked on the product.

Do not use this product near water.

This display should be installed on a solid horizontal base.

When cleaning, use only a neutral detergent cleaner with a soft damp cloth. Do not spray with liquid or aerosol cleaners.

Do not expose this display to direct sunlight or heat. Hot air may cause damage to the cabinet and other parts.

Adequate ventilation must be maintained to ensure reliable and continued operation and to protect the display from overheating. Do not block ventilation slots and openings with objects or install the display in a place where ventilation may be hindered.

Do not install this display near a motor or transformer where strong magnetism is generated. Images on the display will become distorted and the color irregular.

Do not allow metal pieces or objects of any kind fall into the display from ventilation holes.

Slots and openings in the cabinet and the back or bottom are provided for ventilation, to ensure reliable operation of the product and to protect it from overheating, those openings must not be blocked or covered. The openings should never be blocked by placing the product on a bed, sofa, rug, or other similar surface. This product should never be placed near or over a radiator or heat register. This product should not be placed in a built-in installation unless proper ventilation is provided.

## 2. Specification

### 2.1. PRODUCT SPECIFICATIONS

<i>LCD panel type</i>	15.0" TFT (15.0" Diagonal)
<i>Displayable resolution</i>	XGA 1024 x 768 maximum
<i>Pixel dimension</i>	0.297 mm horizontal x 0.297 mm vertical
<i>LCD display color</i>	16.8M Colors Max.
<i>OSD control</i>	AUTO CONFIG, BRIGHTNESS, CONTRAST, COLOR (R, G, B, BLACK LEVEL ADJUST), POSITION(H-POSITION, V-POSITION ),IMAGE (PHASE, CLOCK ), SETUP MENU (RESET,OSD POSITION, SYSTEM INFO )
<i>Manual control buttons</i>	MENU, Select, Adjust(up,down), Power.Mute,+,-
<i>Viewing angle</i>	Horizontal: $\pm 60$ , Vertical: -45~+55.
<i>Tilt</i>	+20°, -5°.
<i>Contrast ratio</i>	350:1 (typ) , 250:1 (min)
<i>Brightness</i>	250 <sup>cd</sup> /m <sup>2</sup> (typ), 200 <sup>cd</sup> /m <sup>2</sup> (min)
<i>Response time</i>	25ms (typ) tr+tf , 60ms (max) tr+tf
<i>Active display area</i>	304.1 mm (H) x228.1mm (V)
<i>AC/DC adapter</i>	Input: AC 100 ~ 240V, 50 ~ 60 Hz Output: +12 V DC.
<i>Input signal</i>	Video: Analog 0.7 Vp-p. 75 ohms Sync. : TTL Level, Positive/ Negative, Separate Sync.
<i>Input connector</i>	15 Pin D-Sub.
<i>Power management</i>	yes
<i>Dimensions ( WxHxD )</i>	34.6 cm x 35.5 cm x 15.6 cm.
<i>Weight</i>	2.7 kgs. (LCD Module only) 3.4kgs. (unit)
<i>Accessory</i>	VGA cable, AC/DC adapter, power cord.
<i>Temperature</i>	Operation : 0 ~ 50 °C Storage : -20 ~ 60 °C
<i>Color temp (white)</i>	White x 0.313 $\pm$ 0.03 , white y 0.329 $\pm$ 0.03

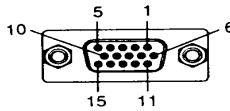
## 2.2. FACTORY SUPPORTING MODES

Primary Preset VESA 1024 x 768 @ 60 Hz  
 Factory Preset Modes

1. 640 x 350 @ 70Hz, 31.5kHz
2. 640 x 480 @ 60Hz, 31.5kHz
3. 640 x 480 @ 67Hz, 35.0kHz
4. 640 x 480 @ 75Hz, 37.5kHz
5. 640 x 480 @ 72Hz, 37.9kHz
6. 720 x 400 @ 70Hz, 31.5kHz
7. 800 x 600 @ 56Hz, 35.1kHz
8. 800 x 600 @ 60Hz, 37.9kHz
9. 800 x 600 @ 75Hz, 46.9kHz
10. 800 x 600 @ 72Hz, 48.1kHz
11. 800 x 600 @ 85Hz, 53.7kHz
12. 832 x 624 @ 75Hz, 49.7kHz
13. 1024 x 768 @ 60Hz, 48.4kHz
14. 1024 x 768 @ 70Hz, 56.5kHz
15. 1024 x 768 @ 72Hz, 58.1kHz
16. 1024 x 768 @ 75Hz, 60.0kHz

## 2.3. D-SUB CONNECTOR

This section describes the pin assignment of the LCD's video connector. It is called 15 Pin Mini D-sub Connector.



Pin NO.	Signal Connector
1	Red Video Signal
2	Green Video Signal
3	Blue Video Signal
4	N.C.
5	Ground
6	Ground
7	Ground
8	Ground
9	+5V
10	Ground
11	N.C.
12	DDC data
13	Horizontal sync signal
14	Vertical sync signal
15	DDC clock

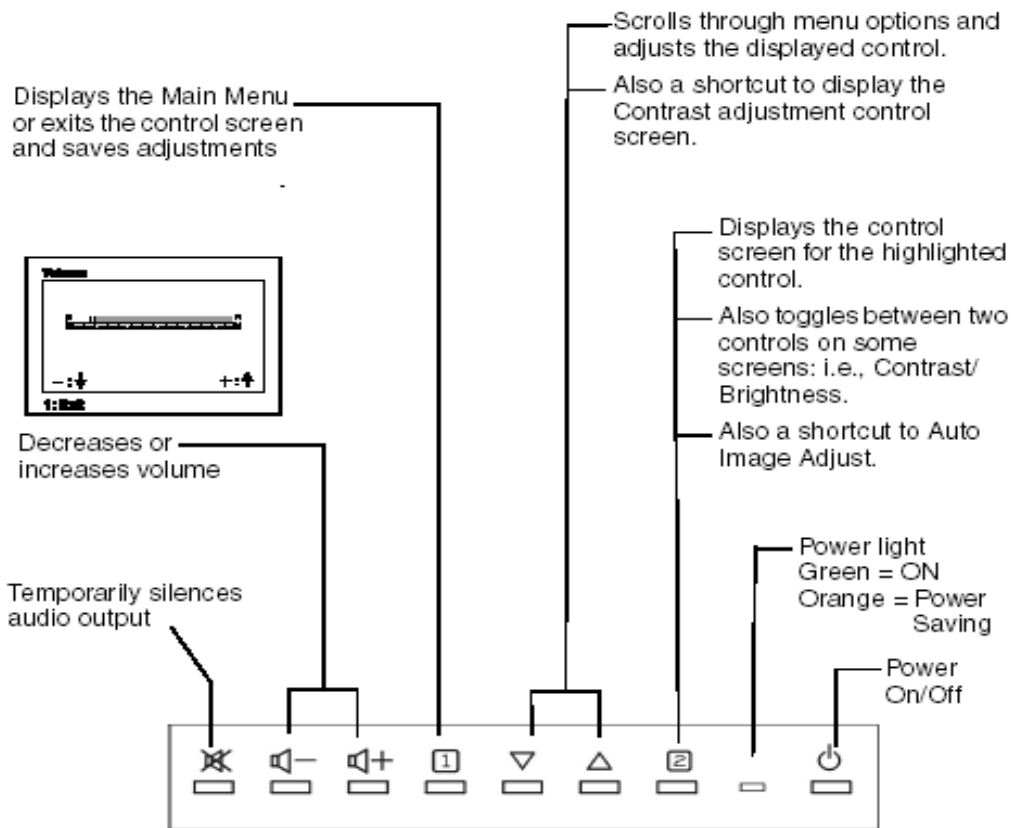
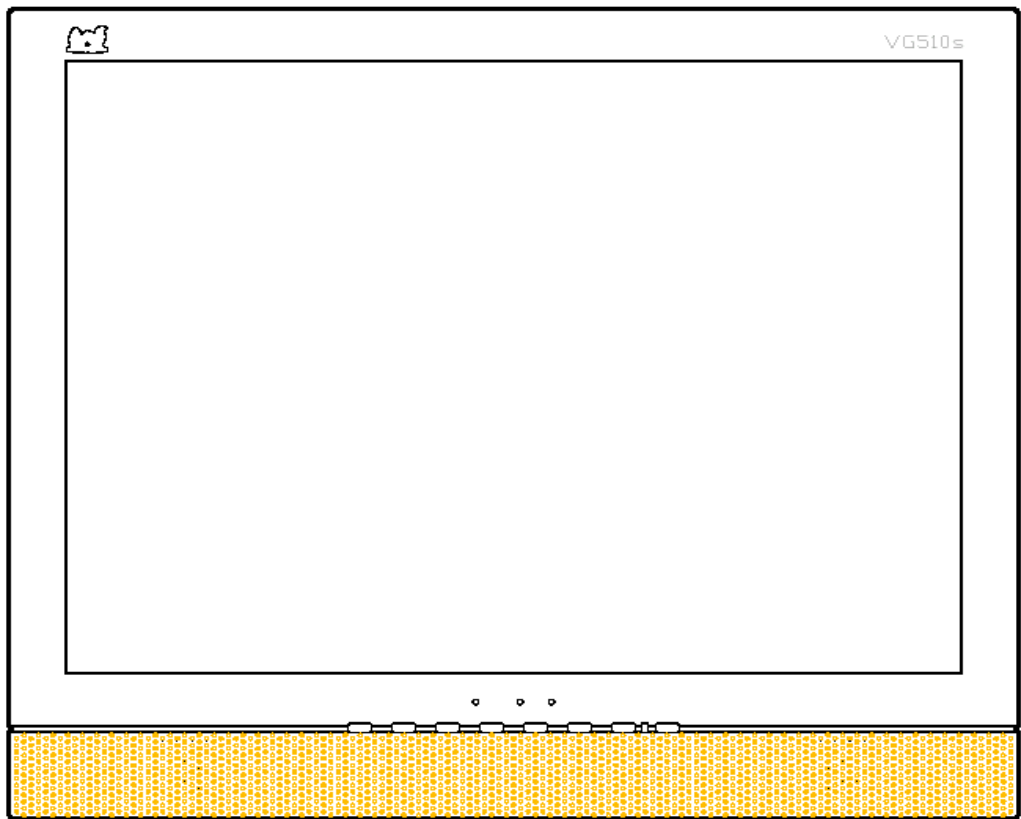
Table 3.1: 15 pin D-sub connector pin assignment

Pin Number	Pin Function
1	Red video input
2	Green video input
3	Blue video input
4	No Connection
5	Ground
6	Red video ground
7	Green video ground
8	Blue video ground
9	+5V
10	Ground
11	No connection
12	(SDA)
13	Horizontal sync (Composite sync)
14	Vertical sync
15	(SCL)

Table 3.2: 24 pin DVI-D connector pin assignment

Pin No.	Signal Name	Description
1	RX2-	TMDS negative differential input, channel 2
2	RX2+	TMDS positive differential input, channel 2
3	GND	Logic Ground
4	Reserved 4	Reserved. No connection
5	Reserved 5	Reserved. No connection
6	DDC-CLK	DDC2B Clock
7	DDC-DAT	DDC2B Data
8	Reserved 8	Reserved. No connection
9	RX1-	TMDS negative differential input, channel 1
10	RX1+	TMDS positive differential input, channel 1
11	GND	Logic Ground
12	Reserved 12	Reserved. No connection
13	Reserved 13	Reserved. No connection
14	VCCX	Power
15	GND	Logic Ground
16	SENS	SENSE Pin, Pull High
17	RX0-	TMDS negative differential input, channel 0
18	RX0+	TMDS positive differential input, channel 0
19	GND	Logic Ground
20	Reserved 20	Reserved. No connection
21	Reserved 21	Reserved. No connection
22	GND	Logic Ground
23	RXC+	TMDS positive differential input, reference clock
24	RXC-	TMDS negative differential input, reference clock

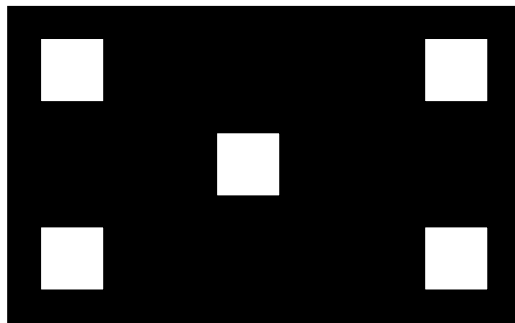
### 3. Front Panel Function Control Description





- 1) **MENU:**  
Enter to the OSD adjustment menu. It also used for go back to previous menu for sub-menu, and the change data don't save to memory.
- 2) **SELECT:**  
To confirm the current selection. It also used for go back to previous menu for sub-menu, and the change data will be save to memory.
- 3) **ADJUST ▼ :**  
To scroll up in sub menu or to increase value of selected item.
- 4) **ADJUST ▲ :**  
To scroll down in sub menu or to decrease value of selected item.
- 5) **POWER SWITCH**  
Pushing the power switch will turn the monitor on. Pushing it again to turn the monitor off.
- 6) **POWER INDICATOR**  
The LED will light with green color in normal on state, and will light with orange color in power saving mode.
- 7) **BRIGHTNESS/CONTRAST:**  
Press button UP/DOWN
- 8) **AUTOIMAGEADIUST:**  
press button [2]
- 9) **OSD LOCK AND UNLOCK:**  
press two buttons [1] & [UP] simultaneously for 10 seconds
- 10) **POWER LOCK AND UNLOCK:**  
press two buttons [1] & [DOWN] simultaneously for 10 seconds
- 11) **ALL RESET:**  
First,power off the monitor, un-plug the AC cord, then press [2] key at the same time and plug the AC cord
- 12) **FACTORY MODE:**  
First,power off the monitor, un-plug the AC cord and be sure the signal cable is connected (D-sub connected),then press [▲] key at the same time and plug the AC cord.
- 13) **RUN-IN MODE:**  
First ,power off the monitor, up-plug the AC cord and be sure the cable is not connected D-Sub not connected),then press [1] key at the same time and plug the AC cord.
- 14) **AUTO COLOR:**  
press three buttons [1] & [up] & [down], this function only use for 1024x768 60hz patten 42/of Chroma 2135 signal generator.

NOTE:



chroma Patten 42

## 4. Circuit Description

### WORKING THEOREM

#### A. DC-DC CONVERTER

This brick converts the 12V input voltage to 5V for panel use and 3.3V for controller use. It consists of a PWM IC (AP1501), flywheel Diode (D1), buck choke (L2), and capacitor (C70,71).

AP1501 is a PWM generator working at 150Khz.

Self protection features include a two stage frequency reducing current limit for the output switch and an over temperature shutdown for complete protection under fault condition.

#### B. A/D converter

The MRT V3 is a highly integrated TFT LCD controller chip with the latest MRT advanced imageprocessing technology and an integrated ADC/PLL. The MV3 has advanced programmable non-linear parametric cubic based scaling engine with proprietary sharpness adjustment and text enhancement. MV3 supports both analog and digital interfaced inputs with an internal ADC/PLL.

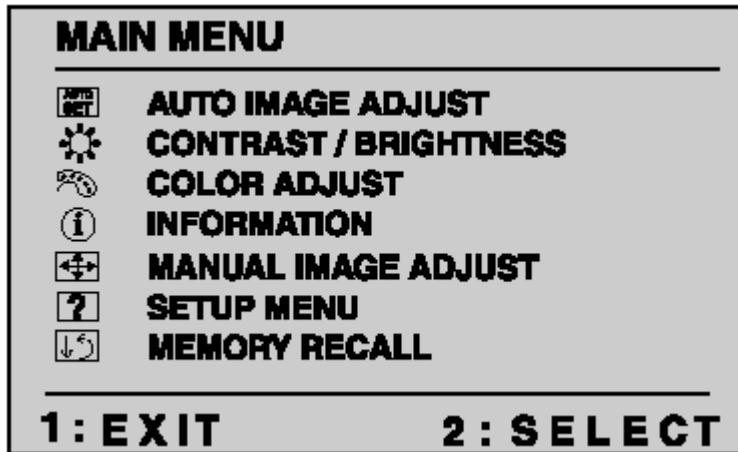
The MV3 has robust handling of a wide variety of TFT LCD panels and strong support of standard or non-standard input timings.

- . Integrated high speed triple 8-bit ADC/PLL support up to 140MHz for XGA-75Hz
- . Advanced image processing with proprietary non linear parametric cubic based scaling engineSupport dual interface with an integrated ADC/PLL
- . Robust auto configuration for input mode detection and clock frequency and phase recovery for standard or nonstandard input timing
- . Support video processing with on-chip 2D de-interlacing and color space conversion
- . Support programmable Gamma Correction
- . GPIO pins for flexible system design

#### D. MCU:

The MTV312M64 micro-controller is an 8051 CPU core embedded device specially tailored to LCD monitor applications. It include an 8051 CPU core, 1024-byte SRAM, 14 built-in PWM DACs, VESA DDC interface, 4 channel 6bit A/D converter, a 64 K-byte internal program Flash-ROM .

## 5. Adjusting Procedure

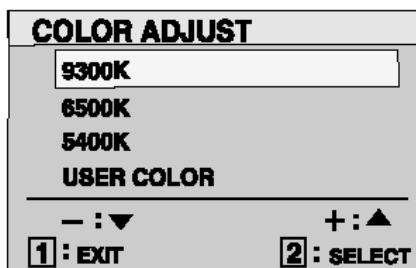


Auto Image Adjust automatically sizes, centers, and fine tunes the video signal to eliminate waviness and distortion. Press the [2] button to obtain a sharper image.

First, power off the monitor, un-plug the AC cord and be sure the signal cable is connected(D-sub connected) , then press “2” key at the same time and plug the AC cord to factory.



**Color Adjust** provides several color options: preset color temperatures and User Color which allows you to adjust red (R), green (G), and blue (B). The factory setting for this product is 6500K (6500 Kelvin).



**9300K** — Adds blue to the screen image for cooler white (used in most office settings with fluorescent lighting).

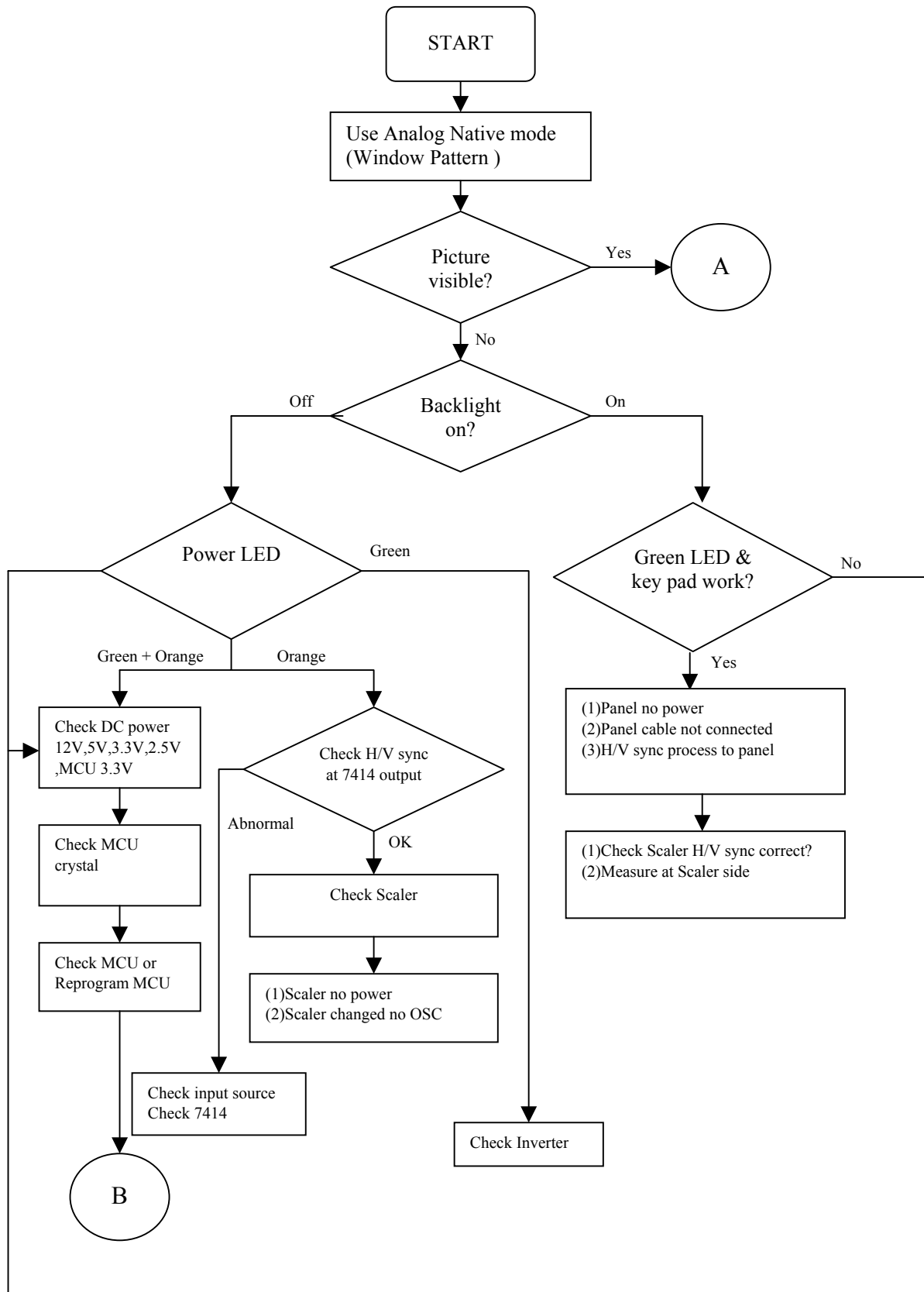
**6500K** — Adds red to the screen image for warmer white and richer red. Default setting.

**5400K** — Adds green to the screen image for a darker color.

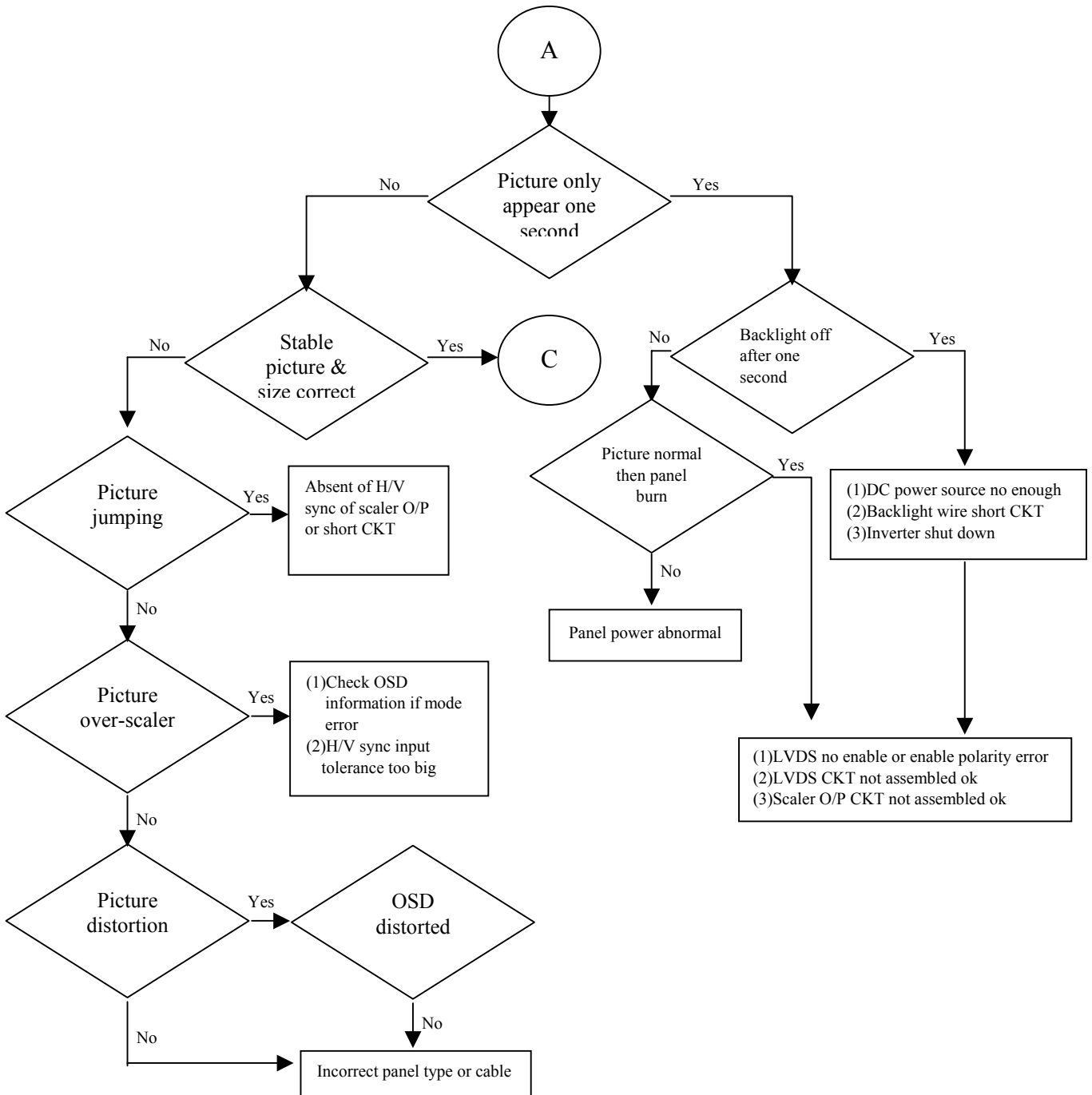
**User Color** — Individual adjustments for red, green, and blue.

- 1 To select color (R, G or B) press button [2].
- 2 To adjust selected color, press ▲ or ▼.
- 3 When you are finished making all color adjustments, press button [1] *twice*.

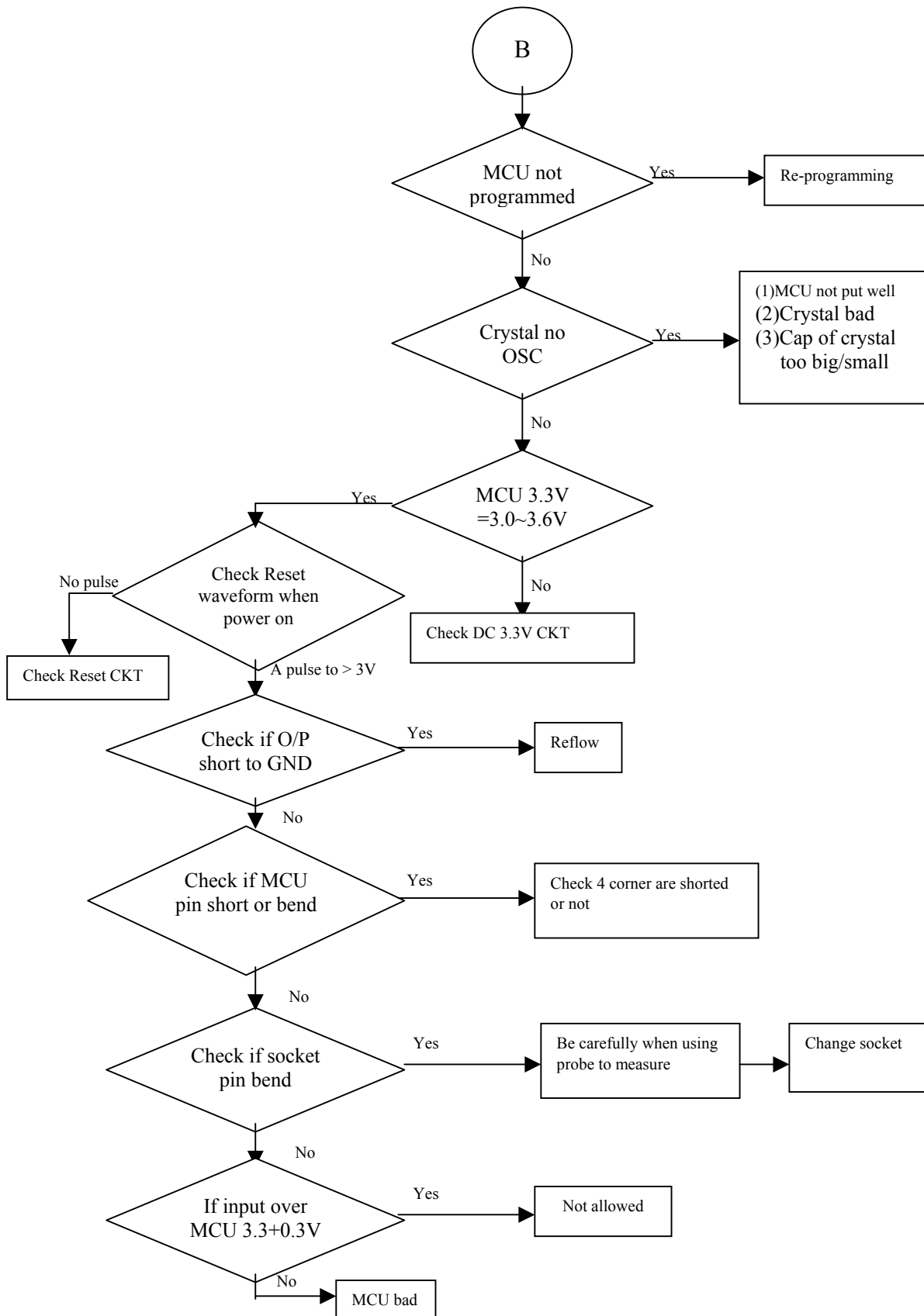
## 6. Trouble Shooting Flow Chart



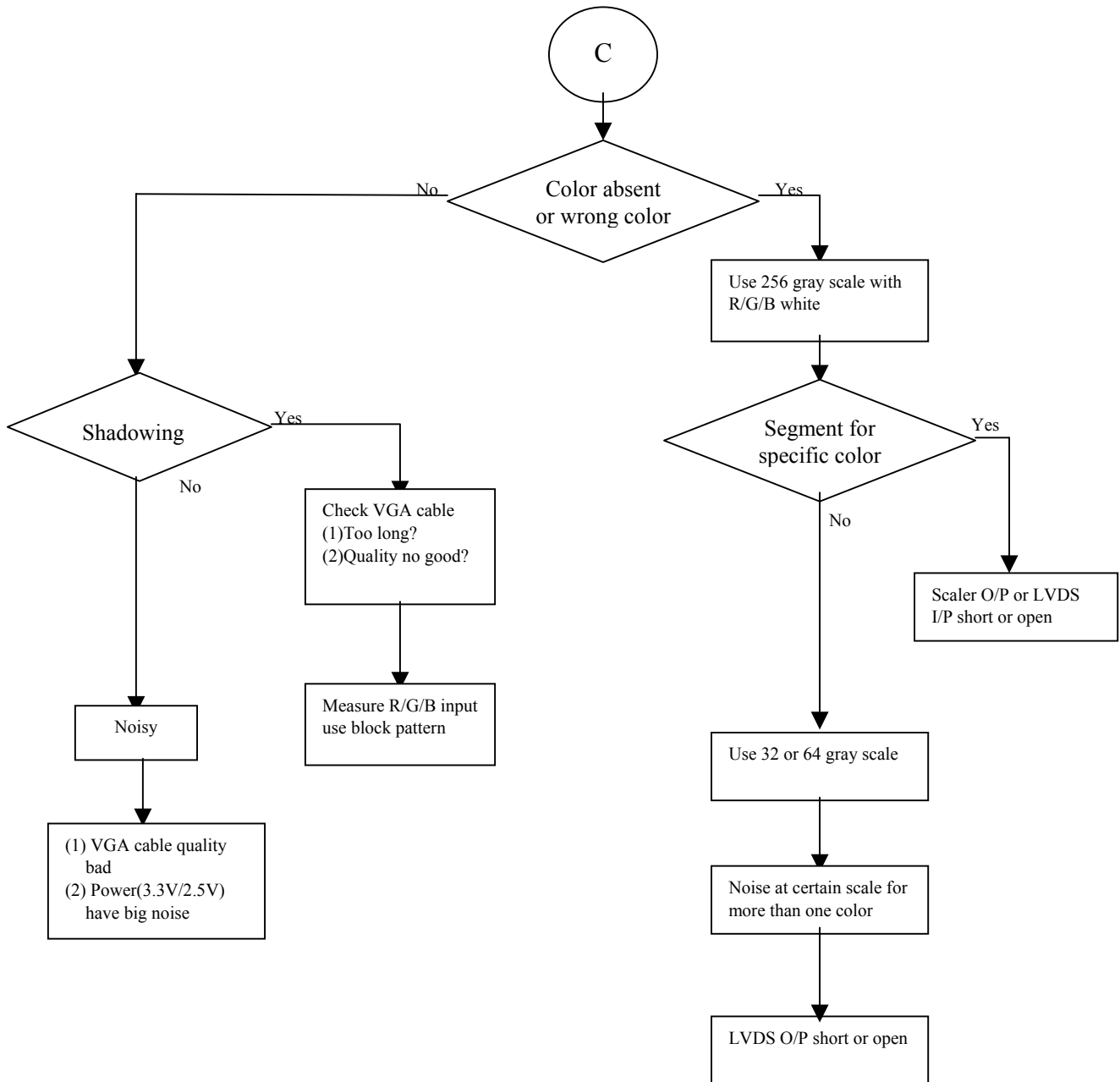
# Picture Visible



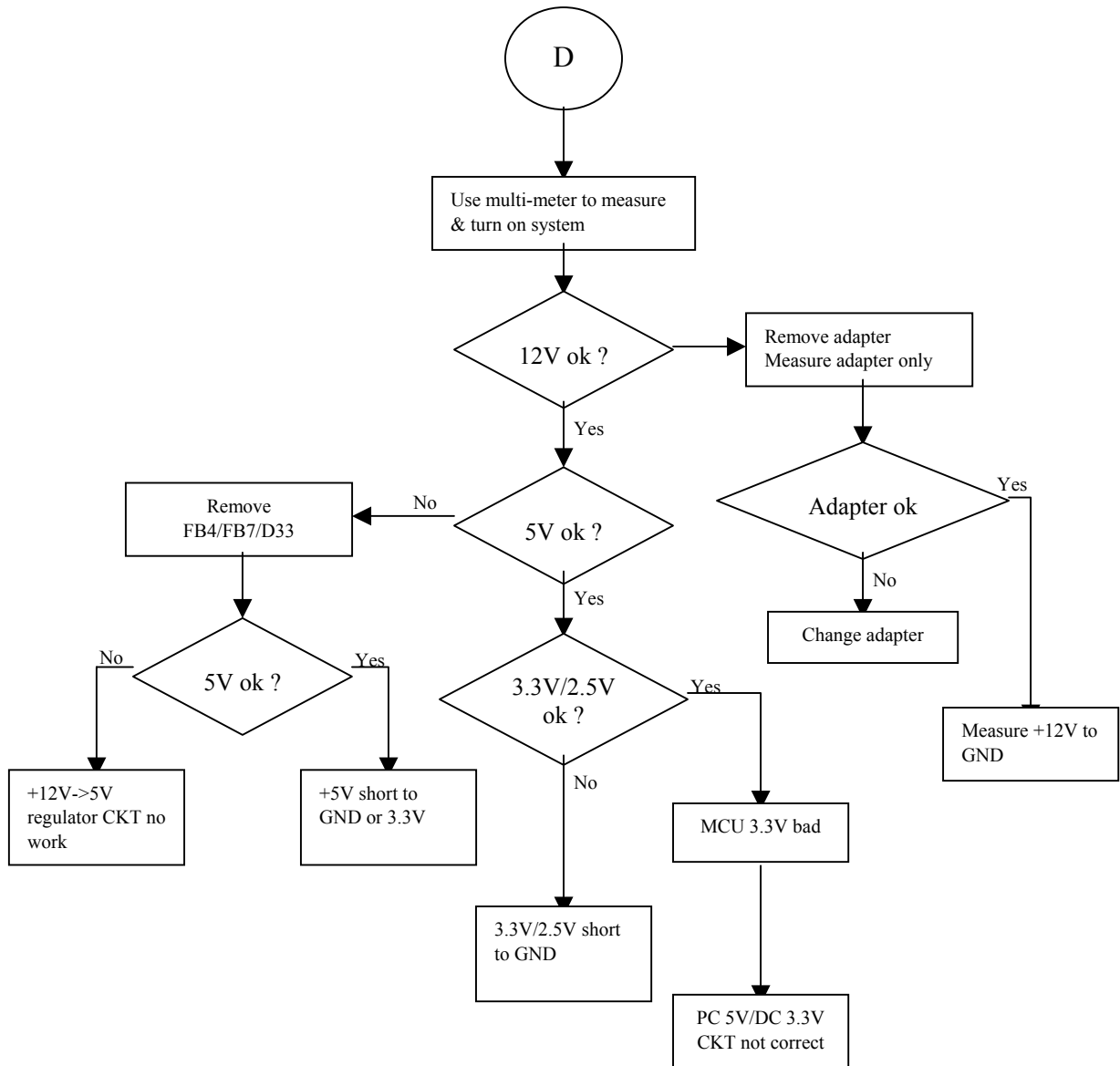
# MCU



## Picture Abnormal but Stable & size correct



# NO POWER





## 7. Recommended Spare Parts List

### VG510b RSPL

#### Recent Revision(s)

Item	Reference P/N	ViewSonic P/N	Description of revision(s)
10a	RSPKCL032D88FG-	E-SK-0412-0085	Vendor P/N removed
10b	RSPKCL034D88FG-	E-SK-0412-0085	Vendor P/N added
11a	GCABA2331D8F--C	M-MS-0808-9113	Vendor P/N removed
11b	GCABA2331D8FT1C	M-MS-0808-9113	Vendor P/N added
28a	QCODK0030D8D---	A-AU-0120-0034	Vendor P/N removed
28b	QCODK0030D8D--A	A-AU-0120-0034	Vendor P/N added
35a	RUNTP5475T8---D	B-SB-0221-0588	Vendor P/N removed
35b	RUNTP5475T8---E	B-SB-0221-0588	Vendor P/N added
42a	QCNWS0906-8026-	M-WR-0828-6016	Vendor P/N removed
42b	QCNWS0906-8026A	M-WR-0828-6016	Vendor P/N added
51	TINSE3073D8----	A-UG-0107-0533	Added to RSPL

Item	Revision History	ViewSonic P/N	Reference P/N	Description	Location
1		PL-PS-0715-0977	GSTN-2916D8F--A	BASE	BASE
2		M-CV-0830-2498	GCOVD2552D8F--A	BASE FRONT COVER	BASE FRONT COVER
3		M-CV-0830-2499	GCOVD2553D8F--A	BASE-BACK COVER	BASE-BACK COVER
4		M-BK-0805-0032	LANGF2132D8----	BASE METAL	BASE METAL
5		M-MS-0808-9382	PCUSG1634D8----	CUSHION-C	CUSHION-C
6		M-MS-0808-9383	PCUSG1633D8----	CUSHION-A	CUSHION-A
7		M-MS-0808-9384	PCUSG1632D8----	CUSHION-B	CUSHION-B
8		M-LB-0830-0696	PISLV0237D8----	ID LABEL	ID LABEL
9		M-MS-0808-9112	MHNGM0046D8----	HINGE ASSEMBLY	HINGE ASSEMBLY
10a	Old Vendor P/N	E-SK-0412-0085	RSPKCL032D88FG-	SPEAKER	SPEAKER
10b	New Vendor P/N	E-SK-0412-0085	RSPKCL034D88FG-	SPEAKER	SPEAKER
11a	Old Vendor P/N	M-MS-0808-9113	GCABA2331D8F--C	CAB-A	CAB-A
11b	New Vendor P/N	M-MS-0808-9113	GCABA2331D8FT1C	CAB-A	CAB-A
12		M-MS-0808-9114	GCABB1852D8F--A	CAB-B	CAB-B
13		PL-NB-0707-1072	JKNBP2358D8F---	KNOB	KNOB
14		M-MS-0808-9115	HDECP1987D8F---	LENS	LENS
15		C-BC-0302-0560	GCOVD2551D8F--A	BACK COVER	BACK COVER
16		M-MS-0808-9116	HBDEGE1391D8----	VE-LOGO	VE-LOGO
17		M-BK-0805-0033	LANGF2131D8----	VESA METAL	VESA METAL
18		M-BK-0805-0034	LANGF2133D8----	D-SUB METAL	D-SUB METAL
19		M-GUM-0808-9117	PGUM-1124D8----	VESA GUM	VESA GUM
20		M-MS-0808-9118	HBDEGE1389D8----	VIEWSONIC TEXT LOGO	VIEWSONIC TEXT LOGO
21		M-MS-0808-9119	HBDEGE1390D8----	LOGO PLATE (BIRDS LOGO)	LOGO PLATE (BIRDS LOGO)
22		M-MS-0808-5840	LBOSM1069D8----	BOSS FOR D-SUB AND DVI	BOSS FOR D-SUB AND DVI
23		M-BK-0805-0012	LANGF2063D8--A	KENSINGTON BRACKET	KENSINGTON BRACKET
24		B-CB-0206-0169	DPWBN5570T8----	OSD-SW BOARD ASS'Y	OSD-SW BOARD ASS'Y
25		A-AD-0114-0212	RUNTP5579D8----	AC ADAPTOR (VSC 12V/3.3A)	AC ADAPTOR (VSC 12V/3.3A)
26		A-CD-VG510B	DDSKC0043D8----	INF FILE DEVICE	INF FILE DEVICE
27		A-VC-0101-0271	QCODS1584D8D--	SIGNAL CABLE	SIGNAL CABLE
28a	Old Vendor P/N	A-AU-0120-0034	QCODK0030D8D---	AUDIO CABLE	AUDIO CABLE
28b	New Vendor P/N	A-AU-0120-0034	QCODK0030D8D--A	AUDIO CABLE	AUDIO CABLE
29		A-PC-0106-0180	QACC-1126D8D---	POWER CORD	POWER CORD
30		A-PC-0106-0181	QACC-1228T8D-F-	POWER CORD(EU 1.8M BLACK)	POWER CORD
31		M-MS-0808-9120	SPAKA6557D8----	PACKING	PACKING
32		P-BX-0601-0922	SPAKC3630D8--C	CARTON	CARTON
33		M-LCD-0826-0180	VVLLQ150X1LGN2-	SHARP PANEL (15")	SHARP PANEL (15")
34		B-IF-0222-0049	DPWBN5559T8----	I/F BOARD ASS'Y	I/F BOARD ASS'Y
35a	Old Vendor P/N	B-SB-0221-0588	RUNTP5475T8---D	INVERTER BOARD	INVERTER BOARD
35b	New Vendor P/N	B-SB-0221-0588	RUNTP5475T8---E	INVERTER BOARD	INVERTER BOARD
36		M-BK-0805-0035	LANGF2130D8----	MAIN METAL	MAIN METAL
37		M-BK-0805-0036	PSLDM6569D8----	I/F SHIELD	I/F SHIELD
38		M-BK-0805-0037	PSLDM6568D8----	INVERTER SHIELD	INVERTER SHIELD
39		A-VC-0101-0358	QCODS1695T8----	LVDS CABLE	LVDS CABLE
40		M-WR-0828-6014	QCNWS0905-8028-	INVERTER WIRE	INVERTER WIRE
41		M-WR-0828-6015	QCNWS0904-8038-	SPEAKER WIRE	AUDIO WIRE
42a	Old Vendor P/N	M-WR-0828-6016	QCNWS0906-8026-	OSD-SW WIRE	OSD-SW WIRE
42b	New Vendor P/N	M-WR-0828-6016	QCNWS0906-8026A	OSD-SW WIRE	OSD-SW WIRE
43		E-FS-0410-0099	QFS-Z402F-81UAA	FUSE 4A	F1
44		E-IC-0401-3972	VSIMVXRL-----A	SCALER MRT VXRL	U13 (SCALER IC)
45		M-MS-0808-8003	QSOCL1642T844--	44PIN PLCC IC SOCKET	U7 (44 PIN IC SOCKET)
46		E-X-0415-0127	RCRSL1167T8----	OSCILLATOR (12.0MHZ)	X2.(12.0 MHZ),
47		E-X-0415-0141	RCRSL11147T8----	OSCILLATOR (22.1184MHZ)	X1.(11.059MHZ)
48		E-IC-0401-2584	VSI24C16-----	EEPROM	U8
49		M-FC-0809-0789	QCNC2106D8----	30 PIN CONNECTOR	CON5 (30 PIN PLUG)
50		M-MS-0808-9385	PCUSG1638D8----	CUSHION FOR CAB-B	CUSHION FOR CAB-B
51	Added 04/12/04	A-UG-0107-0533	TINSE3073D8----	USER'S MANUAL	USER'S MANUAL

VG510s RSPL

Recent Revision(s)

Item	Reference P/N	ViewSonic P/N	Description of revision(s)
10a	RSPKCL032D88FG-	E-SK-0412-0085	Vendor P/N removed
10b	RSPKCL034D88FG-	E-SK-0412-0085	Vendor P/N added
11a	GCABA2331D8F---	M-MS-0808-9121	Vendor P/N removed
11b	GCABA2331D8FT1-	M-MS-0808-9121	Vendor P/N added
26a	DDSKC0043D8----	A-CD-VG510B	Vendor P/N removed
26b	DDSKC0044D8----	A-CD-VG510B	Vendor P/N added
28a	QCODK0030D8D---	A-AU-0120-0034	Vendor P/N removed
28b	QCODK0030D8D--A	A-AU-0120-0034	Vendor P/N added
32a	SPAKC3630D8---C	P-BX-0601-0922	Vendor P/N removed
32b	SPAKC3630D8----	P-BX-0601-0966	Vendor P/N added
35a	RUNTP5475T8---D	B-SB-0221-0588	Vendor P/N removed
35b	RUNTP5475T8---E	B-SB-0221-0588	Vendor P/N added
42a	QCNWS0905-8028-	M-WR-0828-6014	Vendor P/N removed
42b	QCNWS0906-8026A	M-WR-0828-6014	Vendor P/N added
51	TINSE3075D8----	A-UG-0107-0534	Added to RSPL

Item	Revision History	ViewSonic P/N	Reference P/N	Description	Location
1		PL-PS-0715-0978	GSTN-2916D8F---	BASE	BASE
2		M-CV-0830-2500	GCOVD2552D8F---	BASE FRONT COVER	BASE FRONT COVER
3		M-CV-0830-2501	GCOVD2553D8F---	BASE-BACK COVER	BASE-BACK COVER
4		M-BK-0805-0032	LANGF2132D8---	BASE METAL	BASE METAL
5		M-MS-0808-9382	PCUSG1634D8----	CUSHION-C	CUSHION-C
6		M-MS-0808-9383	PCUSG1633D8----	CUSHION-A	CUSHION-A
7		M-MS-0808-9384	PCUSG1632D8----	CUSHION-B	CUSHION-B
8		M-LB-0813-0911	PISLV0233D8----	ID LABEL	ID LABEL
9		M-MS-0808-9112	MHNGM0046D8----	HINGE ASSEMBLY	HINGE ASSEMBLY
10a	Old Vendor P/N	E-SK-0412-0085	RSPKCL032D88FG-	SPEAKER	SPEAKER
10b	New Vendor P/N	E-SK-0412-0085	RSPKCL034D88FG-	SPEAKER	SPEAKER
11a	Old Vendor P/N	M-MS-0808-9121	GCABA2331D8F---	CAB-A	CAB-A
11b	New Vendor P/N	M-MS-0808-9121	GCABA2331D8FT1-	CAB-A	CAB-A
12		M-MS-0808-9122	GCABB1852D8F---	CAB-B	CAB-B
13		PL-NB-0707-1072	JKNBP2358D8F---	KNOB	KNOB
14		M-MS-0808-9115	HDECP1987D8F---	LENS	LENS
15		C-BC-0302-0561	GCOVD2551D8F---	BACK COVER	BACK COVER
16		M-MS-0808-9123	HBIDGE1388D8----	VE-LOGO	VE-LOGO
17		M-BK-0805-0033	LANGF2131D8---	VESA METAL	VESA METAL
18		M-BK-0805-0034	LANGF2133D8----	D-SUB METAL	D-SUB METAL
19		M-MS-0808-9117	PGUM-1124D8----	VESA GUM	VESA GUM
20		M-MS-0808-9118	HBIDGE1389D8----	VIEWSONIC TEXT LOGO	VIEWSONIC TEXT LOGO
21		M-MS-0808-9119	HBIDGE1390D8----	LOGO PLATE (BIRDS LOGO)	LOGO PLATE (BIRDS LOGO)
22		M-MS-0808-5840	LBOSM1069D8----	BOSS FOR D-SUB AND DVI	BOSS FOR D-SUB AND DVI
23		M-BK-0805-0012	LANGF2063D8---A	KENSINGTON BRACKET	KENSINGTON BRACKET
24		B-CB-0206-0169	DPWBN5570T8----	OSD-SW BOARD ASS'Y	OSD-SW BOARD ASS'Y
25		A-AD-0114-0212	RUNTP5579D8----	AC ADAPTOR (VSC 12V/3.3A)	AC ADAPTOR (VSC 12V/3.3A)
26a	Old Vendor P/N	A-CD-VG510B	DDSKC0043D8----	INF FILE DEVICE	INF FILE DEVICE
26b	New Vendor P/N	A-CD-VG510B	DDSKC0044D8----	INF FILE DEVICE	INF FILE DEVICE
27		A-VC-0101-0271	QCODS1584D8D---	SIGNAL CABLE	SIGNAL CABLE
28a	Old Vendor P/N	A-AU-0120-0034	QCODK0030D8D---	AUDIO CABLE	AUDIO CABLE
28b	New Vendor P/N	A-AU-0120-0034	QCODK0030D8D--A	AUDIO CABLE	AUDIO CABLE
29		A-PC-0106-0180	QACC-1126D8D---	POWER CORD	POWER CORD
30		A-PC-0106-0181	QACC-1228T8D-F-	POWER CORD(EU 1.8M BLACK)	POWER CORD
31		M-MS-0808-9120	SPAKA6557D8----	PACKING	PACKING
32a	Old Vendor P/N	P-BX-0601-0922	SPAKC3630D8---C	CARTON	CARTON
32b	New Vendor P/N	P-BX-0601-0966	SPAKC3630D8----	CARTON	CARTON
33		M-LCD-0826-0180	VVLLQ150X1LGN2-	SHARP PANEL (15")	SHARP PANEL (15")
34		B-IF-0222-0049	DPWBN5559T8----	I/F BOARD ASS'Y	I/F BOARD ASS'Y
35a	Old Vendor P/N	B-SB-0221-0588	RUNTP5475T8---D	INVERTER BOARD	INVERTER BOARD
35b	New Vendor P/N	B-SB-0221-0588	RUNTP5475T8---E	INVERTER BOARD	INVERTER BOARD
36		M-BK-0805-0035	LANGF2130D8----	MAIN METAL	MAIN METAL
37		M-BK-0805-0036	PSLDM6569D8----	I/F SHIELD	I/F SHIELD
38		M-BK-0805-0037	PSLDM6568D8----	INVERTER SHIELD	INVERTER SHIELD
39		A-VC-0101-0358	QCODS1695T8----	LVDS CABLE	LVDS CABLE
40		M-WR-0828-6014	QCNWS0905-8028-	INVERTER WIRE	INVERTER WIRE
41		M-WR-0828-6015	QCNWS0904-8038-	SPEAKER WIRE	AUDIO WIRE
42a	Old Vendor P/N	M-WR-0828-6014	QCNWS0905-8028-	INVERTER WIRE	INVERTER WIRE
42b	New Vendor P/N	M-WR-0828-6014	QCNWS0906-8026A	OSD-SW WIRE	OSD-SW WIRE
43		E-FS-0410-0099	QFS-Z402F-81UAA	FUSE 4A	F1
44		E-IC-0401-3972	VSIMVXRL-----A	SCALER MRT VXRL	U13 (SCALER IC)
45		M-MS-0808-8003	QSOCI1642T844--	44PIN PLCC IC SOCKET	U7 (44 PIN IC SOCKET)
46		E-X-0415-0127	RCRSL1167T8----	OSCILLATOR (12.0MHZ)	X2.(12.0 MHZ),
47		E-X-0415-0141	RCRSL1114T8----	OSCILLATOR (22.1184MHZ)	X1.(11.059MHZ)
48		E-IC-0401-2584	VSI24C16-----	EEPROM	U8
49		M-FC-0809-0789	QCNC2P106D8----	30 PIN CONNECTOR	CON5 (30 PIN PLUG)
50		M-MS-0808-9385	PCUSG1638D8----	CUSHION FOR CAB-B	CUSHION FOR CAB-B
51	Added 4/12/04	A-UG-0107-0534	TINSE3075D8----	USER'S MANUAL	USER'S MANUAL

**VG510b-1 BOM**

Item	ViewSonic P/N	Ref. P/N	Description	Location	Q'ty
1	PL-PS-0715-0977	GSTN-2916D8F--A	BASE	BASE	1
2	M-CV-0830-2498	GCOVD2552D8F--A	BASE FRONT COVER	BASE FRONT COVER	1
3	M-CV-0830-2499	GCOVD2553D8F--A	BASE-BACK COVER	BASE-BACK COVER	1
4	M-BK-0805-0032	LANGF2132D8----	BASE METAL	BASE METAL	1
5	M-MS-0808-9382	PCUSG1634D8----	CUSHION-C	CUSHION-C	1
6	M-MS-0808-9383	PCUSG1633D8----	CUSHION-A	CUSHION-A	2
7	M-MS-0808-9384	PCUSG1632D8----	CUSHION-B	CUSHION-B	1
8	M-MS-0808-9112	MHNGM0046D8----	HINGE ASSEMBLY	HINGE ASSEMBLY	1
9	#N/A	XBSS30P06000--	SCREW	FOR HINGE*4, FOR BASE METAL*4	8
10	E-SK-0412-0085	RSPKCL032D88FG-	SPEAKER	SPEAKER	1
11	M-MS-0808-9113	GCABA2331D8F--C	CAB-A	CAB-A	1
12	M-MS-0808-9114	GCABB1852D8F--A	CAB-B	CAB-B	1
13	PL-NB-0707-1072	JKNBP2358D8F---	KNOB	KNOB	1
14	M-MS-0808-9115	HDECP1987D8F---	LENS	LENS	1
15	C-BC-0302-0560	GCOVD2551D8F--A	BACK COVER	BACK COVER	1
16	M-MS-0808-9116	HBDGE1391D8----	VE-LOGO	VE-LOGO	1
17	M-BK-0805-0033	LANGF2131D8----	VESA METAL	VESA METAL	1
18	M-BK-0805-0034	LANGF2133D8----	D-SUB METAL	D-SUB METAL	1
19	M-MS-0808-9117	PGUM-1124D8----	VESA GUM	VESA GUM	4
20	M-MS-0808-9118	HBDGE1389D8----	VIEWSONIC TEXT LOGO	VIEWSONIC TEXT LOGO	1
21	M-MS-0808-9119	HBDGE1390D8----	LOGO PLATE (BIRDS MARK)	LOGO PLATE (BIRDS MARK)	1
22	#N/A	XEBSB30P14000--	CAB-B&CAB-A	CAB-B&CAB-A	2
23	#N/A	XBPSB40P10JS0--	HINGE SUPPORT WITH MAIN METAL*4	HINGE SUPPORT WITH MAIN METAL*4	4
24	#N/A	LX-BZ1721D8----	SCREW	FOR CAB-B WITH PANEL*4	4
25	#N/A	LX-BZ1726D8----	SCREW	PANEL WITH MAIN METAL	4
26	#N/A	LX-BZ1724D8----	SCREW	MAIN METAL WITH CAB-B	2
27	#N/A	PISLV0231D8----	WASHER	WASHER	4
28	M-MS-0808-5840	LBOSM1069D8----	SCREW BOSS	BOSS FOR D-SUB AND DVI	4
29	M-LB-0830-0696	PISLV0237D8----	ID LABEL	ID LABEL	1
30	M-SCW-0824-6738	XEPSN26P06000--	SCREW	FOR KEY PCB	1
31	#N/A	XBSS30P06000--	SCREW	FOR D-SUB&CAB-B	2
32	#N/A	XBSSD30P04000--	SCREW	FOR D-SUB METAL	4
33	#N/A	XBMSD30P05000--	SCREW	FOR I/F BOARD*4, INVERTER BOARD*3	7
34	#N/A	PCUSS1500D8----	CUSHION FOR CAB-A	CUSHION FOR CAB-A	1
35	M-BK-0805-0012	LANGF2063D8--A	KENSINGTON BRACKET	KENSINGTON BRACKET	1
36	#N/A	LX-TZ0001D8SC-A	SPEAKER SCREW	SPEAKER SCREW	4
37	#N/A	LX-BZ1717D8----	SCREW	FOR INVERTER*4, I/F SHIELD*6	10
38	#N/A	PCUSG1636D8----	EVA LABEL	EVA FOR VESA METAL	1
39	M-MS-0808-9385	PCUSG1638D8----	CUSHION FOR CAB-B	CUSHION FOR CAB-B	1
40	A-AD-0114-0212	RUNTP5579D8----	AC ADAPTOR (VSC 12V/3.3A)	AC ADAPTOR (VSC 12V/3.3A)	1
41	#N/A	TLAB-5532D8----	MODEL LABEL	MODEL LABEL	1
42	A-UG-0107-0533	TINSE3073D8----	USER'S MANUAL	USER'S MANUAL	1
43	A-CD-VG510B	DDSKC0043D8----	INF FILE DEVICE	INF FILE DEVICE	1
44	A-VC-0101-0271	QCODS1584D8D---	SIGNAL CABLE	SIGNAL CABLE	1
45	A-PC-0106-0180	QACC-1126D8D---	AC POWER CORD	AC POWER CORD	1
46	M-LB-0813-0527	TLABZ3903D8----	UPC LABEL	UPC LABEL	1
47	A-AU-0120-0034	QCODK0030D8D---	AUDIO CABLE	AUDIO CABLE	1
48	A-PC-0106-0181	QACC-1228T8D-F-	POWER CORD (EU 1.8M BLACK)	POWER CORD (EU 1.8M BLACK)	1
49	#N/A	TLAB-5523D8----	S/N LABEL	S/N LABEL	1
50	M-MS-0808-9120	SPAKA6557D8----	PACKING	PACKING	1
51	P-BX-0601-0922	SPAKC3630D8--C	CARTON	CARTON	1
52	M-MS-0808-8796	SSAKH1343D8-T--	BAG	BAG	1
53	#N/A	SPAKW1204D8----	PALLET	PALLET	1
54	M-MS-0808-8401	PISL-1245D8----	PROTECT SHEET	PROTECT SHEET	1
55	M-MS-0808-5875	SPAKK1703T8Z---	CONNER PAPER	CONNER PAPER	(4 per pallet)
56	#N/A	SPAKK6322D8----	CONNER PAPER	CONNER PAPER	(2 per pallet)
57	#N/A	SPAKK6357D8----	CONNER PAPER	CONNER PAPER	(4 per pallet)
58	#N/A	SPAKK6364D8----	CONNER PAPER	CONNER PAPER	(2 per pallet)
59	#N/A	ZTAPEY010G080--	TAPE	TAPE W=100MM FOR EPS	80mm
60	#N/A	ZTAPEY030G045--	TAPE	TAPE FOR CAB-A CORNER	160mm

**VG510b-1 LCD BOM**

Item	ViewSonic P/N	Ref. P/N	Description	Location	Q'ty
1	M-LCD-0826-0180	VVLLQ150X1LGN2-	SHARP PANEL (15")	SHARP PANEL (15")	1
2	B-IF-0222-0049	DPWBN5559T8----	I/F BOARD ASS'Y	I/F BOARD ASS'Y	1
3	B-SB-0221-0588	RUNTP5475T8---D	INVERTER BOARD	INVERTER BOARD	1
4	B-CB-0206-0169	DPWBN5570T8----	OSD-SW BOARD ASS'Y	OSD-SW BOARD ASS'Y	1
5	M-BK-0805-0035	LANGF2130D8----	MAIN METAL	MAIN METAL	1
6	M-BK-0805-0036	PSLDM6569D8----	I/F SHIELD	I/F SHIELD	1
7	M-BK-0805-0037	PSLDM6568D8----	INVERTER SHIELD	INVERTER SHIELD	1
8	#N/A	PISLS1234D8----	INVERTER SHIELD MYLAR	INVERTER SHIELD MYLAR	1
9	#N/A	PISLV0234D8----	FOR INVERTER MYLAR	FOR INVERTER MYLAR	1
10	#N/A	TLABZ4916T8----	HIGH VOLTAGE LABEL	HIGH VOLTAGE LABEL	1
11	A-VC-0101-0358	QCODS1695T8----	LVDS CABLE	LVDS CABLE	1
12	M-WR-0828-6014	QCNWS0905-8028-	INVERTER WIRE	INVERTER WIRE	1

**VG510b-1 BOM**

Item	ViewSonic P/N	Ref. P/N	Description	Location	Q'ty
13	M-WR-0828-6016	QCNWS0906-8026-	OSD-SW WIRE	OSD-SW WIRE	1
14	M-WR-0828-6015	QCNWS0904-8038-	SPEAKER WIRE	SPEAKER WIRE	1
15	#N/A	ZTAPEL025S030--	TAPE	100mm*4(PANEL WITH MAIN METAL),50mm*1(I/F COVER WITH D-SUB METAL),50mm*1(PANEL GROUNDING)	500mm
16	#N/A	PCUSS1264T8----	SPONGE	15mm*10mm*10mm	2
17	#N/A	PCUSS1395D8----	SPONGE	10mm*10mm*10mm	1
18	#N/A	ZTAPEU025K030--	COPPER	COPPER	50mm
19	#N/A	PCUSS1201T8----	SPONGE	20mm*4mm*3mm	1
20	#N/A	PRDAA6380D8----	HEAT SINK FOR U13	HEAT SINK FOR U13	1
21	#N/A	ZTAPEZ026C020--	TAPE	50mm*1(KEY PAD WITH INVERTER CABLE)	50mm
22	#N/A	ZTAPEN018D030U-	CG TAPE FOR LVDS CABLE	CG TAPE FOR LVDS CABLE	35mm

**VG510b-1 Key BOM**

Item	ViewSonic P/N	Ref. P/N	Description	Location	Q'ty
1	#N/A	QPWB-5570T8----	CONTROL BOARD	SW BOARD	1
2	M-SW-0815-0212	QSW-A1129D8----	SWITCH	SW1,SW2,SW3,SW4,SW5,SW6,SW7,SW8	8
3	#N/A	VSP-260YL3YG3-A	LED	SMT LED/4PIN	1
4	#N/A	VCNCP0906REJST-	CONNECTOR 6PIN		1
5	#N/A	VRMDNVG--103J-A	SMT 10KO ±5% 1/16W	R7	1
6	#N/A	VRMDNVG--000J-A	SMT 00 ±5% 1/16W	L1,L2,L3,L4,L5	5
7	#N/A	VRMDNVG--223J-A	SMT 22KO ±5% 1/16W	R2,R5	2
8	#N/A	VRMDNVG--473J-A	SMT 47KO ±5% 1/16W	R3,R6	2
9	#N/A	VRMDNVG--512J-A	SMT 5.1KO ±5% 1/16W	R1,R4	2
10	#N/A	VCICHN1HH101J-A	C 100pF ±5% 50V	C1,C2,C3	3

**VG510b-1 Main BOM**

Item	ViewSonic P/N	Ref. P/N	Description	Location	Q'ty
1	#N/A	VSI24LC16B----	EEPROM IC (24LC16)	U8	1
2	E-X-0415-0127	RCSRSL1167T8----	OSCILLATOR (12.0MHZ)	X2.(12.0 MHZ),	1
3	E-X-0415-0141	RCSRSL1114T8----	OSCILLATOR (22.1184MHZ)	X1.(11.059MHZ)	1
4	E-IC-0401-2137	VSI24C21-----	EEPROM IC (24C21)	U15,U5.	2
5	#N/A	RFIL-5147T8111-	BEAD	L2.	1
6	#N/A	QJAKD1013T8DT--	POWER JACK	JP2.(DC POWER JACK),	1
7	#N/A	VCNCP0904REJST-	CONNECTOR 4PIN	J2.(SPEAKER CON),	1
8	#N/A	VCNCP0905REJST-	CONNECTOR 5PIN	JP1.(INVERTER CON),	1
9	#N/A	VCNCP0906REJST-	CONNECTOR 6PIN	JP6.	1
10	#N/A	QCNC1173T8----	VGA CONNECTOR	J1.(DB-15),	1
11	E-C-0404-3972	VCEACU1CH477M-P	E 470UF ±20% 16V	C1.C11.C160.C38.C39.C40.	6
12	#N/A	PRDA-1252D8----	RADIATOR FOR U3	HEAT SINK FOR U3	1
13	E-IC-0401-2922	VSIMTV312M64--S	MCU IC (MTV312M64)	U7	1
14	#N/A	QPWB-5559T8--1-	I/F BOARD	I/F BOARD	1
15	E-IC-0401-3972	VSIMVXRL-----A	Mstar Scaler IC (MRT VXRL)	U13 (SCALER IC)	1
16	E-IC-0401-2118	VSAIC1084-33-A	Power Regulator 3.3V IC (AIC1084-33)	U1.	1
17	M-MS-0808-8003	QSOC11642T844--	IC SOCKET 44PIN	U7 (44 PIN IC SOCKET)	1
18	#N/A	QCNC11979T8----	CONNECTOR 30PIN	CON5 (30 PIN PLUG)	1
19	#N/A	QCNC11161T8----	CONNECTOR DVI	CN1.(CON-DVI),	1
20	M-MS-0808-8997	QCNC2120T8----	CONNECTOR 20PIN	CN2.( CON 20 PIN),	1
21	#N/A	VST2N3904----A	TRANSISTOR (NPN)	Q1.Q10.Q12.Q9.	4
22	#N/A	VST2N3906----A	TRANSISTOR (NPN)	Q3.Q6.Q7.Q8.	4
23	#N/A	VSDSS22-----A	SCHOTTKY DIODE	D1.	1
24	#N/A	VSDAN202UT106-A	DIODE	D19.D2.	2
25	#N/A	VSDBAV99-----A	DIODE (75V/4NS/250mW)	D23.D24.D25.D26.D27.D28.D29.D30.D4.D5.D6.	11
26	E-D-0403-0657	VSZRLZ5.6B----A	ZENER DIODE 5.6V	D10.D11.D18.D20.D21.D22.D3.D7.D8.D9.	10
27	E-D-0403-0531	VSD1N4148-----A	DIODE	D14.D15.	2
28	E-FS-0410-0099	QFS-Z402F-81UAA	FUSE 4A 125V	F1.	1
29	#N/A	RFIL-5231T8600A	BEAD CORE (0805) (100MHZ/600(RDC))	FB11.FB9.(0805),R15.R19.R23.	5
30	#N/A	RFIL-5187T8500A	BEAD CORE (1206) (100MHZ/500(RDC))	FB4.FB5.	2
31	#N/A	RFIL-5233T8700A	BEAD CORE	FB1.FB22.FB26.FB3.FB30.FB34.FB8.(1812),	7
32	#N/A	RNWRB1618T8472A	R 8PIN 4.7Kohm	RP1.RP4.	2
33	#N/A	VRMDNVG--000J-A	SMT 00 ±5% 1/16W	FB12.FB13.FB14.FB15.FB16.FB17.FB18.FB19.FB20.FB23.FB24.FB25.FB27.FB31.FB32.FB33.FB35.FB6.R149.R5.R7.	21
34	#N/A	VRMDNVG--100J-A	SMT 100 ±5% 1/16W	R64.	1
35	#N/A	VRMDNVG--101J-A	SMT 1000 ±5% 1/16W	R111.R12.R122.R123.R13.R137.R140.R141.R147.R29.R30.R31.R34.R35.R46.R47.R51.R54.R63.R71.R74.R75.R76.R80.R81.R82.R85.R87. R91.	29
36	#N/A	VRMDNVG--102J-A	SMT 1KO ±5% 1/16W	R1.R112.R114.R117.R2.R48.R49.R79.	8
37	#N/A	VRMDNVG--103J-A	SMT 10KO ±5% 1/16W	R4.R50.R69.	3
38	#N/A	VRMDNVG--104J-A	SMT 100KO ±5% 1/16W	R148.R66.	2
39	#N/A	VRMDNVG--105J-A	SMT 1MO ±5% 1/16W	R145.R62.	2
40	#N/A	VRMDNVG--201J-A	SMT 2000 ±5% 1/16W	R116.	1

VG510b-1 BOM

Item	ViewSonic P/N	Ref. P/N	Description	Location	Q'ty
41	#N/A	VRMDNVG--202J-A	SMT 2KO ±5% 1/16W	R115.R142.R150.R151.R152.R3.	6
42	#N/A	VRMDNVG--203J-A	SMT 20KO ±5% 1/16W	R113.	1
43	#N/A	VRMDNVG--222J-A	SMT 2.2KO ±5% 1/16W	R32.R37.	2
44	#N/A	VRMDNVG--301J-A	SMT 3000 ±5% 1/16W	R36.	1
45	#N/A	VRMDNVG--302J-A	SMT 3.2KO ±5% 1/16W	R146.	1
46	#N/A	VRMDNVG--330J-A	SMT 330 ±5% 1/16W	R127.R16.R18.R20.R22.R24.R26.	7
47	#N/A	VRMDNVG--331J-A	SMT 3300 ±5% 1/16W	R129.	1
48	#N/A	VRMDNVG--391J-A	SMT 3900 ±5% 1/16W	R89.R90.	2
49	#N/A	VRMDNVG--472J-A	SMT 4.7KO ±5% 1/16W	R10.R11.R118.R119.R120.R126.R138.R139.R41.R42.R43.R58.R61.R65.R72.R73.R77.R78.R83.R84.R86.R88.R9.	23
50	#N/A	VRMDNVG--473J-A	SMT 47KO ±5% 1/16W	R125.R128.R14.R153.	4
51	#N/A	VRMDNVG--512J-A	SMT 5.1KO ±5% 1/16W	R67.	1
52	#N/A	VRMDNVG--681J-A	SMT 680KO ±5% 1/16W	R131.R133.	2
53	#N/A	VRMDNVG--682J-A	SMT 6.8KO ±5% 1/16W	R68.	1
54	#N/A	VRMDNVG--750J-A	SMT 750 ±5% 1/16W	R17.R21.R25.	3
55	#N/A	VRMDNVG--822J-A	SMT 8.2KO ±5% 1/16W	R107.R110.R143.	3
56	#N/A	VCICHN1HH151J-A	C 150PF ±5% 50V	C138.	1
57	#N/A	VCICHN1HH200J-A	C 20PF ±5% 50V	C147.C148.	2
58	#N/A	VCICHN1HH220J-A	C 22PF ±5% 50V	C58.C65.C66.	3
59	E-C-0404-4947	VCICHN1HH330J-A	C 33PF ±5% 50V	C72.C73.	2
60	#N/A	VCICHN1HH331J-A	C 330PF ±5% 50V	C120.	1
61	#N/A	VCIRHN1HG103K-A	C .01UF ±10% 50V	C10.C143.C144.C16.C19.C24.C27.C32.C35.C36.C61.C81.	12
62	#N/A	VCEABN1CX106M-A	C 10UF ±20% 50V	C150.C154.C155.C164.C4.C7.C99.(10UF/16V),	7
63	#N/A	VCEABN1CX107M-A	C 100UF ±20% 50V	C103.C14.C22.C30.C59.C92.(100UF/16V),	6
64	#N/A	VCICHN1CG153J-A	C .015UF ±5% 50V	C139.	1
65	#N/A	VCEABN1CX226M-A	C 22UF ±5% 50V	C108.C141.C17.C25.C33.(22UF/16V),C8.	6
66	#N/A	VCICHN1HG472K-A	C 47PF ±10% 50V	C117.C12.C121.C28.(47UF/16V)	4
67	#N/A	VCEABN1CX476M-A	C 47UF ±20% 50V	C117.C12.C121.C28.(47UF/16V)	4
68	#N/A	VCLFHN1CG105Z-A	C 1UF +80%-20% 50V	C161.C70.	2
69	#N/A	VCLFHN1HG104Z-A	C 0.1UF +80%-20% 50V	C100.C104.C107.C109.C113.C114.C115.C116.C118.C119.C122.C123.C124.C125.C126.C127.C128.C129.C13.C130.C131.C132.C133.C134.C135.C136.C137.C140.C149.C15.C151.C152.C153.C165.C166.C167.C18.C23.C26.C29.C3.C31.C34.C37.C41.C42.C43.C45.C47.C48.C50.C51.C53.C56.C6.C60.C62.C63.C64.C67.C68.C69.C71.C74.C75.C76.C77.C78.C9.C90.C91.C93.C94.C95.C98.	76
70	#N/A	VCLFHN1HG100J-A	C 10PF ±5% 50V	C46.C49.C52.	3
71	#N/A	VCLFCN1CG105Z-A	C 1UF +80%-20% 16V	C156.C157.C168.	3
72	E-C-0404-3973	VCEACU1CH107M-P	C 100PF +100%-0% 50V	C162.C163.	2
73	#N/A	VCIRHN1HG102K-A	C 1000PF ±10% 50V	C158.C159.	2
74	#N/A	VSZGLZ3.9B----A	ZENER DIODE 3.9V	D16.D17.D31.D32.	4
75	#N/A	QJAKS0005D8D--G	PHONE JACK	J3.(PHONE JACK),	1
76	#N/A	VSDDL4001----A	DIODE	D33.	1
77	#N/A	VSTBSH107----A	IC	Q11.	1
78	#N/A	VSISN74LV14A--A	PLL IC	U6.	1
79	E-IC-0401-2898	VSIAP1501-5K5-A	IC	U4.	1
80	#N/A	VSIAN7522----6-	AUDIO CONTROL IC	U9.	1
81	#N/A	VSICEM9433----A	IC	U10.	1
82	#N/A	VSIAPL1117-25-A	IC	U3.	1

VG510s-1 BOM

Item	ViewSonic P/N	Ref. P/N	Description	Location	Q'ty
1	PL-PS-0715-0978	GSTN-2916D8F---	BASE	BASE	1
2	M-CV-0830-2500	GCOVD2552D8F---	BASE FRONT COVER	BASE FRONT COVER	1
3	M-CV-0830-2501	GCOVD2553D8F---	BASE-BACK COVER	BASE-BACK COVER	1
4	M-BK-0805-0032	LANGF2132D8----	BASE METAL	BASE METAL	1
5	M-MS-0808-9382	PCUSG1634D8----	CUSHION-C	CUSHION-C	1
6	M-MS-0808-9383	PCUSG1633D8----	CUSHION-A	CUSHION-A	2
7	M-MS-0808-9384	PCUSG1632D8----	CUSHION-B	CUSHION-B	1
8	M-MS-0808-9112	MHNGM0046D8----	HINGE ASSEMBLY	HINGE ASSEMBLY	1
9	#N/A	XBSSE30P06000--	SCREW	FOR HINGE*4,FOR BASE METAL*4	8
10	#N/A	RSPKCL032D88FG-	SPEAKER	SPEAKER	1
11	#N/A	GCABA2331D8F---	CAB-A	CAB-A	1
12	M-MS-0808-9122	GCABB1852D8F---	CAB-B	CAB-B	1
13	PL-NB-0707-1072	JKNBP2358D8F---	KNOB	KNOB	1
14	M-MS-0808-9115	HDECP1987D8F---	LENS	LENS	1
15	C-BC-0302-0561	GCOVD2551D8F---	BACK COVER	BACK COVER	1
16	M-MS-0808-9123	HBDGE1388D8----	VE-LOGO	VE-LOGO	1
17	M-BK-0805-0033	LANGF2131D8----	VESA METAL	VESA METAL	1
18	M-BK-0805-0034	LANGF2133D8----	D-SUB METAL	D-SUB METAL	1
19	M-MS-0808-9117	PGUM-1124D8----	VESA GUM	VESA GUM	4
20	M-MS-0808-9118	HBDGE1389D8----	VIEWSONIC TEXT LOGO	VIEWSONIC TEXT LOGO	1
21	M-MS-0808-9119	HBDGE1390D8----	LOGO PLATE (BIRDS MARK)	LOGO PLATE (BIRDS MARK)	1
22	#N/A	XEBSB30P14000--	CAB-B&CAB-A	CAB-B&CAB-A	2
23	#N/A	XBPSB40P10JS0--	HINGE SUPPORT WITH MAIN METAL*4	HINGE SUPPORT WITH MAIN METAL*4	4
24	#N/A	LX-BZ1721D8----	SCREW	FOR CAB-B WITH PANEL*4	4
25	#N/A	LX-BZ1726D8----	SCREW	PANEL WITH MAIN METAL	4
26	#N/A	LX-BZ1724D8----	SCREW	MAIN METAL WITH CAB-B	2
27	#N/A	PISLV0231D8----	WASHER	WASHER	4
28	M-MS-0808-5840	LBOSM1069D8----	SCREW BOSS	BOSS FOR D-SUB AND DVI	4
29	M-LB-0813-0911	PISLV0233D8----	ID LABEL	ID LABEL	1
30	M-SCW-0824-6738	XEPSN26P06000--	SCREW	FOR KEY PCB	1
31	#N/A	XBSSE30P06000--	SCREW	FOR D-SUB&CAB-B	2
32	#N/A	XBSSD30P04000--	SCREW	FOR D-SUB METAL	4
33	#N/A	XBMSD30P05000--	SCREW	FOR I/F BOARD*4,INVERTER BOARD*3	7
34	#N/A	PCUSS1500D8----	CUSHION FOR CAB-A	CUSHION FOR CAB-A	1
35	M-BK-0805-0012	LANGF2063D8---A	KENSINGTON BRACKET	KENSINGTON BRACKET	1
36	#N/A	LX-TZ0001D8SC-A	SPEAKER SCREW	SPEAKER SCREW	4
37	#N/A	LX-BZ1717D8----	SCREW	FOR INVERTER*4,I/F SHIELD*6	10
38	#N/A	PCUSG1636D8----	EVA LABEL	EVA FOR VESA METAL	1
39	M-MS-0808-9385	PCUSG1638D8----	CUSHION FOR CAB-B	CUSHION FOR CAB-B	1
40	A-AD-0114-0212	RUNTP5579D8----	AC ADAPTOR (VSC 12V/3.3A)	AC ADAPTOR (VSC 12V/3.3A)	1
41	#N/A	TLAB-5532D8----	MODEL LABEL	MODEL LABEL	1
42	A-UG-0107-0534	TINSE3075D8----	USER'S MANUAL	USER'S MANUAL	1
43	A-CD-VG510B	DDSKC0044D8----	INF FILE DEVICE	INF FILE DEVICE	1
44	A-VC-0101-0271	QCODS1584D8D---	SIGNAL CABLE	SIGNAL CABLE	1
45	A-PC-0106-0180	QACC-1126D8D---	AC POWER CORD	AC POWER CORD	1
46	M-LB-0813-0527	TLABZ3903D8---	UPC LABEL	UPC LABEL	1
47	#N/A	QCODK0030D8D---	AUDIO CABLE	AUDIO CABLE	1
48	A-PC-0106-0181	QACC-1228T8D-F-	POWER CORD (EU 1.8M BLACK)	POWER CORD (EU 1.8M BLACK)	1
49	#N/A	TLAB-5523D8----	S/N LABEL	S/N LABEL	1
50	M-MS-0808-9120	SPAKA6557D8----	PACKING	PACKING	1
51	P-BX-0601-0966	SPAKC3630D8----	CARTON	CARTON	1
52	M-MS-0808-8796	SSAKH1343D8-T--	BAG	BAG	1
53	#N/A	SPAKW1204D8----	PALLET	PALLET	1
54	M-MS-0808-8401	PISL-1245D8----	PROTECT SHEET	PROTECT SHEET	1
55	M-MS-0808-5875	SPAKK1703T8Z--	CONNER PAPER	CONNER PAPER	(4 per pallet)
56	#N/A	SPAKK6322D8----	CONNER PAPER	CONNER PAPER	(2 per pallet)
57	#N/A	SPAKK6357D8----	CONNER PAPER	CONNER PAPER	(4 per pallet)
58	#N/A	SPAKK6364D8----	CONNER PAPER	CONNER PAPER	(2 per pallet)
59	#N/A	ZTAPEY010G080--	TAPE	TAPE W=100MM FOR EPS	80mm
60	#N/A	ZTAPEY030G045--	TAPE	TAPE FOR CAB-A CORNER	160mm

VG510s-1 LCD BOM

Item	ViewSonic P/N	Ref. P/N	Description	Location	Q'ty
1	M-LCD-0826-0180	VVLLQ150X1LGN2-	SHARP PANEL (15")	SHARP PANEL (15")	1
2	B-IF-0222-0049	DPWBN5559T8----	I/F BOARD ASS'Y	I/F BOARD ASS'Y	1
3	#N/A	RUNTP5475T8--D	INVERTER BOARD	INVERTER BOARD	1
4	B-CB-0206-0169	DPWBN5570T8----	OSD-SW BOARD ASS'Y	OSD-SW BOARD ASS'Y	1
5	M-BK-0805-0035	LANGF2130D8----	MAIN METAL	MAIN METAL	1
6	M-BK-0805-0036	PSLDM6569D8----	I/F SHIELD	I/F SHIELD	1
7	M-BK-0805-0037	PSLDM6568D8----	INVERTER SHIELD	INVERTER SHIELD	1
8	#N/A	PISLS1234D8----	INVERTER SHIELD MYLAR	INVERTER SHIELD MYLAR	1
9	#N/A	PISLV0234D8----	FOR INVERTER MYLAR	FOR INVERTER MYLAR	1
10	#N/A	TLABZ4916T8----	HIGH VOLTAGE LABEL	HIGH VOLTAGE LABEL	1
11	A-VC-0101-0358	QCODS1695T8----	LVDS CABLE	LVDS CABLE	1
12	#N/A	QCNSW0905-8028-	INVERTER WIRE	INVERTER WIRE	1
13	M-WR-0828-6016	QCNSW0906-8026-	OSD-SW WIRE	OSD-SW WIRE	1
14	M-WR-0828-6015	QCNSW0904-8038-	SPEAKER WIRE	SPEAKER WIRE	1

**VG510s-1 BOM**

Item	ViewSonic P/N	Ref. P/N	Description	Location	Q'ty
15	#N/A	ZTAPEL025S030--	TAPE	100mm*4(PANEL WITH MAIN METAL),50mm*1(I/F COVER WITH D-SUB METAL),50mm*1(PANEL GROUNDING)	500mm
16	#N/A	PCUSS1264T8----	SPONGE	15mm*10mm*10mm	2
17	#N/A	PCUSS1395D8----	SPONGE	10mm*10mm*10mm	1
18	#N/A	ZTAPEU025K030--	COPPER	COPPER	50mm
19	#N/A	PCUSS1201T8----	SPONGE	20mm*4mm*3mm	1
20	#N/A	PRDAA6380D8----	HEAT SINK FOR U13	HEAT SINK FOR U13	1
21	#N/A	ZTAPEZ026C020--	TAPE	50mm*1(KEY PAD WITH INVERTER CABLE)	50mm
22	#N/A	ZTAPEN018D030U-	CG TAPE FOR LVDS CABLE	CG TAPE FOR LVDS CABLE	35mm

**VG510s-1 Key BOM**

Item	ViewSonic P/N	Ref. P/N	Description	Location	Q'ty
1	#N/A	QPWB-5570T8----	CONTROL BOARD	SW BOARD	1
2	M-SW-0815-0212	QSW-A1129D8----	SWITCH	SW1,SW2,SW3,SW4,SW5,SW6,SW7,SW8	8
3	#N/A	VSP-260YL3YG3-A	LED	SMT LED/4PIN	
4	#N/A	VCNCP0906REJST-	CONNECTOR 6PIN		
5	#N/A	VRMDNVG--103J-A	SMT 10KO ±5% 1/16W	R7	1
6	#N/A	VRMDNVG--000J-A	SMT 00 ±5% 1/16W	L1,L2,L3,L4,L5	5
7	#N/A	VRMDNVG--223J-A	SMT 22KO ±5% 1/16W	R2,R5	2
8	#N/A	VRMDNVG--473J-A	SMT 47KO ±5% 1/16W	R3,R6	2
9	#N/A	VRMDNVG--512J-A	SMT 5.1KO ±5% 1/16W	R1,R4	2
10	#N/A	VCICHN1HH101J-A	C 100pF ±5% 50V	C1,C2,C3	3

**VG510s-1 Main BOM**

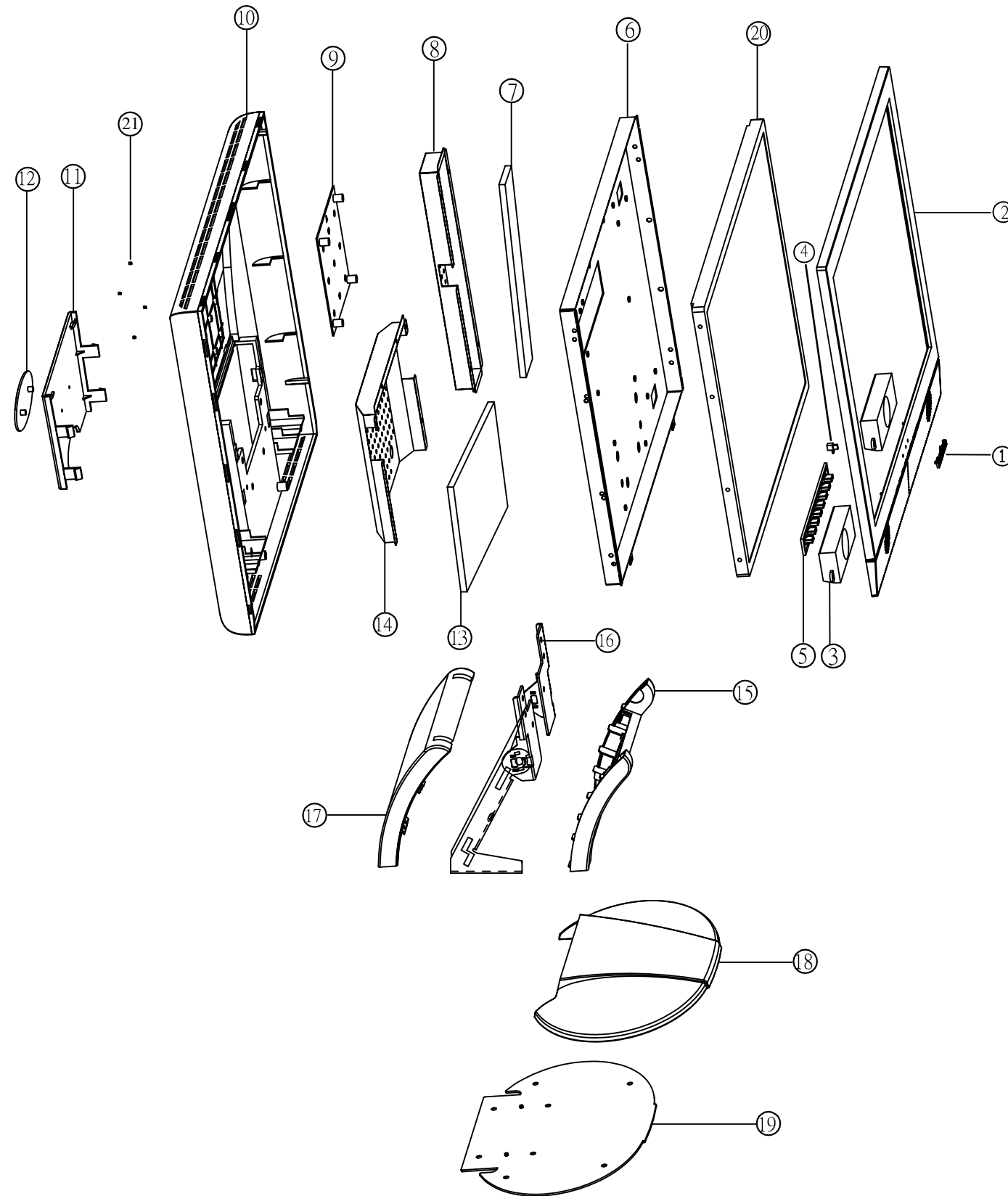
Item	ViewSonic P/N	Ref. P/N	Description	Location	Q'ty
1	#N/A	VSI24LC16B----	EEPROM IC (24LC16)	U8	1
2	E-X-0415-0127	RCRSL1167T8----	OSCILLATOR (12.0MHZ)	X2.(12.0 MHZ),	1
3	E-X-0415-0141	RCRSL1114T8----	OSCILLATOR (22.1184MHZ)	X1.(11.059MHZ)	1
4	E-IC-0401-2137	VSI24C21-----	EEPROM IC (24C21)	U15,U5.	2
5	#N/A	RFIL-5147T8111-	BEAD	L2.	1
6	#N/A	QJAKD1013T8DT--	POWER JACK	JP2.(DC POWER JACK),	1
7	#N/A	VCNCP0904REJST-	CONNECTOR 4PIN	J2.(SPEAKER CON),	1
8	#N/A	VCNCP0905REJST-	CONNECTOR 5PIN	JP1.(INVERTER CON),	1
9	#N/A	VCNCP0906REJST-	CONNECTOR 6PIN	JP6.	1
10	#N/A	QCNC1173T8----	VGA CONNECTOR	J1.(DB-15),	1
11	E-C-0404-3972	VCEACU1CH477M-P	E 470UF ±20% 16V	C1.C11.C160.C38.C39.C40.	6
12	#N/A	PRDA-1252D8----	RADIATOR FOR U3	HEAT SINK FOR U3	1
13	E-IC-0401-2922	VSIMTV312M64--S	MCU IC (MTV312M64)	U7	1
14	#N/A	QPWB-5559T8--1-	I/F BOARD	I/F BOARD	1
15	E-IC-0401-3972	VSIMVXRL-----A	Mstar Scaler IC (MRT VXRL)	U13 (SCALER IC)	1
16	E-IC-0401-2118	VSAIC1084-33-A	Power Regulator 3.3V IC (AIC1084-33)	U1.	1
17	M-MS-0808-8003	QSOI1642T844--	IC SOCKET 44PIN	U7 (44 PIN IC SOCKET)	1
18	#N/A	QCNC1979T8----	CONNECTOR 30PIN	CON5 (30 PIN PLUG)	1
19	#N/A	QCNC1161T8----	CONNECTOR DVI	CN1.(CON-DVI),	1
20	M-MS-0808-8997	QCNC2120T8----	CONNECTOR 20PIN	CN2.( CON 20 PIN),	1
21	#N/A	VST2N3904-----A	TRANSISTOR (NPN)	Q1.Q10.Q12.Q9.	4
22	#N/A	VST2N3906-----A	TRANSISTOR (NPN)	Q3.Q6.Q7.Q8.	4
23	#N/A	VSDSS2-----A	SCHOTTKY DIODE	D1.	1
24	#N/A	VSDAN202UT106-A	DIODE	D19.D2.	2
25	#N/A	VSDBAV99-----A	DIODE (75V/4NS/250mW)	D23.D24.D25.D26.D27.D28.D29.D30.D4.D5.D6.	11
26	E-D-0403-0657	VSZRLZ5.6B----A	ZENER DIODE 5.6V	D10.D11.D18.D20.D21.D22.D3.D7.D8.D9.	10
27	E-D-0403-0531	VSD1N4148-----A	DIODE	D14.D15.	2
28	E-FS-0410-0099	QFS-Z402F-81UAA	FUSE 4A 125V	F1.	1
29	#N/A	RFIL-5231T8600A	BEAD CORE (0805) (100MHZ/600(RDC))	FB11.FB9.(0805),R15.R19.R23.	5
30	#N/A	RFIL-5187T8500A	BEAD CORE (1206) (100MHZ/500(RDC))	FB4.FB5.	2
31	#N/A	RFIL-5233T8700A	BEAD CORE	FB1.FB22.FB26.FB3.FB30.FB34.FB8.(1812),	7
32	#N/A	RNWRB1618T8472A	R 8PIN 4.7Kohm	RP1.RP4.	2
33	#N/A	VRMDNVG--000J-A	SMT 00 ±5% 1/16W	FB12.FB13.FB14.FB15.FB16.FB17.FB18.FB19.FB21.FB23.FB24.FB25.FB27.FB31.FB32.FB33.FB35.FB6.R149.R5.R7.	21
34	#N/A	VRMDNVG--100J-A	SMT 100 ±5% 1/16W	R64.	1
35	#N/A	VRMDNVG--101J-A	SMT 1000 ±5% 1/16W	R111.R12.R122.R123.R13.R137.R140.R141.R147.R29.R30.R31.R34.R35.R46.R47.R51.R54.R63.R71.R74.R75.R76.R80.R81.R82.R85.R87. R91.	29
36	#N/A	VRMDNVG--102J-A	SMT 1KO ±5% 1/16W	R1.R112.R114.R117.R2.R48.R49.R79.	8
37	#N/A	VRMDNVG--103J-A	SMT 10KO ±5% 1/16W	R4.R50.R69.	3
38	#N/A	VRMDNVG--104J-A	SMT 100KO ±5% 1/16W	R148.R66.	2
39	#N/A	VRMDNVG--105J-A	SMT 1MO ±5% 1/16W	R145.R62.	2
40	#N/A	VRMDNVG--201J-A	SMT 2000 ±5% 1/16W	R116.	1
41	#N/A	VRMDNVG--202J-A	SMT 2KO ±5% 1/16W	R115.R142.R150.R151.R152.R3.	6
42	#N/A	VRMDNVG--203J-A	SMT 20KO ±5% 1/16W	R113.	1

§-1 BOM

Item	ViewSonic P/N	Ref. P/N	Description	Location	Q'ty
43	#N/A	VRMDNVG--222J-A	SMT 2.2KO ±5% 1/16W	R32.R37.	2
44	#N/A	VRMDNVG--301J-A	SMT 3000 ±5% 1/16W	R36.	1
45	#N/A	VRMDNVG--302J-A	SMT 3.2KO ±5% 1/16W	R146.	1
46	#N/A	VRMDNVG--330J-A	SMT 330 ±5% 1/16W	R127.R16.R18.R20.R22.R24.R26.	7
47	#N/A	VRMDNVG--331J-A	SMT 3300 ±5% 1/16W	R129.	1
48	#N/A	VRMDNVG--391J-A	SMT 3900 ±5% 1/16W	R89.R90.	2
49	#N/A	VRMDNVG--472J-A	SMT 4.7KO ±5% 1/16W	R10.R11.R118.R119.R120.R126.R138.R139.R41.R42.R43.R58.R61.R65.R72.R73.R77.R78.R83.R84.R86.R88.R9.	23
50	#N/A	VRMDNVG--473J-A	SMT 47KO ±5% 1/16W	R125.R128.R14.R153.	4
51	#N/A	VRMDNVG--512J-A	SMT 5.1KO ±5% 1/16W	R67.	1
52	#N/A	VRMDNVG--681J-A	SMT 680KO ±5% 1/16W	R131.R133.	2
53	#N/A	VRMDNVG--682J-A	SMT 6.8KO ±5% 1/16W	R68.	1
54	#N/A	VRMDNVG--750J-A	SMT 750 ±5% 1/16W	R17.R21.R25.	3
55	#N/A	VRMDNVG--822J-A	SMT 8.2KO ±5% 1/16W	R107.R110.R143.	3
56	#N/A	VCICHN1HH151J-A	C 150PF ±5% 50V	C138.	1
57	#N/A	VCICHN1HH200J-A	C 20PF ±5% 50V	C147.C148.	2
58	#N/A	VCICHN1HH220J-A	C 22PF ±5% 50V	C58.C65.C66.	3
59	E-C-0404-4947	VCICHN1HH330J-A	C 33PF ±5% 50V	C72.C73.	2
60	#N/A	VCICHN1HH331J-A	C 330PF ±5% 50V	C120.	1
61	#N/A	VCIRHN1HG103K-A	C .01UF ±10% 50V	C10.C143.C144.C16.C19.C24.C27.C32.C35.C36.C61.C81.	12
62	#N/A	VCEABN1CX106M-A	C 10UF ±20% 50V	C150.C154.C155.C164.C4.C7.C99.(10UF/16V),	7
63	#N/A	VCEABN1CX107M-A	C 100UF ±20% 50V	C103.C14.C22.C30.C59.C92.(100UF/16V),	6
64	#N/A	VCICHN1CG153J-A	C .015UF ±5% 50V	C139.	1
65	#N/A	VCEABN1CX226M-A	C 22UF ±5% 50V	C108.C141.C17.C25.C33.(22UF/16V),C8.	6
66	#N/A	VCICHN1HG472K-A	C 47PF ±10% 50V	C117.C12.C121.C28.(47UF/16V)	4
67	#N/A	VCEABN1CX476M-A	C 47UF ±20% 50V	C117.C12.C121.C28.(47UF/16V)	4
68	#N/A	VCLFHN1CG105Z-A	C 1UF +80%-20% 50V	C161.C70.	2
69	#N/A	VCLFHN1HG104Z-A	C 0.1UF +80%-20% 50V	C100.C104.C107.C109.C113.C114.C115.C116.C118.C119.C122.C123.C124.C125.C126.C127.C128.C129.C13.C130.C131.C132.C133.C134.C135.C136.C137.C140.C149.C15.C151.C152.C153.C165.C166.C167.C18.C23.C26.C29.C3.C31.C34.C37.C41.C42.C43.C45.C47.C48.C50.C51.C53.C56.C6.C60.C62.C63.C64.C67.C68.C69.C71.C74.C75.C76.C77.C78.C9.C90.C91.C93.C94.C95.C98.	76
70	#N/A	VCLFHN1HG100J-A	C 10PF ±5% 50V	C46.C49.C52.	3
71	#N/A	VCLFCN1CG105Z-A	C 1UF +80%-20% 16V	C156.C157.C168.	3
72	E-C-0404-3973	VCEACU1CH107M-P	C 100PF +100%-0% 50V	C162.C163.	2
73	#N/A	VCIRHN1HG102K-A	C 1000PF ±10% 50V	C158.C159.	2
74	#N/A	VSZGLZ3.9B----A	ZENER DIODE 3.9V	D16.D17.D31.D32.	4
75	#N/A	QJAKS0005D8D--G	PHONE JACK	J3.(PHONE JACK),	1
76	#N/A	VSDDL4001----A	DIODE	D33.	1
77	#N/A	VSTBSH107----A	IC	Q11.	1
78	#N/A	VSISN74LV14A--A	PLL IC	U6.	1
79	E-IC-0401-2898	VSIAP1501-5K5-A	IC	U4.	1
80	#N/A	VSIAN7522----6-	AUDIO CONTROL IC	U9.	1
81	#N/A	VSICEM9433----A	IC	U10.	1
82	#N/A	VSIAPL1117-25-A	IC	U3.	1



## 8. Exploded Diagram And Spare Parts List



**Exploded Parts List VG510s-1**

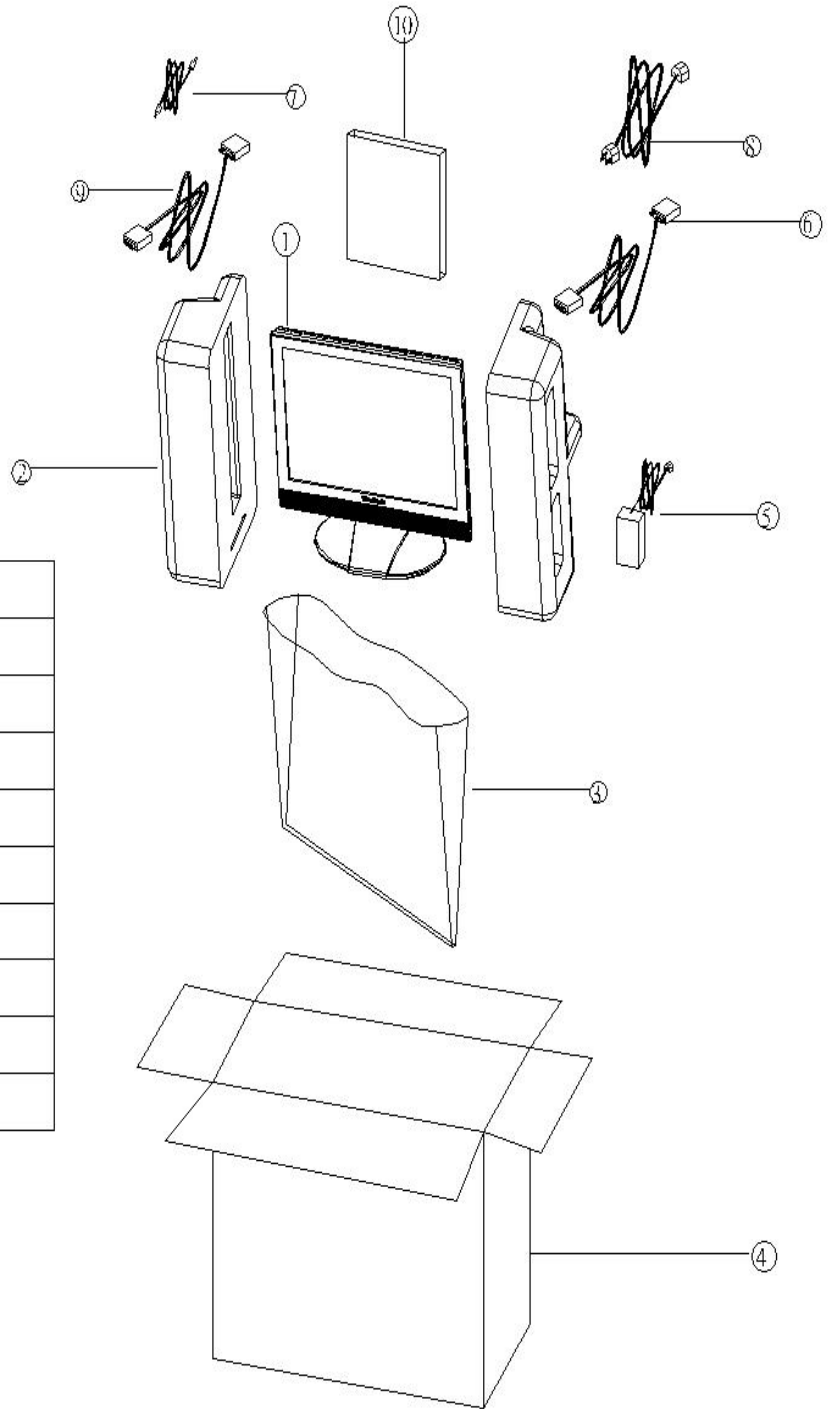
Item	ViewSonic P/N	Ref. P/N	Location	Q'ty
1	M-MS-0808-9118	HBDGE1389D8----	VIEWSONIC TEXT LOGO	1
2	M-MS-0808-9121	GCABA2331D8FT1-	CAB-A	1
3	E-SK-0412-0085	RSPKCL034D88FG-	SPEAKER	1
4	M-MS-0808-9115	HDECP1987D8F---	LENS	1
5	PL-NB-0707-1072	JKNBP2358D8F---	KNOB	1
6	M-BK-0805-0035	LANGF2130D8----	MAIN METAL	1
7	B-SB-0221-0588	RUNTP5475T8---E	INVERTER BOARD	1
8	M-BK-0805-0037	PSLDM6568D8----	INVERTER SHIELD	1
9	M-BK-0805-0033	LANGF2131D8----	VESA METAL	1
10	M-MS-0808-9122	GCABB1852D8F---	CAB-B	1
11	C-BC-0302-0561	GCOVD2551D8F---	BACK COVER	1
12	M-MS-0808-9123	HBDGE1388D8----	VE-LOGO	1
13	B-IF-0222-0049	DPWBN5559T8----	MANI BOARD	1
14	M-BK-0805-0036	PSLDM6569D8----	I/F SHIELD	1
15	M-CV-0830-2500	GCOVD2552D8F---	BASE FRONT COVER	1
16	M-MS-0808-9112	MHNGM0046D8----	HINGE ASSEMBLY	1
17	M-CV-0830-2501	GCOVD2553D8F---	BASE-BACK COVER	1
18	PL-PS-0715-0978	GSTN-2916D8F---	BASE	1
19	M-BK-0805-0032	LANGF2132D8----	BASE METAL	1
20	M-LCD-0826-0180	VVLLQ150X1LGN2-	SHARP PANEL (15")	1
21	M-MS-0808-9117	PGUM-1124D8----	VESA GUM	1

**Exploded Parts List VG510b-1**

Item	ViewSonic P/N	Ref. P/N	Location	Q'ty
1	M-MS-0808-9118	HBDGE1389D8----	VIEWSONIC TEXT LOGO	1
2	M-MS-0808-9113	GCABA2331D8FT1C	CAB-A	1
3	E-SK-0412-0085	RSPKCL034D88FG-	SPEAKER	1
4	M-MS-0808-9115	HDECP1987D8F---	LENS	1
5	PL-NB-0707-1072	JKNBP2358D8F---	KNOB	1
6	M-BK-0805-0035	LANGF2130D8----	MAIN METAL	1
7	B-SB-0221-0588	RUNTP5475T8---E	INVERTER BOARD	1
8	M-BK-0805-0037	PSLDM6568D8----	INVERTER SHIELD	1
9	M-BK-0805-0033	LANGF2131D8----	VESA METAL	1
10	M-MS-0808-9114	GCABB1852D8F--A	CAB-B	1
11	C-BC-0302-0560	GCOVD2551D8F--A	BACK COVER	1
12	M-MS-0808-9116	HBDGE1391D8----	VE-LOGO	1
13	B-IF-0222-0049	DPWBN5559T8----	MANI BOARD	1
14	M-BK-0805-0036	PSLDM6569D8----	I/F SHIELD	1
15	M-CV-0830-2498	GCOVD2552D8F--A	BASE FRONT COVER	1
16	M-MS-0808-9112	MHNGM0046D8----	HINGE ASSEMBLY	1
17	M-CV-0830-2499	GCOVD2553D8F--A	BASE-BACK COVER	1
18	PL-PS-0715-0977	GSTN-2916D8F--A	BASE	1
19	M-BK-0805-0032	LANGF2132D8----	BASE METAL	1
20	M-LCD-0826-0180	VVLLQ150X1LGN2-	SHARP PANEL (15")	1
21	M-MS-0808-9117	PGUM-1124D8----	VESA GUM	1

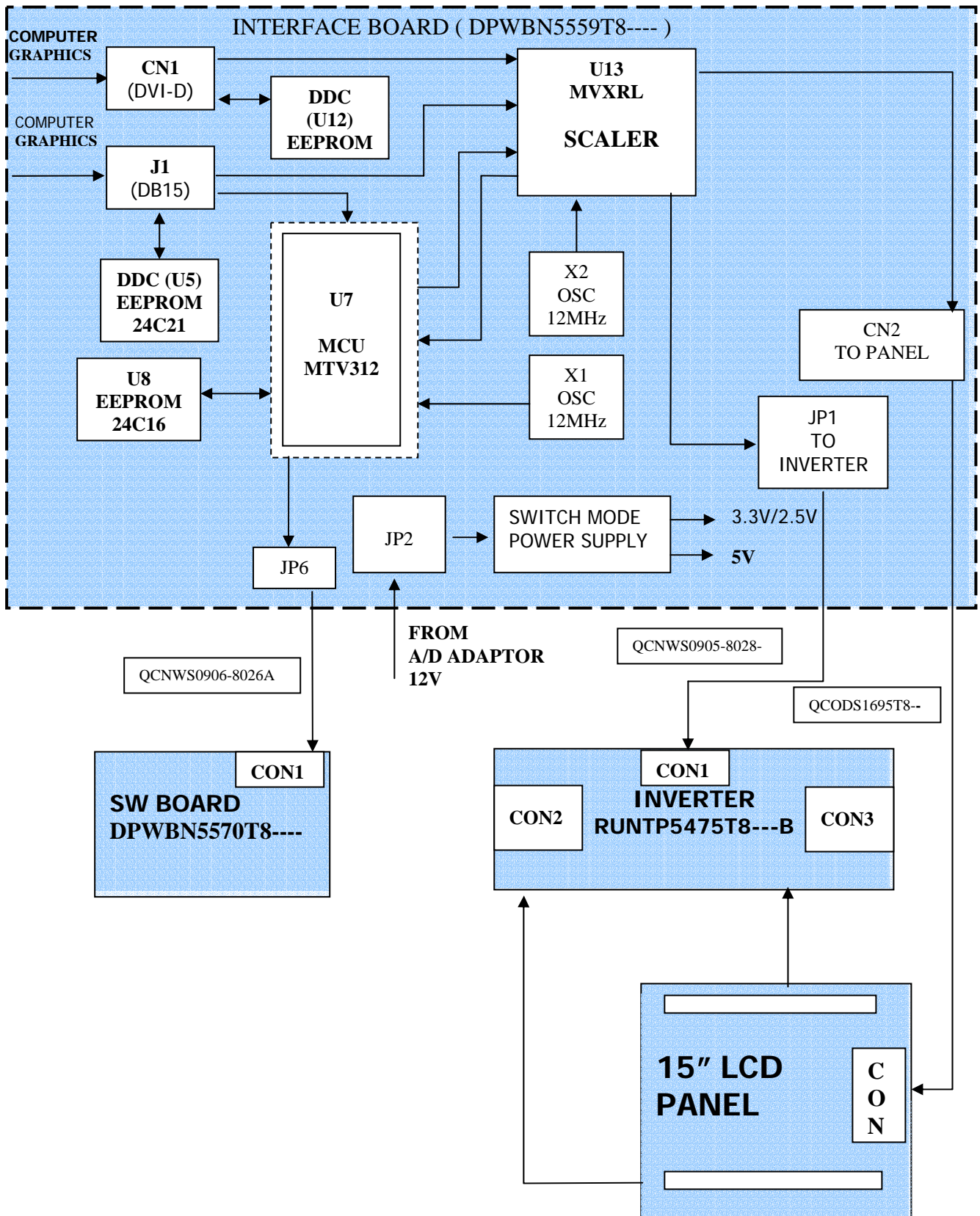
ViewSonic Corporation	
Model	VG510b/s
Title	Exploded Diagram
Date	Rev:

1	LCD 15"
2	PACKING
3	BAG
4	CARTON
5	AC ADAPTOR
6	DVI CABLE
7	AUDIO CABLE
8	POWER CORD
9	D-SUB CABLE
10	MENU

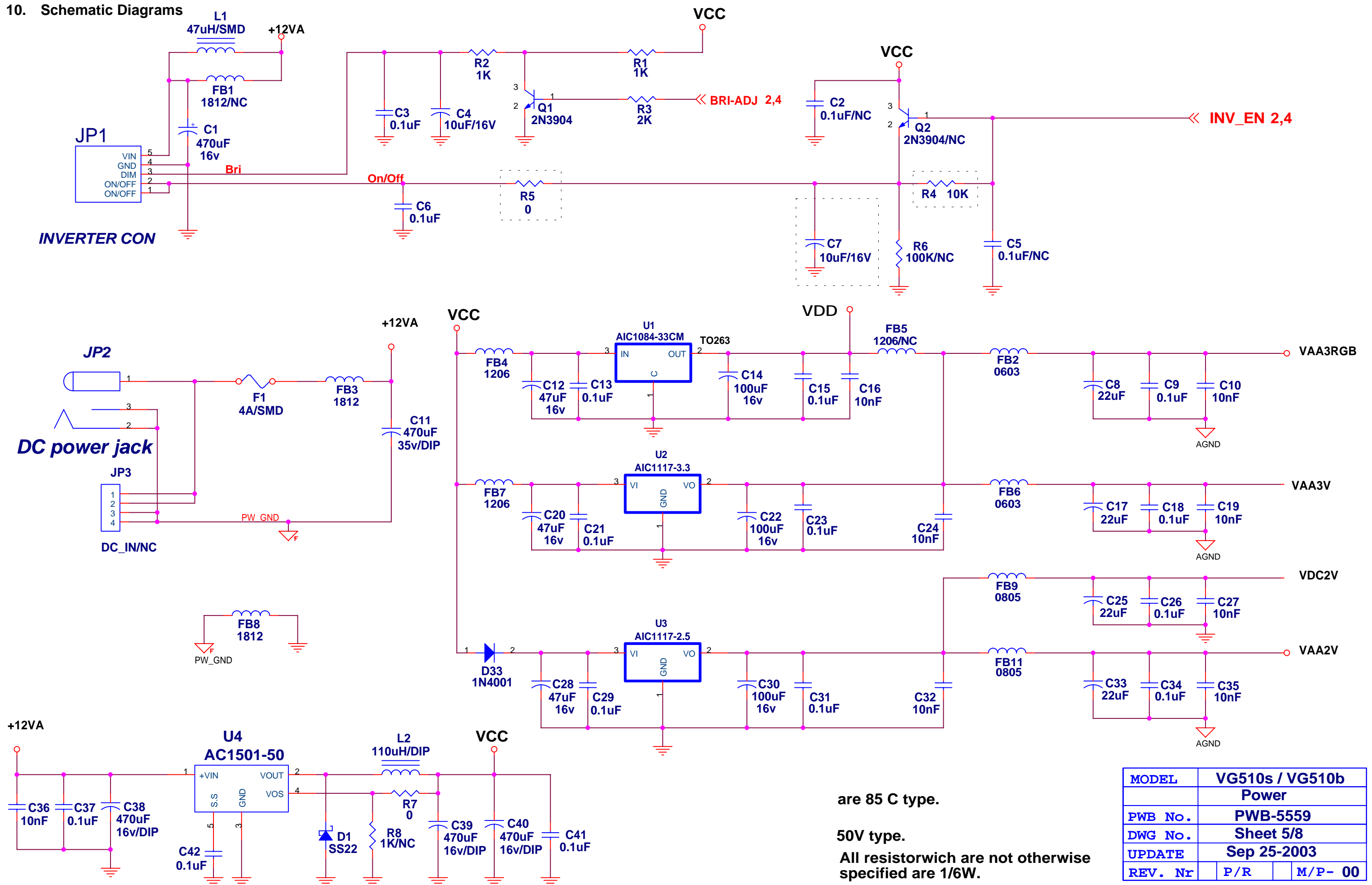


## 9. Block Diagram

### VG510 Block Diagram

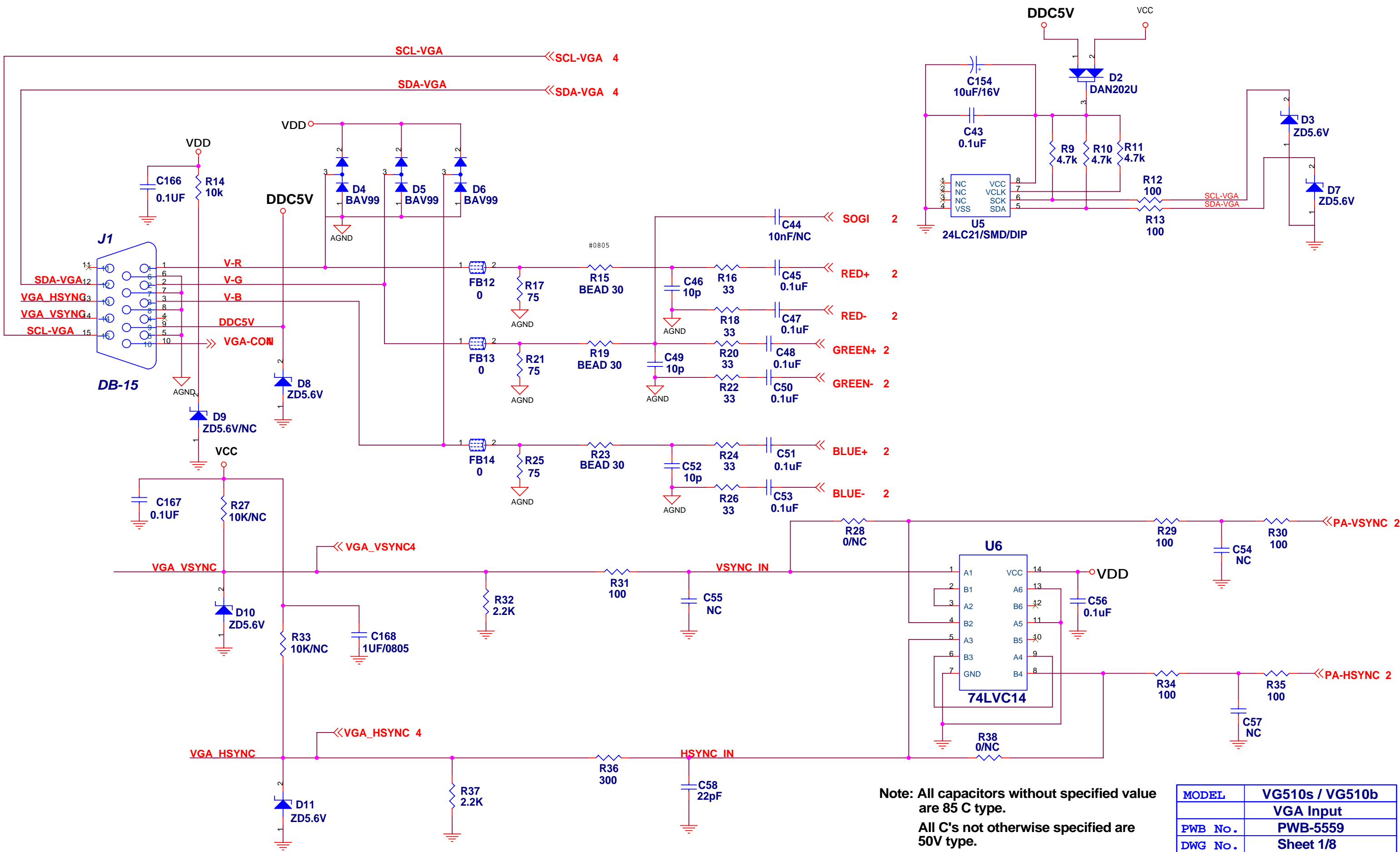


10. Schematic Diagrams



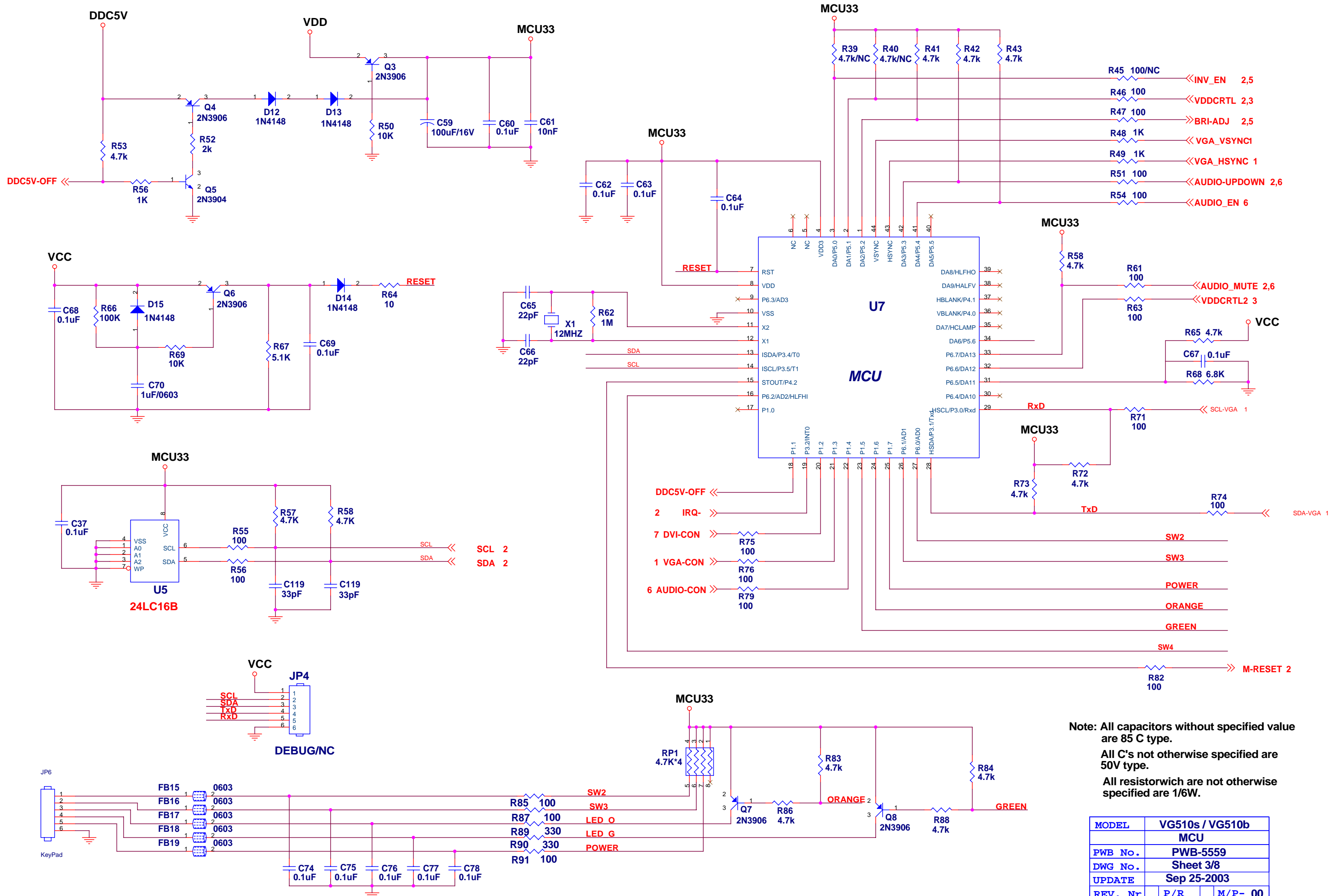
are 85 C type.  
50V type.  
All resistorwich are not otherwise specified are 1/6W.

MODEL	VG510s / VG510b		
	Power		
PWB No.	PWB-5559		
DWG No.	Sheet 5/8		
UPDATE	Sep 25-2003		
REV. Nr	P/R	M/P	00



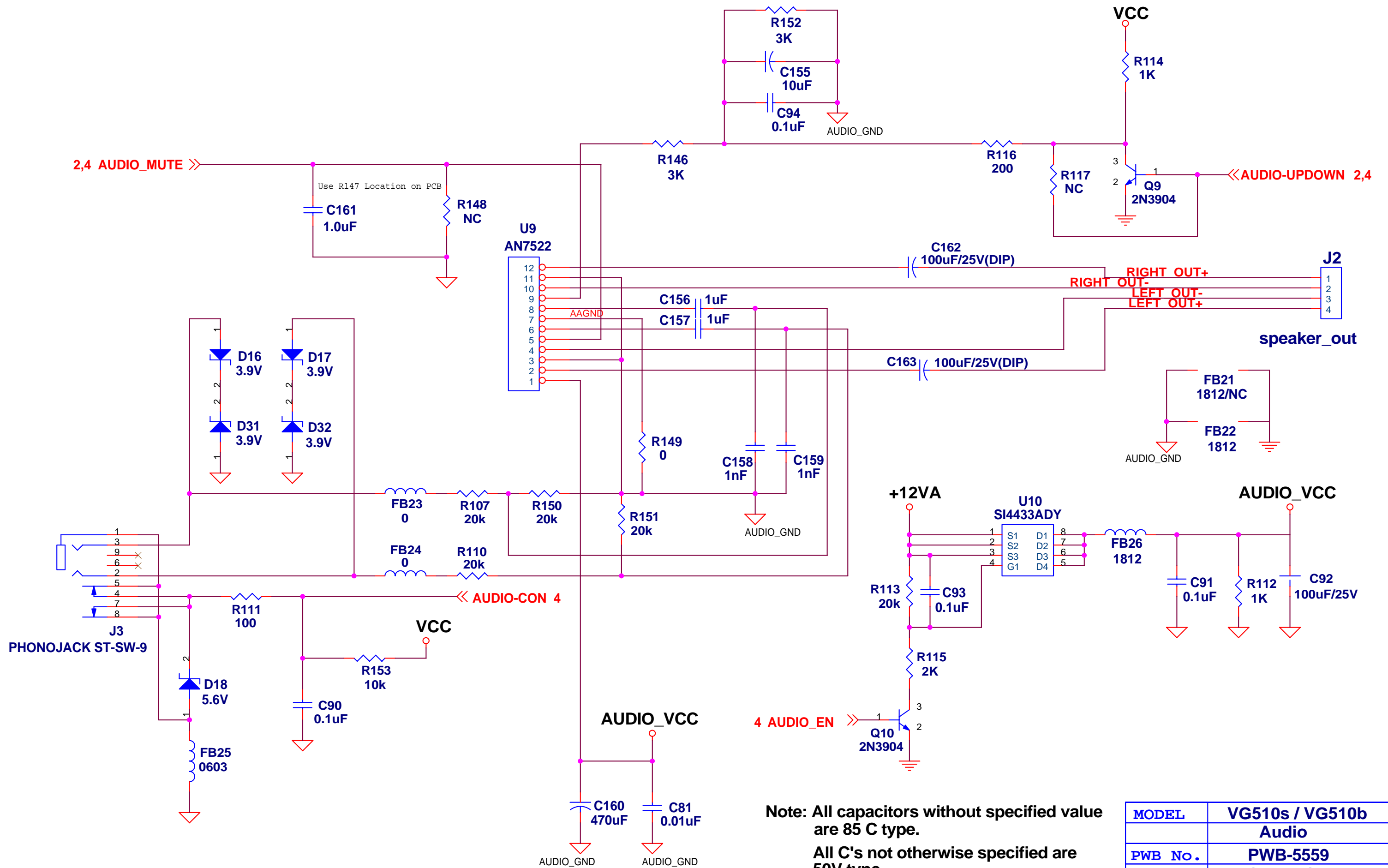
Note: All capacitors without specified value are 85 C type.  
 All C's not otherwise specified are 50V type.  
 All resistorwich are not otherwise specified are 1/6W.

MODEL	VG510s / VG510b	
	VGA Input	
PWB No.	PWB-5559	
DWG No.	Sheet 1/8	
UPDATE	Sep 25-2003	
REV. Nr	P/R	M/P- 00



Note: All capacitors without specified value are 85 C type.  
 All C's not otherwise specified are 50V type.  
 All resistor which are not otherwise specified are 1/6W.

MODEL	VG510s / VG510b
	MCU
PWB No.	PWB-5559
DWG No.	Sheet 3/8
UPDATE	Sep 25-2003
REV. Nr	P/R M/P- 00



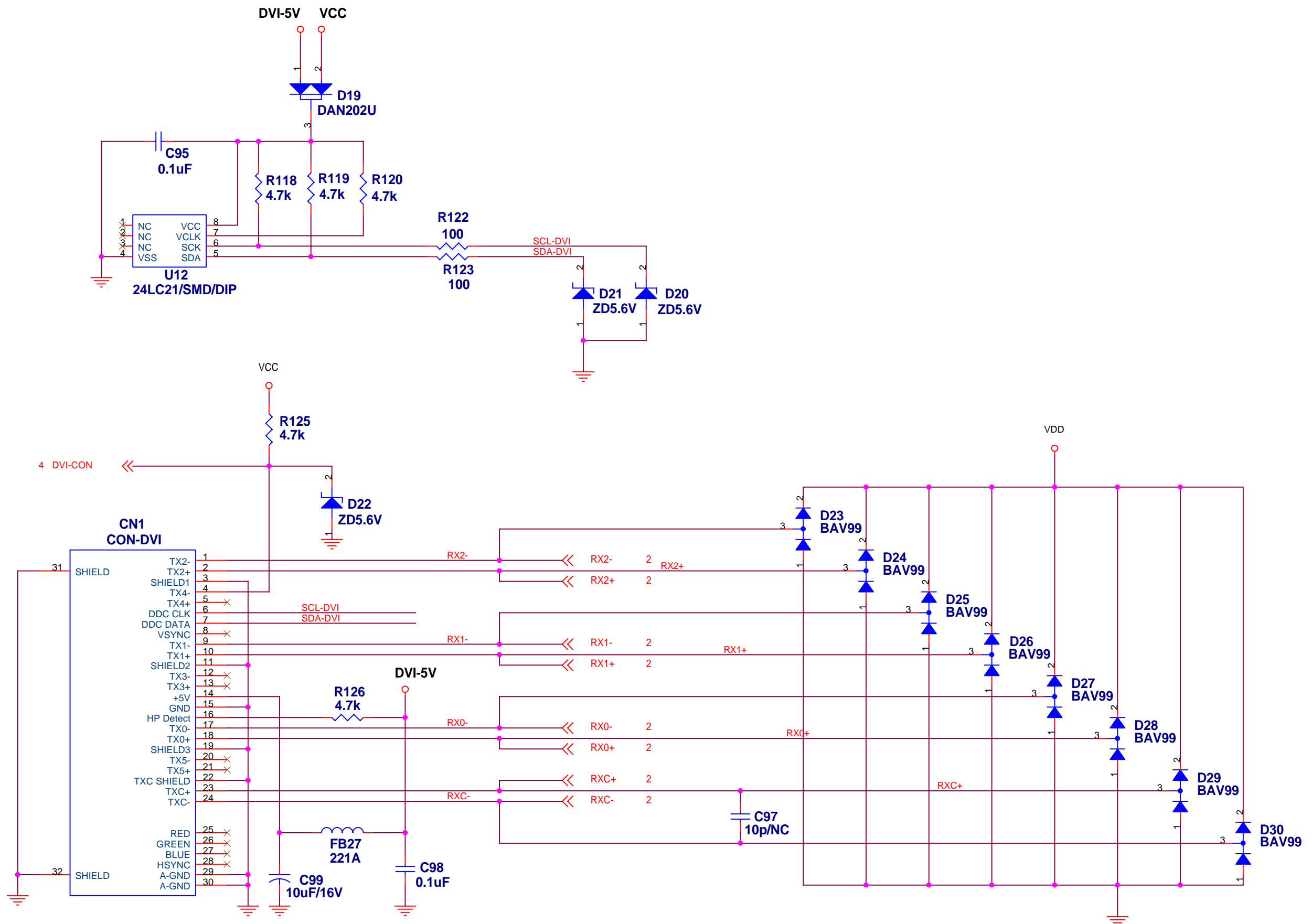
Note: All capacitors without specified value are 85 C type.

All C's not otherwise specified are 50V type.

specified are 1/6W.

MODEL	VG510s / VG510b Audio		
PWB No.	PWB-5559		
DWG No.	Sheet 6/8		
UPDATE	Sep 25-2003		
REV. Nr	P/R	M/P	00

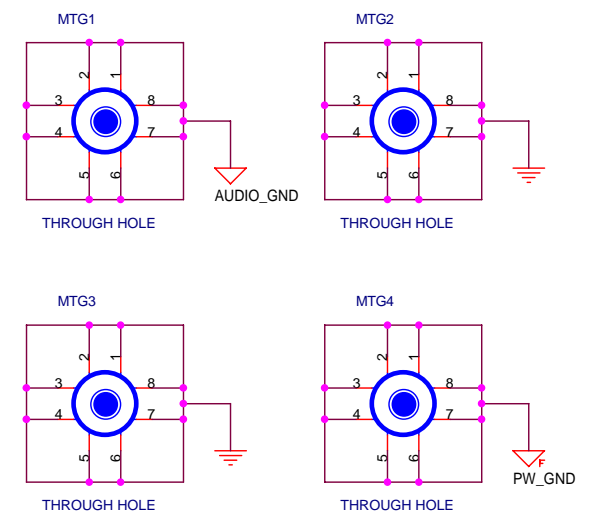
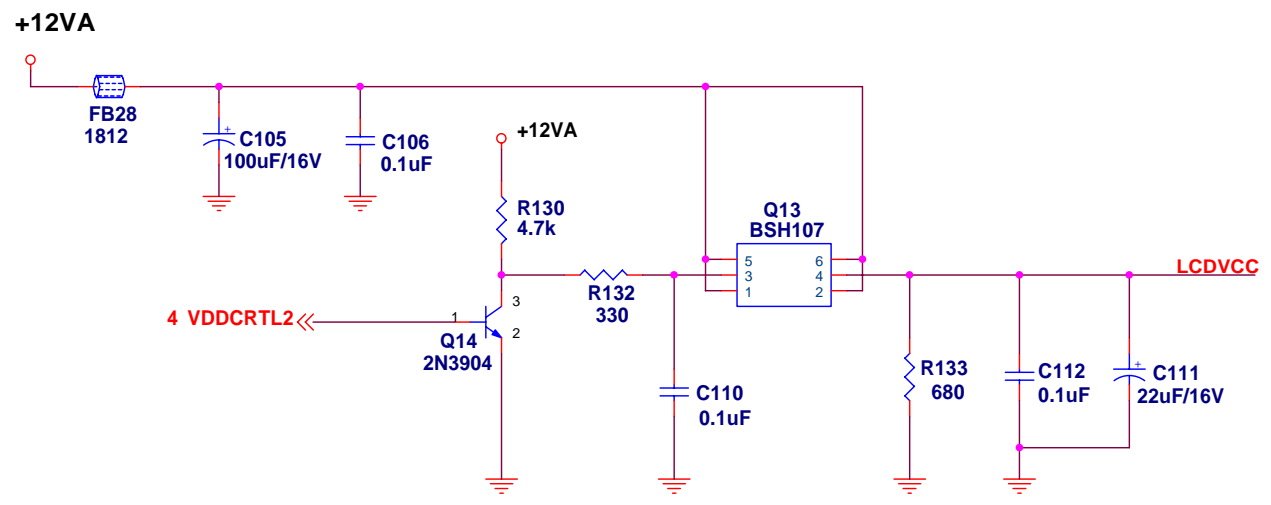
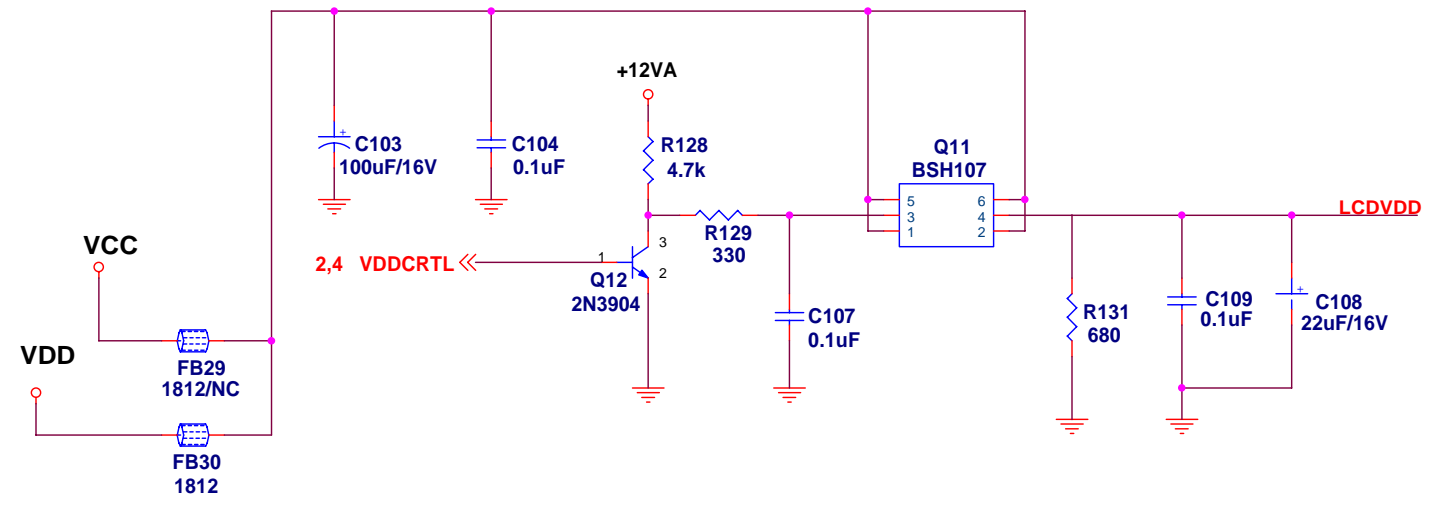
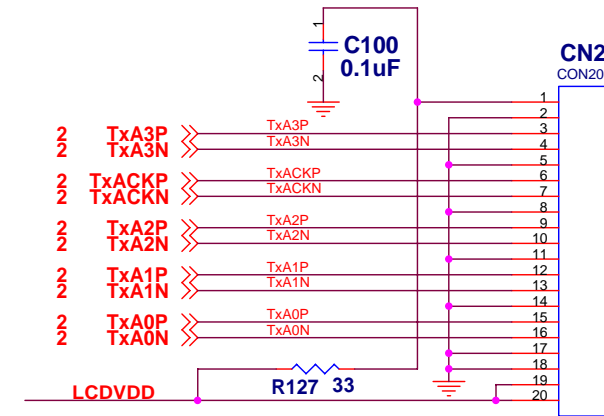
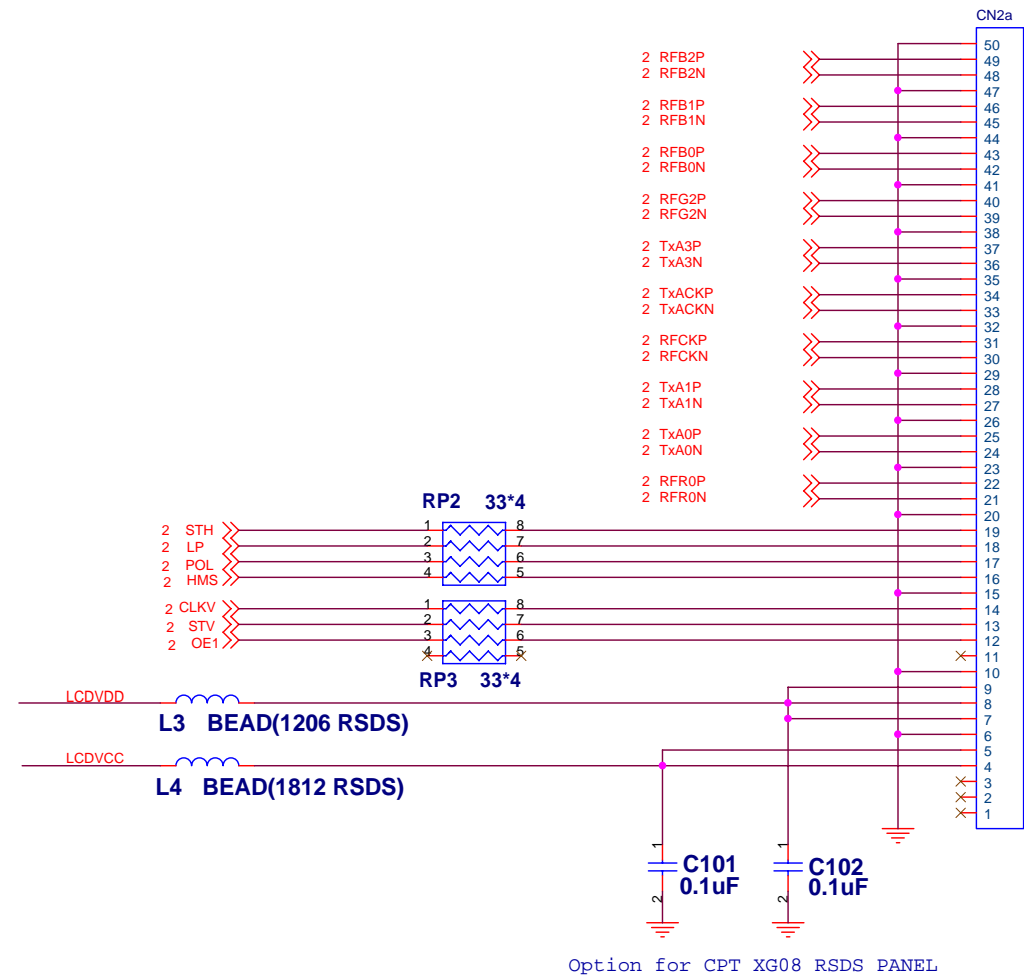




**Note:**  
 are 85 C type.  
 All C's not otherwise specified are 50V type.  
 All resistor with are not otherwise specified are 1/6W.

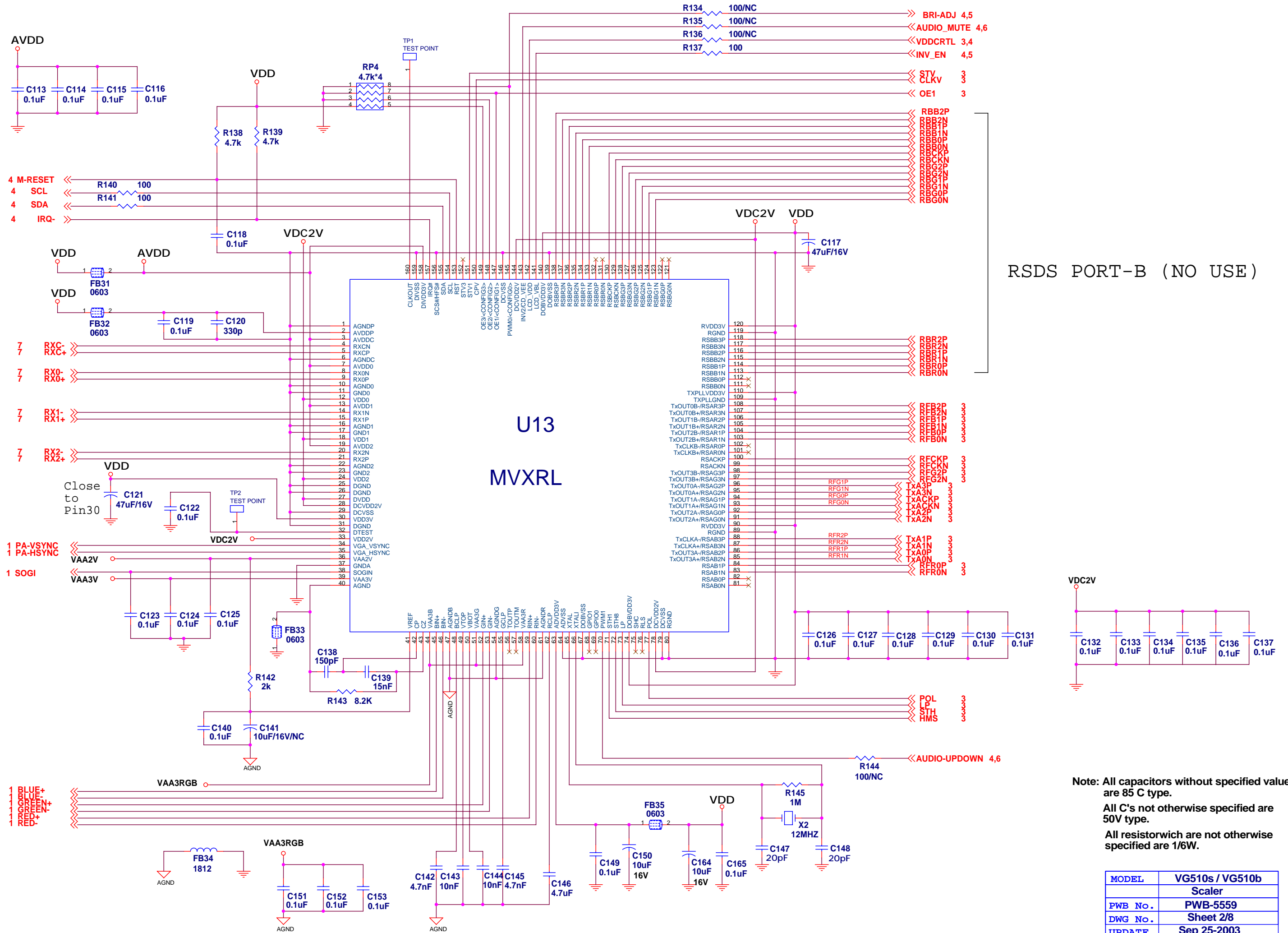
MODEL	VG510s / VG510b	
	DVI Input	
PWB No.	PWB-5559	
DWG No.	Sheet 7/8	
UPDATE	Sep 25-2003	
REV. Nr	P/R	M/P- 00





Note: All capacitors without specified value are 85 C type.  
 All C's not otherwise specified are 50V type.  
 All resistorwch are not otherwise specified are 1/6W.

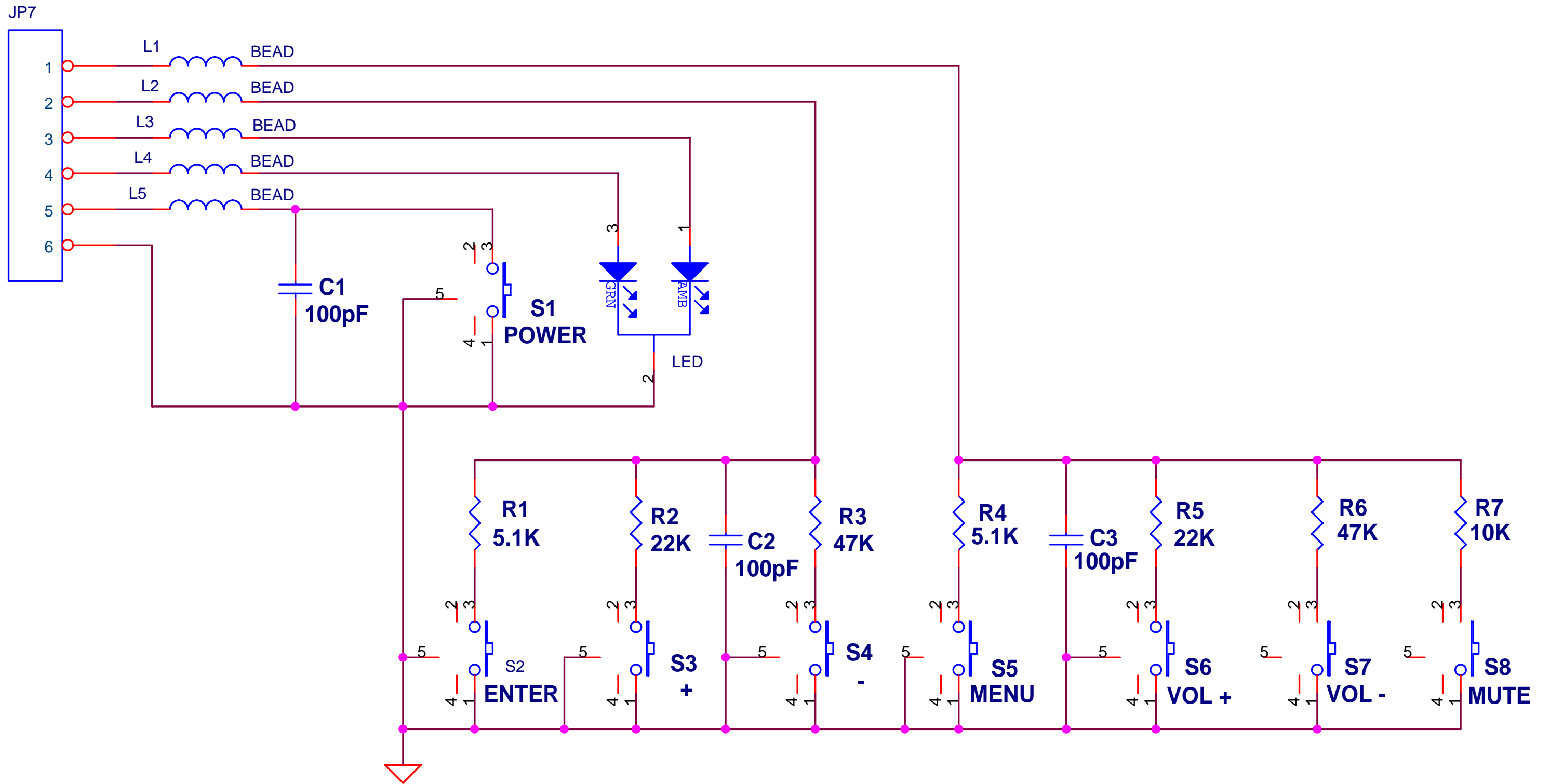
MODEL	VG510s / VG510b	
	Output Connector	
PWB No .	PWB-5559	
DWG No .	Sheet 4/8	
UPDATE	Sep 25-2003	
REV. Nr	P/R	M/P- 00



RSBS PORT-B (NO USE)

Note: All capacitors without specified value are 85 C type.  
 All C's not otherwise specified are 50V type.  
 All resistor with are not otherwise specified are 1/6W.

MODEL	VG510s / VG510b	
	Scaler	
PWB No.	PWB-5559	
DWG No.	Sheet 2/8	
UPDATE	Sep 25-2003	
REV. Nr	P/R	M/P- 00

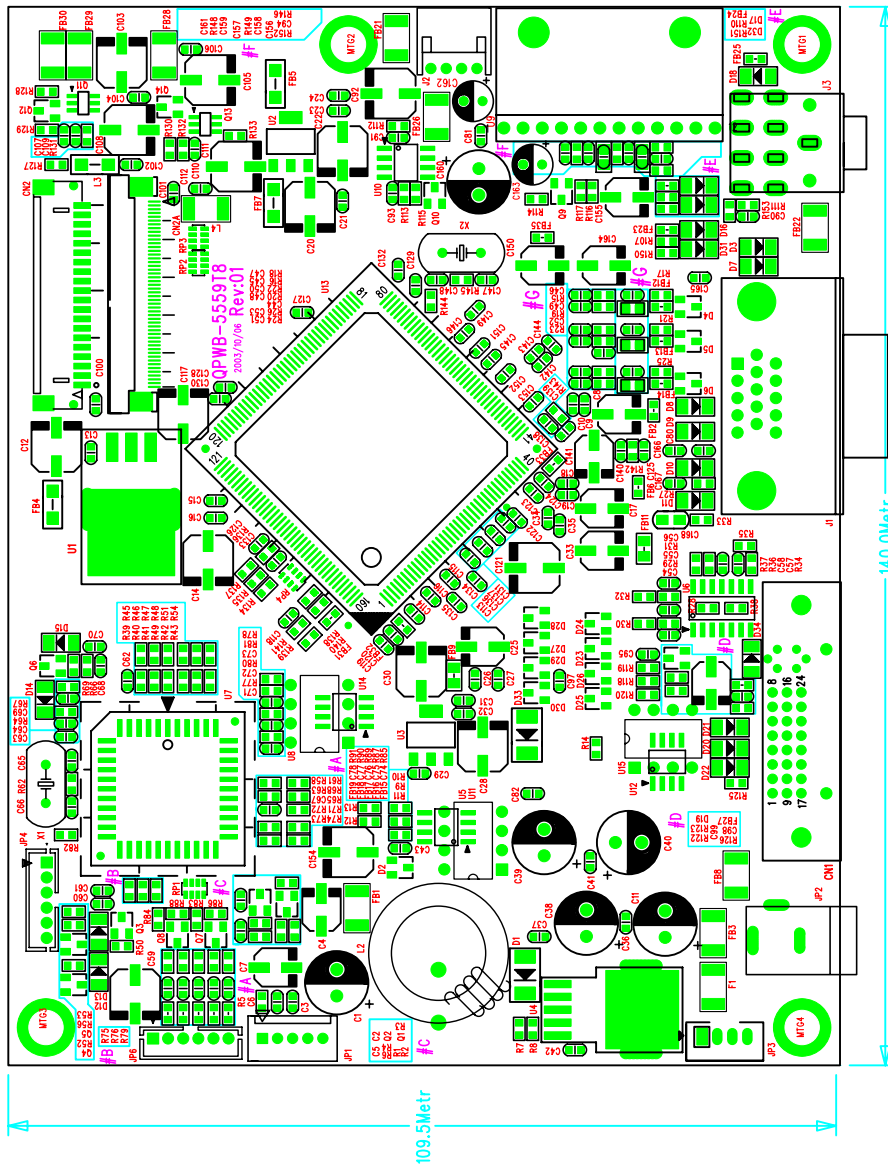


**Note: All capacitors without specified value are 85 C type.  
 All C's not otherwise specified are 50V type.  
 All resistorwich are not otherwise specified are 1/6W.**

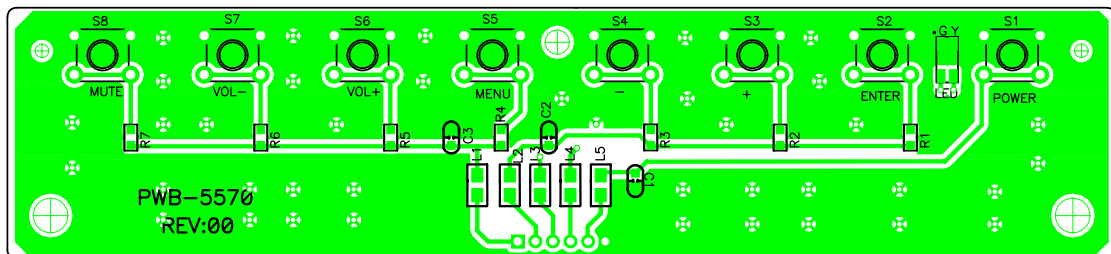
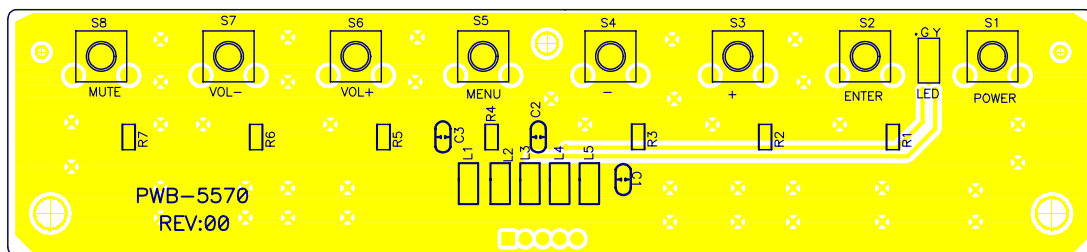
<b>MODEL</b>	<b>VG510s / VG510b</b>		
	<b>Key Board</b>		
<b>PWB No.</b>	<b>PWB-5570</b>		
<b>DWG No.</b>	<b>Sheet 8/8</b>		
<b>UPDATE</b>	<b>Sep 25-2003</b>		
<b>REV. Nr</b>	<b>P/R</b>		<b>M/P- 00</b>

# 11. PCB Layout Diagrams

## Main Board



## Control Board



## *\*Reader's Response\**

Dear Readers:

Thank you in advance for your feedback on our Service Manual, which allows continuous improvement of our products. We would appreciate your completion of the Assessment Matrix below, for return to ViewSonic Corporation.

### Assessment

A. What do you think about the content after reading **VG510b/s** Service Manual?

<i>Unit</i>	<i>Excellent</i>	<i>Good</i>	<i>Fair</i>	<i>Bad</i>
<b>1. Precautions And Safety Notices</b>				
<b>2. Specification</b>				
<b>3. Front Panel Function Control Description</b>				
<b>4. Circuit Description</b>				
<b>5. Adjusting Procedure</b>				
<b>6. Trouble Shooting Flow Chart</b>				
<b>7. Recommended Spare Parts List</b>				
<b>8. Exploded Diagram and Spare Parts List</b>				
<b>9. Block Diagram</b>				
<b>10. Schematic Diagrams</b>				
<b>11. PCB Layout Diagrams</b>				

B. Are you satisfied with the **VG510b/s** service manual?

<i>Item</i>	<i>Excellent</i>	<i>Good</i>	<i>Fair</i>	<i>Bad</i>
1. Service Manual Content				
2. Service Manual Layout				
3. The form and listing				

C. Do you have any other opinion or suggestion about this service manual?

### Reader's basic data:

Name:		Title:	
Company:			
Add.:			
Tel:		Fax:	
E-mail:			

After completing this form, please return it to ViewSonic Quality Assurance in the USA at facsimile 1-909-839-7943. You may also e-mail any suggestions to the Director, Quality Systems & Processes (marc.maupin@viewsonic.com)