



visiontek®

VisionTek THEATER™ 550 PRO
User Guide



ATI THEATER 550
PRO

Copyright © 2004, ATI Technologies Inc. All rights reserved.

ATI and ATI product and product feature names are trademarks and/or registered trademarks of ATI Technologies Inc. All other company and/or product names are trademarks and/or registered trademarks of their respective owners. Features, performance and specifications are subject to change without notice. Product may not be exactly as shown in diagrams.

Copyright © 2005, VisionTek All rights reserved.

VisionTek and XTASY product and product feature names are trademarks and/or registered trademarks of VisionTek. All other company and/or product names are trademarks and/or registered trademarks of their respective owners. Features, performance and specifications are subject to change without notice. Product may not be exactly as shown in diagrams.

Reproduction of this manual, or parts thereof, in any form, without the express written permission of VisionTek is strictly prohibited.

Microsoft® is a registered trademark of Microsoft Corporation.

Windows® is a registered trademark of Microsoft Corporation.

Windows® XP Media Center Edition® is a registered trademark of Microsoft Corporation.

SnapStream® is a registered trademark of SnapStream Corporation.

Beyond Media® and Beyond TV® are registered trademarks of SnapStream Corporation.

Disclaimer

While every precaution has been taken in the preparation of this document, VisionTek and ATI Technologies Inc. assume no liability with respect to the operation or use of ATI based hardware, software or other products and documentation described herein, for any act or omission of VisionTek and ATI concerning such products or this documentation, for any interruption of service, loss or interruption of business, loss of anticipatory profits, or for punitive, incidental or consequential damages in connection with the furnishing, performance, or use of the VisionTek or ATI hardware, software, or other products and documentation provided herein.

VisionTek and ATI Technologies Inc. reserves the right to make changes without further notice to a product or system described herein to improve reliability, function or design. With respect to ATI based products which this document relates, VisionTek and ATI disclaim all express or implied warranties regarding such products, including but not limited to, the implied warranties of merchantability, fitness for a particular purpose, and non-infringement.

Product Notices

Dolby* Laboratories, Inc.

Manufactured under license from Dolby Laboratories. Confidential Unpublished Works.

© 1992-1997 Dolby Laboratories, Inc. All rights reserved.

Macrovision

Apparatus Claims of U.S. Patent Nos. 4,631,603, 4,577,216, 4,819,098, and 4,907,093 licensed for limited viewing uses only.

This product incorporates copyright protection technology that is protected by method claims of certain U.S. patents and other intellectual property rights owned by Macrovision Corporation and other rights owners. Use of this copyright protection technology must be authorized by Macrovision Corporation, and is intended for home and other limited viewing uses only unless otherwise authorized by Macrovision Corporation. Reverse engineering or disassembly is prohibited.

IMPORTANT SAFETY INSTRUCTIONS

- **Read Instructions** - All the safety and operating instructions should be read before the product is operated.
- **Retain Instructions** - The safety and operating instructions should be retained for future reference.
- **Heed Warnings** - All warnings on the product and the operating instructions should be adhered to.
- **Compatibility** - This option card is for use only with IBM AT or compatible UL Listed personal computers that have Installation Instructions detailing user installation of card cage accessories.
- **Grounding** - For continued protection against risk of electric shock and fire, this accessory should be installed only in products equipped with a three-wire grounding plug, a plug having a third (grounding) pin. This plug will only fit into a grounding-type power outlet. This is a safety feature. If you are unable to insert the plug into the outlet, contact your electrician to replace the obsolete outlet. Do not defeat the safety purpose of the grounding-type plug.
- **Secure Attachment** - All card securement pins shall be completely tightened as to provide continuous bonding between the option card and the PC chassis.
- **Outdoor Antenna Grounding** - Since an outdoor antenna or cable system is connected to the product, be sure that the antenna or cable system is grounded so as to provide some protection against voltage surges and built-up static charges. Article 810 of the National Electrical Code, ANSI/NFPA 70, provides information with regard to proper grounding of the mast and supporting structure, grounding of the lead-in wire to the antenna discharge unit, size of grounding conductors, location of antenna-discharge unit, connection of grounding electrodes, and requirements for the grounding electrode.
- **Lightning** - For added protection for this product during a lightning storm, or when it is left unattended and unused for long periods of time, unplug it from the wall outlet, and disconnect the antenna or cable system. This will prevent damage to the product due to lightning and power-line surges.
- **Power Lines** - An outside antenna system should not be located in the vicinity of overhead power lines or other light or power circuits, or where it can fall into such power lines or circuits.
- **Antenna Installation** - When installing an outside antenna system, extreme care should be taken to keep from touching such power lines or circuits, as contact with them may be fatal.
- **Note to CATV System Installer** - This reminder is provided to call the CATV systems installer's attention to Section 820-40 of the NEC, which provides guidelines for proper grounding and, in particular, specifies that the cable ground shall be connected to the grounding system of the building, as close to the point of cable entry as practical.



Table of Contents

Chapter 1

Getting Started -----

System Requirements

Chapter 2

Installing Hardware -----

Quick Installation

Detailed Installation

Installing your THEATER™ 550 PRO-based TV tuner card in Windows XP Home, Pro, and XP Media Center Edition

Connecting Display Devices

Chapter 3

Detailed Hardware Installation – Windows XP Media Center Edition version only-----

Chapter 4

Installing Software Drivers and Setup - Windows XP Version Featuring SnapStream “Subscriber Edition” software-----

Section A: Installing ATI TV Tuner Drivers (WDM drivers)

Section B: Installing SnapStream Beyond TV Software

Section C: Beyond TV Setup Wizard

Section D: Beyond TV Help

Section E: Installing SnapStream Beyond Media Software

Section F: Beyond Media Setup Wizard

Section G: Beyond Media Help

Chapter 5

Installing Software Drivers and Setup - Windows Media Center Edition version with remote control-----

Software driver installation Theater 550 Pro XP Media Center Edition Version only

Setup Wizard for Windows® XP Media Center Edition® 2005

Using Windows® XP Media Center Edition® 2005

Chapter 6

Capturing Video-----

Windows Movie Maker

Chapter 7

Reference -----

Troubleshooting

Getting Additional Resources

Product Registration

Customer Care/Support

Warranty Service

Compliance Information

Important !!!!!!! This manual covers two different VisionTek Theater 550 Pro product solutions:
 (1) The VisionTek XTASY Theater 550 Pro Media Center Edition version with remote control
 (2) VisionTek Theater 550 Pro Windows XP version without remote control.

CHAPTER 1: Getting Started

Congratulations on your purchase of the VisionTek Theater 550 Pro TV Tuner card/PVR solution. Your VisionTek THEATER™ 550 PRO TV tuner card is an advanced, analog TV tuner card that represents a vast improvement in both video and audio quality over previous PC TV tuner products. The THEATER™ 550 PRO TV tuner card uses hardware MPEG encoding and digital audio.

The THEATER™ 550 PRO TV tuner card provides the following features:

- NTSC analog video decoding with motion-adaptive 3D comb filtering (depending on region).
- Worldwide, analog, stereo audio decoding with digital output to the PC.
- FM radio.
- MPEG-1 Layer II, 2-channel audio encoding.
- High quality MPEG-2 video encoder.
- Hardware noise reduction.

Watch television on your computer! You can receive up to 125 cable television channels and 70 antenna channels in smooth, full-motion video, and view them on the whole screen or in a window.

System Requirements

Hardware	<ul style="list-style-type: none"> • Intel® Pentium® 4 or Celeron®, AMD Athlon® or Sempron® (or compatible). • Sound card and speakers. • 128 MB of system memory; 256 MB or more is recommended for best performance. • Motherboard with a free 3.3V PCI slot. • CD-ROM drive (for installation software). • A DirectX 9 supported graphics card is recommended for optimal display output quality. • Cable TV signal or amplified antenna. ▪ Internet connection to retrieve electronic programming guide
Operating System	<ul style="list-style-type: none"> • Windows® XP Media Center Edition® 2005 • Windows® XP (Professional or Home, Service Pack 2)
Decoder	<ul style="list-style-type: none"> • You must have an MPEG decoder (DVD or media player) already on your system in order to play back MPEG video captured by the THEATER™ 550 PRO-based TV tuner card.
Monitor	<ul style="list-style-type: none"> • High-resolution MultiSync or multi-frequency monitors or any other type of VGA monitor. • Digital flat-panel (DFP) displays or digital CRT display.

CHAPTER 2: Installing Hardware

This chapter will guide you through the physical installation of your THEATER™ 550 PRO-based TV tuner card.

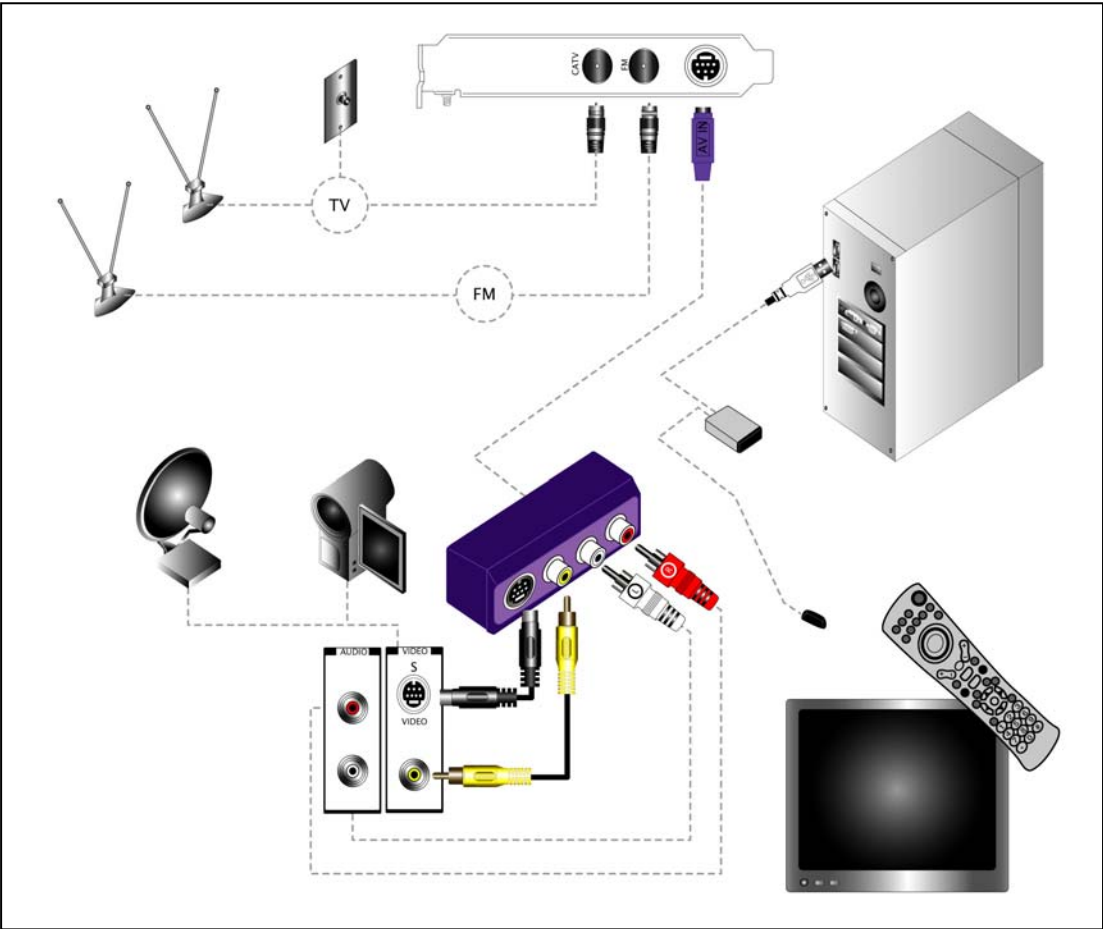
Quick Installation

Experienced users and system administrators can follow these brief instructions for installing the THEATER™ 550 PRO-based TV tuner card in the shortest possible time.

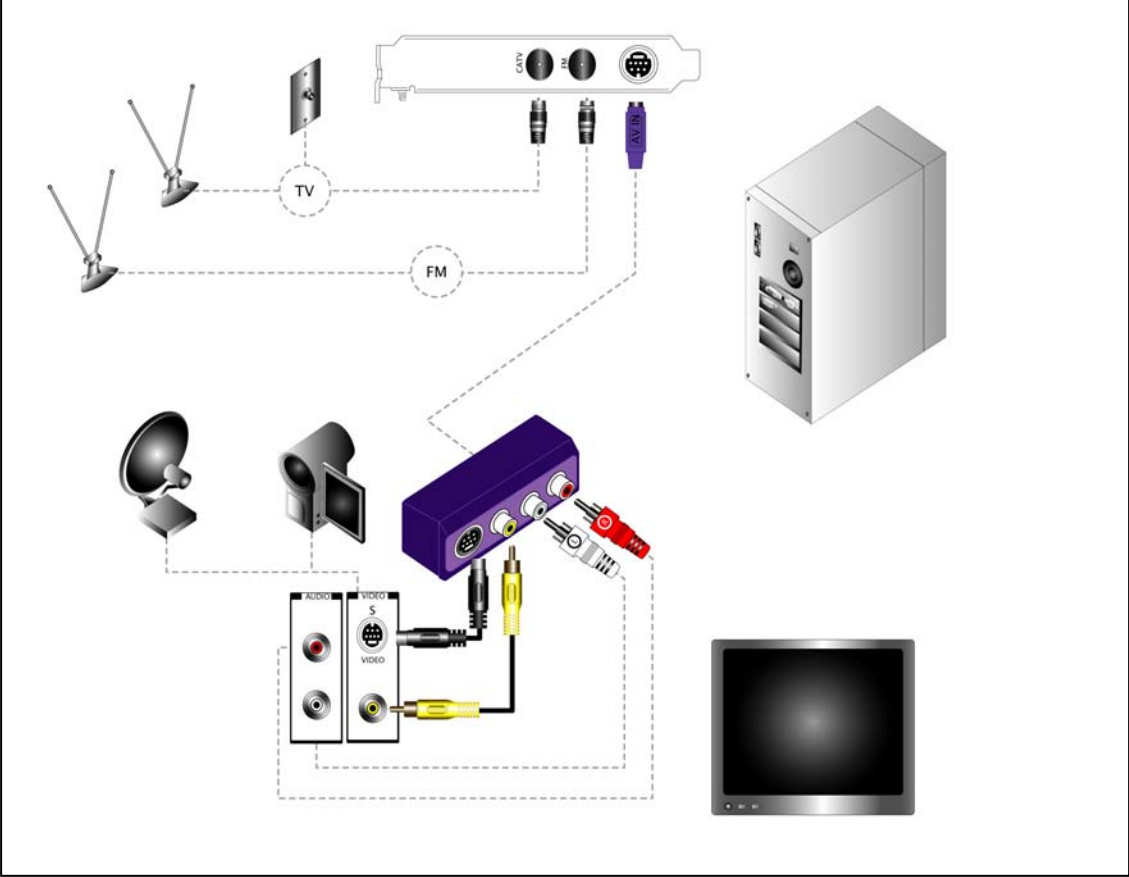
To perform a quick installation

- 1 Uninstall the drivers and software for any previous TV Tuner products if you have not already done so.
- 2 Shut down and disconnect the power from your computer system.
- 3 Remove any previously installed TV Tuner product.
- 4 Install your new THEATER™ 550 PRO TV tuner card.
- 5 Reassemble and connect your computer system.
- 6 Install the THEATER™ 550 PRO-based TV tuner card drivers and configuration software from the VisionTek Installation CD-ROM by doing one of the following:
 - Run through the automatic **SETUP** utility; or
 - **Start > Run > X:\SETUP.EXE** (where **X** is the drive letter of your CD-ROM drive).
- 7 Windows XP Media Center Edition version card – run setup wizard by pressing green button on remote control.
or
- 7 Windows XP Snapstream “Subscriber Edition” version card – install SnapStream software.

Quick install diagram of the Media Center Edition sku with remote control.

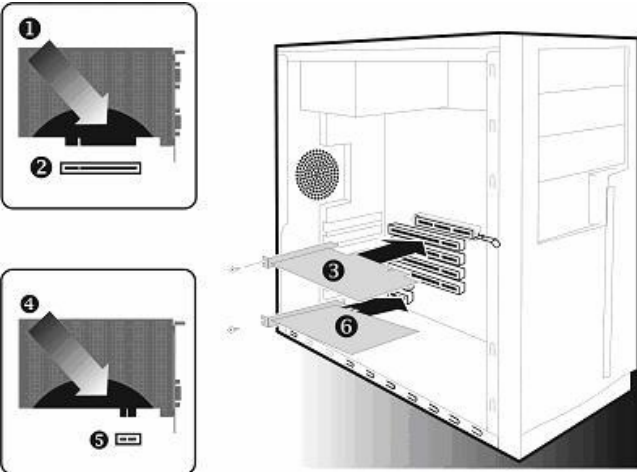


Quick install diagram of the Windows XP sku featuring SnapStream software.



Detailed Installation

The following instructions will take you step by step through the installation of your new THEATER™ 550 PRO-based TV tuner card.



Installation Diagram

- 1** THEATER™ 550 PRO-based TV tuner card with PCI Connector

- 2** PCI Connection on Motherboard

- 3** Insertion Point for PCI Card

Installing your THEATER™ 550 PRO-based TV tuner card in Windows XP Home, Pro, and Media Center Edition

- 1 Turn off the computer, monitor, and other peripheral devices.
- 2 Disconnect all cables from the back of your computer with the exception of your power cord.



WARNING - Wait approximately 20 seconds after unplugging the power cord before disconnecting a peripheral or removing a component from the motherboard to avoid possible damage to the motherboard.

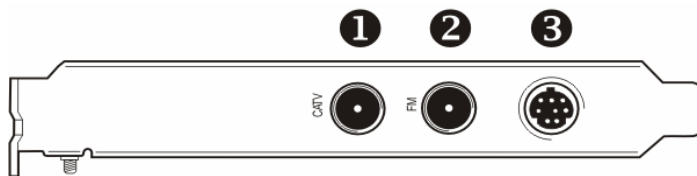
- 3 Remove the computer cover. If necessary, consult your computer's manual for help in removing the cover.



WARNING - Remember to discharge your body's static electricity by touching the power supply or the metal surface of the computer chassis before touching the motherboard or components.

- 4 Locate an available PCI slot and, if necessary, remove the metal back-plate cover.
- 5 Align your THEATER™ 550 PRO TV tuner card with the appropriate slot, and then press it in firmly until the card is fully seated.
- 6 Screw in or fasten the THEATER™ 550 PRO TV tuner card securely. Replace your computer cover.
- 7 Reconnect any cables you have disconnected, and then plug in the computer's power cord.
- 8 Attach a TV antenna or cable cord to the **TV** connector on your THEATER™ 550 PRO TV tuner card.
- 9 Attach an FM antenna to the **FM** connector on your THEATER™ 550 PRO-based TV tuner card. If your cable service provides an FM signal, you can use a splitter to connect the cable to the FM and TV connectors on your card.
- 10 Plug the purple input dongle that came with your THEATER™ 550 PRO-based TV tuner card into the AV IN connection.
- 11 Attach your S-video source and/or composite source to the proper input on the purple input dongle.
- 12 Turn on the monitor, and then your computer. If you have properly installed your card, operating system messages will appear once the boot procedure is finished. Proceed with the installation of drivers and software.

Connecting Devices



THEATER™ 550 PRO-based TV tuner card Baseplate

- | | |
|---|-------------------------------------|
| 1 | Cable TV Coaxial Connection |
| 2 | FM Radio Coaxial Connection |
| 3 | AV IN Connection (to Purple Dongle) |

IF USING SNAPSTREAM SOFTWARE PLEASE SKIP TO CHAPTER 4 FOR ASSISTANCE INSTALLING SOFTWARE

What is SnapStream Beyond TV?

SnapStream Beyond TV is a software program that allows you to **view TV** and **record TV** on your PC. Think of it as an alternative to TiVo™ or Microsoft XP Media Center Edition.

Important!!!! Media Center Edition users:

If you purchased the VisionTek Xtasy Theater 550 Pro Media Center Edition (w/remote control) and you have a digital cable box or satellite receiver we recommend you use Media Center Edition for viewing and recording TV programs. This is because the remote control that comes with the product may not be able to interface with a digital cable box or satellite receiver when using Snapstream Beyond TV. The remote control supplied with the product has limited functionality with Snapstream programs.

What is Snapstream Beyond Media?

Beyond Media is a perfect addition to your Beyond TV home theater PC. Beyond Media is a **music player**, and a **photo browser**--an **all-in-one media player** that will take your entertainment PC to the next level.

CHAPTER 3: Installing Hardware - Media Center Edition version (with remote control) only

Remote control receiver unit for Media Center Edition version

Instructions: Attach the USB cable (included with product) into USB receptacle on receiver unit. Next, insert the other end of the USB cable into an available USB port on your computer.



IR Blaster for Media Center Edition 2005 version

To have Media Center change channels on a set top box such as a cable box or satellite receiver, you have to connect Media Center to the box or receiver by using the IR blaster. This will allow you to access channels beyond channel 125 if using digital cable or satellite.

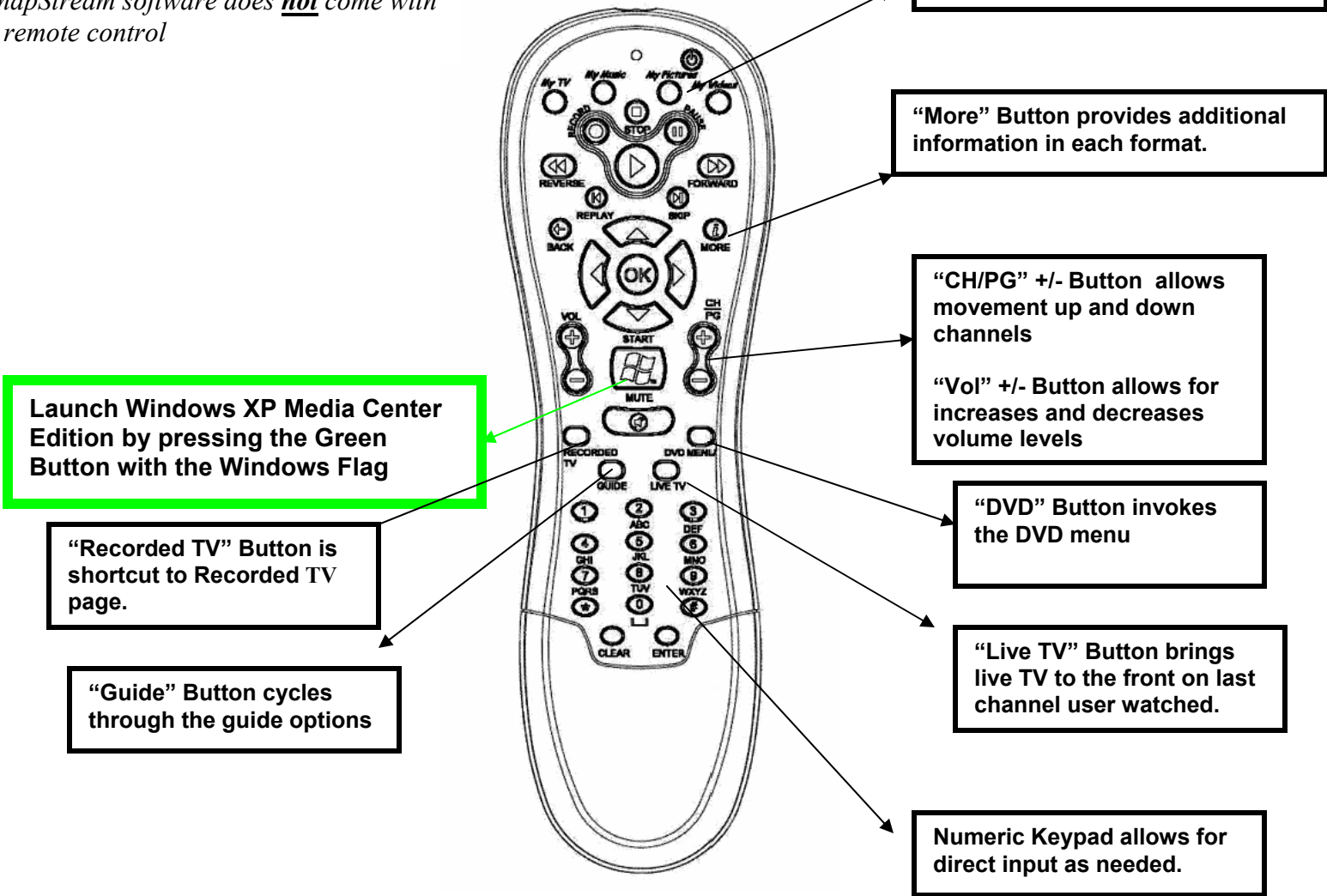
Note: The IR blaster bundled with this product is currently not supported by Snapstream Beyond TV software.

Instructions: Please insert the male end of the plug into the either one of the receptacles on the receiver unit (shown above). We recommend placing the receptor end of the IR blaster on top of your cable or satellite receiver set top box.



Diagram for remote control used on XP Media Center Edition version.

*Note: The Windows XP version featuring SnapStream software does **not** come with a remote control*



CHAPTER 4: Installing Software - Windows XP Version Featuring SnapStream “Subscriber Edition” software

Section A: Installing ATI TV Tuner Drivers (WDM drivers)

This chapter will guide you through the installation of the TV Tuner software drivers for your VisionTek XTASY THEATER™ 550 PRO TV tuner card.



1 Insert the installation CD that came with the product. Windows XP autorun feature should automatically load the installation menu shown above

or

1 From the Windows® **Desktop**, click **My Computer** > **CD or DVD drive (VisionTek logo will be present)**

2 Click **Install** VisionTek Theater 550 Pro drivers

3 Follow the onscreen instructions and reboot as prompted

Note: If video is not displayed, you may need to update your graphics card drivers

Section B: Installing SnapStream Beyond TV Software

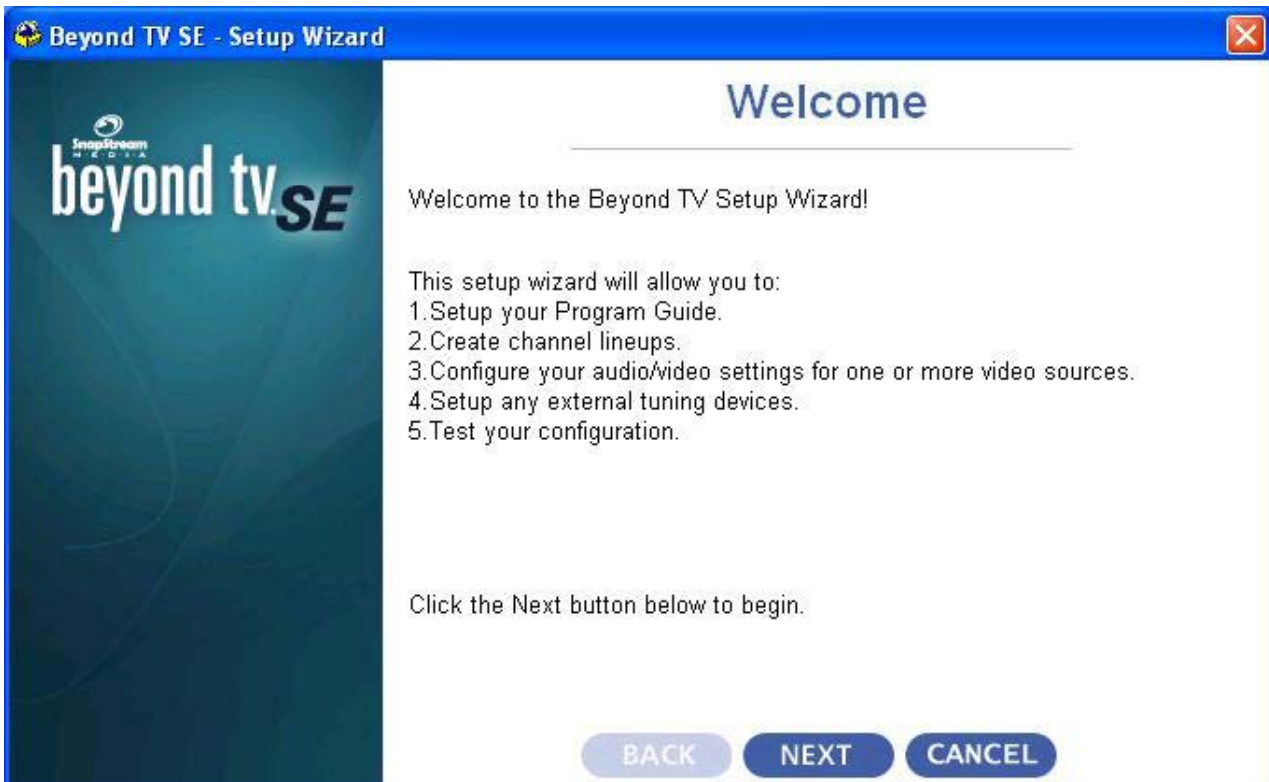
This chapter will guide you through the installation of your SnapStream software



- 1 Insert (or remove and reinsert) the installation CD that came with the product. Windows XP autorun feature should automatically load the installation menu shown above
or
- 1 From the Windows® **Desktop**, click **My Computer** > **CD or DVD drive (VisionTek logo will be present)**
- 2 Click Install SnapStream Beyond TV software button.

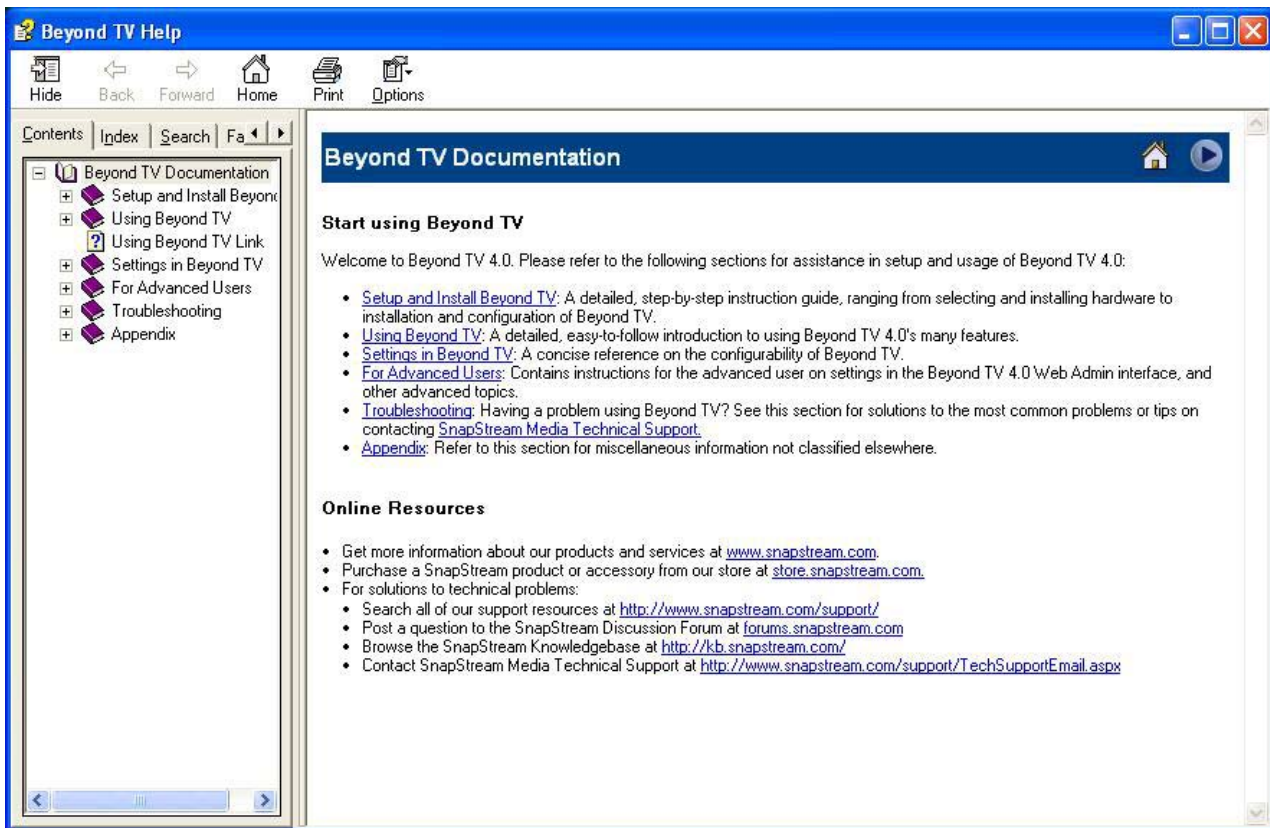
Section C - SnapStream Beyond TV Setup Wizard

- From the Windows® Start Menu, choose **Programs > SnapStream > Beyond TV> Beyond TV Setup Wizard**



Section D - SnapStream Beyond TV Help

- From the Windows® Start Menu, choose **Programs > SnapStream > Beyond TV > Beyond TV Help**



Section E: Installing SnapStream Beyond Media Software (optional)

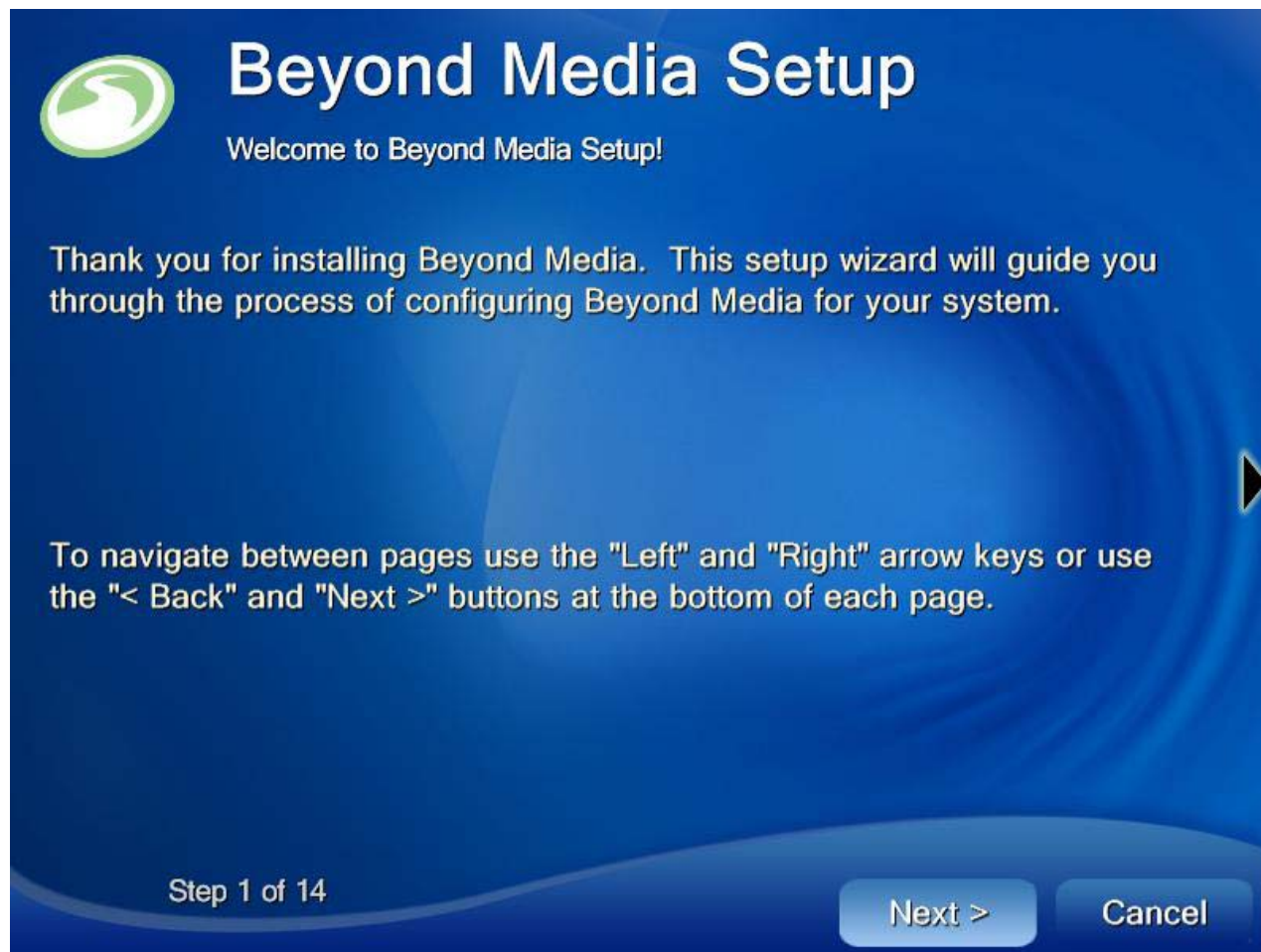
This chapter will guide you through the installation of your SnapStream software



- 1 Insert (or remove and reinsert) the installation CD that came with the product. Windows XP autorun feature should automatically load the installation menu shown above
or
- 1 From the Windows® **Desktop**, click **My Computer > CD or DVD drive (VisionTek logo will be present)**
- 2 Click Install Optional SnapStream Beyond Media software button.

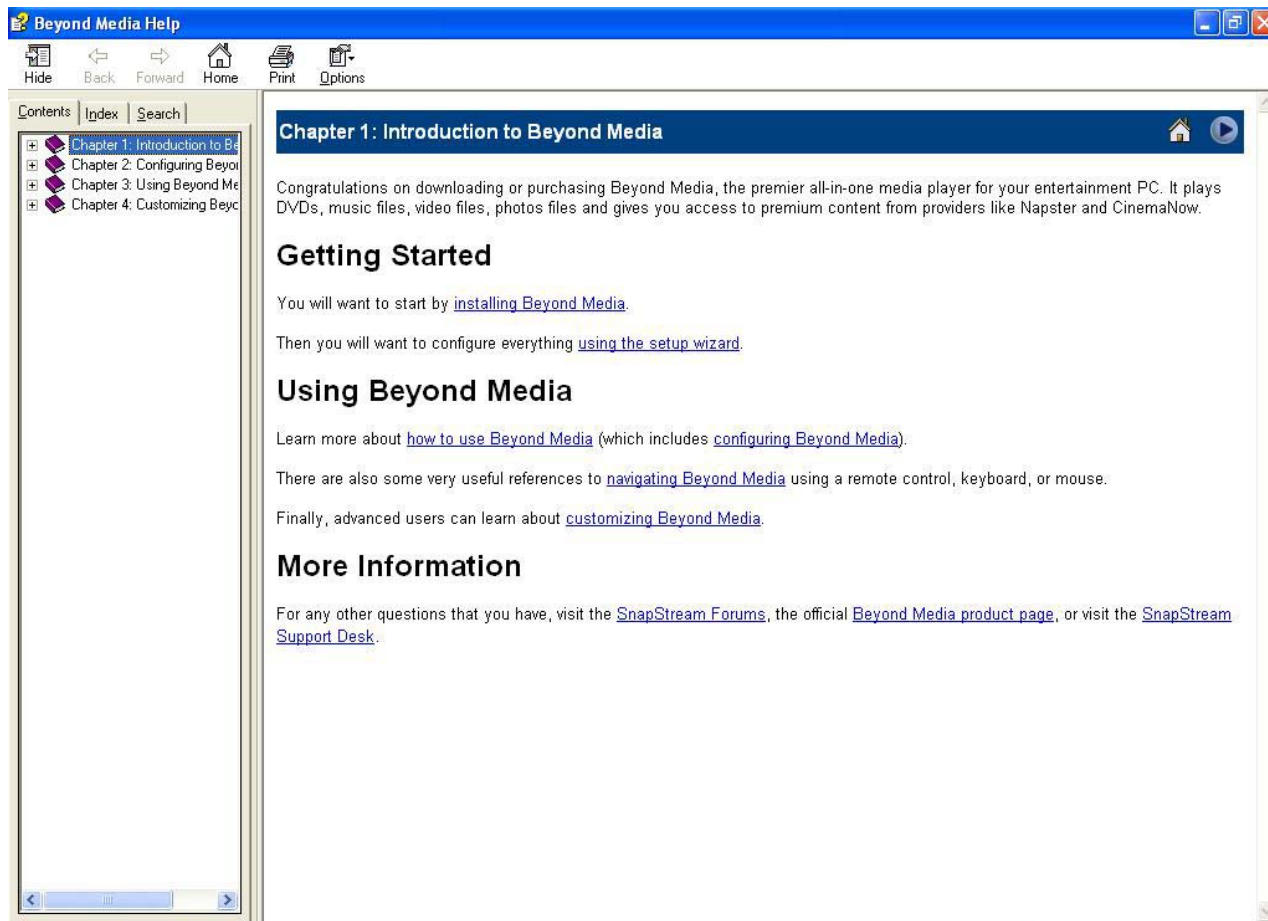
Section F – Beyond Media Setup Wizard

- From the Windows® Start Menu, choose **Programs > SnapStream > Beyond Media > Beyond Media Setup Wizard**



Section G - SnapStream Beyond Media Help

- From the Windows® Start Menu, choose **Programs > SnapStream > Beyond Media > Beyond Media Help**



Chapter 5: Installing Software Drivers and Setup - Windows Media Center Edition version with remote control



1 Insert the installation CD that came with the product. Windows XP autorun feature should automatically load the installation menu shown above

or

1 From the Windows® **Desktop**, click **My Computer > CD or DVD drive (VisionTek logo will be present)**

2 Click **Install** ATI TV Tuner Drivers (WDM drivers)

3 Follow the onscreen instructions and **reboot** as prompted

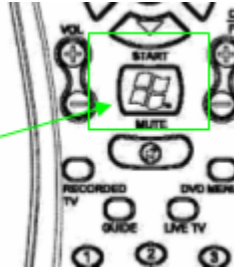
Note: If video is not displayed, you may need to update your graphics card drivers

Setup Wizard for Windows® XP Media Center Edition® 2005

After you've completed hardware setup and installed all of the software drivers you are now ready to proceed with configuration.

- 1 Press the green button on the remote control and you will be brought through the Microsoft Media Center Edition setup wizard.

Launch Windows XP Media Center Edition by pressing the Green Button with the Windows Flag



- 2 Follow the instructions of the wizard.

Note: If video is not displayed, you may need to update your graphics card drivers.

Using Windows® XP Media Center Edition® 2005

To start TV from Windows® XP Media Center Edition® 2005

Note: You must have Windows® XP Media Center Edition® 2005 installed on your computer.

- 1 In the Windows® Start Menu, click **Media Center**.
or
- 1 From the Windows® Start Menu, choose **Programs > Accessories > Media Center > Media Center**.
- 2 Click the **MY TV** button, and then click **Live TV**.

Note: If video is not displayed, you may need to update your graphics card drivers.

For more help using TV Tuner cards and remote control devices in Media Center Edition please refer to the documentation provided with your PC, or Media Center Edition software.

CHAPTER 6: Capturing Video

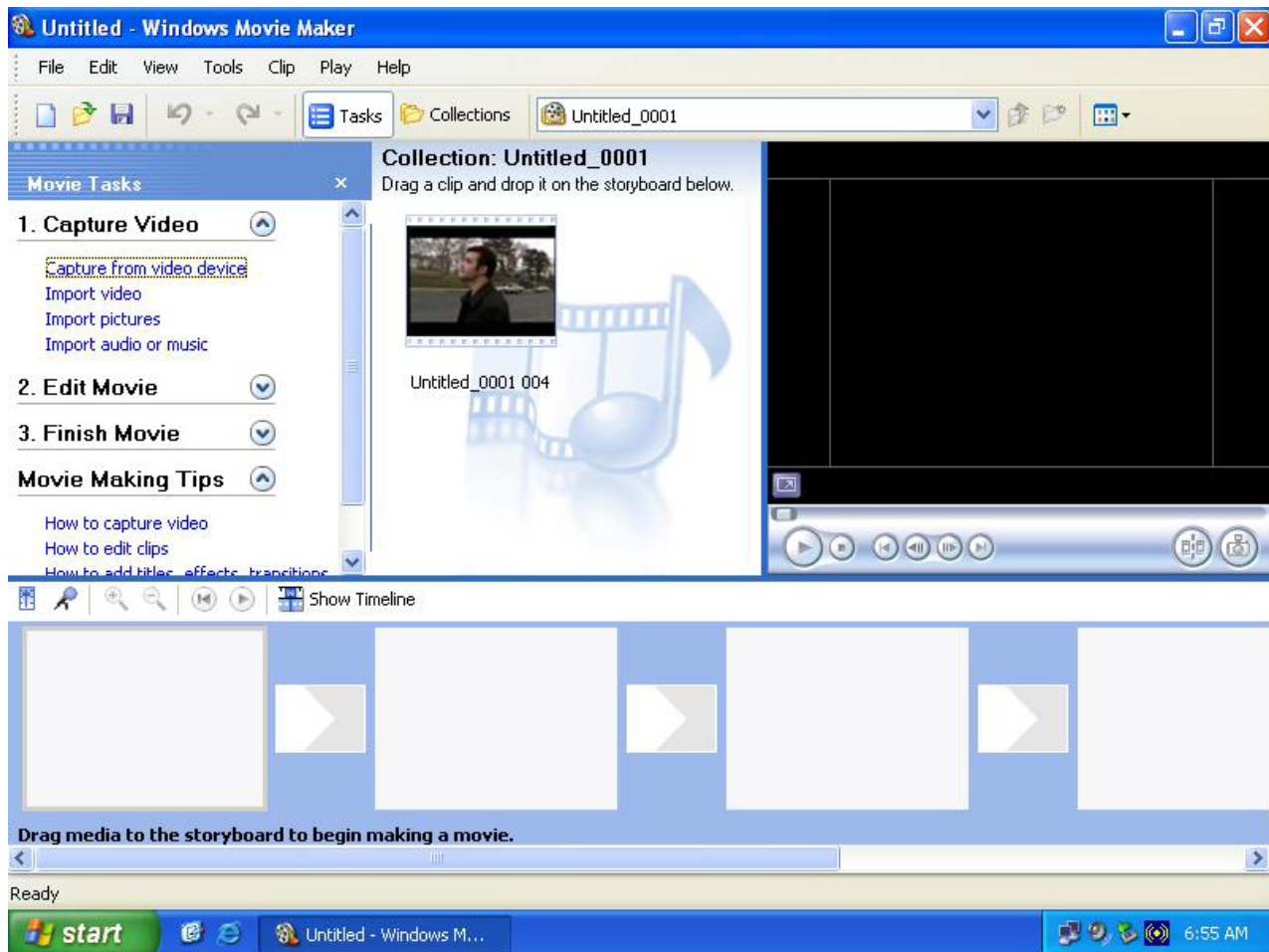
Disclaimer: This product incorporates copyright protection technology that is protected by method claims of certain U.S. patents and other intellectual property rights owned by Macrovision Corporation and other rights owners. Use of this copyright protection technology must be authorized by Macrovision Corporation, and is intended for home and other limited viewing uses only unless otherwise authorized by Macrovision Corporation. Reverse engineering or disassembly is prohibited.

Windows Movie Maker

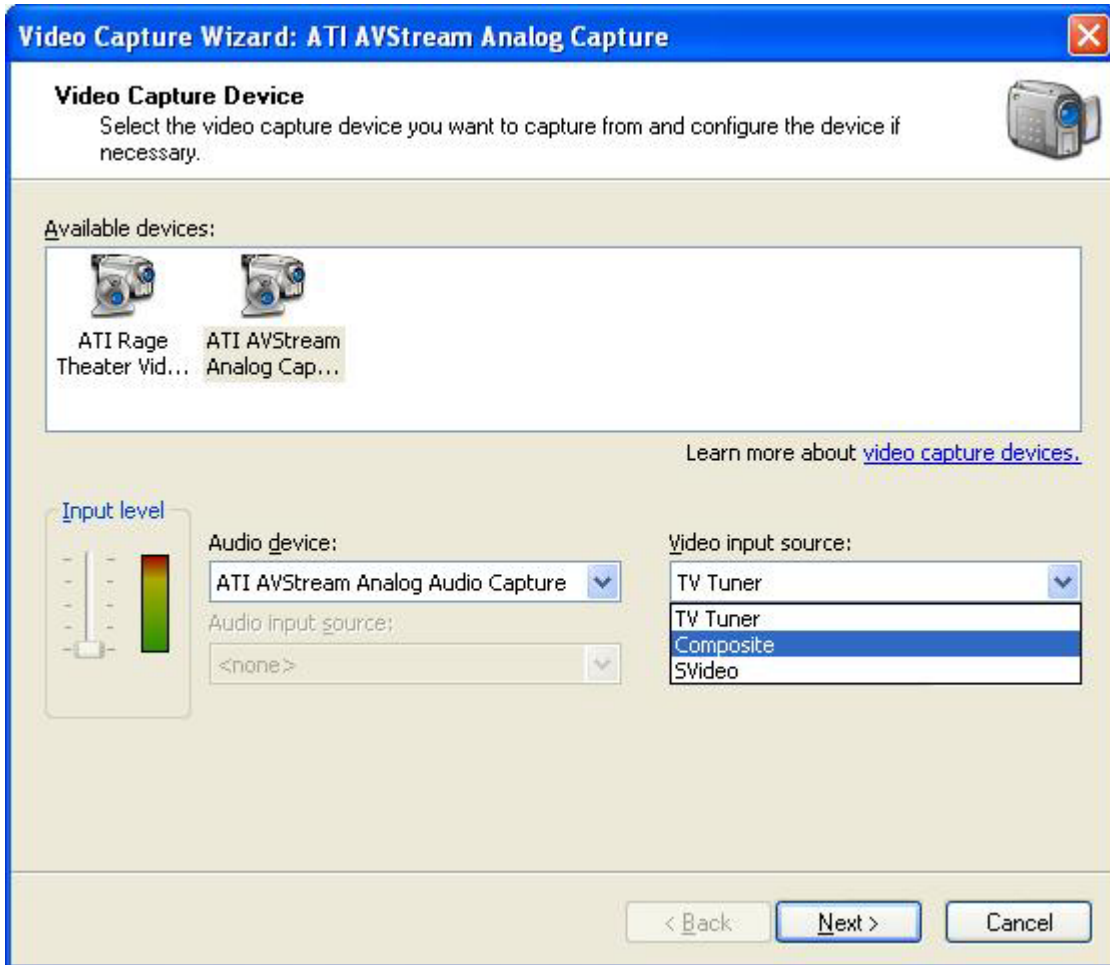
Applicable for Windows XP Home, XP Pro, XP Media Center Edition. Theater 550 Pro XP Edition with SnapStream and Media Center Edition.

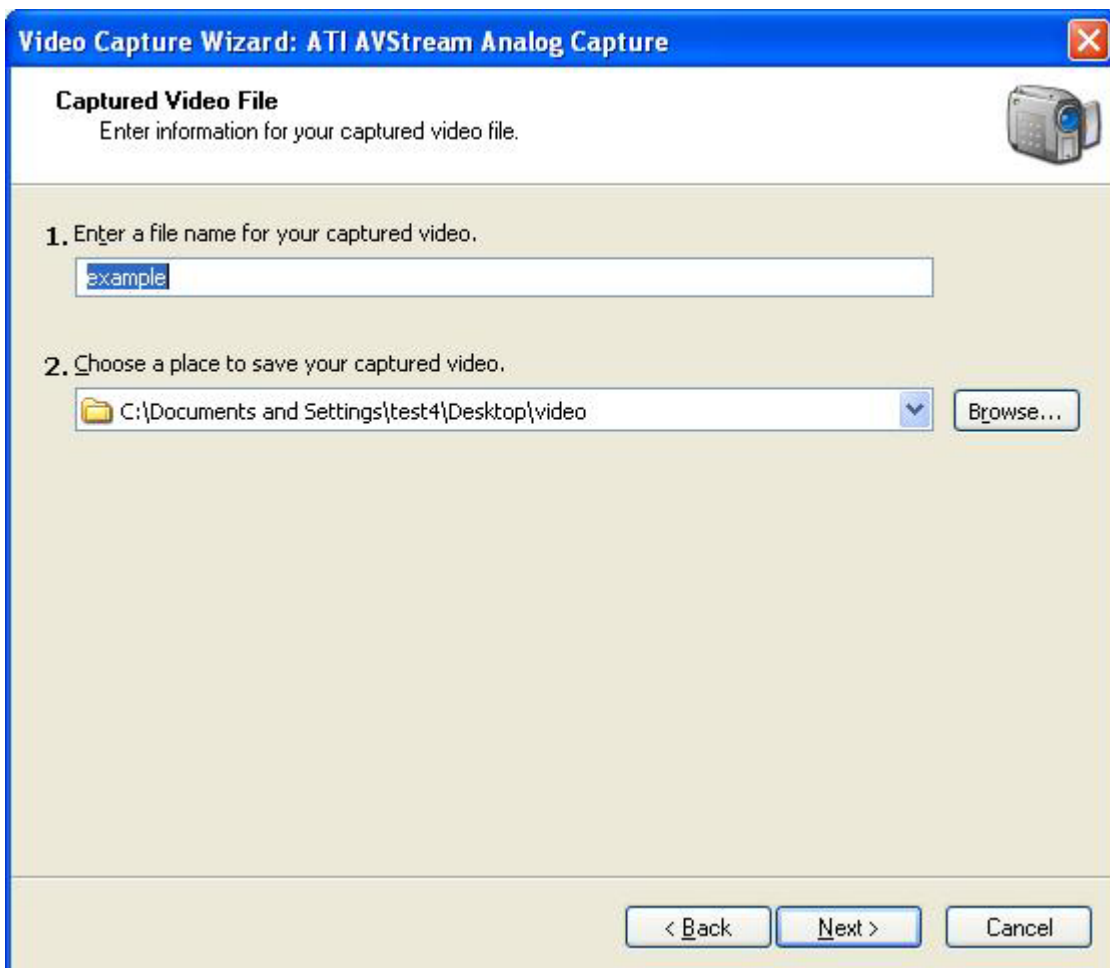
Reminder: For assistance configuring your hardware setup please refer to Chapter 2 – “Installing your THEATER™ 550 PRO-based TV tuner card in Windows XP Home, Pro, and Media Center Edition.”

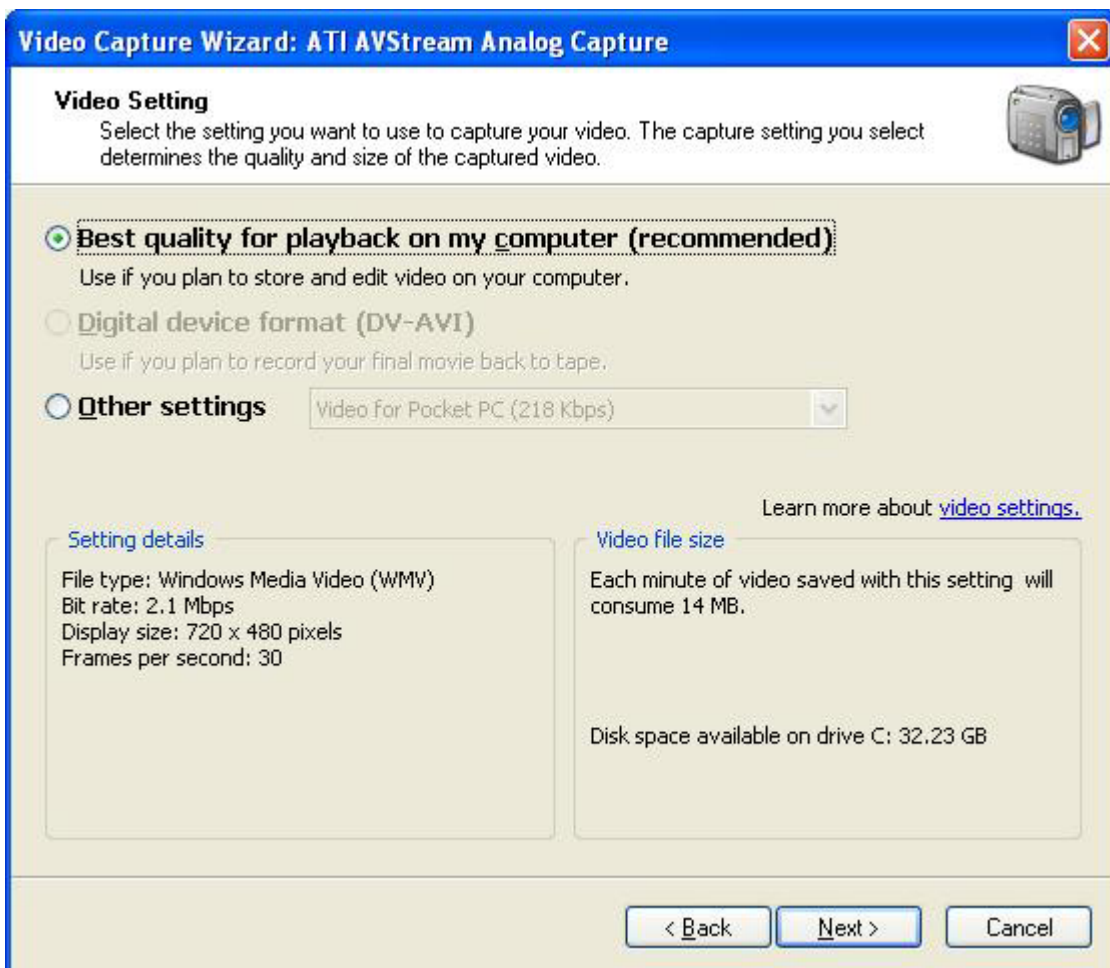
From the Windows® **Start** button, click **Programs > Accessories > Windows Movie Maker**





- 1 Double-click **Capture from video device**
- 2 Highlight the **ATI AVStream Analog Capture Device** (as shown below)
- 3 Select **Video Input Source** (device that you are capturing from)





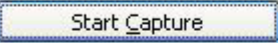



Video Capture Wizard: ATI AVStream Analog Capture 

Capture Video 


Click the Start Capture button to begin capturing your video. You can capture one or more video clips.

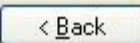
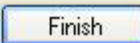
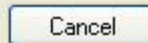
Steps:

1. 
2. 
3. To capture another video clip, repeat steps 1 and 2.


Video captured: **0:00:00**
Size of video file: **0 KB**

Estimated disk space available:
32.23 GB remaining on drive C:

Create clips when wizard finishes
 Mute speakers
 Capture time limit (hh:mm): 

Preview:



CHAPTER 7: Reference

This chapter offers troubleshooting tips and provides customer-care, warranty, and compliance information.

Troubleshooting

The following troubleshooting tips may help if you experience problems. ATI's documentation contains helpful installation/configuration tips and other valuable feature information. Please contact VisionTek or ATI for more advanced troubleshooting information.

Problem	Possible Solution
Video is Unstable or Only Black and White	<ul style="list-style-type: none">• Check that you are using the correct broadcast standard format.• Check the quality of your incoming TV signal on another receiver; bad reception may be the cause.• Try connecting your tuner directly to the cable TV or antenna source. Too many splitters in the cable will degrade the signal.
There is No Video or Audio	<ul style="list-style-type: none">• Ensure that your cable or antenna is connected.• In the TV Video Settings page, ensure that the video connector is set to the correct source.• Check that the audio and video connectors are securely plugged into the correct jacks.• Check that your video card is securely seated in its slot. Please refer to the user guide for the card location.
Video Recording Stops Unexpectedly	<ul style="list-style-type: none">• Video files are typically very large; ensure that you have sufficient disk space.• Ensure that you are recording to the correct hard disk - check the Record on Drive setting in the Media Center by clicking on My TV, then Settings, then Recorder which takes you to the Recorder Storage page.• The maximum file size for the FAT32 file system is 4 Gigabytes.• Disable screen savers while recording.• Disable Power management while recording.

Problem	Possible Solution
Dropped Frames During Video Recording	<p>Dropped frames during video recording indicates that some part of the system is not fast enough to keep up with the recording. Recording video is a very demanding task for even the most powerful system. To achieve the best results, you must dedicate the PC to recording, and ensure that nothing else is active during recording.</p> <ul style="list-style-type: none"> • Defragment your hard drive. • A large, dedicated disk is recommended if you plan to do much video recording. • Ensure that DMA is enabled for your hard drive, to improve disk access speed and free up the system CPU. • Close all other running tasks, including those in the System Tray — clock, popup reminders, virus scanners, etc. • Close and exit from any Task Scheduler. • Do not log on to your network. • Do not connect USB devices while recording. • Do not open or close CD-ROM trays while recording. • Do not move the mouse while recording.
Poor TV Reception	<ul style="list-style-type: none"> • If you use an indoor antenna, you will get the best results with an amplified model. Place it as far away from the PC monitor as possible, to avoid interference. • Splitting the cable or antenna input can reduce the signal quality. For the best reception, connect the cable or antenna directly to your card.

Getting Additional Accessories

Additional accessories can be purchased from the following:

Remote Control for Snapstream: <http://store.snapstream.com/firefly.html>

IR Blaster for Snapstream: <http://store.snapstream.com/usb-uirt.html>

VisionTek.com Store: <https://www.visiontek.com/store/catalog/>

Product Registration

You may register your product with VisionTek by following the link below.

<http://www.visiontek.com/registration.html>

Customer Support Options

If you require further assistance with your product, the following Customer Care options are available to you:

Service	Access	Additional Info
Online	www.visiontek.com www.ati.com	<ul style="list-style-type: none"> • Always available. • Complimentary.
VisionTek Telephone US	Visiontek 1-866-VTEK-411 (1-866-883-5411)	<ul style="list-style-type: none"> • 8:00AM - 5:00PM CST. Monday thru Friday.
ATI Telephone US & Canada	1-905-882-2626	<ul style="list-style-type: none"> • 9:00AM - 7:00PM EST. Monday thru Friday. • Complimentary for registered users only ▪ International and local toll charges to Canada may apply.
ATI Telephone US & Canada Priority Pay-Per-Incident	1-900-733-2843	<ul style="list-style-type: none"> • 9:00AM - 7:00PM EST. Monday to Friday. • \$19.95 per incident (subject to change without notice).

VisionTek tech Support and/or ATI Customer Care will work to resolve your issue and help you to get your product up and running. If your issue is not resolved, our technicians will determine whether the difficulty you are experiencing is the result of the product, whether your product contains a defect, and whether your product should be returned to VisionTek for warranty service.

- ATI Customer Care is unable to assist with refunds, returns, or exchange specific inquiries. If resolving the problem being experienced is critical to your decision to keep the product, it is your responsibility to ensure that you know and are within the period of time your reseller will allow for refunds, returns or exchange.
- ATI is not responsible for any expense incurred accessing Customer Care. It is expected that customers will review the expense associated with the available support options and will choose the method that best meets their needs and budget.
- ATI Customer Care reserves the right to limit support options for products that are not registered or are at End of Life.

Warranty Service

Please contact your original point of sale or VisionTek for warranty service.

Compliance Information

FCC Compliance Information

This THEATER™ 550 PRO-based TV tuner card product complies with FCC Rules part 15. Operation is subject to the following two conditions

- This device may not cause harmful interference, and
- This device must accept any interference received, including interference that may cause undesired operation.

This equipment has been tested and found to comply with the limits for a Class B digital device, pursuant to Part 15 of the FCC Rules. These limits are designed to provide reasonable protection against harmful interference in a residential installation. This equipment generates uses and can radiate radio frequency energy and, if not installed and used in accordance with manufacturer's instructions, may cause harmful interference to radio communications. However, there is no guarantee that interference will not occur in a particular installation. If this equipment does cause harmful interference to radio or television reception, which can be determined by turning the equipment off and on, the user is encouraged to try to correct the interference by one or more of the following measures:

- Re-orient or relocate the receiving antenna.
- Increase the separation between the equipment and receiver.
- Connect the equipment to an outlet on a circuit different from that to which the receiver is connected.
- Consult the dealer or an experienced radio/TV technician for help.

The use of shielded cables for connection of the monitor to the graphics card is required to ensure compliance with FCC regulations. Changes or modifications to this unit not expressly approved by the party responsible for compliance could void the user's authority to operate this equipment.

Industry Canada Compliance Statement

ICES-003 This Class B digital apparatus complies with Canadian ICES-003.

Cet appareil numérique de la Classe B est conforme à la norme NMB-003 du Canada.

For further compliance information:

ATI Research Inc.
4 Mount Royal Ave.
Marlborough, MA
01752-1976
USA
508-303-3900

CE Compliance Information

EMC Directive 89/336/EEC and amendments 91/263/EEC, 92/31/EEC and 93/68/EEC, Class B Digital Device EN 55022:2003/CISPR 22 Class B, Limits and Methods of Measurement of Radio Interference Characteristics Information Technology Equipment.

EN 55024:1998/CISPR 24:1997 +A1:2001 +A2:2003, Immunity of Information Technology Equipment (ITE), including EN 61000-4-2, EN 61000-4-3, EN 61000-4-4, EN 61000-4-5, EN 61000-4-6

Low Voltage Directive for TV-Tuner-Equipped products 73/23/EEC - The Low Voltage Directive.

EN 60950: 1992+A1+A2+A3+A4 - Safety of Information Technology Equipment.

Informations de conformité de la CE

Directive EMC 89/336/CEE et amendements 92/31/CEE et 93/68/CEE, pour dispositif numérique de Classe B.

EN 55022:2003/CISPR 22:1997, - Classe B - Limites et méthodes de mesure des caractéristiques d'interférences radiophoniques, Matériel des technologies de l'information.

EN 55024:1998/CISPR 24:1997 +A1:2001 +A2:2003, Norme sur l'immunité de matériel des technologies de l'information, et comprenant EN 61000-4-2, EN 61000-4-3, EN 61000-4-4, EN 61000-4-5, EN 61000-4-6

Directive de Basse Tension pour produits équipés tuner TV.

73/23/CEE - Directive de basse tension.

EN 60950 : 1992+A1+A2+A3+A4 - Sécurité du matériel des technologies de l'information.

CE-Konformitätserklärung

MC Richtlinie 89/336/EEC und Änderungen 92/31/EWG und 93/68/EWG, Digitales Gerät der Klasse B.

EN 55022:2003/CISPR 22:1997, - Klasse B - Grenzwerte und Meßverfahren für Funkstörungen von Einrichtungen der Informationstechnik.

EN 55024:1998/CISPR 24:1997 +A1:2001 +A2:2003, Unempfindlichkeits-Standard für informationstechnische Ausrüstungen, einschliesslich EN 61000-4-2, EN 61000-4-3, EN 61000-4-4, EN 61000-4-5, EN 61000-4-6

Niederspannung Richtlinie für Produkte Enthalten Fernsehen tuner 73/23/EWG - Niederspannungsrichtlinie.

EN 60950: 1992+A1+A2+A3+A4 - Sicherheit für Einrichtungen der Informationstechnik.