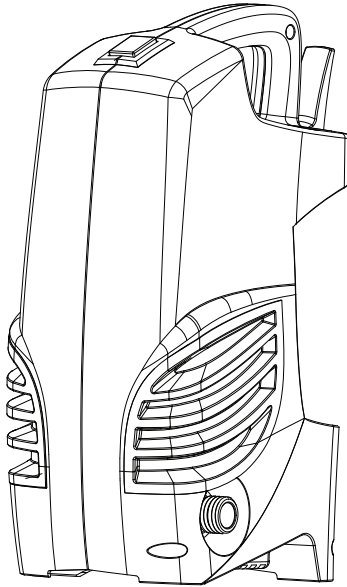


ACTIVEPRODUCTS

MODEL NO.: YE03
SKU: 039-8591-4



1450 PSI ELECTRIC PRESSURE WASHER Owner's Manual

QUESTIONS, PROBLEMS, MISSING PARTS?

Before returning to your retailer, visit our web site or call our customer service at www.activeproducts.com / 1-866-924-7626

PLEASE KEEP THE ORIGINAL BOX, PACKAGING AND RECEIPT. BEFORE OPERATING THIS UNIT, PLEASE READ THIS MANUAL THOROUGHLY AND RETAIN IT FOR FUTURE REFERENCE. IF YOU MUST STORE YOUR PRESSURE WASHER IN A PLACE WHERE THE TEMPERATURE IS BELOW 5°C, YOU MUST APPLY WINTERIZING PROCEDURE TO PROTECT IT. FAILURE TO WINTERIZE THE UNIT MAY PERMANENTLY DAMAGE PUMP AND VOID THE WARRANTY.

Purchase Date: _____

Serial #: _____

TABLE OF CONTENTS

Technical specifications	1
Warranty	2
Important precautions – Read first!	3
Safety features and electrical power information	5
Parts and diagram list	6
Assembly and operating instructions.....	7
Using the accessories.....	11
Working with detergents	12
Shutting down and cleaning up.....	13
Taking a break	13
Winterizing and long-term storage	14
Cleaning and maintenance	15
Troubleshooting	16

TECHNICAL SPECIFICATIONS

Pressure Washer Specifications

Peak Pressure: 1450 PSI
Power Source Requirement: 120 V / 60 Hz
Electrical cord: 23' (7 m)
High-pressure hose: 20' (6 m)
Water Flow Rate: 1.25 GPM
Current Drawn: 11A
Inlet water: Cold tap water

WARRANTY

LIMITED 1 YEAR WARRANTY

This pressure washer is warranted to be free of defects in materials and workmanship under normal residential use for one (1) year.

Specific warranty applies to:

- Electric motor and pump are warranted for one (1) year.
- Standard accessories and attachments including the gun, wand/hose and coupler are warranted for a ninety (90) day period.

The warranty period is calculated from the date of purchase by the end user and covers the cost for replacement parts/equipment. In order to verify a warranty situation a copy of the original receipt or gift receipt must accompany the warranty claim, along with the manufacturer's serial number from the product. Any warranty claim, work, or replacements given are to fulfill the terms of the original warranty period only.

The manufacturer's obligation under this warranty shall strictly be limited, at manufacturer's option, to replace any pressure washer or parts thereof, which in the opinion of the manufacturer, shows defect in workmanship or material. All decisions of Active Products with regard to this limited warranty shall be final. NO RETURNS or REFUNDS will be allowed by the retailer or manufacturer. To make a warranty claim or inquiry, you must call 1-866-924-7626. You must have the product serial number and receipt information ready.

If defects should appear within one year of purchase, you may return the unit with your receipt as proof of purchase to the place of purchase for an exchange of either a new or refurbished unit, at manufacturer's discretion. There will be no REFUNDS provided.

The warranty does NOT cover:

- Merchandise sold as reconditioned, used, demonstration or floor models.
- Any commercial, industrial or rental usage of this product. Any such usage will void the implied warranty.
- Any product that has been damaged by freezing, dropping, misuse, neglect, accident, abuse, improper handling, normal wear and tear, or non-compliance with the owner's manual.
- Any product that has been damaged by a contaminated water supply, water sediment or chemicals/detergents that are not approved by or recommended by Active Products.
- Any product that has been damaged by acts of nature such as fires, floods, earthquakes, lightning strikes, etc.
- Damage caused by repairs made by the end user or any service center not authorized by Active Products. Any such tampering will void the implied warranty.
- Any cost for shipping by the customer or authorized service center of the allegedly defective product.
- Any cost for shipping of replacement parts or accessories. Such shipping costs will be borne in full by the end user.
- Any non-standard or bonus accessory/attachement included with the original product.

The manufacturer shall in no event be liable for injuries to persons or property, or for incidental, contingent, special or consequential damages arising from the use of this product. This warranty does not apply to damage due directly or indirectly to misuse, abuse, negligence or accidents; repairs or alterations; or lack of maintenance. The manufacturer shall not be liable for any misrepresentations by stores, store employees, or any parties, that make claims on this product.

This warranty is non-transferable and only applies to products that were sold in and reside in Canada.

If you have any questions or comments, visit our web site at www.activeproducts.com or call our toll free customer service line at 1-866-924-7626.

IMPORTANT PRECAUTIONS – READ FIRST

⚠ Warnings ⚠

When using this product, basic precautions should always be followed:

- Read all the instructions before using the product.
- Water spray must never be directed toward any electric wiring, devices or directly toward the pressure washer machine itself, or fatal electric shock may occur.
- To reduce the risk of injury, do not operate the machine near children.
- Learn how to stop the machine and release pressure quickly. Be thoroughly familiar with the controls.
- Stay alert—watch what you are doing.
- For use with cold water supply only. Do not draw other liquids.
- The pressure washer should not be used in areas where gas vapours may be present. An electric spark could cause an explosion or fire.
- To minimize the amount of water getting into the pressure washer, the unit should be placed as far as possible from the cleaning site during operation.
- Avoid accidental starts. Shut power “OFF” before connecting or disconnecting cord to electrical outlets.
- Do not operate the product when fatigued or under the influence of alcohol or drugs.
- Do not stand on unstable surfaces. Stand with both feet balanced at all times.
- Prior to starting the pressure washer in cold weather, be sure ice has not formed on any part of the equipment.
- Never carry your pressure washer by the cord.
- Do not pull on the cord to disconnect from the outlet.
- To allow free air circulation, the pressure washer should not be covered during operation.
- Keep operating area clear of people and pets.
- Follow the maintenance instructions specified in the manual.

If replacement of the plug or cord is needed, use only identical replacement parts.

- This product or its power cord contains lead, a chemical known to cause cancer, birth defects or other reproductive harm. Wash hands after use.

⚠ Warnings ⚠

- **Do not use with flammable liquids and toxic chemicals.**
- **Injection Hazard: Equipment can cause serious injury if the spray penetrates the skin.**
- **Do not point the gun at anyone or any part of the body. In case of penetration, seek medical aid immediately.**
- **This system is capable of producing high pressure as rated in the Technical Specifications. To avoid rupture and injury, do not operate this machine with components rated less than the unit itself (including but not limited to spray guns, hose and hose connections).**
- **Before servicing, cleaning or removal of any parts, shut “OFF” power and relieve pressure.**
- **Do not spray electrical apparatus and wiring.**
- **If connection is made to a portable water system, the system must be protected against backflow.**

IMPORTANT PRECAUTIONS – READ FIRST

⚠ WARNING - Risk of Injury ⚠

Do Not Direct Discharge Stream at Persons.

- **High-pressure jet can be dangerous if misused.**
- **The jet must not be directed at persons, animals, electrical devices, or the unit itself.**

⚠ WARNING - Risk of Explosion ⚠

- **Do not spray flammable liquids.**
- **Do not use acids and solvents in this product.**
- **These products can cause physical injuries to the operator and irreversible damage to the machine.**

⚠ CAUTION - Gun Kicks Back ⚠

- **Hold with both hands**
- **The trigger gun safety lock prevents the trigger from being engaged accidentally.**
- **The safety feature DOES NOT lock trigger in the ON position.**

⚠ WARNING - Risk of Electric Shock ⚠

- **Inspect cord before using - do not use if cord is damaged.**
- **Keep all connections dry and off the ground.**
- **Do not touch plug with wet hands.**
- **Do not use extension cords longer than 50' (15.2 m). Only use 12 or 14 AWG rated extension cords.**

Save These Instructions

In a double-insulation product, two systems of insulation are provided instead of grounding. No grounding is provided on a double-insulated product, nor should a means for grounding be added to the product. Servicing a double-insulated product requires extreme care and knowledge of the system, and should be done only by qualified service personnel.

Replacement parts of a double-insulated product must be identical to the parts they replace. A double-insulated product is marked with the words “DOUBLE INSULATION” or “DOUBLE INSULATED”. The symbol “☐” may also be marked on the product.

SAFETY FEATURES & ELECTRICAL POWER INFORMATION

The pressure washer is equipped with a stop device that will sense when the trigger on the gun is released. It will open the power circuit to the motor, and cause the pressure washer motor to stop. The motor will start again when the trigger is pulled.

⚠ WARNING ⚠

The pressure washer is also equipped with a main power “ON/OFF” switch located on the unit. It should always be moved to the “OFF” position when the pressure washer is not being used to prevent possible injury or damage.

⚠ DANGER ⚠

Improper connection of power outlet can result in a risk of electric shock. Check with a qualified electrician or service personnel if you are in doubt as to whether the outlet is properly grounded. Do not modify the plug provided with the product—If it will not fit the outlet, have a proper outlet installed by a qualified electrician. Do not use any type of adaptor with this product.

Extension Cords

If possible, do not use extension cords with this product. However, if you must use one, observe all of the warnings and instructions listed below:

Use a sufficient gauge:

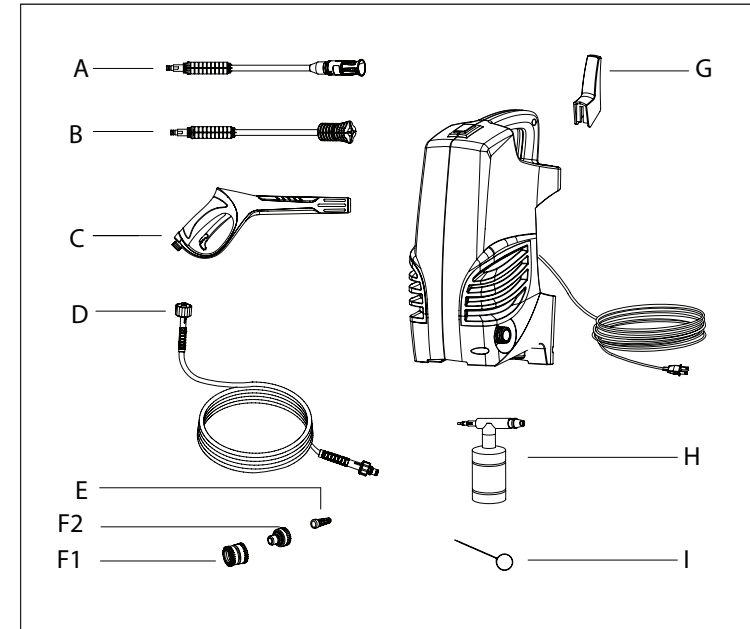
Maximum cable length: 50' (15.2 m). Only use 12 or 14 AWG rated extension cords.

- Use only extension cords that are intended for outdoor use. These extension cords are identified by a marking that reads “Acceptable for use with outdoor appliances; store indoors while not in use.”
- Use only extension cords having an electrical rating not less than the rating of the product.
- Do not use damaged extension cords. Examine extension cord before using and replace if damaged. Do not abuse extension cord and do not yank on any cord to disconnect.
- Keep cord away from heat and sharp edges.
- Always disconnect the extension cord from the receptacle before disconnecting the product from the extension cord.
- To reduce the risk of electric shock, keep all connections dry and off the ground. Do not touch plug with wet hands.

⚠ CAUTION ⚠

This machine has been designed for use with detergents that are specifically approved for pressure washer use. The use of other cleaning detergents may affect the operation of the machine and void the warranty.

PARTS AND DIAGRAM LIST



Item No.	Quantity	Part Name	Parts Number
A	1	Adjustable wand	YE03-020-0002
B	1	Turbo wand	XE03-020-0001
C	1	Spray gun	XE03-020-0003
D	1	High-pressure hose	YE03-020-0004
E	1	Water filter	YE03-020-0009
F1	1	Quick-connect coupling	XE03-030-0003
F2	1	Inlet adapter	XE03-030-0002
G	1	Hose bracket	YE03-000-0002
H	1	Detergent bottle assembly	YE03-050-0003
I	1	Needle (for nozzle cleaning)	YE03-062-0002

ASSEMBLY AND OPERATING INSTRUCTIONS

Surface Preparation

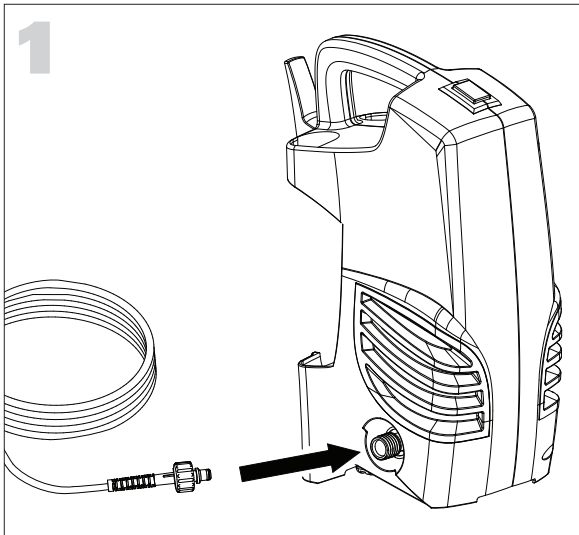
Before starting any cleaning task, it is important to inspect the area for objects that could create a hazard. Remove any objects from the work area that could be tripped over, such as toys or outdoor furniture. Ensure that all doors and windows are closed tightly.

Water Supply (Cold Water Only)

Only draw water through the unit. For use with cold water supply only. Water hose must be at least a 1/2" (13 mm) in diameter. Flow rate of water supply must not fall below 2 GPM (gallons per minute) [9.1 lpm (litres per minute)]. Flow rate can be determined by running the water for one minute into an empty 5-gallon (19 L) container.

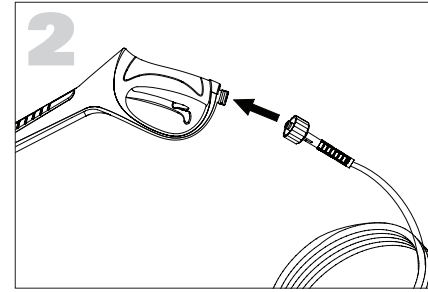
⚠ CAUTION ⚠

- **Never use the pressure washer to draw in water contaminated with solvents (e.g. paint thinners, gasoline, oil, etc.).**
- **Dirt in the water inlet will damage the unit. To avoid this risk, we recommend checking the water filter (located inside the water inlet. To clean it out see Maintenance section).**
- **Always prevent debris from being drawn into the unit by using a clean water source and an additional accessory water filter if required.**
- **To prolong the life of the unit, rest the unit for 5 minutes after every 30 minutes of use.**

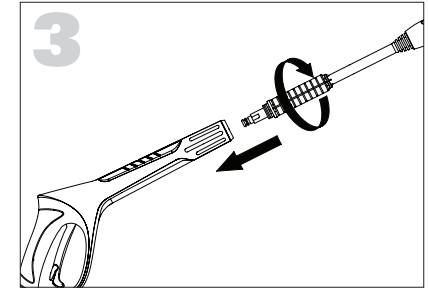


Attach high pressure hose to the machine's water outlet (hand tighten only).

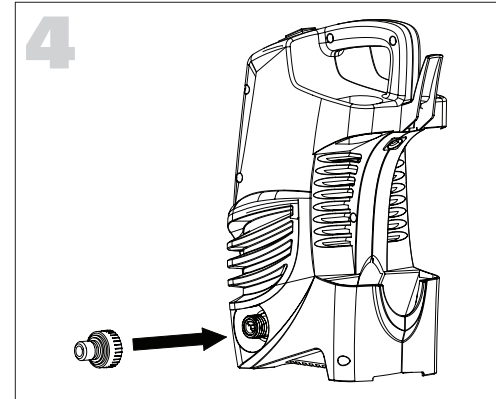
ASSEMBLY AND OPERATING INSTRUCTIONS



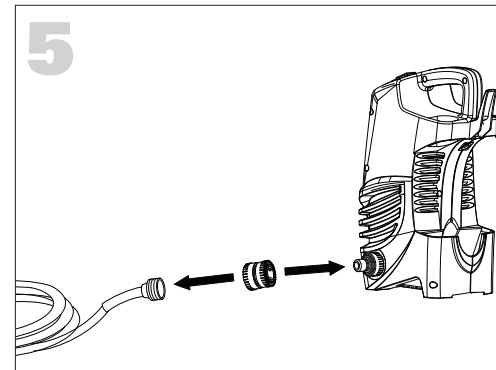
Attach high pressure hose to the gun assembly (hand tighten only).



Insert choice of wand to the gun and twist 1/4 turn to lock in position.

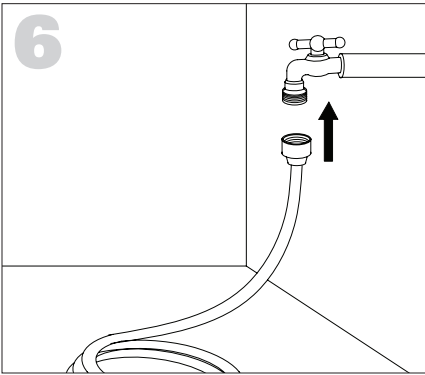


Attach the inlet adapter to the machine's water inlet. Hand tighten only. (Some models come with inlet adapter pre-assembled. Check your unit.)

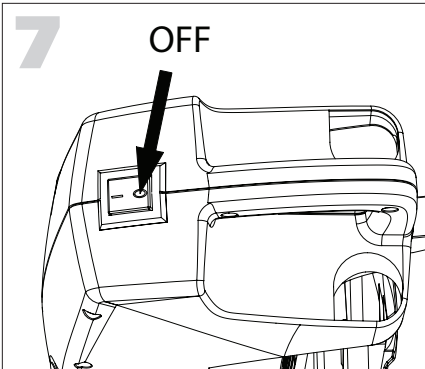


Attach quick connect coupling to garden hose (hand tighten only) and attach to inlet adapter.

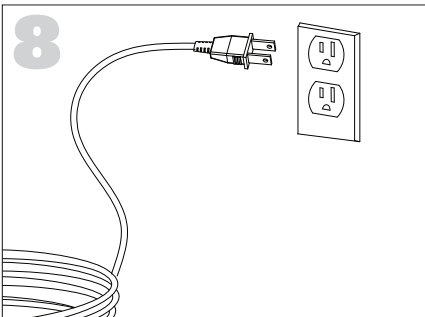
ASSEMBLY AND OPERATING INSTRUCTIONS



Attach garden hose to water supply and turn water on.

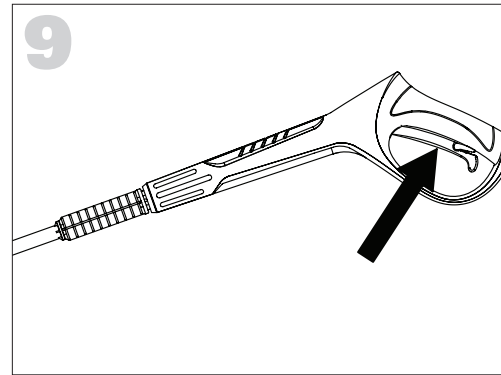


Make sure the ON/OFF switch is on the OFF position.

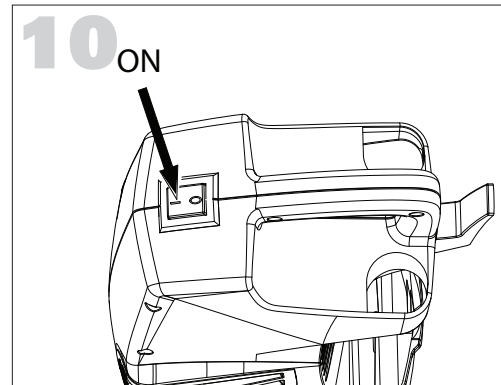


Completely unwind power cord and plug the unit into an outlet.

ASSEMBLY AND OPERATING INSTRUCTIONS



Depress trigger until there is a steady stream of water.



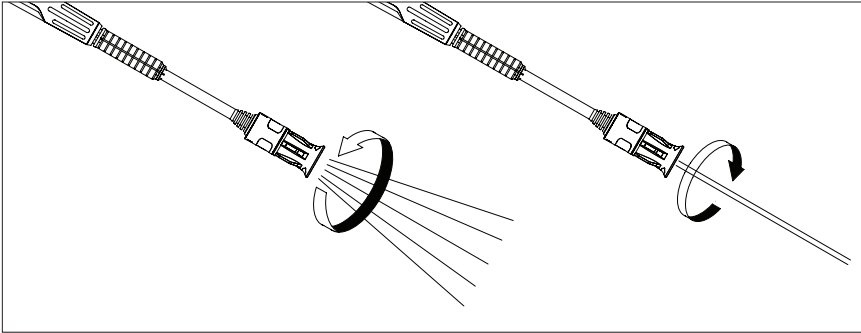
Press the ON Button.

⚠ CAUTION ⚠

Drain unit after each use (for storage): remove water connection, turn ON the machine for a few seconds and press gun trigger to bleed remaining water in the pump. Turn OFF immediately.

ASSEMBLY AND OPERATING INSTRUCTIONS

USING THE ACCESSORIES



Adjusting The Spray

The adjustable spray nozzle can be adjusted from fan to jet. The spray is adjusted from jet to fan spray by turning the nozzle.

⚠ CAUTION ⚠

Jet spray adjustment is very aggressive. Do not adjust while spraying.

ASSEMBLY AND OPERATING INSTRUCTIONS

WORKING WITH DETERGENTS

Working with detergent ensures a quick soaking of the dirt, and allows the high-pressure water to penetrate and remove the dirt more effectively. Always spray detergent on a dry surface, do not pre-soak area. Wetting the surface first dilutes the detergent and reduces its cleaning ability.

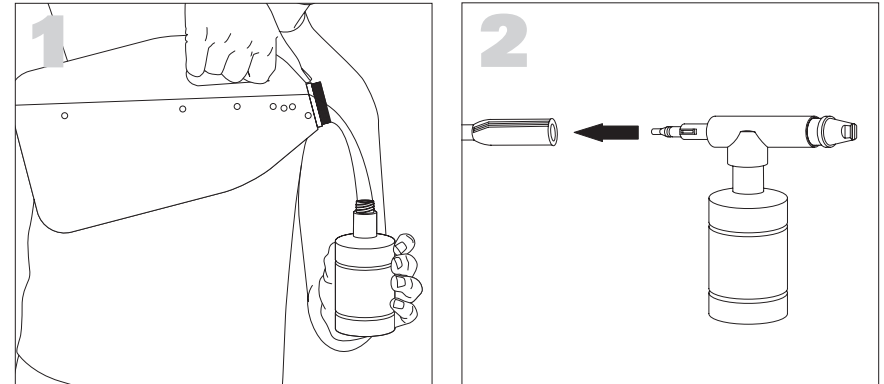
⚠ CAUTION ⚠

Make sure the gun safety lock is engaged so the trigger cannot be squeezed while the detergent nozzle is being attached.

⚠ WARNING ⚠

Never use bleach, chlorine products and other corrosive chemicals. Never use liquids containing solvents (i.e, paint thinners, gasoline, oils). Never use ammonia products. Never use acid-based products.

These products can cause physical injuries to the operator and irreversible damage to the machine and/or damage the surface being cleaned.



- 1 Fill the detergent container with detergent only. Do not put any water into container.
- 2 Attach the detergent wand onto the gun as shown. Make sure all components are locked.
- 3 Release the gun safety lock and pull the trigger to operate the unit and apply detergent.
- 4 Do not allow the detergent to dry on the surface that you are cleaning.

⚠ CAUTION ⚠

Damage may occur to painted surface if chemical is allowed to dry on surface. Wash and rinse a small section at a time. Avoid working on hot surfaces or in direct sunlight.

ASSEMBLY AND OPERATING INSTRUCTIONS

SHUTTING DOWN AND CLEANING UP

- 1 Turn the switch to "OFF" (O) position.
- 2 Unplug the power cord from the outlet.
- 3 Turn off the water supply.
- 4 Press trigger to release any remaining water pressure.
- 5 Disconnect the garden hose from the unit.
- 6 Engage the gun safety lock.

⚠ WARNING ⚠

Turn off water supply and squeeze trigger to depressurize the unit. Failure to do so could result in personal injury due to discharge of high-pressure water.

TAKING A BREAK

If taking a break of five minutes or more:

- 1 Engage gun safety lock.
- 2 Turn unit to "OFF" (O) position.
- 3 Unplug the power cord from the outlet.

⚠ CAUTION ⚠

Never use:

- Bleach, chlorine products and other corrosive chemicals
- Liquids containing solvents (i.e., paint thinners, gasoline, oils)
- Tri-sodium phosphate products
- Ammonia products
- Acid-based products

These chemicals will harm the unit and will damage the surface being cleaned.

WINTERIZING AND LONG-TERM STORAGE

OPTIMUM WINTERIZING PROCEDURE

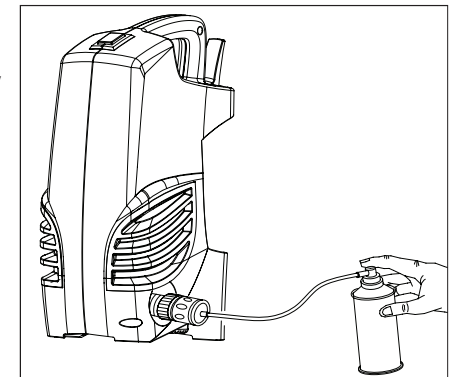
Winterizing your pressure washer will help protect and prolong its life. We strongly recommend you follow the below steps using Pressure Washer Pump Saver (39-8602-0). This will keep the internal parts lubricated, protected from rust, and prevents the pump from freezing.

- 1 Connect Pressure Washer Pump Saver hose onto the adaptor and quick-connect coupling.
- 2 Depress button on top of Pump Saver container.
- 3 Continue until fluid exits the pressure hose.
- 4 Remove the hose from pump inlet.

QUICK WINTERIZING PROCEDURE

If you cannot do the Optimum Winterizing procedure, you can still protect your pressure washer from winter-damage by doing below:

- 1 Disconnect all water connections.
- 2 Turn on the machine for a few seconds, until the remaining water in the pump exits. Turn off immediately.
- 3 Do not allow high-pressure hose to become kinked.
- 4 Store the machine and accessories in a room that does not reach freezing temperatures. Do not store near furnace or other sources of heat as it may dry out the pump seals.



Recommended: Pressure Washer Pump Saver (39-8602-0)

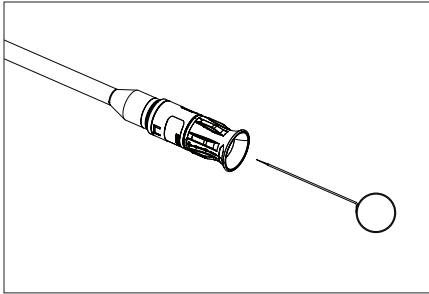
⚠ CAUTION ⚠

Drain gun assembly of any remaining water. Aim gun downwards and squeeze trigger.

CLEANING AND MAINTENANCE

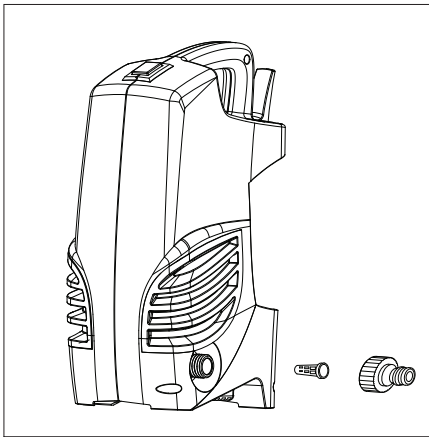
Connections

Connections on pressure washer hoses; gun and spray wand should be cleaned regularly and lubricated with non-water soluble grease.



Spray Tips Only

Clogging of the spray tips causes the pump pressure to be too high and cleaning is immediately required. You can clean the spray tips by carefully inserting the needle, or a thin, sharp instrument (i.e. paperclip) into the tip to rid it of deposits.



Water Filter Screen

The pressure washer is equipped with a water inlet screen to protect the pump. If the screen is not kept clean, the flow of water to the pressure washer will be restricted and the pump may be damaged.

1. To clean inner water screen, remove quick-connector and remove the filter screen from the pump inlet.
2. Rinse screen until it is free of debris and blockage.
3. Replace screen and quick-connector immediately to prevent any foreign matter from entering the pump.

TROUBLESHOOTING

Disconnect the machine from the power source before making any repairs.

Symptom	Cause	Solution
Motor will not start.	On/Off switch is in the "OFF" (O) position.	Turn switch to the "ON" (I) position.
	Power cord is not plugged in.	Plug in power cord.
	Extension cord is too long. Extension cord is not proper gauge. Extension cord is damaged.	Replace extension cord with either a 25' (7.6 m) 14AWG cord or a 50' (15 m) 14AWG cord.
	Electrical outlet does not supply adequate power.	Try a different outlet.
	Tripped pressure washer circuit breaker	Allow to cool, and restart unit.
Unit does not reach high pressure.	Diameter of garden hose is too small.	Replace with a 1" (25 mm) or 5/8" (16 mm) garden hose.
	Water supply is restricted.	Check garden hose for kinks, leaks and blockage.
	Not enough water supply.	Open water source fully.
	Water inlet filter is clogged.	Remove filter and rinse in warm water.
	Pump is sucking air.	Check that hoses and fittings are airtight. Turn "OFF" machine, and purge pump by squeezing trigger gun until a steady flow of water emerges through the nozzle.
Output pressure varies high and low.	Not enough inlet water supply.	Turn water on fully. Check garden hose for kinks, leaks or blockage.
	Pump is sucking air.	Check that hoses and fittings are airtight. Turn "OFF" machine, and purge pump by squeezing trigger gun until a steady flow of water emerges through the nozzle.
	Water inlet filter is clogged.	Remove filter and rinse with warm water.

TROUBLESHOOTING

Symptom	Cause	Solution
Output pressure varies high and low. (continued)	Discharge nozzle is obstructed.	Blow out or remove debris with a fine needle.
Detergent not working.	Detergent container is empty.	Add more detergent.
	Detergent bottle or suction tube not properly connected.	Check connections.
	Detergent is too thick.	Dilute detergent.
	Damaged or clogged detergent suction tube.	Remove obstruction or replace detergent suction tube.
Garden hose connection leaks.	Loose fittings.	Tighten fittings.
	Missing/worn rubber washer.	Insert new washer.
Spray wand, extension, or nozzle leaks.	Broken o-ring or plastic insert.	Call the Toll-Free Hotline.
Pump is noisy	Pump is sucking air	Check that hoses and fittings are airtight. Turn off machine and purge pump by squeezing trigger gun until a steady flow of water emerges through the nozzle.
	Water filter is clogged.	Remove water filter and rinse in warm water.
Water leaks from pump (up to 10 drops per minute is permissible).	Loose fittings.	Check that all fittings are tight.
	Water seals are damaged or worn.	Call the Toll-Free Hotline
Oil is dripping	Oil seals are damaged or worn.	Call the Toll-Free Hotline

TROUBLESHOOTING

Symptom	Cause	Solution
Motor buzzes but fails to run.	Supply voltage below minimum.	Verify that only the pressure washer is running on this circuit.
	System has residual pressure.	Turn unit "OFF"; squeeze trigger on spray wand to release pressure, then turn unit "ON".
	Voltage loss due to extension cord.	Unplug any extension cords attached and plug the unit directly into the outlet.
	Pressure washer not used for long periods.	Call the Toll-Free Hotline.
	Residual friction among components. Unit might hum.	Disconnect water supply and power ON for 2 to 3 seconds, repeat couple times or until the motor starts.
	No Water	Water supply is OFF.
Kink in the garden hose.		Remove kink in garden hose.

IF YOU ENCOUNTER ANY ADDITIONAL DIFFICULTIES NOT LISTED, VISIT OUR WEBSITE AT www.activeproducts.com OR CALL CUSTOMER SERVICE AT **1-866-924-7626** FOR HELP.