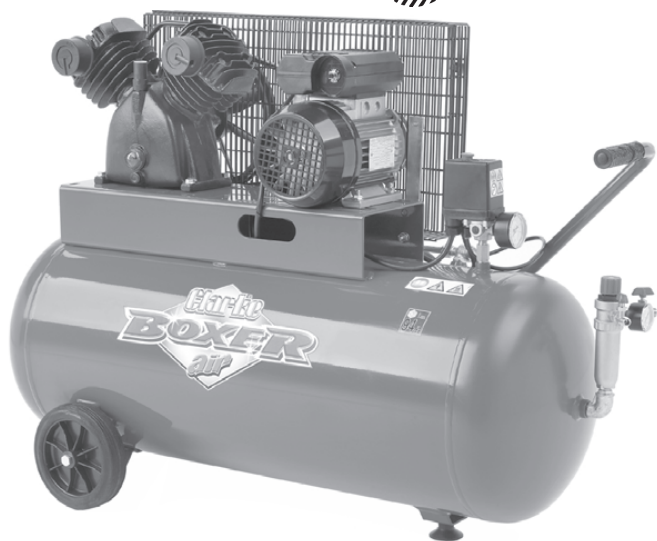


# ELIANTO®

# 24



## BOXER 100 AIR COMPRESSOR

### OPERATION & MAINTENANCE INSTRUCTIONS

Thank you for purchasing this Clarke BOXER 100 Air Compressor which is fitted with a 100 litre air reservoir.

Please read this leaflet thoroughly and carefully follow all instructions. In doing so you will ensure the safety of yourself and that of others around you, and you can look forward to the compressor giving you long and satisfactory service.

## GUARANTEE

This product is guaranteed against faulty manufacture for a period of 12 months from the date of purchase. Please keep your receipt as proof of purchase. This guarantee is invalid if the product is found to have been abused or tampered with in any way, or not used for the purpose for which it was intended.

Faulty goods should be returned to their place of purchase, no product can be returned without prior permission. This guarantee does not effect your statutory rights.

## CONTENTS

## PAGE

Safety Precautions .....	3
Warning Symbols .....	7
Electrical Connections .....	8
Parts Identification .....	9
Assembly .....	10
Preparation for use .....	12
Operating instructions .....	13
Routine Maintenance .....	16
Troubleshooting .....	19
Specifications .....	20
Parts Diagram .....	21
Parts List .....	22
Declaration of Conformity .....	23

## **SAFETY PRECAUTIONS**

### **WARNING!**

*As with all machinery, there are certain hazards involved with their operation and use. Exercising respect and caution will considerably lessen the risk of personal injury. However, if normal safety precautions are overlooked, or ignored, personal injury to the operator, or damage to property may result. It is in your own interest to read and pay attention to the following rules:*

### **WARNING!**

*When using the air compressor, you should follow basic safety precautions including the following to reduce the risk of personal injury. Make sure that you have read all of the instructions before using the air compressor. Keep this booklet with the compressor for future reference by the operator. Persons who have not read this booklet should not use the air compressor.*

### **WARNING!**

*Compressed air can be dangerous. Death or serious injury could result from improper or unsafe use of this compressor. To avoid these risks, use your common sense and follow these basic safety instructions. Compressed air should never be inhaled as it may contain toxic vapours or solid particles. Always work in good ventilation, especially when spraying paints or other toxic substances and always use a suitable face mask. Do not spray near sources of possible ignition.*

### **WARNING!**

*Attachments, hoses and accessories must meet or exceed the maximum pressure rating of this compressor.*  
*If low pressure parts are used, the air pressure could cause them to explode or fly apart, resulting in serious injury. Always take great care when releasing the pressure and connecting/disconnecting tools.*

### **WARNING!**

*This compressor must be connected to a power socket that is safeguarded by a suitable circuit breaker or fuse.*

# SAFETY PRECAUTIONS

**TRAINING:** Prior to use all operators should become familiar with the instructions in this booklet. In particular, become familiar with the ON/OFF control for emergency stopping.

**ALWAYS USE EYE PROTECTION:** When operating the air compressor, always use eye protection, and make sure that other people in the work area are also using eye protection. Eye protectors must provide protection from flying particles both from the front and from the side.

**NEVER TOUCH MOVING PARTS:** Never place your hand near any moving parts on the air compressor or operate with the covers removed.

**PROTECT YOUR SELF AGAINST ELECTRIC SHOCK:** Never operate the air compressor in wet or damp locations.

**DRESS PROPERLY:** Loose clothing or jewellery may be caught in moving parts. Always tie long hair back.

**KEEP VISITORS/CHILDREN AWAY:** Do not allow visitors/children to handle the air compressor or attachments and ensure that any people in the work area are suitably dressed.

**KEEP THE WORK AREA CLEAN:** Cluttered areas invite accidents, clear the work area of all unnecessary tools, debris and furniture.

**DISCONNECT THE AIR COMPRESSOR:** Always disconnect the air compressor from the mains power supply and decompress before performing maintenance, changing any parts and when not in use.

**DO NOT ABUSE THE CABLE:** Never pull on the cable when removing the plug from the mains socket, or lift the compressor by the mains cable.

**BREATHING QUALITY AIR:** This compressor should not be used to supply breathing quality air.

**DO NOT ABUSE THE COMPRESSOR:** Do not stand on the compressor.

**SAFETY VALVE:** Never remove or attempt to adjust the safety valve. Keep the safety valve free from paint and other accumulations.

**AVOID UNINTENTIONAL STARTING:** Do not move the air compressor when it is connected to the mains power supply. When connecting the air compressor to the mains supply make sure the red button on top of the air compressor is in the **OFF** (down) position.

**STORE THE AIR COMPRESSOR PROPERLY:** When not in use the air compressor should be stored in a secure, dry place out of the reach of children. Always lock up the storage area.

**PROTECT YOUR HEARING:** Ear protection should be worn when operating this compressor.

**MAINTAIN THE AIR COMPRESSOR WITH CARE:** If the air compressor is damaged in any way, have it repaired by a qualified service engineer.

**EXTENSION LEAD:** Only use extension leads that are of an appropriate power rating and suitable for the work environment. Extension leads must have an earth connection. Inspect the extension lead regularly and replace if damaged.

# SAFETY PRECAUTIONS

**ONLY USE PARTS AND ACCESSORIES RECOMMENDED IN THIS MANUAL:** The use of unauthorised accessories or attachments is not permitted and may result in personal injury and damage to the air compressor. Do not attempt to repair or modify the air compressor.

**STAY ALERT:** Watch what you are doing, use common sense, and do not operate the air compressor when you are tired. The air compressor should not be used if you are under the influence of alcohol, drugs or any medication that makes you drowsy.

**BEFORE EACH USE CHECK THE AIR COMPRESSOR AND HOSE FOR DAMAGED PARTS:** Never use the air compressor if it has been damaged in any way. Have the air compressor repaired by a qualified service engineer. Do not use the air compressor if the On/Off switch does not operate correctly.

**HANDLE THE AIR COMPRESSOR CAREFULLY:** Operate the air compressor according to the instructions contained within this instruction booklet. This air compressor should never be operated by children or individuals unfamiliar with its operation.

**KEEP THE MOTOR AIR VENT CLEAR:** Keep the motor vent clear and free from dust, wipe regularly to maintain an adequate supply of clean air to the air compressor.

**OPERATE THE AIR COMPRESSOR AT THE CORRECT VOLTAGE:** Make sure that the mains supply voltage is the same as the voltage shown on the rating plate.

**DO NOT WIPE THE PLASTIC PARTS WITH SOLVENT:** Do not use solvents or thinners such as petrol, benzene, carbon tetrachloride or alcohol to clean the air compressor, as these chemicals will damage the finish. With the air compressor unplugged from the supply, use a dry cloth to wipe over the plastic casing.

**KEEP ALL SCREWS AND COVERS TIGHTLY IN PLACE:** Check the screws and covers periodically.

**ADEQUATE VENTILATION:** The compressor should only be used in areas with adequate ventilation and should not be exposed to heat, or used near inflammable substances.

**NEVER USE AN AIR COMPRESSOR WHICH APPEARS DEFECTIVE OR IS OPERATING ABNORMALLY:** If the compressor operates unusually or makes strange noises, switch off immediately and purge the air tank. Arrange repair with an authorised service centre.

**DO NOT MODIFY THE AIR COMPRESSOR:** Do not attempt to modify the air compressor, tank, fittings or attachments in any way. Doing so will invalidate the guarantee and could result in personal injury.

**DO NOT MODIFY THE TANK:** Do not modify the tank or operate at pressures or temperatures outside the limits stated in this booklet.

**TURN OFF THE AIR COMPRESSOR WHEN NOT IN USE:** When not in use, turn off the air compressor by pressing the On/Off switch, remove the plug from the mains supply and slowly undo the drain valve to release the pressure from the tank. Remember to close the drain valve before storage and ensure it is fully tightened before use.

**DO NOT TOUCH HOT SURFACES:** During operation, the motor, connections, compressor body, cylinder head and tubes may get hot, please take care.

# SAFETY PRECAUTIONS

**DO NOT DIRECT THE AIR STREAM AT THE BODY:** Do not direct the air stream at people or animals, as injury may result. Compressed air can cause soft tissue damage and propel dirt and other particles at high speed.

**ONLY USE RECOMMENDED PARTS:** To avoid the risk of bursting, only hoses with a rated pressure of 8 bar, or more should be used. Never attempt to repair faulty hoses.

**DO NOT USE THIS COMPRESSOR TO INFLATE SMALL, LOW-PRESSURE OBJECTS:** Items such as children's toys or footballs can explode if over-inflated.

**AVOID KINKING OR TRAPPING THE AIR HOSE:** Always replace faulty hoses - never attempt a repair if a leak is detected.

**DRAIN TANK:** Drain the tank after each use. Switch off and slowly open the drain valve to release the air then tilt the compressor to empty condensed water.

**NEVER STOP THE COMPRESSOR BY REMOVING THE PLUG OR SWITCHING OFF AT THE MAINS SUPPLY:** Always use the On/Off switch on the compressor.

**NEVER OPERATE WITHOUT ALL GUARDS IN PLACE:** Never operate without all guards or safety features in place and in proper working order.

**NEVER OPERATE IN THE PRESENCE OF FLAMMABLE LIQUIDS OR GASES:** The air compressor produces sparks during operation.

**CHECK FOR DAMAGED PARTS AND AIR LEAKS:** If any part of the compressor is damaged, it should be carefully checked to determine that it will operate correctly and perform its intended function. Check for the alignment of parts, damage to parts, air leaks and any other conditions that may affect its operation. A guard or any other part that is damaged or defective should be properly repaired or replaced by an authorised service centre. Defective pressure switches must be replaced prior to further use of the compressor.

**ONLY USE WITHIN THE RECOMMENDED OPERATING TEMPERATURE RANGE:** This compressor should only be used in an ambient temperature of between 0°C and 25°C.

**CLEANING AND CONDITION OF THE COMPRESSOR:** Keep the external surfaces of the tank clean. Avoid impact damage and do not allow the tank to come into contact with abrasive or corrosive materials.

**MOVING THE COMPRESSOR:** Always transport the compressor by lifting or pulling it with the appropriate grips or handles.

## USING THE COMPRESSOR FOR PAINTING:

- Do not work in enclosed areas or near naked flames.
- Make sure that the area in which you are working has good ventilation.
- Protect your nose and mouth with a suitable face mask.
- Always check the safety data sheets for substances being sprayed & ensure manufacturers instructions are followed.

**MOTOR HOUSING:** Do not insert your fingers or other objects inside the motor housing to avoid physical damage or damage to the compressor.

## WARNING SYMBOLS



**READ THIS INSTRUCTION BOOKLET CAREFULLY BEFORE POSITIONING, OPERATING OR ADJUSTING THE COMPRESSOR.**



**Risk of electric shock. The compressor must be disconnected from the mains supply before removing any covers. Do not use in a damp environment.**



**Risk of accidental start-up. The compressor could start automatically in the event of a power cut and subsequent reset. Do not carry the compressor while it is connected to the power source, or when the tank is filled with compressed air.**



**This compressor contains surfaces which may reach a high temperature during operation. Never operate with the motor housing removed.**



**Air and condensation water can burst from the compressor when the drain plug is removed.**



**Wear a safety goggles and ear protectors when using this compressor**



L<sub>WA</sub>

**This compressor produces a high sound level during operation. Ear protection should be worn.**

**94<sub>dB</sub>**

## ELECTRICAL CONNECTIONS

Connect the mains lead to a 230 Volt (50Hz) single phase 30 amp electrical supply, through a suitably fused isolator with a fuse rating of 20 Amps.

**DO NOT connect to a domestic system via a 13 AMP plug.**

***WARNING! THIS APPLIANCE MUST BE EARTHED***

**IMPORTANT:** The wires in the mains lead are coloured in accordance with the following code:

Green & Yellow	-	Earth
Blue	-	Neutral
Brown	-	Live

As the colours of the flexible lead of this appliance may not correspond with the coloured markings identifying terminals in your plug proceed as follows:

- The wire which is coloured green and yellow must be connected to the terminal which is marked with the letter E or by the earth Symbol ( $\perp$ ) or coloured green or green and yellow.
- The wire which is coloured blue must be connected to the terminal which is marked with the letter N or coloured black.
- The wire which is coloured brown must be connected to the terminal which is marked with the letter L or coloured red.

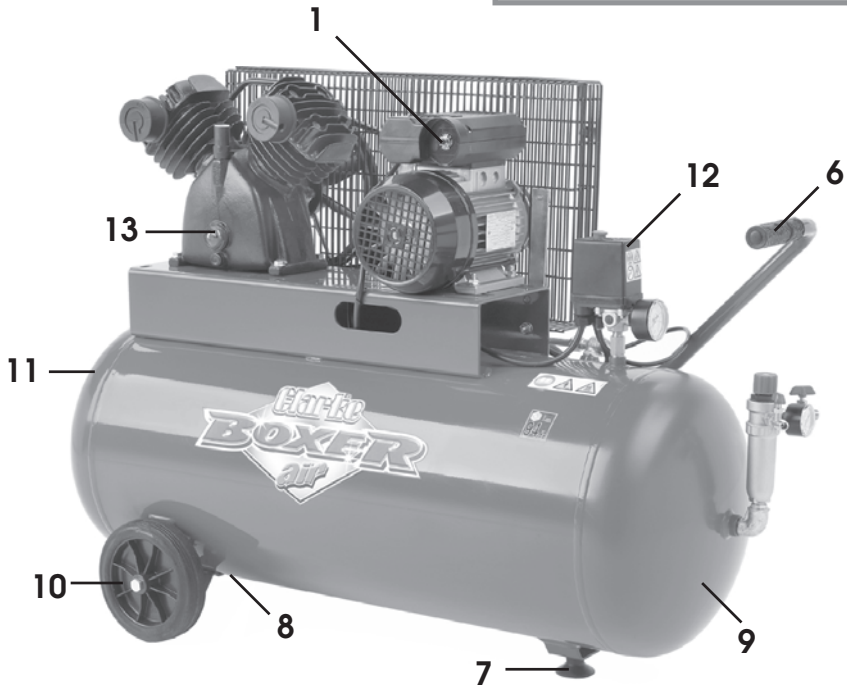
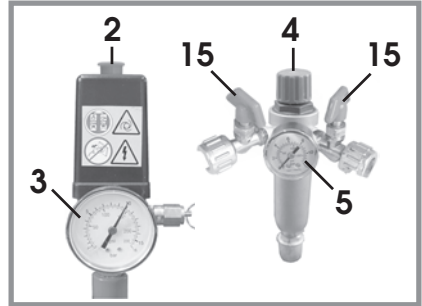
**We recommend that this machine is connected to the mains supply via a Residual Current Device (RCD)**

If in any doubt, DO NOT attempt any connections or repairs yourself. Consult a qualified electrician, your local Clarke dealer or Clarke International on:

**020 8988 7400 or e-mail [Service@clarkeinternational.com](mailto:Service@clarkeinternational.com)**



# PARTS IDENTIFICATION



- |   |                            |    |                                |
|---|----------------------------|----|--------------------------------|
| 1 | Reset Button               | 8  | Drain valve                    |
| 2 | On/Off switch (red button) | 9  | Compressed air reservoir       |
| 3 | Reservoir pressure gauge   | 10 | Transportation wheel           |
| 4 | Output pressure regulator  | 11 | Data Plate                     |
| 5 | Output pressure gauge      | 12 | Pressure regulator and cut-out |
| 6 | Handle                     | 13 | Oil level indicator            |
| 7 | Support foot               | 14 | Outlet tap                     |

## ASSEMBLY

### WARNING!

*Before assembling and using the air compressor, make sure that you have read and understood all of the safety instructions.*

### Installation

Take care when lifting the compressor from the packaging.

**CAUTION! Do not lift the compressor by the Pressure regulator and cut-out. Get assistance if necessary. This unit weighs 71 kg.**

After removing the compressor from its packaging, make sure it has not been damaged in transit.

### Positioning the air compressor

This compressor should be positioned on a stable, flat surface (or one with a maximum inclination of  $15^\circ$ ), See figure 1, and ensure it is completely stable.

Do not cover or box in the compressor. Always position it at least 50cm from any obstacle or wall

Make sure the compressor has good all round ventilation.

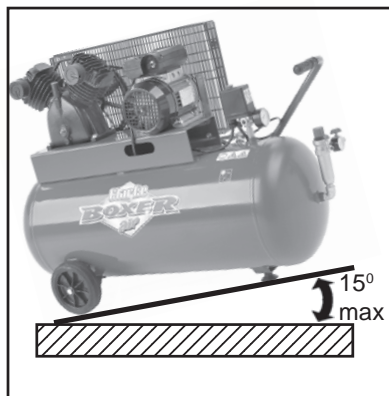


Figure 1

# ASSEMBLY

## Moving the air compressor

Before moving the compressor, switch off and disconnect it from the mains power supply.

- Always use the handle.
- Do not lift by (or put strain on) fittings, valves or hoses.
- Take care when moving the compressor to avoid damaging the valves or fittings.

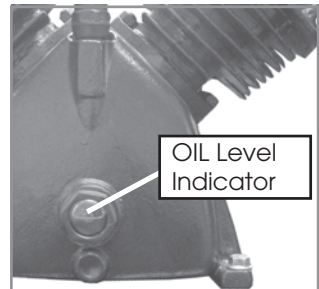
The compressor is heavy, get assistance when lifting and moving this compressor to avoid personal injury.

## PREPARING FOR USE

Before connecting your compressor to the mains supply,

### Check the Oil

1. Make sure that the oil level is within the small circle on the oil level indicator. See figure 2.
  - If needed top up the reservoir with Clarke SAE 30 compressor oil, available from your Clarke dealer.



*Figure 2*

## PREPARING FOR USE

Before connecting your compressor to the mains supply, check the following:-

- The mains voltage is 230V.
- The ON/OFF switch is in the OFF (lower) position.
- The pressure regulator should be set at its lowest setting, i.e. turned fully anticlockwise.
- If the compressor has not been used for 24 hours or so, open the drain valve to drain any condensate which may have accumulated. When clear, close the drain valve, finger tight.

**IMPORTANT: If the air reservoir is under pressure, keep your hands well away from the air being expelled.... remember, compressed air is DANGEROUS!**

### WARNING!

**Before connecting any air tool, make sure you have read and fully understood the manufacturers instruction booklet for the tool being used. Also ensure that the tool is compatible with the compressor and hose specifications. The pressure regulator must be used to adjust the output pressure.**

1. Ensure that the red On/Off switch is set to the OFF position (pressed down). See figure 4.
2. Insert the mains plug into the mains socket and switch on the power.
3. Pull up the red ON/OFF switch up and run the compressor (with the outlet tap open) for 10 to 15 seconds, to allow the distribution of the lubricating oil.
4. Attach the air hose to one of the outlet taps using the hose nuts. See figure 5.

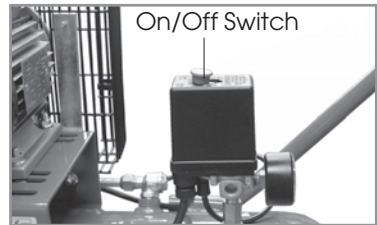


Figure 4

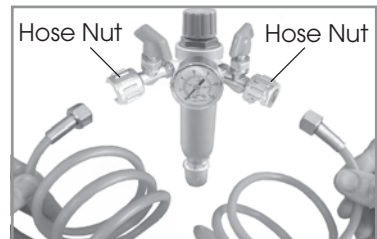


Figure 5

# OPERATING INSTRUCTIONS

## Switching the air compressor ON

**The compressor will make a continuous loud noise when the tank is charging - this is normal.**

- 1 Lift the red On/Off switch located on top of the pressure regulator and cut-out.
  - The compressor will charge the main tank to 10 bar (145 psi) then switch off.
  - The compressor will restart automatically whenever the pressure in the main tank falls below a certain level.
- 2 Check the operation of the safety valve, under pressure, daily by pulling the ring as shown in figure 6. Air should be released you pull the ring and stop when the ring is released.
  - If the valve does not operate as described, or if the valve is stuck, it must be replaced by qualified service personnel before using the compressor.

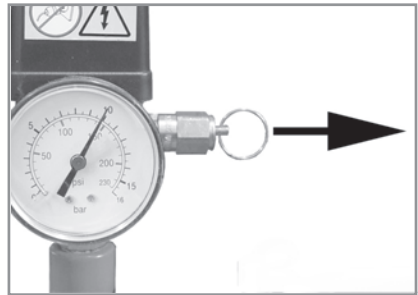


Figure 6

### **WARNING!**

**Do not remove or attempt to adjust the safety valve.**

- 3 Select the pressure you need using the pressure regulator. See figure 7.
- 4 Open the outlet tap.

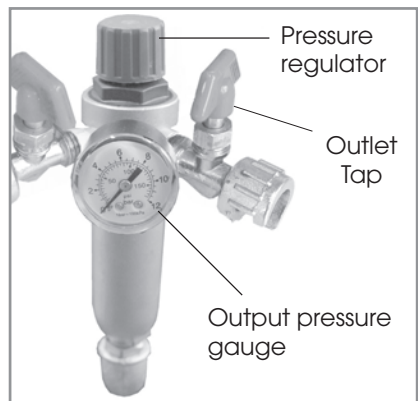


Figure 7

# OPERATING INSTRUCTIONS

## Switching the air compressor off

To switch the air compressor off,

1. Close the outlet tap and press down on the on/off button (red button) located on top of the pressure regulator and cut-out.
2. Switch off the mains supply and remove the plug.
  - You should never leave the compressor air tank unattended while under pressure.
  - Always release the pressure from the tank when not in use or prior to storage, as described in 'Draining the reservoir' on page 15.

## Removing a tool from the air hose

### **WARNING!**

***Always set the pressure regulator to zero before attempting to remove or replace a tool.***

1. Stop the power supply by pressing down on the on/off button (red button) located on top of the pressure regulator and cut-out.
2. Close the air outlet tap and trigger the equipment (spraygun, air tool etc), to release air from the air hose BEFORE disconnecting the hose from the machine.

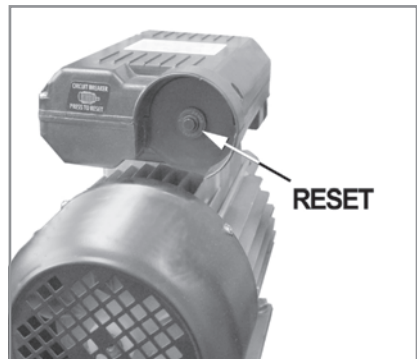
## Reset button

This compressor is equipped with a thermal overload device, which operates as a safety device to protect the motor.

When the motor overheats for any reason, the overload cutout automatically cuts the power thereby preventing damage to the motor.

Wait around 5 minutes for the motor to cool and press the reset button. See figure 8.

If you restart the compressor and the overload cutout activates again, switch off the compressor, remove the plug from the mains and have your compressor checked by a qualified service agent.



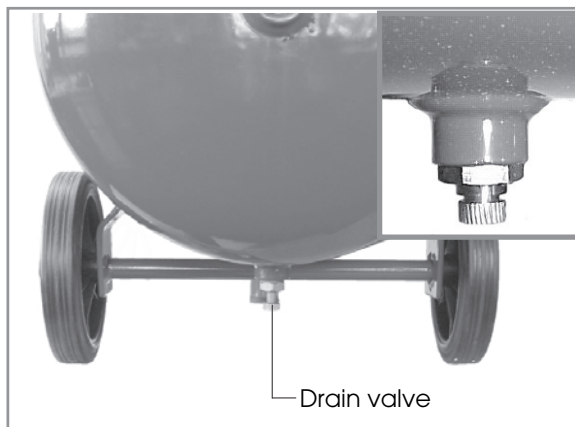
*Figure 8*

# OPERATING INSTRUCTIONS

## Draining the reservoir

**CAUTION! It is important to drain the reservoir before storage.**

- 1 Pressing the red On/Off button down to switch the air compressor off and remove the plug from the mains supply.
  - Place a suitable container beneath the compressor to catch any condensation.
- 2 Carefully undo the drain valve anticlockwise until you hear a hissing noise, this is the reservoir depressurising. See figure 9.
  - When the reservoir pressure gauge indicates zero and the hissing has stopped, tighten the drain valve again.



*Figure 9*

# ROUTINE MAINTENANCE

**IMPORTANT:** Before carrying out any maintenance work, always disconnect the compressor from the mains supply, drain the air receiver and, if necessary, allow the machine to cool down before starting work.

## Daily

### Check Oil

Ensure the oil level is between the min and max marks on the dipstick. See page 12 and top-up if necessary - (use Clarke SAE 30 compressor oil, available from your local dealer).

### Drain the tank

After use, always open the drain valve to ensure that any liquid that may have condensed, is drained off. See page 15.

## Monthly

The air intake filter should be inspected on a **MONTHLY** basis, and more often in dusty conditions,

### To clean the air intake filter,

- 1 Pull the filter cover away from the compressor as shown. See figure 10.
- 2 Remove the sponge filter from the filter cover. See figure 11.
- 3 Clean the sponge and the filter cover using a soft brush.
  - If necessary, the sponge filter may be gently washed in warm soapy water,
  - Rinse and allow the filter to dry thoroughly before refitting.
- 5 Ensure that the filter and filter cover is then placed back into its original position.
  - If any part of the filter is damaged, you should obtain a replacement.



Figure 10



Figure 11



# ROUTINE MAINTENANCE

## Every six months

Make sure that all bolts are securely tightened.

Clean all the external parts of the compressor.

### Oil

After the first 100 hours use, replace the oil completely using Clarke SAE30 compressor oil. Then replace the oil after every 500 hours of operation or every 6 months.

To empty the oil from the machine, remove the oil drain plug from the crankcase cover.

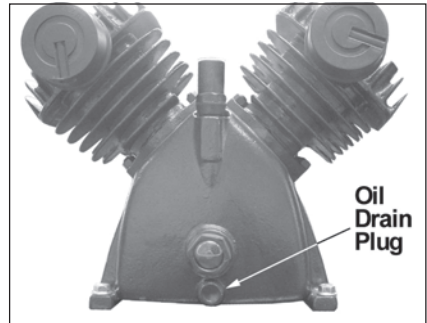


Figure 12

### Non Return Valve

Examine the non-return valve, and replace the gasket and valve if necessary

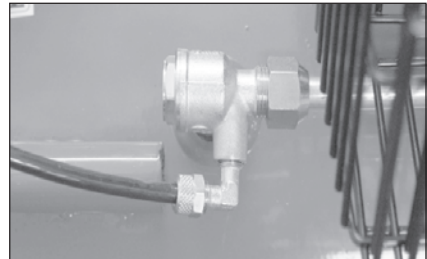


Figure 13

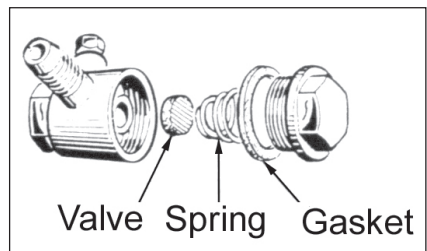


Figure 14

# ROUTINE MAINTENANCE

## Replacing the drive belt

- 1 Rotate the clips on the front of the safety cage. Remove the front of the cage and take out the worn or broken drive belt.

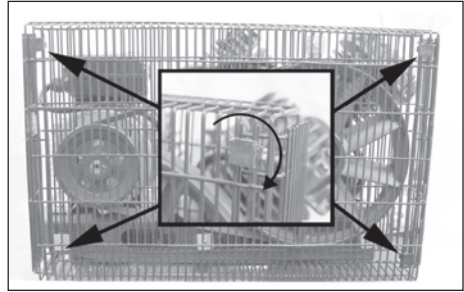


Figure 15

- 2 Place the replacement drive belt over the small wheel. See figure 16.

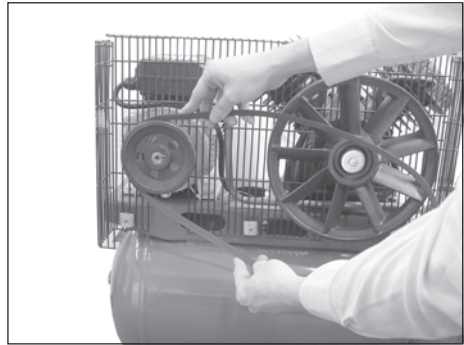


Figure 16

3. Position part of the drive belt over the large belt wheel as shown in figure 17.
4. Rotate the large belt wheel by hand in a anticlockwise direction whilst guiding the belt on to the belt wheel.



Figure 17

## TROUBLE SHOOTING

With considerate use, your Clarke BOXER 100 Air Compressor should provide you with long and trouble free service. Routine checks should be made on both the electrical supply as well as on all the compressed air lines and connections. If any fault appears, the reason for which is not immediately obvious, we recommend that you contact your local Clarke dealer.

Fault	Cause	Remedy
The compressor stopped and does not start.	Bad connections.	Check electrical connections. Clean and tighten as necessary.
	Overload cutout switch has tripped or duty cycle has been exceeded.	Switch off and wait approx 5 minutes before pressing the reset button and switching on again.
	Motor windings burnt out.	Contact your local Clarke dealer for a replacement motor.
The compressor does not reach the set pressure and overheats easily.	Compressor head gasket blown or valve broken.	Wait for compressor to cool down, disassemble head and replace any broken components. Carefully clean all sealing surfaces before reassembling. If in doubt contact your Clarke dealer.
Compressor does not start.	Air receiver charged	Open drain valve to expel air. Compressor should start again when pressure reduces to approx. 95 psi.
Air leaking from the pressure switch valve when the compressor is not running.	Faulty non-return valve.	First drain receiver completely of air. Remove the valve end plug, carefully clean the valve seat and the gasket and reassemble. See Figure 14.
Air pressure from the regulator will not adjust.	The diaphragm within the regulator body is broken.	Replace regulator
The compressor is very noisy and makes a metallic knocking sound.	Compressor damaged and needs overhaul.	Return the machine to your nearest service agent.

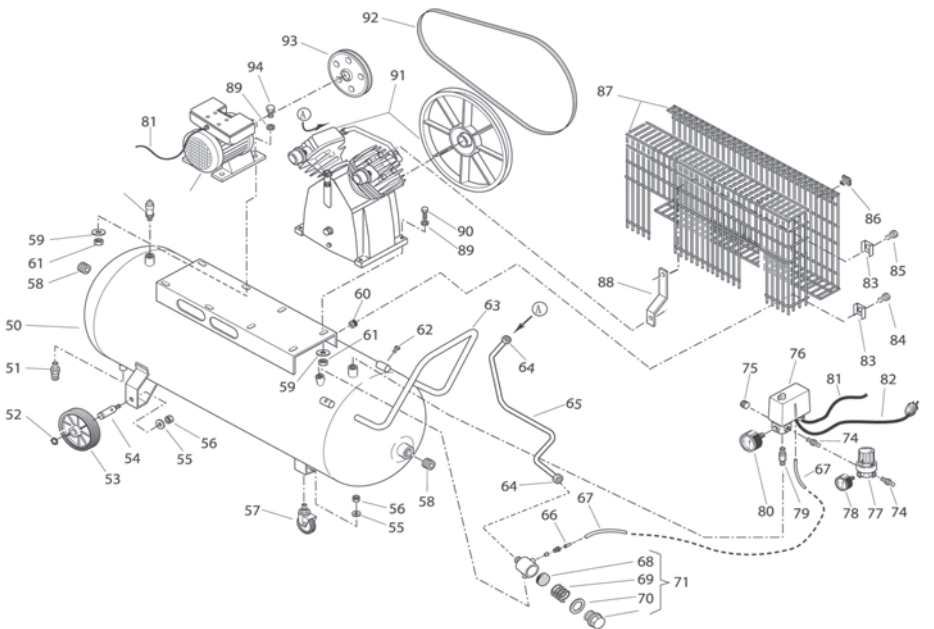
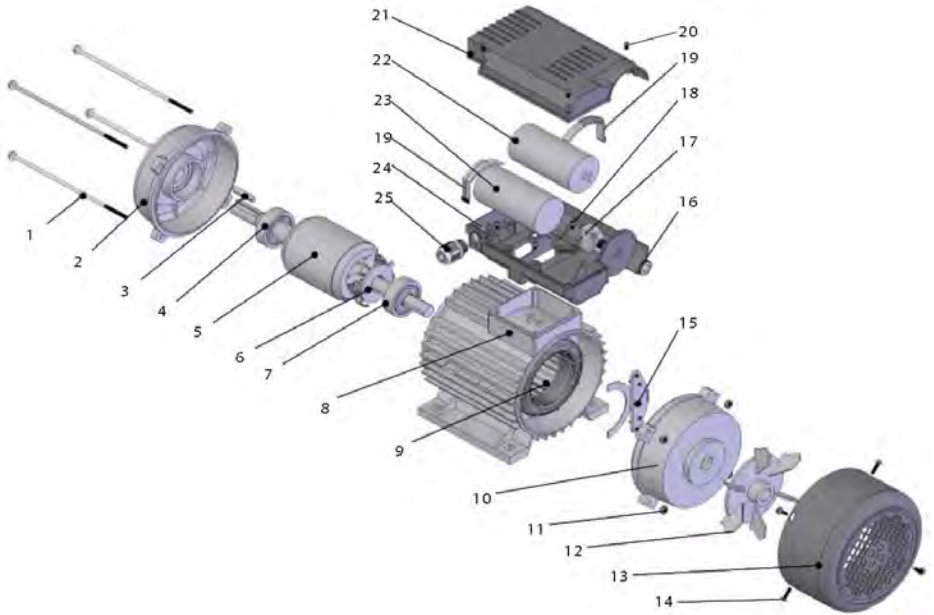
**CAUTION** Do not attempt any repair or adjustment if you are uncertain as to how it should be done. If you have any queries, contact your local Clarke Dealer.

## SPECIFICATIONS

Electrical Supply .....	230 V, 1 Phase 50Hz
Max. Operating Pressure .....	10 bar / 145 psi
Motor Rating .....	3 HP
Air Displacement .....	12.2 cuft/min
Air Receiver .....	100 litre
Net Weight .....	71kg
Dimensions ( L x W x H ) .....	1220 x 460 x 810 mm
Duty Cycle .....	S1 (continuous)
Part No. ....	2225460

**Please note that the details and specifications contained herein, are correct at the time of going to print. However, we reserve the right to change specifications at any time without prior notice. Always consult the machine's data plate**

# PARTS DIAGRAM



## PARTS LIST

NO.	DESCRIPTION	PART NO.	NO.	DESCRIPTION	PART NO.
1	BOLT	FN140021300	60	SPACER	FN199763000
2	FRONT SHIELD	FN025046000	61	NUT	FN014003001
3	KEY	FN018035000	62	SCREW	FN014001049
4	BEARING	FN033154000	63	HANDLE	FN199426000
5	ROTOR WITH SHAFT	FN034143000	64	LOCKNUT	FN199437000
6	SWITCH ROTARY PART	FN199001004	65	DELIVERY PIPE	FN113175009
7	BEARING	FN161165407	66	COMPASS	FN011304000
8	CASE	FN140100010	67	RILSAN TUBE	FN0460001000
9	STATOR WITH WINDING	FN031134000	68	SEAL	FN047113001
10	REAR SHIELD	FN025048000	69	TAPERED SPRING	FN047113002
11	NUT & WASHER	FN014003003	70	O-RING	FN010041000
12	FAN	FN024085000	71	CHECK VALVE	FN347043000
13	FAN COVER	FN025051000	72	MOTOR 230V~240V/50HZ	FN540E001604
14	SCREW & WASHER	FN014001102	73	SAFETY VALVE	FN048208000
15	SWITCH FIX PART	FN199001005	74	NIPPLE	FN011017000
16	PROTECTOR NUT	FN014004017	75	PLUG	FN011018000
17	PROTECTOR	FN008423000	76	PRESSURE SWITCH	FN321028000
18	SCREW & WASHER	FN014013007	77	PRESSURE REDUCER	FN319047000
19	CAPACITOR HOLDER	FN015143000	78	SMALL GAUGE	FN330006000
20	SCREW & WASHER	FN014012130	79	NIPPLE	FN199110140
21	TERMINAL BOX TOP PART	FN026049000	80	BIG GAUGE	FN330007000
22	RUNNING CAPACITOR	FN009200087	81	MOTOR CABLE	FN161CU0007
23	STARTING CAPACITOR	FN009200091	82	POWER CABLE	FN117HA0203
24	TERMINAL BOX BOTTOM PART	FN026051000	83	SQUARE WASHER	FN014005007
25	CABLE GLAND	FN026093000	84	SCREW	FN014013045
50	TANK	FN172058002	85	TAPPING SCREW	FN014013042
51	DRAIN VALVE	FN022021000	86	PLASTIC DOWEL FOR BELT	GUARD
52	CIRCLIP	FN015005000			FN020025000
53	WHEEL	FN020002001	87	BELT GUARD	FN199688001
54	WHEEL SPINDLE	FN199422000	88	GUARD SUPPORT	FN113172010
55	WASHER	FN014005009	89	WASHER	FN014005002
56	NUT	FN014003006	90	SCREW	FN014001047
57	FREE WHEEL	FN020008000	91	SKM12S PUMP	FN5131810000
58	PLUG	FN011008000	92	BELT	FN045082000
59	WASHER	FN014005010	93	PULLEY	FN140055004
			94	SCREW	FN014001042

## SPARE PARTS AND SERVICE

For spare parts and service, please contact your nearest dealer, or Clarke International, on one of the following numbers.

**PARTS & SERVICE TEL.: 020 8988 7400**

**PARTS & SERVICE FAX: 020 8558 3622**

**or e-mail as follows:**

**PARTS: [parts@clarkeinternational.com](mailto:parts@clarkeinternational.com)**

**SERVICE: [service@clarkeinternational.com](mailto:service@clarkeinternational.com)**

# Clarke® INTERNATIONAL

**This is an important document, and should be retained.**

## DECLARATION OF CONFORMITY

We declare that this product complies with the following standards/directives

- 98/38/EC
- 87/404/EC
- 2000/14/EC ANNEX VI PROCEDURE 1

Notified Body: ISET S.r.l. (No. 0865).

Place: Via Ciro Menotti, 10  
41033 CONCORDIA (MO) Italy

Tech. File held at: Clarke Int'l Service Centre,  
Shrubland Rd., London E10 7RB

Model No.	Measured Sound Power Level	Guaranteed Sound Power Level
BOXER 100	94dBL <sub>WA</sub>	95dBL <sub>WA</sub>

Product Description: AIR COMPRESSOR

Model Number: BOXER 100

Serial (Batch) No: SEE PRODUCT DATA PLATE

Signed



D. Kemp. Engineering Manager

Date: 28 March, 2007

# Clarke® INTERNATIONAL

Hemnal Street, Epping, Essex CM16 4LG

Clarke International is a trading style of Clarke International Limited

# A SELECTION FROM THE VAST RANGE OF

# Clarke®

## QUALITY PRODUCTS

### AIR COMPRESSORS

From DIY to industrial, Plus air tools, spray guns and accessories.

### GENERATORS

Prime duty or emergency standby for business, home and leisure.

### POWER WASHERS

Hot and cold, electric and engine driven - we have what you need

### WELDERS

Mig, Arc, Tig and Spot. From DIY to auto/industrial.

### METALWORKING

Drills, grinders and saws for DIY and professional use.

### WOODWORKING

Saws, sanders, lathes, mortisers and dust extraction.

### HYDRAULICS

Cranes, body repair kits, transmission jacks for all types of workshop use.

### WATER PUMPS

Submersible, electric and engine driven for DIY, agriculture and industry.

### POWERTOOLS

Angle grinders, cordless drill sets, saws and sanders..

### STARTERS/CHARGERS

All sizes for car and commercial use.



**PARTS & SERVICE: 0208 988 7400**

**E-mail: [Parts@clarkeinternational.com](mailto:Parts@clarkeinternational.com) or [Service@clarkeinternational.com](mailto:Service@clarkeinternational.com)**

**SALES: UK 01992 565333 or Export 00 44 (0)1992 565335**

**Clarke®** INTERNATIONAL Hemnall Street, Epping, Essex CM16 4LG  
[www.clarkeinternational.com](http://www.clarkeinternational.com)