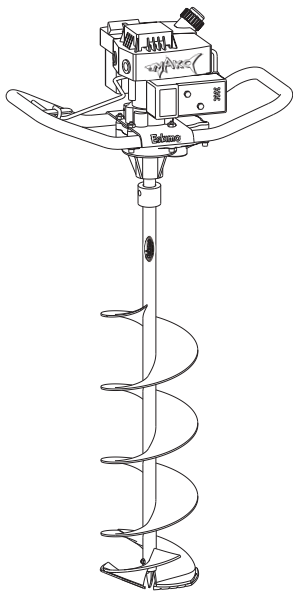




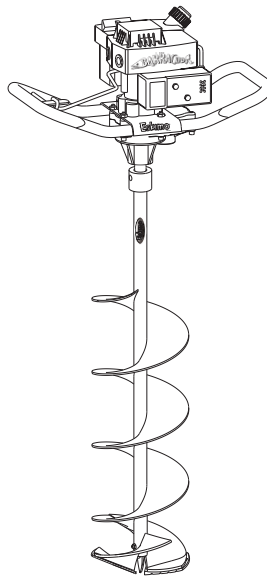
Power Ice Auger Operator's Manual

Mako™



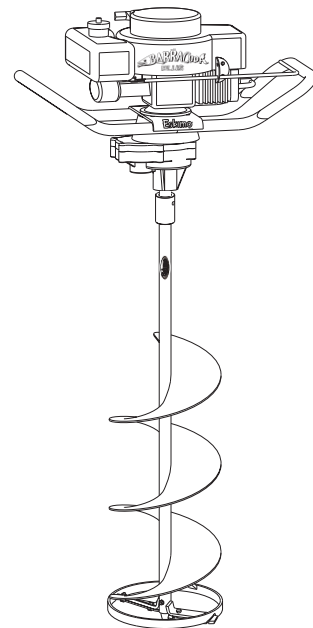
Models
2003M
2003M8
2003MQ8
2003MQ9
2003M10

Barracuda™



Models
8903B
893B8
893BQ8
893BQ9
893B10

Barracuda™
Plus



Models
9003B
9003B8
9003BQ8
9003BQ9
9003B10

OM2003M-04
Rev. 08/03

© Copyright 2003 Ardisam, Inc.
All Rights Reserved. Printed in USA.



MAKO, BARRACUDA & BARRACUDA PLUS INSTRUCTIONS

REGISTRATION AND WARRANTY

THANK YOU . . .

for purchasing an Eskimo Ice Auger from Ardisam, Inc. We have worked to ensure that it meets high standards for usability and durability. With proper care, your auger will provide many years of service. Please take the time to read this manual carefully to learn how to correctly operate and maintain your auger. Congratulations on your investment in quality.

CONTENTS

Registration/Warranty	3
Safety	4
Operation	5-6
Maintenance & Storage	7
Service, Troubleshooting, and Repair	8-15

REGISTRATION

Your auger has a serial number decal located on the opposite side of engine gas tank. Engine serial number is located directly above spark plug. Write these numbers and the model number in the space provided. You will need these numbers if you order parts. Fill out and mail the registration card located in your parts packet. Warranty is valid only if your completed registration card is received by Ardisam, Inc., at time of purchase.

Model Number _____

Serial Number _____

Engine Serial Number _____

Date of Purchase _____

Place of Purchase _____

SAFETY

OWNER'S RESPONSIBILITY


Accurate assembly and safe and effective use of the auger is the owner's responsibility.

1. Read and follow all safety instructions.
2. Carefully follow all assembly instructions.
3. Maintain the auger according to directions and schedule included.
4. Ensure that anyone who uses the auger is familiar with all controls and safety precautions.

CAUTIONS AND IMPORTANT NOTES

Two symbols which draw attention to information of special interest appear throughout this manual. These comments range in importance from helpful hints to warnings about risk of personal injury. Please take the time to read and understand them.

 CAUTION
Indicates a situation which may cause personal injury or damage to the auger or property.

 IMPORTANT
Provides helpful information for proper assembly, operation, or maintenance of your auger.

IMPORTANT SAFETY PRECAUTIONS

Please read this section carefully. Operate the auger according to the safety instructions and recommendations outlined here and inserted throughout the text. Make sure anyone who uses the auger has read the instructions and is familiar with the controls.

CALIFORNIA PROPOSITION 65 WARNING

Engine exhaust from this product contains chemicals known to the State of California to cause cancer, birth defects, or other reproductive harm.



This symbol points out important safety instructions which if not followed could endanger your personal safety. Read and follow all instructions in this manual and any others provided with this equipment.

1. The ice blade is very sharp. Use extreme caution when drilling a hole, replacing the blade or blade guard.
2. Do not carry the auger powerhead between holes with the engine running.
3. The auger should not rotate when the engine is idling. If it does rotate when engine is idling, contact Ardisam, Inc. for instructions.
4. Always keep hands, feet, hair and loose clothing away from any moving parts on engine and auger.
5. Do not allow children to operate this power auger. Do not allow adults to operate the auger without proper instruction.
6. Do not operate any power equipment under the influence of alcohol or drugs.
7. Keep all screws, nuts and bolts tight.
8. Engine should be shut off before any repairs are attempted.
9. Temperature of muffler and nearby areas may exceed 150° F (65° C). Avoid these areas.
10. Never run engine indoors or in enclosed, poorly ventilated areas. Engine exhaust contains carbon monoxide, an odorless and deadly gas.

OPERATION

OPERATION



CAUTION

Please do not start your auger until you have read the Engine Manual that came with your engine, and the section in this manual titled Safety. If you have read these, follow the steps below to start your auger. Always perform this pre-start checklist before starting the engine.

1. Read engine operating manual and follow instructions for fuel type, starting, etc. **BE SURE TO USE PROPER GAS/OIL MIXTURE.**

2. The clutch will transfer maximum power after about two hours of normal operation. During this break-in period clutch slippage may occur. The clutch should be kept free of oil or other moisture for efficient operation.
3. Dig holes without placing excessive body weight on the unit. The auger operates most efficiently with a shaving action caused by the weight of the unit itself.
4. Never run engine indoors. Exhaust fumes are deadly.
5. Do not use an ice auger in earth.
6. The ice auger blade protector should be attached to the auger head when not in use. This will protect the cutting edge of the ice auger blade.

FUEL MIXTURE



CAUTION

Never fill fuel tank indoors. Never add gas when engine is running or hot from operation. Do not smoke when filling fuel tank.



IMPORTANT

This engine uses a gas/oil mixture. DO NOT RUN ENGINE ON STRAIGHT GAS ONLY. ENGINE DAMAGE WILL RESULT!

1. Mix clean, fresh, lead-free gasoline (minimum of 77 octane) with a high quality 2 cycle engine oil at the ratio of 5 oz. oil to 1 gallon gasoline. (Refer to your engine manual for further information on fuel.)
2. Mix fuel in a 1 or 2 gallon container approved for gasoline.
3. Loosen fuel cap slowly. Rest the cap on a clean surface.
4. Carefully pour fuel into the tank. Avoid spillage.
5. Immediately replace fuel cap and hand tighten. Wipe up any fuel spillage.



MAKO, BARRACUDA & BARRACUDA PLUS INSTRUCTIONS

STARTING AND STOPPING

CAUTION

Do not hold throttle lever wide open while starting. Loss of control of auger could result.

1. Open gas cap vent if your engine is so equipped.
2. Flip the toggle switch to the **on** position.
3. Move choke lever to **full choke** position if engine is cold.

NOTE: 3-HP model may require use of primer button when cold, push a couple of times before starting.

4. Pull recoil starter until engine fires.
5. Move choke lever to **half choke** position (midway between off and full).
6. Pull recoil starter until engine runs.
7. Run engine 30 to 45 seconds at full throttle on **half choke** position until engine warms up.
8. Move choke lever to **off** position.

TO STOP: Flip the toggle switch to the **off** position.

MAINTENANCE AND STORAGE

CAUTION

To prevent accidental starting:
Engine must be turned off and cool, and spark plug wire must be removed from spark plug before checking and adjusting engine or equipment.

CAUTION

Temperature of muffler and nearby areas may exceed 150° F (65° C). Avoid these areas.

CAUTION

Check auger often for loose nuts and bolts. Keep these items tightened.

MAINTENANCE AND STORAGE SAFETY

1. Always allow muffler to cool before filling fuel tank.
2. When storing for over 1 month, use gas stabilizer in fuel.
3. Keep all screws, nuts, and bolts tight.
4. Close fuel shut-off valve located between gas tank and carburetor.
5. Do not fill gas tank indoors or when engine is running or is hot.
6. The gear case has 4 oz. of grease installed at the factory. It is recommended that once a year the gear case be split and the grease level checked. Add grease only if level of grease is below top of the gears. **DO NOT OVERFILL.**
7. For cold weather operation, store the unit in a cool environment. Transferring the unit from a warm to a cold place can cause the build up of harmful condensation.

ENGINE MAINTENANCE

CAUTION

Do not operate auger before reading the engine manual provided in the parts packet.

IMPORTANT

Engine can overheat and become damaged if debris blocks the cooling fins or recoil housing.

Refer to the engine manual included in your parts packet for information on engine maintenance. Your engine manual provides detailed information and a maintenance schedule for performing the following tasks:

1. Check air cleaner. See engine manual for instructions.
2. Keep engine and parts clean. See engine manual for instructions on cleaning recoil housing area, linkage, springs and controls, muffler area, cooling fins, and spark plug.



MAKO, BARRACUDA & BARRACUDA PLUS INSTRUCTIONS

STORAGE

CAUTION

Do not store auger in an unventilated area where fuel fumes may reach an open flame, spark or pilot light.

CAUTION

Drain fuel outdoors, away from any ignition sources. Use only approved fuel containers. Be sure engine is cool. Do not smoke.

Follow the steps below to prepare your auger for storage. Read your engine manual for detailed instructions on preparing the engine for storage.

1. Run with gas stabilizer in fuel. Screen in carburetor will glaze shut if gas stabilizer is not used before storage.
2. Drain the fuel tank. Run the engine until it stops.
3. Remove spark plug, pour one-half ounce of clean engine oil into cylinder. Pull starter handle slowly several times to distribute oil. Replace spark plug.
4. Clean entire auger.
5. Store your auger in a clean, dry building that is inaccessible to children.

SERVICE, TROUBLESHOOTING AND REPAIR

SERVICE INFORMATION

IMPORTANT

IN CASE OF A SERVICE PROBLEM, DO NOT SEND UNIT BACK TO RETAILER. CONTACT ARDISAM, INC. AT 1-800-345-6007.

At Ardisam, we build quality and durability into the design of our products; but no amount of careful design by us, and careful maintenance by you, can guarantee a repair-free life for your auger. Most repairs will be minor, and easily fixed by following the suggestions in the troubleshooting guide in this section.

The guide will help you pinpoint the causes of common problems and identify remedies.

For more complicated repairs, you may want to rely on your retailer or an authorized mechanic (contact your retailer for a list of authorized mechanics in your area). A parts catalog is included in this section.

We will always be glad to answer any questions you have, or help you find suitable assistance. To order parts or inquire about warranty, call or write us at the address found in the next column under the section ordering repair parts or check out our website - www.ardisam.com

ICE POINT REPLACEMENT

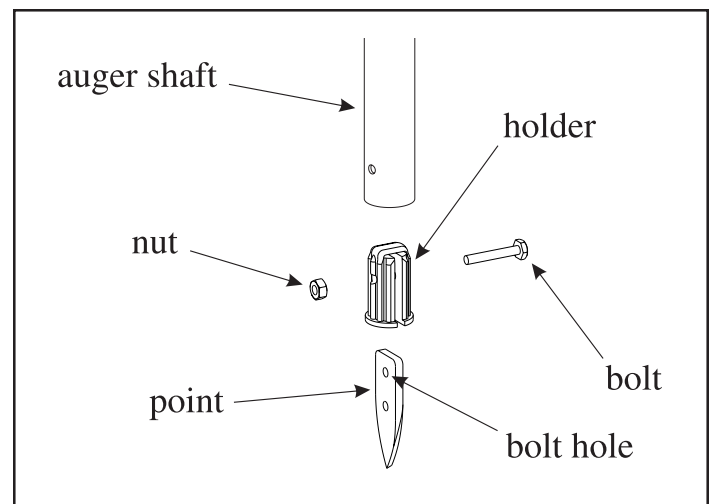
1. Remove both blades.
2. Remove nut and retaining bolt from point.
3. Using a locking pliers, grasp point and pull out. If holder doesn't come out with the point, remove with pliers.
4. With locking pliers, push in new point and holder aligning bolt hole in point with holes in auger shaft. **DO NOT DAMAGE END OF POINT.**

NOTE: When installing holder in auger shaft, edges of holder may shave off.

5. Insert retaining bolt and tighten with nut.

CAUTION

Auger blades and point are extremely sharp. Use caution when removing & replacing.





MAKO, BARRACUDA & BARRACUDA PLUS INSTRUCTIONS

ORDERING REPAIR PARTS

Parts can be obtained from the store where your auger was purchased or direct from the factory. To order from the factory, call or write to:



ARDISAM, INC.

1360 1st Avenue; P.O. Box 666
Cumberland, Wisconsin 54829
(715) 822-2415 Fax (715) 822-4180

1-800-3456-007

www.ardisam.com

Please include the following information with your order:

1. Part numbers
2. Part description
3. Quantity
4. Model number and serial number

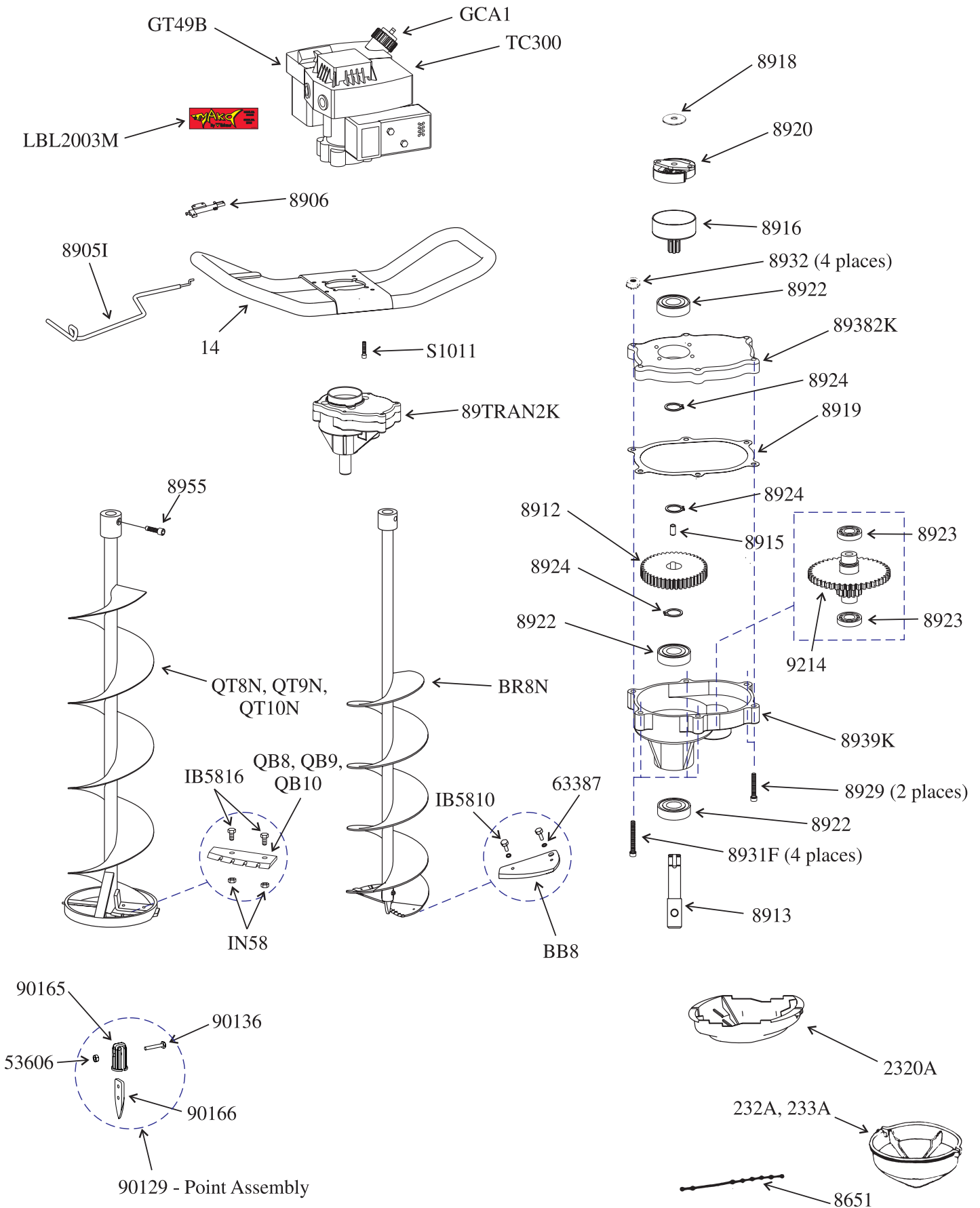


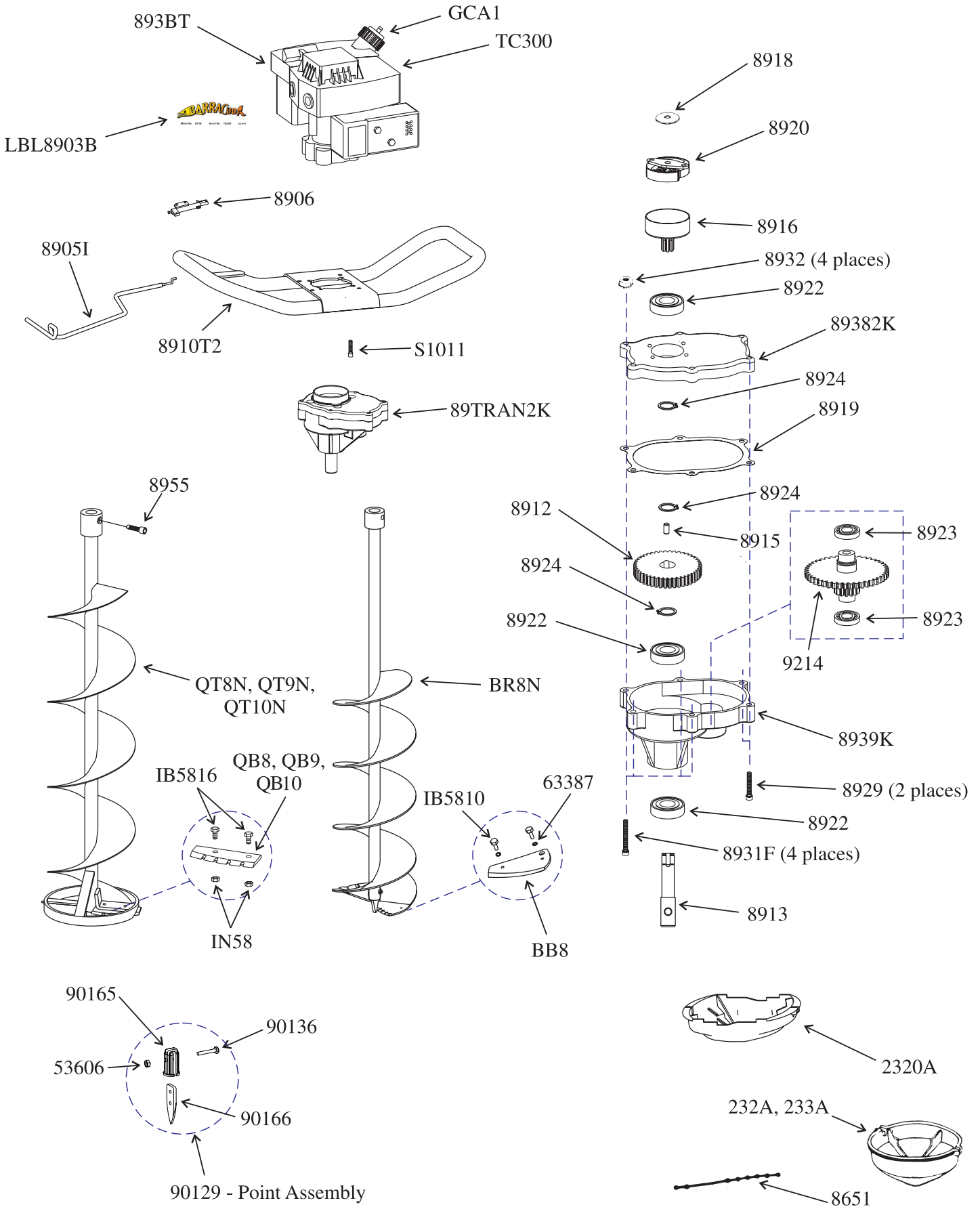
CAUTION

Practice safety at all times. Engine must be turned off and allowed to cool, and spark plug wire must be disconnected before attempting any maintenance or repair.

TROUBLESHOOTING

Problem	Possible cause	Remedy/Action
Engine will not start	<ol style="list-style-type: none"> 1. Power switch off 2. Spark plug wire disconnected 	<ol style="list-style-type: none"> 1. Flip switch to on position 2. Connect spark plug wire to spark plug
Engine runs rough, floods during operation	<ol style="list-style-type: none"> 1. Dirty air cleaner 2. Choke partially engaged 3. Carburetor out of adjustment 	<ol style="list-style-type: none"> 1. Clean or replace air cleaner 2. Turn off choke 3. Call factory
Engine is hard to start	<ol style="list-style-type: none"> 1. Stale fuel 2. Spark plug wire loose 3. Dirty carburetor 	<ol style="list-style-type: none"> 1. Drain old fuel and replace with fresh. Use gas stabilizer at end of season 2. Make sure spark wire is securely attached to spark plug 3. Clean carburetor, use gas stabilizer, new gas can
Engine misses or lacks power	<ol style="list-style-type: none"> 1. Clogged fuel tank 2. Clogged air cleaner 3. Improper carburetor adjustment 4. Spark plug dirty, improper gap, or wrong type 	<ol style="list-style-type: none"> 1. Remove and clean 2. Clean or replace 3. Call factory 4. Replace spark plug and adjust gap
Auger turns at idle	<ol style="list-style-type: none"> 1. Idle speed too high 2. Broken clutch spring 	<ol style="list-style-type: none"> 1. Adjust idle speed lower 2. Replace both springs
Auger turns, but has no power	<ol style="list-style-type: none"> 1. Choke on 2. Carburetor out of adjustment 3. Broken transmission 4. Worn clutch shoes 5. Worn engine lower seal 	<ol style="list-style-type: none"> 1. Turn off choke after engine is running 2. Call factory 3. Call factory 4. Replace clutch shoes and springs 5. Call factory
Auger jumps on ice	<ol style="list-style-type: none"> 1. Blades damaged or sharpened incorrectly 	<ol style="list-style-type: none"> 1. Buy new blades, or have blades sharpened at factory
Auger cuts slowly	<ol style="list-style-type: none"> 1. Dull blades 2. Damaged point 	<ol style="list-style-type: none"> 1. Buy new blades, or have blades sharpened at factory 2. File point
Engine runs, then quits	<ol style="list-style-type: none"> 1. Gas cap not venting 2. Screen in carburetor plugged 	<ol style="list-style-type: none"> 1. Check self venting gas cap 2. Clean screen, use gas stabilizer, clean gas can







MAKO & BARRACUDA PARTS LISTS

MINIMUM ORDER \$10.00

MAKO MODEL 2003M

Part #	Description	Qty.
14	HANDLEBAR, w/throttle mounting tab, no foam, black	1
232A	BLADE PROTECTOR, fits 6"-8" quantum auger	1
2320A	BLADE PROTECTOR, fits 6"-8" turbo auger	1
233A	BLADE PROTECTOR, fits 9" turbo & 10" quantum	1
53606	NUT, #10, nyloc	1
60G70	TOGGLE SWITCH	1
63387	LOCKWASHER, 5MM	4
8651	STRAP, Blade Protector	1
8905I	THROTTLE CONTROL ROD	1
8906	THROTTLE CONTROL, TC-300 engine	1
8912	44T GEAR	1
8913	OUTPUT SHAFT, 7/8"	1
8915	DOWEL PIN, 1/4" x 1/2", hardened steel	1
8916	CLUTCH DRUM & 7T PINION GEAR	1
8918	WASHER-Cutch, hardened steel	1
8919	GASKET	1
8920	CENTRIFUGAL CLUTCH ROTOR	1
8922	BALL BEARING	3
8923	BALL BEARING	2
8924	SNAPRING	3
8929	BOLT-SHCS, 1/4-20 x 1-1/2" (gear case bottom to gear case top)	2
8931F	BOLT-SHCS, 1/4-20 x 2", full thread (gear case to handlebar plate)	4
8932	NUT-Hex, 1/4-20 Keps	4
89382K	GEAR CASE TOP, black	1
8939K	GEAR CASE BOTTOM, black	1
8955	AUGER BOLT-SHCS, 3/8-16 x 1-1/4" (auger to powerhead)	1
89TRAN2K	COMPLETE TRANSMISSION, black	1
90129	POINT REPLACEMENT ASSY.	1
90136	BOLT, #10-24 x 1-1/4" stainless	1
90165	HOLDER, Point	1
90166	POINT	1
9214	48T GEAR & 10T PINION GEAR , one piece unit	1
BB8	ICE BLADE, 8" TurboCut	2
BR8N	ICE AUGER, 8" Turbo, red	1
GCA1	GAS CAP	1
GT49B	GAS TANK, black	1
IB5810	BOLT, 5mm x 0.8 x 10mm, (turbo ice blade to auger)	4
IB5816	BOLT, 5mm x 0.8 x 16mm, (ice blade to auger)	4
IN58	NUT, 5mm x 0.8 nyloc, (ice blade to auger)	4
LBL2003M	DECAL, Mako, serialized	1
LBLBPE	DECAL, Blade Protector, Eskimo	1
LBLESKS	DECAL, Eskimo oval, auger stem & handlebar plate	2
QB8	ICE BLADE, 8" quantum, set of two	2
QB9	ICE BLADE, 9" quantum, set of two	2
QB10	ICE BLADE, 10" quantum, set of two	2
QT8N	ICE AUGER, 8" red	1
QT9N	ICE AUGER, 9" red	1
QT10N	ICE AUGER, 10" red	1
S1011	BOLT-SHCS, 1/4-20 x 3/4" (handlebar plate to engine)	4
TC300	GAS ENGINE, 2-hp Tecumseh	1

Accessories

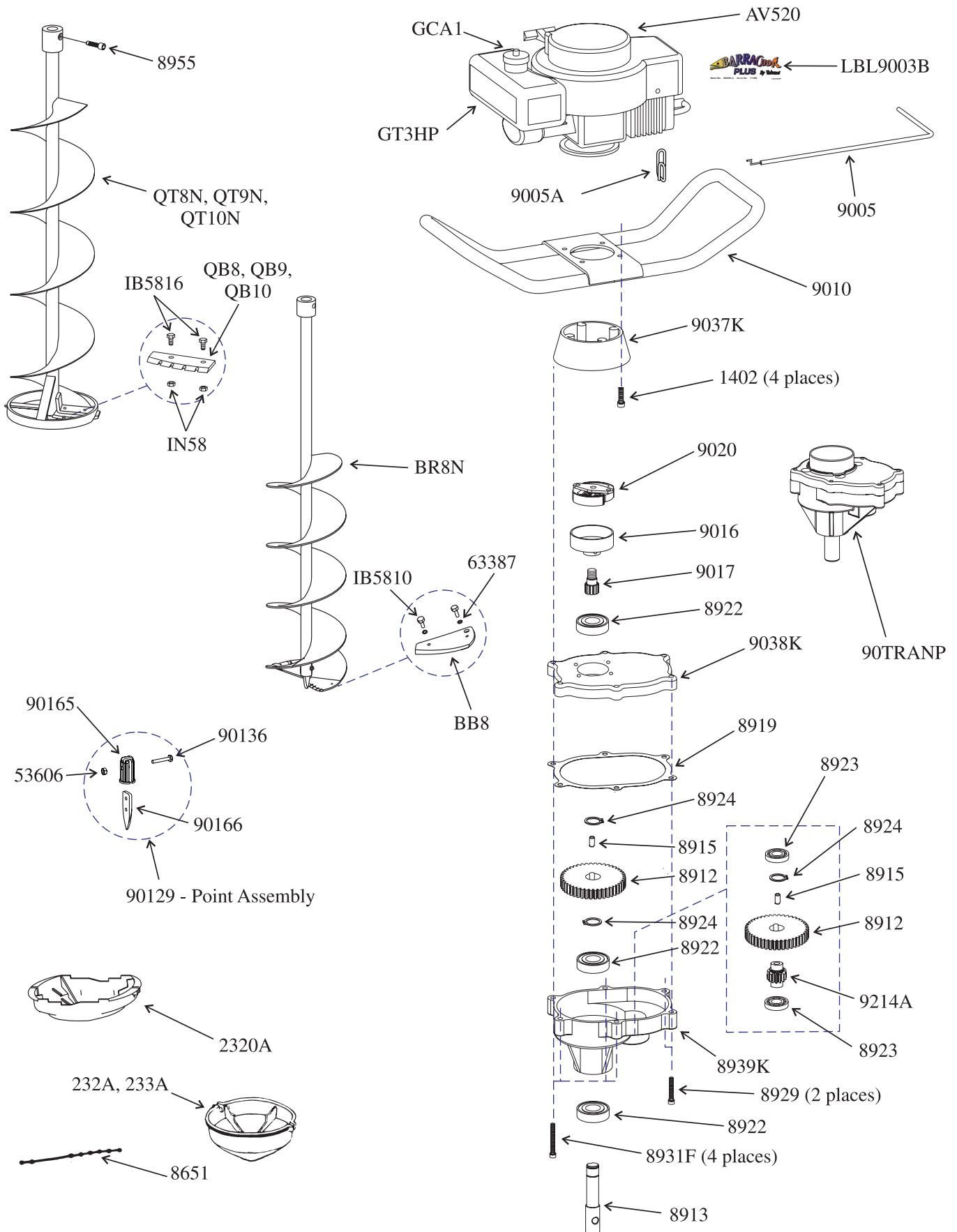
EXT6	DEPTH EXTENSION, 6"
EXT12	DEPTH EXTENSION, 12"
EXT18	DEPTH EXTENSION, 18"

BARRACUDA MODEL 893B

Part #	Description	Qty.
232A	BLADE PROTECTOR, fits 6"-8" quantum auger	1
2320A	BLADE PROTECTOR, fits 6"-8" turbo auger	1
233A	BLADE PROTECTOR, fits 9" turbo & 10" quantum	1
53606	NUT, #10, nyloc	1
60G70	TOGGLE SWITCH	1
63387	LOCKWASHER, 5MM	4
8651	STRAP, Blade Protector	1
8905I	THROTTLE CONTROL ROD, black	1
8906	THROTTLE CONTROL, TC-300 engine	1
8910T2	HANDLEBAR, w/throttle mounting tab, black	1
8912	44T GEAR	1
8913	OUTPUT SHAFT, 7/8"	1
8915	DOWEL PIN, 1/4" x 1/2", hardened steel	1
8916	CLUTCH DRUM & 7T PINION GEAR	1
8918	WASHER-Clutch, hardened steel	1
8919	GASKET	1
8920	CENTRIFUGAL CLUTCH ROTOR	1
8922	BALL BEARING	3
8923	BALL BEARING	2
8924	SNAPRING	3
8929	BOLT-SHCS, 1/4-20 x 1-1/2" (gear case bottom to gear case top)	2
8931F	BOLT-SHCS, 1/4-20 x 2", full thread (gear case to handlebar plate)	4
8932	NUT-Hex, 1/4-20 Keps	4
89382K	GEAR CASE TOP, black	1
8939K	GEAR CASE BOTTOM, black	1
893BT	GAS TANK, clear	1
8955	AUGER BOLT-SHCS, 3/8-16 x 1-1/4" (auger to powerhead)	1
89TRAN2K	COMPLETE TRANSMISSION, black	1
90129	POINT REPLACEMENT ASSY.	1
90136	BOLT, #10-24 x 1-1/4" stainless	1
90165	HOLDER, Point	1
90166	POINT	1
9214	48T GEAR & 10T PINION GEAR , one piece unit	1
BB8	ICE BLADE, 8" TurboCut	2
BR8N	ICE AUGER, 8" Turbo, red	1
GCA1	GAS CAP	1
IB5810	BOLT, 5mm x 0.8 x 10mm, (turbo ice blade to auger)	4
IB5816	BOLT, 5mm x 0.8 x 16mm, (ice blade to auger)	4
IN58	NUT, 5mm x 0.8 nyloc, (ice blade to auger)	4
LBL8903B	DECAL, Barracuda, serialized	1
LBL891F	DECAL, Barracuda, auger flight	1
LBLBPE	DECAL, Blade Protector, Eskimo	1
LBLESKS	DECAL, Eskimo oval, auger stem & handlebar plate	2
QB8	ICE BLADE, 8" quantum, set of two	2
QB9	ICE BLADE, 9" quantum, set of two	2
QB10	ICE BLADE, 10" quantum, set of two	2
QT8N	ICE AUGER, 8" red	1
QT9N	ICE AUGER, 9" red	1
QT10N	ICE AUGER, 10" red	1
S1011	BOLT-SHCS, 1/4-20 x 3/4" (handlebar plate to engine)	4
TC300	GAS ENGINE, 2-hp Tecumseh	1

Accessories

EXT6	DEPTH EXTENSION, 6"
EXT12	DEPTH EXTENSION, 12"
EXT18	DEPTH EXTENSION, 18"





BARRACUDA PLUS PARTS LIST MODEL 9003B



MINIMUM ORDER \$10.00

Part #	Description	Qty.	Part #	Description	Qty.
1402	BOLT-SHCS, 5/16-18 x 1-1/4" (mount ring to engine)	4	9020	CENTRIFUGAL CLUTCH ROTOR	1
232A	BLADE PROTECTOR, fits 6"-8" quantum auger	1	9037K	MOUNT RING (handlebar to gear case top)	1
2320A	BLADE PROTECTOR, fits 6"-8" turbo auger	1	9038K	GEAR CASE TOP, black	1
233A	BLADE PROTECTOR, fits 9" turbo & 10" quantum	1	90129	POINT REPLACEMENT ASSY.	1
53606	NUT, #10, nyloc	1	90136	BOLT, #10-24 x 1-1/4" stainless	1
60G70	TOGGLE SWITCH	1	90165	HOLDER, Point	1
63387	LOCKWASHER, 5MM	4	90166	POINT	1
8651	STRAP, Blade Protector	1	90TRANP	COMPLETE TRANSMISSION, black	1
8912	44T GEAR	2	9214A	10T PINION GEAR	1
8913	OUTPUT SHAFT, 7/8"	1	AV520	GAS ENGINE, 3-hp Tecumseh	1
8915	DOWEL PIN, 1/4" x 1/2", hardened steel	2	BB8	ICE BLADE, 8" TurboCut	2
8919	GASKET	1	BR8N	ICE AUGER, 8" Turbo, red	1
8922	BALL BEARING	3	GCA1	GAS CAP	1
8923	BALL BEARING	2	GT3HP	GAS TANK, black	1
8924	SNAPRING	3	IB5810	BOLT, 5mm x 0.8 x 10mm, (turbo ice blade to auger)	4
8929	BOLT-SHCS, 1/4-20 x 1-1/2" (gear case bottom to gear case top)	2	IB5816	BOLT, 5mm x 0.8 x 16mm, (ice blade to auger)	4
8931F	BOLT-SHCS, 1/4-20 x 2", full thread (gear case to handlebar plate)	4	IN58	NUT, 5mm x 0.8 nyloc, (ice blade to auger)	4
8932	NUT-Hex, 1/4-20 Keps	4	LBL891F	DECAL, Barracuda, auger flight	1
8939K	GEAR CASE BOTTOM, black	1	LBL9003B	DECAL, Barracuda Plus, serialized	1
8955	AUGER BOLT-SHCS, 3/8-16 x 1-1/4" (auger to powerhead)	1	LBLBPE	DECAL, Blade Protector, Eskimo	1
9005	THROTTLE CONTROL ROD	1	LBLESKS	DECAL, Eskimo oval, auger stem & handlebar plate	2
9005A	THROTTLE CONTROL TWIST	1	QB8	ICE BLADE, 8" quantum, set of two	2
9010	HANDLEBAR, black	1	QB9	ICE BLADE, 9" quantum, set of two	2
9016	CLUTCH DRUM, 3" threaded	1	QB10	ICE BLADE, 10" quantum, set of two	2
9017	12T PINION GEAR, threaded	1	QT8N	ICE AUGER, 8" red	1
			QT9N	ICE AUGER, 9" red	1
			QT10N	ICE AUGER, 10" red	1

Accessories

EXT6	DEPTH EXTENSION, 6"
EXT12	DEPTH EXTENSION, 12"
EXT18	DEPTH EXTENSION, 18"

One Year Limited Warranty

The Ardisam, Inc., Manufacturing Company warrants this Ice Auger to be free from defects in material or workmanship. Conditions of this warranty include:

What is covered under warranty:

Ardisam, Inc. will repair or replace any part defective in workmanship or material within one year after delivery of the auger to the original purchaser.

What is not covered under warranty:

This warranty applies only to products which have not been repaired or altered outside our factory. It covers only defects resulting from normal use, and does not cover defects arising from misuse, alteration, negligence, commercial use, or accident. This warranty applies only to the original purchaser, and is not transferrable.

How to obtain service:

Return the product to us at the address below with transportation charges prepaid.

This warranty supersedes all other warranties either expressed or implied and all other obligations or liabilities on our part. Ardisam, Inc., does not assume, and does not authorize any other person to assume for us, any liability in connection with the sale of our products. This guarantee is void unless warranty card is properly filled out and returned to Ardisam, Inc., Cumberland, Wisconsin, at time of purchase.



Ardisam, Inc.
1360 1st Avenue, Cumberland, Wisconsin 54829
(715)822-2415 • Fax (715)822-4180
1-800-345-6007
www.ardisam.com