

PCM-3201

USER MANUAL

Copyright notice

This document is copyrighted, 2000, by Advantech Co., Ltd. All rights are reserved. The original manufacturer reserves the right to make improvements to the products described in this manual at any time without notice.

No part of this manual may be reproduced, copied, translated or transmitted in any form or by any means without the prior written permission of the original manufacturer. Information provided in this manual is intended to be accurate and reliable. However, the original manufacturer assumes no responsibility for its use, nor for any infringements upon the rights of third parties which may result from its use.

Acknowledgements

Realtek is trademark of Realtek Corporation.

Sound Blaster Pro, Sound Blaster 16 and Wave Blaster are registered trademarks of Creative Technology Ltd.

PC/104 and PC/104 logo are registered trademarks of the PC/104 Consortium.

Microsoft, MS-DOS, and MS are registered trademarks of Microsoft Corporation.

Windows, Windows 95, and Windows NT are registered trademarks of Microsoft Corporation.

IBM, AT, OS/2 and Micro Channel are registered trademarks of International Business Machines Corporation.

All other product names or trademarks are properties of their respective owners.

For more information on this and other Advantech products, please visit our website at:

<http://www.advantech.com>

For technical support and service, please visit our support website at:

<http://www.advantech.com/support>

This manual is for the PCM-3201.

Part No. 2006320100

1st Edition Printed in Taiwan September 2000

Packing Set

Before you begin installing PCM-3201 module, please make sure that the following materials have been shipped:

- ◆ **1 PCM-3201 PC/104 Sound Module**
- ◆ **1 CD title include user's manual and driver and utility program**
- ◆ **1 Startup manual**

If any of these items is missing or damaged, contact your distributor or sales representative immediately.

Contents

Chapter 1 General Information.....	5
Product Highlights.....	6
Introduction.....	6
Features.....	6
Specification.....	7
Technical Specifications.....	7
Physical and Environmental Specifications.....	7
Board Layout.....	8
Chapter 2 Hardware Installation.....	9
Jumper, connectors	10
Locating jumpers, connectors.....	11
Setting jumpers.....	12
Safety precautions.....	12
Installing PCM-3201 Module.....	13
Jumper configuration reference.....	13
External Devices connecting.....	13
Wave Blaster/MIDI Extension Connector (J3).....	13
Game/Joystick/MIDI Connector (CN1&JP1).....	13
Mono Input Connector (JP2).....	13
Mitsumi CD Audio Input Connector (J2).....	13
IDE CD Audio Input Connector (J1).....	13
MIC Connector (CN2&J4).....	14
Stereo Line In Connector (CN3&J5).....	14
Stereo Line Out Connector (CN4&J6).....	14
Speaker Out Connector (CN5&J7).....	14
Chapter 3 Installation for Windows 3.1.....	15
Chapter 4 Installation for DOS.....	17

Chapter 5 Installation for Windows 95.....19

Chapter 6 Installation for Windows 98

WDM.....21

Chapter 7 Installation for Windows

NT3.5/4.0.....23

Chapter 9 Setup Utility Program.....25

A4CONFIG.EXE.....26

Trouble Shooting.....27

Problem in DOS.....27

Problem in Windows 3.1.....28

Appendix A Installing PC/104 Modules.....29

Appendix B Pin Assignments.....31

PC/104 Connectors (P1, P2).....32

Wave Blaster/MIDI Extension Connector (J3).....33

Game/Joystick/MIDI Connector (CN1 / J9)33

Mitsumi CD Audio Input Connector (J1).....33

IDE CD Audio Input Connector (J2).....33

Microphone input (J4).....34

Line Input Connector (J5).....34

Line Output Connector (J6).....34

Speaker Output Connector (J7).....34

PC Output Connector (J8).....34

CHAPTER 1

GENERAL INFORMATION

**This chapter gives background
Information on the PCM-3201.
(ALS120 Sound System).**

You can find out:

- **Product Highlights**
- **Product Features**
- **Compatibility**
- **Product Specifications**
- **Module Layout**

Product Highlights

- **PC/104 Embedded-PC Module.**
- **Sound Blaster Pro & 16 compatible.**
- **Built-in ALSFM Synthesizer.**
- **Built-in w/external wavetable Synthesizer.**
- **Built-in 3D Sound Effect Processor.**
- **Enhance Game/MIDI port support.**
- **Full duplex for concurrent recording and playback.**
- **Proven Avance Logic compatibility, quality and reliability.**

Introduction

The PCM-3201 sound module offers a wide range of flexible, economical and expandable solutions that can satisfy diverse needs in audio application.

The kernel of PCM-3201 is the ALS120 chip that are the industry standard music synthesizers found in most personal computer audio boards. The ALS uses FM synthesis techniques that are proprietary to Avance Logic. The ALS120 single chip audio solution integrates audio CODEC, DOS games compatibility and D/A converter with FM synthesis in one package. The ALS120 replaces some of devices used in current Soundblaster compatible audio subsystem.

Whatever the particular configuration, each of the PCM-3201 audio system can be relied on the high levels of quality, compatibility and reliability. The PCM-3201 uses the first truly cost-effective implementation of wavetable synthesis in your applications.

Features

- **Single, mixed-signal, high performance VLSI sound ASIC**
- **Three software selectable DMA lines (0,1,3).**
- **Software selectable interrupts lines (5,7,9,10,11).**
- **Supports 8-bit ISA Plug & Play bus interface.**
- **Supports 16-bit CD-ROM interface.**
- **DMA interface with FIFO for full duplex.**
- **Supports Enhance Game port.**
- **MIDI port with input and output FIFO.**
- **8-bit or 16-bit monaural/stereo digital audio from 4KHz to 48 KHz.**
- **Software master volume control.**
- **3D Sound Effect processor.**

- **ALSFM Synthesizer.**
- **IIC/EEPROM interface.**
- **+5V power for digital and analog.**

Specifications

Technical Specifications

Computer BUS: PC/104 (ISA) Standard

Bus Width: 16-bit

Input/Output Connectors:

- | | |
|-------------------------------|---------------------|
| ● Wave Blaster | Input/Output |
| ● Game/MIDI port | Input/Output |
| ● Line Out | Output |
| ● Line In | Input |
| ● Microphone (MIC) In | Input |
| ● Speaker | Output |
| ● IDE CD-ROM Audio | Input |
| ● Mitsumi CD-ROM Audio | Input |
| ● PC In | Input |
| ● ALSFM Synthesizer | |
| ● MPU-401 UART MIDI | |

Physical and Environmental Specifications

Physical Specifications

Dimemnsions (L x W) : 96 x 90 mm (3.8" x 3.5")

Weight : 82g (.180lb)

Environmental Specifications

Operating Temperature : 0 to 70 degree C (32 to 158 degree K).

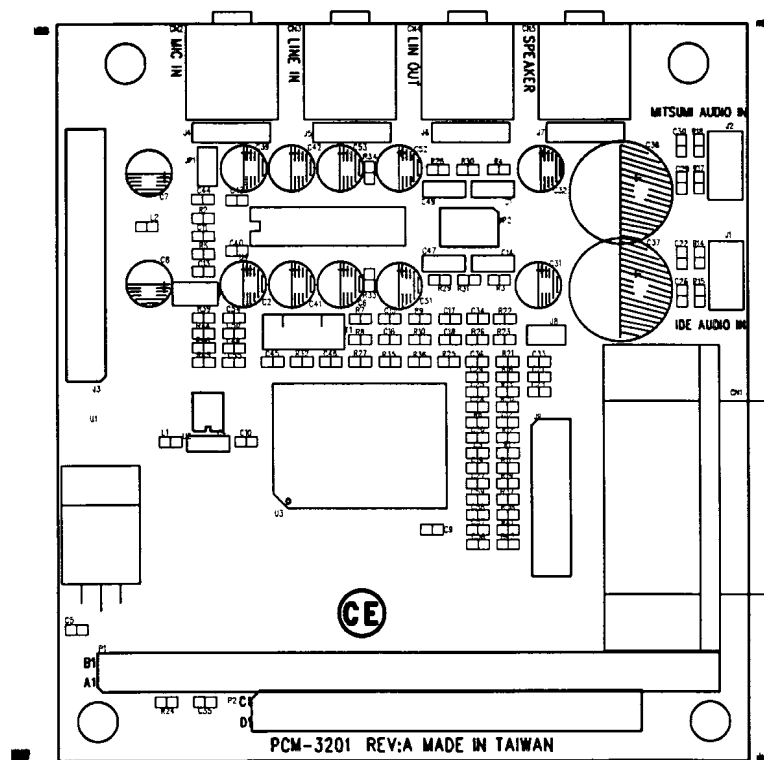
Storage Temperature : -40 to 85 degree C (-40 to 185 degree F).

Humidity (operating) : 0% to 95% Non-Condensing.

Power Requirements : +5V, +12V +/-5% tolerance on power supply.

Power consumption : +5 @180 mA, +12 @100mA

Board Layout



Pin No.1,2,3,4,5 OF CN2, CN3, CN4 and CN5 are 1.2x0.6mm oval holes.

FIRST LAYER IS COMPONENT SIDE.

CHAPTER 2

Hardware Installation

This chapter tells you how to set up the PCM-3201 (ALS120 Sound System) hardware, including instructions on setting jumpers and connecting external devices. Be sure to read all the safety precautions before you begin the installation procedures.

Jumpers, Connectors

Connectors on the board link it to external audio devices and other PC/104 modules. In addition, the board has a number of jumpers that allow you configure the audio application to suit your systems.

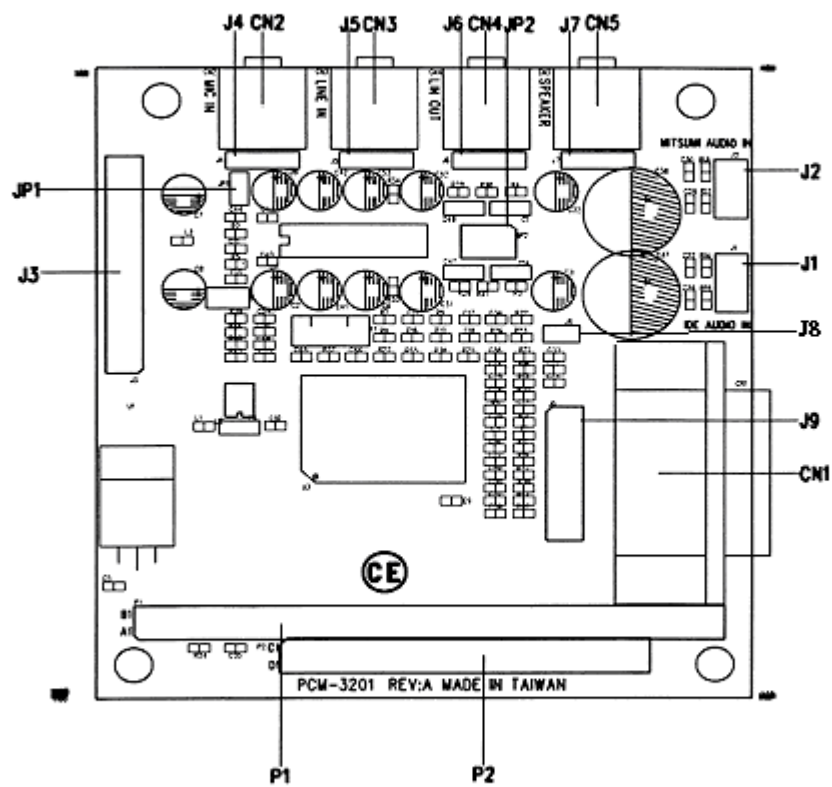
Jumpers

Label	Function
JP1	open for mono microphone
JP2	select line output (1-2,4-5) or speaker output (2-3,5-6)

Connectors

Label	Function
P1	PC/104 ISA bus expansion
P2	PC/104 ISA bus expansion
J1	IDE CD-ROM audio input connector
J2	Mitsumi CD-ROM audio input connector
J3	wave blaster/MIDI extension connector
J8	PC audio input connector
CN1/J9	game/joystick/MIDI connector
CN2/J4	MIC input connector
CN3/J5	line input connector
CN4/J6	line output connector
CN5/J7	speaker output connector

Locating Jumpers, Connectors

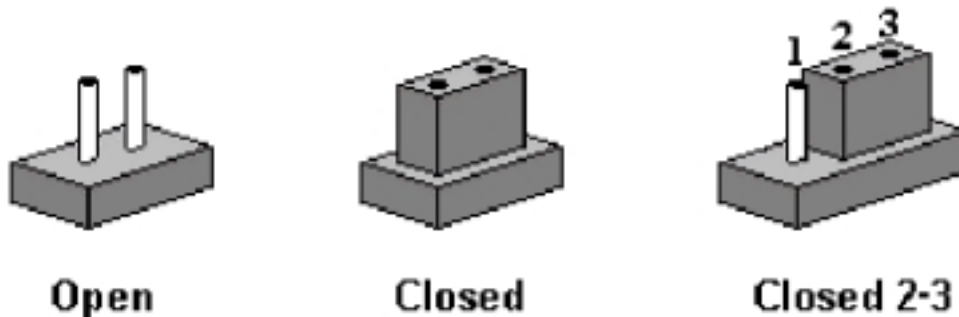


Setting Jumpers

To match the needs of your application, you need to configure your PCM-3201 by setting jumpers. A jumper is the simplest kind of electric switch. It consists of two metal pins and a small metal clip (often protected by a plastic cover) that slides over the pins to connect them. To “close” a jumper you connect the pins with the clip. To “open” a jumper you remove the clip. Sometimes a jumper will have three pins label 1, 2, and 3. In this case you would connect either pins 1 and 2 or 2 and 3.

The jumper settings are schematically depicted as follow:

Setting Jumpers



A pair of needle –nose pliers may be helpful when working with jumpers.

If you have doubts about the best hardware configuration for your system application, contact your local distributor or sales representative before you make any changes.

Safety Precautions

Warning ! Always completely disconnect the power cord from your chassis whenever you are working on it. Do not make connections while the power is on because sensitive electronic components can be damaged by the sudden rush of power.
Only experienced electricians personnel should open the PC chassis.

Caution ! Always ground yourself to remove any static charge before touching the module. Modern electronic devices are very sensitive to static electric charges. Use a grounding wrist strap at all times. Place all electronic components on a static-dissipative surface or in a static-shielded bag when they are not in the chassis.

Installing PCM-3201 Module

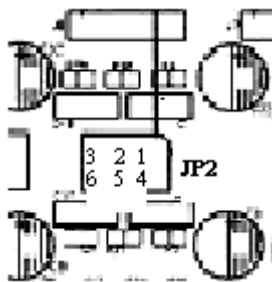
Factory Default Settings

PCM-3201 Sound Module default configuration that supports the Plug & play 1.0a specification will depend on the available system resources.

Jumper Configuration Reference

JP1 is closed for stereo microphone input.

JP2 is closed at 2-3,5-6 for speaker output



External Devices Connecting

Wave Blaster/MIDI Extension Connector (J3)

The wave table connector is used to attach an external wave table module for playback, mixing, or recording.

Game/Joystick/MIDI Connector (CN1 & J9)

The Game/MIDI Port connectors (15-pin D-sub & 16-pin Header) are used to attach a joystick for game interface or to attach an external FM synthesizer for playback, mixing, or recording.

PC Input Connector (J8)

This connector is provided that allows routing of the PC speaker to the PCM-3201 sound module. This allows the PC-speaker to be the output of the PCM-3201.

Mitsumi CD Audio Input connector (J2)

The Mitsumi CD audio input connector is used to connect the audio cable from Mitsumi CD-ROM drive for playback, mixing, and recording.

IDE CD Audio Input Connector (J1)

The IDE CD audio input connector is used to connect the audio cable from IDE CD-ROM drive for playback, mixing, and recording.

MIC connector (CN2/J4)

The Microphone in phone-jack is used to attach a microphone for live audio input for playback, mixing, or recording. A 20db gain can be obtained internally. The microphone input impedance will be around 1.8K ohm.

Stereo Line in Connector (CN3/J5)

The Stereo Line In phone-jack is used to attach stereo devices such as cassette, digital audiotape, or minidisk players for playback, mixing, or recording.

Stereo Line out Connector (CN4/J6)

The Stereo Line Out phone-jack provides the non-amplified output for the stereo channels (left and right). The output is for attaching powered speakers or an external audio amplifier. When used in conjunction with the Speaker Out output, the surround sound function will be activated.

Speaker Out Connector (CN5/J7)

The Speaker Out phone-jack provides the built-in power amplifier outputs for the left and right stereo channels. When used in conjunction with Line out output, the surround sound function will be active.

CHAPTER 3

Installation for Windows 3.1

1. Start Windows 3.1.
2. Insert the “PCM-3201 DOS/Windows 3.1/Windows 95 Drivers and Utilities” diskette into diskette driver A (or B).
3. Select [RUN] from the Program Manager File menu and type A: setup on the command line.
4. A Welcome dialog box will appear, Click [Next] to continue the installation.
5. A Choose Destination Location dialog box will appear. Click [Next] in the Choose Destination dialog box to install the ALS120 sound driver to the default directory or click on Browse if you want to install to different directory.
6. Setup will automatically create a folder and icons for the sound application.
7. A Modifying AUTOEXEC.BAT dialog box will appear and Click on [Next] to accept the default to “Let Setup modifies the AUTOEXEC.BAT. File”.
8. A Configuration Panel dialog box will appear for the first time installation and please check each hardware settings and make changes according to hardware installed and also if you do not hear music at tests.
9. Click on [Finish] Setup will configure
10. The hardware settings. Refer to the Setup
11. Utility Program in the next chapter to
12. Configure your sound module.
13. After the configuration is complete, remove the diskette drive.

CHAPTER 4

Installation for DOS

Use this chapter to install PCM-3201 driver for DOS

1. Install the PCM-3201 sound module (see “Hardware Installation” in Chapter 2). Insert the “PCM-3201 DOS/Windows 3.1/Windows 95 Drivers and Utilities” diskette into diskette drive A (or B).
2. If Windows 3.1 is running, exit the application.
3. At the C:\> prompt, type a: (or b:) and press the Enter key. At the A:\> prompt, type DOSINST>EXE and press the Enter key.
4. The Avance Sound Chip Installation Program screen will be displayed showing the following defaults:
Avance software copy to: C:\A4SOUND
System boot up drive: C:\
 - To make changes to the defaults, select the parameter with the Up/Down Arrow keys and press the Enter key. Then change the parameter and press the Enter key again to accept the change.
 - When satisfied with the new parameters or to accept the defaults, select “accept the above” with the Up/Down Arrow keys and press the Enter key.
5. The installation of the Avance Logic software drivers will now begin.
6. When all of the files are copied to the fixed disk, installation program will automatically update the autoexec.bat, saving copies of the original files with the extension “.als”, and the a4config.exe utility will automatically start. Use the instructions given in “Setup Utility Program” on the next page to set up the ALS120 sound module.
7. When the installation and setup are complete, remove the diskette from the diskette drive.

CHAPTER 5

Installation for Windows95

Use this chapter to install PCM-3201 driver for Windows 95

1. Power on the system and when the “New Hardware Found” window comes up, click [OK] to accept the default. Select “Driver from disk provided by hardware manufacturer”.
2. Click on [OK] when the “Install From Disk” dialog box appears.
3. Insert the “PCM-3201 DOS/Windows 3.1/Windows 95 Drivers and Utilities” diskette into diskette drive A (or B), select the correct directory and click on [OK]. Windows 95 will automatically copy all of the needed files and configure the ALS120 sound module.
4. The sound application is included on this diskette and you have the option of installing it now. If you do not need to install the application, remove the diskette from the diskette drive and skip procedures 5 through 10.
5. Select [RUN] from the start menu, a Run dialog box appears:
 6. Type A:\setup and Click on [OK].
 7. Click [Next] in the Welcome dialog box.
 8. A Choose Destination dialog box will appears, Click [Next] to install the sound driver to the default directory or click on Browse if you want to install to a different directory.
 9. Windows will automatically create a folder and icon for the sound application.
 10. Click [Finish]. The installation is complete.
 11. Remove the diskette from the diskette drive.

CHAPTER 6

Installation for Windows 98 WDM

Use this chapter to install PCM-3201 driver for Windows 98 WDM

1. Ensure that PCM-3201 is installed properly into an PC104 connector and power on the system.
2. Windows 98 will prompt use with a “New Hardware Found” dialog box for PCM-3201 sound module is PC104 Plug & Play. To install the Windows 98 driver, select your hard drive location in which the driver database exists under or insert the “PCM-3201 Win 98 Drivers and Utilities” diskette into the appropriate drive and select that drive from the prompted dialog box and click on [NEXT]. Windows98 will copy all necessary files and setup all the logical devices on the sound module automatically.
3. Install the ALSRACK(Avance MediaRack Player) by running the “SETUP.EXE” file found in the PCM-3201 Win98 Drivers & Utilities disk/database. This will create the Avance Sound Program Group by the ALSRACK utility icon. Please check “README” file for full description of ALSRACK function.

CHAPTER 7

Installation for Windows NT 3.5/4.0

Use this chapter to install PCM-3201 driver for Windows NT 3.5/4.0

1. Ensure that PCM-3201 is installed properly and power on the system.
2. Insert the “PCM-3201 Windows NT Drivers and Utilities” diskette into drive A: (or B:). Go to [Control Panel/Multimedia /Device/Add] and choose [OK] for “Avance Logic, Inc. Sound Chip”.
3. While installing, “Driver Exists” warning message will appear and ask whether to keep the old ‘midimap.cfg’ or [re-install]. Please select [re-install] or else MIDI will not function properly.
4. Configure proper I/O’s and DMA’s if necessary as they appear on screen.
5. Re-boot system and remove driver diskette before driver will take into effect.

CHAPTER 9

Setup Utility Program

A4CONFIG.EXE

This utility is used to set up the PCM-3201 sound module. It is automatically started when the Avance Logic software drivers are first installed in a DOS or Windows 3.1 application. It should be re-run anytime the system hardware configuration is changed or a change to the PCM-3201 sound module configuration is desired. The a4 config.exe utility resides in the directory into which the Avance Logic software drivers were stored.

To run the a4config.exe utility, perform the following:

1. If Windows 3.1 is running, exit the application and at the C:\> prompt, set the current directory containing the a4config.exe utility (A4SOUND was the default directory at installation time), type a4config.exe, and then press the Enter key to execute the utility.
2. The ALS120 Sound Chip Configuration Program menu, screen will be displayed. Use the Tab, Space, Enter, Down Arrow, and ESC keys and/or the mouse to select and set options in menus, to move between menus, and to make and set changes to values.
3. In the Sound Chip Configuration Program menu, the SB16 configuration screen showing the I/O port, DMA, and IRQ settings will be displayed, and the default settings are: I/O Port: 220, DMA1: 1, DMA2: 3 and IRQ: 5. Select and set any changes or accept the defaults.
4. In the Sound Chip Configuration Program menu, select "MPU401" to configure the external MIDI. The Enable/Disable box can be selected by using mouse or [space] key. If the external MIDI is enabled, the I/O port and IRQ settings will be displayed and can be changed by mouse or [down arrow] key. The default settings are: I/O Port: 330 and IRQ: 9. Select and any changes or accept the defaults.
5. In the Sound Chip Configuration Program menu, select "CD-ROM" to configure the CD-ROM. The Enable/Disable box can be selected by using mouse or [space] key.
6. In the Sound Chip Configuration Program menu, select "ADLIB" to configure the OPL3. The Enable /Disable box can be selected by using mouse or [space] key.

7. In the Sound Chip Configuration Program Menu, select “Game Port” to configure the game port. The Enable/Disable box can be selected by using mouse or [space] key.
8. In the Sound Chip Configuration Program menu, select “Set Volume”. The Setting Volume screen will be displayed. Make and set any changes or accept the existing settings and return to the Main Menu.
9. In the Sound Chip Configuration Program menu, 8-Bit Sound/16-Bit Sound/FM music box will be displayed. Select each box and verify the correct operation of the PCM-3201 Sound Module. Follow the instruction given for each mode. If the sound module does not operate correctly in any mode, reconfigure it by rerunning this procedure.
10. When satisfied with the operation of the PCM-3201 sound module, select [OK] to exit the utility.

Trouble Shooting

The PCM-3201 sound module is designed to run trouble free once it is installed and set up. Most problems will be encountered during installation and setup or will be encountered later when something is changed in the system. The following are descriptions of and solutions for the more common problems that you may encounter. Please review these problems before requesting technical assistance.

Problem in DOS

1. Problem: Cannot load the CD-ROM software driver
 Cause: The CD-ROM port may not be enable. Click the config.sys file for the line “DEVICE=C:\A4SOUND\CDSETUP.SYS”. If it is not present, perform the steps outlined in the Solution. If it is present, call for technical assistance.
 Solution: Run the a4config.exe utility. In the Device menu, select “CD-ROM” and press [OK] to configure the CD-ROM. Verify that the line “device=c:\a4sound\cdsetup.sys” is now in the config.sys file and then proceed to install the CD-ROM drive.
2. Problem: No sound when playing a DOS game
 Cause: There may be a conflict in the SB16 settings.
 Solution: Rerun the a4config.exe utility and try another Port, DMA, or IRQ

address.

Problem in Windows 3.1

1. Problem: There is no “Sound” or “MIDI Sequence” item in the Device pull-down menu in the Media Player or the ALSRACK.EXE application does not work.

Cause: The MIDI software driver may not be load. Check the system.ini file for the following lines. If any are missing, perform the steps outlined in the Solution. If all are present, call for technical assistance.

[boot]

drivers=mmsystem.dii msmixmgr.dll

[drivers]

Wave=a4sndsys.drv

Aux=a4sndsys.drv

Mixer=a4sndsys.drv

Midi=a4opl.drv

Midi 1=a4mpu401.drv

[386Enh]

device=a4sndsys.386

Solution: Run the a4config.exe utility in its entirety.

APPENDIX A

Installing PC/104 Modules

This appendix gives instructions for installing PC/104 Modules.

Installing PC/104 modules

The CPU module's PC/104 connectors give you the flexibility to attach PC/104 expansion modules. These modules perform the functions of traditional plug-in expansion modules, but save space and valuable slots.

Modules include:

- **PCM-3335** 386 CPU Module w/Flat Panel/CRT Interface
- **PCM-3600** FAX/Modem Module
- **PCM-3420** Fast SCSI-2 Module
- **PCM-3201** Sound Module
- **PCM-3810** Solid State Disk Module
- **PCM-3820** High Density Flash Disk Module
- **PCM-3115** PCMCIA Module (two slots)
- **PCM-3610** Isolated RS-232 and RS-422/485 Module
- **PCM-3660** Ethernet Module
- **PCM-3718** 30KHz A/D Module
- **PCM-3724** 48-Channel DIO Module
- **PCM-3910** Breadboard Module

Installing these modules on the CPU module is quick and simple. The following steps show how to mount the PC/104 modules:

1. When remove the CPU module from your system, pay particular attention to the safety instructions already mentioned.
2. Make any jumper or link changes required to the CPU module now. Once the PC/104 module is mounted you may have difficulty in accessing these.
3. Normal PC/104 modules have male connectors and mount directly onto the main module. However, to ensure better bus matching, the connectors on the CPU module and the PC/104 module are both female. For this reason, you may need to use the "male-male" adapter included with the CPU module in order to properly connect your PC/104 module. (Refer to the diagram on the following page.)
4. Mount the PC/104 module onto the CPU module by pressing the module firmly but carefully onto the mounting connectors.
5. Secure the PC/104 module onto the CPU module using the four mounting spacers and screws.

APPENDIX B

Pin Assignments

This appendix contains information of a detailed or specialized nature.

It includes:

- PC/104 Connector
- Wave Blaster/MIDI Extension Connector
- Game/Joystick/MIDI Connector
- IDE CD Audio Connector
- Mitsumi CD Audio Connector
- Microphone Input
- Line Input
- Line Output
- Speaker Output

PC/104 Connectors (P1, P2)

PCM-3201 PC/104 Connectors (P1, P2)

Pin	Signal			
	Row-A	Row-B	Row-C	Row-D
0	--	--	0V	0V
1	IOCHCKH*	0V	SBHE*	MEMCS16*
2	SD7	RESETDRV	LA23	IOCS16*
3	SD6	+5V	LA22	IRQ10
4	SD5	IRQ9	LA21	IRQ11
5	SD4	-5V	LA20	IRQ12
6	SD3	DRQ2	LA19	IRQ15
7	SD2	-12V	LA18	IRQ14
8	SD1	ENDXFR*	LA17	DACK0*
9	SD0	+12V	MEMR*	DRQ0
10	IOCHRDY	N/C	MEMW*	DACK5*
11	AEN	SMEMW*	SD8	DRQ5
12	SA19	SMEMR*	SD9	DACK6*
13	SA18	IOW*	SD10	DRQ6
14	SA17	IOR*	SD11	DACK7*
15	SA16	DACK3*	SD12	DRQ6
16	SA15	DRQ3	SD13	+5V
17	SA14	DACK1*	SD14	MASTER*
18	SA13	DRQ1	SD15	0V
19	SA12	REFRESH*	KEY	0V
20	SA11	SYSCLK	--	--
21	SA10	IRQ7	--	--
22	SA9	IRQ6	--	--
23	SA8	IRQ5	--	--
24	SA7	IRQ4	--	--
25	SA6	IRQ3	--	--
26	SA5	DACK2*	--	--
27	SA4	TC	--	--
28	SA3	BALE	--	--
29	SA2	+5V	--	--
30	SA1	OSC	--	--
31	SA0	0V	--	--
32	0V	0V	--	--

* Active Low

Wave Blaster/MIDI Extension Connector (J3)

PCM-3201 Wave Blaster/MIDI Extension Connector

Pin	Signal	Pin	Signal
1	GND	2	NC
3	GND	4	MIDIOUT
5	GND	6	+5V
7	GND	8	NC
9	GND	10	+5V
11	GND	12	NC
13	NC	14	+5V
15	GND	16	NC
17	GND	18	AVDD+12V
19	GND	20	LINE IN LEFT
21	GND	22	AVDD-12V
23	GND	24	LINE IN RIGHT Pin
25	GND	26	RESETB

Game / Joystick / MIDI Connector (CN1/J9)

PCM-3201 Game/Joystick/MIDI Connector

Pin	Signal	Pin	Signal
1	VCC	2	GP4
3	GP0	4	GND
5	GND	6	GP1
7	GP5	8	VCC
9	VCC	10	GP6
11	GP2	12	TXD
13	GP3	14	GP7
15	RXD		

IDE CD Audio Input Connector (J1)

PCM-3201 Panasonic CD Audio Input Connector

Pin	Signal	Pin	Signal
2	GND	1	Audio In Right
3	GND	4	Audio In Left

Mitsumi CD Audio Input Connector (J2)

PCM-3201 Mitsumi CD Audio Input Connector

Pin	Signal	Pin	Signal
1	Audio In Right	2	GND
3	Audio In Left	4	GND

Microphone Input (J4)

PCM-3201 Microphone input

Pin	Signal	Pin	Signal
1	MIC In Right	2	GND
3	GND	4	MIC In Left

Line Input (J5)

PCM-3201 Line Input

Pin	Signal	Pin	Signal
1	Line In Right	2	GND
3	GND	4	Line In Left

Line Output (J6)

PCM-3201 Line Output

Pin	Signal	Pin	Signal
1	Line Out Right	2	GND
3	GND	4	Line Out Left

Speaker Output (J7)

PCM-3201 Speaker Output

Pin	Signal	Pin	Signal
1	Speaker Out Right	2	GND
3	GND	4	Speaker Out Left

PC Output (J8)

PCM-3201 PC Output

Pin	Signal	Pin	Signal
1	Speaker Out Right	2	GND