



Das Auto.

Golf Performance Range



Content overview

- 3 Introduction**
- 5 Range overview**
 - Golf GTI
 - Golf GTI Performance
 - Golf R
- 13 Exterior**
- 15 Interior**
- 17 Infotainment**
- 19 Technology**
- 21 Safety**
- 23 Optional Equipment**
- 25 Colours and Upholstery**
- 27 Features & Specifications**
- 33 Fuel Saving Tips**
- 34 Golf Capped Price Servicing & Corporate Sustainability - Think Blue.**
- 35 Glossary**
- 38 Owning a Volkswagen**





Golf GTI with optional Bi-Xenon headlights and panoramic sunroof shown.

Introduction.

Performance redefined. Three times over.

No automotive brand can lay claim to offering the world's best range of affordable performance cars quite like Volkswagen. For almost four decades, the Golf GTI has been the benchmark in its class, the vehicle to which car owners have aspired, the vehicle that other manufacturers wished they could call one of their own.

The Golf GTI may have spawned imitators everywhere, but no other model has come close to offering the unique blend of style and performance that it has. None except one, perhaps: the Golf R. The flagship in Volkswagen's performance hatch range continues to represent the epitome of form and function. No wonder it is lauded by driving enthusiasts everywhere. Only recently has this club of two welcomed one more member—the all new Golf GTI Performance. Of course, it all started with three letters—GTI. The first generation of the Golf quickly became one of the must-have cars of its era, and six subsequent generations have consistently raised the bar. Aspirational yet accessible, dynamic yet versatile, the Golf GTI is the embodiment of power, style, convenience and safety.

But the GTI doesn't have it all its own way, now that it's been joined by a stablemate in the Golf performance range—the brand new Golf GTI Performance. Its beating heart is still that of the Golf GTI, but technical enhancements and a number of unique features serve to distinguish it as a performance car in its own right.

For drivers wanting added boost, the Golf GTI Performance offers 7kW extra power over the Golf GTI (taking it to 169kW in total). Another technical embellishment is the addition of electronically controlled locking differential, which helps the Golf GTI Performance achieve new levels of agility and traction. Of course, it remains as effortlessly stylish as the Golf GTI. But 19-inch 'Santiago' wheels, Bi-Xenon headlights and rear LED tail lights all set it apart, as do

upgraded brakes with more prominent brake discs, complete with GTI badging on the front callipers. Finally, who can ignore the latest incarnation of the ultimate Golf—the Golf R? Truly a performance legend, the Golf R has accrued legions of fans.

Not content with merely exceeding expectations, Volkswagen has crafted the new Golf R to occupy the pinnacle of sporting performance. Promising superlative power and control, the flagship Golf R is recognised everywhere for its 'R' badge. And well it might be, for this is not a car to be trifled with. With an engine channeling 206kW of power and 380Nm of torque, it promises a ride-by-the-seat-of-your-pants driving experience. The Golf R packs the latest in 4MOTION all-wheel drive technology, ensuring optimum traction and grip.

The Golf R backs up its performance claims with head-turning style. Bi-Xenon headlights come as standard and the car rides on its own distinctive 19-inch 'Cadiz' wheels. The pronounced wheelarch flares remain, along with the extra wide C-pillars that resemble the drawn string of a bow.

Together, the three vehicles that make up the Golf performance range offer the freshest interpretation of the high-performance hatchback. Rich in pedigree, these cars are capable of provoking primal responses in all who drive them. Make your choice... and get ready to be astounded.





Range Overview

Golf GTI

The first GTI to feature BlueMotion Technology, the new GTI offers increased power and torque, a complete range of driver assistance systems, and greater steering response from a new progressive steering system.



Optional Bi-Xenon headlights shown.

Golf GTI Performance

Combining all the excitement of the Golf GTI with additional equipment, the Golf GTI Performance offers increased power output and can achieve higher cornering speeds courtesy of its electronically controlled mechanical front differential lock.



Golf R

The new Golf R is quite simply the fastest, sportiest Golf ever. Controlled and balanced, the Golf R represents ultimate styling and non-stop, heart-thumping excitement from idle to redline. Bold design cues, such as new bumper designs front and rear and striking 19-inch

'Cadiz' alloy wheels, signal that this is a car to be reckoned with. Technology, too, is state of the art. With 4MOTION all-wheel drive technology at your disposal, you'll never feel more at one with the road than in a Golf R.



Golf GTI

Often Copied. Never equalled.



Optional Bi-Xenon headlights shown.



It's time to hit the road. There has only ever been one Golf GTI and nearly forty years after its debut, it's still turning heads.

If you're serious about driving, you know about the GTI. Its long history and potent mix of comfort, safety, style, value and blistering performance set it apart from its rivals. This is a car with little to prove but much to offer.

The new GTI wears its heritage lightly and demonstrates just how good a car can be when new ideas and proven technologies are carefully combined. It's a kind of automotive alchemy and it means the GTI sets the benchmark for performance hatchbacks. We all know it's not just about the numbers, though the GTI's numbers (power, acceleration, weight) look very good indeed.

It's also about how the car feels and how it makes you feel. It's all about the drive. And it's a drive like no other. Every individual element, from the 2.0-litre, 162kW turbocharged TSI engine and 6-speed manual or optional DSG transmission to the Adaptive Chassis Control and Driving Profile Selection, Progressive Steering and ESP Sport Program, is strong on its own.

But somehow they come together to create a car and an experience that's much, much more than the sum of its parts.

Of course, it wouldn't be a GTI if it didn't look the part. With its classic Golf lines, famous badge, distinctive 18-inch 'Austin' alloy wheels, honeycomb pattern front grille and red stripe motif,

there's no mistaking it for any other model. The GTI isn't just a car that wants to be driven—it looks like it wants to be driven.

Inside, quality touches and unexpected features abound. Sports seats, colour Multi-Function Display (MFD Premium), red stitching, GTI badging and red ambient lighting set the scene. Throughout you'll find careful design, pleasant-to-touch upholstery and decorative inlays, not to mention a thoroughly modern feature set (including advanced infotainment systems, ergonomic seats and easy-to-use controls).

Putting it all together, it means that no matter whether you're zipping down to the local oval, making a long freeway haul or tackling your favourite back roads, you'll arrive feeling energised, not exhausted. You'll also benefit from a luggage capacity of 380 litres so you won't have to skimp on the supplies. Driving has rarely felt better.

When it comes to safety the GTI has an array of advanced safety systems to help prevent crashes, such as Multi-collision Brake which works seamlessly to protect occupants in the event of a collision.

We could go on but really, the best way to understand the GTI is to experience it.

So go on, drive it... it's what this car was made for.

Golf GTI Performance

More GTI talent. More performance.





Who can say no to more of a good thing? Building on the all-round excellence of the new Golf GTI, the Golf GTI Performance offers extended ability and equipment to satisfy the most enthusiastic driver. It's an enhancement that offers another layer of style and cutting-edge technology for more high-octane excitement.

Firstly, the Golf GTI Performance ups the ante with 169kW from its 2.0-litre turbocharged direct-injection engine with BlueMotion Technology. Compared with the GTI, peak torque of 350Nm is delivered through a slightly broader rev band (1500–4600rpm), helping the Golf GTI Performance to dismiss the 0–100km/h sprint in just 6.4 seconds.

Extra power and the abundance of torque translates into even more responsive acceleration and greater driver exhilaration thanks to the exclusive use of the quick-witted 6-speed DSG transmission.

And with added power comes control. The extra kilowatts are matched by larger, all-ventilated brake discs featuring distinctive red brake callipers aboard the 19-inch 'Santiago' alloy wheels. They look good, too. GTI logos on the front brakes reveal this to be a vehicle as stylish as it is exciting.

All the models in the Golf performance range are notable for their excellent driving response, no more so than the Golf GTI Performance, which incorporates an electronically controlled front differential lock. It's the first Volkswagen to be equipped with this feature, and the benefits of it

abound. Not only does the technology provide more predictable and agile steering, it significantly improves traction, allowing drivers to achieve higher cornering speeds in sporty driving situations.

Tight corners, sweeping curves, hairpin bends—these are all places you'll quickly discover the Golf GTI Performance feels right at home. The vehicle's precise new Progressive Steering puts you in touch with the most demanding road. And with Driving Profile Selection at your fingertips, you can change the character of the Golf GTI Performance to offer precisely what you want, when you want it. So terrific ground-covering ability can be combined with a compliant ride for a thoroughly rewarding drive.

The Golf GTI Performance is distinguished by standard Bi-Xenon headlights with dynamic cornering function. They are supported by distinctive LED daytime driving lights and the red horizontal keyline in the grille continues through each headlight. The sleek profile is aided by dark-tinted rear side and rear window glass that is 65 percent light absorbing. And at the rear, you'll find appealing dark-tinted LED tail lights.

Inside, the figure-hugging sports seats are trimmed in 'Clark' tartan fabric with Alcantara for the side panels and head restraints. And there's still more to discover with this complete package. Fast, agile and smooth, the Golf GTI Performance brings one extra word and a whole new dimension.

Golf R

Quite simply, the ultimate Golf.





From the truly outstanding to the extraordinary. The new Golf R unlocks maximum performance potential in a package that unmistakably marks the peak of the model series. And it's been the case for four generations now.

The new Golf R continues in this dynamic tradition with its 2.0-litre TSI engine transferring an impressive 206kW of power and 380Nm of torque to the road. To satisfy every driver, there's the option of a slick 6-speed manual gearbox or a 6-speed DSG transmission for rapid, seamless gear shifting.

Never has a vehicle felt so good on twisty roads, with the Golf R's progressive steering delivering noticeably more direct and agile steering response in dynamic driving situations. The brake system, too, has been modified for the highest level of driving performance. Internally, ventilated discs are applied all around and the R-specific brake callipers are painted in high-gloss black with prominent R logos.

With adaptive chassis control, the suspension assumes a specially tuned characteristic for each of the driving modes chosen via the Driving Profile Selection. Drivers can select from Normal, Eco, Individual, Comfort and Race modes to suit the conditions ahead and how they wish for the car to behave.

The 4MOTION technology ensures that drive power is diverted to the wheels that need it most, ensuring the vehicle retains as much traction as possible, even when the road surface is loose or slippery.

Bespoke R styling features mean the new Golf R offers a strong sporting style and character of its own. For the exterior, the customisation includes new bumper designs and newly designed 19-inch 'Cadiz' alloy wheels. The front spoiler wears a chrome strip and the radiator grille and the louvres of the large air intakes are presented in gloss black. A chrome strip also runs along the lower edge of the grille and through the Bi-Xenon headlights with their distinctive 'double U' LED daytime driving lights.

On its sides, the Golf R is identified by its Cadiz wheels, side skirt extensions in body colour and matte chrome mirror housings. At the rear, the roof spoiler features black aerodynamic extensions and dark tinted LED tail lights feature a clear strip through the lower half while a simple R badge graces the tailgate. The eye is further drawn to the dual chrome exhaust tail pipes on each side that double as a visual and acoustic highlight.

The interior of the Golf R underscores the car's sporting pedigree and consummate class, beginning with the R leather multi-function sports steering wheel and sports seats in 'Race' black fabric/grey Alcantara combination with R logo. Other design features include stainless steel front sill strips upgraded with blue illumination.

With touches this sumptuous and welcoming, and with scintillating performance just waiting to be unleashed, the Golf R truly is a car for the discerning driver.

Exterior

Individual style. Instantly recognisable.

Pay attention to the details and you'll make a strong and lasting impression. With every exterior detail, the Golf GTI, Golf GTI Performance and Golf R models are dressed to impress, emphasising each car's individual character and reflecting its high-performance values.

From the instantly recognisable front end to the perfectly proportioned rear, each Golf performance model is perfectly in tune with its performance. Sitting on lowered sports suspension and gripping the road with low-profile tyres wrapped around alloy wheels, each model sits confidently, like a coiled spring just waiting to be released.





01. Golf GTI Design

The GTI retains its unique bumper design with front spoiler and black louvres. The radiator grille and lower air intake with honeycomb insert are automotive classics, while the signature red strip runs across the grille's lower edge. The LED front fog lights don't just add visual impact, they also improve visibility. The GTI's upright rear end design is strong and shapely, punctuated by dark tinted tail lights, rear diffuser and dual chrome exhaust pipes and capped off by a roof spoiler with aerodynamic extensions.

02. Golf GTI Performance Design

Instantly eye-catching, the Golf GTI Performance design adds drama, yet retains a sense of understated cool. One look at the larger, ventilated brake discs featuring GTI badging on the front red callipers is enough to make you want to jump in and start driving.

Bi-Xenon headlights with dynamic cornering lights help illuminate the road ahead, while distinctive LED front fog lights improve visibility when the weather closes in. The red horizontal keyline in the grille continues through each headlight. The sleek profile is aided by dark-tinted rear side and rear window glass and appealing dark-tinted LED tail lights are a finishing touch at the rear.

03. Golf R Design

There can be no mistaking the spirited Golf R. From the front to the rear, the Golf R is understated, yet eye-catching, it exudes confidence and style in equal measure. The Golf R incorporates new bumper designs and newly designed 19-inch 'Cadiz' alloy wheels. The front

spoiler wears a chrome strip and the radiator grille and the louvres of the large air intakes are presented in gloss black. A chrome strip also runs along the lower edge of the grille and through the Bi-Xenon headlights with their distinctive 'double U' LED daytime driving lights. On the right side of the grille sits the R logo in chrome.

In profile, the Golf R is identified by its side skirt extensions in body colour and matte chrome mirror housings. At the rear, dark tinted LED tail lights feature a clear strip through the lower half while a simple R badge graces the tailgate. The eye is further drawn to two pairs of chrome tail pipes that double as a visual and acoustic highlight, flanking a rear diffuser with gloss black detail.

04. Parking distance sensors

Nobody likes to be guessing when parking their car, so all GTI performance models have been fitted with parking distance sensors. Working in conjunction with the Rear View Camera (RVC) and the Discover Media unit, the sensors will alert the driver when the car is approaching an obstacle while parking, reducing the chances of an unwanted bump and helping protect the carefully engineered bodywork.

05. Alloy wheels

New 18-inch 'Austin' alloy wheels (05a) feature on the new GTI and inherit a strong lineage of design and performance. Strong and light, they also allow large brake callipers to be fitted inside the wheel. The Golf GTI Performance is adorned by 19-inch 'Santiago' wheels (05b), while the flagship Golf R sits on slightly broader 19-inch 'Cadiz' alloys (05c).

Interior

A sensory experience.

If it's what's on the inside that counts, then the Golf performance models count for a lot. The Golf has always set the standard with regard to workmanship and quality and the new driver-oriented cockpits increase operating comfort and enable a more active driving experience.

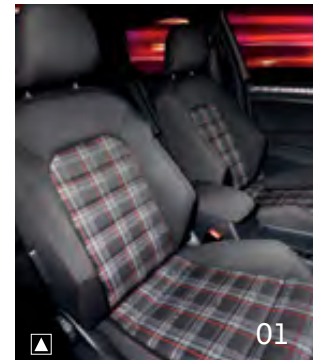
You'll appreciate the firm support of carefully contoured seats during spirited driving. As well as being fully adjustable they offer superb levels of comfort.

Every interior element, from controls to seats and from lighting to trim, has been carefully considered to ensure driver and passengers feel snug and comfortable at all times.

The new fascia design is an example of meticulous attention to seemingly small details. Every dial, button and graphic is intuitively positioned, ensuring everything falls easily to hand.



Golf GTI and Golf GTI Performance interior shown.



01. Golf GTI Interior

Classic 'Clark' tartan cloth trim, with its classic red, black and grey design adorns supremely supportive sports seats with all manner of adjustability. The leather-bound multi-function steering wheel, golf-ball look gear knob (manual only), illuminated door sill trim and red ambient lighting appeal to all of the senses.

02. Golf GTI Performance Interior

Forget the association of extra effort with extra performance and enjoy the comfort and support of figure-hugging sports seats trimmed in 'Clark' tartan fabric with Alcantara for the side panels and head restraints. A red-coloured theme applies to instrumentation and lighting strips, reminding you at once that you are sitting in a Golf performance vehicle.

03. Golf R Interior

Those who have chosen a Golf R value something truly unique. Special interior features underscore the car's premier positioning beginning with the R leather multi-function sports steering wheel and sports seats in 'Race' black fabric/grey Alcantara combination with R logo.

Other design features include stainless steel front sill strips upgraded with illumination and the R logo, and brushed aluminium on all pedal caps. The colours 'Carbon Touch' and 'Piano Black' are used for dashboard accents and decorative elements and black roof headlining is fitted.

Elsewhere, there are hints as to the Golf R's exclusivity. The gearshift knob is finished with a combination of leather and aluminium, and instruments are R-specific with blue needles and an R welcome screen. LED interior lighting and blue ambient lighting convey a sense of style that can only come with the Golf R.

04. Space

Space is always a great luxury, especially in a vehicle that unashamedly advocates performance. You'll be pleased to learn that Volkswagen's designers have been just as uncompromising in this area as they have with technology and styling.

Golf performance models all offer excellent luggage space, as well as a split/folding rear seat and load-through provision. The Golf GTI and Golf GTI Performance models even offer variable boot floor height for added convenience when you're planning a shopping trip or heading to the golf course.

Infotainment

Communication. Loud and crystal clear.

As every Golf performance model is built to be driven, Volkswagen's engineers have taken care to ensure that everyone's drive will be as enjoyable as possible. In each model you receive state-of-the-art information, navigation and entertainment on demand. Innovative touchscreen technologies with simplified operations display a broad range of vehicle information on the premium display. It's an engaging system that benefits from being genuinely intuitive to operate.

Of course, easy access and convenience are important considerations when you're alone in the car and decide to access your media or other information. There's no point in having a high-end audio system, after all, if you can't indulge your music tastes while on the move.



Golf R shown.



01. Discover Media

When it comes to exploring this vast land, navigation has never been easier, thanks to the Discover Media package with two SD card slots for navigation and media; 2D and 3D bird's-eye map views; and a 5.8" colour display with capacitive touch screen. When you include a CD player, Auxiliary input, USB interface, MP3, WMA and AAC music playback, you've got an amazing media and navigation package.

02. Colour Multi-Function Display (MFD Premium)

Information at a glance. When you're driving you need as much information as possible—with as few distractions as possible. The latest generation of Volkswagen's colour Multi-Function Display (MFD Premium) provides both. With a generous screen that's both highly functional and extremely easy to use, control the phone, radio or navigation system, or simply display the vehicle information (outside temperature, fuel range and more) you want all controlled through the sports steering wheel.

03. Vehicle information (not pictured)

Access car status and convenience menus on the media screen, including lighting, tyre pressure indicator, air conditioning menu, as well as Optical Parking System and Bluetooth® connectivity. Add to this menu options that automatically appear when your hand is close to the screen thanks to proximity sensors.

04. Lap Timer (not pictured)

Need to know how long it takes to get to your favourite roads and destinations? If you're serious about your driving then you'll find the built-in lap timer to be a great driving tool. An additional function in the MFD, it includes an integrated stopwatch and is operated by controls on the multi-function steering wheel.

05. Bluetooth® and audio streaming

Minimising distractions is important when you're driving, so each Golf performance model allows you to connect your Bluetooth®-enabled phone or media player to the sound system. This means you can enjoy hands-free calls and your favourite media without the inconvenience of cables.

06. Rear View Camera (RVC) (not pictured)

Why take chances? The Rear View Camera (RVC) helps ensure you always have a good view of what's behind your car. It doesn't matter whether you're reversing out of a busy parking lot or trying to squeeze into a tricky spot, it's always helpful to have an extra set of eyes.

Technology

The figures add up to one thing. Exhilaration.

Volkswagen's hallmarks are technology and design, and the Golf performance models embody the best technologies available, producing cars that brilliantly showcase quality, performance and value.

Whether it's their high-performance TSI engine, transmission, steering, suspension, BlueMotion Technologies or other systems and features, the Golf performance models make intelligent use of the latest developments to produce unforgettable,

uncompromised driving experiences. Among the many new technological highlights incorporated in the new models are progressive power-assisted steering, a front differential lock for the GTI Performance and a new version of 4MOTION all-wheel drive for the Golf R.

It's not technology for technology's sake—it's technology for the driver's sake.



Golf GTI Performance shown.





BLUEMOTION

— TECHNOLOGIES —

07

01. 2.0-litre turbocharged TSI engine

Golf GTI and Golf R have a history of performance and the latest models don't disappoint. Each is powered by the latest evolution of Volkswagen's famed 2.0-litre turbocharged TSI engine, which delivers outstanding power and torque in three states of tune. The GTI kicks things off with 162kW and a massive 350Nm of torque.

The Golf GTI Performance matches this torque figure and pumps out 7 more kilowatts for peak power of 169kW. And the flagship Golf R packs the mightiest punch of all with an astounding 206kW and 380Nm. Such figures are not for the faint-hearted.

02. 6-speed manual (not pictured)

If you like a manual gearbox, you'll love the 6-speed unit available on the Golf GTI and Golf R. With close ratios down low, the box's gearing gets progressively taller until you hit sixth gear. Mated to a smooth and progressive clutch, it's a gearbox made for drivers who simply love driving.

03. 6-speed Direct Shift Gearbox (not pictured)

Volkswagen's 6-speed Direct Shift Gearbox (DSG) has set the industry standard for responsive, dual-clutch automated manual transmissions for several generations. Available on all Golf performance models, the DSG helps ensure you're always in the right gear for the conditions. Of course, you can shift with the steering wheel-mounted paddles if you want more direct input into proceedings, but otherwise you can let the DSG take care of things.

04. Progressive steering (not pictured)

For pin-sharp handling, progressive power steering is more direct than conventional direct-ratio setups. Its variable ratio reduces the need to move your hands around the wheel when cornering and increases comfort when parking. Perfectly weighted and offering excellent road feel, this steering system will keep you firmly pointed in the desired direction.

05. Adaptive Chassis Control & Driving Profile Selection (not pictured)

This technology allows you to combine your preferred Driving Profile Selection (Comfort, Normal, Sport, Eco and Individual) and Adaptive Chassis Control settings (Normal, Sport and Comfort) to set the car up to match your driving needs. A unique setting in the Golf R is Race mode, which replaces Sport mode in the other two Golf performance models.

06. 4MOTION

The 4MOTION all-wheel drive system has been further enhanced in the new Golf R. When operating under a relatively low load or when coasting, power is primarily distributed to the front axle, and this basic drive layout saves fuel. However, the rear axle can be variably engaged in fractions of a second whenever necessary, even before any wheel starts to slip, and this eliminates nearly all loss of traction.

07. BlueMotion Technologies

BlueMotion Technologies are a range of innovations and intelligent technologies designed to achieve greater fuel efficiency and emit less pollution, and therefore to be kinder to the environment. All Golf performance models come with key BlueMotion Technologies such as engine Start/Stop system and brake energy recuperation.

08. Front Differential Lock (not pictured)

The Golf GTI Performance is the first Volkswagen to be equipped with electronically controlled mechanical front differential lock. The technology sets the benchmark for front-wheel drive vehicles, delivering outstanding roadholding during high-speed cornering, improved acceleration out of turns, and eliminating understeer. In any driving situation, you can feel supremely confident that the technology is working to maximise traction, offering you a safer and more pleasurable drive.

Safety

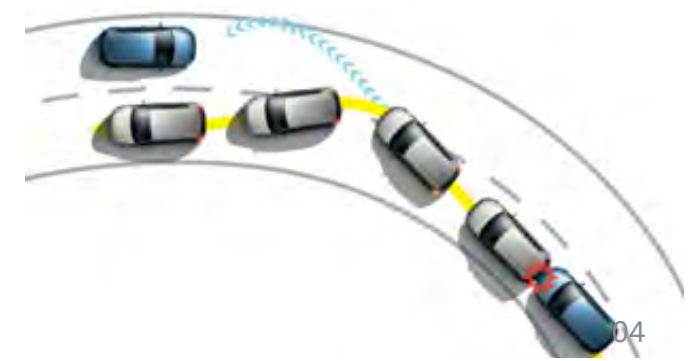
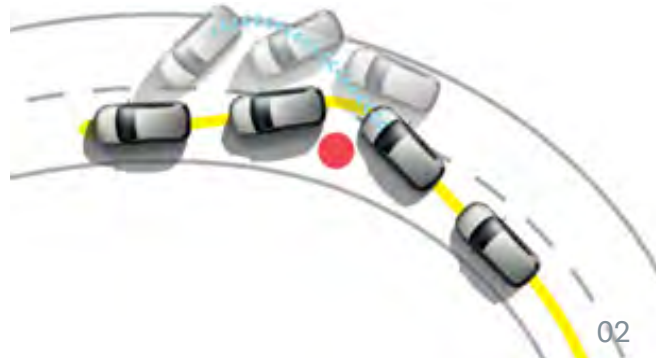
Active and passive safety systems have you covered.

There is nothing more important than the safety of you and your passengers. And just as each Golf performance model makes no concessions in the performance stakes, so too does each model prioritise safety for driver and passengers alike.

Whether it's systems designed to help avoid accidents (like ESP, Driver Fatigue Detection and Daytime Driving Lights) or systems designed to reduce the effect of

accidents (like airbags and safety optimised front head restraints) the Golf performance models will do everything they can to keep you and your passengers safe.





01. 7 airbags (not pictured)

Each Golf performance model is fitted with seven airbags (including front, front side, front curtain, rear curtain and driver's knee) to surround occupants with the best technology available to minimise the effects of a collision. Automatically deployed, their effectiveness in keeping vehicle occupants safe from impact damage has been proved time and time again.

02. Electronic Stabilisation Program (ESP with ESP Sport Program)

Volkswagen's Electronic Stabilisation Program will help keep your Golf Performance model on the road. The system monitors each wheel and reduces the chance of losing control, either through skidding or over-correcting. The ESP can individually and automatically brake wheels that have lost traction, while the system's Sport function gives you control over the system's operation, allowing you to dial it back and give you a sporty drive in controlled situations.

03. Driver Fatigue Detection system (not pictured)

Driver fatigue can kill. This intuitive system is designed to alert the driver when the level of driver responsiveness appears to change, indicating fatigue. The technology works by automatically analysing individual driving characteristics, including the evaluation of steering movements.

When fatigue is detected the system kicks in with a warning sound and, in the Multi-Function Display unit, recommends you take a break. How smart is that?

04. Multi-collision Brake

This state-of-the-art system applies the brakes to prevent or mitigate a secondary impact during a collision. If an initial collision has been detected by the airbag sensors, the vehicle is automatically slowed so that a secondary impact will be lessened or avoided. During braking, the hazard lights and brake lights are illuminated and remain activated even after braking has ceased. It's smart technology when you need it most.

05. Daytime driving lights (not pictured)

Even during the day, sometimes other drivers just don't see you. Daytime driving lights add an extra level of visibility, while being energy efficient, and leave you confident that if your car's sleek design doesn't catch other drivers' attention, your lights will. Unique 'double-U' headlights in the Golf R mean oncoming drivers won't mistake your car for any other.

06. Safety optimised front head restraints (not pictured)

By working in unison with your vehicle's seatbelts, front safety optimised head restraints are designed to reduce whiplash injury—ensuring optimal protection when you need it most.

Optional Equipment

Make it yours.

You might think there is nothing to add to the Golf performance models. But there's always an opportunity to personalise a performance Golf. It is, after all, a very personal statement about your style and values.

While the Golf GTI, Golf GTI Performance and Golf R all come with an impressive array of features, technologies and inclusions as standard, there may be some extras

that will help make sure your car meets your precise requirements. Each of these options has been carefully designed to integrate perfectly, further enhancing your car's looks and performance. Owning a performance Golf is a statement of intent, so it's only fitting that the car you drive says exactly what you want it to say.



Golf R with optional black Vienna leather appointed upholstery shown.

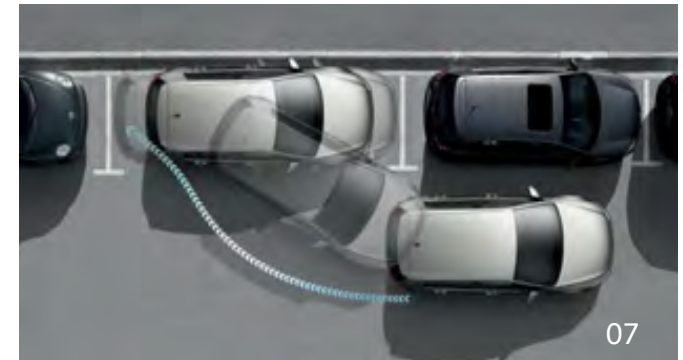


Image is for illustration purposes only.

01. Bi-Xenon headlights with LED daytime driving lights (not pictured)

Bi-Xenon headlights (optional on Golf GTI) combine high and low beams in one unit and include distinctive LED driving lights. But it's not just for show; Dynamic Cornering Lights improve visibility in all conditions, while the Bi-Xenon headlights allow a single, high-intensity lamp to provide both high and low beams.

02. Driver Assistance Package (not pictured)

If you want the extra reassurance and safety offered by Volkswagen's most advanced technologies, the Driver Assistance Package adds Adaptive Cruise Control (ACC), Front Assist with City Emergency Brake, Proactive Occupant Protection System and Park Assist 2†.

03. Adaptive Cruise Control (ACC)* (not pictured)

ACC is an extension of conventional cruise control, with advanced capabilities based on a radar sensor that allows your Golf to automatically brake and accelerate to keep to a pre-selected distance from other cars. If you approach a slower vehicle, the ACC brakes the car to the same speed, and maintains the pre-selected distance. In DSG models if the vehicle in front comes to a standstill the system will actively brake your vehicle to a stop. Once the accelerator pedal is pressed the system will re-activate.

04. Front Assist with City Emergency Brake* (not pictured)

Using the same radar sensor as the ACC, Front Assist observes the distance from, and relative speed of, vehicles driving in front you—so should a rear-end collision be likely, the system kicks in to help you avoid the potential collision or reduce its intensity.

05. Proactive Occupant Protection System* (not pictured)

This intelligent system uses sensors to monitor and detect situations with elevated accident potential. If such a situation is determined, the vehicle and its occupants are prepared for a possible collision: the front seat belts increase in tension to securely hold the driver and passenger, and the optional sunroof and any open windows are closed to just a crack. Seatbelt tensions are reversed once a safe condition is restored.

06. Panoramic Electric Glass Sunroof^ (Golf R shown)

The electrically operated panoramic glass sunroof available on Golf GTI and Golf R models bathes the interior in natural light, adds extra ventilation and creates a real sense of space and freedom. Tinted glass and built-in sun protection shelters you from harmful rays, while a wind deflector lets you enjoy the elements while at highway speed.

07. Park Assist 2†

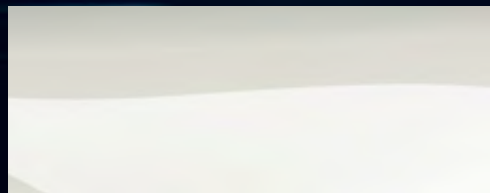
Say goodbye to problematic parking. Park Assist 2 uses sensors mounted on the front, rear and sides of GTI and GTI Performance models to automatically alert you if a parking space is the right fit. It's ideal for both parallel parking and 90-degree parking. All you have to do is control the speed, and the car steers and manoeuvres for a perfect park every time.

08. Black Vienna leather appointed upholstery (Golf R shown)

It's hard to beat the classic appeal—not to mention comfort—of a classic black Vienna leather appointed interior. Adding a touch of drama and sensuality to proceedings, the optional Vienna leather appointed upholstery transforms each Golf performance model's interior from airy and purposeful to sophisticated and inviting.

*Only available as a part of the optional Driver Assistance package. ^Not available on Golf GTI Performance. †Not available on Golf R

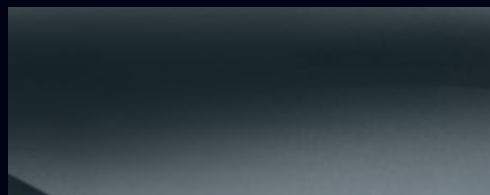
Colours & Upholstery



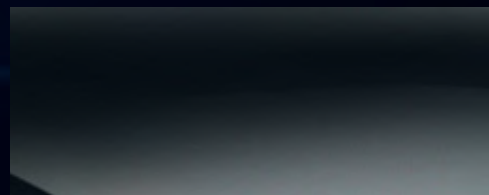
→ Pure White



→ Tornado Red



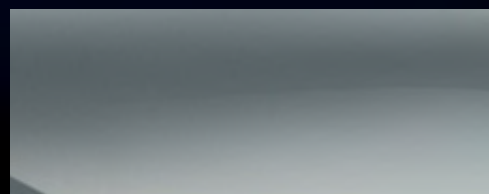
→ Carbon Steel Metallic †



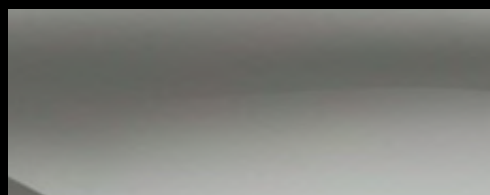
→ Deep Black Pearl Effect



→ Night Blue Metallic †



→ Reflex Silver Metallic



→ Limestone Grey Metallic* ^



→ Lapiz Blue Metallic* ^

→ Optional Black Vienna leather appointed seat upholstery.

→ Black/Red 'Clark' sports cloth seat upholstery available on Golf GTI only.

→ Black/Red 'Clark' sports cloth/Alcantara available on Golf GTI Performance only.

→ Black/Grey 'Race' sports cloth/Alcantara upholstery available on Golf R only

Please note that Metallic and Pearl Effect paint are optional at extra cost, except Golf R. The print process does not allow for exact reproduction of the exterior or the upholstery colours. Please contact your Volkswagen Dealer for further information on colours and upholstery combinations.



Black/Red 'Clark' sports cloth seat upholstery available on Golf GTI.

Features & Specifications

Safety and Security	GTI	GTI Performance	R
→ Airbags			
Driver and front passenger airbags	S	S	S
Driver's knee airbag	S	S	S
Driver and front passenger side airbags	S	S	S
Curtain airbags, front and rear	S	S	S
→ Anti-theft			
Alarm system with interior monitoring and tilt sensor	S	S	S
Electronic engine immobiliser	S	S	S
→ Body			
Fully galvanised body with 12 year anti-corrosion perforation warranty	S	S	S
Door side impact protection	S	S	S
Rigid safety cell with front and rear crumple zones	S	S	S
→ Brakes			
Automatic flashing brake lights activated in emergency braking situation	S	S	S
Anti-lock Braking System (ABS)	S	S	S
Brake Assist	S	S	S
Electronic Brake-pressure Distribution (EBD)	S	S	S
Electro-mechanical parking brake	S	S	S
Auto hold function	S	S	S
Multi-collision brake	S	S	S
Red brake callipers	S	–	–
Red brake callipers, front with GTI logo	–	S	–
Black brake callipers, front with R logo	–	–	S
→ Child restraints			
Child seat top tether anchorage points, mounted on rear seat back (3)	S	S	S
ISOFIX child seat anchorage points, outer rear seats	S	S	S
→ Entry/warning reflectors in front and rear doors	S	S	S
→ First aid kit	A	A	A
→ Head restraints			
Front safety optimised head restraints, height adjustable	S	S	S
Rear head restraints height adjustable (3)	S	S	S
→ Lighting			
Daytime driving lights, halogen light integrated in headlight housing	S	–	–
Daytime driving lights, LED integrated in headlight housing	–	S	S
Front fog lights, LED mounted in lower bumper	S	S	–
Fog lamp, rear	S	S	S
Rear registration plate light, LED	A	S	S
Rear tail lights, LED	–	S	S

Safety and Security	GTI	GTI Performance	R
→ Locking			
Remote central locking with SAFELOCK deadlock mechanism	S	S	S
Keyless Access, keyless entry and starting system including starter button	–	–	S
2 stage unlocking (programmable)	S	S	S
Automatic locking after take-off (programmable)	S	S	S
One touch lock / unlock for driver	S	S	S
Child safety locks on rear doors	S	S	S
Fuel filler flap lock/unlock by remote, push to open	S	S	S
→ Seat belts			
Front height adjustable with pre-tensioners and belt force limiters	S	S	S
Visual and acoustic warning for driver and front seat passenger seat belts not fastened	S	S	S
3 point seat belts for all passengers	S	S	S
→ Traction control			
Anti-Slip Regulation (ASR)	S	S	S
Electronic Differential Lock (EDL)	S	S	S
Electronic Stabilisation Program (ESP)	S	S	S
Extended Electronic Differential Lock (XDL)	S	S	S
Front differential lock	–	S	–
4MOTION all wheel drive	–	–	S

Exterior Equipment/Styling	GTI	GTI Performance	R
→ Body enhancements			
Body coloured bumper bars and door handles	S	S	S
Body coloured exterior rear view mirrors	S	S	–
Matte chrome finish exterior rear view mirrors	–	–	S
Body coloured lower front spoiler with black aerodynamic louvres	S	S	–
Body coloured lower front spoiler with chrome strip and gloss black inserts	–	–	S
Exposed chrome exhaust tail pipes, left and right	S	S	–
Exposed dual chrome exhaust tail pipes, left and right	–	–	S
Radiator grille with red/chrome strip and GTI nameplate	S	S	–
Radiator grille with chrome strip and R nameplate	–	–	S
Lower air intake and radiator grille with black honeycomb inserts	S	S	–
Lower air intake and radiator grille with gloss black inserts	–	–	S
Side sill panel extensions in black finish	S	S	–
Side sill panel extensions in body colour	–	–	S
Rear bumper with black sports diffuser and honeycomb insert	S	S	–
Rear bumper with gloss black sports diffuser	–	–	S
Rear roof spoiler with black aerodynamic extensions	S	S	S
Rear hatch protective trim in chrome	A	A	A

Features & Specifications

Exterior Equipment/Styling (Continued)	GTI	GTI Performance	R
→ Paint			
Metallic or Pearl Effect paint finish	O	O	S
→ Protection			
Bonnet protector	A	A	A
Car cover	A	A	A
Headlight protectors <small>Headlight protectors are not compatible with the optional Bi-Xenon headlights</small>	A	–	–
Loading sill protection, clear film or stainless-steel look guard	A	A	A
Slimline weather shields, front and rear	A	A	A
Door sill protection film, black with silver highlights	A	A	A
Mudflaps, front	A	A	–
Mudflaps, rear	A	A	–
→ Roof			
Roof bars	A	A	A
Bicycle, kayak, ski, surfboard and snowboard holders	A	A	A
Luggage box range – 340, 460 litre volumes	A	A	A
→ Tinted glass			
Darkened rear tail light clusters	S	S	S
Dark tinted rear side window and rear window glass, 65% light absorbing	–	S	S
Heat insulating tinted glass	S	S	S
→ Wheels			
Alloy wheels (Austin) 18x7½" with 225/40 R18 tyres	S	–	–
Alloy wheels (Santiago) 19x7½" with 225/35 R19 tyres	–	S	–
Alloy wheels (Cadiz) 19x8" with 235/35 R19 tyres	–	–	S
Alloy wheels (various designs) 18" and 19" <small>Please consult your Volkswagen Dealer for correct wheel and tyre fitment by model</small>	A	A	–
Anti-theft wheel bolts	S	S	S
Valve caps with Volkswagen emblem	A	A	A
Low tyre pressure indicator	S	S	S
Weight and space saving spare wheel	S	S	S
Comfort and Convenience			
→ Armrest			
Front centre armrest, adjustable with storage box and rear air outlets (2)	S	S	S
Rear seat centre armrest with cup holders (2) and load through provision	S	S	S
→ Air conditioning			
Air conditioning, dual zone automatic climate control	S	S	S
Air quality and humidity sensor with automatic air recirculation	S	S	S
Dust and pollen filter	S	S	S

Comfort and Convenience (Continued)	GTI	GTI Performance	R
→ Cruise control			
Cruise control	S	S	S
Speed limiter (programmable)	S	S	S
→ Cup holders			
Front (2)	S	S	S
Rear (2)	S	S	S
Bottle holders in front door pockets	S	S	S
→ Driver assistance systems			
Adaptive chassis control	S	S	S
Driver Fatigue Detection system	S	S	S
Driving profile selection	S	S	S
ECO tip function, fuel efficiency advice	S	S	S
Parking distance sensors, front and rear with acoustic warning and audio volume level reduction when sensor warning is activated	S	S	S
Optical Parking System (OPS) in radio/navigation display	S	S	S
Automatic kerb function when reversing, passenger's side exterior mirror	S	S	S
Rear View Camera (RVC) with static guidance lines	S	S	S
→ Floor mats			
Front and rear, carpet	S	S	S
Front and rear, carpet with Golf badging and white trim highlight	A	A	A
Front and rear, rubber with Golf embossing	A	A	A
→ Grab handles			
Soft fold away grab handles, front and rear	S	S	S
→ Headlights			
Coming / leaving home function	S	S	S
Combined headlight and fog light switch	S	S	S
Halogen twin headlights with daytime driving lights and clear polycarbonate lens	S	S	S
Bi-Xenon headlights for high and low beam with dynamic and static cornering lights, integrated LED daytime driving lights, automatic self-levelling, headlight cleaning system and low washer fluid warning	O	S	S
Internal headlight range adjustment	S	–	–
Low light sensor with automatic headlight function	S	S	S
→ In car entertainment and technology			
Discover Media audio and satellite navigation system 5.8" colour touch screen display with smartphone style HMI and proximity sensor, AM/FM radio, CD player and 2 x SD card slot slots for music and navigation data, 2D and 3D (bird's eye) map views, compatible with MP3, WMA and AAC music files, car menu with convenience and service settings, security coded	S	S	S
Audio, telephone, cruise control and Multi-Function Display controls mounted on steering wheel	S	S	S
Auxiliary input audio socket in front centre console	S	S	S

Features & Specifications

Comfort and Convenience (Continued)	GTI	GTI Performance	R
→ In car entertainment and technology			
USB audio socket in front centre console	S	S	S
Bluetooth® phone connectivity with phonebook display, operation via touch screen audio unit or Multi-Function Display and Bluetooth® audio streaming	S	S	S
Speakers, front and rear (8)	S	S	S
Voice operation, telephone and navigation system functions can be operated using voice commands	A	A	A
USB charge cables, adaptor cables supporting connection to Apple lightning, Apple 30 pin and mini USB	A	A	A
→ Instrumentation			
Speedometer and tachometer, electronic odometer and tripmeter, service interval display, fuel and coolant gauges, low fuel warning light, brake pad wear indicator and white adjustable illumination	S	S	S
Comfort indicator function (1 x touch = 3 x flash)	S	S	S
→ Interior highlights			
Aluminium finish clutch, accelerator and brake pedals	S	S	S
Black headlining and pillar trim	S	S	S
Brushed chrome trim on instrument cluster, vent surrounds and gearshift lever surround	S	S	S
Chrome highlight trim on headlight switch and exterior mirror switch	S	S	S
Chrome highlight trim on power window switches	S	S	S
Decorative inlays, "checkered black" to instrument surround, centre console, passenger's side dashboard and doors	S	S	-
Decorative inlays, "piano black" to instrument surround and centre console, "carbon touch" to passenger's side dashboard and doors	-	-	S
Door sill scuff plates, front in aluminium finish with illumination	S	S	S
Gearshift knob with leather and aluminium finish	S	S	S
Manual gearshift knob with traditional golf ball design	S	-	-
→ Interior lighting			
With time delay	S	S	S
Front LED reading lights (2) and rear passenger LED reading lights (2)	S	S	S
LED ambient lighting in driver and front passenger foot well, front door decorative inlays, door openers and handles	S	S	S
→ Luggage compartment			
Load restraining hooks	S	S	S
Luggage compartment light	S	S	S
Luggage compartment protection: moulded foam liner, plastic tray, reversible velour/rubber mat with loading sill protective flap	A	A	A
Luggage cover, removable and storable	S	S	-
Luggage cover, removable	-	-	S
Luggage net	A	A	A
Shopping bag hooks	S	S	S
Storage box in side lining	S	S	S
Variable luggage compartment floor level	S	S	-
12 volt socket	S	S	S

Comfort and Convenience (Continued)	GTI	GTI Performance	R
→ Mirrors			
Automatic dimming interior rear-view mirror	S	S	S
Additional interior rear-view mirror	A	A	A
Electrically heated and adjustable exterior mirrors	S	S	S
Exterior mirrors with integrated LED turn indicators	S	S	S
→ Power steering			
Electro-mechanical, vehicle speed and steering input sensitive	S	S	S
Progressive steering	S	S	S
→ Seating			
Sports seats with additional side bolsting	S	S	S
Height adjustment for front seats	S	S	S
Lumbar adjustment for front seats	S	S	S
Split folding rear seat backrest (40/60)	S	S	S
Rear seat centre armrest with cup holders (2) and load through provision	S	S	S
→ Steering wheel			
3 spoke leather rimmed flat bottomed sports steering wheel with brushed aluminium inserts and decorative stitching	S	S	S
Audio, telephone, cruise control and Multi-Function Display controls	S	S	S
Gearshift paddles (with DSG)	S	S	S
Height and reach adjustable steering wheel	S	S	S
→ Storage			
Centre console storage compartment under armrest	S	S	S
Glove compartment with cooling, illuminated and lockable	S	S	S
Coin tray and 12 volt socket in console	S	S	S
Compartment in roof console	S	S	S
Drawers under front seats	S	S	S
Driver's side dashboard compartment with lid	S	S	S
Front door pockets with bottle holders	S	S	S
Front seat backrest storage pockets	S	S	S
Waste container in white, suits cup holder	A	A	A
→ Sunroof			
Panoramic glass sunroof			
Electrically slide and tilt adjustable	O	-	O
Integrated wind deflector and sunblind			
→ Transmission			
Gearshift recommendation indicator	S	S	S
6 speed manual transmission	S	-	S
6 speed Direct Shift Gearbox (DSG) with sport mode and Tiptronic function	O	S	O

Features & Specifications

Comfort and Convenience (Continued)	GTI	GTI Performance	R
→ Trip computer Multi-Function Display (MFD Premium) – colour display and screen transitions with animations, lap timer, trip time, trip length, average and current speed, average and current fuel consumption, distance till empty and outside temperature, digital clock, vehicle status, audio, telephone and navigation menus	S	S	S
→ Upholstery 'Clark' sports cloth seats with red decorative stitching	S	–	–
'Clark' sports cloth and Alcantara combination seats with red decorative stitching	–	S	–
'Race' sports cloth and Alcantara combination seats with grey decorative stitching	–	–	S
Vienna leather appointed seat upholstery with individually heated front seats and decorative stitching Some parts of the leather appointed seat upholstery will contain man made material.	O	O	O
→ Vanity mirrors Driver's and passenger's side vanity mirrors in sun visor with ticket holder	S	S	S
Illuminated on driver's and passenger's side	S	S	S
→ Wipers 2 speed aero wipers with wash/wipe	S	S	S
Rain sensor	S	S	S
Rear window with wash/wipe and intermittent wipe	S	S	S
→ Windows Power front/rear, with roll-back function and one-touch up-down	S	S	S
Remote operated convenience close and open feature (programmable)	S	S	S
Sunblind for rear window	A	A	A
Sunblind for rear side windows	A	A	A
→ 12V socket Centre console	S	S	S
Luggage compartment	S	S	S
Optional Packages			
→ Driver assistance package Adaptive Cruise Control (ACC) Front Assist with City Emergency Brake (City EB) function Park Assist 2, parking bay and parallel parking assistance (except Golf R). Park Assist 2 is not available for the Golf R. Proactive occupant protection system	O	O	O

Technical Specifications

	GTI		GTI Performance	R	
→ Engine	2.0 litre TSI BlueMotion Technology		2.0 litre TSI BlueMotion Technology	2.0 litre TSI BlueMotion Technology	
Type	4 cylinder inline turbocharged direct injection petrol with engine Start/Stop system*		4 cylinder inline turbocharged direct injection petrol with engine Start/Stop system*	4 cylinder inline turbocharged direct injection petrol with engine Start/Stop system*	
Installation	Front transverse		Front transverse	Front transverse	
Cubic capacity, litres/cc	1984		1984	1984	
Bore/stroke, mm	82.5/92.8		82.5/92.8	82.5/92.8	
Max power, kW @ rpm	162 @ 4500-6200		169 @ 4700-6200	206 @ 5100-6500	
Max torque, Nm @ rpm	350 @ 1500-4400		350 @ 1500-4600	380 @ 1800-5100	
Compression ratio	9.6:1		9.6:1	9.3:1	
Ignition system	Electronic		Electronic	Electronic	
Exhaust emission control	Exhaust gas recirculation, three-way catalytic converter and lambda probes		Exhaust gas recirculation, three-way catalytic converter and lambda probes	Exhaust gas recirculation, three-way catalytic converter and lambda probes	
Emission level^	EU 5^		EU 5^	EU 5^	
Fuel type (Recommended)	Premium unleaded 98 RON minimum		Premium unleaded 98 RON minimum	Premium unleaded 98 RON minimum	
→ Transmission	6 Speed Manual	6 Speed DSG	6 Speed DSG	6 Speed Manual	6 Speed DSG
Driven wheels	Front wheel drive		Front wheel drive	4MOTION all wheel drive	
→ Performance#					
0-100km/h, seconds	6.5	6.5	6.4	5.2	5.0
→ Fuel consumption**					
Combined, L/100km	6.2	6.6	6.6	7.3	7.1
Urban, L/100km	7.7	8.3	8.3	9.6	9.0
Extra Urban, L/100km	5.3	5.5	5.5	6.1	6.1
CO ₂ emission, g/km	144	153	153	170	164
Fuel tank capacity litres	50	50	50	55	55

^ Emission level according to European Regulation (EC) No. 715/2007 and Regulation (EC) No. 692/2008.

* The Start/Stop system is designed to reduce fuel consumption and CO₂ emissions. It achieves this by automatically switching off the engine while the vehicle is stationary and then starting it again automatically when the driver wants to drive off. There are certain operating conditions where the Start/Stop system is deactivated (e.g. during engine warm-up), please refer to the owner's manual for full operating information.

Please note figures are sourced from overseas data where equipment levels by model variant may vary.

** Fuel consumption figures according to Australian Design Rule (ADR) 81/02.

The driving style, road and traffic conditions, environmental influences, the fitment of accessories and vehicle condition can in practice lead to consumption figures which may differ from those calculated with these standards.

Technical Specifications

		GTI		GTI Performance		R					
→ Running Gear		2.0 litre TSI BlueMotion Technology		2.0 litre TSI BlueMotion Technology		2.0 litre TSI BlueMotion Technology					
Suspension	Front axle	Independent, MacPherson struts with lower A-arms. Anti-roll bar. Lowered sports suspension with adaptive chassis control.									
	Rear axle										
Steering		Electro-mechanical power assisted rack & pinion steering. Progressive steering.									
Brake systems		Anti-lock Braking System (ABS) with Electronic Brake-pressure Distribution (EBD), Brake Assist and Electronic Stabilisation Program (ESP). Brake energy recuperation.									
Brakes	Front	Ventilated discs		Ventilated discs		Ventilated discs					
	Rear	Discs		Ventilated discs		Ventilated discs					
Turning circle, metres		10.9		10.9		10.9					
→ Weights		6 Speed Manual		6 Speed DSG		6 Speed Manual		6 Speed DSG			
Tare Mass, kg		1313		1324		1364		1416		1435	
→ Exterior Dimensions											
Overall length, mm		4268		4268		4268		4264			
Width, mm		1799		1799		1799		1799			
Height, mm		1466		1466		1466		1442			
Wheelbase, mm		2626		2626		2626		2620			
Track, mm	Front	1538		1534		1534		1536			
	Rear	1516		1513		1513		1514			
→ Luggage Area Dimensions#											
Luggage area volume, L	Rear seat upright	380		380		380		343			
	Rear seat folded	1270		1270		1270		1233			
Luggage area floor length, mm	Rear seat upright	839		839		839		819			
	Rear seat folded	1558		1558		1558		1558			
Luggage area width, mm		At narrowest point		1003		1003		1003			
Luggage load height, mm	To luggage cover	587		587		587		587			
	To roof lining	900		900		900		900			

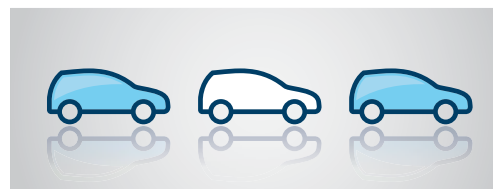
Please note figures are sourced from overseas data where equipment levels by model variant may vary.

Fuel Saving Tips

We can all Think Blue.

At Volkswagen, we aim to produce the most fuel efficient, environmentally sustainable vehicles possible. The good news is – we can all do our little bit to 'Think Blue'. Below, we have summarised the best tips for how you can drive more responsibly and reduce fuel consumption even further. It's not just your wallet that will benefit from these tips, but the environment too. Its practical benefits go far beyond just saving money and reducing emissions. Here are nine tips on how to drive more efficiently.

Be aware and save fuel. Think Blue.



01. Take it easy and save
Drive the modern way and think ahead.
Drive smoothly and anticipate hazards. Hard braking and acceleration, sudden lane changes and unpredictable behaviour is fuel-inefficient.



02. Change up early and fill up later
Drive in the highest gear possible.
Use a higher gear with a manual transmission. Low revs take far less energy. With an automatic, reduce acceleration and avoid a kick down.



03. Just let it roll
Use overrun fuel cutoff.
With the right driving techniques, you can really save. Whilst in gear, coast down hills or towards traffic lights to reduce feeding fuel to your engine.



04. Comfort high, fuel consumption low
Use auxiliary equipment in moderation.
Check the equipment you're using – if you don't need it, consider turning it off. De-misters, sound systems and air conditioning all use energy.



05. Savings are in the air
Check your tyre pressures.
Check your tyre pressures to cut fuel consumption. Under-inflated tyres force your car to burn more fuel. Tyres in good order will help you save fuel.



06. A warm engine – a cool way to save
Avoid short trips.
Plan to minimise the number of trips you need to make. Frequent short trips mean higher fuel consumption as cold engines run less efficiently.



07. Well-oiled for impressive savings
Use Volkswagen approved engine oils.
A well-lubricated engine produces less emissions especially when the weather is cold or the trip is short. Change your oil at regular intervals.



08. Keep it sleek
Cut aerodynamic drag.
Remember to remove roof racks, bike racks or roof boxes off your car when they're not in use. Keep windows up and sunroofs closed to reduce drag.



09. Lightly does it
Avoid unnecessary weight.
Every kilogram you load into your car takes energy to move – energy that will be supplied by burning fuel. The lighter you drive, the more you save.

Golf Capped Price Servicing*



The Golf comes with peace of mind included, with Capped Price Servicing* now available at participating Volkswagen dealers.

Authorised Volkswagen Service Centres have factory trained technicians equipped with the very latest diagnostic equipment, specialist tooling and Volkswagen Genuine Parts. They also undertake work in accordance to factory specified guidelines and maintenance schedules, so you can be confident that your Golf will be well taken care of.

* Capped price servicing is available at participating Volkswagen dealers on Golf manual and DSG models first sold by an authorised Volkswagen dealer on or after 12 October 2013. Capped price servicing applies to the first 6 standard scheduled services of your vehicle which are scheduled to occur at every 15,000km/12 month interval (whichever occurs first). Exclusions and conditions apply. For details on pricing, items not included in the capped price and for full terms and conditions please see volkswagen.com.au. Volkswagen Group Australia reserves the right to at any time modify or discontinue the Capped Price Servicing program.



Think Blue. Creating a sustainable future together



Volkswagen is committed to sustainability now and in the future, for us this means taking responsibility for the environment by getting involved in initiatives that contribute to a sustainable future through our products and behaviour.

We call this way of thinking, Think Blue. Volkswagen aims to become the leading automotive manufacturer for the environment and economy, making efficient and sustainable vehicles available to everyone. We want to inspire and motivate people to get involved in ecological sustainability, on the road and everywhere else.



Glossary

4MOTION[^]

An all wheel drive system that provides the best possible traction at all road speeds, in all weather and road conditions. An electronic Haldex clutch directs torque to the axle with the best traction.

When operating under a relatively low load or when coasting, power is primarily distributed to the front axle, thus saving fuel. However, the rear axle can be variably engaged in fractions of a second whenever necessary, even before any wheel starts to slip and therefore reducing the potential for a loss of traction. The wheels of the Golf R are prevented from spinning even when driving off and accelerating.

Activation of the Haldex clutch is based primarily on the engine torque demanded by the driver. In parallel, a system within the all-wheel drive control unit evaluates such parameters as wheel speeds and steering angle.

Adaptive Chassis Control

The electrically controlled dampers of adaptive chassis control constantly adjust to the road conditions, the driving situation and driver's requirements. Selected via and integrated within the functionality of the Driving Profile Selection, the driver can choose between three damper settings – Normal, Comfort and Sport (Race – Golf R).

Starting from the normal setting, the driver can change the basic character of the car towards sporty or more comfort-oriented driving. In each setting, the adaptive chassis control adjusts the damping to the particular driving situation (up to one thousand times per second) which means it offers an optimum level of driving comfort and enjoyment at all times. Particularly on windy roads and poor surfaces, using adaptive chassis control offers sporty and yet comfortable driving.

Adaptive Cruise Control (ACC)

Adaptive Cruise Control (ACC) is an extension of the conventional cruise control system with advanced capabilities based on a radar sensor. When ACC is activated, the vehicle automatically brakes and accelerates to a speed and distance set by the driver.

If the Golf approaches a slower vehicle, the ACC brakes the car to the same speed and maintains the pre-selected distance. Even when a vehicle pulls into the same lane in front of you or slows, your vehicle is automatically decelerated to the pre-selected distance. If the vehicle ahead moves out of your lane, the Golf then accelerates up to the preset desired speed.

Deceleration of the vehicle may take place via intervention in the engine management system.

If deceleration via engine torque is not sufficient, brake intervention takes place, braking the vehicle to a standstill if the traffic situation necessitates in vehicles equipped with a DSG transmission. ACC can be reactivated automatically by depressing the accelerator pedal. In vehicles fitted with a manual transmission, the system is automatically deactivated at speeds below 30 km/h and the driver is prompted to take charge by visual and acoustic signals.

The dynamics of the ACC system can be individually varied by selecting one of the driving programs from the driver profile selector.

Adaptive Cruise Control (ACC) cannot replace the driver's assertiveness. The driver is still legally responsible for the vehicle and must monitor the speed and distance in relation to other vehicles. The ACC system should not be used on winding roads or in adverse weather conditions such as heavy rain.

Anti-lock Braking System (ABS)

When braking, wheel speed sensors measure the road wheel speed and should one or more wheels start to lock, the ABS system reduces brake pressure to that wheel. This prevents the wheels from locking during heavy or emergency braking, enabling the vehicle to remain steerable.

Anti-Slip Regulation (ASR)

ASR is a traction control system that prevents the wheels from spinning under acceleration by reducing engine torque.

Auto Hold function

As soon as the vehicle comes to a complete stop, the ABS hydraulic unit stores the vehicle's final braking pressure. So even when you take your foot off the brake pedal, all four wheels' brakes remain applied, providing increased comfort in stationary traffic. This function is released automatically when you drive off again.

Brake Assist

During emergency braking, Brake Assist aids the driver by increasing the brake pressure automatically to a level exceeding the locking limit. The ABS is thus quickly brought into the operating range, which enables maximum vehicle deceleration to be achieved.

Glossary

Direct Shift Gearbox (DSG) □

DSG is a manual gearbox in which the gearshifts are controlled electronically. What makes the DSG unique is that it has two separate gear sets operated by two clutches. The benefit of two gear sets and two clutches is that one gear set and clutch is engaged driving the vehicle with the second disengaged clutch having already pre-selected the next gear awaiting for power to be transferred. As the next gear has already been pre-selected prior to power being applied, the gear change only takes 3-4 100ths of a second. There is virtually no interruption to power, traction or acceleration. The DSG also offers Tiptronic gear selection and sports mode.

Driving Profile Selection

Driving profile selection provides the driver with a wide-ranging choice of settings that can be made to the vehicle according to the driver's preferences. The driver has the option of choosing between the following driving profiles: Normal, Sport (Race – Golf R), Eco, Comfort and Individual. The Normal profile offers a comfortable but dynamic driving style. Sport provides faster response of the accelerator pedal, sportier damping and steering, while the (optional) DSG switches to Sport mode. Additionally, the Golf R features Race mode, damping is increased (which further reduces movements of the body structure), and engine response and shift points of the (optional) DSG are configured to be even more dynamic. Eco mode has been designed to enhance fuel efficiency by including coasting function (with DSG) and by adapting engine performance, earlier gearshift points and consumption-optimised control of the air conditioning system. Comfort mode offers a more relaxed and comfortable driving experience, primarily through the softer suspension setting of the adaptive chassis control. The Individual setting allows the driver to separately set various parameters including steering, engine, Adaptive Cruise Control (ACC) and air conditioning.

Fatigue Detection

The driver Fatigue Detection system automatically analyses the driving characteristics and if they indicate possible fatigue, recommends that the driver takes a break. The system continually evaluates steering wheel movements along with other signals in the vehicle on motorways and others roads at speeds in excess of 65 km/h, and calculates a fatigue estimate. If fatigue is detected, the driver is warned by information in the Multi-function Display and an acoustic signal. The warning is repeated after 15 minutes if the driver has not taken a break.

Fatigue Detection cannot replace the driver's assertiveness. The driver is still legally responsible for the vehicle and therefore determining whether or not they are fit to drive. A driving time of 15 minutes is required in order to assess the driver correctly. The functionality of the system is restricted given a sporty driving style, winding roads and poor road surfaces.

□ Optional equipment.

Electronic Brake-pressure Distribution (EBD)

Electronic, more sophisticated means of regulating the ratio of front/rear brake pressure. Settings are varied according to driving and load conditions to ensure each wheel is braked to the optimum extent.

Electronic Differential Lock (EDL)

EDL improves driving and steering characteristics when accelerating on road surfaces where each wheel has a different degree of traction. The system operates automatically and is combined with the ABS system. Using the ABS wheel sensors, EDL monitors the speed of the individual driving wheels. When a difference in driving wheel speed is detected (i.e. when one wheel starts to spin due to differences in road surfaces, e.g. due to water or dirt) the system brakes the spinning wheel, transferring engine power to the wheel with the best traction.

Electronic Stabilisation Program (ESP)

ABS and ASR traction control systems are integrated into the Electronic Stabilisation Program (ESP). In short, ESP helps ensure that the vehicle goes where you steer it even in extreme driving conditions. The ESP system constantly compares the actual movement of the vehicle with pre-determined values and should a situation arise where the vehicle starts to skid, ESP will apply the brakes to individual wheels and automatically adjust the engine's power output to correct the problem. ESP prevents the vehicle from losing control when trying to avoid an accident, for example. It also reduces the effects of understeer or oversteer.

Extended Electronic Differential Lock (XDL)

XDL is an extension of the Electronic Differential Lock (EDL) function. When cornering, XDL responds to the load relief at the driven wheel/s on the inside of a corner. The ESP hydraulics are used for the XDL to apply pressure to the wheel on the inside of the corner in order to prevent wheel spin. This improves traction and reduces the tendency to understeer. As a direct result of the one-sided and precise braking pressure, cornering is sportier and more accurate.

Front Assist with City Emergency Brake (City EB) function □

The Front Assist ambient traffic monitoring system uses a radar sensor to detect critical distance situations and thus help to shorten the braking distance, reducing the risk of a rear-end collision.

The traffic ahead is monitored constantly by the radar at the front. If a vehicle is detected ahead of you in the lane, the distance and the speed relative to it are calculated. If the gap is closing too fast, Front Assist initially warns the driver by means of an audible as well as a visual signal.

Glossary

At the same time, the brake pads are brought into contact with the brake discs and the sensitivity of the Brake Assist is increased. This primes the braking system for a possible emergency stop. Furthermore, an automatic jolt of the brakes warns the driver of the danger. If the driver also fails to react to the warning jolt, Front Assist brakes automatically, helping to avoid a collision or reduce the severity of the accident.

The City Emergency Brake (City EB) function is a radar based emergency braking system designed to help a driver avoid a low-speed crash or to reduce its severity. At vehicle speeds below 30km/h, City EB monitors the area ahead of the car for vehicles which might present a threat of collision. If a collision is likely, City Emergency Braking first pre-charges the brakes and makes the emergency Brake Assist system more sensitive: if the driver should notice the risk, the car is ready to respond more quickly to their braking action. However, if the driver still takes no action and a collision becomes imminent, City Emergency Braking independently applies the brakes very hard. If the driver intervenes to try to avoid the accident, either by accelerating hard or by steering, City EB will deactivate and allow the driver to complete the avoidance manoeuvre.

Front Assist with City Emergency Brake (City EB) cannot replace the driver's assertiveness. The driver is still legally responsible for the vehicle and must monitor the speed and distance in relation to other vehicles.

Front Differential Lock[^]

The front differential lock is an electronically controlled mechanical differential lock. The drive torque is distributed via an electronically operated clutch in accordance with the driving situation. The differential lock actively counteracts understeer when cornering by increasing the drive force to the wheel on the outside of the bend. This provides more agility and precision on curves, and a more linear driving response. The front differential lock also provides maximum traction for front-wheel drive vehicles.

Both the XDL and front differential lock increase agility, traction and cornering ability. XDL exerts its effect during medium lateral acceleration, whilst the front differential lock enhances this effect right up to the dynamic driving limit range.

Multi-collision brake

The multi-collision brake has been designed to provide effective assistance for the driver in the moments after an accident. Multi-collision brake triggers automatic controlled braking once an initial collision has been detected so as to reduce the intensity of further accidents after a collision and can help prevent follow-on collisions with oncoming traffic.

The triggering of the multi-collision brake is based on a collision being detected by the airbag sensors. The ESP control unit limits the deceleration of the vehicle by the multi-collision brake to a defined value and vehicle speed. The vehicle can still be controlled by the driver, even when automatic braking is taking place. The driver can interrupt the multi-collision braking at any time by accelerating or braking even more strongly.

Park Assist 2



Park Assist 2 actively helps the driver when reversing into 90° parking bays, as well as reversing into and driving out of parallel parking spaces. The system works by using sensors mounted either side of the front and rear bumpers together with parking distance sensors front and rear. To park, the driver simply presses the Park Assist button to select the type of parking manoeuvre and uses the appropriate indicator as the car slowly passes the potential parking space. Sensors scan the size of the parking space as the car is driven past and the driver is alerted if the parking space is big enough. If there is sufficient space, the driver stops the car, selects reverse and lets go of the steering wheel.

Park Assist will alert the driver of the intended path and subsequently the appearance of obstacles in the Multi-Function Display, within the driver's field of vision. Park Assist then actively supports the driver by taking over the steering control and parks the vehicle in the available space using the ideal course, if necessary with several moves. The driver can, however, take over the control of the steering at any time and end the automatic parking procedure.

Park Assist cannot replace the driver's attentiveness. The driver is still legally responsible for the vehicle. If the driver notices a risk that pedestrians, other vehicles or objects could be damaged or if they are uncertain of the risk, they will need to react accordingly and stop the vehicle, ending the function.

Proactive occupant protection system



The proactive occupant protection system incorporates active and passive safety elements. When the system detects a potential accident situation, the occupants and the vehicle are prepared for a possible accident. Automatic tensioning of the seat belts secures the driver and front passenger in their seats to attain the best possible protective potential of the airbag and belt system. In case of high transverse dynamics the side windows (and optional panoramic sunroof) are also closed, leaving just a small air gap. Closing of the windows offers optimal support to the head and side airbags which results in the best possible protection.

Owning a Volkswagen

Volkswagen New Vehicle Warranty

Every new Volkswagen passenger vehicle is covered by a 3-year unlimited kilometres manufacturer's warranty, which includes Volkswagen Assist (24hr roadside assistance). Every new Volkswagen passenger vehicle is also covered by a 3-year paintwork and 12-year anti-corrosion perforation warranty.

Volkswagen Assist – 24 Hour Roadside Assistance

As a valued customer, you can be assured that wherever you travel within Australia, you will have access to roadside assistance, 24 hours a day, 365 days a year. This is complimentary for the duration of the vehicle's original Volkswagen warranty period. You will receive help in the event of a breakdown or accident and if required, your vehicle will be mobilised or transported to an Authorised Volkswagen dealer.

As a Volkswagen owner you will also have access to the additional benefits of accommodation and car rental if your vehicle cannot be mobilised within 24 hours, when you are over 100kms away from home. Volkswagen Roadside Assist can also be renewed at the expiry of the original warranty, ensuring ongoing coverage for your vehicle.

Volkswagen New Vehicle Extended Warranty Insurance*

To give you added peace of mind and the assurance of added security, you have the option to extend the warranty period to suit your ownership cycle. If your Volkswagen is still covered by its New Vehicle Warranty, we can offer you a 12 months or 24 months/unlimited kilometres extension on the original warranty period already existing with your Volkswagen manufacturers Warranty. You then have the assurance that your Volkswagen remains a Volkswagen. For further information regarding warranty and extending your vehicles warranty period, please consult your local Volkswagen dealer, refer to your owner's handbook or visit volkswagen.com.au.

* Volkswagen New Vehicle Extended Warranty Insurance product is provided by Allianz Australia Insurance Limited (Allianz) ABN 15 000 122 850, AFSL Licence No. 234708. In arranging this cover, Volkswagen Group Australia Pty Ltd, ABN 14 093 117 876 and the authorised dealers act as agents of Allianz and not as your agent. Limits apply to the benefits you can claim. For full terms and conditions of cover, please refer to the relevant Volkswagen New Vehicle Extended Warranty Insurance policy document, available to you from your Volkswagen authorised motor dealer.

Volkswagen Genuine Accessories®

Volkswagen Genuine Accessories® are designed for your vehicle and approved by Volkswagen, with particular regard to safety. The workmanship, dimensional accuracy and materials used in these parts comply with factory specifications. To ensure safety and reliability, Volkswagen recommends the use of Volkswagen Genuine Accessories®. Volkswagen Authorised Dealers offer a 3-years/unlimited kilometres warranty on genuine accessories if fitted prior to vehicle purchase, or a 2-years/unlimited kilometres warranty if fitted after purchase.

Volkswagen Finance

Whether you are buying, borrowing or leasing, Volkswagen Finance will certainly make you think differently about financing and insuring your new Volkswagen. Committed to meeting the needs of Volkswagen drivers across Australia, we offer a range of leasing, financing and insurance products, each with distinct advantages depending on your specific circumstances. Our packages are designed to suit your individual requirements and budgeting needs with fast approval times.

Speak to your participating local Volkswagen Dealer today for the best financial solution and ultimate insurance protection for your vehicle or visit volkswagenfinance.com.au.

VOLKSWAGEN FINANCE



Volkswagen Group Australia Pty Ltd
24 Muir Road Chullora NSW 2190
ABN 14 093 117 876

Printed in Australia
April 2014

Publication: **VGAGPERMY145**

Volkswagen is distributed by Volkswagen Group Australia Pty Ltd, 24 Muir Road, Chullora, NSW 2190, ABN 14 093 117 876. Specifications are as planned at March 2014, for Model Year 2014 (except for Golf R manual where specifications are for Model Year 2015) and are subject to change without notice or obligation. All information in this brochure is correct at the time of publication, however variations may occur from time to time and Volkswagen, in so far as it is permitted by law to do so, shall not be liable in any way as a result of any reliance by any person on anything contained in this brochure. Authorised Volkswagen dealers will provide up-to-date information on model application, design feature, prices and availability on request. All colours are a general guide only, as the printing process cannot reproduce the actual exterior colour appearance. See your dealer to confirm colour/model availability.

Volkswagen Insurance & Volkswagen Extended Warranty are provided by Allianz Australia Insurance Limited (Allianz), AFS Licence No. 234708, ABN 15 000 122 580. In arranging this insurance Volkswagen Financial Services Australia Pty Limited, ABN 20 097 071 460 & Volkswagen Group Australia Pty Ltd, ABN 14 093 117 896 and the authorised dealers act as agents of Allianz and not as your agent. Volkswagen Finance is a trading name of Volkswagen Financial Services Australia Pty Limited. Locked Bag 6252, Regents Park NSW 2143. Tel: 02 9695 6311. All colours are a general guide only, as the printing process cannot reproduce the actual exterior colour appearance. See your dealer to confirm colour/model availability.