

**PCA-6004**

Full-sized PCI/ISA-bus  
CPU card with VIA C3  
CPU

## **Copyright notice**

This document is copyrighted, 2000, by Advantech Co., Ltd. All rights are reserved. Advantech Co., Ltd. reserves the right to make improvements to the products described in this manual at any time without notice.

No part of this manual may be reproduced, copied, translated or transmitted in any form or by any means without the prior written permission of Advantech Co., Ltd. Information provided in this manual is intended to be accurate and reliable. However, Advantech Co., Ltd. assumes no responsibility for its use, nor for any infringements upon the rights of third parties which may result from its use.

## **Acknowledgements**

- AWARD is a trademark of AWARD Software, Inc.
- VIA is a registered trademark of VIA Technologies Inc.

All other product names or trademarks are the properties of their respective owners.

# **A Message to the Customer**

---

## **Advantech customer services**

Each and every Advantech product is built to the most exacting specifications to ensure reliable performance in the harsh and demanding conditions typical of industrial environments. Whether your new Advantech equipment is destined for the laboratory or the factory floor, you can be assured that your product will provide the reliability and ease of operation for which the name Advantech has come to be known.

Your satisfaction is our primary concern. Here is a guide to Advantech's customer services. To ensure you get the full benefit of our services, please follow the instructions below carefully.

## **Technical support**

We want you to get the maximum performance from your products. So if you run into technical difficulties, we are here to help. For the most frequently asked questions, you can easily find answers in your product documentation. These answers are normally a lot more detailed than the ones we can give over the phone.

So please consult this manual first. If you still cannot find the answer, gather all the information or questions that apply to your problem, and with the product close at hand, call your dealer. Our dealers are well trained and ready to give you the support you need to get the most from your Advantech products. In fact, most problems reported are minor and are able to be easily solved over the phone.

In addition, free technical support is available from Advantech engineers every business day. We are always ready to give advice on application requirements or specific information on the installation and operation of any of our products.

PCA-6004 Series comparison table			
Model	PCA-6004V-00A1	PCA-6004VE-00A1	PCA-6004H-00A1
<b>CPU: VIA C3 800 MHz</b>	✓	✓	✓
<b>System chipset: VIA Apollo PLE133T</b>	✓	✓	✓
<b>BIOS: Award P&amp;P Flash BIOS</b>	✓	✓	✓
<b>Cache Size: L1 128 KB, L2 64 KB</b>	✓	✓	✓
<b>Max. System RAM:</b> 1 GB (2 X 168-pin sockets)	✓	✓	✓
<b>USB Port</b>	2	2	2
<b>2 EIDE connectors</b>	✓	✓	✓
<b>2 serial, 1 parallel ports</b>	✓	✓	✓
<b>VGA: AGP/VGA</b> <b>(Chipset built-in)</b>	✓	✓	✓
<b>LAN: 10/100Base-T Ethernet</b> (chipset: Realtek 8139C)	X	✓	✓
<b>HiISA (ISA high drive)</b>	X	X	✓
<b>LCD Support</b>	X	X	✓

## **Product warranty**

Advantech warrants to you, the original purchaser, that each of its products will be free from defects in materials and workmanship for two years from the date of purchase.

This warranty does not apply to any products which have been repaired or altered by persons other than repair personnel authorized by Advantech, or which have been subject to misuse, abuse, accident or improper installation. Advantech assumes no liability under the terms of this warranty as a consequence of such events.

If an Advantech product is defective, it will be repaired or replaced at no charge during the warranty period. For out-of-warranty repairs, you will be billed according to the cost of replacement materials, service time and freight. Please consult your dealer for more details.

If you think you have a defective product, follow these steps:

1. Collect all the information about the problem encountered. (For example, type of PC, CPU speed, Advantech products used, other hardware and software used, etc.) Note anything abnormal and list any on-screen messages you get when the problem occurs.
2. Call your dealer and describe the problem. Please have your manual, product, and any helpful information readily available.
3. If your product is diagnosed as defective, obtain an RMA (return material authorization) number from your dealer. This allows us to process your return more quickly.
4. Carefully pack the defective product, a fully-completed Repair and Replacement Order Card and a photocopy proof of purchase date (such as your sales receipt) in a shippable container. A product returned without proof of the purchase date is not eligible for warranty service.
5. Write the RMA number visibly on the outside of the package and ship it prepaid to your dealer.

## Initial Inspection

---

Before you begin installing your card, please make sure that the following materials have been shipped:

- 1 PCA-6004 PCI/ISA single board computer
- 1 PCA-6004 startup Manual
- 1 CD driver utility and manual (in PDF format)
- 1 FDD cable, P/N: 1701340703
- 2 UDMA 66/100 HDD cables, P/N: 1701400452
- 1 printer (parallel port) cable & COM port cable kit, P/N: 1700060305
- 1 ivory cable for PS/2 keyboard and PS/2 mouse, P/N: 1700060202
- 1 USB cable (optional), P/N 1700100170

If any of these items are missing or damaged, contact your distributor or sales representative immediately.

We have carefully inspected the PCA-6004 mechanically and electrically before shipment. It should be free of marks and scratches and in perfect working order upon receipt.

As you unpack the PCA-6004, check it for signs of shipping damage. (For example, damaged box, scratches, dents, etc.) If it is damaged or it fails to meet the specifications, notify our service department or your local sales representative immediately. Also notify the carrier. Retain the shipping carton and packing material for inspection by the carrier. After inspection, we will make arrangements to repair or replace the unit.

# Table

<b>Chapter 1 Hardware Configuration .....</b>	<b>1</b>
<b>1.1 Introduction .....</b>	<b>2</b>
<b>1.2 Features .....</b>	<b>3</b>
<b>1.3 Specifications .....</b>	<b>4</b>
1.3.1 System .....	4
1.3.2 Memory .....	4
1.3.3 Input/Output .....	4
1.3.4 VGA interface .....	5
1.3.5 Ethernet LAN .....	5
1.3.6 AC-97 Audio Interface .....	5
1.3.7 Industrial features .....	5
1.3.8 Mechanical and environmental specifications .....	6
<b>1.4 Jumpers and Connectors .....</b>	<b>6</b>
<b>1.5 Board Layout: Jumper and Connector .....</b>	<b>8</b>
<b>Locations .....</b>	<b>8</b>
<b>1.6 Safety Precautions .....</b>	<b>8</b>
<b>1.7 Jumper Settings .....</b>	<b>9</b>
1.7.1 How to set jumpers .....	9
1.7.2 CMOS clear (J1) .....	10
1.7.3 Watchdog timer output (J2) .....	10
<b>1.8 System Memory .....</b>	<b>11</b>
1.8.1 Sample calculation: DIMM memory capacity .....	11
1.8.2 Supplementary information about DIMMs .....	11
<b>1.9 Memory Installation Procedures .....</b>	<b>12</b>
<b>Chapter 2 Connecting Peripherals .....</b>	<b>13</b>
<b>2.1 Primary (CN1) and Secondary (CN2) IDE Connectors .....</b>	<b>14</b>
<b>2.2 Floppy Drive Connector (CN3) .....</b>	<b>15</b>
<b>2.3 Parallel Port (CN4) .....</b>	<b>15</b>
<b>2.4 USB Port (CN6) .....</b>	<b>16</b>
<b>2.5 VGA Connector (CN7) .....</b>	<b>16</b>

<b>2.6 10/100Base-T Ethernet Connector (CN8)</b> .....	<b>17</b>
<b>2.7 Serial Ports (CN9: COM1; CN10: COM2)</b> .....	<b>17</b>
<b>2.8 PS/2 Keyboard and Mouse Connector (CN11)</b> .....	<b>18</b>
<b>2.9 External Keyboard Connector (CN12)</b> .....	<b>18</b>
<b>2.10 Infrared (IR) Connector (CN13)</b> .....	<b>19</b>
<b>2.11 CPU Fan Connector (CN14)</b> .....	<b>19</b>
<b>2.12 Front Panel Connectors (CN16, CN17, CN18, CN19, CN21 and CN29)</b> .....	<b>20</b>
2.12.1 Keyboard lock and power LED (CN16) .....	20
2.12.2 External speaker (CN17) .....	20
2.12.3 Reset (CN18) .....	21
2.12.4 HDD LED (CN19) .....	21
2.12.5 SM Bus Connector (CN29) .....	21
2.12.6 Connecting to SNMP-1000 remote manager .....	21
<b>2.13 ATX Power Control Connectors (CN20 and CN21)</b> ..	<b>22</b>
2.13.1 ATX feature connector (CN20) and soft power switch connector (CN21) .....	22
2.13.2 Controlling the soft power switch .....	23
<b>2.14 LCD Connector (CN41)</b> .....	<b>23</b>
<b>2.15 LCD Inverter Power Connector (CN42)</b> .....	<b>23</b>
<b>2.16 AC-97 Audio Interface (CN43)</b> .....	<b>23</b>
<b>Chapter 3 Award BIOS Setup</b> .....	<b>25</b>
<b>3.1 Introduction</b> .....	<b>26</b>
<b>3.2 Entering Setup</b> .....	<b>26</b>
<b>3.3 Standard CMOS Setup</b> .....	<b>27</b>
3.3.1 CMOS RAM backup .....	27
<b>3.4 Advanced BIOS Features</b> .....	<b>28</b>
3.4.1 Virus Warning .....	28
3.4.2 CPU Internal Cache / External Cache .....	28
3.4.3 CPU L2 Cache ECC Checking .....	29
3.4.4 First/Second/Third/Other Boot Device .....	29
3.4.5 Swap Floppy Drive .....	29
3.4.6 Boot UP Floppy Seek .....	29
3.4.7 Boot Up NumLock Status .....	29



3.4.8 Gate A20 Option .....	29
3.4.9 Typematic Rate Setting .....	29
3.4.10 Typematic Rate (Chars/Sec) .....	30
3.4.11 Typematic Delay (msec) .....	30
3.4.12 Security Option .....	30
3.4.13 OS Select for DRAM > 64MB .....	30
3.4.14 Video BIOS Shadow .....	31
3.4.15 VIA C3 Clock Ratio .....	32
<b>3.5 Advanced Chipset Features .....</b>	<b>32</b>
3.5.1 DRAM Clock .....	33
3.5.2 SDRAM Cycle Length .....	33
3.5.3 Bank Interleave .....	33
3.5.4 Memory Hole .....	33
3.5.5 P2C/P2P Concurrency .....	33
3.5.6 System BIOS Cacheable .....	33
3.5.7 AGP Aperture Size .....	33
3.5.8 Onchip USB .....	34
3.5.9 USB Keyboard Support .....	34
3.5.10 USB Mouse Support .....	34
3.5.11 CPU to PCI Write Buffer .....	34
3.5.12 PCI Dynamic Bursting .....	34
3.5.13 PCI Master 0 WS Write .....	34
3.5.14 PCI Delay Transaction .....	35
3.5.15 PCI#2 Access #1 Retry .....	35
3.5.16 AGP Master 1 WS Write .....	35
3.5.17 Memory Parity/ ECC Check .....	35
<b>3.6 Integrated Peripherals .....</b>	<b>35</b>
3.6.1 On-Chip Primary/Secondary PCI IDE .....	36
3.6.2 IDE Primary Master/Slave PIO/UDMA Mode, IDE Secondary Master/Slave PIO/UDMA Mode (Auto) .....	36
3.6.3 Init Display First .....	36
3.6.4 IDE HDD Block Mode .....	36
3.6.5 Onboard FDD Controller .....	36
3.6.6 Onboard Serial Port 1 (3F8H/IRQ4) .....	36
3.6.7 Onboard Serial Port 2 (2F8H/IRQ3) .....	36

3.6.8	UART 2 Mode Select .....	37
3.6.9	Onboard Parallel Port (378H/IRQ7) .....	37
3.6.10	Onboard Parallel Port Mode (ECP + EPP) .....	37
3.6.11	ECP Mode Use DMA .....	37
3.6.12	EPP Mode Select .....	37
<b>3.7</b>	<b>Power Management Setup .....</b>	<b>38</b>
3.7.1	ACPI function .....	38
3.7.2	Power Management .....	38
3.7.3	PM Control by APM .....	39
3.7.4	Video Off Option .....	39
3.7.5	Video Off Method .....	39
3.7.6	MODEM Use IRQ .....	40
3.7.7	Soft-Off by PWRBTN .....	40
3.7.8	State After Power Failure .....	40
<b>3.8</b>	<b>Wake Up Event .....</b>	<b>41</b>
3.8.1	VGA .....	41
3.8.2	LPT & COM .....	41
3.8.3	HDD & FDD .....	41
3.8.4	Power On by LAN .....	41
3.8.5	Power On by Modem .....	42
3.8.6	Power On by Alarm .....	42
<b>3.9</b>	<b>PnP/PCI Configurations .....</b>	<b>42</b>
3.9.1	PnP OS Installed .....	42
3.9.2	Reset Configuration Data .....	42
3.9.3	Resources controlled by: .....	43
<b>3.10</b>	<b>PC Health Status .....</b>	<b>43</b>
3.10.1	Current CPU Temperature .....	43
3.10.2	Current CPUFAN Speed .....	43
3.10.3	VCORE .....	43
3.10.4	+2.5/ +3.3V/ + 5V/ +12V .....	43
<b>3.11</b>	<b>Load Setup Defaults .....</b>	<b>44</b>
<b>3.12</b>	<b>Password Setting .....</b>	<b>44</b>
<b>3.13</b>	<b>Save &amp; Exit Setup .....</b>	<b>45</b>
<b>3.14</b>	<b>Exit Without Saving .....</b>	<b>45</b>

<b>Chapter 4 AGP SVGA Setup .....</b>	<b>47</b>
4.1 Before You Begin .....	48
4.2 Features .....	48
4.3 Installation .....	49
<b>Chapter 5 LAN Configuration .....</b>	<b>51</b>
5.1 Introduction .....	52
5.2 Features .....	52
5.3 Driver Installation .....	53
5.4 Windows 9X Drivers Setup Procedure .....	54
5.5 Windows NT Drivers Setup Procedure .....	60
5.6 Windows 2000 Drivers Setup Procedure .....	65
<b>Appendix A Programming the Watchdog Timer .....</b>	<b>73</b>
A.1 Programming the Watchdog Timer .....	74
<b>Appendix B Pin Assignments .....</b>	<b>77</b>
B.1 IDE Hard Drive Connector (CN1, CN2) .....	78
B.2 Floppy Drive Connector (CN3) .....	79
B.3 Parallel Port Connector (CN4) .....	80
B.4 USB Connector (CN6) .....	81
B.5 VGA Connector (CN7) .....	81
B.6 Keyboard and Mouse Connector (CN11) .....	82
B.7 External Keyboard Connector (CN12) .....	82
B.8 IR Connector (CN13) .....	83
B.9 CPU Fan Power Connector (CN14) .....	83
B.10 Power LED and Keylock Connector (CN16) .....	84
B.11 External Speaker Connector (CN17) .....	84
B.12 Reset Connector (CN18) .....	85
B.13 HDD LED Connector (CN19) .....	85
B.14 ATX Feature Connector (CN20) .....	85
B.15 ATX Soft Power Switch (CN21) .....	86
B.16 SM Bus Connector (CN29) .....	86
B.17 18-bit LCD Display Connector (CN41) .....	87
B.18 Flat panel inverter power connector (CN42) .....	88
B.19 AC-97 Audio Interface (CN43) .....	88

<b>B.20 System I/O Ports .....</b>	<b>89</b>
<b>B.21 DMA Channel Assignments .....</b>	<b>90</b>
<b>B.22 Interrupt Assignments .....</b>	<b>90</b>
<b>B.23 1st MB Memory Map .....</b>	<b>91</b>
<b>23: 1st MB memory map .....</b>	<b>91</b>
<b>B.24 PCI Bus Map .....</b>	<b>91</b>

## Figure

<b>Figure 3-1: Award BIOS Setup initial screen .....</b>	<b>26</b>
<b>Figure 3-2: Standard CMOS features screen .....</b>	<b>27</b>
<b>Figure 3-3: Advanced BIOS features screen .....</b>	<b>28</b>
<b>Figure 3-4: Advanced BIOS features screen (2) .....</b>	<b>31</b>
<b>Figure 3-5: Advanced BIOS features screen (3) .....</b>	<b>31</b>
<b>Figure 3-6: Advanced chipset features screen .....</b>	<b>32</b>
<b>Figure 3-7: Integrated peripherals .....</b>	<b>35</b>
<b>Figure 3-8: Power management setup screen .....</b>	<b>38</b>
<b>Figure 3-9: Wake-up event screen .....</b>	<b>41</b>
<b>Figure 3-10: PnP/PCI configurations screen .....</b>	<b>42</b>
<b>Figure 3-11: PC health status screen .....</b>	<b>43</b>

# Table

Table 1-1: Jumpers .....	6
Table 1-2: Connectors .....	7
Table 1-3: CMOS clear (J1) .....	10
Table 1-4: Watchdog timer output (J2) .....	10
Table 1-5: DIMM module allocation table .....	11
Table 1-6: DIMM memory capacity sample calculation .....	11
Table 2-1: Serial port connections (COM1, COM2) .....	17
Table 2-2: PS/2 or ATX power supply LED status .....	20
Table B-1: IDE hard drive connector (CN1, CN2) .....	78
Table B-2: Floppy drive connector (CN3) .....	79
Table B-3: Parallel port connector (CN4) .....	80
Table B-4: USB1/USB2 connector (CN6) .....	81
Table B-5: VGA connector (CN7) .....	81
Table B-6: Keyboard and mouse connector (CN11) .....	82
Table B-7: External keyboard connector (CN12) .....	82
Table B-8: IR connector (CN13) .....	83
Table B-9: CPU fan power connector (CN14) .....	83
Table B-10: Power LED and keylock connector (CN16) .....	84
Table B-11: External speaker (CN17) .....	84
Table B-12: Reset connector (CN18) .....	85
Table B-13: HDD LED connector (CN19) .....	85
Table B-14: ATX feature connector (CN20) .....	85
Table B-15: ATX soft power switch (CN21) .....	86
Table B-16: SM Bus Connector (CN29) .....	86
Table B-17: 18-bit LCD display connector .....	87
Table B-18 .....	88
Table B-19 .....	88
Table B-20: System I/O ports .....	89
Table B-21: DMA channel assignments .....	90
Table B-22: Interrupt assignments .....	90
Table B-23: 1st MB memory map .....	91
Table B-24: PCI bus map .....	91



# CHAPTER 1

## Hardware Configuration

This chapter gives background information on the PCA-6004. It will provide instructions on how card configuration to match your application, and PC installation.

Sections include:

- Introduction
- Features
- Specifications
- Board Layout
- Jumpers and Connectors
- Safety Precautions
- Jumper Settings
- System Memory
- Memory Installation Procedures
- Cache Memory
- CPU Installation

# 1.1 Introduction

---

The PCA-6004 Series all-in-one industrial grade single board computer is designed for embedded applications where low power consumption and fanless operation are major concerns. Providing full industrial features to meet most industrial application requirements, it uses VIA's C3 processor with the Apollo PLE133 chipset.

The VIA C3 CPU is a high performance but low power processor. It has 128KB L1 cache and 64 KB L2 cache. With operating clock speed up to 800 MHz, its computing performance can meet the demand of most applications. If external cooling is available, a cooling fan will not be required on the CPU, thus improving the system reliability. To reduce power consumption and meet special thermal requirements, it can easily be set to a lower clock speed through the BIOS. It has two PCI EIDE interfaces (for up to four devices) and a floppy disk drive interface (for up to two devices). Other features include two RS-232 serial ports (16C550 UARTs with 16-byte FIFO or compatible), one enhanced parallel port (supports EPP/ECP) and two USB (Universal Serial Bus) ports. The PCI enhanced IDE controller supports Ultra DMA/33/66/100 and PIO Mode 4 operation. This provides data transfer rates of 33/66/100 MB/sec. System BIOS supports boot-up from an IDE CD-ROM, SCSI CD-ROM, LS-120, IDE HDD, SCSI HDD, ZIP-100, LAN, and FDD.

A CMOS data backup is stored in the Flash memory, which protects it even after a battery failure. Also included is a 63-level watchdog timer, which resets the CPU or generates an interrupt if a program cannot be executed normally. This enables reliable operation in unattended environments.

The PCA-6004 Series offers several impressive industrial features such as a built-in VGA (AGP) interface chipset, 18-bit flat panel interface, 10/100Base-T networking controller, two DIMM slots for a total of 1 GB RAM memory, AC-97 audio interface (requires an audio extension card: P/N PCA-AUDIO-00A1), and a high driving ISA bus.

The remote management interface enables the PCA-6004 to be managed through Ethernet when connected to the SNMP-1000 Remote HTTP/SNMP System Manager.



*Note: Some of the features mentioned above are not available with all models. For more information about the specifications of a particular model, see Section 1.3: Specifications.*

## 1.2 Features

---

1. **Configurable CPU thermal:** To meet different thermal requirement of specific applications, the PCA-6004 allows users to lower its operating speed by setting the BIOS.
2. **Onboard hardware monitoring:** System healthy status, which includes CPU fan, CPU temperature and system voltages levels, are monitored to ensure stable operation. Proper system configuration and management. A remote monitoring interface is reserved for remote management through Ethernet by using Advantech's SNMP-1000 system management module.
3. **ATX soft power switch:** Through the BIOS, the power button can be defined as a "Standby" (aka "Suspend" or "Sleep") button or as a "Soft-Off" button (see Section 3.6.6 Soft-off by PWR-BTN). Regardless of the setting, holding the power button for more than 4 seconds will activate the Soft-Off mode.
4. **Power-on by modem (requires modem):** This allows a computer to be remotely turned on through an internal or external modem. Users can thus access information on their computers from anywhere in the world.
5. **Power-on by LAN:** This allows you to remotely power up your system through your network by sending a wake-up frame or signal. With this feature, you can remotely upload/ download data to/from systems during off-peak hours.
6. **Message LED:** Chassis LEDs now act as information providers. The way a particular LED illuminates indicates the stage the computer is in. A single glimpse provides useful information to the user.
7. **More:**
  - Additional metal bracket for board stabilization

- **Power On by Alarm:** Powers up your computer at a certain time
- **Virus warning:** During and after system boot-up, any attempt to write to the boot sector or partition table of the hard disk drive will halt the system. In this case, a warning message will be displayed. You can then run your anti-virus program to locate the problem

## 1.3 Specifications

---

### 1.3.1 System

- **CPU:** VIA C3 EBGA CPU BIOS configurable 400-800 MHz, FSB 133 MHz
- **BIOS:** Award Flash BIOS, 2 Mb
- **System Chipset:** VIA Apollo PLE133T (VT8601T + VT82C686B)
- **PCI enhanced IDE hard disk drive interface:** Supports up to four IDE large hard disk drives or other enhanced IDE devices. Supports PIO mode 4 (16.67 MB/s data transfer rate) and Ultra DMA/33/66/100 (33/66/100 MB/s data transfer rate). BIOS enabled/disabled
- **Floppy disk drive interface:** Supports up to two floppy disk drives, 5¼" (360 KB and 1.2 MB) and/or 3½" (720 KB, 1.44 MB, and 2.88 MB). BIOS enabled/disabled

### 1.3.2 Memory

- **RAM:** Up to 1GB in two available 168-pin DIMM sockets. Supports PC100/PC133-compliant SDRAMs
- **ECC (parity DRAM only):** Modules can detect multi-bit memory errors. Correction of 1-bit memory errors

### 1.3.3 Input/Output

- **Bus interface:** PCI/ISA bus, PICMG compliant
- **Enhanced parallel port:** Configurable to LPT1, LPT2, LPT3, or disabled. Standard DB-25 female connector provided. Supports EPP/ECP

- **Serial ports:** Two RS-232 ports with 16C550 UARTs (or compatible) with 16-byte FIFO buffer. Supports speeds up to 115.2 Kbps. Ports can be individually configured to COM1, COM2 or disabled
- **Keyboard and PS/2 mouse connector:** A 6-pin mini-DIN connector is located on the mounting bracket for easy connection to a keyboard or PS/2 mouse. An onboard keyboard pin header connector is also available
- **HISA:** Optional ISA bus high drive

### 1.3.4 VGA interface

- **Controller:** Chipset integrated
- **Display memory:** Share system memory up 8 MB
- **Resolution up to 1600 X 1200 X 16M colors**
- **Optional 18-bit TFT flat panel support. Resolution:** 640 X 480, 800 X 600, 1024 X 768.

### 1.3.5 Ethernet LAN

- **Supports 10/100Base-T Ethernet networking**
- **Chipset:** Realtek 8139C

### 1.3.6 AC-97 Audio Interface

- Connect to audio extension module (P/N: PCA-AUDIO-00A1)
- Provide line in, line out, speaker out, MIC in and AUX in.

### 1.3.7 Industrial features

- **Watchdog timer:** Can generate system reset or IRQ11. The watchdog timer is programmable, with each unit equal to one second (63 levels). The program uses I/O port hex 443h to control the watchdog timer

### 1.3.8 Mechanical and environmental specifications

- **Operating temperature:** 0 ~ 60° C (32 ~ 140° F)
- **Storage temperature:** -20 ~ 70° C (-4 ~ 158° F)
- **Humidity:** 20 ~ 95% non-condensing
- **Power supply voltage:** +5 V, ±12 V
- **Power consumption:**
  - +5 V @ 3.14 A, +12V @ 110 mA (typical, with 128 MB SDRAM)
- **Board size:** 338 x 122 mm (13.3" x 4.8")
- **Board weight:** 0.5 kg (1.2 lb)

## 1.4 Jumpers and Connectors

---

Connectors on the PCA-6004 board link it to external devices such as hard disk drives and a keyboard. In addition, the board has a number of jumpers used to configure your system for your application.

The tables below list the function of each of the board jumpers and connectors. Later sections in this chapter give instructions on setting jumpers. Chapter 2 gives instructions for connecting external devices to your card.

---

Table 1-1: Jumpers

---

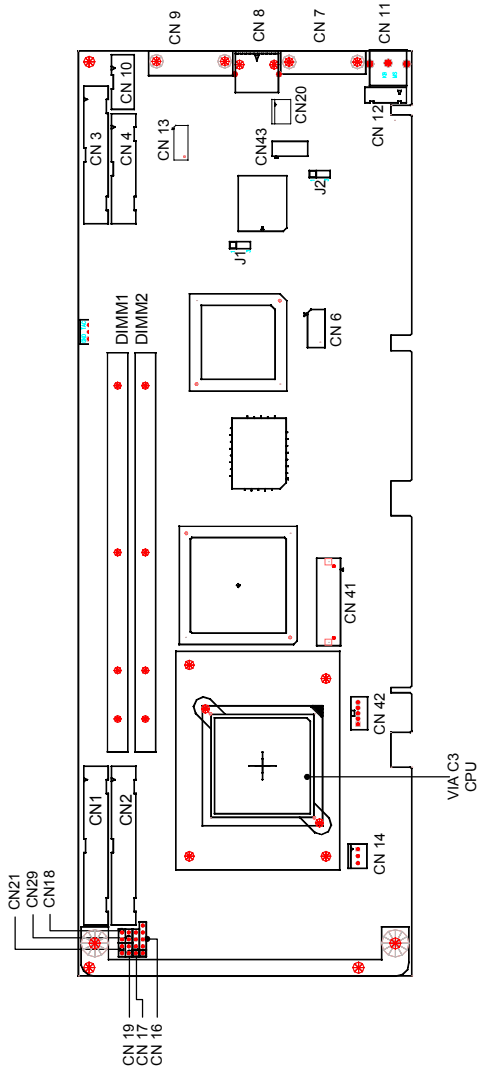
<b>Label</b>	<b>Function</b>
J1	CMOS clear
J2	Watchdog timer output

---

Table 1-2: Connectors

<b>Label</b>	<b>Function</b>
CN1	Primary IDE connector
CN2	Secondary IDE connector
CN3	Floppy drive connector
CN4	Parallel port
CN6	USB port
CN7	VGA connector
CN8	10/100Base-T Ethernet connector
CN9	Serial port: COM1
CN10	Serial port: COM2
CN11	PS/2 keyboard and mouse connector
CN12	External keyboard connector
CN13	Infrared (IR) connector
CN14	CPU fan connector
CN16	Power LED
CN17	External speaker
CN18	Reset connector
CN19	HDD LED connector
CN20	ATX feature connector
CN21	ATX soft power switch
CN29	External SM bus connector
CN41	LCD flat panel connector
CN42	LCD flat panel inverter power connector
CN43	AC-97 Audio Interface

# 1.5 Board Layout: Jumper and Connector Locations



## 1.6 Safety Precautions

---

**Warning!** Always completely disconnect the power cord from your chassis whenever you work with the hardware. Do not make connections while the power is on.



Sensitive electronic components can be damaged by sudden power surges. Only experienced electronics personnel should open the PC chassis.

**Caution!** Always ground yourself to remove any static charge before touching the CPU card. Modern electronic devices are very sensitive to static electric charges.



As a safety precaution, use a grounding wrist strap at all times. Place all electronic components in a static-dissipative surface or static-shielded bag when they are not in the chassis.

## 1.7 Jumper Settings

---

This section provides instructions on how to configure your card by setting jumpers. It also includes the card's default settings and your options for each jumper.

### 1.7.1 How to set jumpers

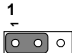
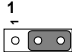
You configure your card to match the needs of your application by setting jumpers. A jumper is a metal bridge that closes an electrical circuit. It consists of two metal pins and a small metal clip (often protected by a plastic cover) that slides over the pins to connect them. To “close” (or turn ON) a jumper, you connect the pins with the clip. To “open” (or turn OFF) a jumper, you remove the clip. Sometimes a jumper consists of a set of three pins, labeled 1, 2, and 3. In this case you connect either pins 1 and 2, or 2 and 3.

A pair of needle-nose pliers may be useful when setting jumpers.

## 1.7.2 CMOS clear (J1)

The PCA-6004 CPU card contains a jumper that can erase CMOS data and reset the system BIOS information. Normally this jumper should be set with pins 1-2 closed. If you want to reset the CMOS data, set J1 to 2-3 closed for just a few seconds, and then move the jumper back to 1-2 closed. This procedure will reset the CMOS to its default setting.



Table 1-3: CMOS clear (J1)

Function	Jumper setting	
* Keep CMOS data	1-2 closed	
Clear CMOS data	2-3 closed	
* default setting		

## 1.7.3 Watchdog timer output (J2)

The PCA-6004 contains a watchdog timer that will reset the CPU or send a signal to IRQ11 in the event the software fails to reset the watchdog timer. The J2 jumper settings control the outcome of what the computer will do in the event the watchdog timer is tripped.

Table 1-4: Watchdog timer output (J2)

Function	Jumper setting	
IRQ11	1-2 closed	
* Reset	2-3 closed	
* default setting		



## 1.8 System Memory

The PCA-6004 has two 168-pin dual inline memory module sockets (DIMMs). All these sockets use 3.3 V unbuffered synchronous DRAMs (SDRAM). DIMMs are available in capacities of 16, 32, 64, 128, 256 or 512 MB. The sockets can be filled in any combination with DIMMs of any size, giving a total memory size between 16 MB and 1 GB. Use the following table to calculate the total DRAM memory within your computer:

Table 1-5: DIMM module allocation table

Socket number	168-pin DIMM memory
1	(16, 32, 64, 128, 256 or 512 MB) x 1
2	(16, 32, 64, 128, 256 or 512 MB) x 1

### 1.8.1 Sample calculation: DIMM memory capacity

Suppose you install a 128 MB DIMM into your PCA-6004's socket 1 and a 32 MB DIMM into sockets. Your total system memory is 160 MB, calculated as follows:

Table 1-6: DIMM memory capacity sample calculation

Socket number	168-pin DIMM memory	DIMM memory	Total memory
1	128 MB	x 1	128 MB
2	32 MB	x 1	32 MB
<b>Total memory</b>			<b>160 MB</b>

### 1.8.2 Supplementary information about DIMMs

Your PCA-6004 can accept SDRAM memory chips with or without parity. Also note::

- If the PCA-6004 operates at 133/100 MHz, only use PC-133/PC-100 compliant DIMMs. Most systems will not even boot if non-compliant modules are used. This is due to strict timing issues involved at this speed.

- SDRAM chips are usually thinner and have higher pin density than EDO chips.
- Chips with 9 chips/side support ECC; chips with 8 chips/side do not support ECC.

## 1.9 Memory Installation Procedures

---

To install DIMMs, first make sure the two handles of the DIMM socket are in the "open" position. i.e. The handles lean outward. Slowly slide the DIMM module along the plastic guides on both ends of the socket. Then press the DIMM module right down into the socket, until you hear a click. This is when the two handles have automatically locked the memory module into the correct position of the DIMM socket. To remove the memory module, just push both handles outward, and the memory module will be ejected by the mechanism in the socket.

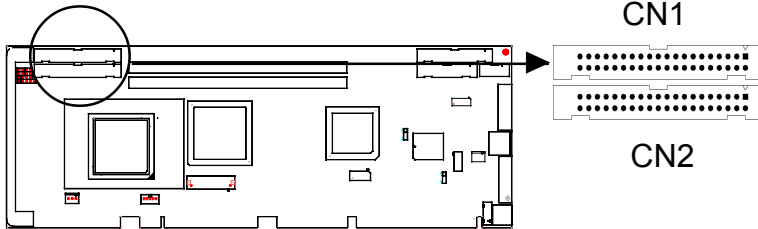
# CHAPTER 2

## Connecting Peripherals

This chapter tells how to connect peripherals, switches and indicators to the PCA-6004 board. You can access most of the connectors from the top of the board while it is installed in the chassis. If you have a number of cards installed, or your chassis is very tight, you may need to partially remove the card to make all the connections.

## 2.1 Primary (CN1) and Secondary (CN2) IDE Connectors

---



You can attach up to four IDE (Integrated Device Electronics) drives to the IDE connectors. The primary (CN1) and secondary (CN2) connectors can each accommodate two drives.

Wire number 1 on the cable is red or blue and the other wires are gray. Connect one end to connector CN1 or CN2 on the CPU card. Make sure that the red/blue wire corresponds to pin 1 on the connector (in the upper right hand corner). See Chapter 1 for help finding the connector.

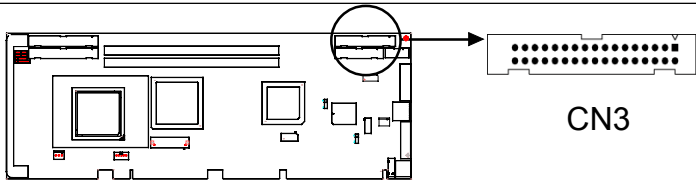
Unlike floppy drives, IDE hard drives can connect in either position on the cable. If you install two drives to a single connector, you will need to set one as the master and one as the slave. You do this by setting the jumpers on the drives. If you use just one drive per connector, you should set each drive as the master. See the documentation that came with your drive for more information.

Connect the first hard drive to the other end of the cable. Wire 1 on the cable should also connect to pin 1 on the hard drive connector, which is labeled on the drive circuit board. Check the documentation that came with the drive for more information.

Connect the second hard drive to the remaining connector (CN2 or CN1), in the same way as described above.

## 2.2 Floppy Drive Connector (CN3)

---

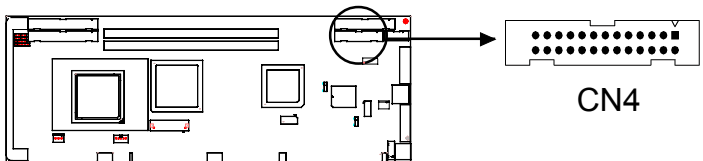


You can attach up to two floppy disk drives to the PCA-6004's onboard controller. You can use any combination of 5.25" (360 KB / 1.2 MB) and/or 3.5" (720 KB / 1.44/2.88 MB) drives.

The card comes with a 34-pin daisy-chain drive connector cable. On one end of the cable is a 34-pin flat-cable connector. On the other end are two sets of floppy disk drive connectors. The set on the end (after the twist in the cable) connects to the A: floppy drive. The set in the middle connects to the B: floppy drive.

## 2.3 Parallel Port (CN4)

---



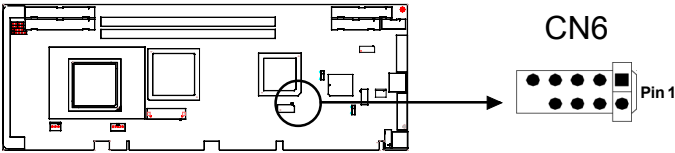
The parallel port is normally used to connect the CPU card to a printer. The onboard parallel port can be accessed through a 26-pin flat-cable connector, CN4. The card comes with an adapter cable which lets you use a traditional DB-25 connector. The cable has a 26-pin connector on one end and a DB-25 connector on the other, mounted on a retaining bracket. The bracket installs at the end of an empty slot in your chassis, giving you access to the connector.

The parallel port is designated as LPT1, and can be disabled or changed to LPT2 or LPT3 in the system BIOS setup.

To install the bracket, find an empty slot in your chassis. Unscrew the plate that covers the end of the slot. Screw in the bracket in place of the plate. Next, attach the flat-cable connector to CN4 on the CPU card. Wire 1 of the cable is red or blue, and the other wires are gray. Make sure that wire 1 corresponds to pin 1 of CN4. Pin 1 is on the upper right side of CN4.

## 2.4 USB Port (CN6)

---



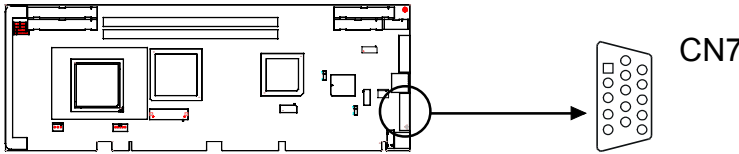
The PCA-6004 provides two USB (Universal Serial Bus) interfaces, which give complete Plug & Play and hot attach/detach for up to 127 external devices. The USB interface complies with USB Specification Rev. 1.0 and is fuse-protected.

The USB interface is accessed through a 10-pin flat-cable connector, CN6. The adapter cable has a 10-pin connector on one end and two USB connectors on the bracket.

The USB interface can be disabled in the system BIOS setup.

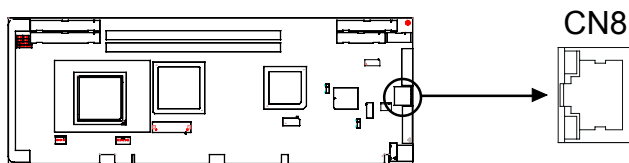
## 2.5 VGA Connector (CN7)

---



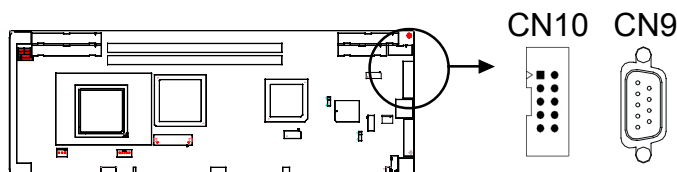
The PCA-6004 includes a AGP SVGA interface that can drive conventional CRT displays. CN7 is a standard 15-pin D-SUB connector commonly used for VGA. Pin assignments for CRT connector CN7 are detailed in Appendix B.

## 2.6 10/100Base-T Ethernet Connector (CN8)



The PCA-6004 is equipped with a high-performance 32-bit PCI-bus Ethernet interface, which is fully compliant with IEEE 802.3/u 10/100 Mbps CSMA/CD standards. It is supported by all major network operating systems and is 100% Novell NE-2000 compatible. An onboard RJ-45 jack provides convenient 10/100Base-T RJ-45 operation.

## 2.7 Serial Ports (CN9: COM1; CN10: COM2)



The PCA-6004 offers two serial ports, CN9 as COM1 and CN10 as COM2. These ports can connect to serial devices, such as a mouse or printers, or to a communication network.

Table 2-1: Serial port connections (COM1, COM2)

Connector	Ports	Address	Interrupt
CN9	COM1	3F8*, 3E8	IRQ4
CN10	COM2	2F8*, 2E8	IRQ3

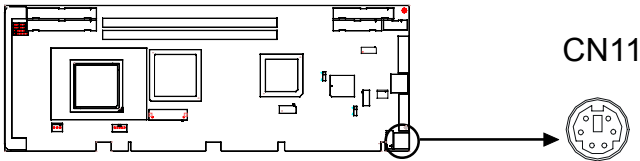
\* default settings

The IRQ and address ranges for both ports are fixed. However, if you want to disable the port or change these parameters later, you can do this in the system BIOS setup.

Different devices implement the RS-232 standard in different ways. If you are having problems with a serial device, be sure to check the pin assignments for the connector.

## 2.8 PS/2 Keyboard and Mouse Connector (CN11)

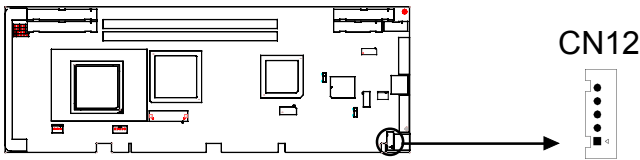
---



The PCA-6004 board provides a keyboard connector. A 6-pin mini-DIN connector (CN11) on the card mounting bracket supports single-board computer applications. The card comes with an adapter to convert from the 6-pin mini-DIN connector to a standard DIN connector and to a PS/2 mouse connector.

## 2.9 External Keyboard Connector (CN12)

---

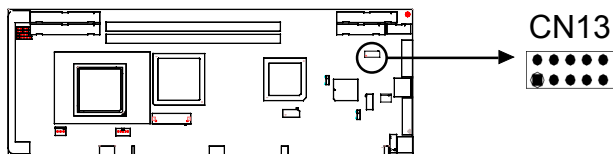


In addition to the PS/2 mouse/keyboard connector on the PCA-6004's rear plate, there is also an extra onboard external keyboard connector. This gives system integrators greater flexibility in designing their systems.



## 2.10 Infrared (IR) Connector (CN13)

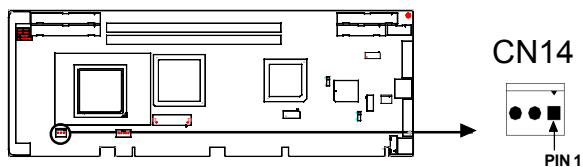
---



This connector supports the optional wireless infrared transmitting and receiving module. This module mounts on the system case. You must configure the setting through the BIOS setup (see Chapter 3).

## 2.11 CPU Fan Connector (CN14)

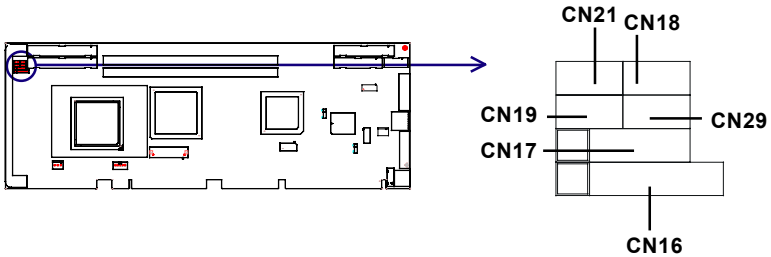
---



This connector supports a cooling fan with tachometer output.

## 2.12 Front Panel Connectors (CN16, CN17, CN18, CN19, CN21 and CN29)

There are several external switches to monitor and control the PCA-6004.



### 2.12.1 Keyboard lock and power LED (CN16)

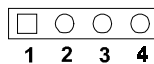
CN16 is a 5-pin connector for the power on LED. Refer to Appendix B for detailed information on the pin assignments. If a PS/2 or ATX power supply is used, the system's power LED status will be as indicated below:

Table 2-2: PS/2 or ATX power supply LED status

Power mode	LED (PS/2 power)	LED (ATX power)
System On	On	On
System Suspend	Fast flashes	Fast flashes
System Off	Off	Slow flashes

### 2.12.2 External speaker (CN17)

CN17 is a 4-pin connector for an external speaker. If there is no external speaker, the PCA-6004 provides an onboard buzzer as an alternative. To enable the buzzer, set pins 3-4 as closed.



### 2.12.3 Reset (CN18)

Many computer cases offer the convenience of a reset button. Connect the wire from the reset button.



### 2.12.4 HDD LED (CN19)

You can connect an LED to connector CN19 to indicate when the HDD is active.



### 2.12.5 SM Bus Connector (CN29)

This connector is reserved for Advantech's SNMP-1000 HTTP/SNMP Remote System Manager. The SNMP-1000 allows users to monitor the internal voltages, temperature and fans from a remote computer through an Ethernet network.

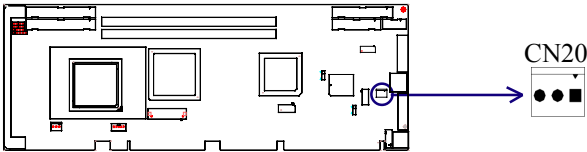
### 2.12.6 Connecting to SNMP-1000 remote manager

Use the 6-pin to 8-pin cable to connect the CPU card to SNMP-1000. This cable comes with the SNMP-1000.



## 2.13 ATX Power Control Connectors (CN20 and CN21)

---



### 2.13.1 ATX feature connector (CN20) and soft power switch connector (CN21)

The PCA-6004 can support an advanced soft power switch function if an ATX power supply is used. To enable the soft power switch function:

1. Take the specially designed ATX-to-PS/2 power cable out of the accessory bag.
2. Connect the 3-pin plug of the cable to CN20 (ATX feature connector).
3. Connect the power on/off button to CN21. (A momentary type of button should be used.)

**Note:** *If you will not be using an ATX power connector, make sure that pins 2-3 of CN20 are closed.*

**Warnings:** *1. Make sure that you unplug your power supply when adding or removing expansion cards or other system components. Failure to do so may cause severe damage to both your CPU card and expansion cards.*



*2. ATX power supplies may power on if certain motherboard components or connections are touched by metallic objects.*

*Important: Make sure that the ATX power supply can take at least a 720 mA load on the 5 V standby lead (5VSB). If not, you may have difficulty powering on your system and/or supporting the "Wake-on-LAN" function.*

### **2.13.2 Controlling the soft power switch**

Users can also identify the current power mode through the system's power LED (see Section 2.13.1).

## **2.14 LCD Connector (CN41)**

---

This 40-pin connector supports an 18-bit TFT LCD.

## **2.15 LCD Inverter Power Connector (CN42)**

---

The LCD inverter is connected to CN42 via a 5-pin connector to provide +12 V power to the LCD display. The pin assignments for CN42 can be found in Appendix B.

## **2.16 AC-97 Audio Interface (CN43)**

---

This interface can be used to connect to the PCA-AUDIO audio extension module for the audio function.



# CHAPTER 3

## Award BIOS Setup

This chapter describes how to set the card's BIOS configuration data.

# 3.1 Introduction

---

Award’s BIOS ROM has a built-in setup program that allows users to modify the basic system configuration. This type of information is stored in battery-backed memory (CMOS RAM) so that it retains the setup information when the power is turned off.

# 3.2 Entering Setup

---

Turn on the computer and check for the “patch code”. If there is a number assigned to the patch code, it means that the BIOS supports your CPU.

If there is no number assigned to the patch code, please contact Advantech’s applications engineer to obtain an up-to-date patch code file. This will ensure that your CPU’s system status is valid.

After ensuring that you have a number assigned to the patch code, press <Del> to allow you to enter the setup.

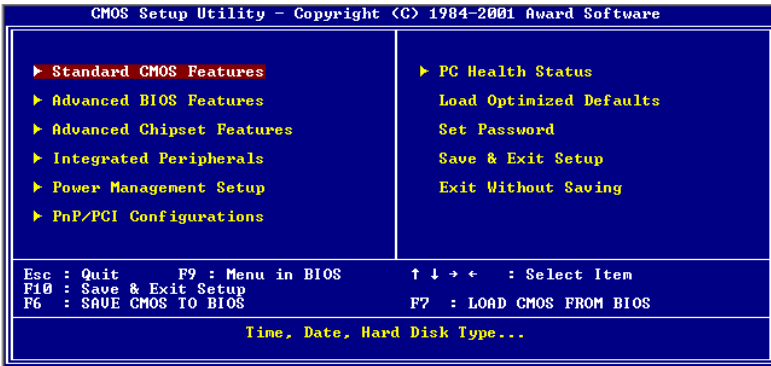


Figure 3-1: Award BIOS Setup initial screen



### 3.3 Standard CMOS Setup

Choose the “Standard CMOS Features” option from the “Initial Setup Screen” menu, and the screen below will be displayed. This menu allows users to configure system components such as date, time, hard disk drive, floppy drive, display, and memory.

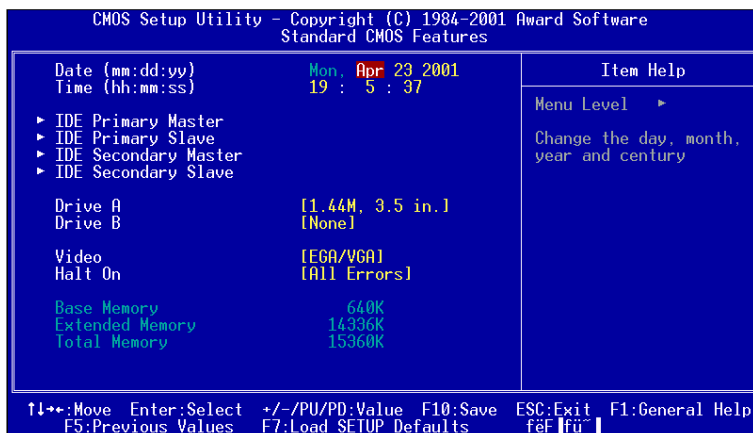


Figure 3-2: Standard CMOS features screen

#### 3.3.1 CMOS RAM backup

The CMOS RAM is powered by an onboard button cell battery.

When BIOS CMOS Setup has been completed, CMOS RAM data is automatically backed up to Flash ROM. If conditions in a harsh industrial environment cause a soft error, BIOS will recheck the data and automatically restore the original data for booting.

*Note: If you intend to update CMOS RAM data, you have to click on “DEL” within two seconds of the “CMOS checksum error...” display screen message appearing. Then enter the “Setup” screen to modify the data. If the “CMOS checksum error...” message appears again and again, please check to see if you need to replace the battery in your system.*

## 3.4 Advanced BIOS Features

The “Advanced BIOS Features” screen appears when choosing the “Advanced BIOS Features” item from the “Initial Setup Screen” menu. It allows the user to configure the CPU card according to his particular requirements.

Below are some major items that are provided in the Advanced BIOS Features screen.

A quick booting function is provided for your convenience. Simply enable the Quick Booting item to save yourself valuable time.

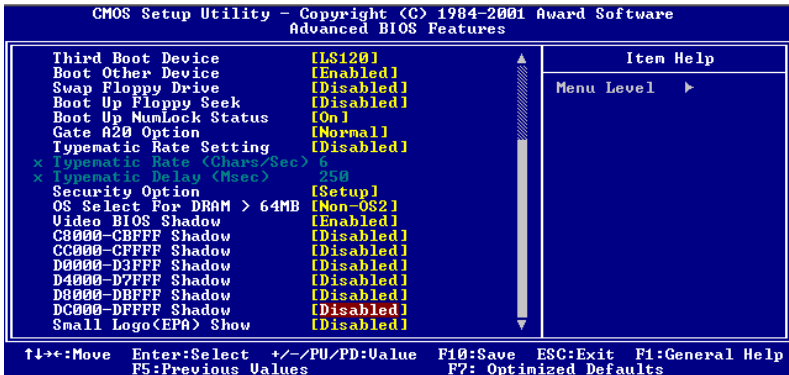


Figure 3-3: Advanced BIOS features screen

### 3.4.1 Virus Warning

If enabled, a warning message and alarm beep activates if someone attempts to write here. The commands are “Enabled” or “Disabled.”

### 3.4.2 CPU Internal Cache / External Cache

Enabling this feature speeds up memory access. The commands are “Enabled” or “Disabled.”

### **3.4.3 CPU L2 Cache ECC Checking**

Enabling allows CPU L2 cache checking. The commands are “Enabled” or “Disabled.”

### **3.4.4 First/Second/Third/Other Boot Device**

The BIOS tries to load the OS with the devices in the sequence selected.

Choices are: Floppy, LS/ZIP, HDD, SCSI, CDROM, LAN, Disabled.

### **3.4.5 Swap Floppy Drive**

Logical name assignments of floppy drives can be swapped if there is more than one floppy drive. The commands are “Enabled” or “Disabled.”

### **3.4.6 Boot UP Floppy Seek**

Selection of the command “Disabled” will speed the boot up. Selection of “Enabled” searches disk drives during boot up.

### **3.4.7 Boot Up NumLock Status**

This feature selects the “power on” state for NumLock. The commands are “Enabled” or “Disabled.”

### **3.4.8 Gate A20 Option**

Normal                      The A20 signal is controlled by the keyboard controller.

Fast (Default)            The A20 signal is controlled by the chipset.

### **3.4.9 Typematic Rate Setting**

The typematic rate is the rate key strokes repeat as determined by the keyboard controller. The commands are “Enabled” or “Disabled.”

Enabling allows the typematic rate and delay to be selected.

### 3.4.10 Typematic Rate (Chars/Sec)

BIOS accepts the following input values (characters/second) for typematic rate: 6, 8, 10, 12, 15, 20, 24, 30.

### 3.4.11 Typematic Delay (msec)

Typematic delay is the time interval between the appearance of two consecutive characters, when holding down a key. The input values for this category are: 250, 500, 750, 1000 (msec).

### 3.4.12 Security Option

This setting determines whether the system will boot up if the password is denied. Access to Setup is, however, always limited.

System     The system will not boot, and access to Setup will be denied if the correct password is not entered at the prompt.

Setup       The system will boot, but access to Setup will be denied if the correct password is not entered at the prompt.

*Note:*       *To disable security, select "PASSWORD SETTING" in the main menu. At this point, you will be asked to enter a password. Simply press <Enter> to disable security. When security is disabled, the system will boot, and you can enter Setup freely.*

### 3.4.13 OS Select for DRAM > 64MB

This setting allows selecting an OS with greater than 64MB of RAM. Commands are "Non-OS2" or "OS2."

### 3.4.14 Video BIOS Shadow

Enable copies video BIOS to shadow RAM for performance improving. Choices are Enable, Disable.

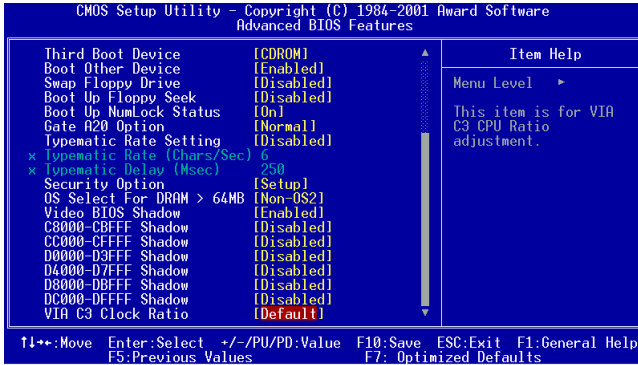


Figure 3-3-1: Advanced BIOS features screen (2)

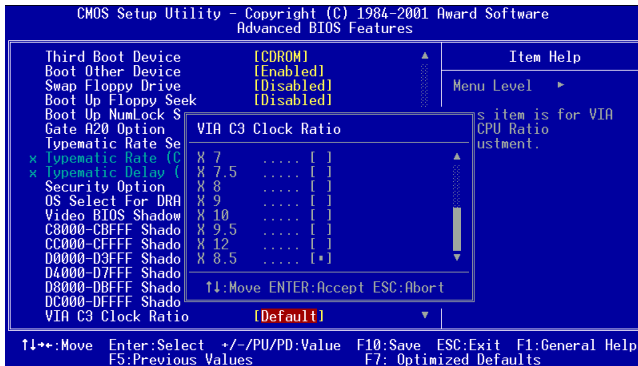


Figure 3-3-2: Advanced BIOS features screen (3)

### 3.4.15 VIA C3 Clock Ratio

This setting allows changing the CPU clock speed in case of special thermal concerns. The choices are:

Default	Auto detect CPU speed
X3	400MHz
X3.5	467MHz
X4	533MHz
X4.5	600MHz
X5	667MHz
X5.5	733MHz
X6	800MHz

X6.5~12 These ratios are reserved for future CPU use. Do not use them otherwise the system will be unstable or even not boot up.

## 3.5 Advanced Chipset Features

By choosing the “Advanced Chipset Features” option from the “Initial Setup Screen” menu, the screen below will be displayed. This sample screen contains the manufacturer’s default values for this CPU card, as shown in Figure 3-5:

*Note: DRAM default timings have been carefully chosen and should ONLY be changed if data is being lost. Please first contact technical support.*

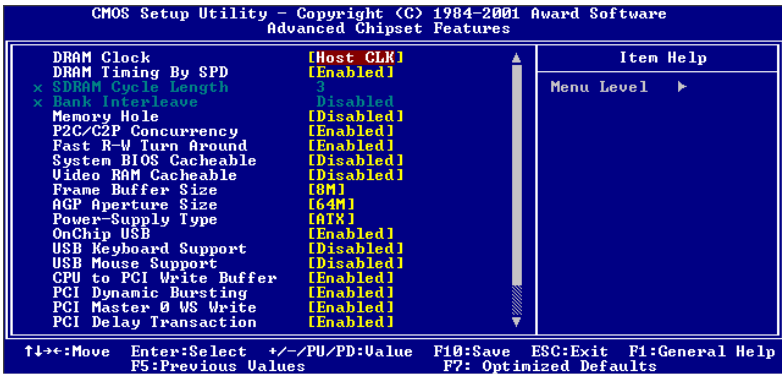


Figure 3-4: Advanced chipset features screen

### **3.5.1 DRAM Clock**

This item allows you to control the DRAM speed. The Choice: Host Clock, CLK-33M.

### **3.5.2 SDRAM Cycle Length**

When synchronous DRAM is installed, the number of clock cycles of CAS latency depends on the DRAM timing. Do not reset this field from the default value specified by the system designer. The Choice: 2, 3.

### **3.5.3 Bank Interleave**

This item allows you to select the value in this field, depending on whether the board has paged DRAMs or EDO (extended data output) DRAMs. The Choice: EDO 50ns, EDO 60ns, Slow, Medium, Fast, Turbo.

### **3.5.4 Memory Hole**

In order to improve performance, certain space in memory is reserved for ISA cards. This memory must be mapped into the memory space below 16MB. The Choice: 15M-16M, Disabled.

### **3.5.5 P2C/P2P Concurrency**

This item allows you to enable/disable the PCI to CPU, CPU to PCI concurrency. The Choice: Enabled, Disabled

### **3.5.6 System BIOS Cacheable**

Selecting *Enabled* allows caching of the system BIOS ROM at F0000h-FFFFFh, resulting in better system performance. However, if any program writes to this memory area, a system error may result. The choice: Enabled, Disabled.

### **3.5.7 AGP Aperture Size**

Select the size of Accelerated Graphics Port (AGP) aperture. The

aperture is a portion of the PCI memory address range dedicated for graphics memory address space. Host cycles that hit the aperture range are forwarded to the AGP without any translation. The Choice: 4M, 8M, 16M, 32M, 65M, 128M, 256M.

### **3.5.8 Onchip USB**

This should be enabled if your system has a USB installed on the system board and you want to use it. Even when so equipped, if you add a higher performance controller, you will need to disable this feature. The choice: Enabled, Disabled.

### **3.5.9 USB Keyboard Support**

Select *Enabled* if your system contains a Universal Serial Bus (USB) controller and you have a USB keyboard. The choice: Enabled, Disabled.

### **3.5.10 USB Mouse Support**

Select *Enabled* if your system contains a Universal Serial Bus (USB) controller and you have a USB mouse. The choice: Enabled, Disabled.

### **3.5.11 CPU to PCI Write Buffer**

When this field is *Enabled*, writes from the CPU to the PCI bus are buffered, to compensate for the speed differences between the CPU and the PCI bus. When *Disabled*, the writes are not buffered and the CPU must wait until the write is complete before starting another write cycle. The choice: Enabled, Disabled.

### **3.5.12 PCI Dynamic Bursting**

When *Enabled*, every write transaction goes to the write buffer. Burstable transactions then burst on the PCI bus and nonburstable transactions don't. The choice: Enabled, Disabled

### **3.5.13 PCI Master 0 WS Write**

When *Enabled*, writes to the PCI bus are executed with zero wait states. The choice: Enabled, Disabled



### 3.5.14 PCI Delay Transaction

The chipset has an embedded 32-bit posted write buffer to support delay transactions cycles. Select *Enabled* to support compliance with PCI specification version 2.1. The choice: Enabled, Disabled

### 3.5.15 PCI#2 Access #1 Retry

When disabled, PCI#2 will not be disconnected until access finishes (default). When enabled, PCI#2 will be disconnected if max retries are attempted without success. The choice: Enabled, Disabled

### 3.5.16 AGP Master 1 WS Write

When *Enabled*, writes to the AGP(Accelerated Graphics Port) are executed with one wait states. The choice: Enabled, Disabled

### 3.5.17 Memory Parity/ ECC Check

Enabled add a parity check to the boot-up memory test. Select Enabled when only system DRAM contains parity. The Choice: Enable, Disable.

## 3.6 Integrated Peripherals

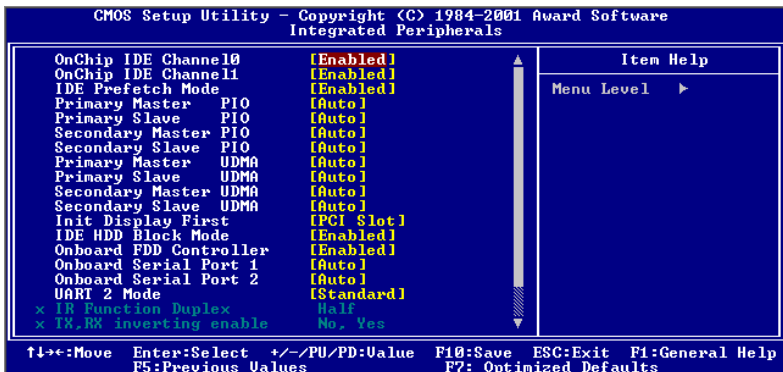


Figure 3-5: Integrated peripherals

### **3.6.1 On-Chip Primary/Secondary PCI IDE**

If you enable IDE HDD Block Mode, the enhanced IDE driver will be enabled. Leave IDE HDD Block Mode on the default setting.

### **3.6.2 IDE Primary Master/Slave PIO/UDMA Mode, IDE Secondary Master/Slave PIO/UDMA Mode (Auto)**

Each channel (Primary and Secondary) has both a master and a slave, making four IDE devices possible. Because each IDE device may have a different Mode timing (0, 1, 2, 3, 4), it is necessary for these to be independent. The default setting “Auto” will allow autodetection to ensure optimal performance.

### **3.6.3 Init Display First**

This item allows you to choose which one to activate first, PCI Slot or AGP. The choices: PCI Slot, AGP.

### **3.6.4 IDE HDD Block Mode**

Block mode is also called block transfer, multiple commands, or multiple sector read/write. If your IDE hard drive supports block mode (most new drives do), select Enabled for automatic detection of the optimal number of block read/writes per sector the drive can support.

The choice: Enabled, Disabled

### **3.6.5 Onboard FDD Controller**

When enabled, this field allows you to connect your floppy disk drives to the onboard floppy disk drive connector instead of a separate controller card. If you want to use a different controller card to connect the floppy disk drives, set this field to Disabled.

### **3.6.6 Onboard Serial Port 1 (3F8H/IRQ4)**

The settings are Auto 3F8/IRQ4, 2F8/IRQ3, 3E8/IRQ4, 2E8/IRQ3, and Disabled for the on-board serial connector.

### **3.6.7 Onboard Serial Port 2 (2F8H/IRQ3)**

The settings are Auto 3F8/IRQ4, 2F8/IRQ3, 3E8/IRQ4, 2E8/IRQ3, and Disabled for the on-board serial connector.

### **3.6.8 UART 2 Mode Select**

This item allows you to select UART mode. The choices: HPSIR, ASKIR, Standard.

### **3.6.9 Onboard Parallel Port (378H/IRQ7)**

This field sets the address of the on-board parallel port connector. You can select either 3BC/IRQ7, 378/IRQ7, 278/IRQ5 or Disabled. If you install an I/O card with a parallel port, make sure there is no conflict in the address assignments. The CPU card can support up to three parallel ports, as long as there are no conflicts for each port.

### **3.6.10 Onboard Parallel Port Mode (ECP + EPP)**

This field allows you to set the operation mode of the parallel port. The setting “Normal” allows normal speed operation, but in one direction only. “EPP” allows bidirectional parallel port operation at maximum speed. “ECP” allows the parallel port to operate in bidirectional mode and at a speed faster than the maximum data transfer rate. “ECP + EPP” allows normal speed operation in a two-way mode.

### **3.6.11 ECP Mode Use DMA**

This selection is available only if you select “ECP” or “ECP + EPP” in the Parallel Port Mode field. In ECP Mode Use DMA, you can select DMA channel 1, DMA channel 3, or Disable. Leave this field on the default setting.

### **3.6.12 EPP Mode Select**

This field allows you to select EPP port type 1.7 or 1.9. The choices: EPP1.7, 1.9.

## 3.7 Power Management Setup

The power management setup controls the CPU card's "green" features to save power. The following screen shows the manufacturer's defaults:

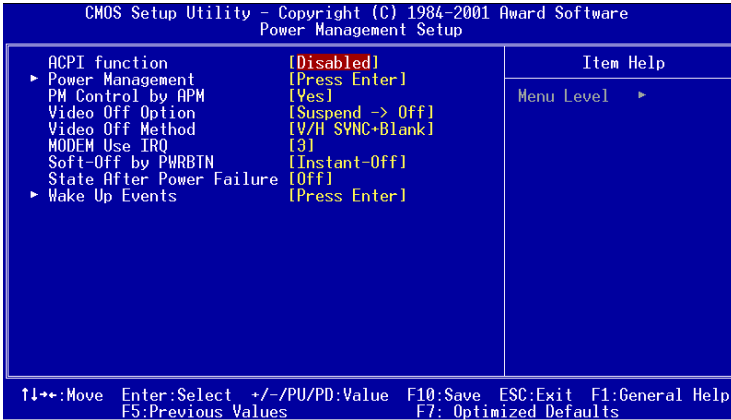


Figure 3-6: Power management setup screen

### 3.7.1 ACPI function

This item allows you to enable/disable the Advanced Configuration and Power Management (ACPI). The choice: Enabled, Disabled.

### 3.7.2 Power Management

This category allows you to select the type (or degree) of power saving and is directly related to the following modes:

1. HDD Power Down
2. Doze Mode
3. Suspend Mode

There are four selections for Power Management, three of which have fixed mode settings.

Disable (default)	No power management. Disables all four modes
/Min. Power Saving	Minimum power management. Doze Mode = 1 hr. Standby Mode = 1 hr., Suspend Mode = 1 hr., and HDD Power Down = 15 min.
Max. Power Saving	Maximum power management. Doze Mode = 1 min., Standby Mode = 1 min., Suspend Mode = 1 min., and HDD Power Down = 1 min.
User Defined	Allows you to set each mode individually. When not disabled, each of the ranges are from 1 min. to 1 hr. except for HDD Power Down which ranges from 1 min. to 15 min. and disable.

### 3.7.3 PM Control by APM

When enabled, an Advanced Power Management device will be activated to enhance the Max. Power Saving mode and stop the CPU internal clock. If Advance Power Management (APM) is installed on your system, selecting Yes gives better power savings. If the Max. Power Saving is not enabled, this will be preset to *No*.

### 3.7.4 Video Off Option

When enabled, this feature allows the VGA adapter to operate in a power saving mode.

Always On	Monitor will remain on during power saving modes
Suspend N---> Off	Monitor blanked when the systems enters the Suspend mode.
Susp,Stby N---> Off	Monitor blanked when the system enters either Suspend or Standby modes.
All Modes N> Off	Monitor blanked when the system enters any power saving mode.

### 3.7.5 Video Off Method

This determines the manner in which the monitor is blanked.

V/H SYNC+Blank	This selection will cause the system to turn off the vertical and horizontal synchronization ports and write blanks to the video buffer.
Blank Screen	This option only writes blanks to the video buffer.
DPMS	Select this option if your monitor supports the Display Power Management Signaling (DPMS) standard of the Video Electronics Standards to select video power management values.

### **3.7.6 MODEM Use IRQ**

This determines the IRQ in which the MODEM can use. The choices: 3, 4, 5, 7, 9, 10, 11, NA.

### **3.7.7 Soft-Off by PWRBTN**

If you choose “Instant-Off”, then pushing the ATX soft power switch button once will switch the system to “system off” power mode. You can choose “Delay 4 sec.” If you do so, then pushing the button for more than 4 seconds will turn off the system, whereas pushing the button momentarily (for less than 4 seconds) will switch the system to “suspend” mode.

### **3.7.8 State After Power Failure**

This field lets you to determine the state that your computer returns after a power failure. If sets to Off, the PC will not boot after a power failure. If sets to On, the PC will restart after a power failure. If sets to Auto, the PC will go back to the previous state before a power failure occurred. For instance, if the PC is power-on when power system fails, the PC will restart when power system is working again. If the PC is power-ff when power system fails, the PC will not boot when power system is working again. The Choice: Off, On, Auto.

## 3.8 Wake Up Event

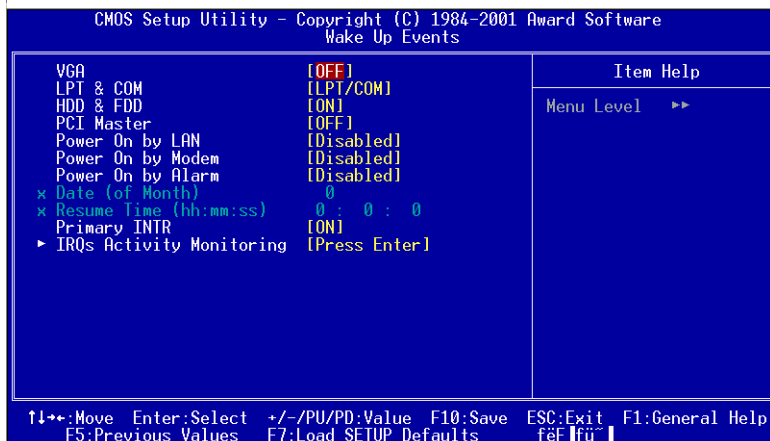


Figure 3-7: Wake-up event screen

### 3.8.1 VGA

When *Enabled*, you can set the VGA awakens the system.

### 3.8.2 LPT & COM

When *On of* LPT & COM, any activity from one of the listed system peripheral devices or IRQs wakes up the system.

### 3.8.3 HDD & FDD

When *On of* HDD & FDD, any activity from one of the listed system peripheral devices wakes up the system.

### 3.8.4 Power On by LAN

This shows you to wake up the system via LAN from the remote host. The Choice: Enable, Disable.

### 3.8.5 Power On by Modem

When enabled, an input signal on the serial Ring Indicator (RI) line (in other words, an incoming call on the modem) awakens the system from a soft off state. The Choice: Enable, Disable.

### 3.8.6 Power On by Alarm

When enabled, you can set the date and time at which the RTC (real-time clock) alarm awakens the system from Suspend mode. The Choice: Enable, Disable.

## 3.9 PnP/PCI Configurations

---

### 3.9.1 PnP OS Installed

This feature allows you to install the PnP OS. The commands are “yes” or “no.”

### 3.9.2 Reset Configuration Data

*Note: This is left “Disabled.” Select “Enabled” to reset Extended System Configuration Data (ECSD) if you have installed a new add-on and your OS won’t boot and you need to reconfigure.*

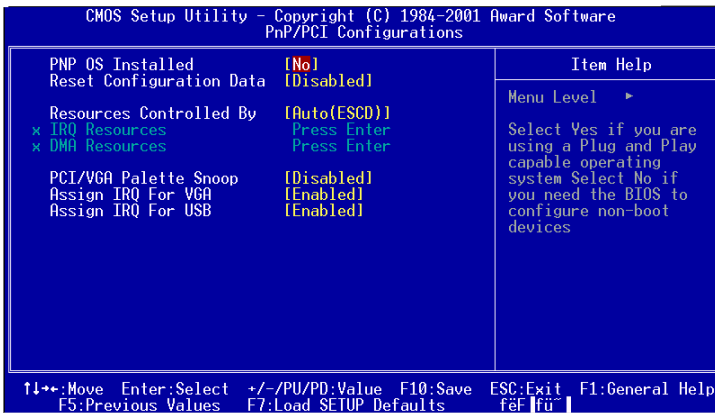


Figure 3-8: PnP/PCI configurations screen



### 3.9.3 Resources controlled by:

The commands here are “Auto” or “manual.” Choosing “manual” requires you to choose resources from each following sub-menu. “Auto” automatically configures all of the boot and Plug and Play devices but you must be using Windows 95 or above.

## 3.10 PC Health Status

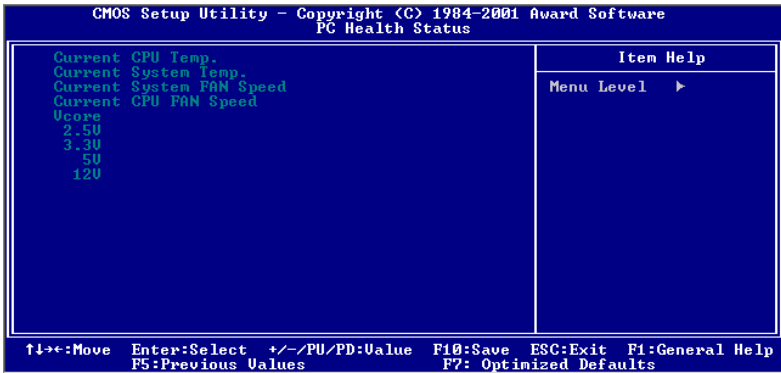


Figure 3-9: PC health status screen

### 3.10.1 Current CPU Temperature

This shows you the current CPU1 temperature.

### 3.10.2 Current CPUFAN Speed

This shows you the current CPUFAN speed.

### 3.10.3 VCORE

This shows CPU1 core voltage.

### 3.10.4 +2.5/ +3.3V/ + 5V/ +12V

This shows you the voltage of +2.5/+3.3V/+ 5V/+12V

## 3.11 Load Setup Defaults

---

“LOAD SETUP DEFAULTS” loads the values required by the system for maximum performance.


## 3.12 Password Setting

---

To change the password:

1. Choose the “Set Password” option from the “Initial Setup Screen” menu and press <Enter>.

The screen will display the following message:



```
Enter Password:
```

Press <Enter>.

2. If the CMOS is good or if this option has been used to change the default password, the user is asked for the password stored in the CMOS. The screen will display the following message:



```
Confirm Password:
```

Enter the current password and press <Enter>.

3. After pressing <Enter> (ROM password) or the current password (user-defined), you can change the password stored in the CMOS. The password must be no longer than eight (8) characters.

Remember, to enable the password setting feature, you must first select either “Setup” or “System” from the “Advanced BIOS Features” menu.

### **3.13 Save & Exit Setup**

---

If you select this and press <Enter>, the values entered in the setup utilities will be recorded in the CMOS memory of the chipset. The microprocessor will check this every time you turn your system on and compare this to what it finds as it checks the system. This record is required for the system to operate.

### **3.14 Exit Without Saving**

---

Selecting this option and pressing <Enter> lets you exit the setup program without recording any new values or changing old ones.



# CHAPTER 4

## AGP SVGA Setup

The PCA-6004 features an integrated AGP/VGA interface. This chapter provides instructions for installing and operating the software drivers on the display driver CD included in your package.

## 4.1 Before You Begin

---

To facilitate the installation of the enhanced display device drivers and utility software, you should read the instructions in this chapter carefully before you attempt installation. The enhanced display drivers for the PCA-6004 board are located on the software installation CD. You must install the drivers and utility software by using the supplied SETUP program for DOS drivers.

*Note: The files on the software installation CD are compressed. Do not attempt to install the drivers by copying the files manually. You must use the supplied SETUP program to install the drivers.*

Before you begin, it is important to note that most display drivers need to have the relevant software application already installed in the system prior to installing the enhanced display drivers. In addition, many of the installation procedures assume that you are familiar with both the relevant software applications and operating system commands. Review the relevant operating system commands and the pertinent sections of your application software's user's manual before performing the installation.

## 4.2 Features

---

- Chipset integrated high performance 3D graphic engine
- High speed internal AGP bus mastering data bus
- PC 99 compliant
- Support DVD playback & hardware motion compensation
- Integrated 230 MHz DAC allows 64K colors at 1280 x 1024 resolution
- User-friendly installation for Windows 95 and Windows NT
- AGP 1.0 interface
- Share system SDRAM up to 8 MB.

## 4.3 Installation

---

First, insert CD drive. Then follow the Icons for your PCA Series model number.

Click on the right driver for the auto-installation.

Please follow the instruction of the installation program to install the VGA driver and to restart the system when the installation is finished.





# CHAPTER 5

## LAN Configuration

The PCA-6004 features an onboard LAN interface. This chapter gives detailed information on Ethernet configuration. It shows you how to configure the card to match your application requirements.

## 5.1 Introduction

---

The PCA-6004 features an optional 32-bit 10/100 Mbps Ethernet network interface. This interface supports bus mastering architecture and auto-negotiation features. Therefore standard twisted-pair cabling with RJ-45 connectors for both 10 Mbps and 100 Mbps connections can be used. Extensive driver support for commonly-used network systems is also provided.

## 5.2 Features

---

- Realtek RTL8139C Ethernet LAN controller (fully integrated 10Base-T/100Base-TX)
- Supports Wake-on-LAN remote control function
- Supports up to 128 K bytes Boot ROM
- PCI Bus Master complies with PCI Rev. 2.2
- MAC & PHY (10/100 Mbps) interfaces
- Complies to IEEE 802.3X 10Base-T and IEEE 802.3u 100Base-T interfaces
- 3.3 V power supply with 5 V tolerant I/Os
- Single RJ-45 connector gives auto-detection of 10 Mbps or 100 Mbps network data transfer rates and connected cable types
- Enhancements on ACPI, PCI power management
- Compliant to PC99 standard

## 5.3 Driver Installation

---

The PCA-6004's onboard Ethernet interface supports all major network operating systems.

The BIOS automatically detects the LAN while booting, and assigns an IRQ level and I/O address. No jumpers or switches are required for user configuration.

The drivers and installation instructions are located in the following directories of the utility CD:

- Dos: Drivers for DOS platforms
- Info: Installation instructions
- Nwserver: Drivers for Novell NetWare
- Wfw: Drivers for Windows 3.11 for Workgroups

Please refer to the text files in the Info directory for detailed information about installing the drivers.

*Note: Operating system vendors may post driver updates on their websites. Please visit the websites of OS vendors to download updated drivers.*

# 5.4 Windows 9X Drivers Setup Procedure

---

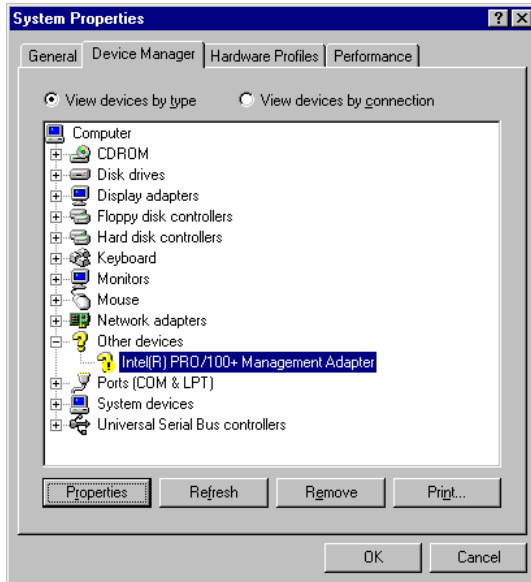
*Note 1: If you are using Windows 98SE, your system will find the LAN device "PCI Ethernet Controller". You must first remove this device from your system, and then restart your computer. Then you will be ready to install the correct driver by following the procedure below.*

*Note 2: The CD-ROM drive is designated as "D" throughout this section.*

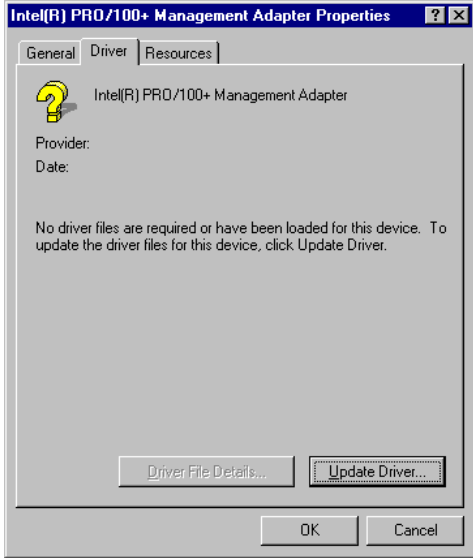
1. In the "Windows" screen, click on "Start" and select "Settings". Then click on the "Control Panel" icon to select "System".



2. In the "System Properties" window, select the "Device Manager" tab. Select "View devices by type", and navigate to: Computer\Other devices\PCI Ethernet Controller. Highlight "PCI Ethernet Controller" and click on "Properties".



3. In the "PCI Ethernet Controller Properties" window, select the "Driver" tab. Then click on "Update Driver..."



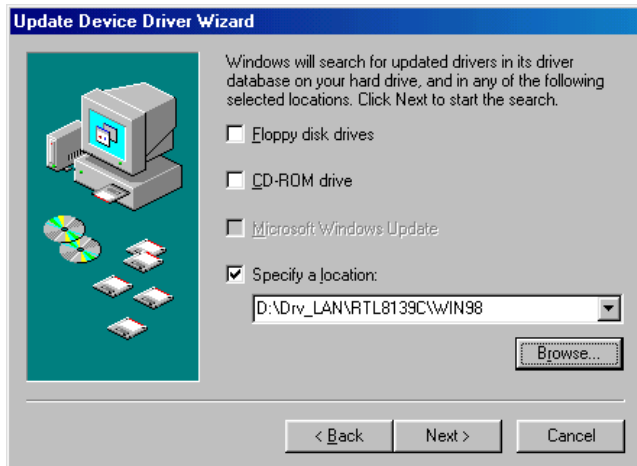
4. In the "Update Device Driver Wizard" window, click on "Next".



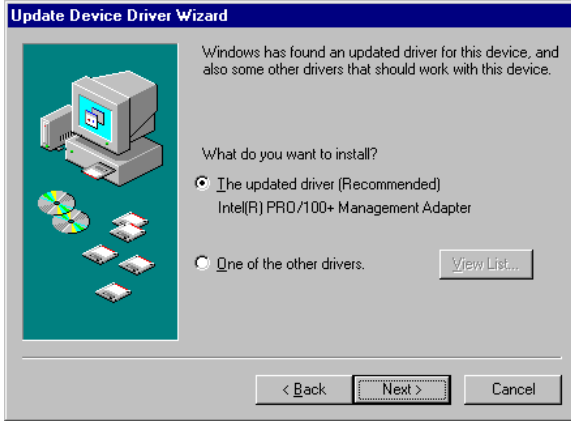
5. Click "Next".



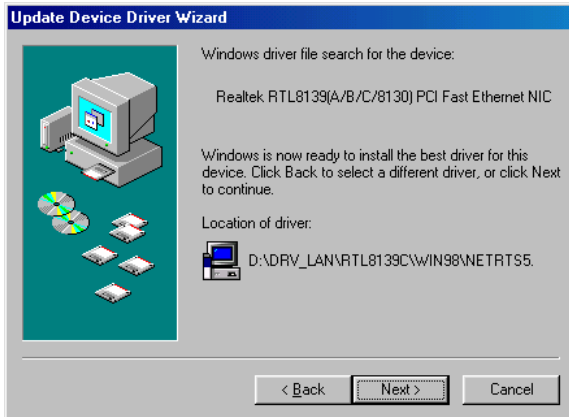
6. In the following "Update Device Driver Wizard" window, select "Specify a location:". Type in: "D:\Drv\_LAN\RTL8139C\WIN98". Then click on "Next".



7. In the following "Update Device Driver Wizard" window, select "The updated driver ...". Then click on "Next".



8. In the following "Update Device Driver Wizard" window, click on "Next".





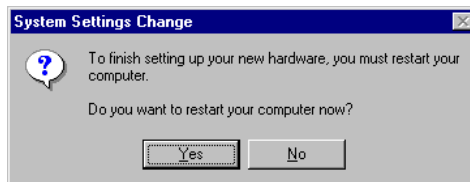
- When the "Insert Disk" window appears, insert the utility CD into the CD-ROM drive. Then click on "OK".



- When the "Update Device Driver Wizard" window shows, click on finish.



- In the "System Settings change" window, select click on "Yes".



# 5.5 Windows NT Drivers Setup Procedure

*Note: The CD-ROM drive is designated as "E" throughout this section.*

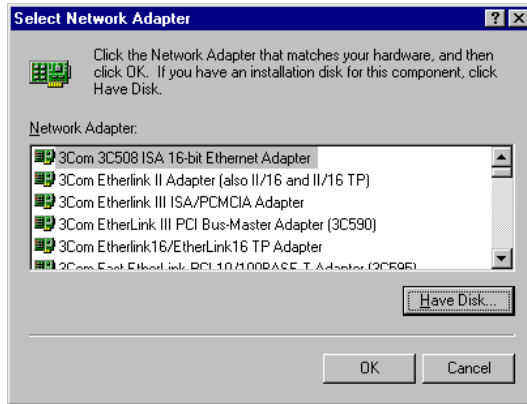
1. In the "Windows NT" screen, click on "Start" and select "Settings". Then click on the "Control Panel" icon to select "Network".



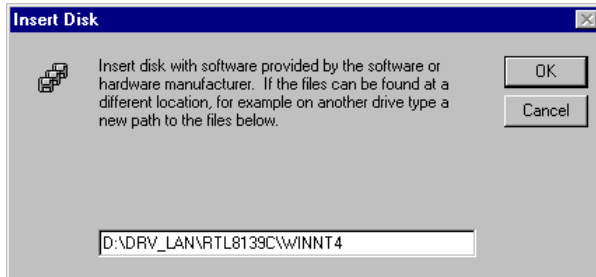
2. In the "Network" window, select the "Adapters" tab. Then click on "Add...".



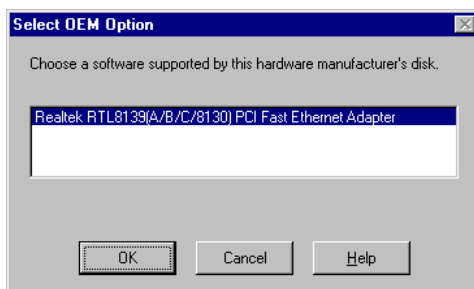
3. In the "Select Network Adapter" window, click on "Have Disk...".



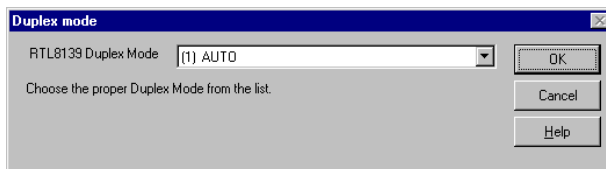
4. When the "Insert Disk" window appears, insert the utility CD into the CD-ROM drive. The correct file path is;  
D:\Drv\_LAN\RTL8139C\WINNT4. When you have the correct file path, click on "OK".



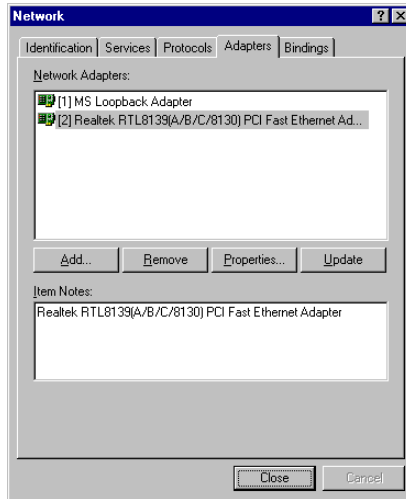
5. In the "Select OEM Option" window, click on "OK".



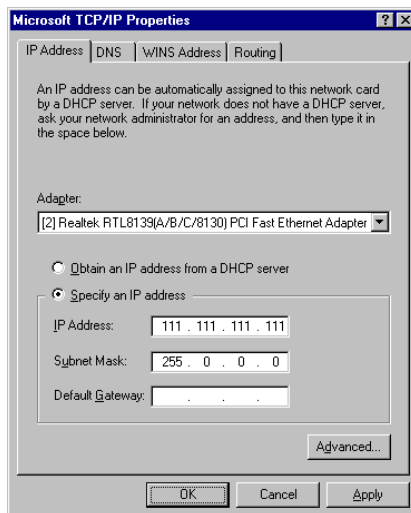
6. In the "Duplex mode", click "OK".



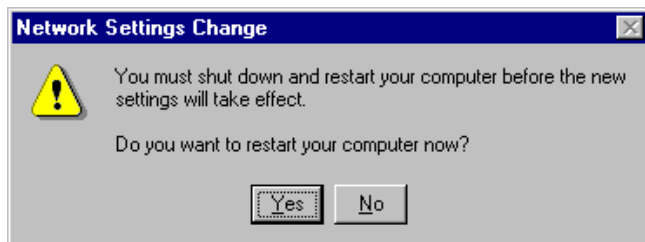
- In the "Network" window, select the "Adapters" tab. Under "Network Adapters:", highlight "Realtek RTL8139CA/B/C(8130)".



- In the "Microsoft TCP/IP Properties" window, select the "IP Address" tab. Then select "Specify an IP address". Type in the IP Address and Subnet Mask details. Then click on "OK".



9. In the "Network Settings Change" window, click on "Yes".



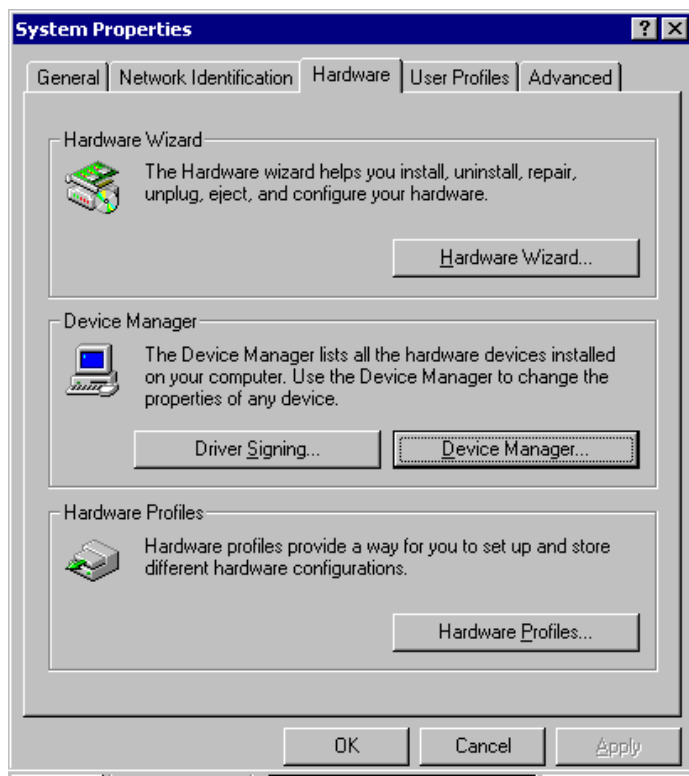
## 5.6 Windows 2000 Drivers Setup Procedure

**Note:** *The CD-ROM drive is designed as "E" throughout this section.*

1. In the "Windows 2000" screen, click on " Start" and select " settings". Then click on the " Control Panel" icon to select "system".

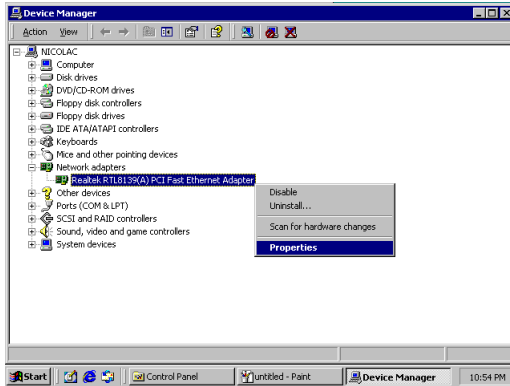


2. In the " System Properties" window, select the " Device Manag-  
er".

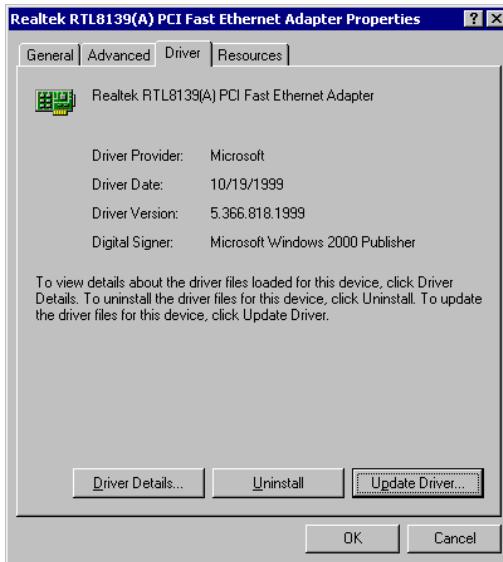




3. In "Device Manager" screen, follow the screen instructions, to click on "Properties".



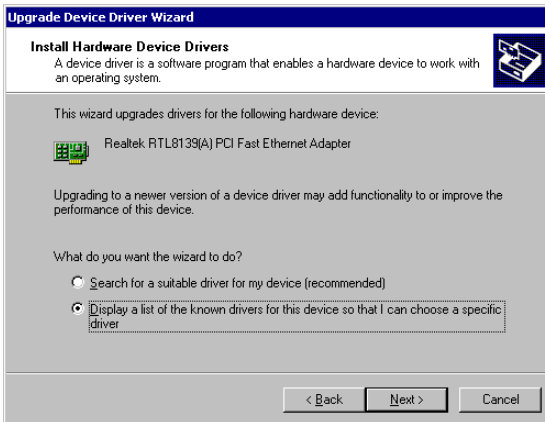
4. In the following screen, to click on "Update Driver".



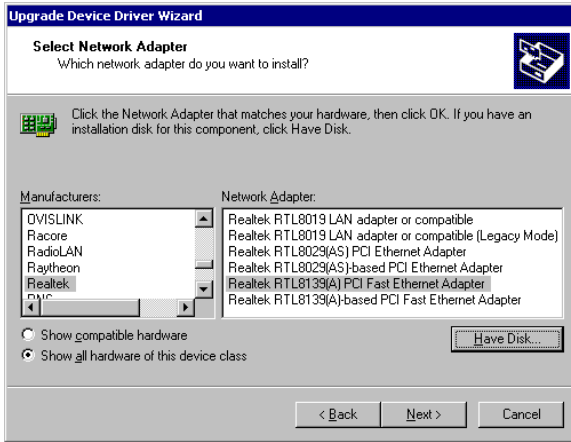
5. Click on "Next".



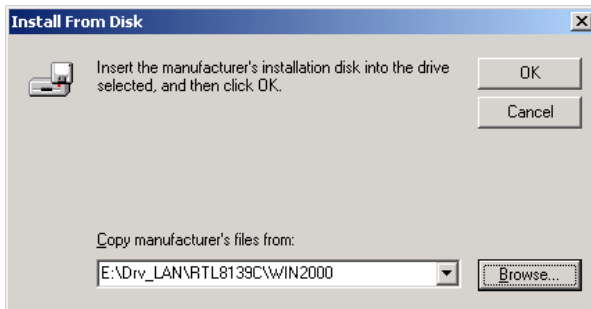
6. Following the highlighted item, and click on "Next".



7. Click on "Have Disk".



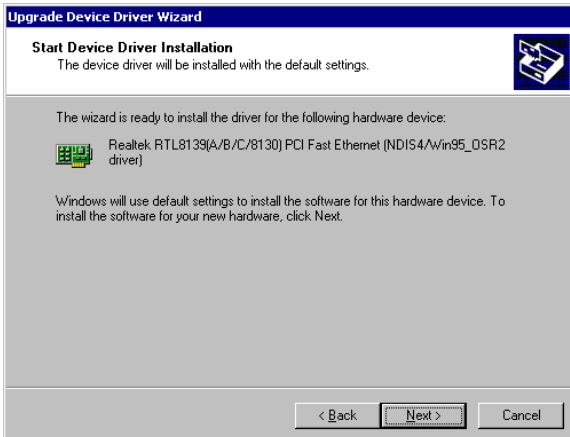
8. Key in "E:\Drv\_\_LAN\RTL8139C\WIN2000", then click on "OK".



9. To highlight the following item, and click "Next".



10. Click "Next".



11. Click "Finish" to complete the installation.





## **Programming the Watchdog Timer**

The PCA-6004 is equipped with a watchdog timer that resets the CPU or generates an interrupt if processing comes to a standstill for any reason. This feature ensures system reliability in industrial standalone or unmanned environments.

## A.1 Programming the Watchdog Timer

---

To program the watchdog timer, you must write a program which writes I/O port address 443 (hex). The output data is a time interval value. The value range is from 01 (hex) to 3F (hex), and the related time interval is 1 sec. to 63 sec.

<b>Data</b>	<b>Time Interval</b>
01	1 sec.
02	2 sec.
03	3 sec.
04	4 sec.
•	•
•	•
•	•
3F	63 sec.



After data entry, your program must refresh the watchdog timer by rewriting I/O port 443 (hex) while simultaneously setting it. When you want to disable the watchdog timer, your program should read I/O port 443 (hex).

The following example shows how you might program the watchdog timer in BASIC:

```
10      REM  Watchdog timer example program
20      OUT &H443, data REM  Start and restart the watchdog
30      GOSUB 1000 REM  Your application task #1,
40      OUT &H443, data REM  Reset the timer
50      GOSUB 2000 REM  Your application task #2,
60      OUT &H443, data REM  Reset the timer
70      X=INP (&H443) REM  Disable the watchdog timer
80      END

1000     REM  Subroutine #1, your application task
.       .
.       .
.       .
1070    RETURN
2000     REM  Subroutine #2, your application task
.       .
.       .
.       .
2090    RETURN
```



## Pin Assignments

This appendix contains information of a detailed or specialized nature. It includes:

- IDE Hard Drive Connector
- Floppy Drive Connector
- Parallel Port Connector
- SCSI Connector
- USB Connector
- VGA Connector
- Ethernet 10/100Base-T RJ-45 Connector
- COM1/COM2 RS-232 Serial Port
- Keyboard and Mouse Connector
- External Keyboard Connector
- IR Connector
- CPU Fan Power Connector
- Power LED and Keylock Connector
- External Speaker Connector
- Reset Connector
- HDD LED Connector
- ATX Feature Connector
- ATX Soft Power Switch
- SM Bus Connector
- Extension I/O Board Connector
- System I/O Ports
- DMA Channel Assignments
- Interrupt Assignments
- 1st MB Memory Map

# B.1 IDE Hard Drive Connector (CN1, CN2)

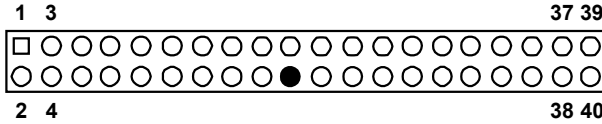


Table B-1: IDE hard drive connector (CN1, CN2)

Pin	Signal	Pin	Signal
1	IDE RESET*	2	GND
3	DATA 7	4	DATA 8
5	DATA 6	6	DATA 9
7	DATA 5	8	DATA 10
9	DATA 4	10	DATA 11
11	DATA 3	12	DATA 12
13	DATA 2	14	DATA 13
15	DATA 1	16	DATA 14
17	DATA 0	18	DATA 15
19	SIGNAL GND	20	N/C
21	DISK DMA REQUEST	22	GND
23	IO WRITE	24	GND
25	IO READ	26	GND
27	IO CHANNEL READY	28	GND
29	HDACKO*	30	GND
31	IRQ14	32	N/C
33	ADDR 1	34	N/C
35	ADDR 0	36	ADDR 2
37	HARD DISK SELECT 0*	38	HARD DISK SELECT 1*
39	IDE ACTIVE*	40	GND

\* low active

## B.2 Floppy Drive Connector (CN3)

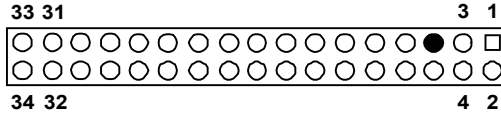


Table B-2: Floppy drive connector (CN3)

Pin	Signal	Pin	Signal
1	GND	2	FDHDIN*
3	GND	4	N/C
5	N/C	6	FDEDIN*
7	GND	8	INDEX*
9	GND	10	MOTOR 0*
11	GND	12	DRIVE SELECT 1*
13	GND	14	DRIVE SELECT 0*
15	GND	16	MOTOR 1*
17	GND	18	DIRECTION*
19	GND	20	STEP*
21	GND	22	WRITE DATA*
23	GND	24	WRITE GATE*
25	GND	26	TRACK 0*
27	GND	28	WRITE PROTECT*
29	GND	30	READ DATA*
31	GND	32	HEAD SELECT*
33	GND	34	DISK CHANGE*

\* low active

### B.3 Parallel Port Connector (CN4)

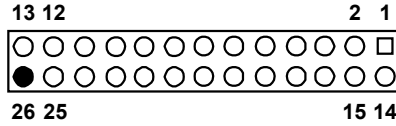


Table B-3: Parallel port connector (CN4)

Pin	Signal	Pin	Signal
1	STROBE*	14	AUTOFD*
2	D0	15	ERR
3	D1	16	INIT*
4	D2	17	SLCTINI*
5	D3	18	GND
6	D4	19	GND
7	D5	20	GND
8	D6	21	GND
9	D7	22	GND
10	ACK*	23	GND
11	BUSY	24	GND
12	PE	25	GND
13	SLCT	26	N/C

\* low active

## B.4 USB Connector (CN6)

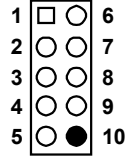


Table B-4: USB1/USB2 connector (CN6)

Pin	USB1 Signal	Pin	USB2 Signal
1	+5 V	6	+5 V
2	UV-	7	UV-
3	UV+	8	UV+
4	GND	9	GND
5	Chassis GND	10	N/C

## B.5 VGA Connector (CN7)

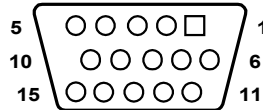


Table B-5: VGA connector (CN7)

Pin	Signal	Pin	Signal
1	RED	9	$V_{CC}$
2	GREEN	10	GND
3	BLUE	11	N/C
4	N/C	12	SDT
5	GND	13	H-SYNC
6	GND	14	V-SYNC
7	GND	15	SCK
8	GND		

## B.6 Keyboard and Mouse Connector (CN11)

---

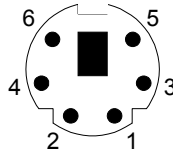


Table B-6: Keyboard and mouse connector (CN11)

Pin	Signal
1	KB DATA
2	MS DATA
3	GND
4	$V_{cc}$
5	KB CLOCK
6	MS CLOCK

## B.7 External Keyboard Connector (CN12)

---

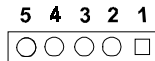


Table B-7: External keyboard connector (CN12)

Pin	Signal
1	CLK
2	DATA
3	NC
4	GND
5	$V_{cc}$



## B.8 IR Connector (CN13)

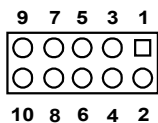


Table B-8: IR connector (CN13)

Pin	Signal	Pin	Signal
1	+5 V	2	N/C
3	FIRRX	4	CIRRX
5	IR_RX	6	+5VSB
7	GND	8	N/C
9	IR_TX	10	N/C

## B.9 CPU Fan Power Connector (CN14)



Table B-9: CPU fan power connector (CN14)

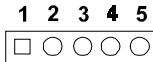
Pin	Signal
1	GND
2	+12 V
3	Detect

## B.10 Power LED and Keylock Connector (CN16)

---

You can use an LED to indicate when the CPU card is on. Pin 1 of CN16 supplies the LED's power, and Pin 3 is the ground.

You can use a switch (or a lock) to disable the keyboard so that the PC will not respond to any input. This is useful if you do not want anyone to change or stop a program which is running. Simply connect the switch from Pin 4 to Pin 5 of CN16.



---

Table B-10: Power LED and keylock connector (CN16)

---

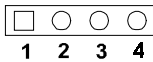
Pin	Function
1	LED power (+5 V)
2	NC
3	GND
4	Reserved
5	GND

---

## B.11 External Speaker Connector (CN17)

---

The CPU card has its own buzzer. You can also connect it to the external speaker on your computer chassis.



---

Table B-11: External speaker (CN17)

---

Pin	Function
1	+5 V <sub>CC</sub>
2	GND
3	Internal buzzer
4	Speaker out

---

## B.12 Reset Connector (CN18)

---



---

Table B-12: Reset connector (CN18)

---

Pin	Signal
1	RESET
2	GND

---

## B.13 HDD LED Connector (CN19)

---



---

Table B-13: HDD LED connector (CN19)

---

Pin	Signal
1	LED0 (LED-)
2	Vcc(LED+)

---

## B.14 ATX Feature Connector (CN20)

---



---

Table B-14: ATX feature connector (CN20)

---

Pin	Signal
1	PS-ON
2	V <sub>cc</sub>
3	V <sub>cc</sub> SB

---

## B.15 ATX Soft Power Switch (CN21)

---



---

Table B-15: ATX soft power switch (CN21)

---

<b>Pin</b>	<b>Signal</b>
1	5VSB
2	PWR-BTN

---

## B.16 SM Bus Connector (CN29)

---



---

Table B-16: SM Bus Connector (CN29)

---

<b>Pin</b>	<b>Signal</b>
1	SMB_DATA
2	SMB_CLK

---

## B.17 18-bit LCD Display Connector (CN41)

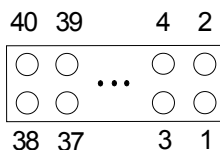


Table B-17: 18-bit LCD display connector

Pin	Signal	Pin	Signal
1	VDDSAFE5	2	VDDSAFE5
3	GND	4	GND
5	VDDSAFE3	6	VDDSAFE3
7	Vcon	8	GND
9	NC	10	NC
11	P17 (B0)	12	P16 (B1)
13	P11 (B2)	14	P10 (B3)
15	P9 (B4)	16	P8 (B5)
17	NC	18	NC
19	P15 (G0)	20	P14 (G1)
21	P7 (G2)	22	P6 (G3)
23	P5 (G4)	24	P4 (G5)
25	NC	26	NC
27	P13 (R0)	28	P12 (R1)
29	P3 (R2)	30	P2 (R3)
31	P1 (R4)	32	P0 (R5)
33	GND	34	GND
35	SFCLK	36	FLM
37	M	38	LP
39	ENBKL	40	ENAVEE

**Note:** The model number of the CN18 socket is DF13A-40DP-1.25V (Hirose Electric Co., Ltd.)

## B.18 Flat panel inverter power connector (CN42)

---

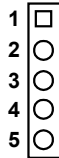


Table B-18

1	+12 V
2	GND
3	ENBKL
4	VBR
5	VCC

## B.19 AC-97 Audio Interface (CN43)

---

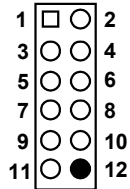


Table B-19

1	VCC	2	GND
3	SYNC	4	BITCLK
5	SDOUT	6	SDIN
7	SDIN2	8	-ACRST
9	+12V	10	GND
11	GND	12	NC

## B.20 System I/O Ports

---

Table B-20: System I/O ports

<b>Addr. range (Hex)</b>	<b>Device</b>
000-01F	DMA controller
020-021	Interrupt controller 1, master
022-023	Chipset address
040-05F	8254 timer
060-06F	8042 (keyboard controller)
070-07F	Real-time clock, non-maskable interrupt (NMI) mask
080-09F	DMA page register
0A0-0BF	Interrupt controller 2
0C0-0DF	DMA controller
0F0	Clear math co-processor
0F1	Reset math co-processor
0F8-0FF	Math co-processor
1F0-1F8	Fixed disk
200-207	Game I/O
278-27F	Parallel printer port 2 (LPT3)
290-297	On-board hardware monitor
2F8-2FF	Serial port 2
300-31F	Prototype card
360-36F	Reserved
378-37F	Parallel printer port 1 (LPT2)
380-38F	SDLC, bisynchronous 2
3A0-3AF	Bisynchronous 1
3B0-3BF	Monochrome display and printer adapter (LPT1)
3C0-3CF	Reserved
3D0-3DF	Color/graphics monitor adapter
3F0-3F7	Diskette controller
3F8-3FF	Serial port 1
2E-2F	Watchdog timer

## B.21 DMA Channel Assignments

---

Table B-21: DMA channel assignments

Channel	Function
0	Available
1	Available
2	Floppy disk (8-bit transfer)
3	Available
4	Cascade for DMA controller 1
5	Available
6	Available
7	Available

## B.22 Interrupt Assignments

---

Table B-22: Interrupt assignments

Priority	Interrupt#	Interrupt source
1	NMI	Parity error detected
2	IRQ0	Interval timer
3	IRQ1	Keyboard
-	IRQ2	Interrupt from controller 2 (cascade)
4	IRQ8	Real-time clock
5	IRQ9	Cascaded to INT 0A (IRQ 2)
6	IRQ10	Available
7	IRQ11	Available
8	IRQ12	PS/2 mouse
9	IRQ13	INT from co-processor
10	IRQ14	Fixed disk controller
11	IRQ15	Available
12	IRQ3	Serial communication port 2
13	IRQ4	Serial communication port 1
14	IRQ5	Parallel port 2
15	IRQ6	Diskette controller (FDC)
16	IRQ7	Parallel port 1 (print port)



## B.23 1st MB Memory Map

---

Table B-23: 1st MB memory map

Addr. range (Hex)	Device
F0000h - FFFFFh	System ROM
CC000h - EFFFFh	Unused
C0000h - CBFFFh	VGA BIOS
B8000h - BFFFFh	CGA/EGA/VGA text
B0000h - B7FFFh	Unused
A0000h - AFFFFh	EGA/VGA graphics
00000h - 9FFFFh	Base memory

## B.24 PCI Bus Map

---

Table B-24: PCI bus map

Function	Signals: Device ID	INT# pin	GNT# pin
Onboard LAN1	AD21	INT C	GNT E
PCI slot 1	AD31	INT B, C, D, A	GNT A
PCI slot 2	AD30	INT C, D, A, B	GNT B
PCI slot 3	AD29	INT D, A, B, C	GNT C
PCI slot 4	AD28	INT A, B, C, D	GNT D

