



OPERATOR'S MANUAL

CLAM SHELL GRASS CATCHER

Models: GC-SCZ48/52-CS



This manual contains the operating instructions and safety information for your Scag mower accessory. Reading this manual can provide you with assistance in maintenance and adjustment procedures to keep your mower accessory performing to maximum efficiency. The specific models that this book covers are listed on the inside cover. Before operating your machine, please read all the information enclosed.



WARNING

FAILURE TO FOLLOW SAFE OPERATING PRACTICES MAY RESULT IN SERIOUS INJURY OR DEATH.

- Read this manual completely as well as other manuals that came with your mower.
- DO NOT operate on steep slopes. To check a slope, attempt to back up it (with the cutter deck down). If the machine can back up the slope without the wheels slipping, reduce speed and use extreme caution.
- Under no circumstances should the machine be operated on slopes greater than 15 degrees. ALWAYS FOLLOW OSHA APPROVED OPERATION.
- DO NOT mow on wet grass. Wet grass reduces traction and steering control.
- Keep all shields in place, especially the grass discharge chute.
- Before performing any maintenance or service, stop the machine and remove the spark plug wire and ignition key.
- If a mechanism becomes clogged, stop the engine before cleaning.
- Keep hands, feet and clothing away from power-driven parts.
- Keep others off the mower (only one person at a time)

REMEMBER - YOUR MOWER IS ONLY AS SAFE AS THE OPERATOR!

HAZARD CONTROL AND ACCIDENT PREVENTION ARE DEPENDENT UPON THE AWARENESS, CONCERN, PRUDENCE, AND PROPER TRAINING OF THE PERSONNEL INVOLVED IN THE OPERATION, TRANSPORT, MAINTENANCE, AND STORAGE OF THE EQUIPMENT.

This manual covers the operating instructions and illustrated parts list for:

GC-SCZ48/52-CS

with a serial number of

J2900001 to J2999999

Always use the entire serial number listed on the serial number tag when referring to this product.

GENERAL INFORMATION

1.1 INTRODUCTION

This manual has been prepared to provide the information you need to correctly assemble, operate, and maintain this grass catcher. Read it carefully and keep it for future reference.

THE REPLACEMENT OF ANY PART ON THIS PRODUCT BY OTHER THAN THE MANUFACTURER'S AUTHORIZED REPLACEMENT PART MAY ADVERSELY AFFECT THE PERFORMANCE, DURABILITY OR SAFETY OF THIS PRODUCT.

USE OF OTHER THAN ORIGINAL SCAG REPLACEMENT PARTS WILL VOID THE WARRANTY.

If additional information or service is needed that is not outlined in this manual, please contact your Scag Power Equipment dealer. Scag dealers are trained in the latest service methods and carry a full line of Scag replacement parts.

When ordering parts, always provide the complete model number and serial number of your catcher.

All information provided in this manual is based upon information available at the time of printing. Scag Power Equipment reserves the right to make changes at any time without notice or obligation.

1.2 DIRECTION REFERENCE

The "Right" and "Left", "Front" and "Rear" of the machine are referenced from the operator's right and left when seated in the normal operating position and facing the forward travel direction.

1.3 SAFETY AND OPERATING INSTRUCTIONS

NOTE -

To avoid personal injury, it is imperative that all safety instructions be observed.

1. Read this operator's manual and the operator's manual that is supplied with the machine this attachment is used on.

A replacement manual is available from your authorized Scag Service Dealer or by contacting: Scag Power Equipment, Service Department at P.O. Box 152, Mayville, WI 53050. You may also contact us through our website at www.scag.com. The manual for this grass catcher can be downloaded by using the model and serial number or use the contact form to make your request. Please indicate the complete model and serial number of your Scag product when requesting replacement manuals.

WARNING

Do not operate without discharge chute, mulch kit, operator controlled discharge chute (OCDC), or entire grass catcher installed.

2. Before removing the grass bags, disengage the mower, stop the engine and wait for all movement to stop.
3. **ALWAYS** turn the engine **OFF**, remove the key and wait for all movement to stop before servicing or cleaning the mower or the grass catcher.

DANGER



**ROTATING BLOWER
BLADES**

**STOP ENGINE BEFORE
ENTERING CHUTE**

CONTACT CAN INJURE

4. Do not modify or alter any component of the grass catcher attachment or mower.
5. Do not allow any passengers to ride on the grass catcher attachment or on the mower.

1.4 GRASS CATCHER OPERATION

1. With the hopper door closed, engage the deck drive.
2. Proceed to mow until the hopper is full.
3. When dumping the hopper into a disposal area:

WARNING

Do not dump clippings in a disposal area that is burning.

Do not dump clippings in a disposal area that is on a steep slope.

Do not dump clippings into a drop off or over a retaining wall.

A. Disengage the deck drive, apply the parking brake and allow all moving parts to come to a complete stop.

B. Pull downward on the hopper door handle to allow the hopper sweeper to remove the material from inside the hopper. See Figure 1-1.

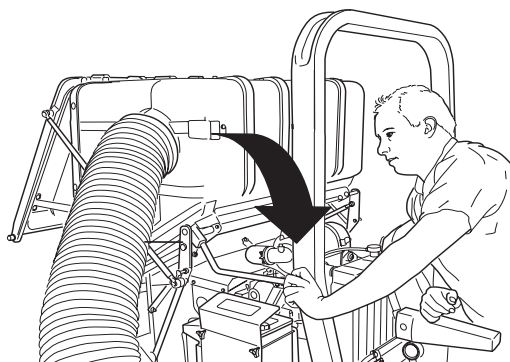


Figure 1-1. Dumping the Hopper

C. Once the material has been completely removed from the hopper, lift the hopper door handle to close the hopper door and lock into place. See Figure 1-2.

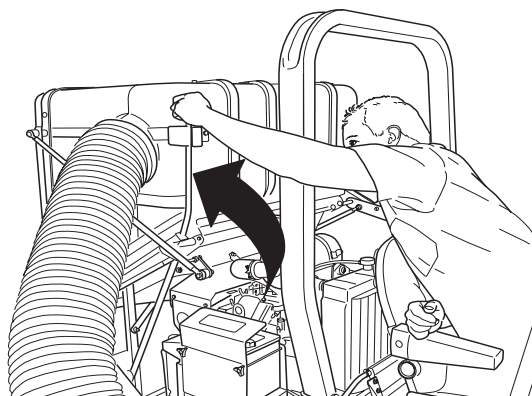


Figure 1-2. Closing the Hopper Door

4. When dumping the hopper into a disposal area, inspect the hopper debris screen for material. When the debris screen is full of material, the grass catching ability may suffer. Frequency of cleaning the hopper debris screen will vary depending on conditions.
5. To clean the hopper debris screen;
 - A. Disengage the deck drive and allow all moving parts to come to a complete stop.
 - B. Apply parking brake and shut off the engine.
 - C. Stand on the left side of the hopper assembly.
 - D. Unhook the debris screen latches and remove the debris screen from the hopper. See Figure 1-3.

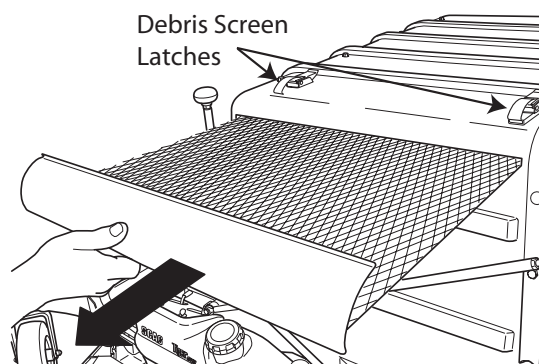


Figure 1-3. Cleaning the Hopper Debris Screen

- E. Remove material from the debris screen and reinstall. Secure by latching the debris screen latches.
6. When service is needed inside the hopper, disengage the deck drive and allow all moving parts to come to a complete stop. Shut off the engine and apply the parking brake. Rotate the hopper door prop rod upward until it contacts the hopper door. This will prevent the hopper door from moving until the service is complete. See Figure 1-4.

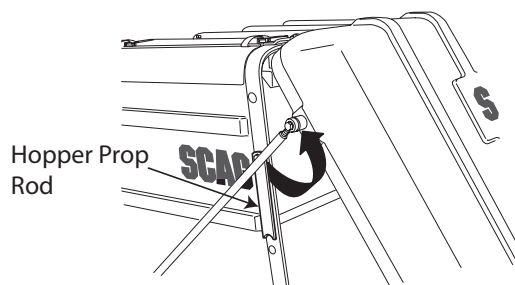


Figure 1-4. Hopper Door Prop Rod

2.1 ASSEMBLY INSTRUCTIONS

- NOTE -

Use the illustrated parts list as a part number reference when following the assembly instructions.

1. Remove all packaging materials. Lay out the mounting hardware and the catcher assembly parts for easy access. Prepare the work area making sure that it is a clean, safe environment.

! WARNING

Do not operate without discharge chute, mulch kit, operator controlled discharge chute (OCDC), or entire grass catcher installed.

2. Remove the discharge chute from the cutter deck. See Figure 2-1.

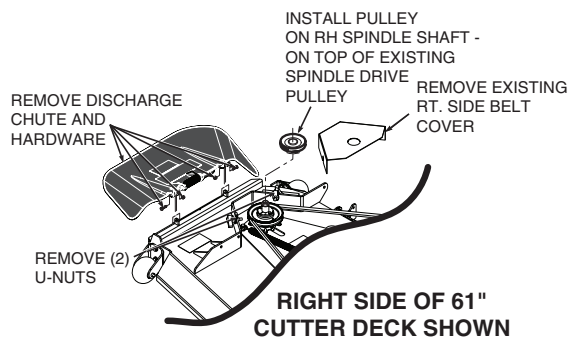
- NOTE -

Do not discard the discharge chute or mounting hardware. The discharge chute MUST be reinstalled any time the grass catcher has been removed from the machine.

3. Remove the right side belt cover to gain access to the spindle assembly. Remove the front u-nut from the cutter deck bracket. See Figure 2-1.

- NOTE -

Retain the original belt cover. This cover MUST be reinstalled any time the complete catcher system is removed.



(Note: Some parts not shown for viewing purposes.)

Figure 2-1. Discharge Chute Removal

4. Install the grass catcher pulley onto the spindle assembly. Apply loctite to both pulley setscrews and tighten. See Figure 2-1.
5. Remove the "Turbo" baffle from the cutter deck. Using the original hardware, install the new "Turbo" baffle. Install the baffle weldment. See Figure 2-2.

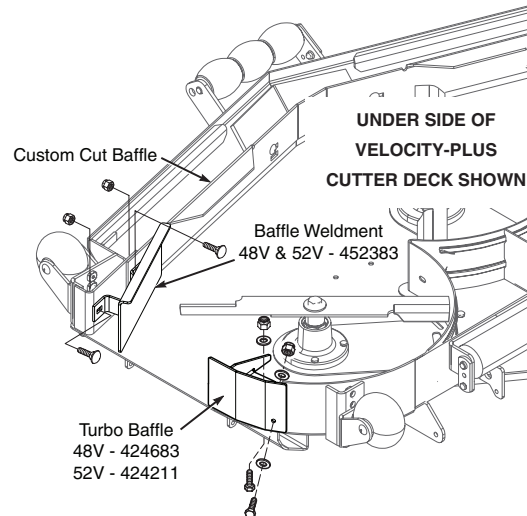


Figure 2-2. Grass Catcher Baffles

- NOTE -

Do not discard the original "Turbo" baffle. This baffle may be reinstalled any time the grass catcher has been removed from the machine.

6. Install the blower mounting bracket to the deck using carriage bolts (p/n 04003-11), lockwashers, and nuts. Do not fully tighten the hardware at this time. See Figure 2-3.

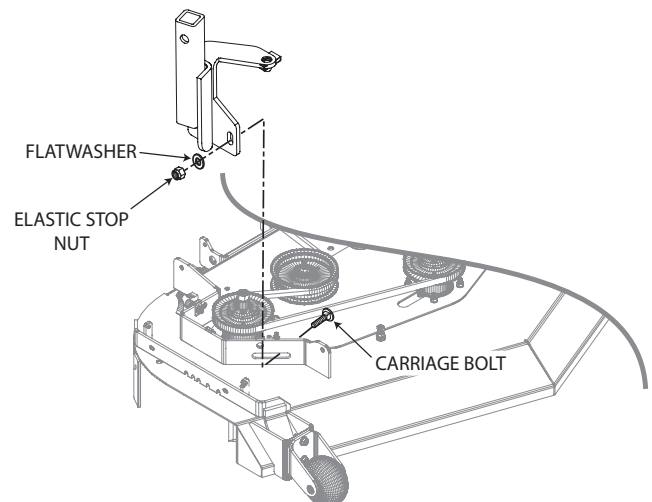


Figure 2-3. Blower Mounting Post Installation

7. Units equipped with a 48" cutter deck will need to have the right hand front cutter deck hang chain replaced with the brackets included with this grass catcher accessory. For 52" units, proceed to step 10.
8. Remove the cutter deck hang chain and hardware from the right front corner of the cutter deck.
9. Install the cutter deck lift link (p/n 426025) and secure using the hardware provided. See Figure 2-4.

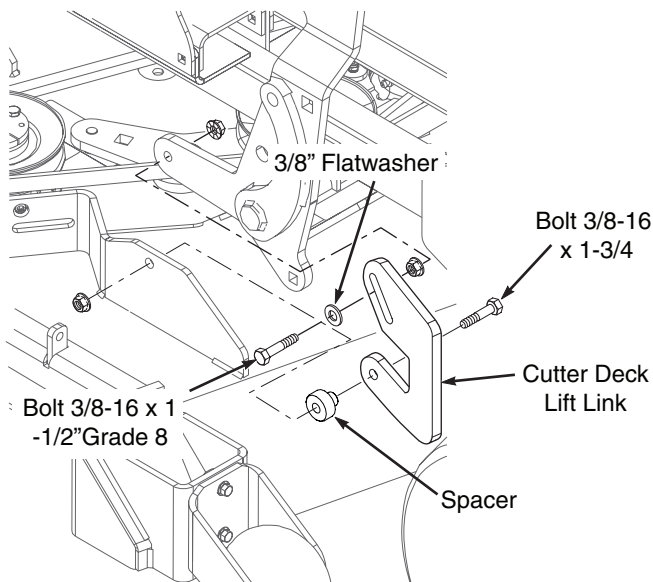


Figure 2-4. 48" Cutter Deck Bracket Installation

10. Install the blower assembly to the mounting bracket and secure with the mounting pin. See Figure 2-5.
11. Align the blower assembly with the discharge opening of the cutter deck. Tighten the hardware for the mounting bracket. See Figure 2-5.
12. Install the quick pin through the rear hole in the discharge chute mounting bracket. See Figure 2-5.

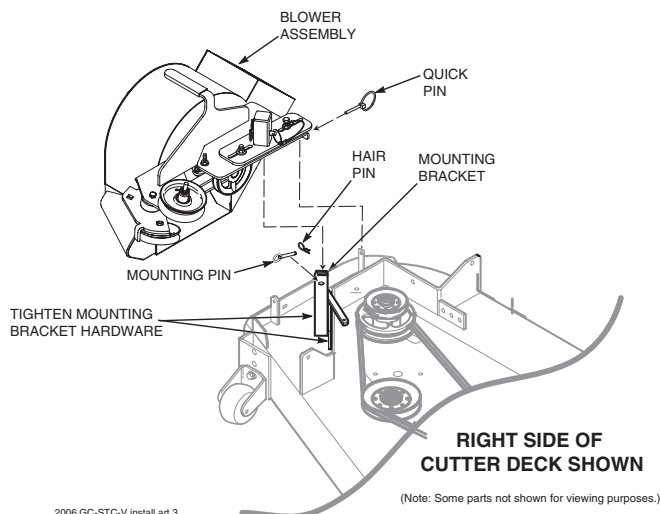


Figure 2-5. Blower Installation

13. Install the belt to the spindle pulley. When replacing the belt. See Figure 2-6.

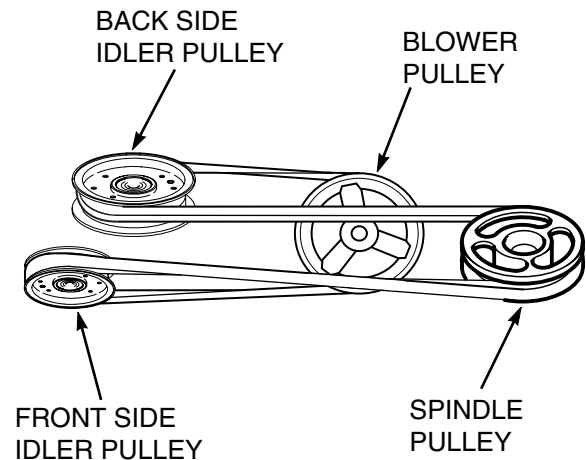


Figure 2-6. Belt Routing

14. Install the new belt covers and secure. See items number 1 and number 21 on page 12 of the Blower Mounting Components section in this manual for proper installation.
15. Remove the rear skid plate mounting hardware from the outside two holes. See Figure 2-7.
16. Install the mounting pins and spacers on to the rear of the machine. Secure using EIGHT (8) 3/8-16 x 1" hex head bolts, and six (6) 3/8-16 elastic stop nuts. See Figure 2-8.

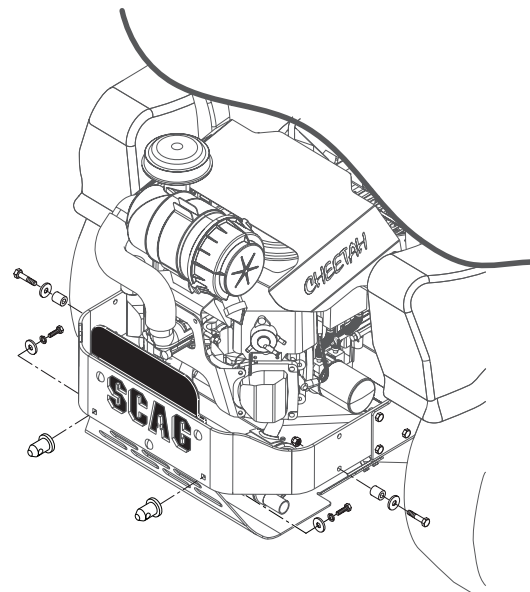


Figure 2-7. Hopper Mounting Hardware Install

17. With help from an assistant, install the hopper assembly to the machine and secure with the ring pins. See Figure 2-8.

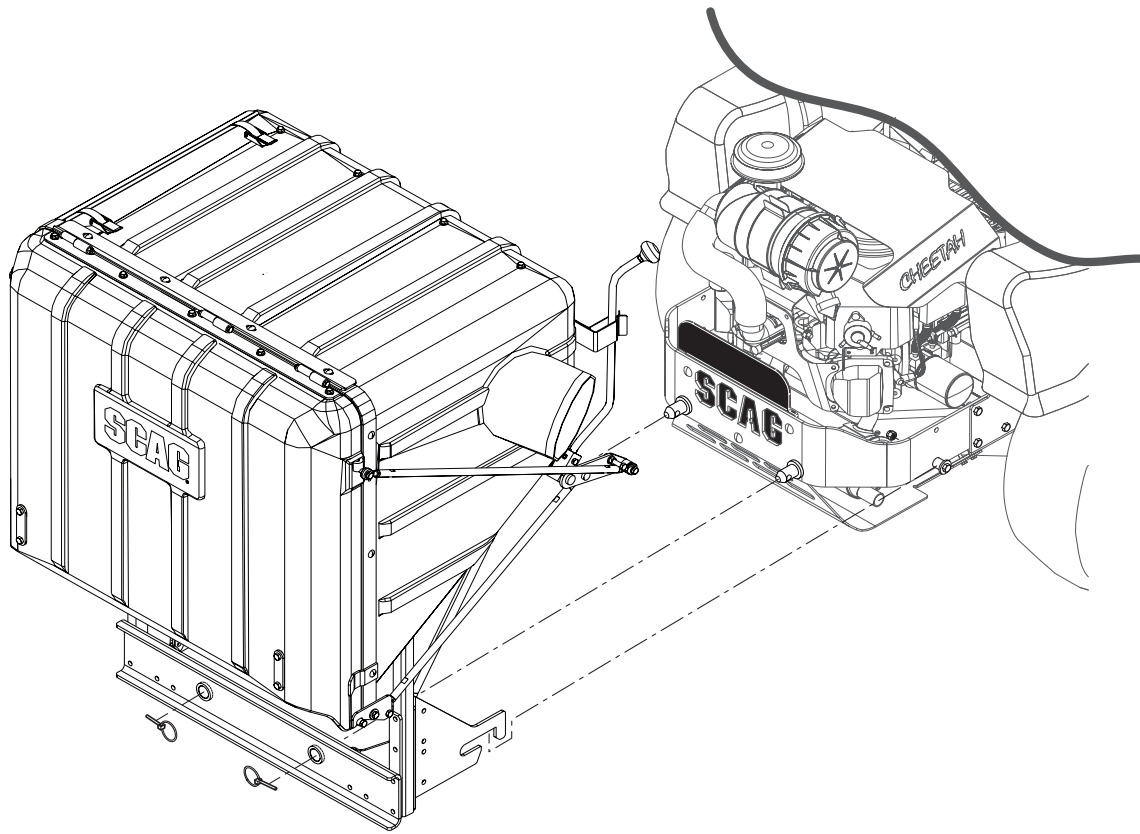


Figure 2-8. Hopper Installation

18. Install the hose from the blower assembly adapter to the hopper hood and secure using the 8-5/8" clamps.
19. Using the weight support bar as a guide, identify the two corresponding mounting holes, and the existing hardware that will need to be removed in order to secure the weight support bar to the front of the machine as shown. See Figure 2-9.
20. Install one 7/16-14 x 1-3/4" hex head bolt into each of the two mounting holes in the weight support bar, and through the matching holes in the caster support weldment. Secure this assembly to the front of the machine using the 7/16- .5" x 1-1/4" x .083" flatwashers, and the 7/16-14 elastic stop nuts. Torque hardware to 59 ft. lbs. See Figure 2-9.

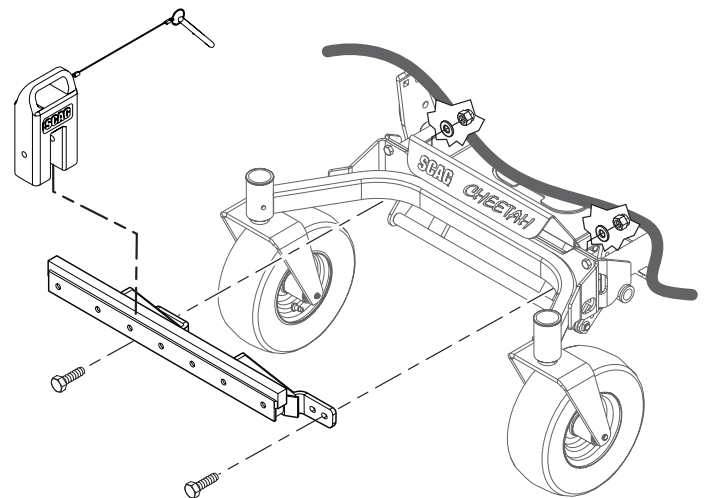


Figure 2-9. Weight Support Bar Install

21. Install weights onto weight bar.
22. Operate and test.

3.1 GRASS CATCHER REMOVAL INSTRUCTIONS

Prepare the machine so there is easy and safe access to the work area. Park the machine on a flat, level surface and apply the parking brake. Remove the ignition key and disconnect the positive and negative cables from the battery. Maintain all safety related work procedures. Always wear hand and eye protection.

- NOTE -

For best overall performance and dispersal of grass clippings while side discharging, the grass catcher discharge baffle should be removed and the original turbo baffle should be reinstalled.

1. Remove the rubber strap holding the adapter to the blower assembly and the large quick pin securing the blower to the discharge mounting bracket. See Figure 3-1.
2. Remove the belt, pin, hair pin and large quick pin securing the blower assembly to the cutter deck and remove the blower assembly. See Figure 3-1.

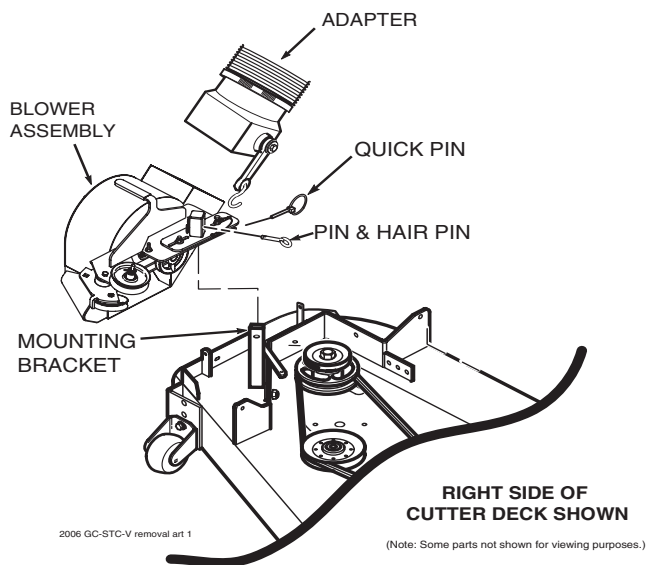


Figure 3-1. Removing the Blower Assembly

3. Remove the ring pins securing the hopper assembly to the rear of the machine.
4. With help from an assistant, remove the hopper assembly.

WARNING

Do not operate without discharge chute, mulch kit, operator controlled discharge chute (OCDC), or entire grass catcher installed.

5. Re-install the side discharge chute to the opening on the cutter deck. Replace the two (2) outside mounting bolts on the discharge chute with the clevis pins (p/n 04064-15) and rue cotter pins (p/n 04069-03). See Figure 3-2.
6. Re-install the cutter deck belt cover.
7. Remove the weights from the weight bar.

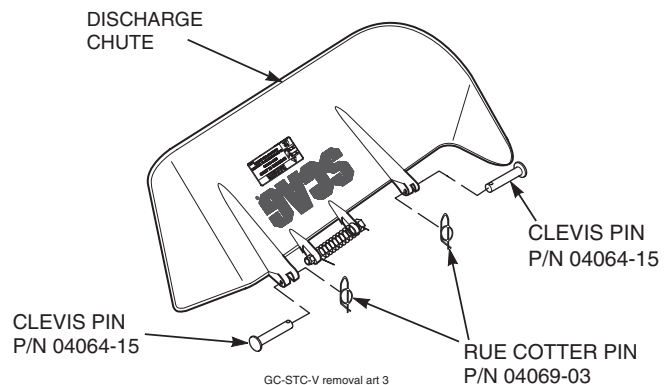


Figure 3-2. Reinstalling the Discharge Chute

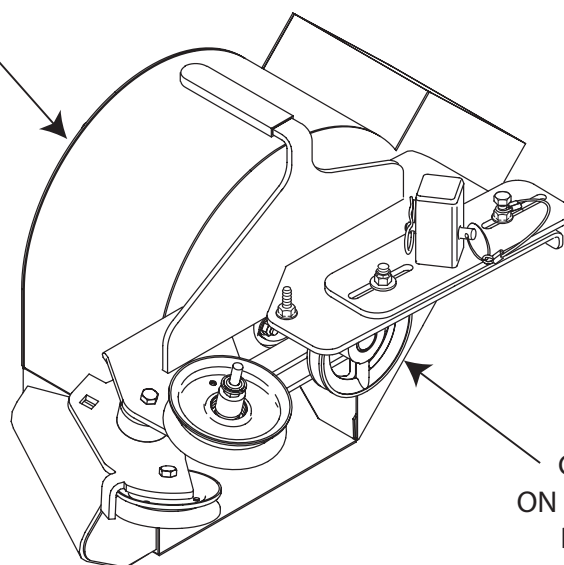
MAINTENANCE

4.1 MAINTENANCE CHART - RECOMMENDED SERVICE INTERVALS

Break-In (First 10)	HOURS						Procedure	Comments
	8	20	40	100	200	500		
X							Check all hardware for tightness	
X							Inspect hose and adapter	
X							Check belt for proper alignment	
X							Inspect fabric bags	
	X						*Check screen in hopper	Remove debris from screen
	X						Inspect hose and adapter	
	X						Inspect fabric bags	
	X						Check condition of blower	
	X						*Apply grease to blower bearings	See figure below
		X					Check belt for proper alignment	

* Perform these maintenance procedures more frequently under extreme dusty or dirty conditions.

GREASE FITTING
ON BEARING HOUSING



GREASE FITTING
ON BEARING HOUSING
BEHIND PULLEY

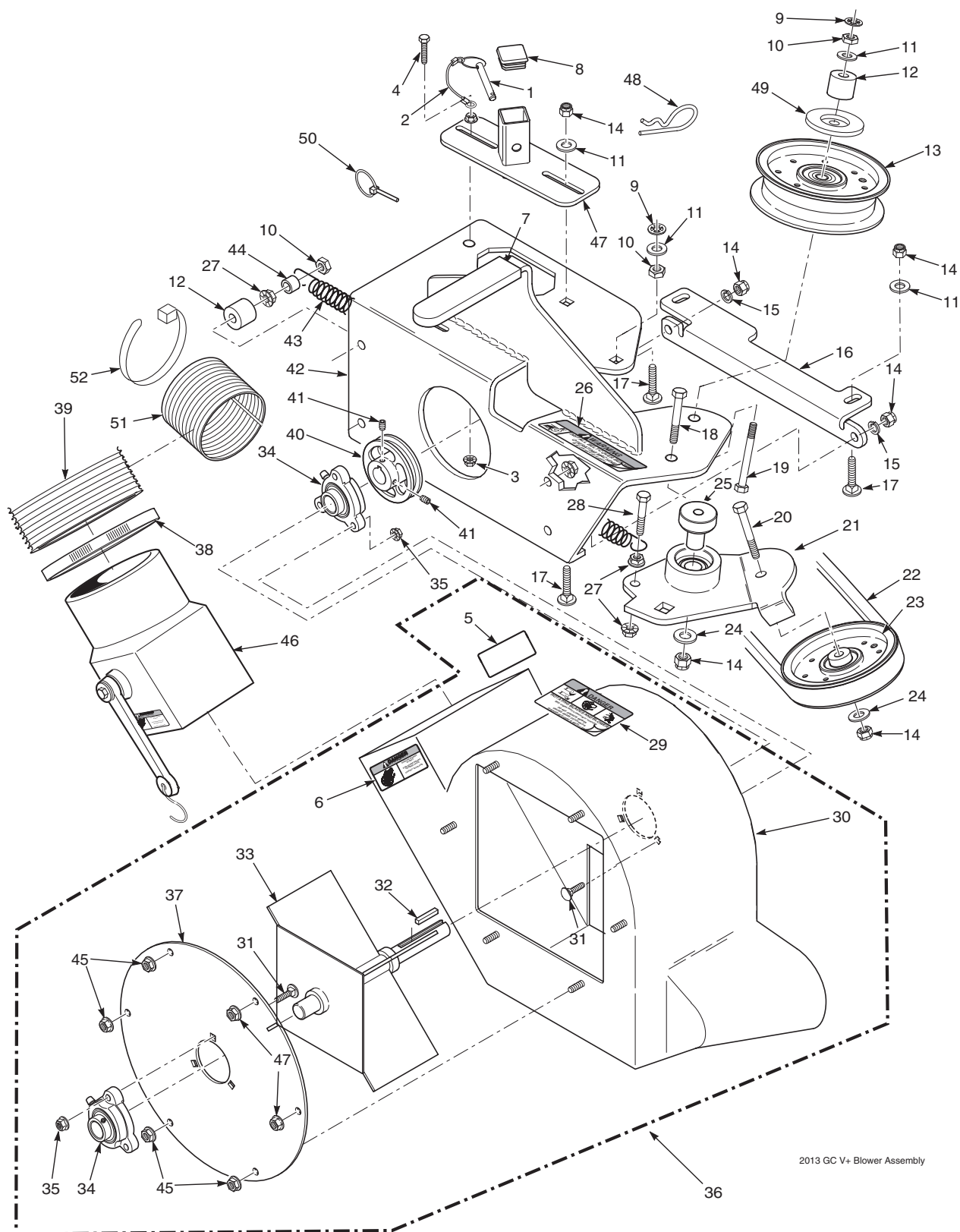
ILLUSTRATED PARTS LIST

4.1 SCAG APPROVED ATTACHMENTS AND ACCESSORIES.

Attachments and accessories manufactured by companies other than Scag Power Equipment are not approved for use on this machine.

NOTES

GC 48" & 52" BLOWER HOUSING ASSEMBLY

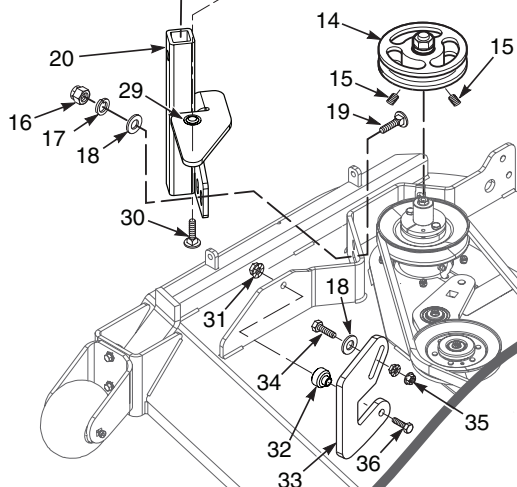
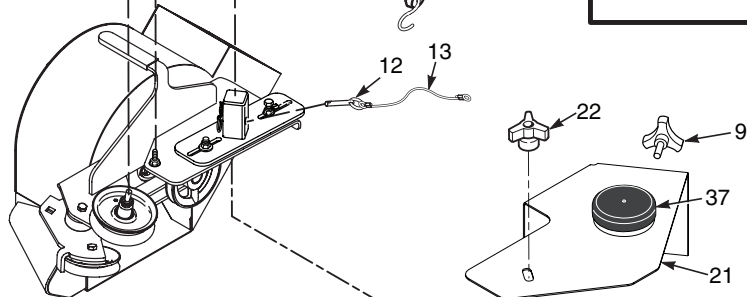
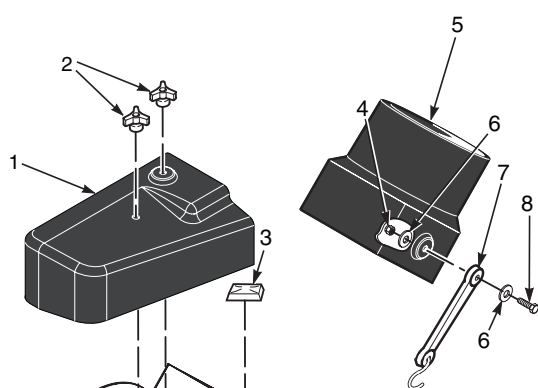
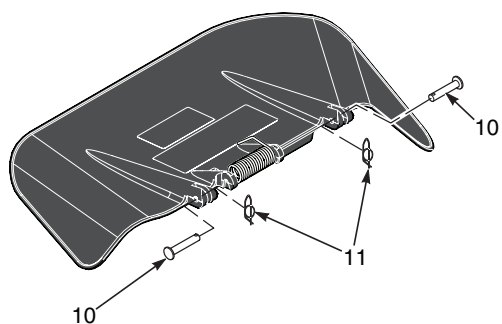


2013 GC V+ Blower Assembly

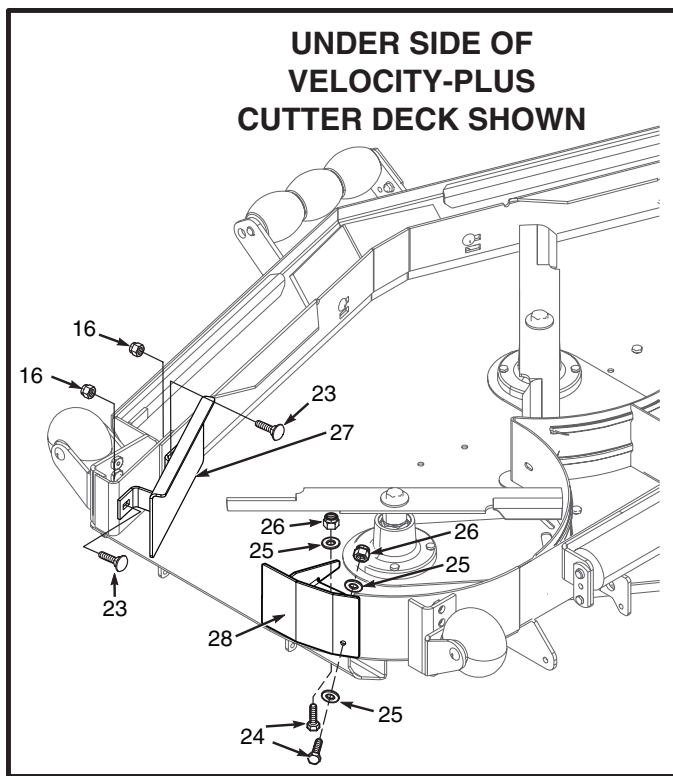
GC 48" & 52" BLOWER HOUSING ASSEMBLY

Ref. No.	Part No.	Description
1	04067-07	Pin, Ring 2-1/4" Long
2	481547	Lanyard, Deck Height Pin
3	04019-02	Nut, Serr. Flange 1/4-20
4	04019-02	Bolt, Hex Head 1/4-20 x 1-1/4"
5	483392	Decal, Blower
6	483393	Decal, Rotating Blower
7	481428	Grip, Blower Lever
8	483223	Cap, Square
9	04024-02	Nut, Push On 3/8 Thread
10	04021-05	Lock Nut, 3/8-16
11	04041-07	Flatwasher, 3/8-.391 x .938 x .105
12	43277	Spacer
13	483173	Pulley, Idler 3-1/2" Dia.
14	04021-09	Nut, Elastic Stop 3/8-16
15	04030-04	Lockwasher, 3/8-16
16	424361	Plate, Catcher Mounting
17	04003-05	Bolt, Carr. 3/8-16 x 1-1/2"
18	04001-54	Bolt, Hex Head 3/8-16 x 3" - 52"
19	04001-81	Bolt, Hex Head 3/8-16 x 3-1/2"
20	04001-21	Bolt, Hex Head 3/8-16 x 1-3/4"
21	461939	Idler Arm Assembly
22	483327	Belt, GC-SCZ-48V
	484728	Belt, GC-SCZ-52V
23	483189	Pulley, 3-1/2" O.D., GC-STC
24	04043-04	Washer, 3/8 Hardened
25	43503	Pivot, Idler
26	483402	Decal, Belt Cover
27	04019-04	Nut, Serr. Flange 3/8-16
28	04001-136	Bolt, Hex Head 3/8-16 x 1-1/2 Gr. 8
29	483391	Decal, Danger
30	461931	Blower Housing Weldment
31	04003-12	Bolt, Carr. 5/16-18 x 3/4" Gr. 5
32	04063-06	Key, 1/4 x 1/4 x 1-1/2"
33	461796	Fan Weldment
34	483034	Bearing Assembly
35	04021-10	Nut, Elastic Stop 5/16-18
36	461930	Blower Housing Assembly, GC-STT
37	421319	Cover, Blower Housing
38	48136-02	Clamp, 8-5/8" Max Dia.
39	462536	Hose, 8.00" Dia. x 53" Long (incl. #51, 52)
40	482298	Pulley, 4-3/4" O.D. - 1" Bore
41	04012-04	Set Screw, 5/16-18 x 3/8"
42	462553	Frame, Blower Mount
43	481522	Spring, Main Drive
44	43212	Spacer
45	04019-03	Nut, Serr. Flange 5/16-18
46	461723	Adapter w/Strap
47	451821	Receiver Weldment, Mounting Post
48	04062-04	Hair Pin Cotter, .177 x 3-1/4"
49	424367	Dust Shield
50	424367	Quick Pin, 5/16" Dia.
51	48135-16	Hose, 8" Dia. x 24" Split
52	48028-11	Cable Tie, .345 X 31.5 Black

GC-SCZ 48" & 52" BLOWER MOUNTING COMPONENTS



**UNDER SIDE OF
VELOCITY-PLUS
CUTTER DECK SHOWN**

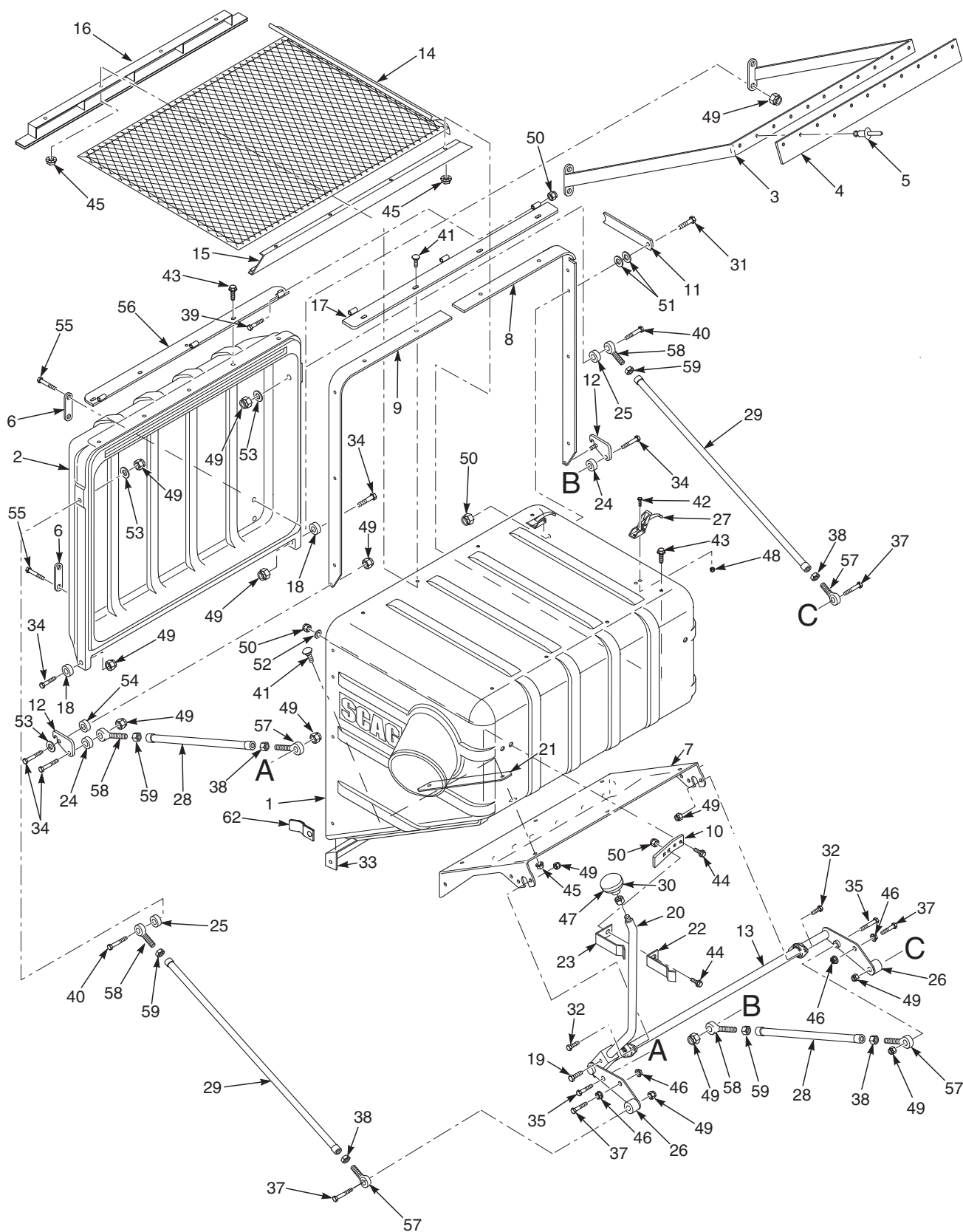


**RIGHT SIDE OF 48"
CUTTER DECK SHOWN**

GC-SCZ 48" & 52" BLOWER MOUNTING COMPONENTS

Ref. No.	Part No.	Description
1	484679	Belt Cover, 48"
	484685	Belt Cover, 52"
2	04029-04	Wingnut, Plastic 3/8" Small
3	483223	Cap, Square Vinyl
4	04021-08	Nut, Elastic Stop 1/4-20
5	461723	Adapter, Blower GC-STC, includes item #7
6	04040-14	Flatwasher, 1/4-.312 x .750 x .065
7	48137-04	Rubber Strap 7-3/4"
8	04001-59	Bolt, Hex Head 1/4-20 x 1-1/4"
9	481625-01	Knob W/Stud, 3/8-16 x 1-1/4"
10	04064-15	Clevis Pin, 5/16 x 1-1/2"
11	04069-03	Pin, Rue Cotter 5/16 Dia.
12	04067-07	Pin, Ring 1/2 x 2-1/4"
13	481547	Lanyard
14	482587	Pulley, 4.0" Dia. 1.125 Bore
15	04012-04	Setscrew, 5/16-18 x 3/8"
16	04021-09	Nut, Elastic Stop 3/8-16
17	04030-04	Lockwasher, 3/8"
18	04041-07	Flatwasher, 3/8-.391 x .938 x .105
19	04003-11	Bolt, Carr. 3/8-16 x 1-1/4" Grade 5
20	461894	Mounting Post Weldment, Blower
21	462549	Belt Cover Assembly, w/Cap - 48"
	462550	Belt Cover Assembly, w/Cap - 52"
22	04029-04	Wing Nut, 3/8 Plastic - Small
23	04003-23	Bolt, Carriage 3/8-16 x 1"
24	04001-09	Bolt, Hex Head 5/16-18 x 1"
25	04040-15	Flatwasher, 5/16-.375 x .875 x .083
26	04021-10	Nut, Elastic Stop 5/16-18
27	452383	Baffle Weldment 48 / 52
28	424683	Baffle, Turbo 48" Deck
	424211	Baffle, Turbo 52" Deck
29	04024-02	Nut, Push-On 3/8 Thread
30	04003-22	Bolt, Carriage 3/8-16 x 1-1/4"
31	04019-04	Nut, Serrated Flange 3/8-16
32	43606	Sleeve
33	452393	Bracket
34	04001-136	Bolt, Hex Head 3/8-16 x 1-.40" Grade 8
35	04019-04	Nut, Serrated Flange 3/8-16
36	04001-21	Bolt, Hex Head 3/8-16 x 1-3/4"
37	484368	Cap, Spindle

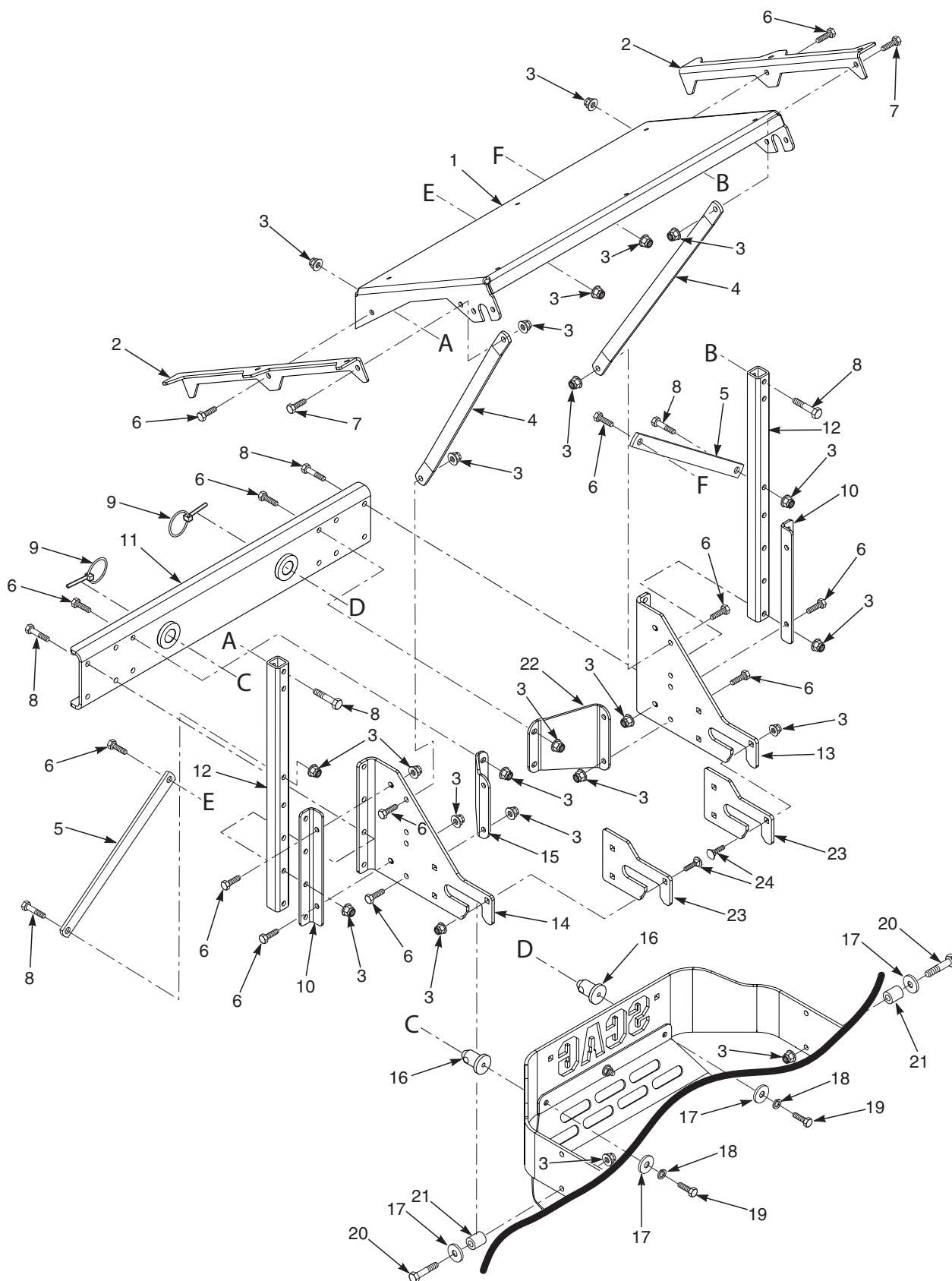
GC-SCZ48 / 52-CS HOPPER COMPONENTS



GC-SCZ48 / 52-CS HOPPER COMPONENTS

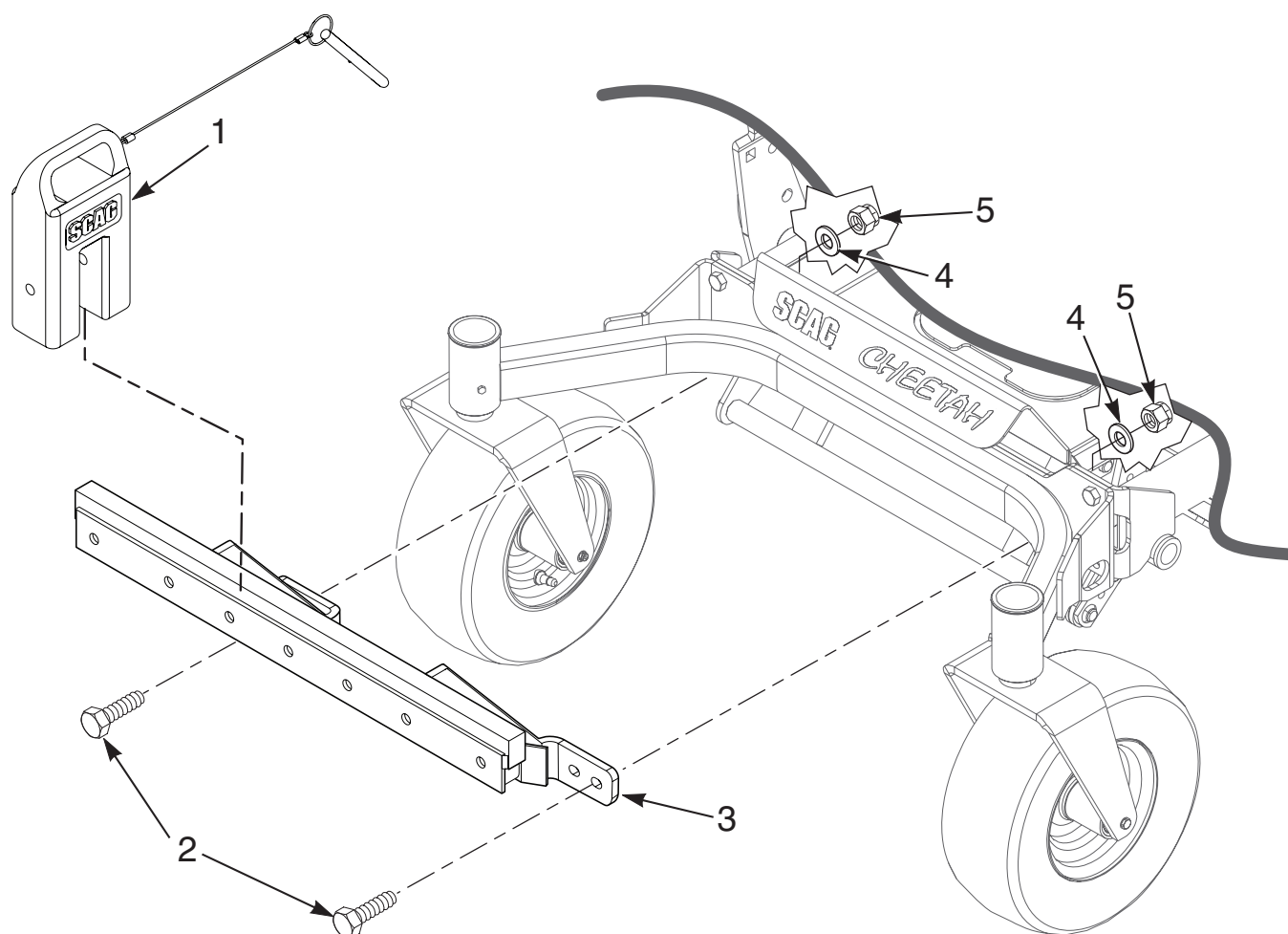
Ref. No.	Part No.	Description	Ref. No.	Part No.	Description
1	483038	Hopper, GC-STT-CS	38	04020-25	Nut, 3/8-24 UNF RH Thread
2	482732	Door, GC-CS	39	04001-63	Bolt, Hex Head 5/16-18 x 3-1/2"
3	461626	Sweeper Weldment, GC-CS	40	04001-77	Bolt, Hex Head 3/8-16 x 3-1/2"
4	482777	Pad, Rubber	41	04003-04	Bolt, Carriage 5/16-18 x 1"
5	04090-02	Pop Rivet, 3/16 x .652	42	04010-01	Screw, #10-32 x 1/2"
6	423834	Plate, Stiffener	43	04017-16	Cap Screw, 5/16-18 x 3/4" Serr. Flan.
7	426019	Support Frame, Hopper	44	04017-17	Cap Screw, 5/16-18 x 1" Serr. Flan.
8	423849	Hinge Bracket, LH	45	04019-03	Nut, 5/16-18 Serrated Flange
9	423850	Hinge Bracket, RH	46	04019-04	Nut, 3/8-16 Serrated Flange
10	425802	Mounting Bracket, Dump Handle Latch	47	04020-12	Nut, 3/8-16 UNC Jam
11	423837	Latch, Door Prop	48	04021-01	Nut, #10-32 Elastic Stop
12	423840	Plate, Latch	49	04021-09	Nut, 3/8-16 Elastic Stop
13	451980	Bellcrank Weldment, Upper	50	04021-10	Nut, 5/16-18 Elastic Stop
14	451601	Debris Screen Weldment	51	04032-01	Washer, Special Wave
15	451602	Screen Support Weldment, Rear	52	04040-15	Washer, 5/16-.375 x .875 x .083 Flat
16	451603	Screen Support Weldment, Front	53	04041-07	Washer, 3/8-.931 x .938 x .105 Flat
17	451607	Hinge Weldment, Hopper	54	43642	Bushing, Hopper Latch GC-CS
18	43631	Spacer	55	04001-54	Bolt, Hex Head 3/8-16 x 3"
19	04001-12	Bolt, Hex Head 5/16-18 x 1-3/4"	56	451598	Hinge Weldment, Door
	04012-10	Nut, 5/16-18 Elastic Stop (Not Shown)	57	481539	Rod End Male, 3/8-24 RH Thread
20	44185	Rod, Dump Lever GC-SCZ-CS	58	481538	Rod End Male, 3/8-24 LH Thread
21	423836	Retainer Strip, Hopper	59	04020-26	Nut, 3/8-24 UNF LH Thread
22	424405	Latch, Dump Rod Inner			
23	424406	Latch, Dump Rod Outer			
24	43063	Spacer			
25	43282	Spacer			
26	43277	Spacer			
27	481309	Latch, Hood			
28	43641	Linkage Assembly, Lower			
29	43640	Linkage Assembly, Upper			
30	481245	Knob			
31	04001-10	Bolt, Hex Head 5/16-18 x 1-1/4"			
32	04001-18	Bolt, Hex Head 3/8-16 x 3/4"			
33	423855	Bracket, Lower Stiffener			
	423859	Backing Plate, Hopper (Not Shown)			
34	04001-20	Bolt, Hex Head 3/8-16 x 1-1/2"			
35	04001-21	Bolt, Hex Head 3/8-16 x 1-3/4"			
36	423865	Alignment Bracket, GC-CS			
37	04001-45	Bolt, Hex Head 3/8-16 x 2"			

GC-SCZ48 / 52-CS HOPPER SUPPORT COMPONENTS



GC-SCZ48 / 52-CS HOPPER SUPPORT COMPONENTS

Ref. No.	Part No.	Description
1	426019	Support Frame, Hopper
2	426020	Bracket, Hopper Support
3	04117-02	Nut, Elastic Flange 3/8-16
4	426021	Brace, Stiffener
5	422386	Brace, Engine Mount
6	04001-19	Bolt, Hex Head 3/8-16 x 1"
7	04001-32	Bolt, Hex Head 3/8-16 x 1-1/4"
8	04001-46	Bolt, Hex Head 3/8-16 x 2-1/4"
9	04066-04	Quick Pin
10	426012	Mounting Bracket, Tube
11	452382	Mounting Bracket Weldment
12	426015	Tube, Upright
13	426011	Mounting Bracket, GC R.H.
14	426010	Mounting Bracket, GC L.H.
15	426017	Angle Bracket, GC
16	43884	Pin, GC Locator
17	04041-11	Flatwasher, 3/8-.406 x 1.50 x 7 Ga.
18	04030-04	Lockwasher, 3/8"
19	04001-32	Bolt, Hex Head 3/8-16 x 1-1/4"
20	04001-46	Bolt, Hex Head 3/8-16 x 2-1/4"
21	43886	Spacer
22	426016	Angle Bracket, GC
23	426024	Wear Plate, GC
24	04003-22	Bolt, Carriage 3/8-16 x 1-1/4"

FRONT WEIGHT COMPONENTS

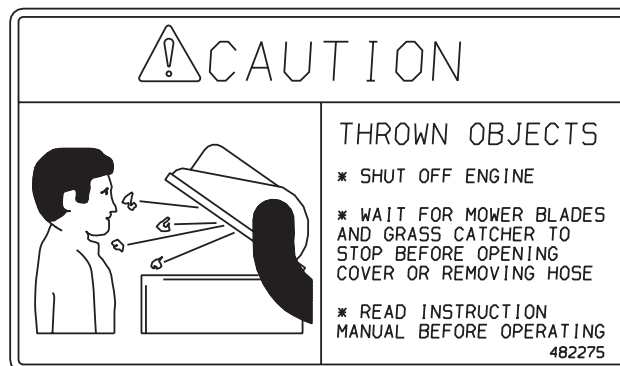
FRONT WEIGHT COMPONENTS

Ref. No.	Part No.	Description
1	9009	Weight Assembly
2	04001-117	Bolt, Hex Head 7/16-14 x 1-3/4"
3	452386	Support Weldment, Weights
4	04040-11	Flatwasher, 7/16-.500 x 1-1/4"
5	04021-11	Nut, Elastic Stop 7/16-14

GC-SCZ 48/52 DECALS



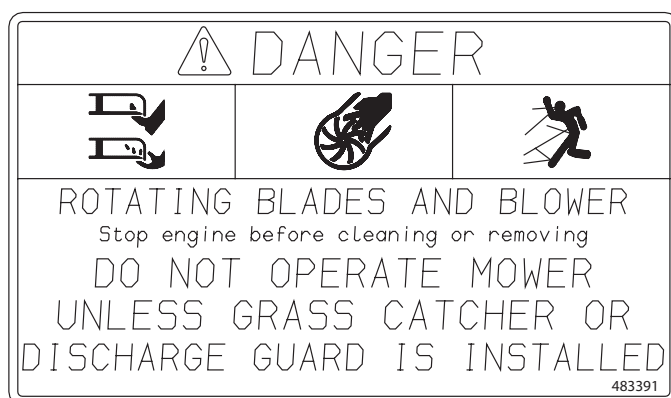
483402



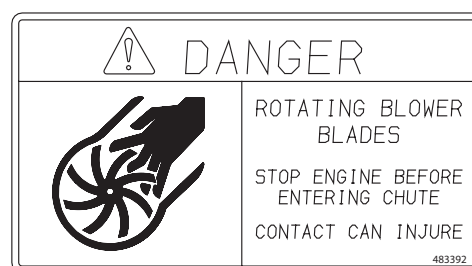
482275



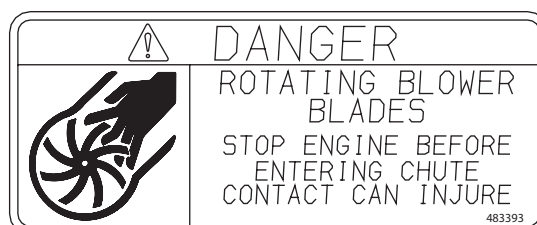
481327



483391



483392



483393

LIMITED WARRANTY- COMMERCIAL ACCESSORY

Any part of the Scag commercial accessory manufactured by Scag and found, in the reasonable judgment of Scag, to be defective in material or workmanship, will be repaired or replaced by an Authorized Scag Service Dealer without charge for parts and labor.

The Scag accessory, including any defective part, must be returned to an Authorized Scag Service Dealer within the warranty period. The expense of delivering the accessory to the dealer for warranty work and the expense of returning it back to the owner after repair or replacement will be paid for by the owner. Scag's responsibility in respect to claims is limited to making the required repairs or replacements, and no claim of breach of warranty shall be cause for cancellation or rescission of the contract of sale of any Scag machine. Proof of purchase will be required by the dealer to substantiate any warranty claim. All warranty work must be performed by an Authorized Scag Service Dealer.

This warranty is limited to 90 days from the date of original retail purchase for any Scag accessory that is used for commercial purposes, or any other income-producing purpose including rental use.

The warranty for the grass catcher blower assemblies (excluding the belt) is limited to 1-year from the date of original retail purchase. 90 Days for rental use.

This warranty does not cover any accessory that has been subject to misuse, neglect, negligence, or accident, or that has been operated in any way contrary to the operating instructions as specified in the Operator's Manual. The warranty does not apply to any damage to the accessory that is the result of improper maintenance, or to any accessory or parts that have not been assembled or installed as specified in the Operator's Manual.

The warranty does not cover any accessory that has been altered or modified. In addition, the warranty does not extend to repairs made necessary by normal wear, or by the use of parts or accessories which, in the reasonable judgment of Scag, are either incompatible with the Scag mower or adversely affect its operation, performance or durability. This warranty does not cover engines and electric starters, which are warranted separately by their manufacturer.

Scag Power Equipment reserves the right to change or improve the design of any accessory without assuming any obligation to modify any accessory previously manufactured.

All other implied warranties are limited in duration to the 90 day warranty period. Accordingly, any such implied warranties including merchantability, fitness for a particular purpose, or otherwise, are disclaimed in their entirety after the expiration of the appropriate ninety day warranty period. Scag's obligation under this warranty is strictly and exclusively limited to the repair or replacement of defective parts and Scag does not assume or authorize anyone to assume for them any other obligation. Some states do not allow limitations on how long an implied warranty lasts, so the above limitation may not apply to you.

Scag assumes no responsibility for incidental, consequential or other damages including, but not limited to, expense for gasoline, oil, expense of delivering the machine to an Authorized Scag Service Dealer and expense of returning it back to the owner, mechanic's travel time, telephone or telegram charges, rental of a like product during the time warranty repairs are being performed, travel, loss or damage to personal property, loss of revenue, loss of use of the mower, loss of time, or inconvenience. Some states do not allow the exclusion or limitation of incidental or consequential damages, so the above limitation or exclusion may not apply to you.

This warranty gives you specific legal rights, and you may also have other rights which vary from state to state.