

# SILENT NIGHT® USER'S MANUAL



## SILENT NIGHT ZEP-A-3 1 1 AIR CLEANER BREATHE WITH CONFIDENCE



Dust



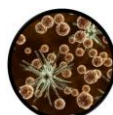
Mold Spores



Dander



Smoke



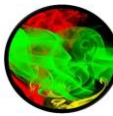
Allergens



Germs



Viruses



VOC's

**SILENT NIGHT ZEP-A-3 1 1**  
**800PUREAIR OF CALIFORNIA**

## Table of Contents



<b>Introduction</b>	Page 3
<b>General Safety</b>	Page 4
<b>Setup &amp; Operation</b>	Page 4, 5
<b>Specifications</b>	Page 5,6
<b>Biological Challenges</b>	Page 6
<b>4 Functional Stages</b>	Page 6
<b>Double ZEPA Filtration</b>	Page 7
<b>Our Inventor</b>	Page 7, 8
<b>Applications</b>	Page 8
<b>Warranty</b>	Page 8, 9
<b>Testimonials</b>	Page 9, 10
<b>Changing Filters</b>	Page 11
<b>Health Disclaimer</b>	Page 12



## Introduction To Silent Night®

Congratulations on your choice of the **Silent Night** fanless air purifier. Its technologies have been validated by leading university scientists, and reported in respected scientific journals. Inventor Stan Weinberg owns five patents on this remarkable **Silent Ion-Drive technology**.

The Silent Night ZEPA-311 is the biggest innovation in air purification. This is because it is the world's most effective particulate remover - while also being the quietest air purifier ever invented! And it does it all with an impressive 311 Clean Air Delivery Rate purifying up to 500 square feet.

The ZEPA-311 model uses an electrostatic force of negatively charged particles being attracted to positively charged particles to accelerate air and its pollutants through two charge-sensitive filters.

In April 2013, IBR, a lab certified by the Association of Household Appliance Manufacturers (AHAM) established Silent Night's official Clean Air Delivery Rate to be rated at 311 CADR or over 300 cubic feet per minute of air movement!

Testing has been done with worst case (hardest to capture) MPPS (most penetrating particle size) of .3 microns, which is used in the Centers for Disease Control and Prevention (CDC), Intertek and IBR.

Only Intertek and IBR are certified to do AHAM testing. The rules consider air flow, room size, distance from the appliance, time of operation, and the reduction of particles down to .1 microns in diameter. Some viruses and all bacteria fall in the ranges that are measured. We also find mold spores, pollen, pet dander, smoke particulate, and the byproduct of human habitation: house dust (80% of which is from human skin flakes).

Using a 13' x 16' bedroom with a 10' ceiling and a closed door (the AHAM test-room volume), Silent Night processes an air volume equal to that room size every 15 minutes (96 times per day). The machine is most effective in a closed room such as a bedroom, office, etc. More than one unit may be necessary in larger areas where new pollution is constantly added by life's activities.

Your ZEPA-311 is designed to run 24/7. You can Breathe with Confidence® knowing your Silent Night® will remove millions of airborne particles, dust, mold spores, dander, smoke, pollen, allergens, germs, viruses and volatile organic compounds (VOC's).

## General Safety

1. Do not open or disassemble. No user-serviceable parts inside. Do not push objects into any opening.
2. Not for outdoor use.
3. Do not spill liquids into your unit.
4. Use only the adapter provided. A substitute adapter may harm the unit and will void your warranty.
5. Operate 9 inches from any wall and not on or near metal surfaces.
6. Operating closer than 9 inches from your body can cause a harmless static discharge when you touch a grounded surface.
7. Operate within 2 feet from any computer equipment.
8. Extension cords are safe to use with your unit but be cautious, it can become a tripping hazard.

**ELECTRICAL SAFETY:** Electrical safety features are incorporated to prevent shock hazards. As to shock potential, the Department of Energy classifies static charge potential below 250 mJ (millijoules), the level of carpet static, carpet static, as safe for humans. ZEPA-311 is well below this level.

**MAINTANENCE:** Considering millions of micro-particles fall victim to Double ZEPA filtration, some can attach or if not cleaned, these particles can build up on the acceleration wires. Therefore, you may experience a crackling, hum or a buzz noise.

This is not a problem, and in some homes it never happens. But it is an indication your unit may need to be cleaned. So, if you hear a noise, simply turn off the power and rotate the unit up and down. Glass beads slide along the ionization wires and scrape away adhered particulate.

To clean your filters, remove the filters and vacuum from the outside of the back filter and then vacuum the back side of the front filter. Filter changes are recommended every six months. (see page 11)

As long as the blue light can be seen in a lighted room, your Silent Night is working properly.

**OZONE SENSITIVITY:** Your ZEPA-311 will emit negligible ozone. Its two ZEPA filters, treated with a catalyst agent, convert ozone to oxygen. The Silent Night air cleaner meets ozone safety standards in California, Canada, and around the world.

**Setup & Operation**

- 1. Review the General Safety instructions before operating your unit.
- 2. Insert supplied DC power jack into receptacle on the unit’s right side, with the power switch OFF (O).
- 3. Insert universal adapter prongs into AC outlet.
- 4. Electrostatic filters are pre-installed. Refer to page 11 “changing filters” to learn how to change filters.
- 5. On rocker switch press “|” for ON and “O” for OFF. When ON (|), you’ll observe a low intensity blue light inside the front grille.
- 6. Run 24/7 in areas that are occupied.
- 7. If you hear any noise that is coming from the unit, such as a crackling; it is likely due to the build-up on the wires. Simply turn your unit off, turn the unit upside down, and right side up 3 times. Turn power back on again.
- 8. Operating in a room with the doors closed and without a fan running will extend filter life. Smoking or wood fires will shorten the filter life.

**Did you hear a rattle in your shipping box?**  
No problem. Wire-cleaning beads slide up and down whenever the unit is inverted.

**Specifications**

Technology	Patented Fanless Ion-Drive Technology. An array of ionization wires and a high-output hexagonal cage engine generate high air flow with minimal power consumption
Electrical	24 Watts, universal adapter accepts 50V to 270V
Safety	Complies with safety standards
Universal Adapter	A 24v class two universal adapter assures no direct line voltage contact and auto shutdown in unsafe circumstances
CE Marked	This mark is the manufacturer's declaration that a product meets the requirements of all applicable European Economic Area directives
Case	Impact-resistant, flame-resistant to 400 degrees Fahrenheit, molded polycarbonate with a matte finish
Dimensions, Weight	14.5” Height x 12.5” Width x 6.5” Depth, 7 lbs.

<b>Coverage</b>	Air is near perfect at the machine. It mixes with room air based on distance and is exceptionally effective in closed rooms up to 500 sq. ft.
<b>Filters</b>	Two ZEPa-quality filters (front and back) with patented Surgical Anti-Viral Filter Technology
<b>Ozone Output</b>	Close to zero when level is controlled by factory-installed Catalyst Filters in the front and rear ports
<b>Noise</b>	Silent. Less than 0.2 decibels
<b>(RE) Range Extender</b>	Included with your unit is an RE antenna that essentially doubles the coverage to approximately 500 square feet. Requires no maintenance.
<b>Warranty</b>	Two year limited warranty (see page 8-9)
<b>Cleaning</b>	Special internal mechanism permits user-initiated cleaning via product inversion without opening the machine. Periodically remove the filters and vacuum through the front and back grilles also. See Page 11 for filter changes and maintenance.
<b>Applications</b>	Bedrooms, family living areas, offices or work stations, truck cabs, boats, motor homes, travel trailers, campers, etc.

## Biological Challenges

Biological challenges for your Silent Night ZEPa-311 include germs, viruses, bacteria, mold spores, dander, pollens, fumes, dust and smoke.

According to the Center for Disease Control (CDC), National Institute for Occupational Safety and Health (NIOSH), and aerosol scientists, if you can capture or eliminate the .3 micron ( $\mu$ ) test particles, you can capture and eliminate most airborne biological agents that are allergenic, toxic, or infective. ZEPa-311 is highly effective in any indoor pollution scenario.

**CDC/NIOSH Biological Germ Testing:** CDC/NIOSH test procedure on 42CFR84 on page 24 states, "By using aerosols of the most penetrating particle size range (MPPS: .3 microns), the efficiency level against all [biologicals] (germs) will meet or exceed the certified efficiency level." Therefore, because Silent Night will remove .3 micron particle size and smaller, it protects us from breathing particle types that are most harmful to our health.

## ZEPa-311's Four Functional Stages

1. Silent Night's ZEPa Filtration array begins with a pre-filter at the rear of the unit. **The pre-filter captures millions of particles per day.**
2. ZEPa-311's **Internal Fanless Engine** includes a wire array with a self-cleaning mechanism. By disconnecting the power and turning your unit upside down and right side up 3 times, the wires are swept clean. Any

3. The engine's 'accelerator stage' looks like a metallic cage. Overall, the engine is lightweight and highly efficient...drawing only 24 watts of power. Operating your purifier around the clock (recommended) costs no more than leaving a very small porch light on.
4. At the front of the unit is a second ZEPA electrostatic filter. This fanless system moves at least 300 cubic feet of air per minute. Independent lab tests prove the ZEPA-311 produces perfect or near-perfect air at .3 micron, 1 micron, and 5 micron test settings. **No other air technology can match this.**

### Silent Night's Double ZEPA® Filtration



**Why ZEPA Filtration?** *An average adult's lung surface area is the size of a tennis court, and normal breathing is 12 inhalations per minute—about 6 liters of air. **Every HOUR, we inhale 12.7 cubic feet of air (and its pollutants!)**. Children have smaller lungs but their breathing rate is much higher. It makes sense to have a PT-100 in every closed room where we or our loved ones spend a lot of time. Closer to the occupants, within practical limits, is best!*

**Whereas standard air cleaners must be run at their highest (noisiest) setting to produce top results, Silent Night's amazing fanless ion engine and Double ZEPA Filtration prove to capture nearly 100% of particulate and in total silence.**

Silent Night's inventor, Stan Weinberg, developed his first high-capture filter medium in response to the Bird Flu scare fifteen years ago. Now known as "ZEPA" for **ZEPHYR ELECTROSTATIC PARTICULATE ARRESTMENT**. After 40 inventions, Weinberg says the ZEPA-311 is the achievement of his lifetime.

**Here are a few reasons:**

- ☑ **The highest particulate capture efficiency with no fan.**
- ☑ **Silent operation.** (Fan-type units are loud and intrusive).
- ☑ **Super-low cost of operation.** Compared to a HEPA system, the ZEPA-311 pays for itself in energy savings every 2 years.
- ☑ **ZEPA-311 always operates at maximum performance providing the highest particulate efficiency.** No "low setting" is needed to reduce noise operating cost.

## Our Inventor

Weinberg developed the world's first wearable air purifier. Mini-Mate hangs around the neck and blows out ions that repel viruses, bacteria, dander, pollen, smoke, and other pollutants. This device received impressive international attention after being featured on Dateline NBC, CNN, the Oprah Winfrey Show, the Today Show, CBS News, and in many newspapers and magazines.



Millions of Weinberg's products have sold in America and around the world, especially throughout Asia, where bird flu and SARS heightened public and governmental awareness of airborne hazards. See this video featuring Stan Weinberg on Dateline NBC:

<http://weinproducts.com/media/quicktime/broadband/dateline2.mov>

## Applications

### Breathe with Confidence® in Bedrooms, Offices and More!

The human immune system faces up to 10,000 invasive challenges per day from bacteria, viruses, mold spores, allergens, dander, pollen, pet dander and more. **Statistically, adults do one-third of their breathing in each of two very important locations; their bedroom and their workplace.** Although most will use Silent Night for these applications, other living spaces may include family living areas, truck cabs, boats, motor homes, etc. **Your Silent Night ZEPA-311 substantially lowers the concentrations of all pollutant categories listed.**

## 2 Year Limited Warranty

- 800PureAir (Silent Night company) warrants this product to be free of defects in material or workmanship for a period of 2 years following the date of purchase within the U.S. or Canada.
- Products sold by U.S. or Canadian Reps and shipped to buyers in other countries will be covered, but the customer must pay shipping both ways.
- All instructions must be followed to avoid cancellation of warranty.
- If a product is covered, 800PureAir will repair or exchange the defective product or component for a new or remanufactured replacement.



## Warranty Continued

- 800PureAir will cover shipping of the repaired or replaced product to your U.S. or Canadian address.
- Products sold by foreign Reps or Affiliates in other countries are not covered. (Each country's warranty rules will apply.)
- If your model is no longer available, 800PureAir will replace it with the most similar product in its current inventory.
- You will be asked to provide [1] the purchase date, [2] your authorized retailer's name, and [3] one-way cost of shipping.
- Warranty does not cover problems from improper installation, misuse, abuse, neglect, unauthorized repair, accident, disassembly, shipping damage, or any cause not the responsibility of 800PureAir.
- Warranty does not apply to black market, used purchases, eBay purchases, purchases from surplus resellers, altered or modified units.
- Warranty is voided if the provided adapter is not used.

### Warranty Shipping Address:

**Factory Repair Center  
115 W. 25th Street  
Los Angeles, CA 90007  
(800) 787-3247**

## Testimonial Contributions

*"I developed a cough after I got a long haired cat and let it sleep on my bed. My doctor put me on an inhaler. I stopped using the inhaler two months ago once Silent Night was running full time. I'd been using it twice a day, but with your product in my bedroom the coughing stopped. Today, two months later, was my semi-annual appointment. The doc says I have no wheeze and my breathing is normal. This is only an anecdote, but I like your product and want to say so. And I still sleep with the cat."*

**- Karen Schwelling, Alabama**

*"Two days after our Silent Night was in my bedroom I no longer had the post nasal drip problem that has bothered me for years."*

**- Bill Krull, Texas**

## Testimonials Continued

*"I am an early fifties guy with asthma and sleep apnea. For years I have been sleeping with a CPAP mask (Continuous Positive Airway Pressure) over my face to keep me breathing through the night. Based on particle count testing I knew Silent Night reduced allergens and dust in my room by 90+% and would be good for anyone to breathe, especially asthmatics. But would it have a benefit through my CPAP mask? My CPAP air tested 77% cleaner when Silent Night was running. I have done test after test using 1-hour average results to be as accurate as possible. My 18-year old son calls it The Bomb; for us older people that translates to Wow!"*

**- Jim Dickerson, Virginia, pet food store owner**

*"I spent 20 years on the faculty of the University of Illinois at Urbana-Champaign. My academic areas of interest were Environmental Sciences and Natural Resources. I developed and taught 18 courses during my career. My main motivating factor during the span of that career was to change the world and make our environment better. After retiring I decided to focus my environmental work more at the individual level. Silent Night suits me perfectly."*

**- T.J. Jacob, Colorado**

*"Thank you again for this unit as I am enjoying the benefits of pure air during this flu season... I got my machine to be a test subject, but I want several more for the house. I wish you had this in the malls because people would go crazy knowing that they could help reduce the spread of germs in their homes! I'd rather have a Silent Night purifier over a flu shot or worse, the flu!!!"*

**- Mary Ann Hermansen, California**

## Changing Filters

### Filter-changing Steps

1. To remove or to insert the filters (Fig. 1), turn the power switch to OFF (O) and unplug the cord from the wall.
2. To remove, invert the unit and pull the *product name plate* away from the machine to break the Velcro attachment that holds the filter cavity; then pull out the filter. (See Fig. 2)
3. To insert a new filter, reverse this procedure while making sure the internal Velcro is tightly secured. (See Fig. 3)
4. Turn the unit around and repeat these same steps with the back filter.
5. Turn the power switch to the on to the ON position (I).



Fig. 1



Fig. 2



Fig. 3



**Double ZEPA Filtration:** *The pre-filter (at the back of the unit) is designed to keep the unit's interior clean, while the "finishing filter" (at the front of the unit) is designed to capture not only large particles, but more importantly, millions of .3 micron size and smaller - which are the most harmful to our health.*

**Filter Benefits and Life Expectancy:** ZEPA-311's filters protect the unit's interior and assure top performance. Six months of solid performance is normal. However, if you live in or near high particulate conditions, smoke, own pets, live near heavy pollen, near a freeway, or are remodeling, etc. your filter life will shorten. If you own a particle counter, you can test the capture efficiency and know exactly when your filters need changing.

## Health Disclaimer

The Silent Night ZEPA-311 is not a medical product and no claims are made or implied that it can prevent, mitigate, treat, or cure any human disease.

### The Benefits of Cleaner Air

To the extent cleaner air reduces the concentration of toxic, allergenic, and infective breathable particles...including germs, pollens, dust, and mold spores, it lowers the probability of inhaling critical levels (sometimes called trigger levels) of these airborne challenges.

*The expected number of cases among a given number of susceptible persons is proportional to the average concentration of infectious droplet nuclei in a room and the probability."*

– Dr. Janet M. Macher, *Governmental Industrial Hygienists (ACGIH)*. Quote from page 96, *Bio Aerosols Assessment and Control*, 1999.

