

# PROLINE

## Frost Free Fridge Freezer USER'S MANUAL

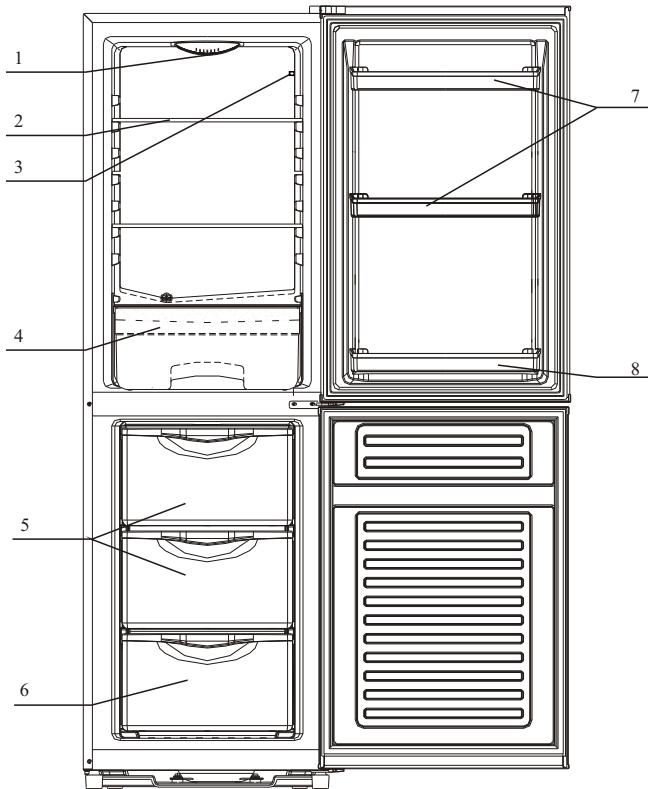


**PLC550FFSL-U**

**PLC550FFW-U**

PLEASE READ THE USER'S OPERATION MANUAL CAREFULLY BEFORE USING

# STRUCTURE ILLUSTRATION



1. Temperature control knob

2. Refrigerator shelf

3. Lamp switch

4. Crisper Drawer

5. Drawer C/D

6. Drawer B

7. Door rack

8. Bottle rack

Note : Compartment design may change due to product improvement, No prior notice will be given.

## THANK YOU FOR PURCHASING THIS PROLINE PRODUCT

This booklet contains the information you will require to install and operate your new appliance.

It is important and worthwhile spending time to fully read this booklet so you will understand how to operate the appliance safely and efficiently.

Please keep this booklet in a safe place so that you can refer to it when required.

### ELECTRICAL CONNECTION (UK ONLY)

For your safety please read the following information.

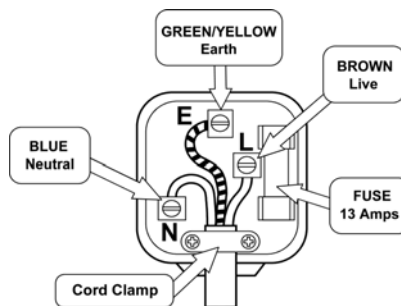
#### **Warning: This appliance must be earthed.**

The appliance must be connected to a 240 volts 50 cycle AC supply by means of a three pin socket, suitably earthed and should be protected by a 13 amp fuse in the plug. The appliance is supplied with a standard 13 amp 3-pin plug fitted with a 13-amp fuse. Should the fuse require replacement, it must be replaced with a fuse rated at 13 amp and approved to BS1362.

If the mains plug is unsuitable for the socket outlet in your home or is removed for any other reason, then the cut off plug should be disposed of safely, do not insert the cut off plug into a mains outlet to prevent the hazard of electric shock. Remove the fuse before disposal.

There is a danger of electric shock if the cut off plug is inserted into any 13-amp socket outlet.

#### **How to wire a 13 amp plug:**



#### **Important**

The wires in the mains lead on this appliance are colored in accordance with the following code:

Green and Yellow - Earth

Blue – Neutral

Brown – Live

As the colours may not correspond with the markings identifying the terminals in your plug proceed as follows.

The green and yellow wire must be connected to the terminal in the plug which is marked with the letter E or with the earth symbol  $\perp$  or colored green and yellow.

The blue wire must be connected to the terminal marked N.

The brown wire must be connected to the terminal marked L.

You must make sure the mains cord is firmly secured under the cord clamp.

## REFRIGERATOR SAFETY INFORMATION

Check that the voltage marked on the rating plate matches that of your local supply. Failure to use the correct voltage will render the guarantee VOID and may cause damage to the appliance.

The manufacturer accepts NO responsibility for using any other voltage than that marked on the rating plate.

This appliance is intended for domestic use only; any other use may invalidate the warranty and might be dangerous.

This appliance is intended for indoor use only, do not use or store outdoors. This appliance shall not be exposed to rain.

The mains plug shall be the main disconnect device and shall remain operable at all times. A short power-supply cord is provided to reduce the risk of a tripping hazard.

To disconnect from the mains completely, turn the appliance OFF, then remove the plug from wall outlet.

Do not immerse the appliance, its lead or plug in water or any other liquid.

Remove all food and unplug from the supply when not in use and before cleaning the appliance.

If the mains lead becomes damaged, it must be replaced by the manufacturer, its service agent or similarly qualified person with a specially prepared lead of the same type and rating to avoid a hazard.

Do not operate the appliance with a damaged cord or plug or after the appliance malfunctions or has been damaged in any way.

Do not let cord hang over edge of the surface, or touch hot surfaces.

Do not place the appliance on or near hot surfaces, or in direct sunlight.

Children must be supervised to make sure they do not swing on the door.

Accessible surfaces may get hot when in use, use handles and knobs at all times.

Always attach a plug to the appliance, and then plug it into the wall outlet and switch on.

If you are discarding an old appliance with a lock or catch fitted to the door, ensure that it is left in a disabled condition to avoid the entrapment of young children when playing.

As old refrigeration appliances may contain CFC's which will damage the ozone layer, when disposing of any refrigeration appliance please contact your local waste disposal department for advice on the correct method of disposal.

This appliance is not intended for use by persons (including children) with reduced physical, sensory or mental capabilities, or lack of experience and knowledge, unless they have been given supervision or instruction concerning use of the appliance by a person responsible for their safety.

Children should be supervised to ensure that they do not play on or near the appliance.

This appliance is for refrigerating food and making ice cubes.

### **REFRIGERANT**

The refrigerating gas contained in the circuit of this appliance is Isobutane (R600a); it causes a low level of pollution but is inflammable.

### **CAUTION:**

Extreme caution must be used when moving the appliance.

### **WARNINGS:**

**Do not damage the refrigerant circuit.**

**Do not use sharp or pointed objects such as knives to remove ice when defrosting.**

**Do not use mechanical devices or other means to accelerate the defrosting process, other than those recommended by the manufacturer.**

**Do not use electrical appliances inside the food storage compartments of the appliance, unless they are of the type recommended by the manufacturer.**

**If the appliance is installed in a carpeted area, do not let the carpet block the ventilation holes in the base of the unit, adjust the levelling feet after a few hours to compensate for carpet movement.**

**Keep ventilation openings, in the appliance enclosure or the built in structure clear of obstructions.**

### **Installation**

Position the appliance and allow to stand for two to three hours before it is turned on for the first time to allow the system to settle. Do not position next to any heat source e.g. cooker, boiler or in direct sunlight etc.

A clearance of 10 cm must be left between the sides of the appliance and any adjacent cabinets or walls to allow for adequate air circulation. The appliance is not designed for recessed installation ("building in").

Install on a good firm level surface, and any unevenness of the floor should be corrected prior to installation, slight unevenness can be overcome by adjusting the front feet.

Do not keep your appliance in a room where the temperature is likely to fall below 16 degrees C (61 degrees F) at night and/or especially in winter, as it is designed to operate in ambient temperatures between +16 and +32 degrees C (61 and 90 degrees F). At lower temperatures the appliance may not operate, resulting in a reduction in the storage life of the food.

Do not place the appliance near cookers or radiators or in direct sunlight, as this will cause extra strain on the appliance's functions.

If installed next to a source of heat such as a fridge, maintain the following minimum clearances.

Choose a well-ventilated location with no less than 10cm clearance around the refrigerator. Place the refrigerator in a location with a firm base in order to prevent vibration and excessive noise.

Level the refrigerator by adjusting the two front feet.

## **Instructions for use**

Remove all packing materials and wash the interior of the appliance using lukewarm water containing a little bicarbonate of soda in the proportion of 1 teaspoon to 1.2 liters (2 pints) of water. Do not use detergents or soaps as they may taint the food. After cleaning, dry all parts thoroughly.

## **Temperature Control**

The refrigerator is designed to maintain an internal storage temperature in the refrigerator compartment between 0°C to + 8°C.

To enable adjustment of the temperature in the appliance it is fitted with an adjustable thermostat located in the fridge compartment, which can be adjusted from setting 1 (warmest) to 7 (coldest). For normal working temperature it is recommended to adjust the thermostat control to the midway position, after a few hours readjust the thermostat to the desired temperature. There is also an off position "0". Which turns OFF the refrigerator and freezer compartments. Please Note this does not disconnect the appliance from the mains supply. To do this you must remove the mains plug from the socket.

To obtain a lower internal temperature turn the thermostat temperature control to a higher number. To obtain a higher internal temperature turn the thermostat control to a lower number. However, the internal temperature and temperature control setting is dependent on a number of factors:

1. Varying ambient temperatures.
2. The number of times the appliance doors are opened and how long the doors remain open.
3. The amount and temperature of the food and drink introduced into the appliance.
4. The weather conditions and time of year e.g. summer / winter.
5. The positioning of the appliance and an adequate air circulation to the sides and back of the cabinet.

Never place hot or warm foods into the cabinet or leave the doors open for longer than necessary as this will raise the temperature and cause excessive amounts of moisture thus increasing the amount of ice in the refrigerator / freezer compartment.

## **The Internal Light**

The internal light will automatically switch ON and OFF whenever the refrigerator door is opened or closed. To change the light bulb, please see the chapter on changing the light bulb.

### **Storage of fresh food in the refrigerator**

Food should always be covered tightly with foil, plastic film, placed in bags or stored in airtight containers. This will prevent food from dehydrating and prevent the strong smell of some foods transferring to milder ones.

To store raw meat wrap in polythene bags or airtight containers and place on the lowest shelf.

Do not allow raw meat to come into contact with cooked foods. For safety, only store raw meat for two or three days. Fruit and vegetables should be thoroughly cleaned and placed in the vegetable/ salad bin.

Milk and other liquids should be sealed with lids and placed in the bottle shelf on the door.

### **Store frozen food**

When using the freezer for the first time or after defrosting, turn the thermostat temperature control to setting 7 for at least two hours before introducing the food to be stored, Then adjust to your preferred setting.

All frozen food products you purchase should be placed in the freezer as soon as possible to avoid the frozen food from defrosting.

Storage recommendations printed on the packaging of frozen food by the manufactures should always be followed.

### **Freezing fresh food (Freezer)**

Ensure that your freezing operations are carried out under the most hygienic conditions, as freezing alone does not sterilise the food. Never put hot or even warm foodstuffs into the freezer. Prior to storing the food, pack it in plastic bags, aluminium foil or freezer containers and place into the freezer without putting them in contact with food that has already been frozen. See the technical data sheet at the rear of this booklet for the maximum permissible amount in kilograms of fresh food that can be frozen in any 24 hour period with a room temperature of 25C Never freeze more than the maximum permissible amount of food as shown in the technical data at the end of this instruction book.

### **Making ice cubes**

Pour water into the ice cube tray until it is two thirds full and place into the freezer. Ice cubes will form in approximately 2 to 3 hours. The ice cube can be easily removed by twisting the ice cube tray or running under cold water for a short time.

## Refrigerator defrost process

The refrigerator defrosting process is carried out automatically every time the compressor stops.

The defrost water drains from the cabinet into a tray placed on the top of the compressor to the rear of the unit where it evaporates.

## Freezer defrost process

**This Freezer is frost-free and does not need defrosting.**

**Warning: The refrigerating system must not be damaged at any time.**

## Cleaning and maintenance

Before any cleaning or maintenance is carried out you must disconnect the appliance from the mains supply by removing the plug, never remove the plug by pulling on the mains cord. Remove the plug by pulling on the plug itself.

It is recommended that when cleaning the appliance, both the inside and outside, can be cleaned using warm water and a little bicarbonate of soda. Use 1 teaspoon to 1.2 litres of water.

If the appliance is not to be used for a long period of time then it is recommended to remove all the food stuff, clean the inside of the appliance and leave the door open to allow the air to circulate thus avoiding unpleasant odors.

## Changing the light bulb

**Note.** Light bulbs are not covered by the warranty

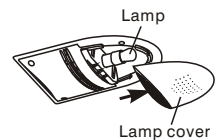
Disconnect the appliance from the mains supply.

Pull the lamp cover forwards, to gain access to the lamp holder. Unscrew the light bulb in an anti clockwise direction from the holder.

Replace the bulb with one of the correct type and size (10 watt SES E14 base).

Replace the cover by Pushing the cover Backwards along the grooves.

Reconnect the appliance to the mains supply.



## Power Failure

If there is a power failure for a short time less than 11 hrs keep the door closed

Frozen food should not be affected if the failure lasts for more than 11 hrs.

Extra protection can be given by covering the appliance with two or three thick blankets.

If a long power failure is anticipated, try to get the foodstuff into another appliance or cold store, if possible.

If the power cut is longer than 11 hrs then check the content of the freezer.

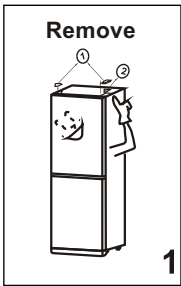
If the food has defrosted, cook and refreeze the food or it should be eaten immediately.

Never refreeze food that has been defrosted.

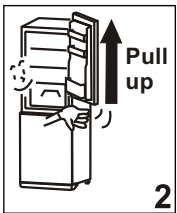


## Reversing the doors

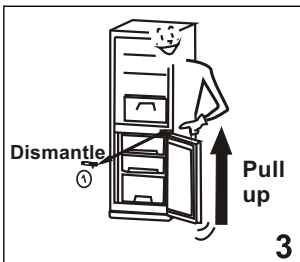
The doors are able to be reversed on this model.



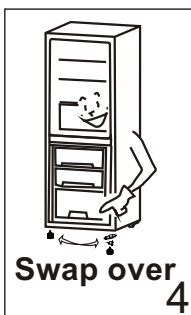
- Remove the hinge cover (1) and the top hinge (2).



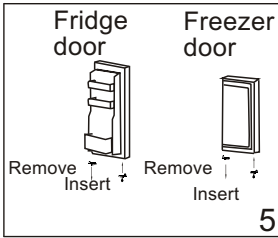
- Lift the refrigerator door upwards to disengage it from the middle hinge. Put the door to one side, laying it down gently on a padded surface.



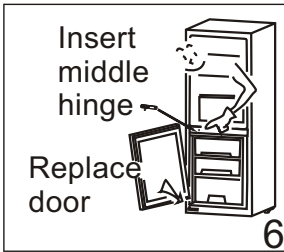
- Using a screwdriver, dismantle the middle hinge.
- Lift the freezer door upwards to disengage it from the lower hinge. Put the door to one side, laying it down gently on a padded surface.



- Swap over the position of the lower hinge and the adjustable leg to the other side of the cabinet.



- Remove the hinge pin that is in the bottom of the fridge and freezer door.
- On the other side of the fridge and freezer door, insert the replacement hinge pin that is supplied with the appliance.



- Place the freezer door on the lower hinge, making sure that the hinge pin is inserted in the hole in the bottom of the freezer door.
- Put the middle hinge back on the cabinet, making sure that it is on the opposite side from its original position.



- Place the fridge door on the middle hinge, making sure that the hinge pin is inserted in the hole in the bottom of the fridge door.
- Shut the door and then replace the top hinge. Ensure that the top hinge pin is inserted in the hole at the top of the fridge door.
- Replace the hinge covers.

Important: please ensure the doors are aligned horizontally and vertically and the seals are closed on all sides before finally tightening the hinges.

If necessary, re-adjust the leveling feet.

### **If the appliance is not operating correctly:**

Please check the following points.

Is there a power failure? (Check by turning on a house light)

Has the fuse blown or has the circuit breaker tripped.

Has the door been closed correctly?

Check the thermostat has been set correctly.

Check the mains plug is seated in the wall socket correctly and the socket switch is on.

Check the power outlet is working, Try another appliance.

Is the room temperature too cold or too hot. ( working temperature range 16°C to 32°C )

### **Prolonged off periods**

If the refrigerator is not in use for a long period of time, proceed as follows:

Disconnect the refrigerator from the main supply by removing the plug from the socket.

Clean and dry the inside as instructed under the heading of cleaning the appliance.

Leave the door open to prevent any unpleasant smells from building up while the appliance is not in use.

If there is a power failure for a short time keep the door closed check the contents of the refrigerator every so often.

### **Before calling for service**

Please check the following points:

1. The refrigerator is not working

Check the plug is inserted correctly into the wall socket

Check there is power to the wall socket by plugging in another appliance, if the other appliance works, check the fuse in the appliance plug.

2. The refrigerator is noisy when running

Check the appliance is level and is not in contact with another appliance or kitchen furniture.

3. The refrigerator does not cool sufficiently.

If the door has been opened too often, or it has been left open for a while it will take time for the appliance to reach its set temperature.

Check the air flow around the refrigerator has not been reduced due to insufficient clearance.

NOTE: The following characteristics should not be looked upon as a problem.

A gentle tricking sound caused by coolant flowing through the pipe.

Compressor operating at high temperature.

## **Do's and don'ts**

**Do-** keep raw meat and poultry below cooked food and dairy products.

**Do-** Leave lettuce, cabbage, parsley and cauliflower on the stem.

**Do-** Wrap cheese firstly in greaseproof paper and then in a polythene bag, excluding As much air as possible. For best results, take out of the fridge compartment an hour before eating.

**Do-** Wrap raw meat and poultry loosely in polythene or aluminium foil. This prevents drying.

**Do-** Wrap fish and offal in polythene bags.

**Do-** Wrap food with a strong odour or which may dry out, in polythene bags, or aluminium foil or place in airtight container.

**Do-** Wrap bread well to keep it fresh.

**Do-** Chill white wines, beer, lager and mineral water before serving.

**Do-** Check contents of the low temp compartment every so often.

**Do-** Keep food for as short a time as possible and adhere to best before and Use by etc. dates.

**Do-** Store commercially prepared food in accordance with the instructions given on the packets.

**Do-** Always choose high quality fresh food and be sure it is thoroughly clean before Storing it.

**Do-** Wrap all food in aluminium foil or food quality polythene bags and make sure any air is excluded.

**Do-** Keep ventilation openings, in the appliance enclosure clear of obstruction.

**Do-** ensure that frozen food does not rise in temperature while defrosting, a rise in temperature during defrosting may shorten the storage life of your food.

**Don't-** Cover the shelves with any protective materials which may obstruct air circulation.

**Don't-** Store poisonous or any dangerous substances in your fridge. It has been designed for the storage of edible foodstuffs only.

**Don't-** Consume food which has been refrigerated for an excessive length of time.

**Don't-** Store cooked and fresh food together in the same container. They should be packaged and stored separately.

**Don't-** Let defrosting food or food juices drip onto already stored food.

**Don't-** leave the door open for long periods, as this will make the appliance more costly to run and cause excessive ice formation.

**Don't-** Use sharp edged objects such as knives or forks to remove the ice.

**Don't-** Never use hairdryers, or electrical appliances for defrosting only use item recommended by the manufacturer.

**Don't-** put hot food into the appliance. Let it cool down first.

**Don't-** put liquid-filled bottles or sealed cans containing carbonated liquids into the freezer section, as they may burst.

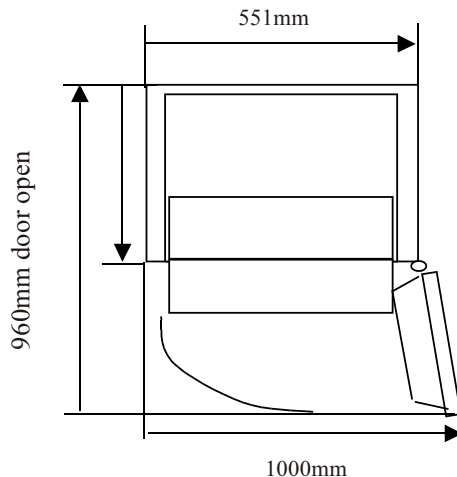
**Don't-** Give children ice cream and water ices direct from the freezer section. The low temperature may cause 'freezer burns' on the lips.

**Don't-** Try to keep frozen food which has thawed; it should be eaten within 24 hours or cooked and refrozen.

**Don't-** Damage the refrigerant circuit at any time

# Technical data

Brand	<b>PROLINE</b>
Appliance Type	<b>Frost-Free Fridge-Freezer</b>
Star Rating	<b>* ** *</b>
Frequency ( Hz )	50 Hz
Light Power (Watts)	10W
Net Freezer Volume	90L
Net Refrigerator Volume	122L
Freezing Capacity (kg/24h)	3.0kg/24h
Rated Voltage ( V )	220-240V~
Climate Class +Ambient Range	N
Gross Weight (Kg)	67Kg
Energy Consumption (kWh/24h)	0.79kWh/24h
Energy Consumption (kwh/ year)	288kwh/ year
Input Power (Watts)	88W
Defrost Power	145W
Refrigerant /Amount	R600a/53g
Product Dimensions (W x D x H)	551×629×1610mm
Insulation Blowing Gas	<b>Cyclopentane</b>



## IMPORTANT DISPOSAL INSTRUCTIONS



**As a responsible retailer we care about the environment.**

As such we urge you to follow the correct disposal procedure for your product and packaging materials. This will help conserve natural resources and ensure that it is recycled in a manner that protects health and the environment.

You must dispose of this product and its packaging according to local laws and regulations.

Because this product contains electronic components, the product and its accessories must be disposed of separately from household waste when the product reaches its end of life.

Contact your local authority to learn about disposal and recycling.

The product should be taken to your local collection point for recycling. Some collection points accept products free of charge.

### **If something doesn't seem to work**

If there is something about your appliance which you do not understand and you live in the UK, you can phone our help line during normal office hours on: 0844 8009595

**Calls are charged at standard rates.**

We apologise for any inconvenience caused by minor inconsistencies in these instructions, which may occur as a result of product improvement and development.

**Kesa Electricals UK, HU1 3AU 26 / 07/2010**