

ElkGuardTM

**Self-Contained
Wireless Security System**



Owner's Manual

THIS MANUAL IS PROVIDED TO ACQUAINT YOU WITH THE OPERATION OF THE SYSTEM AND HELP YOU BECOME PROFICIENT WITH IT'S OPERATION. ALL USERS SHOULD READ AND FOLLOW THE INSTRUCTIONS AND CAUTIONS IN THIS MANUAL. FAILURE TO DO SO COULD RESULT IN THE SYSTEM NOT WORKING PROPERLY. KEEP THIS MANUAL IN AN EASY TO ACCESS LOCATION. READ AND FOLLOW THESE INSTRUCTIONS CAREFULLY. IF YOU DO NOT UNDERSTAND ANY PORTION OF THIS MANUAL OR IF YOU HAVE ANY QUESTIONS ABOUT YOUR SYSTEM, CONTACT THE INSTALLING COMPANY FOR ASSISTANCE.

System Notes

Installation Company: _____

Address: _____ Phone Number: _____

City: _____ St: _____ Zip: _____

Central Monitoring Station: _____ Acct. # or ID _____

PLEASE BE AWARE OF THE FOLLOWING:

The level of security obtained is directly related to two major factors.

1. The placement of the main unit and the quantity and placement of any additional sensors that are a part of this system.
2. The knowledge and operating skills that you have of the system, including but not limited to the weekly testing of the complete system.

Important notes when preparing a security/safety plan for your home or business:

1. This system is an electronic device and is subject to failure or malfunction. You should not rely on it as your single source of security.
2. This system will operate on AC Power OR Internal Battery power, however it will not work without any power.
3. This system should be tested weekly.
4. Audible warning devices must be loud enough to provide adequate notification of an alarm event.
5. Only qualified security professionals should install and maintain this system.

FCC STATEMENT:

THIS DEVICE COMPLIES WITH PART 15 OF THE FCC RULES. OPERATION IS SUBJECT TO THE FOLLOWING TWO CONDITIONS: (1) THIS DEVICE MAY NOT CAUSE HARMFUL INTERFERENCE, AND (2) THIS DEVICE MUST ACCEPT ANY INTERFERENCE RECEIVED, INCLUDING INTERFERENCE THAT MAY CAUSE UNDESIRE OPERATION.

NOTE: THE MANUFACTURER IS NOT RESPONSIBLE FOR ANY RADIO OR TV INTERFERENCE CAUSED BY UNAUTHORIZED MODIFICATIONS TO THIS EQUIPMENT. SUCH MODIFICATIONS COULD VOID THE USER'S AUTHORITY TO OPERATE THE EQUIPMENT.

This equipment generates and uses radio frequency energy and if not installed and used properly, that is, in strict accordance with the manufacturer's instructions, may cause Interference to radio and television reception. It has been type tested. However, there is no guarantee that interference will not occur in a particular installation. If this equipment does cause interference to radio or television reception, which can be determined by turning the equipment off and on, the user is encouraged to try to correct the interference by one or more of the following measures:

- If using an indoor antenna, have a quality outdoor antenna installed.
- Reorient the receiving antenna until interference is induced or eliminated.
- Move the receiver away from the security control.
- Move the antenna leads away from any wire runs to the security control
- Have the device or controller plugged into a different outlet so that it and the receiver are on different branch circuits.

If necessary, the user should consult the dealer or an experienced radio/television technician for additional suggestions. The user or installer may find a booklet titled "Interference Handbook" prepared by the Federal Communications Commission helpful. This booklet is available from the U.S. Government Printing Office, Washington, DC 20402. The user shall not make any changes or modifications to the equipment unless authorized by the Installation Instructions or Users Manual. Unauthorized changes or modifications could void the user's authority to operate the equipment.

ElkGuard Wireless Alarm System with GSM Communicator FCC ID: O2K-106058
Contains GSM/GPRS Modem Transmitter Module FCC ID: MIVGSM0108
Wireless Mini Door & Window Switch Transmitter (RR1) FCC ID: O2K-106064
Wireless Universal Transmitter w/ext input & Vib analyser (RR2) FCC ID: O2K-106065
Wireless 4 Button Keyfob Transmitter (RK4) FCC ID: O2K-106068
Wireless 3 Button Keyfob Transmitter (RK3) FCC ID: O2K-MK304
Wireless 1 Button Bracelet / Neckless Panic Transmitter (RK1) FCC ID: O2K-106050
Wireless Emergency Button Transmitter (RPB) FCC ID: O2K-106054
Wireless Door Bell Button Transmitter (RDB) FCC ID: O2K-106056
Wireless PIR with Pet Immunity (R15PET) FCC ID: O2K-106051
Wireless PIR - Non Pet Immune (R15) FCC ID: O2K-SP1R304
Swivel Mounting Bracket for Wireless PIR FCC ID: N/A

WARNING

Installation and maintenance shall be performed by qualified service personnel only.

CAUTION

Risk of explosion if battery is replaced by an incorrect type.
Dispose of used batteries according to the instructions on the battery.

Contact your local ElkGuard Dealer for all service.
For assistance in locating an ElkGuard Dealer in your area contact:

Elk Products Inc.
PO Box 100
Hildebran, NC 28637



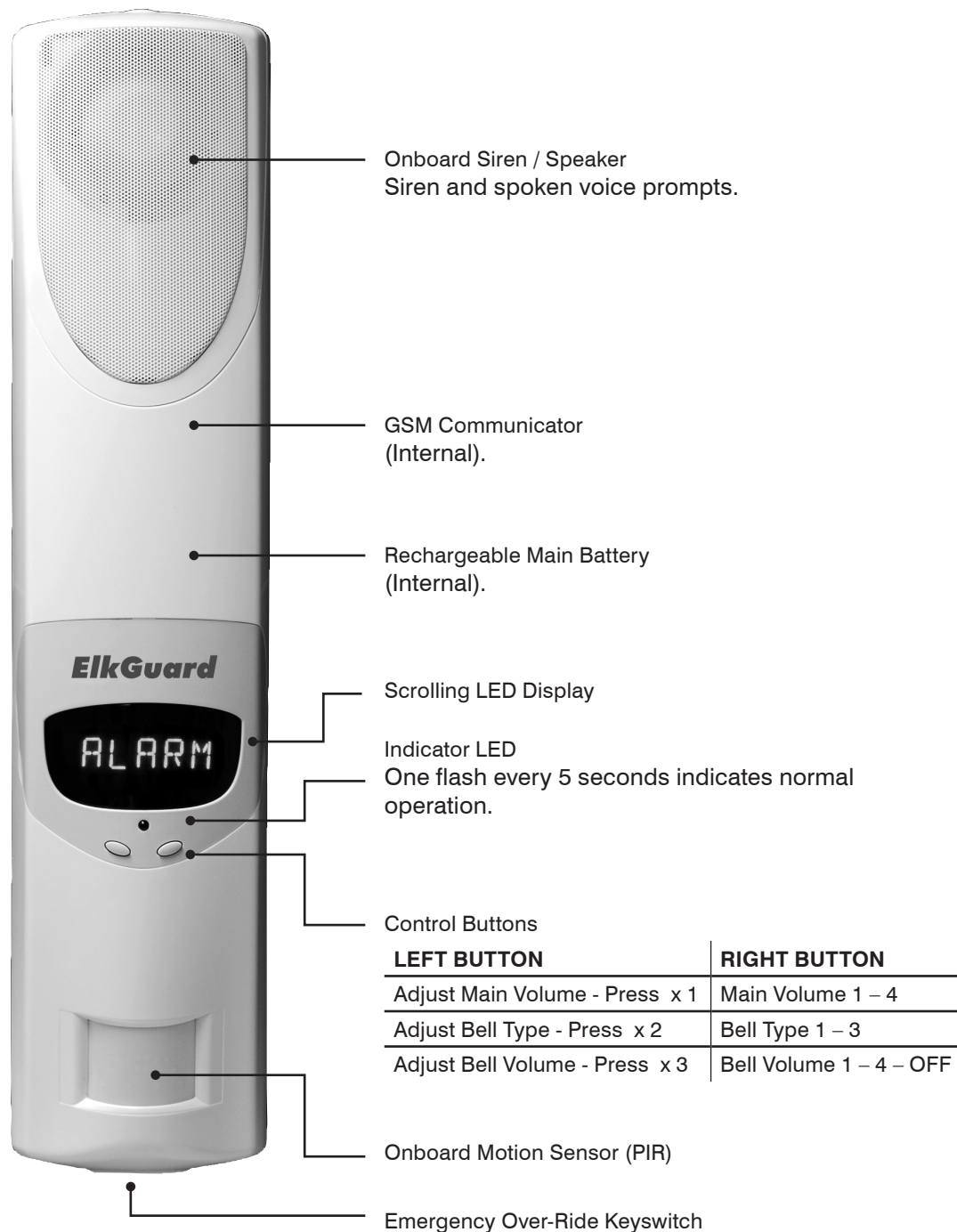
ElkGuard Main Unit

Congratulations on selecting ELKGUARD.

Your ELKGUARD with its "speak easy" technology is a revolutionary, radio based, state-of-the-art alarm system which has been built to the highest standards of industrial design and manufacturing.

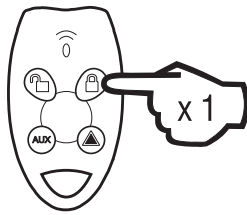
The many sophisticated and innovative design features of the ELKGUARD make the system highly secure as well as being easy to use.

This Owner's Manual will help you identify the various parts of your ELKGUARD system and give you an overview of Operation and functions.



Operation

ARM

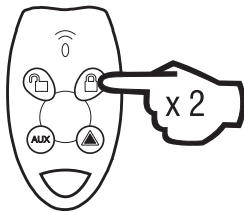


 **BUTTON**
Press once.

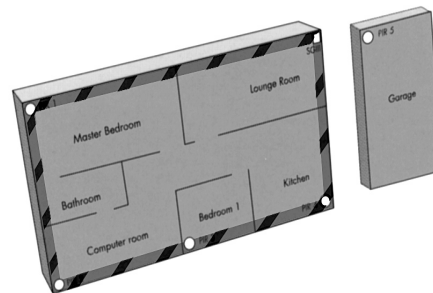


System is fully armed

STAY (IF ENABLED)

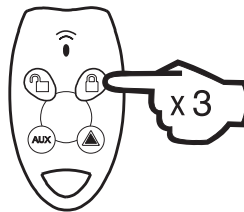


 **BUTTON**
Press twice.

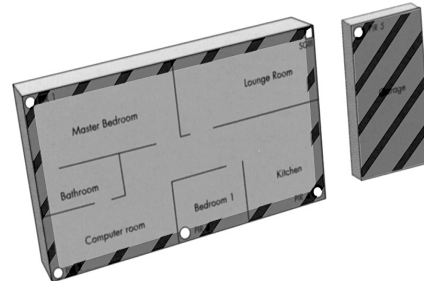


System is partially armed

STAY2 (IF ENABLED)

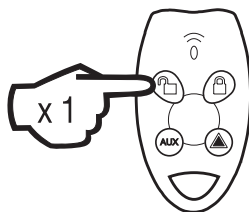


 **BUTTON**
Press three times.

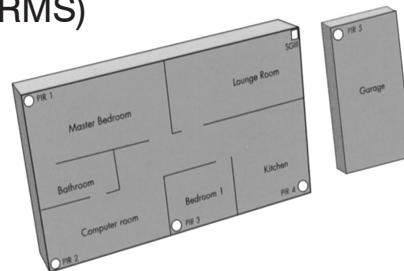


System is partially armed


DISARM (OR TO RESET ALARMS)



 **BUTTON**
Press once.



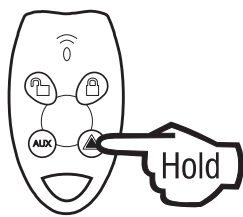
System is disarmed

In these examples, Armed areas are shown shaded 

Disarmed areas are shown unshaded.

Operation

PANIC ALARM



BUTTON
Press & hold for
4 seconds.

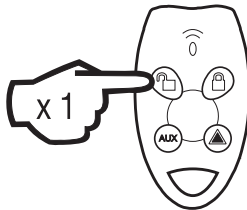


**GSM
Communicator**



**Central
Monitoring
Station**

CLEARING DISPLAYS



BUTTON
Press once.

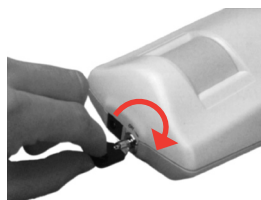


To clear any display, press the Disarm button. To recall the display, press Disarm again (unless the display has been reset by arming and disarming.)

EMERGENCY OVER-RIDE KEY



**ELKGUARD
POWER OFF**
Turn the key counter
clockwise.



**ELKGUARD
POWER ON**
Turn the key clockwise.

Only to be used if your wireless Key-fobs are lost. Insert over-ride key and turn counter-clockwise to disable the ElkGuard. (Store these over-ride keys in a safe, hidden place).

Main Unit Battery



LOW MAIN BATTERY (AC Powered Systems)

If the ElkGuard has a permanent connection to AC power, a low battery condition may indicate that your ElkGuard needs servicing. Contact your ElkGuard installer.



LOW MAIN BATTERY (Battery Powered Systems)

If the ElkGuard is not run off a permanent connection to AC power, the main battery should provide approximately 3 or more month's operation before it must be recharged.

Whenever the "Low Main Battery" message is displayed, it indicates that it is time to charge the main battery.

Plug the charger into a 110V AC power outlet and plug the charging connector into the ElkGuard for 24 hours.



Connect the charger for 24 hours.
The red Indicator LED will be on while charging.

Important: Each time ElkGuard is plugged into the AC charger a 24 hr fast charge cycle is begun. The unit automatically drops back to a maintenance or "trickle" charge after 24 hrs. However, repeated plugging or unplugging of the AC charger without sufficient time for the battery charge to be depleted may cause damage to the battery by overcharging it. For this reason, please do not connect the AC charger until the unit indicates a Low Main Battery OR unless the unit has operated on battery only for at least several weeks.

GSM Cellular Communicator



GSM Communicator
(Internal).

The ElkGuard has an onboard GSM communicator which communicates with your central monitoring station using the GSM Cellular Telephone Network.

The communicator is setup and programmed by your installer at the time of installation. It does not need any maintenance, but should be tested when you perform your regular system test.


The communicator needs an active GSM SIM card to operate.


Keyfob (RK4)





OPERATION

RK4 Keyfobs have four buttons for operating your ElkGuard.

Press the  button to Disarm the system or to silence alarms.

Press the  button to Arm the system or press twice for HOME mode (if enabled on your system.)

Press the  button to sound the Panic alarm.

Press the  button for auxiliary functions as programmed by your installer.



* Example device number

BATTERY REPLACEMENT

Your RK4 Keyfobsadio Keys are sealed units with an expected battery life of 10 years. Low battery warning might indicate a battery fault or the battery has been depleted by continuous presses. Contact your ElkGuard dealer for advice.

Motion Sensors (PIR)



OPERATION

The R15 'Pet Immune' and R15 standard PIR motion sensors can be added to the system to provide protection in additional rooms.

Maximum detection range is 50ft.



Leave the room.



Wait 5 minutes.



Red light indicates motion sensed.

BATTERY SAVING TIMER

The PIRs have a unique battery saving feature which means you must wait 5 minutes between activations.

To test a PIR, leave the room for at least 5 minutes and then re-enter. The red light in the PIR will flash to indicate that it has sensed your motion into the room. If you don't see the red light you may not have waited long enough - try again.



* Example device number

BATTERY REPLACEMENT

The R15 PIRs use an Ultralife U9VL 9V battery.



Unsnap cover at the bottom.



Remove the cover.



Insert the new battery. Ultralife U9VL 9V battery

R15

The R15 battery is inside the sensor. Carefully lift off the sensor's cover by unsnapping at the bottom using a flat-bladed screwdriver or blunt knife.

Insert a new Ultralife U9VL 9V battery and then test the sensor.

Radio Reed Switch (RR1)



OPERATION

Radio Reed Switches can be installed on windows and doors to detect opening.



* Example device number



Open here.



Slide battery out.



Positive (+)
side up.

Insert the new battery. CR2477
3V Lithium battery.

BATTERY REPLACEMENT

Carefully lift off the reed switch cover by unsnapping at the bottom using a flat-bladed screwdriver or blunt knife.

A warning sound will be heard when opening the case - this is normal.

Insert a new CR2477 3V Lithium battery and then test the reed switch.

The new battery must be inserted in the battery clip with the positive (+) side up.

Universal Transmitter (RR2)

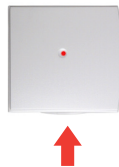


OPERATION

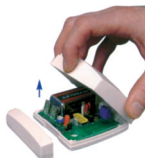
Universal Transmitters can be used as window and door switches (same as the Radio Reed Switch) or as a transmitter for other devices as arranged by your installer.



* Example device number



Open here.



Remove the cover.



Insert the new battery.
Ultralife U9VL
9V battery

BATTERY REPLACEMENT

Carefully lift off the Universal Transmitter cover by unsnapping at the bottom using a flat-bladed screwdriver or blunt knife.

A warning sound will be heard when opening the case - this is normal.

Insert a new Ultralife U9VL 9V battery and then test the transmitter.

Radio Door Bell (RDB)



OPERATION

Press the Door Bell button to sound the sound the door chime at the ElkGuard main unit.



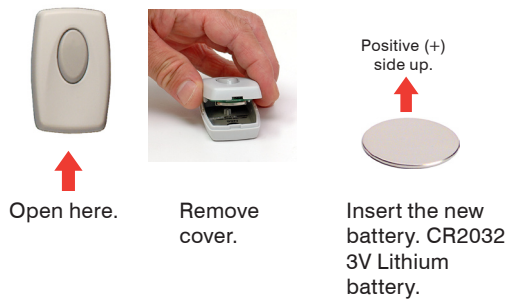
* Example device number

BATTERY REPLACEMENT

Carefully lift off the RDB Door Bell unit's cover by unsnapping at the bottom using a flat-bladed screwdriver or blunt knife.

Insert a new CR2032 3V Lithium battery and then test the sensor.

The new battery must be inserted in the battery clip with the positive (+) side up.



Radio Panic Button (RPB)



OPERATION

Press the red Panic button to sound the Panic alarm. (As programmed by your installer.)



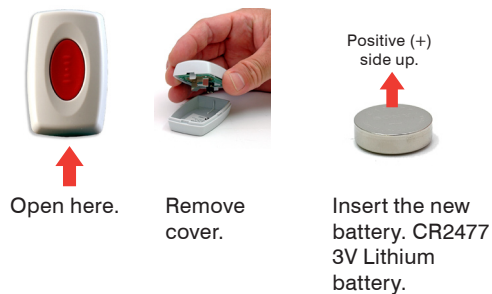
* Example device number

BATTERY REPLACEMENT

Carefully lift off the Panic Button's cover by unsnapping at the bottom using a flat-bladed screwdriver or blunt knife.

Insert a new CR2477 3V Lithium battery and then test the sensor.

The new battery must be inserted in the battery clip with the positive (+) side up.



Battery Specifications

ELKGUARD BATTERY SPECIFICATIONS

PART #	MODEL	BATTERY
106058	ELKGUARD MAIN UNIT	Elk1233 12V 3Ah Sealed Lead Acid Battery
106068	RK4 Keyfob - 4 button	Sealed housing, not user serviceable
106050	RK1 Radio Panic Pendant	Sealed housing, not user serviceable
106051	R15 'Pet' PIR Motion Sensor	Ultralife U9VL 9V battery
106062	R15 PIR Motion Sensor	Ultralife U9VL 9V battery
106054	RPB Radio Panic Button	CR2477 3V Lithium battery
106064	RR1 Radio Reed Switch	CR2477 3V Lithium battery
106065	RR2 Universal Transmitter	Ultralife U9VL 9V battery
106056	RDB Radio Door Bell	CR2032 3V Lithium battery

Transmitter Specifications

TRANSMITTER SPECIFICATIONS (ALL MODELS)

MODULATION	100% AM (On Off Keyed)
FREQUENCY	303.85 Mhz
POWER	< 10uW

ELKGUARD OWNER'S MANUAL

Revision Oct 2007

COPYRIGHT NOTICE

All rights reserved. No part of this publication may be reproduced, transmitted or stored in a retrieval system in any form or by any means, electronic, mechanical, photocopying, recording, or otherwise, without the prior written permission of Elk Products.

Elk reserves the right to make changes to features and specifications at any time without prior notification in the interest of ongoing product development and improvement.

© 2007 Elk Products, Inc.