

ZACUTO **EVF**

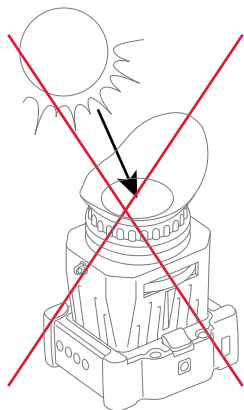


USER MANUAL

MODEL: 1-EVF-1S
1-EVF-1F



Precautions and Care



- Do not allow sunlight to enter the Z-Finder while it is attached to the EVF. The light can be magnified by the lens and potentially cause damage to the EVF screen.

- Do not use batteries, power cords, or accessories that are not specified for use with this product. Use only canon LP-E6 batteries or equivalent. Check Zacuto.com/zfinderevf for complete list of compatible accessories.
- When using a power cord, be sure to plug it in completely. Do not handle power plugs when your hands are wet. When unplugging the power cord, grasp the plug body or adapter instead of the cord.
- Do not disassemble or modify the EVF, as this may damage the product.
- Do not store the product in a dusty, humid or hot environment as damage may occur.
- When the product is mounted on a camera, do not lift or move the camera by grabbing the product. This may cause damage to the product or the camera mount.
- This product is not waterproof. If the product is dropped in water, do not turn on the unit. Contact Zacuto for service.
- Do not apply cleaning fluid or liquid directly to the screen. Apply cleaner to the included cloth or a soft cotton cloth before wiping screen.
- Do not apply excess pressure to the screen while cleaning or otherwise.
- Misuse of this product by the owner may void the warranty.

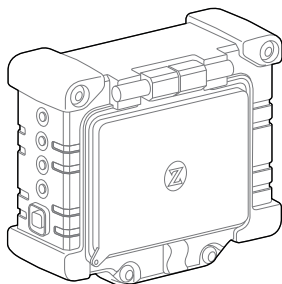
Table of Contents



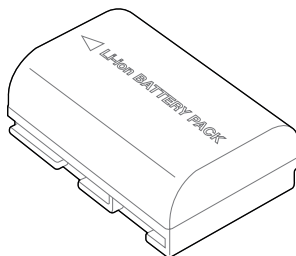
Precautions and Care	01
Table of Contents	02
Included Components	03
Optional Accessories	04
Physical Features	05
EVF Controls	05
Connecting the EVF to your camera	06
Connecting the EVF to an external monitor	06
Attaching the Hot-Shoe Mount	07
Adjusting the Hot-Shoe Mount	08
Using a rechargeable power source	09
Using an external power source	10
Attaching a Z-Finder	11
Operating The Menus	12
Brightness	13
Contrast	13
Chroma	13
Color Bars	14
Blue Only	14
Monochrome	14
Battery Level	14
Scaling	15
Frame Lines	16
Anamorphic	17
Focus Assist (Peaking)	17
Exposure Assist (Zebra)	18
False Color	18
Image Flip	19
Pixel to Pixel (Zoom)	20
Assigned Function Buttons	20
Audio Meters	21
Update	21
Possible Error Messages	22
Specifications	23
Limited Warranty	24



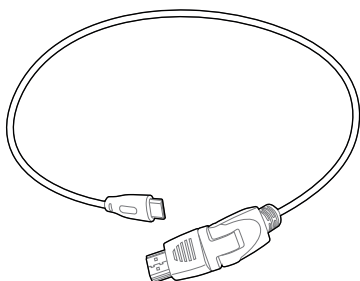
Included Components



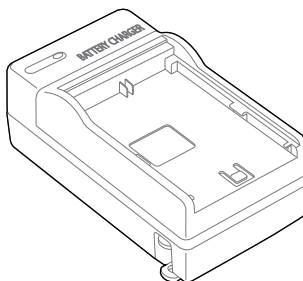
1 Zacuto EVF Unit w/ Dust Cover



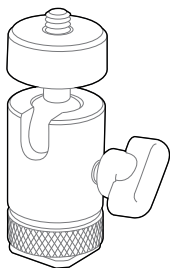
2 Li-ion Battery Pack



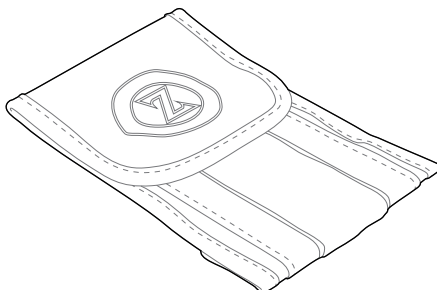
3 18" HDMI to HDMI Mini Cable



4 Li-ion Battery Charger



5 1/4"-20 Hot-Shoe Mount

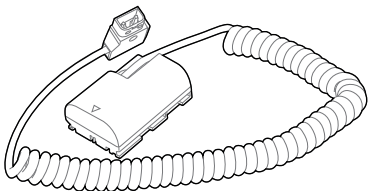


6 Zacuto Protective Carrying Pouch

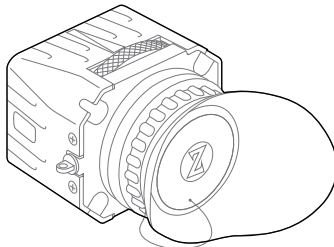
Optional Accessories



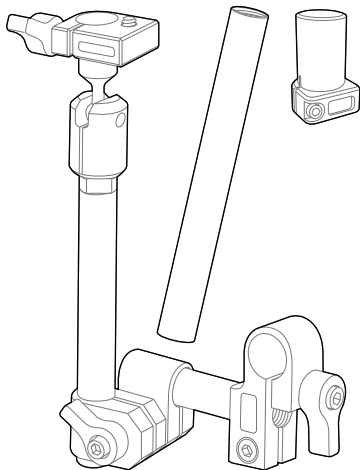
* These optional accessories may be purchased from the Zacuto web store at www.Zacuto.com or from any Zacuto authorized dealer.



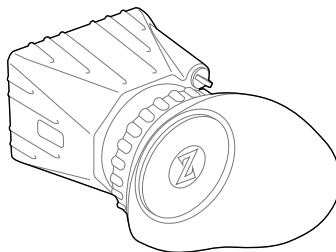
* External Battery Attachment with D-Tap



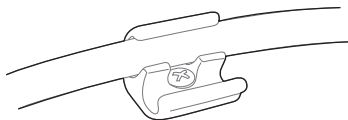
* Zacuto Z-Finder Pro (Standard with Z-Finder EVF Pro)



* Zacuto Tri-Mount System with Zud and additional 8" rod



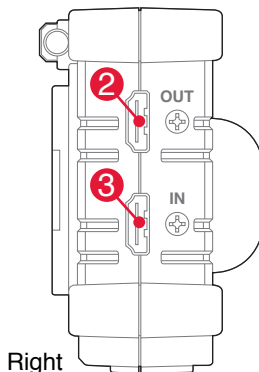
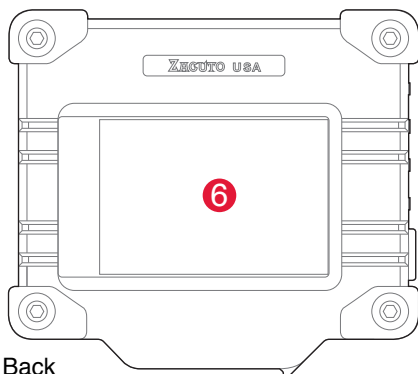
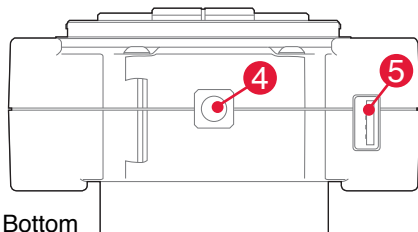
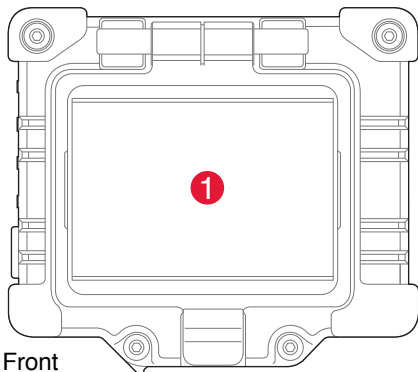
* Zacuto Z-Finder Jr. (Standard w/ Z-Finder EVF)



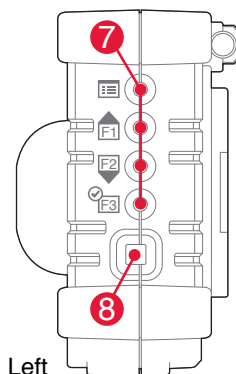
* Zacuto cable stay monitor attachments

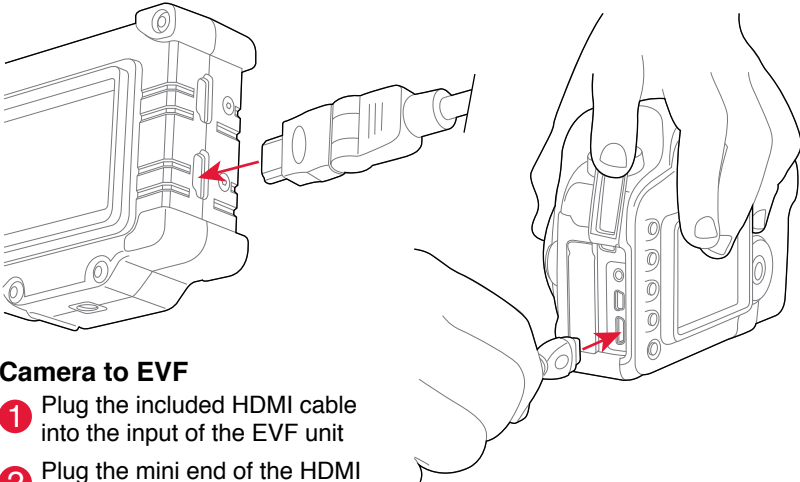


EVF Controls



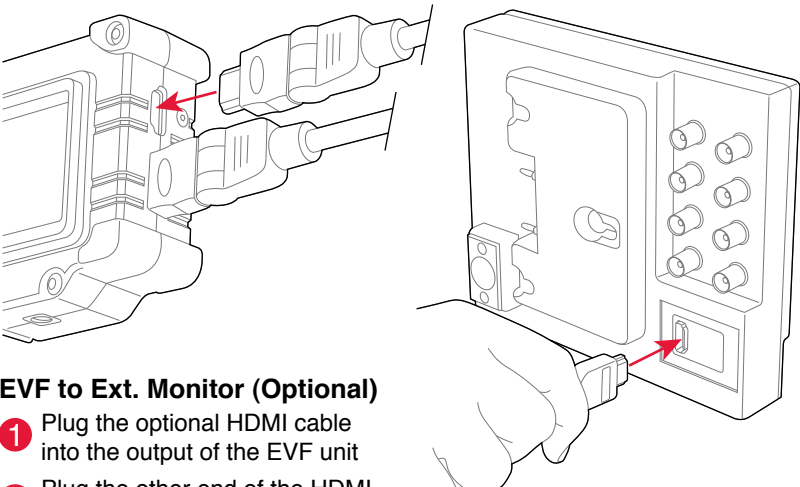
- 1 HD LCD Screen
- 2 HDMI Out
- 3 HDMI In
- 4 1/4"-20 Screw Hole
- 5 USB Port
- 6 Battery
- 7 Function Buttons
- 8 Power Button





Camera to EVF

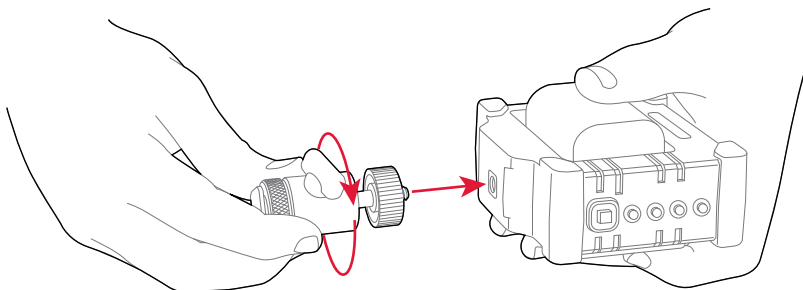
- 1 Plug the included HDMI cable into the input of the EVF unit
- 2 Plug the mini end of the HDMI cable into your camera



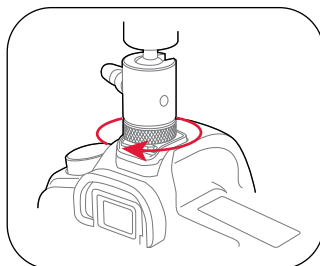
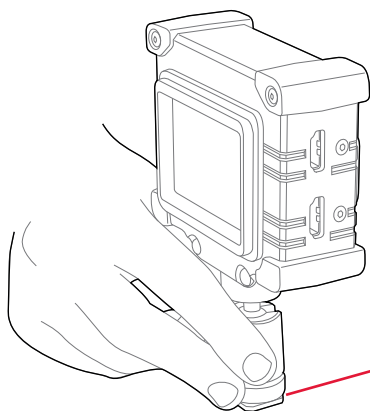
EVF to Ext. Monitor (Optional)

- 1 Plug the optional HDMI cable into the output of the EVF unit
- 2 Plug the other end of the HDMI cable into your external monitor

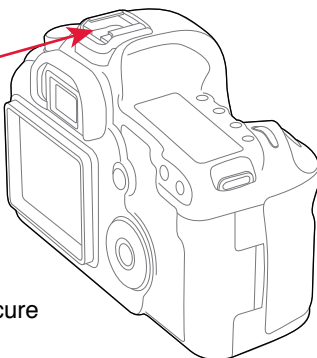
Attaching the Hot-Shoe Mount



- 1 Screw the Hot-Shoe Mount into the bottom of the EVF unit



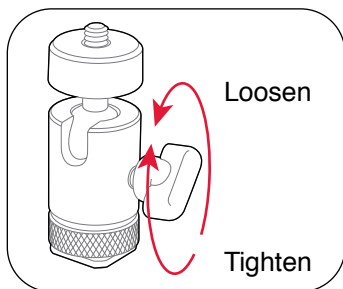
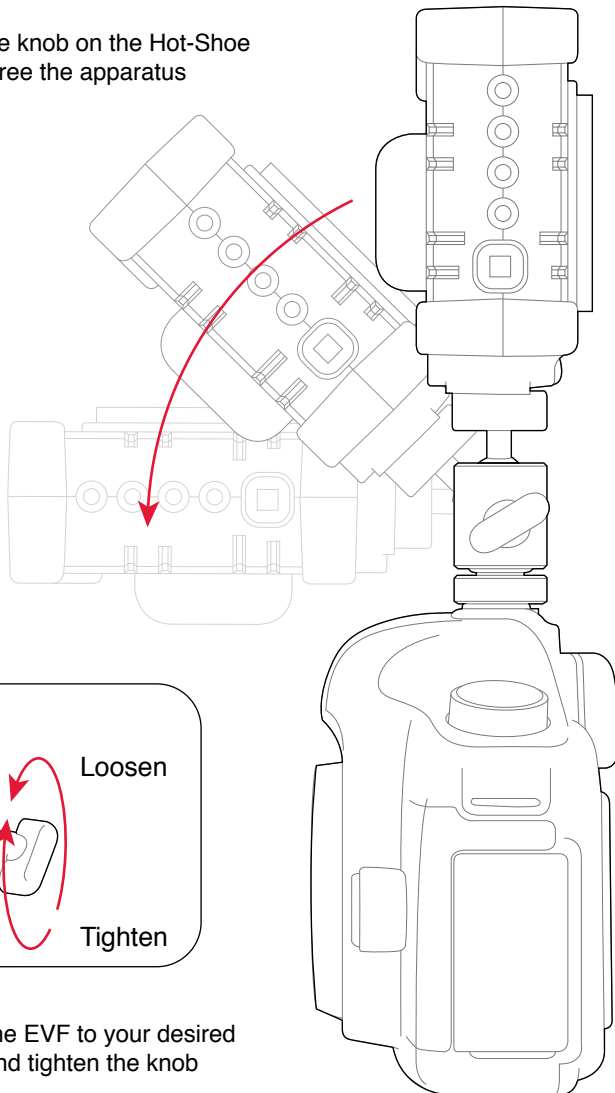
- 2 Slide the mount into your camera's hot-shoe
- 3 Tighten the knurled knob to secure the mount in the hot-shoe



Adjusting the Hot-Shoe Mount

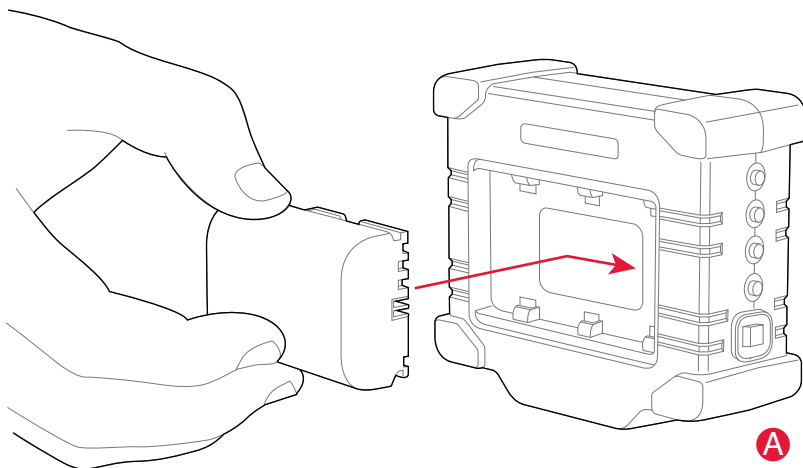


- 1 Loosen the knob on the Hot-Shoe Mount to free the apparatus



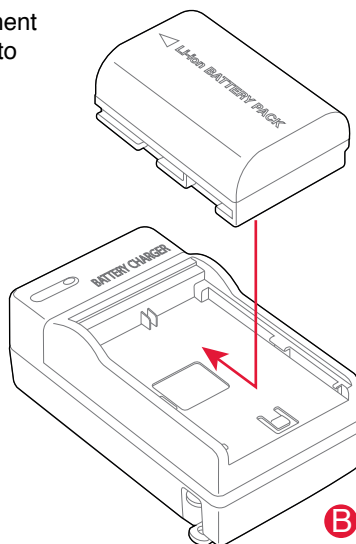
- 2 Position the EVF to your desired position and tighten the knob

Using the Included Battery

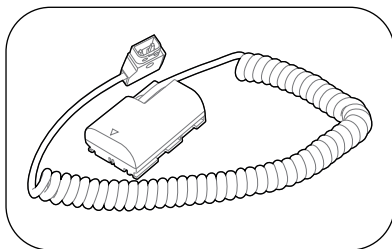


- A** Insert the battery into the compartment on the back of the EVF and slide it to the right to lock
- B** When battery power is depleted, slide the battery into the included charger

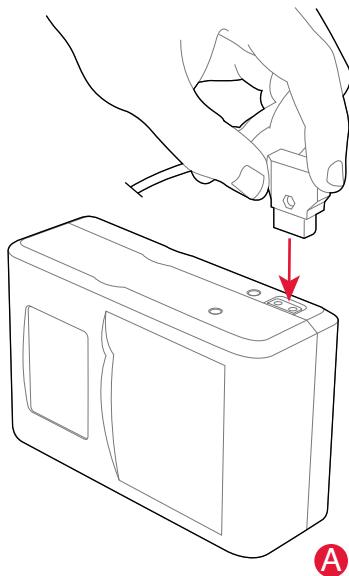
★ Note: Only use LP-E6 type batteries with the EVF unit. Doing otherwise may damage the unit and cause a malfunction.



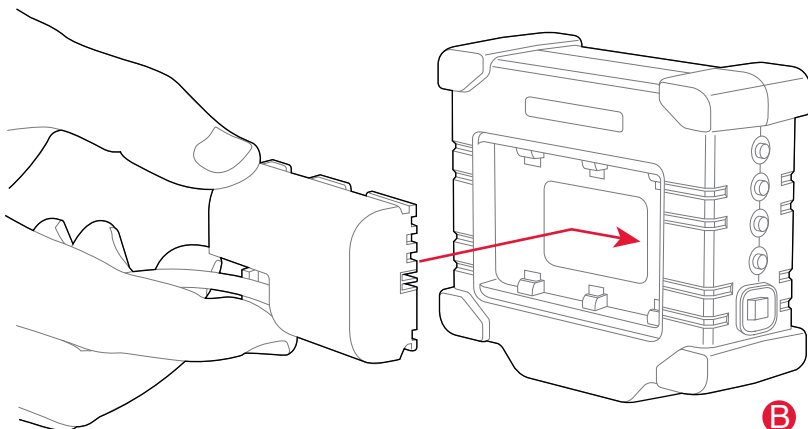
Using an External Power Source



- ✖ Optional equipment required
- External Battery Attachment with D-Tap
 - Compatible battery source

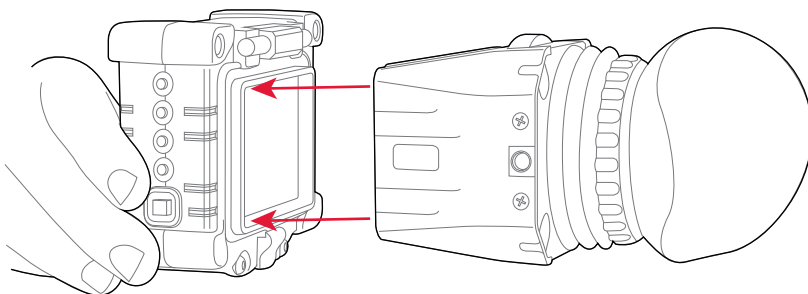


- A** Insert the male D-Tap end into a compatible power source
- B** Slide the battery adapter into the back of the EVF unit





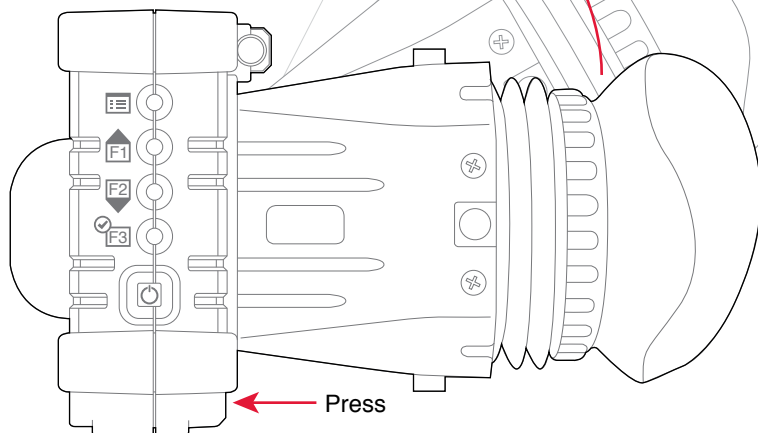
Attaching a Z-Finder



A Align the Z-Finder to the EVF unit and snap onto frame

B If using an EVF Flip, the Z-Finder may be flipped up and out of the way by releasing the red lever near the bottom of the unit

★ See Z-Finder instructions for complete installation and operation.



Operating the Menus



✳ The menu screen reveals itself over the current video display to show real-time updates of changes made.

1 Menu Button

- Display home menu screen
- Return to top menu at any point from within the menu tree

2 Selection Button - UP (F1)

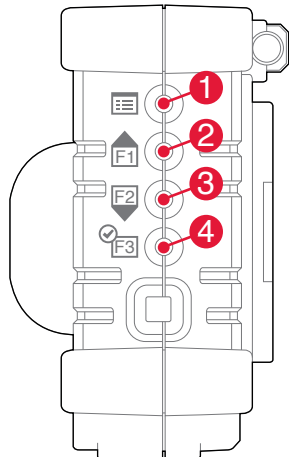
- Navigate up within menu
- Activate the function assigned to F1

3 Selection Button - DOWN (F2)

- Navigate down within menu
- Activate the function assigned to F2

4 Selection Button - CONFIRM (F3)

- Select the current highlighted option
- Activate the function assigned to F3



Menus

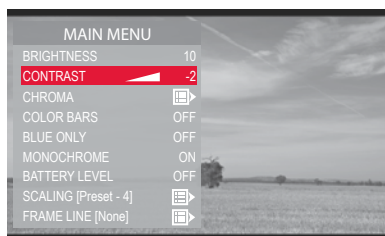
Brightness

- Press the select button to reveal the brightness scale
- Use the up and down buttons to modify the current value



Contrast

- Press the select button to reveal the contrast scale
- Use the up and down buttons to modify the current value



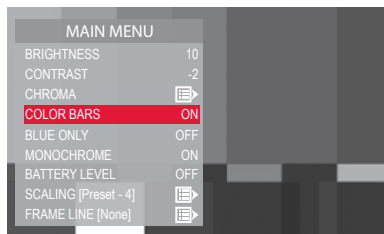
Chroma

- Press the select button to enter the CHROMA menu
- Select a parameter and modify each value with the up and down buttons. Zero (0) is the factory preset and can be modified + or -
- Select SATURATION to modify the overall amount of color in the image
- Select the RED, GREEN or BLUE options to modify the amount of color in each individual channel



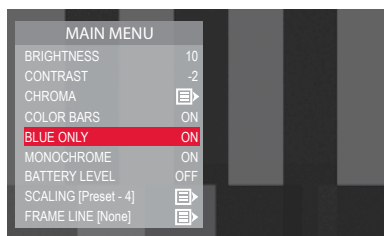
Color Bars

- Press the select button to toggle this setting ON or OFF
- The color bars may be used to check the calibration of the EVF



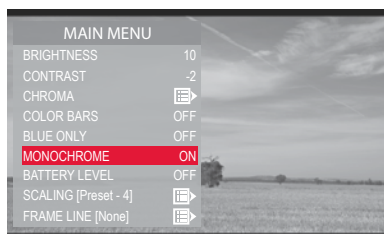
Blue Only

- Press the select button to toggle this setting ON or OFF
- Use this setting to obtain proper calibration of your monitor when using color bars



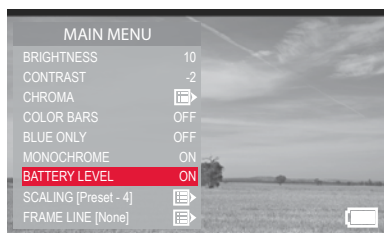
Monochrome

- Press the select button to toggle this setting ON or OFF
- Use this setting to obtain proper calibration of the EVF when using color bars



Battery Level

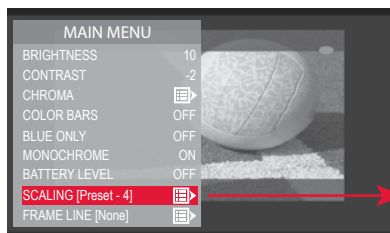
- Toggle this setting ON to constantly display the battery meter on the screen
- If turned OFF, the low battery icon will appear when a battery change is necessary



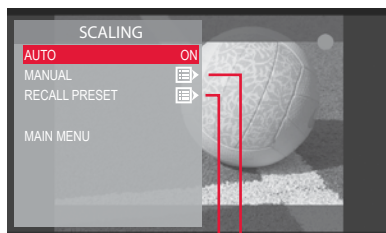
Menus

Scaling (See tutorial video at Zacuto.com/zfinderevf)

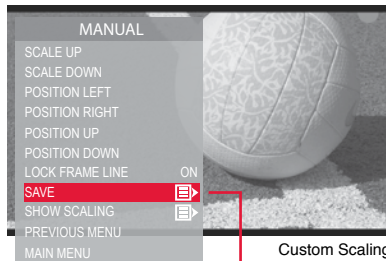
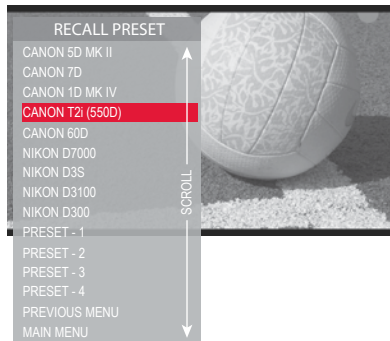
- Choose AUTO to allow the EVF to scale and format the image by automatically detecting the camera output
- Choose MANUAL to change the image size to fit the screen as desired
- Scaling while in 480p must be set for both standby and record modes



Non-scaled 5D image



Auto Scaling



Custom Scaling



- Choose RECALL PRESET to access a previously stored setting or to activate one of the included camera presets
- Choose SHOW SCALING to display the current settings

- Choose LOCK FRAME LINE to either lock or unlock the frame lines to the image when being scaled. This feature is only necessary when employing frame lines.
- When frame lines are needed, first choose the desired frame line. Second, scale (size) the image to match the frame lines. Next, toggle LOCK FRAME LINE to ON. Now continue scaling (sizing) the locked image and frame lines to the desired size.

Frame Lines

- Choose the frame lines that you wish to display on screen
- Within each selection you are able to toggle On or OFF the frame lines and/or action safe.

✳ Manual scaling is necessary to match the frame lines to the image



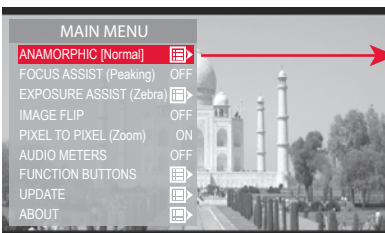
4:3 Frame Lines with Action Safe



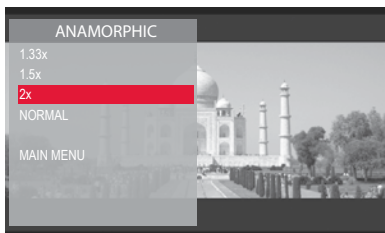
Menus

Anamorphic

- Choose the correct anamorphic setting for your lens from the list



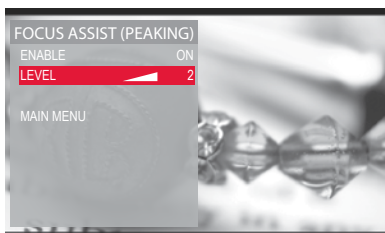
Uncorrected



Corrected

Focus Assist (Peaking)

- Press the select button to enter the peaking menu
- Toggle ENABLE ON or OFF by selecting it from the menu
- Select the LEVEL option and use the arrows to choose the peaking intensity



Peaking OFF

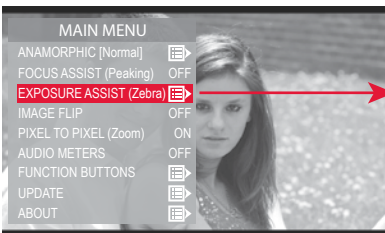


Peaking ON

- The EVF uses a sharpening method to enhance hard edges to aid in focusing the image. When an object is in focus the edges will be intensified.

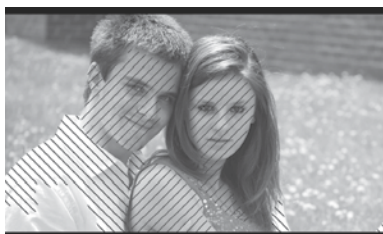
Exposure Assist (Zebra)

- Choose “Enable” to turn on the exposure assist feature
- Choose the zebra detection IRE value appropriate for your needs



- ZEBRA DETECT 1 lines will be the first to appear when the exposure reaches the specified IRE value

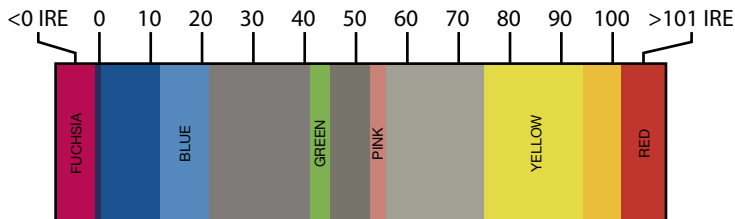
✖ **Note:** A value below 1 or above 109 disables that zebra



Exposure Assist ON

False Color

- Use False Color to aid in obtaining the correct exposure of your scene. Use the chart below as a key to determine which areas are over-exposed, underexposed, or exposed properly.



Menus



Overexposed: Objects will be displayed RED



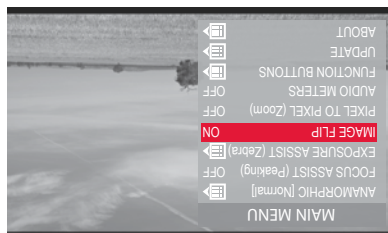
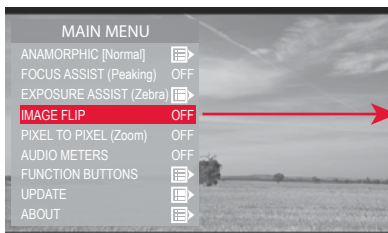
Properly Exposed: Objects will display in PINKS and GREENS



Underexposed: Objects will display BLUE to DARK BLUE

Image Flip

- Press the select button to toggle the image flip ON or OFF
- Use if mounting the EVF upside down

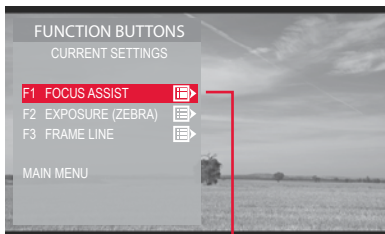
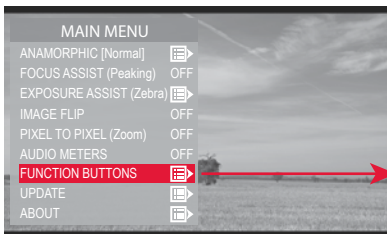


Pixel To Pixel (Pixel to Pixel not active while in 480p)

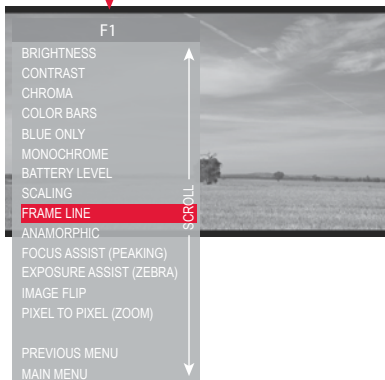
- Press the select button to toggle Pixel To Pixel ON or OFF



Assigned Function Buttons



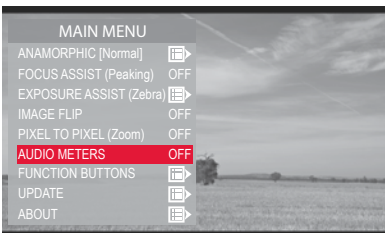
- Enter the menu to reveal the current button settings
- To change the function assigned to each button, first select the button you wish to change from the list
- From the subsequent menu, choose the desired function and select it. It can now be activated by pressing the appropriate function button on the side of the EVF unit without the use of the menu system.



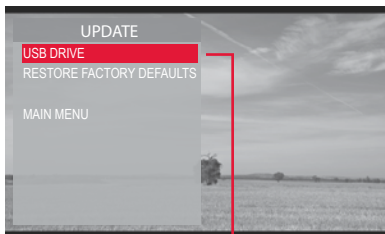
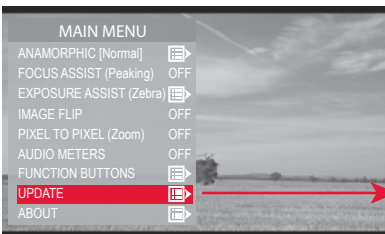
Menus

Audio Meters

- Press the select button to toggle the Audio Meters ON or OFF



Update (For more information visit Zacuto.com/zfinder-evf)



- Format your USB thumb drive to FAT32 for compatibility
- Download the firmware update from zacuto.com, click on the PRODUCTS tab and choose EVF FIRMWARE UPDATE. Once downloaded, drag the file onto your thumb drive
- Insert the thumb drive into your EVF, select UPDATE from the menu and select USB DRIVE. Choose START UPDATE. The current firmware version may be confirmed in the ABOUT menu
- Factory settings may be restored with RESTORE FACTORY DEFAULTS



Possible Error Messages

- ✱ You may receive these messages if there is a critical error during the update process. Contact Zacuto customer support if your problem persists after following these recommendations.

Problem: Invalid USB Drive

Your USB drive has been detected but the EVF cannot recognize it

Solution:

Remove the drive and re-insert or attempt to use a different USB drive that has been properly formatted



Problem: No USB Drive Detected

Your USB drive cannot be detected by the EVF

Solution:

Check if the USB drive is completely inserted and/or attempt to use a different USB drive that has been properly formatted



Problem: No Valid Image Detected

An invalid firmware image has been detected on your USB

Solution:

Your image has been corrupted. Try downloading the image again and retry. Use a different USB drive if the action continues to fail.





Specifications

LCD

Size	3.2" TFT LCD IPS LED
Resolution	800x480
Color	16.7 Million
Viewing Angle	H: 170 Degrees V: 170 Degrees
View Area	70.6mm (H) x 42.76mm (V)

POWER

Battery	7.2v Canon LP-E6 or Equivalent
External	12 Volt Power Adapter (Optional)
Consumption	2.5W (5.2 Hours w/ 1800mAH Battery)

VIDEO INPUT / OUTPUT

HDMI	480i / 480p / 576p / 720p / 1080i
------	-----------------------------------

TEMPERATURES

Operating	-4F to +158F / -20C to +70C
Storage	-22F to +176F / -30C to +80C

All LCD panels have dead pixel or dots if you look with a magnifier. With our EVF both situations apply. When the Z-Finder is on the EVF screen, we are magnifying so dead pixels become more noticeable and with the EVF up we are not magnifying so dead pixels or dots are un-noticeable.

Our policy is:

Without Magnification: 0 dead white pixels and 0 dead Red, Green or Blue dots visible with the naked eye.

With 2.5x or 3x Magnification: No more than 2 dead white pixels outside the critical middle third or 5 dead Red, Green or Blue dots.



Limited Warranty

Zacuto USA electronic devices come with a limited one year hardware warranty. The limited hardware warranty covers defects in workmanship and materials of our products for up to one year. This warranty does not cover any damage to this product that results from improper installation, accidents, abuse, misuse, negligence, natural disaster, insufficient or excessive electrical supply (if applies), abnormal mechanical or environmental conditions, dust or any unauthorized disassembly, repair or modification.

For the most up to date manual, features, firmware and tutorial videos go to the Zacuto EVF page at Zacuto.com/zfinderevf

Zacuto USA, Z-Finder and Z-Finder EVF are trademarks of
Zacuto USA



www.zacuto.com