

IP management with guaranteed cost savings

Within the data center world there has been spoken for years about Data Center Infrastructure Management (DCIM) systems that have to create insight in the infrastructure. An important element of this is the ability to manage the physical network layer.

The MIIM™ Advanced Physical Layer Management monitoring system by Molex Premise Networks is a unique system that actually reduces costs by providing insight, overview and management of the physical network layer. MIIM is not expensive, it is universal (standard RJ45), provides insight in the complete cable infrastructure including equipment from anywhere around the world, has an open software platform that can be generally integrated and is applicable to both existing and new networks. As a result, the average Return on Investment (ROI) is below 2 years.



MIIM ensures that IT investments improve operational performance, creating a healthy organization and make the most from a network, people and budgets.

✓ A higher productivity

You can manage all Moves, Adds and Changes from one location and anywhere in the world. Work orders are being created, executed and recorded from MIIM. Errors are excluded and you will save a lot of time.

✓ Realtime access to valuable information

All cable infrastructure will be transparent from end-to-end, including equipment, from switches up to the connected assets, even if they are switched off. You will receive information on a 'need to know' basis.

✓ Significant reduction in downtime

If there is an incident or failure in your network, you will get an immediate notification. You can see exactly what caused the failure and can fix it immediately; the down-time is significantly shorter..

✓ Better control and visibility of physical cabling structure

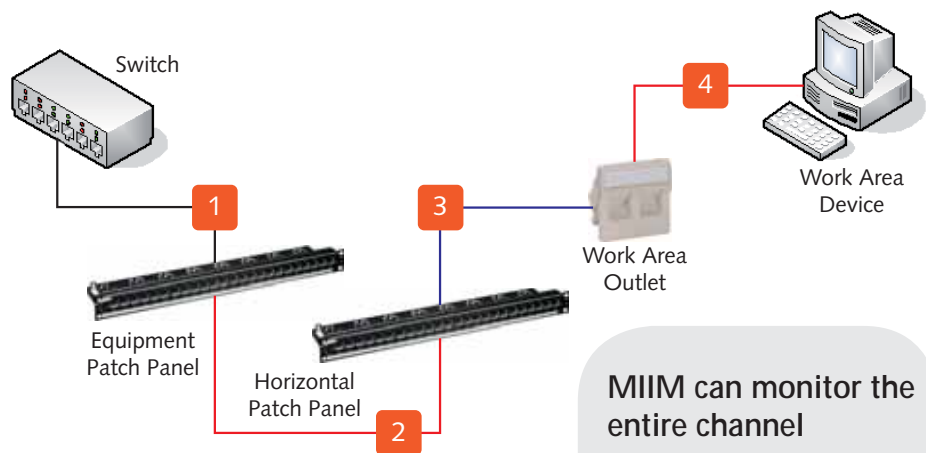
Free cables in the network so expensive switch ports are meaninglessly used, faulty patches, cables that disappear or are not connected? This is now all excluded; audits are no longer necessary.

✓ Multi-site management

All sites can be managed from one single website, allowing you to have insight in the entire network on remote. No more unnecessary trips so you can save many IT costs.

✓ Improved network security

All assets are transparent and you can see where they are located. When coupling or uncoupling assets to the network, you get an instant message, even if the unit is turned off!



MIIM can monitor the entire channel

1. Switch to device panel
2. Standard RJ45 patch cable
3. Horizontal cabling
4. Standard RJ45 workplace cable

✓ Low bandwidth

MIIM technology uses little bandwidth. The unique data from a device or set of devices can be accessed without having to access the network and use significant bandwidth.

✓ Simple and cost effective

MIIM is easy to maintain, easy to install and easy to use. There are no separate patch cords, cables or displays needed. MIIM integrates seamlessly with other IP systems.



About Molex

Molex Incorporated is the world's second largest manufacturer of electronic, electrical and optical interconnection products and systems, switches and application tools. It is located in Lisle, Illinois (USA), has over 70 years of experience and has 54 production facilities in 19 countries. As one of the original pioneers in structured cabling, Molex has delivered state-of-the-art communication solutions to large organizations around the world.

PATCHPANELS

MOLEX POWERCAT 6A SHIELDED PATCHPANEL 24 PORTS

The PowerCat 6A Shielded Patch Panel is made from robust sheet metal. This panel is supplied with a robust removable rear cable management tray for cable strain relief and neat cable dressing. Port numbering is provided on the front and rear of the panel and individual ports may be colour coded using connector icon labels for site specific network administration.

The PowerCat 6A Shielded Patch Panel features the unique DataGate™ Shielded connector. This shielded connector offers superior alien crosstalk suppression, excellent insertion loss, and provides enhanced electromagnetic interference (EMI) protection by utilising robust die-cast zinc alloy connector body housing. This shielded connector also features a unique spring loaded shutter that not only protects against dust and contaminants, but also eliminates the risk of improperly seated patch cords. The shielded connector is dual colour coded for either 568A or 568B wiring schedules. The DataGate PowerCat 6A Shielded connector is specifically developed for high-speed data transmission; designed to exceed the highest electrical performance standards in the industry. The DataGate PowerCat 6A Shielded connector is backwards compatible with Shielded C6 and C5e systems.

- DataGate™ connectors features a unique spring loaded shutter that protects against dust.
- Integral cable management shelf ensure bend radius compliance
- EIA 568A/B colour coded
- ETL Verified



molex

Type no.	Supplier no.	Ports
MX0001	PID-00217	CAT6A 24 x RJ-45 Shielded

MOLEX POWERCAT 6 UNSHIELDED PATCHPANEL 24 PORTS

The PowerCat 6 patchpanel features the shuttered DataGate™ connector. This connector provides a unique spring loaded shutter that not only protects it from dust and contaminants, but it also ejects improperly seated patch cords. This panel is supplied with a rear cable management tray for cable strain relief and neat cable dressing. Port numbering is provided on the front and rear of the panel and individual ports may be colour coded using connector icon labels for site specific network administration.

- DataGate™ connectors features a unique spring loaded shutter that protects against dust.
- Integral cable management shelf ensure bend radius compliance
- EIA 568A/B colour coded
- ETL Verified



molex

Type no.	Supplier no.	Ports
MX0003	PID-00141	CAT6 24 x RJ-45 unshielded

MOLEX POWERCAT 5E UNSHIELDED PATCHPANEL 24-PORTS

PowerCAT 5E Standard Grade Patch Panel is a cost effective and versatile means for connecting horizontal cabling. Featuring an integral rear cable management tray for cable strain relief and neat cable dressing. Port labelling is also featured for site specific network administration.

- Integral cable management shelf
- EIA 568B colour coded



molex

Type no.	Supplier no.	Ports
MX0005	PID-00058	CAT5E 24 x RJ-45 unshielded

MOLEX FIBER OPTIC SWING-OUT PATCHPANEL 1U

The Swing-Out Patch Panel is a light-weight, robust fiber optic patch panel designed for the installation of up to 48 standard optic fibers or Laserstream™ blown fiber. The panel offers an economic alternative to metal fiber enclosures. The lower tray is designed to pivot to gain access to the pre-formed fiber and splice management areas for easy cable dressing and installation. All common adapter types, LC, SC and ST, are factory assembled into interchangeable front plates that accommodate 6/12 duplex or 12 simplex adapters each.

Chassis includes installation accessory kit as follows:

- 2x splice holders
 - 1x cable anchor bracket kit
 - 2x tight buffer fibre holders
 - 1x tight buffer inserter tool
 - 1x front plate label sheet (4 labels per sheet)
 - 1x 435mm bend limiting tube
- Manufactured from high-strength, light-weight UL94 V-0 rated material.
 - No additional cable management accessories required.
 - Compatible with Laserstream blown fibre tubes (5mm)
 - Stackable splice bay allows for easy upgrade of splicing capacity
 - Interchangeable front plates are fully loaded with adapters.



molex

Type no.	Supplier no.	Type
MX0016	RFR-00205	Chassis
MX0017	RFR-00208	Front panel 6x duplex SC multimode
MX0018	RFR-00212	Front panel 12x duplex LC multimode
MX0019	KFR-00038	Label sheets
MX0020	KFR-00039	cable anchor kit.

MOLEX FIBER ENCLOSURE

The 601 fibre series wall mount enclosure is a compact unit for optical fibre. The unit is made of white rugged plastic with a low profile design that provides sufficient storage room for the fibre service loop making installation easy whilst ensuring the proper internal fiber management.

Compatible for splicing and direct terminations the unit can accept up to 8 fusion splice protectors or mechanical splices. The 601 enclosure is supplied with an accessory kit which includes cable ties, labelling and mounting kits.

- Available in Single and multimode fiber versions.



molex

Type no.	Supplier no.	Connectors
MX0029	WFR-00029-02	8x duplex LC singlemode
MX0030	WFR-00034-02	12x duplex LC multimode

MOLEX UNIVERSAL SPLICING TRAY

The Universal Splice Tray is a configurable enclosure capable for both mechanical and fusion splices. Loose tube cable is routed into and out of the tray through adjustable tube grips located at each corner. Grips eliminate the need for cable ties and can be tightened and loosened preventing over-compression of the loose tube cable.



molex

Type no.	Supplier no.	Type	Package
MX0021	KFR-00040	45 mm fusion splice protector - 2.2 mm (o.d)	Unit 100 Piece(s)
MX0024	AFR-00190	Low Profile 24 fiber fusion splice	
MX0025	AFR-00001	Universal splicing tray for 12 fibres.	
MX0026	AFR-00336	Universal splicing tray for 24 fibres.	
MX0027	AFR-00338	Universal splicing tray unloaded	
MX0028	KFR-00008	45 mm fusion splice protector - 2.4 mm (o.d)	

PATCHPANELS

MOLEX FIBER MANAGEMENT PANEL

The FMP3 body kit is a universal panel, using a common chassis that is interchangeable with our range of front plates. The FMP3 is a rack mounted panel, can be used as both a sliding and fixed panel and allows direct mounting of the connectors into the front panel plates.



- Up to 24 ports (48 fibers)
- Different front plates available.
- Strain relief for fibercable

Technical specifications

Dimensions : 442 x 291 x 44 mm

molex

Type no.	Supplier no.	Type
MX0012	RFR-00100	Body kit
MX0013	RFR-00195	Front plate 24 port duplex LC adapter Multimode
MX0014	KFR-00016	SC SPX lug (MT-RJ/Duplex LC)
MX0015	CSP-00030	Mounting adapter screw for Fiber Management Panel

MOLEX 12 FIBER ADAPTER PLATE

12 Fibre Adapter Plates fit directly into most Molex fibre management enclosures. This simple design requires no tooling as the plates install with a simple snap rivet, making installation and changes simple.



- Quad versions are with Molex unique shuttered technologie to protect installers and end users form LED/Laser light emissions.

molex

Type no.	Supplier no.	Type
MX0022	AFR-00374	SC Duplex 12 Fiber adapter plate, Multimode OM3 - Aqua
MX0023	AFR-00375	LC Quad 12 Fibre MM OM3 adapter plate Aqua

MOLEX RING RUN PANEL, 1U

Cable Management Panels provide cable dressing during installation or changes and provide an organised format for system maintenance. Panels are comprised of black Lexan rings mounted on graphite grey powdercoat panels and include mounting screws and washers.



- 1U Standard 19" rack mount
- Robust construction.
- Flexible rings for convenient operation
- Rounded edges to prevent damage to patch cords

molex

Type no.	Supplier no.	Type
MX0007	25.B016G	5 ring 1U panel

MOLEX POWERCAT 6A U/FTP SOLID CABLE

The Molex PowerCat 6A U/FTP Cable is specifically designed to support high speed data network applications such as 10-Gigabit Ethernet (10GBASE-T). The cable is constructed of 4 screened pairs and a drain wire. This cable minimises alien crosstalk, provides excellent signal isolation and provides superior electromagnetic interference (EMI) protection.

- U/FTP LSZH cable
- Supports high speed data network applications such as 10-Gigabit Ethernet (10GBASE-T)
- Enhanced performance individually screened 4 pair U/FTP LSZH cable.
- Minimises alien crosstalk, provides excellent signal isolation and provides superior electromagnetic (EMI) protection.
- ETL verified to TIA/EIA-568-B.2-10 Category 6A standard.



Technical specifications

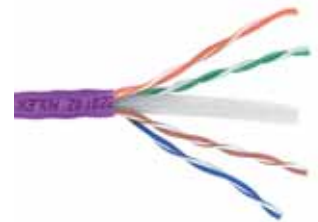
Conductor	: AWG#23 solid
Sheat	: LSZH IEC 60332-1
Cable diameter	: 6.8 mm
Colour	: Violet

Type no.	Supplier no.	Package
MX0033	CAA-0322L-VL	Reel 500 m

MOLEX POWERCAT 6 U/UTP LSZH SOLID CABLE

PowerCAT 6 4 pair U/UTP cable has been designed to support high-speed datatransmission systems. The cable features a cross-member designed to keep individual pairs separated for the reduction of NEXT and ELFEXT. The cable is available on 500m reel and 305m reel in a box.

- Unshielded 4 pair LSZH cable
- Central separator for the reduction of NEXT & ELFEXT.
- ETL verified.



Technical specifications

Conductor	: AWG#23 solid
Sheat	: LSZH IEC 60332-1
Cable diameter	: 6.4 mm
Colour	: Violet (RAL 4005)

Type no.	Supplier no.	Package
MX0032	CAA-00325	Reel 500 m
MX0034	CAA-00305	Reel in box 305 m

MOLEX POWERCAT 5E U/UTP SOLID LSZH CABLE

PowerCat Category 5E U/UTP 4 pair cable supports high-speed datatransmission systems. The cable is available on a 305m reel in a box.

- Unshielded 4 pair LSZH cable
- Independently tested



Technical specifications

Conductor	: AWG#24 solid
Sheat	: LSZH IEC 60332-1
Cable diameter	: 5.2 mm
Colour	: Violet

Type no.	Supplier no.	Package
MX0031	39-504-5E	Reel in box 305 m

WALL MOUNTING MATERIAL

MOLEX POWERCAT 6A SHIELDED DIN49075 MODULE

The PowerCat 6A shielded DIN module is designed for compatibility with the 50 x 50mm DIN 49075 standard. The angled design reduces patch cord bend radius and features a protected labelling facility. Individual ports may be colour coded using a connector icon label, for site-specific network administration.



The PowerCat 6A side entry DIN module is designed specifically for shallow backbox and trunking applications. The module features the unique side entry DataGate shielded connector. This shielded connector offers superior alien crosstalk suppression, excellent insertion loss, and provides enhanced electromagnetic interference (EMI) protection by utilising robust die-cast zinc alloy connector body housing. This shielded connector also features a unique spring loaded shutter that not only protects it from dust and contaminants, but also ejects improperly seated patch cords thanks to its ingenious spring loaded design. The shielded connector is dual colour coded for either 568A or 568B wiring schedules.

- Busch Jaeger®, Peha®, Jung®, Gira®, Niko® bezel compatible
- Two Ports protected by spring loaded shutters
- EIA 568B colour coded

Technical specifications

Dimensions : 50 x 50 mm (DIN 49075)

Type no.	Supplier no.	Ports
MX0002	WNC-00051-06	2x RJ-45

MOLEX POWERCAT 6 UTP DIN49075 MODULE

The PowerCat 6 DIN module is compatible with the 50 x 50mm DIN 49075 standard. It is a fully assembled unit featuring the shuttered DataGate Plus™ connector. The angled design reduces patch cord bend radius and features a protected labelling facility. Individual ports may be colour coded using a connector icon label, for site-specific network administration. The DataGate Plus™ RJ-45 IDC connector includes a unique integral shutter that not only protects the connector from dust and contaminants, but also ejects improperly seated patch cords thanks to its ingenious spring-loaded design. The DataGate Plus connector is dual colour coded for either 568A or 568B wiring schedules and is RJ-11 compatible.



- Busch Jaeger®, Peha®, Jung®, Gira®, Niko® bezel compatible
- Two Ports protected by spring loaded shutters
- EIA 568B colour coded

Technical specifications

Dimensions : 50 x 50 mm (DIN 49075)

Type no.	Supplier no.	Ports
MX0004	WNC-00031-06	2x RJ-45

MOLEX POWERCAT 5E UTP DIN49075 MODULE

The DIN Module has been designed for compatibility with the 50 x 50mm DIN 49075 standard. The module will support all currently ratified applications including gigabit Ethernet. The product is a fully assembled unit, complete with 2 PowerCat RJLP RJ-45 connectors protected by spring loaded shutters. Suitable for high speed data transmission, the PowerCat RJLP RJ-45 connector was designed to meet the requirements of the Category 5E standard which demands compliance with the Power Sum principle of measurement and test.



- Busch Jaeger®, Peha®, Jung®, Gira®, Niko® bezel compatible
- Two Ports protected by spring loaded shutters
- EIA 568B colour coded

Technical specifications

Dimensions : 50 x 50 mm (DIN 49075)

Type no.	Supplier no.	Ports
MX0006	WNC-00020-06	2x RJ-45

MOLEX POWERCAT MODULE FOR BELGIUM

The PowerCat UTP 22.5 x 45mm module is compatible with the Legrand® range of 45 x 45mm bezels. Two modules or a single module and a blank may be installed in this format. The product is a fully assembled unit featuring the shuttered DataGate Plus™ connector. The angled design reduces patch cord bend radius and features a protected labelling feature. Individual ports may be colour coded using a connector icon, for site-specific network administration. The 22.5 x 45mm module features the DataGate Plus Category 6 connector. This superior RJ45 IDC includes a unique integral shutter that not only protects the connector from dust and contaminants, but the ingenious spring-loaded design also ejects improperly seated patch cords. The DataGate Plus connector is dual colour coded for either 568A or 568B wiring schedules and is RJ11 compatible.



Type no.	Supplier no.	Type
MX0035	MLG-00021-02	C6 UTP 1 x RJ-45 22.5 X 45 mm
MX0036	MLG-00002-02	C5E UTP 1 x RJ-45 22.5 x 45 mm.
MX0037	16.A0012	Blank module 22.5 x 45 mm.

MOLEX TERMINATION TOOL

The Category 6 110 style multi pair termination tool provides 4-pair high impact termination specifically for Molex 110 style Category 6 connector termination.



molex

Type no.	Supplier no.	Type
MX0008	31-001	110 punchdown termination tool

MOLEX SLT3S TESTER

The SLT3™ Tester is a rugged, lightweight product designed to verify the integrity of 1, 2, 3, and 4 pair UTP channels. Incorporating a unique 3-in-1 design, this tester features built-in modular jacks for USOC, EIA 568A and 568B wiring sequences. Simply connect the master and slave unit to each end of the cable under test, and the SLT3 automatically verifies correct cable sequence, as well as open and short circuits.

- Innovative 3-in-1 design features modular jacks for testing USOC, EIA 568A and 568B cabling systems.
- Accurately verifies the continuity and sequence of 1, 2, 3 and 4 pair UTP and FTP channels.
- Continuously-sequencing LED display provides a diagnostic readout that immediately detects shorts, opens, reversals and mis-wires at a glance



molex

Type no.	Supplier no.	Type
MX0009	33A-100-10	Master and Slave unit with 9 Volt battery.

Fiber to the Office : reduce costs and extend the lifetime of a network

Glass fiber connections in office environments are booming. Whether it comes to the construction, extension or renewal of a corporate network, fiber is an easy to handle cable that is future-oriented, energy-efficient and cost-efficient. The Fiber-to-the-Office (FTTO) concept by MICROSENS is the ultimate cable infrastructure for modern office environments!

✓ Why future oriented?

Thanks to the fiber technique FTTO can meet the increasing demands of data traffic in the future.

- Long distances (> 100 km).
- Virtually unlimited bandwidth.
- Longer lifetime.

✓ Why cost efficient?

The costs of a fiber network are already recovered in the installation phase.

- Where there is a copper cable required for each socket in case of copper cabling, FTTO enables a fiber optic network switch to have network access by means of only one single fiber cable.
- No extra costs for air conditioning, UPS and access control.
- Relatively cheaper cable.
- Higher security (tapping).

✓ Why energy efficient?

Fiber connections in offices also provide an energy efficient network infrastructure.

- No active equipment required for signal processing within the network.
- No air conditioning equipment and UPS needed.
- Low space.
- No EMC issues or problems with grounding.

About MICROSENS

MICROSENS GmbH & Co. KG has been one of the world's pioneers in optical fiber transmission systems for 20 years. It not only offers solutions for effective office networks and industrial Applications in harsh environments, but also for large LAN and high performance WAN environments. An efficient and fast data transmission is the central focus. MICROSENS is part of the German euro micron group.

What more does MICROSENS offer?

Besides Fiber To The Office, MICROSENS provides solutions for industrial Ethernet; the Ethernet ring technology, developed by MICROSENS, allows the setup of redundant ring structures in Ethernet networks. The ultra-fast protection mechanism provides a short response time for mission-critical and failure sensitive applications.

The Optical Transport Platform of MICROSENS provides enterprises with a scalable, long-life connectivity solution, because the system grows with the ever increasing bandwidth requirements without the need for new fiber connections.

For more information and questions please contact our sales team.



FTTO vs. Structured Cabling Network (SCN)

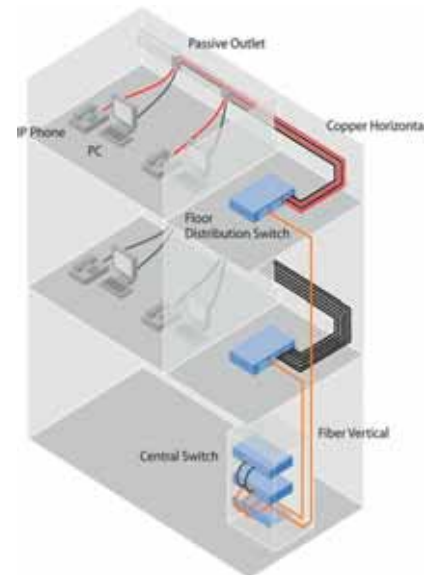
In a classic SCN the horizontal cabling at every level exists of copper cables that connect the data ports at the office to the central Ethernet switches that are placed on the same floor.

With the FTTO concept, fiber optic cables are implemented for the horizontal floor wiring and there is only one central Ethernet switch that provides the entire office of a network connection. End users connect their equipment directly to the copper Ethernet ports via MICROSENS' 4 port fiber Micro Switches (Fast Ethernet or 1 Gb) at the workplaces.



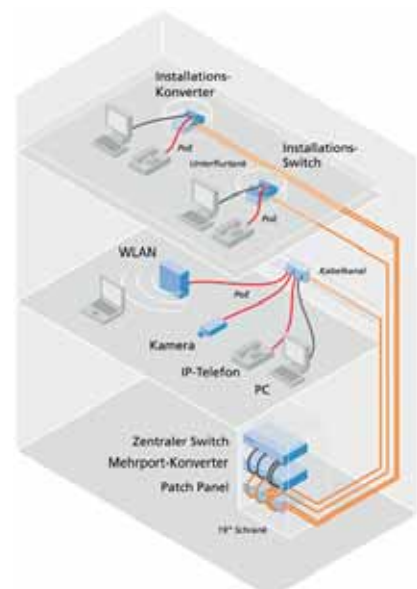
Disadvantages Structured Cabling Network (copper)

- ✗ Copper does not support higher data rates than max 10 Gb/s (short-range)
- ✗ Strict lengths limitations (max. 100 m)
- ✗ Many wiring cabinets for cable consolidation needed (could be more than 100 per floor), wasting valuable commercial space
- ✗ Thick cable trunks with high fire load and susceptibility to EMI (Electromagnetic Interference) can have negative impact on overall network reliability
- ✗ High demand for network hardware leading to low energy efficiency, high cost for cooling and maintenance and power resilience
- ✗ Limited average bandwidth per user. One Gigabit link is shared by up to 24/48 users
- ✗ Change of technology requires completely new horizontal cabling



Advantages Fiber To The Office (fiber)

- ✓ Support of all present and future data rates
- ✓ Almost no length limitations (typical several thousand meters for single mode fiber)
- ✓ No active equipment needed for signal conditioning within the networking path
- ✓ Gain of building space, open for commercial use
- ✓ Cable volume is reduced by 75 per cent, reduced fireload, high resistance to electromagnetic interference
- ✓ No additional cost for climatization, uninterruptable power supply and access control
- ✓ High bandwidth per user. Only four users per FTTO Switch share one Gigabit link
- ✓ In case of technology change the floor cabling does not need to be renewed
- ✓ Integration of POE, Power-over-Ethernet (+) through the MICROSENS Micro Switches



GIGABIT ETHERNET MICROSWITCH 6 PORT GENERATION 6



The 6 port GBE Micro Switch Generation 6 constitutes an extension of the Gigabit Ethernet Micro Switch. In addition to the 1000Base-X fiber optic uplink, for linking to the central distributor, this switch has an additional RJ-45 downlink 10/100/1000Base-T.

This additional connection can, amongst other things, be used for cascading other Micro Switches in order to obtain additional connection capacities. The interconnection of two switches via the TP port offers to increase the reliability of the network. If one fiber connection is interrupted the neighbouring switch handles the data traffic via RSTP.

A powerful Linux-OS offers additional services and feature for future use. The use of memory-card shortens maintenance and service. Intelligent power management monitors the active current consumption of connected end equipment. The switches are powered by an external 230V AC.

- High performance, full Gigabit design
- RJ-45 downlinkport for hidden connection of Ethernet devices (10/100/1000T)
- Energy efficiency by modern chipsets
- Manageable (web/Telnet/SNMP/ optional NMP software)

Technical specifications

Ports : 4x 10/100/1000Base TX (RJ-45)+1 downlink 10/100/1000Base TX (RJ-45)

Type no.	Supplier no.	Type
MR0001	MS440201M-G6	Uplink 1000Base-SX multimode SC
MR0002	MS440202M-G6	Uplink 1000Base-SX singlemode SC
MR0003	MS440209M-G6	Uplink 1000Base-SX SFP

GIGABIT ETHERNET MICROSWITCH 6 PORT GENERATION 6 WITH POE+



The 6 port GBE Micro Switch Generation 6 constitutes an extension of the Gigabit Ethernet Micro Switch. In addition to the 1000Base-X fiber optic uplink, for linking to the central distributor, this switch has an additional RJ-45 downlink 10/100/1000Base-T. This additional connection is positioned at the rear of the switch and is also covered after the installation. This additional connection can, amongst other things, be used for cascading other Micro Switches in order to obtain additional connection capacities.

The interconnection of two switches via the TP port offers to increase the reliability of the network. If one fiber connection is interrupted the neighbouring switch handles the data traffic via RSTP.

All five RJ-45 ports (4 user ports and 1 downlink) support the complete Powerover- Ethernet functionality according the IEEE Std. 802.3af and 802.3at (min. 54VDC needed). A powerful Linux-OS offers additional services and feature for future use.

The use of memory-card shortens maintenance and service windows. The whole configuration of the Micro Switch can be moved to another system, just by changing the SD-card. A fault-tolerant journaling file-system is used. An encryption of the SD-Card is as option available.

Intelligent power management monitors the active current consumption of connected end equipment. The switches are powered by an external 54 V DC power supply.

The GBE Micro Switch supports Compact-SFP-Transceivers (C-SFP) for two redundant fiber-uplink.

- PoE+
- High performance, full Gigabit design
- RJ-45 downlinkport for hidden connection of Ethernet devices (10/100/1000T)

Technical specifications

Ports : 4x 10/100/1000Base TX PoE+ (RJ-45)+1 downlink 10/100/1000Base TX PoE+ (RJ-45)

Type no.	Supplier no.	Type
MR0008	MS440201PM-48G6	Uplink 1000Base-SX multimode SC
MR0009	MS440209PM-48G6	Uplink 1000Base-SX SFP

FAST ETHERNET MANAGED MICROSWITCH 5 PORT.

The Fast Ethernet Micro Switches are extreme compact and are designed for the tool-free installation into cable trunks and sub-floor boxes. The design in 45x45 mm grid is compatible to the major international electro installation systems. The Micro Switches offer the complete Fast Ethernet performance on all ports. The uplink to the central switch is realised either by a transceiver.

The Fast Ethernet Micro Switch has an integrated 230 VAC power supply. The equipment generally has an integrated network management system and supports all management standards from the web browser over Telnet up to the SNMP. Furthermore, the switches have all common security features such as VLANs, authentication according to IEEE Std. 802.1x.

- Management with several configuration and monitoring features
- VLANs, data prioritisation (QoS)
- Integrated power supply with 100 – 240 V AC input

Technical specifications

Ports : 4x 10/100Base TX (RJ-45)+1 uplink 100Base FX Multimode SC

Type no.	Supplier no.	Type
MR0010	MS450241M	4x10/100Base + 1x100Base-FX SC



FAST ETHERNET MANAGED MICROSWITCH 5 PORT WITH POE

The Fast Ethernet Micro Switches are extreme compact and are designed for the tool-free installation into cable trunks and sub-floor boxes. The design in 45x45 mm grid is compatible to the major international electro installation systems. The Micro Switches offer the complete Fast Ethernet performance on all ports. The uplink to the central switch is realised either by a transceiver.

The equipment generally has an integrated network management system and supports all management standards from the web browser over Telnet up to the SNMP. Furthermore, the switches have all common security features such as VLANs, authentication according to IEEE Std. 802.1x.

The complete device is supplied with 48 V DC power. This supply can be done by a compact external power supply or a separate in-house DC power network..

- PoE controller according IEEE 802.3af
- The switch is supplied with 48 V DC power.
- VLANs, data prioritisation (QoS)
- Management with several configuration and monitoring features

Technical specifications

Ports : 4x 10/100Base TX (RJ-45)+1 uplink 100Base FX Multimode SC

Type no.	Supplier no.	Type
MR0012	MS450241PM-48	4x10/100Base+PoE + 1x100Base-FX SC



FAST ETHERNET MANAGED MICROSWITCH 6 PORT.

An intelligent combination of fiber optic (100Base-FX) and twisted pair (10/100Base-TX) is obtained with the Fast Ethernet Micro Switch. The device offers to the user also the standard RJ-45 ports for the connection of the end equipment to a fiber optic network. The compact 45x45 switches are designed for the direct installation into cable trunks and sub-floor boxes.

The 6 port version has on its rear side an additional RJ-45 downlink 10/100Base-TX that is covered after the installation. This additional connection enables cascading other Micro Switches offering thus additional connection capacities. The Fast Ethernet Micro Switch has an integrated 230 VAC power unit. This manageable version offers VLAN operation according to IEEE 802.1Q and further security features such as IEEE 802.1X, accounting, etc.

- Management with several configuration and monitoring features
- VLANs, data prioritisation (QoS)
- Integrated power supply with 100 – 240 V AC input

Technical specifications

Ports : 4x 10/100Base TX (RJ-45)+1 downlink 10/100Base TX

Type no.	Supplier no.	Type
MR0011	MS450333M	Uplink 100Base-FX multimode SC



FIBER TO THE OFFICE

FAST ETHERNET INSTALLATION TWIN CONVERTER

The MICROSENS Fiber To The Office concept with the intelligent combination of fiber optic and twisted pair cables is a long term, future proofed investment. The Installation Converter allows the easy and save connection of copper based LAN equipment to fiber optic networks, because of the extremely short delay time. There are two Converter integrated in one device because two working places are typical for office applications. Due to the very compact design of the Twin Converter it is compatible to nearly all available standards for office installation material. Because of the smart design the Twin Converter can ideally be installed in sub floor boxes.



- Double Converter 2x100Base-TX / 100Base-FX
- Bridge mode for speed adaptation 10/100 Mbps, half-/full-duplex
- Internal 230VAC power supply
- Hidden fiber port for high robustness of the complete system

Type no.	Supplier no.	Type
MR0013	MS450295	2x100Base TX - 100Base FX multimode LC

SFP PLUGGABLE TRANCEIVER GIGABIT ETHERNET

The majority of all active network devices are now equipped with modular optical interfaces in the form of SFP ports. For the user this permits the highest possible flexibility in terms of network configuration. MICROSENS provides a special range of SFP transceivers with extended temperature range especially for the insertion into network devices intended for operation in rough environments. The temperature range for operation is from -40 to +85 °C.

These SFP transceivers generally have an integrated digital diagnostics function and, depending on the version, are designed for Fast Ethernet (100Base-FX) or Gigabit Ethernet (1000Base-SX/LX). Multimode and single mode versions with different optical budget are available.



- Extended temperature range -40 °C till +85 °C.
- Management digital diagnostic functions.

Type no.	Supplier no.	Type
MR0004	MS100200DX	1000Base-SX multimode 850nm LC
MR0005	MS100210DX	1000Base-LX singlemode 1310nm LC

MOUNTING PLATE AND FRAME

Mounting plate and metal frame for Microsens FTTO switches



Type no.	Supplier no.	Type
MR0006	MS140029	Mounting plate+frame E2-box

MOUNTING TRUNCK C PROFILE

Mounting Trunck C profile kit for Microsens FTTO switches



Type no.	Supplier no.	Type
MR0007	MS140040BR	Mounting Trunk C profile

4/8 PORT GIGABIT ETHERNET INDUSTRIAL SWITCHES ENTRY LINE

The new Gigabit Ethernet industrial switch offers the full Gigabit performance on all ports. This offers, beside the central uplink, also the high speed connection of Gigabit end devices.

The new industrial switch belongs to the "Entry Line" family and has depending on the version up to eight RJ-45 ports and two SFP slots, which can be used alternatively to two RJ-45 ports (dual media). For the SFP slots MICROSENS offers a wide range of transceivers, which allow a flexible and cost effective fiber connection for multimode and single mode networks.

The devices of the MICROSENS "Entry Line" enable a simple network setup in a Plug&Play manner. Therefore many end users decide to change from field bus based automation to modern Ethernet based technology. Furthermore this migration gives significant cost savings for investment and operation of the network.

In principle Gigabit Ethernet is ideal to provide the required bandwidth and to transmit real time data for automation in shortest time. Reason beside the high bandwidth is that the latency time for forwarding the data packets is much lower.

- Extended temperature range -40. . +75 °C
- Connection of redundant power supply possible
- Monitoring with potential free contact

Technical specifications

Ports MR0014 : 4x 10/100/1000Base-T , 1 x SFP-Slot
 Ports MR0015 : 6 x 10/100/1000Base-T , 2x 10/100/1000Base-T or 2x SFP-Slots 1000Base-

Type no.	Supplier no.	Type
MR0014	MS655201X	4X10/100/1000BASE TX+1XSFP
MR0015	MS655210	8X10/100/1000BASE TX+2XSFP



5/8 PORT FAST ETHERNET INDUSTRIAL SWITCHES ENTRY LINE

The Entry Line series comprises a number of compact Fast Ethernet switches. The basic devices have 5x or 8x RJ-45 copper ports. Extended switch versions are equipped with additional fiber optic ports. For example, in addition to the 4x 10/100Base-TX ports in the 5 port version, a fiber optic port is available.

The devices can be operated immediately and require no configuration. Ports are set automatically by Auto-Negotiation (10/100/1000Base-T) and Auto MDI/MDI-X.

The power supply ports are designed redundantly. An isolated alarm contact reports a possible fault in the power supply of the device.

- Extended temperature range -40. . +75 °C
- 12 to 48 V DC power, redundant input.
- Monitoring with potential free contact

Type no.	Supplier no.	Type
MR0018	MS655102X	4x 10/100Base-TX, 1x 100Base-FX multimode SC
MR0016	MS655100X	5x 10/100Base-TX
MR0017	MS655140X	8x 10/100Base-TX



5 PORT FAST ETHERNET INDUSTRIAL SWITCHES WITH POE ENTRY LINE

Microsens Fast Ethernet switches are available with integrated Power-over-Ethernet functionality. Four 10/100Base-TX ports facilitate the direct supply of terminal devices via the data connection in accordance with IEEE 802.3af with an output of up to 15.4 W per port. In the copper version the device has a fifth 10/100Base-TX uplink port. Other versions are provided with a fiber optic port in the multimode or single mode version. The ports are designed redundantly. Dedicated LED displays provide information on the power supply status up to the PoE functionality for each port.

- Extended temperature range -40. . +75 °C
- 48 V DC power, redundant input.
- Monitoring with potential free contact

Type no.	Supplier no.	Type
MR0019	MS655100PX-48	4x 10/100Base-TX + PoE, 1x 10/100Base TX uplink
MR0020	MS655102PX-48	4x 10/100Base-TX + PoE, 1x 100Base FX multimode SC
MR0021	MS655104PX-48	4x 10/100Base-TX + PoE, 1x 100Base FX singlemode SC



FAST ETHERNET AND GIGABIT ETHERNET BRIDGING CONVERTER

The new fast and Gigabit Ethernet Bridging converter of the Industrial Ethernet Entry Line offer transmission speeds up to 1 Gbps in Industrial Ethernet applications. In the office area Gigabit Ethernet has already established as the standard protocol. To integrate industrial end devices direct, MICROSENS offers the new Gigabit Ethernet Bridging Converter.

Beside the media conversion from copper to fiber the devices are doing a speed adaptation of 10/100Base-TX for Fast Ethernet and 10/100/1000Base-T for Gigabit Ethernet. This enables the direct connection of end devices with different speed to the existing central switch.

The devices are immediately ready for operation, a configuration by management is not necessary. With a plugable connector the power is supplied (redundant possible) and offers the monitoring of the device by a relay.

- Optional converter or bridging function (via DIP-switch)
- Automatic speed adjustment per Auto Negotiation
- Link Through function

Technical specifications

Input voltage : 48 V DC redundant

Type no.	Supplier no.	Type
MR0022	MS655060X	1x 10/100Base-TX - 100Base-FX multimode 1310nm SC
MR0023	MS655062X	1x 10/100Base-TX - 100Base-FX singlemode 1310nm SC
MR0024	MS655099X	1x 10/100Base-TX - 100Base-X SFP port



DEVICE SERVERS FOR RS-232/422/485 TO ETHERNET (IP)

The Device Server allows a fast and easy network connection of serial devices with RS-232/422/485 interfaces. The use is universal and independent of the type of the serial interface. For the transmission the IP protocol is used. For the connection to the Ethernet network the device has one RJ-45 port (10/100Base-TX).

The device is very compact and designed for mounting on DIN-rails. The Windows software for the detection, monitoring and configuration of the device is included at delivery. For operation there is a virtual COM port emulated on the PC. Furthermore there are TCP-Server and -Client services supported.

- Suitable for RS-232/422/485
- Reliable and cost effective conversion to Ethernet (10/100Base-TX)
- Emulation with virtual COM-Port
- Windows Software included

Type no.	Supplier no.	Type
MR0025	MS655400X	1x RS-232/422/485 to 2x 10/100Base-TX



FAST ETHERNET VDSL EXTENDER

The Fast Ethernet VDSL2 Extender offers transmission of Fast Ethernet across conventional 2-wired lines (telephone or ISTY cable) at distances of up to 2000 m (9Mbps).

With transmission speeds of up to 88 Mbps, this extender provides high network performance and can achieve a range of up to 300 m. The use of devices is in pairs according to the master/slave principle, in which case configuration is performed using a DIP switch.

The network connection takes place via an RJ-45 jack with 10/100Base-TX. The 2-wire line is connected via an RJ-45 jack. The maximum transmission speed is automatically negotiated in 10 speed levels according to distance and transmission quality and signalled to the user via LED displays.

The device is design for an operating temperature range of -40 to +75 °C.

- Transmission of Fast Ethernet via 2-wire cables
- 12..48 VDC power input, redundant
- Effective overvoltage protection
- Potential free alarm relay contact
- Operation temperature range -40..+75 °C
- Vibration proof and shock resistant

Type no.	Supplier no.	Type
MR0027	MS655020X	10/100Base-TX via 2-wire cable



INDUSTRIAL POWER-OVER ETHERNET+ INJECTOR

The industrial PoE Injector can power PoE-compliant switches, WLAN solutions or IP cameras directly through the data cable. Devices with maximum power consumption levels of up to 30 watts are supported. PoE+ is preferred for use at outdoor access points with heating elements or with motor-controlled surveillance cameras, since these devices consume more power.

The MICROSENS PoE Injector is also specially conceived with demanding industrial environments in mind. The device has an extended temperature range of -40 to +75 degrees, additional protection against shock and vibrations and a robust metal case built to Protection Class IP30 standards. Areas of application for this new solution range from automation technology to telecommunication-related uses to railway surveillance



- Supports 10/100/1000Mbps
- IEEE 802.3at compatible (30 W)
- Extended temperature range of -40 to +75°C
- Protection against shock and vibrations
- Robust metal case

Type no.	Supplier no.	Type
MR0028	MS655033X	Industrial PoE+ injector 10/100/1000Mbps

FAST ETHERNET SWITCHES



Katron Technologies Inc. (KTI) is one of the market leaders in networking products and offers a complete range of high-quality network components, from standard network cards to modular switches. KTI offers a wide range of networking products under its own brand, including media converters, switches, Fast Ethernet and Gigabit Ethernet switches. KTI is also a specialist in fiber optic applications. It offers quality products and services for a variety of organizations, from small businesses to multinationals.

KTI not only develops private label products, but also develops and manufactures for leading brands in networking markets. KTI designs and manufactures professional network solutions applied worldwide by for example airlines, factories, railway organizations, oil refineries and mining industries.

✓ What KTI solutions we offer?

- Switches (managed and unmanaged)
- Media converters (fiber, copper)
- Power over Ethernet (PoE , PoE+)
- SFP Modules
- IP67 switches (waterproof)
- DIN rail power supplies
- RS -232 to RS-422/485 converters
- RS - 232 over fiber

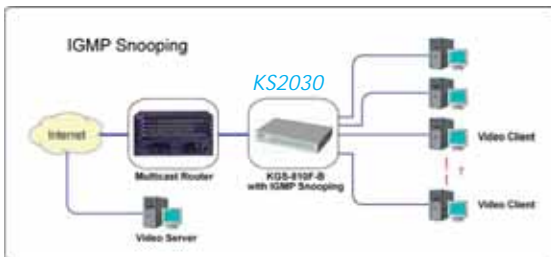


✓ 100% tested, zero DOA

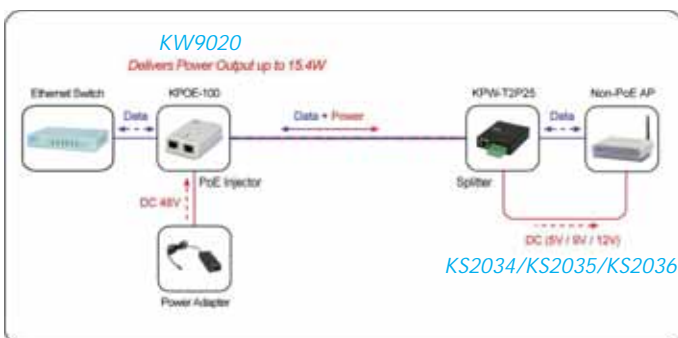
Quality is guaranteed by KTI's professional R&D department which understands what features are important to the user. Solutions are 100% tested on operation under extreme conditions before leaving the factory. The tests are taking place in superheated areas where, by means of temperature fluctuations, the burn-in that is equal to the first 6 weeks is simulated. Partly because of this, there are no DOA's and a very high Mean Time Between Failures (MTBF) can be realized.

✓ Advanced features

KTI solutions can have several advanced features, such as management options, fiber connectivity, IGMP snooping V1/V2, Tag VLAN and QoS.



✓ Power over Ethernet solutions (PoE , PoE+)



✓ Profinet compliant

The industrial switches of KTI are fully Profinet compliant.

✓ Compact and robust housing for DIN rail mounting

The industrial solutions of KTI are characterized by compact and robust housings that are suitable for DIN rail mounting..



✓ Industrial properties

KTI's industrial switches meet extreme requirements in the area of vibration resistance, immunity to EMI and temperature reach. Water and dust proof switches are available for extreme environments.

NWAY NETWORK SWITCH 10/100 MBPS

Compact desktop switches, perfect for workgroups and home use with a solid metal housing for a better magnetic shielding.

- Store and forward architecture.
- Supports 1000 MAC addresses.
- Contains LEDs for Power, Collision, Activity and Link status.
- Power supply included.



Technical specifications

Ports	: RJ-45 10/100 Base-T
Contains	: LEDs for power, collision, activity and link status
Dimension	: 116x70x25 mm
Housing	: Metal



Type no.	Supplier no.	Number of ports
KS1012	KS-SOHO-8 REV I	8

FAST ETHERNET LAYER 2 SWITCH WITH FIBER PORT

These compact desktop switches have a compact design. Work groups can be coupled to a fiber-optic network in an easy way.

- Ideal due to compact design.
- Supports full-duplex flow control.
- Indication LEDs for Power (Unit), Link/ACT (Port), 100M (Port).



Technical specifications

Number of MAC addresses	: 1.000
IEEE Standard	: IEEE 802.3, 10 BaseT, IEEE 802.3u 100 BaseTX, 100 Base Fx
Dimension	: 144x100x26 mm
Filtering addresses	: Unicast/Multicast
Power	: 100~240V AC, 50/60 Hz



Type no.	Supplier no.	Type
KS1060	KS-105FT	4x RJ45 + 1x MM Duplex ST
KS1062	KS-105FC	4x RJ45 + 1x MM Duplex SC
KS1064	KS-105F-JM	4x RJ45 + 1x MM MTRJ
KS1065	KS-108-FC	7x RJ45 + 1x MM Duplex SC
KS1066	KS-108-FT	7x RJ45 + 1x MM Duplex ST

16-PORT 10/100 MBPS LAYER 2 FAST ETHERNET SWITCH

This 16-port 10/100Mbps workgroup switch supports half-duplex and full-duplex connections. Each network port supports auto-MDI/MDI-X detection and auto-negotiation, making the switch very flexible while using the network with high efficiency. The switch uses the store-and-forward method; the data will only be forwarded if the receiver is reachable.

- Supports half and full duplex mode.
- Uses Auto MDI/MDI-X detection and auto negotiation for extra flexibility.
- Indication LEDs for Power (Unit), Link/ACT (Port), 100M (Port).



Technical specifications

Ports	: 16x 10/100 Mbps ports, RJ-45
Number of MAC addresses	: 8.000
IEEE standard	: 802.3 10BaseT, 802.3u 100BaseTX
Dimension	: 440x140x44 mm
Assembly	: 19" Rack, 1 HE
Power	: 100~240V AC, 50/60 Hz



Type no.	Supplier no.	Number of ports
KS1020	KS-116/D	16

FAST ETHERNET SWITCHES

24-PORT 10/100 MBPS LAYER 2 FAST ETHERNET SWITCH

Switch with 24x 10/100Base-T ports. Every port is auto-negotiation and equipped with MDI-X detection. Can be used as desktop or as a 19" mounted switch.

- Supports half and full duplex mode.
- Uses Auto MDI/MDI-X detection and auto negotiation for extra flexibility.
- Indication LEDs for Power (Unit), Link/ACT (Port), 100M (Port).



Technical specifications

Ports	: 24x RJ-45 STP
Number of MAC addresses	: 8.000
IEEE Standard	: IEEE 802.3 10 BaseT, IEEE 802.3u 100Base-TX
Dimension	: 440x140x44 mm
Assembly	: 19" Rack 1 HE or Desktop
Power	: 100~240V AC, 50/60 Hz



Type no.	Supplier no.	Number of ports
KS1030	KS-124/E	24

WEB SMART 24+2 PORTS FAST ETHERNET LAYER 2 SWITCH

The Web Smart 24-Port switch provides 24x 10/100 Mbps Fast Ethernet Ports & 2 Gigabit combo ports. The switch supports a port bandwidth control function and contains a web-based management interface. It can indicate port status, statistic monitoring and control function.

- No fan design.
- IGMP snooping support. (v1, v2)
- Wide operating temperature range.



Technical specifications

RJ-45 TP ports	: 24x shielded 10/100 Mbps
Combo ports	: 2x shielded 10/100 Mbps ports or 1000 Mbps SFP slots
Standard	: IEEE 802.3 10 Base-T, IEEE 802.3u, 100 Base-TX, IEEE 802.3z 1000 Base-T, IEEE 802.3ab, IEEE 802.1Q, IEEE 802.1p
Dimension (WxDxH)	: 295x160x43 mm
Environment temperature	: Operational: -20 - +60, Storage: -30 - +85 °C
Power Supply	: 100-240V AC



Type no.	Supplier no.	type
KS3200	KFS-2621	Web smart 24+2 ports SFP switch

GIGABIT SWITCHES

6-PORTS L2 GIGABIT ETHERNET SWITCH WITH 1 GBE SFP PORT & IGMP SNOOPING

- at all speeds
- IGMP snooping support. (v1, v2)
- High power saving

Technical specifications

Lan Ports	: 5 x 10/100/1000 Mbps, RJ-45 + 1x 1000Mbps SFP
-----------	---



Type no.	Supplier no.	Fiber optic port
KS2041	KGS-0600-SX	1x Multimode duplex LC (SFP)
KS2042	KGS-0600-LX	1x Singlemode duplex LC (SFP)

5+1-PORT GIGABIT LAYER 2 ETHERNET SWITCH

A compact, managed 6-port Gigabit Ethernet switch which is featured with five copper ports and one mini-GBIC (SFP) port.

- Compact design.
- Web management.
- IGMP snooping support. (v1, v2)
- Port mirroring function.

Technical specifications

Standard	: IEEE 802.3, 802.3u, 802.3ab, 802.3x, 802.1Q
Management support	: Web browser software
Dimension (WxDxH)	: 144x104.5x26 mm
Power	: 7.5V DC, 1A



Type no.	Supplier no.	Number of ports
KS2020	KGS-510F-SXLC	5 Gigabit ports + 1x Gbit SFP

WEB SMART 6-PORT L2 GIGABIT ETHERNET SWITCH WITH 2 FE AND 1 GBE SFP PORTS

- Web based management interface
- Supports SFP with Digital Diagnostic Monitoring (DMM)
- IGMP snooping support. (v1, v2)
- Supports 802.1w RSTP and MSTP

Technical specifications

Lan Ports	: 6x 10/100/1000 Mbps RJ-45, 1x 1000 Mbps SFP , 2x 100 Mbps SFP
-----------	---



Type no.	Supplier no.	Number of ports
KS2019	KGS-612-F	6 Gigabit ports, 2 Fast Ethernet and 1x 1Gbit SFP port

WEB SMART 8-PORT L2 GIGABIT ETHERNET SWITCH WITH 1 GBE SFP PORT

- Web based management interface
- Supports 802.1w RSTP and MSTP
- IGMP snooping support. (v1, v2)
- Port mirroring function.
- High power saving
- Supports SFP with Digital Diagnostic Monitoring (DMM)

Technical specifications

Lan Ports	: 7x 10/100/1000 Mbps RJ-45, 1x 1000 Mbps SFP
-----------	---



Type no.	Supplier no.	Number of ports
KS2030	KGS-810-F	8 Gigabit ports and 1x Gbit SFP port

16/24 PORT GIGABIT LAYER 2 ETHERNET SWITCH

The 24-Port 10/100/1000Base-T Gigabit Ethernet switch supports auto-negotiation and auto-MDI/MDI-X detection. The switch supports full/half duplex transfer mode for 10/100Mbps. The system is self learning for active MAC addresses up to 8k entries.

- Store-and-Forward switching method.
- Supports full-duplex transfer mode for 1000 Mbps.

Technical specifications

Standard	: IEEE 802.3a 10 Base-T, IEEE 802.3u, 100 Base-TX, IEEE 802.3ab 1000 Base-T
Dimension (WxDxH)	: 280x180x44 mm
Environment temperature	: Operating: 0 - +40, storage: -20 - +70 °C
Power supply	: 100-240V AC



Type no.	Supplier no.	RJ-45 TP ports
KS2140	KGS-124	24x shielded 10/100/1000 Mbps

GIGABIT SWITCHES

MANAGED 12+4 PORTS GIGABIT LAYER 2 ETHERNET SWITCH

The 16 port managed Gigabit Ethernet switch is a L2 switch that meets all IEEE 802.3/u/x/z Gigabit, Fast Ethernet specifications. The switch has 12x 10/100/1000 Mbps copper ports and 4 combo ports with copper and Gigabit SFP slots. The switch supports console CLI, Telnet CLI, Web GUI and SNMP interface for switch management. The switch supports o.a. the following functions: Quality of Service, VLAN, IGMP and RSTP.



- IGMP snooping support. (v1, v2)
- Power saving support

Technical specifications

RJ-45 TP ports	: 12x shielded 10/100/1000 Mbps
Combo ports	: 4x shielded 10/100/1000 Mbps or 1000Mbps SFP slots
Standard	: IEEE 802.3, 802.3ab, 802.3z, 802.3x, 802.3af, 802.1x, 802.1w, 802.1d, 802.1q
Dimension (WxDxH)	: 443x245x43 mm
Environment temperature	: Operating: -5 - +50, storage: -20 -+85 °C
Power supply	: 100-240V AC



Type no.	Supplier no.	type
KS2130	KGS-1620	Managed 12+4 ports GbE switch

MANAGED 16+8 PORTS GIGABIT LATER 2 ETHERNET SWITCH

The KGS-2420, a 24-port managed Gigabit Ethernet switch is a standard switch that meets all IEEE 802.3 Gigabit, Fast Ethernet specifications. The switch includes 8 Combo, RJ-45/SFP ports and 16 Gigabit SFP fiber ports. The switch can be managed through RS-232 serial console port directly or through the switched ports using in-band CLI or Web-based interfaces or SNMP. The switch features comprehensive and useful functions such as QoS (Quality of Service), Spanning Tree, 802.1Q VLAN, Port Link Aggregation, Bandwidth Control, Port Security, SNMP/RMON, IGMP snooping capability via the intelligent software package. It is suitable for both metro-LAN and office application.



- Includes many SFP ports
- Auto-Negotiation feature
- Supports IP Multicasting

Technical specifications

SFP slots	: 16x 1000 Mbps SFP
Combo ports	: 8x shielded 10/100/1000 Mbps or 1000 Mbps SFP slots
Standard	: IEEE 802.3, 802.3u, 802.3ab, 802.3z, 802.3x, 802.1Q, 802.1P
Dimension (WxDxH)	: 442x209x44 mm
Environment temperature	: Operating: 0 - +40, storage: -20 - +70 °C
Power supply	: 100-240V AC



Type no.	Supplier no.	type
KS2150	KGS-2420	Managed 16+8 ports GbE switch

MANAGED 20+4 GIGABIT LAYER 2 ETHERNET SWITCH

The 24 port managed Gigabit Ethernet switch is a L2 switch that meets all IEEE 802.3/u/x/z Gigabit, Fast Ethernet specifications. The switch has 12/20x 10/100/1000 Mbps copper ports and 4 combo ports with copper and Gigabit SFP slots. The switch supports console CLI, Telnet CLI, Web GUI and SNMP interface for switch management. The switch supports o.a. the following functions: Quality of Service, VLAN, IGMP and RSTP.



- IGMP snooping support. (v1, v2)
- Power saving support.

Technical specifications

RJ-45 TP ports	: 20x shielded 10/100/1000 Mbps
Combo ports	: 4x shielded 10/100/1000 Mbps or 1000 Mbps SFP slots
Standard	: IEEE 802.3, 802.3ab, 802.3z, 802.3x, 802.3af, 802.1x, 802.1w, 802.1d, 802.1q
Dimension (WxDxH)	: 443x245x43 mm
Environment temperature	: Operating: -5 - +50, storage: -20 - +85 °C
Power supply	: 100-240V AC



Type no.	Supplier no.	type
KS2132	KGS-2421	Managed 20+4 port GbE switch

MANAGED 20+4 PORTS GIGABIT LAYER 2 ETHERNET SWITCH WITH 4 SFP

The managed 24-port Stackable Gigabit Ethernet Switches are standard L2 switches that meets all IEEE 802.3/u/x/z Gigabit, Fast Ethernet specifications. The switch has 20 10/100/1000Mbps copper ports and 4 combo ports with four additional Gigabit SFP slots. The SFP slots support standard SFP fiber optical transceivers for fiber optic application.



- Provides two 5G stack ports for stacking multiple switches and single point of management
- Supports power saving mode when port link down or different RJ-45 cable length.
- IGMP snooping support. (v1, v2)
- Supports IPv6 configuration

Technical specifications

Ports : 20 x 10/100/1000 Mbps, RJ-45
SFP slots : 4x 10/100/1000 Mbps copper & 1000Mbps Fiber



Type no.	Supplier no.	Type
KS2136	KGS-2423-PS	24-Port + 4x SFP switch with PoE support
KS2135	KGS-2423-S	24-Port + 4x SFP switch without PoE support

24 PORT WEB MANAGED GIGABIT LAYER 2 ETHERNET SWITCH

This switch has 24 Gigabit Ethernet ports, all these ports provide auto-negotiation and auto-MDI/MDI-X detection. Examples of the possible functions are: Full wire speed forwarding, port statistics functions, VLAN and QoS. The switch is managed by use of the console port or through a web interface.



- IGMP snooping support. (v1, v2)

Technical specifications

Ports : 10/100/1000 Mbps, RJ-45
Number of MAC addresses : 8.000 (KS 2050 4.000)
IEEE Standard : IEEE 802.3, 802.3u, 802.3ab, 802.3x, 802.1Q
Dimension : 441x196x44 mm
Assembly : 19" Rack 1 HE
Power : 100~240V AC, 50/60 Hz



Type no.	Supplier no.	Number of ports
KS2060	KGS-2404	24

MODULAR 3 SLOT MANAGED GIGABIT LAYER 2 ETHERNET SWITCH

The 24-port managed Gigabit Ethernet switch is a standard L2 switch that meets all IEEE 802.3/u/x/z Gigabit, Fast Ethernet applications. The switch provides three 8-port modular slots. Each slot can accommodate one 8-port module. A variety of modules is available for selection. Any combination of three different modules can be installed flexibly in one device rack. The system detects the types of the installed modules and configures modules automatically.



- Great variety of optional modules.
- IGMP snooping support. (v1, v2)

Technical specifications

Modular slots : 3x for 8-ports module
Standard : IEEE 802.3, 802.3ab, 802.3z, 802.3x, 802.3af, 802.1x, 802.1w, 802.1d, 802.1q
Dimension (WxDxH) : 443x245x43 mm
Environment temperature : Operating: -5 - +50, storage: -20 -+85 °C
Power supply : 100-240V AC



Type no.	Supplier no.	type
KS2100	KGS-2422	Modular Managed GbE switch
KS2104	KGS-2422-8GT	8x RJ-45 TP module
KS2106	KGS-2422-8GX	8x SFP module
KS2108	KGS-2422-8G4	4x RJ-45 TP + 4x SFP module
KS2110	KGS-2422-8FX-T	8x MM ST module
KS2112	KGS-2422-8FX-C	8x MM SC module
KS2114	KGS-2422-8FX-SL2	8x SM SC module
KS2116	KGS-2422-8FM-T	2x RJ-45 TP + 6 xMM ST module
KS2118	KGS-2422-8FM-C	2x RJ-45 TP + 6x MM SC module
KS2120	KGS-2422-8FM-SL2	2x RJ-45 TP + 6x SM SC module

GIGABIT SWITCHES

MANAGED 28-PORT GIGABIT ETHERNET SWITCH WITH 24 SFP PORTS AND 4 10G SFP+ PORTS

KGS-2800 provide 24 ports 100/1000Mbps SFP + 4 ports Combo Gigabit TP ports and 4 ports 1G/10G SFP+ in a single device.

- SFP supports Dual speed 100/1000Mbps.
- SFP+ supports dual speed 1000Mbps/10G.
- Web/Telnet/SNMP console management
- IGMP snooping support. (v1, v2)
- STP/RSTP/MSTP support.
- Support IPv6/IPv4 dual stack.



Type no.	Supplier no.	Type
KS2151	KGS-2800	24 SFP ports and 4x 10Gbit SFP+ ports

SFP TRANSCEIVERS

SFP TRANSCEIVER MODULE MULTIMODE 2 KM

Many KTI switches are currently equipped with optional SFP inputs. Via these SFP inputs you can improve the flexibility of the switch you use and you can choose which module to use for what application. This product is a SFP fiber transceiver module without DDM support Multimode 2 km. Suitable for Fast Ethernet SFP slots.

Technical specifications

Ethernet type	: Fast Ethernet
Connector type	: LC Duplex , 100 Base FX
Fiber type/ distance	: Multimode 2 km
Operating temperature	: 0 °C~70 °C
Speed	: 155 l/s



Type no.	Supplier no.	Type
KS1082	SFP-FC-M-A	SFP module MM

SFP TRANSCEIVER MODULE SINGLEMODE 30 KM

Many KTI switches are currently equipped with optional SFP inputs. Via these SFP inputs you can improve the flexibility of the switch you use and you can choose which module to use for what application. This is a SFP fiber transceiver module without DDM support Singlemode 30 km. Suitable for Fast Ethernet SFP slots.

Technical specifications

Ethernet type	: Fast Ethernet
Connector type	: LC Duplex
Fiber type/ distance	: Singlemode 30 km
Operating temperature	: 0 °C~70 °C
Speed	: 155 l/s



Type no.	Supplier no.	Type
KS1083	SFP-FC-S30-A	SFP Module SM

SFP TRANSCEIVER MODULE SINGLEMODE 20 KM

Many KTI switches are currently equipped with optional SFP inputs. Via these SFP inputs you can improve the flexibility of the switch you use and you can choose which module to use for what application. This is a SFP fiber transceiver module set 1.25 of Gbps Singlemode 20 km. Suitable for Gigabit Ethernet SFP slots.

- WDM, for over single fiber

Technical specifications

Ethernet type	: Gigabit Ethernet
Connector type	: LC Simplex, 1000 Base LX
Fiber type/ distance	: Singlemode 20 km
Operating temperature	: 0 °C~70 °C
Speed	: 1.25 Gbps



Type no.	Supplier no.	Nm value
KS1104	SFP-GLS-W3520-A	Tx1310nm/Rx1550nm
KS1105	SFP-GLS-W5320-A	Tx1550nm/Rx1310nm

SFP TRANSCEIVER MODULE SINGLEMODE 40 KM

Many KTI switches are currently equipped with optional SFP inputs. Via these SFP inputs you can improve the flexibility of the switch you use and you can choose which module to use for what application. This is a SFP fiber transceiver module set 1.25 Gbps Singlemode 40 km. Suitable for Gigabit Ethernet SFP slots.

- WDM, for over one single fiber

Technical specifications

Ethernet type	: Gigabit Ethernet
Connector type	: LC Simplex, 1000 Base LX
Fiber type/ distance	: Singlemode 40 km
Operating temperature	: 0 °C~70 °C
Speed	: 1.25 Gbps

Type no.	Supplier no.	Wavelength
KS1106	SFP-GLS-W3540-A	Tx1310nm/Rx1550nm
KS1107	SFP-GLS-W5340-A	Tx1550nm/Rx1310nm



1000 BASE SFP MODULE

The KTI SFP modules can be used in switches and media converters which can use a 1000Base SFP module.

Technical specifications

Connector type	: LC Duplex
----------------	-------------

Type no.	Supplier no.	Mode
KS1087	SFP-GLM-A	Multimode SX
KS1088	SFP-GLS-10-A	Singlemode LX



10G SFP+ TRANCEIVER MULTIMODE FIBER, LC, 300M.

Technical specifications

Ethernet type	: 10G//GbE/FE
Connector type	: LC Duplex
Fiber type/distance	: Multimode OM3 / 300m
Operating temperature	: -10 °C~70 °C

Type no.	Supplier no.	Wavelength
KS1110	SFP-10G-SR-A	850nm



10G SFP+ TRANCEIVER SINGLE-MODE FIBER, LC , 10KM.

Technical specifications

Ethernet type	: 10G//GbE/FE
Connector type	: LC Duplex
Fiber type/distance	: Single-mode 10 km
Operating temperature	: -10 °C~70 °C

Type no.	Supplier no.	Wavelength
KS1111	SFP-10G-LR-A	1310nm



10G SFP+ TRANCEIVER SINGLE-MODE FIBER, LC, 40KM.

Technical specifications

Ethernet type	: 10G//GbE/FE
Connector type	: LC Duplex
Fiber type/distance	: Single-mode 40 km
Operating temperature	: -10 °C~70 °C

Type no.	Supplier no.	Wavelength
KS1112	SFP-10G-LR40-A	1310nm



10G SFP+ TRANCEIVER SINGLE-MODE FIBER, LC, 80KM.

Technical specifications

Ethernet type	: 10G//GbE/FE
Connector type	: LC Duplex
Fiber type/distance	: Single-mode 80 km
Operating temperature	: -10 °C~70 °C

Type no.	Supplier no.	Wavelength
KS1113	SFP-10G-ZR-A	1310nm



NETWORK MEDIA CONVERTERS

TWISTED PAIR / FIBER MEDIA CONVERTER

This standalone media converter converts both media type and speed of the connection. The media converter is able to convert at full wire speed. By supporting the 'link fault pass through' and 'far end fault' functions, the media converter can report signal loss and connection problems, preventing data loss. Each standalone media converter can easily be placed in a converter center (KC 1040 series).



Technical specifications

Indication LEDs	: Power, TP link/act, TP speed, TP duplex status, FX link/act, FX signal
TP port	: 10Base-T, 100Base-TX, STP RJ-45
FX port	: 100Base-FX, far end fault function
Power supply	: +5V~+12V DC (supplied)
Dimension	: 108x72.5x23 mm



Type no.	Supplier no.	Fiber optic interface
KC1020	KC-300D-T	Multimode - ST
KC1022	KC-300D-C	Multimode - SC
KC1024	KC-300D-JM	Multimode - MTRJ
KC1026	KC-300D-SL2	Singlemode - SC

1000BASE TWISTED PAIR / FIBER MEDIA CONVERTER

The Gigabit media converter is designed to convert 1000Base-T signals to/from 1000Base-X fiber signals. It is used to extend the connection distance between two Gigabit Ethernet devices via fiber cable transparently with no performance degradation. With the SFP (Mini-GBIC) connector design, the media converter not only supports existing variety of multimode and singlemode fibers, but also preserves the flexibility to adapt to any change of your fiber network in the future. It also supports center chassis installation with optional power redundancy and management features when a larger fiber network is required. With pre-configured fiber transceivers, the converter also can support Bi-Di WDM and CWDM fiber network applications. Note: this product is delivered without SFP module. The module has to be ordered separately.



Technical specifications

Function	: For converting 1000 Base T signals in 1000 Base X signals and vice versa
----------	--



Type no.	Supplier no.	Output interface
KC1047	KGC300	SFP slot

GIGABIT MEDIA CONVERTER

A managed Gigabit Media Converter which is featured with 10/100/1000M copper port and mini-GBIC (SFP) port.

- SFP fiber port flexibility.
- Traffic control functions.
- Optional Din-Rail mounting.



Technical specifications

Standard	: IEEE 802.3, 802.3u, 802.3ab, 802.3z
Network cable	: CAT5E or higher
Mounting	: Desktop, Wall, Din-Rail (optional), Center chassis
Power	: +5 V~+12V DC
Management	: Web-based browser interface
Dimension (WxDxH)	: 108x72.5x23 mm



Type no.	Supplier no.	Type
KC1053	KGC-310M	Gigabit Media Converter

FIBERMEDIA CONVERTER

This mode converter converts multimode signals to singlemode and the other way around. Conversion from 1000 Base Sx to 1000 Base Lx, 100 Base Fx to 100 Base Fl and visa versa are supported. The SFP modules have to be ordered separately.

Technical specifications

Function	: For converting singlemode to multimode signals
----------	--



Type no.	Supplier no.	Type
KC1052	KGC-311	Mode converter

MEDIA CONVERTER CHASSIS 19"

The chassis is a simple 19" rack mountable chassis for KTI's media converter devices. It provides four slots for installation of four standalone media converters.

- Delivered without media converters
- Suitable for KC1020, KC1022, KC1024, KC1026, KC1047, KC1052, KC1053.



Type no.	Supplier no.	Type
KC1054	KCR-4MC	4-slot media converter chassis

MANAGED MEDIA CONVERTER CENTER 16 PORT

The intelligent media converter center provides 16 slots for standalone media converters of the KC1020 series. Managed: the managed media converter centers provide management through telnet, web and SNMP. These media converter centers also support software upgrade through TFTP.

Technical specifications

Indication LEDs	: Power, CPU status, Fan status, Console RX status, port link status
Power input	: 90-264V AC or 48V DC
Dimension	: 443x88x300 mm
Weight	: 5.5 kg
Assembly	: 19" Rack, 2 HE



Type no.	Supplier no.	Type
KC1040	KC-1300/1A	Managed Media Converter Center, Power input AC
KC1041	KC-1300/1D	Managed Media Converter Center, Power Input DC
KC1042	KC-1300L/1A	Media Converter Center, Power input AC
KC1043	KC-1300L/1D	Media Converter Center, Power input DC

10/100BASE-TX TO 100BASE-FX MEDIA CONVERTER

- Compact, Plug and Play
- Auto-negotiation 10/100 Mbps and Auto-crossover
- Far End Fault function on FX (fiber) port



Type no.	Supplier no.	Type
KC1080	KFC-200T	Multimode duplex ST
KC1081	KFC-200C	Multimode duplex SC
KC1082	KFC-200-SL2	Singlemode duplex SC

POE EQUIPMENT

MID-SPAN POE INJECTOR

When a network device, like an access point, media converter or IP telephone, needs to be powered through PoE (Power over Ethernet) it is required that the Ethernet switch supports this too. The KW9020 can be used to provide the necessary power on the network cable if this is not the case.

- Plug and play functionality.
- Power shutdown protection.
- Compact design.

Technical specifications

Compliance : KW9021: IEEE802.3af standard, KW9021 IEEE802.3at
Dimension : 50x80x21 mm



Type no.	Supplier no.	Power output
KW9020	KPOE-100	15.4W
KW9021	KPOE-100P	30W

POE-PD-ENABLED 10/100BASE-TX TO 100BASE-FX MEDIA CONVERTERS

The 350 series are designed to convert 10Base-T or 100Base-T signals to/from 100Base-FX fiber signals. They are used to extend the connection distance between two Ethernet devices via fiber cable transparently with no performance degradation. The variety of fiber options supported includes not only multimode, short reach up to long reach single mode fibers, but also Bi-Di WDM and CWDM fiber network applications. Because of 802.3af compliance, the converters can draw the power via Cat.5 cable connected to a PoE PSE switch or mid-span injector. This feature makes the converter ideal for remote areas of a network without AC power outlets

- Smart forwarding which can auto adapt the conversion to get the minimum latency according to
- Link fault pass through between two different media cables
- Transparent conversion for 802.1Q tagged packets
- Far end fault function on the fiber connection



Type no.	Supplier no.	Fiber optic port
KS3050	KC-350-T	1x Multimode duplex ST
KS3051	KC-350-C	1x Multimode duplex SC
KS3052	KC-350-SL2	1x Singlemode duplex SC

POE-PD-ENABLED 10/100BASE-TX TO 100BASE-FX MEDIA CONVERTERS

The 350 series are designed to convert 10Base-T or 100Base-T signals to/from 100Base-FX fiber signals. They are used to extend the connection distance between two Ethernet devices via fiber cable transparently with no performance degradation. The variety of fiber options supported includes not only multimode, short reach up to long reach single mode fibers, but also Bi-Di WDM and CWDM fiber network applications. Because of 802.3af compliance, the converters can draw the power via Cat.5 cable connected to a PoE PSE switch or mid-span injector. This feature makes the converter ideal for remote areas of a network without AC power outlets

- remote loop back test & remote TP link monitoring
- Smart forwarding which can auto adapt the conversion to get the minimum latency according to
- Link fault pass through between two different media cables
- Transparent conversion for 802.1Q tagged packets
- Support being powered by PoE via Cat.5 in addition to typical AC power adapter



Type no.	Supplier no.	Fiber optic port
KS3060	KC-351-T	1x Multimode duplex ST
KS3061	KC-351-C	1x Multimode duplex SC
KS3062	KC-351-SL2	1x Singlemode duplex SC

POE-PD-ENABLED 1000BASE-TX TO 1000BASE-X GIGABIT MEDIA CONVERTERS

The Gigabit media converter is designed to convert 1000Base-T signals to/from 1000Base-X fiber signals. It is used to extend the connection distance between two Gigabit Ethernet devices via fiber cable transparently with no performance degradation. With the SFP (Mini-GBIC) connector design, the media converter not only supports existing variety of multimode and single mode fibers, but also preserves the flexibility to adapt to any change of your fiber network in the future. It also supports center chassis installation with optional power redundancy and management features when a larger fiber network is required. With pre-configured fiber transceivers, the converter also can support Bi-Di WDM and CWDM fiber network applications. Because of 802.3af compliance, the converters can draw the power via Cat.5 cable connected to a PoE PSE switch or mid-span injector. This feature makes the converter ideal for remote areas of a network without AC power outlets.



- Comply with IEEE 802.3ab 1000Base-T, 802.3z 1000Base-SX/LX standard
- 1000Mbps conversion with a minimum and the best latency
- Support transparent conversion of any packet types with no packet length limitation



Type no.	Supplier no.	Fiber optic port
KS3070	KGC-352-SX	1x Multimode duplex SC (SFP)
KS3071	KGC-352-LX	1x Singlemode duplex SC (SFP)

MANAGED 10/100/1000BASE-T TO DUAL-SPEED FIBER GIGABIT MEDIA CONVERTER (WITH POE+)

Tri-speed 10/100/1000Mbps copper to dual-speed 100/1000Mbps fiber conversion.

- Web-based and SNMP configuration management
- Support Jumbo frame conversion
- Support IGMP snooping
- (depends on model)



Type no.	Supplier no.	Type
KS3075	KGC-320-SX	without PoE support, fiber port multimode duplex LC
KS3076	KGC-320-LX	without PoE support, fiber port singlemode duplex LC
KS3084	KGC-320-HP	PoE+ PSE support, SFP port
KS3085	KGC-320-HP-SX	PoE+ PSE support, Fiberport multimode duplex LC (SFP)
KS3086	KGC-320-HP-LX	PoE+ PSE support, Fiberport singlemode duplex LC (SFP)

MODULAR 8-PORT MIDSPAN POE INJECTOR

Instead of replacing switches to PoE compatible switches this PoE injector can be used to add PoE to multiple Ethernet connections. The PoE injector can easily be mounted in a server or network cabinet with the separate available mounting brackets. Based on the number of power modules in this PoE injector, it can be used in situations with different power requirements.

- Hot-plug support.
- Cost effective modular system.
- PoE shut down protection.
- Full IEEE802.3af compliant.



Technical specifications

Network compatibility	: Ethernet, Fast Ethernet, Gigabit Ethernet
Network in	: 8x shielded RJ-45
Network out	: 8x shielded RJ-45
Power in	: 1x C14
Measurements	: 238x190x43 mm

Type no.	Supplier no.	Power modules
KW9081	KPOE-800-1P	1
KW9082	KPOE-800-2P	2



POE EQUIPMENT

OPTIONAL POWER MODULE FOR MODULAR 8-PORT MIDSPAN POE INJECTOR

Expand the power supply capabilities of a modular 8-port midspan PoE injector with only one power module installed.



Type no.	Supplier no.	Power output
KW9080	KPOE-800P60W	60W

19" MOUNTING BRACKET FOR MODULAR 8-PORT MIDSPAN POE INJECTOR

Mount either one or two (depending on the bracket model) modular 8-port midspan PoE injector(s) in a 1U space of a network- or server cabinet.

Technical specifications

Bracket height : 1U



Type no.	Supplier no.
KW9083	KPOE-800-BRACKET1 1
KW9084	KPOE-800-BRACKET2 2

INDUSTRIAL NETWORK PRODUCTS

10/100 UNMANAGED SWITCH

Unmanaged switch with 10/100Mbps copper ports for Ethernet and Fast Ethernet. With the featured auto-negotiation function, the switch can detect and configure the connection speed and duplex automatically. The switch also provides auto MDI/MDI-X function, which can detect the connected cable and switch the transmission wire pair and receiving pair automatically. This auto-crossover function can simplify the type of network cables used.

- Wide operating temperature range for critical environment.
- Industrial-rated Emission and Immunity performance.
- Provide two power input types to meet more application needs.

Technical specifications

IEEE Standard : IEEE 802.3 10BASE-T, IEEE 802.3u 100BASE-TX std.
Dimensions : 48x80x95 mm
Mounting : DIN-Rail
Power Supply : 7 - 30V, DC
Operating temperature : -35 ~ +70 °C



Type no.	Supplier no.	LAN ports
KS3000	KFS-0540	5 x 10/100 Mbps, RJ-45
KS3001	KFS-0840	8 x 10/100 Mbps, RJ-45
KS3002	KFS-1640-L	16 x 10/100 Mbps, RJ-45

FAST ETHERNET SWITCHES

KSD-800 is an 8-port switch designed with the capability of taking wider range of power input and environmental temperature. In addition to the 8x 10/100Mbps ports for client groups, it has an 100Mbps Fiber port for remote network connection. With many unique characteristics, KSD-800 is the ideal solution for environmental critical projects where stability is the #1 priority.

- Supports extended temperature range.
- Fiber ports support 'Far end Fault' to prevent data loss.
- Suitable for DIN-Rail and wall mounting.
- Very reliable.

Technical specifications

Speed	: 10/100 Mbps
Power supply	: +7~30V DC, not supplied
Dimension	: 140x106x40 mm mm
TP Ports	: STP RJ-45, auto negotiation, auto-MDI/MDI-X
Category UTP	: CAT5E



Type no.	Supplier no.	Number of ports
KS3010	KSD-800	8 twisted pair
KS3012	KSD-800-IT	7 twisted pair + 1 x ST MM
KS3014	KSD-800-1C	7 twisted pair + 1 x SC MM
KS3016	KSD-800-1SL2	7 twisted pair + 1 x SC SM

10/100 UNMANAGED SWITCH WITH POE

The switches are 5-port Fast Ethernet switches which are featured with four copper ports and one combo port. The combo port comes with one RJ-45 and one SFP slot. The SFP slot can be mounted with a fiber transceiver optionally to support a fiber connection.

The switch configured with PoE function on Port 1 to Port 4.



Technical specifications

LAN Ports	: 4 x 10/100 Mbps, RJ-45 + 1x combo RJ-45/SFP
Mounting	: DIN-Rail
Power Supply	: 6 - 57 VDC
Operating temperature	: -20 ~70 °C



Type no.	Supplier no.	Type
KS3003	KSD-541P	With PoE
KS3004	KSD-541-HP	With PoE+
KS3005	KSD-541	Without PoE

MANAGED FAST ETHERNET LAYER 2 SWITCHES

The KSD800M switch is an industrial rated managed DIN rail switch, which is capable to operate in a more critical environment where temperature and power fluctuates at wider range. Additionally, KSD-800M offers two power input options, either AC-DC power adapter or via the screwed terminator block. Special features, including VLAN, QoS, and Port Control are configurable via SNMP, Telnet, web, and event traps remote management. All these designs are aimed to provide reliable network service and meeting your projects special requirements.

- Supports extended ambient temperatures of -20 °C to 70 °C.
- Fiber ports support 'Far end Fault' to prevent data loss.
- Supports VLAN, QoS and Port Control.
- Management via SNMP, Telnet, event traps and webinterface.
- Suitable for DIN-Rail and wall mounting.

Technical specifications

Speed	: 10/100 Mbps
Power supply	: +7~30V DC
Dimension	: 140x106x40 mm mm
TP Ports	: STP RJ-45, auto-negotiation, auto-MDI/MDI-X
Category UTP	: CAT5E



Type no.	Supplier no.	Number of ports
KS3020	KSD-800M	8 twisted pair
KS3022	KSD-800M-1T	7 twisted pair + 1 x ST MM
KS3024	KSD-800M-1C	7 twisted pair + 1 x SC MM
KS3026	KSD-800M-1SL2	7 twisted pair + 1 x SC SM

INDUSTRIAL NETWORK PRODUCTS

INDUSTRIAL IP66/IP67 FAST ETHERNET L2 SWITCH

KTI's KGS-0860 IP66/67 switch series offers a diverse range of managed Ethernet switches with the ruggedized hardware design for protection against strong jets of water and temporary immersion in water. The series includes a variety of 8-ports switches featured with different configurations composed of Fast Ethernet ports and Gigabit Ethernet ports. The available port types are copper port, fiber optical port and combo port with dual-media support (copper and fiber optical).

In addition to standard direct power input, the series provides optional solution that the switch can be powered over network cable instead of direct power input. This way called "Power over Ethernet" allows the switch receives electric power along with data from the connected network cable and the switch can be installed in place where power is not present. Not only PoE powered switch solutions the series also offers PoE power sourcing switches which can deliver power to other switches over the connected cables. It provides a complete and diversified solutions for PoE deployment with the IP66/67 switches.

Designed to operate reliably in harsh industrial environments the series provides a high level of immunity to electromagnetic interference and heavy electrical surges usually found in industrial environments. An operating temperature range of -30°C to +70°C coupled with IP66/67 rated waterproof design allows the switches to be installed in any locations virtually.

To meet requirements for advanced applications, the switch series provides advanced layer 2 network functions, a variety of management interfaces enhanced with security features, and a full array of useful functions for high network availability and manageability. Featured with the ruggedized hardware design, the KGS-0860 series provides ideal solutions for any harsh environments, such as strong vibrations, extreme temperatures and wet or dusty conditions.

- Support IGMP snooping function
- Waterproof enclosure design, LAN port connectors and power connector
- Port mirroring function
- Support jumbo frame up to 9.6K bytes
- Support 802.1w RSTP, 8021D STP and MSTP for preventing loop connection
- Support redundant ring applications with enhanced industrial RSTP



Type no.	Supplier no.	Type
KS3115	KGS-0841-W	8x 10/100 Fast Ethernet ports

INDUSTRIAL GIGABIT ETHERNET LAYER 2 SWITCH

Industrial Gigabit Ethernet switch with 5x 10/100/1000 Mbps ports and Gigabit SFP slot. Industrial rated wide temperature range and immunity performance.

Be aware this product will be delivered without SFP module. You can order this separately.

- Can be mounted on Panel, DIN-Rail or wall.
- Functions within very large temperature range.
- IGMP snooping support.
- Compact design.



Technical specifications

Speed	: 10/100/1000 Mbps
Power supply	: External
Category UTP	: CAT5E
Norm	: IEEE 802.3, 802.3u, 802.3ab, 802.3x, 802.1Q
Material housing	: Metal



Type no.	Supplier no.	Number of ports
KS3100	KGD-600	5

INDUSTRIAL 8-PORT L2 GIGABIT ETHERNET SWITCH WITH 2 SFP AND 4 POE PSE PORTS

- In-band web and SNMP management interfaces
- port mirroring function
- Supports 802.1w RSTP, 8021D STP and MSTP
- Supports SFP with Digital Diagnostic Monitoring (DDM)
- Provides optional four 802.3af-compliant PoE PSE ports



Technical specifications

Lan ports	: 6x 10/100/1000 Mbps RJ-45.2x SFP
Mini-GBIC SFP	: Gigabit 1000Base-x compliant SFP connector

Type no.	Supplier no.	PoE
KS3006	KGD-802-B	No
KS3007	KGD-802-B-P	PoE



INDUSTRIAL MEDIA CONVERTERS TP TO FIBER

Industrial media converters TP to fiber

These industrial media converters offer industrial reliability at transforming copper to fiber Ethernet. These industrial media converters can not only convert the media type, but also the speed of the connection. By supporting the 'link fault pass through' and 'far end fault' functions the media converters can report signal loss and connection problems, this will prevent data loss. With the wide configuration possibilities these converters fits always to the required application. It is provided including DIN rail mounting bracket.

KC 1030 - Industrial media converter twisted, pair to multimode ST fiber
 KC 1032 - Industrial media converter twisted, pair to multimode SC fiber
 KC 1034 - Plane mounting bracket
 KC 1036 - Power supply: Primary 230V AC 50Hz, secondary 7.5V DC, 1A

- Extended configuration options.
- Including DIN Rail mounting bracket.



Technical specifications

Smart-forward method	: 10M>100M Store-and-Forward, 100M>100M Direct conversion
Transparant conversion	: Standard IEEE 802.3 Ethernet frames, IEEE 802.1Q frames
TP Port	: STP RJ-45, auto MDI/MDI-X crossover, auto-negotiation, full and half duplex
Wavelength	: 1310 nM
Cables	: MMF 50/125 um, 62.5/125 um fiber cable
FX Parameters	: Tx power: -19 tot -14 dBm, Rx input power: -14 dBm min.-34 dBm max.
Mounting	: DIN Rail, Plane
Power	: +7V~30V DC, not supplied
Power consumption	: 2.6 W Max
Ambiant temperature	: -10 °C to 60 °C, 5%-95%, non-condensing



Type no.	Supplier no.	Kind
KC1030	KCD-300-T	MM-ST
KC1032	KCD-300-C	MM-SC

INDUSTRIAL COMPACT MEDIA CONVERTERS TP TO FIBER

Technical specifications

Conversion	: 10BASE/T to 100BASE/FX, 100BASE/TX to 10/100BASE/T Auto to 1000BASE/FX
Conversion Methodes	: Cut-through para 100 Mbps a 100 Mbps con la menor latencia, Store-and-forward para conversion 10 Mbps a 100 Mbps, Auto mode-switching.
Copper port	: IEEE 802.3 10BASE-T, IEEE 802.3u 100BASE-TX shielded RJ-45 jacks with Auto MDI/MDI/X detection and Auto negotiation for speed and duplex.
Fiber Port	: IEEE 802.3 100BASE/FX compliant, Forced 1000 Mbps, Full duplex, Far end fault function.
Packet size	: Up to 1536 bytes for 10 Mbps to 100 Mbps conversion and no limit for 100 Mbps to 100 Mbps conversion.
Mounting	: DIN Rail
Power	: +4.5 V~50V DC, not supplied



Type no.	Supplier no.	Type
KC1070	KC1070	Multimode duplex ST 62.5/125 um, 50/125 um
KC1071	KC1071	Multimode duplex SC 62.5/125 um, 50/125 um
KC1072	KC1072	Singlemode duplex SC9/125 um

ACCESSORIES FOR INDUSTRIAL MEDIA CONVERTER

Accessoires for Industrial media converter

Technical specifications

Suitable for : KC1030, KC1032



Type no.	Supplier no.	Type
KC1034	KCD-3PB	Bracket
KC1037	PA-7.5V-1.2A	Poweradapter 7.5 V / 1.2 A

INDUSTRIAL NETWORK PRODUCTS

INDUSTRIAL 3-PORTS L2 FAST ETHERNET MEDIA CONVERTER SWITCH

The industrial rated KSD-103 Fast Ethernet switch series supports three switching-base segment communications and benefit the following applications and make fiber deployment easier:

- Copper to fiber bridging converter
- Multimode fiber to single mode fiber bridging converter
- Fiber cable extender
- Cascaded fiber networking

Technical specifications

Ambiant Temperature : -20 °C to 70 °C

Type no.	Supplier no.	Fiber optic port(s)
KS3030	KSD-103-A-T	1 x Multimode ST duplex
KS3031	KSD-103-A-C	1 x Multimode SC duplex
KS3032	KSD-103-A-SL2	1 x Singlemode SC duplex
KS3033	KSD-103-B-C1SL2	1 x Multimode SC duplex and 1 x Singlemode SC duplex



INDUSTRIAL 1000BASE-T TO 1000BASE-X GIGABIT MEDIA CONVERTER

- Plug and play design with no configuration setting
- Wide operating temperature range for temperature critical environment
- Provide two power input types to meet more application needs
- Support DIN-Rail mounting and panel mounting
- Accept wide power input voltage range for application flexibility
- Industrial-rated Emission and Immunity performance

Technical specifications

LAN port : 1000 Mbps RJ-45
Ambiant Temperature : -20 °C to 70 °C

Type no.	Supplier no.	Fiber optic port
KS3040	KCD-400-SX	1x Multimode duplex LC (SFP)
KS3041	KCD-400-LX	1x Multimode duplex of singlemode LC (SFP)



RS-232 CONVERTER

The converter is designed to provide the most versatile connection possible between two RS-232 serial equipment using fiber optic cable. It allows any two pieces of serial equipment to communicate full-duplex over typical duplex fibers, or over optional single fiber up to 20km. The converter supports transparent conversion for not only RS-232 data lines, but also all RS-232 control signals. It also supports all RS-232 baud rates with no need for user configuration. The Din-rail mountable design makes it ideal for industrial cabinets and enclosures.

- Also suitable for control signals.
- Support for all RS-232 baudrates.

Technical specifications

FO Port : SC
Model : DIN Rail
Power supply : External
Designed for : Communication between RS232 serial devices full duplex over fiber cable

Type no.	Supplier no.	Input interface
KC1100	KSC-200C	D-Sub 9-pin (female)



INDUSTRIAL IEEE 802.3AT HIGH POWER POE+ SPLITTER

KTI Network's KPW-T2P25 is a high power PoE splitter which integrates Power over Ethernet (PoE) technology to PoE incapable network device by just using a single Cat.5 cable for both power and data transaction. The splitter is equipped with DIP SW that allows user to select one from five different classes for demanding power from a remote PoE switched port or mid-span injector. This feature supports efficient power management at the PSE side. It supports Type 1 PSE for power up to 13 Watts and Type 2 PSE for power up to 30 Watts. For industrial applications, the splitter is also equipped with optional brackets for Din-Rail mounting and panel mounting. To enhance application safety, the splitter is featured short-circuit protection, low voltage lock out, inrush current limit and thermal protection.

There are optional models with different DC output voltages, 5V/9V/12V.

- IEEE 802.3at and 802.3af compliance
- Regulated DC power output
- Power class selection DIP for demanding power from PSE



Type no.	Supplier no.	Type
KS3037	PMB-303	Panel mounting bracket
KS3034	KPW-T2P25-5V	High Power PoE splitter 5 V DC
KS3035	KPW-T2P25-9V	High Power PoE splitter 9 V DC
KS3036	KPW-T2P25-12V	High Power PoE splitter 12 V DC

DIN-RAIL POWER SUPPLY 12V/1.8 A

- Protected against short circuits, overload and over voltage.
- UL60601-1/IEC60601-1/EN60601-1 safety approved internal power module.
- IEC60950-1 safety approved for power supply.

Technical specifications

Output voltage	: 12 V
Input Voltage	: 110 ~ 240 VAC
Input connectors	: IEC320 C14 socket, terminal block
Output connectors	: Terminal block 4P (2 pair): Vout+ / Vout- / Vout+ / Vout-, DC plug
Operating temperature	: -40 ~ +70 °C



Type no.	Supplier no.	Output current
KS3912	KPW-2012-D-E	1.80A

POWER SUPPLY FOR POE/POE+ APPLICATIONS, 1U RACK MOUNTABLE

External power supply for typical PoE & high power PoE+ switches or systems
 IGeneral power supply for critical temperature environments
 IGeneral power supply for 19" rack-mount systems

- Protections: Short circuit / Overload / Over voltage / Over temperature
- High efficiency up to 89%

Technical specifications

AC input voltage	: 100 ~ 264VAC, 50/60Hz
DC output	: +48VDC, +52VDC, +54VDC, depends on model.
Temperature range	: -40 ~ +70 °C



Type no.	Supplier no.	Type
KS3914	KPW-300T-48	48 V DC / 300 W
KS3915	KPW-300T-52	52 V DC / 300 W
KS3916	KPW1000T-48	48 V DC / 1000 W
KS3917	KPW1000T-52	52 V DC / 1000 W

PCI NETWORK CARD

KTI GIGABIT SFP SLOT PCI CARD

The ideal adapter at places where high network speeds need to be realised. By the support of both the 32 and 64-bit PCI interface according various PCI standards, this network adapter can be universally used. Easy to install via the Plug & Play installation. Supports PCI 2.2 Wake-On-Lan for starting a PC remotely.

- Supports both 32-bit and 64-bit PCI interface
- Easy to install



Technical specifications

Bracket format	: Normal
Interface	: PCI 2.3
Internal connectors	: None
OS support	: Linux, Windows 2000 / 2003 / XP/ Vista/7 (32 & 64 bit), Netware server
Speed	: 1000



Type no.	Supplier no.	External connectors
KN1054	KG-500F	Depends on SFP module

ANTENNAS

OMNI ANTENNE 7 DBI

Antenne for both 11 Mbps and 54 Mbps access points. If your access point contains an external antenna connection, you can expand the reach of the transmission.

- Can be used indoor and outdoor.

Technical specifications

Lineair	: V or H
Frequency	: 2400-2483.5 MHz
Impedancy	: 50 Ohm
VSWR	: < 2.0
Max. power	: 20 Watt
Connection	: N Female
Diameter	: 20 mm
Length	: 400 mm



Type no.	Supplier no.	Gain
KW9001	OE-001	7 dBi

PANEL ANTENNE 12 DBI

Antenne for both 11 Mbps and 54 Mbps access points. If your access point contains an external antenna connection, you can expand the reach of the transmission. This antenna is direction sensitive.

- Can be used indoor and outdoor.

Technical specifications

Lineair	: V or H
Frequency	: 2400-2483.5 MHz
Impedancy	: 50 Ohm
VSWR	: < 2.0
Max. power	: 10 W
Connection	: N Female
Dimension	: 166x140x30 mm



Type no.	Supplier no.	Gain
KW9002	PA-M01	12 dBi

OMNI DIRECTIONAL ANTENNA 12DBI

By the strengthening of 12 dBi the range of your access point increases considerably in all horizontal directions. The antenna can easily be connected to each wireless device with an external antenna connection. This antenna is suitable for all 802.11b/g wireless networks and associated "turbo" alternatives.

Attention! Maximum emission should not exceed 100 mW.

- Can be used indoor and outdoor.

Technical specifications

Polarization	: Vertical
Frequency	: 2400-2483.5 MHz
Impedancy	: 50 OHm
VSWR	: < 2.0
Connection	: N-type female
Gain	: 10 W
Dimension	: 30 x 960 mm
Weight	: 440 g
Ambiant temperature	: -30 °C to 60 °C



Type no.	Supplier no.	Gain
KW9006	OE-003	12 dBi

YAGI ANTENNA 12DBI

By the strengthening of 12 dBi the range of your access point increases considerably in one direction. With this antenna it is possible the range of your access point in one stipulated considerably direction to increase. The antenna can easily be connected to each wireless device with an external antenna connection. This antenna is suitable for all 802.11b/g wireless networks and associated "turbo" alternatives.

Attention! Maximum emission should not exceed 100 mW

- Can be used in and outdoor.

Technical specifications

Lineair	: V or H
Frequency	: 2400-2483.5 MHz
Impedancy	: 50 OHm
VSWR	: < 1.5
Connection	: N-type female with cable
Max. power	: 50 Watt
Dimension	: 76x446 mm
Weight	: 1040 g
Ambiant temperature	: -30 to 60 °C



Type no.	Supplier no.	Gain
KW9004	YA-R03	12 dBi

WIFI DOME ANTENNE

This antenna has a magnet foot and strenghtens the signal of your wireless network with 5 dBi. The antenna isn't direction sensitive.

Technical specifications

Cable length	: 1.5 m
Connector	: Reverse SMA male
Frequency range	: 2.5 - 2.7 GHz
Temperature range	: -30 ~ +60 °C



Type no.	Supplier no.	Gain
KW9005	CAW-01500-01-9	5 dBi

Eminent SOHO Networking

With its networking products, Eminent focuses on the home and small business segment. Eminent products are designed for everyday use where reliability and ease of installation are paramount. Eminent has its own support desk for professional resellers and consumers. Eminent networking products come with a 5 year warranty. The range consists of network adapters, switches and routers.



MINI NETWORK SWITCH 10/100 MBPS

The Eminent 5 Port Network Switch allows you to set up a network fast and easy. The network switch has 5 independent 10/100 Mbps ports supporting full-wire speed transmissions in half or full duplex modes. Do you wish to offer quick network or Internet access to all users? The network switch achieves optimal performance, thanks to the N-Way auto-negotiation function. The network switch can automatically choose the correct speed. Cross-over detection ensures that users can connect the switch to another switch or hub without needing to connect a crossover cable. Perfect for setting up or extending your network.



- Automatic cross-over detection
- Power supply included
- Power LED

Technical specifications

Standards : IEEE 802.3 10 Base T, IEEE 802.3u, 100 Base TX
 Power : 9V DC, 0.6 A



Type no.	Supplier no.	Number of ports
EM4405	EM4405	5
EM4408	EM4408	8

EMINENT 10/100 MBPS DESKTOP SWITCH BUSINESS

Create a home network for sharing files and Internet!

- Power supply included.
- LED on each port for link and activity.
- Easy installation.
- 5 Year warranty.
- Accessible helpdesk.



Technical specifications

Type : Nway Desktop Switch 10/100 Mbps
 Ports : 5/8x 10/100 Mbps
 Detection : Automatic cross-over
 Protocol : CSMA/CD Auto-MDIX
 Transfer Rate : 100/200 Mbps, 802.3 10Base-T, 802.3u 100Base-TX



Type no.	Supplier no.	Number of ports
EM1030	EM1030	5
EM1034	EM1034	8

EMINENT 19" NETWORK SWITCH 10/100 MBPS BUSINESS

Create a home network for sharing files and Internet!

- Status LED for every port with status of connection and activity.
- Power supply included.
- Easy installation.
- 5 Year warranty.
- Accessible helpdesk.



Technical specifications

Type : Network switch
 Ports : 16/24x 10/100 Mbps ports
 Detection : Automatic cross-over



Type no.	Supplier no.	Number of ports
EM4416	EM4416	16
EM4418	EM4418	24

GIGABIT NETWORK SWITCH

Due to the constantly increasing demand for bandwidth thanks to audio and video applications, internet web-sites full off interactive content and internal applications, the demand for high-speed networking solution rises as well. Eminent offers an attractive way to prepare your computer for the future in networking.

- 5x 100/1000Mbps ports
- Automatic cross-over detection
- Power supply included
- LED on each port for link, activity and speed



Technical specifications

Data transfer rate : 10/100/1000
Power : 9V DC, 0.6A



Type no.	Supplier no.	Number of ports
EM4441	EM4441	5x 10/100/1000 mbps ports
EM4442	EM4442	8x 10/100/1000 mbps ports

NETWORK MEDIA CONVERTERS

TWISTED PAIR / FIBER MEDIA CONVERTER

Converts Ethernet over copper to Ethernet over fiber.

Technical specifications

TX port : 10Base-T, 100Base-TX, RJ-45 shielded
FX port : 100Base-FX, far end fault function
FX cables : MMF -62.5/125 um, 50/125 um (max. 2 km)
IEEE Standard : 802.3, 802.3u
Dimension : 108x72.5x23 mm
Power supply : +5 V~+12V DC (supplied 7.5 V DC 1 A)



Type no.	Supplier no.	Output connector
EM4001	EM4001	Multimode duplex ST 62.5/125 um, 50/125 um
EM4000	EM4000	Multimode duplex SC 62.5/125 um, 50/125 um

ROUTERS

EMINENT WIRELESS 300N ROUTER

With the Eminent EM4544 Wireless 300N Router you can share your Internet connection at high speed (up to 300 Mbps). This powerful wireless N router with 2 antennas will increase your wireless range significantly. Connect multiple users, wireless or wired. Enjoy the speed of a wireless network and share your Internet connection easily. Thanks to the blazing speed, the wireless router is perfect for playing online games and distributing videos, music and photos.

- High performance wireless connection up to 300Mbps
- Advanced wireless security: firewall, WEP, WPA, WPA2
- Two antennas for optimal reach and higher data transfer
- Perfectly for online gaming and transferring music, videos and photos



Technical specifications

Speed : 300 I/s
Security : Firewall, WEP, WPA, WPA2
Antenna : 2x non detachable 4db antennas
Ports : 4x LAN 100 Mbps, 1x WAN 100 Mbps



Type no.	Supplier no.	Type
EM4544	EM4544	Wireless 300N Router

ROUTERS

EMINENT WIRELESS GIGABIT ROUTER 300N

With the Eminent EM4571 Gigabit 300N Router you can share your Internet connection at the highest possible speed. This powerful wireless N router will increase your wireless range significantly. Connect multiple users, wireless or wired. Thanks to the ultra-fast WAN port, this router is ideal for high-speed cable or fiber Internet, allowing rates of up to 150 Mbps.

- For a high-speed wired and wireless network
- Advanced wireless security: firewall, WEP, WPA, WPA2
- Three antennas for optimal reach and higher data transfer
- Perfectly for online gaming and transferring music, videos and photos

Technical specifications

Ports : 4x LAN 1000 Mbps, 1x WAN 150 Mbps
Security : WEP, WPA, WPA2, wireless
Antennas : 3x non-detachable 4dBi antennas



Type no.	Supplier no.	Type
EM4571	EM4571	Wireless 300N Gigabit Router

EMINENT CONCURRENT DUAL BAND 600N GIGABIT ROUTER

The Eminent EM4585 Concurrent Dual Band Gigabit Router with four antennas shares your Internet connection at the highest speed. Use the 2.4Ghz and 5Ghz band simultaneously to maximize the throughput and avoid interferences. The high performance WiFi network is perfect for online gaming and transferring music, videos and photos. Thanks to the Gigabit WAN port, this router is ideal for high-speed cable and fiber Internet. Create a guest network and share your Internet connection with your family and friends.

- Wireless Dual Band Router 300Mbps+300Mbps, Gigabit LAN and access point
- Double bandwidth to avoid interferences and maximizing the wireless coverage
- Four 4dBi antennas for higher data transfer
- Separated antenna system: use the 2.4Ghz and 5Ghz band simultaneously
- Gigabit WAN port: Perfect for fast cable or fiber-based Internet

Technical specifications

System : Dual band system, simultaneous on 2.4GHz and 5GHz
Ports : 4 LAN Gigabit ports, 1 WAN Gigabit port
Security : WEP, WPA and WPA2 wireless security, Firewall with Intrusion Detection and Stateful Packet Inspection
Antennas : 4 x non-detachable 4dBi antennas



Type no.	Supplier no.	Type
EM4585	EM4585	Dual Band Gigabit Router

EMINENT WIFI REPEATER PRO

The Eminent EM4591 Universal WiFi-repeater increases your wireless network coverage. The Repeater has a WPS button which makes the setup very easy, without complicated settings in the router or repeater. By the built-in power connector you can plug the WiFi-repeater directly into the power outlet. This is the easiest way to increase wireless network coverage in your home or office. The built-in power plug allows placement of the EM4591 directly into the power socket. The WiFi signal indicator of the EM4591 indicates the best place to locate the repeater.

- The Wi-Fi signal indicator indicates the best place to locate the repeater
- Easy setup with WPS function
- Works with any wireless router
- Wireless repeater and Access-point

Technical specifications

Standard : IEEE 802.11n, IEEE 802.11g, IEEE 802.11b
Security : 64/128/152-bit WEP, complies with 128 bit WPA (TKIP/AES)



Type no.	Supplier no.	Type
EM4591	EM4591	Universal Wifi-repeater with WPS

EMINENT WIFI TRAVEL ROUTER

Create a WiFi hotspot and share your Internet connection at your hotel room. With the EM4630 WiFi Travel Router you can create a WiFi hotspot by yourself and share this connection with other wireless devices. At the same time it performs the role of a WiFi repeater and has a 2.1A USB-port for charging your smartphone or tablet. The WiFi Travel Router is powered via the power socket. The EM4630 also functions as a travel adapter. You will always have the right plug along with you.

- Create a WiFi Hotspot and share your internet connection with multiple tablets and smartphones
- With USB-port for charging your tablet and smartphone
- Wireless router, repeater and access-point
- Wireless connection up to 150Mbps
- Suitable for Europe, USA/China, Australia/New Zealand and United Kingdom



Technical specifications

Standard : IEEE 802.11n



Type no.	Supplier no.	Type
EM4630	EM4630	Wifi Travel router

USB NETWORK ADAPTERS

WIRELESS USB ADAPTER 150N

Do you wish to connect your desktop computer or notebook to your own wireless home network, your company network or another wireless network? The Eminent EM4575 Wireless 150N USB Adapter allows you to access a wireless network. Thanks to the high speed of 11N networks, copying large files and streaming video is now an easy job.

Technical specifications

Standard : 150 I/s
 Wireless security : WEP, WPA and WPA2
 Interface : USB 2.0



Type no.	Supplier no.	Type
EM4575	EM4575	Wireless USB Adapter

EMINENT WIRELESS USB ADAPTER 300N

Would you like to connect your computer or notebook with your own wireless home network, your company network or another network? The Eminent EM4579 wireless 300N USB adapter creates access to a wireless network. Thanks to the high speed of the 11N network, copying of large files and videostreaming is done quickly.

- Wireless network adapter for desktop computers and notebooks
- Perfect for Internet access and video/audio streaming at a blazing speed
- Including WiFi Protected Setup button to set wireless security: WEP, WPA and WPA2
- Enjoy the speed of a wireless N network



Technical specifications

Interface : USB 2.0
 Standard : Wireless 300 Mbps
 Wireless security : WEP, WPA and WPA2



Type no.	Supplier no.	Type
EM4579	EM4579	Wireless USB Adapter

USB NETWORK ADAPTERS

EMINENT 300MBPS WIRELESS USB ADAPTER WITH ANTENNA

Do you wish to connect your desktop computer or notebook to your own wireless home network, your company network or your friends wireless computer? The EM4577 Wireless USB Adapter allows you to access a wireless network. Thanks to the high speed of 300 Mbps, copying big files and video files is from now on an easy job. The external antenna ensures optimal performance on any location!

- Wireless network adapter for desktop computers and notebooks
- External 2dBi antenna for extended range
- Internet access and video/audio streaming at a blazing speed (up to 300 Mbps)
- Advanced wireless security: WEP, WPA and WPA2
- Especially suited for connection with Eminent 300N Wireless Routers

Technical specifications

Interface	: USB 2.0
Antenna	: Dual 4dBi external antenna's
Standard	: Wireless 300Mbps (Draft-N), backwards compatible with 54Mbps and 11Mbps
Complies with	: IEEE 802.11n and IEEE 802.11 g/b/a

Type no.	Supplier no.	Type
EM4577	EM4577	Wireless USB Adapter



EMINENT DUAL BAND WIRELESS USB ADAPTER

Do you wish to connect your desktop computer or notebook to your own wireless home network, your company network or your friends wireless computer? The EM4586 Dual band wireless USB Adapter allows you to access a wireless network. Thanks to the high speed of 300 Mbps, copying big files and video files is from now on an easy job. The dual external 4dBi antennas ensure optimal performance on any location.

- Wireless network adapter for desktop computers and notebooks
- Dual band; connect to both 2.4GHz and 5GHz networks
- Dual 4dBi external antennas for extended range
- Internet access and video/audio streaming at a blazing speed (up to 300 Mbps)
- Advanced wireless security: WEP, WPA/WPA2, WPA-PSK/WPA2-PSK (TKIP/AES)

Technical specifications

Interface	: USB 2.0
Antenna	: Dual 4dBi external antenna's
Standard	: Dual band 2.4GHz / 5GHz Wireless 300Mbps
Complies with	: IEEE 802.11n and IEEE 802.11 g/b/a

Type no.	Supplier no.	Type
EM4586	EM4586	Dual band Wireless USB Adapter



EMINENT 10/100 MBPS USB NETWORK ADAPTER

Easily provide your PC with a 10/100 Mbps network connection!

- Connect your pc or notebook to an existing network
- 1-Port RJ45 networking adapter
- Compliant with 10/100Mbps networks
- Compliant with USB 2.0 specifications

Technical specifications

Interface	: USB 2.0
External connectors	: 1x RJ-45

Type no.	Supplier no.	Speed
EM1010	EM1010	10/100Mb/s



EMINENT USB 3.0 GIGABIT NETWORKING ADAPTER

Is the network port from your desktop, laptop or netbook broken? You don't have a network port on your computer? The Eminent EM1017 USB 3.0 Gigabit Networking Adapter is the solution to get back online again. Even upgrade your existing 10/100 Mbps network to a Gigabit network via the USB 3.0 port. Install it easily on all common operating systems

- Upgrade your PC or Laptop to 1 Gigabit network connection by using your USB 3.0 port
- Connect your pc or notebook to an existing network
- 1-Port RJ45 networking adapter
- Compliant with 10/100/1000Mbps networks

Technical specifications

Interface : USB 3.0
External connectors : 1x RJ-45



Type no.	Supplier no.	Speed
EM1017	EM1017	10/100/1000

PCI NETWORK ADAPTERS

GIGABIT PCI NETWORK INTERFACE CARD

10/100/1000 Mbps PCI network adapter, the most easy way to provide your PC with a Gigabit Ethernet connection!

- Future-ready the easy way
- Data transfer speeds up to 1000Mbps
- Extremely reliable and stable

Technical specifications

Interface : PCI
External connectors : 1x RJ-45
Bracket format : Normal



Type no.	Supplier no.	Speed
EM4028	EM4028	10 / 100 / 1000 mbps

WIFI TRAVEL READERS

EMINENT WIFI TRAVEL READER FOR APPLE DEVICES

Watch at home or on the go videos and photos wireless at your iPad, iPod or iPhone via the EM4610 WiFi Travel Reader. You simply have to connect your USB-stick or SD-card to the WiFi Travel Reader. This compact WiFi Travel Reader also functions as a WiFi hotspot and WiFi repeater. You can use the EM4610 everywhere by means of the internal battery.

- Share your files wireless from your SD-card or USB-stick
- Create a WiFi hotspot by yourself and share your Internet connection
- Free iOS app for iPad, iPod and iPhone
- Portable through the build-in rechargeable battery

Technical specifications

Standard : IEEE 802.11 b/g/n



Type no.	Supplier no.	Type
EM4610	EM4610	Wifi Travel reader Apple devices

WIFI TRAVEL READER

EMINENT WIFI TRAVEL READER PRO

Watch at home or on the go videos and photos wirelessly at your tablet or smartphone via the Android/Apple app. Simply connect your USB-stick or SD-card to the EM4620 WiFi Travel Reader Pro. This compact WiFi Travel Reader Pro also functions as a WiFi hotspot and WiFi repeater. Use the EM4620 everywhere because of its internal battery. This battery operates as a power bank too, to charge your smartphone



- Share your files wirelessly from your SD card or USB stick with other Android/Apple devices
- Portable by the built-in rechargeable battery
- Internal Power Bank: charge the battery of your smartphone/tablet or mp3 player
- Wireless router, repeater and access point
- Free Android and Apple app

Technical specifications

Standard : IEEE 802.11b/g/n



Type no.	Supplier no.	Type
EM4620	EM4620	Wifi Travel reader Apple devices

NETWORK OVER MAINS

MINI POWERLINE ADAPTER 500MBPS STARTER KIT

The Eminent EM8031 Mini Powerline Adapter 500Mbps Starter Kit is the ideal extension of your home network. The easiest to connect your laptop, computer, smart tv, media player and game console to your existing internet router. Suited for HD streaming.



EM8031

- Two 500Mbps Mini Powerline Adapters.
- Internet in every room, simply through the wall outlet.
- Stable connection, no hassle with wires.
- Security through 128-Bit AES Link encryption.

Technical specifications

Data transfer : 500 Mbps
Standardization : IEEE802.3 and IEEE802.3u Ethernet



Type no.	Type
EM8031	Set of 2 adapters
EM8030	Single adapter

POWERLINE ADAPTER 500MBPS WITH POWER SOCKET (STARTER KIT)

The EM8033 is a Starter Kit consisting of two EM8032 Powerline Adapters. The Eminent EM8032 Powerline Adapter 500Mbps with power socket is the ideal extension of your home network. The easiest way to connect your laptop, computer, smart tv, media player and game console to your existing internet router. Suited for HD streaming.



EM8033

- Powerline Adapter with power socket (500Mbps)
- Ethernet over existing power lines
- Internet in every room, simply through the wall outlet
- Stable connection, no hassle with wires
- Security through 128-Bit AES Link encryption

Technical specifications

Data transfer : 500 Mbps
Standardization : IEEE802.3 and IEEE802.3u Ethernet



Type no.	Type
EM8033	Set of 2 adapters
EM8032	Single adapter

POWERLINE ADAPTER 500MBPS MET STOPCONTACT STARTER KIT (BELGIUM)

The EM8035 is a Starter Kit consisting of two EM8034 Powerline Adapters.

The Eminent EM8034 Powerline Adapter 500Mbps with power socket is the ideal extension of a home network. The easiest way to connect a laptop, computer, smart tv, media player or game console to an existing internet router. Suited for HD streaming.

- Powerline Adapter with power socket (500Mbps) Kit of two
- Internet in every room, simply through the wall outlet
- Internet in every room, simply through the wall outlet
- Stable connection, no hassle with wires
- Security through 128-Bit AES Link encryption



EM8035

Technical specifications

Data transfer : 500 Mbps
Standardization : IEEE802.3 and IEEE802.3u Ethernet



Type no.	Supplier no.	Type
EM8035	EM8035	Set of 2 adapters
EM8034	EM8034	Single adapter

WIFI POWERLINE ADAPTER

The Eminent EM8036 Powerline Adapter 500Mbps with integrated 300Mbps WiFi is the ideal extension of a home network. The easiest way to connect a laptop, computer, smart tv, media player and game console to an existing internet router. Suited for HD streaming.

- 500Mbps Powerline Adapter with 300Mbps WiFi
- Internet in every room, simply through the wall outlet
- Including 300Mbps WiFi hotspot
- Suited for HD streaming
- Compatible with 200Mbps Powerline AV adapters



Technical specifications

Data transfer : 500 Mbps
Data transfer WiFi : 300 Mbps
Standardization : IEEE802.3 and IEEE802.3u Ethernet



Type no.	Type
EM8036	Single WiFi adapter
EM8037	WiFi adapter and single adapter (EM8036 + EM8030)

3 PORT POWERLINE NETWORKING SWITCH 500MBPS WITH POWER SOCKET

The Eminent EM8038 Powerline Adapter 500Mbps with power socket is the ideal extension of a home network. The easiest way to connect your laptop, computer, smart tv, media player and game console to your existing internet router. Suited for HD streaming.

- 3 Port Powerline Networking Switch
- 500Mbps Powerline Adapter with integrated power socket
- Internet in every room, simply through the wall outlet
- Suited for HD streaming
- Integrated power socket and noise filtering for maximum data speed



Technical specifications

Data transfer speed : 500 Mbps
Standardization : IEEE802.3 and IEEE802.3u Ethernet
Number of ports : 3 x 10/100 Mbps



Type no.	Supplier no.	Type
EM8038	EM8038	Single adapter

PRINT SERVER AND NAS

EMINENT PRINT SERVER AND NETWORK USB HUB

Do you wish to share USB devices with multiple computers in your (wireless) network? The Eminent EM4085 Network USB Hub is the solution for you. The network enabled USB hub creates access to up to four connected USB devices.

- Simultaneously share up to four USB devices over your network
- From now on you need only 1 printer per household
- No need for a powered-on computer to share USB devices
- Plug & play, easy few-seconds installation

Technical specifications

Interface : USB 2.0
Power : DC 5V 2A

Type no.	Supplier no.	Ports
EM4085	EM4085	4



EMINENT MYISHARING NAS

Saving and sharing documents and media files never was so easy. The EM4172 myiSharing Gigabit NAS is THE central point in your home and work environment. Your pictures, videos and music are accessible all over the world with the free Android and IOS app

- 2 bay Gigabit NAS with myiSharing Cloud function
- Central storage for all your documents and media files at home or at the office
- Worldwide easy access with myiSharing Cloud
- Free Android and IOS app
- Share your media via UPnP

Technical specifications

CPU : Dual-core 750MHz
Memory : 128MB DDR2 SDRAM, 256MB NAND flash
Internal hard drive(s) : One or two 3.5" SATA-I, SATA-II or SATA-III hard drives
Capacity hard drive(s) : 80GB - 3TB per HDD

Type no.	Supplier no.	Type
EM4172	EM4172	NAS 2 bay



NETWORK EXTENSION

IP CAMERA EXTENDER

This device is an easy and cheap solution for transmitting an IP camera signal via Coax cable over a distance of maximum 200 metres.

Technical specifications

Connectors : 1x BNC (female), 1x UTP RJ-45 (female)
Max. distance : 200 m
Cable type : Coax (RG59)
Power : Bus powered

Type no.	Supplier no.	Type
SC1050	SC1050	IP Extender Coax



IP TCP/IP EXTENDER

This IP extender enables the transmission of TCP/IP devices over 1.2 km or 1.8 km by using a regular CAT5 cable resp. coax cable. Ideal for situations in which IP video must be sent to installations that are beyond the 100 meters distance limit of Ethernet.

- Long range transmission up to 1.8 km.
- Plug & Play.

Technical specifications

Connections : RJ-45 UTP (female)
Power : 5V DC, 2A (external, delivered)
Ethernet speed : 10/100 Mbps

Type no.	Supplier no.	Type
SC1052	SC1052	IP Extender Coax
SC1054	SC1054	IP Extender CAT5



Did you experience a failure of air conditioning in your data center over the past 12 months, like 45 % of surveyed IT managers? With an increase in the size of data centers, the risk of overheating equipment has grown extensively. Jakarta combats this risk with its unique monitoring and warning system, the interSeptor Pro series.

“An undetected failure can have catastrophic consequences for a data center. With our interSeptor Pro series we have developed a system that monitors the environmental factors of a data center 24/7, even at night and on weekends, and sends an instant notification of abnormal values,” says Colin Moccock, Marketing Director at Jakarta.

Create maximum safety and insight into your data center with Jakarta!

Jakarta builds reliable, more cost efficient and easy to install remote monitoring systems for data centers, IT racks and computer rooms. These systems are indispensable in a modern network environment because they offer an energy-saving protection against failure and damage in your network.

With the combination of software solutions and alarm systems Jakarta offers insight into trends in temperature, humidity, voltage, water leaks, smoke, ventilation, air conditioning and security issues in server rooms (eg unclosed doors) within your computer network.



European development and production

Jakarta is a British manufacturer with a high quality and reliability standard. The quality of Jakarta is excellent, resulting in reliable and good products.

24/7 insight into the status of your data center environment

The monitoring systems of Jakarta provide 24/7 insight into the environmental status and immediately generate an alarm in case there are abnormal developments in:

- ✓ Temperature
- ✓ Humidity
- ✓ Voltages
- ✓ Emergencies (smoke, water leakage)
- ✓ Air conditioning
- ✓ Ventilation
- ✓ Security

Jakarta's interSeptor and interSeptor Pro

The two focal lines of Jakarta are the interSeptor and interSeptor Pro series. The interSeptor is a scalable monitoring system that alerts in case of abnormal values in the environment of a data center. Part of this series is the interSeptor iMeter, this meter; this meter monitors the power supply to the racks, as well as the environmental factors of these racks.

The interSeptor Pro is more advanced; in addition to generating alarms, it also provides data analysis to determine and early warn for impending developments in environmental factors.

INTERSEPTOR WITH TEMPERATURE/HUMIDITY SENSOR

interSeptor is a full-featured, scaleable network environmental monitoring device designed to remotely monitor temperature, humidity and other environmental conditions in data centres, IT rooms and racks. Email and SNMP alerts are available as standard, but combined with our unique Alert Centre facility interSeptor can also provide automated telephone voice and text alerts 24/7 to give early-warning of impending computer room problems. Designed for 'out-of-the-box' operation, interSeptor is supplied with a dual temperature/humidity sensor, with additional temperature/humidity sensors available also. A range of optional 'Go-Probe' sensors to detect security breaches, power failures, smoke and water leaks can also be quickly added to the interSeptor system to provide comprehensive monitoring of your critical environments.

- Monitoring via Web & SNMP
- On-board Logging/Graphing
- Alerts via Email, SNMP Traps as standard, Voice and SMS Text via Alert Centre



Jakarta

Type no.	Supplier no.	Sensors
JK1000	IS01EU	1x Temperature/Humidity.
JK1001	IS02EU	2x Temperature/Humidity.
JK1002	ISPLUS02EU	2x Temperature/Humidity + 1x Security ~1x Water.
JK1003	ISRACK	19 inch rack 1HE.

JAKARTA IT-ROOM CONTROL

INTERSEPTOR PRO 8-PORT (INC. TEMP/HUMIDITY SENSORS)

interSeptor Pro is an advanced ethernet Data Centre and Rack Monitoring System that monitors room and rack environmental conditions and provides early warning alerts in the event of air-conditioning failure and other conditions that may threaten business continuity. In addition, interSeptor Pro can also be used to extensively record temperature/humidity data for graphing and analysis helping you not only to ensure your IT equipment is running under optimal conditions but also to quickly identify where air-conditioning systems could be run more efficiently to maximise energy savings

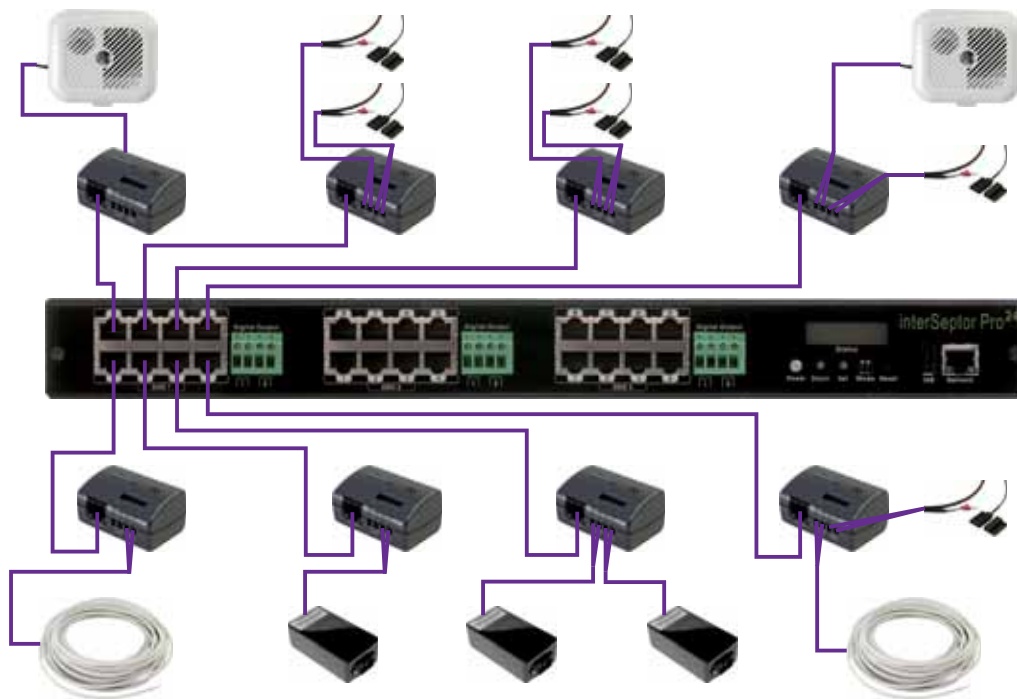


The unique design of the interSeptor Pro means that 2 additional Go-Probe alarm sensors (water leak, security, smoke, power, etc.) can be connected to each temperature/humidity probe. This means the 24-port device, for instance, has the capacity to support an incredible 48 additional alarm sensors, giving complete long-term flexibility in terms of sensor deployment.

- Temperature/Humidity Sensor supplied for every port as standard
- Up to 48 Go-Probe Sensors (water, smoke, security, power) can be quickly connected
- Alerts via Email, SNMP and SMS Text (using GSM modem)
- Relay outputs for crisis management

Jakarta

Type no.	Supplier no.	Sensors
JK1004	ISPROUK02	8- ports delivered with 2x Temperature/Humidity sensors.
JK1005	ISPROUK04	8- ports delivered with 4x Temperature/Humidity sensors.
JK1006	ISPROUK08	8- ports delivered with 8x Temperature/Humidity sensors.
JK1007	ISPROUK16	16-ports delivered with 16x Temperature/Humidity sensors.
JK1008	ISPROUK24	24-ports delivered with 24x Temperature/Humidity sensors.



Jakarta iMeter

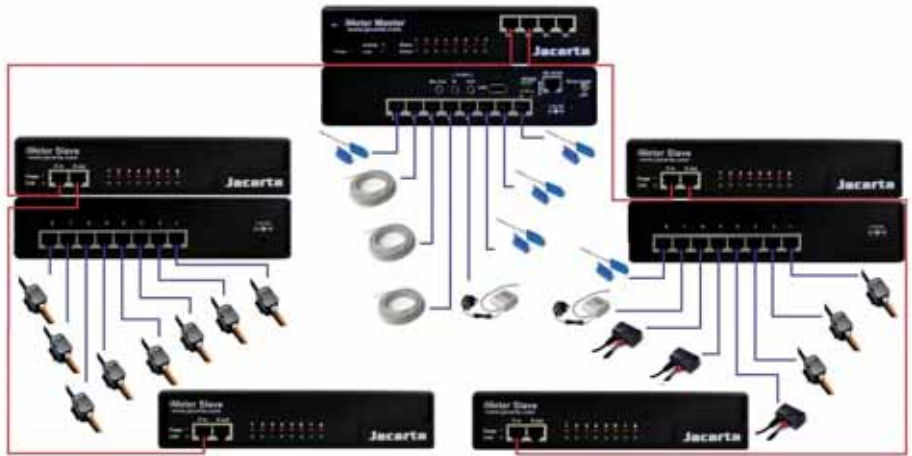
iMeter® is a flexible, scalable solution that enables IT departments to understand the environmental factors in the server room and the racks. iMeter consists of three main components: the iMeter Master, the iMeter Slave and a wide range of sensors. Each 8-port iMeter Master can be expanded with up to 72 8-port iMeter Slaves.

- ✓ Alerts by e-mail, SNMP, Voice and SMS Text (by GSM modem).
- ✓ Monitors voltage and current without network downtime.
- ✓ 8 Sensor ports per iMeter Master and Slave (monitors 584 sensors of one IP-adres).
- ✓ Slaves can be daisy-chained.
- ✓ Water, temperature, humidity, smoke, security and dry contact-sensors are available.
- ✓ iMS Software to manage, analyse and report temperature, humidity and power data.



iMeter installation requirements

- ✓ Select the to be connected sensors.
- ✓ Determine how many iMeter Slaves are required.
- ✓ Connec the iMeter Master and Sales by using a CAT5 cable.
- ✓ Install the sensors on the ports as suggested; the sensors will be recognized automatically after installation.
- ✓ Configure the desired settings via the browser interface



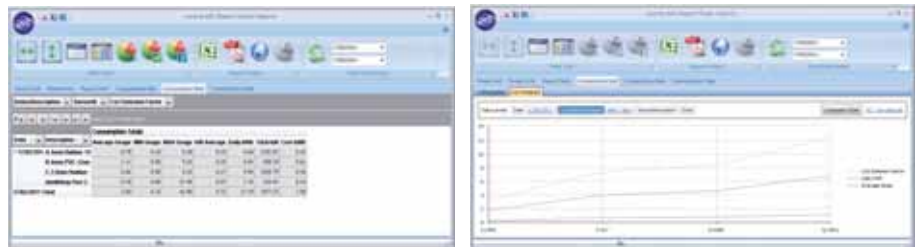
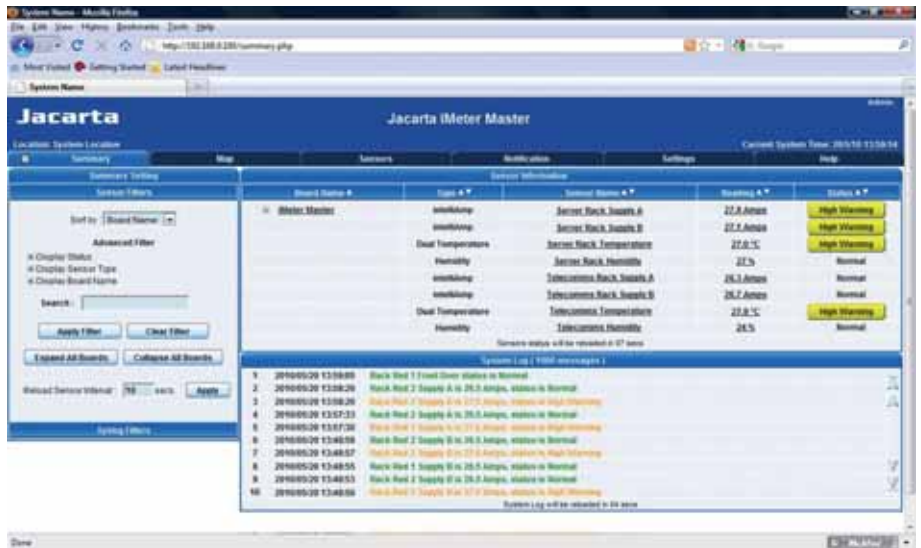
iMS software

Data collection of power supply and environmental factors via MySQL.

- ✓ Power
- ✓ Voltage
- ✓ Temperature
- ✓ Humidity

Reports in PDF, Excel and HTML formats. Power analysis and indication of power costs up to racklevel. CO2-emissions and KWh data can bve reported, analyzed and visualized.

Cost savings and efficiency improvements can be identified with reported data.



IMETER MASTER

iMeter® is a flexible, scalable and ultimately extremely powerful solution that enables IT departments to monitor the power flowing into racks and the environmental conditions in and around those racks. iMeter® is made up of 3 principal components, the iMeter Master, the iMeter Slave and our range of power and environmental Sensors. Each 8-port iMeter Master can support up to 72 8-port iMeter Slaves

- Alerts via Email, SNMP, Voice and SMS Text (via GSM Modem)
- Monitor current and voltage with zero network downtime
- 8 Sensor ports per iMeter Master and Slave (monitor 584 sensors from one IP address)
- Slaves can be daisy-chained
- Water, Temperature, Humidity, Smoke, Security and Dry Contact Sensors available
- iMS Software to Manage, Analyse and Report Temperature, Humidity and Power Data



Jakarta

Type no.	Supplier no.	Type
JK2000	iMM08	Master

IMETER SLAVE

iMeter® is a flexible, scalable and ultimately extremely powerful solution that enables IT departments to monitor the power flowing into racks and the environmental conditions in and around those racks. iMeter® is made up of 3 principal components, the iMeter Master, the iMeter Slave and our range of power and environmental Sensors. Each 8-port iMeter Master can support up to 72 8-port iMeter Slaves



Jakarta

Type no.	Supplier no.	Type
JK2001	iMS08	Slave

JAKARTA IT-ROOM CONTROL

The temperature and humidity sensor with a high / low warning and critical conditions of temperature and humidity values, can be configured in the interSeptor to make sure that an alarm goes off in case of abnormal conditions. The hysteresis configuration ensures the alarms are not triggered when the levels "hover" around the configured thresholds.

The water leak sensor is supplied with a 3 or 18 meters long leak sensor cable. The cable can be installed in the air-conditioning installation, in ceiling voids, under floors and within pipes. You will create a simple, comprehensive leak detection this way.

The security sensor option is a magnetic reed contact sensor, ideal for monitoring a rack or door.

This ionization smoke detection system is supplied with a 12V power supply. The unique connectivity design of the sensor interSeptor simplifies the installation and monitoring of the smoke alarm, especially on ceilings. The cable connection only needs to be done from the temperature / humidity sensors, which are usually already installed.

The voltage sensor can be used to check for outages and interruptions. As soon as the voltage output is disconnected, the sensor will sound an alarm.

The motion sensor uses Passive Infra - Red (PIR) technology to detect motion. Upon detection sounds an alarm.

The IntelliVolt voltage sensor is simply connected on one of the iMeter sensor ports and outlet. The voltage is monitored between 0 and 265V.

TEMPERATURE/HUMIDITY SENSOR



Type no.	Supplier no.	Length
JK1009	ISTH	2.00 m
JK1010	ISTH18	18.00 m

WATER DETECTOR WITH LEAK SENSOR CABLE



Type no.	Supplier no.	Length
JK1011	IS3WD4US	3.00 m Interseptor & Pro
JK1012	IS18WD4US	18.00 m Interseptor & Pro
JK2010	SP3WD4US	3.00 m iMeter
JK2011	SP18WD4US	18.00 m iMeter

PIR SENSOR



Type no.	Supplier no.	Length
JK1015	ISPIR4INT	4.00 m
JK1016	ISPIR18INT	18.00 m

VOLTAGE SENSOR



Type no.	Supplier no.	Length
JK1017	ISVS4EU	4.00 m
JK1018	ISVS18EU	18.00 m

SMOKE DETECTOR



Type no.	Supplier no.	Length
JK1019	ISSD4INT	4.00 m, interSeptor & interSeptor Pro
JK1020	ISSDINT	18.00 m, interSeptor & interSeptor Pro
JK2018	SPSD4	4.00 m, iMeter
JK2019	SPSD18	18.00 m, iMeter

SECURITY SENSOR



Type no.	Supplier no.	Length
JK1013	ISSS4	4.00 m, interSeptor & interSeptor Pro
JK1014	ISSS18	18.00 m, interSeptor & interSeptor Pro
JK2012	SPSS4	4.00 m, iMeter
JK2013	SPSS18	18.00 m, iMeter

For more information and prices please visit our website or contact our sales team.

iMETER INTELLIVOLT (230V/50HZ)



Type no.	Supplier no.	Type
JK2003	iVOLT01	iMeter intelliVolt

iMETER VOLTAGESENSOR



Type no.	Supplier no.	Length
JK2016	SPVS4EU	4.00 m
JK2017	SPVS18EU	18.00 m

iMETER INTELLIAMP



Type no.	Supplier no.	Type
JK2002	iAMP01	intelliAmp 16 A / 32 A

iMETER AIRFLOWSENSOR



Type no.	Supplier no.	Length
JK2014	SPAS4	4.00 m
JK2015	SPAS18	18.00 m

iMETER TEMPERATURE SENSOR & TEMP/HUMIDITY SENSOR



Type no.	Supplier no.	Length
JK2004	SPTS1	0.30 m Temperature sensor
JK2005	SPTS4	4.00 m Temperature sensor
JK2006	SPTS18	18.00 m Temperature sensor
JK2007	SPTH1	0.30 m Temp/humidity sensor
JK2008	SPTH4	4.00 m Temp/humidity sensor
JK2009	SPTH18	18.00 m Temp/humidity sensor

ALARM BEACON



Type no.	Supplier no.	Length
JK1031	ISPBCN4INT	4.00 m, interSeptor & interSeptor Pro
JK1032	ISPBCN18INT	18.00 m, interSeptor & interSeptor Pro
JK2022	SPBCN4	4.00 m, iMeter
JK2023	SPBCN18	18.00 m, iMeter

GSM MODEM



Type no.	Supplier no.	Type
JK1033	ISPGSM	interSeptor Pro GSM modem
JK2024	iMGSM EU	iMeter GSM modem

CABLE PACK



Type no.	Supplier no.	Content
JK1036	ISPCBL08	2x 4 m, 2x 6 m, 2x 8 m, 2x 10m
JK1037	ISPCBL16	JK1036 + 2x 12 m, 2x 14 m, 2x 16 m, 2x 18 m
JK1038	ISPCBL24	JK1037 + 2x 20 m, 2x 22 m, 2x 24 m, 2x 26 m

PATCHPANELS

BLINDPANEEL PLASTIC HE



Type no.	Supplier no.	Type
PP1040	PP1040	1 U

PATCHPANEL 24-PORTS UTP

- IDC compatible with 110 & Krone tool
- Universal labels color-coded for T568A and T568B wiring schemes



Technical specifications

Ports : 24x RJ-45
Suitable for : 4 pairs, 22-26 AWG unshield cable

Type no.	Supplier no.	Category
PP1001	PP1001	CAT5E
PP1010	PP1010	CAT6

PATCHPANEL 24-PORTS UTP 45°

- IDC compatible with 110 & Krone tool
- Universal labels color-coded for T568A and T568B wiring schemes



Technical specifications

Ports : 24x RJ-45 45°
Suitable for : 4 pairs, 22-26 AWG unshield cable

Type no.	Supplier no.	Category
P24AK1	P24AK1	CAT5E
PP1013	PP1013	CAT6

PATCHPANEL 24-PORTS UTP WITH CABLE MANAGEMENT BAR

- IDC compatible with 110 & Krone tool
- Universal labels color-coded for T568A and T568B wiring schemes.
- With cable management bar.



Technical specifications

Ports : 24x RJ-45
Suitable for : 4 pairs, 22-26 AWG unshielded cable

Type no.	Supplier no.	Category
PP1011	PP1011	CAT6

Go to Molex on page 200 for more patchpanels



PATCHPANEL 24-POORTS SHIELDED CAT6A WITH COVER

- IDC compatible with 110 & Krone tool
- IDC compatible with 110 & Krone tool.
- Universal labels color-coded for T568A and T568B wiring schemes.

Technical specifications

Ports : 24x RJ-45
 Suitable for : 4 pairs, 22-26 AWG solid and stranded cable



Type no.	Supplier no.	Category
PP1020	PP1020	CAT6A

PATCHPANEL 24-POORTS SHIELDED WITH COVER

- IDC compatible with 110 & Krone tool
- IDC compatible with 110 & Krone tool.
- Universal labels color-coded for T568A and T568B wiring schemes.

Technical specifications

Ports : 24x RJ-45
 Suitable for : 4 pairs, 22-26 AWG solid and stranded cable



Type no.	Supplier no.	Category
PP1002	PP1002	CAT5E
PP1012	PP1012	CAT6

24 PORT KEYSTONE-JACK PATCHPANEL WITHOUT CONNECTORS

- Suitable for Unshielded and shielded keystone jacks
- Suitable for keystone TD5xxx and TD6xxx range
- With yellow/green AWG18 ground wire (0.40m)
- With cable management bar.
- Keystone Jacks will be placed 45 degrees left or right.

Technical specifications

Length : 19 inch (482.6mm)
 Height : 1 HE
 Depth : 92.3 mm
 Colour : Black
 Colour number : RAL9005



Type no.	Supplier no.	Number of sockets
PP1030	PP1030	24

24 PORT KEYSTONE JACK 45° PATCH PANEL WITHOUT CONNECTORS

- Suitable for Unshielded and shielded keystone jacks
- Suitable for keystone TD5xxx and TD6xxx range
- With yellow/green AWG18 ground wire (0.40m)
- With cable management bar.



Type no.	Supplier no.	Number of sockets
PP1033	PP1033	24

PATCHPANELS

12-PORT FIBER OPTIC PATCHPANEL

These fiber optic patchpanels are available in various versions (aluminium, telescopic, or with one or more pre-mounted adapters).

Technical specifications

Number of connections	: 12
Color	: RAL 7035
Material	: Steel
Angle connections	: 0°



Type no.	Supplier no.	Ports
EA9500	EA9500	MM 12xST Simplex
EA9505	EA9505	SM 12xST Simplex
EA9510	EA9510	MM 12xSC/ST Duplex
EA9515	EA9515	SM 12xSC/ST Duplex
EA9520	EA9520	MM 12xSC Duplex
EA9525	EA9525	SM 12xSC Duplex

COMPLETE PREASSEMBLED DISTRIBUTION BOX WITH PULL/OUT MTP®/MPO FANOUT

- 19 " 1U RAL 7071 drawer with telescopic pullout
- Distribution plate for 8 x MTP®/MPO adapters

Technical specifications

Colour	: RAL 7021
Dimensions (W) x (H) x (D)	: 483 x 44.5 x 280 mm



Type no.	Supplier no.	Connectors
EA9612	EA9612	2 x MTP® - 24 x SC
EA9614	EA9614	4 x MTP® - 48 x SC
EA9622	EA9622	2 x MTP® - 24 x LC
EA9624	EA9624	4 x MTP® - 48 x LC
EA9628	EA9628	8 x MTP® - 96 x LC

DISTRIBUTION BOX FOR ASSEMBLED MTP®-MPO CASSETTES



Type no.	Supplier no.	Type
EA9600	EA9600	3 x Mounting hole

DUMMY PLATE FOR DISTRIBUTION BOX



Type no.	Supplier no.	Type
EA9601	EA9601	Dummy plate RAL 7021

COMPLETE ASSEMBLED MPO FANOUT CASSETTES

- PO-male Fanout unit 900 µm coloured
- Quick lock



Type no.	Supplier no.	Connectors
EA9602	EA9602	1 x MPO - 12 x SC
EA9603	EA9603	1 x MPO - 12 x LC
EA9604	EA9604	2 x MPO - 2 x 12 x LC

KEYSTONE JACK UNSHIELDED RJ-45 TOOL FREE

- No punch down tool needed.
- Universal labels color-coded for T568A and T568B wiring schemes.
- Fitting 1U 24 port High Density keystone panel.
- Cat 6 type is 3P verified.



Technical specifications

Connector : RJ-45 Jack
 Contacts : 50μ gold
 Suitable for : 4 pairs, 22-26 AWG solid and stranded cable

Type no.	Supplier no.	Type
TD5010	TD5010	CAT5E Black
TD5011	TD5011	CAT5E White
TD6010	TD6010	CAT6 Black
TD6011	TD6011	CAT6 White

KEYSTONE JACK FULL SHIELDED RJ-45 TOOL FREE

- No punch down tool needed.
- Universal labels color-coded for T568A and T568B wiring schemes.
- Fitting 1U 24 port High Density keystone panel.
- CAT6 type is Delta verified.



Technical specifications

Connector : RJ-45 Jack
 Contacts : 50μ gold
 Suitable for : 4 pairs, 22-26 AWG solid and stranded cable

Type no.	Supplier no.	Type
TD5020	TD5020	CAT5E Tool free
TD6020	TD6020	CAT6 Tool free
TD6510	TD6510	CAT6A Tool free

KEYSTONE JACK UNSHIELDED RJ-45 PUNCH DOWN

- IDC compatible with 110 & Krone tool.
- Universal labels color-coded for T568A and T568B wiring schemes.
- Fitting 1U 24 port High Density keystone panel.
- CAT6 type is 3P verified.



Technical specifications

Connector : RJ-45 Jack
 Contacts : 50μ gold
 Suitable for : 4 pairs, 22-26 AWG

Type no.	Supplier no.	Type
TD5012	TD5012	C5E Black
TD5013	TD5013	C5E White
TD6012	TD6012	C6 Black
TD6013	TD6013	CAT6 White

KEYSTONE JACKS

KEYSTONE JACK FULL SHIELDED RJ-45 PUNCH DOWN

- IDC compatible with 110 & Krone tool.
- Universal labels color-coded for T568A and T568B wiring schemes.
- Fitting 1U 24 port High Density keystone panel.
- CAT6 type is Delta verified.



Technical specifications

Connector : RJ-45 Jack
Contacts : 50µ gold
Suitable for : 4 pairs, 22-26 AWG

Type no.	Supplier no.	Type
TD5021	TD5021	CAT5E
TD6021	TD6021	CAT6
TD6511	TD6511	CAT6A

KEYSTONE JACK UNSHIELDED RJ-45 PUNCH DOWN

- IDC compatible with 110 & Krone tool.
- Universal labels color-coded for T568A and T568B wiring schemes.
- UL Listed.
- CAT6 type is 3P verified channel performance.



Technical specifications

Connector : RJ-45 Jack
Contacts : 50µ gold
Suitable for : 4 pairs, 22-26 AWG

Type no.	Supplier no.	Type
TD5014	TD5014	CAT5E Black
TD5015	TD5015	CAT5E White
TD6014	TD6014	CAT6 Black
TD6015	TD6015	CAT6 White
TD6016	TD6016	CAT6A Black
TD6017	TD6017	CAT6A White

KEYSTONE JACK FULL SHIELDED RJ-45 PUNCH DOWN

- IDC compatible with 110 & Krone tool.
- Universal labels color-coded for T568A and T568B wiring schemes.
- UL Listed.
- CAT6 type is 3P verified channel performance.



Technical specifications

Connector : RJ-45 Jack
Contacts : 50µ gold
Suitable for : 4 pairs, 22-26 AWG

Type no.	Supplier no.	Type
TD5022	TD5022	CAT5E
TD6022	TD6022	CAT6
TD6023	TD6023	CAT6A

RJ FEMALE - RJ FEMALE, CROSSED

RJ-female - RJ-female
Crossed connection.



Type no.	Supplier no.	Connector
TD1004	TD1004	RJ-11
TD1008	TD1008	RJ-45

RJ FEMALE - RJ FEMALE, 1:1

RJ-female - RJ-female
Connection 1:1
Suited as coupler to extend cables.



Type no.	Supplier no.	Connector
TD1014	TD1014	RJ-11
TD1016	TD1016	RJ-12
TD1018	TD1018	RJ-45

INLINE COUPLER RJ-45 UNSHIELDED

Technical specifications

Connector A : RJ-45 female
Connector B : RJ-45 female
Wiring : Straight



Type no.	Supplier no.	Type
SD6008	SD6008	CAT6

INLINE COUPLER RJ-45 SHIELDED

Technical specifications

Connector A : RJ-45 female
Connector B : RJ-45 female
Wiring : Straight



Type no.	Supplier no.	Type
SD6018	SD6018	C6
SD5018	SD5018	C5E
SD6518	SD6518	C6A

KEYSTONE COUPLER RJ-45 UNSHIELDED

Technical specifications

Connector A : RJ-45 female
Connector B : RJ-45 female
Wiring : Straight



Type no.	Supplier no.	Type
SD5009	SD5009	CAT5E
SD6009	SD6009	CAT6

MODULAR COUPLERS

KEYSTONE COUPLER RJ-45 SHIELDED

Technical specifications

Connector A : RJ-45 female
 Connector B : RJ-45 female
 Wiring : Straight



Type no.	Supplier no.	Type
SD5019	SD5019	CAT5E
SD6019	SD6019	CAT6
SD6519	SD6519	CAT6A

JUNCTIONBOX UNSHIELDED

- IDC compatible with 110 & Krone tool



Type no.	Supplier no.	Type
SD6021	SD6021	CAT6
SD5021	SD5021	CAT5E

JUNCTIONBOX SHIELDED

- IDC compatible with 110 & Krone tool



Type no.	Supplier no.	Type
SD6020	SD6020	CAT 6
SD5020	SD5020	CAT5E

SPLITTERS

RJ MODULAR T-ADAPTERS, 3X FEMALE

Modular T-adapter

Technical specifications

Application : 1:1



Type no.	Supplier no.	Connectors
TD1404	TD1404	3x RJ-11 female
TD1408	TD1408	3x RJ-45 female
TD1406	TD1406	3x RJ-12 female

RJ MODULAR T-ADAPTERS, 2X FEMALE + 1X MALE

Modular T-adapter

Technical specifications

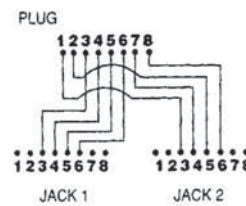
Application : 1:1



Type no.	Supplier no.	Connectors
TD1504	TD1504	2x RJ-11 female - 1x RJ-11 male
TD1506	TD1506	2x RJ-12 female - 1x RJ-12 male
TD1508	TD1508	2x RJ-45 female - 1x RJ-45 male

UTP SPLITTER - USOC -> TOKENRING / PHONE

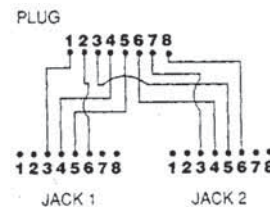
Splits a 4 pair USOC connection in pair 1&2 to port 1 and pair 3&4 to port 2 for Token Ring or phone/modem/fax on both ports.



Type no.	Supplier no.	Wiringdiagram
TS1010	TS1010	USOC Tokenring

UTP SPLITTER - T568B -> TOKENRING / PHONE

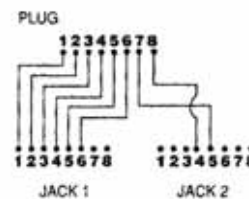
Splits a 4 pair T568B connection in pair 1&2 to port 1 and pair 3&4 to port 2 for Token Ring or phone/modem/fax on both ports.



Type no.	Supplier no.	Wiringdiagram
TS1015	TS1015	T568B Tokenring

UTP SPLITTER - T568B -> 356A / PHONE

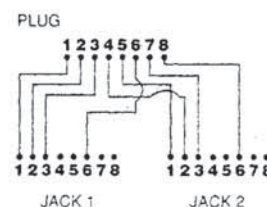
Splits a 4 pair T568B connection in pair 1&2&3 to port 1 (356A) and pair 4 to port 2 for data-connection and phone/modem/fax.



Type no.	Supplier no.	Wiringdiagram
TS1020	TS1020	T568B - 356A

UTP SPLITTER - T568A / T568B -> 10BASE-T

Splits a 4 pair T568A/T568B connection in pair 2&3 to port 1 and pair 1&4 to port 2 for example 10Base-T applications (10 mbps).

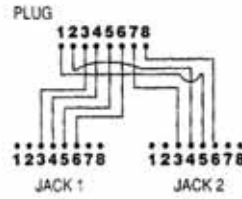


Type no.	Supplier no.	Wiringdiagram
TS1025	TS1025	T568A - T568B

SPLITTERS

UTP SPLITTER - T568A -> TOKENRING

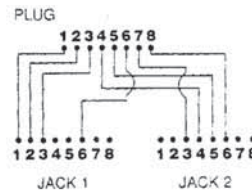
Splits a 4 pair T568A connection in pair 1&2 to port 1 and pair 3&4 to port 2 for example Token Ring applications.



Type no.	Supplier no.	Wiringdiagram
TS1030	TS1030	T568A Tokenring

UTP SPLITTER - T568A -> T568B 10BASE-T / TOKERING

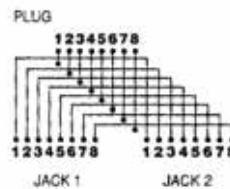
T568B 10Base-T / Tokenring Splits a 4 pair T568A/T568B connection in pair 2&3 to port 1 and pair 1&4 to port 2 for example 10Base-T in combination with Token Ring applications.



Type no.	Supplier no.	Wiringdiagram
TS1035	TS1035	T568A/T568B 10 Base T Tokenring

UTP SPLITTER - 2X 8 WIRES

Duplicates 8 wires to both connections.



Type no.	Supplier no.	Wiringdiagram
TS1040	TS1040	2x 8 pins 1:1

CAI AND SURFACE-MOUNTED JUNCTION BOX WITH KABEL KEUR CERTIFICATION

The junction boxes come in a complete kit, including installation material and instructions. The junction boxes are 'Kabel Keur' certified and can be used as a junction box for radio, TV and digital services. The TD4000 is used as a transition point (AOP subscriber transfer point) between the CATV network of the cable operator and the home network.

- Kabel Keur is prescribed by UPC and Ziggo.
- With Kabel Keur, you immediately recognize the best connection material for your TV.

Technical specifications

Impedance : 75 Ohm
Cable diameter : 6 till 8.5 mm

Type no.	Supplier no.	Type
TD4000	TRAS-1000BKK	One hole outlet
TD4001	TRAS-2000KK	Junction box radio / TV



CAI DISTRIBUTORS EQUIPPED WITH F CONNECTORS WITH KABEL KEUR

With these splitters, signals can be divided into equally strong signals with minimal attenuation loss. The available coax cable must be connected to the input, the output cables can be connected to the outputs with F-connectors. The Kabel Keur certified splitters are suitable for radio, television and digital services.

- Kabel Keur is prescribed by UPC and Ziggo.
- With Kabel Keur, you immediately recognize the best connection material for your TV.

Technical specifications

Impedance : 75 Ohm
Frequency : 5-1000 MHz
Connection : F-connectoren

Type no.	Supplier no.	Type
TD4002	ES-02NKK	2-way splitter



CAI IEC SPLITTERS

With the TD4003, a connection to a junction box can be realized quite easily. The two outputs of the splitter are broad-band, so the total frequency spectrum will be transmitted. This means that the splitter is also suitable for the connection of cable modems and/or digital Set-top boxes. The Kabel Keur certified splitter is suitable for radio, television and digital services.

- Kabel Keur is prescribed by UPC and Ziggo.
- With Kabel Keur, you immediately recognize the best connection material for your TV.

Technical specifications

Impedance : 75 Ohm
Frequency : 5-1000 MHz
Connection : IEC Connectors

Type no.	Supplier no.	Type
TD4003	PTS-02KK	2-way splitter



CAI CONNECTION MATERIAL

CAI HOUSE AMPLIFIER 4 FOLD 20 MTR

Signal loss can occur when multiple radio and TV connections exist in an indoor network. An amplifier can provide the solution to this problem. The amplifier amplifies the signal so that the signal loss is compensated. The TD4006 comes in a complete kit, including installation material and instructions. The amplifier has four outputs with different amplifications. This means that the outputs are suitable for different cable lengths from 0 to 20 metres. All outputs are support return. The Kabel Keur certified amplifier is suitable for radio, television and digital services.



- Kabel Keur is prescribed by UPC and Ziggo.
- With Kabel Keur, you immediately recognize the best connection material for your TV.

Technical specifications

Frequency	: 85-862 MHz
RTV amplification port 1	: 0 dB
RTV amplification port 2	: + 2 dB
RTV amplification port 3	: + 4.5 dB
RTV amplification port 4	: + 7.5 dB
Returnpath gain	: + 2.5 dB (5-65Mhz)
Connection	: F connectors



Type no.	Supplier no.	Type
TD4006	FRA-752NKK	4 lane amp to 20 mtr

CAI HOUSE AMPLIFIER 4 FOLD 15 MTR

Signal loss can occur when multiple radio and TV connections exist in an indoor network. An amplifier can provide the solution to this problem. The amplifier amplifies the signal so that the signal loss is compensated. The TD4007 comes in a complete kit, including installation material and instructions. The amplifier has four outputs with different amplifications. The outputs are suitable for cable lengths from 0 to 15 metres. All outputs are support return. The Kabel Keur certified amplifier is suitable for radio, television and digital services.



- Kabel Keur is prescribed by UPC and Ziggo.
- With Kabel Keur, you immediately recognize the best connection material for your TV.

Technical specifications

Frequency	: 85-862 MHz
RTV gain port 1	: + 4 dB
RTV gain port 2	: + 4 dB
RTV gain port 3	: + 4 dB
RTV gain port 4	: + 4 dB
Connection	: F connectors



Type no.	Supplier no.	Type
TD4007	FRA-722NKK	4 lane amp to 15 mtr

CAI HOUSE-LINE AMPLIFIER

In case of a weak incoming signal, a repeater is the solution. The amplifier amplifies the signal so that the signal loss is compensated. The TD4008 comes in a complete kit, including installation material and instructions. The amplifier provides an output for a cable length of 30 metres. The output supports return. The Kabel Keur certified amplifier is suitable for radio, television and digital services.



- Kabel Keur is prescribed by UPC and Ziggo.
- With Kabel Keur, you immediately recognize the best connection material for your TV.

Technical specifications

Frequency	: 85-862 MHz
RTV gain port	: + 12.5 dB
Returnpath gain	: + 6.5 dB (5-65MHz)
Connection	: F connectors



Type no.	Supplier no.	Type
TD4008	FRA-748DKK	amplifier to 30 mtr

CAI PLUG RTV FILTER

The splitter can be placed in a coax signal transfer point to enable a radio and TV connection. The television is connected to one output of the splitter and the radio to the second output. The RTV splitter supports return and is Kabel Keur certified. It is suitable for radio, television and digital services.

- Kabel Keur is prescribed by UPC and Ziggo.
- With Kabel Keur, you immediately recognize the best connection material for your TV.

Technical specifications

Connections : IEC connectors



Type no.	Supplier no.	Type
TD4010	TOF-02KK	2 way splitter for radio and television

CATV F CONNECTOR SET "EASY FIT"

High quality metal coaxial connectors for use with 7mm Kabel Keur coaxial cable. The easy fit connectors require no tools. If the coaxial cable is properly stripped, the Easy Fit plug can be easily slid on. The Kabel Keur Easy Fit connectors are aligned for a proper fit. Interference is kept to a minimum due to the EMC properties and attenuation is minimal too. The coaxial connectors support return and are Kabel Keur certified. They are suitable for radio, television and digital services.

- Kabel Keur is prescribed by UPC and Ziggo.
- With Kabel Keur, you immediately recognize the best connection material for your TV.

Technical specifications

Connection : F connectors
Cable thickness : 7 mm



Type no.	Supplier no.	Type
TD4005	SPP-12KK	set of 4 pieces

CAI IEC CONNECTORS KIT ANGLED MALE AND FEMALE PROFESSIONAL

High quality metal coaxial connectors for use with +/- 7 mm coaxial cable. Interference is kept to a minimum due to the EMC properties and attenuation is minimal too. The coaxial connectors support return and are Kabel Keur certified. They are suitable for radio, television and digital services.

- Kabel Keur is prescribed by UPC and Ziggo.
- With Kabel Keur, you immediately recognize the best connection material for your TV.

Technical specifications

Connection : IEC connectors
Cable thickness : 7 mm



Type no.	Supplier no.	Type
TD4004	COAX STEKKERS	male en female

ADSL CONNECTION MATERIAL

PSTN ADSL SPLITTER

ADSL Splitter for PSTN lines. The splitter has 3x RJ-11 female connections.

Technical specifications

Connector A : RJ-11 female
Connector B : 2x RJ-11 female
Connection : Analog ADSL Splitter



Type no.	Supplier no.	Description
TD2002	TD2002	PSTN ADSL Splitter

ADSL2+ SPLITTER ANALOG

Splitter for ADSL2+ connections. This splitter is for analog PSTN connections.

Technical specifications

Connector A : RJ-11 female
Connector B : 2x RJ-11 female
Connection : Analog ADSL 2+splitter
Suitable for : Analog PSTN



Type no.	Supplier no.	Description
TD2005	TD2005	ADSL2/2+ Splitter

ISDN ADSL SPLITTER

ISDN ADSL Splitter

This splitter is used to split up the ADSL and the ISDN signals. The splitter is placed between the ISRA and the NT1.

- Including double-sided tape

Technical specifications

Connector A : RJ-11 female
Connector B : 2x RJ-11 female
Connection : ISDN ADSL splitter
Measurement : 65x34x20 mm



Type no.	Supplier no.	Description
TD2012	TD2012	ISDN ADSL Splitter NL

TELEPHONE / ADSL SPLITTER - BELGIAN MODEL

Telephone / ADSL Splitter - Belgian model

This splitter is used for ADSL connections over analogue (PSTN / POTS) lines. ADSL will be connected with RJ-11 connector. The telephone will be connected to the front with the standard Belgian phone plug.

Technical specifications

Connector : Belgian telephone connection
Connection : Analog ADSL splitter Belgian connection



Type no.	Supplier no.	Description
TD2020	TD2020	PSTN ADSL Splitter Belgium

RJ-11 - SCREW TERMINAL ADAPTER

RJ-11 - Screw Terminal Adapter
Connection block, RJ-11 to 2-position screw terminals.

Technical specifications

Connector : RJ-11 female
Mounting side : Screw



Type no.	Supplier no.	Description
TD2050	TD2050	RJ-11 to 2 Terminals

ISDN MALE TERMINATOR - 100 OHM

Technical specifications

Cable	: 100 Ohm (ISDN)
Connector	: RJ-45 male
Mounting Side	: Terminator



Type no.	Supplier no.	Description
FA642T	FA642T	ISDN Male Terminator

ISDN SPLITTER - 2X FEMALE - 1X MALE

ISDN Splitter - 2x female - 1x male
2 port splitter with male-end cable, terminated by two 100 Ohm resistors

Technical specifications

Connector In	: RJ-45 male
Connector Out	: 2x RJ-45 female
Use	: Universal



Type no.	Supplier no.	Ports
DN1020	DN1020	2

ISDN SPLITTER - 3X FEMALE

ISDN Splitter - 5x female - 1x male
5 port splitter with male-end cable, terminated by two 100 Ohm resistors

Technical specifications

Connector In	: RJ-45 male
Connector Out	: 5x RJ-45 female
Use	: Universal



Type no.	Supplier no.	Ports
DN1040	DN1040	5

IN WALL BOXES

IN-WALL BOX UNSHIELDED 2 PORTS GERMAN STYLE

- Compatible with Krone Tool

Technical specifications

Ports : 2x RJ-45



Type no.	Supplier no.	Type
FA5008	FA5008	CAT5E
FA6008	FA6008	CAT6

CAT5E UTP WALL TERMINATION UNIT FLUSH MOUNTIN

CAT5E UTP wall termination unit flush mounting 110 Block, complete set.

Technical specifications

Cable : UTP Solid
Connector : 2x RJ-45 female CAT5E
Mounting side : 110 block



Type no.	Supplier no.	Connector
JD1015	JD1015	2 x RJ-45 Female

IN-WALL BOX SHIELDED 2 PORTS GERMAN STYLE

- Compatible with Krone Tool

Technical specifications

Ports : 2x RJ-45



Type no.	Supplier no.	Type
FA5009	FA5009	CAT5E
FA6009	FA6009	CAT6
FA7009	FA7009	CAT6A

Kijk voor meer inbouwdozen bij Molex op pagina 204.

molex

MODULAR SURFACE UNITS TELEPHONE SINGLE RJ-11/RJ-12/RJ-45

Modular surface units telephone single RJ-11/ RJ12/ RJ-45, bottom entry.

Technical specifications

Mounting : Screw contacts



Type no.	Supplier no.	Connector
TD1704	TD1704	1x RJ-11
TD1706	TD1706	1x RJ-12
TD1708	TD1708	1x RJ-45

MODULAR SURFACE UNITS TELEPHONE DOUBLE RJ-11/RJ-12/RJ-45

Modular surface units telephone double RJ-11/ RJ12/ RJ-45, bottom entry.

Technical specifications

Mounting side : Screw contacts



Type no.	Supplier no.	Connectors
TD2704	TD2704	2x RJ-11
TD2708	TD2708	2x RJ-45

PTT / RJ-11 WALL TERMINATION UNIT SURFACE MOUN

PTT / RJ-11 wall termination unit surface mounting

Technical specifications

Connector : Phone plug Holland female



Type no.	Supplier no.	Description
TD1900	TD1900	PTT / RJ11

SURFACE MOUNTED BOX UNSHIELDED 1 PORTS

- IDC compatible with 110 & Krone tool

Technical specifications

Ports : 1x RJ-45



Type no.	Supplier no.	Type
FA5003	FA5003	CAT5E
FA6003	FA6003	CAT6

WALL MOUNTING BOXES

SURFACE MOUNTED BOX UNSHIELDED 2 PORTS

- IDC compatible with 110 & Krone tool

Technical specifications

Ports : 2x RJ-45



Type no.	Supplier no.	Type
FA5002	FA5002	CAT5E
FA6002	FA6002	CAT6

SURFACE MOUNTED BOX UNSHIELDED 2 PORTS GERMAN STYLE

- Compatible with Krone Tool.

Technical specifications

Ports : 2x RJ-45



Type no.	Supplier no.	Type
FA5006	FA5006	CAT5E
FA6006	FA6006	CAT6

SURFACE MOUNTED BOX UNSHIELDED 8 PORTS

- IDC compatible with 110 & Krone tool

Technical specifications

Ports : 8x RJ-45
Colour : White



Type no.	Supplier no.	Type
FA5000	FA5000	CAT5E
FA6000	FA6000	CAT6

SURFACE MOUNTED BOX SHIELDED 1 PORTS

- IDC compatible with 110 & Krone tool

Technical specifications

Ports : 1x RJ-45



Type no.	Supplier no.	Type
FA5005	FA5005	CAT5E
FA6005	FA6005	CAT6
FA7005	FA7005	CAT6A

SURFACE MOUNTED BOX SHIELDED 2 PORTS

- IDC compatible with 110 & Krone tool

Technical specifications

Ports : 2x RJ-45



Type no.	Supplier no.	Type
FA5004	FA5004	CAT5E
FA6004	FA6004	CAT6
FA7004	FA7004	CAT6A

SURFACE MOUNTED BOX SHIELDED 2 PORTS GERMAN STYLE

- Compatible with Krone Tool.

Technical specifications

Ports : 2x RJ-45



Type no.	Supplier no.	Type
FA5007	FA5007	CAT5E
FA6007	FA6007	CAT6

SURFACE MOUNTED BOX SHIELDED 8 PORTS

- IDC compatible with 110 & Krone tool
- Metal housing.

Technical specifications

Ports : 8x RJ-45
Colour : Black



Type no.	Supplier no.	Type
FA5001	FA5001	CAT5E
FA6001	FA6001	CAT6
FA7001	FA7001	CAT6A

WALL MOUNTING PARTS

SINGLE SURFACE BOX

Single surface box.

Technical specifications

Color : Ivory



Type no.	Supplier no.	Description
CD581	CD581	Single Wall Mount Box

FRONT PLATE JUNG 1X RJ

Front plate JUNG 1x RJ with slide.

Technical specifications

Color : Ivory
Brand : JUNG



Type no.	Supplier no.	Suitable for
5691WE	5691WE	1 x RJ-45
5692WE	5692WE	2 x RJ-45

SEPARATE COVER PLATES

Separate cover plates.

Technical specifications

Color : Ivory



Type no.	Supplier no.	Description
5581JG	5581JG	Single Face Plate

DUAL SURFACE BOX

Dual surface box.

Technical specifications

Color : Ivory



Type no.	Supplier no.	Description
CD582	CD582	Dual Wall Mount Box