

total control[®]

Owner's Manual

CAM-MC

Indoor Network Camera



*CAM-MC Indoor Network Camera Owners Manual ©2014
Universal Remote Control, Inc.*

The information in this manual is copyright protected. No part of this manual may be copied or reproduced in any form without prior written consent from Universal Remote Control, Inc.

Universal Remote Control, INC. shall not be liable for operational, technical or editorial errors/omissions made in this manual.

The information in this manual may be subject to change without prior notice.

Total Control is a registered trademark of Universal Remote Control, Inc.

All other brand or product names are trademarks or registered trademarks of their respective companies or organizations.



Control the Experience.

500 Mamaroneck Avenue, Harrison, NY 10528
Phone: (914) 835-4484 Fax: (914) 835-4532

TABLE OF CONTENTS

Introduction	1
Features and Benefits	1
Parts Guide	1
CAM-MC Description	2
Basic Installation	3
Communicating with the Camera	4
Navigating the Web Interface - Live View	5
Navigating the Web Interface - Admin	6
Specifications	7
Limited Warranty Statement	8
End User Agreement	11
Federal Communication Commission Interference Statement	12
Regulatory Information to the user	13
Declaration of Conformity	14

Introduction

Congratulations on your purchase of the CAM-MC Indoor IP Camera! The CAM-MC is an indoor IP camera that allows for seamless viewing over the network with Total Control interfaces such as the TRC-1280, TKP-2000, TKP-7000, iPad/iPhone (*with TC Mobile App installed*) as well as any future Total Control graphical interfaces.

Once networked, it sends its image to compatible Total Control graphical interfaces or any PC (*running Internet Explorer*) on the same local area network.

Features and Benefits

- Outputs live video up to 30 fps at VGA resolution.
- Uses a progressive scan CMOS sensor, H.264/MJPEG dual encoding and transmission with simultaneous dual streaming capabilities.
- Video viewable on graphical user interfaces including the TRC-1280, TKP-2000, TKP-7000, iOS devices or a networked PC.
- Camera requires power via PoE. Use a URC injector (POE-1), switch (MFSPOE-8) or third party PoE solution.
- The camera has a minimum lux rating of 5.0 for a color image.

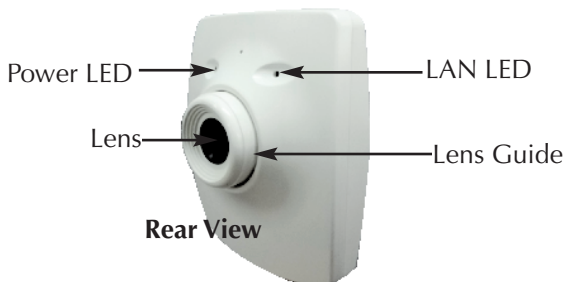
Parts Guide

The CAM-MC Indoor Network Camera includes:

- 1 - CAM-MC Indoor Network Camera
- 1 - Bracket Body
- 1 - Bracket Screws
- 1 - Allen Key
- 1 - Quick Installation Manual

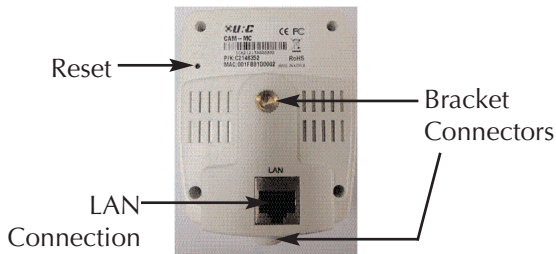
CAM-MC Description

Front View



Rear View

Name	Description
Power LED	Blue – Powered ON
LAN LED	Green – Link (when connected to a network)
Lens	Lens for built-in camera
Lens Guide	Used to adjust lens for better focus



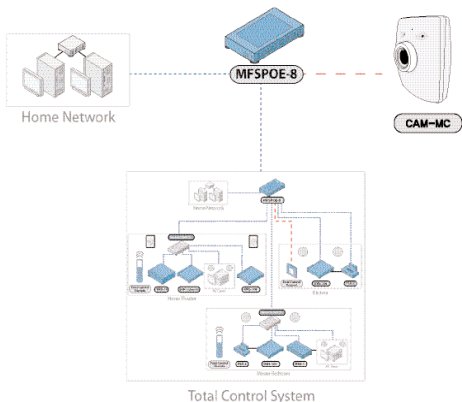
Name	Description
Reset	Pressing the "F.D" button will return the unit back to factory default settings, including the Admin ID and password.
Bracket Connector	Screw hole to mount the camera to bracket
LAN Connector	Plug an Ethernet cable from the camera's LAN connection to a PoE router or switch like URC's MFSPOE-8. (If a PoE switch is not used, you must use a PoE injector to supply power to the camera.)

Basic Installation

Follow these basic steps to install the Indoor Network Camera CAM-MC.

1. **Fasten** the camera to your planned location using the supplied mounting bracket.
2. **Plug** an Ethernet cable to the LAN port of the camera.

Note: No separate power supply is needed as the camera receives power via a PoE supply or a MFSPOE-8 router.



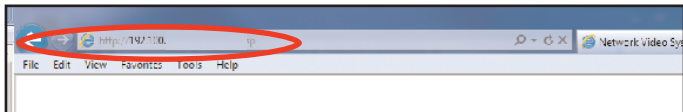
Communicating with the Camera

An IP address is required to view the camera and modify surveillance options. Once installed, locate the IP address assigned by your router (which will differ from the default address below). Your router contains a DHCP table which displays each connected device and its IP address. *IP addresses normally resemble 10.20.30.40 or 192.168.1.xx.* For further information, refer to the router's documentation.

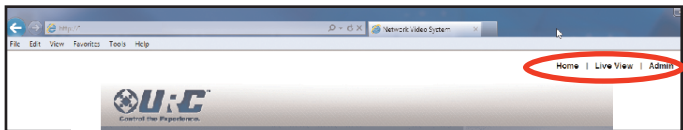
The camera's factory default options listed below may have changed depending upon your router settings made by the Custom Professional who installed your camera.

	Factory Default
Admin ID	root
Admin password	root
IP address	10.20.30.40

1. Enter the camera's IP address into the **web browser's address bar**.
URC recommends using Internet Explorer to view the live surveillance.

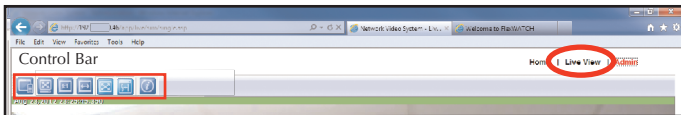


2. The IP camera's web interface opens. You now have access to the **Live View** and **Administration** sections described next.



Navigating the Web Interface - Live View

Select from the options below to modify the Live View.



Channel Control

Displays multiple camera streams. It modifies the primary and secondary streams (frame rate, image size, encoding, camera name, rate control mode, image quality and group of pictures structure) from the **Admin** page (Device Configuration > Camera & Motion).

Show Full/Normal Screen

View live video in either full or normal screen. Also capture images or video by hovering the mouse cursor over the top left corner to reveal the **Snapshot stream** and **Video** icons. Press the **Snapshot** icon to save JPEG images or the **video** icon to save AVI files to your PC. The maximum AVI recording time is 10 minutes. Press **ESC** to exit.

Show image in original size

Displays image in its original resolution with zooming capability. Use the **mouse** button or keys to zoom-in (+), zoom-out (-), and original size (/).

Draw image by maintaining aspect ratio

Fits video to its original size or to the screen (using the same aspect ratio). No zooming capability.

Draw image by filling the screen

Resizes the video to fill the entire screen. Zooming is not supported.

Enhanced Draw Mode On/Off

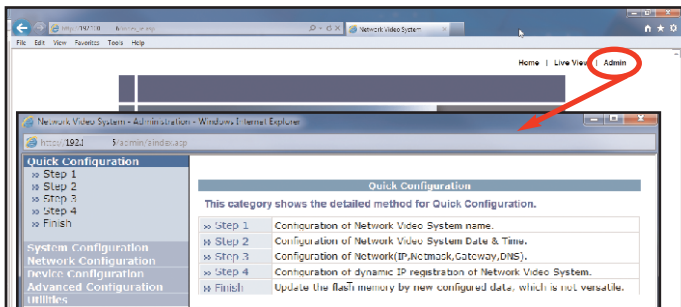
Enhances the image quality of a live video smaller than the original size.

About IP CCTV Information

Shows version information for the CCTV viewer.

Navigating the Web Interface - Admin

Use the **Admin** interface to modify advanced features for the camera. To gain access to the Admin site, enter the **default username** and **password** (*root and root*).



Quick Configuration: A guided step-by-step walkthrough to setup your camera's configuration settings. Setup your Server Name Setup, Date & Time, Network Configuration and IP-CCTV DNS Setup.

System Configuration: View and/or modify system configuration settings pertaining to the Server Name, Date & Time, Admin Password, User Access Control and User Registration.

Network Configuration: Assign the connection network settings for IP, Netmask, Gateway, DNS, Network Ports, Bandwidth Control, Network Status, IP-CCTV DNS and Port Forwarding.

Device Configuration: Setup the connection between the camera and server by configuring the Serial Ports, adding Privacy Zone screens, as well as modifying the camera name and image quality for the Primary and Secondary streams.

Utilities: View the System Log file, Save the Configuration, Reboot the camera, revert to the camera's Factory Default state, and update the camera's firmware from System Update.

Specifications

Camera Type	IP Camera
Image Sensor	1/4" VGA progressive scan CMOS
Indoor / Outdoor Use	Indoor Only
Lens	3.8mm F2.0, fixed lens
Min. illumination	5 lux color
Video Compression	H.264/MJPEG
Video Resolution	640X480 (VGA) 320X240 (Q VGA) 160X112 (QQ VGA)
Image quality Control	6 step quality control
Max Streaming Speed	Max 30 fps @ VGA resolution
Motion Detection	n/a
Network Bandwidth Control	VBR/CBR (H.264, 32k~12Mbps)
Network Protocol	HTTP, RTP/RTSP, TCP/IP, FTP, Telnet, RARP, PPPoE, SNMP, DHCP, NTP, SMTP client and etc
Viewer	IE6 and later, Firefox, Safari, Chrome. VLC, QuickTime, etc
Remote Admin.	Web based administration, setup, control, and upgrade
Dynamic IP	DDNS / uPnP support
Security	Channel-based user password protection
System H/W	32bit Embedded CPU Embedded Linux 128MByte SDRAM 128MByte NAND FLASH
LAN Interface	10/100-base-T
Certification	FCC/CE, RoHS
Working Conditions	0°C ~ +50°C / 20% ~ 80% RH
Power Supply	PoE support (router, switch or injector)
Power Consumption	Max 5W, (48V, max 100mA)
Size/Weight	40mm(W) x 72mm(D) x 90mm(H) 3.28oz. (Camera Only)

Limited Warranty Statement

1. Limited Warranty and Disclaimers

Universal Remote Control, Inc. ("URC") warrants that the URC equipment shall be free from defects in material and workmanship under normal usage for two (2) years from purchase when such is purchased from URC. **This limited warranty is valid only in the United States of America.** URC warrants that the software will substantially conform in any material respect to its functional specifications at the time of delivery. URC SHALL NOT BE LIABLE FOR OPERATIONAL, TECHNICAL OR EDITORIAL ERRORS AND/OR OMISSIONS MADE IN THE URC DOCUMENTATION. URC DOES NOT WARRANT THAT THE URC SOFTWARE IS BUG-FREE OR ERROR FREE OR THAT THERE ARE NO ERRORS/BUGS IN THE URC SOFTWARE.

URC warrants that at the time of purchase the URC equipment and the URC software complied with all applicable regulations and policies of the Federal Communications Commissions ("FCC") regarding electromagnetic interference caused by electronic/computing devices and to the extent that the URC equipment and/or the URC software fails to so comply, URC shall, at its own expense, take all reasonable measures to promptly cause such to comply.

URC equipment purchases from other than an authorized URC dealer or distributor are without warranty.

THIS LIMITED WARRANTY DOES NOT COVER TECHNICAL ASSISTANCE FOR HARDWARE OR SOFTWARE USAGE EXCEPT AS EXPRESSLY PROVIDED FOR HEREIN, THE EQUIPMENT, SOFTWARE AND DOCUMENTATION OF URC ARE SUPPLIED "AS IS" WITHOUT ANY WARRANTY, EXPRESS, STATUTORY OR IMPLIED, OF ANY KIND. TO THE MAXIMUM EXTENT PERMITTED BY APPLICABLE LAW, URC EXPRESSLY DISCLAIMS ALL WARRANTIES, EXPRESS, STATUTORY OR IMPLIED, INCLUDING BUT NOT LIMITED TO THE WARRANTIES OF MERCHANTABILITY AND FITNESS FOR A PARTICULAR PURPOSE. URC DOES NOT WARRANT, GUARANTEE, OR MAKE ANY REPRESENTATIONS REGARDING THE USE OF, OR THE RESULTS OF THE USE OF, THE EQUIPMENT, SOFTWARE OR DOCUMENTATION IN TERMS OF CORRECTNESS, ACCURACY, RELIABILITY OR OTHERWISE.

EXCEPT AS EXPRESSLY PROVIDED FOR HEREIN, TECHNICAL SERVICES ARE

SUPPLIED "AS IS", WITHOUT ANY WARRANTY, EXPRESS, STATUTORY OR IMPLIED, OF ANY KIND. TO THE MAXIMUM EXTENT PERMITTED BY APPLICABLE LAW, URC EXPRESSLY DISCLAIMS ALL WARRANTIES, EXPRESS, STATUTORY OR IMPLIED, INCLUDING BUT NOT LIMITED TO THE WARRANTIES OF QUALITY OR REASONABLE SKILL AND CARE, OR OUTCOME OR RESULTS.

WITHOUT IN ANY WAY LIMITING THE GENERALITY OF THE OTHER PROVISIONS HEREIN, WARRANTY DOES NOT COVER: (I) DAMAGE FROM MISUSE, NEGLIGENCE OR ACTS OF NATURE, (II) MODIFICATIONS, (III) INTEGRATION WITH THIRD PARTY CONTENT (IV) BEYOND THE WARRANTY PERIOD AND/ OR FAILURE TO FOLLOW URC WARRANTY CLAIM PROCEDURE.

The warranty limitations and warranty disclaimers may not apply to end user in whole or in part, where such are restricted or excluded by applicable law and such shall apply to the maximum extent permitted by applicable law.

In the event of any warranty claim, URC will, at its sole option, repair the URC equipment using new or comparable rebuilt parts, or exchange the URC equipment for new or rebuilt equipment. **In the event of a defect, these are the end user's exclusive remedies.**

All the URC equipment returned for service, exchange or repair require an RGA number. To obtain an RGA number, you must complete a Return Request Form which you may obtain by calling (914) 835-4484 or contacting URC at returnrequest@universalremote.com. To obtain warranty service, end user must deliver the URC equipment, freight prepaid, in its original packaging or packaging affording adequate protection to URC at 420 Columbus Avenue, Valhalla, NY 10595. It is end user's responsibility to backup any macro programming, artwork, software or other materials that may have been programmed into the unit. It is likely that such data, software, or other materials will be lost during service and URC will not be responsible for any such damage or loss. A dated purchase receipt, bill of sale, installation contract or other verifiable proof of purchase is required. For the URC equipment support and other important information, please visit URC's website available at www.universalremote.com or call the Customer Service Center at (914) 835-4484.

This limited warranty only covers the URC equipment issues caused by defects in material or workmanship during ordinary consumer use. It does not cover product issues caused by any other reason, including but not limited to product issues due to commercial use, acts of God, third-party installation, misuse, limitations of technology, or modification of or to any part of the URC equipment. This limited warranty does not cover the URC equipment sold as used, as is, refurbished, so called "B stock" or consumables (such as batteries). This limited warranty is invalid if the factory applied serial number has been altered or removed from the URC equipment. **This limited warranty specifically excludes the URC equipment sold by unauthorized resellers.**

With the exception of URC's IR-only, broad-based consumer remotes, none of URC's PC programmable remotes or any of our Total Control® whole-house equipment are authorized for online internet sales. Buying URC's PC programmable remotes or any of our Total Control® whole-house equipment online means buying equipment that does not have a URC's limited warranty. Such equipment is not eligible for URC tech support or software support, either.

2. URC'S Limitations of Liability

IN NO EVENT SHALL URC BE LIABLE FOR INDIRECT, SPECIAL, INCIDENTAL, EXEMPLARY, PUNITIVE OR CONSEQUENTIAL DAMAGES OF ANY KIND OR LOSS OF PROFITS OR BUSINESS OPPORTUNITY, EVEN IF URC IS ADVISED OF THE POSSIBILITY OF SUCH DAMAGES.

IN NO EVENT SHALL URC BE LIABLE FOR LOSS OF OR DAMAGE TO DATA, COMPUTER SYSTEMS OR COMPUTER PROGRAMS.

URC'S LIABILITY, IF ANY, FOR DIRECT DAMAGES OF ANY FORM SHALL BE LIMITED TO ACTUAL DAMAGES, NOT IN EXCESS OF AMOUNTS PAID BY END USER FOR THE URC EQUIPMENT.

IN NO EVENT SHALL URC BE LIABLE FOR ANY EVENTS BEYOND ITS CONTROL, INCLUDING ANY INSTANCE OF FORCE MAJEURE.

IN NO EVENT SHALL URC BE LIABLE FOR THE ACTS OR OMISSIONS OF END USER OR ANY THIRD PARTY.

THE LIMITATIONS OF LIABILITY MAY NOT APPLY TO END USER IN WHOLE OR IN PART, WHERE SUCH ARE RESTRICTED LIMITED OR EXCLUDED BY

APPLICABLE LAW AND SUCH SHALL APPLY TO THE MAXIMUM EXTENT PERMITTED BY APPLICABLE LAW.

URC SHALL NOT BE HELD RESPONSIBLE FOR THE STATEMENTS MADE BY OTHERS.

SOME STATES OR JURISDICTIONS DO NOT ALLOW THE EXCLUSION OR LIMITATION OF INCIDENTAL OR CONSEQUENTIAL DAMAGES, OR ALLOW LIMITATIONS ON HOW LONG AN IMPLIED WARRANTY LASTS, SO THE ABOVE LIMITATIONS OR EXCLUSIONS MAY NOT APPLY TO END USER. THIS LIMITED WARRANTY GIVES END USER SPECIFIC LEGAL RIGHTS AND END USER MAY HAVE OTHER RIGHTS WHICH VARY FROM STATE TO STATE OR JURISDICTION TO JURISDICTION.

End User Agreement

The terms and conditions of the End User Agreement available at www.universalremote.com/eua.php shall apply.

Federal Communication Commission Interference Statement

This equipment has been tested and found to comply with the limits for a Class B digital device, pursuant to part 15 of the FCC Rules. These limits are designed to provide reasonable protection against harmful interference in a residential installation. This equipment generates, uses and can radiate radio frequency energy and, if not installed and used in accordance with the instructions, may cause harmful interference to radio communications. However, there is no guarantee that interference will not occur in a particular installation. If this equipment does cause harmful interference to radio or television reception, which can be determined by turning the equipment off and on, the user is encouraged to try to correct the interference by one more of the following measures:

- ◆ Reorient or relocate the receiving antenna.
- ◆ Increase the separation between the equipment and receiver.
- ◆ Connect the equipment into an outlet on a circuit different from that to which the receiver is connected.
- ◆ Consult the dealer or an experienced radio/TV technician for help.

Warning!

Changes or modifications not expressly approved by the manufacturer could void the user's authority to operate the equipment.

Note : The manufacturer is not responsible for any Radio or TV interference caused by unauthorized modifications to this equipment. Such modifications could void the user's authority to operate the equipment.

FCC Caution

This device complies with Part 15 of the FCC Rules. Operation is subject to the following two conditions: (1) this device may not cause harmful interference, and (2) this device must accept any interference received, including interference that may cause undesired operation.

Any changes or modifications not expressly approved by the party responsible for compliance could void the authority to operate equipment.

Regulatory Information to the user

■ CE conformity Notice

Products with “CE” marking comply EMC Directive 2004/108/EC, issued by the commission of the European Community.


1) EMC Directive

- Emission : EN55022:2006+A1:2007
- Immunity : EN61000-3-2:2006+A2:2009
- Power : EN61000-3-3:1995+A1:2001+A2:2005

■ Declaration of Conformity

“Hereby, Universal Remote Control Inc. declares that this CAM-MC is in compliance with the Essential requirements and other relevant provisions of EMC Directive 2004/108/EC.”



Certification	CE
Type No.(Model No.)	CAM-MC
Batch/Serial No.	-
Power Rating	48.0V  0.06A

EU Declaration of Conformity

Manufacturer : OH SUNG Electronics Co., Ltd.
 Address : 181 GONG DAN-DONG, GUMI, GYEONG BUK, KOREA



We declare our sole responsibility that the product

Product : IP CAMERA

Model Number(s): CAM-MC

to which this declaration relates is in conformity with the **following standards**
 and therefore bears **CE marking** :

: EN 55022:2006+A1:2007 (Class B)

Information technology equipment-Radio disturbance characteristics-Limits and methods of measurement

: EN61000-3-2:2006+A2:2009

Limits for harmonic current emissions

: EN61000-3-3:2008

Limitation of voltage changes, voltage fluctuations and flicker in low-voltage supply systems

: EN 50130-4:2011

Alarm systems-Part 4: Electromagnetic compatibility -Product family standard: Immunity requirements for components of fire, intruder, hold up, CCTV, access control and social alarm systems

Following the provisions of the **applicable directives**

EMC Directive

2004/108/EC

amended by the **CE Marking Directive 93/68/EEC**

Name _____

Title _____

Authorized
person:

Date _____

Signature _____



Control the Experience.

500 Mamaroneck Avenue, Harrison, NY 10528

Phone: (914) 835-4484 Fax: (914) 835-4532

www.universalremote.com



OCE-0152A Rev 01