

Canon



The Digital Camcorder for Every Occasion

Mini DV



ELURA 70



ELURA 65

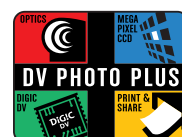


ELURA 60



DiGiC
DV

www.canondv.com



Life is full of special occasions that we wish we could savor forever. With Canon's new ELURA line of camcorders, the moment never has to end. Busy at work are Genuine Canon Optics and a robust Megapixel image sensor, so all the excitement of a graduation ceremony, the tears of joy on a bride's face, and the sweet music of a child's piano recital can be brilliantly captured and enjoyed for many years to come. Canon's exclusive DIGIC DV image processor produces stunning video and photo quality, allowing you to relive the magic and journey back in time. Create home movies with life-like clarity. And with the camcorder's Print & Share feature, beautiful digital photos can be direct printed for loved ones or sent to a computer by a single click of a button. Offering an ultra-slim design and an affordable price, they perfectly fit your hand and your budget. With so much versatility at your fingertips, Canon's ELURA series camcorders make it easy for the past to become your present.



DIGIC DV

DIGIC DV is a system for achieving superior video and photographic images. Canon's expertise in imaging and electronics is flawlessly blended together, resulting in outstanding performance. It offers substantial benefits in color reproduction. DIGIC DV makes it possible to achieve accurate color for both video and digital photos. Since video and photos have different color requirements, DIGIC DV utilizes two different color techniques to maximize video quality on a TV and still image quality for print or computer display.



VIC

Embracing the industry's latest and most sophisticated technology, Canon camcorders feature an exclusive connection circuit, called VIC. VIC is a virtual powerhouse. Traditionally, multiple chips were needed to perform the camcorder's input and output functions. However VIC manages it all with one single chip. The result is seamless connectivity whether you are connecting to a computer, TV, or VCR.



ELURA 70



ELURA 65



ELURA 60

DV Photo Plus

Canon's DV Photo Plus achieves premium quality video and photos by combining four features; Genuine Canon Optics, a Mega Pixel CCD image sensor, DIGIC DV image processor and Print & Share. The moment you watch video on a TV or hold a print in your hand, the difference is clear. DV Photo Plus unleashes the full digital imaging power of your Canon camcorder, promising a superior level of clarity, color, and excellence to video and photos.



Pictures simulated

Genuine Canon Optics:

18x Optical Zoom Lens (ELURA70)

16x Optical Zoom Lens (ELURA65)

14x Optical Zoom Lens (ELURA60)

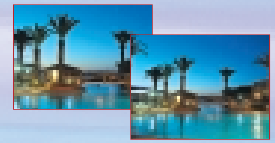
18x/360x

16x/320x

14x/280x

OPTICAL ZOOM/DIGITAL ZOOM

What sets a Canon camcorder apart from all the others? It's the only camcorder made by a company renowned for high-quality professional optics. Our vast expertise in designing and crafting precision lenses for 35mm and broadcast TV cameras also goes into every camcorder lens we make. The ELURA70, ELURA65 and ELURA60's optical zoom lens delivers superb definition and contrast, taking full advantage of the DV format. The digital zoom extends the camcorder's magnification revealing details too small to see with the naked eye. With the ELURA70, you can attach the supplied WA-34 Wide Attachment (0.7x), giving you a wide perspective for indoor shots or panoramic views.



When attaching the Wide Attachment 0.7x to the ELURA70

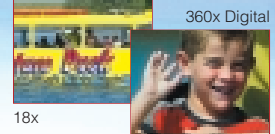


Image Stabilizer

A high quality image stabilization system corrects camcorder shake instantly, so your videos always look smooth, steady and natural even when shooting hand-held at full telephoto.

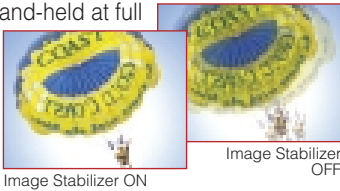


IMAGE STABILIZER

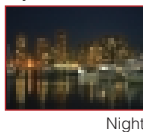
Program Auto Exposure

While the Easy Recording mode is fine for most shooting situations, the camcorder also includes additional pre-programmed auto exposure modes (Auto, Sports, Portrait, Spotlight, Sand & Snow and Low Light mode), each carefully designed to give you the best possible image results under special shooting conditions.



Night Mode

In the Night mode, the camcorder selects the ideal shutter speed and sensitivity combination to brighten up the scene, without sacrificing color. The Night mode can be easily activated by one press of the NIGHT MODE button. With the ELURA70 and ELURA65, you can also assign the Super Night or Night Plus mode to the NIGHT MODE button. In the Super Night mode, the assist lamp lights up automatically responding to the brightness of the subject. In the Night Plus mode, the assist lamp can be turned on, and stay on as long as you choose.



Skin Detail Function

When shooting close-ups of people, the camcorder automatically softens details to reduce the appearance of skin imperfections for a more complimentary appearance.

IEEE1394 DV Terminal

An IEEE1394-compliant DV terminal lets you connect the camcorder to a DV-compatible computer or another Canon DV camcorder. Transfer your digital movies to your computer's hard disk, edit your scenes, then use them to create high-impact Web sites, video e-mail, interactive CDs and DVDs, or a personal video album.



DV Messenger2

With DV Messenger2, you can use your Canon camcorder for Internet Video Chat with Microsoft Windows Messenger through IEEE1394. Control the zoom and focus of your camcorder or the person you are chatting with. Preview thumbnails and transfer photos. Watch and control the video playback of either camcorder - all from your computer. When used in conjunction with the camcorder's NETWORK mode, you can access your camcorder at home from a remote location. NETWORK mode also makes it possible to switch either camcorder's mode (CAMERA to VCR, TAPE to CARD) through the computer, instead of manually switching it on the camcorder.



Picture Transfer Protocol (PTP)

The camcorders support Picture Transfer Protocol (PTP) that enables data communication with a computer without the need to install dedicated driver software. This direct link enables the computer to access the camcorder as though it was an external card reader. This feature is available only with computers running Windows XP or Mac OS X (version 10.1 or later) operating system.

USB Terminal

Allows high-speed transfer of images from your SD Memory Card or MultiMediaCard to your computer. By using the USB cable and software provided, you can process and organize your images on your PC.



Included Software

The ELURA70, ELURA65 and ELURA60 Kit includes software for image management and editing: **ZoomBrowser EX** (Windows) and **ImageBrowser** (Macintosh) which let you easily download, browse, archive, and retouch your photos. Automatically resize images and attach them to e-mail, arrange them for printing, and add text.

Print/Share Button



The Print/Share button makes direct printing and downloading images to a computer easier than ever before. When the camcorder is connected to a printer, the Print/Share button lights up blue, letting you know that you can begin printing simply by pressing it once. You can also transfer a photo directly to your computer, with just a single press of the button.



Analog Line-In/Converter

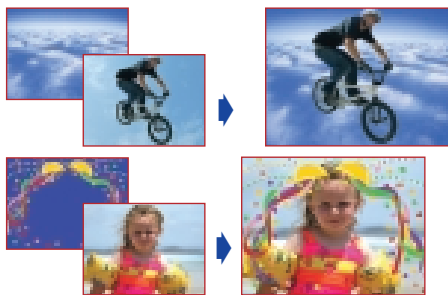
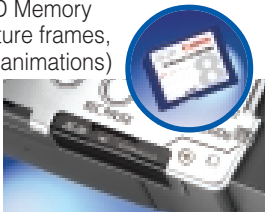
You can send an analog video signal from a TV, VCR or a camcorder into the ELURA70, ELURA65 or ELURA60 and record it onto a DV tape, or convert the analog signal into digital signal, for direct transfer to digital video devices or computers equipped with a IEEE1394 terminal*.

*The Analog to Digital Converter may not function depending on the software used.



SD Memory Card and MultiMediaCard

The ELURA70, ELURA65 and ELURA60 expand video possibilities with a built-in slot for an SD (Secure Digital) Memory Card or a MultiMediaCard, in addition to a MiniDV cassette. Easily transfer images to your PC directly from the camcorder using USB and IEEE1394. Produce effects not possible with just a cassette using the Card Mix Effects. Choose one of the sample images provided on the supplied SD Memory Card (such as picture frames, backgrounds and animations) and combine it with the live video recording.



SD MultiMediaCard

1.33 Megapixel* High Resolution Photos

The camcorders feature advanced image processing, for capturing stunning, 1.33 Megapixel (1280 x 960 pixels) photos onto the included memory card. They may be captured at a variety of different image qualities and compression sizes (Superfine/Fine/Normal).



* Total pixels

Motion JPEG

You can record movie clips in Motion JPEG format onto the memory card, for clear images and smooth playback. You may choose to record in 320 x 240 pixels or 160 x 120 pixels. Best of all, you can record for the full length of the SD Memory Card*. If you like, you can even copy video from the Mini DV tape to the card, making it easy to attach a mini-movie to an e-mail or post on the web.



*When using MultiMediaCards, movie clips are limited to 10 seconds in 320 x 240 and 30 seconds in 160 x 120.

High Resolution 16:9 Widescreen Mode (ELURA70/ELURA65)

You can record high-resolution video in the 16:9 format for playback on widescreen TVs. Unlike systems which only record a vertically expanded picture, the ELURA70 and ELURA65 use the full width of the CCD, retaining image quality and providing a larger horizontal angle of view at the wide end.

*The ELURA60 features only standard 16:9 Wide Screen Mode.



Selectable Focusing Points

Sometimes, the subject we want to photograph is not in the center of the frame. Choose from one of three focusing points to automatically put the subject you want into sharp focus.



Simultaneous Photo Recording

While recording video, the camcorders are able to simultaneously capture VGA quality (640 x 480 pixels) digital photos onto a memory card. This is perfect for those who want to capture e-mail ready photos, without interruption.

Direct Print Choices

The camcorders offer flexible connectivity with a variety of printers. Connect your camcorder to any Canon CP-Series Card Photo Printer or Canon Bubble Jet Direct Printer, without even connecting a computer. A single cable connects the



PictBridge



Exif Print

The camcorders support Exif Print (2.2), a worldwide standard that enhances communication between digital cameras and printers. At the time of shooting, vital camcorder settings and scene data are recorded with the image, resulting in realistic and reliable color reproduction. Poor lighting or mistakes can also be corrected, allowing photos to be even better than the originals.



Continuous Shooting Mode

The camcorders feature a continuous shooting mode, allowing you to capture a rapid succession of 1.33 Megapixel photos. Choose from normal-speed (3 frames per second) or high-speed (5 frames per second) continuous shooting. This function is linked with the flash of the optional VFL-1, so continuous shooting is possible even in dark locations.

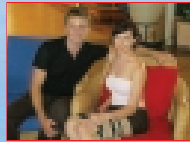
Auto Exposure Bracketing

This feature allows you to record three photos (normal, underexposed and overexposed) simply by pressing the PHOTO button once.

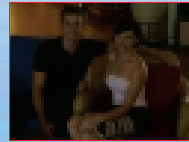


Advanced Accessory Shoe (ELURA70/ELURA65)

Want to add an accessory microphone or video light? Simply slide Canon's VFL-1 Video Flash Light, DM-50 Directional Stereo Microphone or VL-3 Video Light into the accessory shoe; the camcorder will automatically provide power and connections. No external power or cables are required.



VFL-1 Flash ON



VFL-1 Flash OFF

Digital Effects

Show your creativity by using the special effects and digital faders available with the camcorders. A wide selection of faders and special effects will add visual appeal and greater imaging variety.



Faders

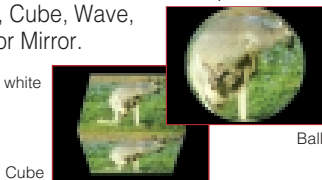
Add a variety of transitions to your movies with a fade to or from black. Choose from Fade Trigger, Wipe, Corner, Jump, Flip, Puzzle, Zigzag, Beam and Tide.



Special Effects

For a more creative look, you can switch on the following digital effects during recording or playback: Art, Black & White, Sepia, Mosaic, Ball, Cube, Wave, Color Mask or Mirror.

* In Card mode: Only black and white is available.



Multi-image Screen

Divide your screen into four, nine or sixteen pictures with the Image Capture function. You can choose the speed at which the images are captured: Manual, Slow, Moderate or Fast.



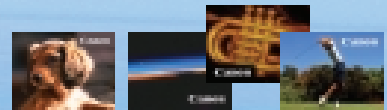
StitchAssist

By using the StitchAssist Mode, you can create magnificent panoramas. Shoot your landscape, and transfer them to your computer. Then simply select and arrange your images in the correct order, and the supplied PhotoStitch software does the rest, aligning, overlapping and cropping the separate images to form one ultra-wide panoramic still image.



My Camera Function

Personalize your camcorder by customizing the start-up image and camcorder operation sounds. You can also choose a start-up image from the included software CD or use your own digital recordings.



End Search

Use this function to locate the end of the last recorded scene. The camcorder fast-forwards the tape, plays back the last few seconds of the recording and stops the tape.

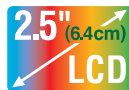
Selectable Display Languages

You can choose from the following languages: English, French, Spanish, German, Italian, Russian, Chinese and Japanese. The date format can also be selected.



Flexible LCD View Screen and Color Viewfinder

The bright 2.5" LCD view screen makes it easy to compose sensational shots without having to squint into the viewfinder. You can rotate the screen for high-or low-angle shots, or turn it around 180° to record yourself. When you're done shooting, the screen is perfect for reviewing your scenes.



- Lithium Ion Battery
- S-Video Input/Output
- Microphone Terminal (ELURA70/ELURA65)
- Remote Control Included
- Built-in Speaker
- Audio Dubbing
- Self-Timer
- Date Search
- Time Code/Data Code
- Record Search & Review
- Confirmation Beep
- Zero Set Memory
- World Clock



Optional Accessories

Lithium Ion Battery Packs

Extra batteries for use with the camcorders.

Battery pack	Maximum recording time using viewfinder	Maximum recording time using LCD screen
NB-2L (single-capacity)	1hr.35min.	1hr.15min.
NB-2LH (single-capacity)	1hr.55min.	1hr.30min.
BP-2L12 (single-capacity)	3hr.20min.	2hr.30min.
BP-2L14 (double-capacity)	4hr.	3hr.10min.

CB-2LT Battery Charger

Use the battery charger for charging the battery packs. It plugs directly into a power outlet without a cable.

CBC-NB2 Car Battery Charger

Use the car battery charger to charge battery packs on the move.

S-150 S-Video Cable

Attaches to the Advanced Accessory Shoe for cable-free operation. As a video light, it can turn on and off automatically. As a flash, it can fire automatically or act as a pre-flash to reduce the red-eye effect.

VL-3 Video Light***

This 3 W light attaches to the Advanced Accessory Shoe for cable-free operation. Continuous on and auto/off settings. Powered by the camcorder's power source.

DM-50 Directional Stereo Microphone***

Attaches to the Advanced Accessory Shoe for cable-free operation. Picks up shotgun or shotgun + surrounding sound. Powered by the camcorder's power source. Wind shields included.

TL-H34 Tele-converter

Increases the focal length by 1.5x. Image resolution may be lower at the telephoto-side.

VL-10Li Battery Video Light

Powerful 10 W illumination. A BP-900 series battery attaches directly, so operation is cable-free.**

WD-H34 Wide-converter

Increases the wide angle coverage by 0.7x.

FS-34U Filter Set

Includes neutral density (ND 8) filter and MC protector.

WS-20 Wrist Strap

SC-2000 Soft Carrying Case

SC-1000 Soft Carrying Case

SC-A50 Soft Carrying Case

DVM-E60/DVM-E80 Digital Video Cassette

DVM-CL Digital Video Head Cleaning Cassette



This mark identifies genuine Canon video accessories. When you use Canon video equipment, we recommend Canon-brand accessories or products bearing the same mark.

Availability differs from area to area.
* Cannot be used to power the camcorder directly.
** A 900 series charger is required.
*** ELURA70/ELURA65 only.

Specifications

Video Recording System	2 rotary heads, helical scanning DV system (consumer digital VCR SD system), digital component recording
Audio Recording System	PCM digital sound: 16 bit (48 kHz/2ch); 12bit (32 kHz/4ch)
Television System	EIA standard (525 lines, 60 fields) NTSC color signal
Image Sensor	1/4.5-inch CCD, approx. 1,330,000 pixels Effective pixels: tape approx. 690,000 pixels card approx. 1,230,000 pixels
Tape Format	Video cassettes bearing the "MiniDV" mark
Tape Speed	SP: 0.74 ips (18.81 mm/s), LP: 0.49 ips (12.56 mm/s)
Maximum Recording (80 min. cassette)	SP: 80 min., LP: 120 min.
Fast Forward/Rewind	Approx. 2 min. 20 sec. (60 min. cassette)
LCD screen	2.5-inch TFT color, approx. 123,000 pixels
Viewfinder	0.33-inch TFT color, approx. 113,000 pixels
Microphone	Stereo electret condenser microphone
Lens	ELURA70: f=3.5-63, f/1.8-3.4, 18x power zoom ELURA65: f=3.5-56, f/1.8-3.3, 16x power zoom ELURA60: f=3.5-49, f/1.8-3.1, 14x power zoom
Lens Configuration	10 elements in 8 groups
Filter Diameter	34 mm
AF System	TTL autofocus, manual focusing possible
Minimum Focusing Distance	3.3 ft (1 m); 0.39 in. (1 cm) on maximum wide angle
White Balance	Auto white balance, pre-set white balance (indoor, outdoor) or custom white balance
Minimum Illumination	1.8 lx (using the night mode)
Recommended Illumination	More than 100 lx
Maximal Shutter Speed	1/2000 (1/250 in CARD CAMERA mode)
Image Stabilization	Electronic
AV Terminal	ø3.5 mm stereo mini-jack Video: 1 Vp-p/75 ohms unbalanced Audio output: -10 dBV (47 kohm load)/3 kohms or less Audio input: -10 dBV/40 kohms or more
DV Terminal (compliant)	Special 4-pin connector (IEEE1394)
S-video Terminal	1 Vp-p/75 ohms (Y signal), 0.286 VP-p/75 ohms (C signal)
Microphone Terminal (ELURA70/ELURA65)	ø3.5 mm stereo mini-jack -57 dBV (with 600 ohm mic)/5 kohms or more
Headphone Terminal	ø3.5 mm stereo mini-jack
Power supply (rated)	7.4 V DC

Power consumption (AF on)	2.6 W (using viewfinder), 3.3 W (using LCD screen)
Operating temperature	32° - 104° F (0° - 40° C)
Recording media	SD Memory Card, MultiMediaCard
Number of recording pixels	Still image: 1280 x 960 pixels, 640 x 480 pixels Movie: 320 x 240 pixels, 160 x 120 pixels
File format	Design rule for Camera File system (DCF), Exif 2.2 compliant, Digital Print Order Format (DPOF) compliant (only images marked for printing or transfer)
Image recording format	Still image: JPEG (compression: Superfine/Fine/Normal) Movie: AVI (image data: Motion JPEG; audio data: WAVE (monaural))
Estimated SD Memory Card SDC-8M capacities*	1280 x 960: Superfine 6 images/Fine 10 images/Normal 18 images, 640 x 480: Superfine 34 images/Fine 50 images/Normal 84 images *The actual number varies depending on the images. Sample images recorded on the supplied SD Memory Card are to be included in the total number.
USB terminal	mini-B (USB 2.0 compliant)
Dimensions	3.1 x 2.9 x 5.1 in. (78 x 74 x 130 mm) excluding protrusions
Weight (camcorder body only)	approx. 1.1 lb. (500g)

System requirements for supplied software

Digital Video Software
Interface: USB: only preinstalled Windows 98/Windows Me/Windows 2000/Windows XP systems with built-in USB ports, or only systems equipped with genuine Apple-brand built-in USB interfaces.

Operating System	CPU	RAM
Windows	Windows 98/Windows Me/Windows 2000	150MHz or better 64MB or more
Macintosh	Windows XP Mac OS 9.0-9.2 Mac OS X (10.1/10.2)	300MHz or better 128MB or more PowerPC 64MB or more PowerPC 128MB or more
Free hard disk space		
Windows	ZoomBrowser EX PhotoStitch DV TWAIN Driver DV WIA Driver	200MB or more 40MB or more 25MB or more 25MB or more
Macintosh	ImageBrowser PhotoStitch	120MB or more 30MB or more

DV Network Software

Interface: IEEE1394: only preinstalled Windows XP Home Edition or Windows XP Professional systems with built-in IEEE1394 terminal

CPU	500 MHz or better (800 MHz or better recommended)
RAM	128 MB or more (256 MB or more recommended)
Free Hard Disk Space	AV/C Camera Storage Subunit-WIA Driver 1 MB or more DV Messenger2 100 MB or more
Other	Windows Messenger Version 4.5/4.6/4.7

- To use DV Messenger, it is required that Windows Messenger 4.5/4.6/4.7 operates correctly.
- It is required that Windows Messenger operates and the voice or video conversation can be used with a digital camcorder. Please consult Microsoft for details.
- If you are using a router, make sure it is an UPnP (Universal Plug and Play) compatible router. For details, consult your Internet service provider, telephone carrier, or refer to the manual of the router.
- We recommend using a broadband Internet connection.
- The communication quality and connectivity depend on the congestion of the Internet line and service.
- This product does not guarantee a certain communication quality.

THE CANON ELURA70/ELURA65/ELURA60 KIT



- ELURA70, ELURA65 or ELURA60
- BP-2L14 Battery Pack (ELURA70)
- NB-2LH Battery Pack (ELURA65/ELURA60)
- CA-570 Compact Power Adapter
- STV-250N Stereo Video Cable
- WA-34 Wide Attachment (ELURA70)
- SS-900 Shoulder Strap
- WL-DB3 Wireless Controller
- SDC-8M SD Memory Card
- IFC-300PCU USB Cable
- DIGITAL VIDEO SOLUTION DISK for Windows
- DIGITAL VIDEO SOLUTION DISK for Macintosh

www.canondv.com



Printed on 100% reused paper.

Errors and omissions excepted. Weight and dimensions are approximate. Subject to change without notice. Canon and Bubble Jet are registered trademarks of Canon Inc. The SD logo is a trademark. The MiniDV logo is a trademark. Microsoft and Windows are either registered trademarks or trademarks of Microsoft Corporation in the United States and/or other countries. Macintosh and Mac OS are trademarks of Apple Computer, Inc., registered in the United States and other countries. Other names and products not mentioned above may be registered trademarks or trademarks of their respective companies.

Warning: Unauthorized recording of copyrighted materials may infringe on the rights of copyright owners and be contrary to copyright laws.

Canon

U.S.A.	CANON U.S.A., INC. Consumer Information Center toll-free at 1-800-828-4040 (in U.S.A.) One Canon Plaza, Lake Success, NY 11042 USA
CANADA	CANON CANADA INC. Consumer Information Center toll-free at 1-800-828-4040 (in Canada) 6390 Dixie Road, Mississauga, Ontario L5T 1P7
MEXICO	CANON MEXICANA, S. DE R. L. DE C. V. Periferico Sur No.4124 Col. Ex-Rancho de Anzaltdo C.P. 01900 Mexico, D.F.
CENTRAL Y SURAMERICA	CANON LATIN AMERICA, INC. 703 Waterford Way, Suite 400 Miami FL 33126 USA
ASIA	CANON HONGKONG COMPANY LTD. 19/F., The Metropolis Tower, 10 Metropolis Drive, Hunghom, Kowloon, Hong Kong

0042W627
PUB. DCE-147
0104W100

©CANON INC. 2004

PRINTED IN U.S.A.
IMPRIME AUX ETATS-UNIS