

Makita

アメリカ

Belt Sander

100 mm (4") MODEL 9401

INSTRUCTION MANUAL



Specifications

Belt size	Belt speed	AMPS (115 V)	Overall length	Net weight	Power supply cord
100 mm x 610 mm (4") x (24")	350 m (1,150 ft.) /min.	8.5 A	374 mm (14-3/4")	7.3 kg (16.1 lbs)	5 m (16.4 ft.)

- Manufacturer reserves the right to change specifications of parts and accessories without notice.
- Note: Specifications of parts and accessories may differ from country to country.

IMPORTANT SAFETY INSTRUCTIONS

(For All Tools)

WARNING: WHEN USING ELECTRIC TOOLS, BASIC SAFETY PRECAUTIONS SHOULD ALWAYS BE FOLLOWED TO REDUCE THE RISK OF FIRE, ELECTRIC SHOCK, AND PERSONAL INJURY, INCLUDING THE FOLLOWING:

READ ALL INSTRUCTIONS.

- 1. KEEP WORK AREA CLEAN.** Cluttered areas and benches invite injuries.
- 2. CONSIDER WORK AREA ENVIRONMENT.** Don't use power tools in damp or wet locations. Keep work area well lit. Don't expose power tools to rain. Don't use tool in presence of flammable liquids or gases.
- 3. KEEP CHILDREN AWAY.** All visitors should be kept away from work area. Don't let visitors contact tool or extension cord.
- 4. STORE IDLE TOOLS.** When not in use, tools should be stored in dry, and high or locked-up place — out of reach of children.
- 5. DON'T FORCE TOOL.** It will do the job better and safer at the rate for which it was intended.
- 6. USE RIGHT TOOL.** Don't force small tool or attachment to do the job of a heavy-duty tool. Don't use tool for purpose not intended.
- 7. DRESS PROPERLY.** Don't wear loose clothing or jewelry. They can be caught in moving parts. Rubber gloves and non-skid footwear are recommended when working outdoors. Wear protective hair covering to contain long hair.
- 8. USE SAFETY GLASSES.** Also use face or dust mask if cutting operation is dusty.
- 9. DON'T ABUSE CORD.** Never carry tool by cord or yank it to disconnect from receptacle. Keep cord from heat, oil, and sharp edges.
- 10. SECURE WORK.** Use clamps or a vise to hold work. It's safer than using your hand and it frees both hands to operate tool.
- 11. DON'T OVERREACH.** Keep proper footing and balance at all times.
- 12. MAINTAIN TOOLS WITH CARE.** Keep tools sharp and clean for better and safer performance. Follow instructions for lubricating and changing accessories. Inspect tool cords periodically and if damaged, have repaired by authorized service facility. Inspect extension cords periodically and replace if damaged. Keep handles dry, clean, and free from oil and grease.
- 13. DISCONNECT TOOLS.** When not in use, before servicing, and when changing accessories, such as blades, bits, cutters.

14. **REMOVE ADJUSTING KEYS AND WRENCHES.** Form habit of checking to see that keys and adjusting wrenches are removed from tool before turning it on.
15. **AVOID UNINTENTIONAL STARTING.** Don't carry tool with finger on switch. Be sure switch is OFF when plugging in.
16. **EXTENSION CORDS.** Make sure your extension cord is in good condition. When using an extension cord, be sure to use one heavy enough to carry the current your product will draw. An undersized cord will cause a drop in line voltage resulting in loss of power and overheating. Table 1 shows the correct size to use depending on cord length and nameplate ampere rating. If in doubt, use the next heavier gage. The smaller the gage number, the heavier the cord.

TABLE 1 MINIMUM GAGE FOR CORD SETS

			Total Length of Cord in Feet			
			0 – 25	26 – 50	51 – 100	101 – 150
Ampere Rating More Than	–	Not More Than	A W G			
			0	–	6	18
6	–	10	18	16	14	12
10	–	12	16	16	14	12
12	–	16	14	12	Not Recommended	

17. **OUTDOOR USE EXTENSION CORDS.** When tool is used outdoors, use only extension cords intended for use outdoors and so marked.
18. **STAY ALERT.** Watch what you are doing, use common sense. Don't operate tool when you are tired.
19. **CHECK DAMAGED PARTS.** Before further use of the tool, a guard or other part that is damaged should be carefully checked to determine that it will operate properly and perform its intended function. Check for alignment of moving parts, binding of moving parts, breakage of parts, mounting, and any other conditions that may affect its operation. A guard or other part that is damaged should be properly repaired or replaced by an authorized service center unless otherwise indicated elsewhere in this instruction manual. Have defective switches replaced by authorized service center. Don't use tool if switch does not turn it on and off.
20. **GUARD AGAINST ELECTRIC SHOCK.** Prevent body contact with grounded surfaces. For example; pipes, radiators, ranges, refrigerator enclosures.
21. **REPLACEMENT PARTS.** When servicing, use only identical replacement parts.
22. **POLARIZED PLUGS.** To reduce the risk of electric shock, this equipment has a polarized plug (one blade is wider than the other). This plug will fit in a polarized outlet only one way. If the plug does not fit fully in the outlet, reverse the plug. If it still does not fit, contact a qualified electrician to install the proper outlet. Do not change the plug in any way.

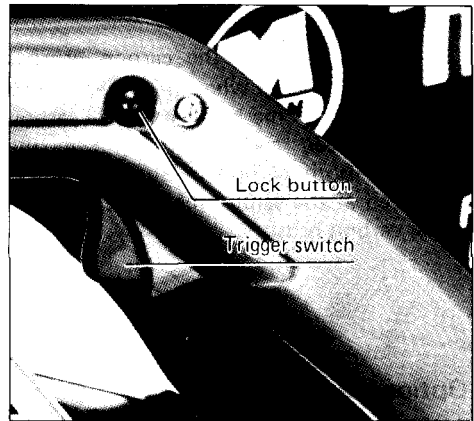
VOLTAGE WARNING: Before connecting the tool to a power source (receptacle, outlet, etc.) be sure the voltage supplied is the same as that specified on the nameplate of the tool. A power source with voltage greater than that specified for the tool can result in **SERIOUS INJURY** to the user — as well as damage to the tool. If in doubt, **DO NOT PLUG IN THE TOOL**. Using a power source with voltage less than the nameplate rating is harmful to the motor.

SAVE THESE INSTRUCTIONS.

How to use

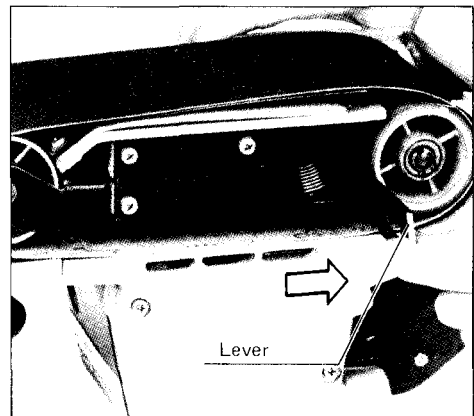
1. Switch action

To start the tool, simply pull the trigger. Release the trigger to stop. For continuous operation without having to keep your finger on the trigger, just pull the trigger and then push in the lock button with your thumb. To stop the tool from lock position, just pull the trigger again and release it.



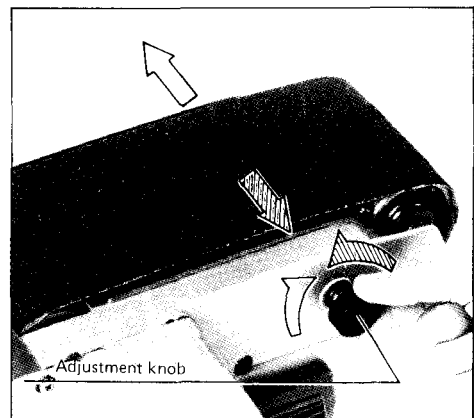
2. Mounting belt

With the tool unplugged and the lever pulled out all the way, slip the belt over the rollers with the arrow direction on the belt the same as that of tool revolution (or belt life is shortened).



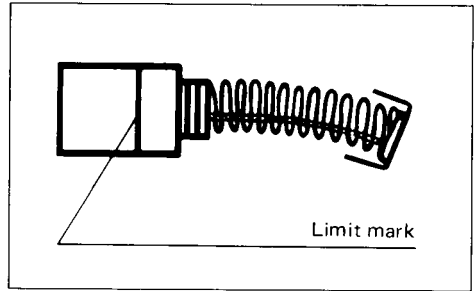
3. Belt adjustment

Flip sander over on its back and use the adjustment knob to obtain equal tension of belt over the front and back rollers. Then plug in sander and switch it on, using the adjustment knob to center the belt as it runs over the rollers. Failure to adjust belt properly over rollers can result in frayed belt edges.



● **Replacing carbon brushes**

Remove and check the carbon brushes regularly. Replace when they wear down to the limit mark. Keep the carbon brushes clean and free to slip in the holders. Both carbon brushes should be replaced at the same time. Use only identical carbon brushes.



Optional accessories

CAUTION: The accessories specified in this manual are recommended for use with your Makita Belt Sander. The use of any other accessory might be hazardous.

● **Abrasive belts**

Belt type and use

AA – For wood, iron and steel



Grit	Part No.	Use	Sheets per pack
AA40	742320-3	Coarse	5
AA60	742321-1		
AA80	742322-9	Medium	
AA100	742323-7		
AA120	742324-5	Fine	
AA150	742325-3		
AA240	742326-1		

● **Carbon plate**

Part No. 423029-3



● **Steel plate**

Part No. 342328-3



● **Step**

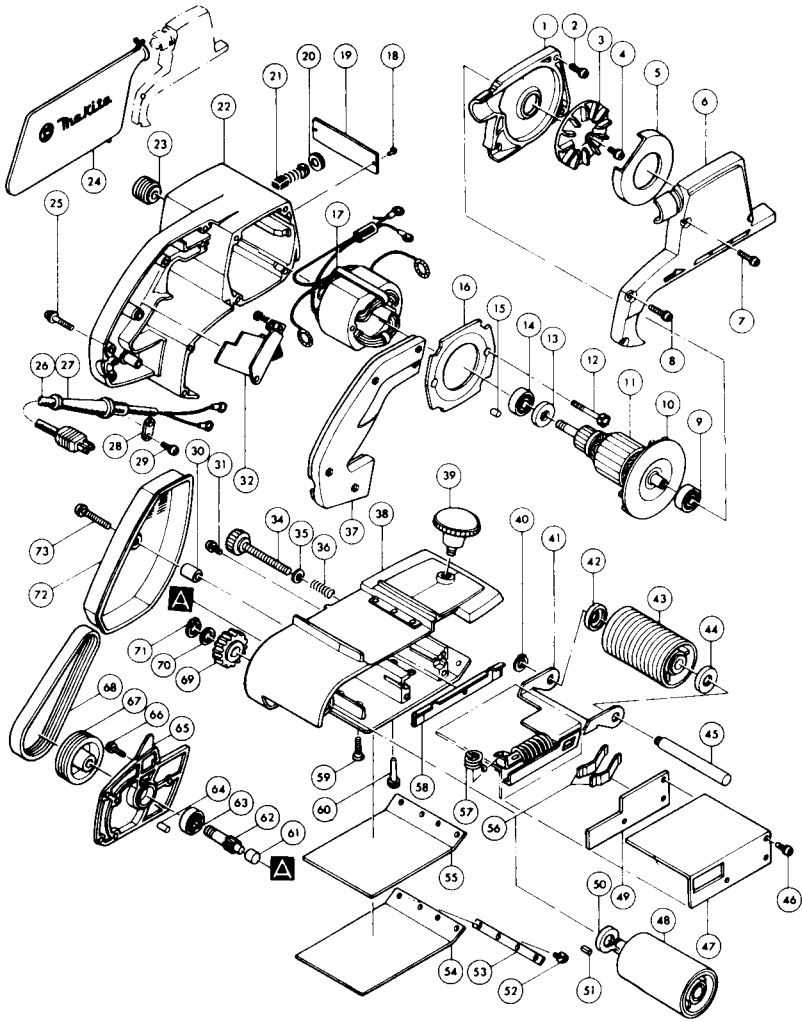
Part No. 342332-2



CAUTION:

Install the steel plate so that THE EDGE OF THE STEEL PLATE WILL NOT PROTRUDE FROM THE EDGE OF THE FRAME ON THE SIDE WITH THE BELT INSTALLING LEVER. IF THE PLATE IS ALLOWED TO PROTRUDE, IT MAY CAUSE INJURY.

100 mm (4") BELT SANDER Model 9401



Note: The switch, noise suppressor, plug and other part configurations may differ from country to country.

ITEM NO.	NO. USED	DESCRIPTION	ITEM NO.	NO. USED	DESCRIPTION
MACHINE			MACHINE		
1	1	Dust Collector Bracket	39	1	Knob 55
2	4	P. H. Screw M5x18 (With Washer)	40	1	Retaining Ring S-12
3	1	Fan 74	41	1	Tension Roller Arm
4	1	P. H. Screw M5x12 (With Washer)	42	1	Cup Washer 12
5	1	Separator	43	1	Tension Roller (With Plane Bearing 12 & Sponge Sheet)
6	1	Dust Collector Cover	44	1	Cup Washer 12
7	2	P. H. Screw M5x25 (With Washer)	45	1	Tension Roller Shaft
8	2	P. H. Screw M5x28 (With Washer)	46	3	P. H. Screw M5x18 (With Washer)
9	1	Ball Bearing 6200LLB	47	1	Base Cover
10	1	Fan 90	48	1	Driving Roller
11	1	ARMATURE ASSEMBLY (Assembled Items 9, 10, 11, 13 & 14)	49	1	Balance Plate
12	2	H. Bolt M5x45 (With Washer)	50	1	Cup Washer 12
13	1	Insulation Washer	51	1	Key 4
14	1	Ball Bearing 6200LLB	52	4	P. H. Screw M4x10 (With Washer)
15	1	Rubber Pin 4	53	1	Strap Washer
16	1	Baffle Plate	54	1	Steel Plate
17	1	FIELD ASSEMBLY (With Garter Spring x 2)	55	1	Cork Rubber Plate
18	2	Rivet 0-5	56	2	Leaf Spring
19	1	Name Plate	57	1	Torsion Spring 18
20	2	Brush Holder Cap	58	1	Edge Slider
21	2	Carbon Brush	59	6	C. H. Screw M5x18
22	1	Motor Housing (With Brush Holder x 2 & S. Screw M5x8 x 2)	60	1	Support Pin
23	1	V-Pulley 6-24L	61	1	Needle Bearing 810
24	1	Dust Bag	62	1	Helical Gear 10
25	5	P. H. Screw M4x30 (With Washer)	63	1	Ball Bearing 6200LLB
26	1	CORD ASSEMBLY (Assembled Cord, Plug & Cord Guard)	64	1	Rubber Pin 4
27	1	Cord Guard	65	1	Gear Cover
28	1	Strain Relief	66	5	P. H. Screw M5x18 (With Washer)
29	2	P. H. Screw M4x18 (With Washer)	67	1	V-Pulley 6-55.7
30	1	Sleeve 6	68	1	Poly V-Belt 6-355
31	1	P. H. Screw M5x16 (With Washer)	69	1	Helical Gear 42
32	1	Switch	70	A.R.	T. Washer 12
34	1	Screw M8x72	71	1	Retaining Ring S-12
35	1	F. Washer 8	72	1	Belt Cover
36	1	Compression Spring 9	73	1	P. H. Screw M5x40 (With Washer)
37	1	Handle Cover	ACCESSORIES		
38	1	Frame (With Plane Bearing 12 & Sponge Sheet)	400	1	Abrasive Belt

Note: The Switch, noise suppressor, plug and other part specifications may differ from country to country.



MAKITA LIMITED ONE YEAR WARRANTY

Warranty Policy

Every Makita tool is thoroughly inspected and tested before leaving the factory. It is warranted to be free of defects from workmanship and materials for the period of ONE YEAR from the date of original purchase. Should any trouble develop during this one-year period, return the COMPLETE tool, freight prepaid, to one of Makita's Factory or Authorized Service Centers. If inspection shows the trouble is caused by defective workmanship or material, Makita will repair (or at our option, replace) without charge.

This Warranty does not apply where:

- repairs have been made or attempted by others;
- repairs are required because of normal wear and tear;
- The tool has been abused, misused or improperly maintained;
- alterations have been made to the tool.

IN NO EVENT SHALL MAKITA BE LIABLE FOR ANY INDIRECT, INCIDENTAL OR CONSEQUENTIAL DAMAGES FROM THE SALE OR USE OF THE PRODUCT. THIS DISCLAIMER APPLIES BOTH DURING AND AFTER THE TERM OF THIS WARRANTY.

MAKITA DISCLAIMS LIABILITY FOR ANY IMPLIED WARRANTIES, INCLUDING IMPLIED WARRANTIES OF "MERCHANTABILITY" AND "FITNESS FOR A SPECIFIC PURPOSE," AFTER THE ONE-YEAR TERM OF THIS WARRANTY.

This Warranty gives you specific legal rights, and you may also have other rights which vary from state to state. Some states do not allow the exclusion or limitation of incidental or consequential damages, so the above limitation or exclusion may not apply to you. Some states do not allow limitation on how long an implied warranty lasts, so the above limitation may not apply to you.

Makita Corporation

3-11-8, Sumiyoshi-cho,
Anjo, Aichi 446 Japan

883080C061

PRINTED IN JAPAN
1992 — 8 — N