

DV900 Black Box Vehicle Video Recorder

User Manual



2011 JAN. V1.0



Table of Contents

A. Features	1
B. Specification.....	2
C. Structure of Product	3
D. Dimension.....	4
E. Installation Guide.....	5
F. Led Indicator Instruction.....	7
G. Software Player Instruction	8
H. Formatting Memory Card	13
I. Caution	14
J. Troubleshooting	14

A. Features

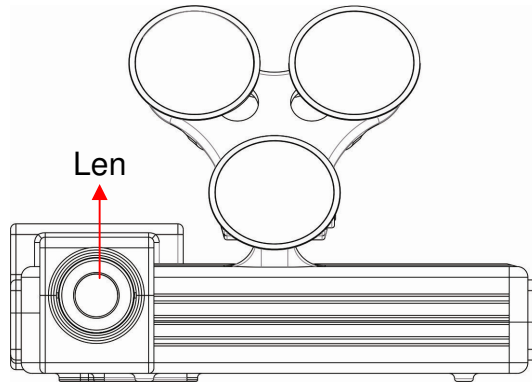
1. Ideal for personal car, taxi, trucks and buses.
2. Easy to install. Small in size to prevent blocking the driver's view.
3. Plug-n-Play. It can be recorded traffic information and outside driving conditions and inside sounds simultaneously.
4. 4mm view angle 90 degrees(optional lenses M12)
5. Store with Micro-SDHC Card (recommend to use Class4 above grade.)
6. Image data stored in Micro-SDHC Card can be completely against the vehicle moving in the shock.
7. No needs to operate when plug the card to start recording with power.
8. The full recording time and date can be showing in the monitor directly Overall Quick Search Event Log.
9. Ending File in Particular Format Saved Fine in Condition of Power Cut No Battery
10. Professional file formats, without built-in lithium battery, no needs to afraid of heat and bursting concerns, it is the real black box.
11. Using professional-grade compression engine with data files can't be modified to construct the best recorder.
12. Without any electromagnetic radiation or any electromagnetic interference, the car will not interfere with GPS or wireless devices.
13. Using OBD2 connect to vehicle's ECU communication, plug and play. Traffic information can be translated to Excel file for traffic accident analysis

B. Specifications

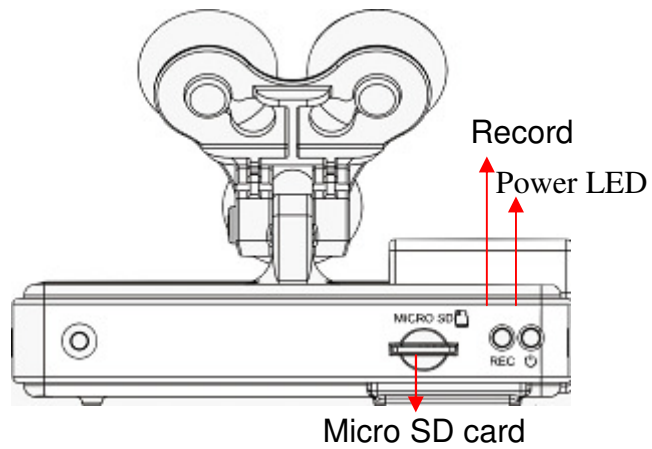
Item	Specification
Chipset	H.264 Image compression chip
Sensor Device	VGA CMOS Sensor
View Angle	4mmLens with view angle 90 degrees(optional for M12)
Voltage	Start transient voltage $5V \pm 5\%$
Operating Temp.	$-10^{\circ}\text{C} \sim 70^{\circ}\text{C}$
Storage Device	Silicon Power or Transcend Micro SDHC card Class 4 or above, (min capacity 4G above)
Recording Frame	640x480 Highest 30fps(NTSC) / 25fps(PAL)
Recording content	Date, time, image, sound data,
Storage Device	Specific format for specific software player.
Microphone	Built-in microphone
Time Setup	To set the time with Player in the micro SD card
Input and output device	(a)TV out(1 Vp-p composite video output, 75ohms). (b) Red Light: recording. (c) Green light: Power Note: The system is divided into NTSC / PAL both.
Accessories	A. EDR interpreter (support 25 protocols/ 500 car models) B. OBD2 cable C. TV out cable D. User manual E. CD (Contains software player & manual)
Description	We suggest to format Micro SDHC card first with Player and then put the card to record. Also the machine E26 could format Micro SDHC card automatically with a few minutes without interruption.
Important notice	Memory card formatted using the playback software, windows will recognize the remaining capacity about 80MB for copy the playback software to memory card.

C. Structure of Product

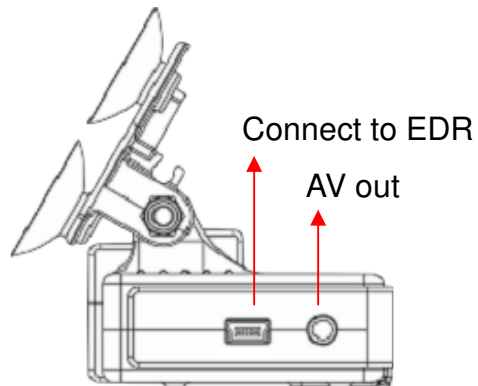
Front View



Back view

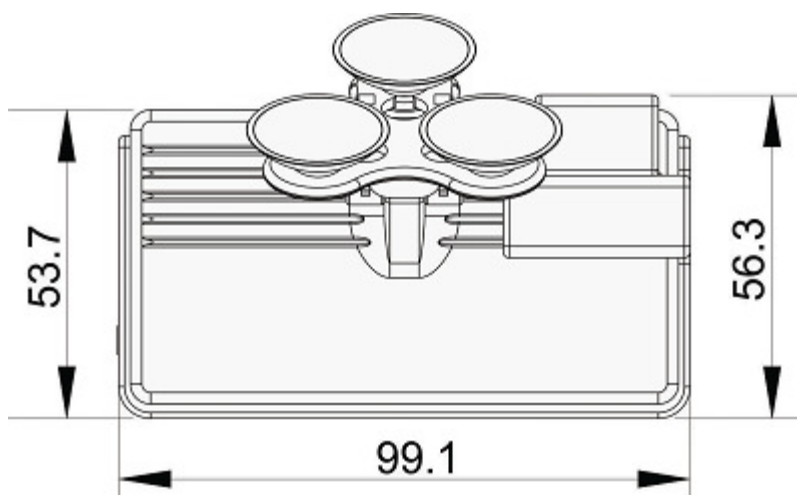
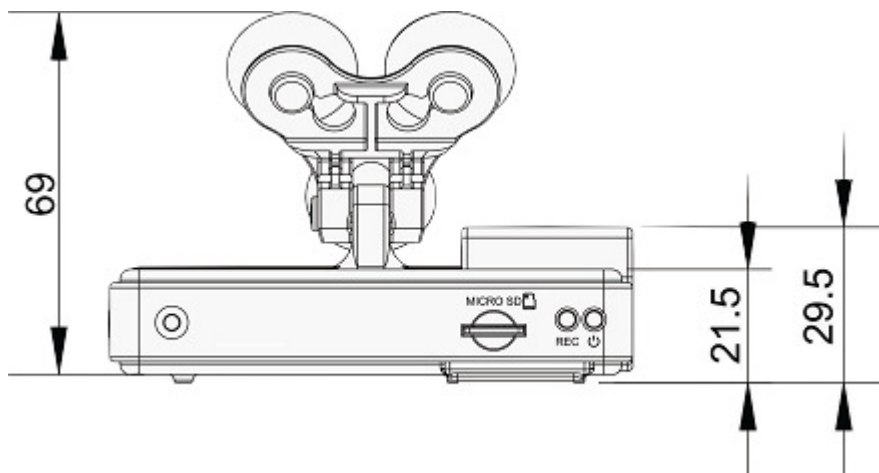


Side view



D. Dimension

Unit : mm



E. Installation Guide

1. Make the bracket facing upward.



2. Assemble the sucking disc and Micro SD card.



3. Set up the machine in proper position.



4. Adjust the viewing angle.



5. Install Interpreter: find OBD2 connector & plug in. Use DVR cable to connect SDVR with interpreter.



OBD2 Cable



DVR Cable



Interpreter

6. Learning Interpreter



RESET
Button

6.1 Feature

- Automatically searches for protocols.
- RESET button for clear protocol memory.
- Provide speed, rpm, throttle, battery voltage, engine loading, Emergency Braking, DTC, Distance and temperature message.
- OBD TX LED: indicate interpreter send data to vehicle.
- OBD RX LED: indicate interpreter receive data from vehicle response.
- DATA OUT: indicate interpreter send data out to SDVR.

6.2 Learning protocol :

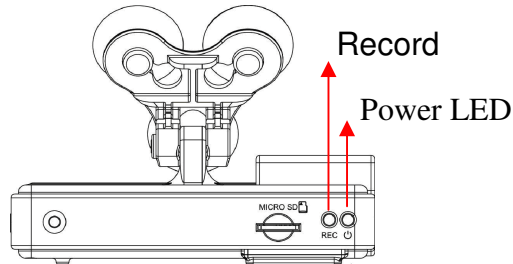
6.2.1 ACC ON, do not start engine.

6.2.2 The interpreter start to learn protocol, in the same time power LED lighting, and OBD TX led flash every one second. In case learning is successful, OBD2 TX, RX and RS232 LED will flash to indicate data transfer status, the correct protocol will be saved in memory also.

NOTE: To press RESET button over 1 second that will clear protocol memory.

6.3 After interpreter learning was successful, the DV900 red light flashes mean the video and traffic information are recorded.

F. Led Indicator Instruction



1. Power On / Recording

Power on and wait for about a minute and then boot the machine completely. In the boot process, the green indicator will light on about one minute; the red indicator will flash, that is on recording.

I. LED light indicator:

- RED light will be flashing during recording.
- GREEN light will be on when connect the power well.

II. Power Off / Stop Recording

- When the power is off, the machine will stop recording. You can remove the SDHC card and put it to the card reader to connect to the PC for playing the recorded files.

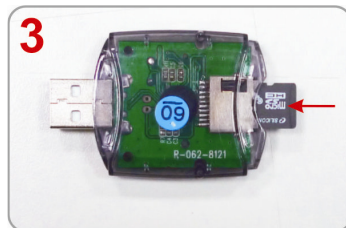
How to read the files from micro SD card?



Force reduction SD card, SD card pop up lightly.



Remove the card from the machine.







Insert the SDHC card into the card reader (please make sure the direction is correct).



Connect the card reader to the PC


5. Read the memory card folder; or the entire memory card data backup on the PC side of the path C:\ BlackBox folder directory.
6. Choose to play the file: the implementation of the product CD folder ATBS

CarBox2.exe  Screen as shown below, press  Play button, Select the memory card; or select 『Open Document』  Select the memory card or the files stored on the hard disk to play; during file playback, if we want to pause the playback, we could directly tap the pause button to pause playback .

★Note: It is recommended to copy the product CD IBoxPlayer folder to the computer and conduct the entire operation of software.

G. Software operation instruction

1. Viewer interface



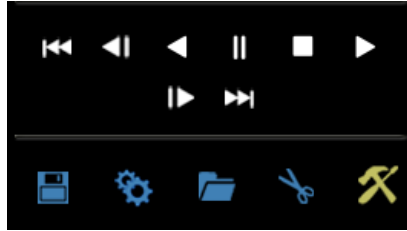
Play Speed
Volume

OBD2

- Format
- Snapshot
- Playback selection
- Configuration
- Backup: Transfer video file to AVI format and traffic information to Excel format

★ Caution : It needs to install DirectX 9.0 or above before running this software.

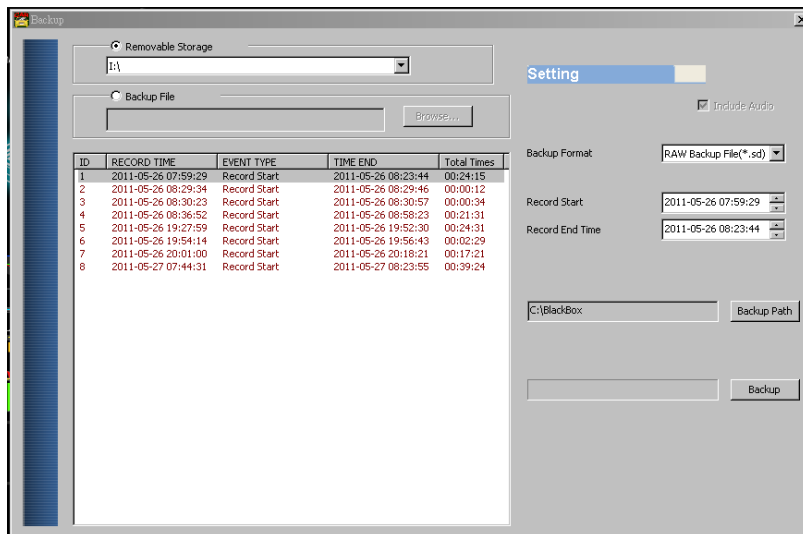
2. Play & Settings Icon Instruction:



1		play previous file
2		play previous frame
3		play backward
4		Pause
5		Stop
6		Play
7		Play next frame
8		Play next file
9		Disk back up, transfer video and traffic information
10		setting
11		Open file
12		Snapshot
13		tools , format memory card

Disk backup

Save the recorded files to your PC. Click on the button and it will pop up the screen as below



Step1:

Select the origin from the SD card

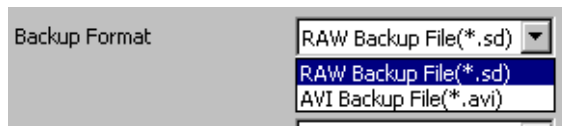


Step2: Select the recorded file which you want to backup

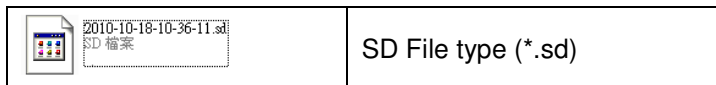
ID	RECORD TIME	EVENT TYPE	TIME END	Total Times
1	2011-05-26 07:59:29	Record Start	2011-05-26 08:23:44	00:24:15
2	2011-05-26 08:29:34	Record Start	2011-05-26 08:29:46	00:00:12
3	2011-05-26 08:30:23	Record Start	2011-05-26 08:30:57	00:00:34
4	2011-05-26 08:36:52	Record Start	2011-05-26 08:58:23	00:21:31
5	2011-05-26 19:27:59	Record Start	2011-05-26 19:52:30	00:24:31
6	2011-05-26 19:54:14	Record Start	2011-05-26 19:56:43	00:02:29
7	2011-05-26 20:01:00	Record Start	2011-05-26 20:18:21	00:17:21
8	2011-05-27 07:44:31	Record Start	2011-05-27 08:23:55	00:39:24

Step3: Choose the backup file format

Offer SD Card Backup (*.sd) , AVI File Backup (*.avi)



(1) SD card backup format



(2)AVI File Backup(*.avi) (*.srt)

When using AVI format, it will produce an AVI file, a file for subtitle display (*.srt) ,and traffic information Excel file. Subtitle will include the date, time, speed, rpm, Engine load, Engine temperature, throttle, battery voltage, DTC(ON/OFF), cruise, clutch, brake, MAF, distance, Average Fuel Economy , and Emergency Braking. These data but must use the software player which supports subtitle display to show it correctly.

	2011-06-03-16-52-06-CHN01	107,019 KB	KMP - Windows Movie File
	2011-06-03-16-52-06-CHN01	172 KB	Microsoft Office Excel :
	2011-06-03-16-52-06-CHN01	72 KB	KMP - SRT Subtitle File

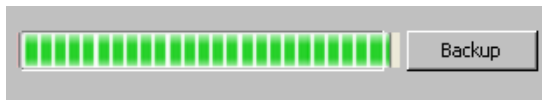
★Note 1 : The subtitle file must have the same file name as the image file to display the subtitle correctly.

★Note 2 : The difference between SD file and AVI file is that AVI file contains only date and speed information but lose the GPS coordinates and G-sensor data. As a result, we would recommend to do the backup by original SD format.

Step4: Backup Path: Select your backup destination (e.g.: C:\blackbox)

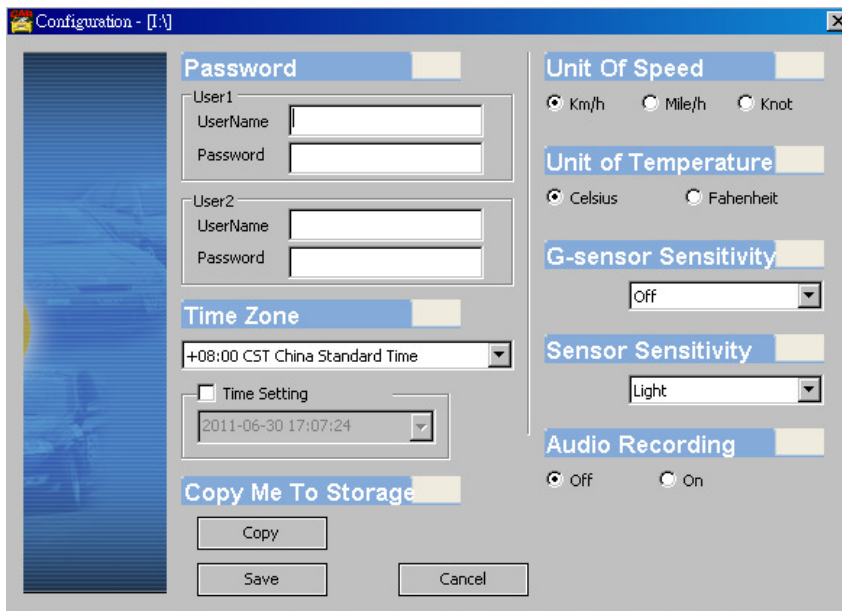


Step5: Backup : Start backup the file to your specified destination



Setting

Before using the machine, please insert the micro SDHC card to the card reader and connect to the PC to set up the machine. When finished, you can insert the card back to the machine and start recording



1. password
This function can encrypt the data and prevent others from accessing.
Maximum letters are up to 15 digits.
Example: 123456789012345

After setting the password up, you have to input password every time for playing the files, modify the setting, formatting the SDHC card, etc.

★ Note: Please check if you have set capital letters for your password and save your password well in other place to prevent from missing.

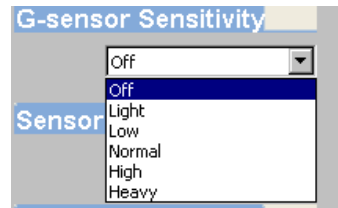
2. Time zone

Local system time zone : GMT , or adjust your time zone for your area.

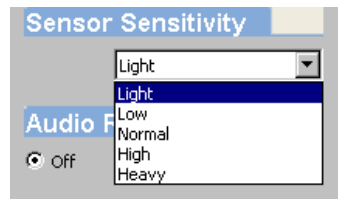
Time setting : Use computer system for setting the time.

3. Unit of speed : Select vehicle speed unit.
4. Unit of Temperature: Select engine temperature unit.
5. G-Sensor sensitivity:

Off: turn off G-sensor
light: G-sensor active when G force is light;
Heavy : G-sensor active when G force is large.




6. Sensor sensitivity:
It is camera sensor sensitivity, This function is used to adjust the light compensation, heavy: up compensation, , default is normal.

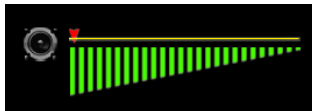


7. Audio Recording: Turn ON/OFF

Snapshot

While playing the recorded file, you can use this function  to snapshot the picture and save it into your PC. Default saving path for snapshot picture will be in x:\IBoxPlayer/Snapshot folder. File type: BMP

Volume control



Play BAR



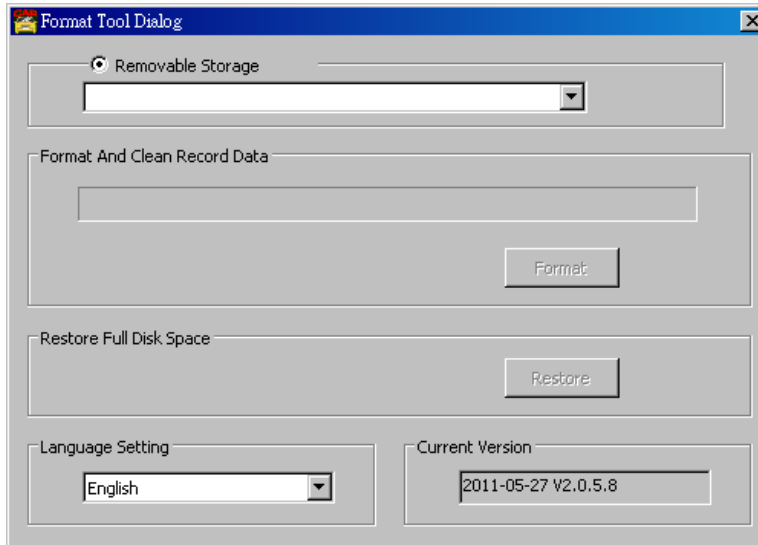
You can use the mouse to drag the bar to search the video quickly.

Play speed



Support 2x, 4x fast forwarding and -2x, -4x slow play mode.


H. Formatting Memory Card



1. When You Should Format SDHC CARD?

When you use the SDHC card for the first time or just purchase a new card, you should format it in order to use it correctly. (The bundled SDHC card has been formatted and tested by the manufacturer already.)

Click on 『Format』 to start formatting the SD card.

Notice	
	<p>Before formatting SD memory card, please ensure to unlock it first.</p>

When formatting is completed, please insert the card into the machine for recording.

		
<p>1</p> <p>Insert the SDHC card in correct direction.</p>	<p>2</p> <p>Press the SDHC card in until it is set.</p>	<p>3</p> <p>Finished</p>

2. Restoring Memory Card

When you have backup the recorded files into PC and want to use the SDHC card for other purposes, you have to restore it first so it can be used correctly.

How to restore it?

Steps:

- 1.) Insert the CD in your PC and click on 『Format』 to start formatting the SD card.
- 2.) Click on 『Restore』 to restore the SD card. Please see the following steps as reference

After finished, the memory card can be used for other purposes.

3. Language setting: select operation language.

I. Caution :

1. Do not take off the Micro SD card under the recording or under power on status.
2. Please insert /Take out the Micro SD under the power off status.
3. When the Micro SD card is full it will auto running recover. The first file will be erased.
4. Do not operate interpreter when you are driving.

J. Troubleshooting :

1. Interpreter is not working.
A: If interpreter power LED is off, Check OBD connector whether is loose and plug out /in OBD connector once.
2. The interpreter never learns protocol success.
A: Press **RESET** button over 1 second to clear memory, as the interpreter support many car models, it may take a little time to learn correct protocol, learning timing is about 2 ~3 minutes. Please check OBD TX LED flash every second during leaning period.
3. If no recording
A: Check OBD2 cable Input and check the Micro SD is damaged or not.