



www.thinkoutside.com

Stowaway[®] Universal Bluetooth[®] Keyboard Owner's Manual For Pocket PC 2002 and Windows Mobile[™] 2003

Includes:

Asus MyPal A620	iPAQ 2215
Dell Axim x3	iPAQ 4150
iPAQ 1940	iPAQ 4155
iPAQ 1945	iPAQ 4350
iPAQ 2210	iPAQ 4355

Pocket PC 2002 or Windows Mobile 2003 with Socket SD or CF cards.

Keyboard Driver:

Stowaway 4.0

Table of Contents

Installing and Configuring the Keyboard	3
Before You Begin	3
Installing the Software	3
Configuring the Keyboard to Your Pocket PC Device	4
Enabling the Keyboard Driver	4
Secure Connection	5
Unsecured Connections	6
Other Features	8
Power Efficient Modes	10
Reconnecting the Stowaway BT keyboard	12
Unsecured Mode Settings	13
Customizing Your Keyboard	14
Input Method Toolbar	14
Keyboard Control Panel	15
Disabling the Stowaway BT Keyboard	16
Keyboard Status Light	16
Secure Connection Overview	17
Using the Stowaway BT keyboard	18
Moving the Cursor/Highlighting Text	18
On-Screen Button and Editing Shortcuts	19
Launching and Navigating Applications	19
Menu and Toolbar Navigation	20
Other Shortcuts	20
International and Extended Character Set	21
Frequently Asked Questions	23
Legal Notices	25
Trademarks	25
Obtaining Warranty Service	26
Important Battery Information	27
Important Notes About Bluetooth Devices	27
Regulatory Notices	28
Features and Specifications Summary	34

Installing and Configuring the Keyboard

Before You Begin

Before you install the Stowaway Universal Bluetooth keyboard and mouse software for Pocket PC 2002/Windows Mobile 2003:

- **Disable or remove any other keyboard or mouse applications that you have previously installed on your Pocket PC device.** (Refer to the User's Guide included with your Pocket PC device for instruction on how to do this.)
- Ensure there is at least 400 KB of memory on your Pocket PC device. To check the available memory, tap Start =>Settings=>System=>Memory.
- Insert the 2 AAA batteries (included) beneath the battery cover of the Stowaway Universal Bluetooth keyboard.

Installing the Software

1. Connect your Pocket PC device to a computer using the docking cradle or sync cable.
2. Establish a connection between the computer and your Pocket PC device using ActiveSync® and then backup the data stored on the Pocket PC device. (Refer to the User Guide included with your Pocket PC device for instructions on how to do this.)
3. Insert the CD-ROM into the CD-ROM drive on your PC.
4. Double-click the language preferred to start the installation process. Follow the on-screen instructions to successfully install the software.
5. Tap the on-screen button to reset your Pocket PC device to complete the installation.
6. After the driver is successfully installed and the Pocket PC device is reset, the keyboard driver and mouse icons will appear in the **Programs** window.



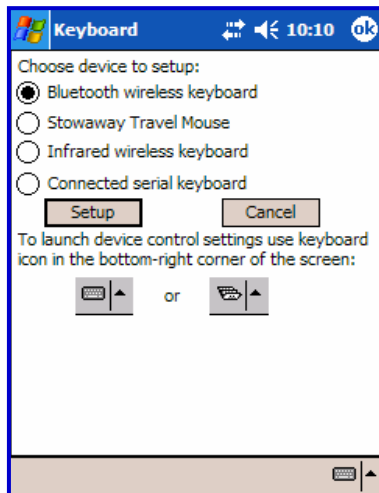
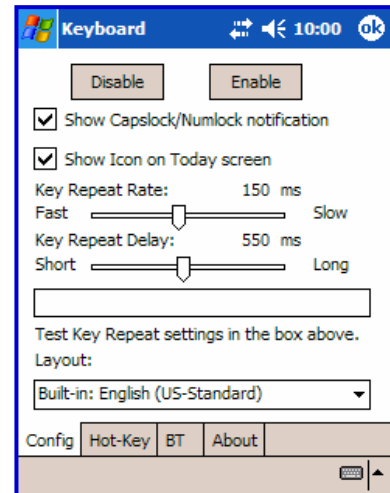
NOTE: The Bluetooth connection between the PDA and keyboard must be set up through the Stowaway keyboard/mouse driver.

Configuring the Keyboard to Your Pocket PC Device

ENABLING THE KEYBOARD DRIVER

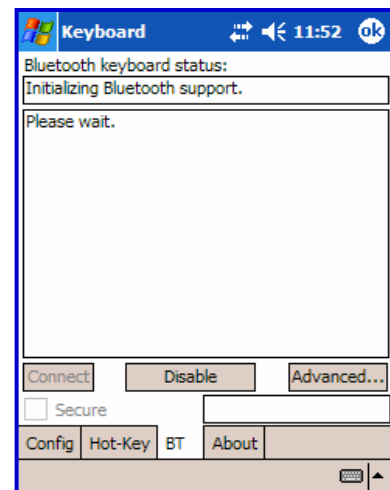
1. To enable the Stowaway BT keyboard, tap the **Enable** button on the **Config** screen of the keyboard application. This will open the **Keyboard Setup Screen**.

NOTE: After the first installation of the driver the **Device Setup Screen** is opened automatically and this screen is skipped.



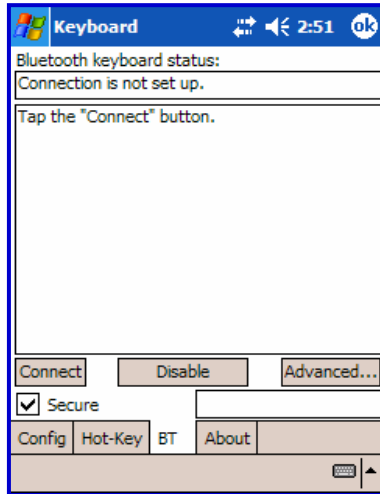
2. When the **Device Setup Screen** is shown, select the **Bluetooth wireless keyboard** option and tap **Setup**. This will show the **Bluetooth keyboard status page** of the Stowaway BT keyboard application. You may also open that page by selecting the **BT** tab.

3. When the set up begins, the driver will enable the Pocket PC Bluetooth system software; this is also known as the **Bluetooth Stack**.



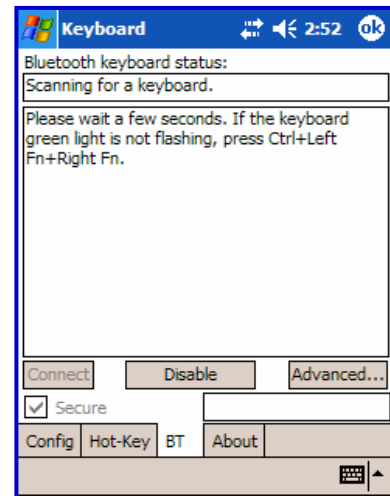
Initially you must decide which type of connection is preferred; **Secured** or **Unsecured**. Each has its own pros and cons; please take a moment to familiarize yourself with the various options and pick the one best suited to your needs.

SECURED CONNECTIONS



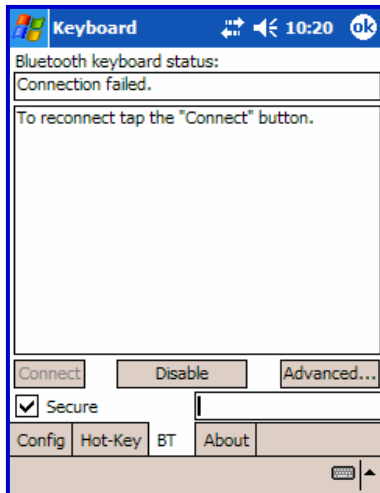
1. A **Secure connection** requires authentication by entering the same **passkey** on the Pocket PC device and then on the keyboard. A Secure connection allows automatic reconnection. Before starting the connection make sure the keyboard is **Discoverable** by the Pocket PC device. To do this, press the <Ctrl> <Left Fn> <Right Fn> keys together on the keyboard until the green LED (above the <T> key) flashes once per second. Then tap the **Connect** button on the screen.

2. The Pocket PC will scan for the Stowaway Universal Bluetooth keyboard. Once it is discovered a prompt will display, allowing you to enter the **passkey**.



3. The Pocket PC Bluetooth system software will prompt you for a passkey. You are likely to see the **Bluetooth Passkey** dialog shown here, but this is variable by device. Enter a passkey **of your own choosing** using the Pocket PC on-screen keyboard and tap OK in the top right corner of the window. Then, type the same passkey number on the Stowaway BT keyboard, using <Left Fn> + <Number> keys. When finished, press the <Enter> key. **NOTE:** The passkey must contain only digits, for example **1234**.

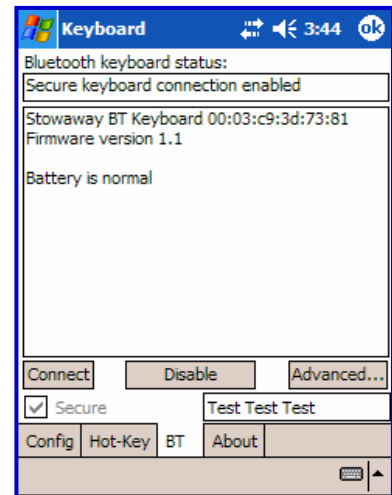




- If the passkey is not entered correctly, the connection will fail. In this case you will need to press the <Ctrl> <Left Fn> <Right Fn> keys together on the keyboard and tap **Connect** again.

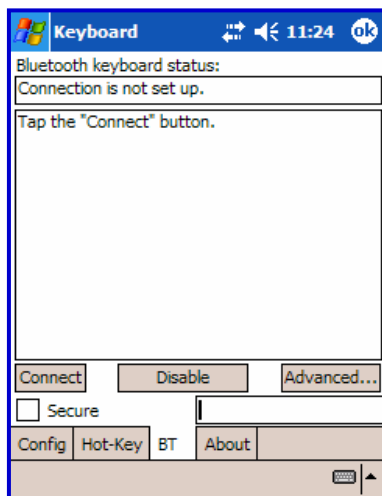
NOTE: Please, make sure that the passkey is entered on-screen first, tap OK and then follow with the passkey on the keyboard. When finished, press the <Enter> key on the keyboard.

- The keyboard is now **paired** with the Pocket PC and is available for use. If the keyboard is closed, or the Pocket PC is turned off or either is idle too long the connection will be broken. To reconnect make sure both devices are powered on and within range, then press a key to reestablish the connection. If reconnection fails tap the **Connect** button on the BT status page.
- NOTE:** It may take a couple of seconds for the connection to be reestablished after a key press.



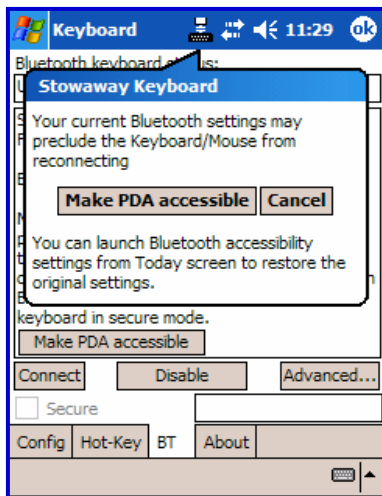
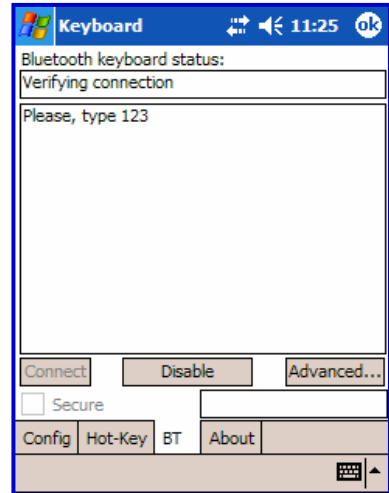
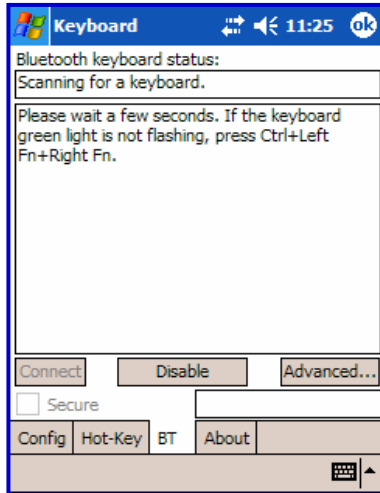
UNSECURED CONNECTIONS

The following sequence depends on the settings in your Bluetooth Manager. For more information see [Unsecured Mode Settings](#).



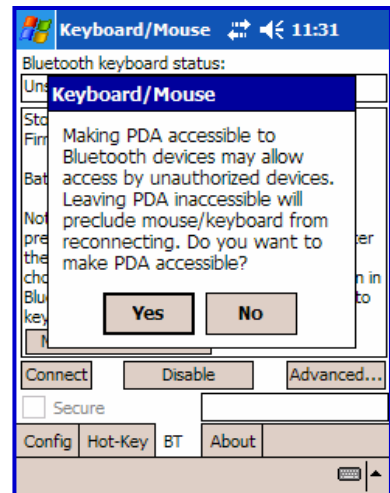
- Make the keyboard discoverable by pressing <Ctrl> <Left Fn> <Right Fn> keys together on the keyboard until the green LED (above the "T" key) flashes once per second. Make sure the **Secure** box is not checked and tap the **Connect** button on the screen.

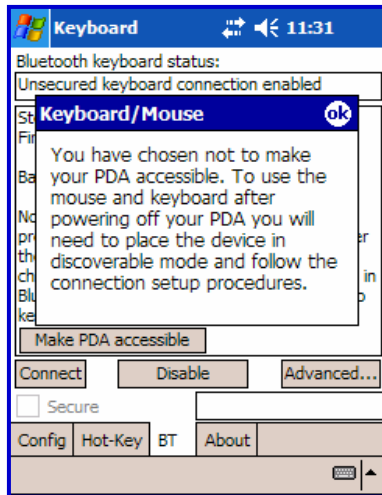
- The Pocket PC will scan for the Stowaway Universal Bluetooth keyboard. After the connection is made you will be prompted to verify the connection by typing 123 (QWE) on the keyboard.



- Depending on the Pocket PC's **Bluetooth Accessibility Settings**, you may see this screen next. Tapping **Make PDA accessible** will set the Bluetooth Accessibility Settings to allow connections from **All devices** and will allow automatic reconnection of the Pocket PC and keyboard when both are powered on and in range. **NOTE:** This is a vulnerable configuration; please see [Unsecured Mode Settings](#) for more information.

- If you choose **Make PDA accessible** you will be prompted with this warning screen, tap **Yes** to finish making the connection.

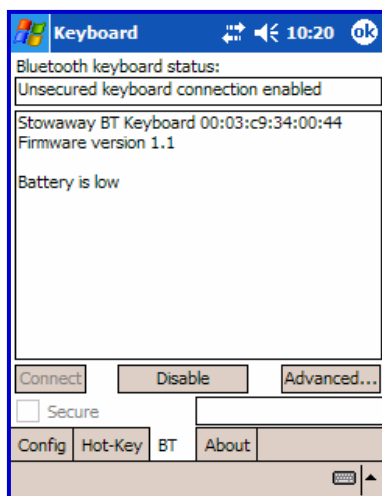
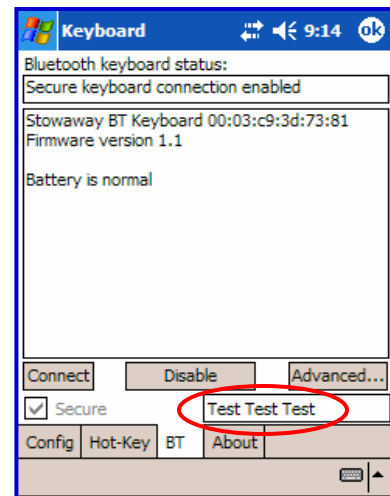




5. If you choose not to ***Make PDA accessible*** by tapping ***Cancel*** or ***No*** you will be warned that future connections between the Pocket PC device and keyboard will need to be set up manually before each use.

OTHER FEATURES

1. The ***Bluetooth Status Page*** displays the current state of the Bluetooth connection between your Pocket PC device and the Stowaway BT keyboard. You can enable and disable the connection, and enter text to test the connection. Keyboard battery strength and firmware versions are also displayed here. For more information on the ***Advanced*** tab see [Power Efficient Modes](#).



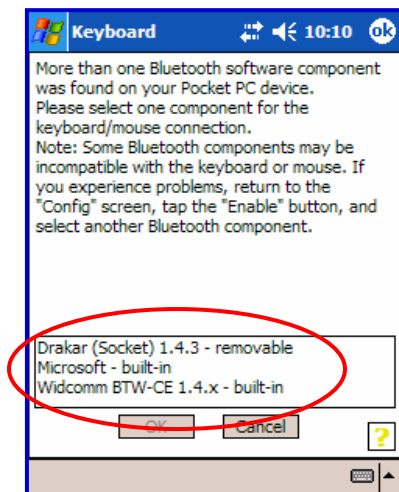
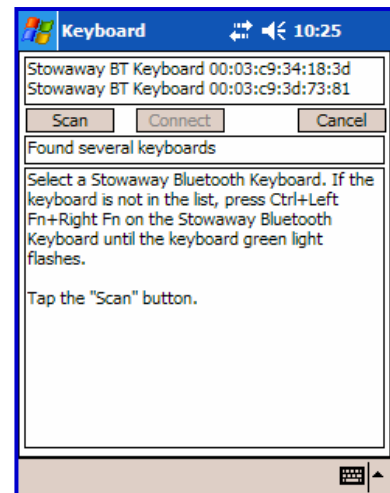
2. On the ***Bluetooth Status Page*** the keyboard battery information is displayed. The three states of the battery are:
 - a. ***Normal*** – This is the most common state of the battery.
 - b. ***Low*** – This is a warning that the batteries have reached a threshold where they should be replaced soon.
 - c. ***Critical*** – This means the batteries are in imminent danger of no longer functioning.



3. If the keyboard batteries reach a low or critical state a message will be displayed on the Today screen.

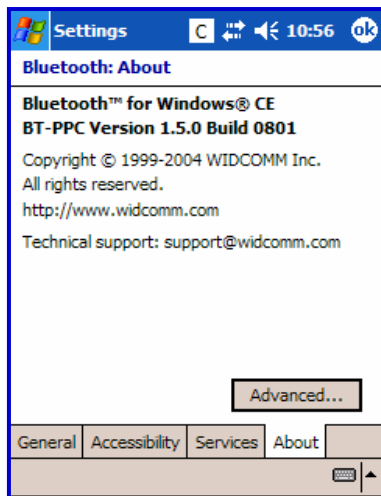
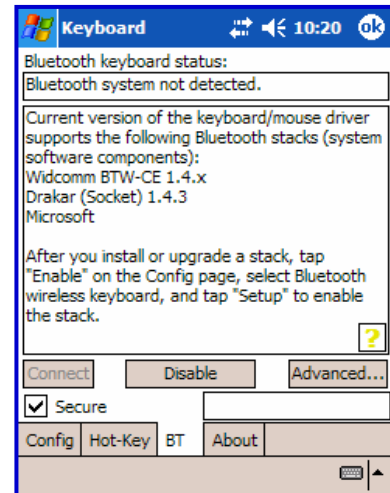
NOTE: The keyboard will display a **RED** LED above the <T> key to show when the batteries do not have enough power for the Bluetooth radio to function.

4. If several Stowaway BT keyboards happen to be nearby and in **Discoverable Mode**, the scan will display all of these devices in the list. The keyboard ID (Bluetooth address) printed on the back of the keyboard should be compared with the IDs in the list and the desired keyboard selected.



5. If more than one Bluetooth stack is found on the Pocket PC device, the keyboard application will display a **Stack Selection** dialog box. If the device has a built-in Bluetooth system, that stack should be used (e.g. Widcomm BTW-CE). If the device is using a removable Bluetooth card such as a SDIO card, a different stack may need to be used (e.g. Socket or Microsoft). If the wrong stack is selected, a connection may not be possible. In such a case, rerun the connection procedure and select the correct stack.

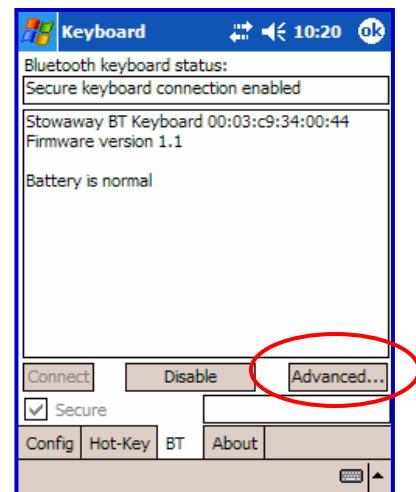
- If the keyboard driver fails to detect any supported Bluetooth stack during the initial set up or at a later time, it will display the **Bluetooth system not detected** message on the **BT** page. This should not happen on Pocket PC devices with a built-in Widcomm stack version $\geq 1.4.x$, since it is always present and is supported by the keyboard software. However, if the device has been upgraded with an incompatible version of the stack, then this message may be displayed or the software may function improperly. In this case the keyboard software must be replaced with a compatible version.

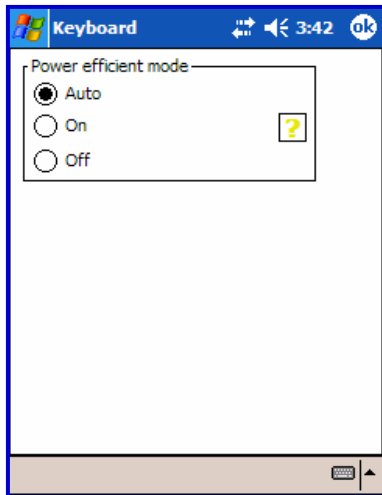


- To determine the version of the Bluetooth stack installed on your handheld device, locate the Bluetooth icon and tap it with the stylus to open the application. Find the Bluetooth **About** tab and tap to open the associated page. There you will find the version and build for the installed Bluetooth stack.

POWER EFFICIENT MODES

- The Advanced tab allows access to different power efficiency modes.





2. The Stowaway Universal Bluetooth keyboard is designed to operate in Power Efficient Mode in compliance with the Bluetooth specification. However, some Pocket PC devices have difficulty operating effectively with Power Efficient Mode set to **ON**. The default setting is **Auto**, this allows the keyboard driver to determine whether to use Power Efficient mode or not. If the driver detects a Pocket PC device which may work incorrectly in Power Efficient mode, it will turn it **OFF** automatically. You should turn **OFF** Power Efficient mode manually if you experience problems such as:

- Inability to **Scan** for other Bluetooth devices.
- Inability to **Connect** to other Bluetooth devices.
- Inability to **Discover** the Pocket PC device and connect to it from another Bluetooth host.

NOTE: Turning off Power Efficient mode will shorten the battery life in your Bluetooth devices.

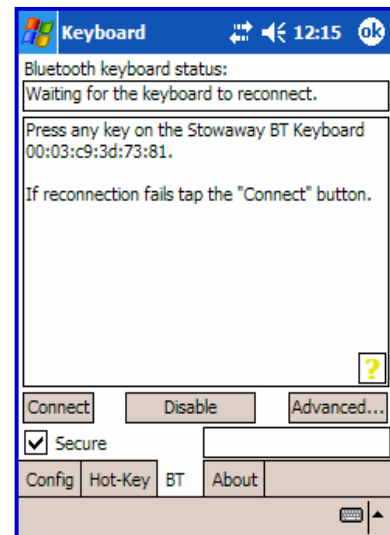
Power Efficient mode may be turned **ON** manually to extend battery life if the Pocket PC device fully supports it or only one Bluetooth peripheral is used at a time.

Reconnecting the Stowaway BT keyboard

For information on *Unsecured* connections and re-connections see [Unsecured Mode Settings](#).

Despite a high degree of reliability, the Bluetooth connection could break for many reasons:

- When the keyboard cover is closed, the keyboard circuit will be powered off, and the Bluetooth connection will be lost.
- As a power saving feature, the keyboard will be automatically powered down after an *idle period* (when there is no activity for approximately 3 minutes).
- When the Pocket PC device is turned off, the established Bluetooth connection will be lost.
- When the Pocket PC device and the keyboard are moved away from each other beyond the wireless range (~10m), the previously established connection is lost.



When any of these conditions occurs, the connection will be lost and the software will switch to waiting mode. To restore the connection, make sure the keyboard and Pocket PC device are powered on and in range, then tap any key on the keyboard. The connection should be reestablished within 2-3 seconds but this may be delayed if the Bluetooth system on the Pocket PC device is busy. For example, after the Pocket PC device is powered on, it may take 10 or more seconds for the Bluetooth system to re-initialize.

NOTE: Do not press <Ctrl> <Left Fn> <Right Fn> together. This will break the bond between the keyboard and the Pocket PC device. If this happens, you will have to establish a new connection as described above.

Even when disconnected, the Pocket PC device and the keyboard remain bonded. The keyboard will only reconnect to the bonded Pocket PC device and the Pocket PC device will only listen to the bonded keyboard. To break the bond press <Ctrl> <Left Fn> <Right Fn> for approximately 1 second or until the green LED flashes quickly. Normally the bond will not need to be broken unless the keyboard will be used with another Pocket PC device or another keyboard will be used with the Pocket PC device. Therefore, please avoid pressing <Ctrl> <Left Fn> <Right Fn> during normal operation. If this has happened, you will have to establish a new connection as described in the [Secured Connections](#) section above.

Unsecured Mode Settings

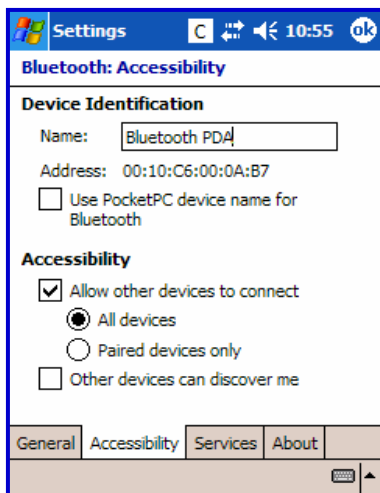
There are two basic settings that affect how the keyboard and Pocket PC device connect in **Unsecured** mode. **All Devices** and **Paired devices only**.

In order to automatically reconnect in **Unsecured** mode, the Pocket PC device's Bluetooth settings must be set to allow **All Devices** to connect. Each manufacturer's Bluetooth configuration screens differ, but generally you will find the **All devices** and **Paired devices only** options within the Bluetooth Settings under the Accessibility tab. This set of screens may be available directly via a Bluetooth icon on the Today screen, or by navigating to the Start Menu=> Settings=> Connections tab.

If your device is set to **Paired devices only** you will be prompted to **Make PDA accessible** during the initial set up of the keyboard. This will change the settings to **All devices**.


NOTE: Because they are not encrypted, **Unsecured** connections do not provide built-in signal encryption and are vulnerable to eavesdropping of the data transmitted between the keyboard and the Pocket PC device.

If you choose to create an Unsecure connection and **Cancel** at the **Make PDA accessible** screen the settings will remain in the **Paired devices only** state. This means that before each use of the keyboard it will need to be made discoverable (<Ctrl> <Left Fn> <Right Fn>) and the connection will need to be manually set up, see [Unsecured Connections](#) for instructions on how to do this.



Proper settings for
automatic reconnection
of keyboard in
Unsecured mode.

Customizing Your Keyboard

Once the keyboard software is installed on the Pocket PC device, you may customize the options. A keyboard icon  will appear in the lower right corner of the screen while using Calendar, Contacts, or other applications.

- Tap the keyboard icon once to display the Input Method Toolbar.
- Tap the keyboard icon on the Input Method Toolbar to display the Keyboard Control Panel.

NOTE: Tapping the keyboard icon once at the Today screen once will first display the Keyboard Control Panel. Tapping the same keyboard icon will display the Input Method Toolbar.

Input Method Toolbar

There are four icons that appear in the Input Method Toolbar. This assumes that the *Stowaway Keyboard* input method is selected. The leftmost icon shows the state of the Bluetooth connection; there are three different states that can be indicated. A tap and hold on this icon will display a text message describing the state.



- This shows that the Bluetooth connection is active.



- This shows that the driver is waiting for the keyboard to reconnect.



- This shows that the connection is not set up.

The other three icons relate to other features of the keyboard driver.



- Tap this speaker icon to turn the keyboard clicking sounds on or off.



- Tap this keyboard icon to access the Keyboard Control Panel. This second keyboard icon appears above the keyboard icon that is visible in the lower right corner of the screen.



- Tap this help icon to access keyboard help topics and troubleshooting tips.

Keyboard Control Panel

On the **Config** tab:

- Tap **Enable** (the next screen allows you to turn on access to the Stowaway Universal Bluetooth keyboard) to choose which keyboard to enable. Tap **Disable** to turn off access to all keyboards.
- To see a visual indication if the keyboard is in Caps Lock or Num Lock mode, check or uncheck the **Show Capslock/Numlock notification** option.
- To select whether or not the keyboard icon will appear in the lower right corner of the Today screen, check or uncheck the **Show Icon on Today screen** option.
- To **increase** key repeat speed, drag the **Key Repeat Rate** slider to the **left**.
- To **decrease** key repeat speed, drag the **Key Repeat Rate** slider to the **right**.
- To **increase** key repeat delay, drag the **Key Repeat Delay** slider to the **right**.
- To **decrease** key repeat delay, drag the **Key Repeat Delay** slider to the **left**.
- To verify the language layout installed, tap the down-arrow in the drop down box under **Layout**.

On the **Hot-Key** tab:

- Tap the down-arrow next to a number and select the application to associate with that number. When you press the <Alt> <LFn> <number> key combination (e.g. <Alt> <LFn> <4>), the selected application will launch. You may assign up to 10 applications in this manner. (There are 2 Fn keys on the Bluetooth keyboard. The **blue** <Fn> key is to the left of the spacebar and is referred to as <LFn>. The **green** <Fn> key is to the right of the spacebar and is referred to as <RFn>.)

On the **BT** tab:

- This is where all functions of the **Stowaway BT keyboard** can be accessed.

On the **About** tab:

- The About tab indicates the keyboard software version installed on your Pocket PC device.

Disabling the Stowaway BT Keyboard

When the Stowaway BT keyboard is no longer needed, the keyboard driver may be disabled by tapping the **Disable** button on the **BT** or **Config** page. The **Connection is not set up** message will then be displayed on the **BT** page.

NOTE: Disabling the Stowaway BT keyboard will not automatically turn off the Bluetooth radio. Conversely, turning the Bluetooth radio off while the Stowaway BT keyboard driver is still enabled will not work. Because of the behavior of the Bluetooth stack, the Bluetooth radio will automatically turn back on after a few seconds. To turn the radio off, the Stowaway BT keyboard must be disabled first.

To re-enable the connection, tap the **Connect** button on the **BT** page or tap **Enable** on the **Config** page. See [Configuring the Keyboard to Your Pocket PC Device](#) for complete instructions.

Keyboard Status Light

When the keyboard is open there is a light above the <T> key that indicates the status of the keyboard.

- When the keyboard status light flashes a fast green light (approx. once per second) it is in **Discovery mode**. This is the state that allows it to be detected by the Pocket PC device. To place the keyboard into **Discovery mode**, use the <Ctrl> <Left Fn> <Right Fn> key combination.
- When keyboard status light flashes a slow green light (approx. once every four seconds) it is connected to the Pocket PC device and is available for use.
- When the keyboard status light is solid red for 5 seconds after power on, the batteries must be replaced before the keyboard can resume normal operation.
- When the keyboard is not connected to the Pocket PC device the status light is dark. This happens when a connection or reconnection has not been established or the connection has been broken.

Secure Connection Overview

When a Secure connection is established, the paired devices share a permanent security bond. This bond is established when two devices create and exchange a **Link Key**, this process is also known as **pairing**. Link Keys are based on a unique **Bluetooth Device Address**, an internally generated random number and a user defined **Passkey**.

With a Bluetooth connection, transmissions may be intercepted. In order to limit this exposure, a Secure connection should be set up. This encrypts data sent from the keyboard to the Pocket PC device, creating a **virtual cable**. This means that there is a 1:1 relationship between the Pocket PC device and the keyboard and it will not respond to connection requests from other devices. The Pocket PC device on the other hand will retain the ability to create new pairings with other devices.

The Pocket PC device searches the Bluetooth radio band until it finds the keyboard. If the Secure box is checked it will prompt for a Passkey. Once completed, each time the Pocket PC device and keyboard are powered on within range of each other, the devices will be reconnected without additional user intervention.

Using the Stowaway BT keyboard

- Commands joined by a dash “-” mean that the key combination must be pressed in order and with all keys held down at the same time.
- Commands joined by a plus “+” mean that the key following the “+” must be pressed after the initial key combination is pressed and released.
- The keyboard provides 2 separate color-coded function keys (*blue* <Fn> and *green* <Fn>) that enable you to navigate the device or access numbers and symbols. In the tables below, the *blue* <Fn> key is to the left of the spacebar and is referred to as <LFn>. The *green* <Fn> key is to the right of the spacebar and is referred to as <RFn>.

Moving the Cursor/Highlighting Text

You can easily navigate, position the cursor, and select text for subsequent editing functions with these key combinations:

Action	Shortcut
The cursor moves left (back) one word	<Ctrl>-<←>
The cursor moves right (forward) one word	<Ctrl>-<→>
Select (highlight) next character to the left	<LFn>-<←>
Select (highlight) next character to the right	<LFn>-<→>
Select (highlight) previous line	<LFn>-<↑>
Select (highlight) next line	<LFn>-<↓>
Select (highlight) the next word to the left	<Ctrl>-<LFn>-<←>
Select (highlight) the next word to the right	<Ctrl>-<LFn>-<→>
Select (highlight) the previous paragraph	<Ctrl>-<LFn>-<↑>
Select (highlight) the next paragraph	<Ctrl>-<LFn>-<↓>
Beginning of the line	<RFn>-<←>
End of the line	<RFn>-<→>
Page up one page at a time	<RFn>-<↑>
Page down one page at a time	<RFn>-<↓>
The cursor moves to the beginning of the document	<Ctrl>-<RFn>-<←>
The cursor moves to the end of the document	<Ctrl>-<RFn>-<→>
The cursor moves to the top of the page	<Ctrl>-<RFn>-<↑>
The cursor moves to the bottom of the page	<Ctrl>-<RFn>-<↓>

On-Screen Button and Editing Shortcuts

From the keyboard, you can activate on-screen buttons such as (OK) or (X) and access application editing functions. Refer to the following table for the appropriate keyboard shortcut.

On-Screen Button or Editing Function	Shortcut
OK	<LFn>--<Enter>
Send (simulates a screen tap on Send)	<LFn>--<.,>
Close a window or application	<LFn>--<X>
Generate an ESC	<LFn>--<Tab>
Turns on NumLock mode	<LFn>--<CapsLock>
Turns on CapsLock mode	<CapsLock>
New item	<Ctrl>--<N> or <LFn>--<N>
Cut selected text	<Ctrl>--<X>
Copy selected text	<Ctrl>--<C>
Paste cut or copied text	<Ctrl>--<V>
Undo last action	<Ctrl>--<Z>
Select all	<Ctrl>--<A>

Launching and Navigating Applications

To launch software applications and navigate among them, refer to the following table:

Action	Shortcut
Access Programs screen	<LFn>--<C>
Access Settings screen	<LFn>--<V>
Launch Today screen	<LFn>--<Z>
Launch Calendar	<LFn>--<A>
Launch Contacts	<LFn>--<S>
Launch Inbox	<LFn>--<D>
Launch Tasks	<LFn>--<F>
Launch Notes	<LFn>--<J>
Launch Word	<LFn>--<K>
Launch Excel	<LFn>--<L>
Launch Internet Explorer	<LFn>--<.;>
Launch up to 10 user selected applications (refer to "Hot-Key tab" section for more information)	<Alt>--<LFn>--<number>
Toggle among open and recently used programs.	<Alt>--<Tab> (Hold the Alt key and hit the Tab key until the program you want is selected, then release keys to make it active)

Menu and Toolbar Navigation

You can access program menus, submenus, and toolbars with the Stowaway BT keyboard using the following commands.

Action	Key command
<p>To activate a program's menu bar at the bottom of the Pocket PC device screen and select a main menu item use one of these two (2) methods:</p> <ol style="list-style-type: none"> 1. Press and release the <Alt> key, then use the arrow keys to scroll left and right until the main menu item you want is highlighted. <p style="text-align: center;">or</p> <ol style="list-style-type: none"> 2. Press and hold the <Alt> key, then press the letter key that corresponds to the first letter of the main menu item (e.g. to access the Tools menu in Word, hold the <Alt> key then press <T>). 	<p><Alt>+<⇐> or <Alt>+<⇒></p> <p><Alt>–first letter of main menu item</p>
<p>To access a program's submenu, first select a main menu item and then navigate the submenu using the up and down arrow keys. Press the <Enter> key to choose the submenu item.</p>	<p><↑> or <↓></p> <p><Enter></p>
<p>To access a program's toolbar at the top of the Pocket PC device screen:</p> <ol style="list-style-type: none"> 1. Press and hold the <Ctrl> key and then press the <Tab> key. 2. Use the left and right arrow keys to highlight the Tool bar item you want. 3. Press <Enter> to select the highlighted tool bar item. 4. Use the up and down arrow keys to highlight the submenu item you want. 5. Press <Enter> to select the highlighted submenu item. 	<p><Ctrl>–<Tab></p> <p><⇐> or <⇒></p> <p><Enter></p> <p><↑> or <↓></p> <p><Enter></p>

Other Shortcuts

Several shortcuts below provide you additional flexibility when using the Stowaway BT keyboard:

Action	Shortcut
Show/hide the Input Method Toolbar	<LFn>–<Left Spacebar>
Launch the Keyboard Control Panel	<LFn>–<Right Spacebar>
Turns off the Pocket PC device. NOTE: Pressing a keyboard key will not turn it back on.	<LFn>–<Backspace>

International and Extended Character Set

Character	Description	Shortcut
Á, É, Í, Ó, Ú, Ý	Acute accent	<Ctrl>-<'>+<Shift>-<letter>
á, é, í, ó, ú, ý	Acute accent	<Ctrl>-<'>+<letter>
Â, Ê, Î, Ô, Û	Circumflex accent	<Ctrl>-<RFn>-<Y>+<Shift>-<letter>
â, ê, î, ô, û	Circumflex accent	<Ctrl>-<RFn>-<Y>+<letter>
Ä, Ë, Ì, Ö, Ù, Ý	Dieresis accent (umlaut)	<Ctrl>-<Shift>-<;>+<Shift>-<letter>
ä, ë, ì, ö, ù, ý	Dieresis accent (umlaut)	<Ctrl>-<Shift>-<;>+<letter>
À, È, Ì, Ò, Ù	Grave accent	<Ctrl>-<LFn>-<'>+<Shift>-<letter>
à, è, ì, ò, ù	Grave accent	<Ctrl>-<LFn>-<'>+<letter>
Ã, Õ, Ñ	Tilde accent	<Ctrl>-<RFn>-<'>+<Shift>-<letter>
ã, õ, ñ	Tilde accent	<Ctrl>-<RFn>-<'>+<letter>
Å	Dot accent	<Ctrl>-<RFn>-<W>+<Shift>-<A>
å	Dot accent	<Ctrl>-<RFn>-<W>+<A>
Ç	Cedilla	<Ctrl>-<, >+<Shift>-<C>
ç	Cedilla	<Ctrl>-<, >+<C>
Ø	Capital naught	<Ctrl>-</>+<Shift>-<O>
ø	Lower case naught	<Ctrl>-</>+<O>
Æ	Æ	<Ctrl>-<RFn>-<U>+<Shift>-<A>
æ	æ	<Ctrl>-<RFn>-<U>+<A>
Œ	Œ	<Ctrl>-<RFn>-<U>+<Shift>-<O>
œ	œ	<Ctrl>-<RFn>-<U>+<O>
ß	Beta	<Ctrl>-<RFn>-<U>+<S>
?	Question Mark	<Shift>-<↑>
¿	Inverted Question Mark	<Ctrl>-<Alt>-<Shift>-<↑>
!	Exclamation	<RFn>-<Q>
¡	Inverted Exclamation	<Ctrl>-<Alt>-<RFn>-<Q>
•	Bullet	<Ctrl>-<Alt>-<W>
°	Degree	<Ctrl>-<Alt>-<D>
μ	Micro	<Ctrl>-<Alt>-<U>
¶	Paragraph symbol	<Ctrl>-<Alt>-<LFn>-</>
§	Section	<Ctrl>-<Alt>-<S>
@	At sign	<RFn>-<W>
©	Copyright	<Ctrl>-<Alt>-<C>
™	Trademark	<Ctrl>-<Alt>-<T>
®	Registered trademark	<Ctrl>-<Alt>-<R>
£	Pound (British)	<Ctrl>-<Alt>-<P> or <RFn>-<;>
¥	Yen	<Ctrl>-<Alt>-<Y> or <RFn>-<. >
₣	Franc	<Ctrl>-<Alt>-<F>
₵	Lira	<Ctrl>-<Alt>-<L>
€	Euro	<Ctrl>-<Alt>-<E> or <RFn>-<, >
¢	Cents	<Ctrl>-</>+<C>
\$	Dollar sign	<RFn>-<R>


Character	Description	Shortcut
½	One-half	<Ctrl>--<Alt>--<LFn>--<W>
¾	Three-quarter	<Ctrl>--<Alt>--<LFn>--<E>
¼	One-quarter	<Ctrl>--<Alt>--<LFn>--<R>
±	Plus-Minus	<Ctrl>--<Alt>--<Shift>--<=>
÷	Division	<Ctrl>--<Alt>--<->
#	Number sign	<RFn>--<E>
%	Percent	<RFn>--<T>
^	Caret	<RFn>--<Y>
&	Ampersand	<RFn>--<U>
*	Asterisk	<RFn>--<I>
(Left parenthesis	<RFn>--<O>
)	Right parenthesis	<RFn>--<P>
{	Left curly bracket	<RFn>--<->
}	Right curly bracket	<RFn>--<=>
~	Tilde	<RFn>--<'>
	Vertical bar	<RFn>--</>
\	Reverse solidus	<LFn>--</>
`	Grave	<LFn>--<'>
[Left square bracket	<LFn>--<->
]	Right square bracket	<LFn>--<=>

Frequently Asked Questions

Q: My keyboard and handheld are in-range and powered on, why won't they reconnect after a key press?

If the initial connection is set up in *Unsecured mode* and the Bluetooth Accessibility is set to *Paired devices only*, the keyboard will not automatically reconnect. One of these parameters will need to be changed. Either reestablish the connection in *Secured mode*, see [Configuring the Keyboard to Your Pocket PC Device](#), or change the default settings within the Bluetooth Settings under the Accessibility tab, see [Unsecured Mode Settings](#).

Q: What should I do when I type on the keyboard and nothing happens?

- Check that Pocket PC device's batteries are charged.
- Verify that keyboard has sufficient power to operate.
- Check to make sure that the keyboard software is installed properly according to the instructions.
- Check the **BT** tab of the **Keyboard Control Panel** to make sure the **Stowaway BT keyboard** is enabled.
- Check the **Config** tab of the **Keyboard Control Panel** to make sure you've selected the appropriate keyboard type. After tapping **Enable**, you should select **Bluetooth wireless keyboard**.
- Use the Keyboard Help icon to launch the help. 

Q: I tried to turn off the Bluetooth radio and it automatically turned back on, what should I do?

The Stowaway BT keyboard must be disabled before the Bluetooth radio can be turned off. See the [Disabling the Stowaway BT Keyboard](#) section for more information.

Q: What are the Serial and IR tabs of the Keyboard Control Panel for?

If you should ever select and set up the **Connected serial keyboard** or **Infrared wireless keyboard** option on the **Config** tab of the **Keyboard Control Panel**, you will see a **Serial** and/or **IR** tab added to the **Keyboard Control Panel** as well as **Serial** and/or **IR** icons added to the **Input Method Toolbar**. Even if you change back to **Bluetooth wireless keyboard** the **Serial** and/or **IR** tab will remain in the **Keyboard Control Panel**. Serial keyboards use a physical connection versus a wireless connection to a Pocket PC device. Only users of Stowaway keyboards that

use a physical connection will use the **Serial** tab. Infrared keyboards use an infrared line of sight connection to a Pocket PC device. Only users of **Stowaway Infrared Wireless** keyboards will use the **IR** Tab. Users of the **Stowaway BT keyboard** can ignore these tabs.

Q: I received an error message saying the keyboard driver cannot find a supported Bluetooth component, what should I do?

The current version of the keyboard driver supports Widcomm Bluetooth for Windows CE (BTW-CE) version $\geq 1.4.x$, Drakar (Socket) and Microsoft Bluetooth stacks. If you have a different version, you may need to check for upgrades for either the Bluetooth stack or for the keyboard driver. (To determine the version of the Bluetooth stack installed on your Pocket PC device, locate the Bluetooth icon and tap it with the stylus to open the application. Find the Bluetooth About tab and tap to open the associated page. There you will find the version and build for the installed Bluetooth stack.)

Should the keyboard driver find more than one Bluetooth component on your Pocket PC device (for example if you have Bluetooth built-in and a removable Bluetooth card), then a dialog box will be displayed with a choice of available components. You will need to choose the Bluetooth component that you wish to be used with the Bluetooth keyboard and tap OK.

NOTE: Some Bluetooth components may not work with the keyboard. If you are not able to connect to the keyboard, you may have to return to the **Config** page, tap **Enable** again, select **Bluetooth wireless keyboard**, tap Set up, and then select another Bluetooth component.

Q: My keyboard was connected and character input to Pocket PC device worked fine, but after a certain *idle period*, it seems that the connection was lost.

Refer to the [Reconnecting the Stowaway BT keyboard](#) and [Unsecured Mode Settings](#) sections.

Q: How do I uninstall the keyboard driver?

Select Start=>Settings=>System tab=>Remove Programs. Select **Stowaway Keyboard and Mouse Driver** from the list of applications then tap the **Remove** button.

Legal Notices

Think Outside shall not be liable for technical or editorial errors or omissions contained herein or for special, indirect, incidental or consequential damages whatsoever in connection with the furnishing, performance, or use of this material. The information in this document is provided "as is" without express or implied warranty of any kind, including, but not limited to, the implied warranties of merchantability and fitness for a particular purpose, and is subject to change without notice. The warranties for Think Outside products are set forth in the express limited warranty statements accompanying such products. Nothing herein should be construed as constituting an additional warranty. Think Outside assumes no responsibility for any loss or claims by third parties, which may arise through the use of this software. Think Outside does not warrant that the software will be error-free, nor that the software will run uninterrupted. Think Outside assumes no responsibility for any damage or loss caused by deletion of data as a result of malfunction, dead battery, or repairs. Be sure to make backup copies of all important data on other media to protect against data loss. Information in this document is subject to change without notice.
©2004 Think Outside, Inc. All rights reserved.

Reproduction of this document in any manner whatsoever without the written permission of Think Outside, Inc. is strictly forbidden.

Trademarks

Dell and Axim are trademarks of Dell Inc. WIDCOMM and the WIDCOMM logo are trademarks of WIDCOMM, Inc. Bluetooth and the Bluetooth logos are trademarks owned by Bluetooth SIG, Inc., U.S.A. and licensed to WIDCOMM, Inc. ActiveSync, Windows Mobile, Windows and Outlook are registered trademarks of Microsoft Corporation. Think Outside and Stowaway are registered trademarks of Think Outside Corporation. iPAQ is a registered trademark of Hewlett Packard Corporation in the United States and/or other countries. Other trademarks and trade names may be used in this document to refer to either the entities claiming the marks and names or their products. No proprietary interest in other trademarks and trade names is claimed.

LICENSED SOFTWARE

© Copyright 2000 – 2004, WIDCOMM, Inc. ("WIDCOMM"). All rights reserved.

Warning: This software and accompanying documentation are protected by copyright law and international treaties. Unauthorized reproduction or distribution of this software, or any portion of it, may result in severe civil

and criminal penalties, and will be prosecuted to the maximum extent possible under the law.

Use of this software is governed by the terms of the end user license agreement that accompanies or is included with such software. Unless otherwise noted in the end user license agreement, or herein, no part of the documentation accompanying this software, whether provided in printed or electronic form may be reproduced in any form, or stored in a database or retrieval system, or transmitted in any form or by any means, or used to make any derivative work (such as translation, transformation, or adaptation) without the express, prior written consent of WIDCOMM.

Obtaining Warranty Service

Customer must contact Think Outside within the applicable warranty period to obtain warranty service authorization. Dated proof of original purchase will be required for warranty service, repair, or replacement. Products or parts shipped by Customer to Think Outside must be sent postage-paid and packaged appropriately for safe shipment. Think Outside is not responsible for Customer products received without a warranty service authorization and may be rejected. Repaired or replacement products will be shipped to Customer at Think Outside's expense. All products or parts that are replaced become the property of Think Outside. The repair and replacement process for products or parts in locations outside of the United States will vary depending on Customer's location.

Support@ThinkOutside.com

Think Outside
85 Saratoga Ave.
Suite 200
Santa Clara, CA 95051
USA
www.thinkoutside.com

Registering Your Product

To register your Stowaway keyboard product, please visit www.thinkoutside.com/register and complete the online form.

Important Battery Information

- Keep batteries away from children.
- Do not mix batteries of different types or old and new batteries.
- Always replace old, weak or worn-out batteries promptly and recycle or dispose of them properly. Before inserting new batteries, the battery compartment should be cleaned. If fluid from the battery comes into contact with skin or clothes, flush with water immediately.
- Remove the batteries if the device will be inactive longer than a month.
- Do not open, puncture or otherwise damage the batteries.
- Do not use fire to dispose of batteries.

Released battery electrolyte is corrosive and can cause damage to the eyes and skin and may be toxic if swallowed.

Comfortable Typing

Research suggests that physical discomfort and injury to nerves, tendons, and muscles may be related to repetitive motion, an improperly set up work area, incorrect body posture, and poor work habits.

To reduce the risk of injury, follow these precautions:

- Stand, stretch, and move around several times every hour.
- Every once in a while, work on a different task with your hands. Avoid repetitive motions. Use shortcut keys to move efficiently and avoid repetitive, awkward movement.
- Type gently and lightly.
- Relax your shoulders and keep your elbows at your sides. Adjust the keyboard so that you don't have to stretch to reach it.
- Adjust your position so that you don't have to bend your wrists to type; avoid placing your wrists on a sharp edge.

If you feel discomfort or numbness in your hands, wrists, arms, shoulders, neck or back while typing, get the advice of a qualified medical professional.

Important Notes About Bluetooth Devices

The Stowaway Universal Bluetooth keyboard can emit radio frequency (RF) energy whenever the green LED is flashing. Care should be taken when used around medical devices or equipment. For specific information, consult with the product manufacturer or your physician before use. To stop interference, close the keyboard or remove its batteries.

The Stowaway Universal Bluetooth keyboard should not be used on any aircraft. Before boarding an aircraft, close the keyboard to ensure there is no RF transmission.

Regulatory Notices

Electromagnetic Interference (EMI) is any signal or emission, radiated in free space or conducted along power or signal leads, that endangers the functioning of radio navigation or other safety service or seriously degrades, obstructs, or repeatedly interrupts a licensed radio communication service. Radio communications services include but are not limited to AM/FM commercial broadcast, television, cellular services, radar, air-traffic control, pager, and Personal Communication Services (PCS). These licensed services, along with unintentional radiators such as digital devices, including computers, contribute to the electromagnetic environment.

Electromagnetic Compatibility is the ability of items of electronic equipment to function properly together in the electronic environment. While this keyboard has been designed and determined to be compliant with regulatory agency limits for EMI, there is no guarantee that interference will not occur in a particular installation. If this equipment does cause interference with radio communications services, which can be determined by turning the equipment off and on, you are encouraged to try to correct the interference by one or more of the following measures:

- Reorient the receiving antenna.
- Relocate the keyboard with respect to the receiver.
- Move the keyboard away from the receiver.

If necessary, consult an experienced radio/television technician for additional suggestions.

FCC Notices (U.S. Only)

Most Stowaway keyboards are classified by the Federal Communications Commission (FCC) as Class B digital devices.

Class B

This equipment has been tested and found to comply with the limits for a Class B digital device pursuant to Part 15 of the FCC Rules. These limits are designed to provide reasonable protection against harmful interference in a residential installation. This equipment generates, uses, and can radiate radio frequency energy and, if not installed and used in accordance with the manufacturer's instruction manual, may cause interference with radio communications. However, there is no guarantee that interference will not occur in a particular installation. If this equipment does cause harmful interference to radio or television reception, which can be determined by

turning the equipment off and on, you are encouraged to try to correct the interference by one or more of the following measures:

- Reorient or relocate the receiving antenna.
- Increase the separation between the equipment and the receiver.
- Consult the dealer or an experienced radio/television technician for help.

FCC Identification Information

The following information is provided on the device or devices covered in this document in compliance with FCC regulations:

- Model number(s):

XTBT01

- Company name:

Think Outside, Inc.
85 Saratoga Ave. Suite 200
Santa Clara, California 95051 USA
(408) 551-4545


IC Notice (Canada Only)

Most Stowaway keyboards are classified by the Industry Canada (IC) Interference-Causing Equipment Standard #3 (ICES-003) as Class B digital devices. To determine which classification (Class A or B) applies to your keyboard, examine all registration labels located on your keyboard. A statement in the form of "IC Class A ICES-003" or "IC Class B ICES-003" will be located on one of these labels. Note that Industry Canada regulations provide that changes or modifications not expressly approved by Think Outside could void your authority to operate this equipment.

This Class B (or Class A, if so indicated on the registration label) digital apparatus meets the requirements of the Canadian Interference-Causing Equipment Regulations.

Cet appareil numérique de la Classe B (ou Classe A, si ainsi indiqué sur l'étiquette d'enregistrement) respecte toutes les exigences du Règlement sur le Matériel Brouilleur du Canada.

CE Notice (European Union)

Marking by  the symbol indicates compliance of this Stowaway keyboard to the Electromagnetic Compatibility Directive and the Low Voltage Directive of the European Union. Such marking is indicative that this Stowaway keyboard meets the following technical standards:

- EN 5502 – “Information Technology Equipment – Radio Disturbance Characteristics – Limits and Methods of Measurement.”
- EN 55024 – “Information Technology Equipment - Immunity Characteristics - Limits and Methods of Measurement.”
- EN 60950 – “Safety of Information Technology Equipment.”

NOTE: EN 55022 emissions requirements provide for two classifications:

- Class A is for typical commercial areas.
- Class B is for typical domestic areas.

This Think Outside device is classified for use in a typical Class B domestic environment.

EN 55022 Compliance (Czech Republic Only)

This device belongs to Class B devices as described in EN 55022, unless it is specifically stated that it is a Class A device on the specification label. The following applies to devices in Class A of EN 55022 (radius of protection up to 30 meters). The user of the device is obliged to take all steps necessary to remove sources of interference to telecommunication or other devices.

Pokud není na typovém štítku počítače uvedeno, že spadá do třídy A podle EN 55022, spadá automaticky do třídy B podle EN 55022. Pro zařízení zařazená do třídy A (ochranné pásmo 30m) podle EN 55022 platí následující. Dojde – li k rušení telekomunikačních nebo jiných zařízení, je uživatel povinen provést taková opatření, aby rušení odstranil.

Europe – CE Declaration of Conformity

EN 301 489-1 (December 2001), EN 301 489-17 (December 2001), EN 300 328-1 (August 2002), EN 300 328-2 (August 2002), EN 60950 (January 2000)



English	Hereby, Think Outside, Inc. declares that this XTBT01 is in compliance with the essential requirements and other relevant provisions of Directive 1999/5/EC.
French	<p>Par la présente Think Outside, Inc. Déclare que l'appareil XTBT01 est conforme aux exigences essentielles et aux autres dispositions pertinentes de la directive 1999/5/CE.</p> <p>Par la présente, Think Outside, Inc. Déclare que ce XTBT01 est conforme aux exigences essentielles et aux autres dispositions de la directive 1999/5/CE qui lui sont applicables.</p>
German	<p>Hiermit erklärt Think Outside, Inc., dass sich <i>dieser/diese/dieses</i> XTBT01 in Übereinstimmung mit den grundlegenden Anforderungen und den anderen relevanten Vorschriften der Richtlinie 1999/5/EG befindet. (BMWi)</p> <p>Hiermit erklärt Think Outside, Inc. die Übereinstimmung des Gerätes tastatur mit den grundlegenden Anforderungen und den anderen relevanten Festlegungen der Richtlinie 1999/5/EG. (Wien)</p>
Italian	Con la presente Think Outside, Inc. Dichiara che questo XTBT01 è conforme ai requisiti essenziali ed alle altre disposizioni pertinenti stabilite dalla direttiva 1999/5/CE.

Spanish	Por medio de la presente Think Outside, Inc. Declara que el XTBT01 cumple con los requisitos esenciales y cualesquiera otras disposiciones aplicables o exigibles de la Directiva 1999/5/CE.
Portuguese	Think Outside, Inc. Declara que este XTBT01 está conforme com os requisitos essenciais e outra disposições da Directiva 1999/5/EC.
Finnish	Think Outside, Inc. Vakuuttaa täten että XTBT01 tyyppinen laite on direktiivin 1999/5/EY oleellisten vaatimusten ja sitä koskevien direktiivin muiden ehtojen mukainen.
Dutch	Hierbij verklaart Think Outside, Inc. Dat het toestel XTBT01 in overeenstemming is met de essentiële eisen en de andere relevante bepalingen van richtlijn 1999/5/EG.
Swedish	Härmed intygar Think Outside, Inc. Att denna XTBT01 står i överensstämmelse med de väsentliga egenskapskrav och övriga relevanta bestämmelser som framgår av direktiv 1999/5/EG.
Danish	Undertegnede Think Outside, Inc. Erklærer herved, at følgende udstyr XTBT01 overholder de væsentlige krav og øvrige relevante krav i direktiv 1999/5/EF.
Greek	ΜΕ ΤΗΝ ΠΑΡΟΥΣΑ Think Outside, Inc. ΔΗΛΩΝΕΙ ΟΤΙ ΧΤΒΤ01 ΣΥΜΜΟΡΦΩΝΕΤΑΙ ΠΡΟΣ ΤΙΣ ΟΥΣΙΩΔΕΙΣ ΑΠΑΙΤΗΣΕΙΣ ΚΑΙ ΤΙΣ ΛΟΙΠΕΣ ΣΧΕΤΙΚΕΣ ΔΙΑΤΑΞΕΙΣ ΤΗΣ ΟΔΗΓΙΑΣ 1999/5/E

France

Some areas of France have a restricted frequency band. The worst case maximum authorized power indoors is:

10 mW for the entire 2.4 GHz band (2400 MHz–2483.5 MHz).

100 mW for frequencies between 2446.5 MHz and 2483.5 MHz (NOTE— Channels 10 through 13 inclusive operate in the band 2446.6 MHz to 2483.5 MHz).

There are few possibilities for outdoor use: On private property or on the private property of public persons, use is subject to a preliminary authorization procedure by the Ministry of Defence, with maximum authorized power of 100 mW in the 2446.5–2483.5 MHz band. Use outdoors on public property is not permitted.

In the departments listed below, for the entire 2.4 GHz band:

Maximum authorized power indoors is 100 mW.

Maximum authorized power outdoors is 10 mW.

Features and Specifications Summary

- Small, foldaway design makes it easy to put in your pocket or briefcase.
- Simple connection compatibility with your Pocket PC device via Bluetooth.
- Full size QWERTY keyboard layout for optimum comfort while typing. Meets ISO/IEC Specification 9995 for full-size keyboards.
- User-programmable shortcut keys for faster access to applications.
- On-screen menu and toolbar navigation via keyboard
- Does not draw power from your Pocket PC device.
- Rubber grip pads prevent keyboard from slipping while typing.
- Detachable device stand.

Dimensions Open:

Without stand 10.28"W x 0.59"H x 3.86"D (261mm x 15mm x 98mm)
With stand 10.28"W x 2.05"H x 6.97"D (261mm x 52mm x 177mm)

Dimensions Closed: 5.47"W x 0.79"H x 3.86"D (139mm x 20mm x 98mm)

Weight (including batteries): 6.42 ounces (182 grams)

Operating Temperature Range: 32° to 120°F (0° to 49°C)

Typical Battery Life: Continuous Operation: ~120 hours
 Typical usage: ~3 months
 Standby: ~10000 hours

RF Technical specifications

RF output power: Class 2. Maximum output power is 2.5mW (4 dBm).
Protocol: Bluetooth specification v. 1.1 compliant. Bluetooth HID Profile v. 1.0 compliant.

Frequency range: 2.4 – 2.4835GHz

Type of Modulation: GFSK (Gaussian Frequency Shift Keying).

Signal Type: FHSS (Frequency Hopping Spread Spectrum).