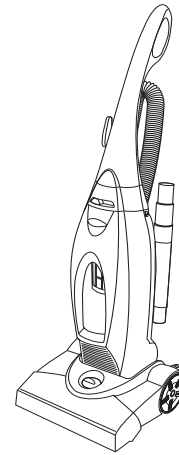


**morphy richards®**

## Cyclonic bagless upright vacuum cleaner



Please read and keep these instructions



### **Getting the best from your new cleaner...**

*If your cleaner is not picking up as well as it should, please check*

#### **Dust canister**

*It is important to regularly empty the canister, even if it does not appear full.*

#### **Filters**

*It is important that the pleated filter is shaken clean each time the dust canister is emptied, this allows air through the appliance. Wash the canister filters regularly in warm water and allow to air dry.*

#### **Blockages**

*Check the hose, tubes and tools for blockages.*

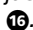
#### **Safety cut-out**

*If the air-flow is blocked or the filters are not regularly cleaned, a thermostat may operate. If this happens, switch off and disconnect from the mains supply. Clear any blockage, empty and clean the filters. Allow 60 minutes for the thermostat to reset.*

#### **Belt**

*Check and replace damaged or broken belt.*

#### **Height adjustment**

*The height adjustment only comes into effect when the handle is released by the handle release pedal .*

VC73332 MUK Rev 3



**If you have a problem or complaint, please call our dedicated UK based helpline before returning your product to the retailer from where it was purchased.**



UK Helpline: 0844 871 0949  
Replacement Parts: 0844 873 0715  
Ireland Helpline: 1800 409 119



For details of other Morphy Richards products, plus replacement parts and accessories, please see our website:

**[www.morphyrichards.com](http://www.morphyrichards.com)**

## **IMPORTANT SAFETY INSTRUCTIONS**

The use of any electrical appliance requires the following common sense safety rules.

Primarily there is danger of injury or death and secondly the danger of damage to the appliance. These are indicated in the text by the following two conventions:

**WARNING: Danger to the person!**

**IMPORTANT:** Damage to the appliance!

In addition we offer the following safety advice.

### **Location**

- Do not use or keep this product outside.
- Do not store the appliance near hot surfaces eg. ovens or heating appliances.

### **Mains lead**

- Do not allow the mains lead to become strained or run this appliance over it.
- If the electrical cable becomes damaged, the cable assembly must be replaced. Do not attempt this task yourself, contact the helpline number that is found at the bottom of the page.

### **Personal safety**

- **WARNING: Keep loose clothing, hair, fingers etc. away from the floor nozzle whenever the cleaner is connected to the mains.**
- **WARNING: Only lift the product by the handles ⑦ and ⑩.**

- **Disconnect from the mains supply before attempting to clear blockages, clear the brush or replace the belt.**

- Disconnect from the mains supply before cleaning or emptying the appliance.
- Never modify the cleaner in any way.
- Never use in the presence of explosive liquid or vapours.
- Never pick up inflammable or poisonous liquids such as petrol, copier toner or other volatile substances. Never pick up acids, asbestos or asbestos dust.
- Never touch the plug or cable with wet hands.
- Unprofessional repairs can be dangerous for users.
- Use only Morphy Richards spare parts and accessories.
- The appliance must never be left running unsupervised.
- This appliance is intended for domestic use only. Misuse or use for commercial or any other purpose will render the guarantee invalid.
- Always disconnect the appliance from the mains supply after use.
- This appliance is not intended for use by persons (including children) with reduced physical, sensory or mental capabilities, or lack of experience and knowledge, unless they have been given supervision or instruction concerning use of the appliance by a person responsible for their safety.
- To protect against fire, electric shock and personal injury, do not immerse cord, plug or cleaner in water or other liquid.

### **Product safety**

- Never use the appliance without the filters being installed.
- Never use the appliance to vacuum hot ashes, broken glass, sharp objects or liquids.
- Never over-extend the hose such that the cleaner is pulled over. If the cleaner is knocked over, switch off before attempting to upright.
- Never pick the cleaner up by the floor nozzle when connected to the mains, use the carrying handle.

### **Children**

- Children do not understand the dangers associated with operating electrical appliances. Never allow children to use this appliance.
- Children should be supervised to ensure that they do not play with the appliance, or stumble over the power cord.

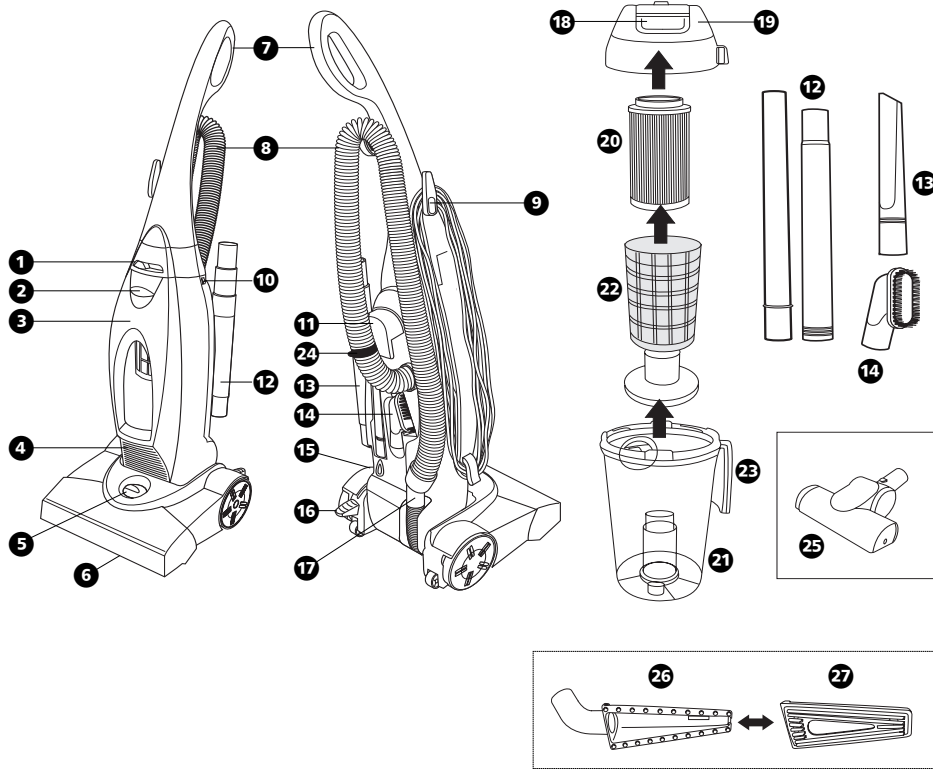
### **Electrical requirements**

Check that the voltage on the rating plate of your appliance corresponds with your house electricity supply which must be A.C. (Alternating current).

If the socket outlets in your home are not suitable for the plug supplied with this appliance, the plug should be removed and the appropriate one fitted.

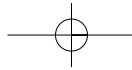
**WARNING: The plug removed from the mains lead, if severed, must be destroyed, as a plug with a bared flexible cord is hazardous if engaged into a live socket outlet.**

Should the fuse in the 13 amp plug require changing, a 13 amp BS1362 fuse must be fitted.



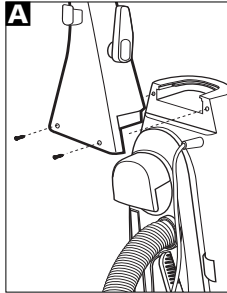
## FEATURES

- |  |  |  |
|--|--|--|
| <ul style="list-style-type: none"> <li>1 Eco Switch (certain models only)</li> <li>2 Front cover release</li> <li>3 Removable front cover</li> <li>4 Exhaust filter grille</li> <li>5 Carpet height adjustment knob</li> <li>6 Floor nozzle with powered brush</li> <li>7 Upper handle</li> <li>8 Flexible hose</li> </ul> | <ul style="list-style-type: none"> <li>9 Cord storage with quick release cleat</li> <li>10 On/Off switch</li> <li>11 Carrying handle</li> <li>12 Nested extension tubes (x2)</li> <li>13 Crevice nozzle</li> <li>14 Furniture brush</li> <li>15 Hose clip slot</li> <li>16 Handle release pedal</li> <li>17 Hose connector</li> <li>18 Dust canister release (shown page 5)</li> </ul> | <ul style="list-style-type: none"> <li>19 Dust canister lid</li> <li>20 Pleated circular filter</li> <li>21 Dust canister</li> <li>22 Central mesh filter</li> <li>23 Canister handle</li> <li>24 Hose clip</li> <li>25 Turbo nozzle (certain models only)</li> <li>26 &amp; 27 Stair and Hair tool (certain models only)</li> </ul> |
|--|--|--|



## OPERATING THE APPLIANCE

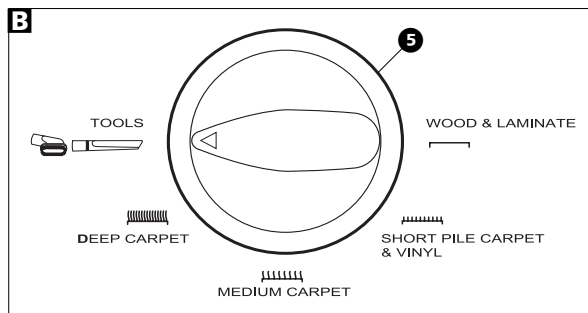
### Assembly



**WARNING: Do not plug in the cleaner until it is assembled.**

- 1 Carefully unpack all of the components.
- 2 Lift the cleaner body to the upright position.
- 3 Remove the two screws that are already attached to the body.
- 4 From the rear of the cleaner, align the handle with the groove and slide into the body. If necessary, use thumb and finger pressure to slide the handle into position.
- 5 Fasten the handle with the two screws.

### Floor nozzle height adjustment



Before using the cleaner, the floor nozzle height **5** must be set to the correct height.

Choose the setting which most closely matches your floor surface.

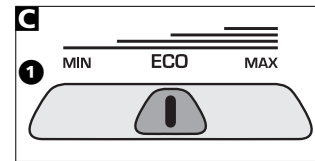
- Use the TOOLS setting when using the tools.

Note: The height adjustment only comes into effect when the handle is released by the handle release pedal **16**.

### Eco Switch

(Certain models only)

The Eco Switch **1** allows you to turn down the power when cleaning more delicate items, such as curtains and upholstery, saving energy and reducing costs.

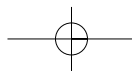


### Using on carpets

- 1 Place the cleaner in its upright position.
- 2 Set the carpet height adjustment knob **5** to the desired position.
- 3 Release the mains cable by revolving the quick release cleat **6** half-a-turn and extend the cable fully.
- 4 Plug the cable into the mains socket.
- 5 Step on the handle release pedal **16** to release the handle to the desired position.
- 6 Press the on/off button to the 'on' position.

**IMPORTANT:** To prevent damage to carpets, never leave the cleaner switched on in one place for an extended period.

- Never have the brushes set too low such that the cleaner is hard to push.



## Using the attachments

Follow steps 1-4 but set the carpet height adjustment knob to the TOOLS setting.

- 5 Remove the hose connector 17 from the rear of the cleaner. Lift the hose 8 from the top handle hook. Insert the hose clip 24 into the hose clip slot 15.

- Push the required attachment firmly onto the end of the hose.

- If additional length is required, attach one or both extension tubes 12.

- 6 Switch on 10.

- IMPORTANT: Always fix the hose clip 24 to the main body slot 15 when using the hose and tools.

- Never over extend the hose such that the cleaner is pulled over.

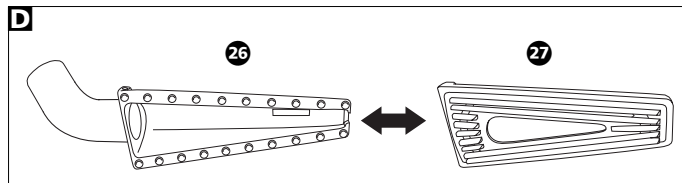
IMPORTANT: Turning the cleaner sideways helps prevent the cleaner being pulled along by the stretch hose.

## Using & cleaning the turbo nozzle

(Certain models only)

Attach the turbo nozzle 25 to the hose end connector 17.

Following use, your turbo nozzle may become clogged. Turn over the nozzle and pull away any hairs or fibres. If they are tightly wound around the brush, carefully snip the fibres with scissors, being careful not to damage the brush bar, pull away from the brush bar and dispose.



## Using the Stair and Hair tool

(Certain models only)

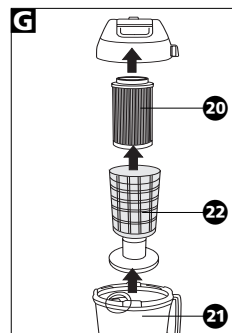
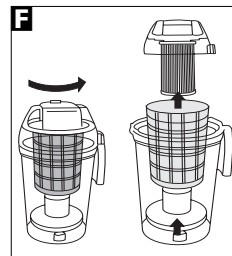
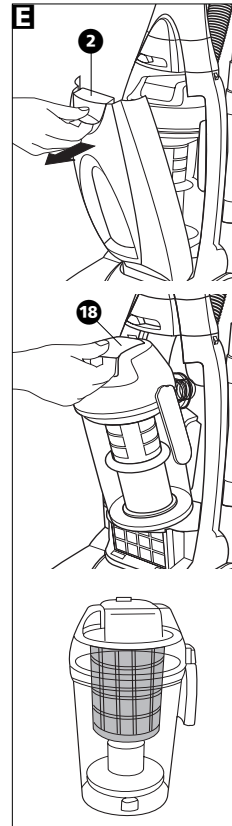
Attach the stair tool 26 to the hose connector 17 for effective stair cleaning.

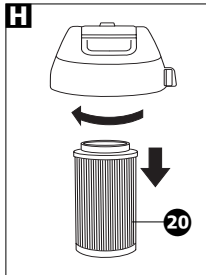
Attach the hair tool 27 to the stair tool for fantastic pet and human hair pick-up D.

## EMPTYING

Empty the dust canister regularly even if it does not look full, this will maintain the performance.

- 1 Remove the front cover 3 by lifting the cover release lever 2 E.
- 2 Lift-up the dust canister release 18 and pull the canister away from the main body.
- 3 Take the canister to the dustbin.
- 4 Turn the lid quarter-of-a-turn anti-clockwise to unlock, lift off the lid with pleated filter 20, put to one side F.
- 5 Lift out the central mesh filter 22 from the dust canister 21 G. Brush clean if necessary.
- 6 Empty out the dust canister 21.
- 7 Re-fit the central mesh filter.
- 8 Shake the pleated filter 20 to remove all dust.
- 9 Re-fit pleated filter with lid into the dust canister by lining up the two arrows and turning the lid quarter-of-a-turn clockwise to lock.
- 10 Re-fit dust canister into cleaner and push to lock into position.
- 11 Re-fit the front cover.

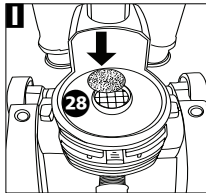




### SAFETY CUT-OUT

If the cleaner overheats, a motor protection thermostat will automatically switch the motor off. If this happens, **switch the cleaner off, unplug from the power supply and leave the cleaner to cool for at least 60 minutes.** Check the airways for blockages, empty the dust canister and clean the filters before restarting.

### CLEANING THE FILTERS



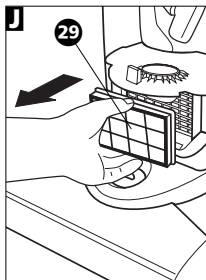
**To maintain suction, the pleated filter must be shaken clean each time the dust canister is emptied.**

Failure to clean the filter will reduce suction and could damage the motor if used for a prolonged period. This may invalidate the guarantee. If the filters become damaged, they must be replaced.

#### Pleated filter

This must be shaken clean at every emptying to maintain suction. To thoroughly clean it, wash it regularly.

To remove it from the dust canister lid, turn the filter quarter-of-a-turn anti-clockwise **I**. Wash in warm water (no detergent) and allow to air dry before refitting.



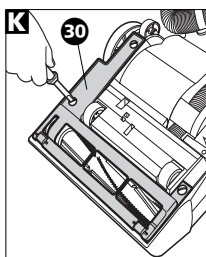
#### Motor protection filter

The motor protection filter **28** is located underneath the dust canister.

- 1 Remove the dust canister.
- 2 Lift out the filter and shake over a dustbin.

The filter may also be washed in water (no detergents). Allow the filter to air dry. Ensure the filter is thoroughly dry before refitting.

- 3 Replace the filter.



#### Exhaust filter

The exhaust filter is located below the dust canister compartment.

- 1 Remove the front cover **3**.
- 2 Remove the exhaust filter **29** by pulling forward at the top and lifting it away.
- 3 Take the filter out of the cage and shake vigorously over a dustbin. The filter may also be washed in warm water. Do not use detergents. The filter must be completely dry before re-fitting. Allow filters to air dry naturally.
- 4 Replace the filter and the front cover.

#### Changing the belt

If the brush bar stops rotating, it is likely that the drive belt has snapped (usually because the brush has been stalled). A spare belt is supplied. Replacement belts can also be obtained from Morphy Richards by calling the helpline number at the base of the page.

#### Accessing the floor nozzle

- 1 Disconnect the cleaner from the mains supply.
- 2 Put the switch to the 'off' position.
- 3 Remove the front cover and the dust canister.
- 4 Press the handle release pedal and place the cleaner face down, in a flat position on a soft surface (eg. carpet).
- 5 Using a flat bladed screwdriver or a coin, rotate the three cover fixings, a quarter-of-a-turn, from lock to unlock **K**.
- 6 Lift the base cover **30** from the rear fixing area first, the cover will rotate forward. Unhook the cover from the front edge and remove.

### Removing rotating brush & belt **L, M**

- 7 Lift the metal belt guard **31** out of the floor nozzle and put it safely to one side **L**.
- 8 Slide the belt past the end of the motor drive shaft **32**. If the belt has broken, remove all pieces and clean the drive shaft.
- 9 Lift the rotating brush **33** equally at both ends to slide it free of the floor nozzle **M**. Holding the ends of the brush, check it rotates freely or not, if not, it must be replaced. Call our Helpline for replacement parts or belts.

### Re-fitting rotating brush & belt **N**

- 10 Hook the belt **34** over the the drive shaft (the belt must be slid sideways past the end of the drive shaft). Note: The belt guard must have been removed first, see point 7 above.
- 11 Refit the belt guard, ensuring it is correctly located. Press down fully.
- 12 Pass the rotary brush through the belt, ensuring the correct end is located against the belt **N**.
- 13 Pull the brush forward (against the pull of the belt) and locate the square ends **35** of the brush into location slots in the floor nozzle **N**.
- 14 Rotate the brush by hand to ensure the belt is running in the centre of it's location on the brush.

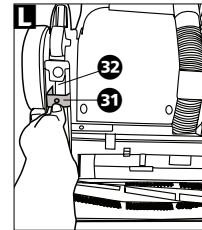
### Refitting the floor nozzle base cover **O**

- 15 Hook the base cover **30** into the front of the floor nozzle, ensuring all four hooks are engaged **O**.
- 16 Rotating the cover downwards and rearwards, slowly close the cover.

- 17 Tighten the three fixings, using a screwdriver to turn the fixings a quarter-of-a-turn to the lock position.

Note: If the cover will not fully close or fixings will not lock, lift the cover slightly and rotate the fixings until they are in the correct position for closure.

- 18 Return the cleaner to the upright position, re-fit the dust canister and front cover. Connect to the mains supply. Switch on to test.



### HELPLINE

If you have any difficulty with your appliance, do not hesitate to call us.

**We are more likely to be able to help than the store from where you bought it.**

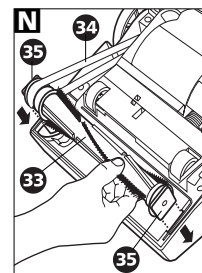
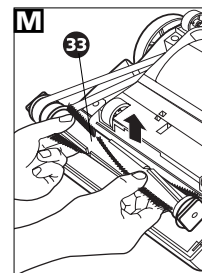
Please have the following information ready to enable our staff to deal with your query quickly.

- Name of the product
- Model number as shown on the underside of the appliance.
- Serial number as shown on underside of the appliance.

UK Helpline 0844 871 0949

Replacement Parts 0844 873 0715

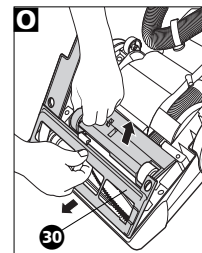
Ireland Helpline 1800 409 119



### WEBSITE

You may also contact us through our website, or visit the site to browse and purchase appliances, spare parts and accessories from the extensive Morphy Richards range.

[www.morphyrichards.com](http://www.morphyrichards.com)



## YOUR TWO YEAR GUARANTEE

It is important to retain the retailer's receipt as proof of purchase. Staple your receipt to this back cover for future reference.

Please quote the following information if the product develops a fault. These numbers can be found on the base of the product.

### Model no.

### Serial no.

All Morphy Richards products are individually tested before leaving the factory. In the unlikely event of any appliance proving to be faulty within 28 days of purchase, it should be returned to the place of purchase for it to be replaced.

If the fault develops after 28 days and within 24 months of original purchase, you should contact the helpline number quoting model number and serial number on the product, or write to Morphy Richards at the address shown.

You will be asked to return the product (in secure, adequate packaging) along with a copy of proof of purchase.

Subject to the exclusions set out below (1-7), the faulty appliance will then be repaired or replaced and dispatched usually within seven working days of receipt.

Morphy Richards products are intended for household use only.

Morphy Richards has a policy of continuous improvement in product quality and design. The company therefore reserves the right to change the specification of it's models at any time.

If, for any reason, this item is replaced during the 2 year guarantee period, the guarantee on the new item will be calculated from original purchase date. Therefore, it is vital to retain your original receipt or invoice to indicate the date of initial purchase.

To qualify for the two-year guarantee, the appliance must have been used according to the manufacturer's instructions. For example, the filters must have been regularly cleaned as instructed.

Morphy Richards shall not be liable to replace or repair the goods under the terms of the Guarantee where:

## EXCLUSIONS

- 1 The fault has been caused or is attributable to accidental use, mis-use, negligent use or used contrary to the manufacturer's recommendations or where the fault has been caused by power surges or damage caused in transit.
- 2 The appliance has been used on a voltage supply other than that stamped on the products.
- 3 Repairs have been attempted by persons other than our service staff (or authorised dealer).
- 4 The appliance has been used for hire purposes or non-domestic use.

- 5 The appliance is second hand.
  - 6 Morphy Richards are not liable to carry out any type of servicing work under the guarantee.
  - 7 Consumables such as the filters and belt are not covered by the guarantee.
- This guarantee does not confer any rights other than those expressly set out above and does not cover any claims for consequential loss or damage. This guarantee is offered as an additional benefit and does not affect your statutory rights as a consumer.
  - This guarantee is valid in the UK and Ireland only.



For electrical products sold within the European Community. At the end of the electrical products useful life, it should not be disposed of with household waste.

Please recycle where facilities exist. Check with your Local Authority or retailer for recycling advice in your country.

## morphy richards

**The After Sales Division  
Morphy Richards Ltd**  
Mexborough, South Yorkshire,  
England, S64 8AJ

Helplines (office hours)  
UK 0844 871 0949  
Spare Parts 0844 873 0715  
Republic of Ireland 1800 409 119

VC73332 MUK Rev 3 09/08

For details of other Morphy Richards products, plus replacement parts and accessories, please see our website:

[www.morphyrichards.com](http://www.morphyrichards.com)



**morphy richards®**

## SpillMaster



Please read and keep these instructions



### **Getting the best from your new attachment...**

#### **Use**

*This product is intended for picking-up liquids only. Picking up solid objects may cause blockages in the nozzle. If blockages occur, please detach and clean the SpillMaster as directed.*

*Do not cover the bleed holes when holding the attachment, otherwise there may be a risk of the cleaner overheating.*

*The SpillMaster must be attached securely and firmly to the vacuum cleaner hose or hose handle. It may be necessary to use one of the attachment adaptors, supplied.*

#### **Safety devices**

***If the unit is tipped over in use, safety valves will operate to prevent water escaping, no pick-up will be possible once these valves have operated. The valves will remain closed until the unit is returned to its correct upright position and the suction is switched off. Similarly, if the unit is overfilled, a float valve will operate, preventing any further pick-up. The suction must be switched off and the tank emptied before re-use.***

#### **Filter**

*Regularly remove, clean and dry the filter.*

#### **Cleaning**

*Empty and rinse the product with clean lukewarm water after every use. Leave to dry upside down for at least 24 hours or until completely dry before re-assembling the top unit to the tank. Do not place in or near heating appliances to dry.*



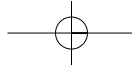
For replacement parts, help with using your Morphy Richards product, problems and lots more, contact us by phone or through our website.

VC70330 MUK Rev 2



UK Helpline: 0844 871 0949  
Replacement Parts: 0844 873 0715  
Ireland Helpline: 1800 409 119

[www.morphyrichards.com](http://www.morphyrichards.com)



## **IMPORTANT SAFETY INSTRUCTIONS**

The use of any electrical appliance or attachment requires the following common sense safety rules.

Primarily there is danger of injury or death and secondly the danger of damage to the appliance.

Please read these instructions before using the attachment.

### **Location**

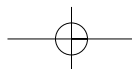
- This appliance is intended for domestic use only. Misuse or use for commercial or any other purpose will render the guarantee invalid.
- Do not use or keep this product outside.
- Do not store the appliance near hot surfaces, eg. ovens or heating appliances.

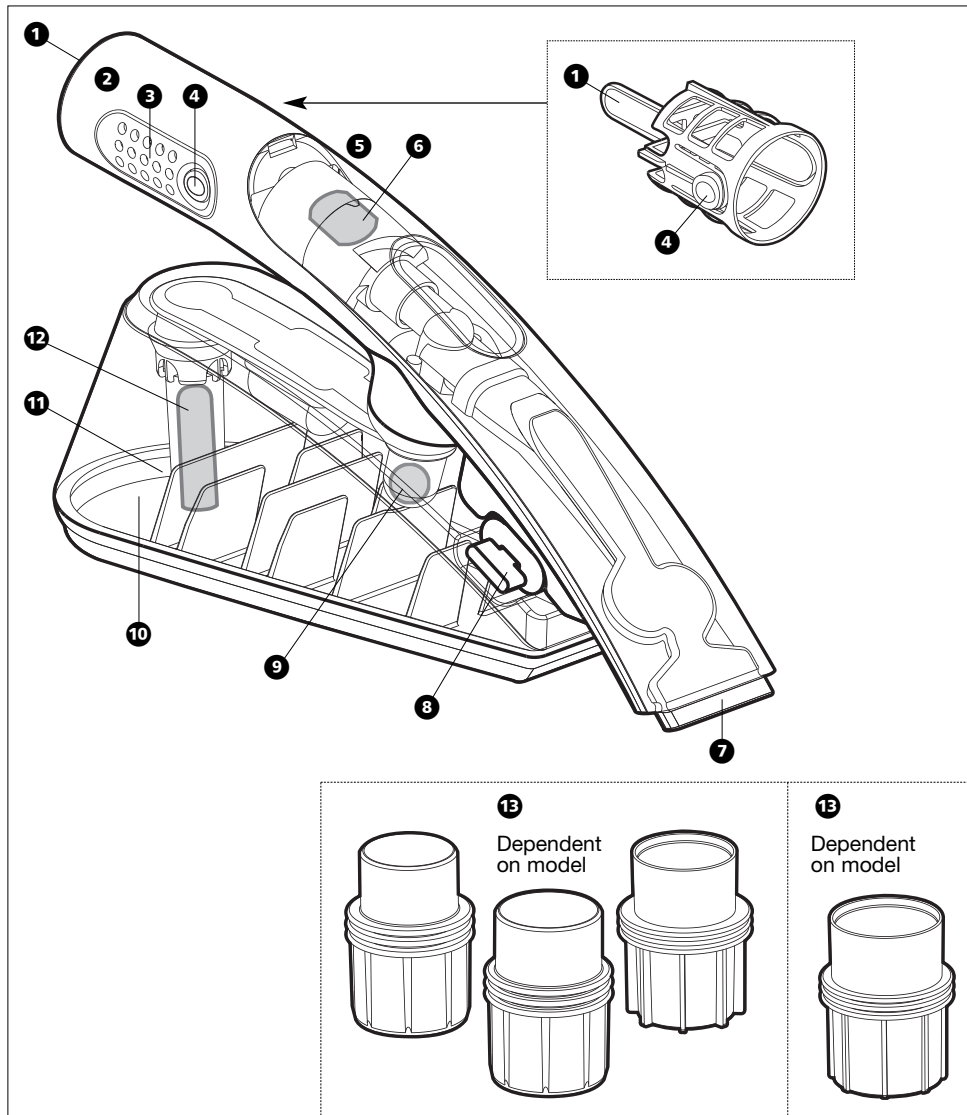
### **Personal safety**

- Do not touch the cleaner, cable or plug with wet hands.
- This product is not intended for use by persons (including children) with reduced physical, sensory or mental capabilities, or lack of experience and knowledge, unless they have been given supervision or instruction concerning the use of the product by a person responsible for their safety.
- Children should be supervised to ensure that they do not play with the appliance or attachment.

## **Product safety**

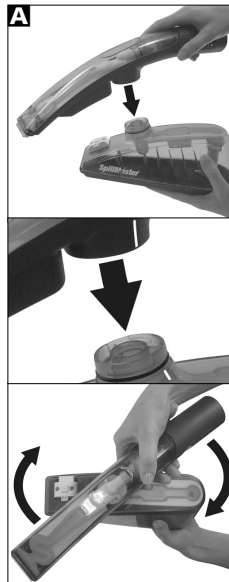
- Do not modify the product in any way.
- Use only as described in these instructions.
- Never attempt to pick-up solids. The SpillMaster is only designed to pick up liquids.
- Never pick-up inflammable liquids such as spirits.
- Never pick-up strong alkaline or acidic liquids such as bleach.
- Never pick-up volatile material such as copier toner.
- Never pick-up hazardous materials such as asbestos dust.
- Never pick-up very hot liquids such as boiling water.
- Never pick-up hot substances such as hot ashes.
- Keep the liquid away from the vacuum cleaner and the cleaner cable and plug.
- Ensure that the plug of the vacuum cleaner is removed from the socket outlet before cleaning or maintaining the appliance.





## FEATURES

- |                          |                              |  |
|--------------------------|------------------------------|--|
| 1 Filter                 | 5 Top unit                   | 10 Water tank  |
| 2 Hose / hose inlet      | 6 Tip-back safety device     | 11 Max fill line   |
| 3 Bleed holes            | 7 Nozzle                     | 12 Float safety device   |
| 4 Filter release buttons | 8 Water tank release button  | 13 Hose inlet adaptors<br>(up to 4 sizes, dependent<br>on model) |
|                          | 9 Tip-sideways safety device |  |



## ASSEMBLY

### Assembling the SpillMaster **A**

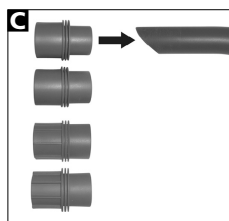
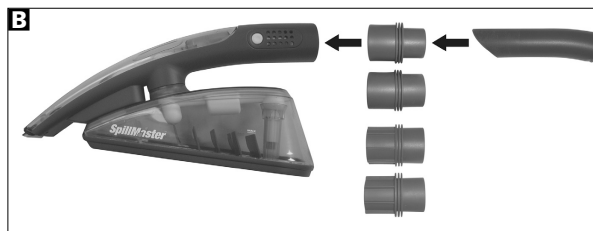
The SpillMaster may arrive in two parts.

To assemble the product, align the mark on the water tank with the mark on the top unit. Push the two parts together and rotate clockwise until the top part clicks into place.

### OPERATING THE SPILLMASTER

Depending on your model of cleaner, your SpillMaster may require an adaptor.

If required, choose the appropriate adaptor and fit as shown **B**.



### Attaching the SpillMaster to your vacuum cleaner

Assemble the vacuum cleaner according to its instruction booklet.

Ensure the vacuum cleaner is switched off before attaching the SpillMaster.

Attach the SpillMaster directly onto the vacuum hose with adaptor if required **C**.

It is not recommended to use any extension tubes when using the SpillMaster.

### USING THE SPILLMASTER

Turn the vacuum cleaner on.

Place the SpillMaster on the floor and tilt forwards so the nozzle touches the floor **D**.



You are now ready to pick up any liquid spills.

The SpillMaster can be used on all floor types but must only be used for liquid spills. It has not been designed to suck up solids.

For maximum effectiveness, use the SpillMaster in a steady, slow motion, pulling it towards yourself. Always ensure the SpillMaster is tilted forwards **E**.



Ensure only the nozzle touches the floor, so the water tank is not dragged through the liquid spill.

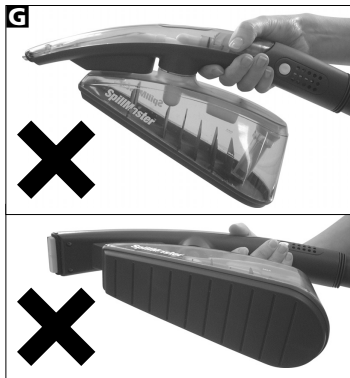
Backward strokes are more effective on deeper carpets.

## SAFETY FEATURES

As well as the hose filter, there are three other main safety features **F** which will cut off suction to the SpillMaster in the event of improper use:

If the SpillMaster is tilted backwards, a slug in the nozzle suction chamber will slide backwards, blocking the suction to the hose **G**.

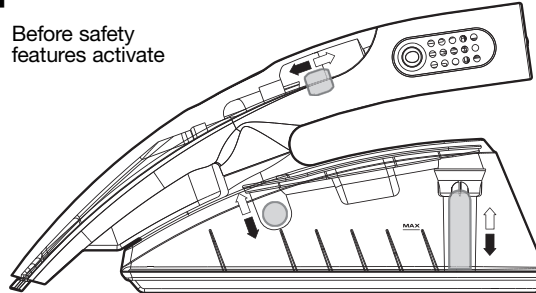
If the SpillMaster is tilted sideways, a slug in the suction chamber connecting to the liquid tank will slide upwards, blocking the suction in the unit **G**.



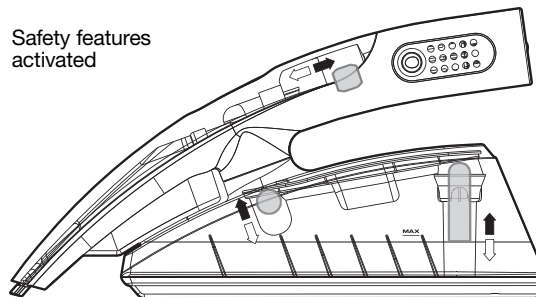
If the SpillMaster is overfilled with liquid, a float in the liquid tank will rise upwards, blocking the suction in the unit.

If any of the above occurs, turn off your vacuum cleaner immediately, empty the tank, reassemble the SpillMaster and resume use as described in 'Using the SpillMaster' section.

**F** Before safety features activate



Safety features activated



## EMPTYING THE SPILLMASTER

Ensure the vacuum cleaner power is switched off.

Remove the vacuum hose from the SpillMaster.

Take the SpillMaster to a sink or drain to empty.

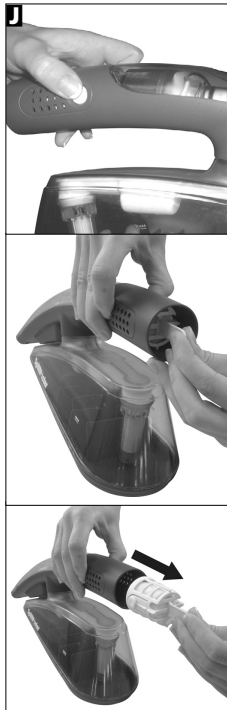
Press down on the tank release button with one finger **H**.

With the other hand, rotate the handle section anti-clockwise as far as possible **H**.

Pull upwards to separate the unit into its two parts.

Empty the contents of the reservoir by tipping it upside down over a sink or drain **I**.





## ■ **CLEANING THE SPILLMASTER**

It is recommended that the SpillMaster is regularly cleaned to prevent any build up of residue.

Remove the filter by squeezing the two white areas with a finger and thumb and pull the white tab until the filter is clear of the product **J**.

Separate the SpillMaster into its two parts as described in the 'Emptying the SpillMaster' section.

Empty the contents of the base unit over a sink and then rinse the reservoir with lukewarm water to remove any residue.

Leave to dry upside down for at least 24 hours or until completely dry **K**.

Note: The SpillMaster should not be cleaned in the dishwasher.

## ■ **HINTS & TIPS**

(also see 'Safety Features')

- The SpillMaster can be used on all floor types but must only be used for liquid spills.
- It has not been designed to suck up solids. If any solids have accidentally been sucked up, follow the advice in the 'Cleaning' section.
- Hold the SpillMaster ensuring the bleed holes are not obstructed **L**. If the bleed holes are covered, this could result in your vacuum cleaner over heating.
- Do not attempt to overfill past the max fill line. If overfilled, the float safety cut-out will be activated and the suction will cease.
- If the float is activated, switch the vacuum cleaner off and empty the reservoir. The float will drop back into its original position.



- After use, empty the contents of the water tank, clean and dry the product fully.
- Regularly check that the filter is not blocked, dirty or damp. If the filter becomes dirty, rinse in lukewarm water and leave to dry fully before re-use.
- If the filter becomes damaged, it must be replaced. Call our helpline for replacement parts.
- When carrying the SpillMaster to the sink, ensure it is kept horizontal to prevent any spillage.

## ■ **PRODUCT STORAGE**

- When finished, do not store near any heat sources.
- Store in an upright, flat position.
- Only store when dry.

## ■ **HELPLINE**

If you have any difficulty with your appliance, do not hesitate to call us.

**We are more likely to be able to help than the store from where you bought it.**

Please have the following information ready to enable our staff to deal with your query quickly.

- Name of the product
- Model number as shown on the underside of the appliance.
- Serial number as shown on underside of the appliance.

**UK Helpline 0844 871 0949**

**Replacement Parts 0844 873 0715**

**Ireland Helpline 1800 409 119**

## **YOUR TWO YEAR GUARANTEE**

It is important to retain the retailer's receipt as proof of purchase. Staple your receipt to this back cover for future reference.

Please quote the following information if the product develops a fault. These numbers can be found on the base of the product.

### **Model no.**

### **Serial no.**

All Morphy Richards products are individually tested before leaving the factory. In the unlikely event of any appliance proving to be faulty within 28 days of purchase, it should be returned to the place of purchase for it to be replaced.

If the fault develops after 28 days and within 24 months of original purchase, you should contact the Helpline number quoting Model number and Serial number on the product, or write to Morphy Richards at the address shown.

You may be asked to return a copy of proof of purchase.

Subject to the exclusions set out below (see Exclusions), the faulty appliance will then be repaired or replaced and dispatched usually within 7 working days of receipt.

If you suspect a fault, follow the simple checks detailed below before retrying the appliance or calling the helpline.

- Check for blockages.
- Check the safety devices have not operated.

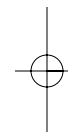
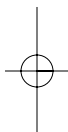
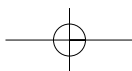
If, for any reason, this item is replaced during the 2 year guarantee period, the guarantee on the new item will be calculated from the original purchase date. Therefore, it is vital to retain your original till receipt or invoice to indicate the date of initial purchase.

To qualify for the 2 year guarantee, the appliance must have been used according to the instructions supplied.

## **EXCLUSIONS**

Morphy Richards shall not be liable to replace or repair the goods under the terms of the guarantee where:

- 1** The fault has been caused or is attributable to accidental use, misuse, negligent use or used contrary to the manufacturer's recommendations or where the fault has been caused by power surges or damage caused in transit.
  - 2** Repairs have been attempted by persons other than our service staff (or authorised dealer).
  - 3** The appliance has been used for hire purposes or non domestic use.
  - 4** The appliance is second hand.
  - 5** Morphy Richards are not liable to carry out any type of servicing work under the guarantee.
  - 6** The guarantee excludes consumables such as filters.
- This guarantee does not confer any rights other than those expressly set out above and does not cover any claims for consequential loss or damage. This guarantee is offered as an additional benefit and does not affect your statutory rights as a consumer.
  - This guarantee is valid in the UK and Ireland only.



For electrical products sold within the European Community. At the end of the electrical products useful life, it should not be disposed of with household waste.

Please recycle where facilities exist. Check with your Local Authority or retailer for recycling advice in your country.

Morphy Richards products are intended for household use only.

Morphy Richards has a policy of continuous improvement in product quality and design. The company, therefore reserves the right to change the specification of it's models at any time.

**morphy richards®**

**The After Sales Division  
Morphy Richards Ltd**  
Mexborough, South Yorkshire,  
England, S64 8AJ

Helplines (office hours)  
UK 0844 871 0949  
Spare Parts 0844 873 0715  
Republic of Ireland 1800 409 119

VC70330 MUK Rev 2 07/08

For details of other products in the Morphy Richards range, please see our website . . .

