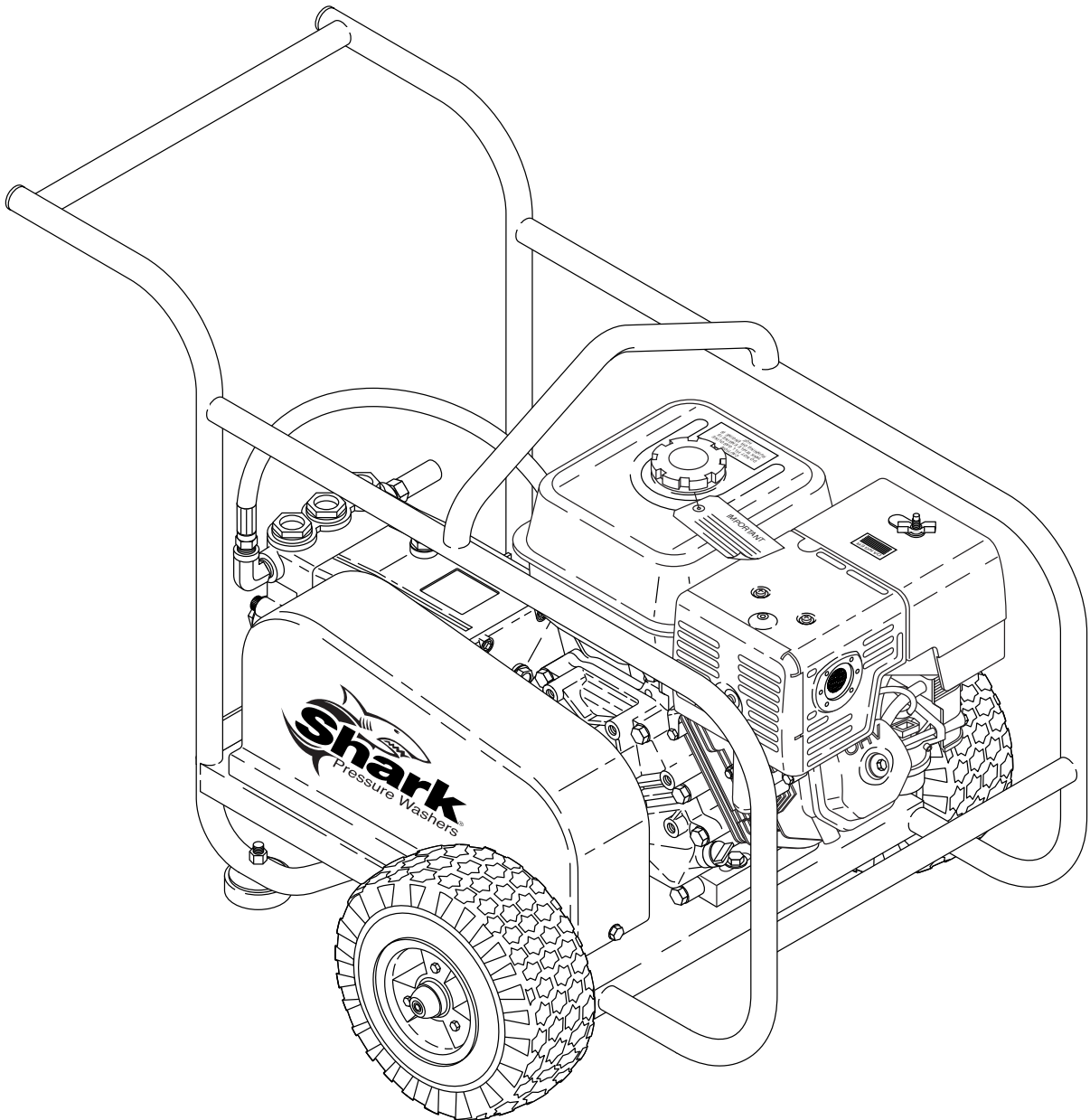




# MODEL: B4030H

## OPERATING INSTRUCTION AND PARTS MANUAL



**SHARK PRESSURE WASHERS ■ 4275 N.W. Pacific Rim Blvd. ■ Camas, WA 98607 ■ USA**

For technical assistance or the Shark Dealer nearest you, call 1-800-771-1881.

## MACHINE SPECIFICATIONS

- **Pump Volume At Pump Head:**

**B4030H** 3.0 GPM

- **Pump Pressure At Pump Head:**

**B4030H** 4000 PSI

- **Machine Power:**

**B4030H** 13 HP Gasoline Engine  
Manual Start

- **Shipping Weight:**

**B4030H** 270 Lbs.

- **Machine Dimensions:**    **B4030H**    Length = 42"    Width = 27"    Height = 30"

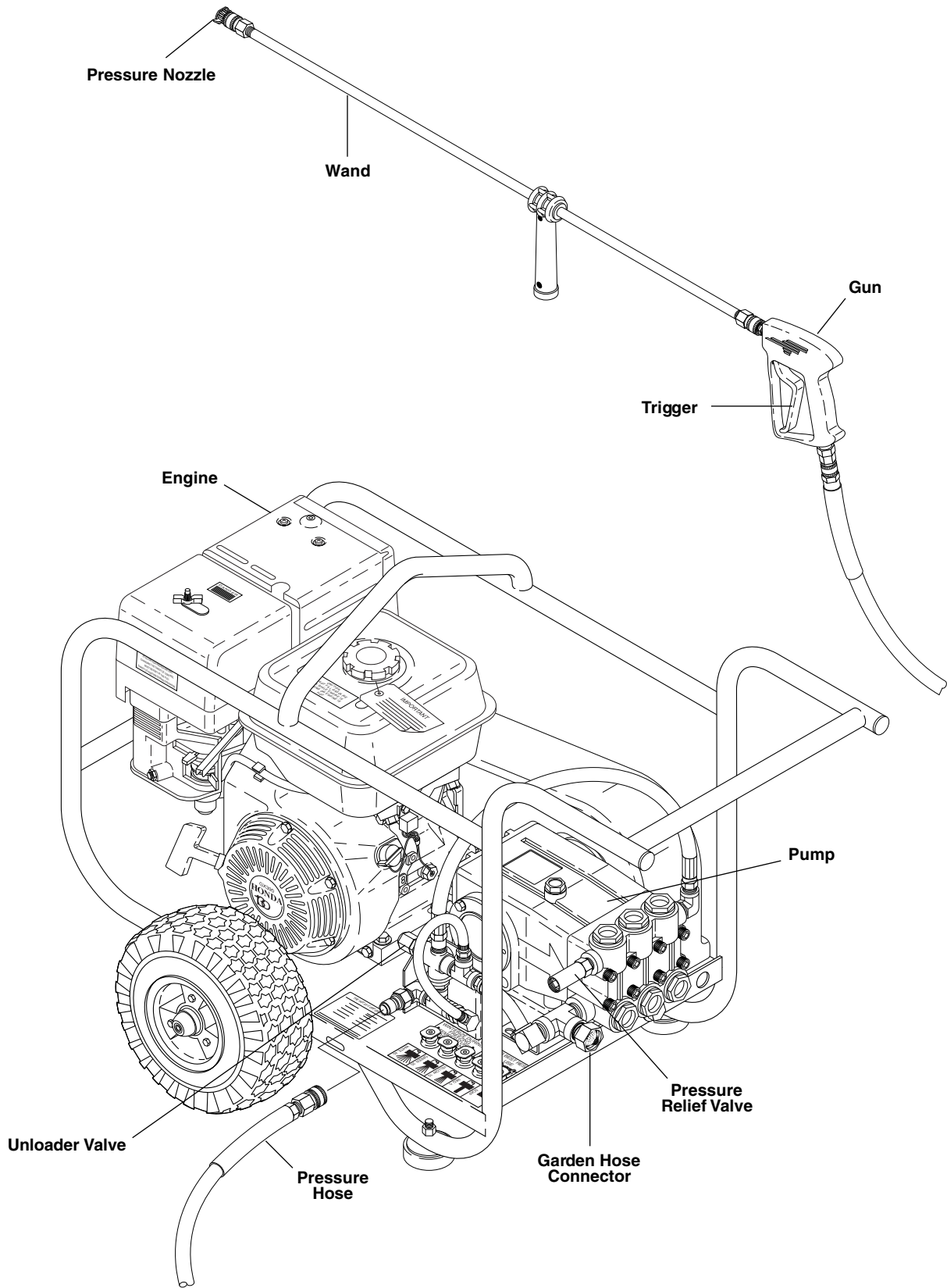
Output specifications are based on engine power curves at 100 meters above sea level and 25° C ambient temperature in accordance with SAE J1349.

# CONTENTS

Component Identification .....	4	Maintenance & Service .....	8-9
Introduction .....	5	Machine Assembly & Parts List .....	10-11
Important Safety Information .....	5-6	Trigger Gun/Wand Assembly & Parts List .....	12
Assembly Instructions .....	6	Pump Assembly & Parts List .....	13
Installation .....	6-7	Pump Exploded View & Parts List .....	14-15
Pre-Operation Checklist .....	7	Troubleshooting Guides .....	16
Operating Instructions .....	7-8	Preventive Maintenance .....	17
Washing Procedures .....	8	Oil Change Record .....	17
Shutdown Procedures .....	8	Warranty	
Storage .....	8		

<b>SERIAL NUMBER:</b>
<b>DATE PURCHASED:</b>
<b>FOR SALES AND SERVICE, PLEASE CONTACT:</b>

**COMPONENT IDENTIFICATION**



## INTRODUCTION

Thank you for purchasing a Shark pressure washer.

This manual covers the operation and maintenance of the B4030H pressure washer. All information in this manual is based on the latest product information available at the time of printing.

Shark reserves the right to make changes at any time without incurring any obligation.

**The B4030H Series was designed for maximum use of 4 hours per day, 5 days per week.**

### Owner/User Responsibility:

The owner and/or user must have an understanding of the manufacturer's operating instructions and warnings before using this Shark pressure washer. Warning information should be emphasized and understood. If the operator is not fluent in English, the manufacturer's instructions and warnings shall be read to and discussed with the operator in the operator's native language by the purchaser/owner, making sure that the operator comprehends its contents.

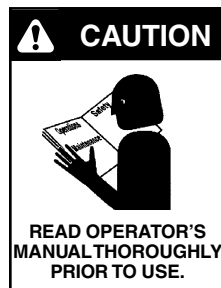
Owner and/or user must study and maintain for future reference the manufacturers' instructions.

The operator must know how to stop the machine quickly and understand the operation of all controls. Never permit anyone to operate the engine without proper instructions.

**This manual should be considered a permanent part of the machine and should remain with it if machine is resold.**

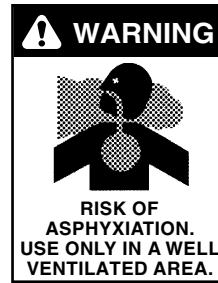
**When ordering parts, please specify model and serial number.**

## IMPORTANT SAFETY INFORMATION



**CAUTION:** To reduce the risk of injury, read operating instructions carefully before using.

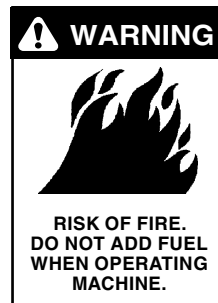
1. Read the owner's manual thoroughly. Failure to follow instructions could cause malfunction of the machine and result in death, serious bodily injury and/or property damage.
2. All installations must comply with local codes. Contact your electrician, plumber, utility company or the selling distributor for specific details.



**WARNING:** Risk of asphyxiation — Use this product only in a well ventilated area.

3. Avoid installing machines in small areas or near exhaust fans. Exhaust contains poisonous carbon monoxide gas; exposure may cause loss of consciousness and may lead to

death. It also contains chemicals known, in certain quantities, to cause cancer, birth defects or other reproductive harm.



**WARNING:** Flammable liquids can create fumes which can ignite causing property damage or severe injury.

**WARNING:** Risk of fire — Do not add fuel when the product is operating.

**WARNING:** Risk of explosion — Do not spray flammable liquids.

4. Do not place machine near flammable objects as the engine is hot.
5. Allow engine to cool for 2 minutes before refueling. If any fuel is spilled, make sure the area is dry before testing the spark plug or starting the engine. (Fire and/or explosion may occur if this is not done.)  
When refueling gasoline engines on mobile or portable equipment, make sure to refuel:
  - a. outdoors;
  - b. with the engine on the equipment stopped;
  - c. with no source of ignition within 10 feet of the dispensing point; and
  - d. with an allowance made for expansion of the fuel should the equipment be exposed to a higher ambient temperature.

In an overfilling situation, additional precautions are necessary to ensure that the situation is handled in a safe manner.



**WARNING:** High pressure stream of water that this equipment can produce can pierce skin and its underlying tissues, leading to serious injury and possible amputation.



**WARNING:** High pressure spray can cause paint chips or other particles to become airborne and fly at high speeds. To avoid personal injury, eye safety devices must be worn.

6. Eye safety devices and foot protection must be worn when using this equipment.
7. High pressure developed by these machines will cause personal injury or equipment damage. Use caution when operating. Do not direct discharge stream at people, or severe injury or death will result.
8. Never make adjustments on machine while in operation.
9. Do not operate with spray gun in the off position for extensive periods of time as this may cause damage to the pump.
10. The best insurance against an accident is precaution and knowledge of the machine.
11. Shark will not be liable for any changes made to our standard machines, or any components not purchased from Shark.
12. Read engine safety instructions provided.



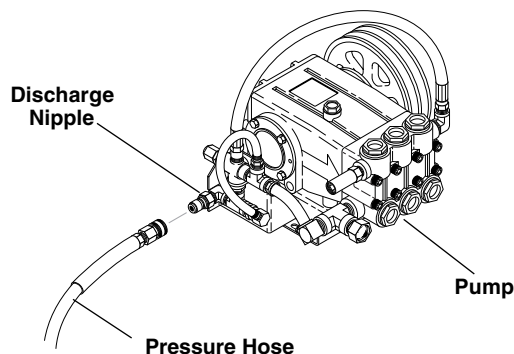
**WARNING:** Keep water spray away from electrical wiring or fatal electric shock may result.

13. Never run pump dry or leave spray gun closed longer than 5 minutes.
14. Do not allow children to operate the pressure washer at any time.
15. Inlet water supply must be cold and clean fresh water.

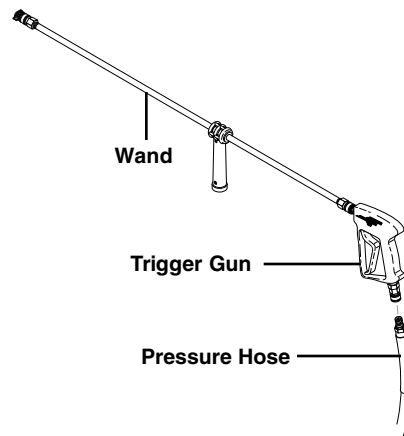
## ASSEMBLY INSTRUCTIONS

### Pressure Hose, Trigger Gun and Wand:

Install the pressure hose on the pressure washer as shown in illustration.



Assemble wand components as shown below.



## INSTALLATION

Place machine in a convenient location providing ample support, drainage and room for maintenance.

**IMPORTANT:** Proper initial installation of equipment will assure more satisfactory performance, longer service life, and lower maintenance cost.

**IMPORTANT:** The use of a backflow preventer on the water supply hose is recommended and may be required by local code.

### Location:

The location should protect the machine from damaging environmental conditions, such as wind, rain, and freezing.

This machine should be run on a level surface where it is not readily influenced by outside sources such as strong winds, freezing temperatures, rain, etc. It should be located to allow accessibility for refilling of fuel, adjustments and maintenance. Normal precautions should be taken by the operator of the machine to prevent moisture from reaching the electrical controls.

It is recommended that a partition be made between the wash area and the machine to prevent water spray from coming in contact with the machine. Excess moisture reaching any electrical components or electrical controls will reduce machine life and may cause electrical shorts.

### Avoid small locations or areas near exhaust fans.

In addition, the pressure washer should never be operated in an enclosed area where high ambient temperatures exist. High ambient temperatures (above 100°F) can cause engine oil failure and will greatly reduce the engine's performance.

## Gasoline Engine:

This gasoline engine is preset for operation at altitudes below 3000 feet above sea level. If operated at higher altitudes, it may be necessary to install a high altitude main jet in the carburetor. Contact an authorized engine sales and service center for details.

## PRE-OPERATION CHECK

- Check pump oil level. (Use SAE 30W non-detergent oil). Dipstick is located on top of pump.
- Cold water supply (minimum 6 GPM, 5/8", 20 PSI)
- Hose, wand, nozzle (nozzle size per serial plate)
- Water filter (intact, non restrictive)
- Fuel (unleaded 86 or higher octane)
- Open spray gun to relieve pressure before starting.
- Engine oil (SAE 10W30)

**These machines are designed for outdoor use. Machine must be stored indoors when not in use.**

## OPERATING INSTRUCTIONS

1. Read all manuals provided with this pressure washer. Become familiar with location and function of all operating and safety controls.

**WARNING: Check hoses, fittings, wand, trigger gun and fuel connections daily for signs of wear, cracks and looseness, and replace as required.**

2. Connect water supply hose to the garden hose connector located on pump. The water faucet and supply hose must be capable of providing a minimum of 3.0 gallons per minute.

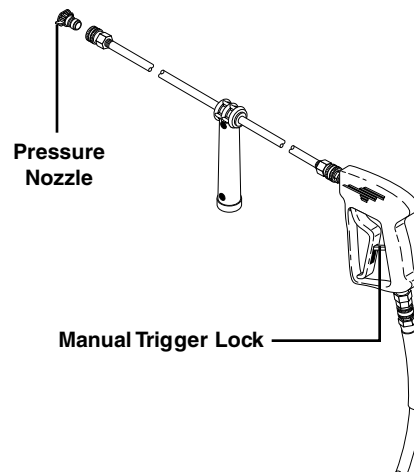
**WARNING: Do not fill engine fuel tank while engine is running or hot. Let engine cool before refueling or spontaneous fire may result. Fuel spillage or vapors could ignite if engine is hot.**

3. Fill the engine fuel tank. It may be necessary to use a funnel or long spout to clear the chassis if filling with a gas can. Do not overfill, fill to the bottom of filler neck only. Use lead free gasoline minimum 86 octane. **Do not use gasoline containing more than 5% methanol, 10% ethanol or 15% MTBE.** Refer to the provided gasoline engine manual for additional details.
4. Check pump and engine oil levels.

**IMPORTANT: Before installing pressure nozzle on initial start-up, turn on the water supply and allow water to run from the end of the wand until clear to prevent the nozzle from clogging.**

**IMPORTANT: If the pressure washer has not been used for an extended period of time, remove the pressure nozzle from the end of the wand and turn on water supply. Allow water to run from the end of the wand until clear.**

5. Install the proper pressure nozzle for your cleaning needs on end of wand. Refer to illustration below.



**IMPORTANT: The trigger gun provided with this pressure washer is equipped with a manual trigger lock to prevent accidental operation of the trigger gun. The trigger lock should be used whenever the trigger gun is not in use.**

### To Start:

**IMPORTANT: The water must be turned on before starting. Running the pump dry will cause damage and void warranty.**

**IMPORTANT: Do not allow machine to run with trigger of the trigger gun released for more than 10 minutes at any one time or damage to pump may occur.**

1. Turn on water supply.
2. Hold wand firmly, release trigger of trigger gun.
3. Place engine ON/OFF switch to ON position.
4. Turn fuel shut-off valve to ON position (if so equipped). Move choke lever to full choke position (choke may not be needed on warm engine). Move throttle lever to half throttle position.
5. Pull the rope starter slowly until resistance is felt, then pull briskly. Do not allow the rope starter to snap back against the engine. Return it gently to prevent damage to the starter.
6. When the engine starts, move choke lever until engine runs smoothly. Move throttle lever to full throttle position. When engine warms, move choke lever to "no choke" position.

**NOTE: If engine fails to start, refer to Troubleshooting Guide.**

7. Squeeze trigger of trigger gun and allow air to purge from system.

## WASHING PROCEDURES



**WARNING:** Some detergents may be harmful if inhaled or ingested, causing severe nausea, fainting or poisoning. The harmful elements may cause property damage or severe injury.

**DANGER:** Do not place hands or fingers in front of high pressure spray. Bodily injury may result.

1. Test pressure and spray pattern on hard surface (i.e. cement) to gauge distance and impact of water spray.
2. If detergents are to be used, only use detergents intended for pressure washers. Follow instructions on the detergent container.
3. Wash from the bottom to the top, using side to side motions. This washes away heavy dirt and allows the detergent to soak as you work toward the top.
4. Do not wash at a 90° angle to the work (straight at it). This will allow water to splash back at you and reduces your cleaning power. Wash at a 30° to 60° angle to the work. This will allow the water to splash away from you and the water will wash the dirt away faster and easier.
5. Use the full width of the spray pattern to wash in a wide path. Overlap spray paths for complete coverage. Wash from side to side, using slow, steady motions.
6. The nozzle should be 12" to 24" from the work, closer for tough areas. Be careful on painted or delicate surfaces, the pressure may damage surface if nozzle is too close.
7. Small parts should be washed in a basket so the pressure does not push them away. Larger, light-weight parts should be clamped down so the pressure does not push them away.

**NOTE:** If pressure washer is running and not being used for more than 2 minutes, turn off engine.

## SHUTDOWN PROCEDURES

1. Move throttle lever to idle position.
2. Turn engine ON/OFF switch to the OFF position.
3. Turn fuel shut-off valve to OFF position (if so equipped).
4. Turn water supply off.

**CAUTION:** Do not allow pump to run without water.

5. Squeeze trigger of trigger gun to relieve system pressure.

## STORAGE



**DANGER:** Do not store flammable liquids (gasoline, diesel fuel, solvents, etc.) near pressure washer, or in non-ventilated areas.

Protect from freezing by storing in a heated area, or by flushing the system with antifreeze (use an automotive engine antifreeze or windshield washer solvent to anti-freeze). To flush the system with antifreeze, the following steps are to be followed:

1. Attach a short length of hose to the garden hose connector located on the pump.
2. Place the other end of the hose into a container of antifreeze.
3. Start engine and allow to run until antifreeze flows from the end of the wand.
4. Squeeze and release the trigger of the trigger gun several times to antifreeze the unloader system.
5. Release the trigger of the trigger gun. Stop engine.
6. Squeeze the trigger of the trigger gun to relieve system pressure.

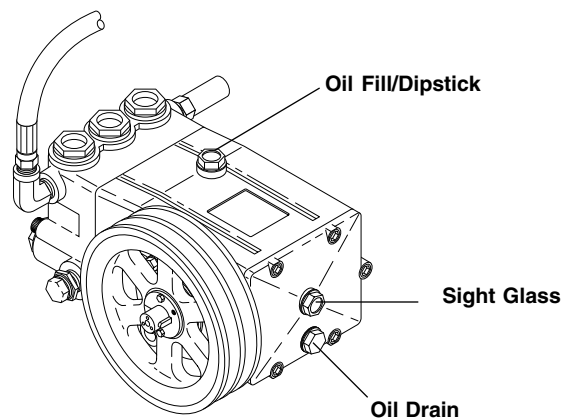
If the pressure washer is not to be used for an extended length of time, it is recommended that the system be flushed with antifreeze for rust protection. Refer to the Gasoline Engine Manual for engine storage information.

## MAINTENANCE & SERVICE

**WARNING:** Unauthorized machine modification or use of non-approved replacement parts may cause personal injury and/or property damage and will void the manufacturer warranty.

### Pump:

**Lubrication:** To lubricate pump, use 10W30 non-detergent oil for pump crankcase. Crankcase must be filled to red dot on oil gauge found on the rear of the pump (refer to illustration below). During the break-in-period, make





sure the oil is changed after the first 25 hours of operation. After that, replace oil every 3 months or 300 hours of operation, whichever comes first.

## Proper Pump Care:

- **Do not** pump acids.
- **Do not** allow pump to run dry.
- Winterize if storing in freezing temperatures, refer to **Storage** for details.
- Use a water softener on the water system if known to be high in mineral content.
- Use only high quality detergents and follow manufacturer's mix recommendations.
- Flush the system with clear water immediately after using detergent solutions.
- Clean filter screen on detergent inlet line periodically.
- Flush the pressure washer system with antifreeze if storing for an extended period of time, refer to **Storage** for details.

## Gasoline Engine:

Refer to the provided gasoline engine manual for recommended maintenance.

## Pressure Relief Valve:

The pressure relief valve on this pressure washer has been factory set and sealed and is a **field nonadjustable part**. For replacement refer to Pump Assembly illustration on page 13.

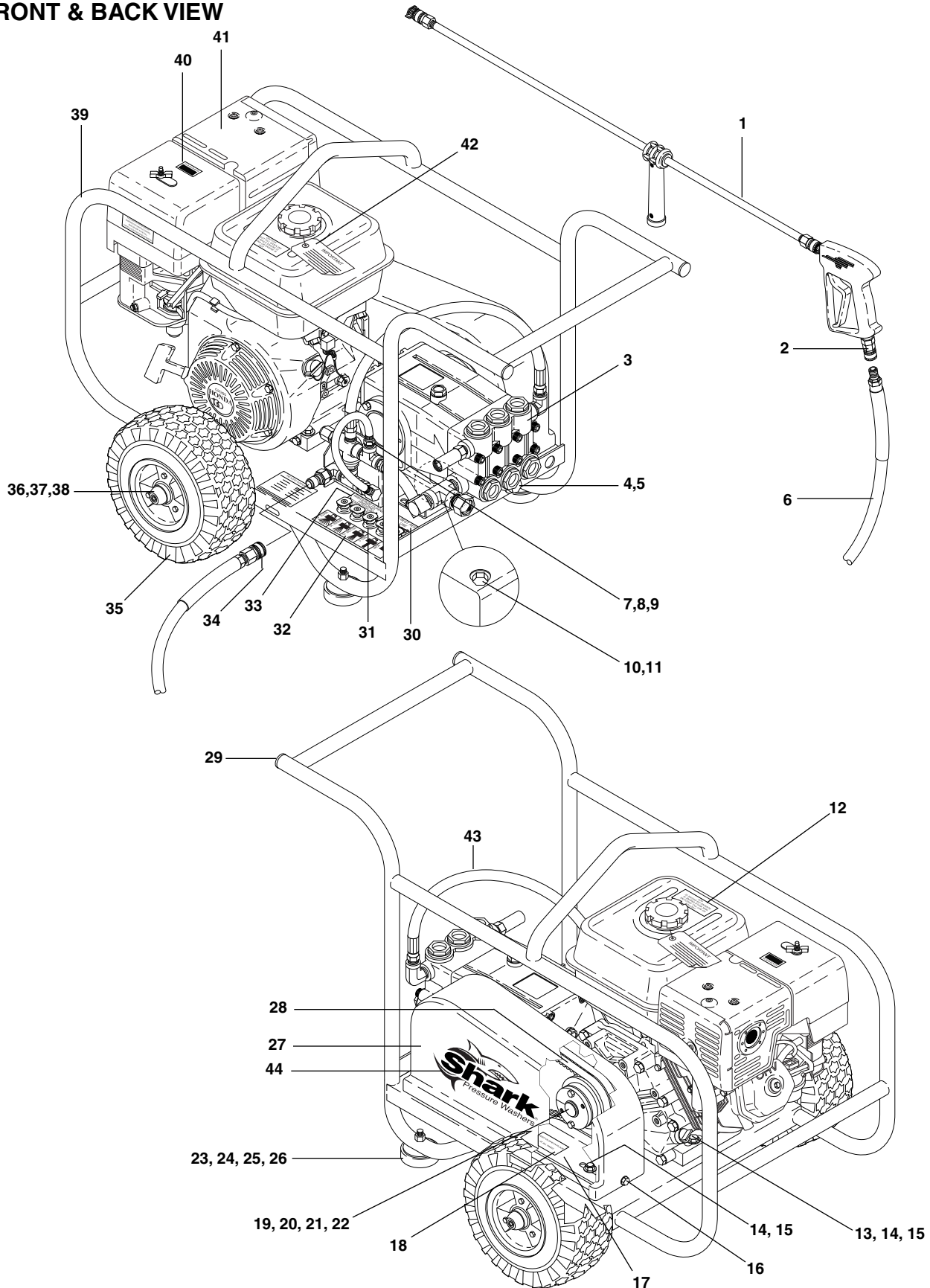
***WARNING: Tampering with the relief valve's factory setting may cause personal injury and/or property damage, and will void the manufacturer warranty.***

## Unloader Valve:

The unloader valve on this pressure washer has been factory set and sealed and is a **field nonadjustable part**. For replacement refer to Pump Assembly illustration on page 13.

***WARNING: Tampering with the unloader valve's factory setting may cause personal injury and/or property damage, and will void the manufacturer warranty.***

**MACHINE ASSEMBLY**  
**FRONT & BACK VIEW**

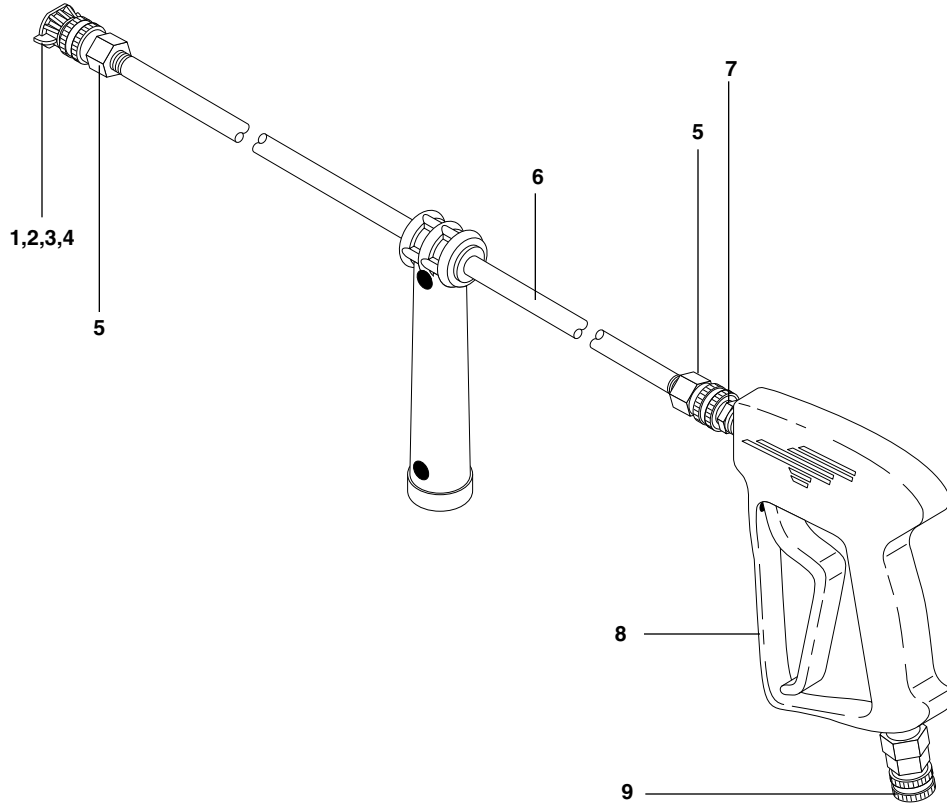


## **MACHINE ASSEMBLY**

### **PARTS LIST**

<b>ITEM</b>	<b>PART NO.</b>	<b>DESCRIPTION</b>	<b>QTY.</b>	<b>ITEM</b>	<b>PART NO.</b>	<b>DESCRIPTION</b>	<b>QTY.</b>
1	4-0110341	Wand Assembly, w/ Side Grip	1	27	2-011720	Belt Guard, Plastic, Blk Shark	1
	4-012421	Gun Assy, w/ SS Fem Coup & STL Nipple	1	28	5-604038	Belt, BX 38	2
2	2-20061	Nipple, 3/8" x 3/8", SS, NPT ST, Female	1	29	2-01443	Plug, Plastic 1-1/4"	2
3	5-1808	Pump, Hawk, HC930R	1	30	11-3204	Label, Use Shark Detergent	1
	5-3310	Unloader, XSM 4500 WP	1	31	2-0103	Grommet, Rubber, Nozzle Holder	5
4	90-102751	Bolt 1/2" x 3-1/2", NC HH	1	32	11-3218	Label, Nozzle Identification	1
5	90-3096	▲ Washer 1/2", Flat	1	33	11-3213	Label, Caution Winterize	1
6	4-020750RCS	Hose, 3/8" x 50', 2 Wire, Red, SS, Fem Coup x STL Male Plug	1	34	2-2002	Coupler, 3/8" Female	1
7	90-10135	U Bolt 1/4" x 1", 1/4" x 2", 1/4" w/ Plate	1	35	4-0301	Wheel & Tire CX PL, 6" Mag	2
8	90-2000	Nut 1/4", ESNA, NC	2		95-07104000	Axle, 5/8" x 26.25", Shark	1
9	90-4000	Washer 1/4", Flat, SAE	2	36	90-200422	Cap, 5/8" Axle Hub, Black	2
10	90-10343	Bolt 10 mm x 20 mm, HH	4	37	90-200511	▲ Nut, .61" ID, Push Flat	2
11	90-400910	Washer 7/16", Lock Split Ring	4	38	90-40181	▲ Washer, Nylon Spacer	2
12	11-3203	Label, Caution, Gasoline, Red	1	39	95-07104003	Frame, Weld Assy, Shark	1
13	90-1010	Bolt 5/16" x 1-3/4", NC HH	4	40	11-3211	Label, Warning, Carbon Monoxide	1
14	90-4001	Washer 5/16", Flat, SAE	12	41	5-010721	Engine, Honda, GX390K1QA2, 13 HP	1
15	90-2001	Nut 5/16", ESNA, NC	8	42	11-3101	Tag, Gasoline, Engine	1
16	90-1001	Bolt 1/4" x 3/4", NC HH	3	43	4-02047825	Hose, 3/8" x 22", 2 Wire, 3/8" Male Swivel x 3/8" Female	1
17	95-07104016	Bracket, Pump/Belt Guard Mount	1	44	11-3229	Label, Shark Belt Guard	1
18	11-3216	Label, Belt Guard Warning	1			▲ Not Shown	
19	5-40503201	Pulley, 2BK32H	1				
20	5-511100	Bushing, H X 1"	1				
21	90-5011	Key Stock, 1/4" x 1"	1				
22	90-50046	Clip, Retaining, 10 mm Blk	1				
23	2-01041	Pad, Soft Rubber, 50 Duno	2				
24	90-4002	▲ Washer 3/8", Flat, SAE	6				
25	90-1021	▲ Bolt 3/8" x 2-1/2", GR5 Zinc	2				
26	90-2002	Nut 3/8", ESNA, NC	2				

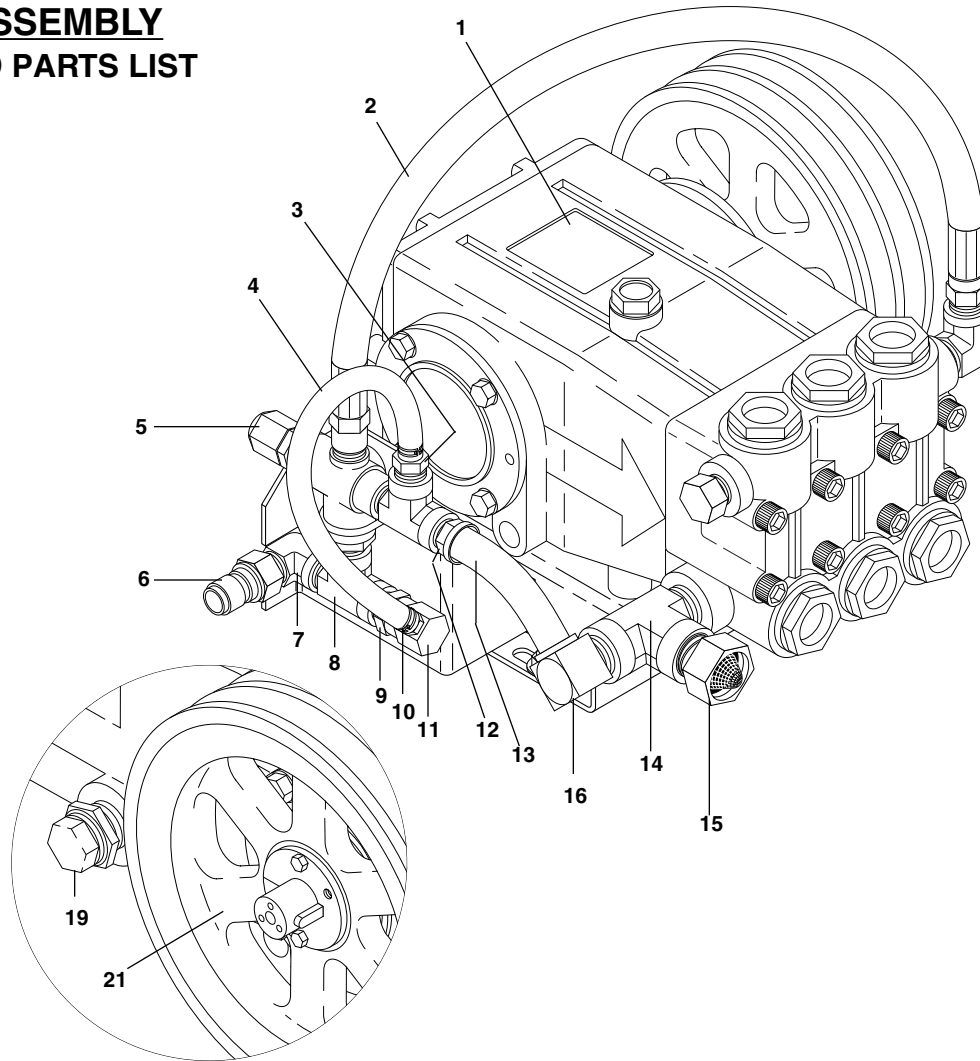
**TRIGGER GUN/WAND ASSEMBLY**  
**VIEW AND PARTS LIST**



ITEM	PART NO.	DESCRIPTION	QTY.
1	4-12803500	Nozzle, SAQCMEG, 0003.5 (Red)	1
2	4-12803515	Nozzle, SAQCMEG, 1503.5 (Yellow)	1
3	4-12803525	Nozzle, SAQCMEG, 2503.5 (Green)	1
4	4-12803540	Nozzle, SAQCMEG, 4003.5 (White)	1
5	2-2000	Coupler, 1/4" Female	1
	2-0119	▲ O-Ring, Quick Coupler, 1/4"	1
6	4-011034	Lance, 48" x 1/4"	1
	2-011735	▲ Grip, Wand Side Handle (Replacement)	1
7	2-2005	Nipple, 1/4" x 1/4" NPT ST Male	1
8	4-01242	Gun, Shut-off, Hawk, Grey	1
9	2-2002	Coupler, 3/8" Female	1
	2-0121	▲ O-Ring, Quick Coupler, 3/8"	1

▲ Not Shown

## PUMP ASSEMBLY VIEW AND PARTS LIST

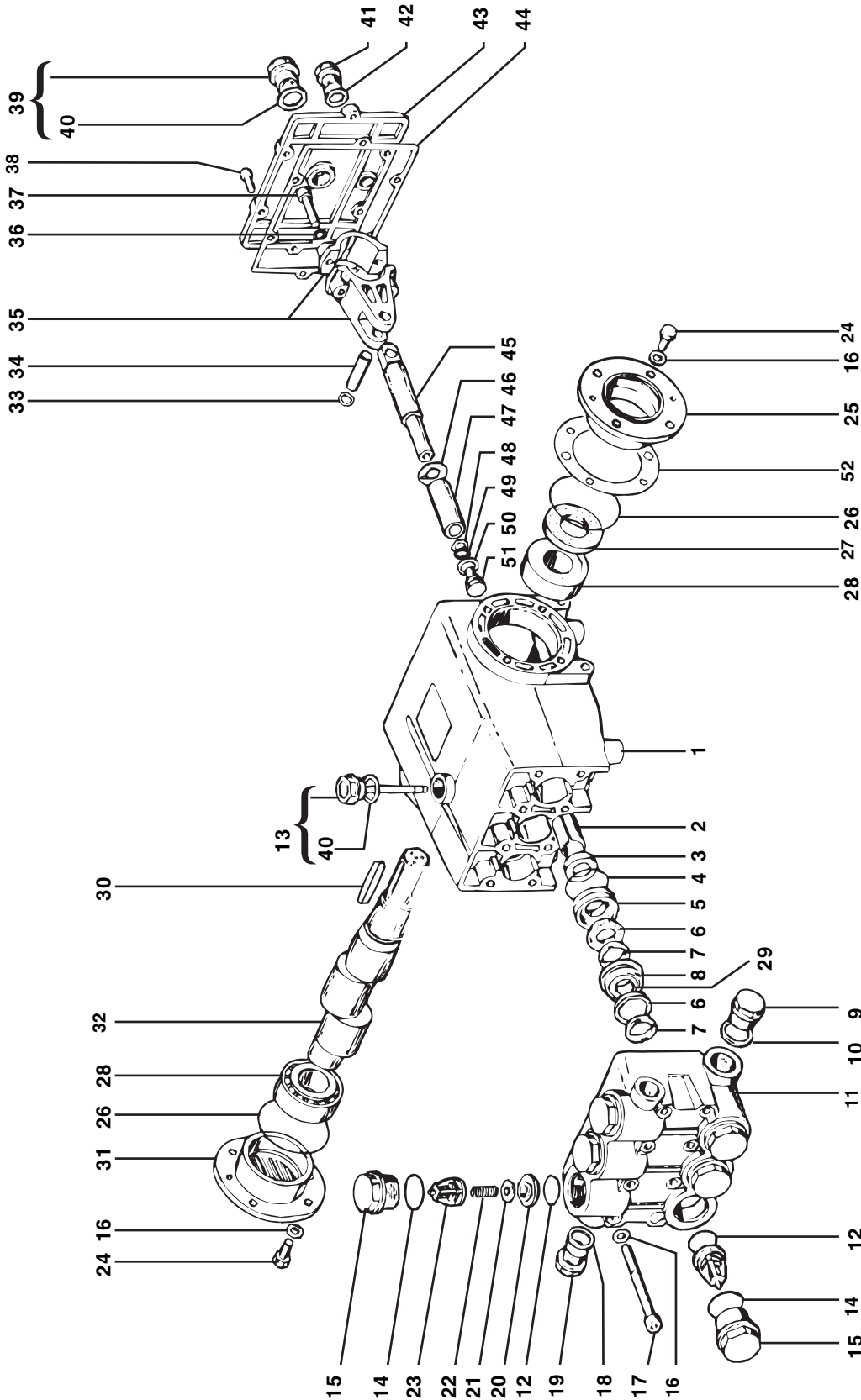


ITEM	PART NO.	DESCRIPTION	QTY.
1	5-1808	Pump, Hawk, HC930R	1
2	4-02047825	Hose 3/8" x 22", 2 Wire, 3/8" Male Swivel x 3/8" Female	1
3	2-1086	Hose Barb, 1/4" Barb x 3/8" ML Pipe	1
4	4-02100000	Hose 1/4", Push-on, Per Ft.	1.25 ft
5	5-3310	Unloader, XSM 4500 WP	1
6	2-20061	Nipple, 3/8" x 3/8", SS, NPT ST, Female	1
7	2-0031	Elbow 3/8", Street	1
8	2-0045	Tee 3/8", Street	1
9	2-1084	Hose Barb, 1/4" Barb x 1/8" ML Pipe	1
10	2-9040	Clamp, Hose, UNI	2
11	2-30089	Valve, Relief, Start, 5000 WP	1

ITEM	PART NO.	DESCRIPTION	QTY.
12	2-10862	Hose Barb, 3/8" Barb x 3/8" ML Pipe	1
13	4-02120003	Hose, 3/8" Push-on	0.375 ft
14	2-0046	Tee, 1/2", Street	1
15	2-10942	Swivel, 1/2" MP x 3/4" GHF w/ Strainer	1
16	2-30088	Valve, Relief, Open, 5000 WP	1
17	5-512025	Bushing, H x 25 mm	1
18	5-40509001	Pulley, 2BK90 H	1
19	2-30082	Pump Protector, 1/2" PTP	1
20	5-512025	Bushing, H x 25mm	1
21	5-40509001	Pulley, 2BK90H	1

▲ Not Shown

**PUMP EXPLODED VIEW**



## **PUMP EXPLODED VIEW** **PARTS LIST**

ITEM	PART NO.	DESCRIPTION	QTY.	ITEM	PART NO.	DESCRIPTION	QTY.
1	636930	Crankcase	1	26	926649	Bearing Housing O-Ring	2
2	860360	Plunger Guide	3	27	926651	Crankshaft Seal	2
3		Plunger Seal	3	28	808401	Roller Bearing	2
	877653	▲ Plunger Seal Kit	1	29		Teflon Ring 20 mm	3
4		Pressure Ring O-Ring	3	30	753100	Crankshaft Key 8 x 7 x 50 mm	1
5		Pressure Ring 20 mm	3	31	615374	Closed Bearing Housing	1
6		V-Sleeve 20 mm	6	32	630930	Single-Ended Crankshaft	1
7		Support Ring 20 mm	6	33	926691	Connecting Rod Pin Snap Ring	6
8		Intermediate Ring 20 mm	3	34	914138	Connecting Rod Pin	3
	877649	▲ Seal Packing Kit 20 mm	1	35	928640	Connecting Rod Assembly	3
	877646	▲ Complete Seal Packing Kit 20 mm	3	36	936933	Spring Washer	6
9	915630	Plug 3/8"	1	37	735311	Allen Screw	6
10	780565	Copper Washer 3/8"	1	38	735313	Crankcase Cover Allen Screw	6
11	784930	Manifold Housing	1	39	858430	Sight Glass 1/2"	1
12		Valve Seat O-Ring	6	40	855892	Gasket 1/2"	2
13	835280	Oil Dipstick	1	41	915630	Plug 3/8"	1
14		Manifold Plug O-Ring	6	42	855893	Gasket 3/8"	1
15	829939	Manifold Plug	6	43	826680	Crankcase Cover	1
16	936931	Lock Washer	8	44	855890	Crankcase Cover Gasket	1
	780560	Washer	8	45	829931	Plunger Rod	3
17	875937	Manifold Stud Bolt	8	46		Copper Spacer	3
18	936932	Copper Washer 1/2"	1	47		Plunger Sleeve 20 mm	3
19	915634	Plug 1/2"	1	48		Teflon Ring	3
20		Valve Seat	6	49		Plunger Bolt O-Ring	3
21		Valve Plate	6	50		Copper Spacer	3
22		Valve Spring	6	51		Plunger Assembly Bolt	3
23		Valve Cage	6		877651	▲ Ceramic Sleeve Kit 20 mm	3
	753110	▲ Valve Assembly Kit	6	52	944784	Shim	2
24	735314	Hex Screw	8			▲ Not Shown	
25	867750	Bearing Housing	1				

## TROUBLESHOOTING

PROBLEM	POSSIBLE CAUSE	SOLUTION
<b>GAS ENGINE WILL NOT RUN</b>	Out of gas	Replenish supply. Use only recommended fuels. Refer to Operation Section.
	Fuel valve closed (if so equipped)	Open valve.
	Loose spark plug wire	Reconnect.
	Choke or throttle set incorrectly	Refer to Operation Section.
	Low engine oil level	Replenish supply. Engine will not start or run if oil is low (on engines equipped with low oil protection).
	Engine ON/OFF switch in OFF position	Place engine ON/OFF switch in ON position.
	<b>Refer to provided gasoline engine manual for additional troubleshooting.</b>	
<b>PRESSURE WASHER RUNS BUT WON'T SPRAY</b>	Trigger of trigger gun released	Squeeze trigger.
	Water supply not turned on	Open water supply valve.
	Clogged pressure nozzle	Clean pressure nozzle opening.
<b>LOW SPRAY PRESSURE AT PRESSURE NOZZLE</b>	Inadequate water supply	Fully open faucet. Check for kinked or damaged hose. Use 5/8 inch minimum hose. Check for debris clogging inlet screen.
	Partially clogged or damaged pressure nozzle	Clean or replace.
	Air being drawn through detergent inlet line	Refill detergent container. Ensure that pickup screen is fully immersed.
	Engine throttle not in full throttle position	Place engine throttle in full throttle position.
<b>UNEVEN SPRAY PATTERN</b>	Partially clogged or damaged pressure nozzle	Clean or replace.



## PREVENTATIVE MAINTENANCE

This B4030H machine was produced with the best available materials and quality craftsmanship. However, you as the owner have certain responsibilities for the correct care of the equipment. Attention to regular preventative maintenance procedures will assist in preserving the performance of your equipment. Contact your Shark Pressure Washers dealer for maintenance. Regular preventative maintenance will add many hours to the life of your pressure washer. Perform maintenance more often under severe conditions.

MAINTENANCE SCHEDULE		
Engine Oil	Inspect	Every 8 hours or daily
	Change	Every 50 hours or monthly
Air Cleaner/Filter	Inspect	Every 8 hours or daily
	Change	Every 50 hours or monthly
Fuel Tank Filter		Every 100 hours or yearly
Spark Plug Maintenance		Every 100 hours or yearly
Check Valve Clearance		Yearly
Water Filter	Check	Every 8 hours or daily
	Clean	Yearly
Pump Oil	Inspect	Every 25 hours or weekly
	Change	Yearly

## OIL CHANGE RECORD

Check pump oil and engine oil level before first use of your new pressure washer.

Date Oil Changed Month/Day/Year	Estimated Operating Hours Since Last Oil Change

Date Oil Changed Month/Day/Year	Estimated Operating Hours Since Last Oil Change





# B4030H PRESSURE WASHER WARRANTY

## SHARK LIMITED NEW PRODUCT WARRANTY PRESSURE WASHERS

### WHAT THIS WARRANTY COVERS

All SHARK PRESSURE WASHERS are warranted by SHARK to the original purchaser to be free from defects in materials and workmanship under normal use, for the periods specified below. This Limited Warranty is subject to the exclusions shown below, is calculated from the date of the original purchase, and applies to the original components only. Any parts replaced under this warranty will assume the remainder of the part's warranty period. This warranty applies to the original purchaser and is not transferable.

### LIMITED LIFETIME PARTS WARRANTY:

Components manufactured by SHARK, such as frames, handles, coil wraps, float tanks, and belt guards. All heating coils will have a one year warranty. Internal components on the oil-end of all pressure washer pumps will have a seven year warranty.

### ONE YEAR PARTS WARRANTY:

All other components, excluding normal wear items as described below, will be warranted for one year on parts. Warranty on these parts will be for one year regardless of the duration of the original component manufacturer's part warranty.

### WARRANTY PROVIDED BY OTHER MANUFACTURERS:

Motors, generators, and engines, which are warranted by their respective manufacturers, are serviced through these manufacturers' local authorized service centers. SHARK cannot provide warranty on these items.

### WHAT THIS WARRANTY DOES NOT COVER

This warranty does not cover the following items:

1. Normal wear items, such as nozzles, guns, discharge hoses, wands, quick couplers, seals, filters, gaskets, O-rings, packings, pistons, pump valve assemblies, strainers, belts, brushes, rupture disks, fuses, pump protectors.
2. Damage or malfunctions resulting from accidents, abuse, modifications, alterations, incorrect installation, improper servicing, failure to follow manufacturer's maintenance instructions, or use of the equipment beyond its stated usage specifications as contained in the operator's manual.
3. Damage due to freezing, chemical deterioration, scale buildup, rust, corrosion, or thermal expansion.
4. Damage to components from fluctuations in electrical or water supply.
5. Normal maintenance service, including adjustments, fuel system cleaning, and clearing of obstructions.
6. Transportation to service center, shop labor charges, field labor charges, or freight damage.

### WHAT YOU MUST DO TO OBTAIN WARRANTY SERVICE

While not required for warranty service, we request that you register your SHARK pressure washer by returning the completed registration card. In order to obtain warranty service on items, you must return the product to an Authorized SHARK Dealer, freight prepaid, with proof of purchase, within the applicable warranty period. If the product is permanently installed, you must notify your Authorized SHARK Dealer of the defect. The Authorized Dealer will file a claim, which must subsequently verify the defect. In most cases, the part must be returned to SHARK freight prepaid with the claim. For warranty service on components warranted by other manufacturers, the Authorized Dealer can help you obtain warranty service through these manufacturers' local authorized service centers. If you are unable to resolve the warranty claim satisfactorily, write to SHARK at 4275 N.W. Pacific Rim Blvd., Camas, WA 98607, ATTN: Warranty Dept., detailing the nature of the defect, the name of the Authorized Dealer, and a copy of the purchase invoice.

### LIMITATION OF LIABILITY

SHARK'S liability for special, incidental, or consequential damages is expressly disclaimed. In no event shall SHARK'S liability exceed the purchase price of the product in question. SHARK makes every effort to ensure that all illustrations and specifications are correct, however, these do not imply a warranty that the product is merchantable or fit for a particular purpose, or that the product will actually conform to the illustrations and specifications. **THE WARRANTY CONTAINED HEREIN IS IN LIEU OF ALL OTHER WARRANTIES, EXPRESS OR IMPLIED, INCLUDING ANY IMPLIED WARRANTY OF FITNESS FOR A PARTICULAR PURPOSE.** SHARK does not authorize any other party, including authorized Dealers, to make any representation or promise on behalf of SHARK, or to modify the terms, conditions, or limitations in any way. It is the buyer's responsibility to ensure that the installation and use of SHARK products conforms to local codes. While SHARK attempts to assure that its products meet national codes, it cannot be responsible for how the customer chooses to use or install the product.

### SHARK PRESSURE WASHERS

4275 N.W. Pacific Rim Blvd. • Camas, WA 98607 • USA • 1-800-771-1881



4275 N.W. Pacific Rim Blvd. • Camas, WA 98607 • 1-800-771-1881

Form #97-6136 • Revised 12/02 • Printed in U.S.A.