



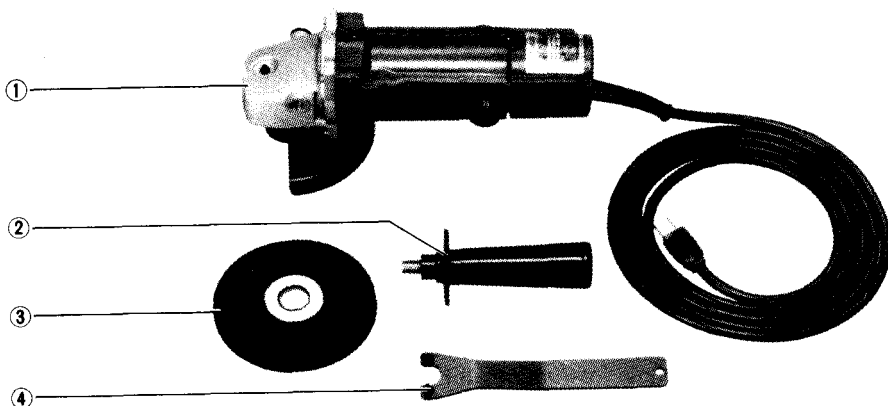
Makita Disc Grinder

125 mm (5") MODEL GA5000

アメリカ

INSTRUCTION MANUAL

Disc Grinder & Standard Equipment



- ① Tool body
- ② Grip
- ③ Depressed center wheel
- ④ Lock nut wrench



Specifications

Continuous rating (Input)	No load speed	Overall length	Net weight	Power supply cord	Spindle thread
850 W	10,000 R/min.	278 mm (11")	2.5 kg (5.5 lbs)	2.5 m (8.2 ft.)	5/8-11UNC

- Manufacturer reserves the right to change specifications of parts and accessories without notice.
- Note: Specifications of parts and accessories may vary from country to country.

IMPORTANT SAFETY INSTRUCTIONS

WARNING: When using electric tools, basic safety precautions should always be followed to reduce the risk of fire, electric shock, and personal injury, including the following:

READ ALL INSTRUCTIONS.

1. **KEEP WORK AREA CLEAN.** Cluttered areas and benches invite injuries.
2. **CONSIDER WORK AREA ENVIRONMENT.** Don't use power tools in damp or wet locations. Keep work area well lit. Don't expose power tools to rain. Don't use tool in presence of flammable liquids or gases.
3. **KEEP CHILDREN AWAY.** All visitors should be kept away from work area. Don't let visitors contact tool or extension cord.
4. **STORE IDLE TOOLS.** When not in use, tools should be stored in dry, and high or locked-up place – out of reach of children.
5. **DON'T FORCE TOOL.** It will do the job better and safer at the rate for which it was intended.
6. **USE RIGHT TOOL.** Don't force small tool or attachment to do the job of a heavy-duty tool. Don't use tool for purpose not intended.
7. **DRESS PROPERLY.** Don't wear loose clothing or jewelry. They can be caught in moving parts. Rubber gloves and non-skid footwear are recommended when working outdoors. Wear protective hair covering to contain long hair.
8. **USE SAFETY GLASSES.** Also use face or dust mask if cutting operation is dusty.
9. **DON'T ABUSE CORD.** Never carry tool by cord or yank it to disconnect from receptacle. Keep cord from heat, oil, and sharp edges.
10. **SECURE WORK.** Use clamps or a vise to hold work. It's safer than using your hand and it frees both hands to operate tool.
11. **DON'T OVERREACH.** Keep proper footing and balance at all times.
12. **MAINTAIN TOOLS WITH CARE.** Keep tools sharp and clean for better and safer performance. Follow instructions for lubricating and charging accessories. Inspect tool cords periodically and if damaged, have repaired by authorized service facility. Keep handles dry, clean, and free from oil and grease.
13. **DISCONNECT TOOLS.** When not in use, before servicing, and when changing accessories, such as blades, bits, cutters.
14. **REMOVE ADJUSTING KEYS AND WRENCHES.** Form habit of checking to see that keys and adjusting wrenches are removed from tool before turning it on.
15. **AVOID UNINTENTIONAL STARTING.** Don't carry plugged-in tool with finger on switch. Be sure switch is OFF when plugging in.
16. **OUTDOOR USE EXTENSION CORDS.** When tool is used outdoors, use only extension cords intended for use outdoors and so marked.
17. **STAY ALERT.** Watch what you are doing, use common sense. Don't operate tool when you are tired.
18. **CHECK DAMAGED PARTS.** Before further use of the tool, a guard or other part that is damaged should be carefully checked to determine that it will operate properly and perform its intended function. Check for alignment of moving parts, binding of moving parts, breakage of parts, mounting, and other conditions that may affect its operation. A guard or other part that is damaged should be properly repaired or

replaced by an authorized service center unless otherwise indicated elsewhere in this instruction manual. Have defective switches replaced by authorized service center. Don't use tool if switch does not turn it on and off.

- 19. Keep guards in place.
- 20. Use only grinding wheels having a maximum operating speed at least as high as "No Load RPM" marked on the tool's nameplate.
- 21. **GUARD AGAINST ELECTRIC SHOCK.** Prevent body contact with grounded surfaces. For example; pipes, radiators, ranges, refrigerator enclosures.
- 22. **REPLACEMENT PARTS.** When servicing, use only identical replacement parts.

SAVE THESE INSTRUCTIONS.

VOLTAGE WARNING: Before connecting the tool to a power source (receptacle, outlet, etc.) be sure the voltage supplied is the same as that specified on the nameplate of the tool. A power source with voltage greater than that specified for the tool can result in **SERIOUS INJURY** to the user — as well as damage to the tool. If in doubt, **DO NOT PLUG IN THE TOOL.** Using a power source with voltage less than the nameplate rating is harmful to the motor.

How to use

Switch action

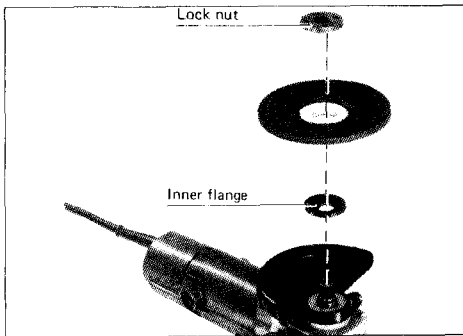
There is a slide switch on the motor housing. Slide the button in the ON or OFF direction as desired.

Push forward to start, the button will lock in the "ON" position. To stop, press down on back of the button.

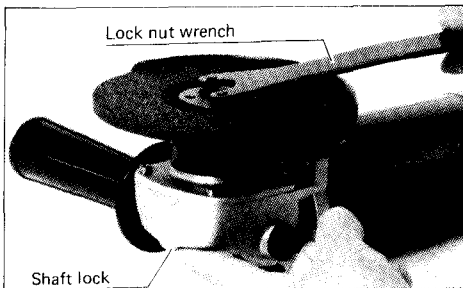
Installing the depressed center wheel

Unplug the tool from the power source and perform the following steps:

- 1. Place the inner flange on the spindle.
- 2. Fit the depressed center wheel over the flange.
- 3. Screw the lock nut onto the spindle.

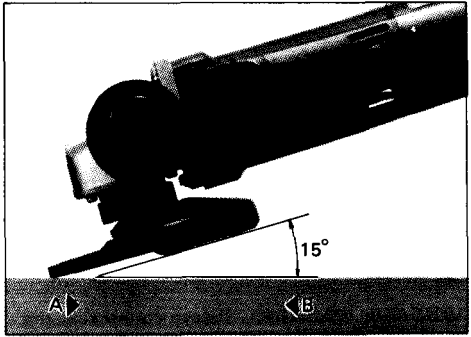


- 4. To tighten the wheel lock nut, lock the shaft in place by depressing with your index finger the pin on the lower front of the tool so that it cannot rotate, then use the lock nut wrench and tighten firmly in clockwise direction.



Operation

- In general, keep the edge of the depressed center wheel at an angle of about 15° in relation to the workpiece surface.
- During the break-in period with a new grinding wheel, do not work the grinder in the B direction or it will cut into the material. Once the edge of the wheel has been rounded off by use, the wheel may be worked in both A and B directions.



- Check for cracks in the depressed center wheel and for loose or missing screws.
- Always use the guard. It can prevent an accident if a wheel should ever break.
- Choose a wheel grit in terms of the workpiece material.
- Before using the disc grinder on an actual workpiece, let it simply run for several minutes first. Watch for flutter that might be caused by poor installation or a poorly balanced wheel.
- Bring the depressed center wheel into gentle contact with the work surface. Do not bear down as this will slow the wheel revolution, make for a poor finish, and the load on the motor will cause undue wear.

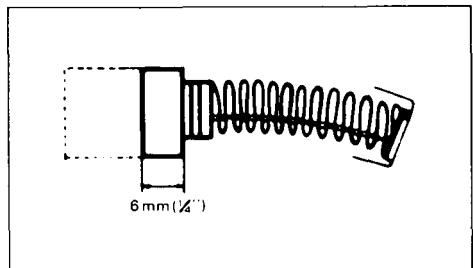
Grip

The grip can be installed on either side of the tool, whichever is convenient. (Change the cap screw on the right side to the left, if using the grip on the right side).

Maintenance

Carbon brushes

Replace carbon brushes when they wear down to about 6 mm ($1/4''$) or sparking will occur. Both brushes should be changed at the same time.



Optional accessories

CAUTION: The use of any other accessories not specified in this manual might be hazardous.

• Depressed center wheels



Size (mm)	Grit	Part No.	Wheels per pkg
125 x 6 x 22 (5") x (1/4") x (7/8")	24	741407-8	1

• Lock nut (For abrasive disc)



Size	Part No.	Spindle thread
5/8-48	224517-1	5/8"

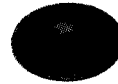
• Abrasive discs (10 per pkg)

Dia. 125 mm (5")

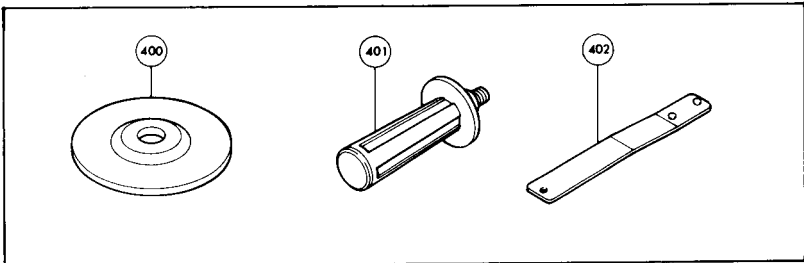
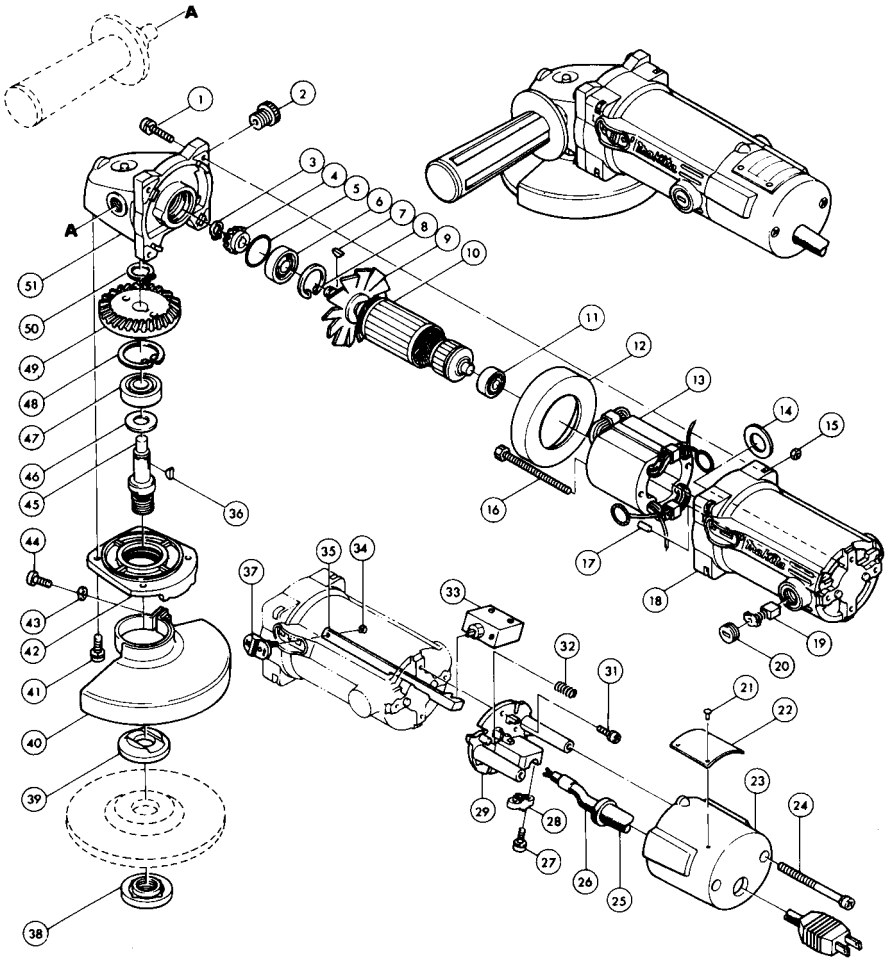


Grit	Part No.
24	742072-6
30	742073-4
50	742074-2
80	742075-0
120	742076-8

• Rubber pad



Size	Part No.
115	743015-1



ITEM NO.	NO. USED	DESCRIPTION	ITEM NO.	NO. USED	DESCRIPTION
<u>MACHINE</u>			<u>MACHINE</u>		
1	4	P. H. Screw M4x25 (With Washer)	31	2	P. H. Screw M4x14 (With Washer)
2	1	Cap Screw M12x12	32	1	Compression Spring 6
3	1	Retaining Ring S-8	33	1	Double Pole Switch
4	1	Spiral Bevel Gear 13	34	1	Stop Ring E-2.3
5	1	O Ring 26	35	1	Switch Rod
6	1	Ball Bearing 6000LB	36	1	Woodruff Key 3
7	1	Woodruff Key 3	37	1	Switch Lever
8	1	Retaining Ring R-26	38	1	Lock Nut
9	1	Fan 70	39	1	Inner Flange
10	1	ARMATURE ASSEMBLY (Assembled Items 9 - 11)	40	1	Wheel Cover
11	1	Ball Bearing 608LB	41	4	P. H. Screw M4x16 (With Washer)
12	1	Plate	42	1	Bearing Box
13	1	FIELD ASSEMBLY (With Garter Spring x 2)	43	1	S. Washer 5
14	2	Insulation Washer	44	1	P. H. Screw M5x16
15	4	H. Nut M4	45	1	Spindle
16	2	H. Bolt M4x70 (With Washer)	46	1	F. Washer 12
17	1	Rubber Pin 4	47	1	Ball Bearing 6201LB
18	1	Motor Housing (With Brush Holder x 2)	48	1	Retaining Ring R-32
19	2	Carbon Brush	49	1	Spiral Bevel Gear 40
20	2	Brush Holder Cap	50	1	Retaining Ring S-12
21	4	Rivet 0-5	51	1	Gear Housing
22	1	Name Plate	<u>ACCESSORIES</u>		
23	1	Rear Cover	400	1	Depressed Center Wheel 125-24
24	2	P. H. Screw M5x70 (With Washer)	401	1	Grip 37
25	1	Cord Guard	402	1	Lock Nut Wrench
26	1	CORD ASSEMBLY (Assembled Cord, Plug & Cord Guard)			
27	2	P. H. Screw M4x14 (With Washer)			
28	1	Strain Relief			
29	1	Switch Holder			

マキタ

MAKITA LIMITED ONE YEAR WARRANTY

Warranty Policy

Every Makita tool is thoroughly inspected and tested before leaving the factory. It is warranted to be free of defects from workmanship and materials for the period of ONE YEAR from the date of original purchase. Should any trouble develop during this one-year period, return the COMPLETE tool, freight prepaid, to one of Makita's Factory or Authorized Service Centers. If inspection shows the trouble is caused by defective workmanship or material, Makita will repair (or at our option, replace) without charge.

This Warranty does not apply where:

- repairs have been made or attempted by others;
- there is evidence of normal wear and tear;
- The tool has been abused, misused or improperly maintained ;
- alterations have been made to the tool.

IN NO EVENT SHALL MAKITA BE LIABLE FOR ANY INDIRECT, INCIDENTAL OR CONSEQUENTIAL DAMAGES FROM THE SALE OR USE OF THE PRODUCT. THIS DISCLAIMER APPLIES BOTH DURING AND AFTER THE TERM OF THIS WARRANTY.

MAKITA DISCLAIMS LIABILITY FOR ANY IMPLIED WARRANTIES, INCLUDING IMPLIED WARRANTIES OF "MERCHANTABILITY" AND "FITNESS FOR A SPECIFIC PURPOSE," AFTER THE ONE-YEAR TERM OF THIS WARRANTY.

This Warranty gives you specific legal rights, and you may also have other rights which vary from state to state. Some states do not allow the exclusion or limitation of incidental or consequential damages, so the above limitation or exclusion may not apply to you. Some states do not allow limitation on how long an implied warranty lasts, so the above limitation may not apply to you.



Makita Electric Works, Ltd.

11-8, 3-chome, Sumiyoshi-cho, Anjo, Aichi 446, Japan

883306-061

PRINTED IN JAPAN
1982-12-N