



**WF-2117/WF-2118 Wireless N PCI  
Adapter  
Quick Installation Guide**

## **FCC Statement**

This equipment has been tested and found to comply with the limits for a Class B digital device, pursuant to part 15 of the FCC rules. These limits are designed to provide reasonable protection against harmful interference in a residential installation. This equipment generates, uses and can radiate radio frequency energy and, if not installed and used in accordance with the instructions, may cause harmful interference to radio communications. However, there is no guarantee that interference will not occur in a particular installation. If this equipment does cause harmful interference to radio or television reception, which can be determined by turning the equipment off and on, the user is encouraged to try to correct the interference by one or more of the following measures:

- Reorient or relocate the receiving antenna.
- Increase the separation between the equipment and receiver.
- Connect the equipment into an outlet on a circuit different from that to which the receiver is connected.
- Consult the dealer or an experienced radio/TV technician for help.

To assure continued compliance, any changes or modifications not expressly approved by the party responsible for compliance could void the user's authority to operate this equipment. (Example- use only shielded interface cables when connecting to computer or peripheral devices)

## **FCC Radiation Exposure Statement**

This equipment complies with FCC RF radiation exposure limits set forth for an uncontrolled environment. This transmitter must not be co-located or operating in conjunction with any other antenna or transmitter.

This equipment complies with Part 15 of the FCC Rules. Operation is subject to the following two conditions:

- (1) This device may not cause harmful interference, and
- (2) This device must accept any interference received, including interference that may cause undesired operation.

## **Caution!**

The manufacturer is not responsible for any radio or TV interference caused by unauthorized

modifications to this equipment. Such modifications could void the user authority to operate the equipment

## 1 Package Contents

**The following items should be found in your package:**

- Ø Wireless-N PCI Adapter
- Ø CD-ROM
- Ø Quick Installation Guides

Make sure that the package contains above items. If any of the listed items is damaged or missing, please contact with your distributor.

## 2 Product Overview

Wireless-N PCI Adapter is a powerful 32-bit PCI Adapter that installs quickly and easily into PCs. The Adapter can be used in Ad-Hoc mode to connect directly with other cards for peer-to-peer file sharing or in Infrastructure mode to connect with a wireless access point or router for access to the Internet in your office or home network.

Wireless-N PCI Adapter connects with 802.11n networks at up to an incredible 150Mbps! And for added versatility, it can also interoperate with all the up to 54Mbps 802.11g or 11Mbps 802.11b products found in homes, businesses, and public wireless hotspots around the country. And in every mode, your wireless communications are protected, so your data stays secure.

## 3 System Requirement

You must have the following at least

- Ø A desktop computer with an available 32-bit PCI slot.
- Ø At least a 300 MHz processor and 32 MB of memory
- Ø An 802.11b/g/n Access Point (for Infrastructure Mode) or another 802.11b/g/n wireless adapter (for Ad-Hoc, Peer-to-Peer networking mode.)

## 4 Driver and Hardware Installation

### 4.1 Driver installation of the Wireless-N PCI Adapter

Turn on the computer and Insert the Wireless-N PCI Adapter Driver CD in the CD-ROM drive. The Install Screen will appear. If not, click the Start button and choose Run and enter D:\autorun.exe (if 'D' is the letter of your CD-ROM drive)

Select Drivers, choose the modem of your product and operate according to the instruction. The following is the step-by-step instructions in Windows XP. The steps and screens are similar for the other Windows operating systems

- Ø Select “I accept the terms of the license agreement” and then click Next

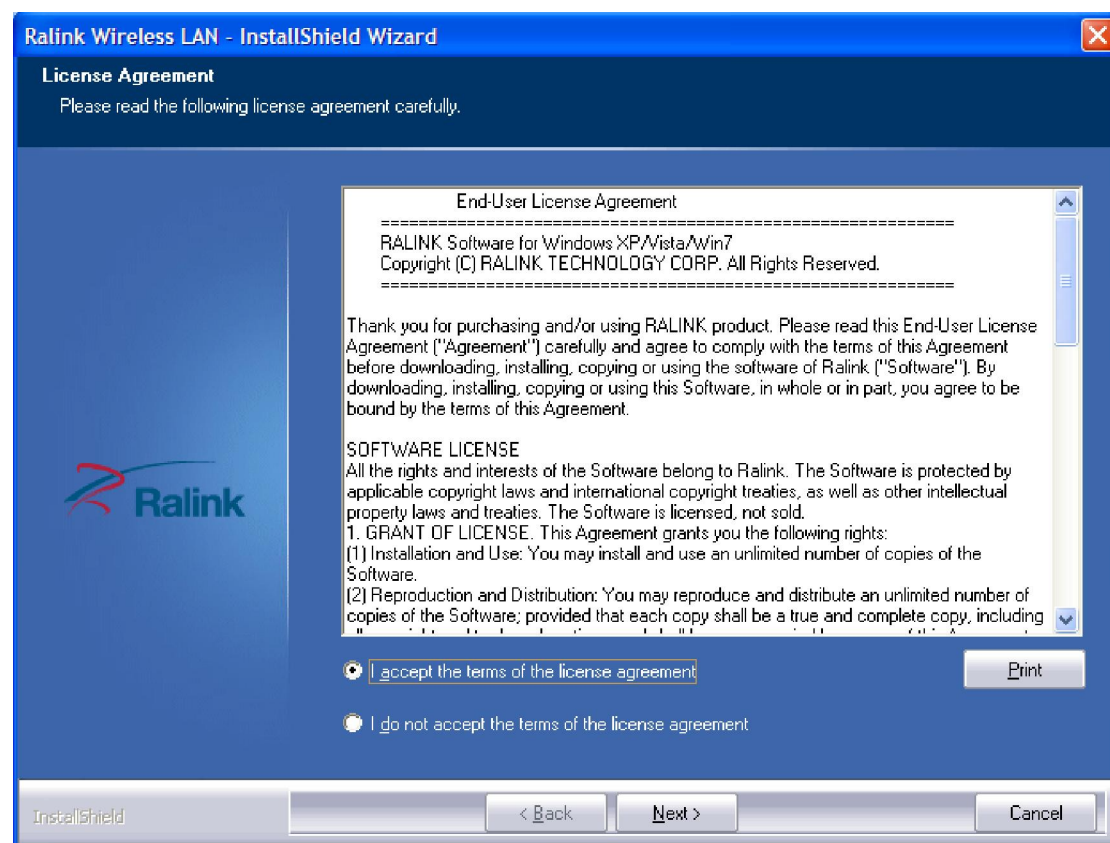


Figure 4-1

- Ø Select “Install driver and Ralink WLAN Utility” and Click Next

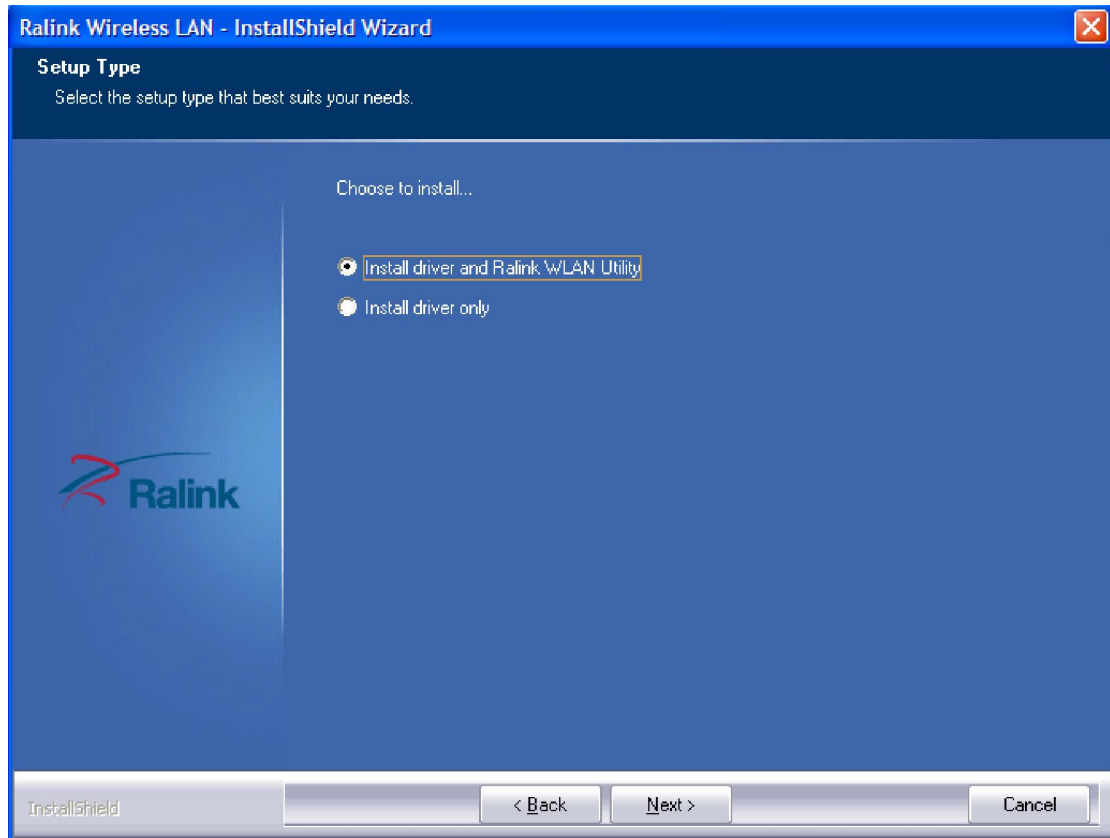


Figure 4-2

- Ø Select “Ralink Configuration Tool” and Click Install

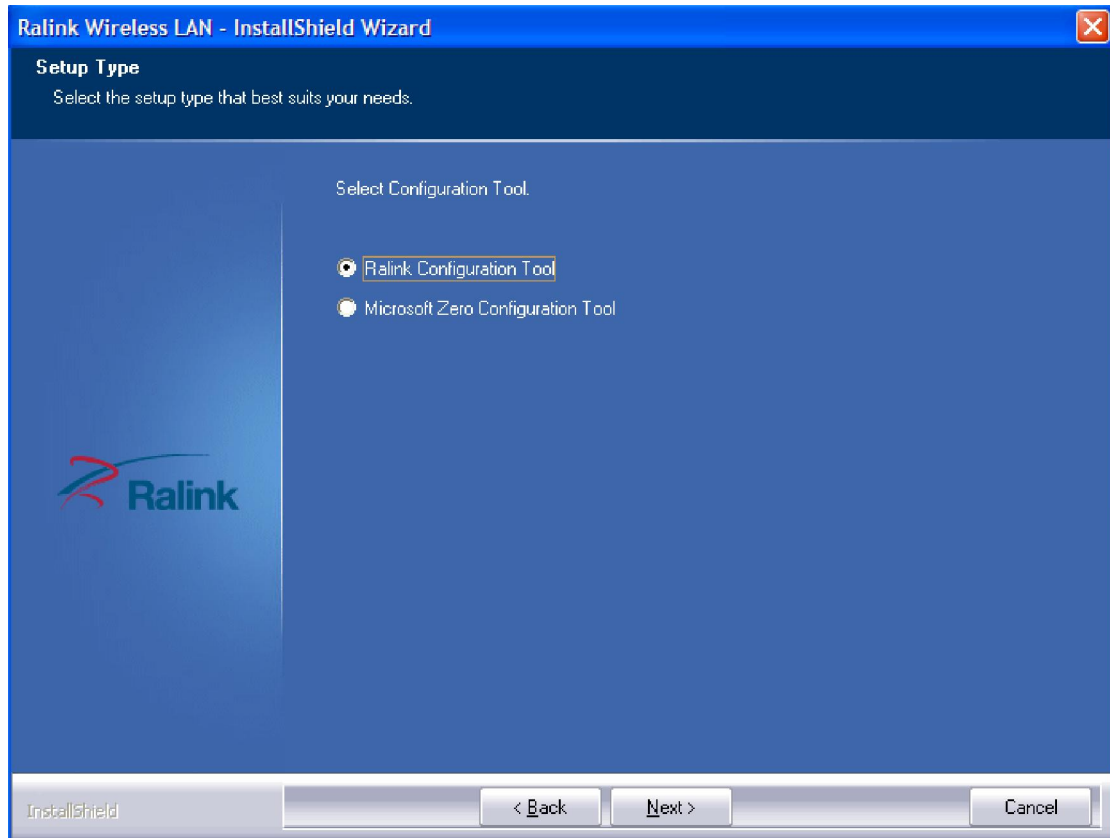


Figure 4-3

Ø Click Install

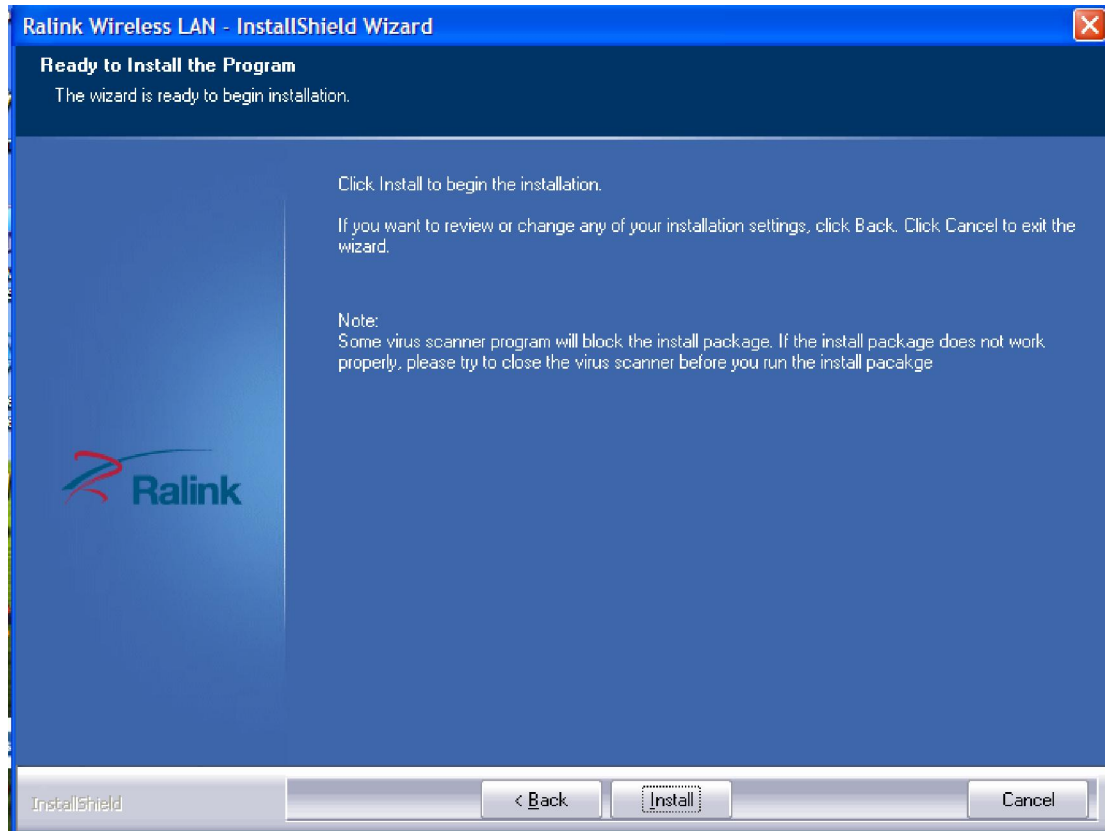


Figure 4-4

- Ø Click Finish to finish the driver installation

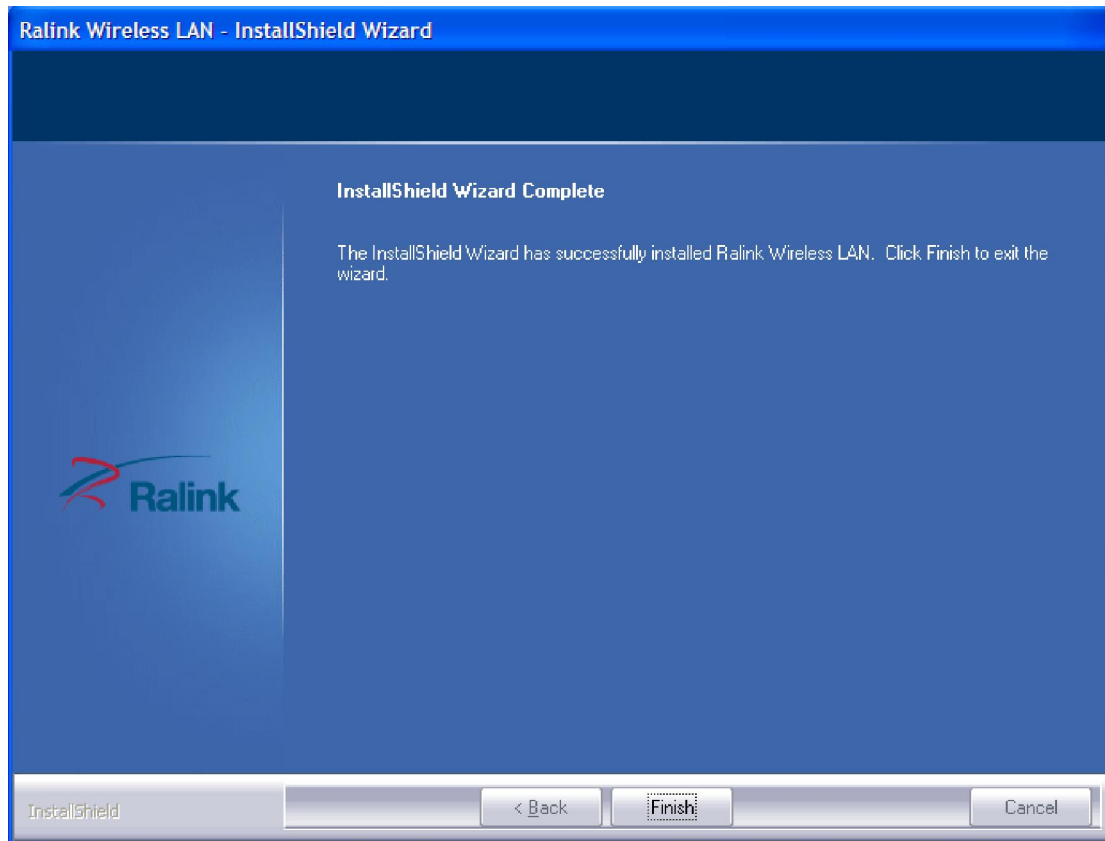


Figure 4-5

## 4.2 Hardware installation of the Wireless PCI Adapter

### 4.2.1 Install the Wireless-N PCI adapter into your computer

- Ø Make sure to turn off your computer and unplug the power cord. Remove the back cover of the computer.
- Ø Install the Wireless-N PCI Adapter carefully and firmly seat it into an available PCI slot (to avoid damage caused by static electricity, make sure to properly ground yourself by first touching a metal part of your computer to discharge any static electricity before working with the Wireless-N PCI Adapter).
- Ø Secure the Wireless-N PCI Adapter back panel shield with a screw.
- Ø Replace the computer's cover.
- Ø Place the computer back in its normal position.



- Ø Attach the Wireless-N PCI Adapter's antenna to the socket on the back panel shield.

## 4.2.2 Restart your computer

Turn on the computer, the Found New Hardware Wizard (windows XP) screen will appear:

- Ø Select Install the software automatically (Recommended) and then click Next



Figure 4-6

- Ø Click Finish to finish the hardware installation



Figure 4-7

The installation is completed

## 5 Connecting to a wireless network

Use the Ralink WLAN Utility to check the link information, search for available wireless networks, or create profiles that hold different configuration settings. You can double-click the icon on your desktop to run it. Another way to start the Configuration Utility is to click Start> All Programs> Ralink Wireless> Ralink Wireless Utility.

You can use the following method to connect to a wireless network

- Ø Double click the icon on the desk-top
- Ø Select Available Network tab and click Refresh button to refresh current available wireless network, you can double click it after highlighting a wireless network you want to connect

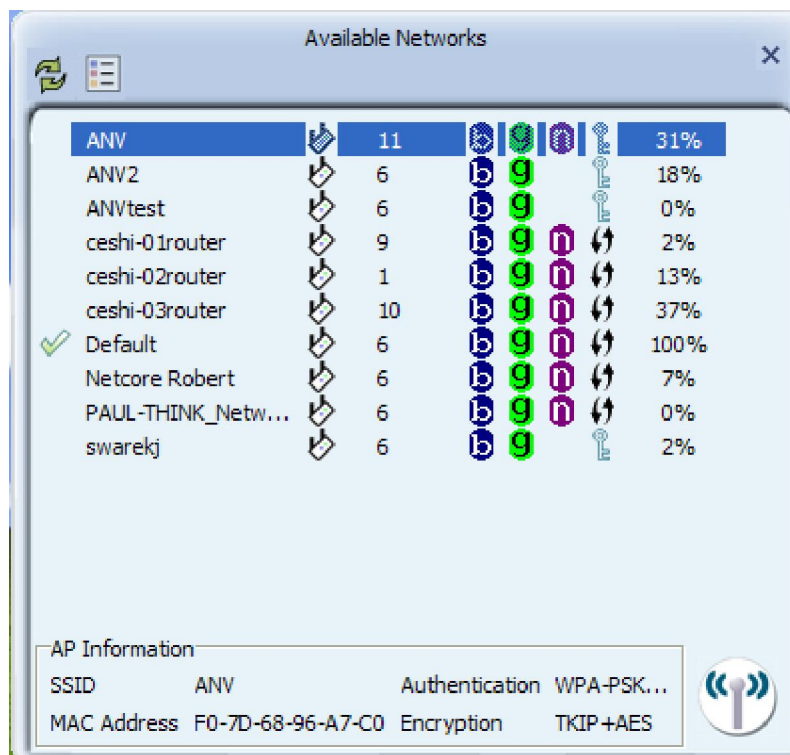


Figure 5-1

- Ø The wireless network properties are as follows. If it is encrypted, you need to enter Network Key and confirm if and then click OK.

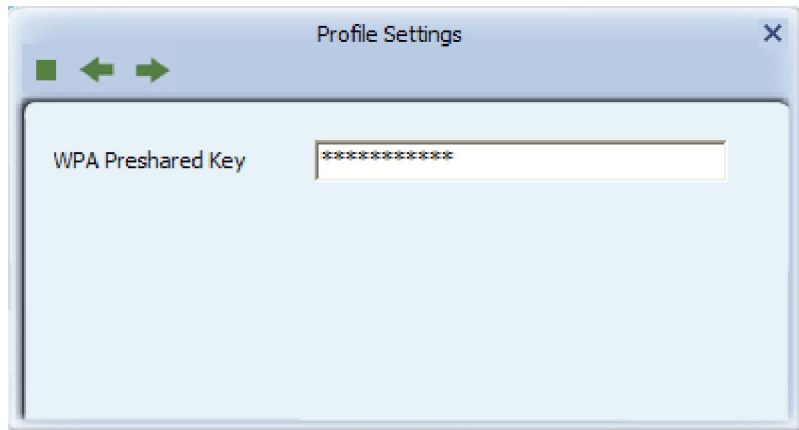


Figure 5-2

Now you have finished the configuration.

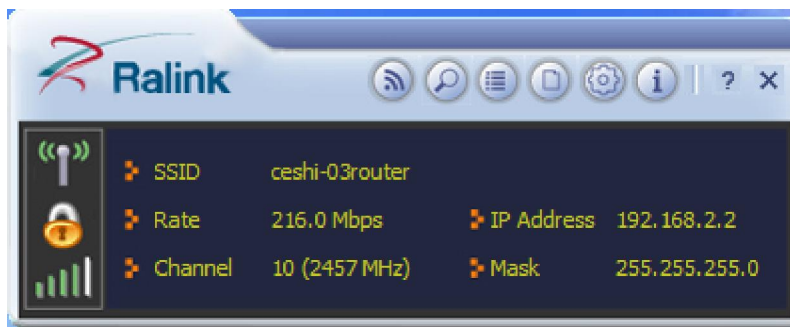


Figure 5-4

## 6 FAQ

This chapter provides solutions to problems that may occur during the installation and operation of the Wireless USB Adapter. Read the descriptions below to solve your problems.

### 1. I cannot communicate with the other computers linked via Ethernet in the Infrastructure configuration.

Make sure that the PC to which the Adapter is associated is powered on.

Make sure that your Adapter is configured on the same channel and with the same security options as with the other computers in the Infrastructure configuration.

### 2. What should I do when the computer with the Adapter installed is unable to connect to the wireless network and/or the Internet?

Check that the LED indicators for the broadband modem are indicating normal activity. If not, there may be a problem with the broadband connection.

Check that the LED indicators on the wireless router are functioning properly. If not, check

that the AC power and Ethernet cables are firmly connected.

Check that the IP address, subnet mask, gateway, and DNS settings are correctly entered for the network.

In Infrastructure mode, make sure the same Service Set Identifier (SSID) is specified on the settings for the wireless clients and access points.

In Ad-Hoc mode, both wireless clients will need to have the same SSID. Please note that it might be necessary to set up one client to establish a BSS (Basic Service Set) and wait briefly before setting up other clients. This prevents several clients from trying to establish a BSS at the same time, which can result in multiple singular BSSs being established, rather than a single BSS with multiple clients associated to it.

Check that the Network Connection for the wireless client is configured properly.

If Security is enabled, make sure that the correct encryption keys are entered on both the Adapter and the access point.