



Printer/Scanner Unit Type 2027

Operating Instructions Printer Reference 2



-
- 1** Setting Up the Printer Driver and Canceling a Print Job
 - 2** Using the Document Server
 - 3** Sample Print/Locked Print
 - 4** Troubleshooting
 - 5** Printer Features
 - 6** Appendix

Introduction

This manual describes detailed instructions on the operation and notes about the use of this machine. To get maximum versatility from this machine all operators are requested to read this manual carefully and follow the instructions. Please keep this manual in a handy place near the machine.

Important

Contents of this manual are subject to change without prior notice. In no event will the company be liable for direct, indirect, special, incidental, or consequential damages as a result of handling or operating the machine.

Warning:

Use of controls or adjustment or performance of procedures other than those specified in this manual might result in hazardous radiation exposure.

Trademarks

Microsoft®, Windows® and Windows NT® are registered trademarks of Microsoft Corporation in the United States and/or other countries.

Adobe®, PostScript®, Acrobat® are registered trademarks of Adobe Systems Incorporated.

PCL® is a registered trademark of Hewlett-Packard Company.

AppleTalk, Apple, Macintosh and Mac are registered trademarks of Apple Computer, Incorporated.

IPS-PRINT™ Printer Language Emulation Copyright©2000, Oak Technology, Inc., All Rights Reserved.

UNIX is a registered trademark in the United States and other countries, licensed exclusively through X/Open Company Limited.

Bluetooth is a Trademark of the Bluetooth SIG, Inc. (Special Interest Group) and licensed to RICOH company limited.

Copyright © 2001 Bluetooth SIG, Inc.

The Bluetooth Trademarks are owned by Bluetooth SIG, Inc. USA

Other product names used herein are for identification purposes only and might be trademarks of their respective companies. We disclaim any and all rights in those marks.

The proper names of the Windows operating systems are as follows:

- The product name of Windows® 95 is Microsoft®Windows® 95
- The product name of Windows® 98 is Microsoft®Windows® 98
- The product name of Windows® Me is Microsoft®Windows®Millennium Edition (Windows Me)
- The product names of Windows® 2000 are as follows:
Microsoft® Windows® 2000 Advanced Server
Microsoft® Windows® 2000 Server
Microsoft® Windows® 2000 Professional
- The product names of Windows® XP are as follows:
Microsoft®Windows® XP Professional
Microsoft®Windows® XP Home Edition
- The product names of Windows Server™ 2003 are as follows:
Microsoft® Windows Server™ 2003 Standard Edition
Microsoft® Windows Server™ 2003 Enterprise Edition
Microsoft® Windows Server™ 2003 Web Edition
- The product names of Windows® NT are as follows:
Microsoft® Windows NT® Server 4.0
Microsoft® Windows NT® Workstation 4.0
Microsoft® Windows NT® Workstation operating system Version 4.0

Notes:

Some illustrations in this manual might be slightly different from the machine.

Certain options might not be available in some countries. For details, please contact your local dealer.

TABLE OF CONTENTS

Manuals for This Machine	1
How to Read This Manual	3

1. Setting Up the Printer Driver and Canceling a Print Job

Accessing Printer Properties	5
Windows 95/98/Me - Accessing Printer Properties	5
Windows 2000/XP - Accessing Printer Properties	6
Windows NT 4.0 - Accessing Printer Properties	7
Macintosh - Setting Up for Printing	9
Canceling a Print Job	10
Windows - Canceling a Print Job	10
Macintosh - Canceling a Print Job	11

2. Using the Document Server

Accessing the Document Server	13
--	-----------

3. Sample Print/Locked Print

Sample Print	15
Printing a Sample Print File.....	15
Deleting a Sample Print File.....	17
Checking the Error Log	17
Locked Print	19
Printing a Locked Print File	19
Deleting Locked Print Files	20
Checking the Error Log	21
Form Feed	22
Print Using a Selected Tray	22
Canceling Form Feed.....	23

4. Troubleshooting

Error & Status Messages on the Display Panel	25
The Machine Does Not Print	30
Other Printing Problems	34

5. Printer Features

Printer Features Menu	39
Adjusting Printer Features	41
Printer Features Parameters	42
Paper Input.....	42
List/Test Print	42
Maintenance.....	45
System	46
Host Interface.....	48
PCL Menu	49
PS Menu	50

6. Appendix

Finisher	51
Staple	52
Staple Position	52
Stapling Precautions	53
Collate	55
Spool Printing	57
Covers	59
Slip Sheets	61
Chaptering	63
User Defined Pages	65
System Settings (Parallel Connection)	66
Specifications	67
Options	68
INDEX	71

Manuals for This Machine

The following manuals describe the operational procedures of this machine. For particular functions, see the relevant parts of the manual.

Note

- Manuals provided are specific to machine type.
- Adobe Acrobat Reader is necessary to view the manuals as a PDF file.
- Two CD-ROMs are provided:
 - CD-ROM 1“Operating Instructions for Printer/Scanner”
 - CD-ROM 2“Scanner Driver & Document Management Utilities”

❖ **General Settings Guide**

Provides an overview of the machine.

It also describes System Settings (such as paper trays and user codes settings), Document Server functions, and troubleshooting.

❖ **Network Guide (PDF file - CD-ROM1)**

Describes procedures for configuring the machine and computers in a network environment.

❖ **Copy Reference**

Describes operations, functions, and troubleshooting for the machine’s copier function.

❖ **Facsimile Reference <Basic Features>**

Describes operations, functions, and troubleshooting for the machine’s facsimile function.

❖ **Facsimile Reference<Advanced Features>**

Describes advanced functions and settings for key operators.

❖ **Printer Reference 1**

Describes system settings and operations for the machine’s printer function.

❖ **Printer Reference 2 (PDF file - CD-ROM1) (this manual)**

Describes operations, functions, and troubleshooting for the machine’s printer function.

❖ **Scanner Reference (PDF file - CD-ROM1)**

Describes operations, functions, and troubleshooting for the machine’s scanner function.

❖ **Manuals for DeskTopBinder V2 Lite**

DeskTopBinder V2 Lite is a utility included on the CD-ROM labeled “Scanner Driver & Document Management Utilities”.

- DeskTopBinder V2 Lite Setup Guide (PDF file - CD-ROM2)
Describes installation of, and the operating environment for DeskTopBinder V2 Lite in detail. This guide can be displayed from the **[Setup]** dialog box when DeskTopBinder V2 Lite is installed.
- DeskTopBinder V2 Lite Introduction Guide (PDF file - CD-ROM2)
Describes operations of DeskTopBinder V2 Lite and provides an overview of its functions. This guide is added to the **[Start]** menu when DeskTopBinder V2 Lite is installed.
- Auto Document Link Guide (PDF file - CD-ROM2)
Describes operations and functions of Auto Document Link installed with DeskTopBinder V2 Lite. This guide is added to the **[Start]** menu when DeskTopBinder V2 Lite is installed.

❖ **Manuals for ScanRouter V2 Lite**

ScanRouter V2 Lite is a utility included on the CD-ROM labeled “Scanner Driver & Document Management Utilities”.

- ScanRouter V2 Lite Setup Guide (PDF file - CD-ROM2)
Describes installation of, settings, and the operating environment for ScanRouter V2 Lite in detail. This guide can be displayed from the **[Setup]** dialog box when ScanRouter V2 Lite is installed.
- ScanRouter V2 Lite Management Guide (PDF file - CD-ROM2)
Describes delivery server management and operations, and provides an overview of ScanRouter V2 Lite functions. This guide is added to the **[Start]** menu when ScanRouter V2 Lite is installed.

❖ **Other manuals**

- PS3 Supplement (PDF file - CD-ROM1)
- UNIX Supplement (available from an authorized dealer, or as a PDF file on our Web site)

How to Read This Manual

Symbols

In this manual, the following symbols are used:

WARNING:

This symbol indicates a potentially hazardous situation which, if instructions are not followed, could result in death or serious injury.

CAUTION:

This symbol indicates a potentially hazardous situation which, if instructions are not followed, may result in minor or moderate injury, or damage to property.

* The statements above are notes for your safety.

Important

If this instruction is not followed, paper might misfeed, originals might be damaged, or data might be lost. Be sure to read this.

Preparation

This symbol indicates prior knowledge or preparation is required before operation.

Note

This symbol indicates precautions for operation, or actions to take after mal-operation.

Limitation

This symbol indicates numerical limits, functions that cannot be used together, or conditions in which a particular function cannot be used.

Reference

This symbol indicates a reference.

[]

Keys and buttons that appear on the computer's display.

Keys that appear on the machine's display panel.

[]

Keys built into the machine's control panel.

Keys on the computer's keyboard.

1. Setting Up the Printer Driver and Canceling a Print Job

Accessing Printer Properties

Windows 95/98/Me - Accessing Printer Properties

Changing default settings

1 On the [Start] menu, point to [Settings], and then click [Printers].

The [Printers] window appears.

2 Click the icon of the machine whose default you want to change.

3 On the [File] menu, click [Properties].

The printer properties dialog box appears.

4 Make the settings you require, and then click [OK].

 **Note**

- With some applications, printer driver settings are not used, and the application's own settings are applied.

Making settings from an application

To make settings for a specific application, open the printer properties dialog box from that application. The following example describes how to make settings for the WordPad application that comes with Windows 95/98/Me.

 **Note**

- Actual procedures for opening the printer properties dialog box may vary depending on the application. For more information, see the operating instructions that come with the application you are using.
- Any setting you make in the following procedure is valid for the current application only:

1 On the [File] menu, click [Print].

The [Print] dialog box appears.

2 In the [Name] list, select the machine you want to use, and then click [Properties].

The printer properties dialog box appears.

3 Make the settings you require, and then click [OK].

4 Click [OK] to start printing.

Windows 2000/XP - Accessing Printer Properties

Changing default settings - Printer properties

 **Limitation**

- Changing machine settings requires Manage Printers permission. Members of Administrators and Power Users groups have Manage Printers permission by default. When you set up options, log on using an account that has Manage Printers permission.

1 On the [Start] menu, point to [Settings], and then click [Printers].

The [Printers] window appears.

 **Note**

- In Windows XP Professional, open the [Printers and Faxes] window on the [Start] menu.
- In Windows XP Home Edition, open the [Printers and Faxes] window by clicking [Control Panel] from the [Start] button on the taskbar, click [Printers and Other Hardware], and then click [Printers and Faxes].

2 Click the icon of the machine whose default you want to change.

3 On the [File] menu, click [Properties].

The printer properties dialog box appears.

4 Make the settings you require, and then click [OK].

 **Note**

- Normally you do not have to change the “Form to Tray Assignment” settings on the [Device Settings] tab in the PostScript 3 printer driver.
- Settings you make here are used as default for all applications.

Changing default settings - Printing preferences properties

 **Limitation**

- Changing machine settings requires Manage Printers permission. Members of the Administrators and Power Users groups have Manage Printers permission by default. When you set up options, log on using an account that has Manage Printers permission.

1 On the [Start] menu, point to [Settings], and then click [Printers].

The [Printers] window appears.

 **Note**

- In Windows XP Professional, open the [Printers and Faxes] window on the [Start] menu.
- In Windows XP Home Edition, open the [Printers and Faxes] window by clicking [Control Panel] from the [Start] button on the taskbar, click [Printers and Other Hardware], and then click [Printers and Faxes].

2 Click the icon of the machine whose default you want to change.

3 On the [File] menu, click [Printing Preferences...].

The [Printing Preferences] dialog box appears.

- 4** Make the settings you require, and then click **[OK]**.

 **Note**

- Settings you make here are used as default for all applications.

Making settings from an application

To make settings for a specific application, open the **[Print]** dialog box from that application. The following example describes how to make settings for the WordPad application that comes with Windows 2000/XP.

 **Note**

- Actual procedures for opening the **[Print]** dialog box vary depending on the application. For more information, see the operating instructions that come with the application you are using.
- Any setting you make in the following procedure is valid for the current application only.

- 1** On the **[File]** menu, click **[Print...]**.
The **[Print]** dialog box appears.
- 2** In the **[Select Printer]** list, select the machine you want to use, and then click the tab for which you want to change print settings.

 **Note**

- In Windows XP, click **[Preference]** to open the Printing Preferences dialog box.

- 3** Make the settings you require.
- 4** Click **[Print]** to start printing.
Under Windows XP, click **[OK]**, and then click **[Print]** to start printing.

Windows NT 4.0 - Accessing Printer Properties

Changing default settings - Printer properties

 **Limitation**

- Changing machine settings requires Full Control access permission. Members of Administrators, Server Operators, Print Operators, and Power Users groups have Full Control permission by default. When you set up options, log on using an account that has Full Control permission.

- 1** On the **[Start]** menu, point to **[Settings]**, and then click **[Printers]**.

The **[Printers]** window appears.

- 2** Click the icon of the machine whose default you want to change.

- 3** On the **[File]** menu, click **[Properties]**.

The printer properties dialog box appears.

- 4** Make the settings you require, and then click **[OK]**.

 **Note**

- Normally you do not have to change the "Form to Tray Assignment" settings on the **[Device Settings]** tab in the PostScript 3 printer driver.
- Settings you make here are used as default for all applications.

Changing the default settings - Default document properties

⚠ Limitation

- ❑ Changing machine settings requires Full Control access permission. Members of the Administrators, Server Operators, Print Operators, and Power Users groups have Full Control permission by default. When you set up options, log on using an account that has Full Control permission.

1 On the **[Start]** menu, point to **[Settings]**, and then click **[Printers]**.

The **[Printers]** window appears.

2 Click the icon of the machine whose default you want to change.

3 On the **[File]** menu, click **[Document Defaults]**.

The **[Default]** dialog box appears.

4 Make the settings you require, and then click **[OK]**.

Note

- ❑ Settings you make here are used as default for all applications.

Making settings from an application

To make settings for a specific application, open the printer properties dialog box from that application. The following example describes how to make settings for the WordPad application that come with Windows NT 4.0.

Note

- ❑ Actual procedures for opening the printer properties dialog box vary depending on the application. For more information, see the operating instructions that come with the application you are using.
- ❑ Any setting you make in the following procedure is valid for the current application only.

1 On the **[File]** menu, click **[Print]**.

The **[Print]** dialog box appears.

2 In the **[Name]** list, select the machine you want to use, and then click **[Properties]**.

The printer properties dialog box appears.

3 Make the settings you require, and then click **[OK]**.

4 Click **[OK]** to start printing.

Macintosh - Setting Up for Printing

Making paper settings from an application

- 1** Open the file you want to print.
- 2** On the [File] menu, click [Page Setup].
The [AdobePS Page Setup] dialog box appears.
- 3** Make sure the machine you want to use is shown in the [Printer:] box.

Note

- In Mac OS X, this is called [Format for:].
- If the machine is not shown in the [Printer:] box, use the pop-up menu to display a list of available machines.

Reference

The actual appearance of Page Setup depends on the application you are using. See the operating instructions that come with the Macintosh for more information.

- 4** In the [Paper:] box, select the paper size.
- 5** Make the settings you require, and then click [OK].

Setting up for printing from an application

- 1** Open the file you want to print.
- 2** On the [File] menu, click [Print].
The [Printer Features] dialog box appears.
- 3** Make sure the machine is selected in the [Printer:] box.
- 4** Make the settings you require, and then click [Print] to start printing.

Canceling a Print Job

1

Windows - Canceling a Print Job

1 Double-click the printer icon on the Windows taskbar.

A window appears, showing all print jobs currently queued for printing. Check the current status of the job you want to cancel.

2 Select the name of the job you want to cancel.

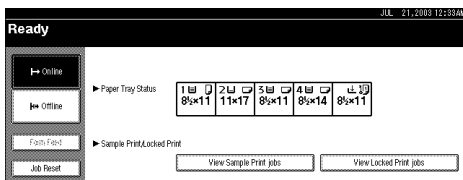
3 On the [Document] menu, click [Cancel Printing].

Note

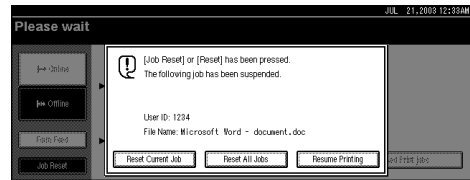
- In Windows XP and Windows NT, click **[cancel]** on the **[Document]** menu.
- In Windows 95/98/Me, 2000 or NT 4.0, you can also open the print job queue window by double-clicking the machine icon in the **[Printers]** machine window (the **[Printers and Faxes]** window under Windows XP).

4 Press the **[Printer]** key on the machine's control panel.

5 Press **[Job Reset]** on the display panel.



6 Press **[Reset Current Job]** or **[Reset All Jobs]**.



- **[Reset Current Job]**: cancels the print job currently being processed.
- **[Reset All Jobs]**: cancels all jobs in the print queue.
- **[Resume Printing]**: resumes printing jobs.

A confirmation message appears.

7 Press **[Yes]** to cancel the print job.

Note

- Press **[No]** to return to the previous display.

Important

- If the machine is shared by multiple computers, be careful not to accidentally cancel someone else's print job.
- If the machine is connected to the computer using a parallel cable, sent print jobs may be canceled if **[Reset All Jobs]** is pressed while "Waiting..." is on the display panel. After the interval set in **[I/O Timeout]** in Printer Features has passed, the next print job can be sent. A print job sent from a different client computer will not be canceled in this case.

Note

- You cannot stop printing data that has already been processed. For this reason, printing may continue for a few pages after you press **[Job Reset]**.
- A print job containing a large volume of data may take considerable time to stop.

Macintosh - Canceling a Print Job

1 Double-click the printer icon on the desktop.

A window appears, showing all print jobs currently queued for printing. Check the current status of the job you want to cancel.

Note

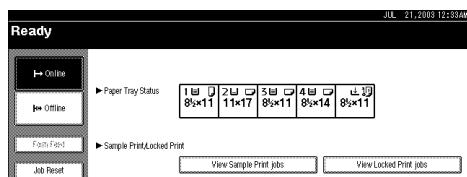
- In Mac OS X, start Print Center.

2 Select the name of the job you want to cancel.

3 Click the pause icon, and then click the trash icon.

4 Press the **[Printer]** key on the machine's control panel.

5 Press **[Job Reset]** on the display panel.



6 Press **[Reset Current Job]** or **[Reset All Jobs]**.



- **[Reset Current Job]**: cancels the print job currently being processed.
- **[Reset All Jobs]**: cancels all jobs in the print queue.
- **[Resume Printing]**: resumes printing jobs.

A confirmation message appears.

7 Press **[Yes]** to cancel the print job.

Note

- Press **[No]** to return to the previous display.

Important

- If the machine is shared by multiple computers, be careful not to accidentally cancel someone else's print job.

Note

- You cannot stop printing data that has already been processed. For this reason, printing may continue for a few pages after you press **[Job Reset]**.
- A print job containing a large volume of data may take considerable time to stop.

2. Using the Document Server

Accessing the Document Server

The Document Server enables you to store documents on the machine's hard disk, allowing you to edit and print as and when you want.

Limitation

- Applications with their own drivers, such as PageMaker, do not support this function.

Reference

For more information about Document Server functions, see *General Settings Guide*.

For information about how to access Document Server from a client, see the printer driver Help.

Note

- When you use the Document Server, the following functions can be selected using the machine's control panel:
 - Copies
 - Collate
 - Duplex
 - Staple
 - Paper selection: Paper source tray, paper type, paper output tray.
 - Functions related to paper selection: Cover sheets, slip sheets, chaptering.
- The above items are dimmed, so you cannot set them from the printer properties dialog box when the Document Server is selected.
- You must enter a user ID, using up to eight alphanumeric characters.
- You should enter a Password and File Name to distinguish the job from others.
- Up to 3,000 files can be stored in the Document Server. No new files can be stored after 3,000 is reached. Even if less than 3,000 files are stored, new files cannot be stored when
 - a file to be stored contains more than 1,000 pages,
 - the total number of pages contained in files stored exceeds 9,000,
 - the hard disk is full.
- The Document Server also stores files scanned using the Automatic Document Feeder (ADF) or exposure glass. You should delete unnecessary stored files once in a while so as not to exceed the capacity of the hard disk. For how to delete stored files, see *General Settings Guide*.
- When using the hard disk for functions other than those of Document Server, you may be unable to store new files in the Document Server, even if there are less than 3,000 files stored.

3. Sample Print/Locked Print

Sample Print

Use this function to print only the first set of a multiple-set print job. After you have checked the result, remaining sets can be printed or canceled using the machine's control panel. This can reduce misprints due to mistakes in content or settings.

Note

- If the application has a collate option, make sure it is not selected before sending a print job. By default, sample print jobs are automatically collated by the printer driver. If a collate option is selected from the application's **[Print]** dialog box, more prints than intended may be produced.
- You can identify the file you want to print by user ID and date and time when the job was stored.
- The number of pages the machine can save depends on the contents of the print image. For example, the machine can save up to 30 jobs or 1,000 pages, including locked print files, depending on data volume.
- If the first set of the sample print files is not as you expected and you do not want to print remaining sets, delete the sample print file using the display panel. If you print the remaining sets of the sample print file, the job in the machine is deleted automatically.

Printing a Sample Print File

The following procedure describes how to print a sample print file with the PCL 6/5e printer driver. For information about how to print a sample print file with the PostScript 3 printer driver, see *PostScript 3 Unit Type 2027 Operating Instructions Supplement* included as a PDF file on the CD-ROM.

Limitation

- Applications with their own drivers, such as PageMaker, do not support this function.
- If you are using Mac OS X, this function cannot be used.

1 Configure the sample print in the printer driver's properties.

Reference

For details about configuring the PCL 6/5e or RPCS™ printer driver, see the relevant Help files.

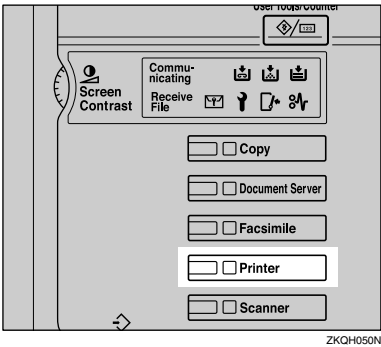
2 Start printing from the application's **[Print]** dialog box.

Note

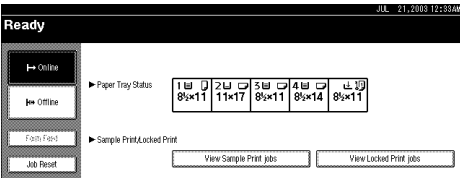
- Make sure to set more than two copies.

The sample print job is sent to the machine, and the first set is printed.

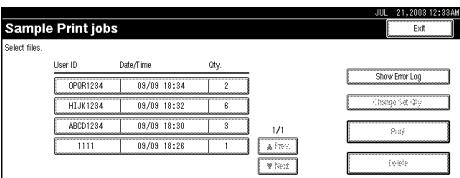
3 On the machine's control panel, press the **[Printer]** key to display the Printer screen.



4 Press **[View Sample Print jobs]**.



A list of the sample print files stored in the machine appears.



The following items also appear:

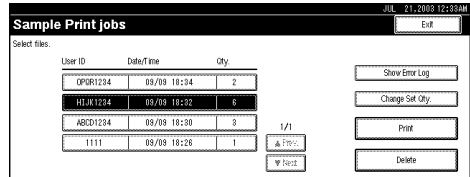
- User ID: The user ID set up by the printer driver.
- Date/Time : The date and time when the job was sent from the computer.
- Qty. : The number of remaining sets.

5 Select the file you want to print by pressing it.

Note

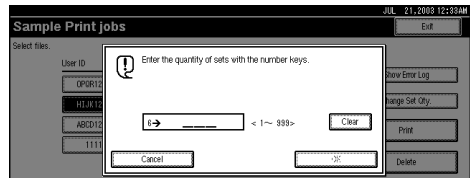
- ❑ Press **[▲Prev.]** or **[▼Next.]** to scroll through the list.
- ❑ Only one file can be selected at a time.

6 Press **[Change Set Qty.]** to change the number of sets to be printed.



If you do not want to change the set quantity, proceed to step **8**.

7 Enter the new number of sets using the number keys, and then press **[OK]**.



The screen returns to the file list screen.

Note

- ❑ You can enter up to 999 sets.
- ❑ Press **[Clear]** to correct any entry mistakes.
- ❑ If you want to cancel changing the set quantity, press **[Cancel]**.

8 Press **[Print]**.

The print confirmation screen appears.

9 Press [Yes].

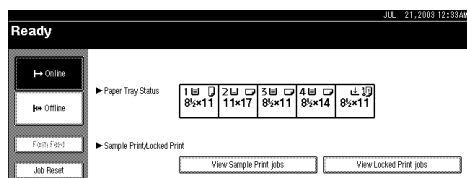
The remaining sets are printed.

Note

- Press [No] to cancel printing.
- When printing is completed, the stored file will be deleted.
- If printing is stopped by pressing [Job Reset] after it has started, the file will be deleted.
- If there is a print job outstanding, this will be printed before the sample print job.

Deleting a Sample Print File

If you are not satisfied with the sample printout, you can delete the sample print file, revise it and print it again until the settings are suitable.

1 Press the [Printer] key to display the Printer screen.**2** Press [View Sample Print jobs].

A list of sample print files stored in the machine appears.

3 Select the file you want to delete by pressing it.**Note**

- Press [▲Prev.] or [▼Next.] to scroll through the list.
- Only one file can be selected at a time.

4 Press [Delete].

The delete confirmation screen will appear.

5 Press [Yes] to delete the file.

After the file has been deleted, the file list screen will return.

Note

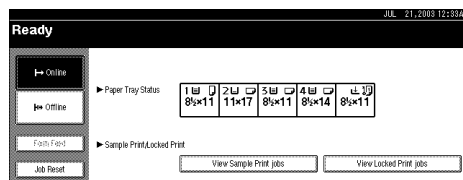
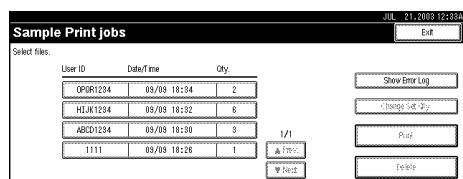
- If you do not want to delete the file, press [No].

Checking the Error Log

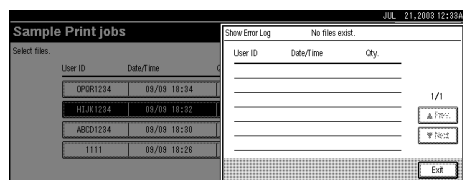
If a file could not be stored, you can check the error log on the control panel.

Limitation

- The error log displays only the 20 most recent entries. If the power is turned off, the log is deleted.

1 Press the [Printer] key to display the Printer screen.**2** Press [View Sample Print jobs].**3** Press [Show Error Log].

An error log list appears.



 **Note**

- Press [**▲Prev.**] or [**▼Next.**] to scroll through the error files.
- Press [**Exit**] after checking the log.
- To print files that appear in the error log, resend them after stored files have been printed or deleted.

Locked Print

Use this function to maintain privacy when printing confidential documents on the machine over a shared network. Usually, it is possible to print data using the display panel once it is stored in this machine. When using Locked Print, it is not possible to print unless a password is entered on the machine's display panel. Your confidential documents will be safe from being viewed by other people.

Note

- If the application has a collate option, make sure it is not selected before sending a print job. Locked print jobs are automatically collated by the printer driver as default. If a collate option is selected in the application print dialog box, more sets than intended may be printed.
- You can identify the file you want to print by User ID, and date and time when the job was stored.
- The number of pages the machine can save depends on print image content. For example, the machine can save up to 30 jobs or 1,000 pages including sample print files, depending on data volume.
- After the locked print file is printed, the job is automatically deleted.
- Turning off the machine's main power switch deletes locked print files.

Printing a Locked Print File

The following procedure describes how to print a locked print file with the PCL 6/5e printer driver. For information about how to print a locked print file with the PostScript 3 printer driver, see *PostScript 3 Unit Type 2027 Operating Instructions Supplement* included as a PDF file on the CD-ROM.

Limitation

- Applications with their own drivers, such as PageMaker, do not support this function.
- If you are using Mac OS X, this function cannot be used.

1 Configure the locked print in the printer driver's properties.

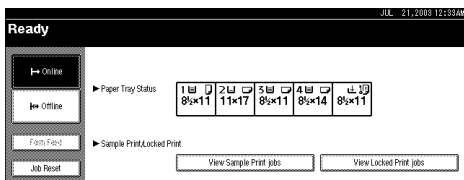
Reference

For details about configuring the PCL 6/5e or RPCS™ printer driver, see the corresponding Help files.

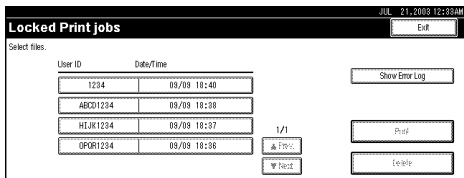
2 Start printing from the application's [Print] dialog box.

The locked print job is sent to the machine.

3 On the machine's control panel, press the [Printer] key to display the Printer screen.

4 Press **[View Locked Print jobs]**.

A list of stored locked print files appears.



The following items also appear:

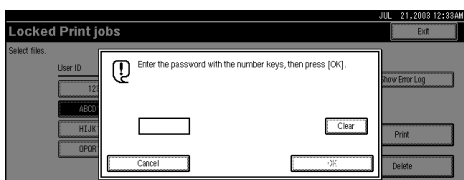
- User ID: The user ID set up by the printer driver.
- Date/Time: The date and time when the job was sent from the computer.

5 Select the file you want to print by pressing it.**Note**

- Press **[▲Prev.]** or **[▼Next.]** to scroll through the list.
- Only one file can be selected at a time.

6 Press **[Print]**.

The password screen appears.

**7** Enter the password using the number keys, and then press **[OK]**.

The print confirmation screen appears.

Note

- A confirmation screen will appear if the password is not entered correctly. Press **[OK]** to enter the password again.

8 Press **[Yes]**.

The locked file is printed.

Note

- Press **[No]** to cancel printing.
- If printing is stopped by pressing **[Job Reset]** after it has started, the file will be deleted.

Deleting Locked Print Files

1 Press the **[Printer]** key to display the Printer screen.**2** Press **[View Locked Print jobs]**.

A list of stored locked print files stored appears.

3 Select the file you want to delete by pressing it.**Note**

- Press **[▲Prev.]** or **[▼Next.]** to scroll through the list.
- Only one file can be selected at a time.

4 Press **[Delete]**.

The password screen is displayed.

5 Enter the password using the number keys, and then press **[OK]**.

The delete confirmation screen appears.

Note

- A confirmation screen will appear if the password is not entered correctly. Press **[OK]** to enter the password again.

6 Press **[Yes]**.

After the file has been deleted, the file list screen returns.

Note

- If you do not want to delete the file, press **[No]**.
- If you forget your password, select **[Unlock]** from **[▶Temporarily Unlock Files]** in **[Password Management for Stored Files]** on the **[Key Operator Tools]** tab of the System Settings screen. With this setting, the password screen is not displayed in the procedure above. For more information about **[Display Password with Stored File]**, see *General Settings Guide*.

Checking the Error Log

If a file could not be stored in this machine, you can check the error log on the display panel.

Limitation

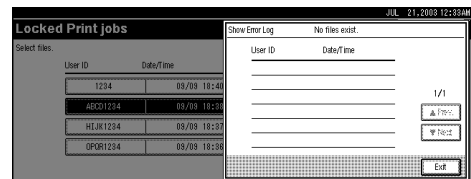
- The error log displays only the 20 most recent entries. If the power is turned off, the log will be deleted.

1 Press the **[Printer]** key to display the Printer screen.

2 Select **[View Locked Print jobs]**.

3 Press **[Show Error Log]**.

An error log list appears.

**Note**

- Press **[▲Prev.]** or **[▼Next.]** to scroll through the error files.
- Press **[Exit]** after checking the log.
- To print files that appear in the error log, resend them after stored files have been printed or deleted.

Form Feed

This section gives instructions for operating the machine when there is no tray for the selected paper size or type, or when paper loaded in the machine has run out.

Limitation

- The tray cannot be changed if the following functions are set for it:
 - Staple
 - Duplex Print to a tray that does not support duplex printing
 - Cover Sheet
 - Front/Back Covers
 - Slip Sheets
 - Chaptering

Note

- If form feed is selected for a tray with the following settings, you can change the tray by canceling the settings:
 - Staple
- If Auto Continue is selected, form fed paper is printed after a set interval. See p.46 "System".

If the machine does not have a tray for the selected paper size or paper type, or if the selected paper loaded in the machine has run out, a caution message appears.

If this message appears, do one of the following:

Print Using a Selected Tray

- 1** Select the tray for form feed from those that appear on the display panel.

If you want to print after adding paper to the tray, select the tray after loading the correct paper.

Note

- To load paper in the bypass tray, see "Setting Paper on the Bypass Tray", *Printer Reference 1*.

- 2** Press [Continue].

The machine prints using the selected tray.

Note

- If a tray with a smaller paper size is selected, the print job may be cut short, or other problems may occur.

Canceling Form Feed

1 Press [Reset].

Delete the stored print job, and then cancel form feed.

2 Press [Reset Current Job] or [Reset All Jobs].



- **[Reset Current Job]:** cancels the print job currently being processed.
- **[Reset All Jobs]:** cancels all jobs in the print queue.
- **[Resume Printing]:** resumes printing jobs.

A confirmation message appears.

3 Press [Yes] to cancel the print job.

Note

- Press **[No]** to return to the previous display.

Important

- If the machine is shared by multiple computers, be careful not to accidentally cancel someone else's print job.
- Under Windows, If the machine is connected to the computer using a parallel cable, sent print jobs may be canceled if **[Reset All Jobs]** is pressed while "Waiting..." is on the display panel. After the interval set in **[I/O Time-out]** in Printer Features has passed, the next print job can be sent. A print job sent from a different client computer will not be canceled in this case.

Note

- You cannot stop printing data that has already been processed. For this reason, printing may continue for a few pages after you press **[Job Reset]**.
- A print job containing a large volume of data may take considerable time to stop.

Reference

p.10 "Canceling a Print Job"

4. Troubleshooting

Error & Status Messages on the Display Panel

This section describes the principal messages that appear on the panel display. If a message not described here appears, act according to the message.

Reference

Before turning the main power off, see 'Turning On the Power', General Settings Guide.



❖ Status messages

Message	Status
Hex Dump Mode	In Hex Dump mode, the machine receives data in hexadecimal format. Turn off the machine after printing, and then turn back on.
Offline	The machine is offline. To start printing, switch the machine online by pressing [Offline] on the display panel.
Please wait.	The machine is preparing the development unit. Wait a while.
Printing...	The machine is printing. Wait a while.
Ready	This is the default ready message. The machine is ready for use. No action is required.
Resetting job...	The machine is resetting the print job. Wait until "Ready" appears on the display panel.
Waiting...	The machine is waiting for the next data to print. Wait a while.



❖ Alert messages

Messages/Second messages	Causes	Solutions
Cannot connect with the wireless card.	The IEEE 802.11b card may have come off, or an error may have occurred in the IEEE 802.11b card.	Turn off the main power switch, and check the card is installed correctly. If the message appears again, contact your sales or service representative.
Close duplex unit cover.	The cover of the duplex unit is open.	Close the cover of the duplex unit.
Collate has been cancelled.	The collate print function has been canceled.	Turn off the main power switch, and back on again. If the message appears again, contact your sales or service representative.

Messages/Second messages	Causes	Solutions
DIMM has a problem.	An error has occurred in the DIMM inside the machine.	Contact your sales or service representative.
Driver setting error. (Memory)	There is an error in the downloaded font(s).	Reset the parameter for downloading fonts.
	Insufficient memory or memory settings for the printer driver may not match memory actually installed.	Specify correct memory capacity on the [Change Accessories...] tab in the RPCS™ printer driver.
		To print the image correctly, increase memory capacity, or reduce resolution image.
Duplex has been cancelled.	Duplex printing has been canceled.	Check the paper used is suitable for duplex printing. Or, increase memory capacity. When installing a memory module in the machine, contact your sales or service representative.
Ethernet board has a problem.	An error has occurred in the Ethernet board.	Turn off the main power switch, and back on again. If the message appears again, contact your sales or service representative.
Exceeded max capacity of document server. Cannot stored.	Hard disk drive capacity exceeded storing to the Document Server.	Delete some files stored in the Document Server or decrease the file size to be downloaded.
Exceeded max number of files of document server. Cannot stored.	The maximum number of files stored in the Document Server has been exceeded.	Delete some files stored in the Document Server.
Exceeded max number of pages of document server. Cannot stored.	The maximum number of pages stored in the Document Server has been exceeded.	Delete some pages stored in the Document Server or decrease the number of pages to be downloaded.
Exceeded max. stored files in sample print and locked print.	The maximum number of stored files has been exceeded during Sample Print or Locked Print.	Delete some stored files or reduce file sizes.
Exceeded max. stored pages in sample print and locked print.	The maximum number of stored pages has been exceeded during Sample Print or Locked Print.	Reduce the number of pages to be printed.

Messages/Second messages	Causes	Solutions
Exceeded max. pages. Collate is incomplete.	The maximum number of pages has been exceeded for collation.	Turn off the main power switch, and back on again. Reduce the number of pages to be printed. If the message appears again, contact your sales or service representative.
Finisher is in use for another function. Please wait.	The finisher is in use by another function, such as the copier function.	Wait until the other function has finished using the finisher.
Following output tray is full. ### Remove the paper. ###	The indicated output tray is full.  Note <input type="checkbox"/> "###" in the message represents a output tray.	Remove the paper.
HDD has a problem.	An error has occurred in the hard disk drive.	Turn off the main power switch, and back on again. If the message appears again, contact your sales or service representative.
HDD has not been installed.	Locked Print was performed without the hard disk installed, or the hard disk is damaged.	Contact your sales or service representative.
HDD is full.	The maximum hard disk area size for form/font has been exceeded.	Delete unused form /font types.
	An HDD overflow error occurred during Sample Print or Locked Print.	Delete some stored files, or reduce the size of the file to be downloaded.
IEEE 802.11b (Wireless LAN) has a problem.	IEEE 802.11b card was not inserted when the machine was turned on, or it was pulled out after the machine turned on.	Turn off the machine and check the IEEE 802.11b card is inserted correctly. Then, turn the machine on again. If the message appears again, call your service center.
LCT has a problem. Turn Main Power Switch off then on. If the error appears again, call service representative.	An error has occurred in the Large Capacity Tray (LCT).	Turn off the main power switch, wait five minutes, and on again. If the message appears again, call your sales or service representative.
 Lower Staple is almost empty.	There are only a few staples left in the lower stapler.	Load more staples.


Messages/Second messages	Causes	Solutions
NV-RAM has a problem.	An error has occurred in the optional memory unit.	Turn off the main power switch, and back on again. If the message appears again, call your sales or service representative.
Output tray has been changed.	The output tray has been changed because of the paper size limitation of the selected tray.	Select the correct output tray.
Paper in duplex unit. Open cover and remove paper.	There is a misfeed in the duplex unit.	Open the cover of the duplex unit, and remove the misfed paper.
Paper in staple tray. Open finisher cover and remove paper.	There is paper remaining inside the finisher.	Open the cover of the finisher, and remove the paper.
Parallel I/F board has a problem.	An error has occurred in the parallel interface board.	Contact your sales or service representative.
Print overrun.	The image data has been thinned out due to image compression.	Increase memory capacity. When installing a memory module in the machine, contact your sales or service representative.
Problems with the wireless board.	An error may have occurred in the IEEE 802.11b card (wireless LAN board).	Turn off the main power switch, and back on again. If the message appears again, contact your sales or service representative.
Problems with the wireless card.	An error may have occurred in the IEEE 802.11b card.	
RPCS graphic error.	There is insufficient graphics memory to print the data.	Specify the correct memory capacity on the [Change Accessories...] option in the RPCS™ printer driver.
		To print the image correctly, install more memory in the machine, or reduce image resolution.
RPCS memory overflow.	A memory overflow occurred during the print job. After part of the data is printed, the print job is suspended.	To print the image correctly, install more memory in the machine, or reduce image resolution.
RPCS syntax error.	Bidirectional transmission may not be working properly, or the RPCS™ printer driver settings may not be correct.	Confirm the option settings for the printer driver match the options installed on the machine.

Messages/Second messages	Causes	Solutions
Selected paper tray is in use for another function. Please wait.	The specified paper tray is in use by another function, such as the copier function.	Wait until the other function has finished using the specified paper tray.
Shift tray has a problem. Call service representative. 	A malfunction occurs when using the shift function.	Contact your sales or service representative.
Staple has been cancelled.	Staple printing has been canceled.	Check the paper feed direction, paper orientation and stapling position.
Staple unit is in use for another function. Please wait.	The staple unit is in use by another function, such as the copier function.	Wait until the other function has finished using the staple unit.
 Toner is almost empty.	The toner has almost run out.	Replace the toner cartridge with a new one.
Turn the main power switch off, then check the card.	The IEEE 802.11b card may have come off, or an error may have occurred in the IEEE 802.11b card.	Turn off the main power switch, and check the card is installed correctly. If the message appears again, contact your sales or service representative.
Unauthorized user access. Print job has been cancelled.	Print job canceled due to user restrictions.	Check the User Code permission status.
USB has a problem.	An error has occurred in the USB interface.	Turn off the main power switch, and back on again. If the message appears again, contact your sales or service representative.

The Machine Does Not Print

4

Possible Cause	Solutions
Is the power on?	Check the cable is securely plugged into the power outlet and the machine. Turn on the main power switch.
Is the machine online?	If not, press [↪Online] on the display panel.
Does the printer function status indicator stay red?	If so, check the error message on the display panel and take required action.
Is there a warning status or error message on the display panel?	If so, check the error message or warning status on the display panel and take the required action.
Can you print a configuration page?	If you cannot print a configuration page, there maybe a machine malfunction. Contact your sales or service representative. See p.42 "Printing the configuration page" for printing a configuration page.
Is the interface cable connected securely to the machine and computer?	Connect the interface cable securely. If it has a fastener, fasten that securely as well. See "Connecting the Machine", <i>Printer Reference 1</i> .
Are you using the correct interface cable?	The type of interface cable you should use depends on the computer. Be sure to use the correct one. If the cable is damaged or worn, replace it. See "Connecting the Machine", <i>Printer Reference 1</i> .
Was the interface cable connected after the machine was turned on?	Connect the interface cable <i>before</i> turning on the machine.
Is the signal status satisfactory when using wireless LAN in infrastructure mode ?	To check signal status, press [User Tools/Counter] on the display panel, and then press [System Settings] on the display panel. On the [Interface Settings] tab, select [IEEE 802.11b] , and then press [Wireless LAN Signal] . If signal quality is poor, move the machine to a location where radio waves can pass or remove objects that might cause interference. Note <input type="checkbox"/> You can check signal status only when using wireless LAN in infrastructure mode.
When using wireless LAN, is the SSID correctly set?	Check using the machine's display panel that the SSID is correctly set. See "Interface Settings/IEEE 802.11b (Option)", <i>General Settings Guide</i> .

Possible Cause	Solutions
When using wireless LAN, is the access point correctly set?	<p>Check access point settings when in infrastructure mode. Depending on the access point, client access may be limited by MAC address.</p> <p>Also, check there are no problems in transmission between access point and wired clients, and between access point and wireless clients.</p>
When using wireless LAN, is the LED on the wireless LAN card lit or blinking?	<p>Confirm the orange LED is lit, and the green LED is lit or blinks during transmission.</p>
Is the wireless LAN being used in ad hoc mode?	<p>Turn the main power off and back on. See “Turning On the Power”, General Settings Guide.</p> <p>Otherwise, configure [Network] in [Interface Settings] in [System Settings]. See “Setting Up the Machine on a Network”, Network Guide.</p>
Did you change the option settings on the machine?	<p>When using the RPCS™ printer driver on Windows 2000 and connecting with IEEE 1394, an error may occur if you change the option settings on the machine. In this case, follow the procedure below:</p> <ol style="list-style-type: none"> ① Unplug the IEEE 1394 interface cables connected to the computer. ② Run the utility tool for the IEEE 1394 interface board, which is stored in the following path on the CD-ROM “Printer Drivers and Utilities”. <code>\UTILITY\1394\</code> <p> Reference</p> <p>For more information about using the utility tool for IEEE 1394, see the README file in the same directory on the CD-ROM.</p> <ol style="list-style-type: none"> ③ Restart the computer. ④ Connect the computer to the machine using the IEEE 1394 interface cables.

Problem	Solutions
<p>Is the Data In indicator blinking or lit after starting the print job?</p>	<p>If not, data is not being sent to the machine.</p> <ul style="list-style-type: none"> ❖ When the machine is connected to the computer using the interface cable <p>Check the machine port settings are correct. For parallel port connection, port LPT1 or LPT2 should be set.</p> <ul style="list-style-type: none"> • Windows 95/98/Me <ol style="list-style-type: none"> ① Click the [Start] button, point to [Settings], and then click [Printers]. ② Click the icon of the machine. On the [File] menu, click [Properties]. ③ Click the [Details] tab. ④ In the [Print to the following port(s)] list, confirm the correct port is selected. • Windows 2000 <ol style="list-style-type: none"> ① Click the [Start] button, point to [Settings], and then click [Printers]. ② Click the icon of the machine. On the [File] menu, click [Properties]. ③ Click the [Ports] tab. ④ In the [Print to the following port(s)] list, confirm the correct port is selected. • Windows XP Professional <ol style="list-style-type: none"> ① Click the [Start] button, and then click [Printers and Faxes]. ② Click the icon of the machine. On the [File] menu, click [Properties]. ③ Click the [Ports] tab. ④ In the [Print to the following port(s)] list, confirm the correct port is selected. • Windows XP Home Edition <ol style="list-style-type: none"> ① Click the [Start] button, click [Control Panel], click [Printers and Other Hardware], and then click [Printers and Faxes]. ② Click the icon of the machine. On the [File] menu, click [Properties]. ③ Click the [Ports] tab. ④ In the [Print to the following port(s)] list, confirm the correct port is selected. • Windows NT 4.0 <ol style="list-style-type: none"> ① Click the [Start] button, point to [Settings], and then click [Printers]. ② Click the icon of the machine. On the [File] menu, click [Properties]. ③ Click the [Ports] tab. ④ In the [Print to the following port(s)] list, confirm the correct port is selected.



Problem	Solutions
Is the Data In indicator blinking or lit after starting the print job?	❖ Network connection Contact your network administrator.

Other Printing Problems

Problem	Causes and Solutions
The print on the entire page is faded.	<p>If [Toner Saving] is selected on the [Print Quality] tab in the printer driver, the entire page will be faded when printed.</p> <p>See the printer driver Help.</p>
Print is smudges.	<p>Settings for thick paper have not been made when printing on thick paper.</p> <ul style="list-style-type: none"> • PCL 6/5e and PostScript 3 Select [Thick] in the [Type:] list on the [Paper] tab. • RPCS™ Select [Thick] in the [Paper type:] list on the [Print Settings] tab.
When printing graphics, the output and the screen are different.	<p>If the printer driver is configured to use the graphics command, the graphics command from the machine is used to print.</p> <p>If you want to print accurately, set the printer driver to print without using the graphics command.</p> <p>See the printer driver Help.</p>
Page layout is not as expected.	<p>Print areas differ depending on machine used. Information that fits on a single page on one machine may not fit on a single page of another machine.</p> <p>Adjust the [Printable area:] setting in the [Printer Configuration] dialog box on the [Print Settings] tab in the RPCS™ printer driver.</p> <p>See the printer driver Help.</p>
printing is malfunctioning.	<ul style="list-style-type: none"> • Duplex printing cannot be done with paper set in the bypass tray. When using duplex printing, make settings to use paper from a tray other than the bypass tray. • Duplex printing cannot be done with thick paper, OHP transparencies, or labels specified as the paper type. Specify another paper type. • Duplex printing cannot be done with a tray for which [1 Sided Copy] has been specified as Paper Type on the System Settings menu. Change the Paper Type setting for the tray to [2 Sided Copy] on the System Settings menu. See <i>General Settings Guide</i>.

Problem	Causes and Solutions
When using Windows 95/98/Me, Windows 2000/XP, or Windows NT 4.0, either combined printing or booklet print does not come out as expected.	Make sure the application's paper size and orientation settings match those of the printer driver. If a different paper size and orientation are set, select the same size and orientation.
When using Windows 95/98/Me, Windows 2000/XP, or Windows NT 4.0, Auto Reduce/Enlarge print does not come out as expected.	
A print instruction was issued from the computer, but printing did not start.	User code management may have been set. Ask the administrator about valid user codes. To print, the user code must be entered from the printer driver.
The print job is not canceled even when the machine is switched to offline status.	Even when the machine is offline, printing is performed when [Job acceptance priority] has been set in Signal Control in the System Settings menu. Change the setting of Signal Control to Printer priority. See "User Tools (System Settings)", <i>General Settings Guide</i> .
Photo images are coarse.	Some applications reduce print resolution.
Images are cut off, or excess is printed.	You may be using paper smaller than the size selected in the application. Use the same size paper as that selected in the application. If you cannot load paper of the correct size, use the reduction function to reduce the image, and then print. See the printer driver Help.

Problem	Causes and Solutions
<p>It takes a long time to complete a print job.</p>	<p>Photographs and other data intensive pages take a long time for the machine to process, so simply wait when printing such data.</p> <p>Changing the following settings with the printer driver may help speed up printing:</p> <ul style="list-style-type: none"> • PCL 6/5e Select the lowest value for [Resolution] on the [Print Quality] tab in the printer properties dialog box. • PostScript 3 Select the lowest value for [Resolution] on the [Print Quality] tab in the printer properties dialog box. Select [PostScript (optimize for speed)] for [PostScript output format:] on the [PostScript] tab in the printer properties dialog box. • RPCS™ Select the lowest value for [Resolution] on the [Image Adjustments] tab in the [Change User Settings...] dialog box on the [Print Quality] tab in the printer properties dialog box. Select [Fast] for [Document type] list on the [Print Quality] tab in the printer properties dialog box. <p>See the printer driver Help.</p> <p>The data is so large or complex that it takes time to process. If the Data In indicator is blinking, data is being processed. Simply wait until printing resumes.</p>
<p>It takes too much time to resume printing.</p>	<p>The data is so large or complex that it takes time to process. If the Data In indicator is blinking, data is being processed. Simply wait until printing resumes.</p> <p>The machine was in Energy Saver mode. To resume from Energy Saver mode, it has to warm up, and this takes time. To disable Energy Saver mode, select [Off] for Energy Saver 1 in the System Settings menu. See <i>General Settings Guide</i>.</p>
<p>Paper is not fed from the selected tray.</p>	<p>When you are using a Windows operating system, printer driver settings override those set using the display panel. Set the desired input tray using the printer driver.</p> <p>See the printer driver Help.</p>
<p>Optional components connected to the machine are not recognized when using Windows 95/98/Me, Windows 2000/XP, and Windows NT 4.0.</p>	<p>You have to configure the option setup in printer properties when bidirectional transmission is not enabled.</p> <p>See the printer driver Help.</p>
<p>Images are printed in the wrong orientation.</p>	<p>The feed orientation you selected and the feed orientation selected in the printer driver's option setup might not be the same. Set the machine's feed orientation and the printer driver's feed orientation accordingly.</p> <p>See the printer driver Help.</p>

Problem	Causes and Solutions
The printed image is different from the image on the computer's display.	With certain functions, such as enlargement and reduction, image layout might be different to that on the computer display.
	<p>You might have selected to replace True Type fonts with machine fonts in the printing process.</p> <p>To print an image similar to that of the computer display, make settings to print True Type fonts as an image.</p> <p>See the printer driver Help.</p>
No transmission when using 1394 interface connection	<p>Check using the following procedure:</p> <ol style="list-style-type: none"> ① Confirm the IEEE 1394 interface cable is connected securely. ② Restart the computer. If the error occurs even after executing the above operation, proceed to the following steps. ③ Unplug the IEEE 1394 interface cable connected to the computer. ④ Run the utility tool for the IEEE 1394 interface board, which is stored in the following path on the CD-ROM "Printer Drivers and Utilities": <code>\UTILITY\1394\</code> <p> Reference</p> <p>For more information about using the utility tool for IEEE 1394, see the README file in the same directory on the CD-ROM.</p> <ol style="list-style-type: none"> ⑤ Restart the computer.
Printing stops and a paper error is displayed if the custom size paper in the paper feed tray is specified when printing with the PostScript 3 printer driver.	<p>Follow the one of the procedures below:</p> <ul style="list-style-type: none"> • Press [Job Reset] on the display panel to stop printing. Place the custom size paper in the bypass tray, and then start printing. • Select the paper feed tray with custom size paper, and then press [Continue] to force printing.
When connecting the machine using USB 2.0, the first page of a print job that contains a large volume of data is printed, but the remaining pages are not.	<p>Check that USB Printing Support is installed on your computer.</p> <p> Reference</p> <p>See "Installing the Printer Driver Using USB", <i>Printer Reference 1</i>.</p>

 **Note**

- If the problem cannot be solved, contact your sales or service representative.

5. Printer Features

Reference

For more information about copier features and system settings, see *Copy Reference* and *General Settings Guide*.

Printer Features Menu

There are seven menu items in the Printer Features menu:

- Paper Input
- List/Test Print
- Maintenance
- System
- Host Interface
- PCL Menu
- PS Menu (optional)

You can select the functions in the following table:

Menu	Default
Paper Input See p.42 "Paper Input".	Bypass Paper Size
List/Test Print See p.42 "List/Test Print".	Config. Page
	Menu List
	PCL Config./ Font Page
	PS Config./ Font Page * ¹
Hex Dump	
Maintenance See p.45 "Maintenance".	Menu Protect

Menu	Default
System See p.46 "System".	Print Error Report
	Auto Continue
	Memory Overflow
	Job Separation *2
	Memory Usage
	Duplex
	Copies
	Edge Smoothing
	Toner Saving
	Printer Language
	Sub Paper Size
	Page Size
	Letterhead Setting
	Edge to Edge Print
Default Printer Language	
Host Interface See p.48 "Host Interface".	I/O Buffer
	I/O Timeout
PCL Menu See p.49 "PCL Menu".	Orientation
	Form Lines
	Font Source
	Font Number
	Point Size
	Font Pitch
	Symbol Set
	Courier Font
	Extend A4 Width
	Append CR to LF
	Resolution
PS Menu (optional) See p.50 "PS Menu".	Data Format
	Resolution

*1 Appears when the PostScript 3 unit (optional) is installed.

*2 Appears when the finisher (optional) is installed.

Adjusting Printer Features

Printer Features allows basic adjustment of operations when using the machine as a printer.

Although factory default settings are suitable for most printing jobs, Printer Features gives you access to a number of settings that control basic printer operations. Printer Features settings you make are retained even when you turn off the machine.

For more information about copier features and system settings, see *Copy Reference* and *General Settings Guide*.

1 Press the **[User Tools/Counter]** key on the control panel.

2 Press **[Printer Features]**.

3 Select the desired item by pressing the tab, and then change its settings.

 **Note**

- [OK]**: Press to make new settings and go back to previous menus.
- [Cancel]**: Press to return to a previous menu without changing any setting.

4 After changing Printer Features settings, press **[Exit]** to return to the User Tools/Counter menu.

 **Note**

- You can also exit from the User Tools/Counter menu by pressing the **[User Tools/Counter]** key.
- Changes made to functions remain in effect even if the machine is turned off.
- You can also exit from the Printer Features menu by pressing **[Exit]** in the main menu.

Printer Features Parameters

Paper Input

❖ Bypass Paper Size

The size of the paper set in the bypass tray.

🔍 Reference

For more information about paper sizes that can be set in the bypass tray, see *General Settings Guide*.

For information about setting paper in the bypass tray, see *Printer Reference 1*.

📝 Note

- Default:
 - Metric version: A4
 - Inch version: 11 × 8½

List/Test Print

❖ Config. Page

You can print the machine's current configuration values.

🔍 Reference

p.42 "Printing the configuration page"

❖ Menu List

You can print a Menu List showing the machine's function menus.

❖ PCL Config./ Font Page

You can print the current configuration of installed PCL fonts.

❖ PS Config./ Font Page

You can print the current configuration of installed PostScript fonts.

📝 Note

- This menu can be selected only when the optional PostScript 3 board is installed.

❖ Hex Dump

You can print the Hex Dump.

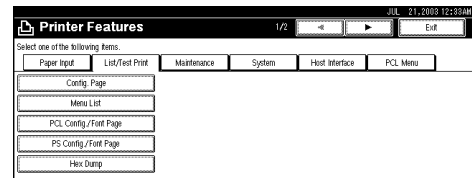
Printing the configuration page

1 Press the **[User Tools/Counter]** key on the control panel.

The User Tools/Counter menu appears.

2 Press **[Printer Features]**.

The Printer Features menu appears.



3 Press **[Config. Page]** on the **[List/Test Print]** tab.

The configuration page is printed.

Interpreting the configuration page

System Reference

❖ **Unit Number**

Displays the serial number assigned to the board by its manufacturer.

❖ **Total Memory**

Displays the total amount of memory (SDRAM) installed on the printer.

❖ **Firmware Version**

- **Firmware**
Displays the version number of the printer firmware.
- **System**
Displays the version number of the system firmware.
- **Engine**
Displays the version number of the printer engine.
- **Panel**
Displays the version number of the panel display.
- **NIB**
Displays the version number of the Network interface.

❖ **HDD: Font/ Macro Download**

Displays the capacity of the hard disk drive.

❖ **Controller Option**

This item(s) appears when the controller option(s) is installed.

❖ **Printer Language**

Displays the version number of the printer driver language.

❖ **Options**

Displays the optional trays installed.

Paper Input


Displays the settings made under the Paper Input menu.

Reference

p.42 "Paper Input"


System

Displays the settings made under the System menu.

 **Reference**
p.46 "System"


PCL Menu

Displays the settings you made under PCL Menu.

 **Reference**
p.49 "PCL Menu"

PS Menu


Displays the settings you made under PS Menu.

 **Reference**
p.50 "PS Menu"

Host Interface

Displays the settings you made under the Host Interface menu.

When DHCP is active on the network, the actual IP address, subnet mask and gateway address appear in parentheses on the configuration page.

 **Reference**
p.48 "Host Interface"

Interface Information

Displays the interface information.

Error Log

Displays the printer error log.

Maintenance

❖ Menu Protect

This procedure lets you protect menu settings from accidental change. It makes it impossible to change menu settings with normal procedures unless you perform the required key operations. In a network environment, only administrators can make changes to menu settings.

- Level 1
You can protect "Maintenance", "System", "Host Interface" and "PCL Menu".
- Level 2
You can protect "Paper Input", "Maintenance", "System", "Host Interface" and "PCL Menu".
- Off

Note

- Default: *Off*
- You can protect menu settings using a Web browser.

Setting Menu Protect

- 1** Press the **[User Tools/Counter]** key on the control panel.
The User Tools/Counter menu appears.
- 2** Press **[Printer Features]**.
The Printer Features menu appears.
- 3** Press **[Maintenance]**.
- 4** Press **[Menu Protect]**.
- 5** Enter an access code using the number keys, and then press **[OK]**.

- 6** Select a menu protect level, and then press **[OK]**.

- 7** Press **[Exit]**.

The User Tools/Counter menu appears.

- 8** Press **[Exit]**.

Note

- You can also exit the User Tools/Counter menu by pressing the **[User Tools/Counter]** key.

Canceling Menu Protect

- 1** Press the **[User Tools/Counter]** key on the control panel.

- 2** Press **[Printer Features]**.

- 3** Press **[Maintenance]**.

A screen for entering the access codes appears.

- 4** Enter an access code using the number keys, and then press **[OK]**.

- 5** Press **[Menu Protect]**.

- 6** Select **[Off]**, and then press **[OK]**.

- 7** Press **[Exit]**.

The User Tools/Counter menu appears.

- 8** Press **[Exit]**.

Note

- You can also exit the User Tools/Counter menu by pressing the **[User Tools/Counter]** key.

Temporarily canceling Menu Protect

When you select protected items in Printer Features, a screen for entering the access codes appears. When this happens, enter the correct access codes using the number keys, and then press **[OK]**. Menu Protect is then temporarily canceled.

Note

- If you enter the correct access codes, Menu Protect remains canceled while the Printer Features menu is displayed.

System

❖ Print Error Report

Select this to have an error report printed when a printer or memory error occurs.

- On
- Off

Note

- Default: *Off*

❖ Auto Continue

You can select this to enable Auto Continue. When it is On, printing continues after a system error occurs.

- Off
- 0 minute
- 1 minute
- 5 minutes
- 10 minutes
- 15 minutes

Note

- Default: *Off*

❖ Memory Overflow

Select this to have a memory overflow error report printed.

- Not Print
- Error Report

Note

- Default: *Not Print*

❖ Job Separation

You can enable Job Separation.

- On
- Off

Note

- Default: *Off*
- This menu appears only when the optional finisher is installed.

❖ Memory Usage

You can select the amount of memory used in Font Priority or Frame Priority, according to paper size or resolution.

- Font Priority
This setting uses memory for registering fonts.
- Frame Priority
This setting uses frame memory for high speed printing.

Note

- Default: *Frame Priority*

❖ Duplex

You can select to have print on both sides of each page.

- Off
- Short Edge Bind
- Long Edge Bind

Note

- Default: *Off*

❖ Copies

You can specify the number of print sets. This setting is disabled if the number of pages to print has been specified with the printer driver or another command.

- 1 to 999 by 1

Note

- Default: 1

❖ Edge Smoothing

Set this to enable Edge Smoothing.

- On
- Off

Note

- Default: *On*
- If Toner Saving is set to On, Edge Smoothing is ignored even if it is set to On.

❖ Toner Saving

Set this to enable Toner Saving.

- On
- Off

Note

- Default: *Off*

❖ Printer Language

Normally, the machine should be set to Auto. If the printer language cannot be detected in Auto, the language specified by Default Printer Language is selected.

- Auto
- PCL
- PS

Note

- Default: *Auto*
- PS appears only when the optional PostScript 3 board is installed.

❖ Sub Paper Size

You can enable the Auto Substitute Paper Size (A4↔LT) feature.

- Auto
- Off

Note

- Default: *Off*

❖ Page Size

You can select the default paper size.

- 11 × 17
- 8¹/₂ × 14
- 8¹/₂ × 11
- 5¹/₂ × 8¹/₂
- 7¹/₄ × 10¹/₂
- 8 × 13
- 8¹/₂ × 13
- 8¹/₄ × 13
- A3
- B4 JIS
- A4
- B5 JIS
- A5
- A6
- 8K
- 16K
- Custom Size

Note

- Default:
 - Metric version: A4
 - Inch version: 8¹/₂ × 11

❖ Letterhead Setting

You can rotate original images when printing.

When printing, original images are always rotated by 180 degrees. Therefore, output might not be as expected when printing onto letterhead or preprinted paper requiring orientation. Using this function, you can specify image rotation.

- Off
- Auto Detect
- On (Always)

Note

- Default: *Off*
- When set to Off, original images are rotated by 180 degrees.
- When set to Auto Detect, the machine detects a letterhead or preprinted paper automatically, and does not rotate them.
- When set to On (Always), the machine does not rotate.
- This function reduces printing speed.

❖ Edge to Edge Print

Select this to maximize the printable area by minimizing white space along the edges, to 0.04 inches (1 mm).

- Off
- On

Note

- Default: *Off*

❖ Default Printer Language

You can set the default printer language if the machine cannot find the printer language automatically.

- PCL
- PS

Note

- Default: *PCL*
- PS appears only when the optional PostScript 3 board is installed.

Host Interface

❖ I/O Buffer

You can set the size of the I/O Buffer. Normally it is not necessary to change this setting.

- 128 KB
- 256 KB
- 512 KB

Note

- Default: *128 KB*

❖ I/O Timeout

You can set how many seconds the machine should wait before ending a print job. If data from another port usually arrives in the middle of a print job, you should increase this timeout period.

- 10 seconds
- 15 seconds
- 20 seconds
- 25 seconds
- 60 seconds

Note

- Default: *15 seconds*

PCL Menu

❖ Orientation

You can set the page orientation.

- Portrait
- Landscape

Note

- Default: *Portrait*

❖ Form Lines

You can set the number of lines per page.

- 5 to 128 by 1

Note

- Default:
 - Metric version: 64
 - Inch version: 60

❖ Font Source

You can set the storage location of the default font.

- Resident
- RAM
- HDD

Note

- Default: *Resident*
- RAM and HDD can be selected only when fonts have been downloaded to the machine.

❖ Font Number

You can set the ID of the default font you want to use.

- 0 to 50 by 1

Note

- Default: 0

❖ Point Size

You can set the point size you want to use for the selected font.

- 4.00 to 999.75 by 0.25

Note

- Default: 12.00
- This setting is effective only with variable-space fonts.

❖ Font Pitch

You can set the number of characters per inch for the selected font.

- 0.44 to 99.99 by 0.01

Note

- Default: 10.00
- This setting is effective only with fixed-space fonts.

❖ Symbol Set

You can specify the set of print characters for the selected font. The available options are as follows:

Roman-8, ISO L1, ISO L2, ISO L5, PC-8, PC-8 D/N, PC-850, PC-852, PC8-TK, Win L1, Win L2, Win L5, Desktop, PS Text, VN Intl, VN US, MS Publ, Math-8, PS Math, VN Math, Pifont, Legal, ISO 4, ISO 6, ISO 11, ISO 15, ISO 17, ISO 21, ISO 60, ISO 69, Win 3.0

Note

- Default: *Roman-8*

❖ Courier Font

You can select a courier font type.

- Regular
- Dark

Note

- Default: *Regular*

❖ Extend A4 Width

You can extend the printing area width (when printing on A4 sheet with PCL).

- On
- Off

Note

- Default: *Off*
- When the setting is On, the width will be 8½ inches.

❖ Append CR to LF

When set to On, a carriage return will follow each line feed: CR=CR, LF=CR-LF, FF=CR-FF.

- Off
- On

Note

- Default: *Off*

❖ Resolution

You can set the print resolution in dots per inch.

- 300 dpi
- 600 dpi

Note

- Default: *600 dpi*

PS Menu

❖ Data Format

You can select a data format.

- Binary data
- TBCP

Limitation

- This setting is not effective when operating the machine with a parallel, USB, or EtherTalk connection.
- When operating the machine with a parallel or USB connection, if binary data is sent from the printer driver, the print job is canceled.
- When operating the machine with an Ethernet connection, the print job is canceled under the following conditions;
 - The printer driver data format is TBCP, and the data format selected on the display panel is Binary Data.
 - The printer driver data format is binary, and the data format selected on the display panel is TBCP.

Note

- Default: *Binary data*

❖ Resolution

You can set the print resolution in dots per inch.

- 300 dpi
- 600 dpi

Note

- Default: *600 dpi*

Finisher

You can collate or staple printed paper by installing the optional finisher. Make sure you read the following precautions when using the optional finisher:

Reference

For information about optional finishers, see *General Settings Guide*.

To use the staple function, see p.52 “Staple”.

- ❖ **Be sure to make settings for options installed on the machine in the printer drivers.**

Reference

To make settings for options in the printer drivers, see *Printer Reference 1*.

- ❖ **Be sure to set the paper size and paper orientation in the printer driver when using duplex printing, combine (layout), and staple functions.**

Reference

For Information about duplex printing and layout, see the printer driver Help.

To use the staple function, see p.52 “Staple” and the printer driver Help.

Note








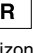
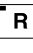
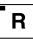
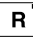
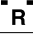



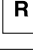
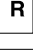

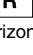

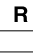


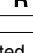
- Depending on the application, print settings may not be enabled and printed output may not be as expected.
- ❖ **When setting staple or collate in the printer driver, make sure that the Collate check box is cleared in the application's [Print] dialog box.**
If Collate is enabled in the application, printing will not be as intended.

Staple

With the optional finisher installed, sets can be stapled individually when printing multiple sets.

Staple Position

The specified staple position varies depending on paper size, type, quantity and feed orientation. The following table shows staple positions:

Paper Orientation on the Machine	Print Data Direction	Staple Position	500-Sheet finisher	1,000-Sheet finisher
	 Vertical	Top Left		
		Top Right	×	
		2 at Left	×	
		2 at Right	×	
	 Horizontal	Top Left		
		Top Right	×	
2 at Top		×		
	 Vertical	Top Left	×	
		Top Right		
		2 at Top	×	
	 Horizontal	Top Left	×	
		Top Right		
		2 at Left	×	
		2 at Right	×	

× : means that the staple position is not supported.

ZKQS010E

Reference

- For paper sizes and maximum numbers of sheets available for stapling, see “Specifications”, *General Settings Guide*.
- For printing methods, see the printer driver Help.
- The staple position will vary when using the PostScript 3 printer driver. For more information, see the PostScript 3 printer driver Help.







Stapling Precautions

Limitation

- Stapling can be done only with the optional finisher installed.
- Stapling cannot be done when paper is fed from the bypass tray.
- You cannot interrupt the current job with a job for another function requiring stapling or collating.

Note

- When the finisher is installed, and when an output tray that cannot output using the staple function has been selected, the paper will be output according to System Settings.
- If you cannot make staple settings even with the finisher installed, options may not be set correctly in the printer driver. Correct option settings in the printer driver. For details, see the printer driver Help.
- When duplex printing is selected, adjust staple positions to the binding orientation.
- When the finisher is being used for another function's job (for example, a copy job), printing will start after that job ends.
- When setting Staple in the printer driver settings, make sure that a collate option is not selected in the print settings of the application. If a collate option is selected in the application, printing will not be as intended.
- Be sure to set paper size and orientation in the printer driver when stapling.
 - Depending on the software you are using, print settings may not be saved and the printed result may not be as expected.
- When printing restarts after removing jammed paper, the printing position may be different, depending on the location of the jam.
 - If the paper jam occurred in the optional finisher, printing will restart from the top page of the data currently being printed, or from the page where the paper jam occurred.
 - If the paper jam occurred in the machine, printing will restart from the page where the paper jam occurred.
- Even if the paper jam occurred in the machine, the error will not be cleared unless the cover of the finisher is opened and closed.

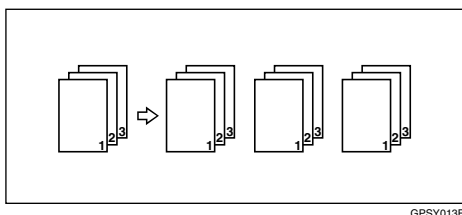
- ❑ Staple printing will be canceled under the following conditions:
 - If the number of staple jobs exceeds maximum. For information about the maximum number, see “Specifications”, *General Settings Guide*.
 - If a paper size that cannot be stapled is selected. For information about paper sizes that can be stapled, see “Specifications”, *General Settings Guide*.
 - If a paper type that cannot be stapled is selected.
The paper types that can be stapled are plain and recycled. Labels, thick paper and OHP transparencies cannot be stapled.
 - If positions other than those fixed for stapling are specified.
 - If there are inconsistencies between the orientation in duplex mode and the staple position.
 - If paper sizes are mixed when a different paper size is specified during a print job.
 - When staples have run out.
 - When feeding paper from the bypass tray.
 - When staples have run out and Auto Continue is set, printing will continue without stapling after the message has been displayed.
- ❑ Paper sizes that can be stapled when using the Mixed Size mode are as follows:
 - A3  and A4 
 - B4  and B5 
 - 11" × 17"  and 8 1/2" × 11" 

Collate

When printing multiple documents such as handouts for meetings, you can separate sets into order. This function is known as “Collate”. Collate stores data transmitted from a computer in memory. The following are the three types of collate:

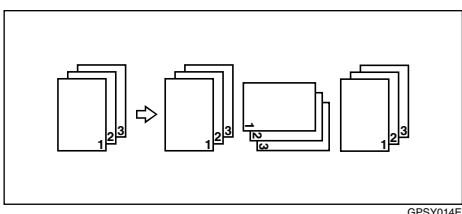
❖ Collate

Printed output is assembled as sets in sequential order.



❖ Rotating Collate

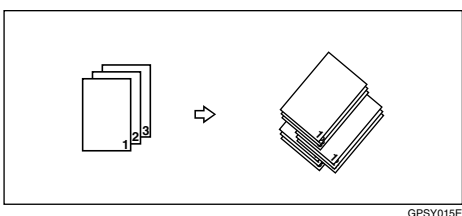
Every other print set is rotated by 90 degrees .



❖ Shift Collate

(The optional finisher is required for this function.)

The finisher shift tray moves backward or forward when a job or set is output, causing the next to shift, so you can separate them.



! Limitation

- The optional finisher is required for Shift Collate.
- Rotating Collate is not possible when feeding paper from the bypass tray.
- Shift Collate is not possible when printing on $8\frac{1}{2}'' \times 5\frac{1}{2}''$.
- If jobs containing pages of various sizes are set, Rotating Collate will not work.
- Rotating Collate and staple functions cannot be combined.

 **Note**

- You can set Collate in the RPCS™ printer driver.
 - If you cannot make Shift Collate even with the optional finisher installed, options may not be set up correctly in the printer driver. Correct the printer driver's option settings. For details, see the printer driver Help.
- If Auto Continue occurs on the first set, Collate will be canceled.
- If forced printing occurs on the first set, Collate will be canceled.
- If a document with mixed paper sizes or sizes larger than A4, 8¹/₂ "× 11" is set, it can only be collated, even if Rotating Collate has been selected.
- When Cover/Slip Sheet or Chaptering has been selected, Collate or Shift Collate will occur even if Rotating Collate has been selected.
- When Rotating Collate has been selected, printing speed will be slower than with other collate functions.
- When setting Collate in the printer driver settings, make sure that a collate option is not selected in the application's print settings. If a collate option is selected, printing will not be as intended.

 **Reference**

For information about paper sizes and the number of sets you can use Collate, Rotating Collate, and Shift Collate with in every option, see *Copy Reference*.

For printing methods, see the printer driver Help.

Spool Printing

Spool Printing allows print jobs transferred from a computer to be temporarily stored, and then prints them after they are transferred. This shortens printing time as it maximizes printer efficiency.

Important

- During Spool Printing, the hard disk is accessed and the Data-In indicator blinks. Turning off the computer or machine during Spool Printing can damage the hard disk. Also, if the computer or machine is turned off during Spool Printing, spooled jobs will be deleted. Therefore, do not turn the power to the computer or machine off during Spool Printing.

Limitation

- If data is sent to the machine using other protocols besides LPR, IPP or SMB, Spool Printing cannot be performed.
- Up to a maximum of 150 jobs at once can be spool printed.

Note

- Printing the first page with Spool Printing will be slow.
- The computer requires less print processing time when large amounts of data are spooled.
- Stored spool jobs can be viewed or deleted using a Web browser.

Viewing/Deleting spool jobs in a Web browser

Start the Web browser and enter the machine's IP address in the address bar. This displays the top page.

Example : `http://192.168.155.160`


(In this example, the IP address of the machine is 192.168.155.160)

Click **[Administrator Mode]**, and then click **[Spool Printing Job List]** to display the spool jobs. To delete, check the box next to the name of the file you want to delete. Enter the password ^{*1}, and then click **[Delete]**. For more information, see *Network Guide*.

^{*1} The default password is "password".


 **Setting Spool Printing**

Spool Printing can be set using telnet or a Web browser.

- Using a Web browser
Click [**Configuration**], and then click [**General**]. Set [**Spool Printing**] to [**Enable**].
See *Network Guide* or Help for more information.
 - Using telnet
Type in “spoolsw spool on” to set Spool Printing.
See *Network Guide* for more information about telnet.
- 

Covers

Using this function, you can insert cover and back sheets fed from a different tray to that of the main paper, and print on them.

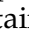
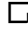
Reference

For printing methods, see the printer driver Help.

Limitation

- To use this function, Collate must be set. Rotating Collate cannot be set.

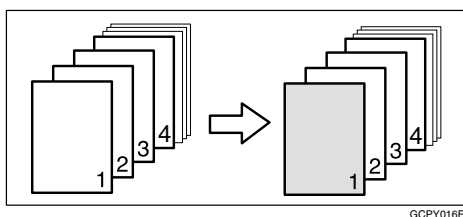
Note

- The cover sheets should be the same size and orientation as the body of the paper.
- If Auto Tray Select is set as the paper feed tray for the body paper, the paper will be delivered from a tray containing paper in the  orientation. Therefore, if the cover paper is set to  orientation, the orientation of cover and body will be different.

Cover Sheet

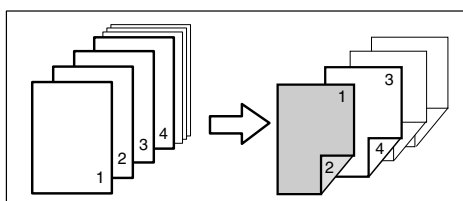
Prints the first page of the document on the sheet for the cover page.

- Print on one side
 - Prints on one side of the cover sheet only, even when duplex printing is selected.



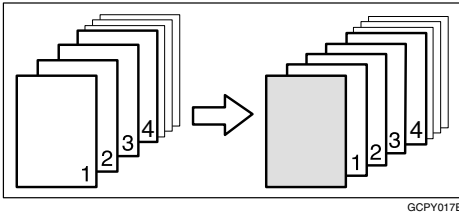
GCPY016E

- Print on both sides
 - Prints on both sides of the cover sheet when duplex printing is selected.



GCPY030E

- Blank

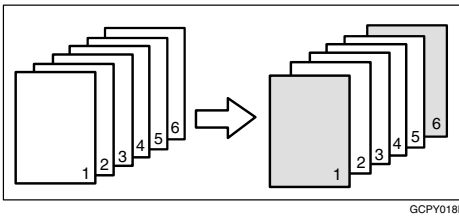


❖ **Front/Back covers**

Prints the first and last page of the document as the cover and back cover pages.

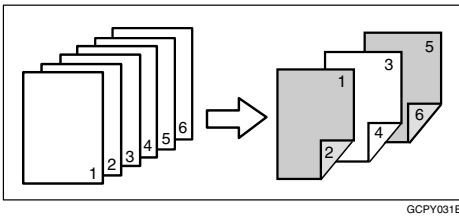
- Print on one side

Prints on one side of the cover sheets only, even when duplex printing is selected.

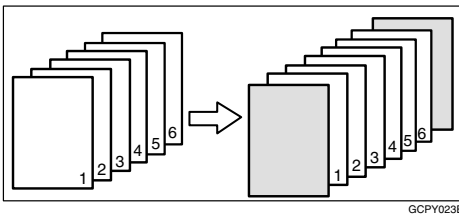


- Print on both sides

Prints on both sides of the cover sheets when duplex printing is selected.



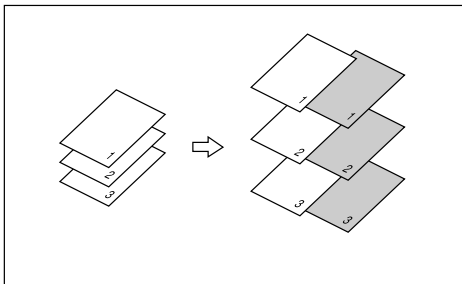
- Blank



Slip Sheets

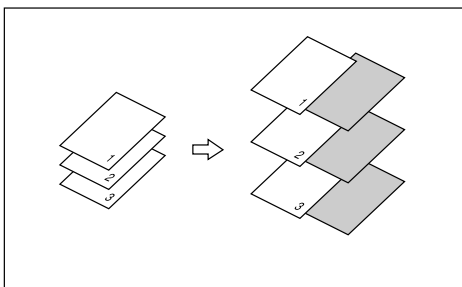
❖ Inserting a slip sheet between each page

- Print



GPAV019E

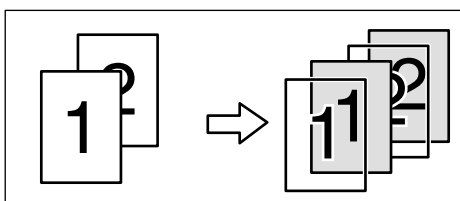
- Blank



GPAV020E

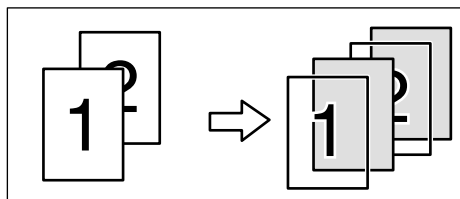
❖ Inserting a slip sheet between OHP transparencies

- Print



GCPY021E

- Blank



GCPY022E

 **Note**

- Collate cannot be set when using slip sheets.
- Slip sheets cannot be inserted while duplex printing.
- The slip sheet should be the same size and orientation as the main paper.
- The same paper feed tray cannot be set for the main paper and slip sheets.

Chaptering

A specified page is printed on the same side as the first page, like a book. Also, you can insert slip sheets before specified pages, and select whether or not to print onto slip sheets.

🚫 Limitation

- This function is available with the PCL and RPCS™ printer driver.

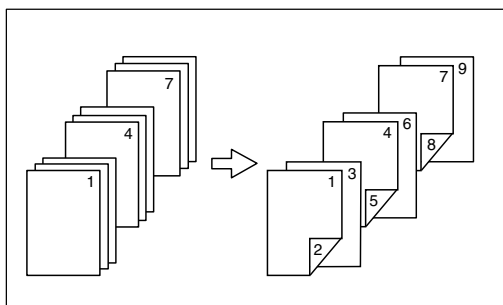
🔍 Reference

For printing methods, see the printer driver Help.

📝 Note

- Up to 20 pages can be specified as chapter front pages using the printer driver.

❖ No slip sheets



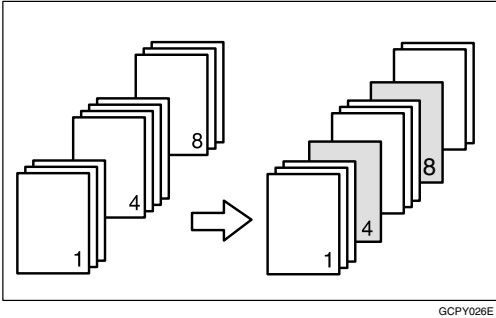
GCPY024E

📝 Note

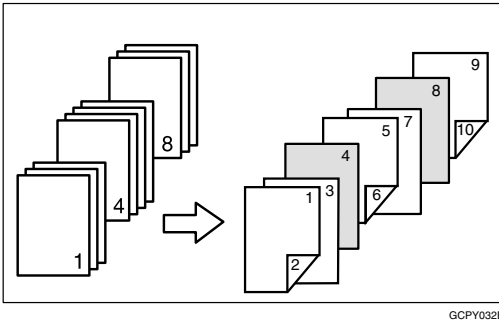
- This function is only valid with duplex printing.
- This function can be used together with combine (layout) printing.

❖ Inserting slip sheets

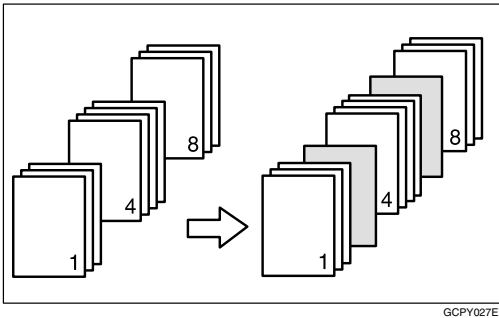
- Print
Prints on slip sheets. When duplex printing is selected, both sides of the slip sheets are printed onto.





- Print on front side only
Prints on the front side of slip sheets even if duplex printing is selected.



- Blank



Note

- The slip sheet should be the same size and orientation as the main paper.
- If Auto Tray Select is set as the paper feed tray for the main paper, paper will be delivered from a tray containing paper in the  orientation. Therefore, if the cover paper is set to the  orientation, the orientation of the cover and body paper will be different.
- The same paper feed tray cannot be set for the body of the document and the slip sheet.

User Defined Pages

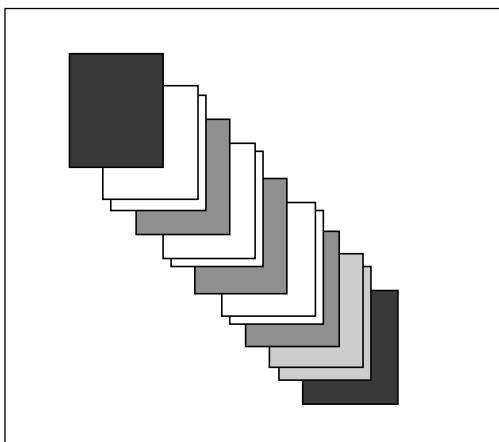
Using this function, you can specify the page numbers for each input tray.

Reference

For printing methods, see the printer driver Help.

Limitation

- This function is available with the PCL printer driver only.
- If **[Document Server]** is selected under **[Job Type]**, User Defined Page cannot be used.
- If **[User Defined Pages]** is selected under **[Paper]**, **[Layout:]** and **[Duplex:]** cannot be selected.



System Settings (Parallel Connection)

Interface Settings/Parallel Interface

❖ Parallel Timing

Specifies the timing for the parallel interface. Normally, you do not need to change this setting.

- ACK inside
- ACK outside
- STB down

Note

Default: *ACK outside*

❖ Parallel Communication Speed

Specifies the communication speed of the parallel interface. If the speed is too high, data may not be transferred smoothly. If this happens, change the setting to “Standard”.

- High speed
- Standard

Note

Default: *High speed*

❖ Selection Signal Status

Specifies the signal level of the parallel interface.

- High
- Low

Note

Default: *High*

❖ Input Prime

Specifies whether the prime signal is active or inactive when an input prime signal is sent. Normally, you do not need to change this setting.

- Effective
- Invalid

Note

Default: *Invalid*

❖ Bidirectional Communication

Specifies, for instance, how a printer connected to the parallel interface responds to a status request. If you experience problems using another manufacturer’s printer, set this to OFF.

Limitation

If set to OFF, asynchronous communication will not work.

- ON
- OFF

Note

Default: *ON*

❖ Signal Control

Specifies how to handle any errors that occur when printing from a computer or sending faxes. Normally, you do not need to change this setting.





- Job acceptance priority
- Printer priority
- Facsimile priority

Note

Default: *Job acceptance priority*

Specifications

This section contains the machine's electrical and hardware specifications, including information about its options.

Component	Specifications
Resolution	PCL 6 : 600 dpi PCL 5e: 300 dpi, 600 dpi RPCS™ : 200 dpi, 300 dpi, 600 dpi PostScript 3 : 300 dpi, 600 dpi
Printing speed	22 ppm/32 ppm (A4  , 8½" × 11"  plain paper)  Note <input type="checkbox"/> Printing speeds depend on the machine. Check which type of machine you have. See <i>General Settings Guide</i> .
Interface	Standard: <ul style="list-style-type: none"> IEEE 1284 parallel interface  Note <input type="checkbox"/> Use a standard 36-pin printer cable not longer than 3 meters (10 feet). <ul style="list-style-type: none"> Ethernet interface (100BASE-TX/10BASE-T) Option: <ul style="list-style-type: none"> IEEE 1394 interface IEEE 802.11b wireless LAN interface USB 2.0 interface Bluetooth™ interface
Network protocol	TCP/IP, IPX/SPX, NetBEUI *1, AppleTalk
Printer language	Standard: PCL 6, PCL 5e, RPCS™ Option: PostScript 3
Fonts	PCL 6/5e : Afga Monotype Font Manager 35 Intellifonts, 10 TrueType fonts, and 1 Bitmap font Font Manager available. PostScript 3 : 136 fonts (Type 2:24, Type 14:112)
Memory	192 MB
Hard disk	Storage capacity : 20 GB
Operating systems supported by this machine	Windows 95/98/Me Windows 2000 Windows XP Windows NT 4.0 Mac OS 8.6 to 9.2 Mac OS X
Network cable	100BASE-TX/10BASE-T shielded twisted-pair (STP, Category/Type5) cable.

*1 To use NetBEUI, use the SmartNetMonitor port.

Options

Limitation

- Only one optional interface board can be installed in the machine at a time. Therefore, the optional IEEE 1394 interface board, the optional 802.11b interface kit (wireless LAN board) and the optional USB 2.0 interface board cannot be installed concurrently.

IEEE 1394 Interface Board type 4510

❖ Transmission spec.:

IEEE 1394

❖ Interface:

IEEE std 1394-1995 compliant

IEEE std 1394a-2000 compliant

❖ Device class:

SCSI print (Windows 2000, Windows XP)

IP over 1394 (Windows Me, Windows XP)

❖ Protocol:

SBP-2 (SCSI print)

TCP/IP (IP over 1394)

❖ Interface connector:

IEEE 1394 (6 pin × 2)

❖ Required cable:

1394 interface cable (6 pin × 4 pin, 6 pin × 6 pin)

Important

You cannot plug devices together to create loops.

Do not use cable that is more than 4.5 meters in length.

❖ Data transfer speed:

Maximum 400 Mbps

❖ Connectable number of devices on a bus:

Maximum 63

❖ Allowed cable hops on a bus:

Maximum 16

❖ Power supply:

Non external power supply

Cable Power repeated (IEEE 1394a-2000 compliant)

IEEE 802.11b Interface Kit Type B

❖ **Transmission spec.:**

Based on IEEE 802.11b (wireless LAN)

❖ **Protocol:**

TCP/IP, NetBEUI, IPX/SPX, AppleTalk

Note

SmartNetMonitor and Web browser are supported.

❖ **Data transfer speed:**

Auto select from below speed

1Mbps, 2Mbps, 5.5Mbps, 11Mbps

❖ **Frequency range:**

- Inch version:
2400-2497 MHz (1-11 channels)
- Metric version:
2400-2497 MHz (1-13 channels)

❖ **Transmittable distance:**

1Mbps 400 m ^{*1}

2Mbps 270 m ^{*1}

5.5Mbps 200 m ^{*1}

11Mbps 140 m ^{*1}

^{*1} These figures are a guideline for outdoor use. In general, the transmittable distance indoors is 10-100 m, depending on environment.

❖ **Transmission mode:**

802.11 ad hoc, ad hoc, and infrastructure mode

USB2.0 Interface Board Type A

❖ **Transmission spec:**

Based on USB 2.0

❖ **Data transfer speed:**

High Speed: 480 Mbps

Full Speed: 12 Mbps

❖ **Supported operating system:**

Windows 98 SE/Me, Windows 2000/XP, Mac OS 9.x, Mac OS X Classic

 **Note**

- This USB 2.0 interface board is compatible with devices that support USB 1.1.
- For Windows 98 SE/Me, be sure to install USB Printing Support included on the CD-ROM that comes with this machine. When USB 2.0 is used under Windows 98 SE/Me, only a speed equal to that of USB 1.1 is possible.
- Macintosh supports only the standard USB 1.1 port.

PostScript 3 Unit Type 2027

 **Reference**

PostScript 3 Unit Type 2027 Operating Instructions Supplement

BlueTooth Unit Type 2045

This Bluetooth interface unit does not support BIP.

 **Reference**

See the manual that comes with optional Bluetooth interface unit.

INDEX

C

- Canceling a job
 - Macintosh*, 11
 - Windows*, 10
- Chaptering, 63
- Collate, 55
- Configuration page, 42
- Control panel
 - locked print*, 15
 - printer features, adjusting*, 39
 - sample print*, 15
- Covers, 59

D

- Data In indicator, 32, 36
- Display panel
 - error messages*, 25
- Document Server, 13

E

- Error messages, 25

F

- Finisher, 51
- Fonts, 67

H

- Hard disk, 67
- Host Interface, 48

I

- IEEE 1394 Interface Board type 4510, 68
- IEEE 802.11b Interface Kit Type B, 69
- Interface, 67

L

- List/Test Print, 42
- Locked print, 19
 - deleting*, 20

M

- Macintosh
 - canceling a job*, 11
 - setting up, printer driver*, 9
- Maintenance, 45
- Memory, 67

N

- Network Cable, 67
- Network protocol, 67

O

- Operating system, 67
- Options, 68

P

- Paper Input, 42
- PCL menu, 49
- PostScript 3 Unit Type 2027, 70
- Printer driver
 - Printer properties, Windows 2000/XP*, 6
 - Printer properties, Windows 95/98/Me*, 5
 - Printer properties, Windows NT 4.0*, 7
 - setting up, Macintosh*, 9
- Printer features
 - adjusting*, 41
 - menu*, 39
 - parameters*, 42
- Printer Language, 67
- Printing speed, 67

R

- Resolution, 67

S

- Sample print, 15
 - deleting*, 17
- Slip Sheets, 61
- Specifications, 67
- Spool printing, 57
- Staple, 52
- System, 46

T

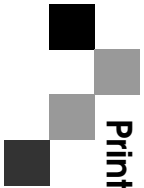
- Troubleshooting, 25
 - error messages*, 25
 - machine does not print*, 30
 - other printing problems*, 34
 - status messages*, 25

U

- USB2.0 Interface Board Type A, 69

W

- Windows
 - canceling a job*, 10
- Windows 2000/XP
 - printer properties, printer driver*, 6
- Windows 95/98/Me
 - printer properties, printer driver*, 5
- Windows NT 4.0
 - printer properties, printer driver*, 7



Printer/Scanner Unit Type 2027 Operating Instructions Printer Reference 2