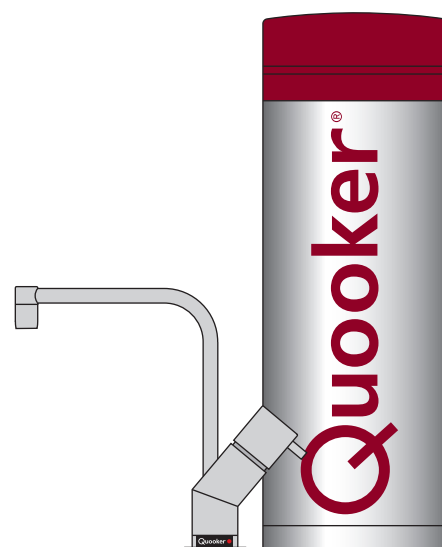


# Installation guide PRO3-VAQ B

Before installing read this guide first



# Introduction

## The operation of the Quooker VAQ B

The Quooker system consists of a vacuum-insulated tank, which is connected to the cold water supply under the sink and to the Nordic boiling-water tap or Fusion tap. Both boiling water and mixed water can be drawn off from the Fusion tap.

Inside the tank the water is heated electrically to approx. 110°C and is kept at this temperature. The Quooker PRO3-VAQ B has a capacity of 3 litres. Before the water leaves the tank it is purified by the HiTAC® water filter. (High Temperature Activated Carbon)

The Nordic boiling-water tap and the Fusion tap are fitted with a childproof push-and-turn handle (see 'Tips for use'), which is clearly recognisable by its industrial ribbing. When the tap handle is touched the underside lights up red to alert the user that it is a boiling-water tap. The Nordic boiling-water tap is height adjustable to guarantee safe use. Both it and the Fusion tap are well insulated. Despite all the safety precautions incorporated in the product, users of the Quooker system must bear in mind the general hazards inherent in the use of boiling water. Never allow children to use the water tap unsupervised and refer people who are unfamiliar with the device to the usage instructions.

## Installation, maintenance and warranty

Installing the Quooker requires connections to the water supply pipe and the electrical system. The Quooker is supplied with a handy connection kit (including the required Quooker inlet valve) for simple installation. For optimally purified Quooker water, we recommend changing the HiTAC® filter cartridge every 5 years. If necessary, the tank can be descaled. In areas with hard water this should be performed more regularly.

You must not connect the Quooker to a deionised water device or to a water softener that reduces the pH value.

The warranty period is two years, according to our General Terms of Business.

## Technical Specifications

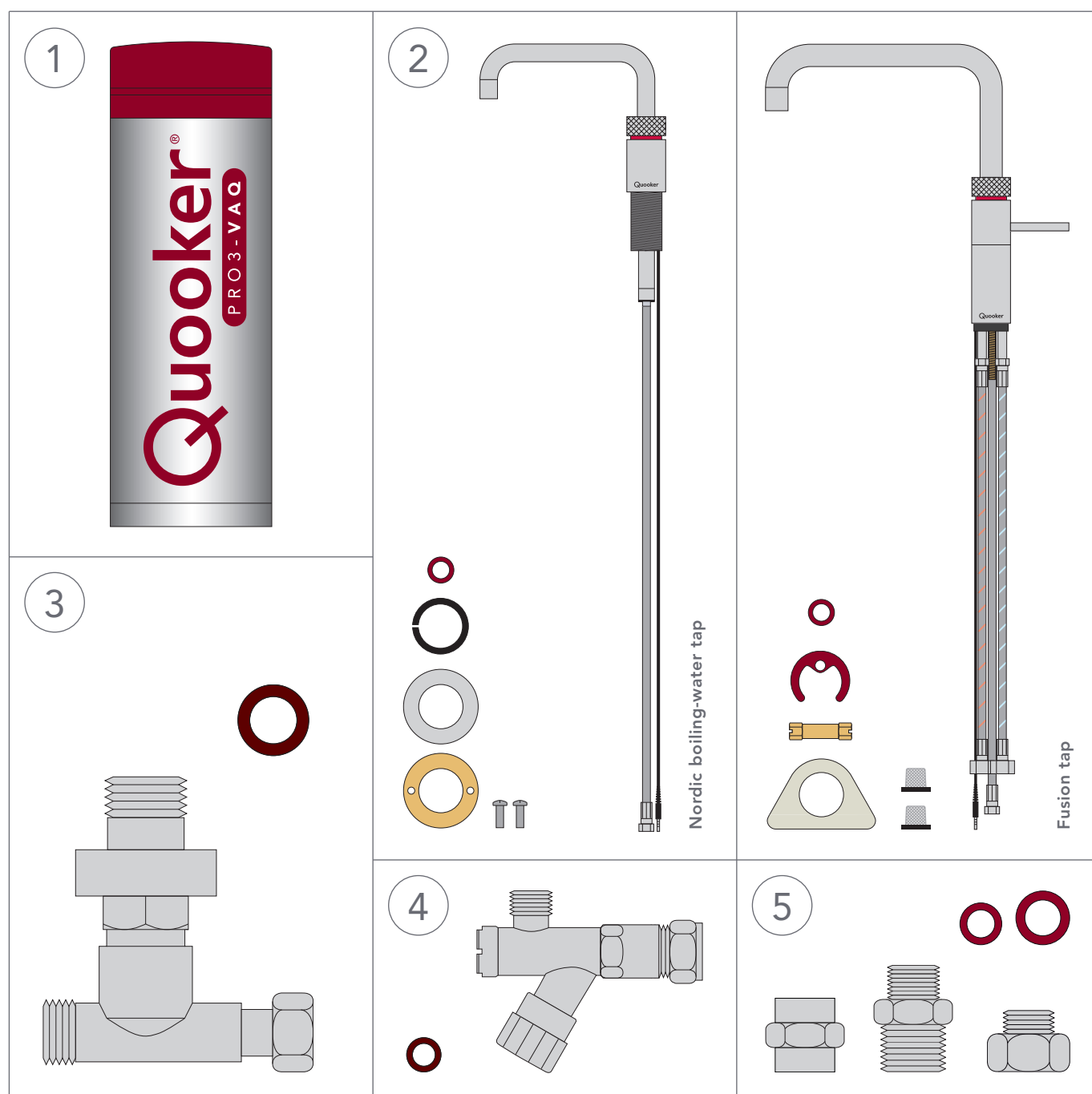
Tank	PRO3-VAQ B
Voltage	230 V
Wattage	1600 W
Capacity	3 litres
Heating-up time*	10 minutes
Standby power consumption	10 W
Tank height	44 cm
Tank diameter	15 cm
Min. mains pressure	200 kPa (2 bar)
Max. mains pressure	600 kPa (6 bar)
Max. working pressure	800 kPa (8 bar)
Mounting bracket optional	yes
Safety features	- maximum temperature fuse - pressure relief valve 800 kPa (8 bar)
Water shut-off valve	electric
HiTAC® water filter	High Temperature Activated Carbon

\*These are average values.

Tap	Nordic boiling-water tap	Fusion and mixer tap
Tap hole size	32 mm	35 mm
Recomm. temp. hot water	-	60°C
Tap base plate optional	yes	yes

# Contents of the pack

1. PRO3-VAQ B tank
2. Nordic boiling-water tap, packing ring, centring ring, steel ring, brass sink nut and two screws  
or Fusion tap, packing ring, brass fixing plate, fixing nut, white tap support (for thin work tops) and two inlet hose screens
3. Quooker inlet valve with packing ring
4. Angle stopcock with filter and packing ring
5. Inlet couplings and packing rings
  - 'Tips for use'

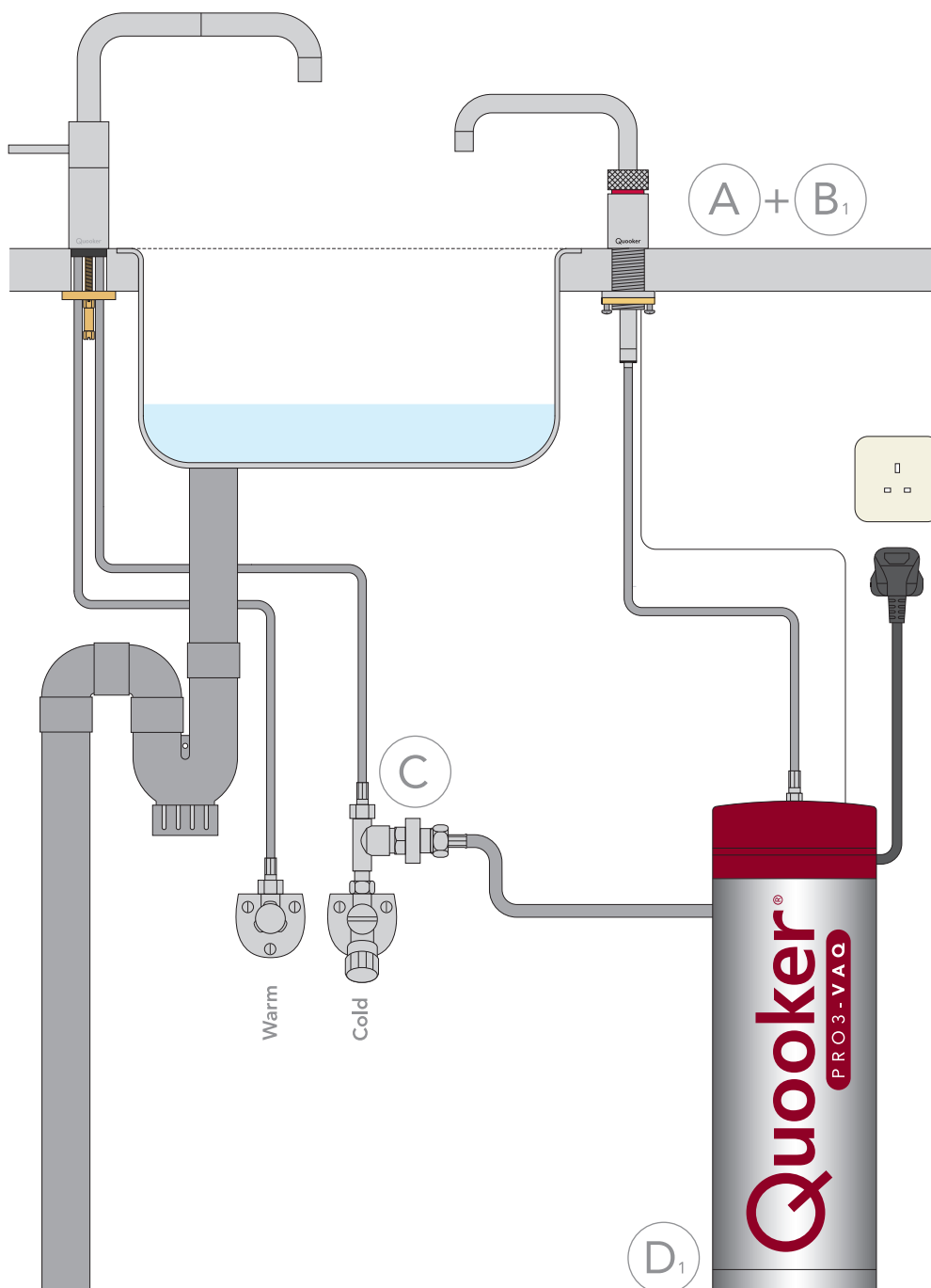


# Overview of Nordic tap installation

It's recommended that you install the Quooker in the following order:

- A. Drilling hole
- B1. Fitting Nordic tap
- C. Connecting water
- D1. Connecting tank to Nordic tap

NOTE: Please bear in mind that the tank, inlet valve and socket must remain easily accessible for servicing. For an overview of the Fusion tap installation please refer to the next page.

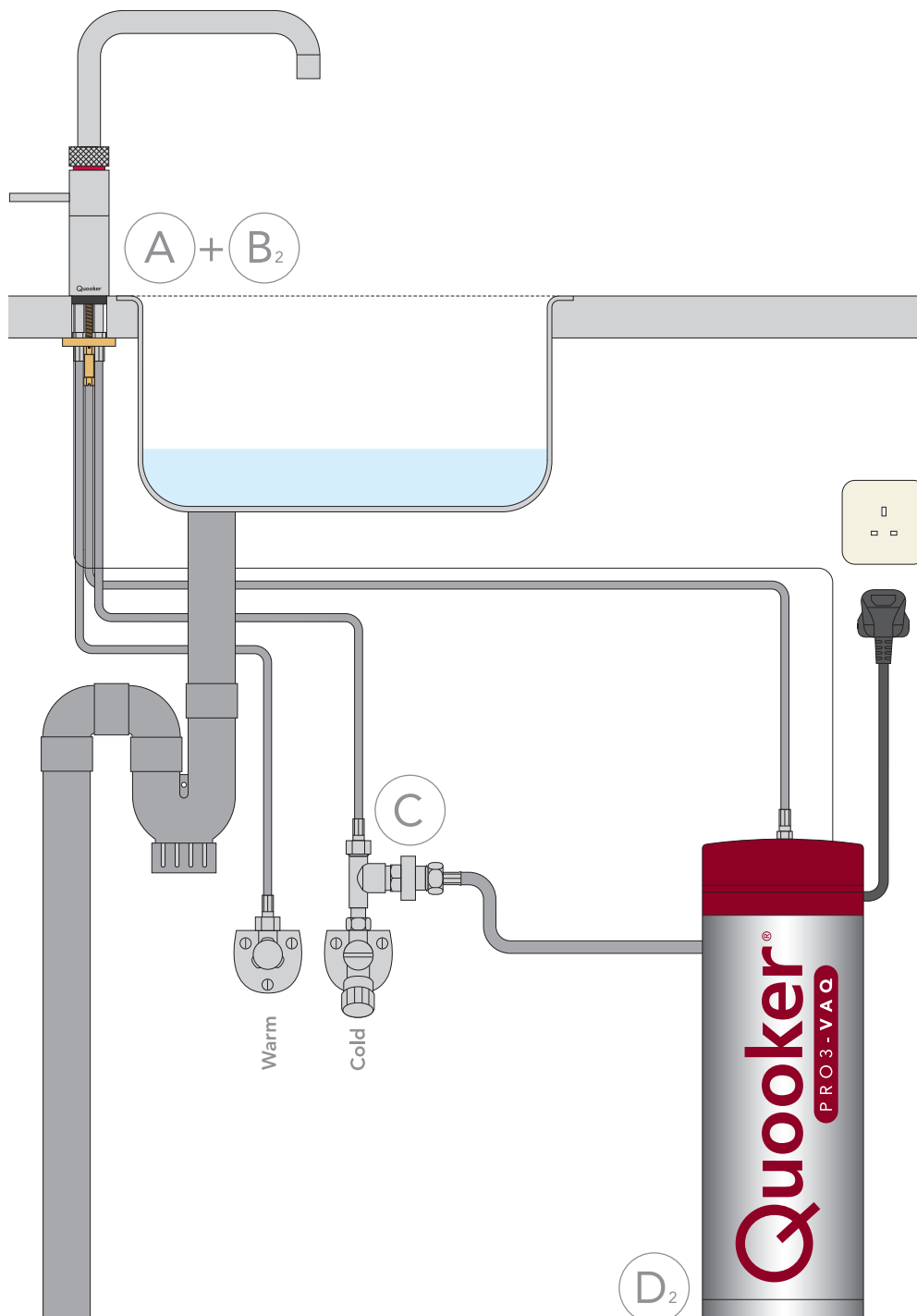


# Overview of Fusion tap installation

It's recommended that you install the Quooker in the following order:

- A. Drilling hole
- B2. Fitting Fusion tap
- C. Connecting water
- D2. Connecting tank to Fusion tap

NOTE: Please bear in mind that the tank, inlet valve and socket must remain easily accessible for servicing.



# A

## Drilling hole

- The tap hole for the Nordic boiling-water tap should be 32 mm in diameter. The Fusion tap hole should be 35 mm in diameter.
- For drilling the hole for the Fusion tap, see step 3 below.
- The Nordic boiling-water tap should ideally be positioned at the corner of the sink to enable use above the sink or the work top.
- It must be possible to move the spout of the Nordic boiling-water tap freely up and down. When the spout is in its lowest position it projects ca. 25 cm below the work top. Bear this in mind when fitting the inlet combination, sockets and the like.
- The Nordic boiling-water tap has a reach of 16 cm from the centre of the tap hole – keep this in mind when choosing the tap position.

### 1 Select position boiling-water tap

Select a suitable position for the Nordic boiling-water tap based on the type of sink and position of the mixer tap.

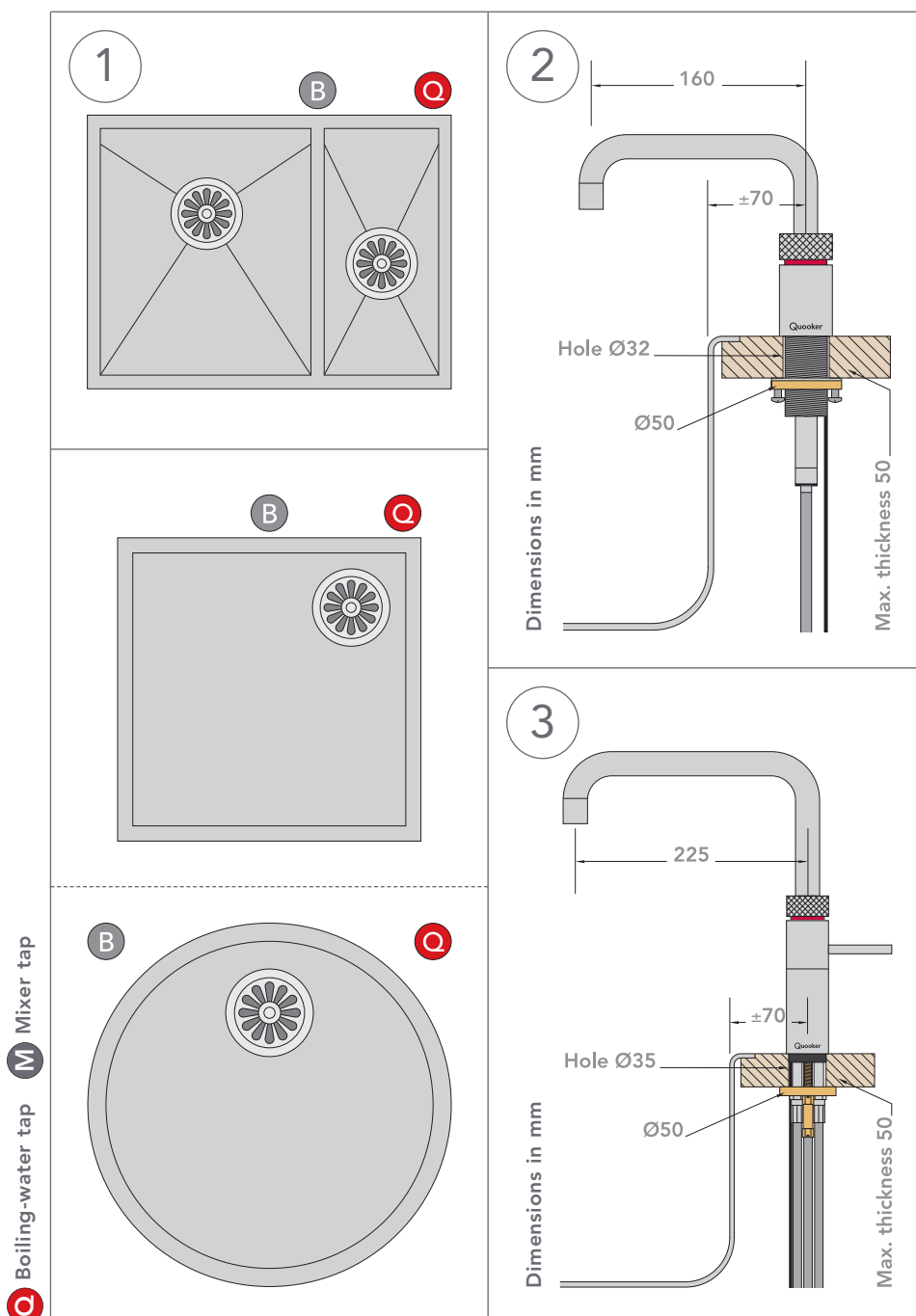
### 2 Drilling hole for boiling-water tap

Using the correct drill bit, drill a hole of 32 mm through the work top for the Nordic boiling-water tap.

NOTE: For the Nordic mixer tap please refer to the separate guide. In the case of a hole of 35 mm or larger, use the centring ring provided.

### 3 Drilling hole for Fusion tap

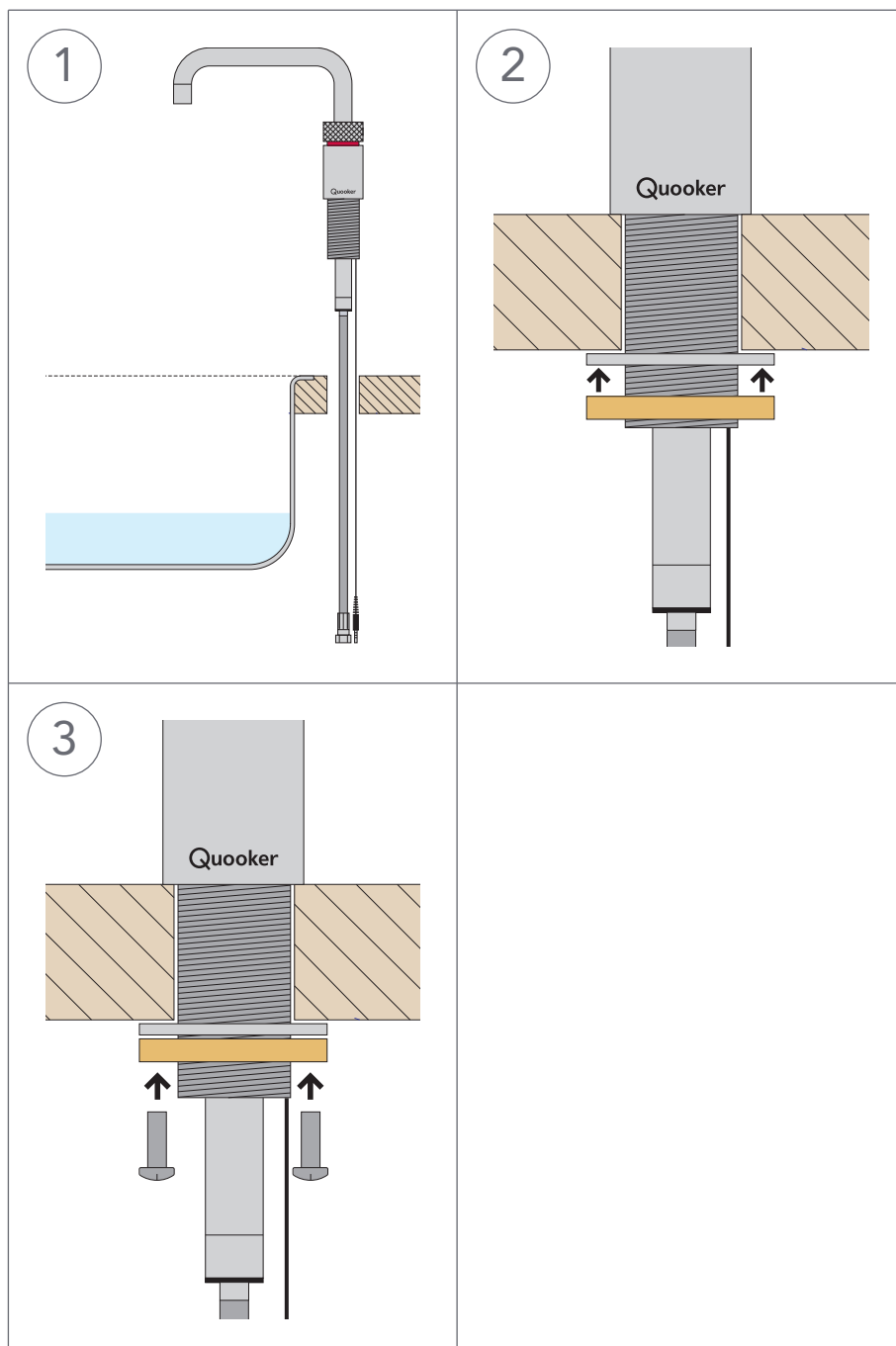
Select a suitable position for the Fusion tap. Using the correct drill bit, drill a hole of 35 mm through the work top.



# B<sub>1</sub>

## Fitting Nordic tap

- The total length of the hose between the boiling-water tap and tank is only 70 cm. The tank must therefore be fitted close to the tap. Extension hoses are available in different lengths but are not normally required.
- The small fibre washers supplied with the tap rings are not required yet at this point. One will be used for connecting the tap and tank hose (see section E), the second one is a spare.



### 1 Tap through work top

Push the tap through the hole in the work top. Use the black ring (supplied with the tap rings) when the tap hole is bigger than 35 mm to center the tap.

### 2 Securing the tap

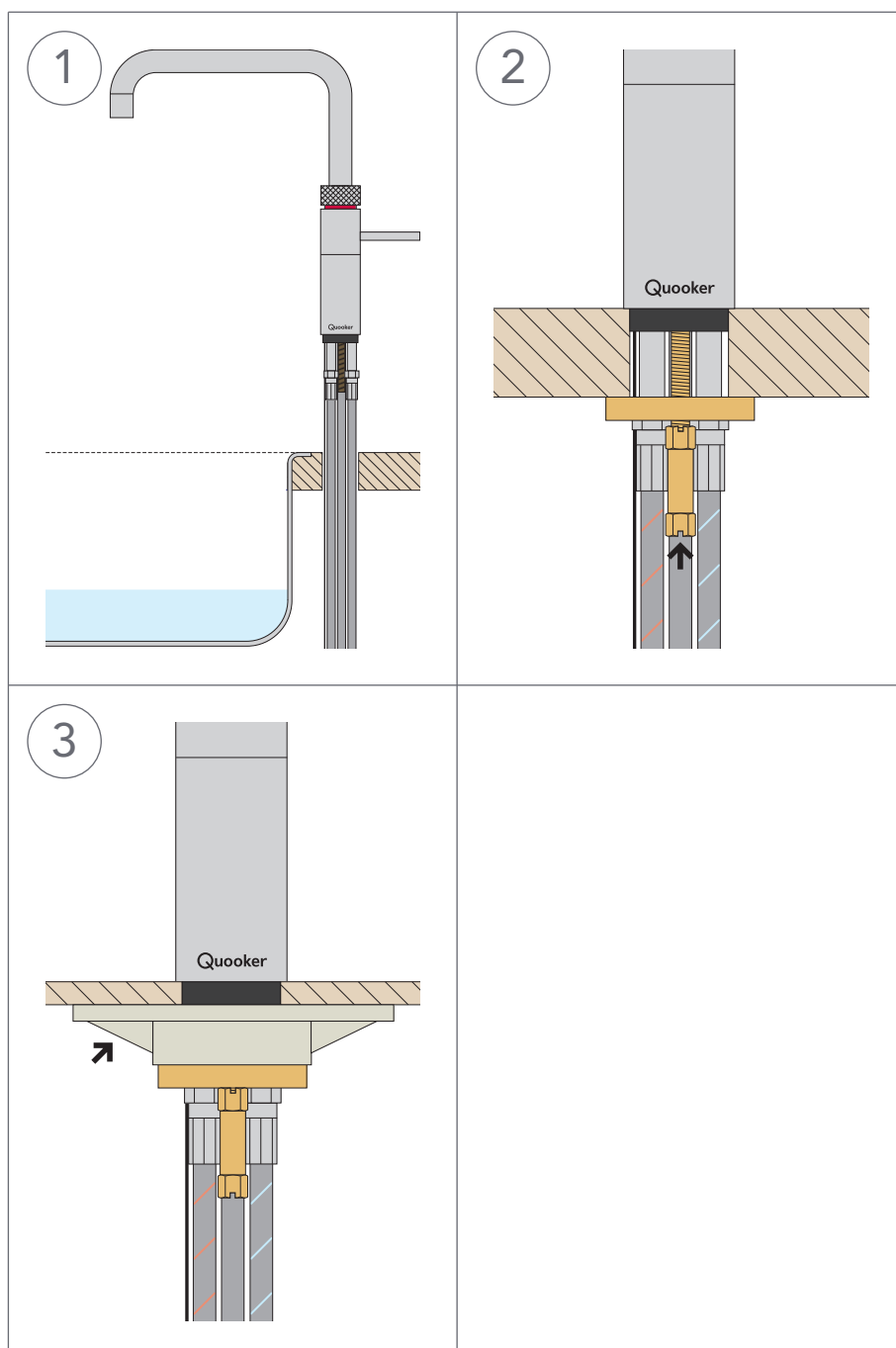
Set the tap to the desired position and secure it with the metal ring and screw ring supplied.

### 3 Securing tap screws

Tighten the screws in the screw ring.



# B<sub>2</sub> Fitting Fusion tap



## 1 Tap through work top

Push the tap through the hole in the work top.

## 2 Securing tap

Position the brass fixing plate around the hoses. Screw the fixing nut onto the tap thread. Adjust the position of the tap to ensure that the Quooker logo is facing the user. When the handle is in the cold position, it will be parallel to the edge of the work top. Tighten the fixing nut with a pipe wrench, socket wrench or spanner.

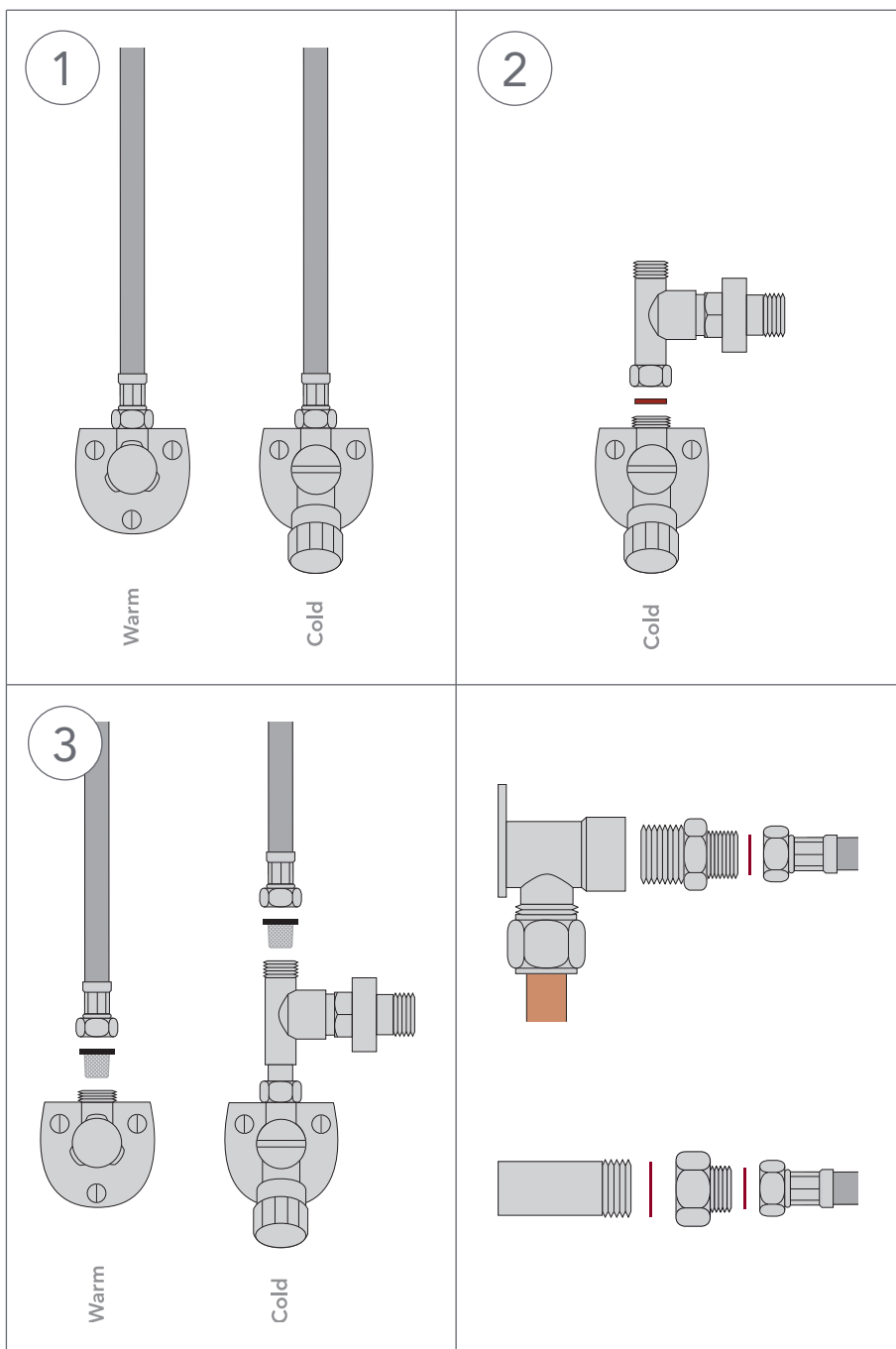
## 3 Fitting to thin work top

When fitting to a thin work top, use the white tap support underneath the brass fixing plate.

# C

## Connecting water

- The Quooker operates under mains water pressure and must always be fitted to the water pipe with the supplied inlet valve.
- The Nordic boiling-water tap or the Fusion tap must be installed according to the locally applicable regulations.



### 1 Shut off water

Before installation, shut off the angle stopcock or water supply to the main water tap. If necessary, fit supplied angle stopcock.

### 2 Connect inlet valve

Connect the inlet valve to the angle stopcock with the fibre washer.

### 3 Connect hot and cold water hose

Connect the hot water hose with the water filter to the angle stopcock.

Connect the cold water hose with the hose filter to the inlet valve.

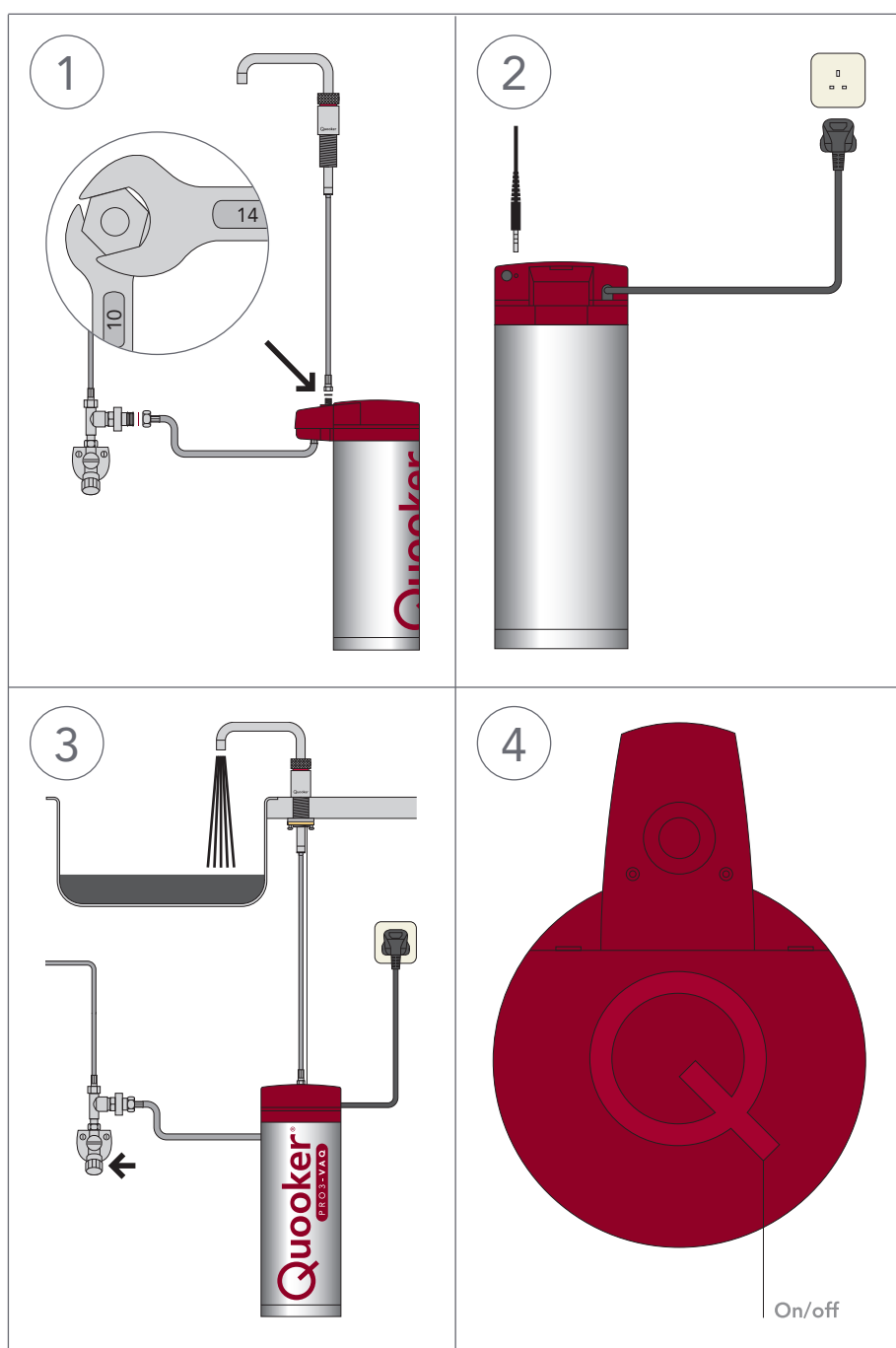
### If necessary

If only a G 1/2" connection is present, use one of the G 1/2" couplings with the supplied packing rings.

# D<sub>1</sub>

## Connecting tank to Nordic tap

- The Quooker tank is supplied with a UK 3 pin plug and requires a standard 13 amp earthed socket.
- If the mains lead is damaged, it must be replaced by the manufacturer, their agent or a qualified technician.
- The Nordic boiling-water tap is equipped with a light ring that shows whether the heating element is in operation or not. When touched the ring lights up to draw attention to the fact that boiling water can be released.
- The 'Q' on the lid is the on/off switch.



### 1 Connecting tank and tap

Position the tank and connect to the inlet valve using the washer provided. Using size 10 and 14 socket spanners, connect tap hose to fitting at the top of the tank.

### 2 Electrical connection

Insert the LED cable into the relevant opening. Connect the tank to an earthed socket. Do not switch on until the tank is filled with water.

### 3 Filling tank

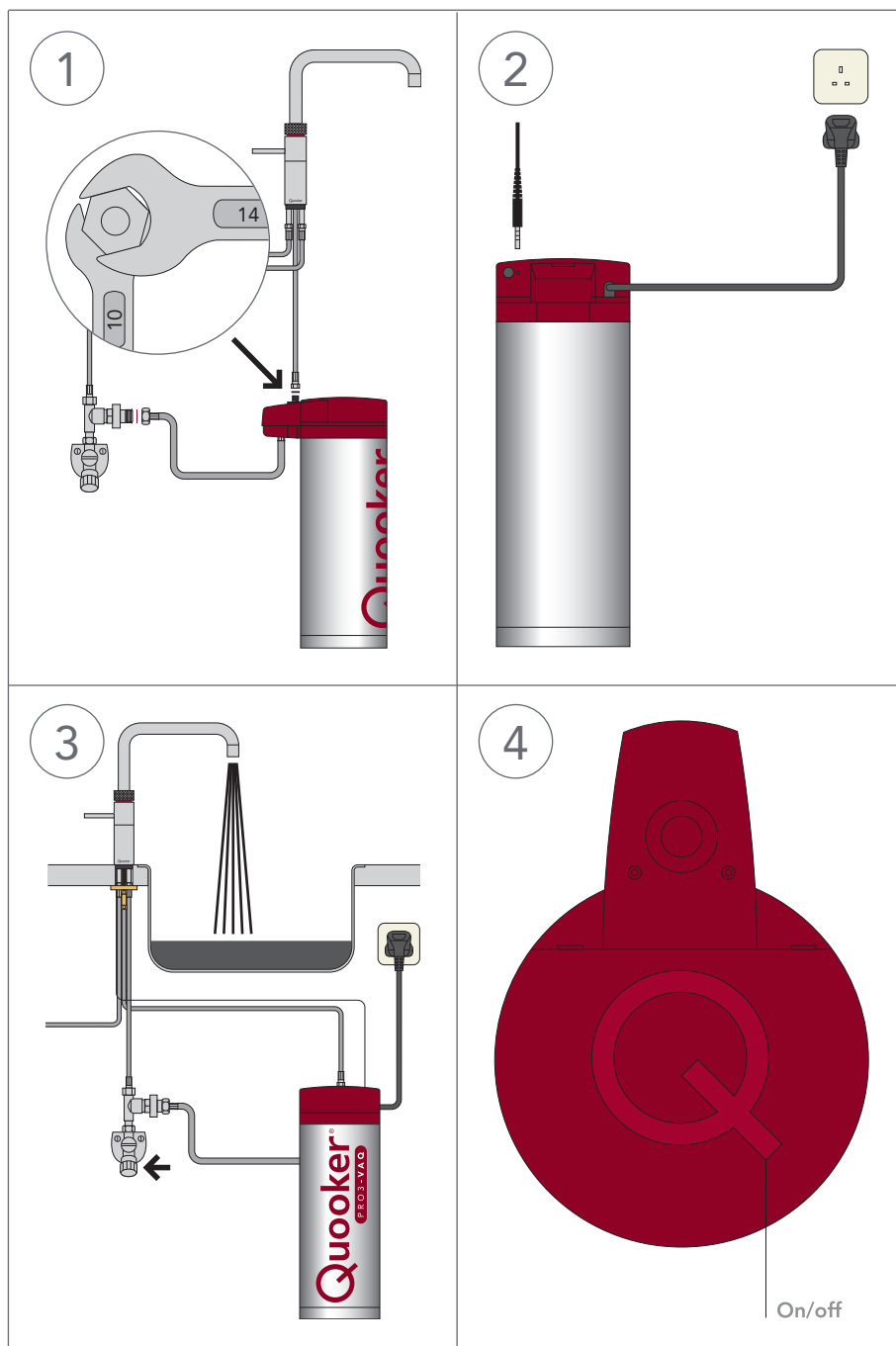
Open Nordic tap and angle stopcock. Check for leaks. Rinse Quooker for a few minutes, until the water is clear. The initial black colouring is activated carbon from the filter and completely harmless.

### 4 Switching on

Switch the tank on. After the Quooker has heated up, the entire content of boiling water must be flushed out once before use.

# D<sub>2</sub> Connecting tank to Fusion tap

- The Quooker tank is supplied with a UK 3 pin plug and requires a standard 13 amp earthed socket.
- If the mains lead is damaged, it must be replaced by the manufacturer, their agent or a qualified technician.
- The Fusion tap is equipped with a light ring that shows whether the heating element is in operation or not. When touched the ring lights up to draw attention to the fact that boiling water can be released.
- The 'Q' on the lid is the on/off switch.



## 1 Connecting tank and tap

Position the tank and connect to the inlet valve using the washer provided. Using size 10 and 14 socket spanners, connect tap hose to fitting at the top of the tank.

## 2 Electrical connection

Insert the LED cable into the relevant opening. Connect the tank to an earthed socket. Do not switch on until the tank is filled with water.

## 3 Filling tank

Press boiling-water button. Open main tap or angle stopcock. Check for leaks. Rinse Quooker for a few minutes, until the water is clear. The initial black colouring is activated carbon from the filter and completely harmless.

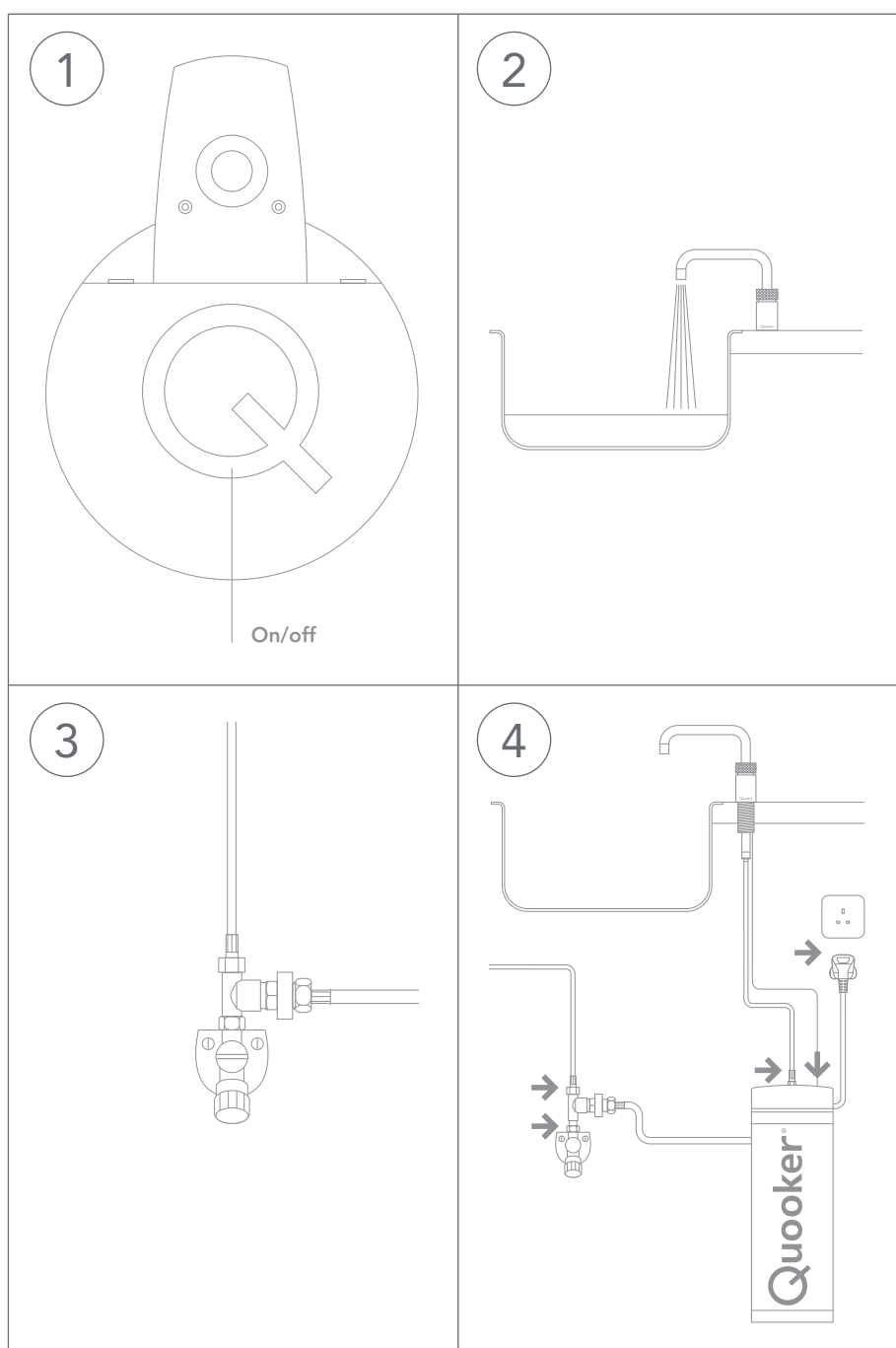
## 4 Switching on

Switch the Quooker on. After it has heated up, the entire content of boiling water must be flushed out once before use.

# E

## Disconnecting tank

- In case of service



### 1 Switching off

Switch the Quooker off using the on/off switch on top of the lid. Leave the plug in the socket.

### 2 Draining

Open the boiling-water tap and leave the water running until it is cold.

### 3 Isolating

Shut off the main water tap or the angle stopcock for cold water. Check that the Quooker has depressurised by opening the tap again.

### 4 Disconnecting

Unplug LED cable from lid. Release the hose connections and pull the plug out of the socket. Remove inlet combination and reconnect the cold water hose to the angle stopcock.

## Declaration of conformity

Quooker B.V., Staalstraat 13, 2984 AJ Ridderkerk (The Netherlands) herewith declares, on our own responsibility, that the products Quooker PRO3-VAQ B and PRO7-VAQ E are in accordance with the conditions of the following directives:

- 2006/95/EC Low voltage Directive
- 2004/108/EC Electromagnetic Compatibility Directive
- 97/23/EG Pressure Equipment Directive

And are in conformity with the following standards:

EN60335-1:2002 + A1:2004 + A11:2004 + A2:2006 + A12:2006 + A13:2008 + A14:2010 + A15:2011

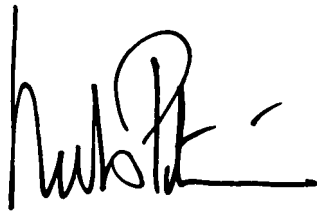
EN60335-2-21:2003 + A1:2005 + A2:2008 + A12:2012

EN60335-2-15:2002 + A1:2005 + A2:2008 + A11:20012 (partly).

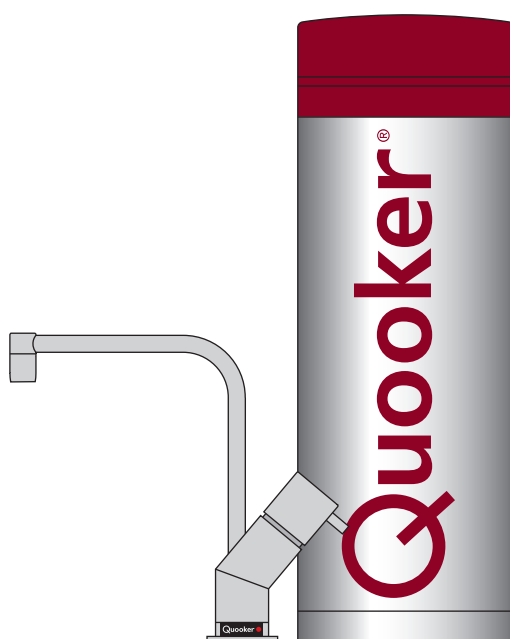
EN62233:2008 (Electromagnetic Fields)

The system should not be operated by persons (including children) with diminished mental, physical and sensory capacity.

The Netherlands, Ridderkerk, 28/11/2014

A handwritten signature in black ink, appearing to read 'Niels Peteri', with a stylized flourish at the end.

Niels Peteri, Director



[www.quooker.ae](http://www.quooker.ae)