

MASSCOOL

High Definition Media Home Theatre MP-1372RS USER MANUAL



Table of Contents

1.	Before you get started	3
1.1	Safety Instruction	3
1.2	Specification	4
1.3	Package Contents	6
2	Easy Installation Guide.....	7
2.1	Front / Back Panel	7
3	Using Media Player	13
3.1	Remote Control Introduction.....	13
3.2	Getting Started.....	14
3.2.1	Connect Media Player to your TV	14
3.2.2	Initiate Media Player	14
3.2.3	Setup.....	15
3.2.4	Browser & Play	21
4.	Transcoding Software	29
4.1	Install and run under Transcode Server	29
4.2	Adding Share Folders on PC	30
4.3.	The ways connect to File Sharing folders and BT download management	31
4.3.1	Set up the media player	32
4.3.2	Connect to File Sharing Folder.....	32
4.3.3	Connect to BT Download Management	32
4.3.4	Account Management	36

1.Before you get started

1.1 Safety Instruction

1. Always unplug the power cable before inserting Hard Drive.
2. A power supply with a different voltage will damage and make void of this product warranty.
3. Keep this equipment away from humidity or any type of moisture.
4. DO NOT drop or shake the device.
5. DO NOT press or put any weight on the device.
6. DO NOT clean the device with alcohol, thinner or benzene.

Caution!!!

You will be required to format internal HDD (Chapter 3.3.2), backup entire data before formatting.

1.2 Specification

■ Hardware Spec.

Exterior Interfaces	Video Output	Composite Out	X 1
		HDMI 1.3 Out	X 1
		YPbPr Out	X 1
	Audio Output	Audio Out L/R	X 1
		SPDIF(Optical)	X 1
	File transfer port	USB 2.0 Host port	2 Ports (USB 1 / USB 2)
	Data transfer with PC	USB 2.0 mini port	X 1
	Ethernet	10/100Mbps RJ-45	X 1

■ Wireless Dongle: (Optional)

Wireless USB Dongle WI-FI	Optional
---------------------------	----------

Note: Please DO NOT buy any of wireless dongle in store. Only certain USB dongle works with this device.

■ Software Spec.

Multi-Media Support	Movie Decoding (Video)	MPEG-1 MPEG-2 MPEG-4 DivX 3/4/5/6, Xvid H.264, AVC WMV 9 FLV Real Video 8/9/10	MPG/MPEG/DAT support up to 1080p MPG/MPEG/VOB/ISO/IFO/TS/TP/M2TS support up to 1080p MP4/AVI/MOV support up to 1080p AVI/MKV/ support up to 1080p TS/AVI/MKV/MOV/M2TS support up to 1080p WMV support up to 1080p FLV support up to 352x288 RM/RMVB support up to 720p
	Movie Decoding (Audio)	Dolby Digital AC3/Plus/TrueHD 5.1ch DTSMaster Audieo 7.1ch MPEG-I Layer 1/2/3 MPEG-II Layer 1/2 MPEG4 HE AACv2 Real Audio, AAC, LPCM HDMI RAW/SPDIF RAW	
	Audio Decoding (Music)	WMA, MP3, Real Audio (RA), WAV, OGG, AAC, FLAC, asf, M3U, MKA, MP4	
	Picture Format	JPG, JPEG, BMP, PNG, GIF, TIFF	

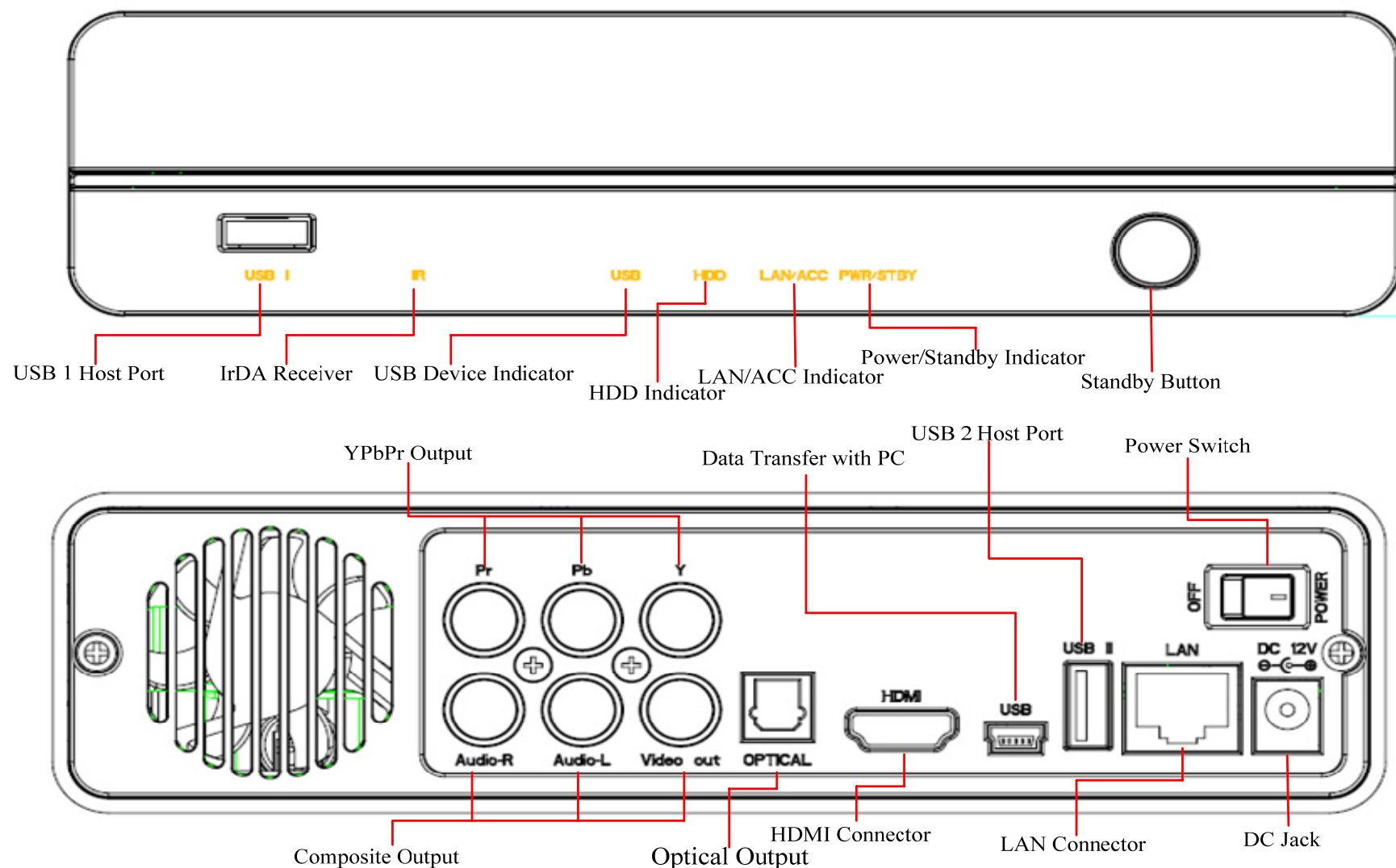
Note: The specification and design is subject to change without any notice.

1.3 Package Contents

- Media player x 1
- Remote Control x 1
- AAA battery x 2
- DC Adaptor (12V2A) x 1
- Composite Video/Stereo audio Cable x 1
- USB Cable x 1
- Quick Start Guide x 1
- User CD Disc x 1
- Screw pack x 1

2 Easy Installation Guide

2.1 Front / Back Panel



HDD Installation Introduce

NOTE: Installing 3.5/2.5 -inches HDD is not a necessary step if you only want to playback via USB external hard drive.

3.5 - inches

Step 1: Loose the two screws in the rear panel, and then slide out the tray



Step 2: Install 3.5" SATA HDD to the SATA connector



Step 3: Lock the tow screws.



Step 4: Slide the tray back into the aluminum case and lock both screws in rear panel.



2.5 – inches

Step 1: Loose the two screws in the rear panel, and then slide out the tray



Step 2: Lock a screw to connect the A part and HDD.



Step 3: Install 2.5" SATA HDD to the SATA connector



Step 4: Lock a screw to connect the A part and device.

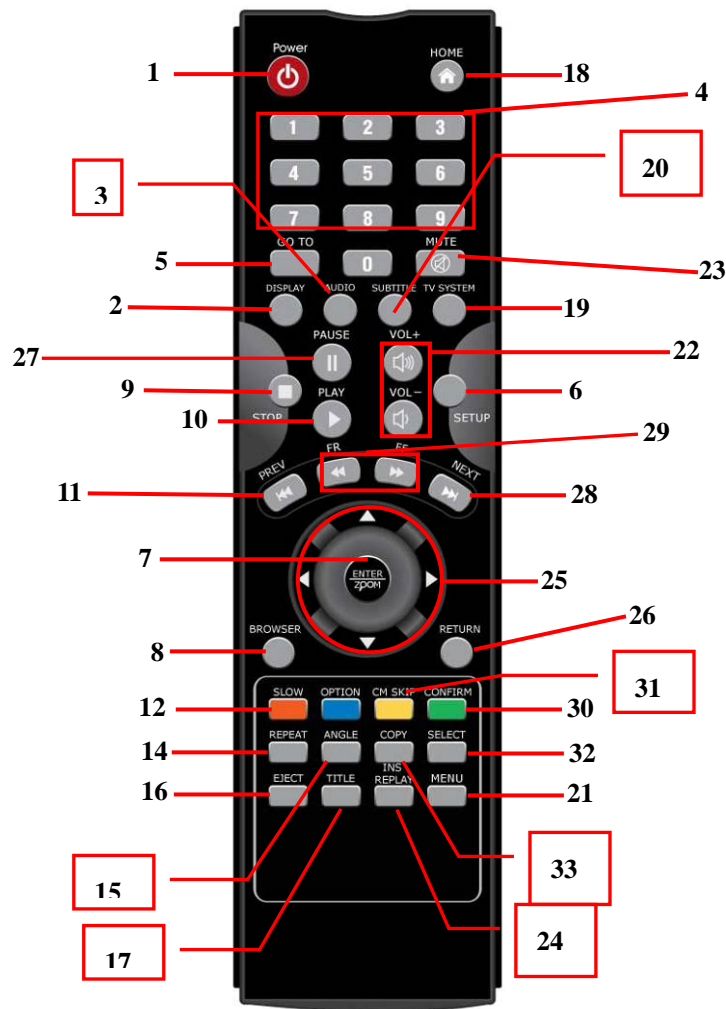


Step 5: Slide the tray back into the aluminum case and lock both screws in rear panel.



3 Using Media Player

3.1 Remote Control Introduction



- | | | |
|------------------|----------------|-------------|
| 1. POWER | 16. EJECT | 31. CM SKIP |
| 2. Display | 17. TITLE | 32. SELECT |
| 3. Audio | 18. HOME | 33. COPY |
| 4 Number Buttons | 19. TV SYSTEM | |
| 5. GOTO | 20. SUBTITLE | |
| 6. Setup | 21. MENU | |
| 7. Enter/ZOOM | 22. VOL + / - | |
| 8. Browser | 23. MUTE | |
| 9. STOP | 24. REPLAY | |
| 10. PLAY | 25. Navigation | |
| 11. PREV | 26. RETURN | |
| 12. SLOW | 27. PAUSE | |
| 13. Option | 28. NEXT | |
| 14. REPEAT | 29. FR/FF | |
| 15. ANGLE | 30. CONFIRM | |

3.2 Getting Started

Please make sure that you've installed the AAA batteries into the remote control.

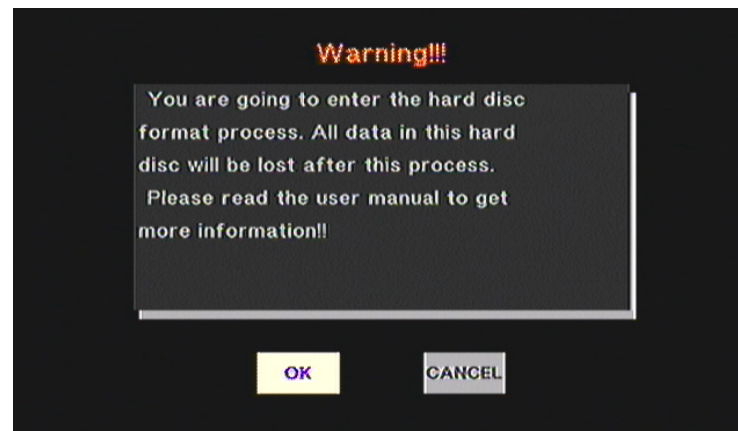
3.2.1 Connect Media Player to your TV

Connect either HDMI or Composite from media player to your TV.

- When connecting the HDMI cable to TV, the device will detect the highest resolution that will possibly work for your TV.
- When connecting the Composite cable (CVBS) to TV, make sure your TV system is either PAL or NTSC.

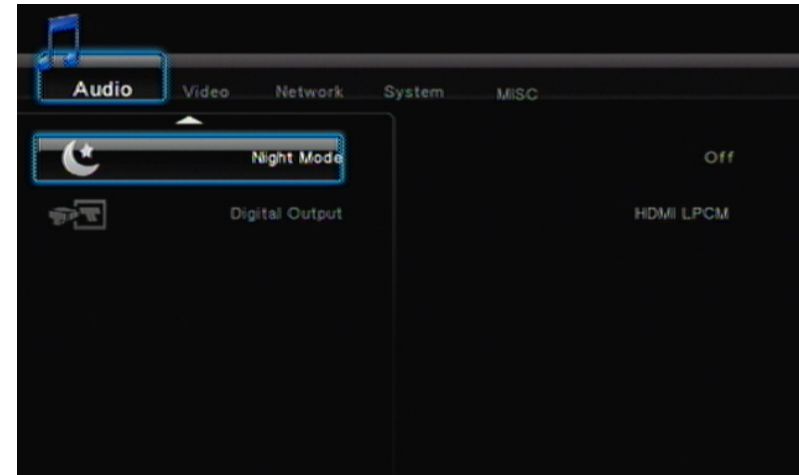
3.2.2 Initiate Media Player

After installed HDD inside for the first time, you will be required to format Hard Disk. Make sure the data has been backup before click "OK".



3.2.3 Setup

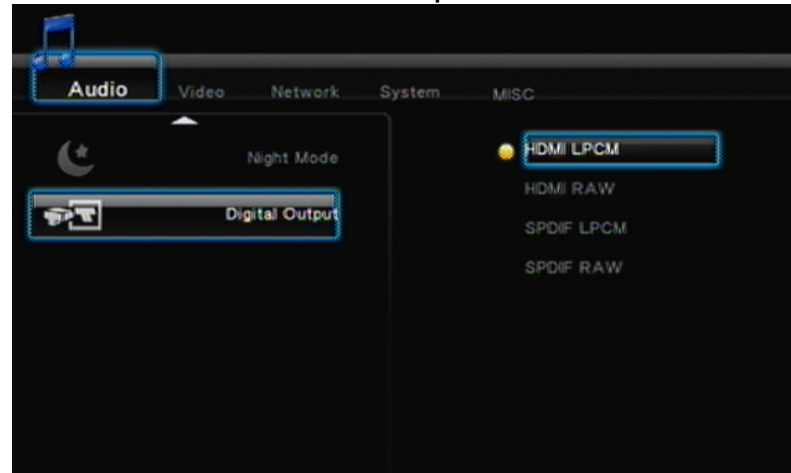
Through main screen menu, you will be able to enter into the Setup page such as Audio, Video, Network, System and MISC. You may press ENTER (Key 7) to access each setting.



3.2.3.1 Audio

This setting is focusing on the outputs of Audio. There are 4 digital outputs, HDMI LPCM, HDMI RAW, SPDIF LPCM and SPDIF RAW.

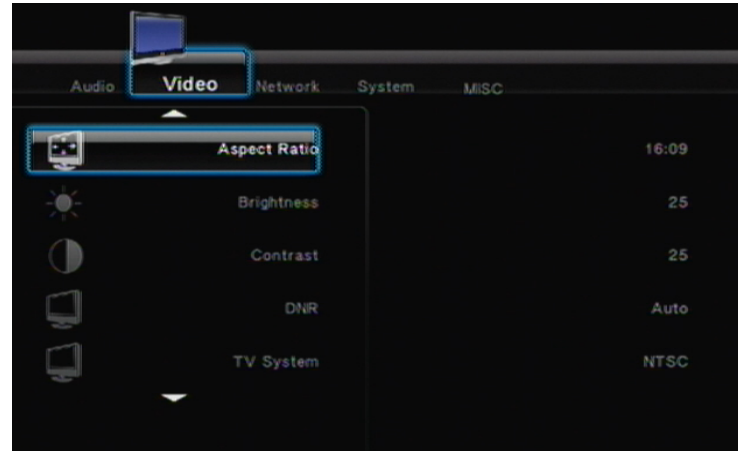
- HDMI LPCM (2CH): When player audio output connects to TV via HDMI, the player will decode audio as STEREO.
- HDMI LPCM Multi CH: When player audio output connects to TV via HDMI, the player will decode audio as STEREO.
- HDMI RAW: When player audio output connects to amplifier via HDMI, the player will send the RAW data to amplifier. Amplifier will decode RAW data into multiple audio channels such as 5.1 or 7.1.
- SPDIF LPCM (2CH): When player audio output connects to amplifier via SPDIF, the player will decode audio as STEREO through amplifier.
- SPDIF RAW: When player audio output connects to amplifier via SPDIF, the player will send the RAW data to amplifier. Amplifier will decode RAW data into multiple audio channels such as 5.1 or 7.1.



TIPS:

- If you only have HDMI TV, please choose HDMI LPCM(Stereo)
- If you have HDMI TV with HDMI amplifier, please choose HDMI RAW or HDMI LPCM(Stereo)
- If you have HDMI TV with SPDIF amplifier, please choose SPDIF RAW or SPDIF LPCM(Stereo)

3.2.3.2 Video



- **Aspect Ratio:** Choose one that is suitable for your TV system. Pan Scan 4:3, Letter Box 4:3, 16:09.
 Pan Scan 4:3 : Keep the height of wide screen, and cut off the right/left screen to fit the 4:3 TV system.
 Letter Box 4:3 : Keep wide screen, and black border will be covered on the top and bottom of screen to fit the 4:3 TV.
 16:9 : Choose 16:9 to fit 16:9 TV system.
- **TV System:** Choose the right resolution of output to TV.

TV System and Resolution	Standard Resolution(SD)	High Definition Resolution(HD)
NTSC	NTSC, 480p	720p@60Hz, 1080i@60Hz, 1080p@60Hz
PAL	PAL, 576p	720p@50Hz, 1080i@50Hz, 1080p@50Hz

TIPS:

- Only HDMI supports High Definition Resolution
- Connect player to TV via HDMI, TV will notify player what resolution it supported. If TV doesn't support the resolution, it will be un-selectable
- In case if you choose a wrong resolution and your TV screen go black, you always can connect through CVBS to get back the right resolution.

Network

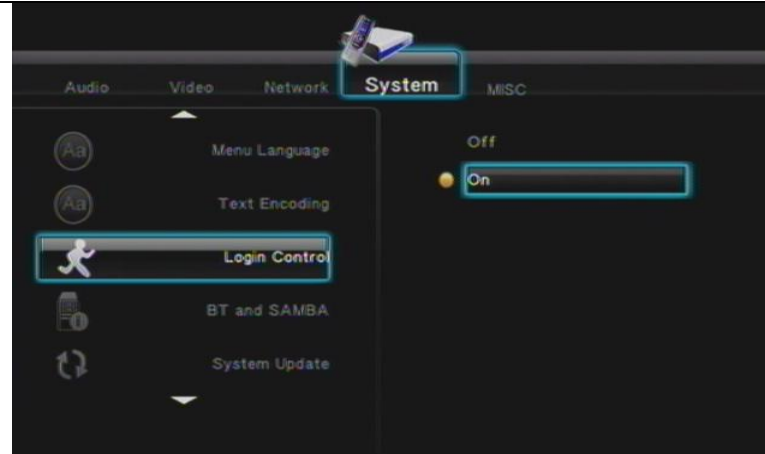


- **Wired LAN Setup:** Select to set the network settings between DHCP (AUTO) and DHCP (Manual). If you have a network device such as Router, and it could assign IP by itself. Please select DHCP (Auto). Otherwise, please make sure your IP address, subnet mask and default gateway, then enter them manually.
- **Wireless Setup (Optional):** Select to set the wireless network setting. When plug-in a USB WI-FI dongle, the player will detect the dongle automatically.

Note 1: Please try not to buy any wireless USB dongle from any store due to the dongle is restricted with certain dongles.

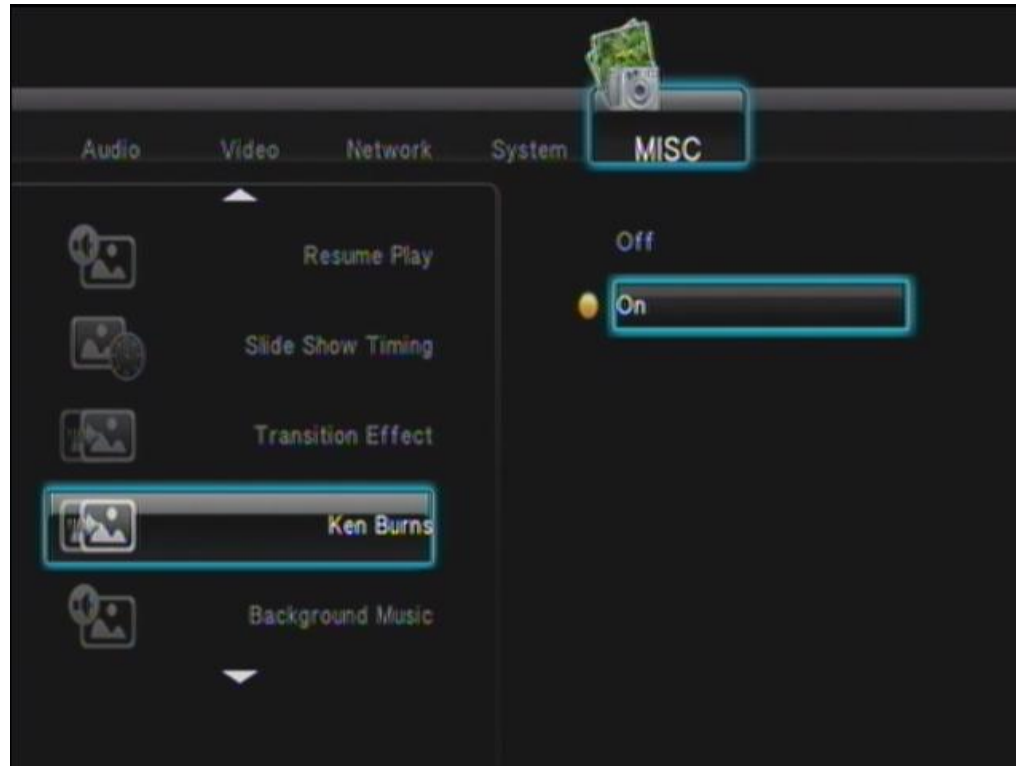
Note 2: The player with WIFI dongle will only be able to recognize the WEP with Open system, and only the Key 1 will be recognized. Also, only WPA-Personal, WPA2-Personal and WPA-AUTO Personal are recognizable for the player.

3.2.3.3 System



- Menu Language: Select language. There are English, Traditional Chinese, Spanish, French, Germany, Italian, Dutch, Polish, Czech and Simplified Chinese available.
- Text Encoding: This setting is to display subtitle, file name and folder name in your language. Most of the time, Unicode UTF-8 can support many languages. However if your language is not supported, choose the most suitable one in the menu. If wrong setting is selected, unrecognizable characters may be seen
- Login Control: Select ON to enable the BT web management access control.
- BT and SAMBA: To enable File Sharing and BT services.
- System Update: Select this setting to update the newest firmware. Please follow the steps below.
 1. Prepare a USB flash drive or USB external hard disk and connect it to PC, then copy the firmware file to the root folder
 2. Plug in USB flash drive or USB external hard disk into the USB 1 or USB 2 host port of player
 3. Select System Upgrade, press OK to proceed
 4. Please wait for about 5 minutes. During the upgrade procedure, please DO NOT turn off the power
 5. When finish, player will reboot automatically
- HDD Format: When you insert a 3.5" SATA HDD on the system, you will need to format the HDD. Press OK, the system will format the HDD.
- Restore to Default: Once you press this function, all setting will be back to default.

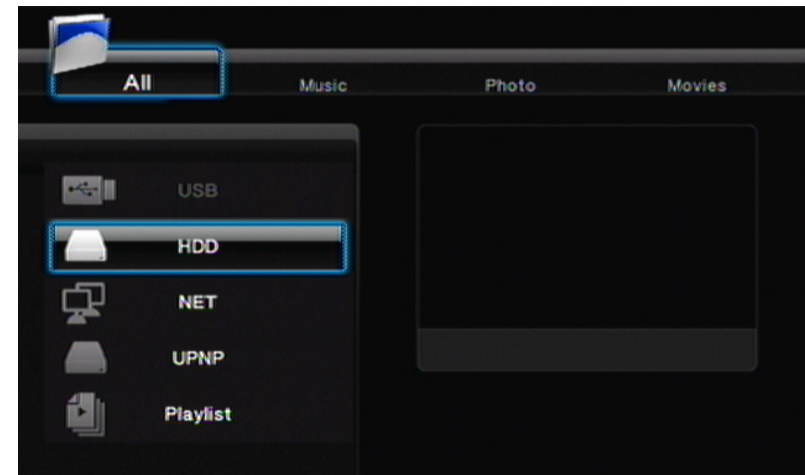
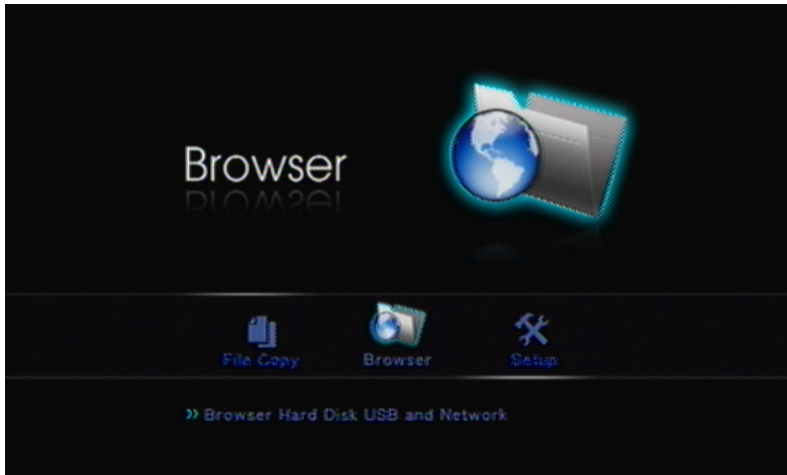
3.2.3.4 MISC



- Resume Play: Select to turn ON/OFF to resume from video once you STOP the movie.
- Slide Show Timing: This function is to set the timing of picture showing on TV. There are options of OFF/2 Sec/5 Sec/10 Sec/30 Sec/1 Min/2 Min.
- Transition Effect: Select effect for slide show.
- Ken Burns: Default active play mode.
- Background Music: Play background music during slide show.
- Screen Saver: Screen saver will activate if there is no any action of browsing for 5 minutes.
- Movie Preview: Select On/Off for movie preview.
- Seamless Playback: Select On/Off to make the movie file (.ts) play smoothly.

3.2.4 Browser & Play

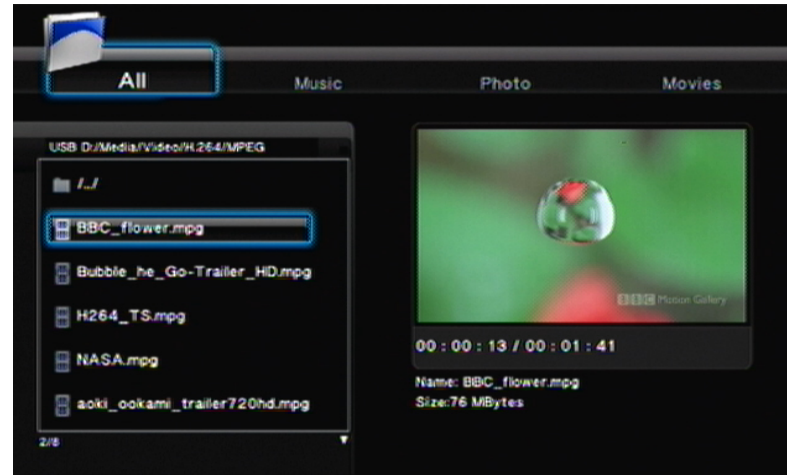
You may use this player to play Music, Photo and Movie by plug-in USB Flash Drive, USB External Hard Disk and etc. When enter into the Browser icon you will be able to browse all media files where you stored in 3.5" Hard Disk, USB Flash Drive or USB External Hard Disk.



- When plug-in USB device into player, wait about a few seconds, the USB LED indicator will be lighted. And then you can browse the media files. Once you remove the USB device from player, the USB LED indicator will be off.
- By pressing Navigation Right/Left (Key 25) buttons on remote control to select whether you would like to browse Music only, Photo Only, Movie only or Browse All. You may press RETURN (Key 26) anytime when you want to return to last page.
- By pressing Navigation Up/Down (Key 25) buttons on remote control to select whether you would like to browse USB, HDD, NET, UPNP or Playlist. You may press RETURN (Key 26) at anytime when you want to return to previous page.

3.2.4.1 Play Movies

Select Movie or All tabs to browse movie files. In the browser, use Up/Down (Key 25) to select a file or a folder, and then press Enter (Key 7) to play the file or open the folder. You may press RETURN (Key 26) back to previous page. In the browser, moving the scroll bar to movie file, you will see the preview on the right side window.



- Press PLAY (Key 10) on remote control to play the movie.
 - Press STOP (Key 9) on remote control to stop the movie.
 - Press PAUSE (Key 27) on remote control to pause.
 - Press FF/FR (Key 29) on remote control to Fast Forward or Backward.
 - Press NEXT (Key 28) / PREV (key 11) on remote control to go next or previous chapter if applicable.
 - Press SUBTITLE (Key 20) on remote control to enable or switch subtitles. This player supports srt, sub, smi, idx+sub, ssa, ass. Please rename the subtitle file name to be same as movie file name. Multi-Subtitle can be the same file name; the play will show the option for you to choose.
1. Text Encoding: This setting is to display subtitle, file name and folder name in your language. Please select Unicode (UTF8), Simplified Chinese, Traditional Chinese, Western, Turkish, Central European, Greek, Cyrillic, Hebrew, SE Europe. If wrong setting is selected, unrecognizable characters may be seen.

2. Time Sync: Adjust the time of subtitle.
3. Color: Adjust the color of subtitle.
4. Size: Adjust the size of subtitle.
5. Off set: Adjust the position of subtitle.

Adjust the navigation key in playing mode :

Horizontal: Adjust the size of subtitle.

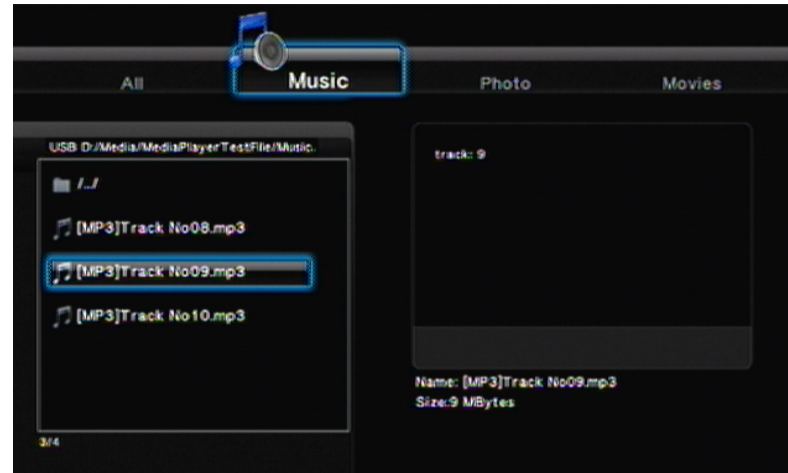
Vertical: Adjust the position of subtitle.



- Press AUDIO (Key 3) on remote control to switch different audio outputs.
- Press VOL +/- (Key 22) on remote control to increase or decrease the volume.
- Press MUTE (Key 23) on remote control to mute the audio output; press again to resume.
- Press SELECT (Key 32) on remote control to add the movie into PLAYLIST. Press CONFIRM (Key 30) to confirm.

3.2.4.2 Play Music

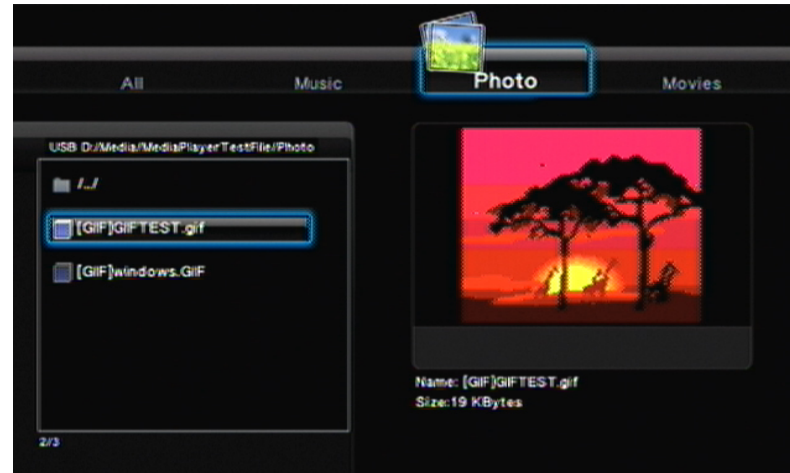
Select Music or All tabs to browse music files. In the browser, use Up/Down (Key 25) to select a file or a folder, and then press Enter (Key 7) to play the file or open the folder. You may press RETURN (Key 26) back to previous page. In the browser, moving the scroll bar to music file, you will see the music information on the right side window.



- Press PLAY (Key 10) on remote control to play the music.
- Press STOP (Key 9) on remote control to stop the music.
- Press PAUSE (Key 27) on remote control to pause.
- Press FF/FR (Key 29) on remote control to Fast Forward or Backward.
- Press REPEAT (Key 14) on remote control to repeat the same music; press again to repeat all music.
- Press VOL +/- (Key 22) on remote control to increase or decrease the volume.
- Press MUTE (Key 23) on remote control to mute the audio output; press again to resume.
- Press SELECT (Key 32) on remote control to add the music into PLAYLIST. Press CONFIRM (Key 30) to confirm.

3.2.4.3 Show Photo

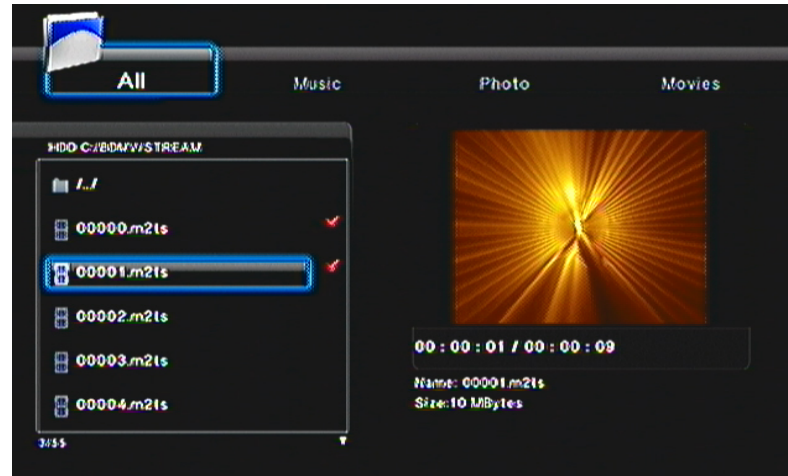
Select Photo or All tabs to browse photo files. In the browser, use Up/Down (Key 25) to select a file or a folder, and then press Enter (Key 7) to play the file or open the folder. You may press RETURN (Key 26) back to previous page. In the browser, moving the scroll bar to photo file, you will see the photo on the right side preview window.



- Press PLAY (Key 10) on remote control to play the photo.
- Press STOP (Key 9) on remote control to stop the photo.
- Press PAUSE (Key 27) on remote control to pause.
- Press VOL +/- (Key 22) on remote control to increase or decrease the volume.
- Press SELECT (Key 32) on remote control to add photo into PLAYLIST. Press CONFIRM (Key 30) to confirm.

3.2.4.4 Adding contents to PLAYLIST

Playlist creates a shortcut to allow quick access to the media files. You can play all selected files together regardless of different folders they are located in.



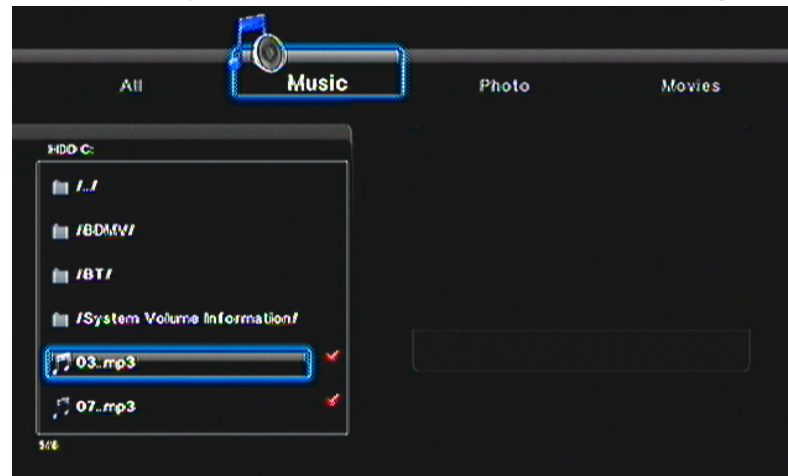
- Go to Browser and go to the media files that you'd like to put in the PLAYLIST
 - Press SELECT (Key 32) to choose file(s)
 - Press CONFIRM (Key 30) to add the file(s) into the PLAYLIST
- Then, you will see the file(s) that you selected in PLAYLIST

TIPS:

- PLAYLIST function is only available if you installed 3.5" SATA HDD into the player; the function is not available for any USB device such as USB external HDD
- You can only select files; folder is not selectable

3.2.4.5 Slide Show

You may run the slide show to see your photos on TV while listening to selected music.



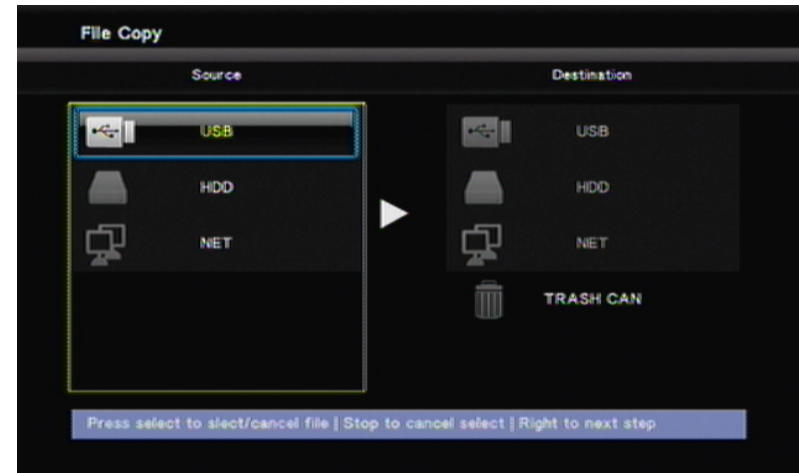
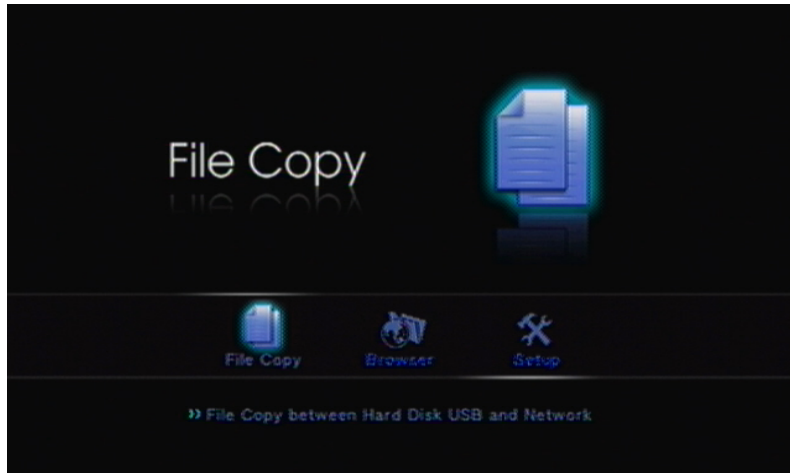
- Go to Setup → MISC → Slide Show Timing and set the timing for slide show.
- And then, go to Background Music and set the source of music files from Folder or PLAYLIST
- Go back to Browser and press Right/Left to choose the Music tab
- Add music files into PLAYLIST. Press SELECT (Key 32) to select and press Confirm (Key 30) to confirm
- Press Right/Left to choose the Photo tab and choose photos that you'd like to play slide show with
- Press PLAY (Key 10) or ENTER (Key 7) to play the slide show

TIPS:

- If you set the Background Music source as Folder, you have to put photo files and music files in same folder, so that you can have slide show with background music when playing

3.2.4.6 File Copy

This function will allow you to copy file(s) between USB, HDD and NET. You even can move file(s) to trash, that means the file will be deleted. You also can press COPY (Key 33) to go to File Copy menu at anytime.




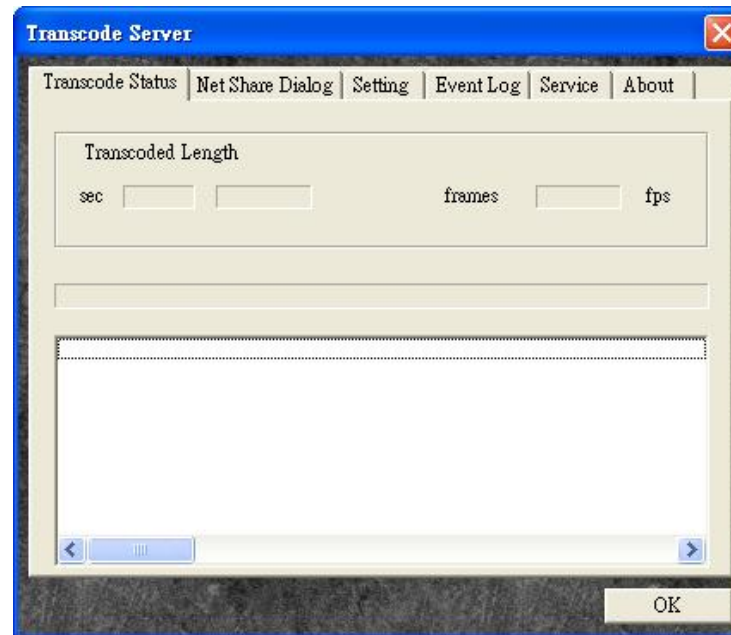
- Use Up/Down (Key 25) to move the scroll bar and choose the source and destination. Press ENTER (Key 7) to proceed.
- Press ENTER (Key 7) to go into folders for both Source and Destination.
- Press SELECT (Key 32) to select the source file that you want to copy. Press again to cancel the selection.
- Press RIGHT (Key 25) to COPY file to the chosen destination. Then choose OK to copy, Move to move the chosen file(s) or Cancel the copy.
- If you choose Destination to TRASH CAN, the file(s) will be deleted.

4. Transcoding Software

After installing Transcode Server, you will be able to run BT download and File Sharing function on media player.

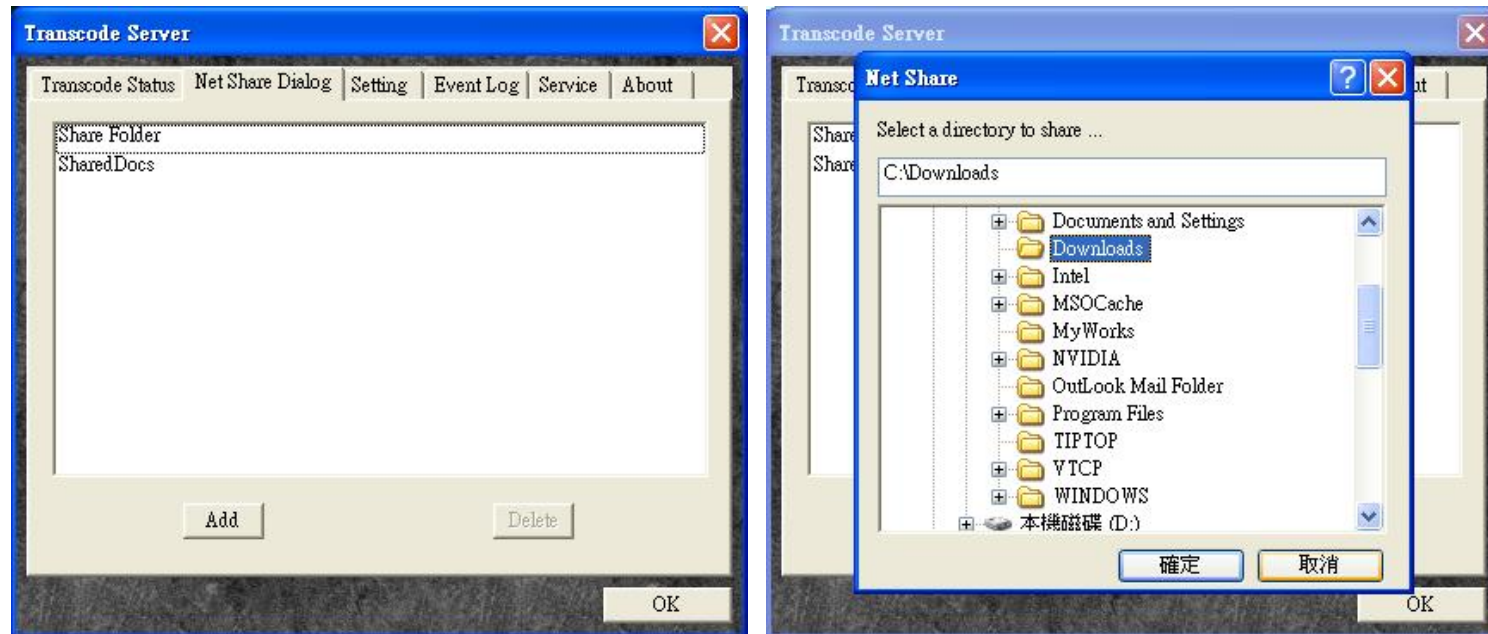
4.1 Install and run under Transcode Server

Please find the software of Transcode Server in CD disc, and install  to your PC. Then run Transcode Server on your PC. You will see the screen as below:



4.2 Adding Share Folders on PC

Adding share folders to NetShare Dialog will help media player to recognize the folder on intranet quickly; Once you have opened sharing folder and kept Transcode software running on the PC, your PC and the folders will be seen in My_Neighbors under BROWER and FILE COPY of the media player main screen.

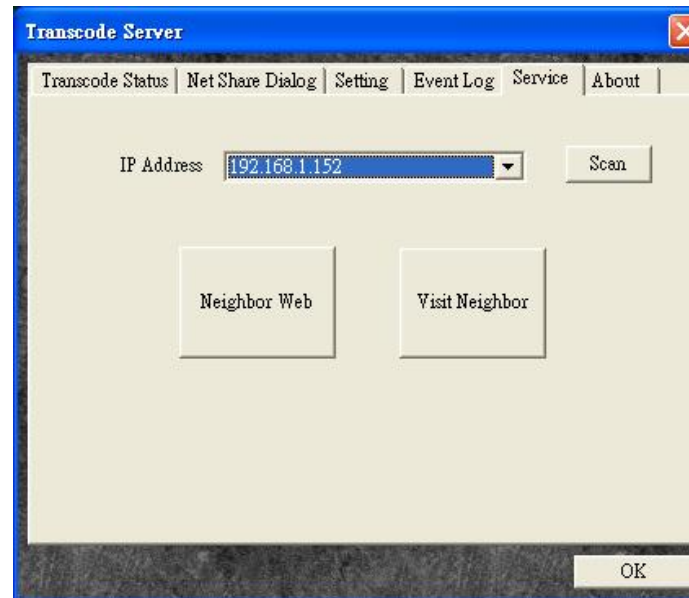


TIPS:

1. By selecting a folder, and then click on OK, the folder will be added to NetShare Dialog as an Open Shared Folder on intranet.

4.3. The ways connect to File Sharing folders and BT download management

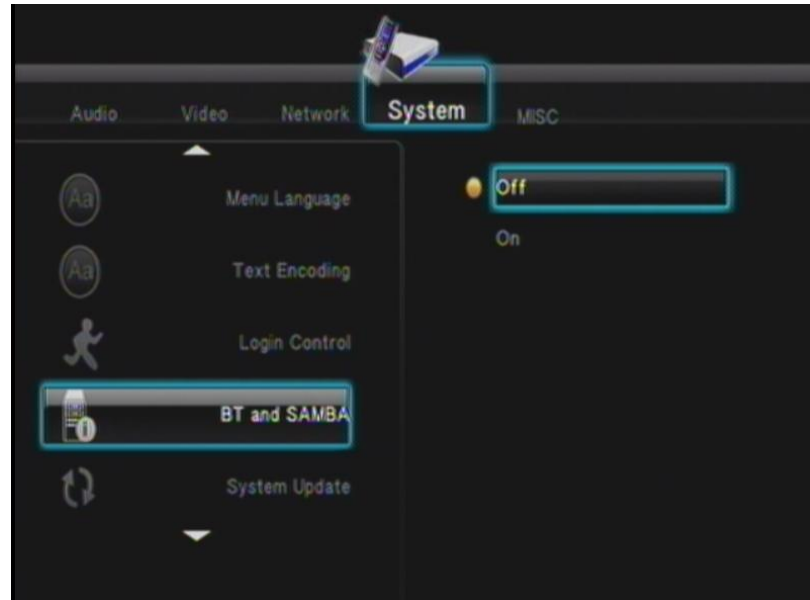
Make sure your Network Connection is connected and IP had been assigned (Either assign from DHCP server or fixed IP) to the media player. Therefore, if you set the IP of media player correctly, you will see the IP address when you click on **Service tab**→ **Scan**.



Note: Before you set up File Sharing and BT download management, please install 3.5” SATA Hard Disk into media player and format it. Otherwise, this function will not work properly.

4.3.1 Set up the media player

Before you access to File Sharing folder or BT download management, you will need to set up the player. Please go to the main menu of player, and then clicks as following: Setup → System → BT and SAMBA.



Move the scroll bar down to BT and SAMBA, and then press OK on remote control. The system will show two selections (On/Off). Move the scroll bar down to On and then press OK, it will enable the BT and SAMBA function.

4.3.2 Connect to File Sharing Folder

Click on “Visit Neighbor” on Transcode Server, you will be redirected to the File Sharing folders. You will be able to browse all the files that you had stored inside the 3.5” SATA HDD.

4.3.3 Connect to BT Download Management

Click on “Neighbor Web” on Transcode Server, you will be redirected to the P2P download web user interface. You will be able to add/delete BT seeds under internet browser page. If you set the Login Control as ON, login account and password are required. The default account name and password are same as 4.3.4.

4.3.3.1 Setting

Neighbor Web

BitTorrent Setting

Rate

Max download rate (0 = no limit) : 0 KB/s

Max upload rate (0 = no limit, default 20) : 20 KB/s

If within 1 Hr. no download process it will auto stop , switch to next Item automatically .

Seed Setting

Seeding time is 24 Hr. (0 means disable uploading)

Delete the torrent file automatically. NO

Simultaneous setting

Max simultaneous download tasks number 4

Save Setting return default

You will need to set up the settings before you use P2P download. Please click on BitTorrent Download on the top, and then click on “Setting” tab for BitTorrent Setting.

Max Download Rate: Set the maximum download speed. Set to “0” is no limit.

Max Upload Rate: Set the maximum upload speed. Set to “0” is no limit. Default setting is 20KB/s.

Seeding time: Setting of how long you would like to keep sharing the seed once task finished. Default is 24 hours; set to “0” mean not sharing after finished.

Delete the torrent file: When finish, the system will delete the torrent task automatically. Default setting is NO.

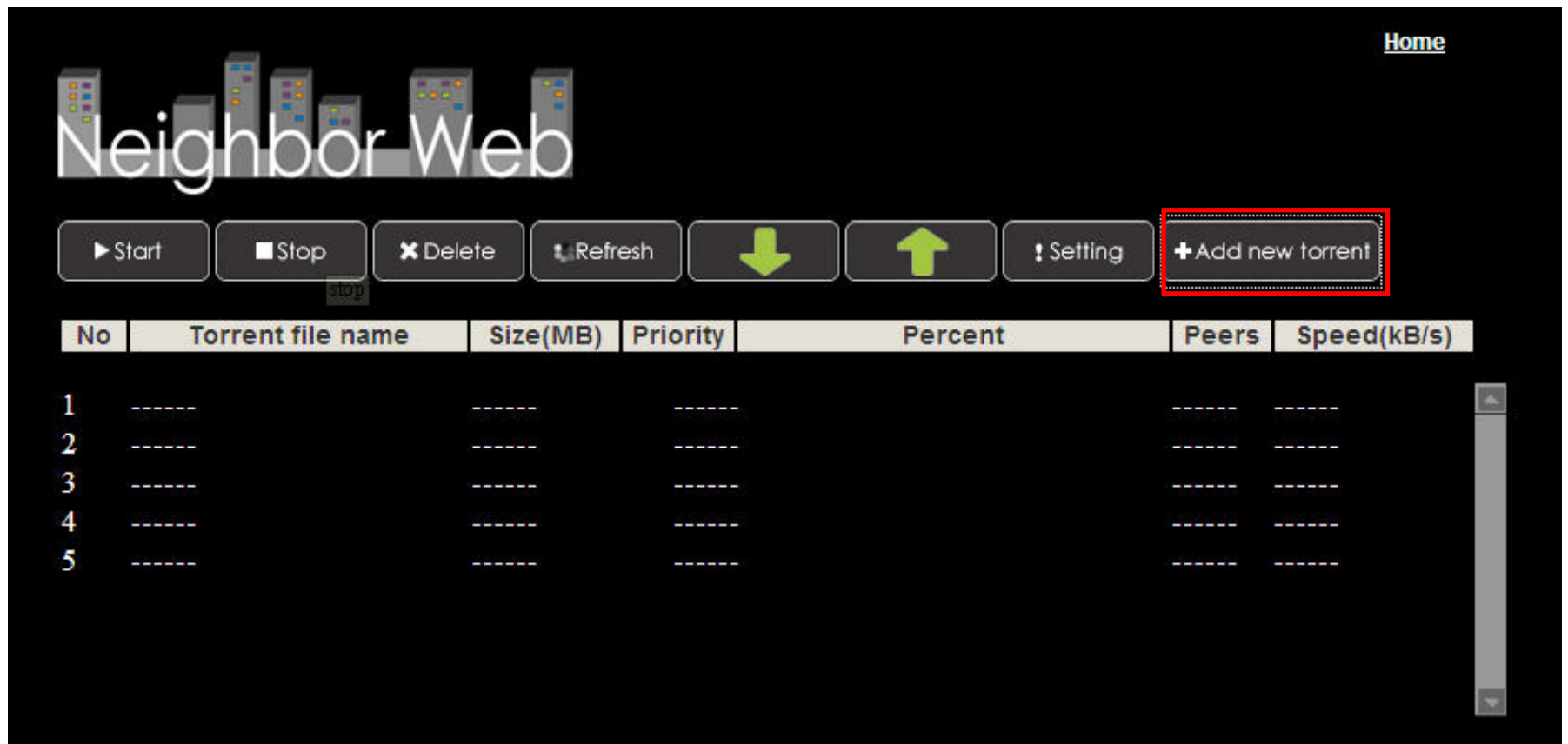
Max simultaneous download task number: Setting of how many tasks you would like to run at the same time. Default setting is 4 tasks. Maximum is 10 tasks.

When finish the setting, please click on the “Save Setting” to save all settings.

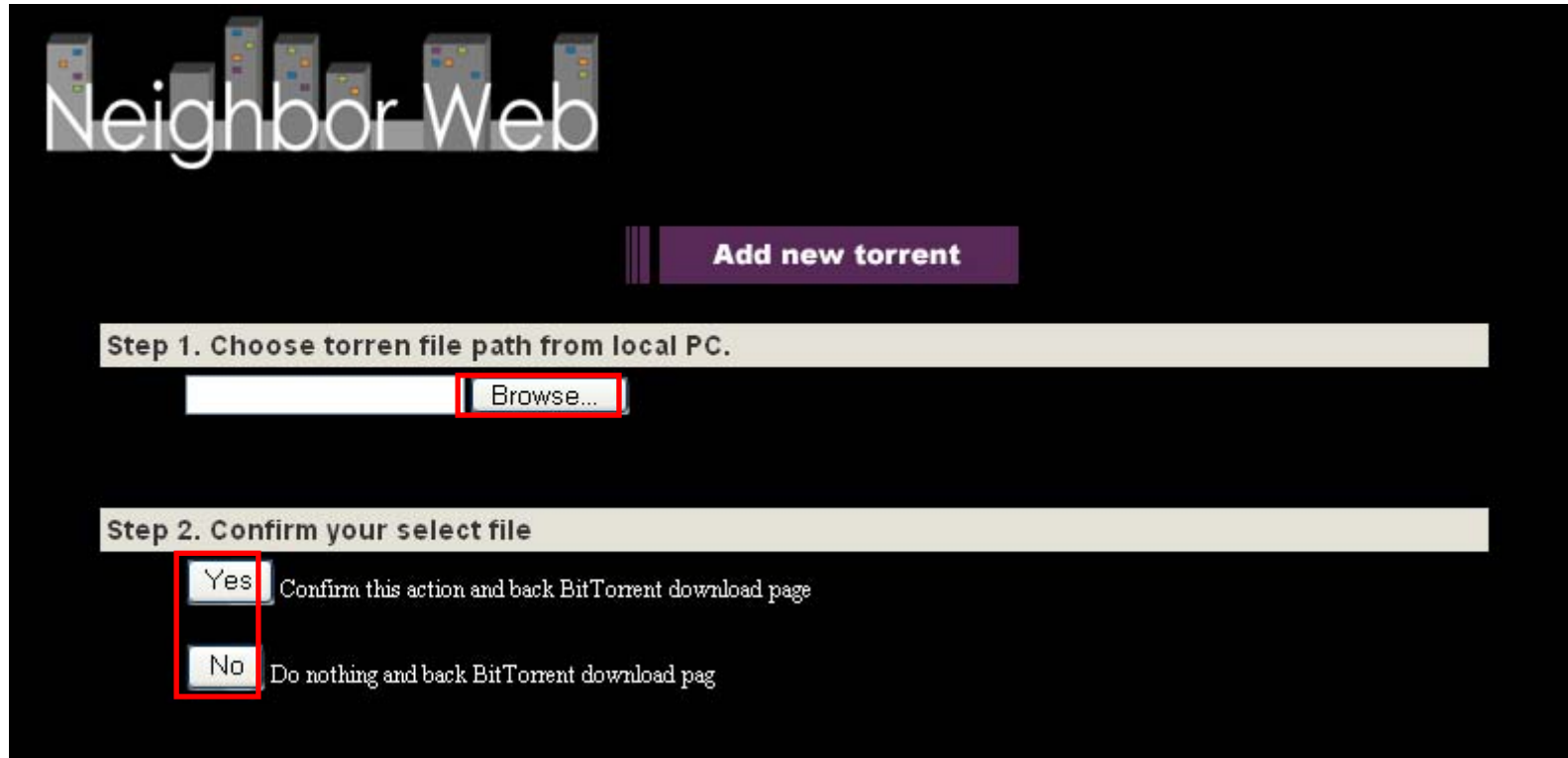
NOTE: Please be aware that overloading BT tasks would impact the performance of the media player. It is recommended to leave the device idle when performing BT download.

4.3.3.2 Adding seeds

1. Click on “+Add new torrent” to add a new download task.



2. Click on “Browse” button to select where you stored the seed file.
3. Click on “Yes” button to confirm the task and back to download main page or click on “No” back to download page.

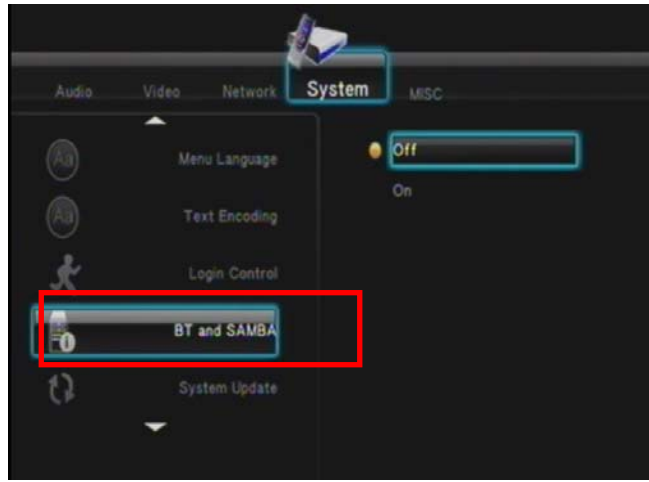


4.3.3.3 Delete Task

1. Click on “Check box” to select task in which you would like to delete
2. Click on “Delete” tab on the top to delete the task

4.3.4 Account Management

Please enable the “Login Control” under System of media player before you click on Account Management.



After the Login Control is set, the system will require you to login.

Account name: admin

Password: 123

Click on Account Management of Neighbor Web, you will be able to modify your password. Click on Enter to modify new password.

