

TOSHIBA
Leading Innovation >>>

USB FLASH DRIVE

TransMemory™



Security Software Installation Manual

2010

Table of Contents

Chapter 1: Introduction	2
Chapter 2: Required System Configuration	4
Chapter 3: How to Download the Security Software	5
1. Connect the TransMemory™ USB U2P Flash Drive	5
1.1 Downloading the TransMemory™ Secure Software	5
Chapter 4: How to Use the Security Software	7
1. Connect the TransMemory™ USB 2.0 Flash Drive	7
1.1 Setting up the security software - adaptability	7
1.2 Setting up the security software	9
1.3 Formatting using the security software	11
2. Changing the Security Software Password and Log In/Log Out	18
2.1 Changing the password using the security software	18
2.2 Logging into the Privacy Zone using the security software.	20
2.3 Logging out of the Privacy Zone using the security software	22

Chapter 1: Introduction

Thank you for purchasing a TransMemory™ USB Flash U2P Drive (“TransMemory™” or “TransMemory™ Flash Drive”). The device has the following features:

- This TransMemory™ Flash Drive, featuring Toshiba’s NAND flash memory, can be used as a removable disk for a personal computer.
- Toshiba TransMemory™ Secure Software is available to allow password protection of saved data.
- The TransMemory™ Flash Drive is bus-powered, eliminating the need for an AC power adapter.

Important Note: Please comply with all applicable laws regarding the treatment of copyrighted material. Any copyrighted data saved on this device must be used only in accordance with applicable copyright laws.

This document describes how to install and use the TransMemory™ Secure Software. Before installing or using this Software, please read this manual thoroughly to ensure correct use.

- The TransMemory™ Secure Software works only when connected to one personal computer
- Do not activate IEEE1667 password protection and the TransMemory™ Secure Software simultaneously.
- When formatting TransMemory™ Flash Drive using the Secure Software, do not subject it to shaking/impact, turn off the power to your computer, restart your computer, or put it into the Standby or Hibernate mode. If one of the above operations has been performed, please reformat the TransMemory™ Flash Drive using the TransMemory™ Secure Software.
- The TransMemory™ Flash Drive may stop functioning properly if your computer is restarted or resumed from Standby or Hibernate mode while the TransMemory™ Secure Software is enabled and the Privacy Zone is in use. If one of these operations has been performed, disconnect the TransMemory™ Flash Drive from your computer, reconnect it, and log back into the Privacy Zone.
- If you are using the Windows Vista® operating system and have enabled ReadyBoost™ to use the Public Zone, you may find at times that you are unable to log into the Privacy Zone. If this happens, disable ReadyBoost™, disconnect the TransMemory™ Flash Drive from your computer, reconnect it, and log back into the Privacy Zone.
- If you are using the Windows Vista® operating system, do not enable ReadyBoost™ to use the Privacy Zone.
- The images depicted in this manual may differ from the actual product.
- The design, specifications, product manual, and related information are subject to change

without notice.

■ Trademarks

- Microsoft®, Windows®, Windows Vista® and ReadyBoost™ are trademarks, registered in the United States and other countries, of Microsoft Corporation of the U.S.
- Intel® and Pentium® are trademarks or registered trademarks of Intel Corporation in various nations.
- Other companies and products mentioned herein are trademarks or registered trademarks of their respective owners.

Chapter 2: Required System Configuration

The following are required to properly operate this product:

■ Required hardware

- CPU: Intel Pentium II 266MHz or higher
- Available hard disk space of at least 800 KB
- USB Specification-compliant USB port (Operation on self-built or modified personal computers cannot be guaranteed.)

■ Required operating systems

- Microsoft® Windows® 2000 Professional Service Pack 4 or greater
- Microsoft® Windows® XP Professional Service Pack 2 or greater
- Microsoft® Windows® XP Home Edition Service Pack 2 or greater
- Microsoft® Windows Vista® Ultimate
- Microsoft® Windows Vista® Enterprise
- Microsoft® Windows Vista® Business
- Microsoft® Windows Vista® Home Premium
- Microsoft® Windows Vista® Home Basic
- Microsoft® Windows® 7 Ultimate
- Microsoft® Windows® 7 Enterprise
- Microsoft® Windows® 7 Professional
- Microsoft® Windows® 7 Home Premium
- Microsoft® Windows® 7 Home Basic
- Microsoft® Windows® 7 Starter

For Microsoft® Windows® XP or Microsoft® Windows® 2000, be sure to first log in as a user belonging to the Administrator's group. If attempting to log in as a User, an error may result.

Note: The TransMemory™ Secure Software does not work with any operating system other than Microsoft® Windows® systems listed above.

Chapter 3: How to Download the Security Software

Please follow the instructions below to download the TransMemory™ Secure Software.

■ 1. Connect the TransMemory™ U2P Flash Drive

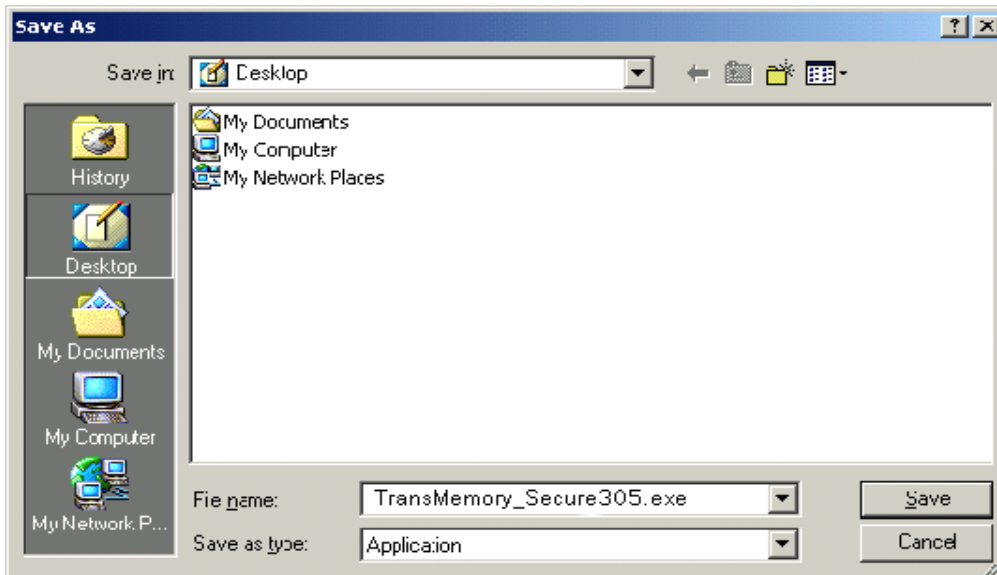
Before downloading the security software, connect the TransMemory™ Flash Drive to the computer. Close all other applications.

■ 1.1 Downloading TransMemory™ Secure Software

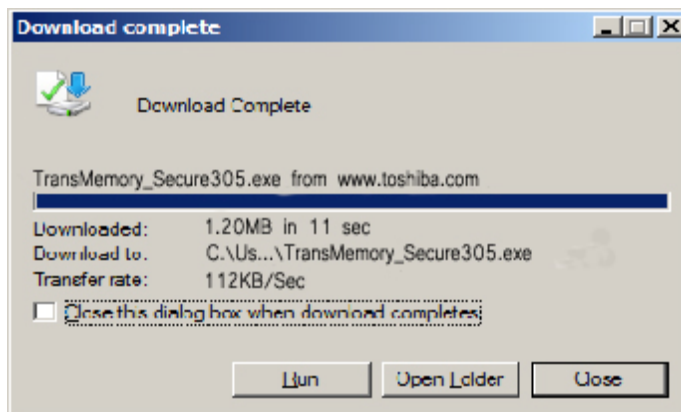
- 1) Access www.digitalmedia.toshiba.com.
- 2) Click on the “TransMemory™ USB U2P Secure Software and Installation Manual” link.
- 3) Then click on the “TransMemory™ U2P Secure Software v305” link.
- 4) Read and agree to the End User Software License Agreement and click the Download button.
- 5) Click on “Save” in the dialog box, as shown below



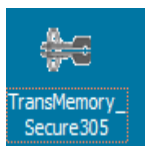
- 6) A dialog box asking where the software is to be saved appears. Select on “Desktop”.



- 7) When the download is complete, the following dialog box appears. Click on “Close”.



- 8) On the desktop, the downloaded software named “TransMemory_Secure305.exe” appears as a new executable file.



Chapter 4: How to Use the Security Software

This chapter describes how to use the TransMemory™ Secure Software. Be sure to follow the instructions for correct installation.

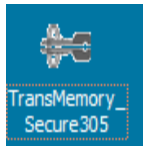
Important Note: Before following the instructions below, please back up any data stored in the TransMemory™ Flash Drive that you wish to save. All data may be lost when formatting TransMemory™ for the Privacy Zone. Toshiba assumes no liability for destruction or loss of data stored on TransMemory™ for any reason.

■ 1. Connect the TransMemory USB U2P Flash Drive

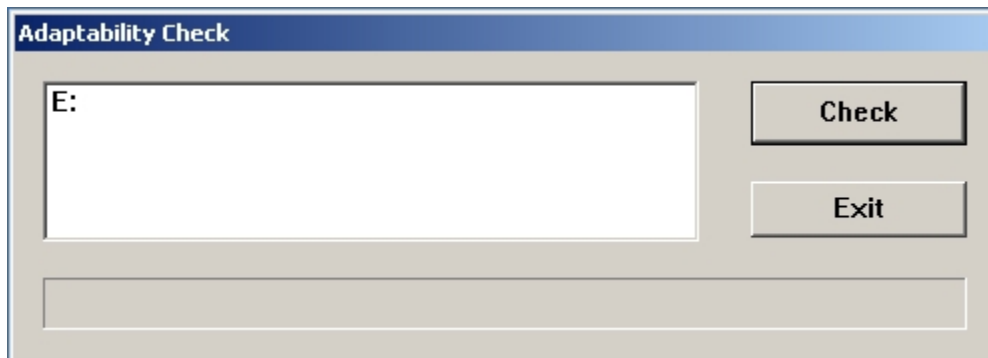
Please connect the TransMemory™ Flash Drive to your computer before executing the TransMemory™ Secure Software.

■ 1.1 Setting up the Security Software – Adaptability Check

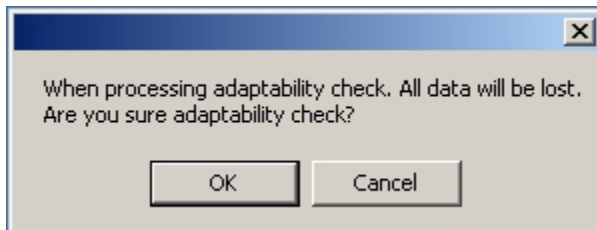
- 1) Double click on the “TransMemory_Secure305.exe” security software icon to start up the security software.



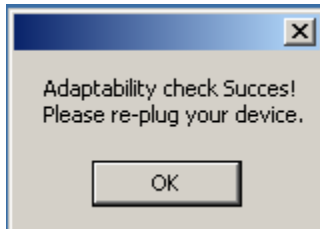
- 2) Some types of TransMemory™ USB Flash Drives will show the dialogue boxes below. Click “Check” when below dialogue box appears.



Click “OK” on the dialogue box below.



Click “OK” on the dialogue box below.



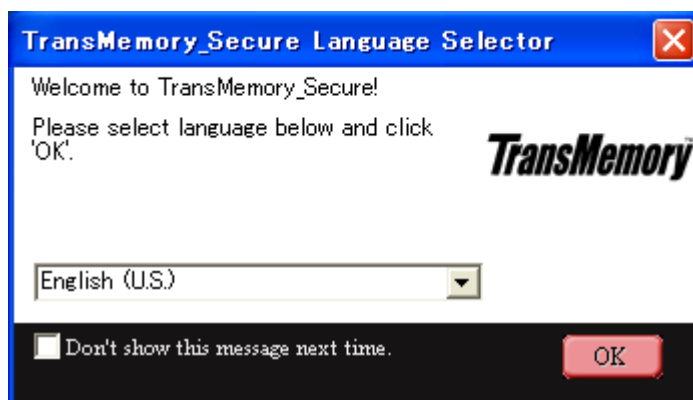
Disconnect the TransMemory™ from the PC. These dialogues boxes will not appear once this protocol is completed.

1.2 Setting up the Security Software

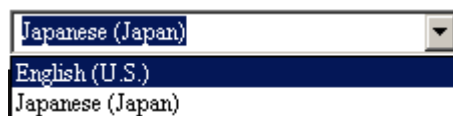
- 1) Double click on the “TransMemory_Secure305.exe” security software icon to start up the security software.



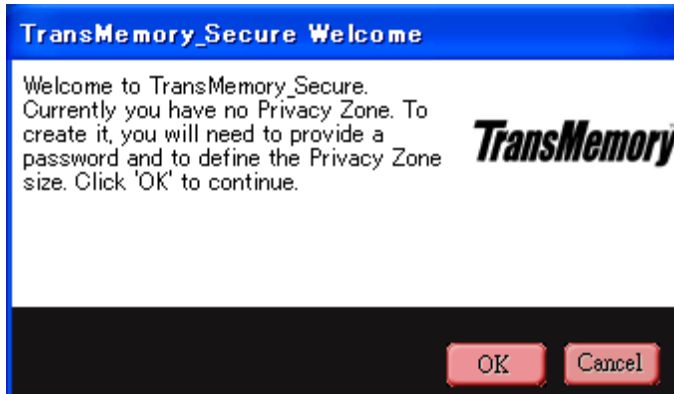
- 2) When the following dialog box appears, click on “OK”.



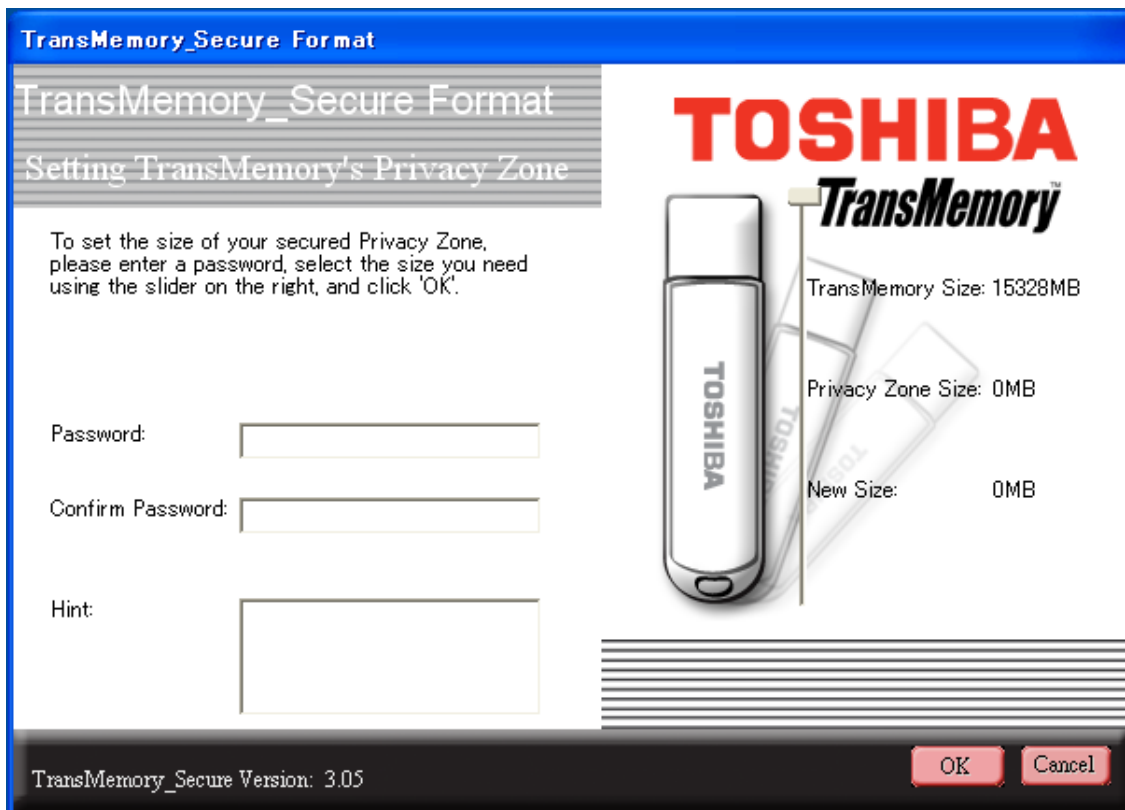
If English is not selected, click on the downward-pointing arrow and select English.



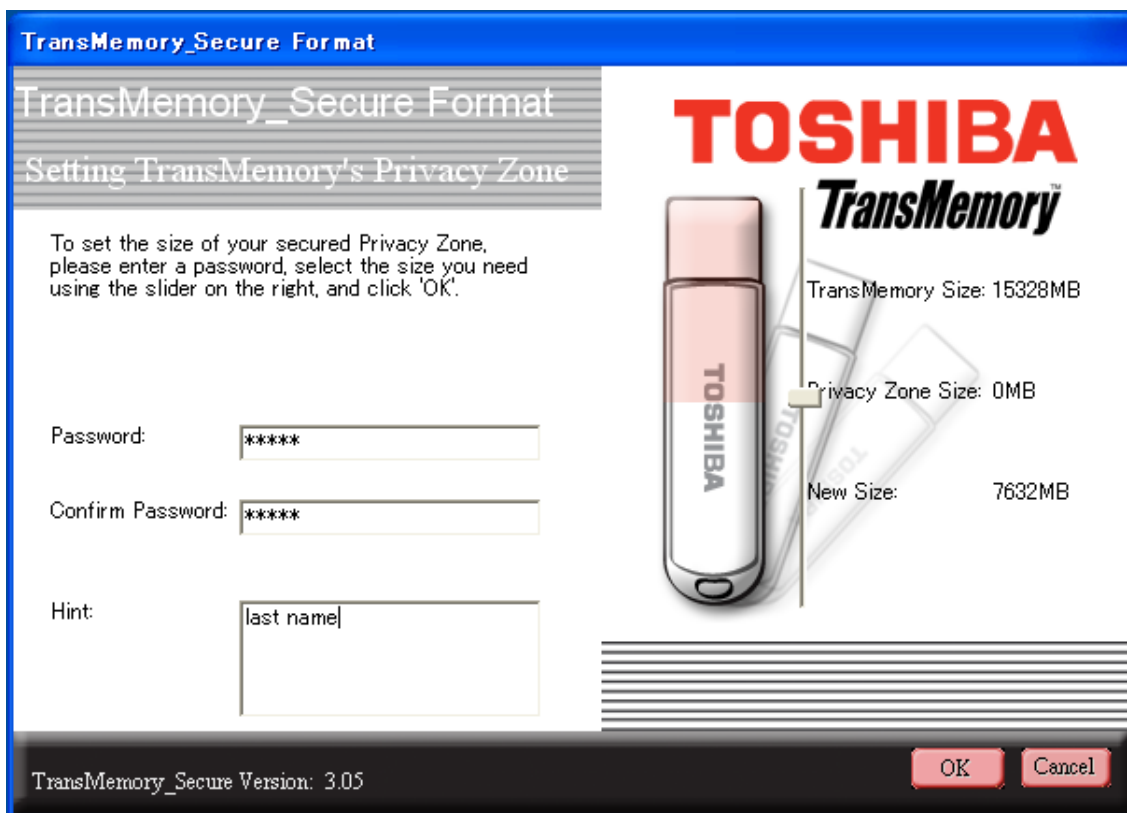
- When the following dialog box appears, confirm and click on “OK” if you have not established a Privacy Zone. The step 7) dialog box on page 13 appears when a Privacy Zone has already been established.



The following dialog box appears.



- 4) Slide the partition to determine the size of the Privacy Zone. Enter the password, reenter the password in the “Confirm Password” box, enter a “Hint” to yourself, and click on “OK”.

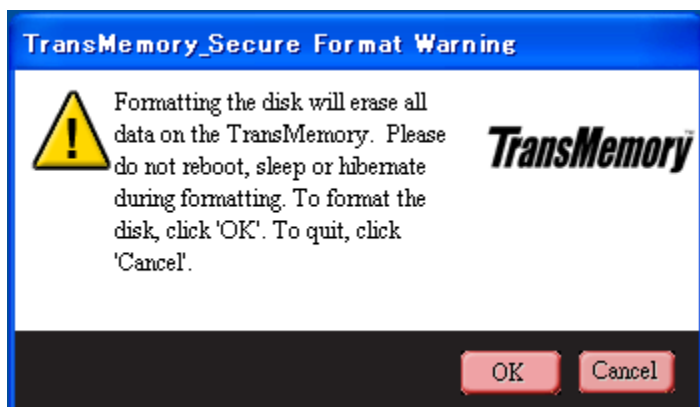


Note: You may choose a password of up to 16 characters using half-width alphanumeric (case sensitive). Please choose a password and hint that is easy for you to remember but difficult for others to guess.

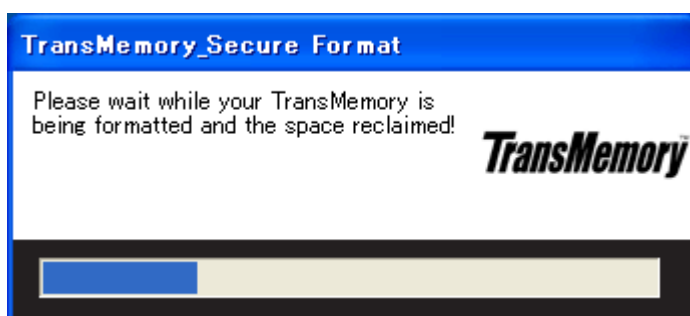
Note: If you forget your password, you will not be able to access any data you have saved in the Privacy Zone. In that case, follow the instructions in Section 1.2 to reformat the TransMemory™ Flash Drive and set a new password. All data stored in both the Privacy Zone and the Public Zone may be lost when the TransMemory™ Flash Drive is reformatted. When formatting using your computer's format command, only the Public Zone will be formatted, but not the Privacy Zone.

Note: The size of the Privacy Zone is limited to a maximum of 90% of the available memory (user area). The pink area denotes the Privacy Zone.

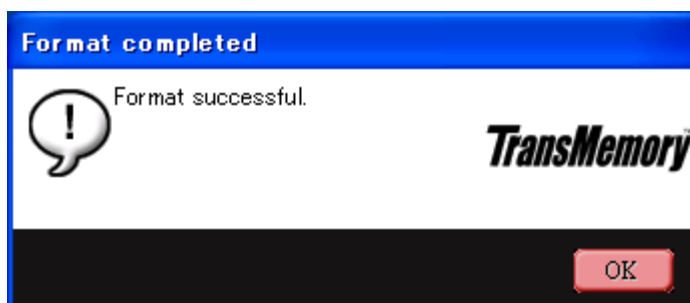
- 5) When the following dialog box appears, confirm that you have backed up all data on the TransMemory™ Flash Drive that you wish to keep, and then click on “OK”.



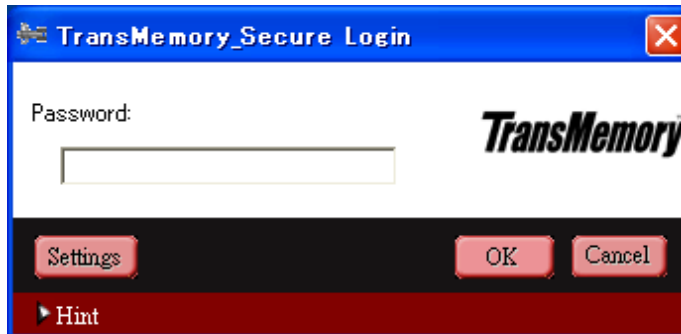
The following dialog box appears, then automatically disappears.



- 6) When the following dialog box appears, confirm and click on “OK”.



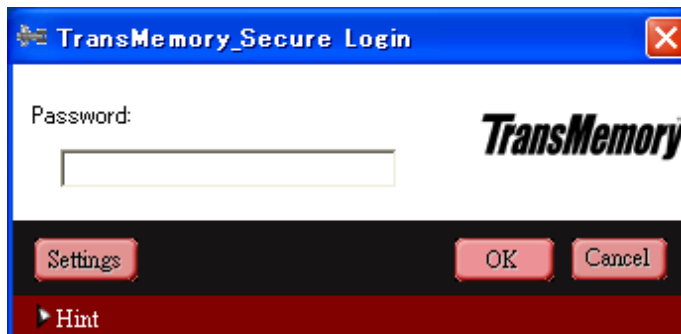
7) The following dialog box appears. The set-up is now complete.



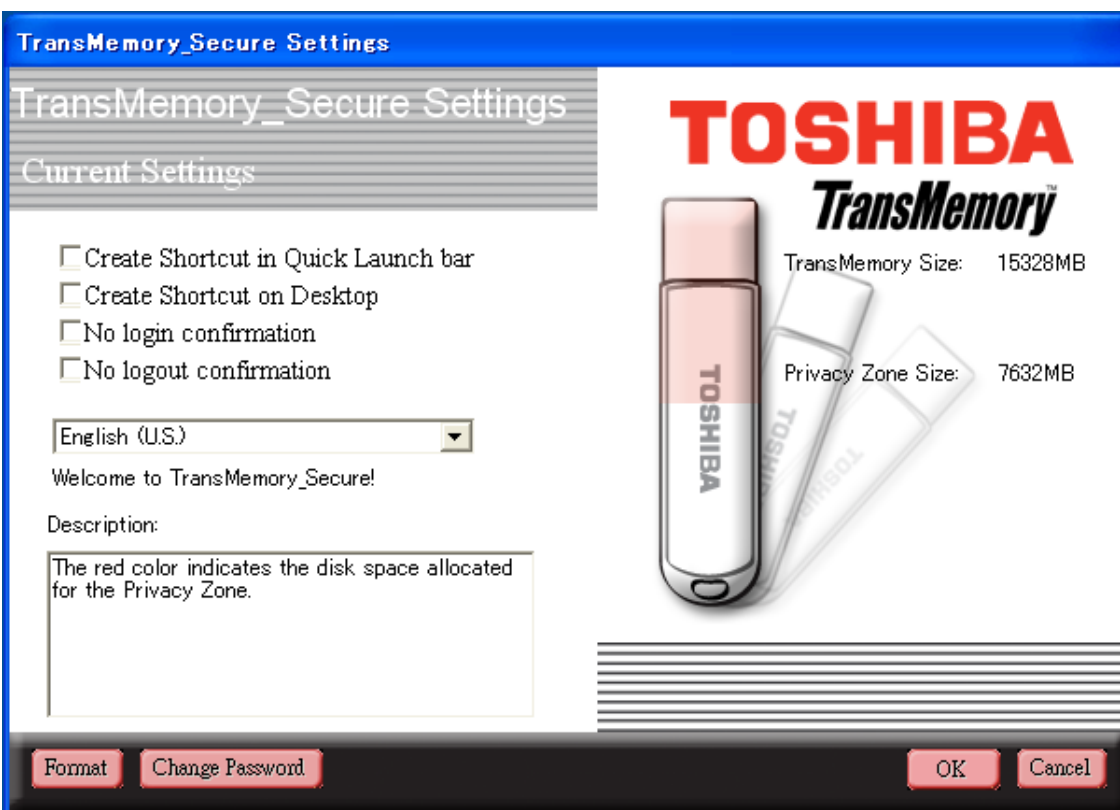
■ 1.3 Formatting using the Security software

Important Note: Reformatting the TransMemory™ Flash Drive or deleting data may not completely remove all data and/or data may be recoverable from the TransMemory™. Before transferring or destroying the TransMemory™ Flash Drive, the use of a product with the functionality to completely remove sensitive saved data, such as software for deleting data available from third-party vendors, is recommended.

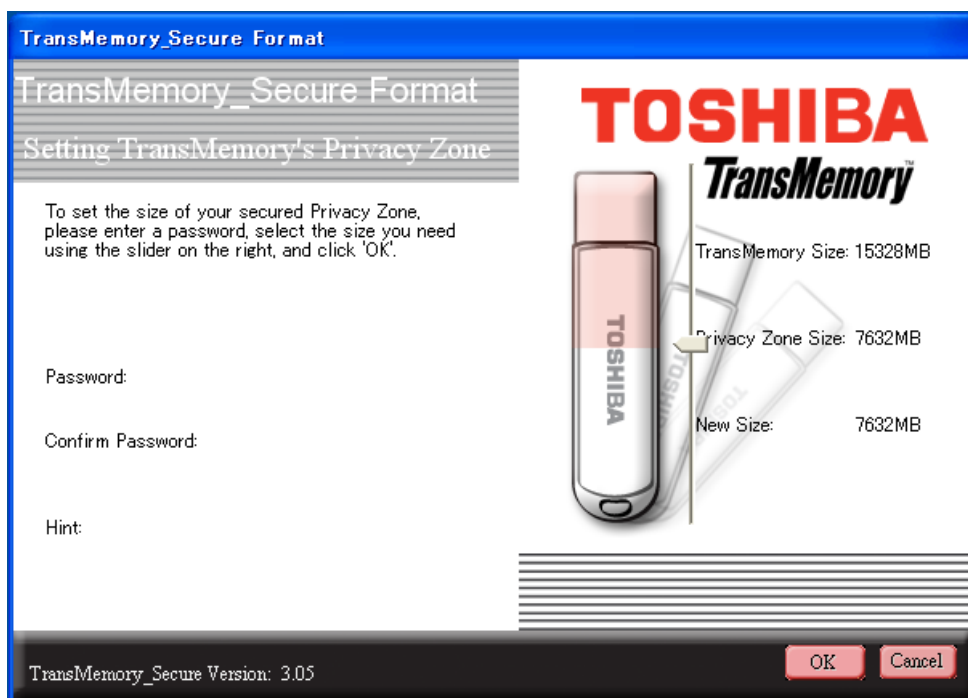
1) When the following dialog box appears, click on “Settings”.



- 2) When the following dialog box appears, click on “Format”.



- 3) When the following dialog box appears, slide the partition to determine the size of the Privacy Zone. Choose a password, reenter the password in the “Confirm Password” box, enter a “Hint” to yourself, and click on “OK”.

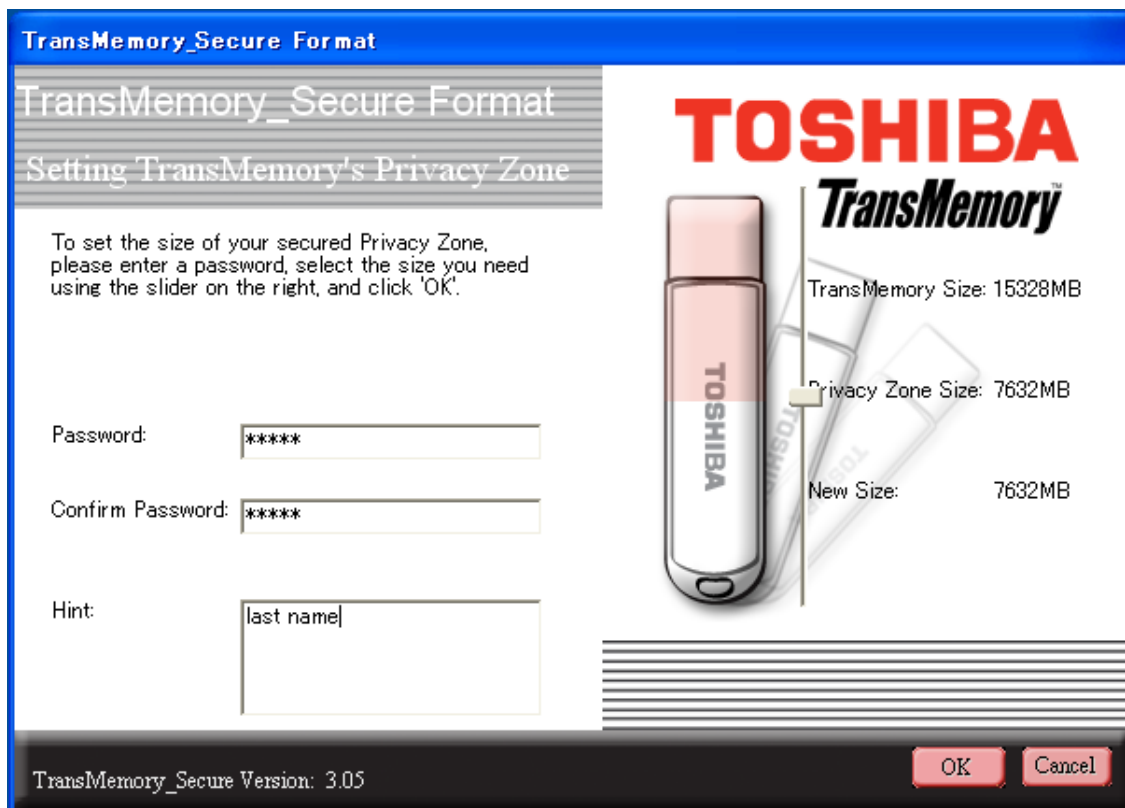


Note: You may choose a password of up to 16 characters using half-width alphanumerics (case sensitive). Please choose a password and hint that is easy for you to remember but difficult for others to guess.

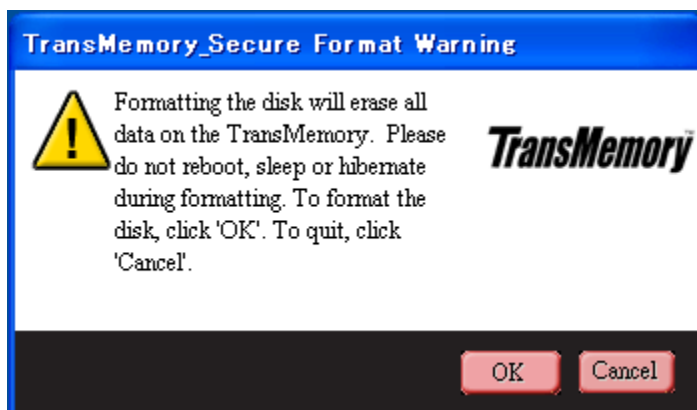
Note: If you forget your password, you will not be able to access any data you have saved in the Privacy Zone. In that case, follow the instructions in Section 1.2 to reformat the TransMemory™ Flash Drive and set a new password. All data stored in both the Privacy Zone and the Public Zone may be lost when the TransMemory™ Flash Drive is reformatted. When formatting using your computer's format command, only the Public Zone will be formatted, but not the Privacy Zone.

Note: The size of the Privacy Zone is limited to a maximum of 90% of the available memory (user area). The pink area denotes the Privacy Zone

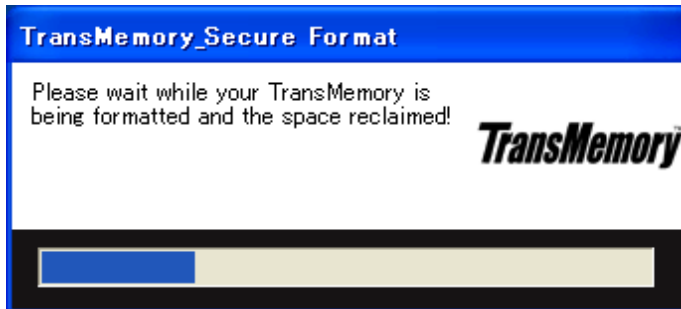
- 4) Determine the size of the Privacy Zone. Enter the “Password”, re-enter the “Confirm Password”, then a “Hint”, and click on “OK”.



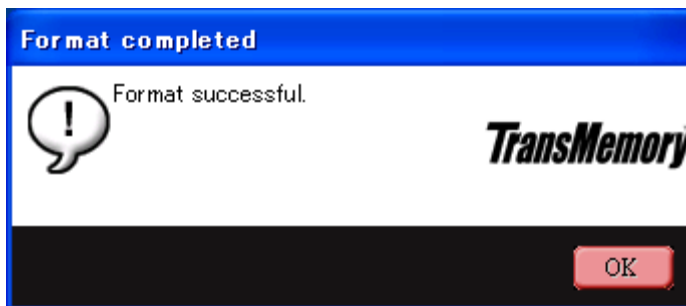
- 5) When the following dialog box appears, confirm that you have backed up all data on the TransMemory™ you wish to keep, and click on “OK”.



- 6) The following dialog box appears, then automatically disappears.



- 7) When the following dialog box appears, confirm and click on "OK" to complete formatting.

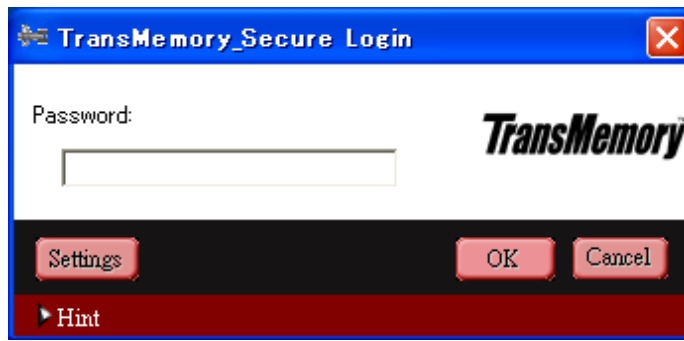


■ 2. Changing the Security Software Password and Log In/Log Out

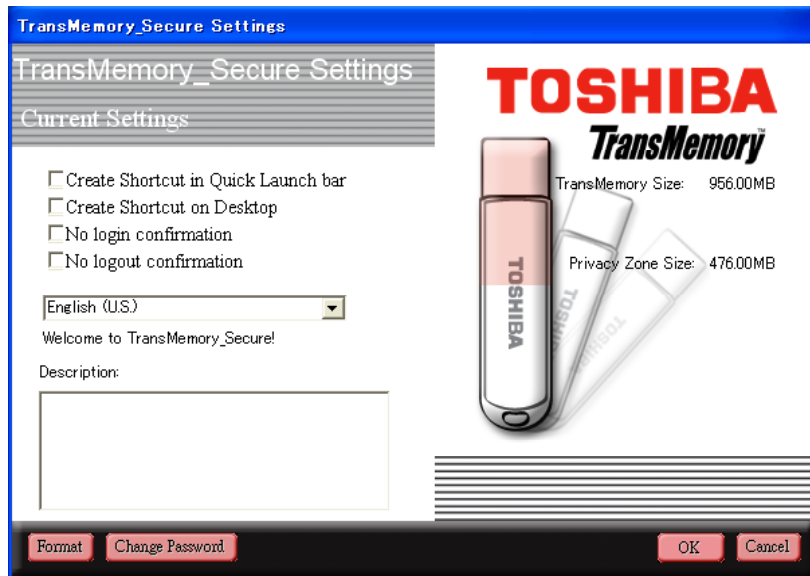
Be sure to connect the TransMemory™ Flash Drive to your computer before making security software password changes and before logging in and out of the Privacy Zone.

■ 2.1 Changing the password using the Security Software

- 1) When the following dialog box appears, click on “Settings”.



- 2) When the following dialog box appears, click on “Change Password”.



- 3) When the following dialog box appears, enter the “Old Password”, then the “New Password”, reenter the “Confirm New Password”, then a “Hint”.



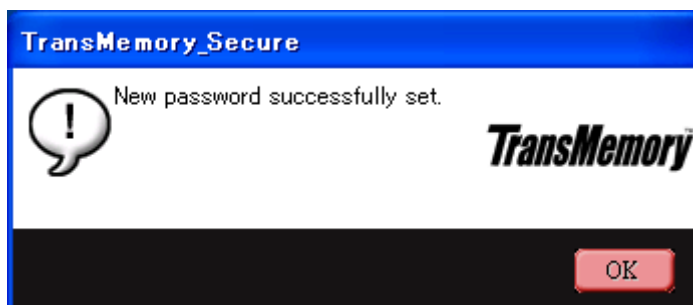
The screenshot shows a dialog box titled "TransMemory_Secure" with a blue header and a red close button. The main text reads: "To modify your password, please enter your current password, and then enter your new password in the fields provided. You may also enter a new hint for your new password. Click 'OK' to apply the changes or 'Cancel' to keep the current password." The TransMemory logo is visible on the right. Below the text are four input fields: "Old Password:", "New Password:", "Confirm New Password:", and "Hint:". At the bottom right are "OK" and "Cancel" buttons.

- 4) When the “Old Password”, “New Password”, “Confirm New Password”, and “Hint” have been entered, click on “OK”.



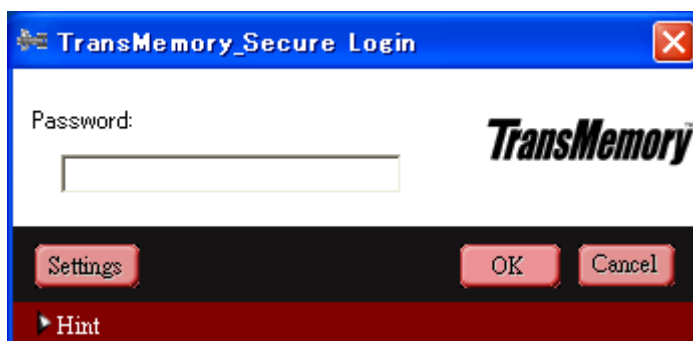
This screenshot shows the same "TransMemory_Secure" dialog box as above, but with the input fields filled. The "Old Password" field contains "*****", the "New Password" field contains "*****", the "Confirm New Password" field contains "*****", and the "Hint" field contains "last name". The "OK" and "Cancel" buttons are still present at the bottom right.

- 5) When the following dialog box appears, confirm and click on “OK”.

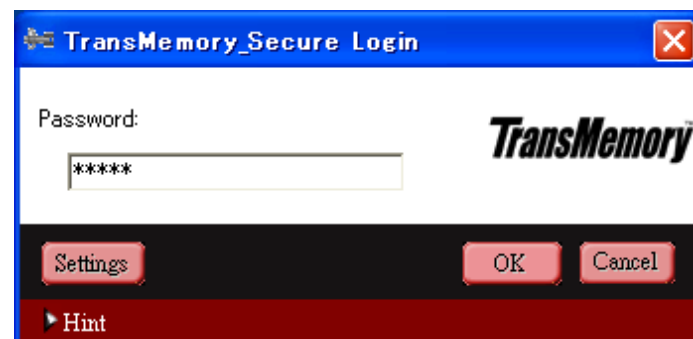


■ 2.2 Logging into the Privacy Zone using the Security Software

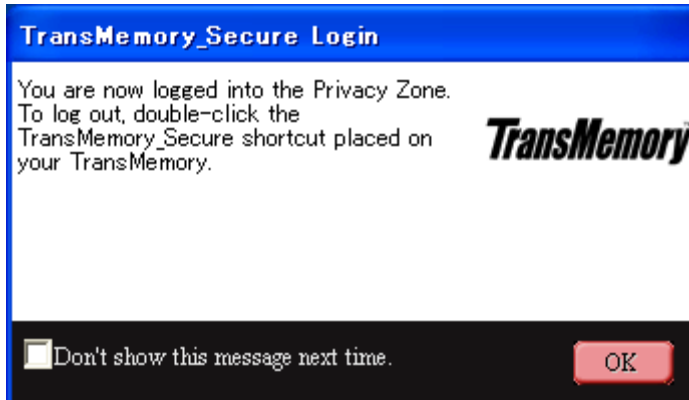
- 1) When the following dialog box appears, enter the “Password”.



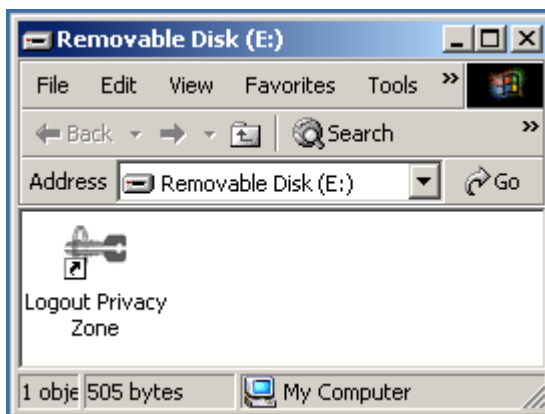
- 2) When the “Password” has been entered, click on “OK”.



- 3) When the following dialog box appears, confirm and click on “OK”.



- 4) When the following dialog box appears, logging into the Privacy Zone is complete.



■ 2.3 Logging out of the Privacy Zone using the Security Software

- 1) Double click on “Logout Privacy Zone” to log out.



- 2) When the following dialog box appears, click on “OK”.

