

BOHN

THE COLD STANDARD

BN-RCUTB

April 2007

(Replaces 503.4A, 04/03)

REMOTE INDOOR COMPRESSOR UNITS

Model SRN - Semi-Hermetic Reciprocating Compressor

Technical Guide

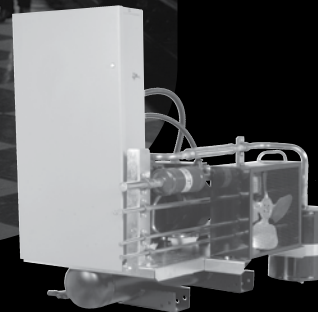
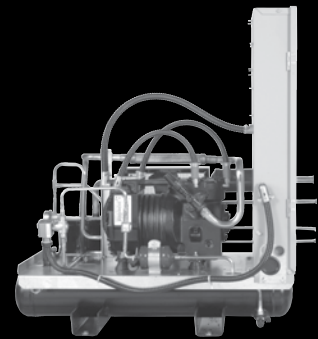
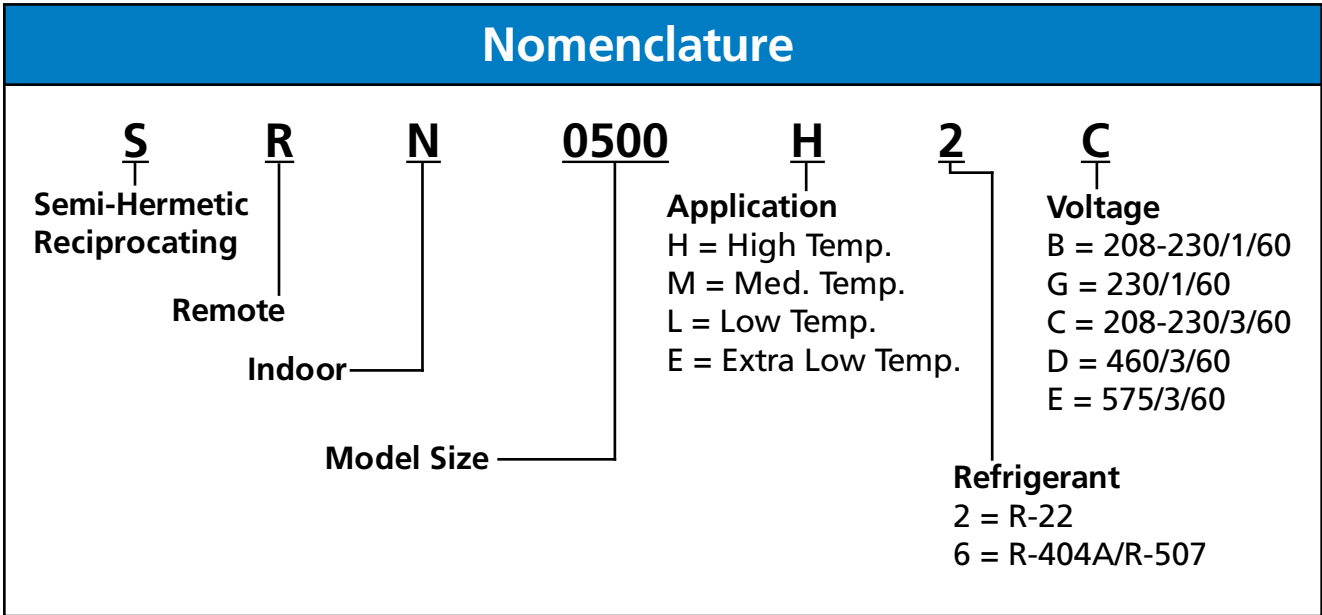
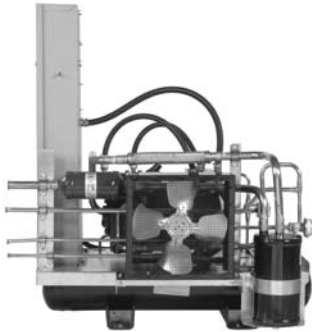


Table of Contents

Nomenclature	2
Features & Benefits	3-4
Performance Data, High & Medium Temperature (R-22/R-404A/R-507)	5
Performance Data, Low Temperature (R-404A/R-507)	6
Electrical Data	7-9
Physical Data	10-11



Standard Features & Benefits



- Pre-bent tubing reduces the possibility of leaks
- Spring mounted compressors with suction and discharge vibration eliminators (models 0499 and above)
- Fixed low pressure switch (adjustable on low temp models)
- Fixed high pressure switch
- Easy access refrigerant piping
- Pressure relief valve



- More spacious, pre-painted electrical box
- Pump down switch
- 230 volt control circuit transformer on 460 volt models



- Semi-hermetic reciprocating compressors
- Captive door fasteners
- Single electrical connection location
- Shipped with dry nitrogen charge
- Heavy duty base plate
- Plastic conduit on all wiring runs
- Receiver sized for 100 feet of liquid line capacity
- Sealed liquid line filter drier with sight glass
- Removable electrical box from compressor access from the front

NOTES: SRN pictured with optional suction accumulator, liquid solenoid valve, sealed suction filter and head pressure valve

Standard Features & Factory Installed Options

The indoor SRN remote compressor unit is specifically designed for use in supermarket, restaurant, warehouse and other commercial and industrial applications. The design focuses on ease of installation and maintenance along with the flexibility to fit most application requirements.

Standard Features

- Fixed low pressure switch (adjustable on low temp models)
- Fixed high pressure switch
- Pump down switch
- Compressor contactor and control circuit fusing
- 230V control circuit transformer on 460V units
- Removeable electrical box provides convenient front access to the oil pump and compressor
- Standard 16-3/4" tall box - (large 29-1/4" tall box is standard when defrost components are selected)
- Sealed liquid line filter drier and sight glass
- Oil pressure switch (when required)
- Shell and tube condenser with outlet shut-off valve, charging port and pressure relief device
- Solid mounted compressors (models up to 0400)
- Spring mounted compressors with suction and discharge vibration eliminators (models 0499 and above)
- Compressor head cooling fan (when required)
- Compressor solid state protection model (on units with 4D compressors)

Factory Installed Options

- Dual pressure switch
- Oil separator with discharge check valve and oil return hand valve
- Compressor and control circuit breaker
- Two tier rack
- Suction accumulator
- Sealed suction filter
- Replaceable core suction filter (0300-2200)
- Replaceable core liquid filter (0300-2200)
- Liquid line solenoid valve
- Spring mounted compressors with suction and discharge vibration eliminators (models 0075 to 0400)
- Crankcase heater
- Air defrost timer
- Electric defrost kit. Kit includes timer, evaporator fan contactor, defrost heater contactor(s), lockout relay and terminal block
- Remote load fusing for electric defrost kit. Includes evaporator fan motor and defrost heater fuses
- Fixed head pressure control valve
- Beacon II™ compatible (contact factory)
- Demand cooling for low temperature R-22 (contact factory)



Performance Data - High & Medium Temperature Models

R-22 Models - High & Medium Temperature

120°F Condensing Temperature, 8°F Subcooling

R-22 Model	Compressor	Capacity BTUH					
		Suction Temperature					
		15°F	20°F	25°F	30°F	35°F	40°F
SRN0075H2	KAN1-0075	4,460	5,190	5,970	6,810	7,730	8,750
SRN0075M2	KAE1-0075	5,580	6,320	7,110	-	-	-
SRN0090H2	KARA-010E	6,560	7,420	8,360	9,390	10,500	11,800
SRN0100H2	KAM1-0100	7,460	8,480	9,580	10,820	12,060	13,570
SRN0150H2	KAGA-0150	8,430	9,630	10,920	12,270	13,830	15,550
SRN0200H2	ERA1-0200	8,790	10,920	13,100	15,600	18,200	21,160
SRN0200M2	ERC1-0200	13,100	15,080	17,260	-	-	-
SRN0300H2	ERF1-0311	20,070	22,670	25,580	28,700	32,030	35,780
SRN0400H2	NRB2-0400	26,520	30,780	35,260	40,040	45,340	51,220
SRN0499H2	2DC3R53KE	31,620	36,300	41,290	46,700	52,520	58,860
SRN0500H2	2DD3R63KE	37,340	42,640	48,320	54,390	61,050	68,220
SRN0750H2	2DL3R78KE	48,050	54,500	61,380	68,850	76,860	85,590
SRN0760H2	2DA3R89KE	54,290	61,780	69,680	78,000	86,940	96,510
SRN0761H2	3DA3R10ME	67,390	75,710	84,740	94,430	105,040	116,480
SRN1000H2	3DB3R12ME	81,020	90,690	101,120	112,320	124,800	138,320
SRN1500H2	3DS3R17ME	108,160	120,640	134,160	148,720	165,360	182,000
SRN2000H2	4DA3R18ME	114,090	127,920	143,520	161,200	179,920	200,720

R-404A/R-507 Models - Medium Temperature

120°F Condensing Temperature, 8°F Subcooling

R-404A/R-507 Model	Compressor	Capacity BTUH					
		Suction Temperature					
		15°F	20°F	25°F	30°F	35°F	40°F
SRN0090M6	KARA-010E	6,910	7,780	8,880	-	-	-
SRN0199M6	KAKA-020E	11,450	12,850	14,150	-	-	-
SRN0200M6	ERCA-021E	14,470	16,310	18,480	-	-	-
SRN0310M6	ERFA-031E	21,380	24,080	27,080	-	-	-
SRN0500M6	2DC3R53KE	33,050	37,370	42,030	47,090	52,600	58,540

For additional capacity sizes and options, please contact the factory at 800-537-7775

Performance Data - Low Temperature Models

R-404A/R-507 Models - Low Temperature

110°F Condensing Temperature, 6°F Subcooling

R-404A/R-507 Model	Compressor	Capacity BTUH					
		Suction Temperature					
		-40°F	-30°F	-25°F	-20°F	-10°F	0°F
SRN0150L6	KALA-016E	2,790	4,620	5,510	6,470	8,480	11,020
SRN0200L6	EADA-020E	3,240	5,130	6,150	7,310	9,960	13,250
SRN0210L6	EAVA-021E	3,720	5,610	6,890	8,270	11,550	15,370
SRN0310L6	LAHA-032E	5,300	8,790	10,920	13,250	18,660	24,910
SRN0310E6	LACA-032E	7,930	11,960	14,310	17,070	-	-
SRN0311L6	2DF3F16KE	9,250	13,760	16,320	19,080	25,330	32,860
SRN0400L6	2DL3F20KE	11,670	16,890	19,820	23,110	30,530	39,330
SRN0599L6	2DA3F23KE	13,860	19,840	23,110	26,710	34,870	44,630
SRN0600L6	2DB3F25KE	14,580	21,030	24,700	28,620	37,520	48,120
SRN0601L6	3DA3F28KE	17,190	24,080	27,980	32,330	42,080	53,640
SRN0750L6	3DB3F33KE	20,490	28,810	33,390	38,370	49,710	63,280
SRN0900L6	3DF3F40KE	25,140	35,020	40,700	46,850	60,950	77,800
SRN1000L6	3DS3F46KE	28,520	39,690	46,000	52,890	68,260	86,180
SRN1500L6	4DL3F63KE	39,900	55,780	64,020	72,720	92,330	116,390
SRN2200L6	4DT3F76KE	45,370	65,300	75,790	86,710	110,880	138,750

For additional capacity sizes and options, please contact the factory at 800-537-7775

SRN Model - High & Medium Temperature

Electrical Data

Model	Power Supply	Compressor			Air Defrost/ Beacon II™		Electric Defrost - Low Amps				Electric Defrost - High Amps			
		Model	RLA	LRA	MCA	MOPD	Defrost Heater Amps*	Evap. Fan Amps	MCA	MOPD	Defrost Heater Amps*	Evap. Fan Amps	MCA	MOPD
SRN0075H2B	208-230/1/60	KAN2-0075	5.4	36.0	15.0	15	10 (1)	3	15.0	15	-	-	-	-
SRN0075H2C	208-230/3/60	KAN1-0075	3.1	19.9	15.0	15	10 (1)	3	15.0	15	-	-	-	-
SRN0075M2B	208-230/1/60	KAE2-0075	4.9	36.0	15.0	15	10 (1)	3	15.0	15	-	-	-	-
SRN0075M2C	208-230/3/60	KAE1-0075	3.0	19.9	15.0	15	10 (1)	3	15.0	15	-	-	-	-
SRN0090H2B	208-230/1/60	KARB-010E	6.4	40.0	15.0	15	10 (1)	3	15.0	15	-	-	-	-
SRN0090H2C	208-230/3/60	KARA-010E	3.8	27.0	15.0	15	10 (1)	3	15.0	15	-	-	-	-
SRN0090M6B	208-230/1/60	KARB-010E	6.4	40.0	15.0	15	10 (1)	3	15.0	15	-	-	-	-
SRN0090M6C	208-230/3/60	KARA-010E	3.8	27.0	15.0	15	10 (1)	3	15.0	15	-	-	-	-
SRN0100H2B	208-230/1/60	KAM2-0100	6.7	40.0	15.0	15	10 (1)	3	15.0	15	-	-	-	-
SRN0100H2C	208-230/3/60	KAM1-0100	4.0	27.0	15.0	15	10 (1)	3	15.0	15	-	-	-	-
SRN0100H2D	460/3/60	KAM1-0100	1.0	13.5	15.0	15	10 (1)	3	15.0	15	-	-	-	-
SRN0150H2B	208-230/1/60	KAGB-0150	8.6	55.0	15.0	15	20 (1)	6	25.0	25	40 (1)	12	50.0	500
SRN0150H2C	208-230/3/60	KAGA-0150	4.9	35.5	15.0	15	20 (1)	6	25.0	25	-	-	-	-
SRN0150H2D	460/3/60	KAGA-0150	2.2	18.2	15.0	15	10 (1)	3	15.0	15	-	-	-	-
SRN0199M6B	208-230/1/60	KAKB-021E	9.1	55.0	15.0	20	20 (1)	6	25.0	25	40 (1)	12	50.0	50
SRN0199M6C	208-230/3/60	KAKA-020E	5.8	50.0	15.0	15	20 (1)	6	25.0	25	-	-	-	-
SRN0200H2G	230/1/60	ERA1-0200	9.3	58.0	15.0	20	20 (1)	6	25.0	25	40 (1)	12	50.0	50
SRN0200H2C	208-230/3/60	ERA1-0200	5.9	46.0	15.0	15	20 (1)	6	25.0	25	-	-	-	-
SRN0200H2D	460/3/60	ERA1-0200	3.1	46.0	15.0	15	10 (1)	3	15.0	15	-	-	-	-
SRN0200H2E	575/3/60	ERA2-0200	3.1	23.0	15.0	15	8 (1)	3	15.0	15	-	-	-	-
SRN0200M2G	230/1/60	ERC1-0200	9.7	58.0	15.0	20	20 (1)	6	25.0	25	40 (1)	12	50.0	50
SRN0200M2C	208-230/3/60	ERC1-0200	6.1	46.0	15.0	15	20 (1)	6	25.0	25	-	-	-	-
SRN0200M2D	460/3/60	ERC2-0200	3.3	23.0	15.0	15	10 (1)	3	15.0	15	-	-	-	-
SRN0200M6C	208-230/3/60	ERCA-021E	7.9	46.0	15.0	15	20 (1)	6	25.0	25	-	-	-	-
SRN0300H2G	230/1/60	ERF2-0310	15.6	86.0	20.0	35	20 (1)	6	25.5	40	40 (1)	12	50.0	50
SRN0300H2C	208-230/3/60	ERF1-0311	11.2	82.0	15.0	25	20 (1)	6	25.0	30	40 (1)	12	50.0	50
SRN0300H2D	460/3/60	ERF1-0311	5.2	41.0	15.0	15	10 (1)	3	15.0	15	20 (1)	6	25.0	25
SRN0300H2E	575/3/60	ERF1-0300	4.7	30.0	15.0	15	8 (1)	3	15.0	15	16 (1)	5	20.0	20
SRN0310M6G	230/1/60	ERFB-031E	15.3	86.0	20.0	30	20 (1)	6	25.1	40	40 (1)	12	50.0	50
SRN0310M6C	208-230/3/60	ERFA-031E	11.2	82.0	15.0	25	20 (1)	6	25.0	30	40 (1)	12	50.0	50
SRN0310M6D	460/3/60	ERFA-031E	5.2	41.0	15.0	15	10 (1)	3	15.0	15	20 (1)	6	25.0	25
SRN0310M6E	575/3/60	ERFA-031E	4.5	30.0	15.0	15	8 (1)	3	15.0	15	16 (1)	5	20.0	20

*Number of defrost heater contactors in parentheses
 RLA - Rated Load Amps MCA - Minimum Circuit Ampacity
 LRA - Locked Rotor Amps MOPD - Maximum Overcurrent Protection Device

SRN Model - Low Temperature

Model	Power Supply	Compressor			Air Defrost/ Beacon II™		Electric Defrost - Low Amps				Electric Defrost - High Amps			
		Model	RLA	LRA	MCA	MOPD	Defrost Heater Amps*	Evap. Fan Amps	MCA	MOPD	Defrost Heater Amps*	Evap. Fan Amps	MCA	MOPD
SRN0150L6B	208-230/1/60	KALB-015E	8.9	55.0	15.0	20	20 (1)	6	25.0	25	-	-	-	-
SRN0150L6C	208-230/3/60	KALA-016E	5.0	50.0	15.0	15	20 (1)	6	25.0	25	-	-	-	-
SRN0150L6D	460/3/60	KALA-016E	3.1	25.0	15.0	15	10 (1)	3	15.0	15	-	-	-	-
SRN0200L6G	230/1/60	EADB-021E	9.0	58.0	15.0	20	20 (1)	6	25.0	25	-	-	-	-
SRN0200L6C	208-230/3/60	EADA-020E	6.1	46.0	15.0	15	20 (1)	6	25.0	25	-	-	-	-
SRN0210L6B	208-230/1/60	EAVB-021E	13.2	102.0	20.0	25	20 (1)	6	25.0	35	-	-	-	-
SRN0210L6C	208-230/3/60	EAVA-021E	6.6	50.0	15.0	15	20 (1)	6	25.0	25	-	-	-	-
SRN0210L6D	460/3/60	EAVA-021E	2.9	26.6	15.0	15	10 (1)	3	15.0	15	-	-	-	-
SRN0210L6E	575/3/60	EAVA-021E	2.8	20.0	15.0	15	8 (1)	3	15.0	15	-	-	-	-
SRN0310L6G	230/1/60	LAHB-032E	15.0	105.0	20.0	30	20 (1)	6	25.0	35	40 (1)	12	50.0	50
SRN0310L6C	208-230/3/60	LAHA-032E	11.5	112.0	15.0	25	20 (1)	6	25.0	30	40 (1)	12	50.0	50
SRN0310L6D	460/3/60	LAHA-032E	5.4	56.0	15.0	15	10 (1)	3	15.0	15	20 (1)	6	25.0	25
SRN0310L6E	575/3/60	LAHA-032E	3.7	30.0	15.0	15	8 (1)	3	15.0	15	16 (1)	5	20.0	20
SRN0310E6G	230/1/60	LACB-032E	13.9	105.0	20.0	30	20 (1)	6	25.0	35	40 (1)	12	50.0	50
SRN0310E6C	208-230/3/60	LACA-032E	11.5	112.0	15.0	25	20 (1)	6	25.0	30	40 (1)	12	50.0	50
SRN0310E6D	460/3/60	LACA-032E	5.4	56.0	15.0	15	10 (1)	3	15.0	15	20 (1)	6	25.0	25

For additional capacity sizes and options, please contact the factory at 800-537-7775

Electrical Data

SRN Model - High & Medium Temperature

Model	Power Supply	Compressor			Air Defrost/ Beacon II™		Electric Defrost - Low Amps				Electric Defrost - High Amps			
		Model	RLA	LRA	MCA	MOPD	Defrost Heater Amps*	Evap. Fan Amps	MCA	MOPD	Defrost Heater Amps*	Evap. Fan Amps	MCA	MOPD
SRN0400H2C	208-230/3/60	NRB2-0400	19.6	141.0	24.4	40	20 (1)	6	30.4	50	40 (1)	12	50.0	50
SRN0400H2D	460/3/60	NRB2-0400	10.1	62.5	15.0	20	10 (1)	3	20.0	25	20 (1)	6	25.0	25
SRN0400H2E	575/3/60	NRB2-0400	8.3	53.4	15.0	15	8 (1)	3	15.0	20	16 (1)	5	20.0	20
SRN0499H2C	208-230/3/60	2DC3R53KE	20.0	120.0	25.0	45	20 (1)	6	31.0	50	40 (1)	12	50.0	50
SRN0499H2D	460/3/60	2DC3R53KE	9.4	60.0	15.0	20	10 (1)	3	15.0	20	20 (1)	6	25.0	25
SRN0499H2E	575/3/60	2DC3R53KE	6.9	49.0	15.0	15	8 (1)	3	15.0	15	16 (1)	5	20.0	20
SRN0500H2C	208-230/3/60	2DD3R63KE	20.0	120.0	25.0	40	20 (1)	6	31.0	50	40 (1)	12	50.0	50
SRN0500H2D	460/3/60	2DD3R63KE	9.4	60.0	15.0	20	10 (1)	3	15.0	20	20 (1)	6	25.0	25
SRN0500H2E	575/3/60	2DD3R63KE	7.1	49.0	15.0	15	8 (1)	3	15.0	15	16 (1)	5	20.0	20
SRN0500M6C	208-230/3/60	2DC3R53KE	20.0	120.0	25.0	45	20 (1)	6	31.0	50	40 (1)	12	50.0	50
SRN0500M6D	460/3/60	2DC3R53KE	9.4	60.0	15.0	20	10 (1)	3	15.0	20	20 (1)	6	25.0	25
SRN0500M6E	575/3/60	2DC3R53KE	6.9	49.0	15.0	15	8 (1)	3	15.0	15	16 (1)	5	20.0	20
SRN0750H2C	208-230/3/60	2DL3R78KE	28.3	169.0	35.4	60	40 (1)	12	50.0	70	70 (2)	16	87.5	90
SRN0750H2D	460/3/60	2DL3R78KE	12.4	85.0	20.0	25	20 (1)	6	25.0	30	40 (1)	12	50.0	50
SRN0750H2E	575/3/60	2DL3R78KE	11.9	67.0	15.0	25	16 (1)	5	20.0	30	32 (1)	10	40.0	40
SRN0760H2C	208-230/3/60	2DA3R89KE	28.7	169.0	35.9	60	40 (1)	12	50.0	70	70 (2)	16	87.5	90
SRN0760H2D	460/3/60	2DA3R89KE	12.6	85.0	20.0	25	20 (1)	6	25.0	30	40 (1)	12	50.0	50
SRN0760H2E	575/3/60	2DA3R89KE	11.9	67.0	15.0	25	16 (1)	5	20.0	30	32 (1)	10	40.0	40
SRN0761H2C	208-230/3/60	3DA3R10ME	36.8	215.0	46.0	80	40 (1)	12	58.0	90	70 (2)	16	87.5	90
SRN0761H2D	460/3/60	3DA3R10ME	17.9	106.0	22.4	40	20 (1)	6	28.4	45	40 (1)	12	50.0	50
SRN0761H2E	575/3/60	3DA3R10ME	14.7	84.0	20.0	30	16 (1)	5	23.4	35	32 (1)	10	40.0	40
SRN1000H2C	208-230/3/60	3DB3R12ME	39.1	215.0	48.9	80	40 (1)	12	60.9	90	70 (2)	16	87.5	100
SRN1000H2D	460/3/60	3DB3R12ME	17.9	106.0	22.4	40	20 (1)	6	28.4	45	40 (1)	12	50.0	50
SRN1000H2E	575/3/60	3DB3R12ME	14.8	84.0	20.0	30	16 (1)	5	23.5	35	32 (1)	10	40.0	40
SRN1500H2C	208-230/3/60	3DS3R17ME	53.5	275.0	66.9	110	70 (2)	16	87.5	125	96 (2)	25	120.0	125
SRN1500H2D	460/3/60	3DS3R17ME	26.0	138.0	32.5	50	40 (1)	12	50.0	70	70 (2)	16	87.5	90
SRN1500H2E	575/3/60	3DS3R17ME	21.2	110.0	26.4	45	32 (1)	10	40.0	50	56 (2)	12	70.0	70
SRN2000H2C	208-230/3/60	4DA3R18ME	52.7	308.0	65.9	110	70 (2)	16	87.5	125	96 (2)	25	120.0	125
SRN2000H2D	460/3/60	4DA3R18ME	26.3	154.0	32.9	50	40 (1)	12	50.0	70	70 (2)	16	87.5	90
SRN2000H2E	575/3/60	4DA3R18ME	21.3	135.0	26.7	45	32 (1)	10	40.0	50	56 (2)	12	70.0	70

*Number of defrost heater contactors in parentheses

RLA - Rated Load Amps

MCA - Minimum Circuit Ampacity

LRA - Locked Rotor Amps

MOPD - Maximum Overcurrent Protection Device

For additional capacity sizes and options, please contact the factory at 800-537-7775

Electrical Data

SRN Model - Low Temperature

Model	Power Supply	Compressor			Air Defrost/ Beacon II™		Electric Defrost - Low Amps				Electric Defrost - High Amps			
		Model	RLA	LRA	MCA	MOPD	Defrost Heater Amps*	Evap. Fan Amps	MCA	MOPD	Defrost Heater Amps*	Evap. Fan Amps	MCA	MOPD
SRN0311L6G	230/1/60	2DF3F16KE	22.9	125.0	28.7	50	20 (1)	6	34.7	50	40 (1)	12	50.0	60
SRN0311L6C	208-230/3/60	2DF3F16KE	14.4	102.0	20.0	30	20 (1)	6	25.0	35	40 (1)	12	50.0	50
SRN0311L6D	460/3/60	2DF3F16KE	7.1	52.0	15.0	15	10 (1)	3	15.0	15	20 (1)	6	25.0	25
SRN0311L6E	575/3/60	2DF3F16KE	6.0	41.0	15.0	15	8 (1)	3	15.0	15	16 (1)	5	20.0	20
SRN0400L6C	208-230/3/60	2DL3F20KE	23.6	161.0	29.5	50	20 (1)	6	35.5	50	40 (1)	12	50.0	60
SRN0400L6D	460/3/60	2DL3F20KE	9.2	60.0	15.0	20	10 (1)	3	15.0	20	20 (1)	6	25.0	25
SRN0400L6E	575/3/60	2DL3F20KE	6.9	49.0	15.0	15	8 (1)	3	15.0	15	16 (1)	5	20.0	20
SRN0599L6C	208-230/3/60	2DA3F23KE	25.8	161.0	32.3	50	20 (1)	6	38.3	60	40 (1)	12	50.0	70
SRN0599L6D	460/3/60	2DA3F23KE	9.2	60.0	15.0	20	10 (1)	3	15.0	20	20 (1)	6	25.0	25
SRN0599L6E	575/3/60	2DA3F23KE	8.1	49.0	15.0	15	8 (1)	3	15.0	20	16 (1)	5	20.0	20
SRN0600L6C	208-230/3/60	2DB3F25KE	25.3	161.0	31.7	50	20 (1)	6	37.7	60	40 (1)	12	50.0	60
SRN0600L6D	460/3/60	2DB3F25KE	11.9	80.0	15.0	25	10 (1)	3	20.0	25	20 (1)	6	25.0	30
SRN0600L6E	575/3/60	2DB3F25KE	8.6	63.0	15.0	15	8 (1)	3	15.0	20	16 (1)	5	20.0	20
SRN0601L6C	208-230/3/60	3DA3F28KE	24.0	150.0	30.1	50	20 (1)	6	36.1	60	40 (1)	12	50.0	60
SRN0601L6D	460/3/60	3DA3F28KE	10.8	77.0	15.0	20	10 (1)	3	20.0	25	20 (1)	6	25.0	30
SRN0601L6E	575/3/60	3DA3F28KE	9.4	62.0	15.0	20	8 (1)	3	15.0	20	16 (1)	5	20.0	25
SRN0750L6C	208-230/3/60	3DB3F33KE	27.6	161.0	34.5	60	40 (1)	12	50.0	70	70 (2)	16	87.5	90
SRN0750L6D	460/3/60	3DB3F33KE	14.1	83.0	20.0	30	20 (1)	6	25.0	35	40 (1)	12	50.0	50
SRN0750L6E	575/3/60	3DB3F33KE	9.9	67.0	15.0	20	16 (1)	5	20.0	25	32 (1)	10	40.0	40
SRN0900L6C	208-230/3/60	3DF3F40KE	33.2	215.0	41.5	70	40 (1)	12	53.5	80	70 (2)	16	87.5	90
SRN0900L6D	460/3/60	3DF3F40KE	15.0	106.0	20.0	30	20 (1)	6	25.0	35	40 (1)	12	50.0	50
SRN0900L6E	575/3/60	3DF3F40KE	14.1	84.0	20.0	30	16 (1)	5	22.6	35	32 (1)	10	40.0	40
SRN1000L6C	208-230/3/60	SDS3F46KE	37.2	215.0	46.5	80	40 (1)	12	58.5	90	70 (2)	16	87.5	90
SRN1000L6D	460/3/60	SDS3F46KE	16.7	106.0	20.8	35	20 (1)	6	26.8	40	40 (1)	12	50.0	50
SRN1000L6E	575/3/60	SDS3F46KE	14.6	84.0	20.0	30	16 (1)	5	23.2	35	32 (1)	10	40.0	40
SRN1500L6C	208-230/3/60	4DL3F63KE	47.2	278.0	59.0	100	70 (2)	16	87.5	110	96 (2)	25	120.0	125
SRN1500L6D	460/3/60	4DL3F63KE	23.6	139.0	29.5	50	40 (1)	12	50.0	60	70 (2)	16	87.5	90
SRN1500L6E	575/3/60	4DL3F63KE	18.8	113.0	23.5	40	32 (1)	10	40.0	50	56 (2)	12	70.0	70
SRN2200L6C	208-230/3/60	4DT3F76KE	59.2	374.0	74.0	125	70 (2)	16	90.0	125	96 (2)	25	120.0	150
SRN2200L6D	460/3/60	4DT3F76KE	29.6	187.0	37.0	60	40 (1)	12	50.0	70	70 (2)	16	87.5	90
SRN2200L6E	575/3/60	4DT3F76KE	21.7	135.0	27.1	45	32 (1)	10	40.0	50	56 (2)	12	70.0	70

*Number of defrost heater contactors in parentheses

RLA - Rated Load Amps

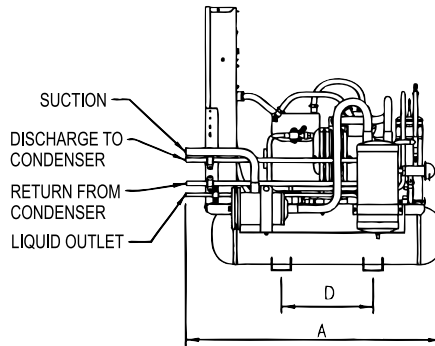
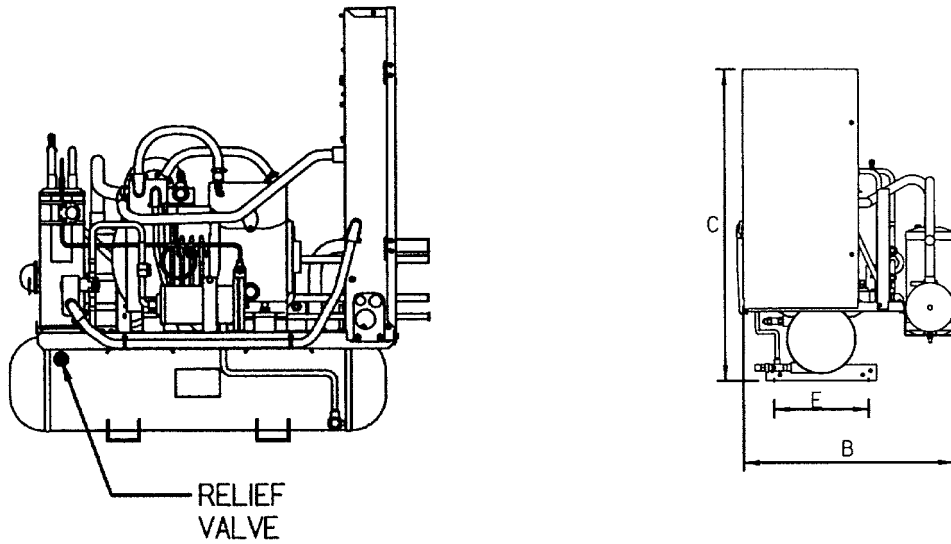
MCA - Minimum Circuit Ampacity

LRA - Locked Rotor Amps

MOPD - Maximum Overcurrent Protection Device

For additional capacity sizes and options, please contact the factory at 800-537-7775

Physical Data



Maximum Dimensions with Options

Horsepower	A	B	C	D	E
3/4 to 2	35"	23-3/4"	36-3/8"	13-1/2"	12"
3 to 4	40"	26-3/4"	39-1/4"	13-1/2"	12"
5 to 6	42-1/2"	30-3/8"	39-1/4"	13-1/2"	12"
7-1/2 to 22	47"	35-3/8"	43-1/2"	24"	12"

NOTES: Please refer to submittal drawings for exact model dimensions

Physical Data

SRN Model - High & Medium Temperature

Model	Compressor	Connections (in.)				90% Rec. Capacity (Lbs.)	Dimensions (in.)			Approx. Net Wt. (Lbs.)
		Suction	Discharge	Liquid Line	Condenser Return		H	W	D	
SRN0075H2	KAN1-0075	5/8	3/8	3/8	3/8	30	36.38	23.75	35.0	155
SRN0075M2	KAE1-0075	5/8	3/8	3/8	3/8	30	36.38	23.75	35.0	155
SRN0090H2	KARA-010E	5/8	1/2	3/8	3/8	30	36.38	23.75	35.0	160
SRN0090M2	KARA-010E	7/8	1/2	3/8	3/8	26	36.38	23.75	35.0	160
SRN0100H2	KAM1-0100	7/8	1/2	3/8	3/8	30	36.38	23.75	35.0	160
SRN0150H2	KAGA-0150	7/8	1/2	3/8	3/8	30	36.38	23.75	35.0	175
SRN0199M2	KAKA-020E	7/8	1/2	3/8	1/2	26	36.38	23.75	35.0	200
SRN0200H2	ERA1-0200	7/8	1/2	3/8	1/2	30	36.38	23.75	35.0	245
SRN0200M2	ERC1-0200	7/8	1/2	3/8	1/2	30	36.38	23.75	35.0	245
SRN0200M6	ERCA-021E	7/8	1/2	3/8	1/2	26	36.38	23.75	35.0	245
SRN0300H2	ERF1-0311	1-1/8	5/8	1/2	5/8	66	39.25	26.75	40.0	305
SRN0310M6	ERFA-031E	1-1/8	5/8	1/2	5/8	57	39.25	26.75	40.0	305
SRN0400H2	NRB2-0400	1-1/8	5/8	1/2	5/8	66	39.25	26.75	40.0	360
SRN0499H2	2DC3R53KE	1-3/8	7/8	5/8	5/8	66	39.25	26.75	40.0	375
SRN0500H2	2DD3R63KE	1-3/8	7/8	5/8	5/8	66	39.25	30.38	42.5	375
SRN0500M6	2DC3R53KE	1-3/8	7/8	5/8	5/8	57	39.25	30.38	42.5	375
SRN0750H2	2DL3R78KE	1-3/8	7/8	5/8	7/8	122	43.5	35.38	47.0	385
SRN0760H2	2DA3R89KE	1-3/8	7/8	5/8	7/8	122	43.5	35.38	47.0	385
SRN0761H2	3DA3R10ME	1-3/8	1-1/8	5/8	7/8	122	43.5	35.38	47.0	385
SRN1000H2	3DB3R12ME	1-5/8	1-1/8	7/8	7/8	122	43.5	35.38	47.0	595
SRN1500H2	3DS3R17ME	1-5/8	1-1/8	7/8	1-1/8	171	43.5	35.38	47.0	615
SRN2000H2	4DA3R18ME	1-5/8	1-3/8	7/8	1-1/8	171	43.5	35.38	47.0	665

SRN Model - Low Temperature

Model	Compressor	Connections (in.)				90% Rec. Capacity (Lbs.)	Dimensions (in.)			Approx. Net Wt. (Lbs.)
		Suction	Discharge	Liquid Line	Condenser Return		H	W	D	
SRN0150L6	KALA-016E	7/8	1/2	3/8	3/8	26	36.38	23.75	35.0	175
SRN0200L6	EADA-020E	7/8	1/2	3/8	1/2	26	36.38	23.75	35.0	305
SRN0210L6	EAVA-021E	7/8	1/2	3/8	1/2	26	36.38	23.75	35.0	305
SRN0310L6	LAHA-032E	1-1/8	5/8	1/2	5/8	26	39.25	26.75	40.0	305
SRN0310E6	LACA-032E	1-1/8	5/8	1/2	5/8	26	39.25	26.75	40.0	305
SRN0311L6	2DF3F16KE	1-3/8	7/8	1/2	5/8	57	39.25	26.75	40.0	320
SRN0400L6	2DL3F20KE	1-3/8	7/8	1/2	5/8	57	39.25	26.75	40.0	360
SRN0599L6	2DA3F23KE	1-3/8	7/8	5/8	5/8	57	39.25	30.38	42.5	390
SRN0600L6	2DB3F25KE	1-3/8	7/8	5/8	5/8	57	39.25	30.38	42.5	390
SRN0601L6	3DA3F28KE	1-3/8	1-1/8	5/8	5/8	57	39.25	30.38	42.5	405
SRN0750L6	3DB3F33KE	1-5/8	1-1/8	5/8	7/8	106	43.5	35.38	47.0	385
SRN0900L6	3DF3F40KE	1-5/8	1-1/8	5/8	7/8	106	43.5	35.38	47.0	465
SRN1000L6	3DS3F46KE	1-5/8	1-1/8	7/8	7/8	106	43.5	35.38	47.0	595
SRN1500L6	4DL3F63KE	2-1/8	1-1/8	7/8	7/8	106	43.5	35.38	47.0	655
SRN2200L6	4DT3F76KE	2-1/8	1-1/8	7/8	7/8	106	43.5	35.38	47.0	725

NOTES: Receiver refrigerant holding capacity refers to the weight of the type of refrigerant indicated by the model number (i.e. H2, M2 = R-22; M6, L6, E6 = R-404A/R-507)

Dimensions are maximum dimensions with options. Please refer to submittal drawings for specific model dimensions

For additional capacity sizes and options, please contact the factory at 800-537-7775



For more information on Bohn refrigeration products, contact your Sales Representative or visit us at www.thecoldstandard.com.



A Brand of Heatcraft Refrigeration Products LLC
2175 West Park Place Blvd. • Stone Mountain, GA • 30087
(800) 537-7775 • FAX (770) 465-5990

www.thecoldstandard.com

Since product improvement is a continuing effort, we reserve the right to make changes in specifications without notice.

BN-RCUTB-0407 | Version 001