

OWNER'S MANUAL



ECONO-MIZER GRAIN SPREADERS

Models 982, 986 & 996

PNEG-1139

Date: 10-8-07



PNEG-1139

SAFETY GUIDELINES

This manual contains information that is important for you, the owner/operator, to know and understand. This information relates to protecting **personal safety** and **preventing equipment problems**. It is the responsibility of the owner/operator to inform anyone operating or working in the area of this equipment of these safety guidelines. To help you recognize this information, we use the symbols that are defined below.

Please read the manual and pay attention to these sections. Failure to read this manual and its safety instructions is a misuse of the equipment and may lead to serious injury or death.



This is the safety alert symbol. It is used to alert you to potential personal injury hazards. Obey all safety messages that follow this symbol to avoid possible injury or death.

**DANGER**

DANGER indicates an imminently hazardous situation which, if not avoided, will result in death or serious injury.

**WARNING**

WARNING indicates a potentially hazardous situation which, if not avoided, could result in death or serious injury.

**CAUTION**

CAUTION indicates a potentially hazardous situation which, if not avoided, may result in minor or moderate injury.

**CAUTION**

CAUTION used without the safety alert symbol indicates a potentially hazardous situation which, if not avoided, may result in property damage.

**NOTE**

NOTE indicates information about the equipment that you should pay special attention to.

⚠ CAUTION ⚠

1. Disconnect all power before servicing or adjusting. Have bin properly grounded.
2. Do not enter a bin while the unit is operating without proper eye protection.
3. Do not attempt to service or adjust the unit from a ladder unless the ladder is secured to another piece of equipment or to the bin. The grain spreader can swing and will not support a ladder. Be sure electrical power is disconnected.
4. Power cords, plug and receptacles should be the grounded type to prevent injury.
5. All wiring should be done according to the National Electric Code and by a qualified electrician.
6. Read and understand the operator's manual.

WARNING:
Failure to follow these instructions may result in personal injury or property damage.

SPREADING CAPACITIES			
Econo-Mizer	982	986	996
Heavy Grain 2500 BPH	18'-30'	31'-48'	31'-48' 3500 BPH
Heavy Grain 3500 BPH	18'-27'	28'-42'	28'-42' 5000 BPH
Light Grain 3500 BPH	18'-24'	25'-36'	25'-36' 5000 BPH

Installation

Figure 1: Hanger Brackets and Chains

The hanger brackets should be positioned equally spaced around the outer fill hole lip of the bin. Do not tighten the bracket hardware until the spreader has been installed and leveled. Hang the spreader from these brackets by hooking the two chains that are attached to each of the spreader support arms to two adjacent hanger brackets. When properly hung, each set of chains will form a "V" and will restrict random movement of the spreader.

The spreader can be installed at various heights in the bin depending on the bin diameter and roof angle. The spreader should be installed as level as possible by checking with a level and adjusting the position of the hanger brackets and/or the lengths of the chains.

Finish the installation by securely tightening the hanger brackets.

Wiring: Refer to the Wiring Diagram and Tables A & B on the next page.

ADJUSTMENT & OPERATION

Figure 2: Slide Gate Adjustment

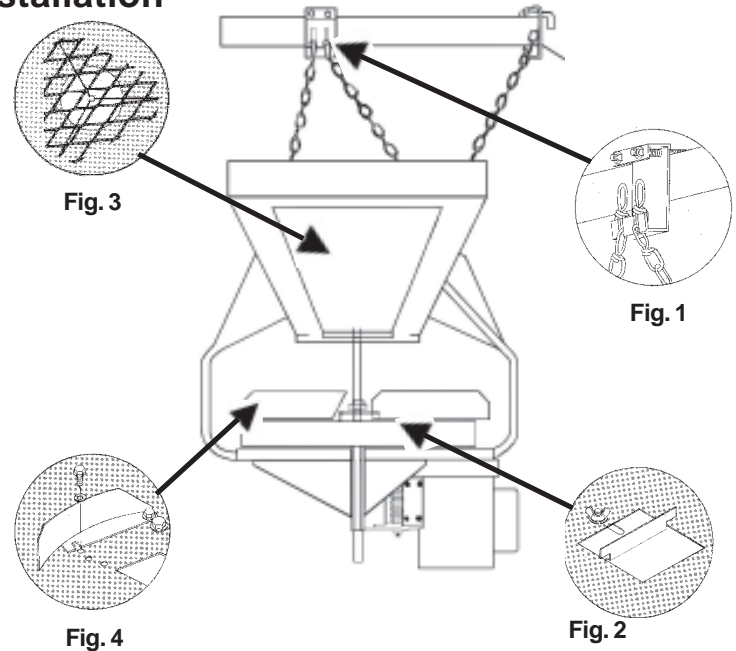
The slide gates are provided in the pan to allow grain to be spread in the center of the bin. These are usually to be open wider for smaller diameter bins.

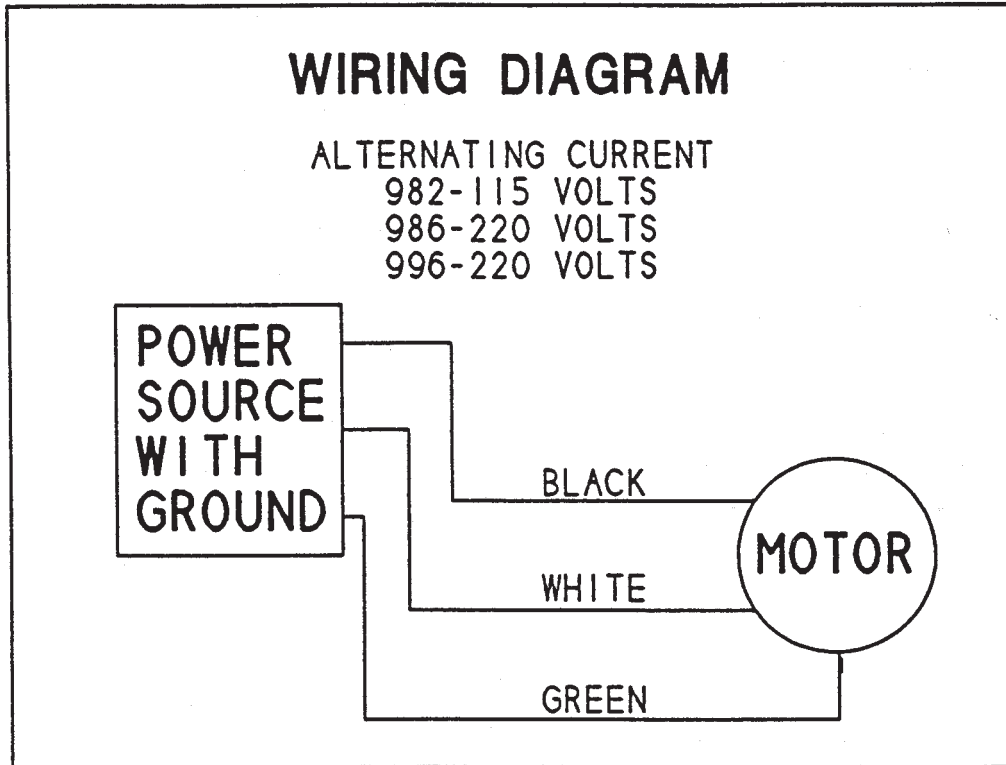
Figure 3: Center Cone Adjustment

It is important that the incoming grain be directed onto the center of the baffle cone in order to disperse the grain evenly in the hopper. This cone functions as a flow control and can be adjusted by lifting it from the spreader and placing the hairpin clip in one of the holes in the baffle post. The cone needs to be adjusted higher above the spreader pan for greater capacities and lower for lesser rates. Best spreading results are obtained when the cone is adjusted to maintain a cushion of grain in the hopper.

Item 4: Slinger Adjustment

982, 986 & 996 Econo-Mizers have slingers that can be adjusted to accommodate various sizes of bins and grain densities. The slingers will throw grain farther when in the most advanced position (hole #1) and will not throw as far when in the swept back position (hole #3). A guide line to use for adjusting is to use the third hole for 18 foot diameter bins, the middle hole for 24 - 30 foot bins and the first hole for 33 foot and larger bins.





INSTALLATION

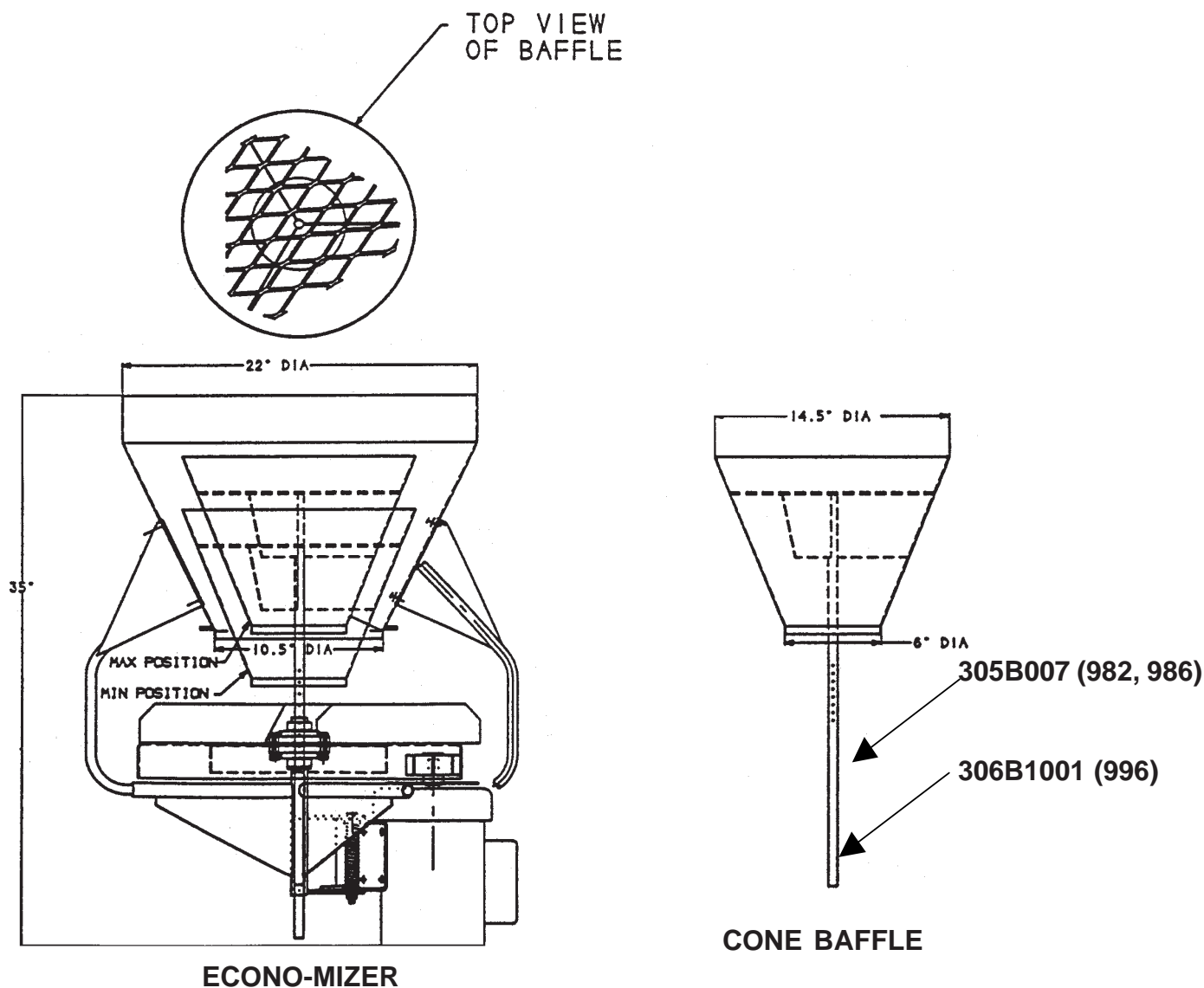
Use **Tables A & B** to determine the proper size of fuse protection and the length and size of wiring required. Portable extension cords, if used, should be as short as possible to minimize voltage drop. Cords that are too long, or cords that are made of inadequate wire gauge, can cause the motor to fail.

TABLE A (WIRE SIZE)				
MOTOR	DISTANCE			
	25 FT	50 FT	100 FT	200 FT
982 (1/3 hp-115V)	#18 GA	#16 GA	#12 GA	#10 GA
986 (1 HP-230V)	#14 GA	#14 GA	#12 GA	#10 GA
996 (1-1/2 hp-220V)	#14 GA	#14 GA	#12 GA	#10 GA

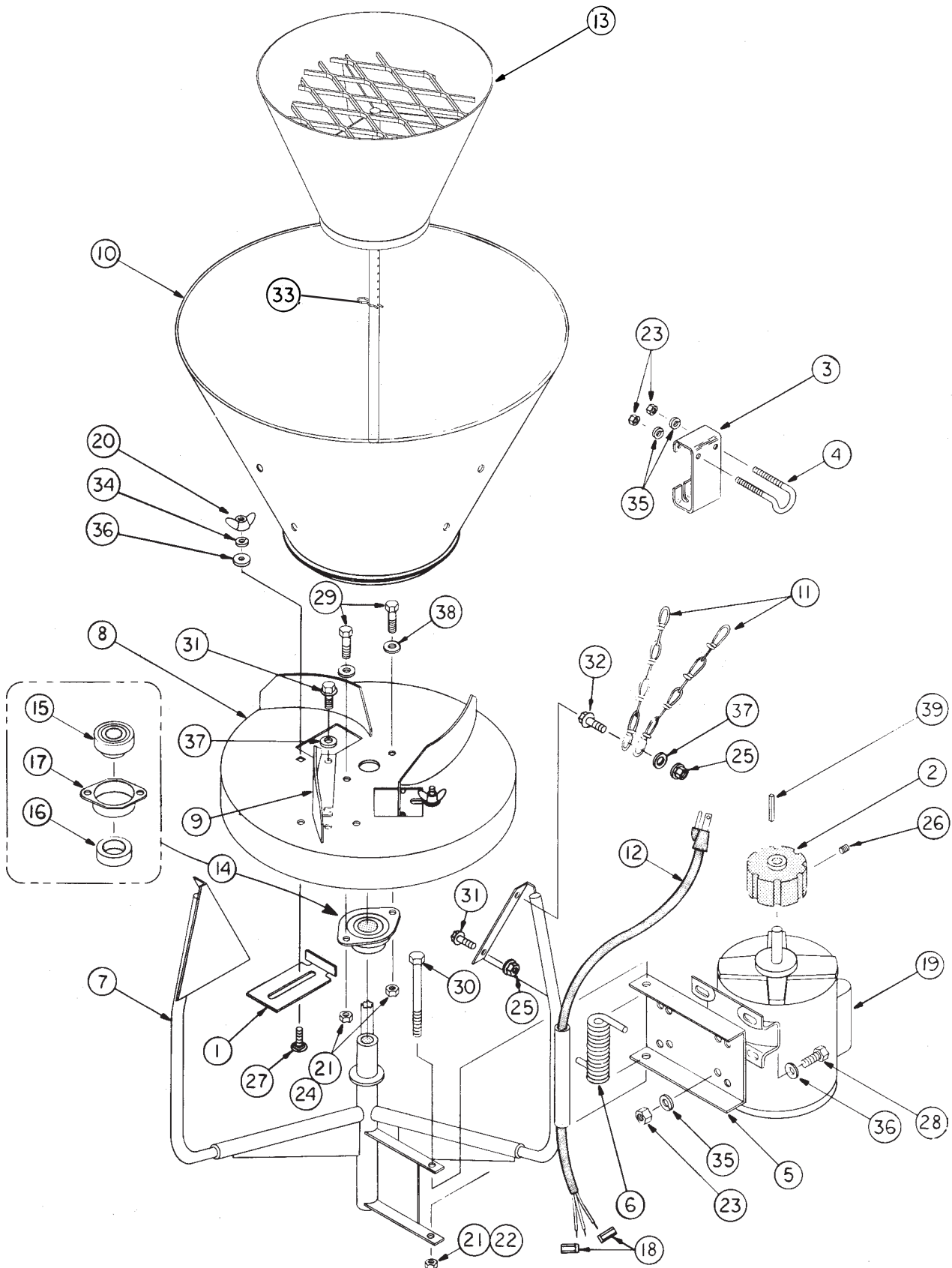
TABLE B (FUSE SIZE)		
MOTOR	TYPE OF FUSE	
	NON-TIME DELAY	DUAL ELEMENT TIME DELAY
982 (1/3 hp-115V)	15	12
986 (1 HP-230V)	15	12
996 (1-1/2 hp-220V)	20	15

ADJUSTMENT & OPERATION OF CONE HOPPER BAFFLE

The cone hopper baffle is used to restrict the entering grain and slow it down enough to ensure that the cone will always be full and overflowing with grain. The cone baffle should be adjusted high enough above the spreading pan to allow the overflowing grain to flow between the hopper and the cone baffle and to not flow over the sides of the main hopper. Entering grain should be directed onto the expanded metal restrictor on top of the cone baffle.



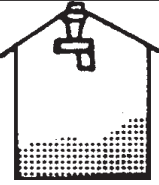
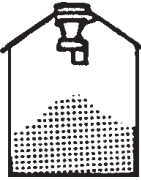
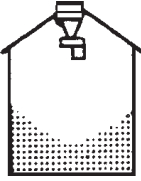
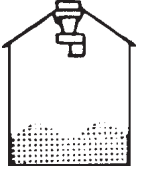
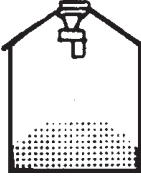
Models 982, 986, & 996 Econ-Mizer Grain Spreaders



MODELS 982, 986 & 996 ECONO-MIZER GRAIN SPREADERS PARTS LIST

Models 982, 986, & 996 Econo-Mizer Grain Spreader Part Lists							
Ref. No.	Part No.	Part No.	Part No.	No. Req.			Description
	982	986	996	982	986	996	
1	301A0110	301A0110	301A0110	2	1	1	Slide Gate
2	301A0122	302A0313	302A0313	1	1	1	Rubber Drive wheel
3	301B0220	301B0220	301B0220	3	3	3	Hanger Bracket
4	301B0221	301B0221	301B0221	3	3	3	Hanger U-Bolt Hook
5	302A0304	302A0304	302A0304	1	1	1	Motor Mount Plate
6	302A0311	302A0311	302A0311	1	1	1	Torsion Spring
7	304A0002	305A002	305A002	1	1	1	Hopper Base & Braces
8	304A0005	305A005	305A005	1	1	1	Pan with Slingers
9	304A0015	305A012	305A012	1	2	2	Adjustable Slinger
10	304B0001	304B0001	3061010	1	1	1	Hopper
11	304B0006	305B004	305B004	6	6	6	Support Chain
12	304N0004	----	----	1	-	-	115V Power Cord with Loose Clips
	----	305N005	305N005	-	1	1	220V Power Cord with Loose Clips
13	305B007	305B007	3061001	1	1	1	Hopper Baffle
14	PT0106	PT0109	PT0109	1	2	2	1" Bearing with Cast Housing
15	PT0202	PT0215	PT0215	1	2	2	1" Bearing with Locking Collar
16	PT0401	PT0401	PT0401	1	2	2	1" Locking Collar
17	PT0415	----	----	1	-	-	Bearing Housing-2 Hole
18	1EL0530	1EL0530	1EL0530	2	2	2	Flag Quick Disconnect Clip
19	3EL5055	----	----	1	-	-	1/3 HP 115V
	----	----	3EL 5088	-	-	1	1-1/2 HP 230V TENV Motor
	----	3EL5082	----	-	1	-	1HP TENV Motor
20	S-4198	S-4198	S-4198	2	1	1	1/4" Wingnut
21	S-4663	----	S-4663	3	-	1	3/8" Hex Lock Nut
22	----	S-4663	----	-	1	-	3/8" Hex Lock Nut
23	S-396	S-396	S-396	10	10	10	5/16" Hex Nut
24	----	S-4663	S-4663	-	2	2	3/8" Hex Nut
25	S-3611	S-3611	S-3611	6	6	6	5/16" Hex Flange Lock Nut
26	S-7186	S-7186	S-7186	2	2	2	1/4" x 1/4" Socket Hd Set Screw
27	S-6369	S-6369	S-6369	2	1	1	1/4" x 3/4" Carraige Bolt
28	S-8072	S-8072	S-8072	4	4	4	5/16" x 3/4" Hex Hd Bolt
29	S-7105	----	----	2	-	-	3/8" x 3/4" Hex Hd Bolt
	----	S-7521	S-7521	-	2	2	3/8" x 1" Hex Hd Bolt
30	S-7744	S-7744	S-7744	1	1	1	3/8" x 5-1/2" Hex Hd Bolt
31	2FH0988	2FH0988	2FH0988	5	7	7	5/16" x 1/2" Hex Flange Whiz Lock Screw
32	S-6606	S-6606	S-6606	3	3	3	5/16" x 3/4" Hex
33	3FH0769	3FH0769	3FH0769	1	1	1	.08" x 1-5/8" Hair Pin
34	S-2041	S-2041	S-2041	2	1	1	1/4" Lockwasher
35	S-1147	S-1147	S-1147	10	10	10	5/16" Lockwasher
36	S-1430	S-1430	S-1430	6	5	5	1/4" Lockwasher
37	S-1937	S-1937	S-1937	5	7	7	5/16" SAE Flat Washer
38	S-7409	----	----	2	-	-	3/8" SAE Flat Washer
	----	S-1054	S-1054	-	2	2	3/8" Lock Washer
39	S-6371	----	----	1	-	-	1/8" x 1" Square Key
	----	S-8426	S-8426	-	1	2	1" x 3/16" Square Key

TROUBLE SHOOTING

PROBLEM	CORRECTION
<p>Grain is high on one side of bin.</p> 	<p>a. Spreader is not hung level. b. Grain is not hitting the center of the baffle c. The baffle is too high causing the grain to slide off one side. d. The flow of grain is not adequate to fill the center hopper, see instructions for cone baffle hopper.</p>
<p>Grain is high at the center of bin.</p> 	<p>a. Slide gate is open too far. b. Check to make sure spreader is running. c. Grain is overflowing the main hopper - raise center baffle or slow grain flow rate.</p>
<p>Grain is low at the center of bin.</p> 	<p>a. Slide gate is not open enough. b. Slingers on pan are set too far out.</p>
<p>Grain forms "donut" a few feet from wall.</p> 	<p>a. Slingers on pan are set too far out (grain is hitting the wall and bouncing back). b. Open slide gate to fill center of bin. c. Spreader model is not adequate for bin size.</p>
<p>Grain not getting all the way to wall.</p> 	<p>a. Spreader pan is turning the wrong direction: Pan should turn clockwise when viewed from the top. b. Rubber drive wheel is slipping - replace if badly worn. c. Spreader is hanging too high in the center of the bin. d. Spreader model is not adequate for bin size.</p>
<p>Spreader swings when starting.</p>	<p>a. Hanging chains are not installed correctly - they should be equally spaced and positioned as in Figure 2 of installation instructions.</p>
<p>Spreader does not run.</p>	<p>a. Rubber drive wheel may be slipping due to excessive moisture or broken motor mount spring. b. Motor overload may have tripped. It will reset automatically after the motor has cooled. c. Blown fuse or circuit breaker. d. Too much voltage drop. See Table A for proper wiring size.</p>
<p>Spreader pan slows down when loaded.</p>	<p>a. Spreader pan is turning the wrong direction: Pan should turn clockwise when viewed from the top.</p>

The GSI Group, Inc. Warranty

THE GSI GROUP, INC. ("GSI") WARRANTS ALL PRODUCTS WHICH IT MANUFACTURES TO BE FREE OF DEFECTS IN MATERIAL AND WORKMANSHIP UNDER NORMAL USAGE AND CONDITIONS FOR A PERIOD OF 12 MONTHS AFTER RETAIL SALE TO THE ORIGINAL END USER. THE PURCHASER'S SOLE REMEDY AND GSI'S ONLY OBLIGATION SHALL BE TO REPAIR OR REPLACE, AT GSI'S OPTION AND EXPENSE, PRODUCTS THAT, IN GSI'S SOLE JUDGMENT, CONTAIN A MATERIAL DEFECT DUE TO MATERIALS OR WORKMANSHIP. ALL DELIVERY AND SHIPMENT CHARGES TO AND FROM GSI'S FACTORY WILL BE PURCHASER'S RESPONSIBILITY. EXPENSES INCURRED BY OR ON BEHALF OF THE PURCHASER WITHOUT PRIOR WRITTEN AUTHORIZATION FROM AN AUTHORIZED EMPLOYEE OF GSI SHALL BE THE SOLE RESPONSIBILITY OF THE PURCHASER.

EXCEPT FOR THE LIMITED WARRANTY EXPRESSED ABOVE, GSI MAKES NO FURTHER WARRANTY OF ANY KIND, EXPRESS OR IMPLIED, INCLUDING, WITHOUT LIMITATION, WARRANTIES OF MERCHANTABILITY OR FITNESS FOR A PARTICULAR PURPOSE OR USE IN CONNECTION WITH (i) PRODUCT MANUFACTURED OR SOLD BY GSI OR (ii) ANY ADVICE, INSTRUCTION, RECOMMENDATION OR SUGGESTION PROVIDED BY AN AGENT, REPRESENTATIVE OR EMPLOYEE OF GSI REGARDING OR RELATED TO THE CONFIGURATION, INSTALLATION, LAYOUT, SUITABILITY FOR A PARTICULAR PURPOSE, OR DESIGN OF SUCH PRODUCTS.

GSI SHALL NOT BE LIABLE FOR ANY DIRECT, INDIRECT, INCIDENTAL OR CONSEQUENTIAL DAMAGES, INCLUDING, WITHOUT LIMITATION, LOSS OF ANTICIPATED PROFITS OR BENEFITS. PURCHASER'S SOLE AND EXCLUSIVE REMEDY IS AS SET FORTH IN THE LIMITED WARRANTY EXPRESSED ABOVE, WHICH SHALL NOT EXCEED THE AMOUNT PAID FOR THE PRODUCT PURCHASED. THIS WARRANTY IS NOT TRANSFERABLE AND APPLIES ONLY TO THE ORIGINAL PURCHASER. GSI SHALL HAVE NO OBLIGATION OR RESPONSIBILITY FOR ANY REPRESENTATIONS OR WARRANTIES MADE BY OR ON BEHALF OF ANY DEALER, AGENT OR DISTRIBUTOR OF GSI.

GSI ASSUMES NO RESPONSIBILITY FOR CLAIMS RESULTING FROM ERECTION DEFECTS OR UNAUTHORIZED MODIFICATIONS TO PRODUCTS WHICH IT MANUFACTURED. MODIFICATIONS TO PRODUCTS NOT SPECIFICALLY DELINEATED IN THE MANUAL ACCOMPANYING THE EQUIPMENT AT INITIAL SALE WILL NULLIFY THE PRODUCT WARRANTY THAT MIGHT HAVE BEEN OTHERWISE AVAILABLE.

THE FOREGOING WARRANTY SHALL NOT EXTEND TO PRODUCTS OR PARTS WHICH HAVE BEEN DAMAGED BY NEGLIGENT USE, MISUSE, ALTERATION OR ACCIDENT. THIS WARRANTY EXTENDS SOLELY TO ONLY PRODUCTS MANUFACTURED BY GSI. THIS WARRANTY IS EXCLUSIVE AND IN LIEU OF ALL OTHER WARRANTIES EXPRESS OR IMPLIED. GSI RESERVES THE RIGHT TO MAKE DESIGN OR SPECIFICATION CHANGES AT ANY TIME.

PRIOR TO INSTALLATION, PURCHASER HAS THE RESPONSIBILITY TO COMPLY WITH ALL FEDERAL, STATE AND LOCAL CODES WHICH MAY APPLY TO THE LOCATION AND INSTALLATION OF PRODUCTS MANUFACTURED OR SOLD BY GSI.

This Equipment shall be installed in accordance with the current installation codes and applicable regulations which should be carefully followed in all cases. Authorities having jurisdiction should be consulted before installation occurs.

For more information, contact the DMC Distribution Center closest to you.

Illiana Distribution Center

1004 E. Illinois St.
Assumption, Illinois 62510
Phone: 217-226-5100
FAX: 217-226-5070

Clear Lake Distribution Center

5205 4th Ave South
Clear Lake, Iowa 50428
Phone: 641-357-3386
FAX: 641-357-1928

internet: <http://www.dmc-davidmanufacturing.com>