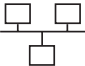


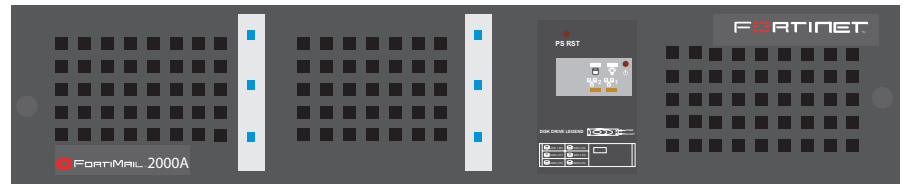


FortiMail Unit LED Indicators

Light Icon	Description
	The light flashes as log packets are sent and received to and from the FortiMail unit.
	Power indicator.
	The light flashes when accessing the boot device.



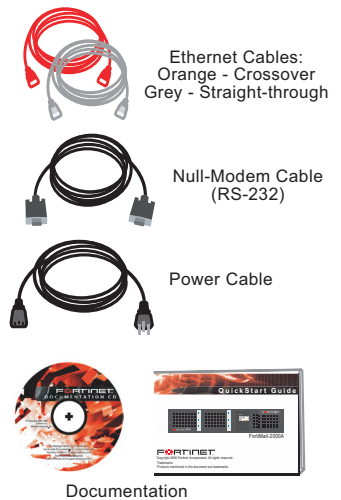
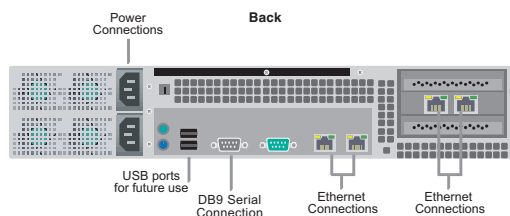
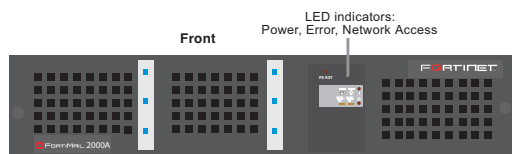
FortiMail-2000A



© Copyright 2008 Fortinet Incorporated. All rights reserved.
 Products mentioned in this document are trademarks or registered trademarks of their respective holders.
 Regulatory Compliance
 FCC Class A Part 15 CSA/CUS
 9 September 2008

06-30004-0355-20080909

1 Checking the Package Contents

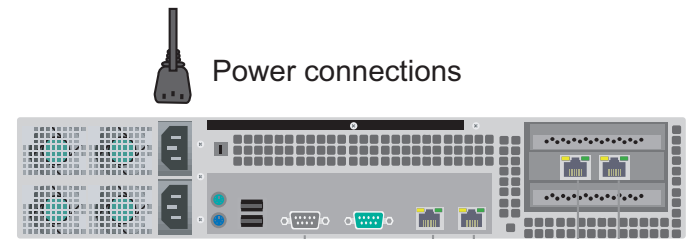


Connector	Type	Speed	Protocol	Description
Ports 1 to 4	RJ-45	10/100/1000 Base-T	Ethernet	Connection to the network
CONSOLE	DB-9	9600 bps	RS-232	Connection to the management computer. Provides access to the command line interface (CLI).

2 Connecting

Connect the FortiMail unit to a power outlet and to the network hub or switch.

- Place the FortiMail unit on a stable surface. It requires 1.5 inches (3.75 cm) clearance on each side to allow for cooling.
- For rack mounting, the FortiMail unit requires 2U of vertical space.
- Plug the power cable into the back of the FortiMail unit, then plug the power cable into the power outlet.



Null modem cable connects to serial port on management computer.

Straight-through Ethernet cable connects to hub or switch on the network.

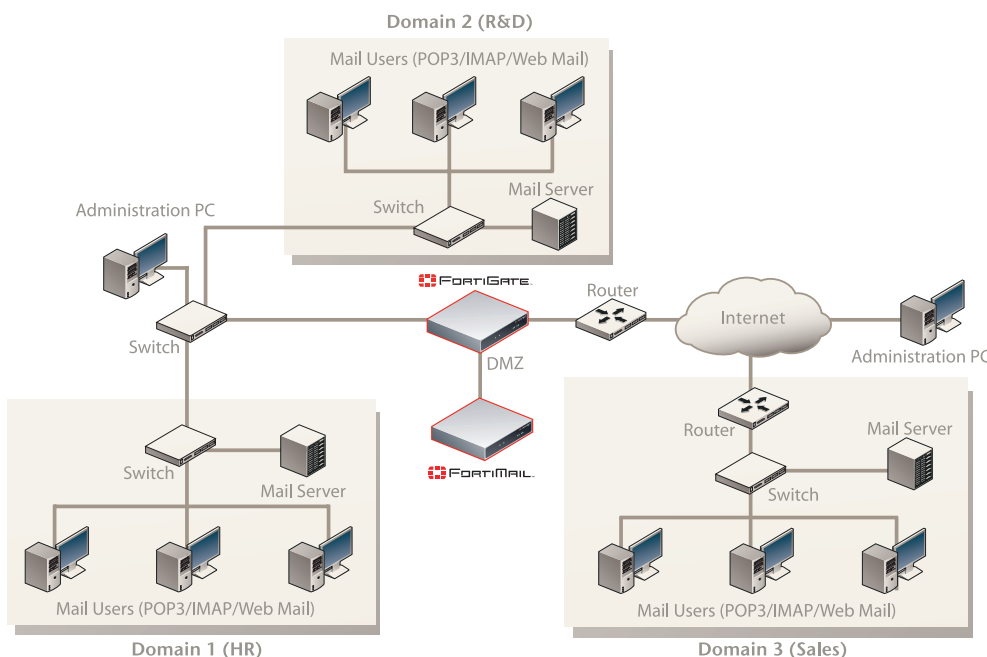
3 Planning the Configuration

Gateway mode

In Gateway mode, the FortiMail unit protects your email server by scanning the SMTP traffic for viruses and spam messages as it passes through the FortiMail unit.

You can configure your firewall or DNS server to ensure that incoming SMTP traffic goes through the FortiMail unit before reaching the email server. Optionally, you can configure the email server to use the FortiMail unit as the relay server for outgoing SMTP traffic.

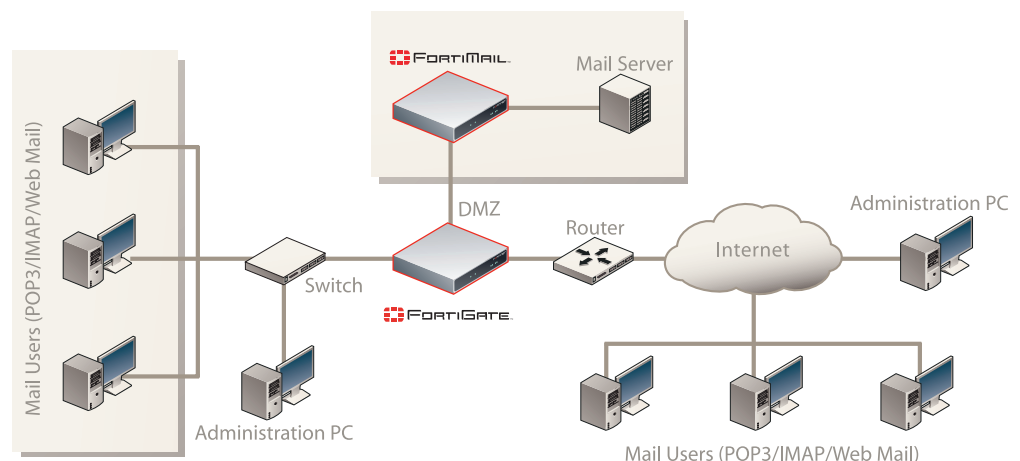
The FortiMail unit integrates into your existing network with only minor changes to your network configuration.



Transparent mode

In Transparent mode, the FortiMail unit protects your email server by scanning the SMTP traffic for viruses and spam messages as it passes through the FortiMail unit.

The FortiMail unit provides seamless integration into existing networks. You can place the FortiMail unit in front of the existing email server without any configuration changes to the existing network topology, for filtering email messages. This means that all of the FortiMail interfaces are on the same IP subnet and appears to other devices as a bridge. Alternatively, you can configure the FortiMail unit as a combination of a bridge and a router by assigning IP addresses to some of its interfaces. In this situation, the interfaces can be on different subnets.



Server mode

In Server mode, the FortiMail unit provides basic email server functionality, supporting WebMail, SMTP, POP3 and IMAP email protocols. In addition, the FortiMail Server provides antivirus, antispam, email archiving, logging and reporting services.

4 Choosing a Configuration Tool

Web-based manager

The FortiMail web-based manager is an easy to use management tool. Use it to configure the administrator password, the interface and default gateway addresses, and the DNS server addresses.

Requirements:

- An Ethernet connection between the FortiMail unit and management computer.
- Internet Explorer 5.0 or higher on the management computer.

Command Line Interface (CLI)

The CLI is a text-based management tool. Use it to configure the administrator password, the interface addresses, the default gateway address, and the DNS server addresses. To configure advanced settings, see the *FortiMail Administration Guide*.

Requirements:

- The DB-9 serial connection between the FortiMail unit and management computer.
- A terminal emulation application (HyperTerminal for Windows) on the management computer.

5 Collecting Information

Gateway/Server mode

Port 1	IP:	_____
	Netmask:	_____
Port 2	IP:	_____
	Netmask:	_____
Port 3	IP:	_____
	Netmask:	_____
Port 4	IP:	_____
	Netmask:	_____

Transparent mode

Management IP	IP:	_____
	Netmask:	_____

General settings

Administrator password:		
Network Settings:	Default Gateway:	_____
	Primary DNS Server:	_____
	Secondary DNS Server:	_____

A default gateway is required for the FortiMail unit to route connections to the Internet.

Factory default settings

Gateway/Server mode		Administrative account settings	
Port 1	192.168.1.99	User name	admin
Port 2	192.168.2.99	Password	(none)
Port 3	255.255.255.255	Transparent mode	
Port 4	255.255.255.255	Management IP	192.168.1.99

6 Configuring the FortiMail Unit

Web-based Manager

1. Connect the FortiMail Port 1 interface to a management computer Ethernet interface. Use a cross-over Ethernet cable to connect the devices directly. Use straight-through Ethernet cables to connect the devices through a hub or switch.
2. Configure the management computer to be on the same subnet as the internal interface of the FortiMail unit. To do this, change the IP address of the management computer to 192.168.1.2 and the netmask to 255.255.255.0.
3. To access the FortiMail web-based manager, start Internet Explorer and browse to <https://192.168.1.99/admin> (remember to include the "s" in https://).
4. Type admin in the Name field and select Login.

The web-based manager has two configuration modes: Basic and Advanced. You can switch between the basic mode and advanced mode of the web-based manager at any time with no configuration loss. To switch between the two modes, go to either Basic >> or Advanced >>. The following configurations are described for Basic mode (the default configuration mode).

Server mode

To switch to Server mode

1. Go to **Management > Status**.
2. Select Change for the Operation Mode.
3. Select Server. The FortiMail unit will reset to factory default settings.

To change the administrator password

1. Go to **Settings > Config > Admin**.
2. Select Change Password for the admin administrator and enter a new password.

To configure interfaces

1. Go to **Settings > Network > Interface**.
2. Select the Modify icon for each interface to configure.
3. Set the addressing mode for the interface. (See the online help for information.)

To configure the Primary and Secondary DNS server IP addresses

1. Go to **Settings > Network > DNS**, enter the Primary and Secondary DNS IP addresses.

To configure a Default Gateway

1. Go to **Settings > Network > Routing** and select Edit icon for the static route.
2. Set Gateway to the Default Gateway IP address you recorded above and select OK.

Gateway mode

To switch to Gateway mode

1. Go to **Management > Status**.
2. Select Change for the Operation Mode.
3. Select Gateway. The FortiMail unit will reset to factory default settings.

To change the administrator password

1. Go to **Settings > Config > Admin**.
2. Select Change Password for the admin administrator and enter a new password.

To configure interfaces

1. Go to **Settings > Network > Interface**.
2. Select the Modify icon for each interface to configure.
3. Set the addressing mode for the interface. (See the online help for information.)

To configure the DNS server and default gateway IP addresses

1. Go to **Settings > Network > Network**, enter the Primary and Secondary DNS, and Default Gateway IP addresses.

Transparent mode

To switch to Transparent mode

1. Go to **Management > Status**.
2. Select Change for the Operation Mode.
3. Select Transparent. The FortiMail unit will reset to factory default settings.

To change the administrator password

1. Go to **Settings > Config > Admin**.
2. Select Change Password for the admin administrator and enter a new password.

To change the management interface

1. Go to **Settings > Network > Management IP**.
2. Enter the Management IP address and netmask.

To configure the Primary and Secondary DNS server IP addresses

Go to **Settings > Network > DNS**, enter the Primary and Secondary DNS IP addresses.

Command Line Interface

1. Use the DB-9 serial cable to connect the FortiMail Console port to the management computer serial port.
2. Start a terminal emulation program (HyperTerminal) on the management computer. Use these settings:
Baud Rate (bps) 9600, Data bits 8, Parity None, Stop bits 1, and Flow Control None.
3. At the Login: prompt, type admin and press Enter twice (no password required).

Configuring the FortiMail unit

The CLI commands to configure the FortiMail unit are the same for all three modes.

1. Configure the interface IP addresses.
`set system interface <port_number> mode static ip <ip_address><netmask>`
3. Configure the primary and secondary DNS server IP addresses.
`set system dns primary <dns-server_ip>`
`set system dns secondary <dns-server_ip>`
4. Configure the default gateway.
`set system route number <route_number> gw1 <gateway_ip>`

Changing Operating Modes

1. To change modes
`set system opmode {gateway | server | transparent}`
2. Set the management IP for Transparent mode.
`set system managementip <ip_address> netmask <netmask>`

7 Completing the Configuration

Congratulations!

You have finished configuring the basic settings. To explore the full range of configuration options, see the online help or the Tools and Documentation CD.

Visit these links for more information and documentation for your Fortinet product.

- Technical Documentation - <http://docs.forticare.com>
- Fortinet Knowledge Center - <http://kc.forticare.com>
- Fortinet Technical Support - <http://support.fortinet.com>