

Contents

Profile	1
Overview	1
Product Package Contents	1
System Requirements	1
To know Digital Camera	1
Install Battery	2
Software Installation	3
Taking Photos	4
Camera Functions Control	5
Download Photos	7
PC Camera Functions	9
Browse Live	9
Video Conference	10
Appendix1: Specifications	11
Appendix2: Answers of frequent asked	11
“PhotoImpression and Funhouse” User’s Manual	14

Profile

Overview

Thank you for purchasing the digital camera. It not only can take photos but also has the built-in PC camera functions. This camera is equipped with 8MB SDRAM: if you want the photos in the camera to be downloaded to your computer, you are only required to connect the USB cable to your computer and your camera; It is also possible to use the built-in PC camera to hold a video conference via the internet, enabling you to have a face to face online conversation with others.

Product Package Contents

- | | |
|-----------------|----------------------|
| *Digital Camera | *User's Manual |
| *Software CD | *USB Connector Cable |

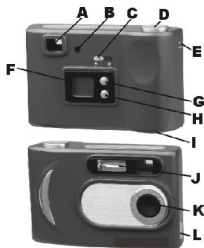
System Requirement

- Microsoft win98 Edition II/2000/ME/XP operation system
- 125MB or above free hard disk space, 32MB or more RAM
- Color Monitor (Suggest at least 800*600 24 bit or above)
- Available USB port and CD-ROM

To Know Digital Camera

- A. Viewfinder
- B. Indicator light
- C. Flashing Selection Button
- D. Start/Shutter Button
- E. Hanging Strap Hole
- F. LCD

- G. Delete Button
- H. Function Button
- I. Battery Box
- J. Flash Lamp
- K. Lens
- L. USB Port



Install Battery

1. Open the battery box.
2. Load the batteries correctly: when you load the batteries, please place two AA battery according to the pole directions for batteries on the battery box.
3. Close the battery box cover.



Note:

1. When you use the USB cable to connect the camera with a computer, is unnecessary to use the batteries because the camera use the power provided by the computer through the USB interface.
2. Before you use the PC camera functions, please download all photos in the camera to your computer, which will avoid pictures missing
3. Please pay attention to that the reasonable distance between you eyes and viewfinder is about 30cm.

Warning

1. Don't open the battery box at will, and the power cut will cause the photos in the camera missing.
2. If you don't use the camera for a long time, please take out of the batteries for fear of the discharging or corrosion of the batteries.
3. Please don't put the battery into fire for fear of explosion to cause.

Automatically enter the energy saving status

In order to save the energies of batteries, if the camera is not used in 60s, the camera will auto enter into the energy saving status.

Software Installation

Please do not connect camera to PC while installing the software drivers.

Please DRIVER DISK CD into CD-ROM tray, the dialog box will appear as follows:

1. Install Photolmpression
2. Install Funhouse
3. Install Driver
4. Browse Contents of CD-ROM
5. Exit



You are required to install each application and camera driver. Install Photolmpression Software, Funhouse Software & Install Driver. After installation you may browse the CD or Exit.

Note: For detailed instruction on PhotoImpression and Funhouse software, please refer to separate instructions enclosed.

If the auto installation fails, you must install them manually.

1. Place the DRIVER DISK CD into the CD-ROM driver
2. Enter E:\autorun.exe (If E is your CD-ROM letter)
3. Follow the directions of the installation wizard.

Taking photos

Please be sure batteries installed are fresh before using the camera to take photos.

1. Load the batteries. **Hold down the Start/Shutter Button for 5 seconds** and the camera will give out a “beep” sound indicating the camera is ON. “Hi 000” will display in the LCD.
2. Use the optical viewfinder to view and frame your subject prior to taking photograph.
3. Hold the camera steadily, and press the shutter button to take photos.
4. When you hear the buzzer beeps once, which indicates you have already taken a photo, and you can go on taking photos.
5. When the camera is fully loaded with photos, if you press **Start/Shutter** button again, the buzzer will give out continuous beeps sound for alarm.

Prompt:

1. When taking photos, the lower sound indicates the failure of shooting.
2. Please hold camera steadily when you are taking photos.
3. The storage of light will effort the quality of picture.


Camera Functions Control

Turn on


Press and hold down the Start/Shutter Button for 5 seconds to turn on.

When connecting to a computer using a USB cable, the camera will power on automatically.

Using the Flash

Push the flash lamp button to the side close to “”, the flash lamp will start to be recharged and the indicator will be light up. The flash lamp will be light up when it fully recharged. The flash lamp will work if you press shutter.


Continuous shoot

1. Press Function Button until the “” is shown on the LCD.
2. Press the Shutter Button within 5 seconds to continuous shoot.


Prompt:

1. During the continuous shooting period, the incorrect exposure will possibly appear due to the shortage of rays.
2. During the continuous shooting period, the operation can be executed under QVGA mode.
3. The photos taken in continuous shoot mode can be downloaded singly.

Delete single photos

1. Press the **Delete Button** select “” icon shown on the LCD display.
2. Press the Shutter Button once within 5 seconds to delete the last photo taken.

Delete all photos

1. Press the **Delete Button** select “” icon shown on the LCD display.

2. Press the Shutter Button once within 5 seconds to delete all the photos stored in the camera.

Note: If you don't press shutter button within 5s, the operation of deleting the photos in camera will not be executed, and the camera will return to the normal working state.

Photo Resolution Selection

Note:

The resolution status will always show on the LCD display in small character.

1. Press "Function button" to select "Hi" or "Lo" character show on LCD.
2. "Hi" means SXGA mode 1280*960 pixels; "Lo" means VGA mode 640*480 pixels.
3. When you press the "Function Button" once to switch between the "Hi" and "Lo" mode. The Hi mode will allow you to take about 26 photos and the Lo mode will allow you to take about 104 photos.

Photo Storage

The photo can be taken will vary referring to the resolution and compression ratio. The LCD display will always show the status of resolution and the photo number has taken unless the Select Button is pressed. The highest storage of photos will be: **26 photos --- "Hi" resolution 104 photos --- "Lo" resolution**

Press the Shutter Button to take one photo and the photos taken will be displayed as a digit on the LCD display. Each consecutive photo taken will increase the photo number by one digit. As the following:



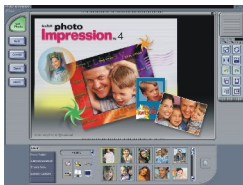
Note: Each time you change the resolution; the number of photo you have taken will not change.


Nota:

Download Photos

When your photo memory is at capacity, you may transmit them into your computer for viewing storage. Meanwhile, you could use “PhotoImpression 4” to edit/print photos.

1. Plug the other end of the USB cable into a USB port on your computer. When you heard the buzzer beeps once means USB cable connected well.
2. Double-click the “PhotoImpression4” icon that is on your desktop. This will launch the “PhotoImpression_{TM} 4” program.



1. At the bottom of the screen you will see a menu bar that has 5 selections. Please select the labeled “camera/scanner”
2. This will automatically set your source to “**VGA Dual Camera**” and your album to “PI Sample”.
3. Select the labeled “” (labeled as “acquire” when you hold the mouse over it).



4. This will start the image acquisition, and will display the picture as a thumbnail in the photo holder.

5. Selected the photo you want and click “OK” to magnify it.



PC Camera Functions

Browse Live

1. Please select (PhotoImpression 4) in the program library of **VGA Dual Camera**.



2. Click [video camera] , and the dialog box [capture the images from video camera] will automatically pop-up.
- 3.



Functions Introduction

(1). Sources-

You can set the Brightness, Contrast---- device origin, device set and camera control; and please select (Default).

(2). Format-

You can adjust the resolution and the color mode of images; the color mode is suggested to select [RGB-24].

(3). Live-

You can browse real-time videos or images.

(4). Capture-

When you play live videos, click and select this function to acquire the single picture and store it in the album.

(5). Done

Finish the PC Camera Functions

Video Conference

The camera can be used as a PC camera to conduct image transmission or hold online Video conferences, you are only required to:

1. Use the USB cable to connect the camera and PC
2. Run the video conference software Microsoft Net Meeting on your computer.
3. Input others' IP address in the address bar and dial
4. Select [Tool]\[Video]\[Accept] and [Transfer] options. After others accepted your calling, you can hold Video conference.



Appendix1: Specifications

Product Type: Digital Camera

Electronic Coupling Element: CMOS Sensor 300K Pixels

Image Resolution: 1280*960 Pixels (SXGA)

640*480 Pixels (VGA)

Memory Device: Built-in

Memory Capacity: 26 pieces (VGA) 104 pieces (QVGA)

Viewfinder: Built-in

Shutter Speed: 1/6-1/15000 seconds

Shoot Mode: Single/ Continuous /PC Camera

Image Process: Automatic Exposure / Automatic White Balance

Working Voltage: AA1.5V * 2/USB 5V

Transmission Interface: USB 1.1

Working Temperature: 0-40℃

Operating System: Windows98 Edition II/2000/Me/XP

Appendix2: Answers of frequent asked questions

1. Q: When I finished the standard software installing processes, but there is an icon showing “no photos in cameras” after download.

A: First make sure that you're completed photo token's step. Then checking the total number showing on the camera's LCD panel. Please also check the USB cable is loose or not. If it does not work please do the following steps:

If your O/S (operation system) is Win XP or Win 2000

□1□Open [Device Manager] (Select [My computer] on the Desktop, Press right key/Properties/Hardware/Device Manager...)

- 2□ Select [Action] → [Scan for hardware changes]
If your O/S (operation system) is Win 98 Se or Win Me
- 3□ Press right key/[Refresh]
Apretar right key/[Refresh]

2. Q: The camera can't work after connection, there's a yellow mark "!" Showing at Device Manager/Imaging devices/**VGA Dual Camera**.

A: Due to the collision of the computer's peripheral please follow below steps:

- (1) Select **VGA Dual Camera**. in [Device Manager]
- (2) Press right key/[Uninstall] (If OS is Win 98 Se or Win Me, Press right key/[Remove])
- (3) Un-plug USB cable
- (4) Restart Computer
- (5) Re-plug USB cable

3. Q: After finish software installation and connected the camera to the computer, in device manager there's "unknown USB device".

A: Please check your camera was connecting well with your computer, if it is connecting well please do the following steps:

- (1) Unload "**VGA Dual Camera**." Driver
- (2) Re-install My DSC driver.

4. Q: Can I connect the camera to the compute when I install the driver?
Puedo conectar la camara al computador cuando yo instalo el arranque??
A: No, please do not connect your camera to computer while you are install driver.
5. Q: Why my camera has no response when I press Mode key or shutter.
A: Please take battery out and reload it.
6. Q: There is color spots/ stripes layers and segments when I download my photos.
A: This is causing by camera's internal program loop, the factors might be causing by improper or bad batteries. Please turn off all the power (including USB cable and batteries), use the new batteries than start the photo download step after 10 second.
7. Q: Why I can't download my photos or has problem with photo download?
A: Please open dr. and re-download photos,
dr. will save this problem. Please send this file
back to your suppliers or customer service team.

"PhotoImpression and Funhouse" User's Manual ☐

Please follow the four steps below to browse
"PhotoImpression and Funhouse" User's Manual
attached in the CD.

1. Double-click "My Computer" icon  My Computer .

2. Open CD-ROM.

3. Open loose-leaf folder "user's manual" in the main
screen of CD-ROM.

4. You can browse "PhotoImpression" or "Funhouse"
User's Manual as you wants.

***Note: "PhotoImpression" and "Funhouse" User's
Manuals are read by Acrobat. If you cannot read
them, please install Acrobat in your computer
firstly.***

