



Seagate

BLACKARMOR[®]

PS 110

PORTABLE DRIVE
USB 3.0 PERFORMANCE KIT

QUICK START GUIDE

5 YEAR
LIMITED
WARRANTY



WWW.SEAGATE.COM

Visit us at our Support pages for assistance with

- **Installation:** Additional instructions and troubleshooting assistance
- **Knowledge Base:** FAQ's, How to use this product
- **Download Center:** Installation software, utilities, and diagnostics
- **Warranty Information**
- And all of your other storage needs

A soft copy of your comprehensive **User Guide** is included with your product.

To contact Support, visit us at our **Contact Us** page.

FCC DECLARATION OF CONFORMANCE

This device complies with Part 15 of the FCC Rules. Operation is subject to the following two conditions: (1) this device may not cause harmful interference, and (2) this device must accept any interference received, including interference that may cause undesired operation.

CLASS B

This equipment has been tested and found to comply with the limits for a Class B digital device, pursuant to Part 15 of the FCC Rules. These limits are designed to provide reasonable protection against harmful interference in residential installation.

This equipment generates, uses, and can radiate radio frequency energy and, if not installed and used in accordance with the instructions, may cause harmful interference to radio communications.

However, there is no guarantee that interference will not occur in a particular installation. If this equipment does cause harmful interference to radio or television reception, which can be determined by turning the equipment off and on, the user is encouraged to try to correct the interference by one or more of the following measures:

- Reorient or relocate the receiving antenna.
- Increase the separation between the equipment and receiver.
- Connect the equipment into an outlet on a circuit different from that to which the receiver is connected.
- Consult the dealer or an experienced radio/TV technician for help.

CAUTION: Any changes or modifications made to this equipment may void the user's authority to operate this equipment.

Seagate Technology LLC
920 Disc Drive
Scotts Valley, CA 95066
U.S.A.
www.seagate.com

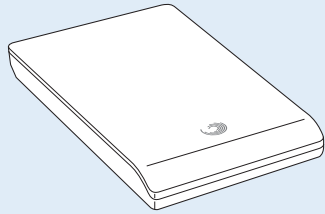
©2009 Seagate Technology LLC. All rights reserved. Seagate, Seagate Technology, the Wave logo, and BlackArmor are trademarks or registered trademarks of Seagate Technology LLC or one of its affiliated companies in the United States and/or other countries. All other trademarks or registered trademarks are the property of their respective owners. The export or re-export of hardware or software containing encryption may be regulated by the U.S. Department of Commerce, Bureau of Industry and Security (for more information, visit www.bis.doc.gov). Seagate reserves the right to change, without notice, product offerings or specifications.

PN: 100599563 11/09

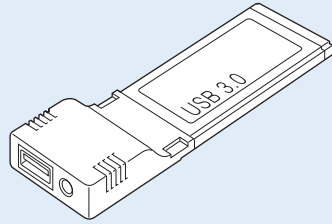


KIT CONTENTS

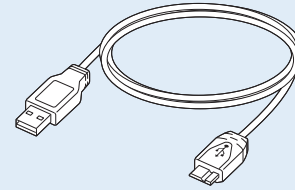
Seagate® BlackArmor®
PS 110 Drive



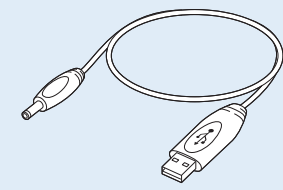
USB 3.0
PC Card Adapter



USB 3.0
Cable



USB
Power Cable



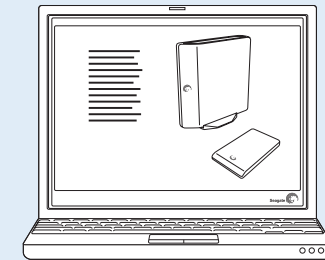
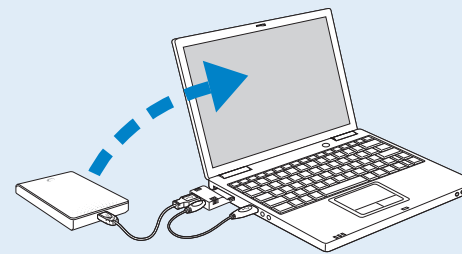
INSTALL DRIVER

1. Connect the USB 3.0 cable to the BlackArmor® PS 110 drive and to a USB port on your computer.
Complete steps 2 and 3 if the driver does not automatically install.
2. Navigate to the BlackArmor PS 110 drive location (**Computer > BlackArmor Drive > USB 3.0 PC Card Adapter**)
3. Double-click **PC Card Adapter Driver.exe** to install the USB 3.0 driver.
4. Once the USB 3.0 driver is installed, safely remove (disconnect) the PS 110 drive from your computer. (Keep the cable connected to the drive.)

INSTALL BACKUP SOFTWARE

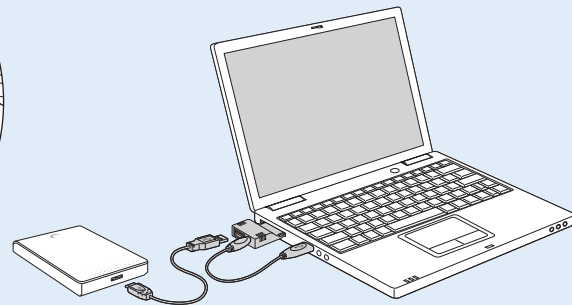
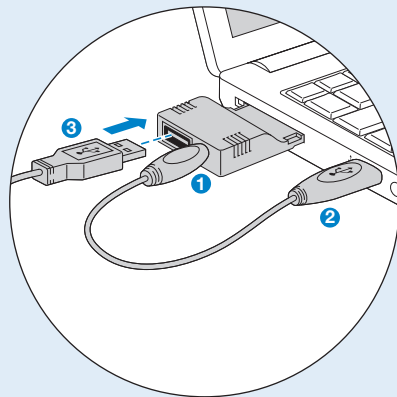
After drive is connected, software installer automatically launches.

Follow the on-screen instructions.



CONNECT KIT

- 1 Connect the USB power cable's DC plug to the USB 3.0 PC Card Adapter and to a USB port on your computer. The LED on the USB 3.0 PC Card Adapter turns red to indicate that it is not ready for the PS 110 drive to be connected.
- 2 Insert the USB 3.0 PC Card Adapter into your computer's ExpressCard™ slot. The LED turns green to indicate that the PC Adapter Card is now ready and has sufficient power.
- 3 Connect the USB 3.0 cable (attached to the PS 110 drive) to the USB 3.0 PC Adapter Card port.



If the installation does not begin automatically, double-click **Setup.exe** on your BlackArmor PS 110 drive or visit <http://support.seagate.com/autorun> for additional instructions.

NOTE: The optional BlackArmor Backup software can be installed at any time.

RECOMMENDED: Create Recovery CD

Be sure to create a system recovery CD using BlackArmor Backup Software. Your system and data can be restored using this CD. See the *BlackArmor® Backup User Guide* for instructions.

When disconnecting the drive, ensure that you use the safely remove hardware feature. Right-click the safely remove icon in the notification area and then follow the instructions.